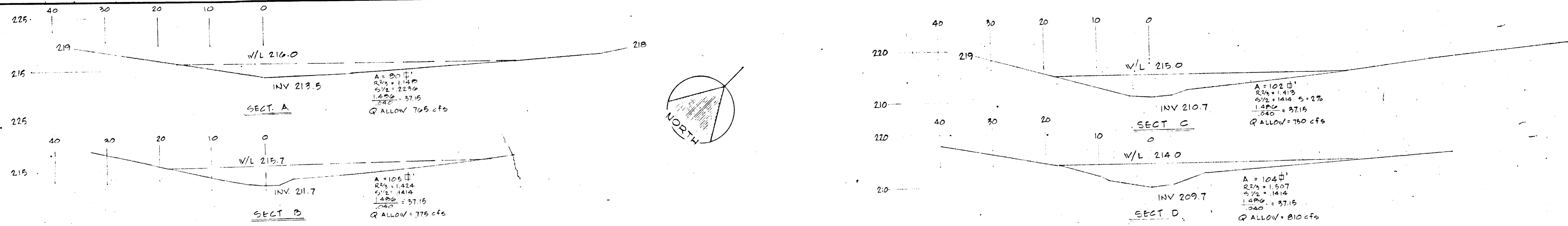
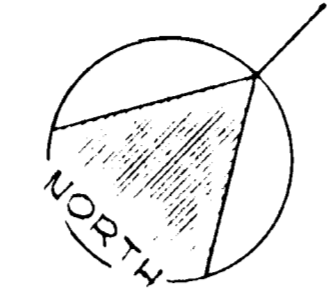


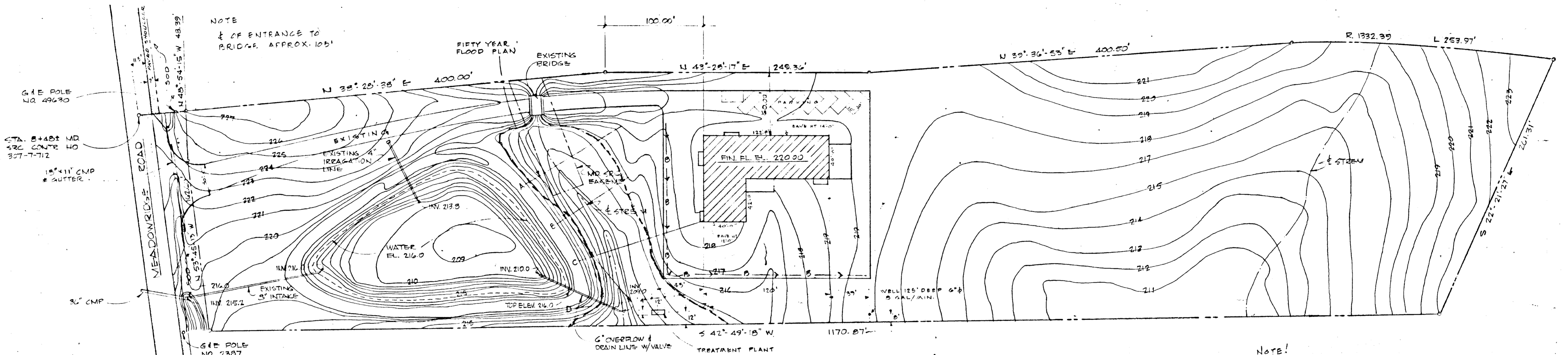
PROP BLDG 220FF



INTERSTATE ROUTE 25 STATE ROADS COMMISSION



NOTE: 1/2 OF ENTRANCE TO BRIDGE APPROX. 105'

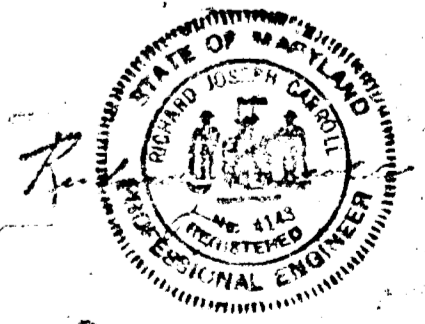
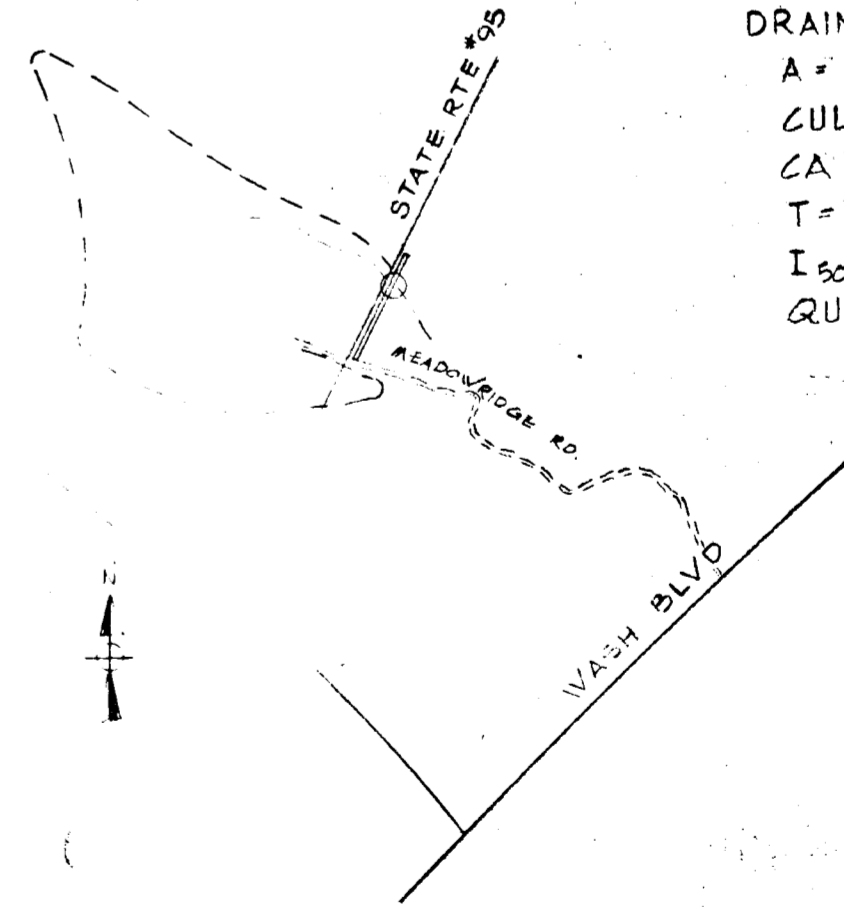


PARKING DATA:
 NO. OF EMPLOYEES 4
 NO. OF SPACES SHOWN (10'x20') 9
 ROAD # PARKING AREA TAR # CHIP
 NO 4 STONE FIRST NO 7 STONE LAST

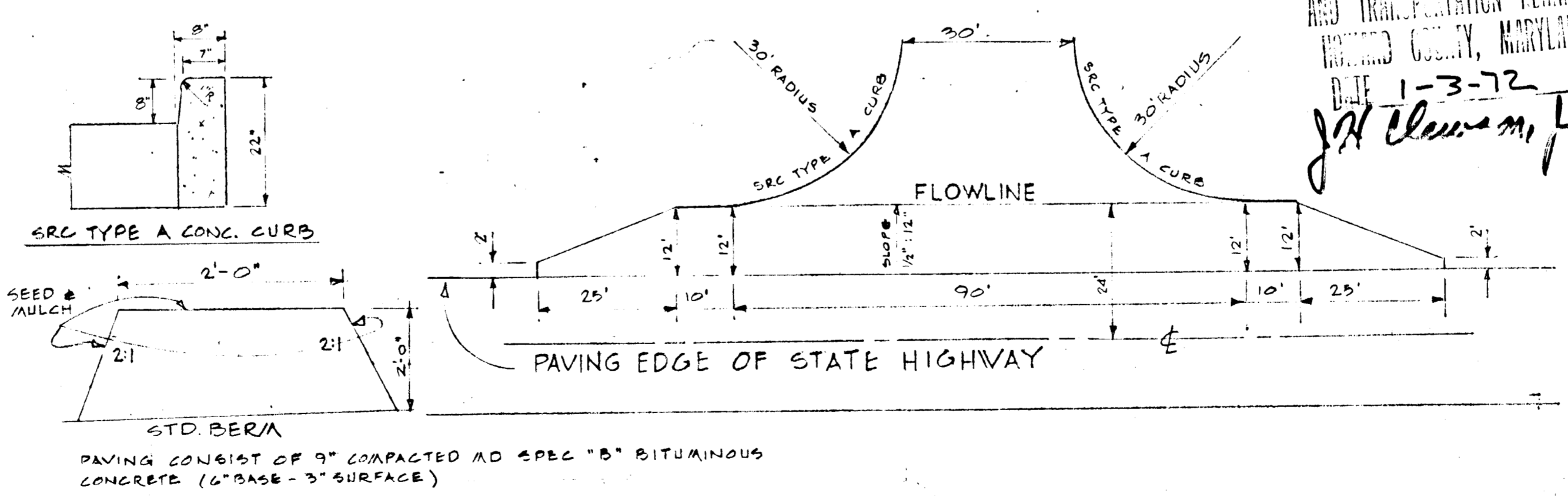
NOTE: SEWER AND WATER PRIVATE SYSTEM

DRAINAGE COMPS
 A = 200 AC
 CULMIMATE 0.50 CACT 0.30
 CA = 100 CA 60
 T = 22 MIN
 I 50 YR = 6.3 I 50 YR = 6.3
 QULTIMATE 630 cfs QACT = 380 cfs

APPROVED
 DIVISION OF LAND DEVELOPMENT
 AND TRANSPORTATION PLANNING
 HOWARD COUNTY, MARYLAND
 DATE 1-3-72
 J.H. Cleary, Jr.



NOTE
 NO BUSINESS SIGNS OR LOCATIONS OF ANY AT THIS TIME. THIS SITE HAS BEEN PREGRADED SINCE 1970
 SEDIMENT CONTROL MEASURES WILL BE CONSTRUCTED PRIOR TO ANY CONSTRUCTION
 PRIOR TO CONSTRUCTION #9.6.0 MUST BE GIVEN 24 HRS NOTICE 465-3100
 ALL AREAS NOT PAVED THAT ARE DISTURBED WILL BE STABILIZED WITH THE FOLLOWING
 SOIL PREPARATION TO INCLUDE GROUND BURNED LIMESTONE AT THE RATE OF 1 1/2 TON/AC (60 LBS/1000 SQ FT), COMMERCIAL FERTILIZER 10-10-10 AT THE RATE OF 34 TON/AC (36 LBS/1000 SQ FT) AND SUPER PHOSPHATE AT THE RATE OF 600 LBS/AC (15 LBS/1000 SQ FT)
 ANNUAL RYE GRASS 20%
 KENTUCKY 31 PEGGLE 80%
 TO BE SOWN AT THE RATE OF 200 LBS/AC WITH A MECHANICAL SPREADER, RAKE A MINIMUM OF (2) TWO PASSES WITH A YOKE RAKE, COVER AND COMPACT WITH A CULTIPACTOR
 IMMEDIATELY AFTER SEEDING, UNIFORMLY MULCH THESE AREAS WITH UNWEATHERED SMALL GRAIN STRAW (PREFERABLY WHEAT) AT THE RATE OF 1 1/2 TO 2 TONS/AC OR 69 TO 92 LBS/1000 SQ FT.
 TIE MULCH DOWN WITH LIQUID ASPHALT .1 GAL/SQ.YD OR EMULSIFIED ASPHALT .04 GAL/SQ.YD. OR MULCH NETTING

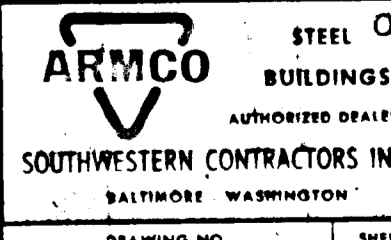


ROADWAY # PARKING LOT
 1" BITUMINOUS CONC SURFACE BOND C-3
 4" BITUMINOUS CONC BASE C-2 OR C-3

THIS SITE WILL BE CONSTRUCTED IN ACCORDANCE WITH THIS PLAN OF EROSION & SEDIMENT CONTROL

HARRY J. DENTON, JR. PRESIDENT

SHOPS & OFFICES		HARRY J. DENTON, JR.		2655 MEADOWRIDGE ROAD		HOWARD COUNTY, MARYLAND	
DATE	ORDER NO.	DRAWN BY	SCALE	SHEETS	NO.	DRAWING NO.	
9-5-69	6-523	WLL	1" = 50'-0"	9	3W69-48	1	



SEP-72-36