

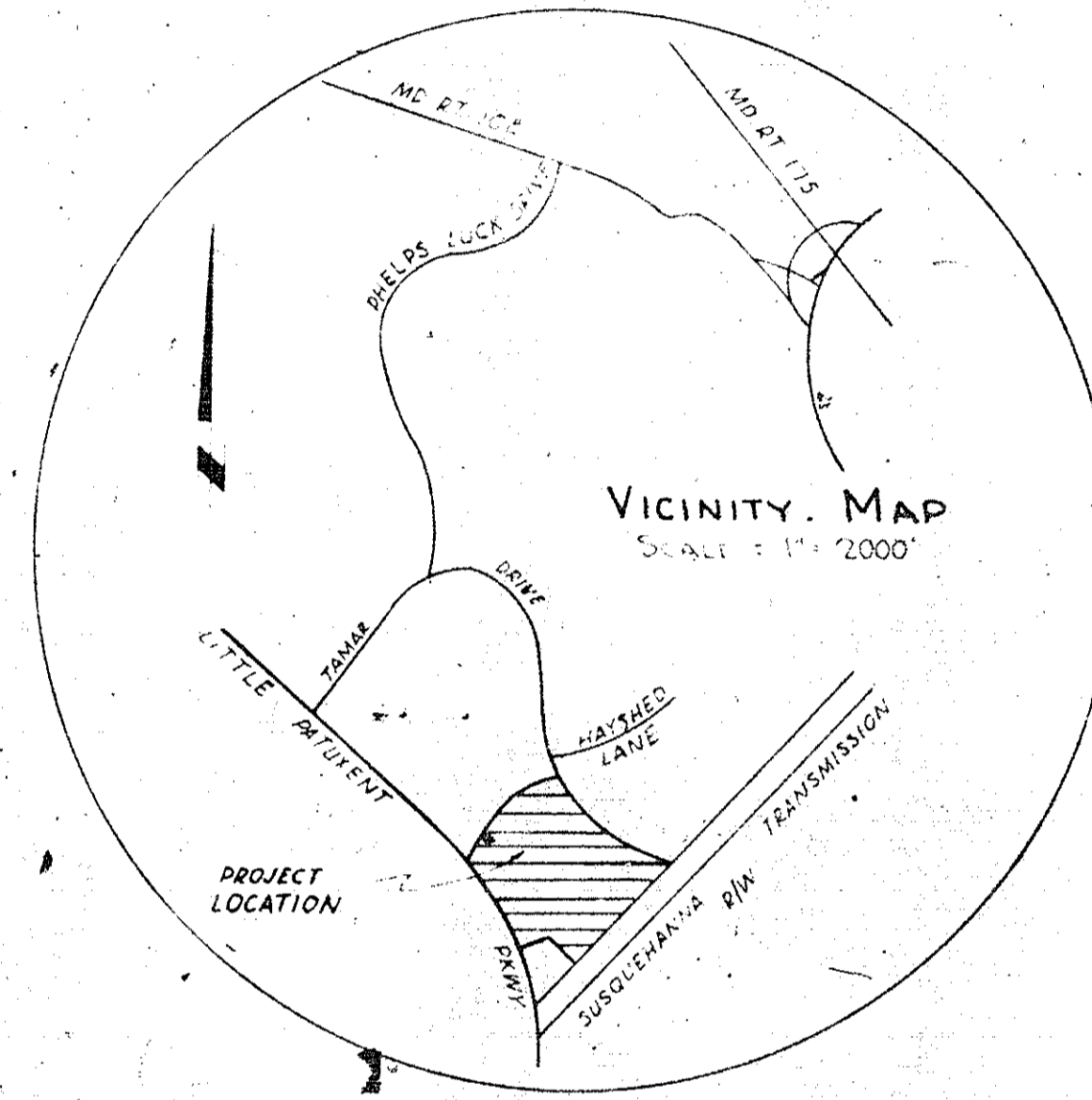
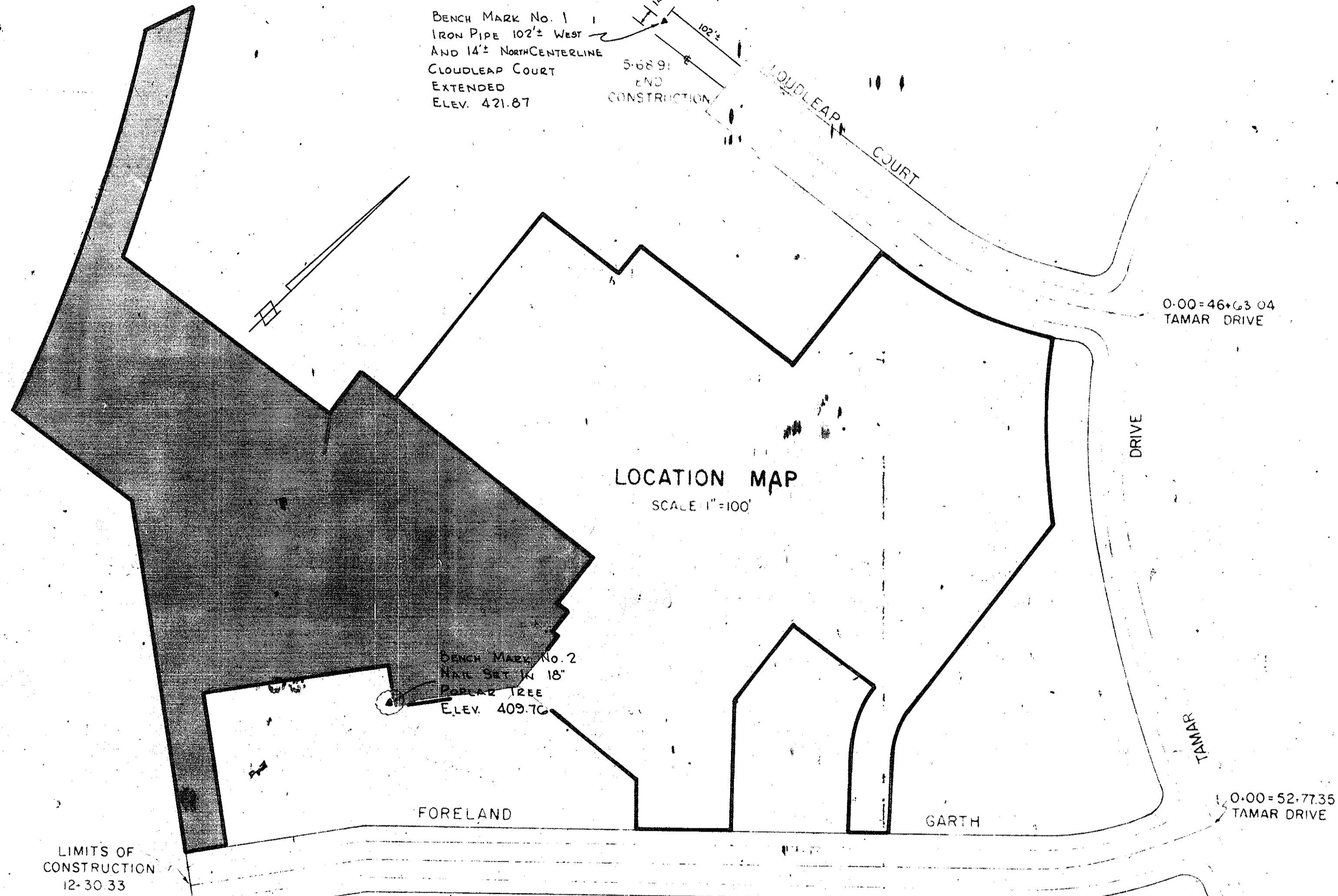
# COLUMBIA

HOWARD COUNTY, MARYLAND  
6th ELECTION DISTRICT

## VILLAGE OF LONGREACH SECT. 1 AREA 5

### GENERAL NOTES

1. NO ONSIDE GRADING SHALL BE DONE UNTIL SEDIMENT BASINS PREVIOUSLY APPROVED BY THE SOIL CONSERVATION SERVICE ARE COMPLETED. SEE FILE F-71-65
2. EXCEPT WHERE OTHERWISE NOTED ALL CONSTRUCTION MATERIALS AND DETAILS SHALL BE IN ACCORDANCE WITH THE LATEST REVISIONS OF THE HOWARD COUNTY ROAD CONSTRUCTION CODE AND STANDARD SPECIFICATIONS.
3. PUBLIC WATER AND SANITARY SEWER FACILITIES ARE AVAILABLE AND ADEQUATE.
4. PROPOSED GRADE CONTOURS REPRESENT FINISHED GRADES. CONTRACTOR SHALL MAKE REQUIRED ALLOWANCES TO SUBGRADE FOR TOPSOIL, PAVING AND OTHER SURFACE FINISHES AS REQUIRED.
5. LOCATION OF EXISTING UTILITIES IS APPROXIMATE ONLY, AND IS OBTAINED FROM RECORD DRAWINGS.
6. PARKING LOT CURBS TO BE HOWARD COUNTY STANDARDS D-40 PG 95
7. PARKING LOT PAVING SHALL CONSIST OF 4" BITUMINOUS CONCRETE BASE (BAND C-2 OR G-3) AND 1" BITUMINOUS CONCRETE SURFACE (BAND C-3)
8. ALL PARKING LOT RADII TO BE 4' EXCEPT WHERE OTHERWISE NOTED.
9. ALL PARKING SPACES 10'x20'
10. CONTOURS EXISTING ..... 460 ..... 1' INTERVAL  
PROPOSED ..... 460 ..... 1' INTERVAL
11. CONTRACTOR SHALL NOTIFY FOLLOWING UTILITY COMPANIES PRIOR TO COMMENCING WORK  
BELL TELEPHONE SYSTEM 393 3649  
LONG DISTANCE CABLE DIV. 393 3553  
BALTO GAS AND ELECTRIC CO. 539 8000 EXT. 691
12. ALL AREAS DISTURBED BY GRADING OR CONTRACTORS OPERATIONS NOT BEING PAVED, SHALL BE TOPSOILED, SEEDING AND MULCHED IN ACCORDANCE WITH THE FOLLOWING.  
A. PLACE 8" LAYER OF TOPSOIL TO FINISHED GRADE  
B. SPREAD PULVERIZED DOLOMITIC LIMESTONE AT RATE OF ONE TON PER ACRE  
C. SPREAD 10-10-10 COMMERCIAL GRADE FERTILIZER @ RATE OF 600 LBS PER ACRE AND IMMEDIATELY DISC INTO TOPSOIL TO THE DEPTH OF 3"  
D. SEED PREPARED AREAS AT RATE OF 70 LBS PER ACRE USING KENTUCKY PESCUE 31  
E. MULCH ALL AREAS IMMEDIATELY AFTER SEEDING WITH UNWEATHERED SMALL GRAIN STEAM OR HAY AT RATE OF 15 TONS/ACRE. SPRAY MULCH WITH EMULSIFIED ASPHALT (25-1 OR 2) AT RATE OF 0.24 GAL/50 YD.
13. GRADE AT ALL INLETS TO PROVIDE POSITIVE FLOW TO INLETS. ALL INLETS TO BE CAPPED PRIOR TO CONSTRUCTION. CAP SHALL BE 1/8" THICK METAL PLATE OR EQUIVALENT AND SHALL BE A SIZE TO EXTENT 6" BEYOND EACH SIDE OF INLET AND 6" INTO THE GROUND.
14. SEE SHEETS 314 FOR ROAD AND STORM DRAINAGE PROFILES AND OTHER STORM DRAINAGE INFORMATION AND OTHER DETAILS.
15. SEE ARCHITECTURAL DRAWINGS FOR BUILDING DIMENSIONS AND TIES TO PROPERTY LINE
16. FOR WATER, SANITARY SEWER AND DRAINAGE CONNECTIONS SEE MECHANICAL PLANS
17. PARKING REQUIREMENTS: 1 SPACE PER 4 SEATS  
PARKING REQUIRED: 200 SEATS - MAIN HALL 50 SPACES  
100 SEATS - OCCUPANCY FOR OTHER USES 25 SPACES  
PARKING PROVIDED: 77 (PHASE I) 57 (PHASE II) TOTAL 134 SPACES
18. FOR SEWER AND WATER PLANS SEE CONTRACTS 432-D-W-5.
19. NUMBER EMPLOYEES - 9
20. LOWER FLOOR - 11,794  
COURT LEVEL FLOOR - 12,438  
MEZZANINE FLOOR - 2,692  
TOTAL - 26,924
21. STORM SEWERS AND CURBS SHOWN AS EXISTING ARE AS SHOWN ON ROAD CONSTRUCTION PLANS FOR CLOUDLEAP COURT AND FORELAND GARTH FILED WITH HOWARD COUNTY, MARYLAND
22. VILLAGE OF LONGREACH SECTION 1 AREA 5 RECORDED PLAT BOOK 21 FOLIOS 81 TO 83.
23. A. SPREAD PULVERIZED DOLOMITIC LIMESTONE AT RATE OF ONE TON PER ACRE  
B. SPREAD 500 LB 5-10-10 FERTILIZER PER ACRE  
C. SEED WITH ITALIAN RYEGRASS AT RATE OF 35 LBS PER ACRE  
D. MULCH AT RATE OF ONE AND ONE HALF TONS PER ACRE
24. COVERAGE 5.2%
25. AREA OF PARCEL - 5.160 AC.
26. INSTALLATION OF ALL TRAFFIC CONTROL DEVICES SHALL BE IN ACCORDANCE WITH THE "MANUAL OF UNIFORM TRAFFIC CONTROL DEVICES" 1971 EDITION.
27. THERE ARE NO SIGNS, WALLS OR FENCES ON THIS SITE PLAN.



### SHEET INDEX

- C-1 COVER SHEET
- C-2 SITE PLAN
- C-3 STORM DRAINAGE AREAS
- C-4 PROFILES AND DETAILS

OWNER & DEVELOPER  
COLUMBIA ASSOCIATION  
COLUMBIA, MARYLAND

WALTER L. PHILLIPS

CERTIFIED CIVIL ENGINEER & LAND SURVEYOR  
901 WEST BROAD STREET, FALLS CHURCH, VIRGINIA

APPROVED  
PLANNING BOARD  
OF HOWARD COUNTY

DATE 9/15/72  
Thomas A. Harriot

APPROVED FOR PUBLIC WATER AND PUBLIC SEWERAGE SYSTEMS  
HOWARD COUNTY HEALTH DEPARTMENT  
Palmer F. Wine  
COUNTY HEALTH OFFICER  
DATE 9-14-72

APPROVED: HOWARD COUNTY OFFICE OF PLANNING AND ZONING  
Thomas A. Harriot  
PLANNING DIRECTOR  
DATE 9-15-72

APPROVED: DIVISION OF LAND DEVELOPMENT  
TRANSPORTATION PLANNING  
DATE 9/15/72

APPROVED: FOR PUBLIC WATER, PUBLIC SEWERAGE AND STORM  
DRAINAGE SYSTEMS AND ROADS  
HOWARD COUNTY DEPARTMENT OF PUBLIC WORKS  
Walter A. O'Brien  
DIRECTOR  
DATE 9/11/72

DRAWN DATE SCALE  
REV. 2-13-72 4-19-72 AS SHOWN  
KENT COOPER & ASSOCIATES  
ARCHITECTS  
3203 GRACE ST. N.W. WASHINGTON D.C.  
WALTER L. PHILLIPS, INC.  
CIVIL ENGINEERS  
901 W. BROAD ST. FALLS CHURCH, VA.

SITE PLAN  
COVER SHEET  
SECTION 1 - AREA 5 - LOT 3  
LONG REACH  
VILLAGE CENTER  
ASSEMBLY AND RECREATION BUILDING  
COLUMBIA ASSOCIATION  
COLUMBIA, HOWARD COUNTY, MARYLAND  
6th ELECTION DISTRICT

C-1

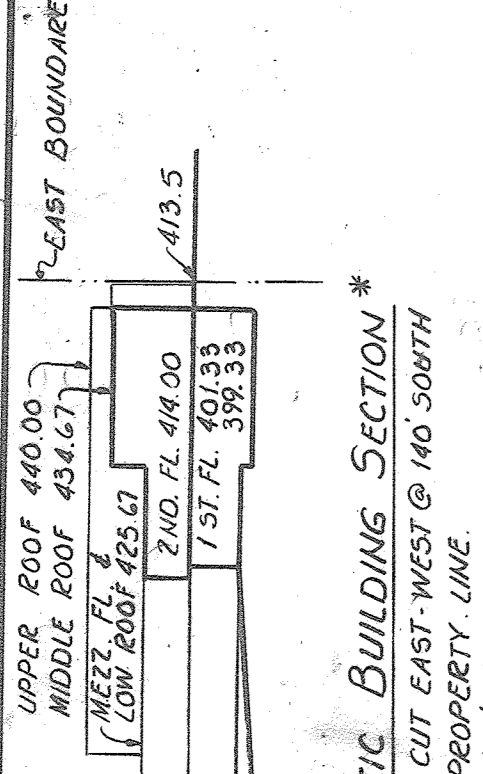
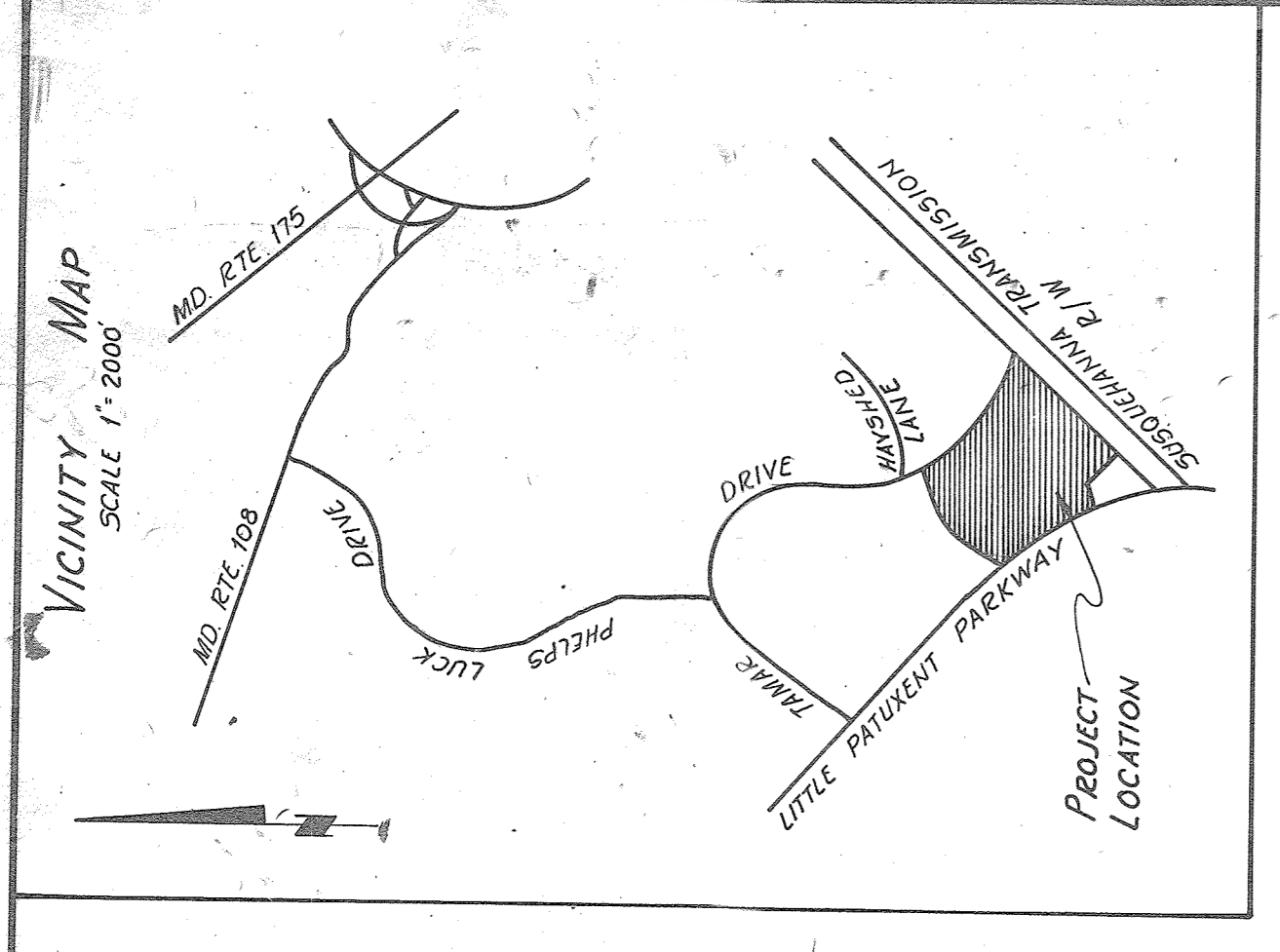
PROFESSIONAL ENGINEER  
I CERTIFY THAT THE PLAN OF DEVELOPMENT AND PLAN FOR CONTROL OF SILT AND EROSION MEETS THE REQUIREMENTS, STANDARDS AND SPECIFICATIONS OF THE HOWARD SOIL CONSERVATION DISTRICT  
Walter L. Phillips  
SIGNATURE  
9/13/72  
DATE

DEVELOPER  
I CERTIFY THAT ALL DEVELOPMENT AND/OR CONSTRUCTION WILL BE DONE ACCORDING TO THE PLAN OF DEVELOPMENT AND PLAN OF SILT AND SEDIMENT CONTROL.  
John A. Bender  
SIGNATURE AGENT  
JUNE 22, 1972  
DATE

HOWARD SOIL CONSERVATION DISTRICT  
THIS DEVELOPMENT PLAN IS APPROVED FOR SOIL EROSION AND SEDIMENT CONTROL BY THE HOWARD SOIL CONSERVATION DISTRICT.  
REVIEWED James M. Nelson 9-6-72  
DISTRICT CONSERVATIONIST DATE  
APPROVED Robert W. Ziehm 9-6-72  
HOWARD SOIL CONSERVATION DISTRICT DATE

APPROVED: FOR PUBLIC WATER AND PUBLIC SEWERAGE SYSTEMS  
HOWARD COUNTY HEALTH DEPARTMENT  
Palmer F. Wine  
COUNTY HEALTH OFFICER  
DATE 9-14-72

SDP-72-260



See Inset Below  
For Revision

VILLAGE OF LONGREACH  
SECT 1-AREA 5-PCL E  
PLAT BOOK 21, FOLIOS 87 TO 83

VILLAGE OF LONGREACH  
SECT 1-AREA 5-PCL A  
PLAT BOOK 21, FOLIOS 87 TO 83

Professional Certification (for Revision)  
I hereby certify that these plans  
were prepared or approved by me,  
and that I am a duly licensed Professional  
Engineer in the State of Maryland.  
License No: 18795  
Expiration Date: May 25, 2024

FUTURE LITTLE PATUXENT PARKWAY  
(MID RTE 115 - RELOCATED)  
NOTE: VERTICAL CURVE  
LITTLE PATUXENT PARKWAY

STORM DRAINAGE STRUCTURE SCHEDULE

NO	TYPE	LOCATION	INT. IN.	INT. OUT.	TOP ELEV.	REMARKS
T-30	6" INLET W/7" S	SEE PLAN & PROFILE	395.82	400.80	400.80	SEE PLAN & PROFILE
T-31	6" INLET W/7" S	SEE PLAN & PROFILE	395.87	399.70	399.70	SEE PLAN & PROFILE
T-32	6" INLET W/7" S	SEE PLAN & PROFILE	378.69	379.70	379.70	SEE PLAN & PROFILE
T-33	6" INLET W/7" S	SEE PLAN & PROFILE	392.00	392.00	392.00	SEE PLAN & PROFILE
S-23	570 END AND SUPPORT	SEE PLAN & PROFILE	386.72		386.72	SEE PLAN & PROFILE
G-24	570 END INLET GATE	SEE PLAN & PROFILE	418.50		418.50	SEE PLAN & PROFILE

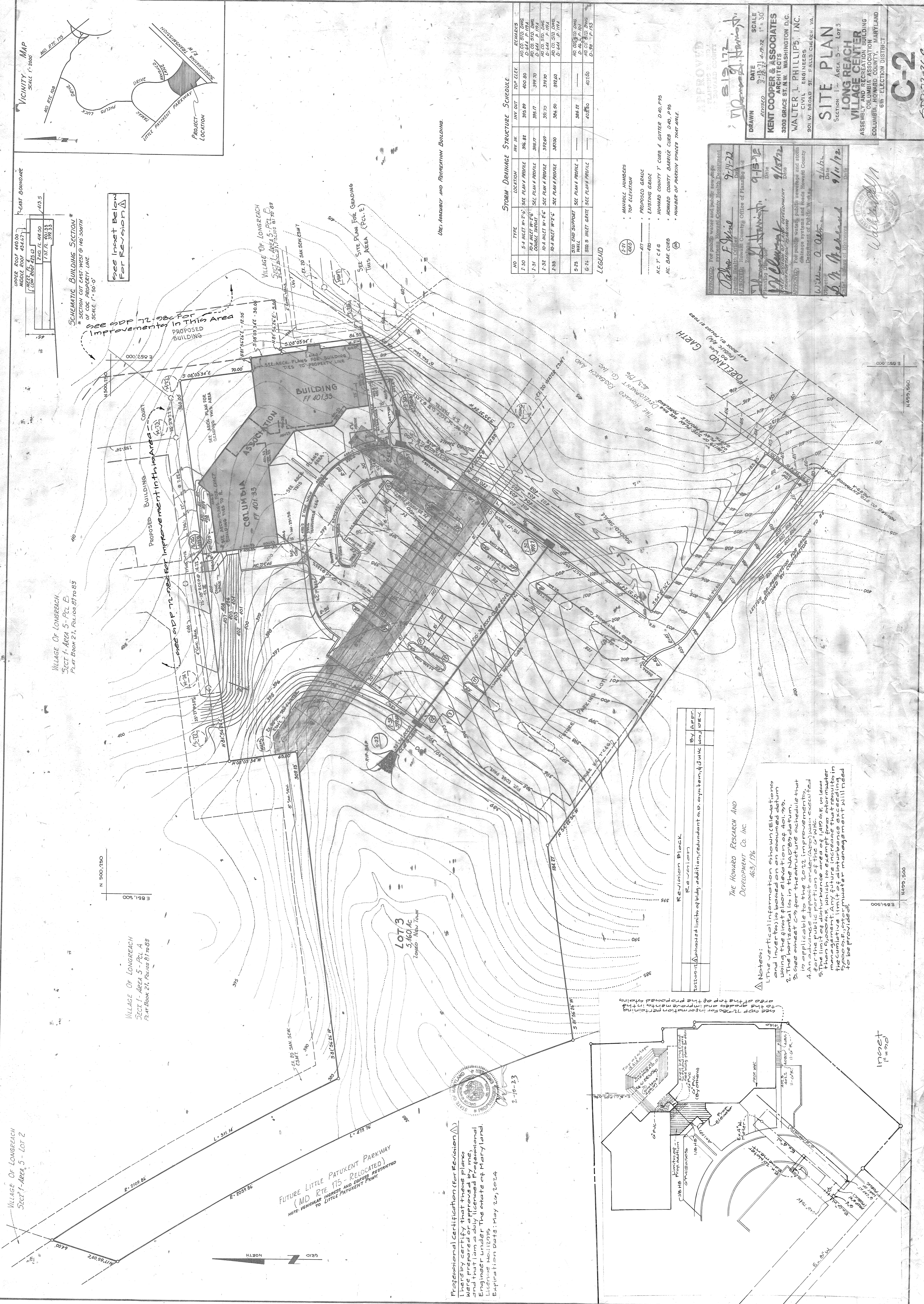
- LEGEND
- MINOR SURFACES
  - TOP ELEVATION
  - PROPOSED GRADE
  - EXISTING GRADE
  - HOWARD COUNTY T. CURB & GUTTER D-40, P-95
  - HOWARD COUNTY BARBER CURB D-40, P-95
  - MC BAR CURB
  - NUMBER OF PARKING SPACES THAT APPLY

APPROVED

DATE: 9-15-22  
SCALE: 1"=30'

DRAWN BY: [Signature]  
KENT COOPER & ASSOCIATES ARCHITECTS  
3205 GRACE ST. N.W. WASHINGTON, D.C.  
WALTER L. PHILLIPS, INC.  
CIVIL ENGINEERS  
301 W. BROAD ST. FALLS CHURCH, VA.

SITE PLAN  
SECTION 1- AREA 5 - LOT 3  
VILLAGE REACH  
VILLAGE CENTER  
ASSOCIATION BUILDING

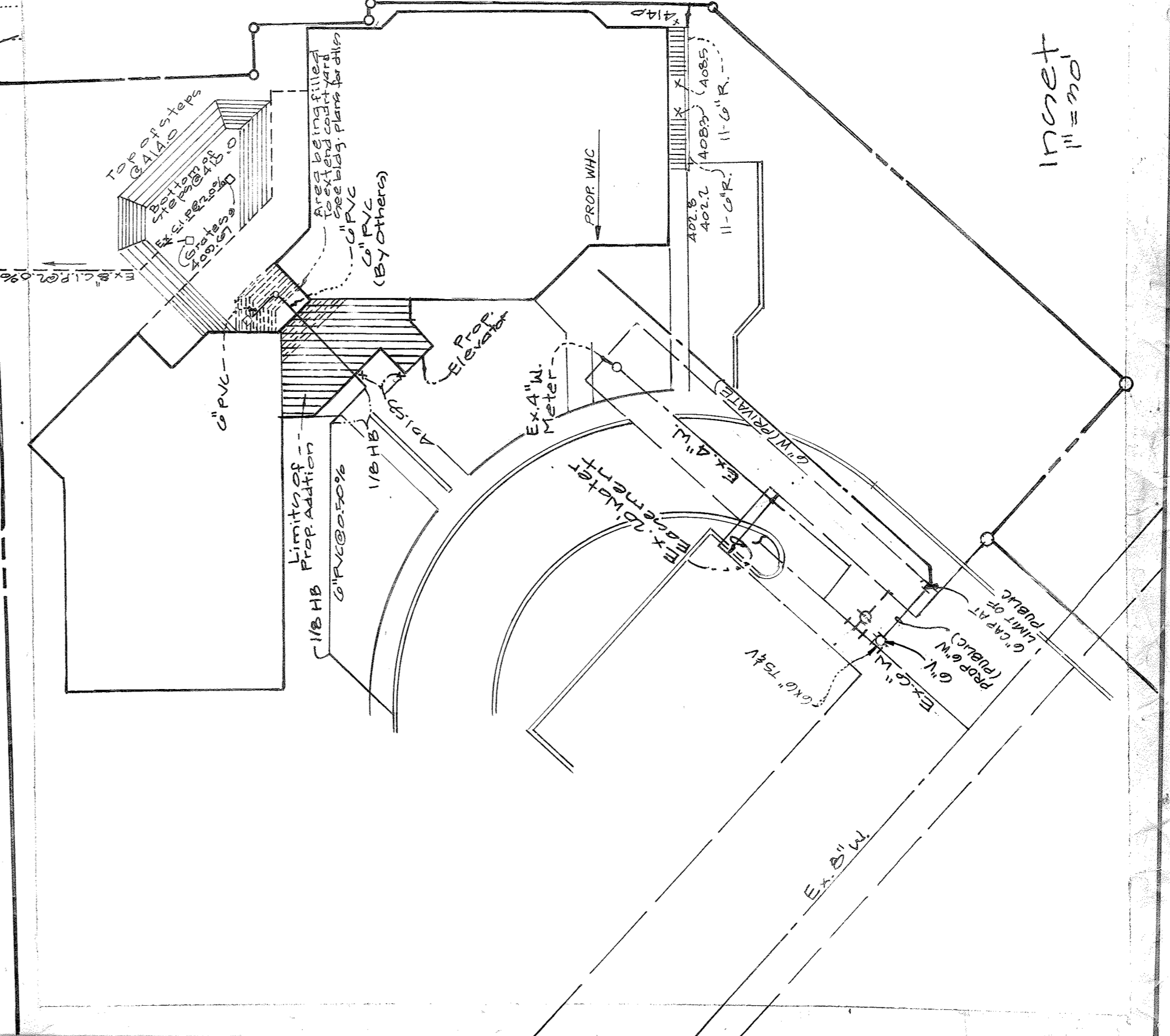


Revision Block

NO.	DESCRIPTION	DATE	BY	APPR.
1	Initial Issue	9/15/22	[Signature]	[Signature]
2	Revisions	9/15/22	[Signature]	[Signature]

Notes:

- The vertical information shown (Elevations and Grades) is based on an assumed datum of 400.00 feet above mean sea level.
- The horizontal is in the NAD 83 datum.
- See sheet C-2 for the structure schedule that is applicable to the 2022 improvements.
- An advance deposit order (AD) was executed.
- The limit of disturbance area of 1400 sq ft is less than 5000 sq ft which is exempt from stormwater management. Any future increase that results in more than 5000 sq ft of disturbance will need to be provided.



C-2  
SDP-12-26-C

VILLAGE OF LONGREACH  
SECT 1-AREA 5 - EDT 2

No.	Type	Width	Top Elev.	Inverts	4th Detail	Location
1-A	W/Plant	12"	409.17	407.17	15' Pedestrian gate inlet on driveway equal to gate inlet on approved actual	N 54256.6 E 1304.945
1-B	W/Plant	12"	409.17	406.50	406.49	N 54256.6 E 1304.945

Drainage Area Information (Per 2022)	Area	Area 'C'	In.
A	0.04	0.20	0.5
B	0.14	0.26	0.5
C	0.04	0.26	0.5
D	0.01	0.26	0.5

--- Contoured drainage divide  
--- Building drainage divide  
--- Drainage Area Designation

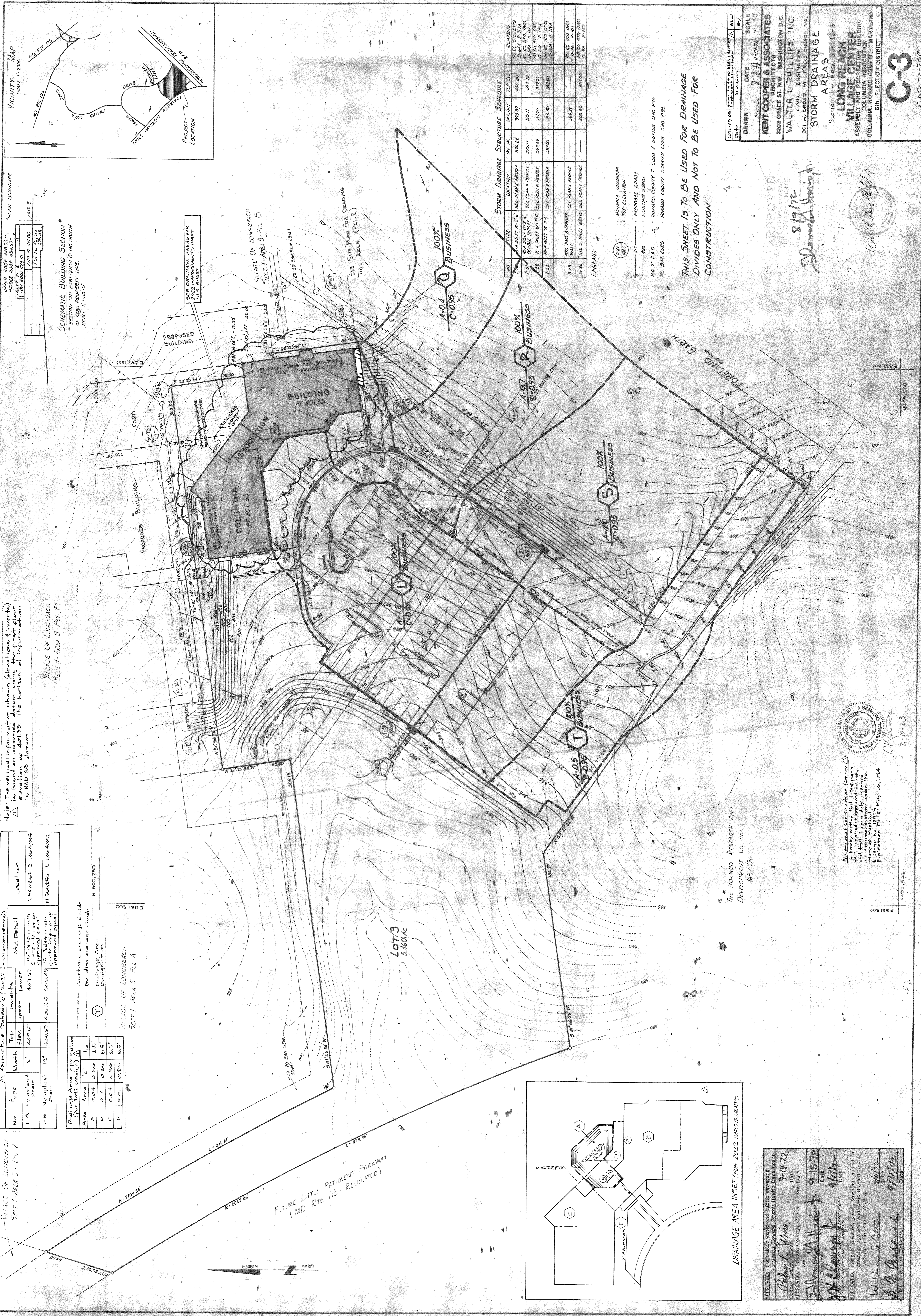
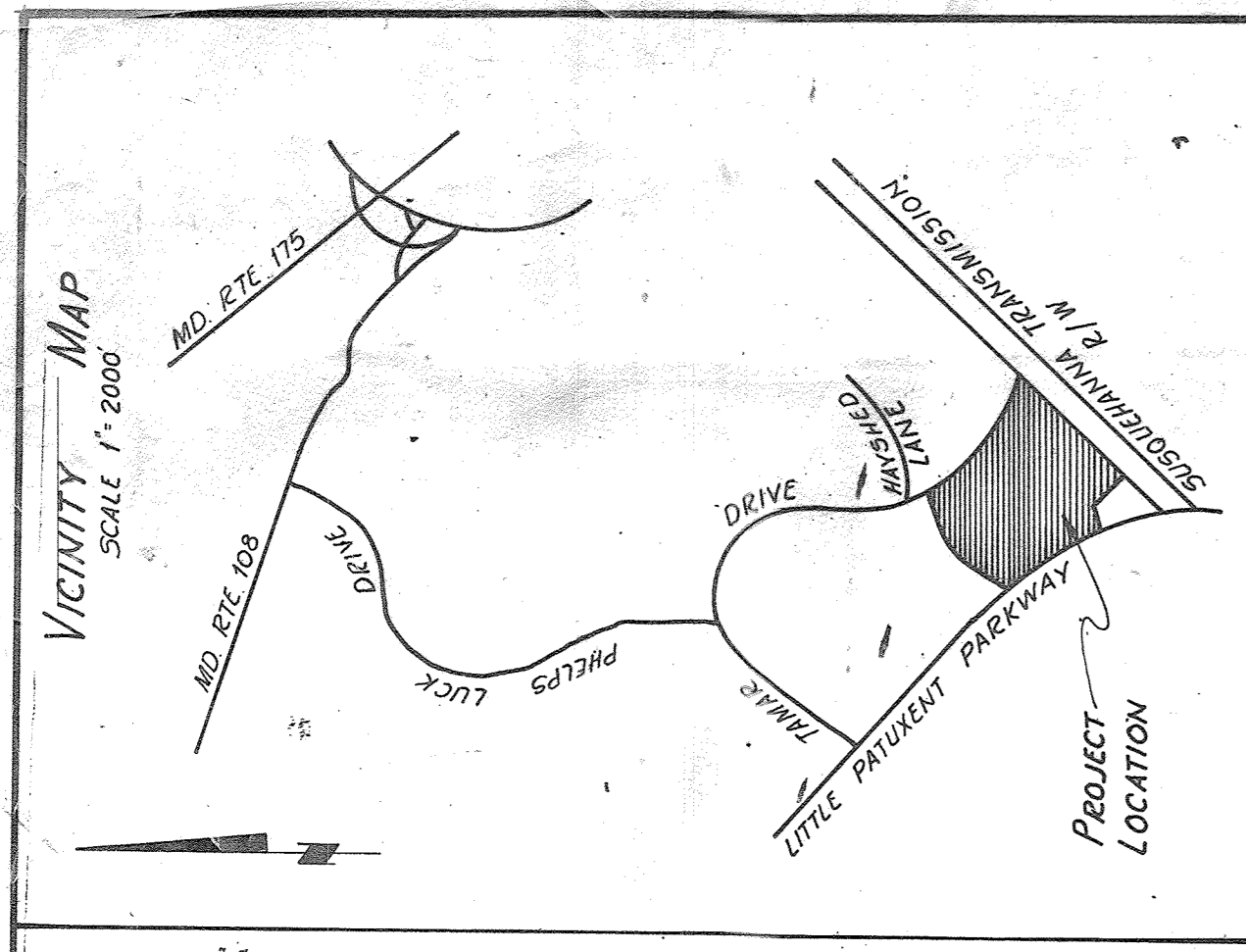
VILLAGE OF LONGREACH  
SECT 1-AREA 5 - PZ A

Note: The vertical information shown (elevations & inverts) is based on datum of 421.33. The horizontal information is NAD 83 datum.

VILLAGE OF LONGREACH  
SECT 1-AREA 5 - PZ E

VILLAGE OF LONGREACH  
SECT 1-AREA 5 - PZ A

Schematic Building Section  
SECTION CUT EAST-WEST @ 140 SOUTH  
SCALE 1"=30'-0"



ID	TYPE	LOCATION	INT. IN.	INT. OUT.	TOP ELEV.	REMARKS
1-A	10-A INLET W/PLANT	SEE PLAN & PROFILE	396.82	396.82	400.00	10-A-010 DWS D-444 P-1774
1-B	10-A INLET W/PLANT	SEE PLAN & PROFILE	396.17	396.17	399.70	10-A-010 DWS D-444 P-1774
1-C	10-A INLET W/PLANT	SEE PLAN & PROFILE	397.69	397.69	397.70	10-A-010 DWS D-444 P-1774
1-D	10-A INLET W/PLANT	SEE PLAN & PROFILE	397.00	397.00	397.70	10-A-010 DWS D-444 P-1774
1-E	10-A INLET W/PLANT	SEE PLAN & PROFILE	397.00	397.00	397.70	10-A-010 DWS D-444 P-1774
1-F	10-A INLET W/PLANT	SEE PLAN & PROFILE	397.00	397.00	397.70	10-A-010 DWS D-444 P-1774
1-G	10-A INLET W/PLANT	SEE PLAN & PROFILE	397.00	397.00	397.70	10-A-010 DWS D-444 P-1774
1-H	10-A INLET W/PLANT	SEE PLAN & PROFILE	397.00	397.00	397.70	10-A-010 DWS D-444 P-1774
1-I	10-A INLET W/PLANT	SEE PLAN & PROFILE	397.00	397.00	397.70	10-A-010 DWS D-444 P-1774
1-J	10-A INLET W/PLANT	SEE PLAN & PROFILE	397.00	397.00	397.70	10-A-010 DWS D-444 P-1774
1-K	10-A INLET W/PLANT	SEE PLAN & PROFILE	397.00	397.00	397.70	10-A-010 DWS D-444 P-1774
1-L	10-A INLET W/PLANT	SEE PLAN & PROFILE	397.00	397.00	397.70	10-A-010 DWS D-444 P-1774
1-M	10-A INLET W/PLANT	SEE PLAN & PROFILE	397.00	397.00	397.70	10-A-010 DWS D-444 P-1774
1-N	10-A INLET W/PLANT	SEE PLAN & PROFILE	397.00	397.00	397.70	10-A-010 DWS D-444 P-1774
1-O	10-A INLET W/PLANT	SEE PLAN & PROFILE	397.00	397.00	397.70	10-A-010 DWS D-444 P-1774
1-P	10-A INLET W/PLANT	SEE PLAN & PROFILE	397.00	397.00	397.70	10-A-010 DWS D-444 P-1774
1-Q	10-A INLET W/PLANT	SEE PLAN & PROFILE	397.00	397.00	397.70	10-A-010 DWS D-444 P-1774
1-R	10-A INLET W/PLANT	SEE PLAN & PROFILE	397.00	397.00	397.70	10-A-010 DWS D-444 P-1774
1-S	10-A INLET W/PLANT	SEE PLAN & PROFILE	397.00	397.00	397.70	10-A-010 DWS D-444 P-1774
1-T	10-A INLET W/PLANT	SEE PLAN & PROFILE	397.00	397.00	397.70	10-A-010 DWS D-444 P-1774
1-U	10-A INLET W/PLANT	SEE PLAN & PROFILE	397.00	397.00	397.70	10-A-010 DWS D-444 P-1774
1-V	10-A INLET W/PLANT	SEE PLAN & PROFILE	397.00	397.00	397.70	10-A-010 DWS D-444 P-1774
1-W	10-A INLET W/PLANT	SEE PLAN & PROFILE	397.00	397.00	397.70	10-A-010 DWS D-444 P-1774
1-X	10-A INLET W/PLANT	SEE PLAN & PROFILE	397.00	397.00	397.70	10-A-010 DWS D-444 P-1774
1-Y	10-A INLET W/PLANT	SEE PLAN & PROFILE	397.00	397.00	397.70	10-A-010 DWS D-444 P-1774
1-Z	10-A INLET W/PLANT	SEE PLAN & PROFILE	397.00	397.00	397.70	10-A-010 DWS D-444 P-1774

MANHOLE NUMBERS  
TOP ELEVATION  
PROPOSED GRADE  
EXISTING GRADE  
HOWARD COUNTY T. CURB & GUTTER D-40, P-19  
HOWARD COUNTY GUTTER D-40, P-19

THIS SHEET IS TO BE USED FOR DRAINAGE DIVIDES ONLY AND NOT TO BE USED FOR CONSTRUCTION

DATE	9-15-72	SCALE	1"=30'
DRAWN	KENT COOPER & ASSOCIATES ARCHITECTS	DATE	4-19-72
3203 GRACE ST. N.W. WASHINGTON D.C.	WALTER L. PHILLIPS, INC. CIVIL ENGINEERS	301 W. BROAD ST. FALLS CHURCH, VA.	
STORM DRAINAGE AREA 5			
SECTION 1-AREA 5 - LOT 3			
VILLAGE CENTER ASSEMBLY AND REGISTRATION BUILDING COLUMBIA ASSOCIATION MARYLAND			
6TH ELECTION DISTRICT			

APPROVED: For public water and public sewerage systems, Howard County Health Department

*Robert E. Wilson* 9-14-72  
County Health Officer

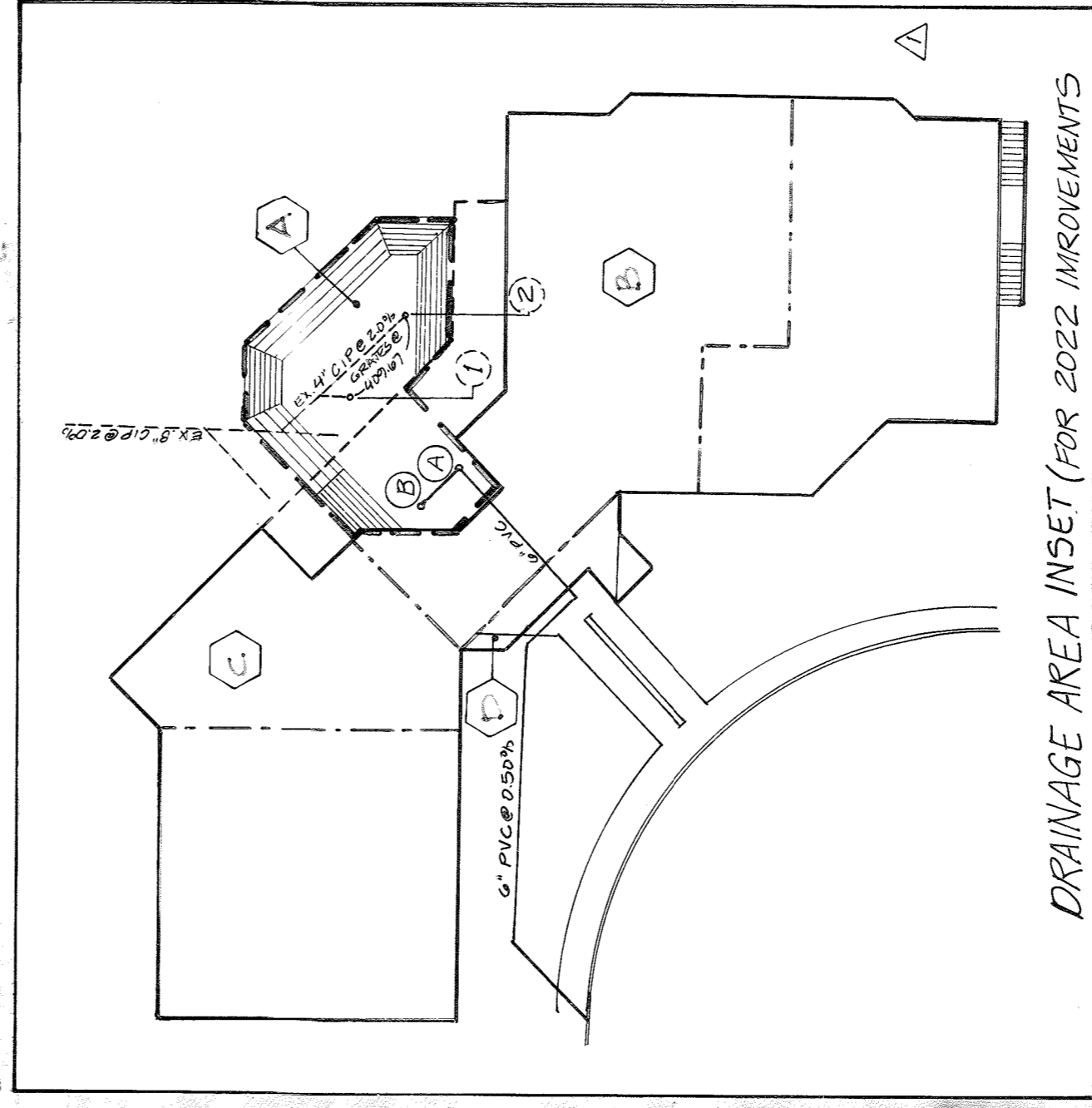
APPROVED: Howard County Office of Planning and Zoning

*William A. O'Connell* 9-15-72  
Planning Director

APPROVED: For public water, public sewerage and storm drainage, Howard County Department of Public Works

*William A. O'Connell* 9/15/72  
Director

*William A. O'Connell* 9/11/72  
Director



DRAINAGE AREA INSET (FOR 2022 IMPROVEMENTS)

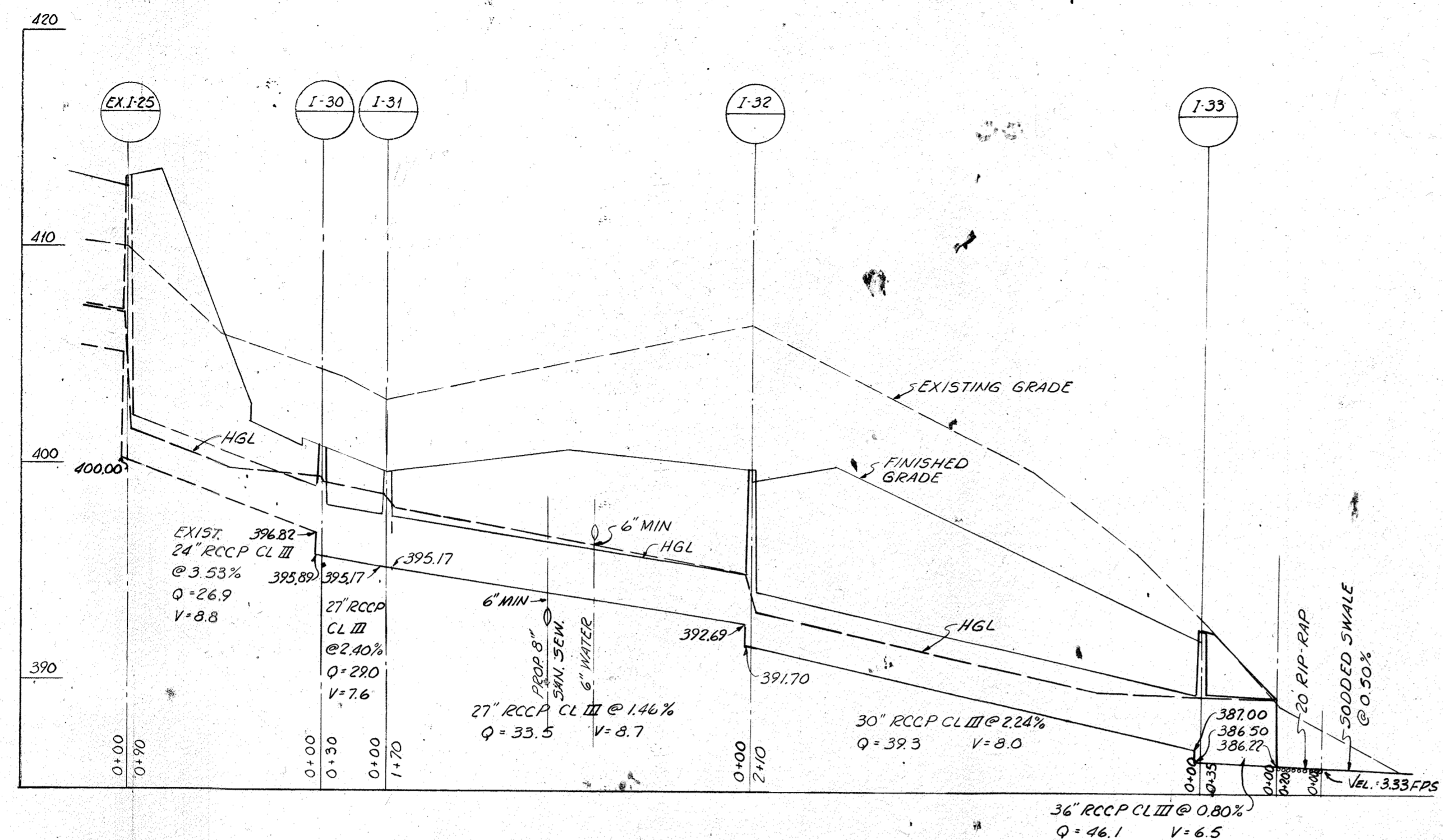
Professional Certification (Per 2022)

*William A. O'Connell* 2-10-73  
Professional Engineer

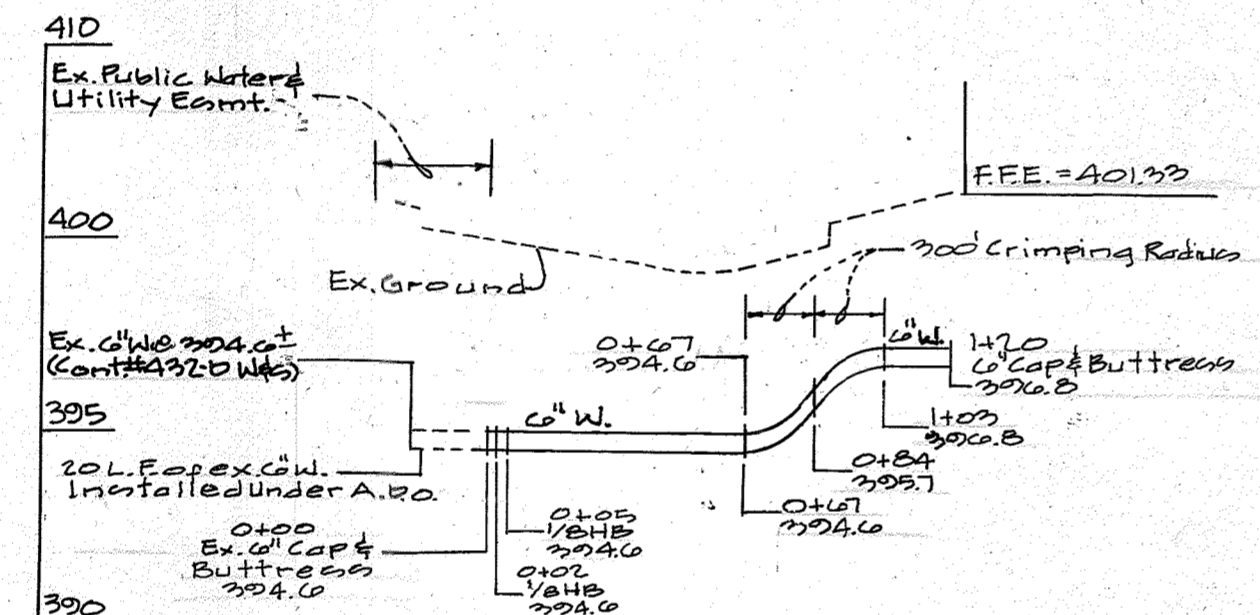
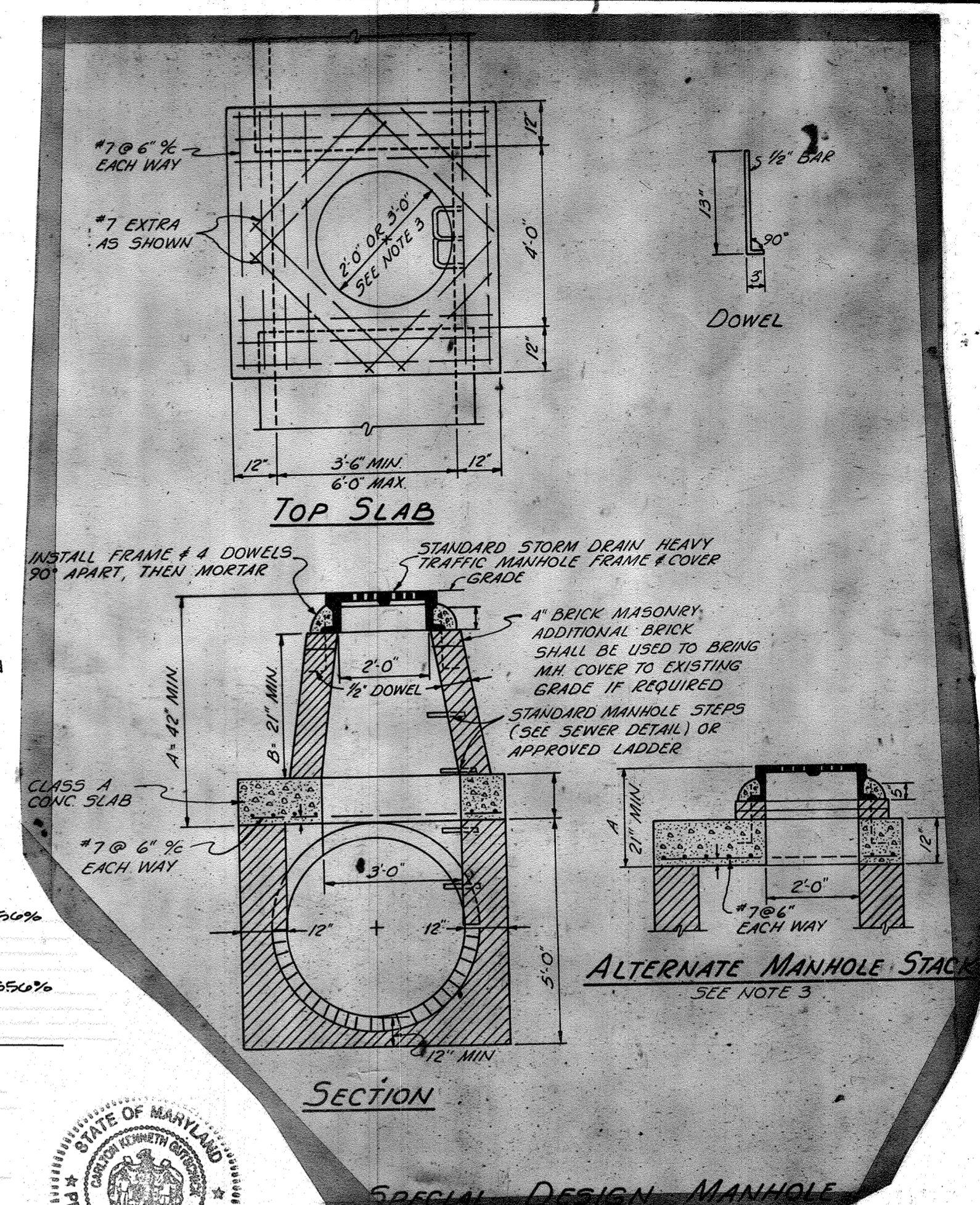
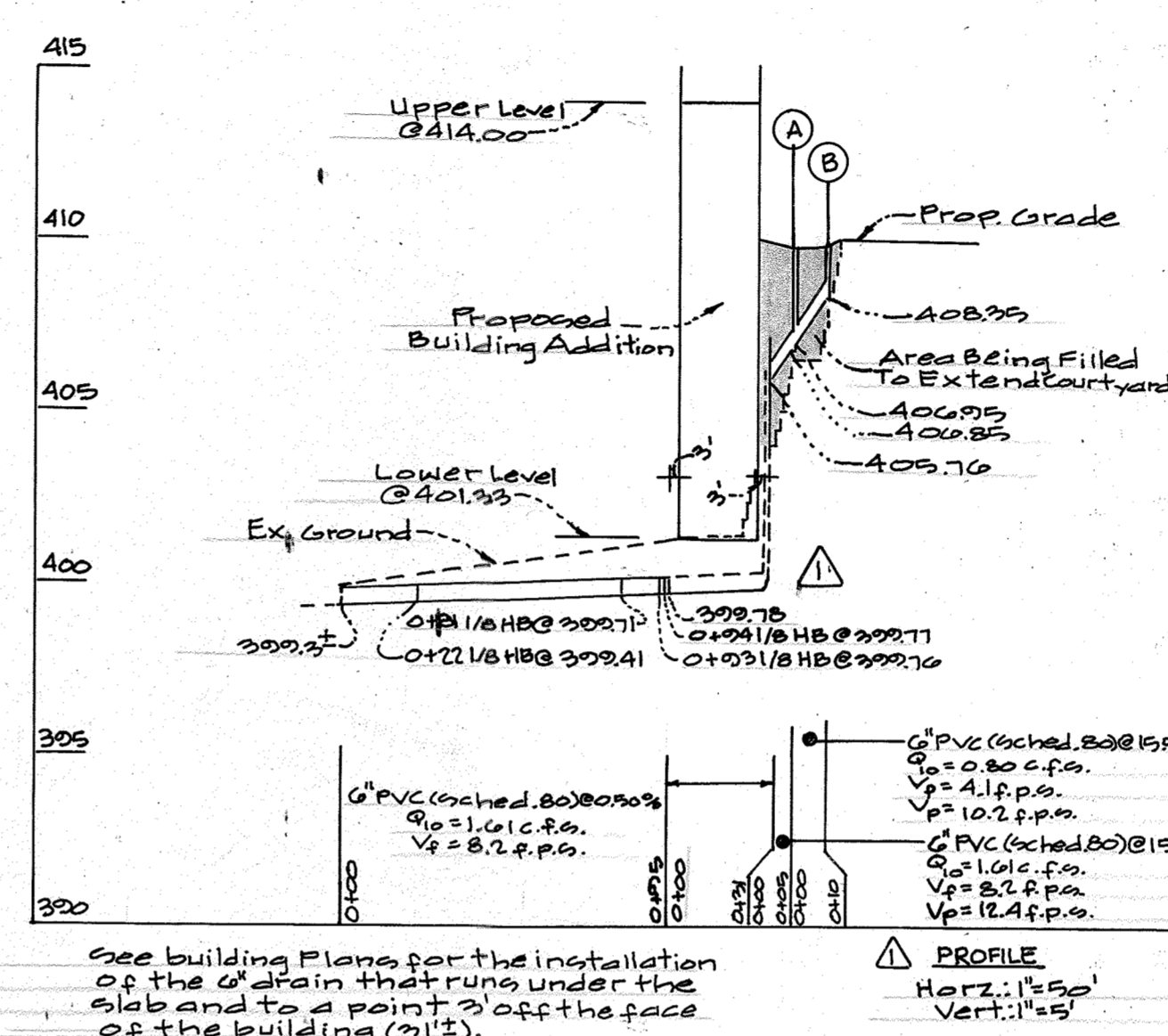
*William A. O'Connell* 2-10-73  
Professional Engineer

C-3

2-10-73



- NOTES:**
- 1 WALLS, BOTTOM SLAB AND INVERT SHALL BE BRICK OR PLAIN CLASS 'A' CONCRETE POURED IN PLACE
  - 2 FOR PIPES 36\"/>

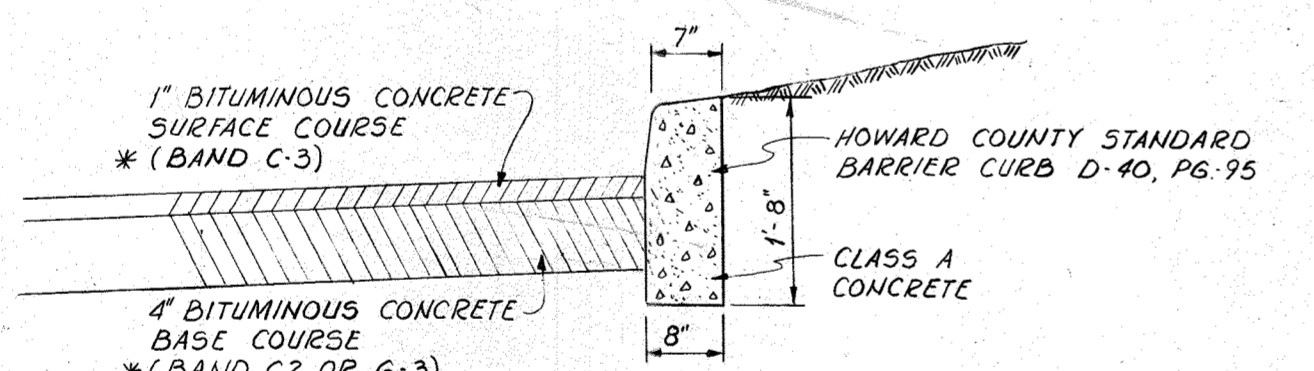


Professional Certification (For Revision) I hereby certify that these plans were prepared or approved by me, and that I am a duly licensed Professional Engineer under the state of Maryland. License No.: 17075 Expiration Date: May 26, 2024

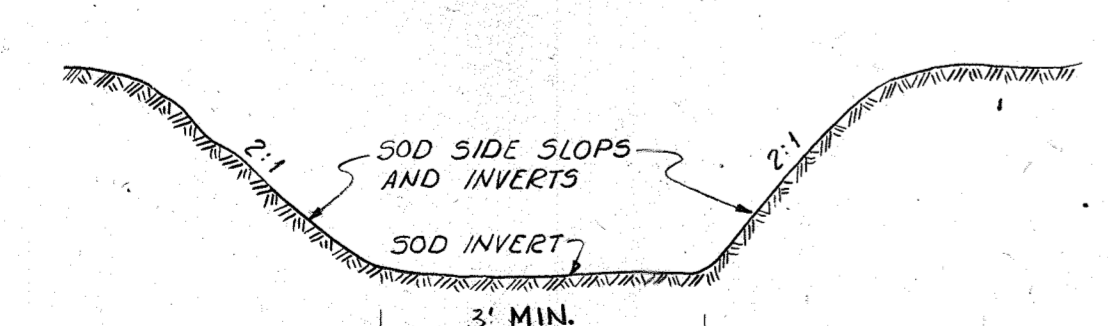
DATE	REVISION	BY	APPR.
2022-09-08	ADDED REDUNDANT STORM DRAIN SYSTEM AND G'NHC	WSI	DEV

APPROVED  
PLANNING BOARD OF HOWARD COUNTY  
DATE 9/19/72  
THOMAS L. HANCOCK  
Planning Director

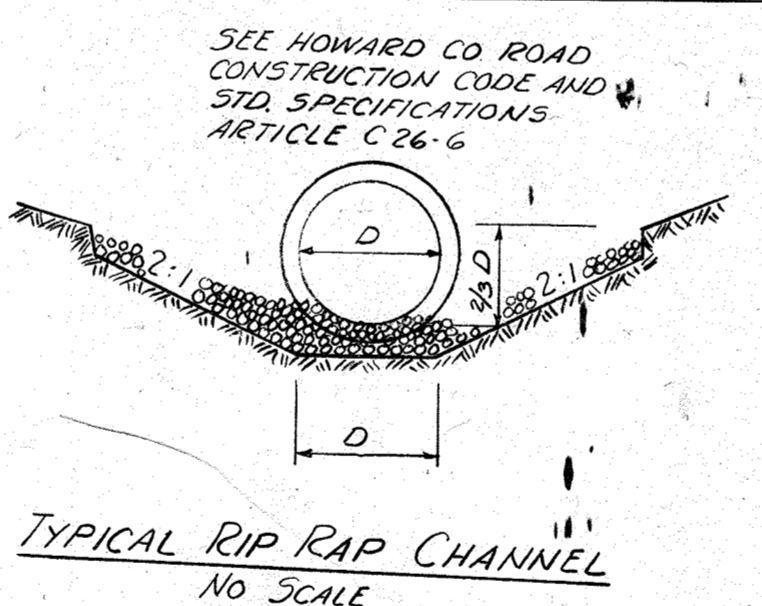
APPROVED: For public water and public sewerage systems Howard County Health Department  
APPROVED: County Health Officer  
APPROVED: Howard County, Office of Planning and Zoning  
THOMAS L. HANCOCK  
Planning Director  
APPROVED: For public water, public sewerage and storm drainage systems and roads Howard County Department of Public Works  
WILLIAM G. ALTMAN  
Director  
B. M. WHELAN  
Chief, Bureau of Highways



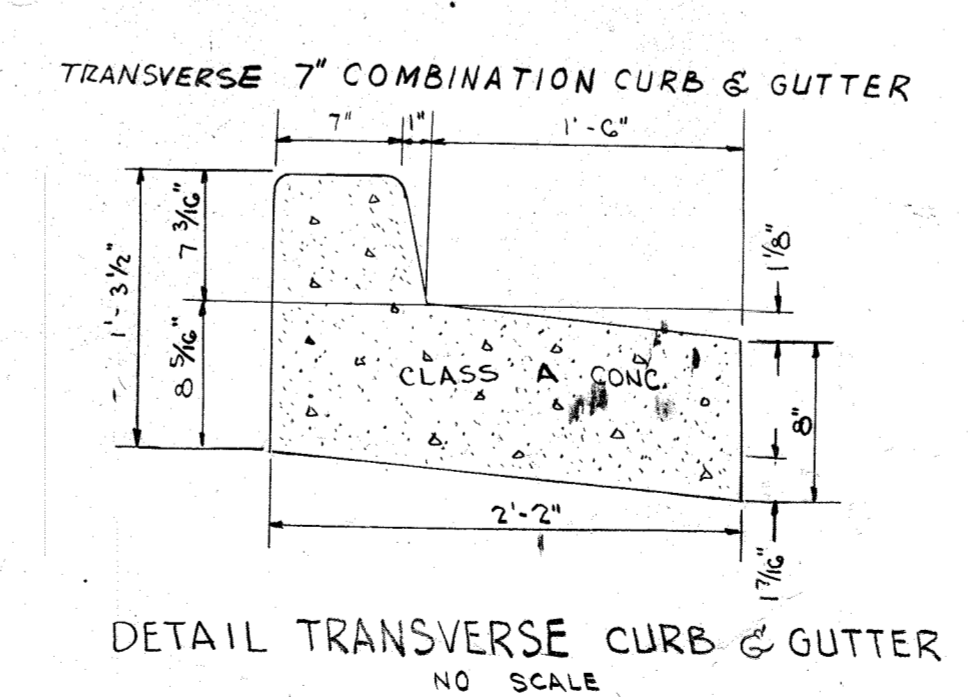
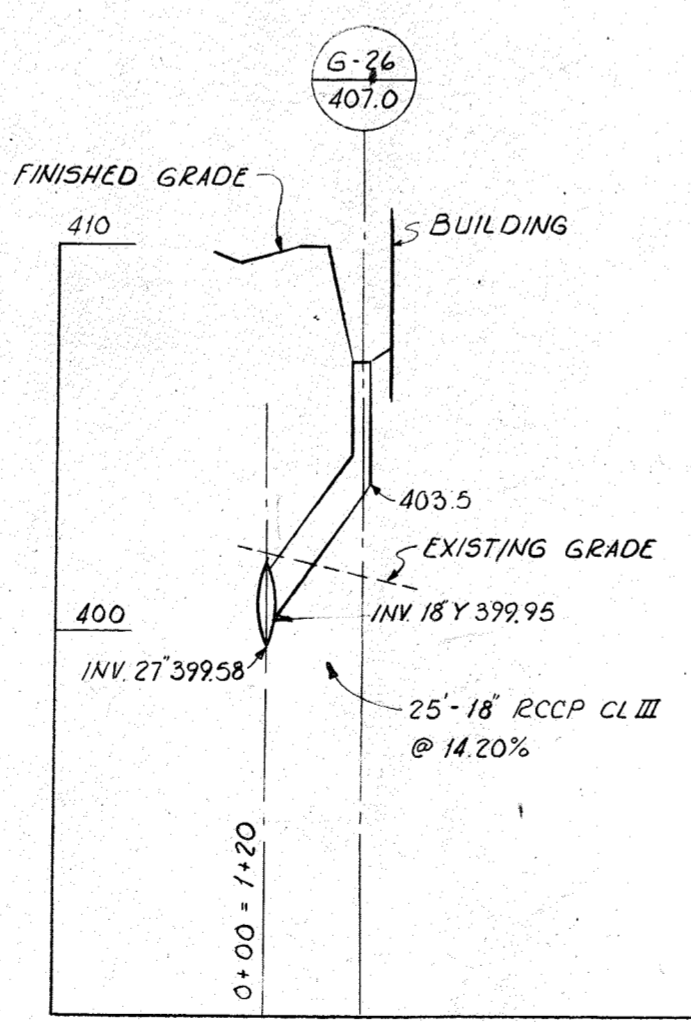
DETAIL CONCRETE BARRIER CURB AND PARKING LOT PAVING  
NO SCALE  
\* ARTICLE C-31, BITUMINOUS CONCRETE SPECIFICATION 'B' OF THE ROAD CONSTRUCTION CODE AND STANDARD SPECIFICATION OF HOWARD COUNTY, MARYLAND



NOTE: EXISTING DITCH APPROACHING PROPOSED ENDWALL TO BE TRIMMED IN ACCORDANCE WITH ARTICLE C-6 OF THE HOWARD COUNTY CONSTRUCTION CODE AND STANDARD SPECIFICATION.  
TYPICAL DRAINAGE DITCH  
NO SCALE



TYPICAL RIP RAP CHANNEL  
NO SCALE



DETAIL TRANSVERSE CURB & GUTTER  
NO SCALE

DRAWN	DATE	SCALE
REVISED	2-13-71	1" = 5' VERT.
	2-12-72	1" = 50' HORIZ.

**KENT COOPER & ASSOCIATES**  
ARCHITECTS  
3203 GRACE ST. N.W. WASHINGTON D.C.  
**WALTER L. PHILLIPS, INC.**  
CIVIL ENGINEERS  
501 W. BROAD ST. FALLS CHURCH, VA.

PROFILES & DETAILS  
SECTION 1 ~ AREA 5 ~ LOT 3  
**LONG REACH**  
VILLAGE CENTER  
ASSEMBLY AND RECREATION BUILDING  
COLUMBIA ASSOCIATION  
COLUMBIA, HOWARD COUNTY, MARYLAND  
6TH ELECTION DISTRICT

# C-4