

NOTE: ELEVATIONS AS SHOWN ARE BASED ON S.R.C. B.M., SPIKE IN G & E CO. POLE #204511 ELEV. 229.77

NOTE: TOPOGRAPHY AS SHOWN HEREON IS TAKEN FROM AVAILABLE SOURCES AND DOES NOT CONSTITUTE A FIELD SURVEY.

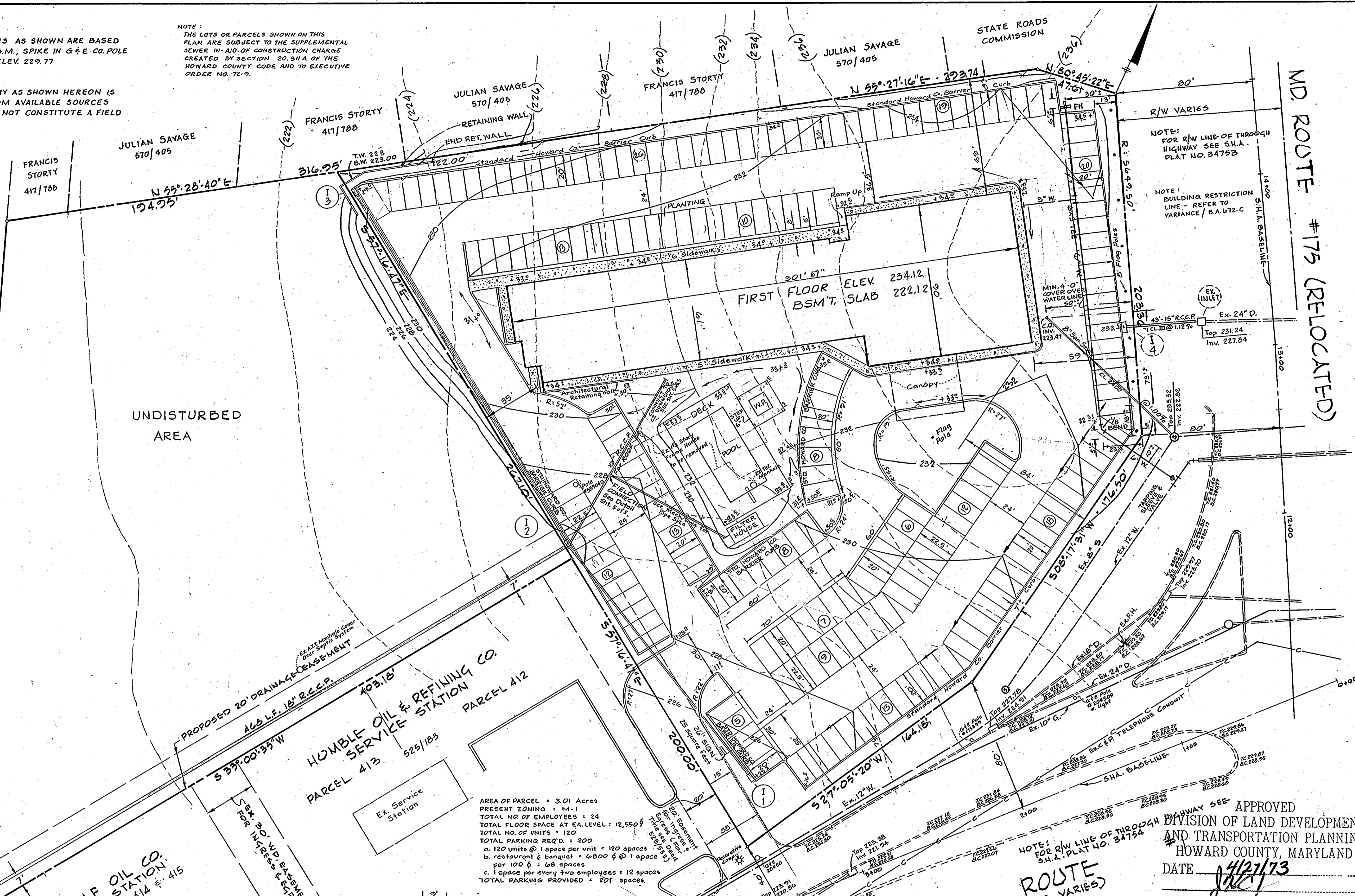
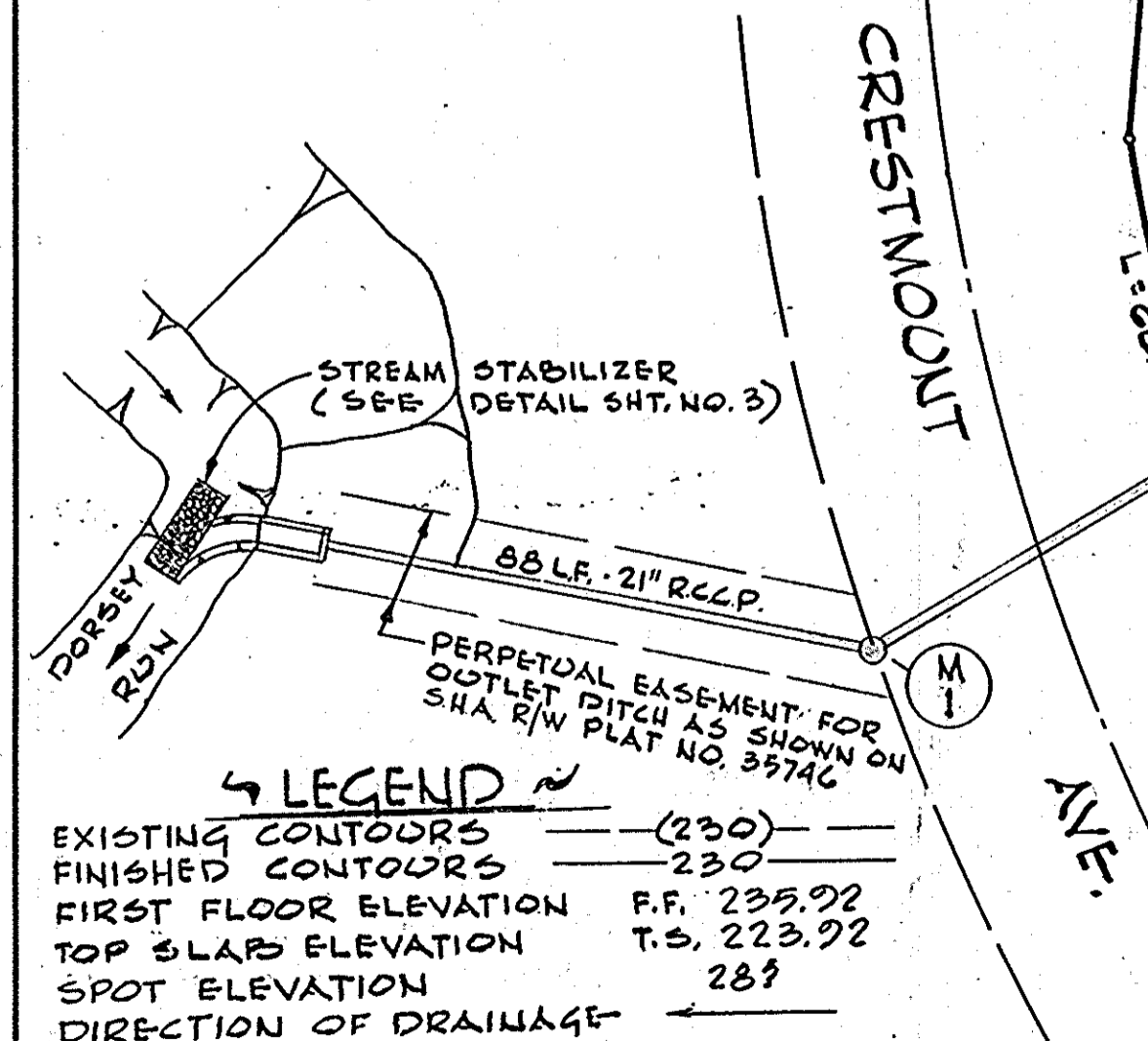
NOTE: ALL RADII ON CURVE RETURNS IN PARKING AREA ARE 5' UNLESS OTHERWISE NOTED.

NOTE: THE LOTS OR PARCELS SHOWN ON THIS PLAN ARE SUBJECT TO THE SUPPLEMENTAL SEWER IN-AID-OF CONSTRUCTION CHARGE CREATED BY SECTION 20.31A OF THE HOWARD COUNTY CODE AND TO EXECUTIVE ORDER NO. 76-9.

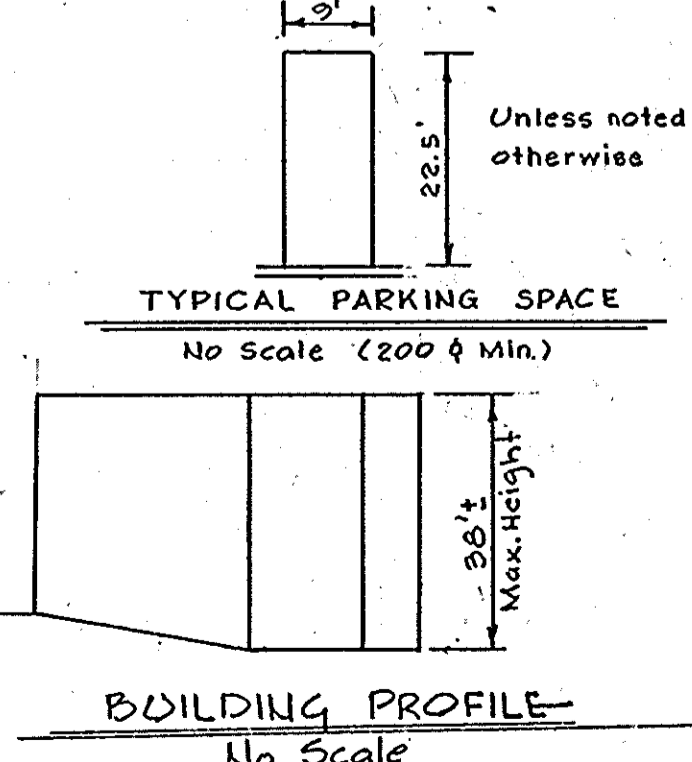
- GENERAL NOTES**
- These plans and the contract specifications shall be mutually supplementary.
 - It shall be the Contractor's responsibility to perform the work in such a manner as to prevent the washing of any topsoil, silt or debris onto adjacent properties and he shall be held responsible for any damage incurred.
 - Tops of structures shall not be set until finish grade is completed to avoid unnecessary adjustments.
 - All finish grading and pouring shall be done in such a manner as to preclude the ponding of water.
 - Lengths shown for sewers are measured between centers of structures and are not to be used for horizontal stationing. Open stakeout, hold inverts and adjust the percent of grade to reflect any differences between scaled and computed.
 - The Permittee shall provide adequate means of cleaning trucks and other equipment of mud prior to entering Maryland State Roads Right-of-Way, and it is the permittee's responsibility to clean street and alley dust, and take whatever measures are necessary to insure that the road is maintained in a clean, mud and dust free condition at all times.
 - The Contractor shall obtain a permit from the Howard County Dept. of Public Works to make the sewer tap to existing manhole.
 - Sediment Control as shown on plan shall conform with the Howard County Soils Conservation District See sheet 3 of 5.
 - Existing utilities are shown from the best available plans. Contractor shall verify location and elevations of all existing structures before proceeding with construction.
 - Water Meters to be compound meters.
 - All construction shall conform with Howard County and M.S.R.C. standards and specifications.

Reviewed for Howard S.C.R. NAME
and meets Technical Requirements.
Charles E. Vulliamy Date 5/18/73
Signature
U.S. Soil Conservation Service

This Development Plan is Approved for Soil Erosion and Sediment Control by The Howard Soil Conservation District.
Richard W. Ziehm Date 5/18/73
Approved Howard S.C.D.



AREA OF PARCEL = 3.01 Acres
PRESENT ZONING = M-1
TOTAL NO. OF EMPLOYEES = 24
TOTAL FLOOR SPACE AT EA. LEVEL = 12,560 sq ft
TOTAL NO. OF UNITS = 120
TOTAL PARKING REQ'D. = 200
a. 120 units @ 1 space per unit = 120 spaces
b. restaurant & banquet @ 6000 sq ft @ 1 space per 100 sq ft = 60 spaces
c. 1 space per every two employees = 12 spaces
TOTAL PARKING PROVIDED = 201 spaces

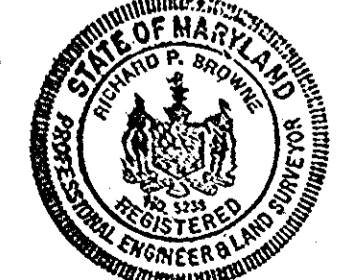


APPROVED: For Public Water and Public Sewerage Systems; Howard County Health Department
Palmer E. Ward County Health Officer Date 5-30-73

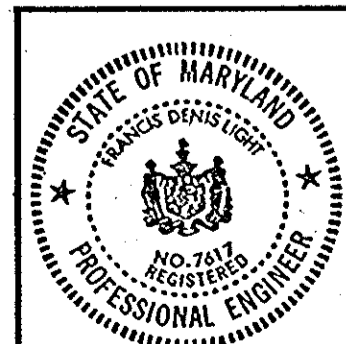
APPROVED: Howard County Office of Planning and Zoning
James H. Hines Planning Director Date 5-31-73

APPROVED: For Public Water, Public Sewerage and Storm Drainage Systems and Roads
William A. Altman Director Date 5/25/73

APPROVED: For Public Water, Public Sewerage and Storm Drainage Systems and Roads
Richard W. Ziehm Chief, Bureau of Highways Date 5/25/73



Richard P. Browne Reg. No. 5238 DATE
F. Denis Light Reg. No. 7617 DATE 4/27/73



APPROVED DIVISION OF LAND DEVELOPMENT AND TRANSPORTATION PLANNING HOWARD COUNTY, MARYLAND
DATE 4/27/73

| Rev Date | Rev No. | Revision Description |
|----------|---------|----------------------|
| | | |

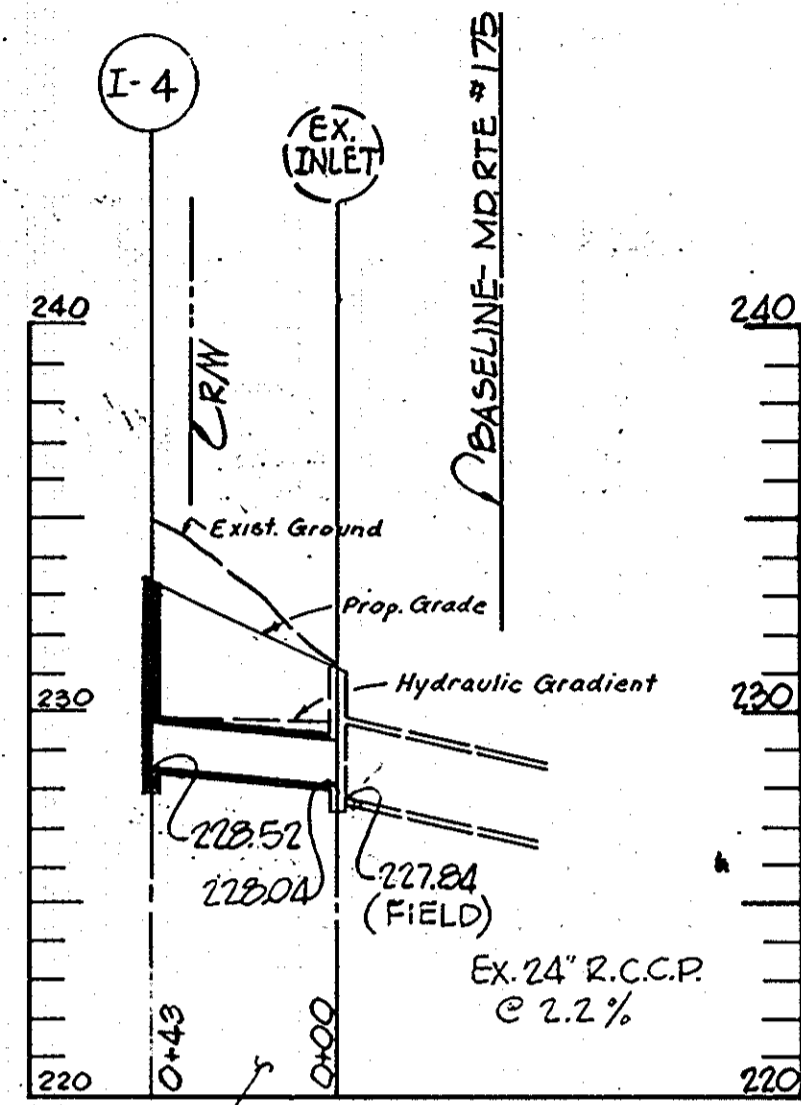
RICHARD P. BROWNE ASSOCIATES
ENGINEERS SURVEYORS PLANNERS ARCHITECTS
PEACHTREE CITY, GEORGIA
COLUMBIA, MD. WAYNE, N. J.

HOLIDAY INN SITE DEVELOPMENT PLAN
6th Election District, Howard Co., Md.
Parcel 134 Tax Map 43

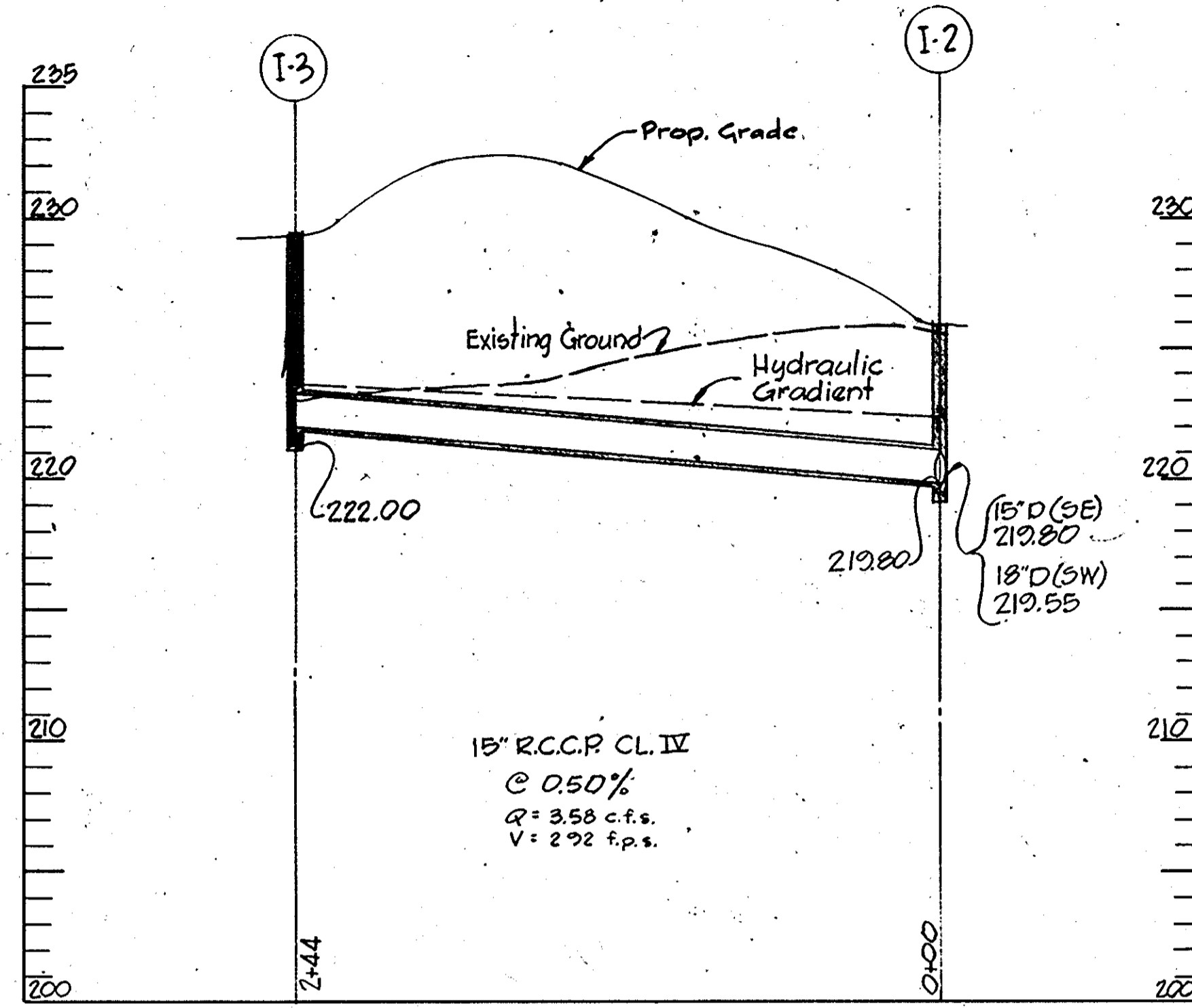
| | | |
|--------------|--------------------|-----------------|
| Des. By E.C. | Scale 1" = 30' | Dwg. No. 1 of 5 |
| Drn. By JB | Date Apr. 27, 1973 | Proj. No. 3314 |
| Chk. By | Approved | |

STORM DRAINAGE STRUCTURE SCHEDULE

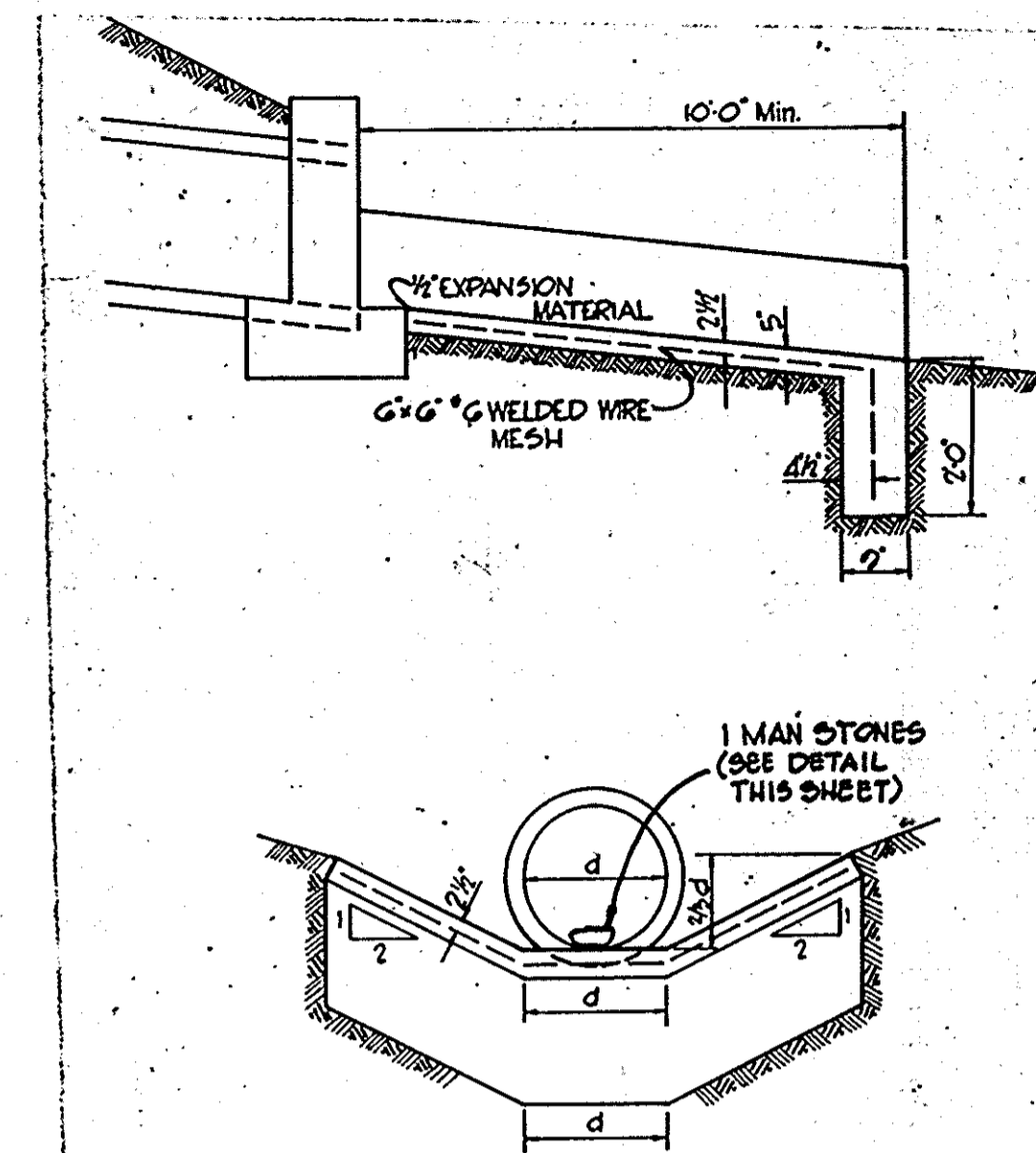
| NO. | TYPE | LOCATION | INV. IN | INV. OUT | TOP ELEV. | REMARKS |
|-----|----------------|----------|---------|----------|-----------|------------------------|
| I-1 | A-S INLET | SEE PLAN | 222.06 | 225.5 | | HO. CO. ST'D. Dwg. 64A |
| I-2 | A-S INLET | " " | 219.55 | 225.8 | | " " " " " " |
| I-3 | A-S INLET | " " | 221.05 | 227.5 | | " " " " " " |
| I-4 | A-S INLET | " " | 228.47 | 233.5 | | " " " " " " |
| M-1 | ST'D. MANHOLE | SEE PLAN | 203.45 | 203.20 | 202.20 | HO. CO. ST'D. D-103 |
| E-1 | ST'D. "C" WALL | | 194.51 | | | HO. CO. ST'D. D-52 |



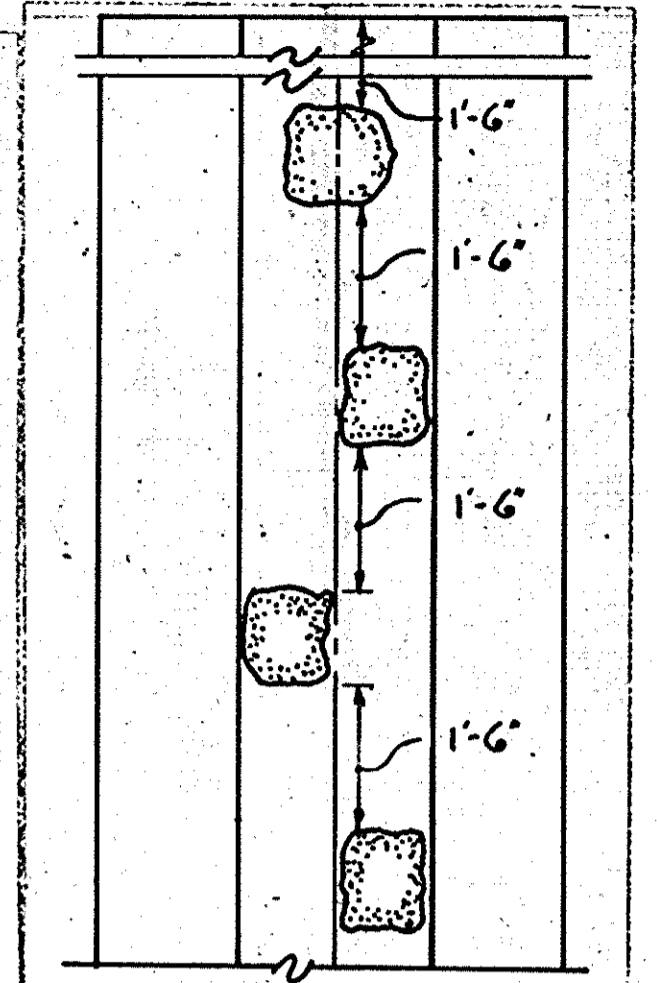
15' R.C.C.P. CL. III
@ 1.12 %
Q = 2.86 C.F.S.
V = 2.32 F.P.S.



15' R.C.C.P. CL. IV
@ 0.50 %
Q = 3.58 C.F.S.
V = 2.92 F.P.S.

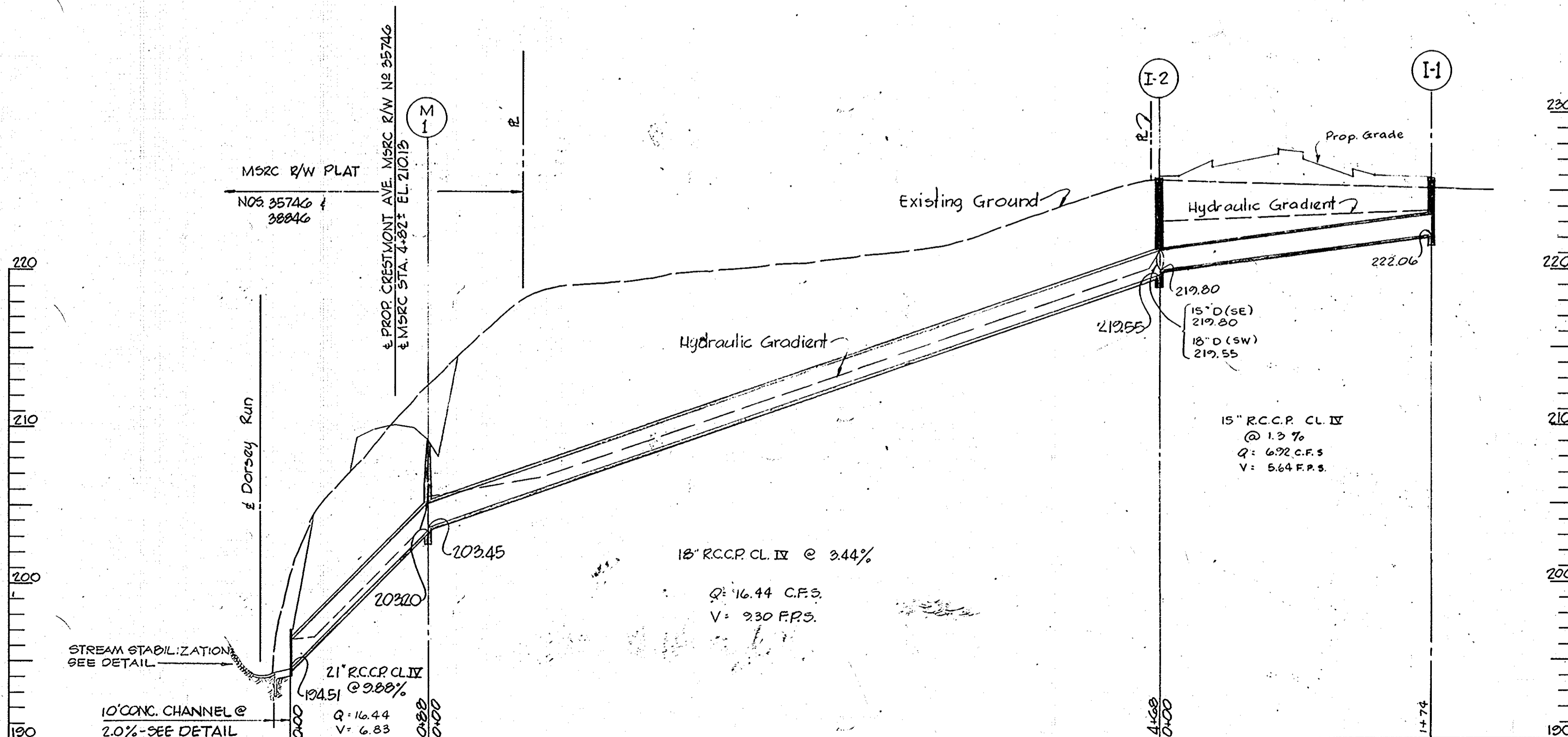


TYPICAL CONCRETE CHANNEL AND CUTOFF WALL
NO SCALE



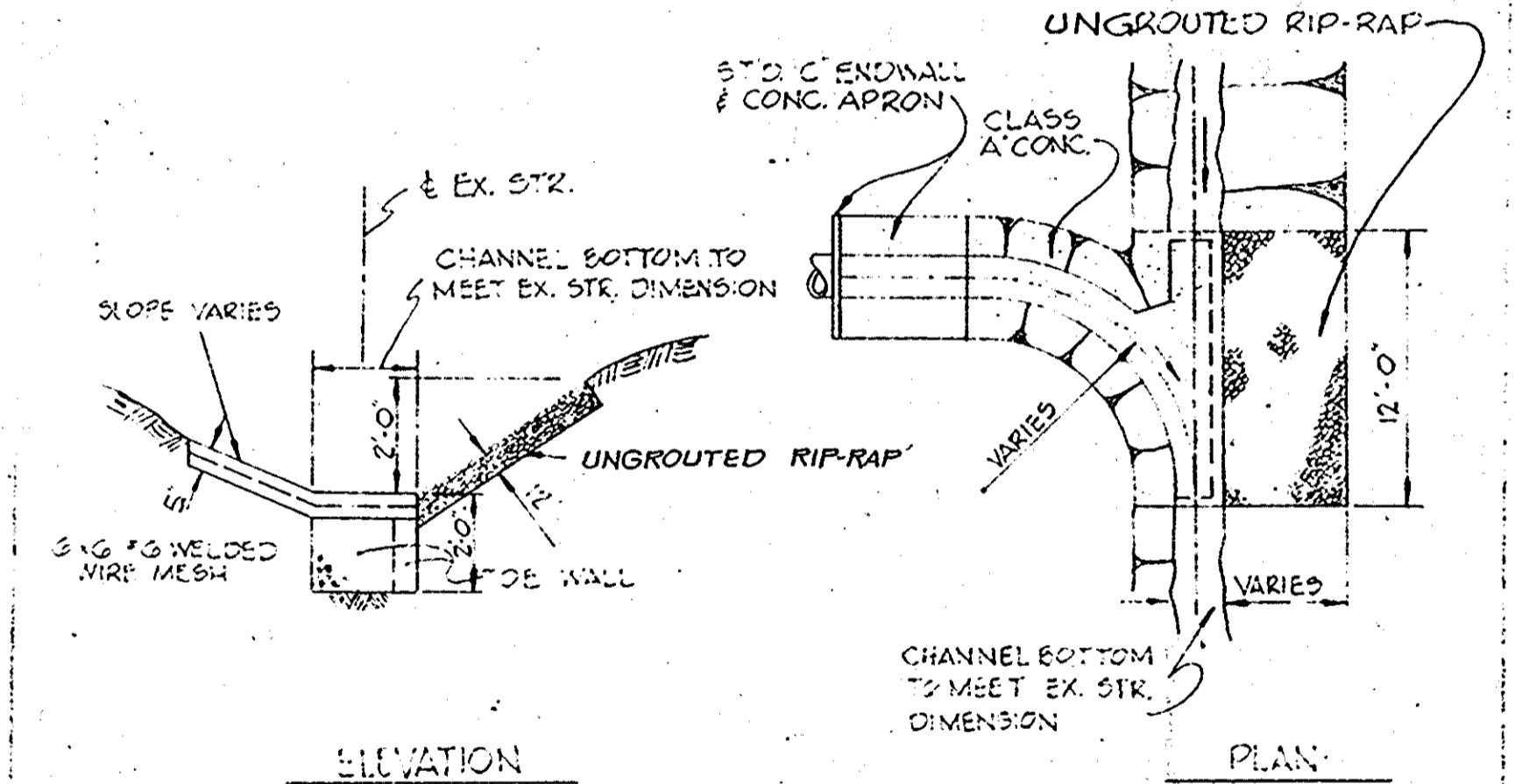
NOTES
1. Stones shall be 1 Man Stones. Normal size shall be 12"x12"x8"
2. First stone shall be placed 1'-6" minimum from end of headwall.
3. No stones are to be located within 3'-0" from end of apron.

VELOCITY CHECK DETAIL
NO SCALE



PROFILES

Scale: Vert. 1" = 5'
Horiz. 1" = 50'



DETAIL STR. STABILIZATION
NO SCALE

APPROVED: For Public Water and Public Sewerage Systems, Howard County Health Department, *5-30-73*
Palmer
County Health Officer Date

APPROVED: Howard County Office of Planning and Zoning, *5-31-73*
Thomas
Planning Director Date

APPROVED: For Public Water, Public Sewerage and Storm Drainage Systems and Roads, Howard County Dept. of Public Works, *5-25-73*
William A. Altman
Director Date

W. O. Palbert
Chief, Bureau of Highways *5-21-73*
Date

APPROVED
DIVISION OF LAND DEVELOPMENT AND TRANSPORTATION PLANNING
HOWARD COUNTY, MARYLAND
DATE *4/27/73*
JAC

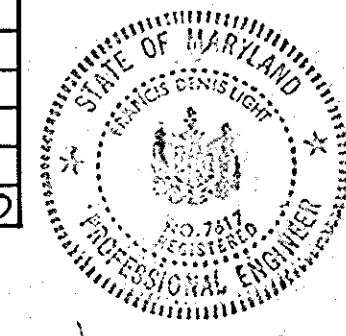
| Rev Date | Rev No | Revision Description |
|----------|--------|----------------------|
| | | |

RICHARD P. BROWNE ASSOCIATES
Columbia, Maryland

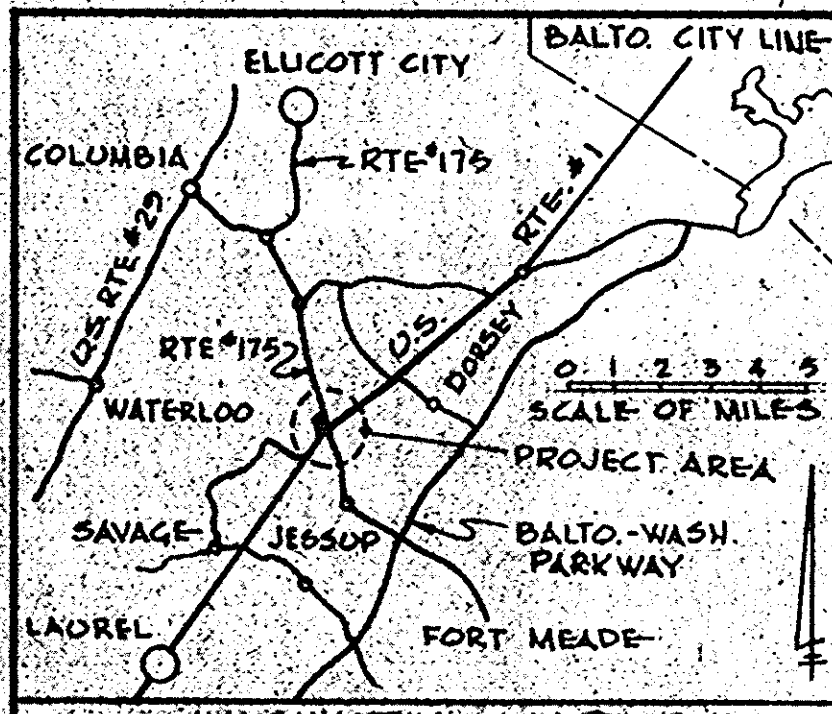
ENGINEERS PLANNERS ARCHITECTS
Wayne, New Jersey

HOLIDAY INN
STORM DRAIN PROFILES AND DETAILS
6th Election District, Howard Co., Md.
Parcel 194 Tax Map 49

| Des By | Scale as shown | Dwg No |
|--------|--------------------------|--------------|
| E.C. | | 2 of 5 |
| Drn By | Date <i>Apr 27, 1973</i> | Proj No 3314 |
| Chk By | Approved | |



F. Denis Light
F. DENIS LIGHT Reg. No. 7617 DATE *4/27/73*



Note: Final grading shall be in accordance with site plan. See sheet 1 of 5. As each phase of development is being constructed the remaining phases shall remain graded as shown on this plan. Phases are numbered for reference only and are not intended to influence construction methods.

SEDIMENT & SOIL EROSION CONTROL NOTES

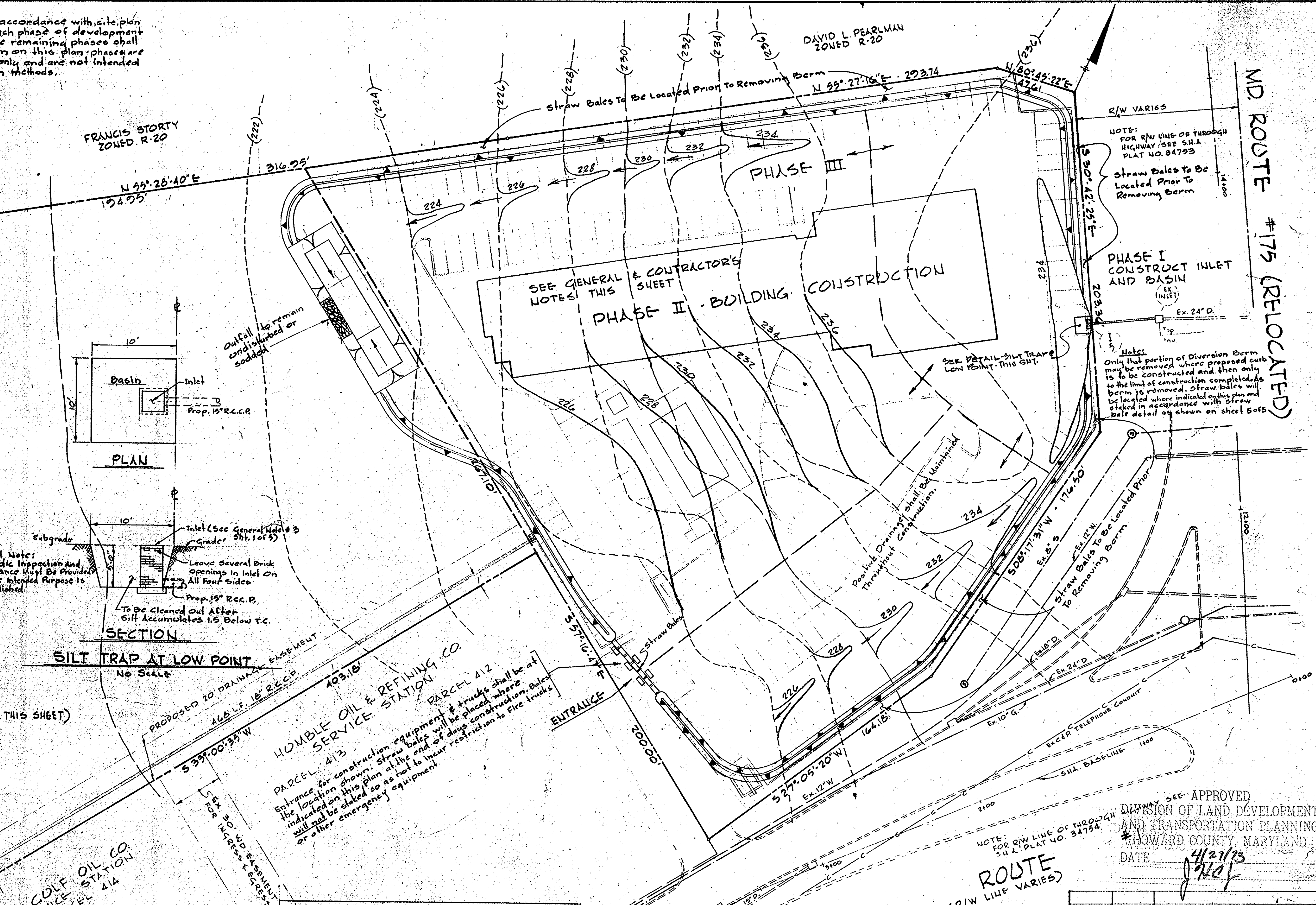
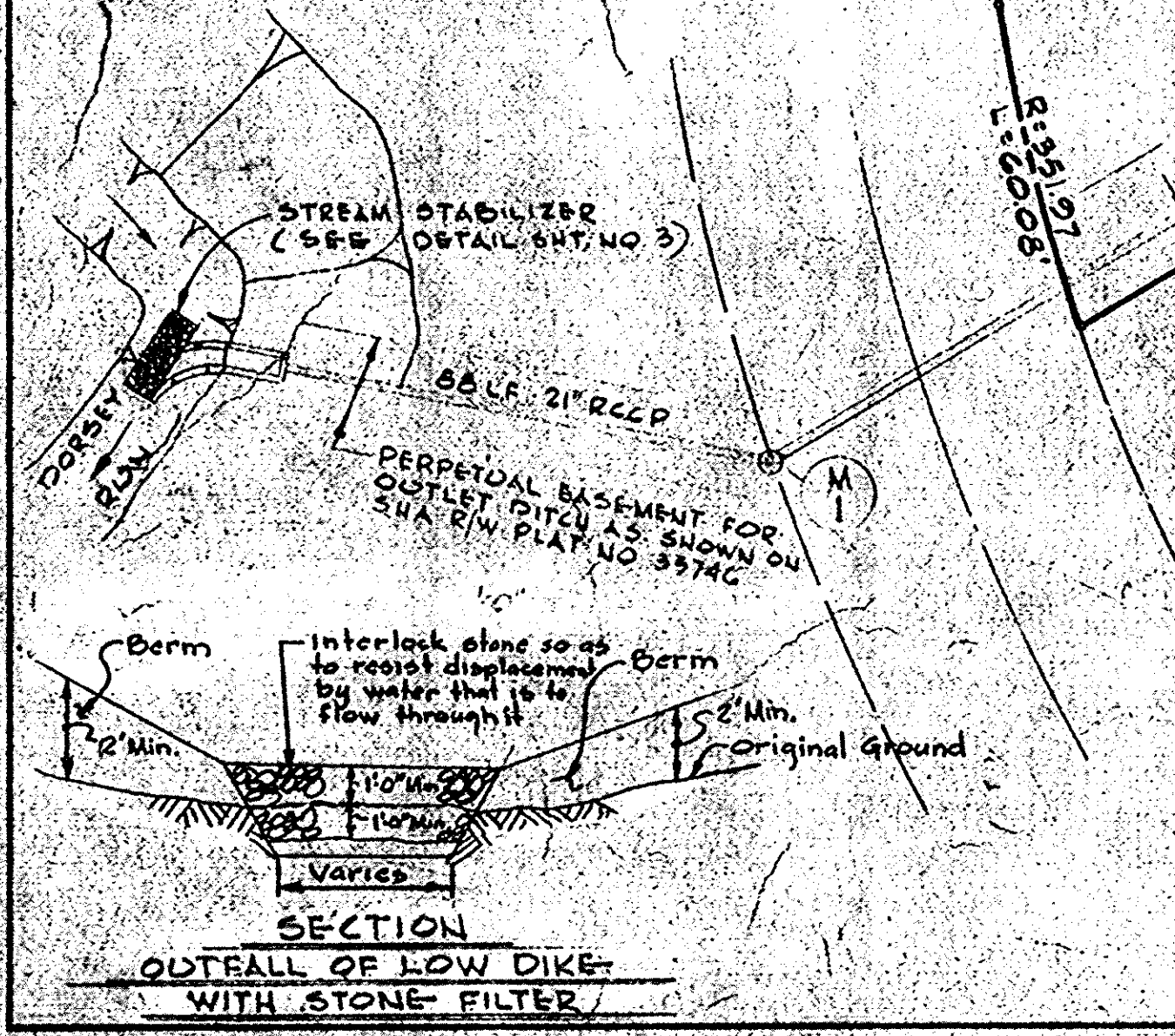
- All sediment control measures to be adjusted to meet field conditions at time of construction and be constructed prior to any grading or disturbance of existing surface material.
- All sediment measures shall be undertaken in strict accordance with the approved plans and the criteria and specifications approved by the Howard County Soils Conservation District.
- All grading on sediment control facilities to be done in accordance with the Howard County Soils Conservation District.
- Periodic inspection and maintenance of all sediment control structures must be provided to insure the intended purpose is accomplished.
- Contractor installing the above shall obtain and follow the standards and specifications for soil erosion in urbanizing areas as distributed by the Howard County Soils Conservation District.
- All sediment control measures are to remain in place until permission for their removal has been obtained from the Howard County Soils Conservation District.
- Notify the Howard County Soils Conservation District of site prior to starting any work.
- On site inspection and maintenance of all sediment control measures, including cleanup of all sediment traps and berms, and proper establishment of all vegetation measures will be the responsibility of the Contractor or his representative on the site on a continuing day to day basis.

GENERAL NOTES

- Diversion Terraces (or Furrows) will be utilized to reduce slope lengths where possible, during land grading operations.
- Permanent vegetation will be established as rapidly as possible on all exposed faces of cuts and fills, and other areas, following grading operations.
- Temporary vegetation will be applied upon completion of rough grading on all other disturbed areas where such areas will not be built on within a period of ninety (90) days.
- Storm sewer inlets located below high silt producing areas will be protected by the use of adequate silt traps during construction.

CONTRACTOR'S NOTES (SEE LOW DIKE DETAIL THIS SHEET)

- Stone is to be "keyed" 1" into original ground.
- Stone is to be of irregular shape with min. wt. of 50.
- Provide vegetated outfall, either natural or sodded.
- Cleanout when silt reaches 6" below original grade.
- All construction shall be done in accordance with the Howard County Soils Conservation District.



APPROVED: For Public Water and Public Sewerage Systems, Howard County Health Department
Robert F. Wine
 County Health Officer
 Date: 5-27-73

APPROVED: Howard County Office of Planning and Zoning
Thomas S. Harris Jr.
 Planning Director
 Date: 5/30/73

APPROVED: For Public Water, Public Sewerage and Storm Drainage Systems and Road & Public Works
 Howard County Dept. of Public Works
William A. Altman
 Director
 Date: 5/25-73

APPROVED: Chief, Bureau of Highways
W. O. P. [unclear]
 Date: 5-25-73

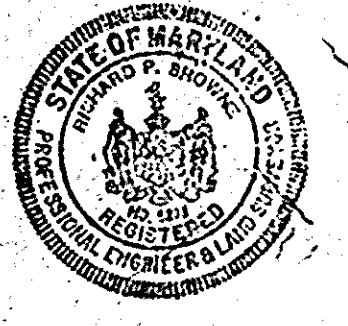
Certification By Registered Land Surveyor:
 I hereby certify that the plan of development & the plan of silt & erosion control requirements, standards & specializations of the Howard County Soils Conservation District.
Richard P. Browne
 No. 5238
 Date: April 27, 1973

Certification By The Developer:
 I hereby certify that all development and/or construction will be done according to this plan of Development & plan of silt & sediment control.
James [unclear]
 Date: 4/27/73

Howard Soil Conservation District:
 This Development Plan is approved for soil erosion & sediment control by the Howard Soil Conservation District.
Charles E. [unclear]
 Date: 5/10/73

Reviewed by District Conservationist
Robert [unclear]
 Date: 5/28/73

Approved by District Conservationist
Howard Soil Conservation Dist.
 Date: [unclear]



F. Denis Light
 F. DENIS LIGHT PE. NO. 7617
 DATE: 4/27/73

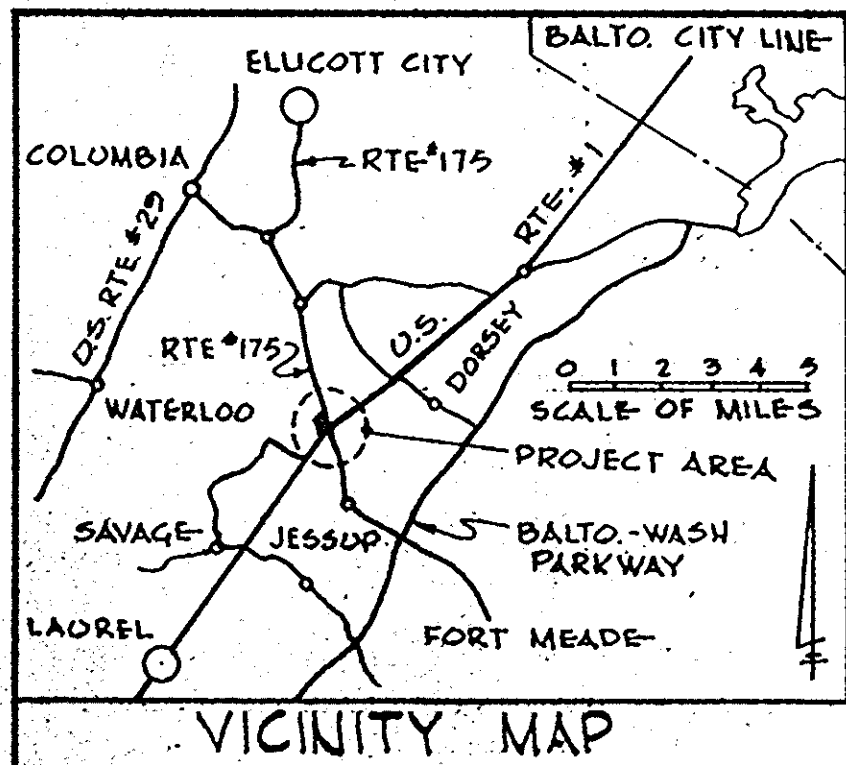
DEPARTMENT OF LAND DEVELOPMENT AND TRANSPORTATION PLANNING
 HOWARD COUNTY, MARYLAND
 DATE: 4/27/73
 J. [unclear]

| Rev. Date | Rev. No. | Revision Description |
|-----------|----------|----------------------|
| | | |

RICHARD P. BROWNE ASSOCIATES
 ENGINEERS SURVEYORS PLANNERS ARCHITECTS
 PEACHTREE CITY, GEORGIA
 COLUMBIA, MD. WAYNE, N. J.

SEDIMENT CONTROL MAP
 HOLIDAY INN
 6th Election District, Howard Co., Md.
 Parcel 134 Tax Map 43

Des. By E.C. Scale 1" = 30' Dwg. No. 5 of 5
 Dwn. By J.J.B. Date APR. 27, 1973 Prof. No. 3314
 Chk. By F.D.L. Approved

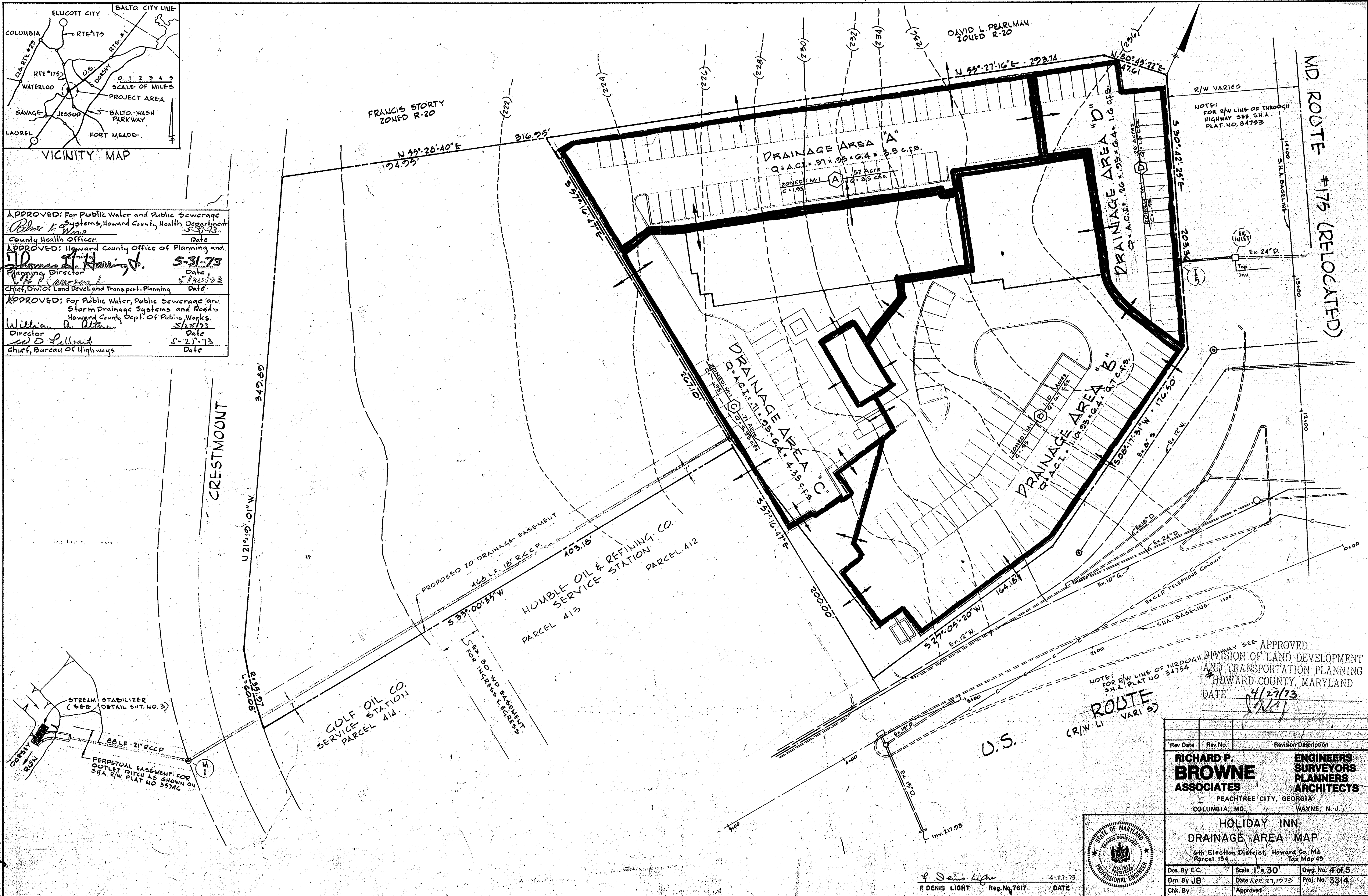


APPROVED: For Public Water and Public Sewerage Systems, Howard County Health Department
Robert F. Wiese 5-30-73
 County Health Officer Date

APPROVED: Howard County Office of Planning and
Thomas J. Haring 5-31-73
 Planning Director Date

APPROVED: For Public Water, Public Sewerage and Storm Drainage Systems and Roads
 Howard County Dept. of Public Works
William A. Altman 5/25/73
 Director Date

D. J. Pellmar 5-25-73
 Chief, Bureau of Highways Date



APPROVED
 DIVISION OF LAND DEVELOPMENT
 AND TRANSPORTATION PLANNING
 HOWARD COUNTY, MARYLAND
 DATE 4/27/73
[Signature]

| Rev. Date | Rev. No. | Revision Description |
|-----------|----------|----------------------|
| | | |

RICHARD P. BROWNE ASSOCIATES
 ENGINEERS SURVEYORS PLANNERS ARCHITECTS
 PEACHTREE CITY, GEORGIA
 COLUMBIA, MD. WAYNE, N. J.



HOLIDAY INN DRAINAGE AREA MAP
 6th Election District, Howard Co., Md.
 Parcel 154

| | | |
|--------------|--------------------|-----------------|
| Des. By E.C. | Scale 1" = 30' | Dwg. No. 4 of 5 |
| Drn. By J.B. | Date APR. 27, 1973 | Proj. No. 3314 |
| Chk. By | Approved: | |

F. Denis Light
 F DENIS LIGHT Reg. No. 7817 DATE

SDP 72-16

| | |
|--|----------------------|
| BITUMINOUS CONCRETE SURFACE | BAND C-3 FINAL PHASE |
| BITUMINOUS CONCRETE BASE PLACED IN ONE COURSE | BAND C-2 FIRST PHASE |

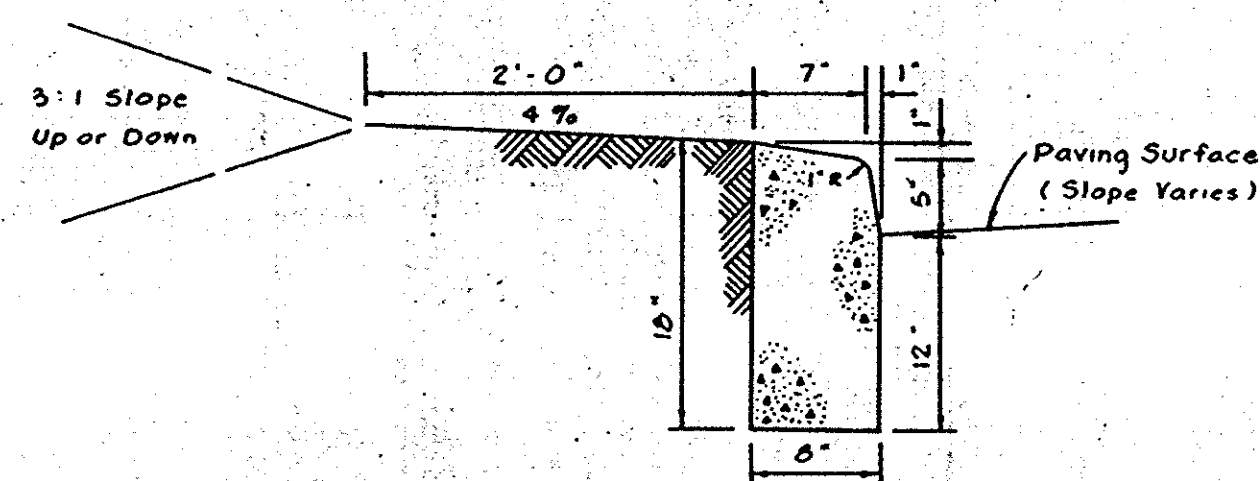
DRIVEWAYS AND PARKING AREAS

CLEARING AND GRADING
SUBGRADE
BASE COURSE
SURFACE COURSE

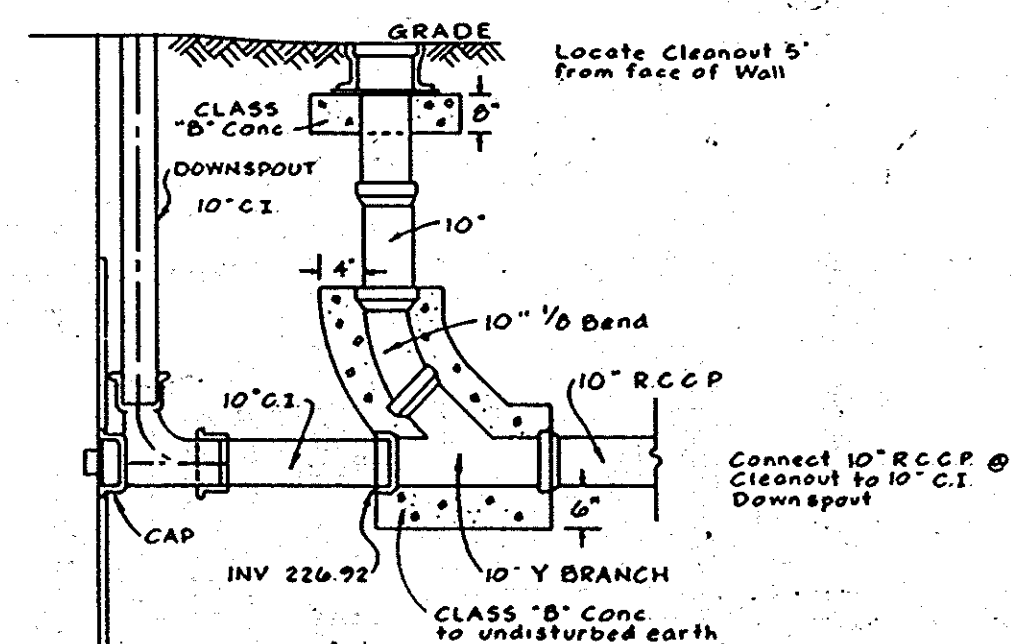
ARTICLE C-1
ARTICLE C-2
ARTICLE C-3
ARTICLE C-31

NOTE:
FILL MATERIAL IN ALL DRIVEWAYS AND PARKING AREAS BELOW THE TOP 1 FOOT OF SUBGRADE SHALL BE COMPACTED TO NOT LESS THAN 92% OF THE MAXIMUM DENSITY. FILL MATERIAL IN THE TOP 1 FOOT OF SUBGRADE SHALL BE COMPACTED TO NOT LESS THAN 95% OF THE MAXIMUM DENSITY. CONSTRUCTION METHODS SHALL ADHERE TO THE HOWARD COUNTY ROAD CONSTRUCTION CODE STANDARD SPECIFICATION DIVISION "C".

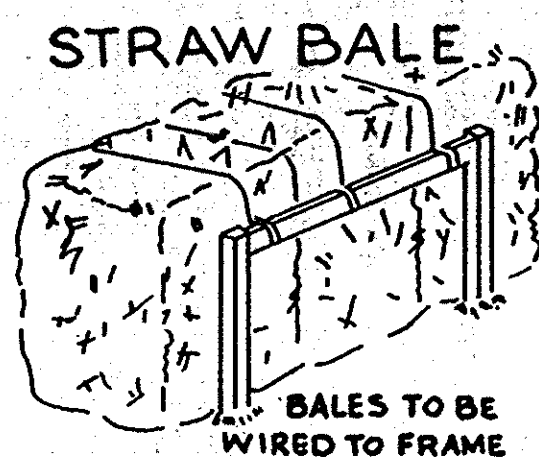
6" PAVEMENT DETAIL
NO SCALE



CURB DETAIL
No Scale



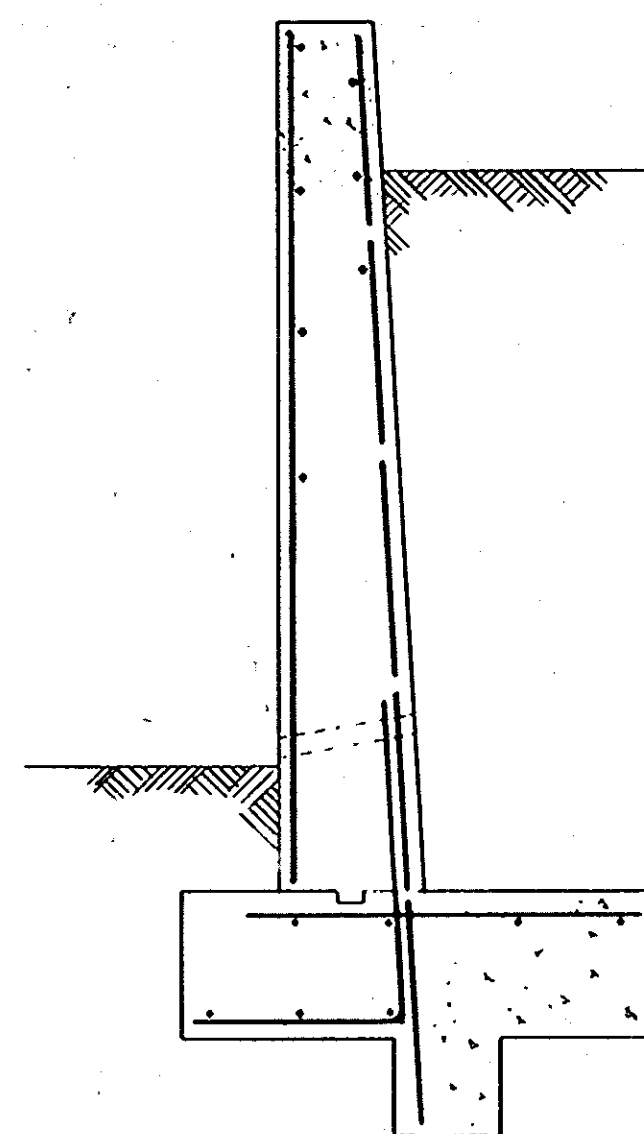
SECTION SHOWING STORM DRAIN CONNECTION TO ROOF DRAIN DOWNSPOUT
NO SCALE



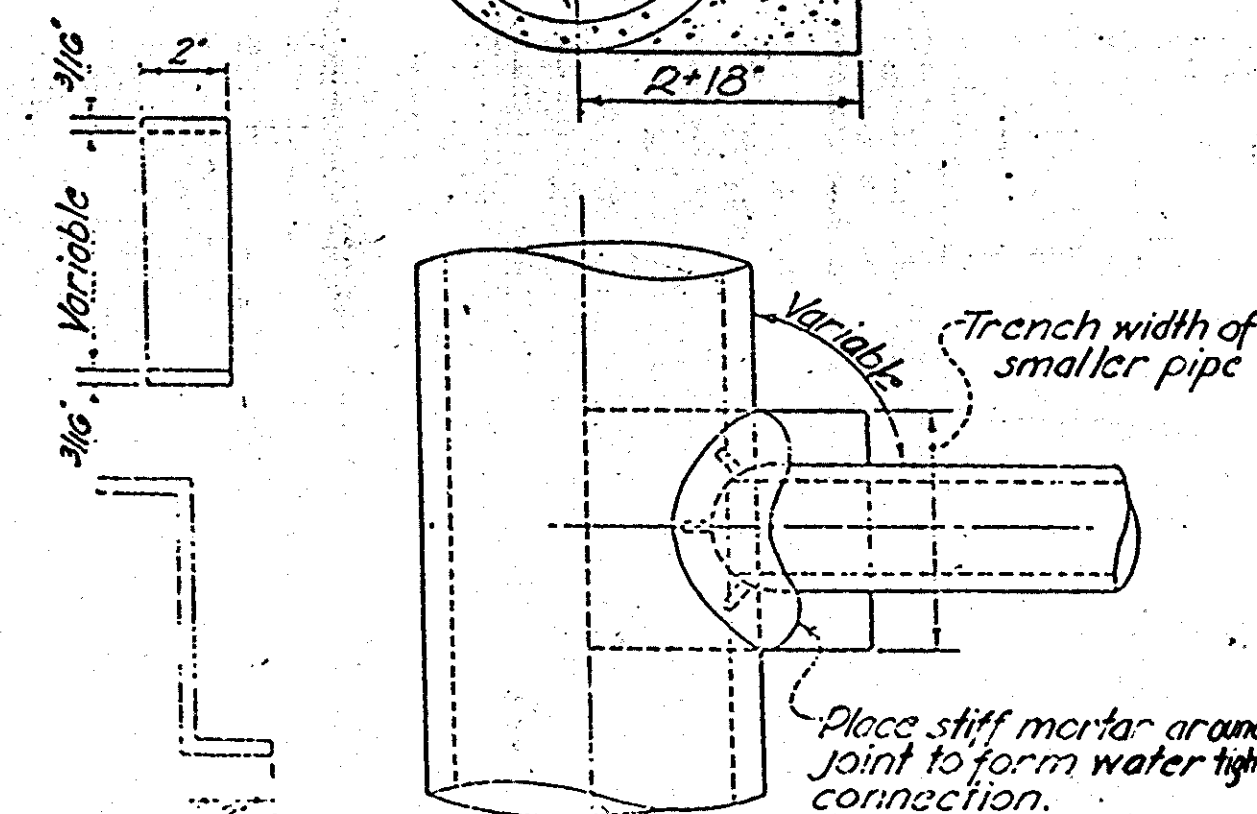
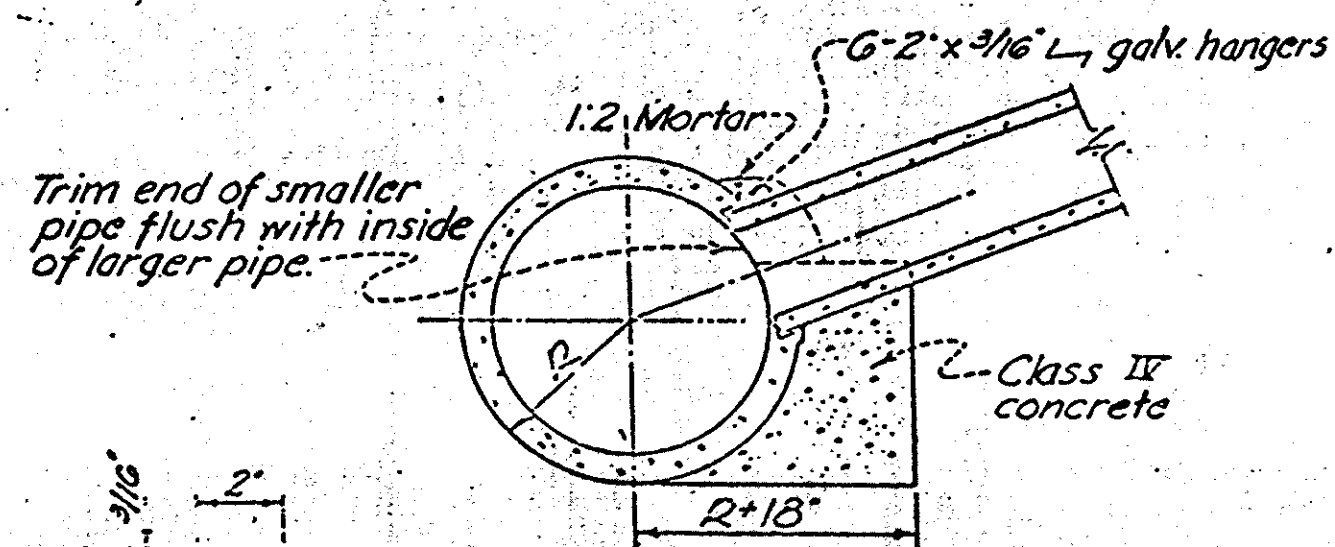
STRAW BALE
BALES TO BE WIRED TO FRAME

DETAILS
METHOD OF ANCHORING STRAW BALES TO CONTROL EROSION & SILTATION DURING CONSTRUCTION.

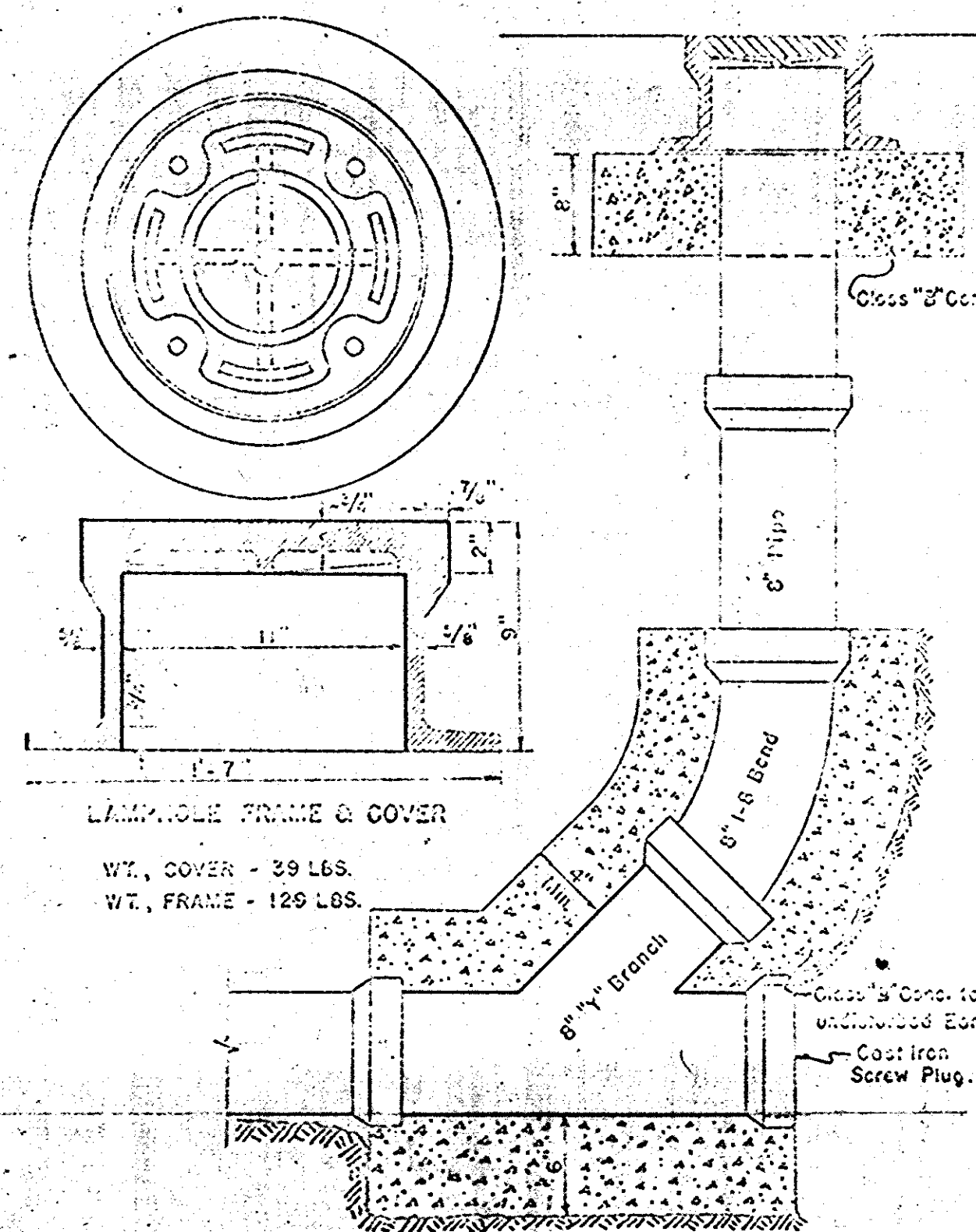
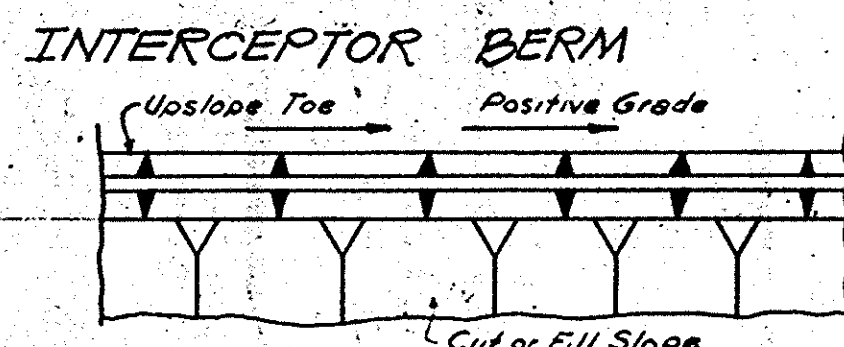
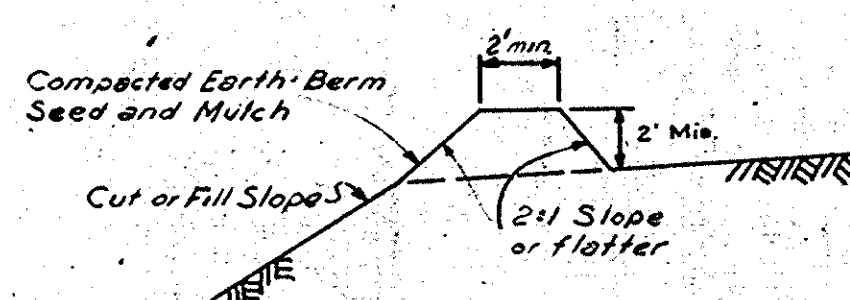
2 x 2 minimum posts 4' o.c. 18" above grade and minimum 12" in ground; 1 x 4" minimum cross-pieces nailed to post.
Alternatives: metal angle or channel fence posts with cross-piece wired; or 2" minimum diameter round posts (or rebar)



TYPICAL SECTION RETAINING WALL
NO SCALE



PIPE HANGER FIELD CONNECTION



MAIN LINE CLEANOUT
W.T. COVER - 39 LBS.
W.T. FRAME - 129 LBS.

Note: All material to be Cast Iron Soil Pipe.

APPROVED
DIVISION OF LAND DEVELOPMENT
AND TRANSPORTATION PLANNING
HOWARD COUNTY, MARYLAND
DATE 4/27/73

APPROVED: For Public Water and Public Sewerage Systems, Howard County Health Department
Date 5-30-73
County Health Officer

APPROVED: Howard County Office of Planning and Zoning
Date 5-31-73
Planning Director

APPROVED: For Public Water, Public Sewerage and Storm Drainage Systems and Roads, Howard County Dept. of Public Works
Date 5-25-73
Director

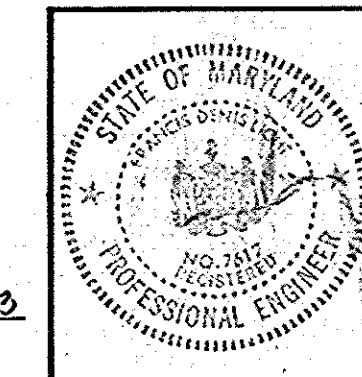
Chief, Bureau of Highways

| Rev Date | Rev No. | Revision Description |
|----------|---------|----------------------|
| | | |
| | | |

RICHARD P. BROWNE ASSOCIATES
ENGINEERS SURVEYORS PLANNERS ARCHITECTS
PEACHTREE CITY, GEORGIA
COLUMBIA, MD. WAYNE, N. J.

HOLIDAY INN SECTIONS & DETAILS
6th Election District, Howard Co., Md.
Parcel 194 Tax Map 43

| | | |
|-----------------|--------------------|-----------------|
| Des. By E.C. | Scale AS SHOWN | Dwg. No. 5 of 5 |
| Drn. By J.B. MK | Date Apr. 27, 1973 | Proj. No. 3314 |
| Chk. By | Approved | |



F. Denis Light
F DENIS LIGHT Reg. No. 7617 DATE 4/27/73