

VICINITY MAP
1"=2000'

SITE ANALYSIS

- 1) AREA OF PARCEL = 39,822 SQ. FT ±
 - 2) PRESENT ZONING = B-2
 - 3) TOTAL NUMBER OF EMPLOYEES = 3
 - 4) TOTAL FLOOR SPACE OF BUILDING = 2,018 SQ. FT.
 - 5) TOTAL FLOOR SPACE OF SALES AREA = 341 SQ. FT.
- TAX MAP - 24 - PART OF PARCEL 976
ELECTION DISTRICT NO. 2 HOWARD CO.
RECORDED IN PLATBOOK 10/94

OWNER OF PROPERTY & APPLICANT:
BP OIL CORPORATION
401 FREDERICK ST. N.E.
WASHINGTON, D.C. 20011

ARCHITECT:
C.T. BANDEL, A.I.A.
APT. 513 HAMPTON HOUSE, TOWSON, MD.

COUNSEL (ATTORNEY):
BERNARD F. GOLDBERG
8370 COURT AVE.
ELLCOTT CITY, MD.

STREET CURBING NOTE

ALL CURBING OF ISLANDS ADJACENT TO STREETS AND WITHIN PROPOSED R/W ARE TO BE TYPE 'A' CONCRETE PER STATE SPECIFICATIONS. FRONT CURBS TO BE TYPE 'A' CURB & GUTTER, REAR & RADIUS TO BE TYPE 'A' 2' x 22'.

BITUMINOUS ROAD SHOULDER PAVING STATE SPECIFICATIONS

12" COMPACTED - PLANT MIX STABILIZED STONE AGGREGATE (3" - 4" COURSE) PLUS 2 1/2" COMPACTED MD SPEC. #2 BITUMINOUS CONCRETE (2" BASE - 1/2" SURFACE)

OR

9" COMPACTED MD SPEC. #2 BITUMINOUS CONCRETE PLACED IN 2" - 3" COURSES
2" BASE - 3" SURFACE

OR

8" STATE ROADS COMMISSION CLASS #1 CONCRETE

NOTE "A"

BITUMINOUS TO BE 7" COMPACTED MARYLAND SPEC. #2 BITUMINOUS CONCRETE 2" BASE 1/2" SURFACE

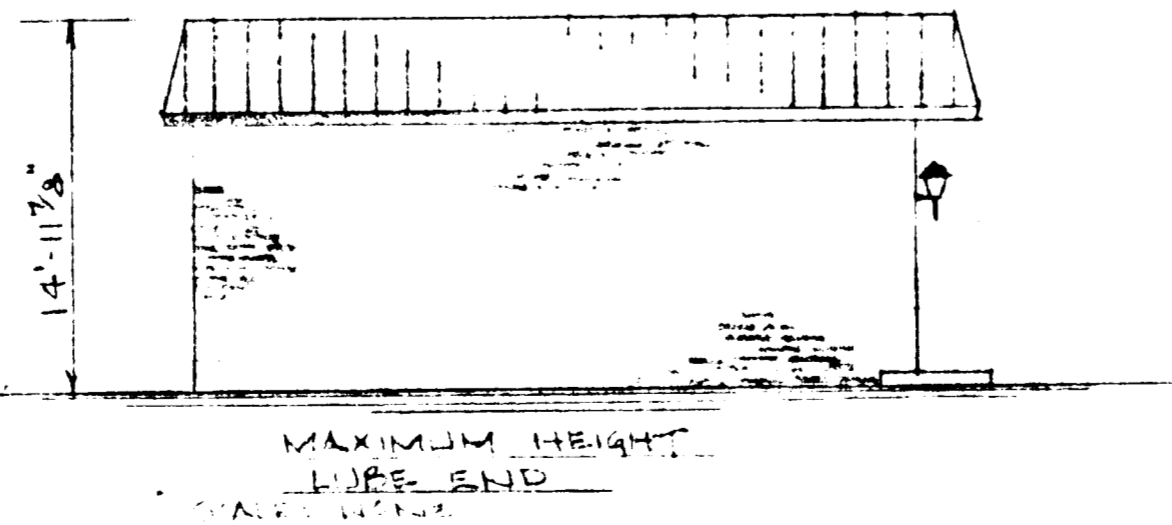
FILE NUMBER: SDP 71-01

PERMS, SEDIMENT TRAPS, ETC., TO BE CONSTRUCTED PRIOR TO ANY ON-SITE GRADING OR DISTURBANCE OF EXISTING SURFACE MATERIAL.

ALL SEDIMENT CONTROL STRUCTURES TO REMAIN IN PLACE UNTIL PERMISSION FOR THEIR REMOVAL HAS BEEN OBTAINED FROM THE HOWARD SOIL CONSERVATION DISTRICT - 465-3140

MINIMUM 24 HOUR NOTICE MUST BE GIVEN TO THE HOWARD SOIL CONSERVATION DISTRICT - 465-3140 PRIOR TO STARTING ANY WORK.

CONSTRUCTION ENGINEERING SUPERVISOR:
J. E. BUTER



		DISTRICT OPER. NO.		DATE
		DISTRICT NO.		DATE
REVISIONS		SITE DEVELOPMENT PLAN		
NO.	DATE	NATURE	APPROV.	1101 HULL NE 40th FREDERICK (WASHINGTON) - ELLCOTT CITY, MD
1	6/17/71	GENERAL	TS	BP OIL CORPORATION WASHINGTON DISTRICT OPERATIONS DEPARTMENT
		DATE	SCALE	DRW. NO.
		1-24-71	1"=20'-0"	71-01
				WASH