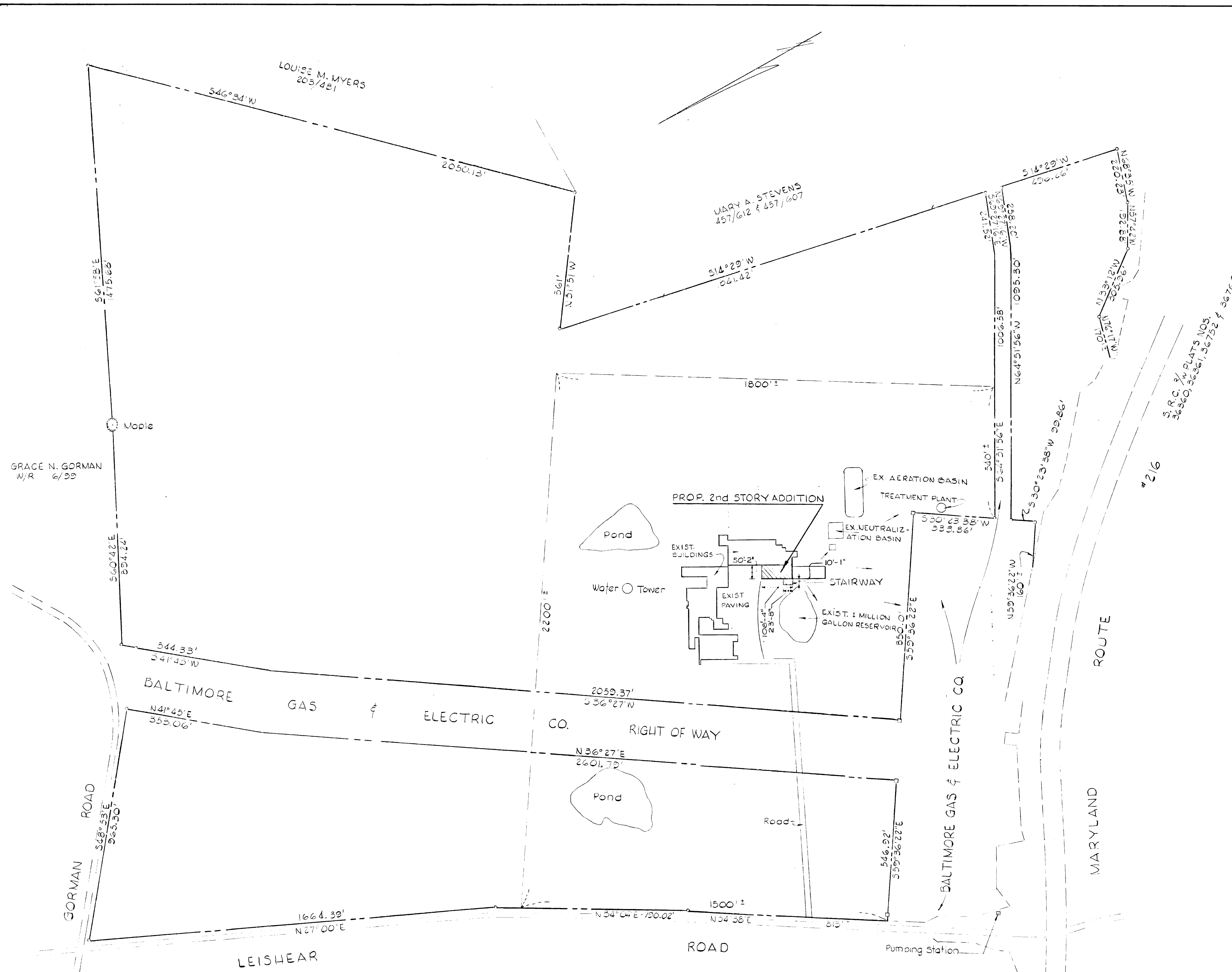


LOCATION MAP
Scale: 1"=2640' (1/2 Mi.)



GENERAL NOTES

1. Tax Maps Nos. 46 & 47 Parcel #2
2. Total Area of Tract: 225.65 Ac.
3. Zoned M-R
4. Proposed 2nd story Addition.
Use: Installation and use of new milk drying facilities.
Number of Employees - No Additional Permanent Employees to be Engaged.
No Public Water & Sewer Facilities.
Maximum Height: Ex. Warehouse 16'-6"
Prop. Addition 29'-4"
Total = 45'-10"
Type of Construction - Concrete Block & Brick Wall with Glazed Tile on interior of walls except stairway.
5. ——— Indicates direction of surface drainage

OWNER & DEVELOPER
MD & VA. MILK PRODUCTS INCORPORATED
LEISHEAR ROAD
HOWARD COUNTY, MARYLAND

FILE NO SJP 7139

APPROVED
PLANNING BOARD
OF HOWARD COUNTY
DATE DEC 16 1970
Thomas A. Harris

Approved - HOWARD COUNTY OFFICE OF PLANNING AND ZONING
Thomas A. Harris 1-5-71
Planning Director
J.H. Clous 1-1-71
Chief Engineer, Division of Land Development

Approved - HOWARD COUNTY HEALTH DEPT.
Levithon 12/28/70
County Health Officer

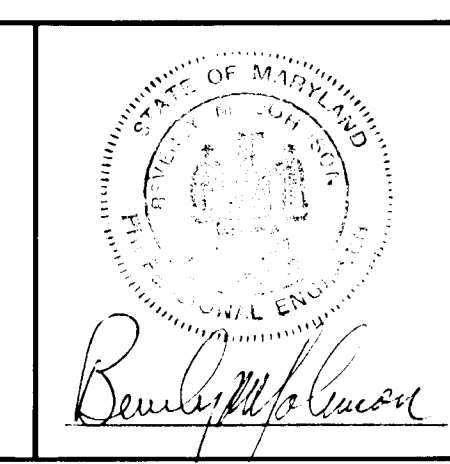
Approved FOR
HOWARD COUNTY DEPT. OF PUBLIC WORKS
Norman S. O'Neill 12/23/70
Director

STORM DRAIN SYSTEMS AND ROADS
HOWARD COUNTY DEPT. OF PUBLIC WORKS
N. McKeane 12/18/70
Chief - Bureau of Highways

COCHRAN, STEPHENSON
& DONKEROET Incorporated
ARCHITECTS
925 N. Charles St., Balto. Md.

VAN KENSSELAER & SAXE
CONSULTING ENGINEER
1701 ST. PAUL ST.
BALTIMORE, MARYLAND

PURDUM & JESCHKE
CONSULTING ENGINEERS
AND LAND SURVEYORS
1023 N. CALVERT STREET
BALTIMORE, MARYLAND



MD. & VA. MILK PRODUCERS ASSOCIATION
6TH ELECTION DISTRICT, HOWARD COUNTY, MD.
Nov. 20, 1970 SCALE 1"=200'

SITE PLAN
2ND STORY ADDITION TO EX. WAREHOUSE