

PLAN
1/8"=1'-0"

ELEVATIONS SHOWN THAT 492.25 ARE TO TOP OF WALKWAY SLAB.

**PEDESTRIAN BRIDGE
AT VILLAGE OF HARPER'S CHOICE
COLUMBIA, MARYLAND**

BELTWAY CONSTRUCTION CO., INC.
4701 SEMINARY RD.
ALEXANDRIA, VIRGINIA

ALVIN W. DUNBAR
CONSULTING STRUCTURAL ENGINEERS
107 E. CARY ST., RICHMOND, VA.

MAY 7, 1970 SHEET 1

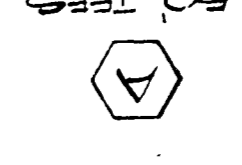
APPROVED
DATE 5-6-70

V.I.C.
 FEDERAL BRIDGE
 COLUMBIA, MARYLAND
 BELTWAY CONSTRUCTION CO., INC.
 4101 SEMINARY RD.
 ALEXANDRIA, VIRGINIA
 ALVIN W. DUNN
 CONSULTING STRUCTURAL ENGINEER
 107 E. CARY ST., RICHMOND, VA.
 MAY 7, 1970 SHEET 1/3

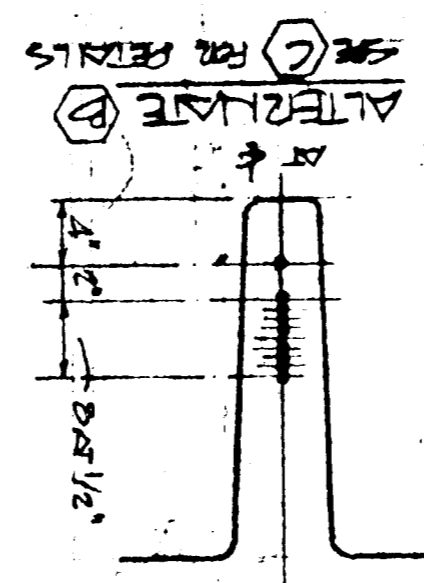
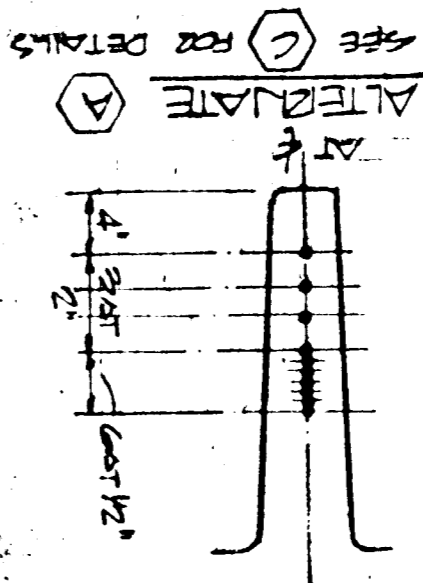
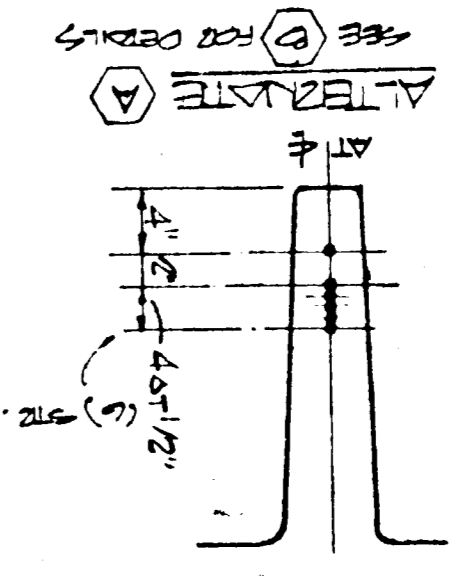
7-5-70

PANEL MARK

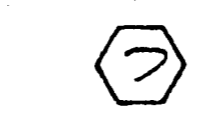
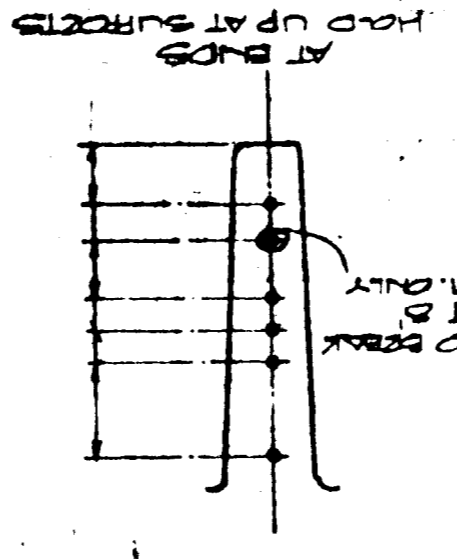
NUMBER OF 1/2" LOW STRESS STRAND BARS
 INITIAL STRAND TENSION
 RELEASE STRENGTH / 28 DAY STRENGTH
 HOLD DOWNS
 CAMBER AT TIME OF ERECTION



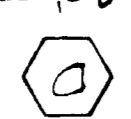
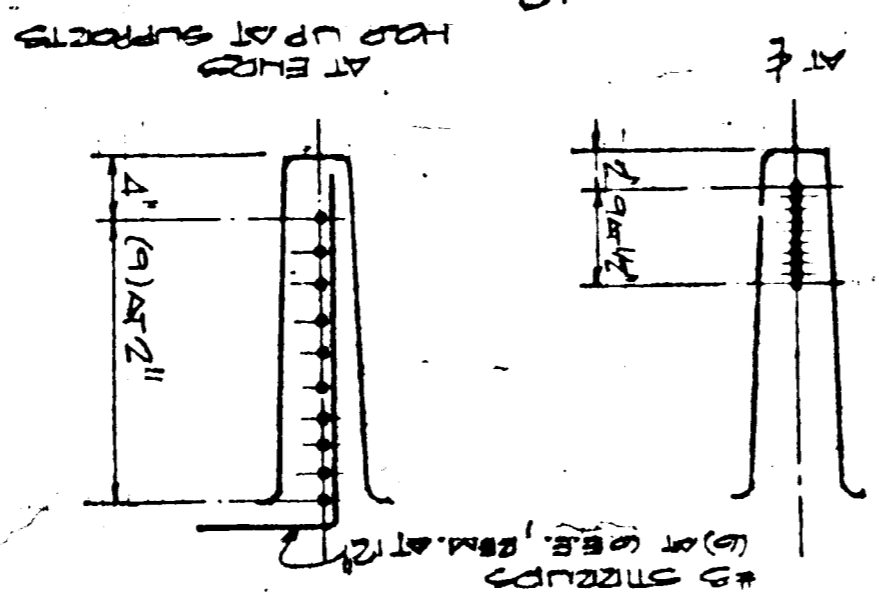
RD TEES
 19,400
 1000/5000
 (1) AT $\frac{1}{2}$ "



29,040
 5000/5500
 (1) AT $\frac{1}{2}$ " AND PAIR
 (2) 5.0" SPACING OF SB PAIR
 2 1/4"

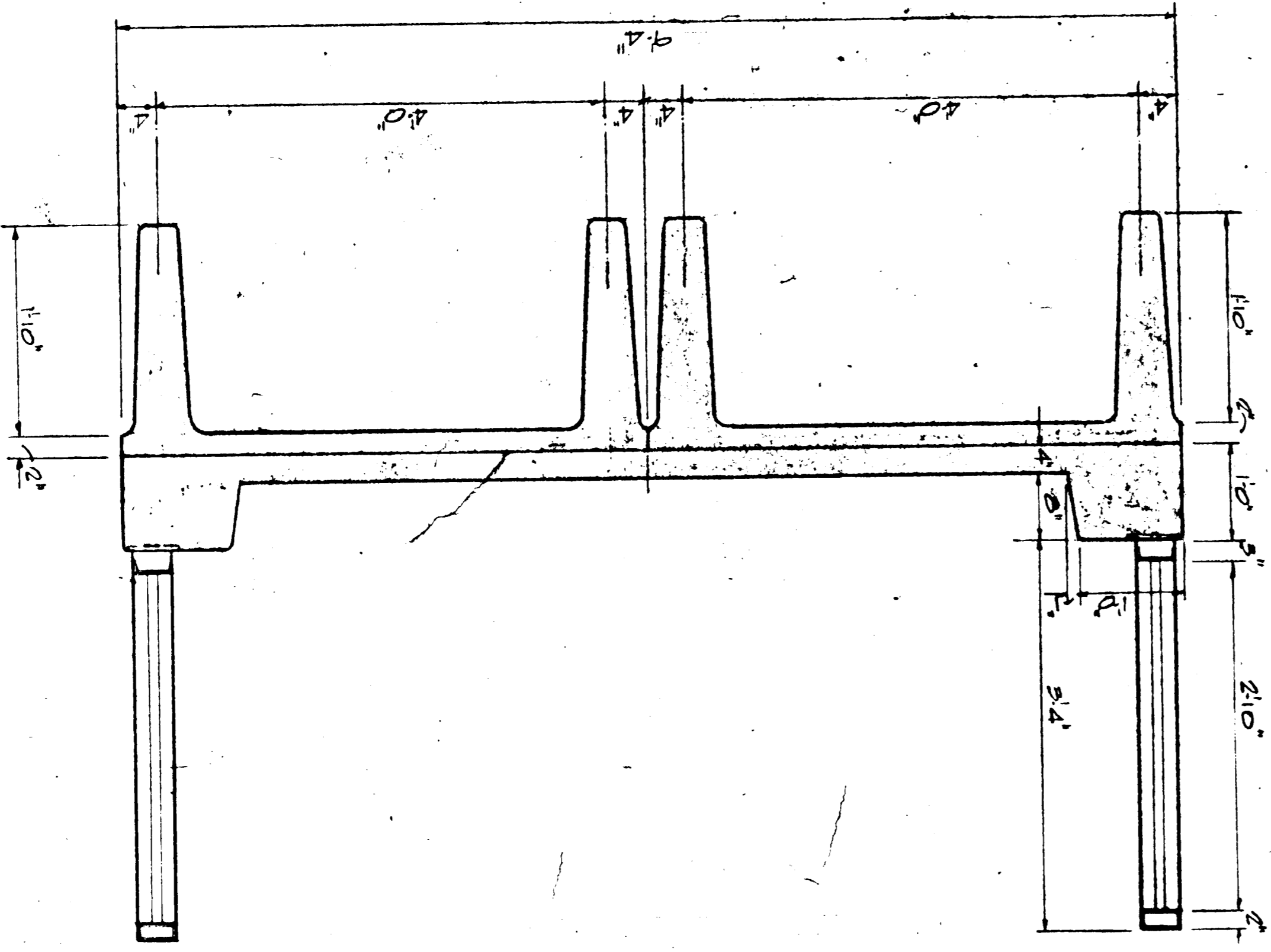
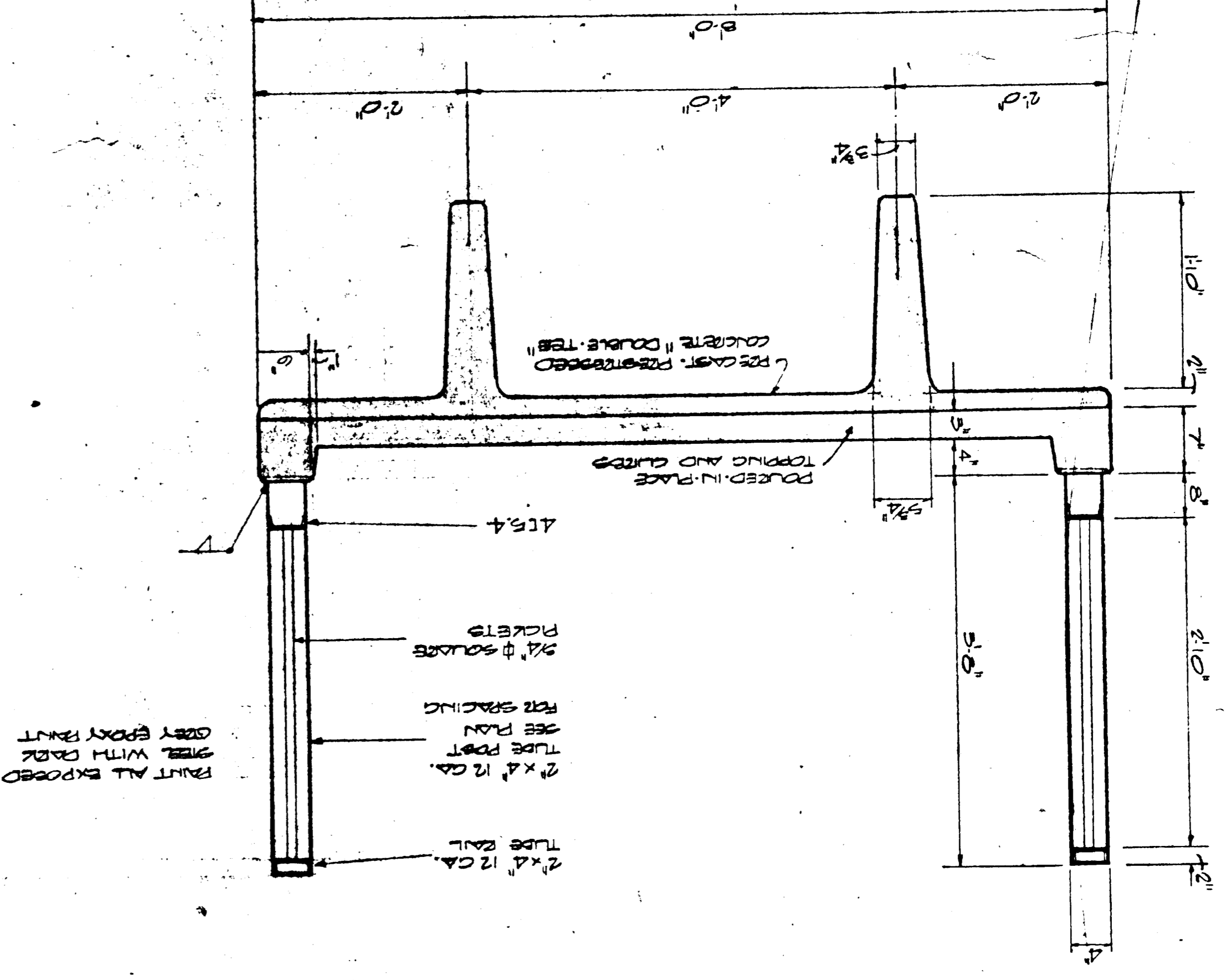


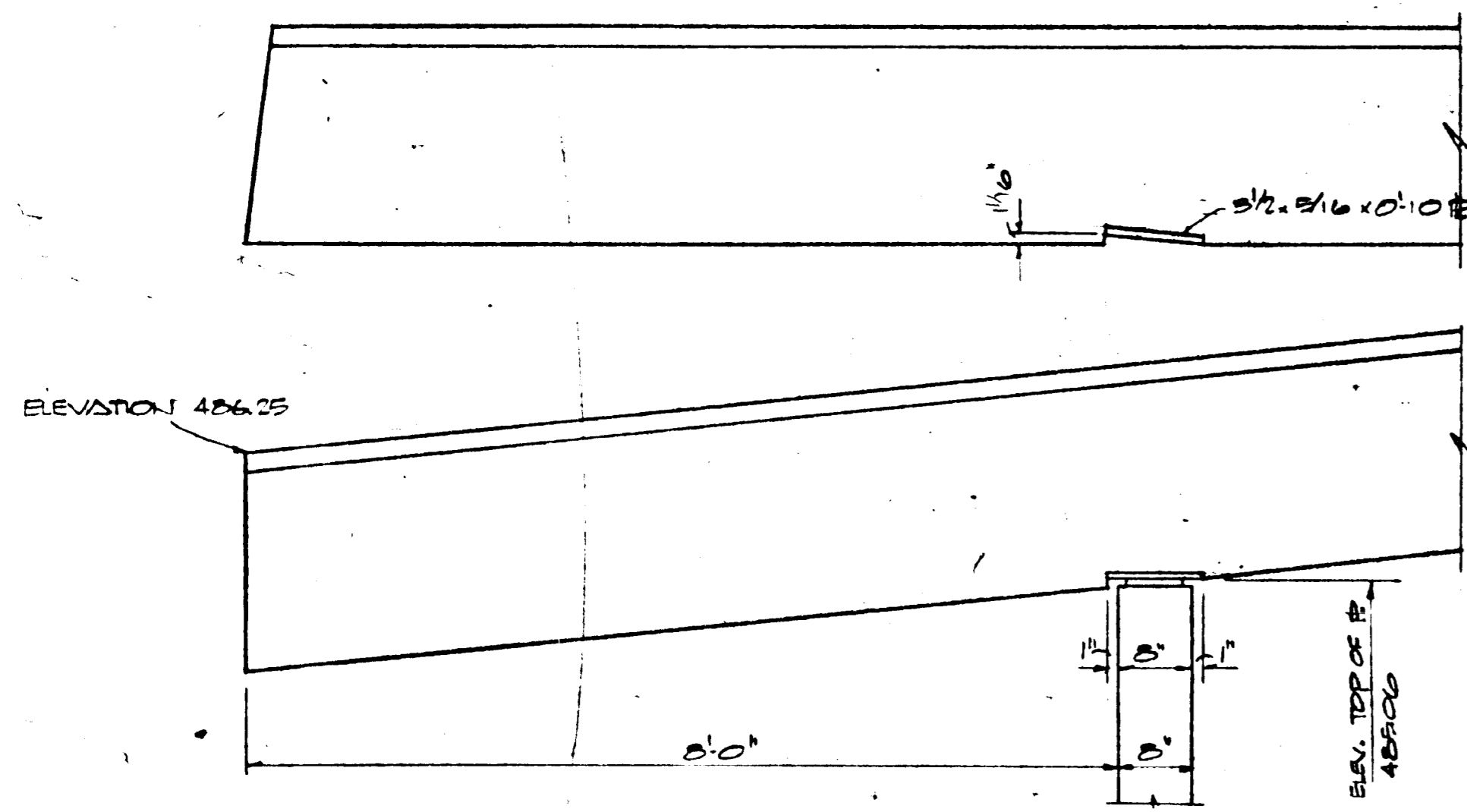
24,200
 5000/5500
 (2) 2.0" O.B.A. SPACING OF $\frac{1}{2}$ "



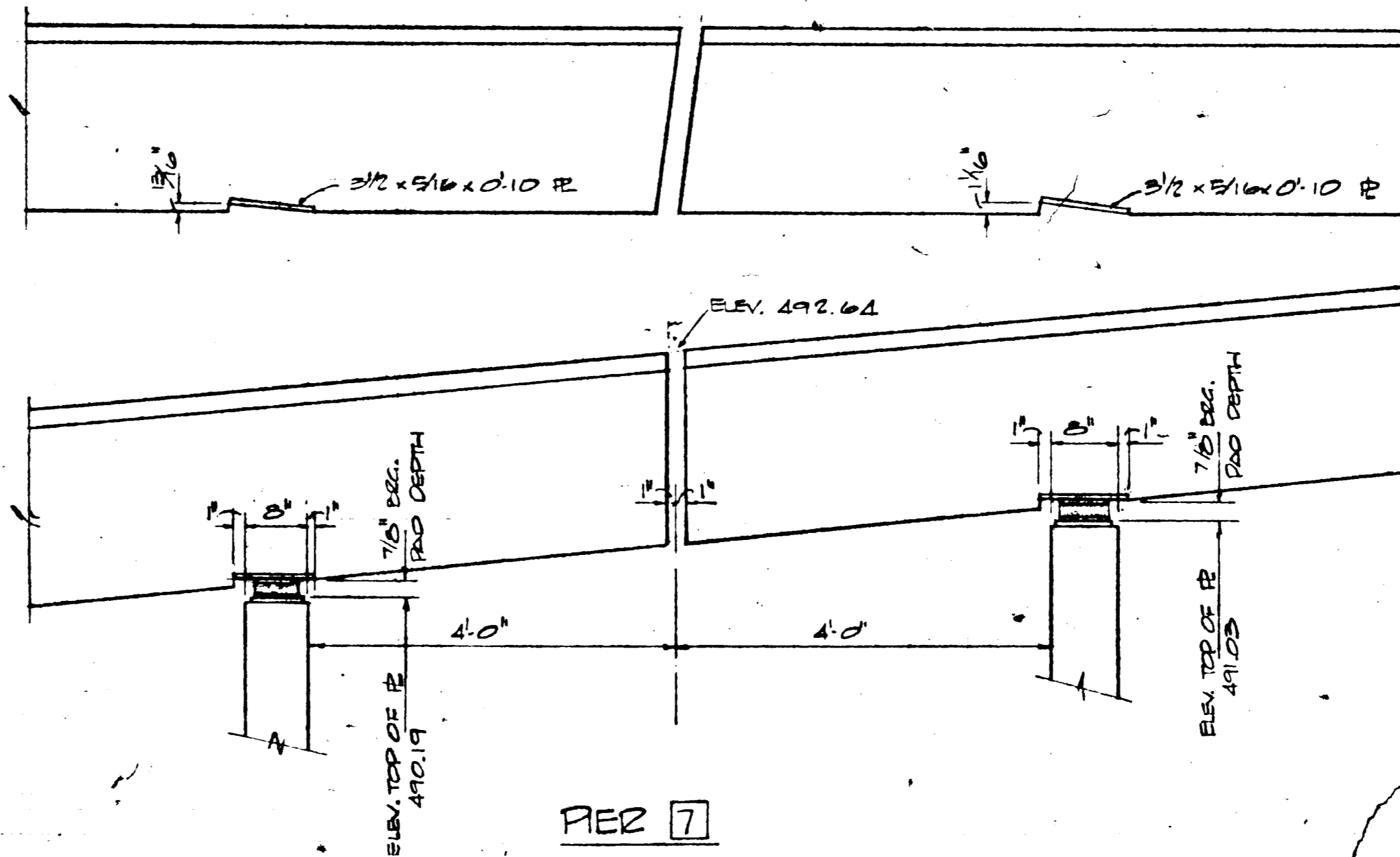
USE (B) OR (C) PARALLEL

TYPICAL BRIDGE CROSS-SECTIONS

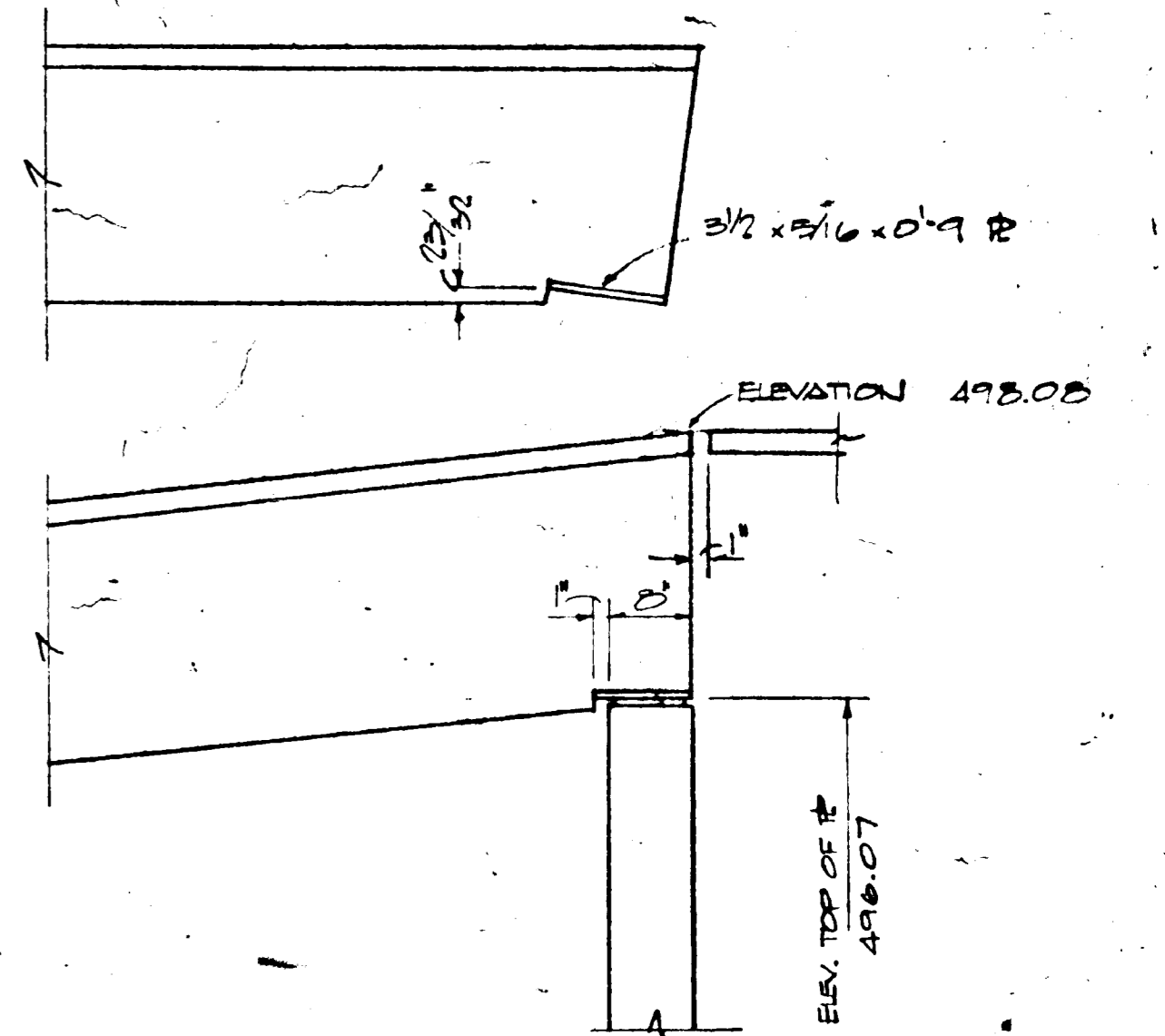




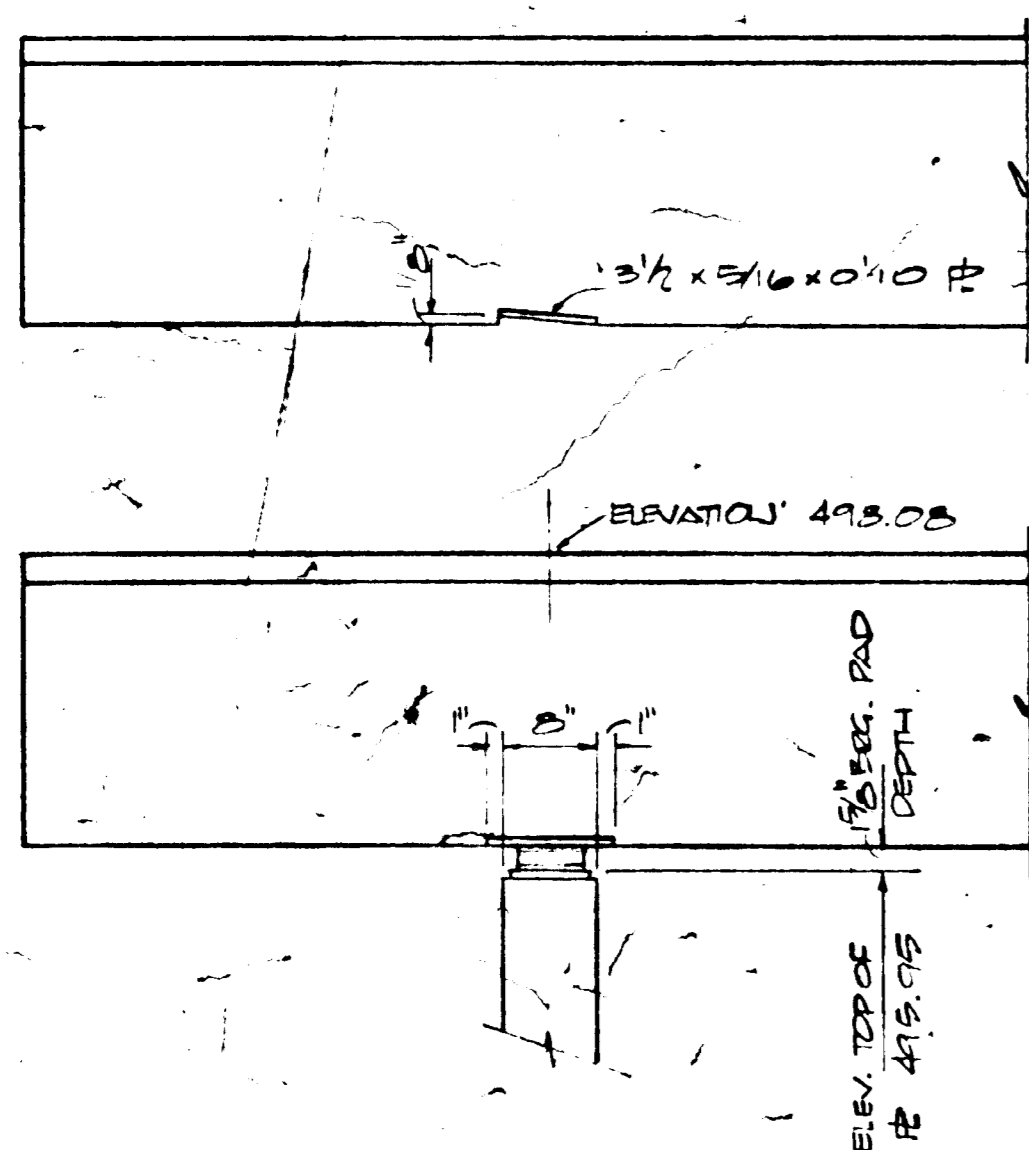
PIER 6



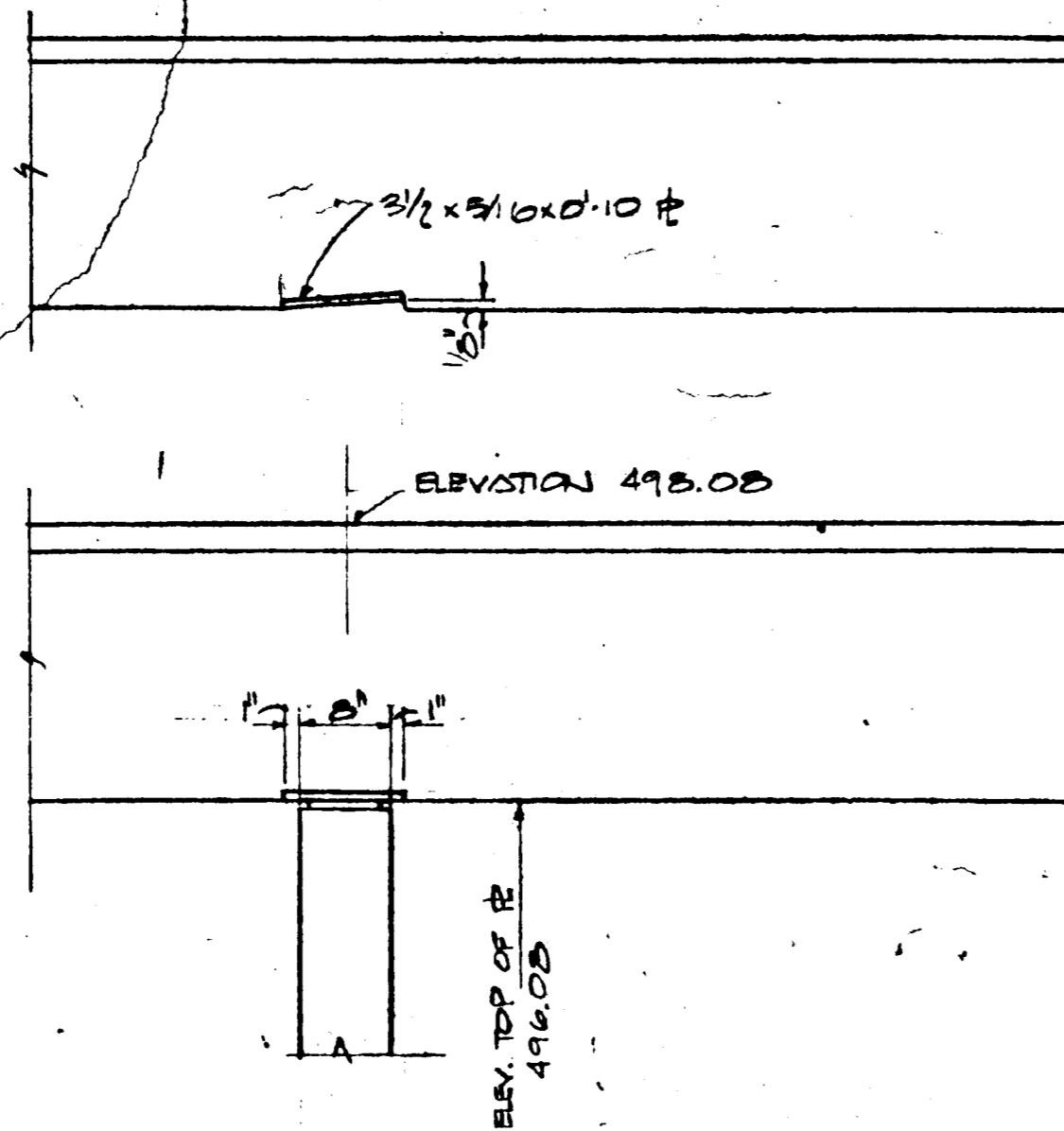
PIER 7



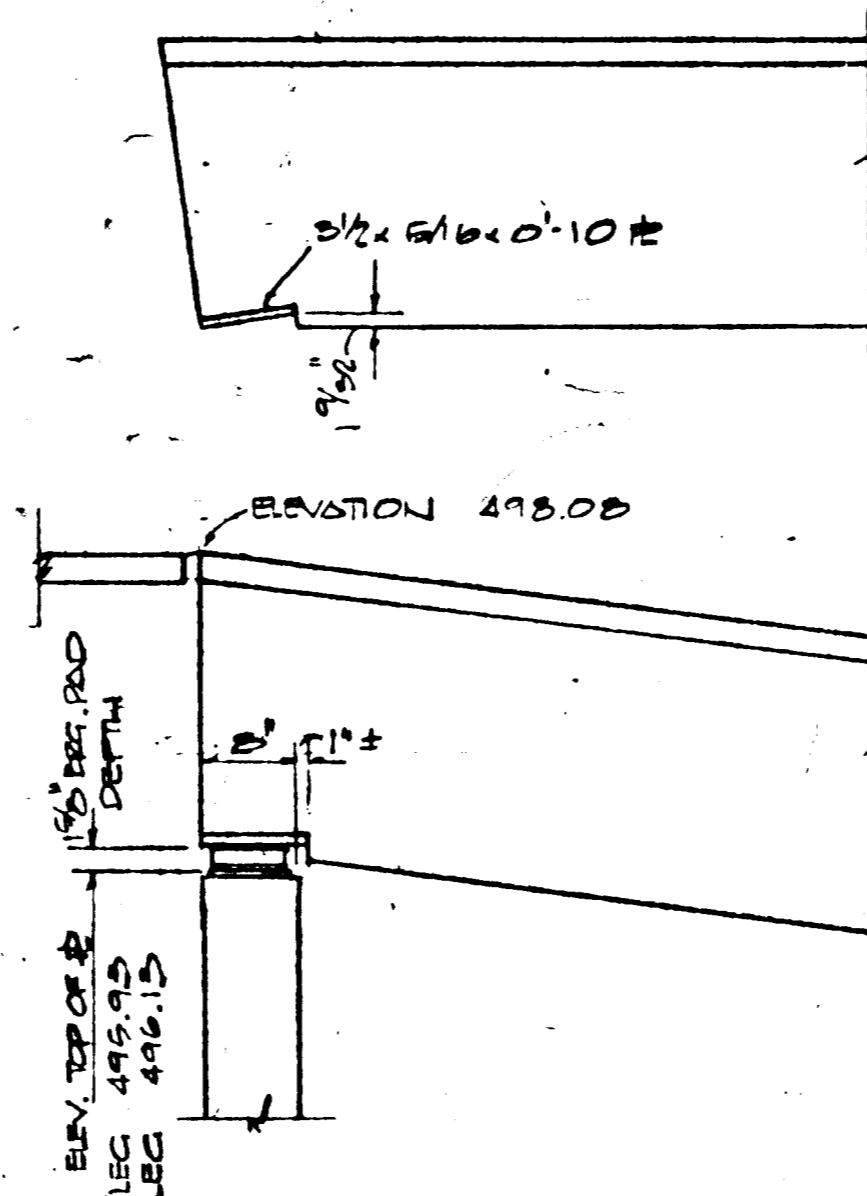
PIER 8 AT 5'-0" SLOPING TEE



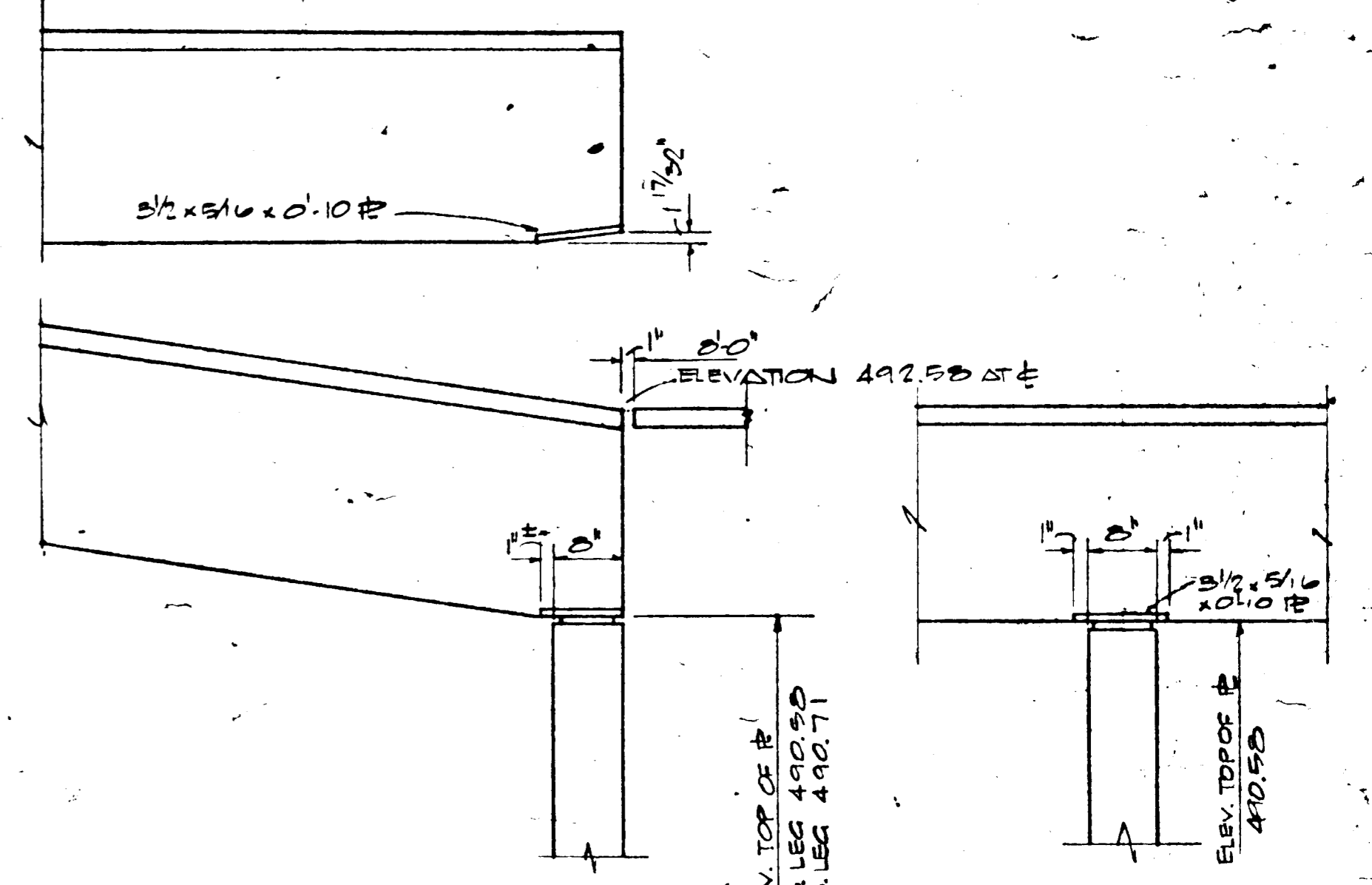
PIER 9 AT (2) 4'-0" TEES



PIER 9 AT (2) 4'-0" TEES

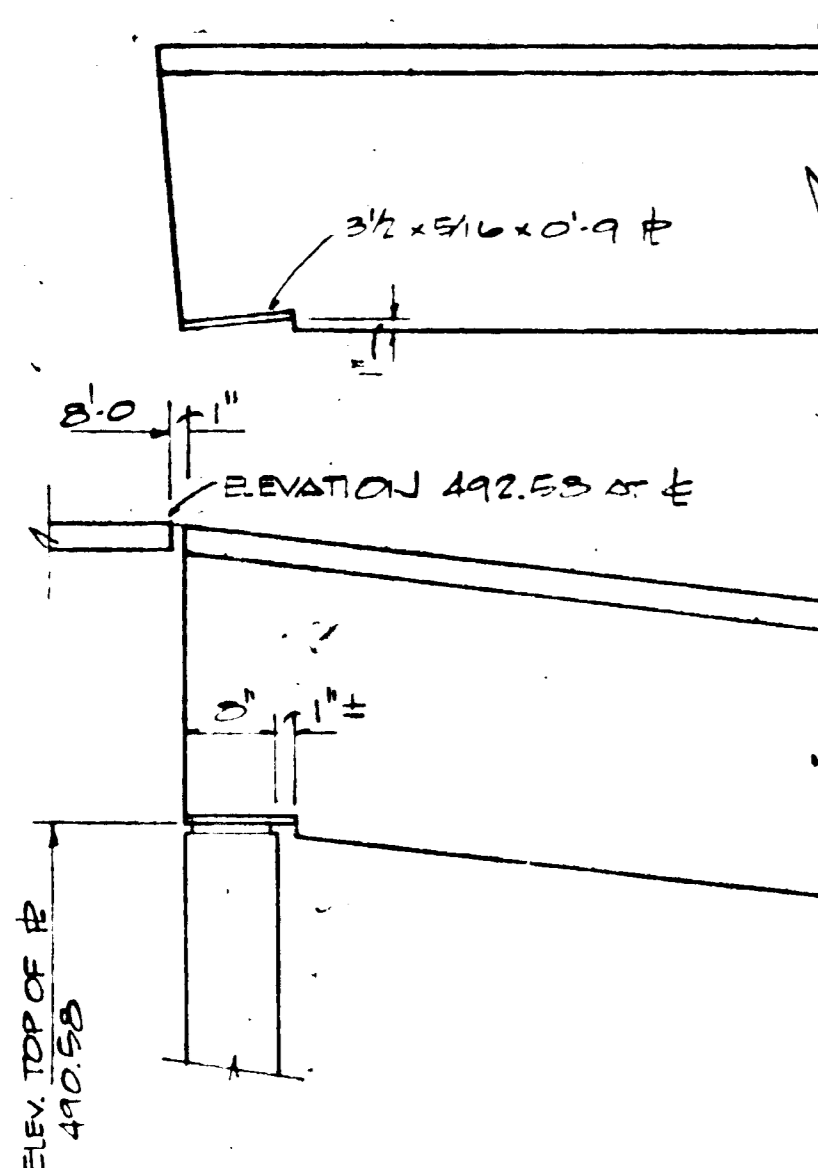


PIER 9 AT 5'-0" SLOPING TEE

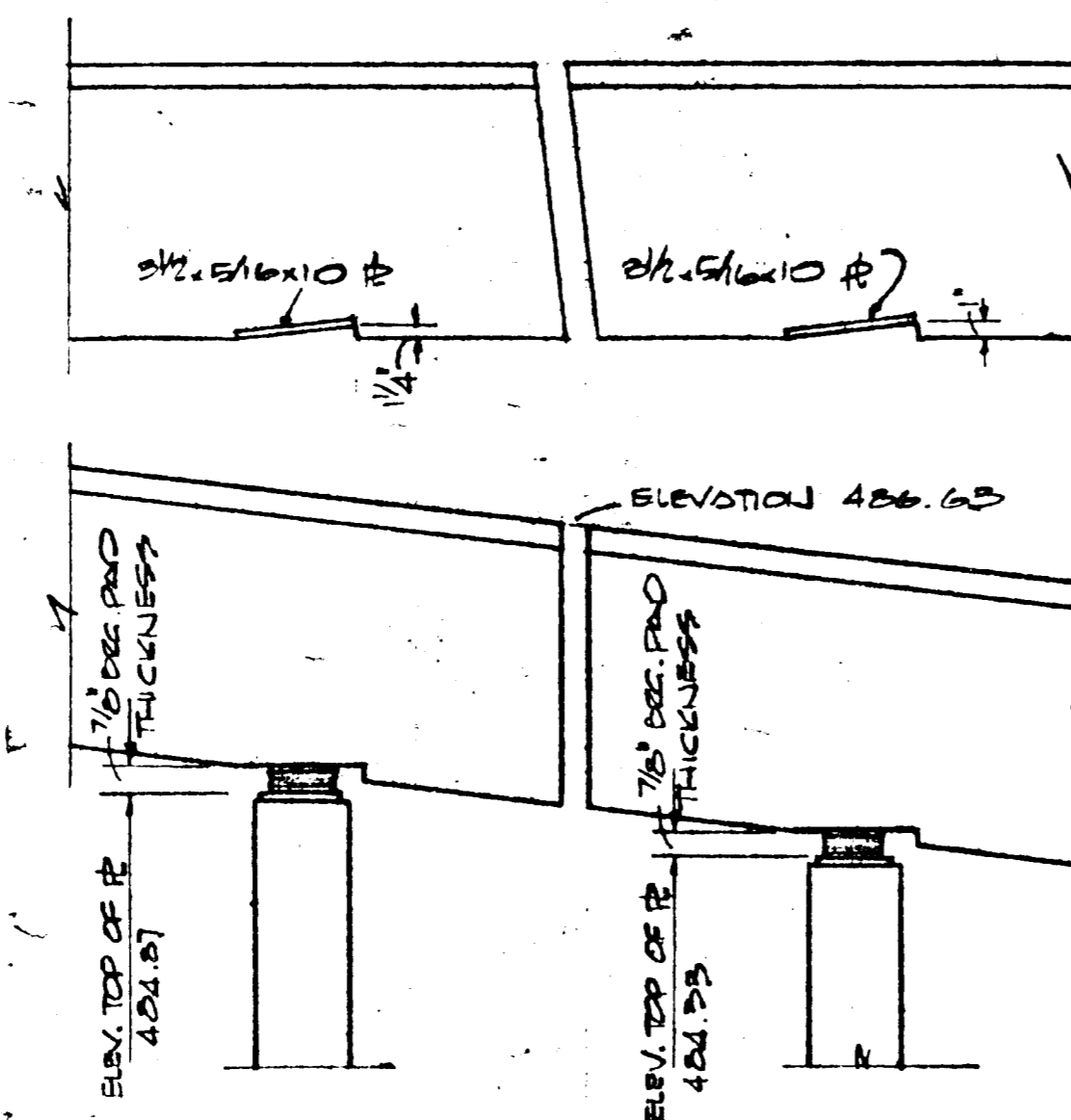


PIER 10 AT SLOPING TEE

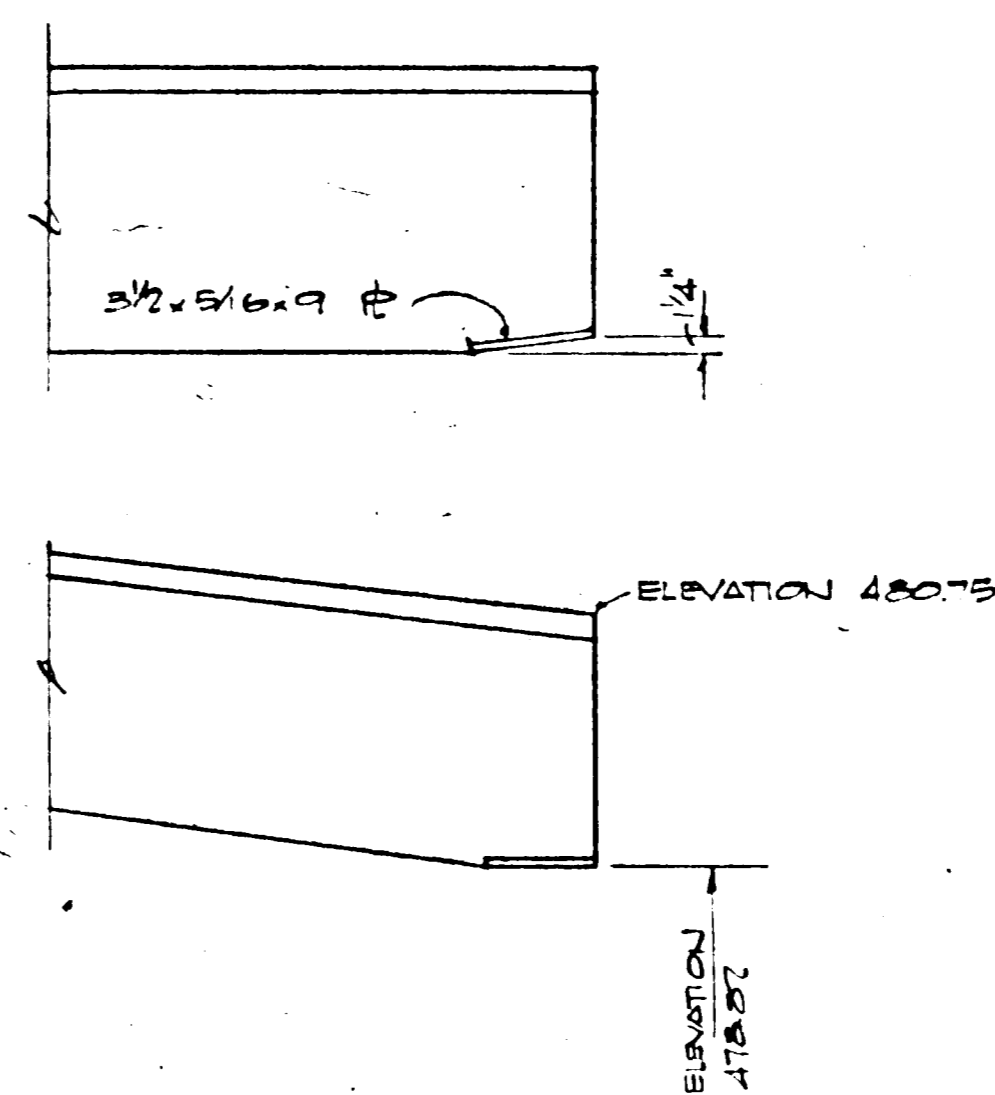
PIERS 10 AND 11 AT 4'-0" TEE



PIER 11 AT SLOPING TEE



PIER 12



PIER 13

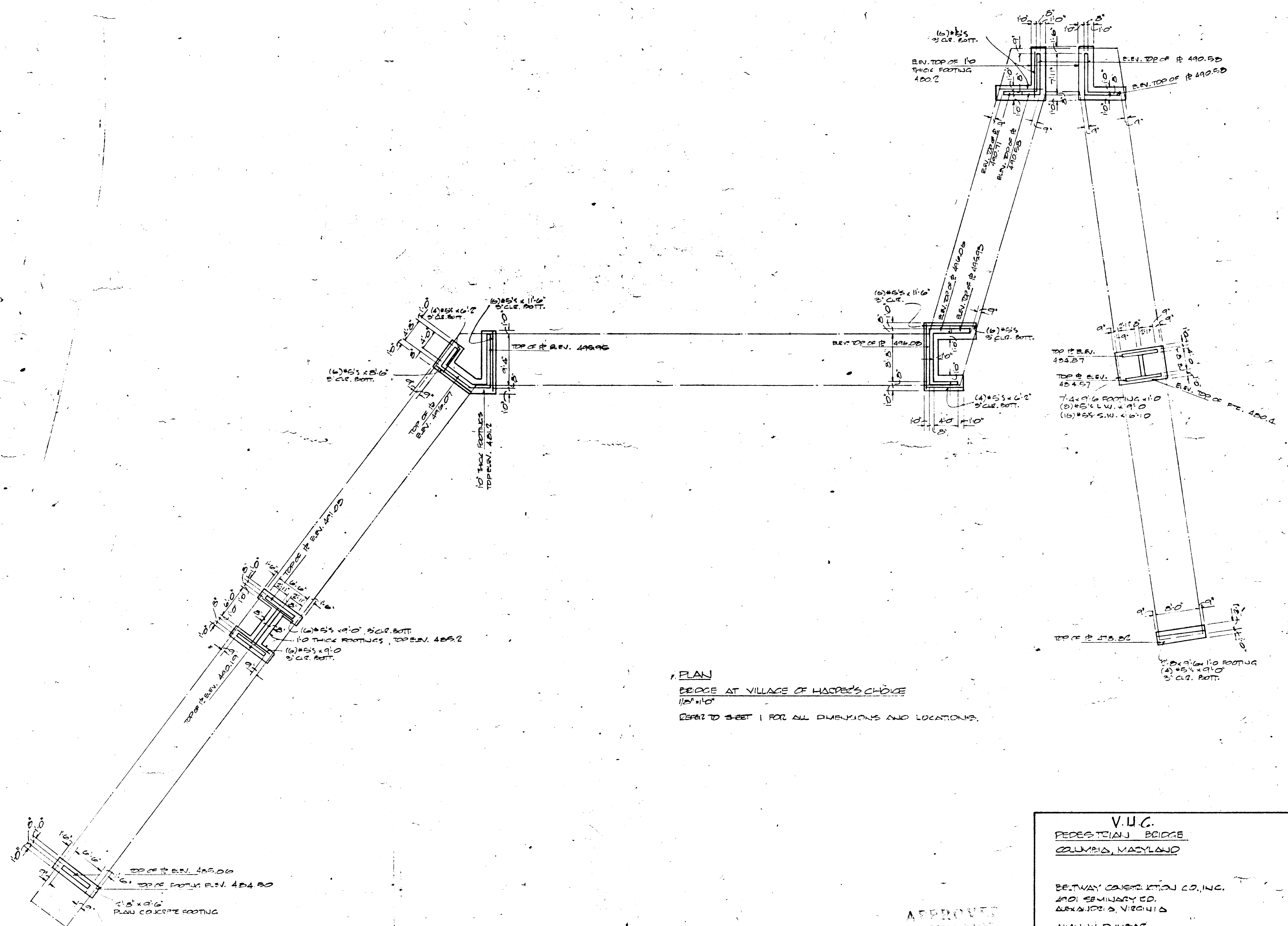
V.H.C.
 PEDESTRIAN BRIDGE
 COLUMBIA, MARYLAND

BELTWAY CONSTRUCTION CO., INC.
 4901 SEMINARY RD
 ALEXANDRIA, VIRGINIA

AVI W. DUNBAR
 CONSULTING STRUCTURAL ENGINEERS
 107 E. CARY ST., RICHMOND, VA.

MAY 21, 1970 SHEET 3

APPROVED
 PLANNING BOARD
 OF HOWARD COUNTY
 DATE 7-6-70



PLAN
 BRIDGE AT VILLAGE OF HARPER'S CHOICE
 112' x 110'
 REFER TO SHEET 1 FOR ALL DIMENSIONS AND LOCATIONS.

V.U.C.
 PEDESTALIAN BRIDGE
 COLUMBIA, MARYLAND

BELTWAY CONSTRUCTION CO., INC.
 1401 SEMINARY RD.
 ALEXANDRIA, VIRGINIA

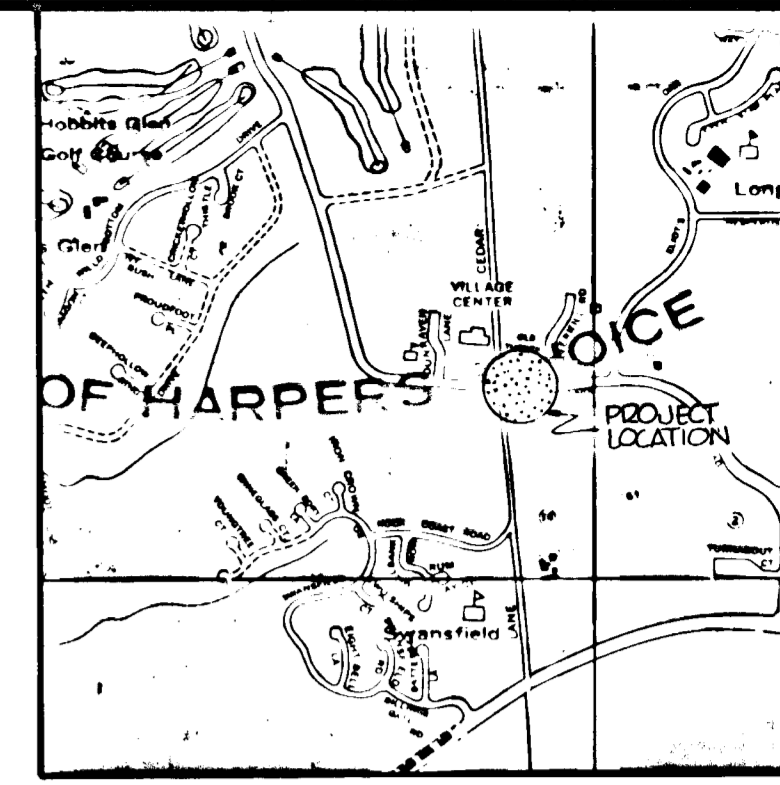
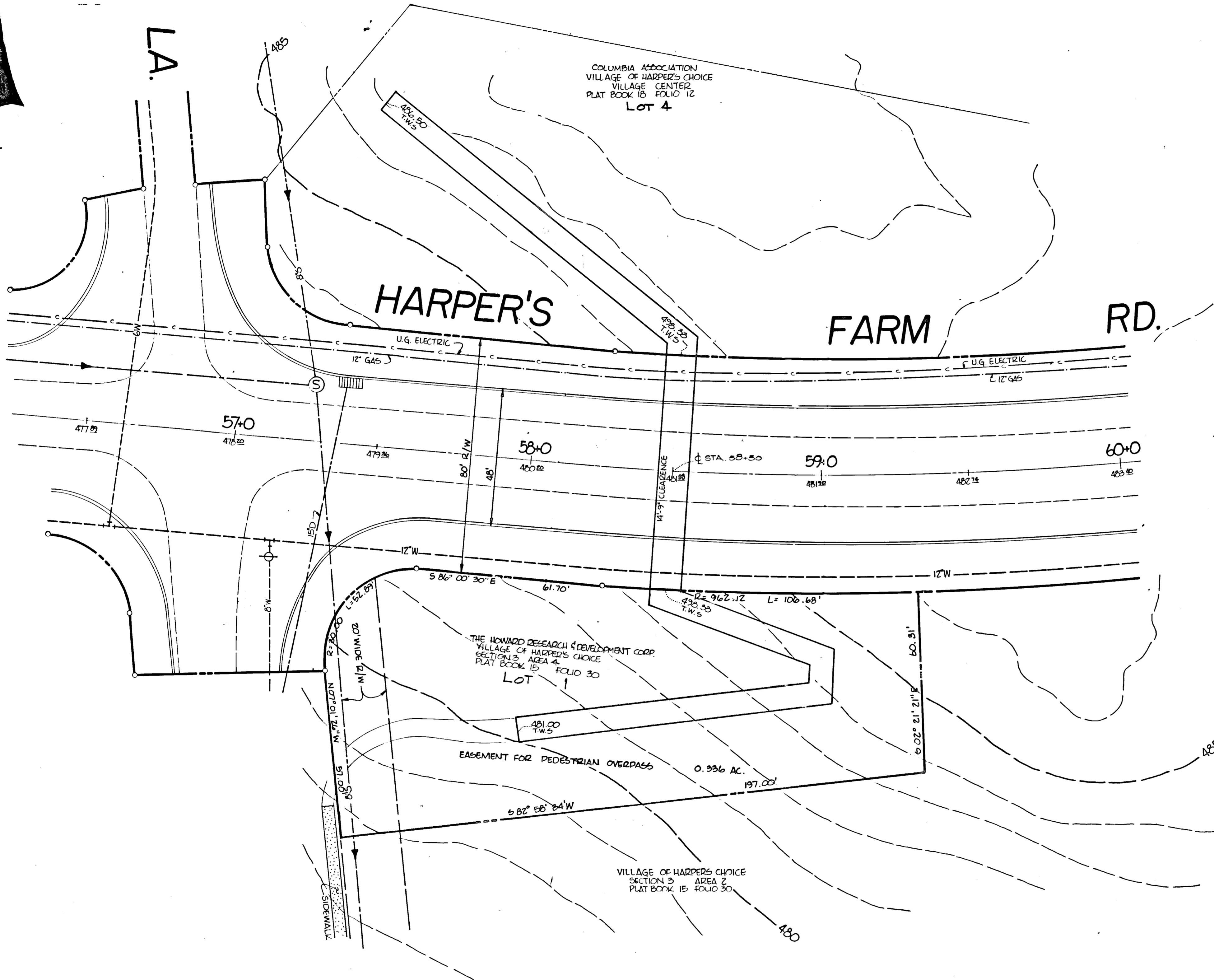
ALVIN W. DUNBAR
 CONSULTING STRUCTURAL ENGINEER
 107 E. CARY ST., RICHMOND, VA.

MAY 27, 1970 SHEET 4

APPROVED
 7-6-70

GRID NORTH

CEDAR LA.



VICINITY MAP
SCALE: 1/4" = 1 MI.

APPROVED
 PLANNING BOARD
 OF HOWARD COUNTY
 DATE 7-6-70
Patricia J...

APPROVED FOR PUBLIC/PRIVATE WATER AND PUBLIC/PRIVATE SEWERAGE SYSTEMS, HOWARD COUNTY HEALTH DEPARTMENT
Shelley... Sept. 1, 1970
 COUNTY HEALTH OFFICE

APPROVED: HOWARD COUNTY OFFICE OF PLANNING AND ZONING
Thomas A. Harris, Jr. 7-7-70
Pat Cleary 8-31-70
 COUNTY DEPARTMENT OF LAND DEVELOPMENT

APPROVED FOR PUBLIC WATER, PUBLIC SEWERAGE AND STORM DRAINAGE SYSTEMS AND ROADS
Thomas O'Neill 8-31-70
N.W. ... 8/31/70
 COUNTY DEPARTMENT OF PUBLIC WORKS
 COUNTY DEPARTMENT OF HIGHWAYS

APPROVED
 Howard Research & Development Corp
 by *DLG* date 7/1/70
 Engineering & Land Development

Rev Date	Rev No	Revision Description
COLUMBIA		
M A R Y L A N D		
OWNER AND DEVELOPER HOWARD RESEARCH AND DEVELOPMENT CORP. THE VILLAGE OF CROSS KEYS - BALTIMORE, MARYLAND 21210		
PROJECT AREA VILLAGE OF HARPER'S CHOICE HARPER'S FARM ROAD		
PROJECT TITLE PEDESTRIAN OVERPASS SITE PLAN		
Des By	Scale	Dwg No
Drn By C. CREAMER, JR.	1" = 20'	
Chk By	Date	C.C.F. No
	6-9-70	
	Approved	C-0-0-70451