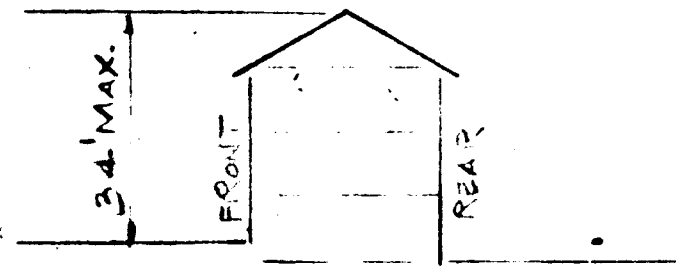


TYPICAL TRANSFORMER INSTALLATION
No Scale

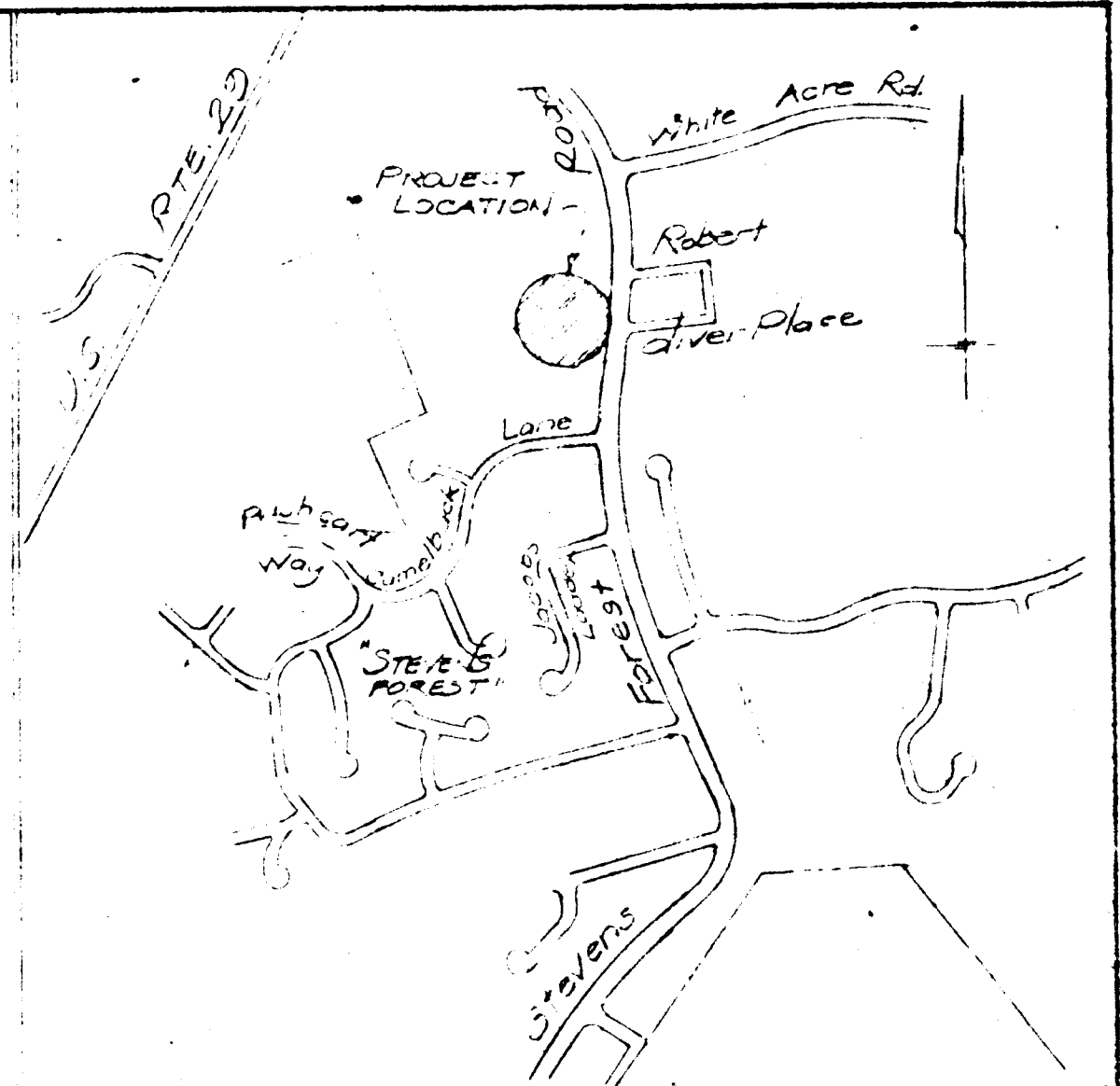
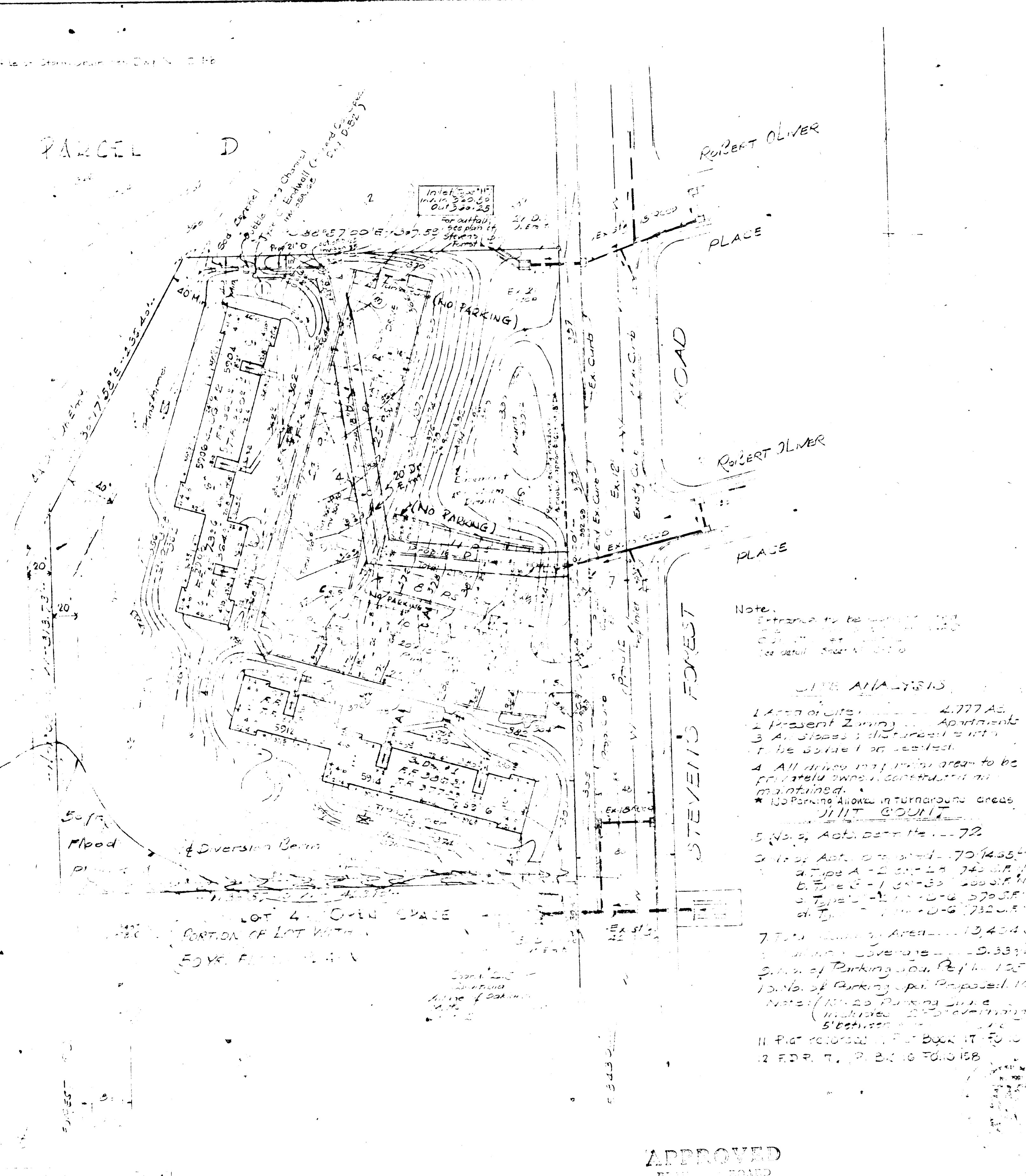
LEGEND

- ⊕ Mushroom Light
- ⊗ Trash Enclosure
- ⊠ Transformer (See detail above)
- ⊡ Proposed Maintenance Shop (Location Only)



SCHEMATIC BLDG PROFILE
No Scale

PARCEL D



VICINITY MAP
Scale: 1" = 300'

LEGEND

- Water
- Gas
- Electric
- Sanitary Sewer
- Storm Drain (Proposed)
- Storm Drain (Existing)
- Utility Vault
- Street Light
- Fire Hydrant
- Water Valve

Note:
Entrance to be located at the intersection of Stevens Forest Road and Robert Oliver Place.

SOIL ANALYSIS

- 1 Area of site is 2.777 Ac.
- 2 Present Zoning is Apartments
- 3 All signs and structures to be removed or altered to be in accordance with the code.
- 4 All utility lines in area to be privately owned, constructed and maintained.
- 5 No parking allowed in turnaround areas.
- 6 No. of Automobiles = 72
- 7 1st Floor Area = 10,424 sq ft
2nd Floor Area = 10,424 sq ft
Total Area = 20,848 sq ft
8 No. of Parking Spots = 125
9 No. of Parking Spots Proposed = 105
10 Note: (10) 20' Parking Spots
11 Plot ratio = 1.17
12 F.P.R. = 2.0

GENERAL NOTES

1. Topo taken from Base Maps prepared by Maps Inc., Feb. 1968 and is subject to field verification.
2. Utilities shown are those closest to the site as of the date of this survey. In cases where utilities are not shown, no preliminary or final plans have been prepared.
3. This survey subject to revisions as more up-to-date information is available.

The following is the procedure of hydro-seeding:
1 Top lime per acre - 400 # of 5-10-5 lime
1 phosporus raked in 200 #/AC of seed:
100# Kentucky Blue
20# Penn Lawn Fescue
25# Resitop
With See 1: 400# 10-6-4 (Straw)
1 Top mulch (Straw)
A-E Emulsion tack Coat
Seed the following areas: Kentucky Blue seed
1) 181sq. ft. Park area
2) 20' x 30' rear of Bldgs.

SITE DEVELOPMENT PLAN

DATE	10-27-69
Rev. Date	Rev. No.
Revision Description	
COLUMBIA MARYLAND	
OWNER AND DEVELOPER HOWARD RESEARCH AND DEVELOPMENT CORP. THE VILLAGE OF CROSS KEYS - BALTIMORE, MARYLAND 21210	
PROJECT AREA	WASH OF OAKLAND MILLS
SECTION	2 STEVENS FOREST AREA 3
PROJECT TITLE	OAKLAND MILLS APARTMENTS
Des. By	Scale 1" = 30'
Dir. By	Date 10-27-69
Chk. By	Approved
A-1-b	

APPROVED
BOARD OF HEALTH
OF HOWARD COUNTY
DATE JUN 17 1970

APPROVED FOR PUBLIC WATER AND PUBLIC SEWERAGE
HOWARD COUNTY HEALTH DEPARTMENT
DATE 7/13/70

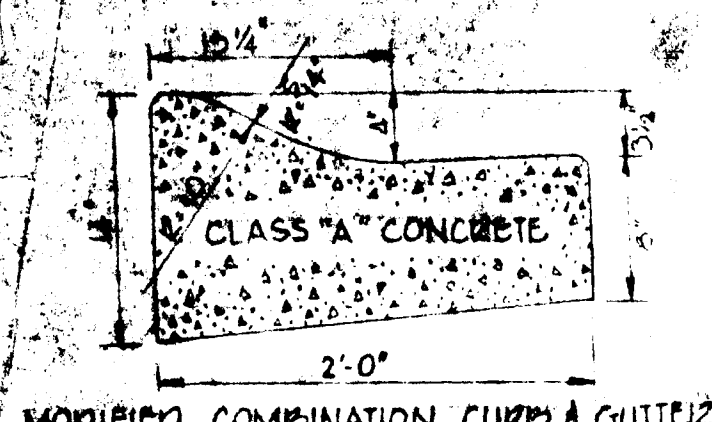
APPROVED FOR PUBLIC WATER AND PUBLIC SEWERAGE,
STORM DRAINAGE SYSTEMS AND PUBLIC ROADS
HOWARD COUNTY DEPARTMENT OF PUBLIC WORKS
DATE 7-13-70

APPROVED HOWARD COUNTY OFFICE OF PLANNING AND ZONING
DATE 7-13-70

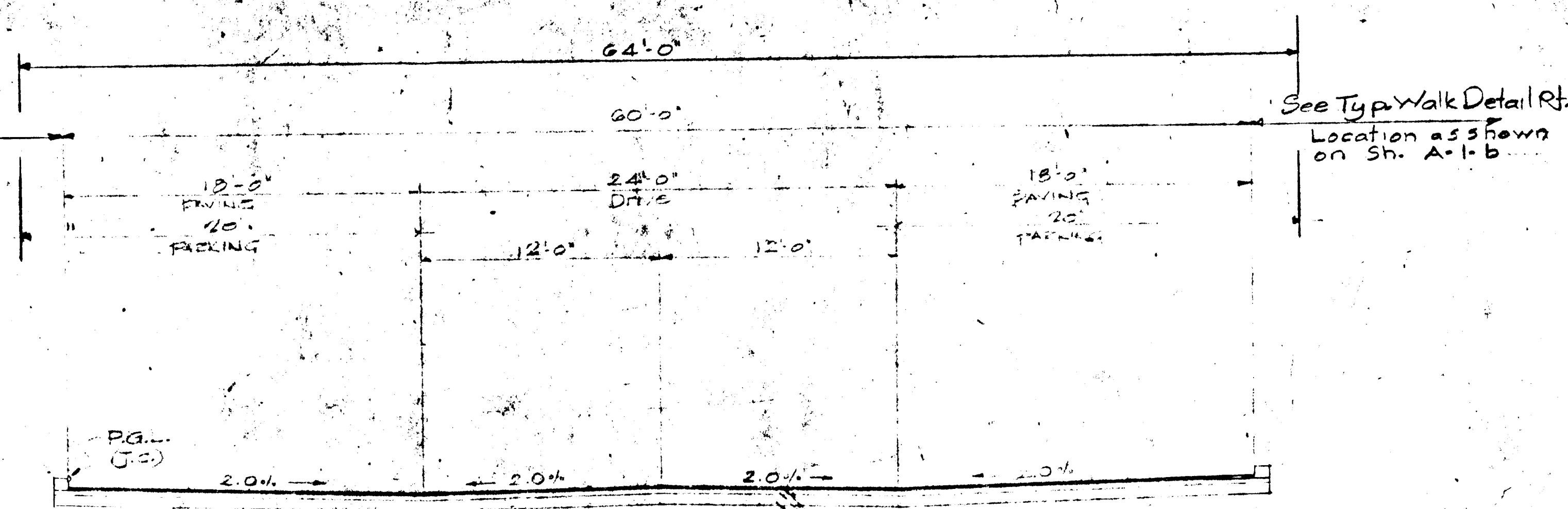
MATZ CHILDS & ASSOC. ARCHTS
225 BROMFIELD DRIVE
BETHESDA, M.D. 20814

See Typ. Walk Detail Rf.

Location as shown on Sh. A-1-b



MODIFIED COMBINATION CURB & GUTTER



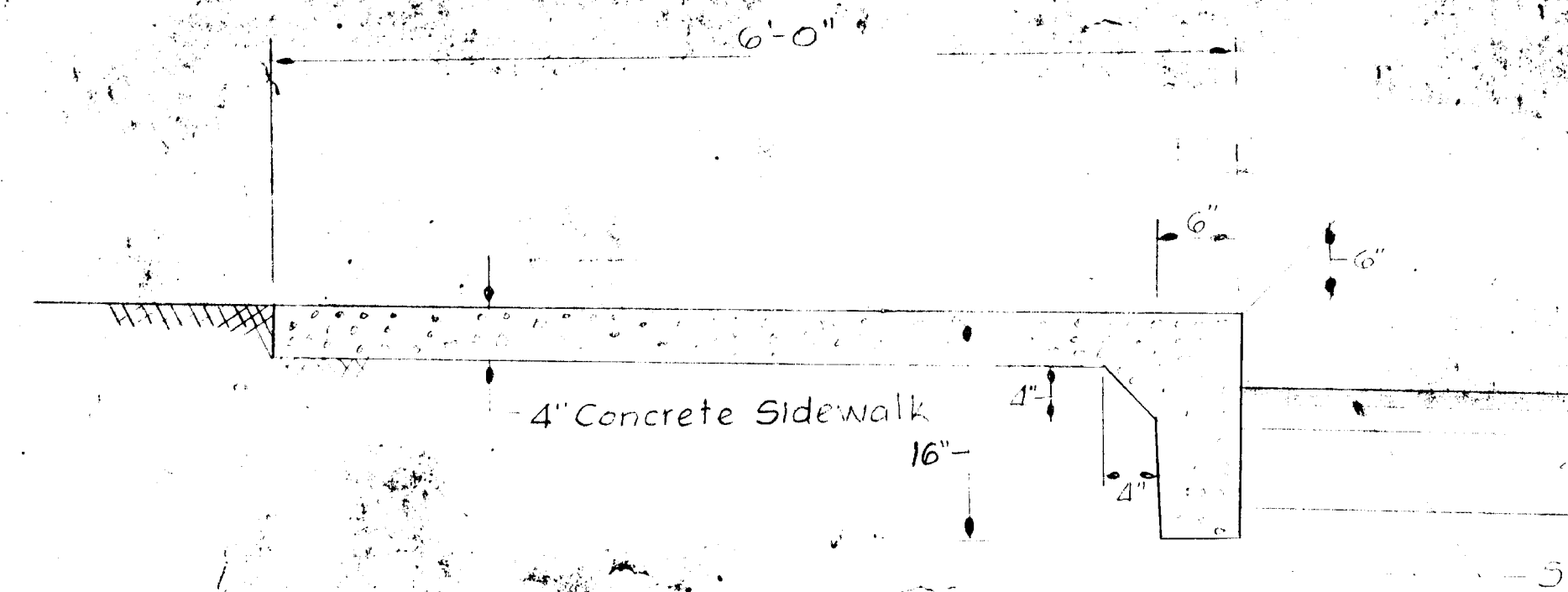
SECTION A-A

SEE PLAN FOR LOCATIONS

Scale: 1" = 5'-0"

64'-0"

- 1 1/2" M.S.P.C. Spec. B Bit. Conc. Surf. Course (Sand P-1-G) Stone
- 2" M.S.P.C. Spec. B Bit. Conc. Base Course (Sand P-2) Stone
- 5" CR-467 Stone Aggregate (3 Comp. Depth)

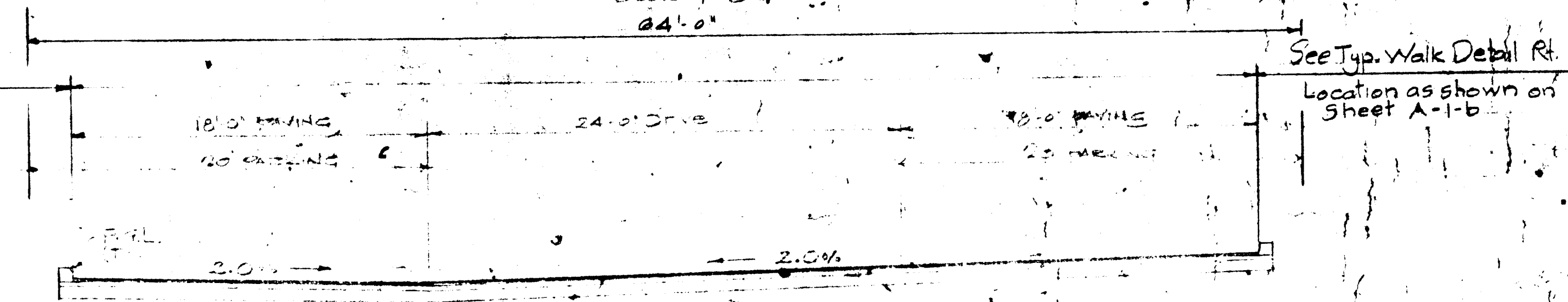


6'-0" SIDEWALK ADJOINING PARKING OR DRIVE

Not to Scale

See Typ. Walk Det Rf.

Location as shown on Sh. A-1-b



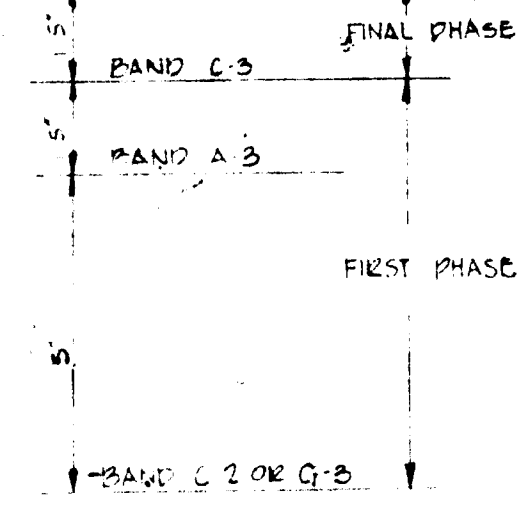
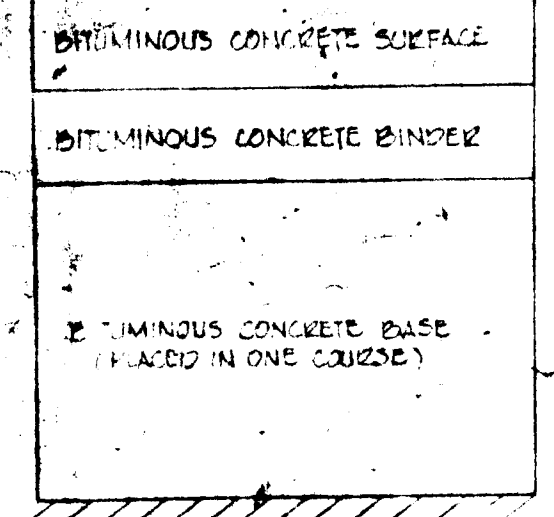
SECTION B-B

AT DRIVELINE ONLY, SEE PLAN.

Scale: 1" = 5'-0"

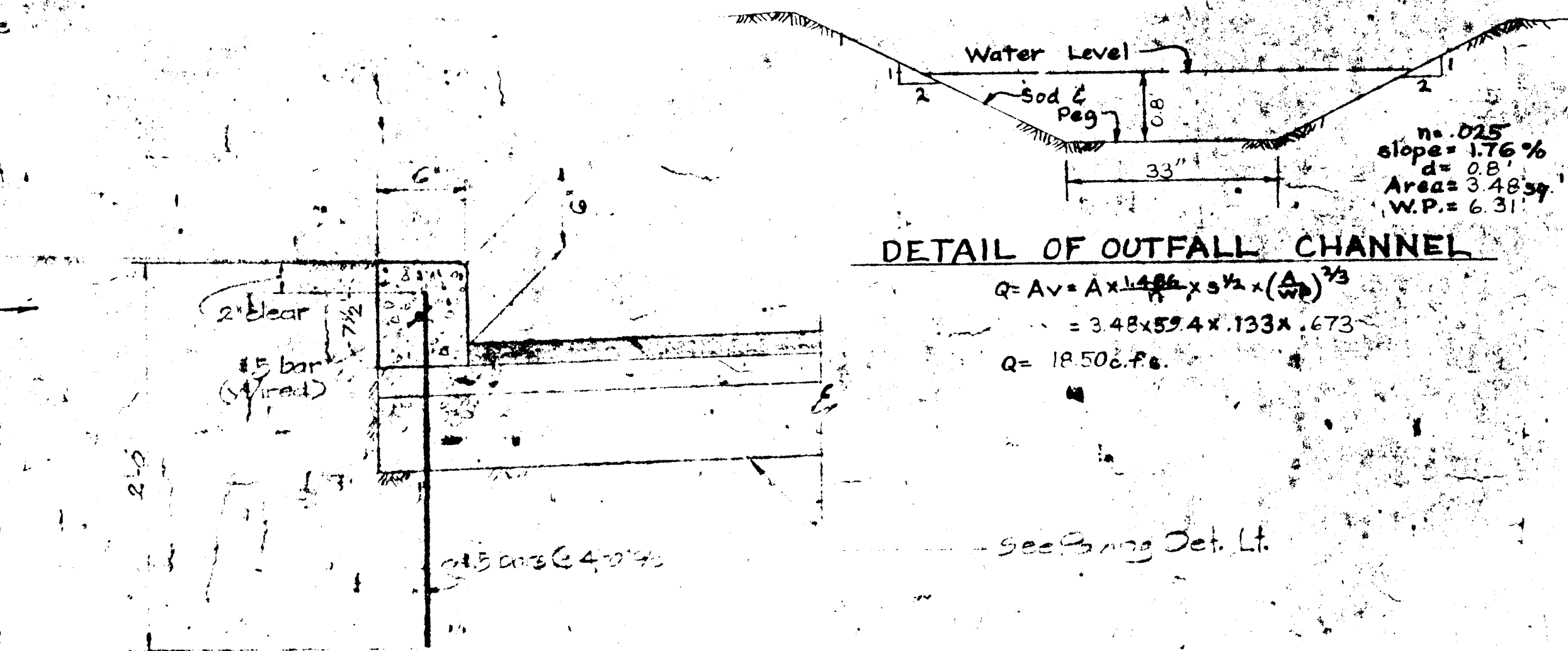
64'-0"

- CLEARING & GRADING: ARTICLE C-1
- SUBGRADE: ARTICLE C-2
- BASE COURSE: ARTICLE C-3 OR C-55
- BINDER COURSE: ARTICLE C-4
- SURFACE COURSE: ARTICLE C-5



See Typ. Walk Detail Rf.

Location as shown on Sheet A-1-b



DETAIL OF OUTFALL CHANNEL

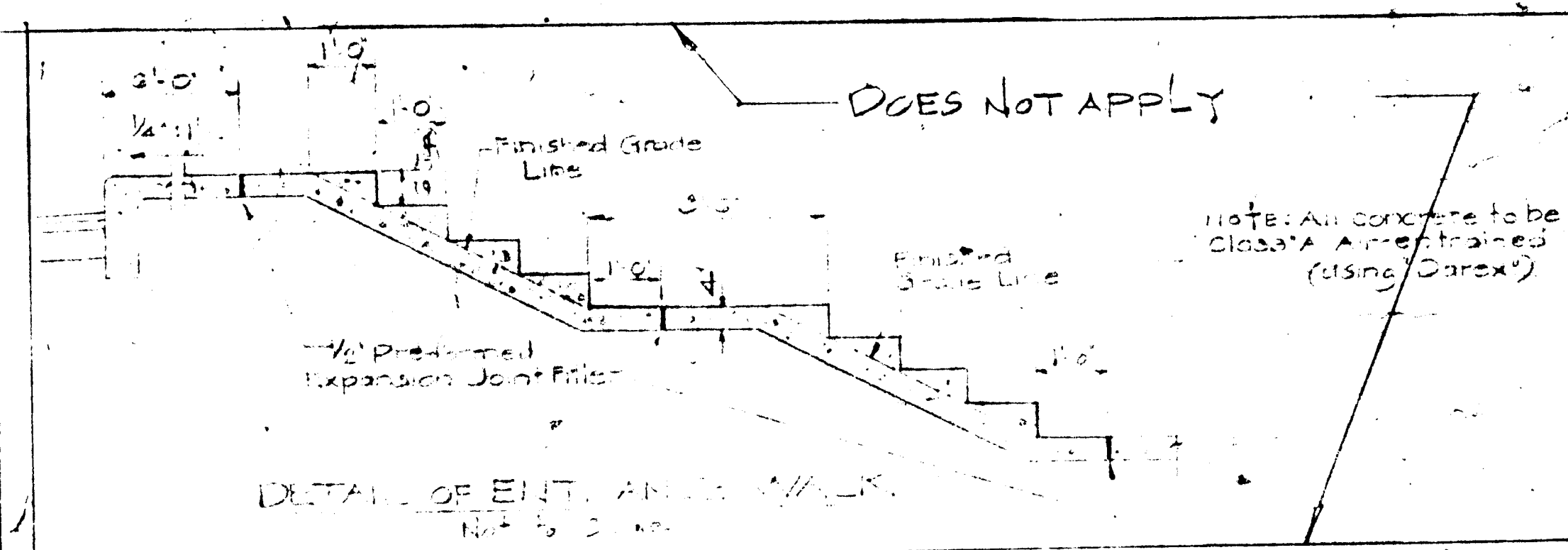
$$Q = A \cdot V = A \cdot 1.486 \cdot R^{2/3} \cdot S^{1/2}$$

$$= 3.48 \cdot 59.4 \cdot 1.133 \cdot .673$$

$$Q = 1850 \text{ cfs}$$

TYPICAL CURB SECTION

Scale: 1" = 1'-0"



DETAIL OF ENT. AND EX. WALK

DOES NOT APPLY

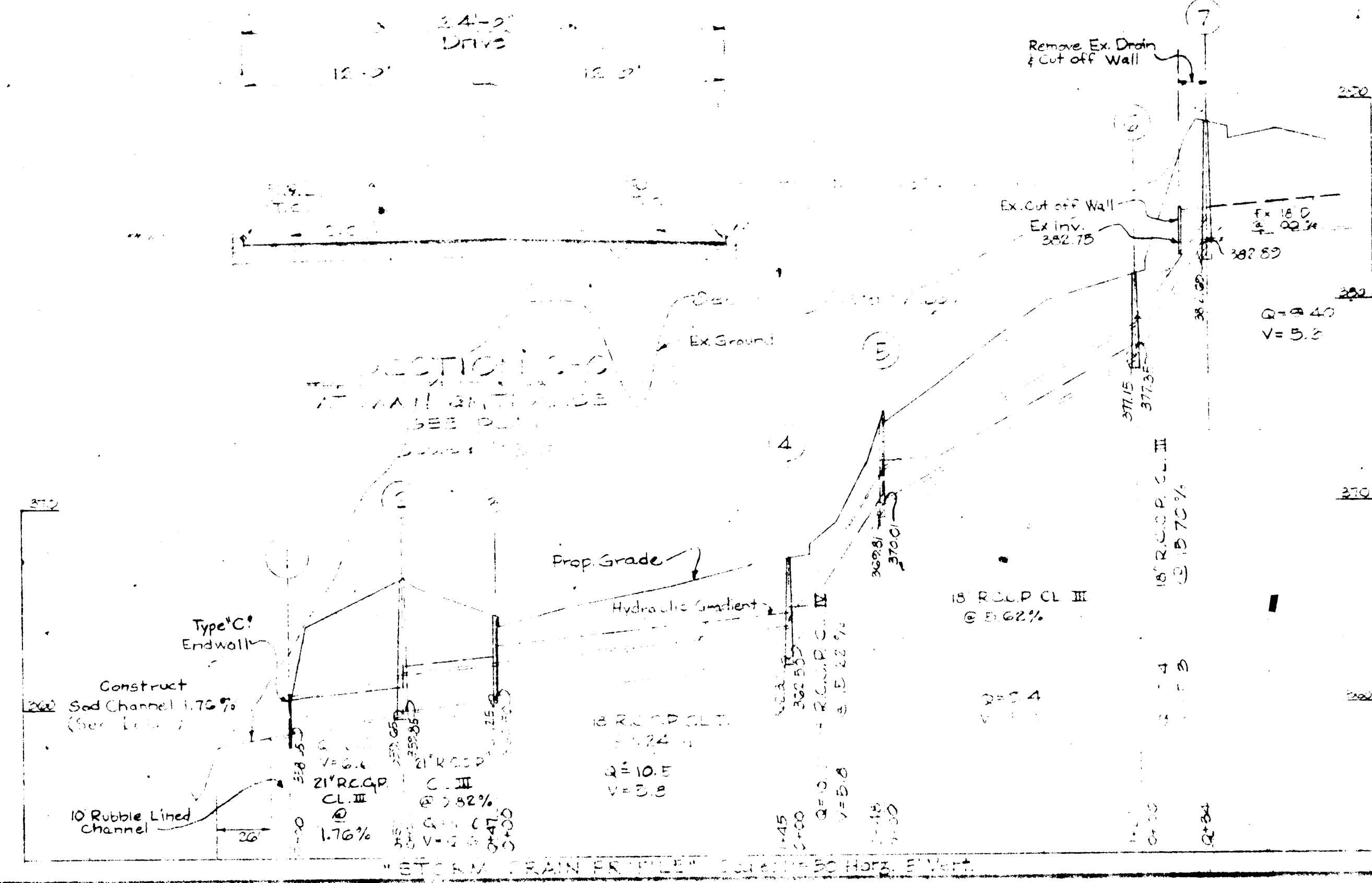
Note: All concrete to be class "A" Air-entrained (using Carex)

APPROVED
PLANNING COMMISSION
2-16-70
APPROVED
HOWARD COUNTY PLANNING COMMISSION
2-16-70
APPROVED
HOWARD COUNTY PLANNING COMMISSION
2-6-70

APPROVED
PLANNING COMMISSION
2-13-70

APPROVED
PLANNING COMMISSION
OF HOWARD COUNTY
DATE JUN 17 1970 JUN 17 1970

MATZ ENGINEERS & ARCHITECTS
169-165
DATE JUN 17 1970



SECTION C-C

AT WALK LINE, SEE PLAN.

Scale: 1" = 5'-0"

64'-0"

STRUCTURE SCHEDULE

No.	TYPE	TOP EL.	REMARKS
1	Type C Endwall	-	Std. Dwg. D-52
2	Manhole	367.0	Std. Dwg. D-103
3	Class. Inlet	364.5	Std. Dwg. D-76
4	Manhole	367.5	Std. Dwg. D-103
5	Class. Inlet	364.5	Std. Dwg. D-76
6	Manhole	352.2	Std. Dwg. D-103
7	Manhole	353.4	Std. Dwg. D-103

SITE DEVELOPMENT PLAN

STORM DRAIN PROFILE, TYPICAL CROSS SECTIONS & DETAILS

Rev. No.	Rev. Date	Revision Description
1	11-5-69	Storm drain data
2	12-3-69	Walk Detail per County comments
3	1-27-70	Per County Comments

COLUMBIA
MARYLAND

OWNER AND DEVELOPER
HOWARD RESEARCH AND DEVELOPMENT CORP.

PROJECT AREA
VILLAGE OF OAKLAND MILLS
SEC. 2 STEVENS FOREST AREA 3

PROJECT TITLE
OAKLAND MILLS
PARCEL E APARTMENTS

Des. By: P.S.S. Scale: AS SHOWN Dwg. No.
Dwn. By: P.S.S. Date: 11/5/69 C.C.F. No.
Chk. By: P.S.S. Approved

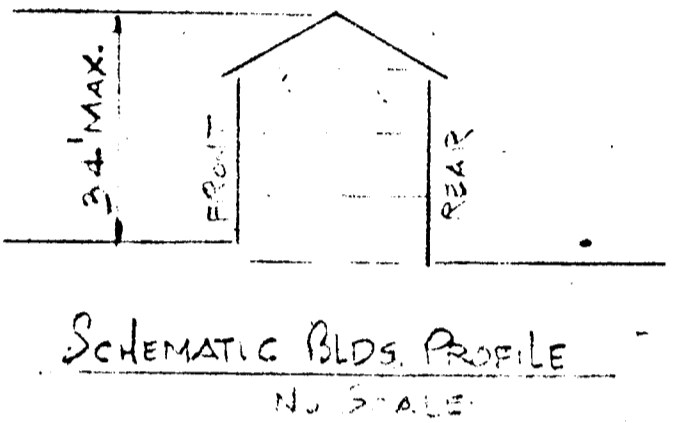
C-1b

C.C.F. D-1-3-21 2012 S.P.70

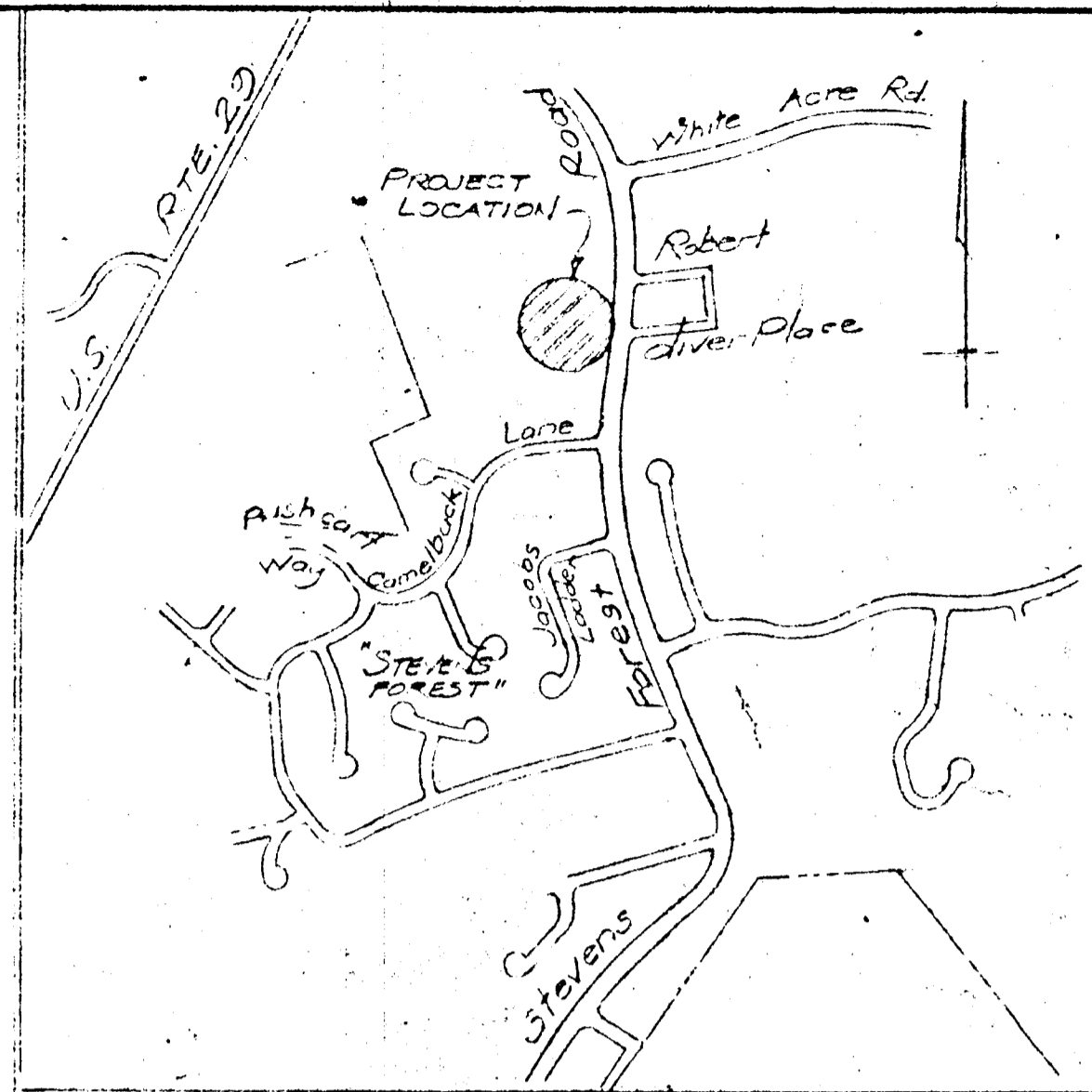
TYPICAL TRANSFORMER INSTALLATION
No Scale

LEGEND

- + Mushroom Light
- ⊗ Trash Enclosure
- ⊠ Transformer (See detail above)
- ⊡ Proposed Maintenance Shop (Location Only)



Note: For Profile of Storm Drain See Dwg. No. C-1-b



- LEGEND
- Water
 - Gas
 - Electric
 - Sanitary Sewer
 - Storm Drain (Proposed)
 - Storm Drain (Existing)
 - Switch Gear
 - Street Light
 - Fire Hydrant
 - Gas Valve
 - Water Valve

PARCEL D



The Howard Research & Development Corporation
Plan 463 File 15a1

Note:
Entrance to be constructed in accordance with HOWARD COUNTY ORDINANCE
See detail - Sheet No. C-1-b

SITE ANALYSIS

1. Area of Site - 4.777 Ac.
2. Present Zoning - Apartments
3. All slopes & disturbed earth to be sodded or seeded.
4. All drives and parking areas to be privately owned, constructed and maintained.
- * No Parking Allowed in turnaround areas
5. No. of Auto. permitted - 72
6. Unit of Auto. proposed - 70 (465 S.F./unit)
 - a. Type A - 2 BR - 28 (740 S.F./unit)
 - b. Type B - 1 BR - 35 (200 S.F./unit)
 - c. Type C - 1 BR - D-G (370 S.F./unit)
 - d. Type D - 1 BR - D-G (732 S.F./unit)
7. Total Building Area - 13,454 S.F.
8. Building Coverage - 2.33%
9. No. of Parking Sp. Req'd - 125
10. No. of Parking Sp. Proposed - 105
- Note: (10 x 20' Parking Space) includes 2' overhang, 5' between sidewalk & curb
11. Plat recorded in Plat Book 17, Folio 89
12. F.D.P. 72, P. BK 16, Folio 158

GENERAL NOTES

1. Topo taken from Base Maps prepared by Mans Inc., Feb., 1965 and is subject to field verification.
2. Utilities shown are those closest to the site as of the date of this survey. In cases where utilities are not shown, no preliminary or final plans have been prepared.
3. This survey subject to revisions as more up-to-date information is available.

The following is the procedure of Hydro-seeding:
1 Ton Lime per acre - 200 # of 5-10-5 lime
7 phosphorus raked in 200 #/Ac. of Seed:
100# Kentucky Blue
50# Penn. Lawn Fescue
25# Rye
25# Redtop

With Seed: 400# 10-6-4 (Straw)
1 Ton Mulek (Straw)
A-E-4 Emulsion tack Coat
Sod the following areas (Kentucky Big Sod):
1) 131 sq. ft. Parking Area
2) 20' x 30' rear of Bldgs.

SITE DEVELOPMENT PLAN

1-27-70	1	Per County Comments
12-9-69	2	Per County Comments
11-5-69	1	Storm drainage proposed
Rev Date	Rev No	Revision/Description

COLUMBIA
MARYLAND

OWNER AND DEVELOPER
HOWARD RESEARCH AND DEVELOPMENT CORP.
THE VILLAGE OF CROSS KEYS - BALTIMORE, MARYLAND 21210

PROJECT AREA
VILLAGE OF OAKLAND MILLS
SECT. 2 STEVENS FOREST AREA 3

PROJECT TITLE
OAKLAND MILLS
PARCEL D APARTMENTS

Des By: P.S.S. Scale: 1"=50'
Dwn By: W.A.V.P. Date: Oct. 21, 1969
CHK By: P.S.S. Approved

APPROVED
PLANNING BOARD
OF HOWARD COUNTY
DATE: JUN 17 1970

HOWARD SOIL CONSERVATION DISTRICT
This development plan is approved for soil erosion and sediment control by the Howard Soil Conservation District.
Reviewed: Edward J. Law 10-27-69
District Conservationist Date
Approved: Robert J. Young 10-27-69
District Soil Conservationist Date

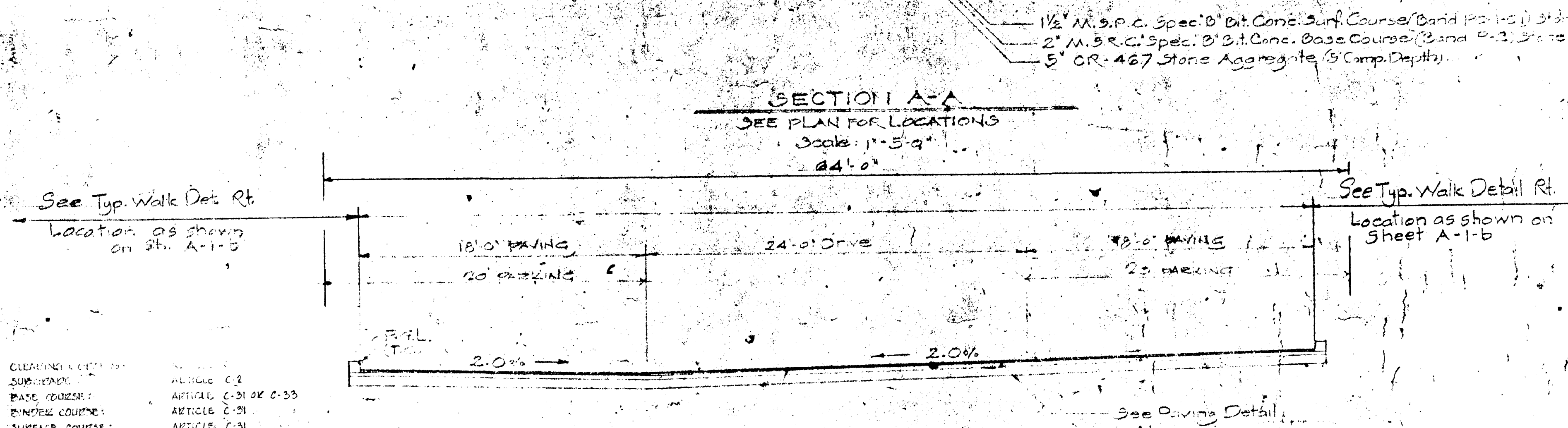
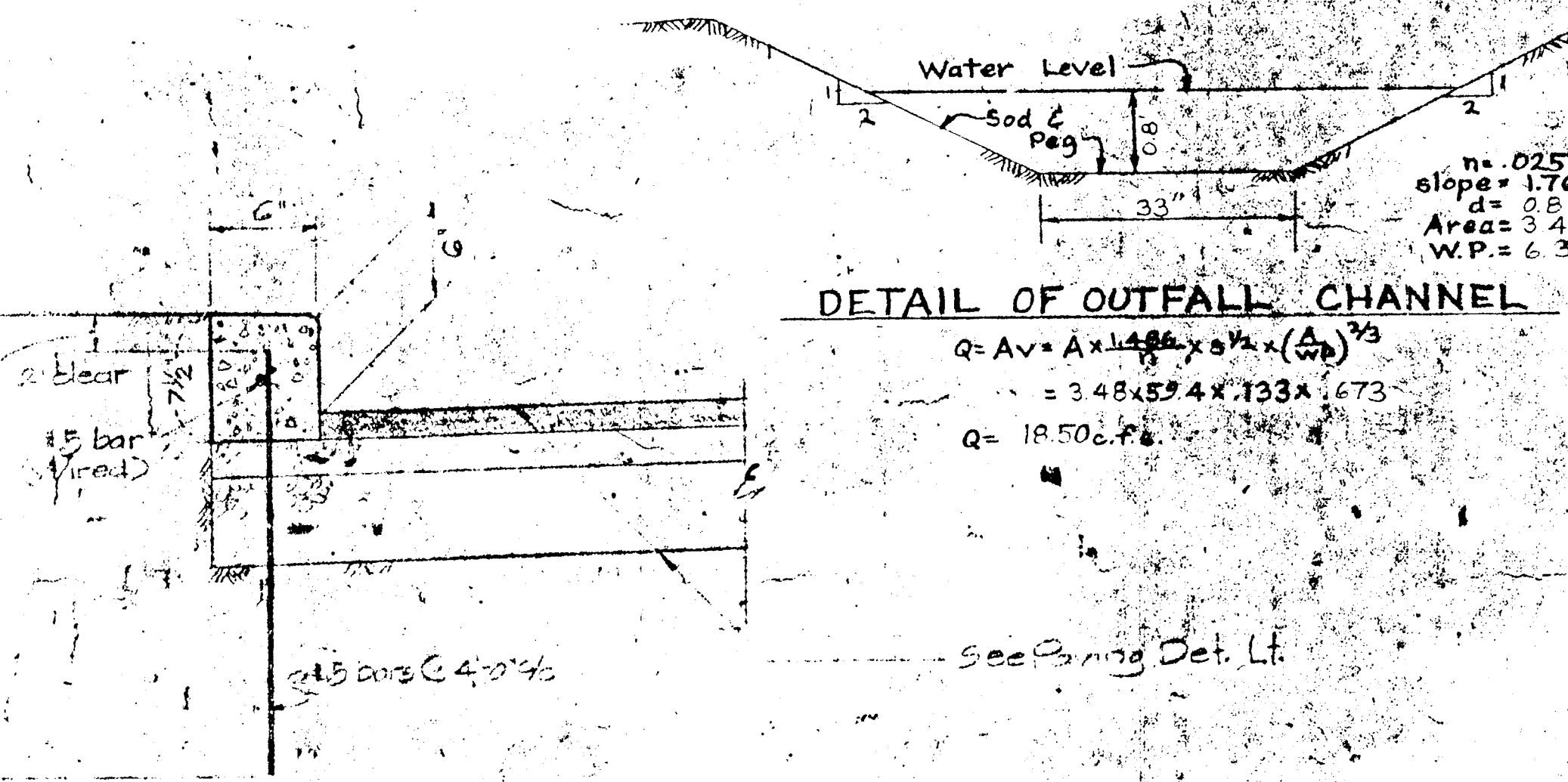
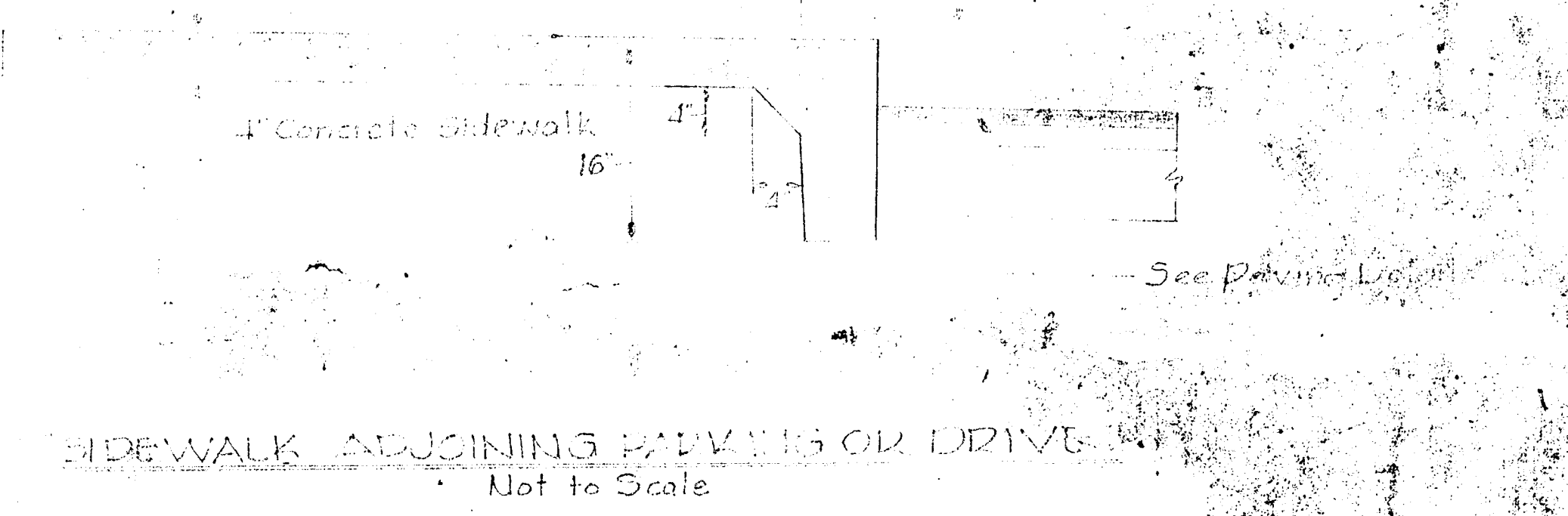
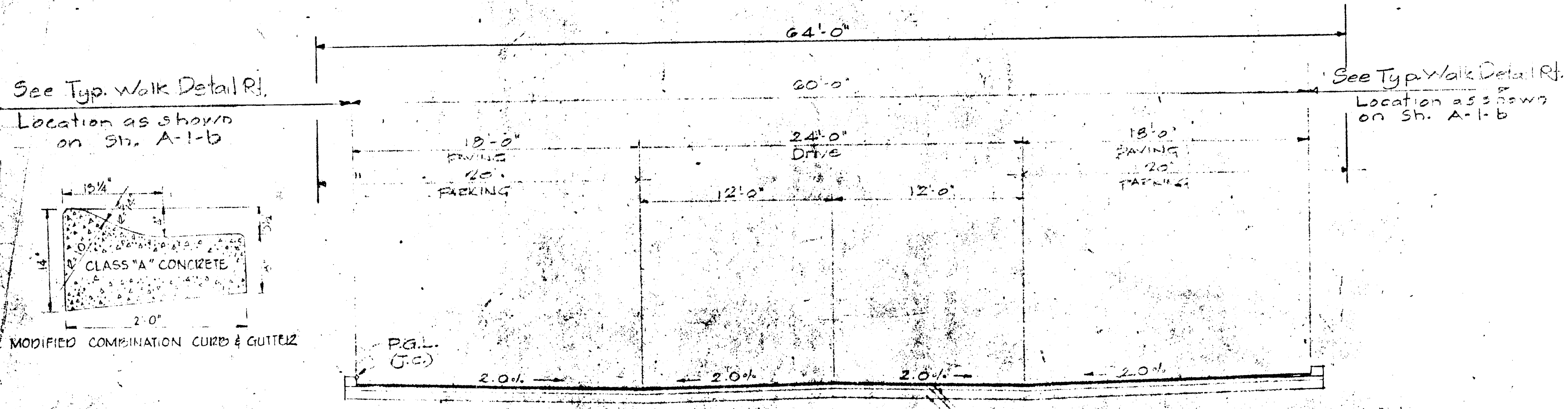
APPROVED FOR PUBLIC WATER AND PUBLIC SEWERAGE SYSTEMS
HOWARD COUNTY HEALTH DEPARTMENT
DATE: 7-13-70

APPROVED FOR PUBLIC WATER AND PUBLIC SEWERAGE, STORM DRAINAGE SYSTEMS AND PUBLIC ROADS
HOWARD COUNTY DEPARTMENT OF PUBLIC WORKS
DATE: 7-6-70

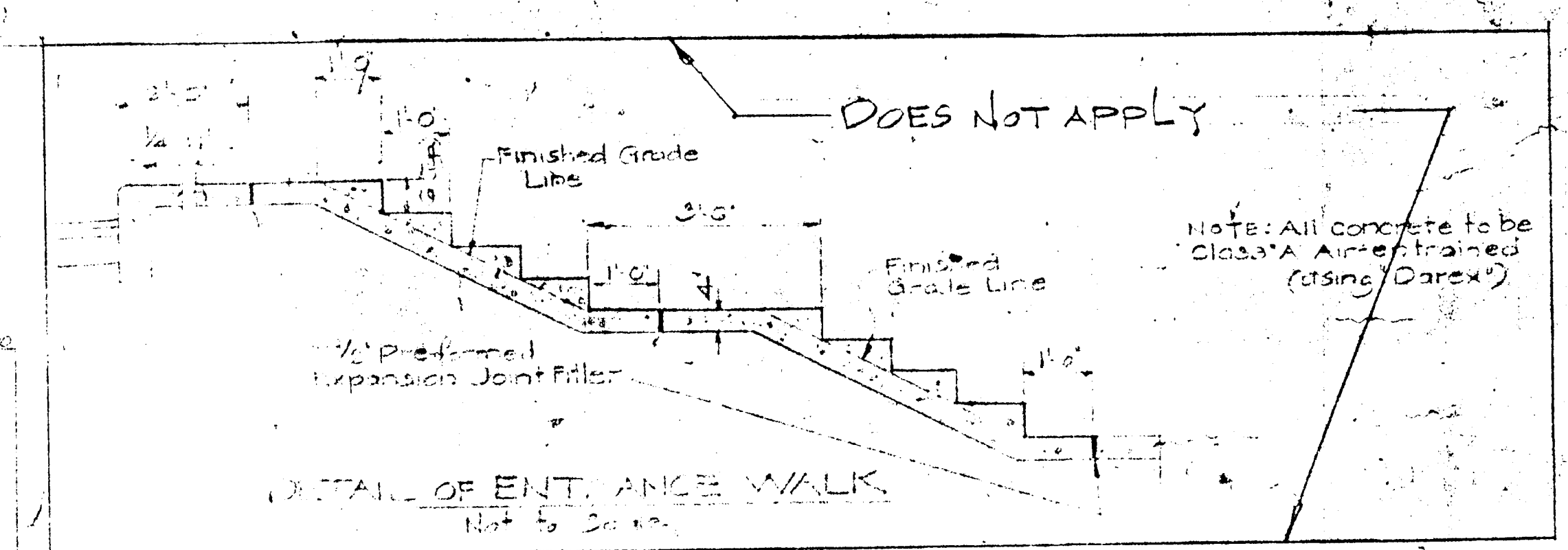
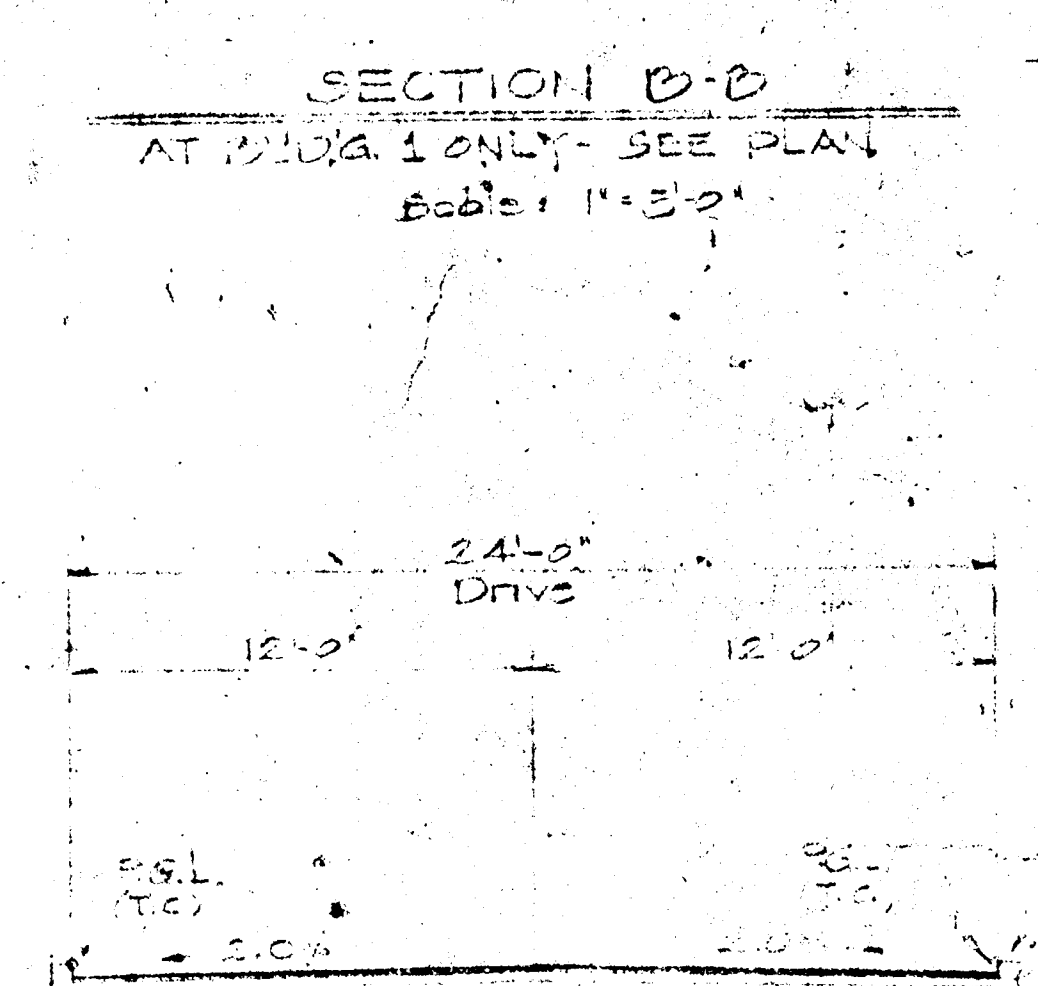
APPROVED HOWARD COUNTY OFFICE OF PLANNING AND ZONING
DATE: 2-16-70
DATE: 2-16-70
DATE: 2-16-70

MATZ CHILDS & ASSOC. ATES
1020 BERNARD BRIDGE RD.
BALTIMORE, MD. 21204

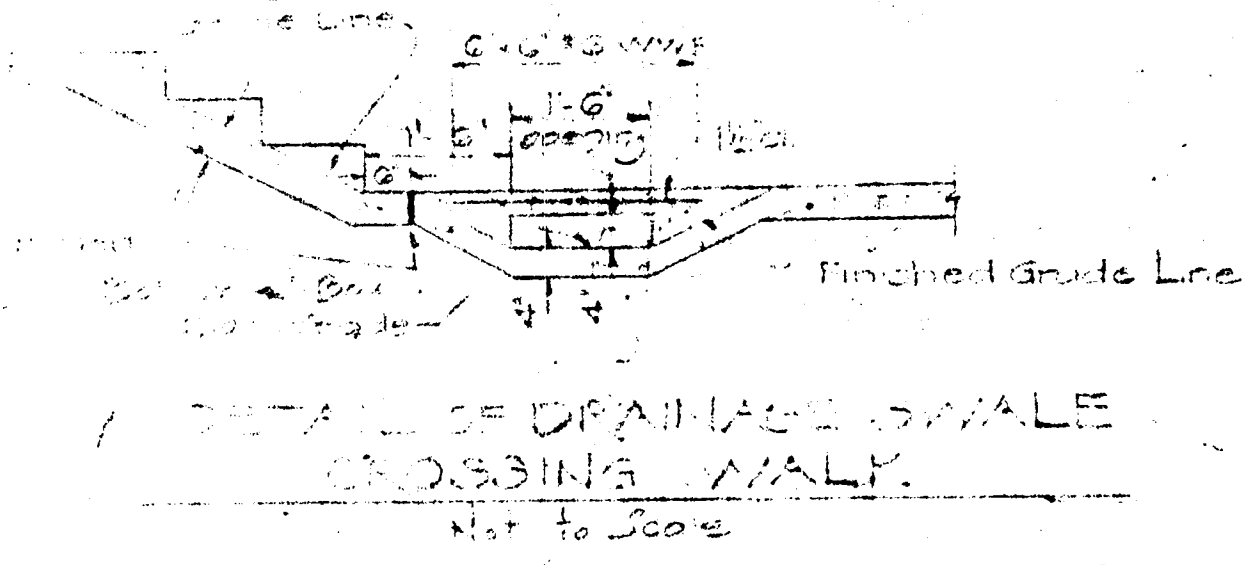
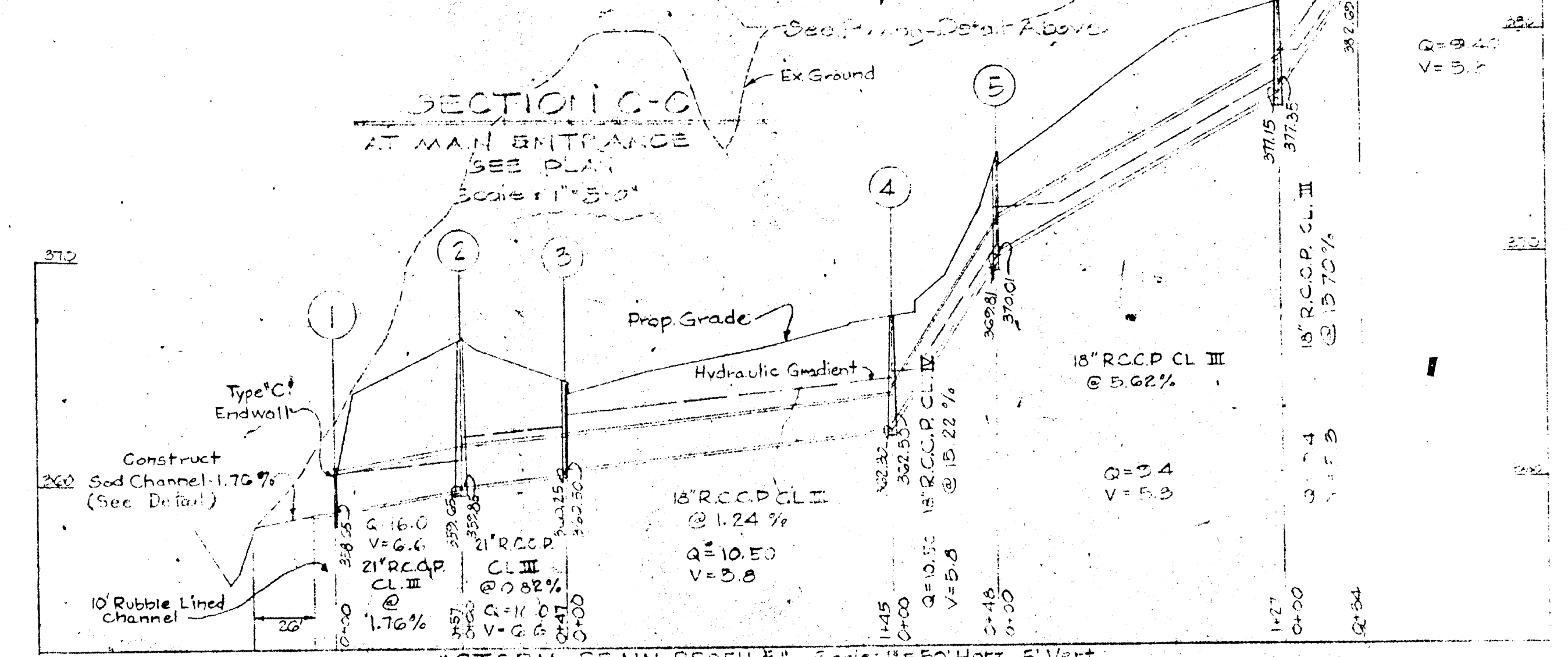
C.O.F.D. 1-3-17
S.D.P. 70-31



BITUMINOUS CONCRETE SURFACE	BAND C-3	FINAL PHASE
BITUMINOUS CONCRETE BINDER	BAND A-B	
BITUMINOUS CONCRETE BASE (THICKNESS TO BE DETERMINED)	BAND C-2 OR C-3	FIRST PHASE



APPROVED FOR THE BOARD OF PLANNING COMMISSION
 DATE 2-16-70
 APPROVED FOR THE BOARD OF PLANNING COMMISSION
 DATE 2-16-70
 APPROVED FOR THE BOARD OF PLANNING COMMISSION
 DATE 2-6-70



No.	TYPE	TOP EL.	REMARKS
1	Type C Endwall	-	Std. Dwg. D-52
2	Manhole	367.0	Std. Dwg. D-103
3	Class H Inlet	364.5	Std. Dwg. D-76
4	Manhole	367.5	Std. Dwg. D-103
5	Class H Inlet	374.5	Std. Dwg. D-76
6	Manhole	382.2	Std. Dwg. D-103
7	Manhole	388.4	Std. Dwg. D-103

SITE DEVELOPMENT PLAN

STORM DRAIN PROFILE, TYPICAL CROSS SECTIONS & DETAILS

Rev No	Rev Date	Revision Description
1	11-5-69	Storm drain data.
2	12-3-69	Walk Detail per County comments.
3	1-27-70	Per County Comments.

COLUMBIA
 MARYLAND
 HOWARD RESEARCH AND DEVELOPMENT CORP.
 THE VILLAGE OF CROSS KEYS - BALTIMORE, MARYLAND 21210

PROJECT AREA: VILLAGE OF OAKLAND MILLS
 SEC. 2 STEVENS FOREST AREA 3

PROJECT TITLE: OAKLAND MILLS
 PARCEL E APARTMENTS

Des By: P.S.S. Scale AS SHOWN Dwg No.
 Dwn By: M.C. Date: 11/5/69 C.C.F. No.
 Chk By: P.S.S. Approved

APPROVED
 BOARD OF PLANNING COMMISSION
 OF HOWARD COUNTY
 DATE JUN 17 1970 JUN 17 1970

MARY CITY ENGINEERS

C-1b