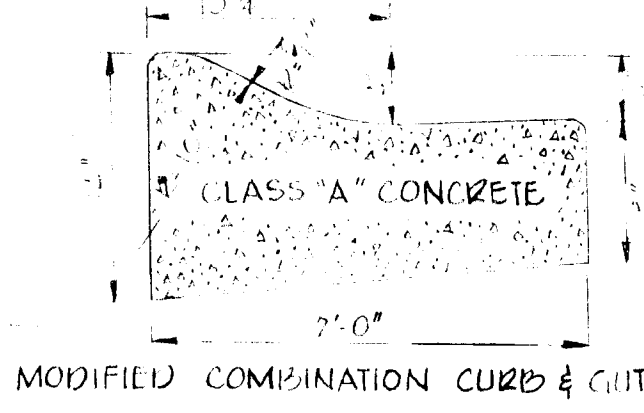
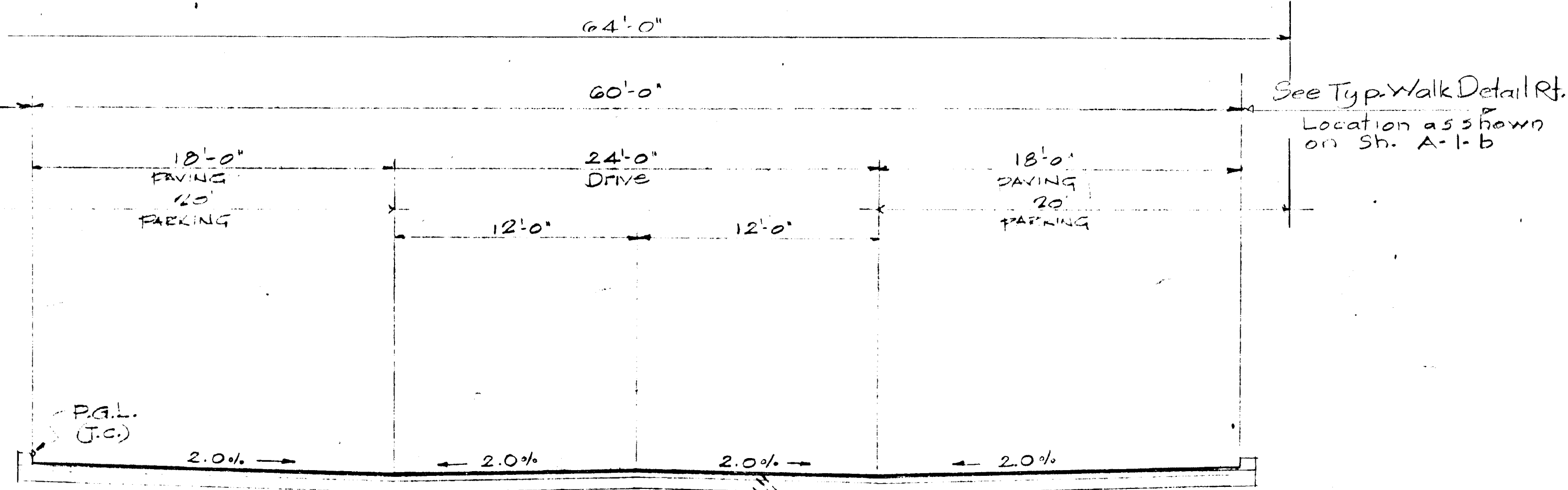


See Typ. Walk Detail Pt.  
Location as shown on Sh. A-1-b



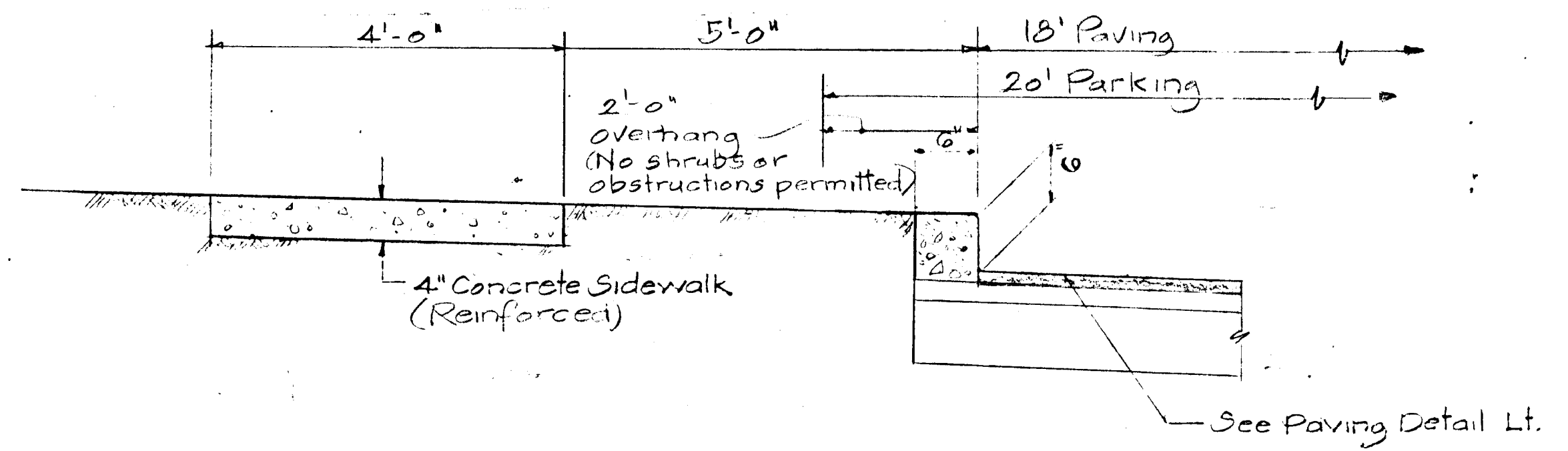
MODIFIED COMBINATION CURB & GUTTER



SECTION A-A  
SEE PLAN FOR LOCATIONS  
Scale: 1"=5'-0"

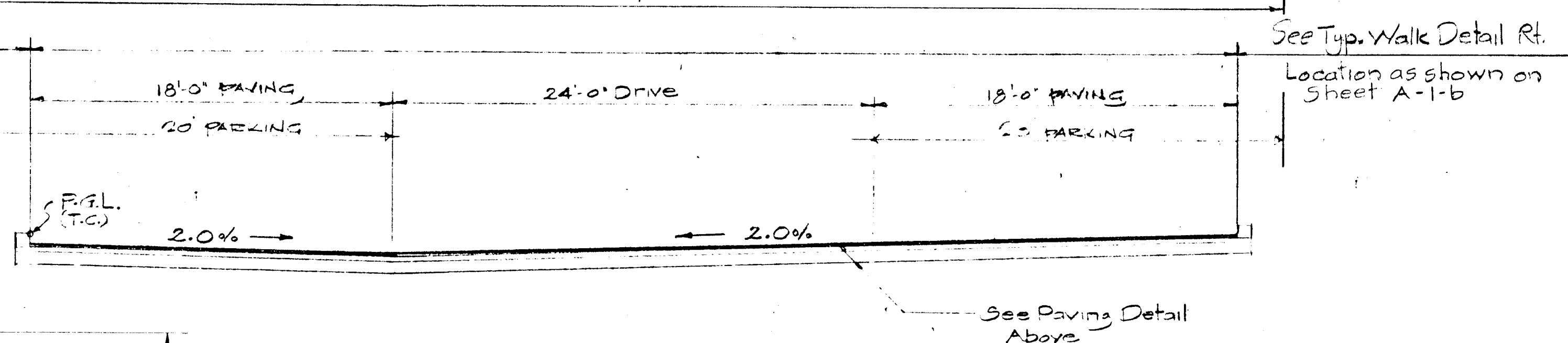
1 1/2" M.S.P.C. Spec. 'B' Bit. Conc. Surf. Course (Band P-1-G) Stone  
2" M.S.P.C. Spec. 'B' Bit. Conc. Base Course (Band P-2) Stone  
5" CR-467 Stone Aggregate (3" Comp. Depth)

See Typ. Walk Detail Rt.  
Location as shown on Sh. A-1-b



TYPICAL WALK DETAIL  
No Scale

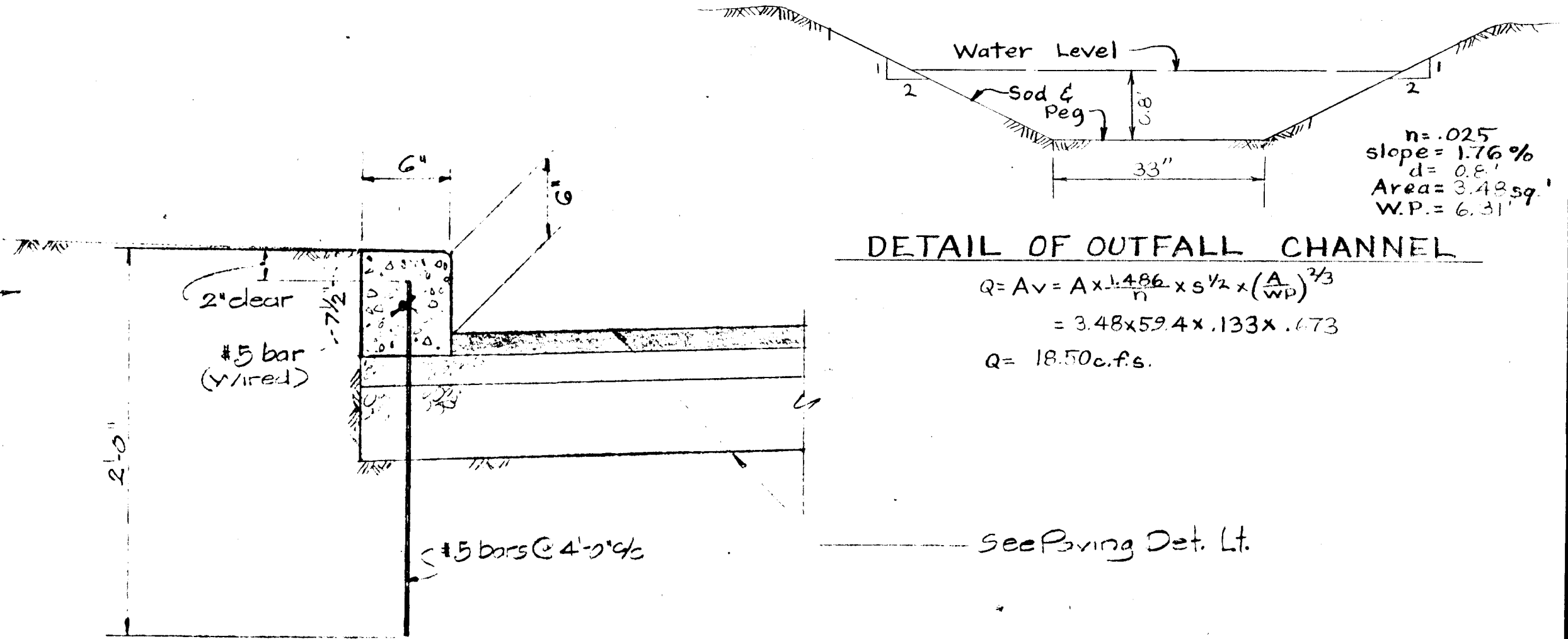
See Typ. Walk Det. Rt.  
Location as shown on Sh. A-1-b



SECTION B-B  
AT BLDG. 1 ONLY - SEE PLAN  
Scale: 1"=5'-0"

See Paving Detail Above

See Typ. Walk Detail Rt.  
Location as shown on Sheet A-1-b



DETAIL OF OUTFALL CHANNEL

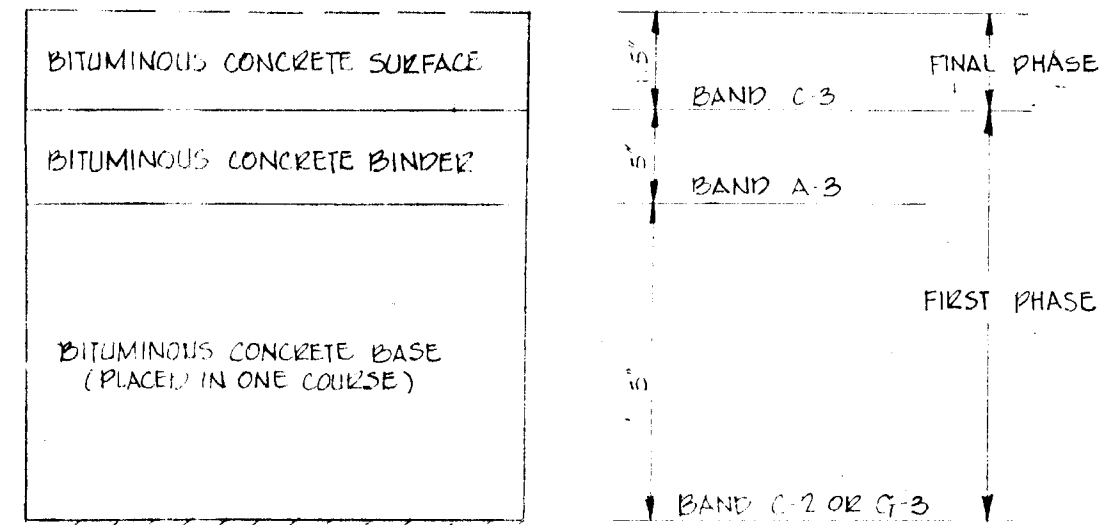
$$Q = Av = A \times \frac{1.486}{n} \times s^{1/2} \times \left(\frac{A}{WP}\right)^{2/3}$$

$$= 3.48 \times 59.4 \times .133 \times .673$$

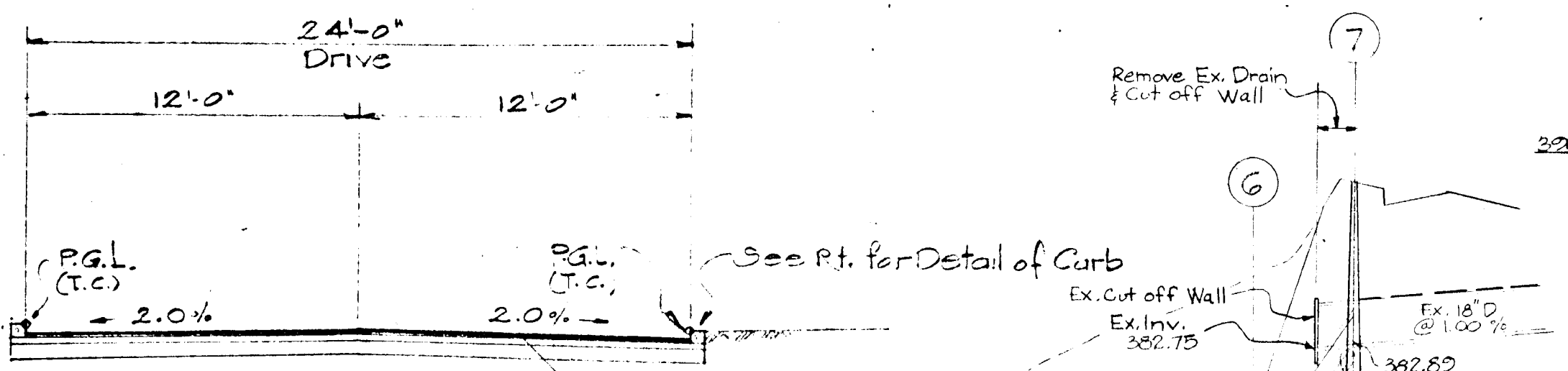
$$Q = 18.50 \text{ cfs.}$$

See Paving Det. Lt.

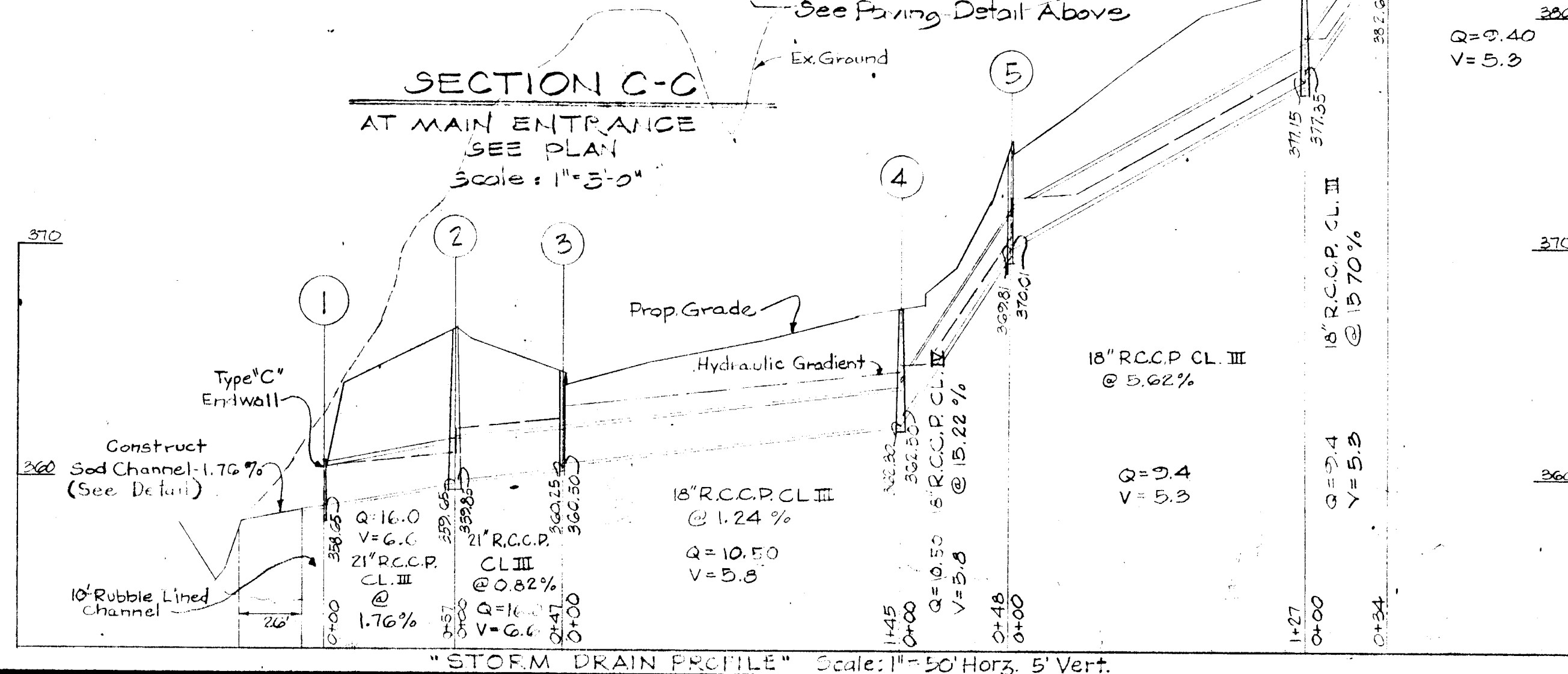
CLEARING & GRADING: ARTICLE C-1  
SURFHADE: ARTICLE C-2  
BASE COURSE: ARTICLE C-31 OR C-33  
BINDER COURSE: ARTICLE C-31  
SURFACE COURSE: ARTICLE C-31



APPROVED SITE PLAN  
HOWARD COUNTY PLANNING COMMISSION  
DATE 2-16-70  
PLANNING DIRECTOR  
APPROVED: HOWARD CO. PLANNING COMMISSION  
CHIEF ENGINEER N. Clawson 2-16-70  
APPROVED HOWARD COUNTY ROADS DEPT.  
BRUCE W. WALKER 2-6-70  
ROADS ENGINEER  
APPROVED HOWARD COUNTY METROPOLITAN COMM.  
CHIEF ENGINEER  
APPROVED HOWARD CO. HEALTH DEPARTMENT  
PUBLIC WORKS & SEWER  
F. H. HARRIS 2-13-70  
COUNTY HEALTH OFFICER

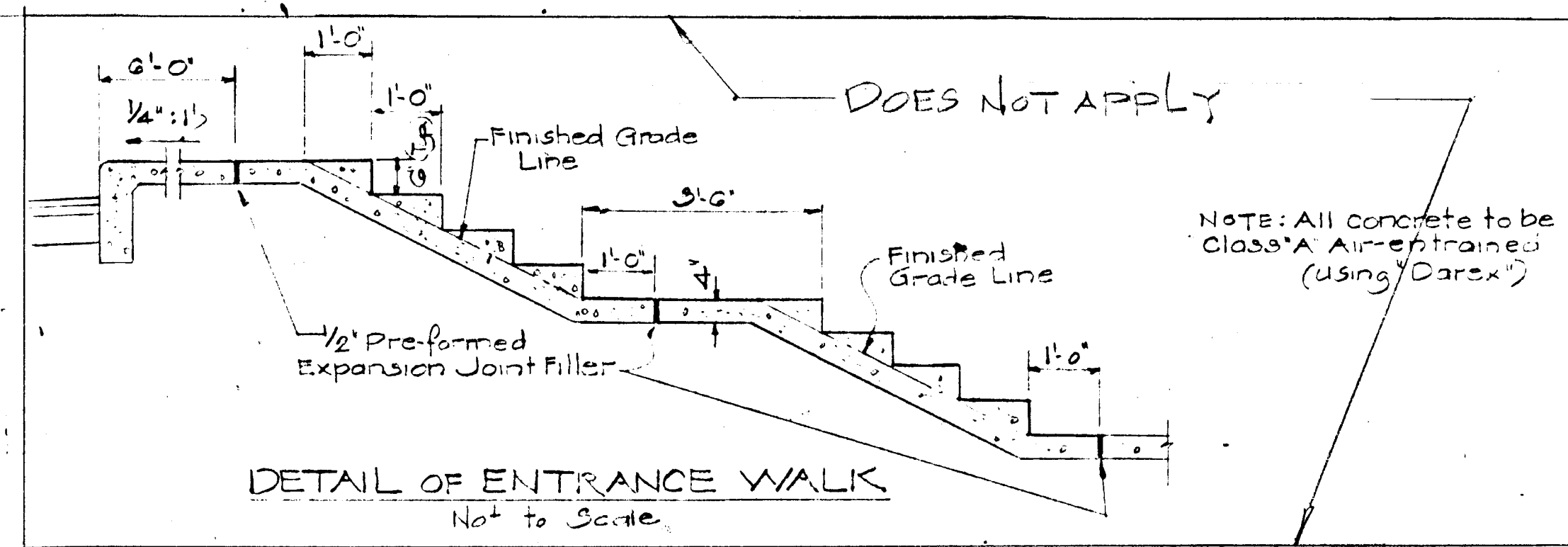


SECTION C-C  
AT MAIN ENTRANCE  
SEE PLAN  
Scale: 1"=3'-0"

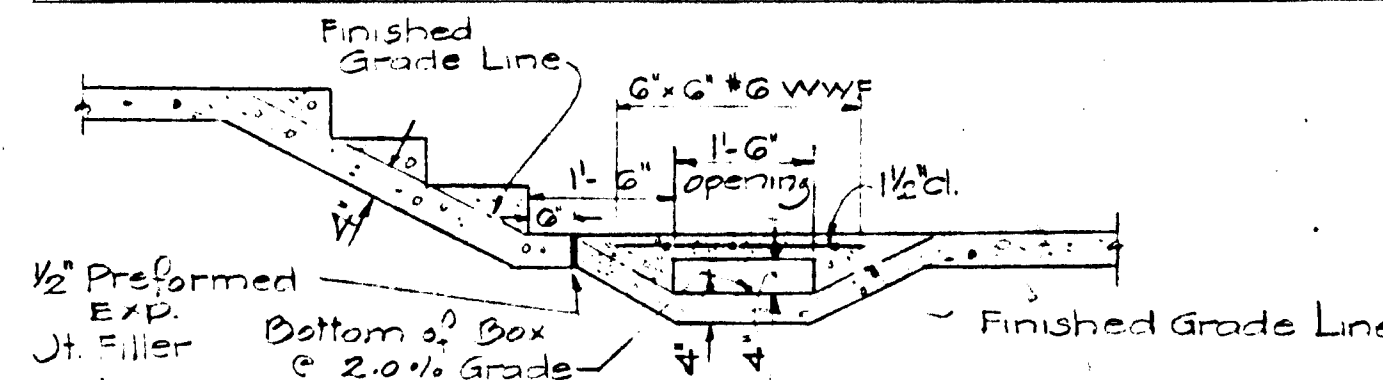


"STORM DRAIN PROFILE" Scale: 1"=50' Horiz., 5' Vert.

TYPICAL CURB SECTION  
Scale: 1/2"=1'-0"



DETAIL OF ENTRANCE WALK  
No Scale



DETAIL OF DRAINAGE SWALE  
CROSSING WALK  
Not to Scale

STRUCTURE SCHEDULE		
No.	TYPE	TOP EL. REMARKS
1	Type 'C' Endwall	Std. Dwg. D-52
2	Manhole	367.0 Std. Dwg. D-103
3	Class 'H' Inlet	364.5 Std. Dwg. D-76
4	Manhole	367.5 Std. Dwg. D-103
5	Class 'H' Inlet	374.5 Std. Dwg. D-76
6	Manhole	382.2 Std. Dwg. D-103
7	Manhole	388.4 Std. Dwg. D-103

SITE DEVELOPMENT PLAN

STORM DRAIN PROFILE, TYPICAL CROSS SECTIONS & DETAILS.

Rev	Date	Rev No	Revision Description
1-27-69	2	1	For County Comments
12-3-69	2	2	Walk Detail per County Comments
11-5-69	1	1	Storm drain data.

COLUMBIA MARYLAND

OWNER AND DEVELOPER  
HOWARD RESEARCH AND DEVELOPMENT CORP.  
THE VILLAGE OF CROSS KEYS - BALTIMORE, MARYLAND 2120

PROJECT AREA  
VILLAGE OF OAKLAND MILLS  
SEC. 2 STEVENS FOREST AREA 3

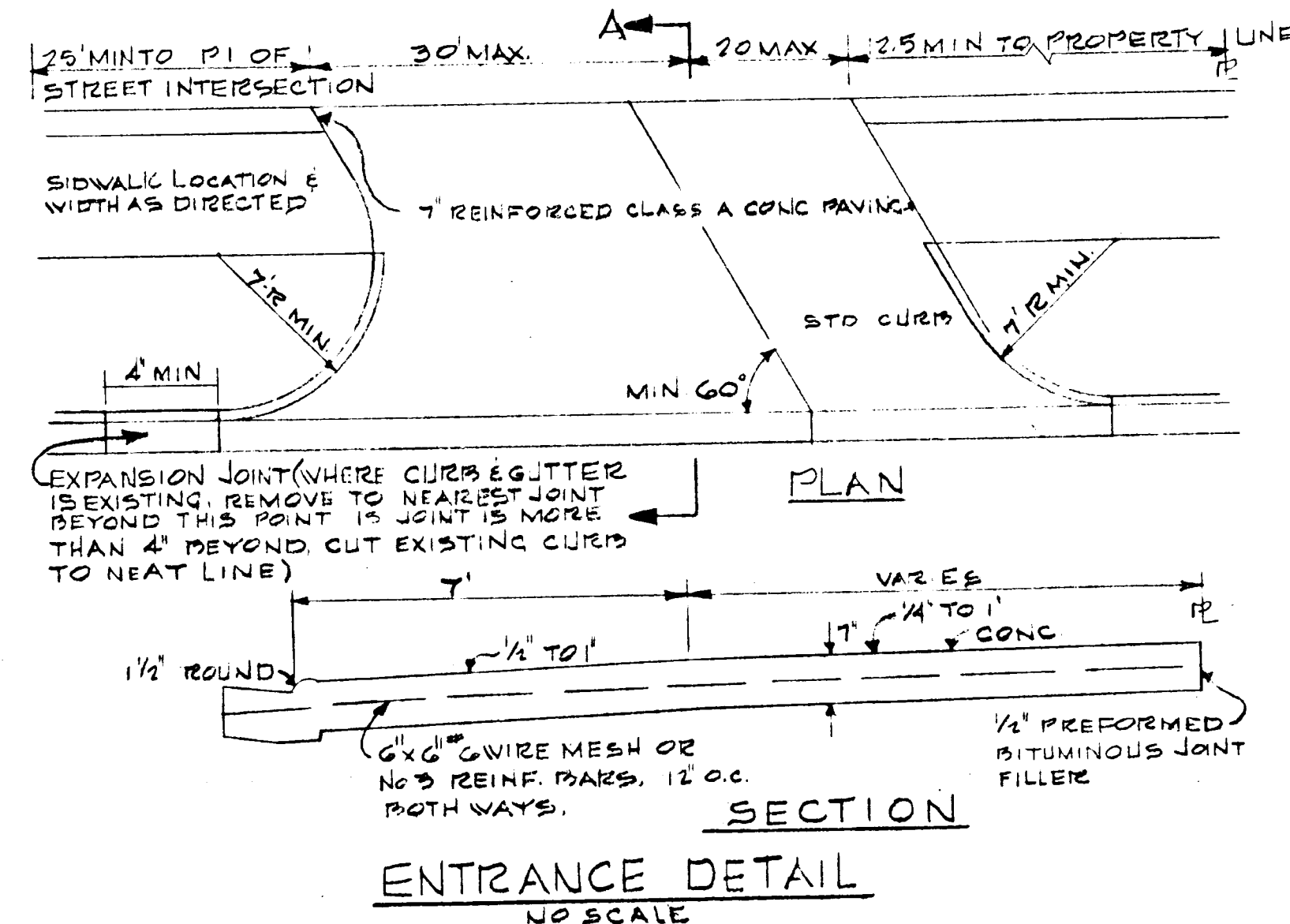
PROJECT TITLE  
PARCEL E OAKLAND MILLS APARTMENTS

Des By P.S.S.	Scale AS SHOWN	Dwg No
Drn By Y.C.	Date 11/5/69	C.C.F. No
Chk By P.S.S.	Approved	

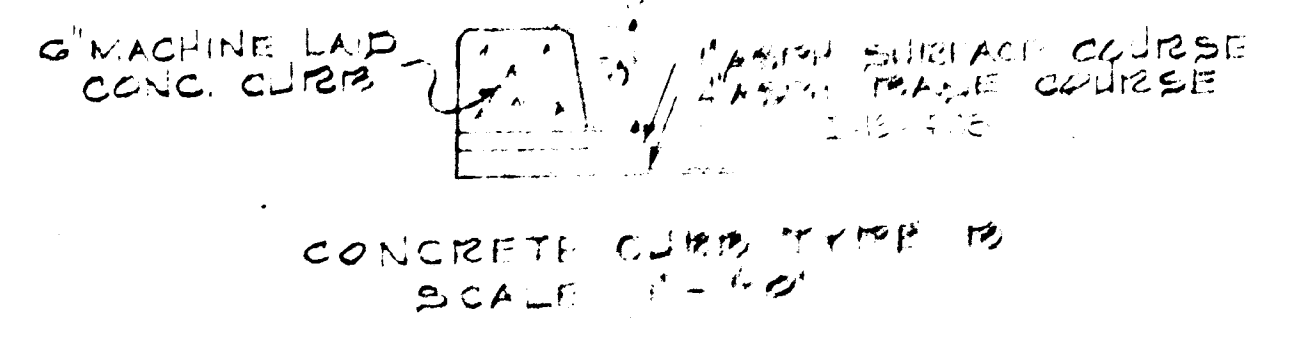
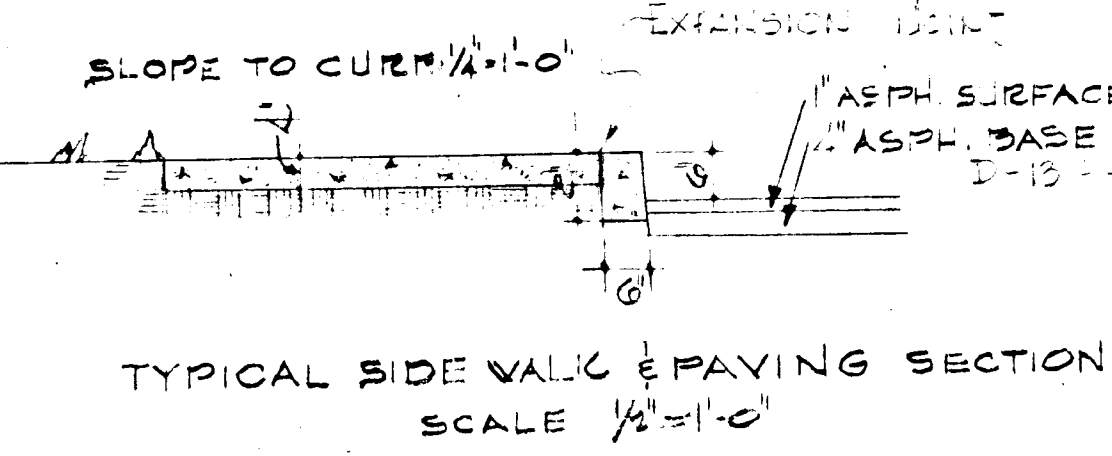
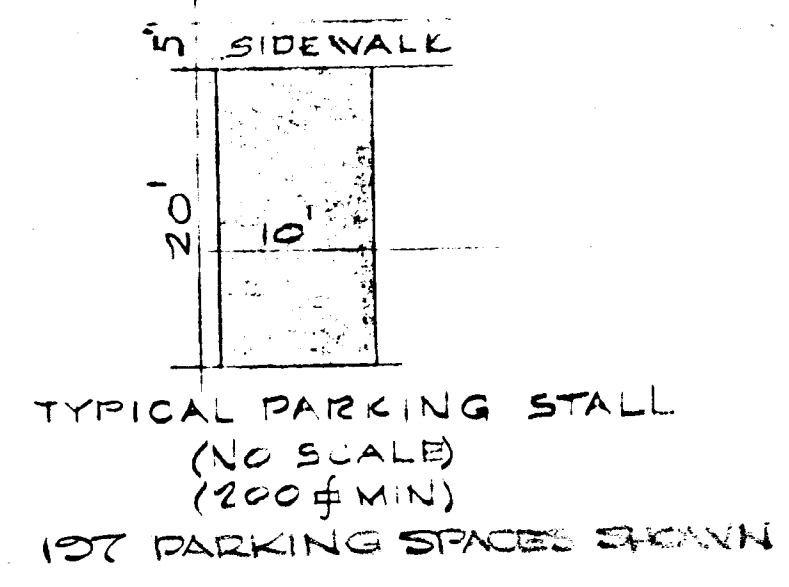
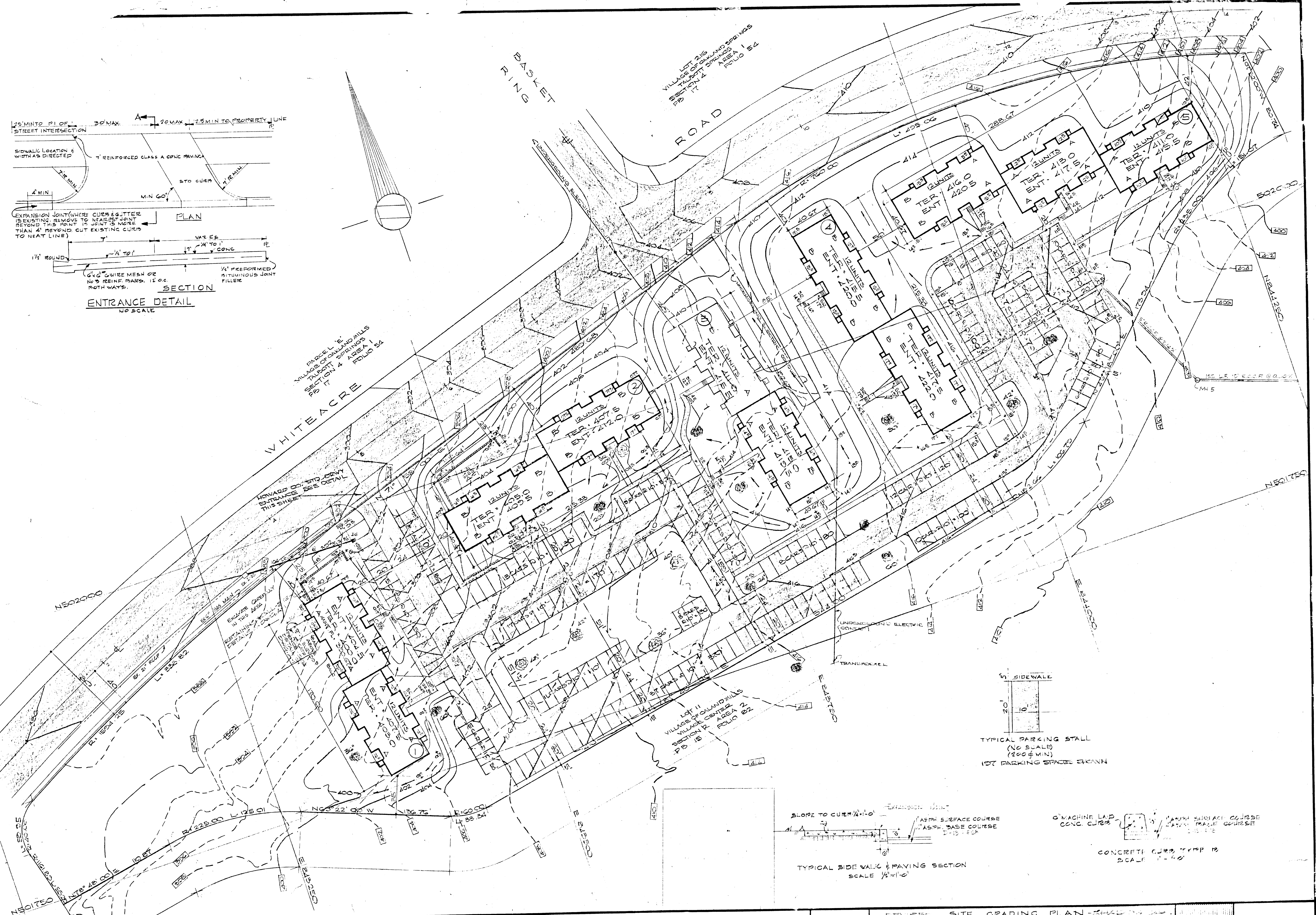


DATE JAN 14 1970  
MATZ, CHILDS & ASSOCIATES  
1020 CROMWELL BRIDGE ROAD  
BALTIMORE, MARYLAND 21204  
DRAWN BY P.S.S. TRACED BY W.W.S. CHECKED BY P.S.S.





PARCEL 12  
VILLAGE OF OAKLAND MILLS  
VILLAGE CENTER  
SECTION 2, AREA 2  
PLAT BOOK 15 FOLIO B2



**COLLINS & KRONSTADT**  
**LEAHY · HOGAN · COLLINS**  
architects · planners · engineers  
1111 spring street · silver spring, maryland

REVERSE SITE GRADING PLAN - FINAL  
VILLAGE OF OAKLAND MILLS - VILLAGE CENTER  
LOT 12, SECTION 2, AREA 2 PLAT BOOK 15 FOLIO B2  
FINAL DEVELOPMENT PHASE SO P13 16 FOLIOS 39 TO 41 COLUMBIA, MD

**SG-2**  
1/8/71

SDP 77-91