

**GENERAL NOTES**  
**SITE ANALYSIS**

1. AREA OF SITE 7,324 AC.
2. PRESENT ZONING APARTMENTS
3. ALL SLOPES AND DISTURBED EARTH TO BE SOEDED OR SEEDED.
4. ALL DRIVES AND PARKING AREAS TO BE PRIVATELY OWNED, CONSTRUCTED, & MAINTAINED.

**UNIT COUNT**

5. NUMBER OF APARTMENTS PERMITTED 111
6. NUMBER OF APARTMENTS PROPOSED 104 (4.07 LU/AC)
  - a. TYPE "A" - 228 44 (40 sq. ft.)
  - b. TYPE "B" - 128 42 (40 sq. ft.)
  - c. TYPE "C" - 238 42 (60 sq. ft.)
  - d. TYPE "D" - 128 42 (60 sq. ft.)

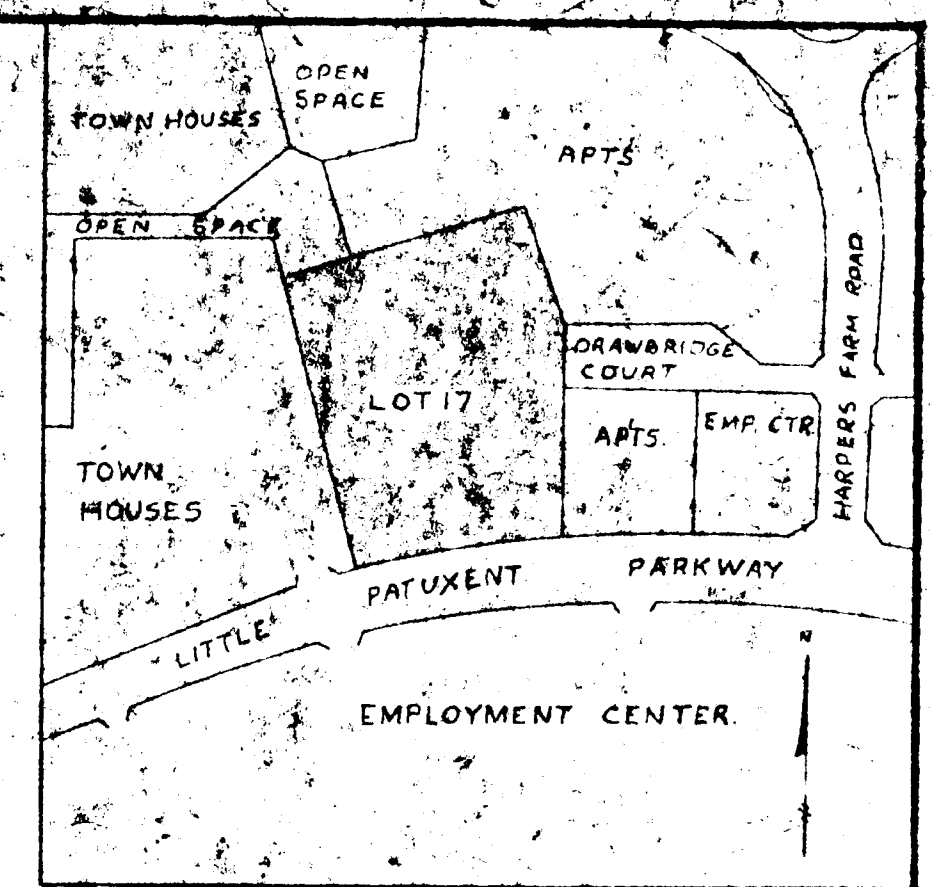
**LEGEND**

- WATER
- GAS
- ELECTRIC
- SEWARIY SEWER
- STORM DRAIN - (PROPOSED)
- SWITCHGEAR
- STREET LIGHT
- FIRE HYDRANT
- GAS VALVE
- WATER VALVE
- STORM DRAIN (EXIST)

**GENERAL NOTES**

1. TOPO TAKEN FROM EAST M.A.S. PREPARED FEBRUARY, 1965 BY MANSING AND SUBJECT TO FIELD VERIFICATION.
2. UTILITIES SHOWN ARE THOSE CLOSEST TO THE SITE AS OF THE DATE OF THIS SURVEY. IN CASES WHERE UTILITIES ARE NOT SHOWN, NO PRELIMINARY OR FINAL PLANS HAVE BEEN PREPARED.
3. THIS SURVEY SUBJECT TO REVISION AS MORE UP-TO-DATE INFORMATION IS AVAILABLE.

**Notes:**  
 For Profile of Storm Drain See Dwg. No. C-111



VICINITY MAP  
 SCALE: 1" = 400'

**Notes:**  
 For Profile of Storm Drain See Dwg. No. C-111

**THE FOLLOWING IS THE PROCEDURE OF HYDRATION USED ON THIS PROJECT:**

- 1 Ton Lime per acre - 400 # 2 1/2 - 10 1/2
- Phosphorus raked in 200 #/Ac. of seeds:
- 100# Kentucky Blue
- 50# Penn Linn Fescue
- 25# Ryegrass
- 25# Rye

**With Seed:**

- 4.00" 10-6-4
- 1 Ton Mulch (Straw)
- A-B-4 Emulsion Truck Coat

**The following areas shall receive Kentucky Blue Grass seed:**

- 1) 13' x 15' to parking area
- 2) 20' x 30' rear of bldgs.

**GENERAL NOTES**

1. TOPO TAKEN FROM EAST M.A.S. PREPARED FEBRUARY, 1965 BY MANSING AND SUBJECT TO FIELD VERIFICATION.
2. UTILITIES SHOWN ARE THOSE CLOSEST TO THE SITE AS OF THE DATE OF THIS SURVEY. IN CASES WHERE UTILITIES ARE NOT SHOWN, NO PRELIMINARY OR FINAL PLANS HAVE BEEN PREPARED.
3. THIS SURVEY SUBJECT TO REVISION AS MORE UP-TO-DATE INFORMATION IS AVAILABLE.

**SURVEYOR'S CERTIFICATE**

I HEREBY CERTIFY THAT THE DATA SHOWN HEREON IS TAKEN FROM THE MOST UP-TO-DATE INFORMATION AVAILABLE AND, TO THE BEST OF MY KNOWLEDGE, IS CORRECT.

*Barbara K. Hardy* DATE: 6/1/66

**DRAINAGE AREA MAP**

Rev Date	Rev No	Revision Description
12-5-60	2	Per County Comments
11-5-60	1	Storm drainage, park's spots

**COLUMBIA MARYLAND**

THE HOUSE COMPANY THE VILLAGE OF CROSSKEYS, BALTIMORE, MARYLAND 21210

PROJECT AREA: VILLAGE OF HARPER'S CHOICE SECTION 3 AREA 2 LOT 7

PROJECT TITLE: TILBURY WOODS II

Des By: P.S.S. Scale: Dwg No:  
 Drn By: W.W.P. Date: C.C.F. No:  
 Chk By: J.S. Approved:

HOWARD COUNTY SOIL CONSERVATION DISTRICT

This development plan is approved for soil erosion and sediment control by the Howard County Soil Conservation District.

Revised: *Richard V. Upton* District Conservationist Date: 10/1/66

Approved: *Richard V. Upton* District Conservationist Date: 10/1/66

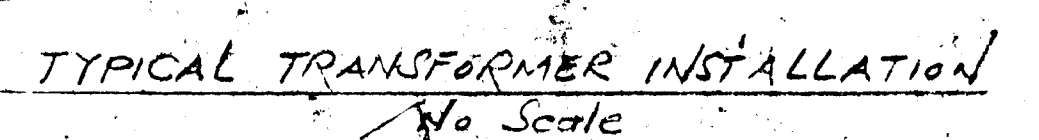
APPROVED HOWARD COUNTY OFFICE OF PLANNING AND ZONING

PLANNING DIRECTOR DATE  
 CHIEF ENGINEER, DIVISION OF LAND DEVELOPMENT DATE

APPROVED FOR PUBLIC WATER AND PUBLIC SEWERAGE, STORM DRAINAGE SYSTEMS AND PUBLIC ROADS, HOWARD COUNTY DEPARTMENT OF PUBLIC WORKS.

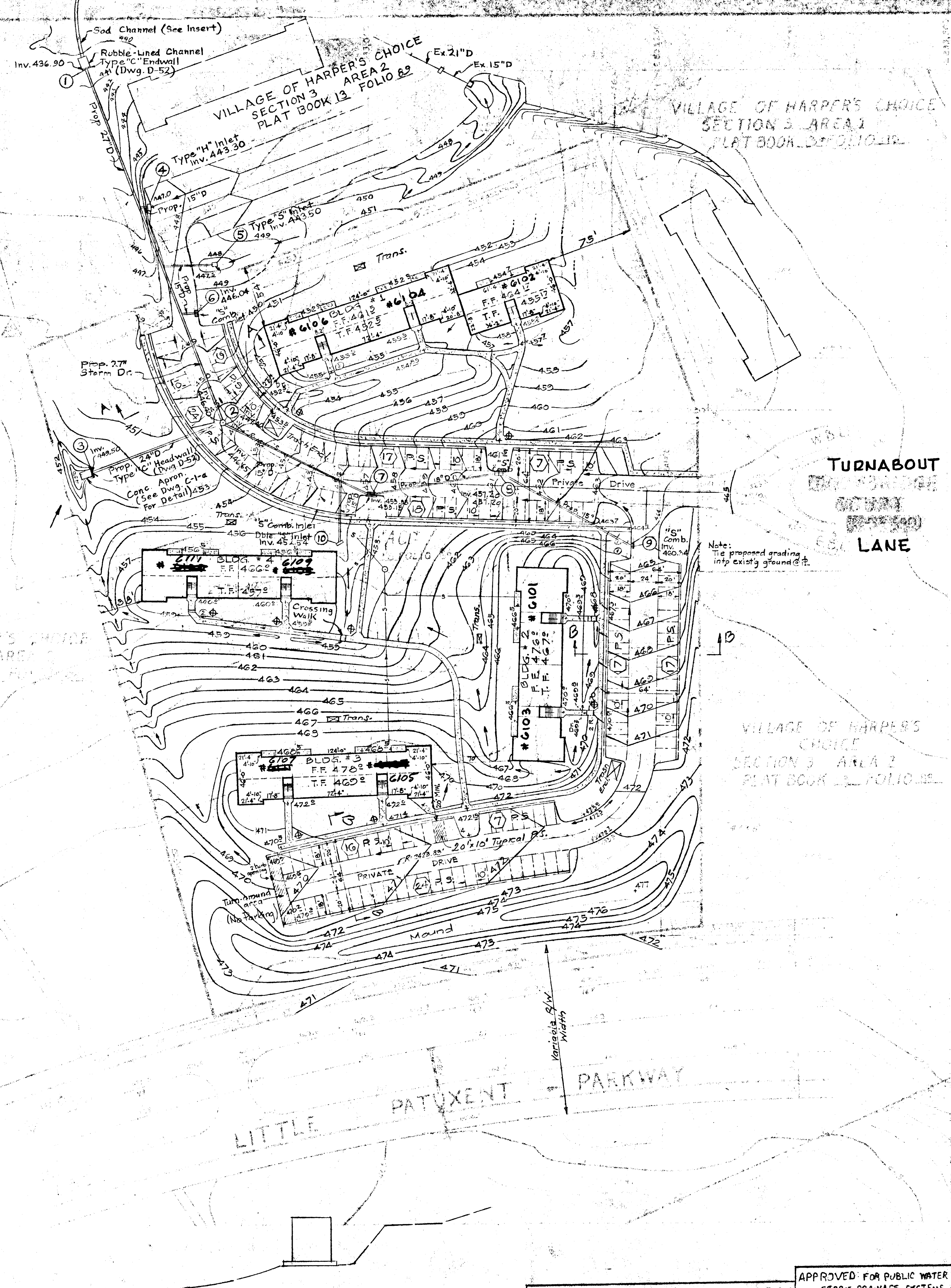
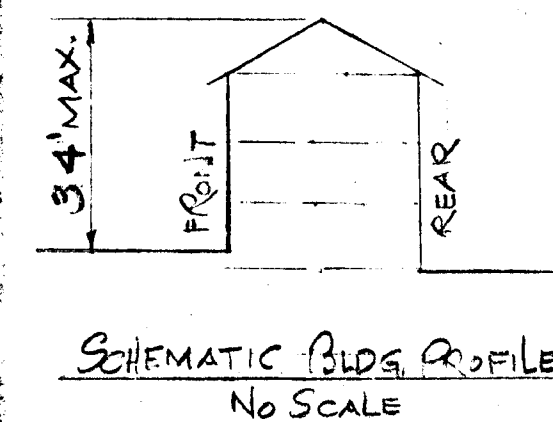
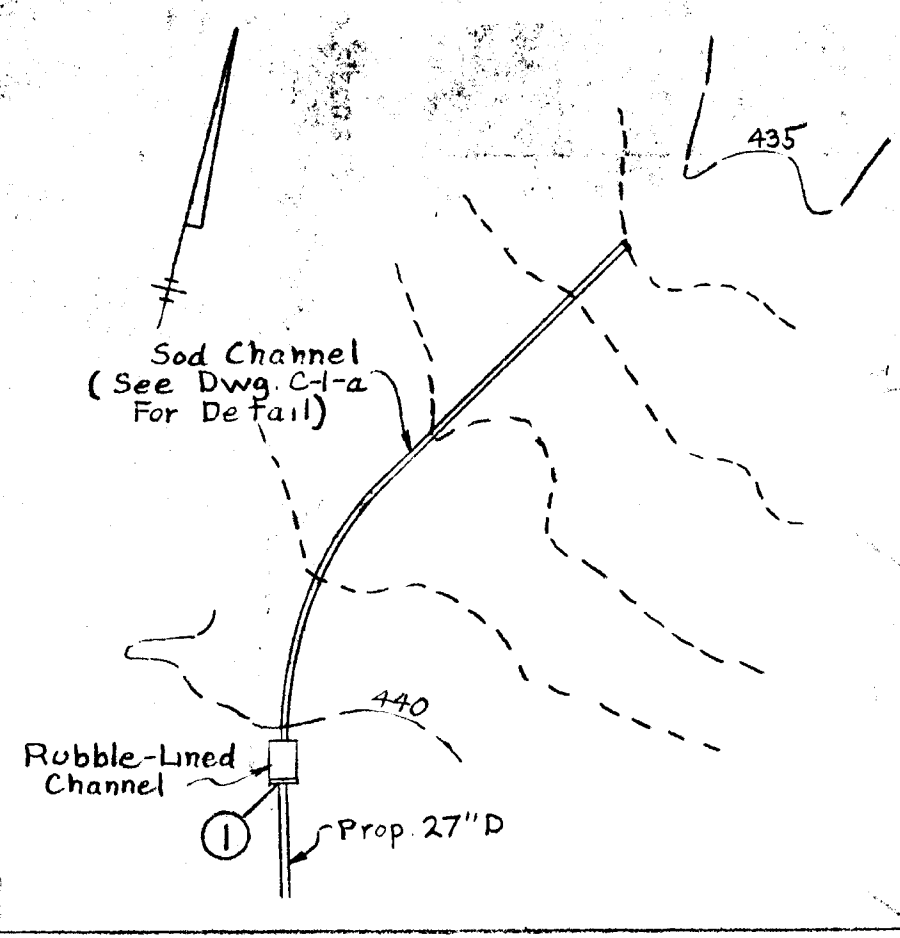
APPROVED FOR PUBLIC WATER AND PUBLIC SEWERAGE SYSTEMS, HOWARD COUNTY HEALTH DEPARTMENT.

COUNTY HEALTH OFFICER DATE DIRECTOR DATE



MATZ, CHILD & ASSOCIATES  
 1020 ORCHARD ROAD  
 BALTIMORE, MARYLAND 21210





**GENERAL NOTES**

**SITE ANALYSIS**

1. AREA OF SITE 7.354 Ac.
2. PRESENT ZONING APARTMENTS
3. ALL SLOPES AND DISTURBED EARTH TO BE SODDED OR SEEDED.
4. ALL DRIVES AND PARKING AREAS TO BE PRIVATELY OWNED, CONSTRUCTED, & MAINTAINED.

**UNIT COUNT**

5. NUMBER OF APARTMENTS PERMITTED 111
6. NUMBER OF APARTMENTS PROPOSED 104 (14.07 L.U./Ac.)
  - a. TYPE "A" - 2BR 44 (740 s.f. net)
  - b. TYPE "B" - 1BR 42 (600 s.f. net)
  - c. TYPE "C" - 2BR+D 9 (870 s.f. net)
  - d. TYPE "D" - 1BR+D 9 (732 s.f. net)
7. TOTAL BUILDING AREA 29,106 s.f.
8. BUILDING COVERAGE 9.04%
9. NUMBER OF PARK'G SPACES REQ'D. 156
10. NUMBER OF PARK'G SPACES PROPOSED 156  
NOTE: 10'x20' PARK'G SPACE INCLUDES 3' OVERHANGS  
BETWEEN SIDEWALK & CURB.

**VEHICULAR INGRESS AND EGRESS TO L.P.R. IS RESTRICTED**

**LEGEND**

- ⊕ Mushroom Light
- ⊠ Trash Enclosure
- ⊞ Transformer (See detail below)

Note:  
For Profile of Storm Drain  
See Dwg. No. C-1-a

**APPROVED**  
PLANNING BOARD  
OF HOWARD COUNTY

DATE **NOV 19 1969**  
*James H. Harris*



*Lester Matz*

The following is the procedure of hydroseeding used on this project:  
1 Ton Lime per acre - 400 # of 5-10-5 & phosphorus raked in 200 #/Ac. of seed:  
100# Kentucky Blue  
50# Penn Lawn Fescue  
25# Rye  
25# Redtop  
with Seed:  
400# 10-6-4  
1 Ton Mulch (Straw)  
A-E-4 Emulsion Tack Coat

The following areas shall receive Kentucky Blue Grass Sod.  
1) Bldgs. to parking area  
2) 20'-30' rear of bldgs.

**SITE DEVELOPMENT PLAN**

1-23-70	3	Storm Drain Layout
12-3-69	2	Per County Comments
11-5-69	1	Storm drainage, park'g spa's

**TILBURY WOODS II**

P.S. T 74-851  
W.W.B. Oct. 20, 1969  
P.S. 2  
**A-1-a**

**MATZ, CHILDS & ASSOCIATES**  
1020 OROMWELL BRIDGE ROAD  
BALTIMORE, MARYLAND 21204  
JOB NO. DRAWN BY TRACED BY CHECKED BY  
00166 P.S.B. W.W.B. P.S.B.

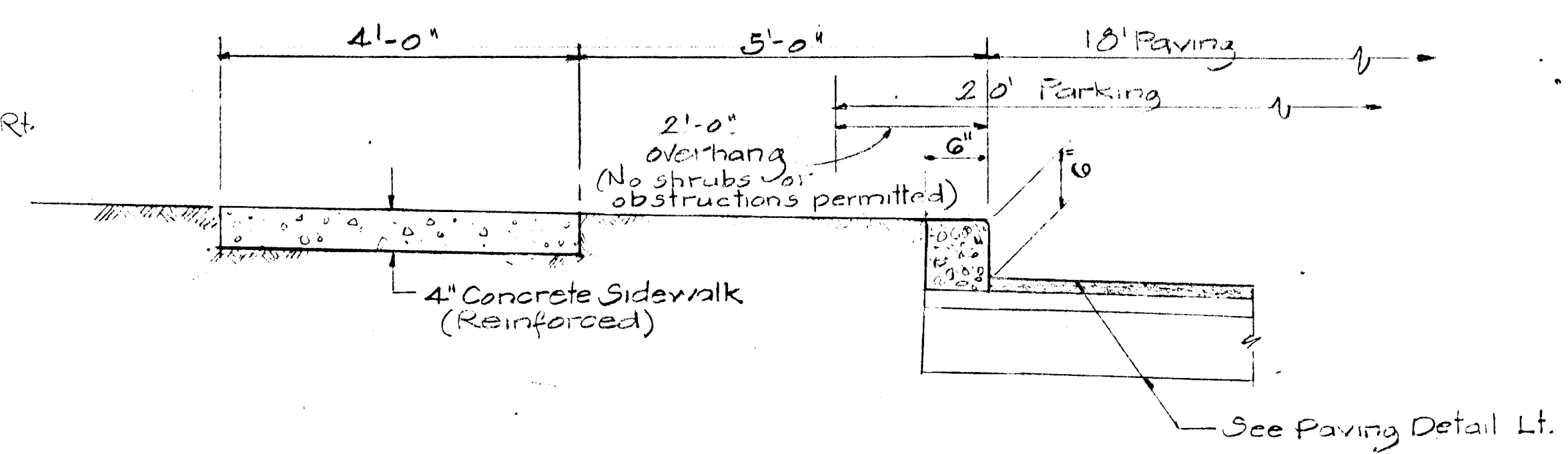
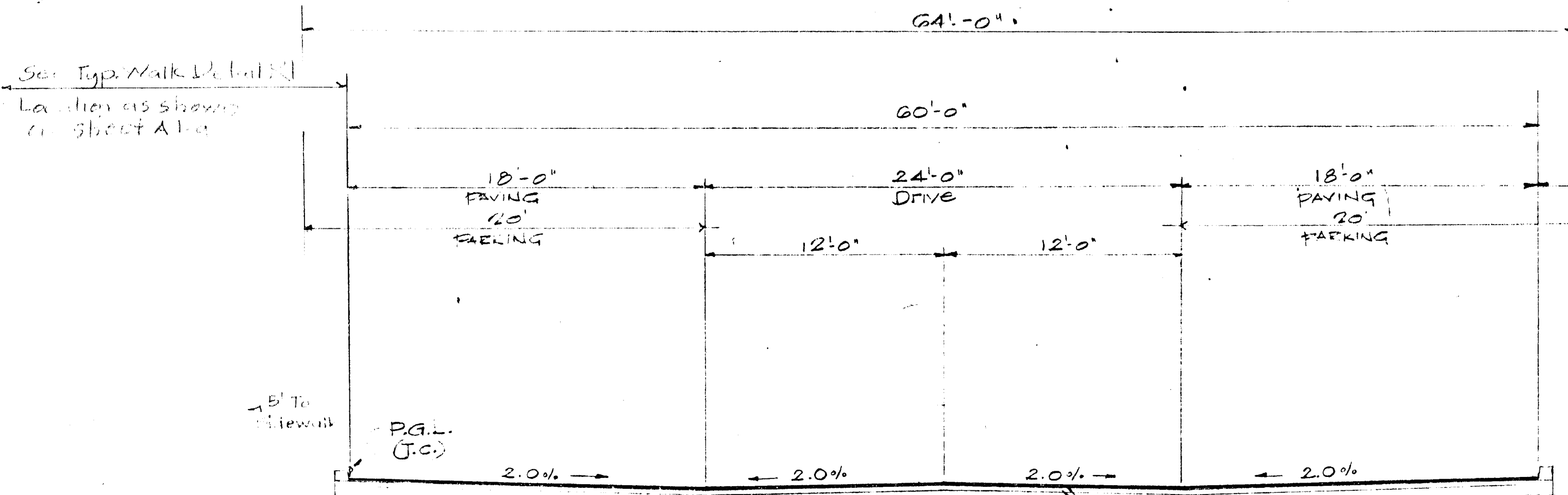
TYPICAL TRANSFORMER INSTALLATION  
No Scale

APPROVED FOR PUBLIC WATER AND PUBLIC SEWERAGE SYSTEMS, HOWARD COUNTY HEALTH DEPARTMENT.  
*Geo. K... 9/29/70*  
COUNTY HEALTH OFFICER DATE

APPROVED FOR PUBLIC WATER AND PUBLIC SEWERAGE, STORM DRAINAGE SYSTEMS AND PUBLIC ROADS, HOWARD COUNTY DEPARTMENT OF PUBLIC WORKS.  
*Hermon S. O'Neil 2-5-70*  
DIRECTOR per *B.H. McLeod* DATE

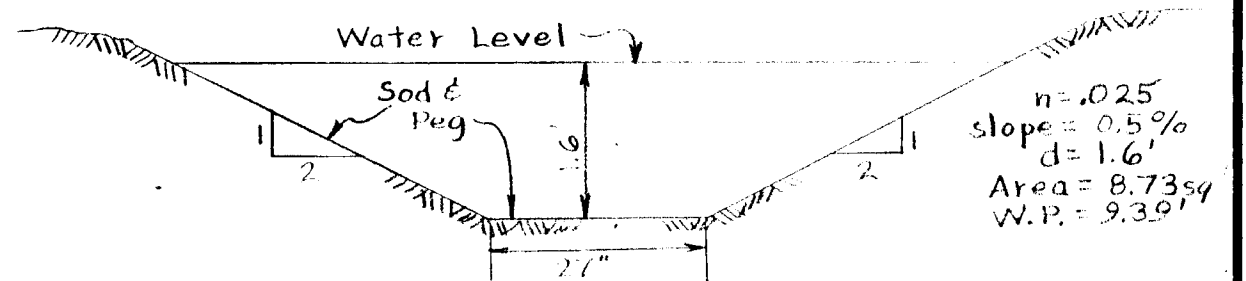
HOWARD SOIL CONSERVATION DISTRICT  
This development plan is approved for soil erosion and sediment control by the Howard Soil Conservation District.  
Reviewed: *Elmer J. Lane* 10-27-69  
District Conservationist Date  
Approved: *Robert V. Young* 10-27-69  
Howard Soil Conservation District Date  
APPROVED HOWARD COUNTY OFFICE OF PLANNING AND ZONING  
*James H. Harris* 2-10-70  
PLANNING ENGINEER DATE  
*John H. ...* 2-7-70  
PLANNING ENGINEER DATE



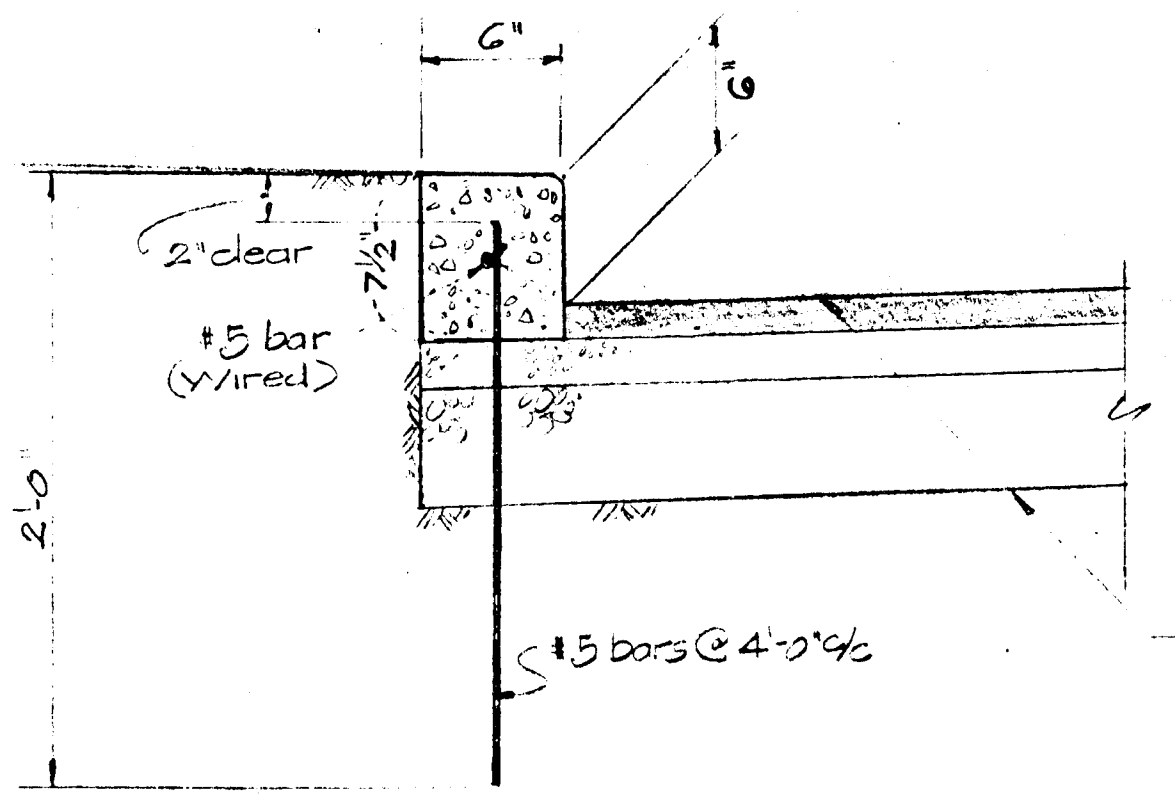
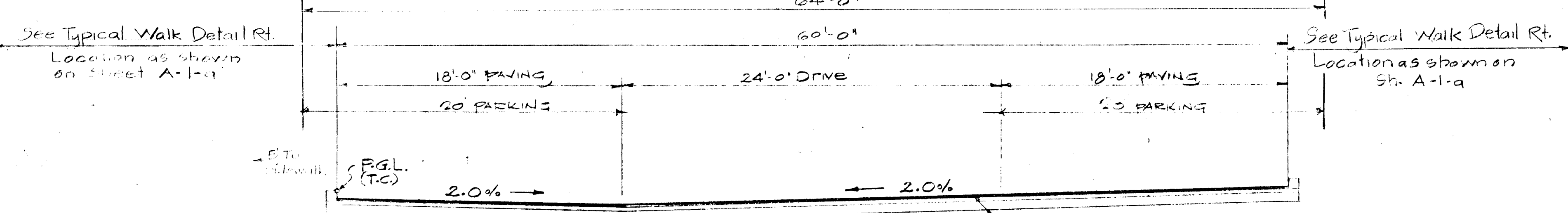


1 1/2" M.S.R.C. Spec. 'B' Bit. Conc. Surf. Course (Sand P-1-S1) Stone  
 2" M.S.R.C. Spec. 'B' Bit. Conc. Base Course (Sand P-2) Stone  
 5" CR-467 Stone Aggregate (3 Comp. Depth)

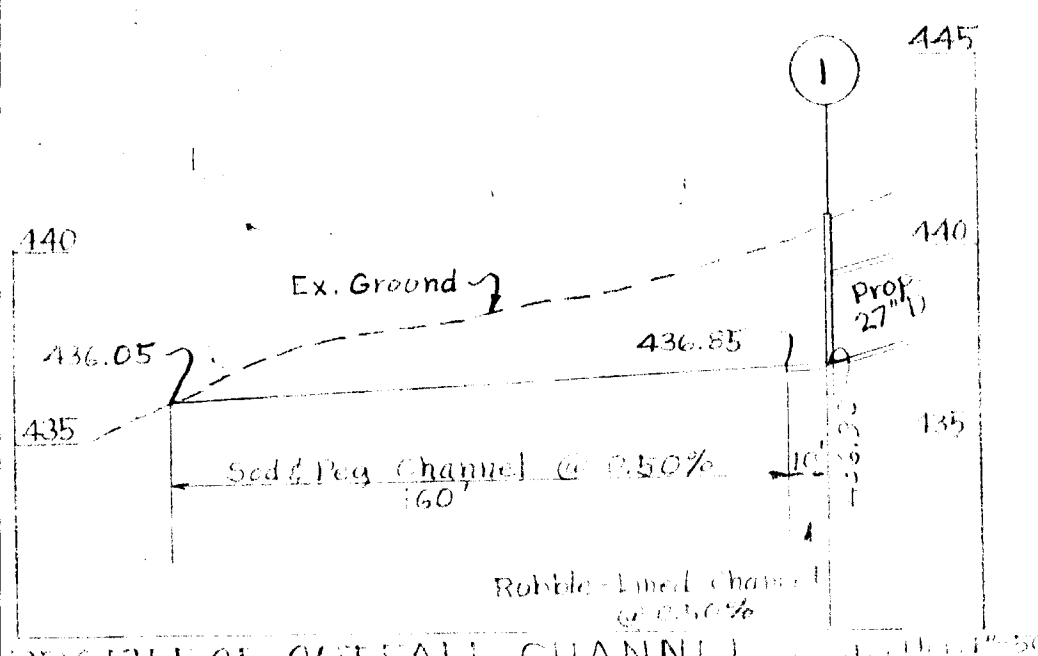
SECTION A-A  
 SEE PLAN FOR LOCATIONS  
 Scale: 1" = 5'-0"



DETAIL OF OUTFALL CHANNEL  
 $Q = AV = A \times 1.486 \times (s)^{1/2} \times (\frac{A}{WP})^{1/3}$   
 $= 8.73 \times 53.4 \times 0.074 \times 0.9528$   
 $Q = 36.6 \text{ c.f.s.}$

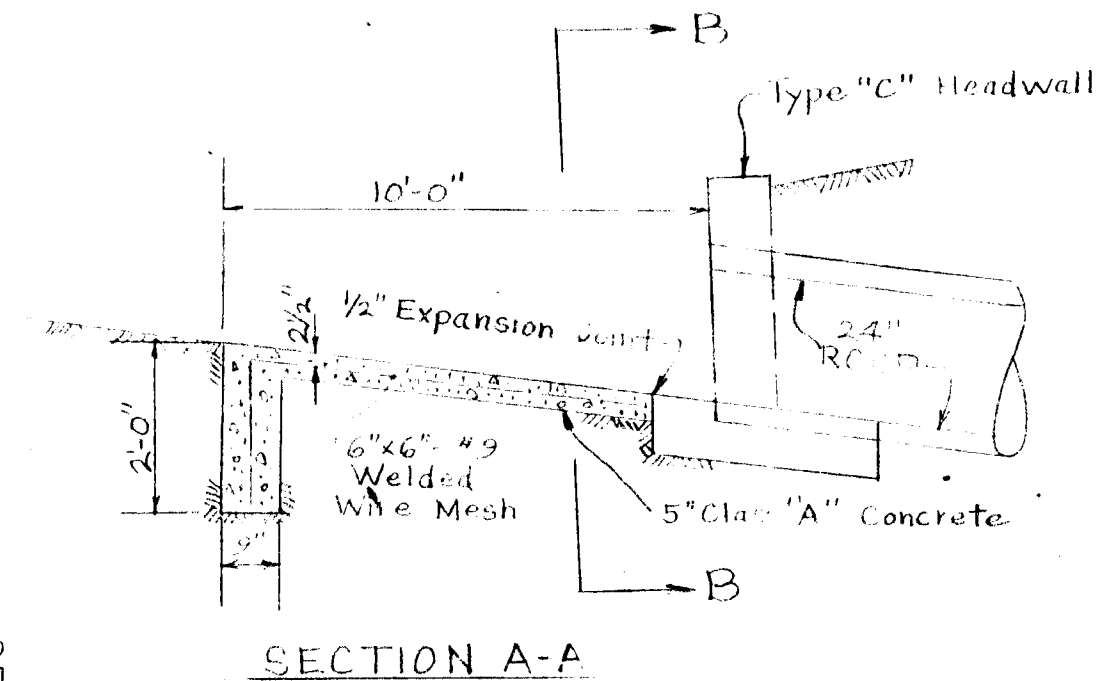


TYPICAL CURB SECTION  
 Scale: 1/2" = 1'-0"

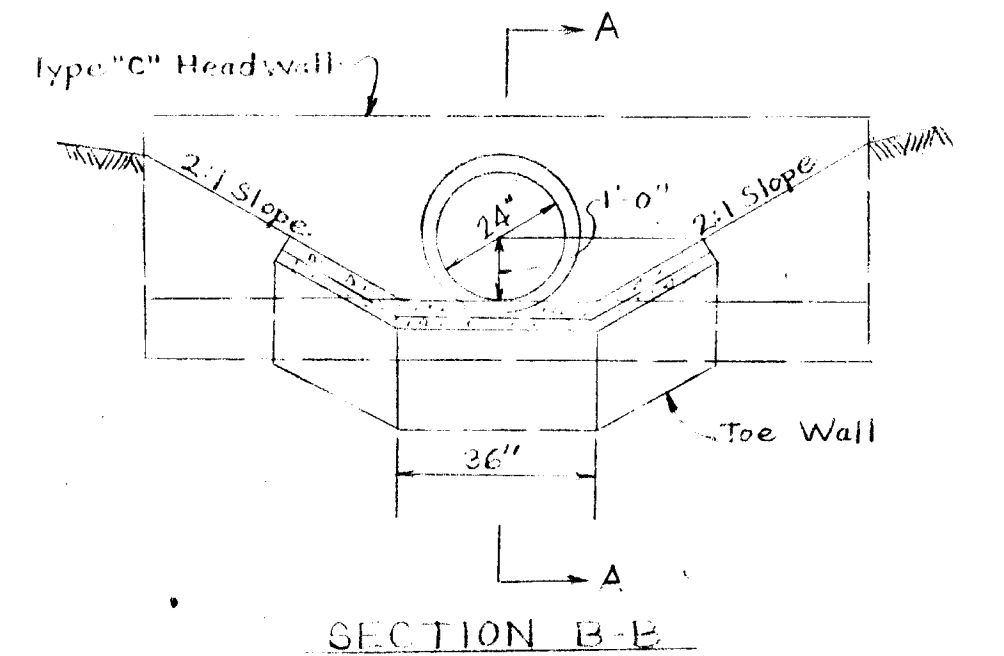


SECTION B-B  
 AT BLDG. 1 ONLY - SEE PLAN  
 Scale: 1" = 5'-0"

No.	TYPE	TOPELEV.	REMARKS
1	Type 'C' Endwall		Std. Dwg. D-52
2	Manhole	451.4	Std. Dwg. D-103
3	Type 'C' Endwall		Std. Dwg. D-52
4	"H" Inlet	447.0	Std. Dwg. D-76
5	"S" Comb	447.50	Std. Dwg. D-92
6	"S" Comb	448.20	Std. Dwg. D-92
7	"S" Comb	452.50	Std. Dwg. D-92
8	"S" Comb	461.40	Std. Dwg. D-92
9	"S" Comb	464.50	Std. Dwg. D-92
10	Dbl. "S" Grate	456.60	Std. Dwg. D-102

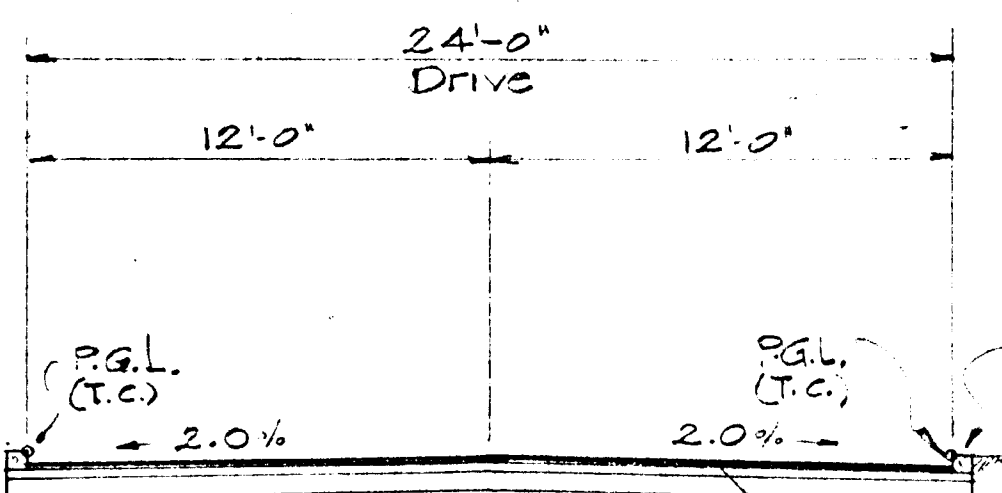


DETAIL OF CONCRETE APRON  
 Not to Scale

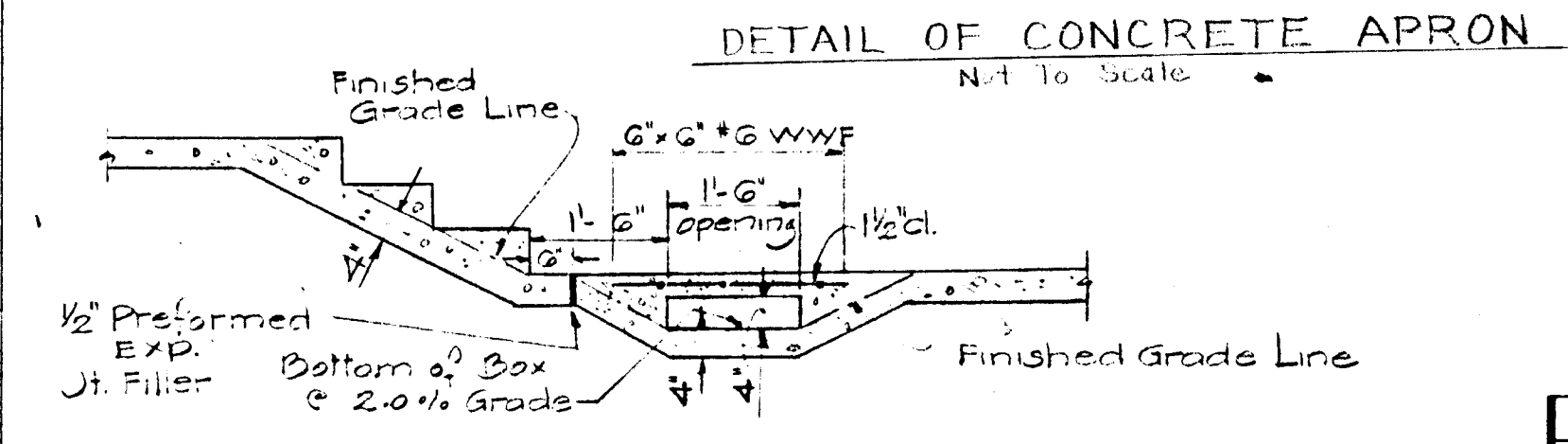


APPROVED  
 PLANNING BOARD  
 OF HOWARD COUNTY  
 DATE: NOV 19 1969  
 Thomas J. Harris

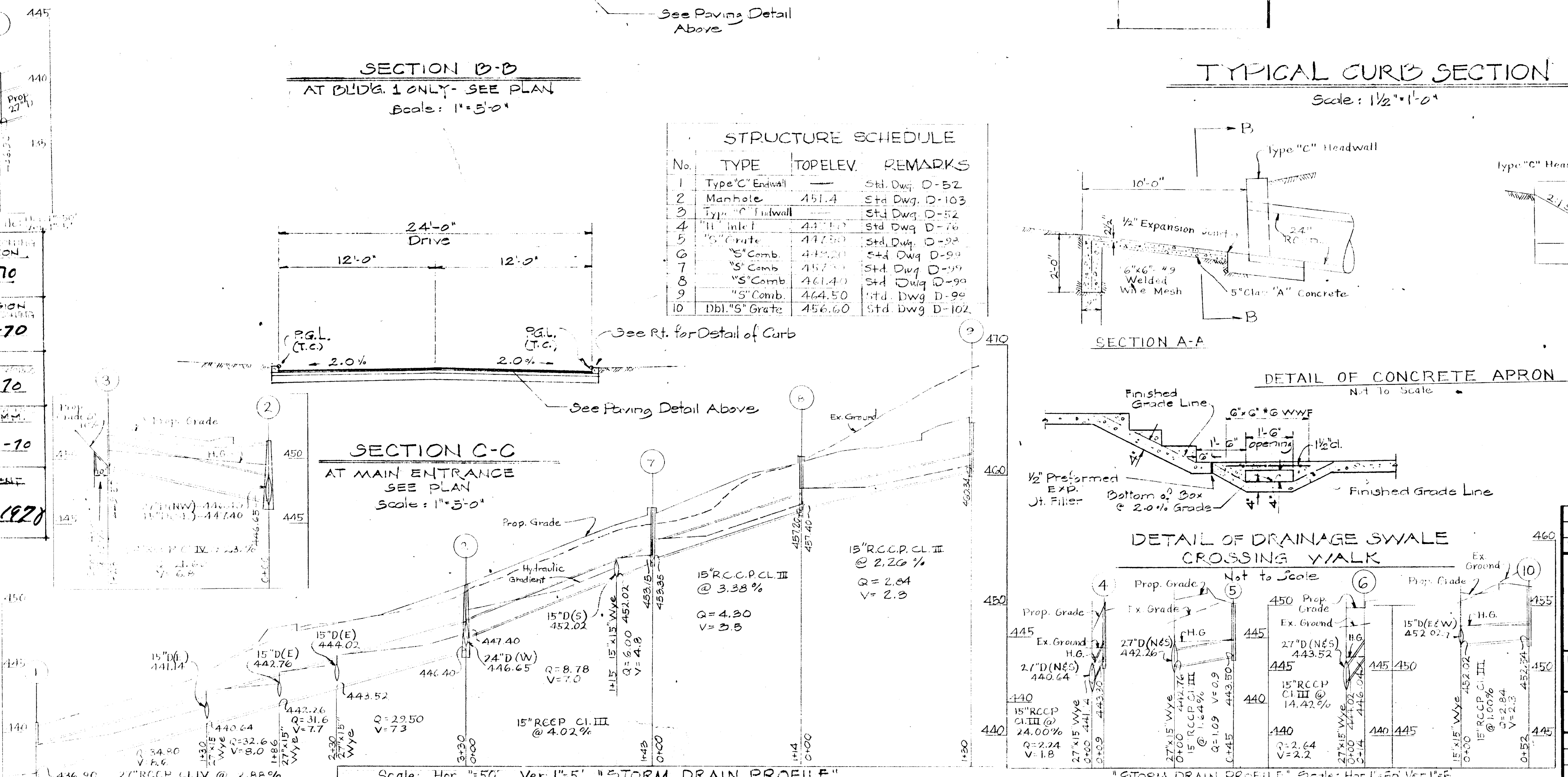
APPROVED SITE PLAN OFFICE OF PLANNING & ZONING  
 HOWARD COUNTY PLANNING COMMISSION  
 Thomas J. Harris 2-10-70  
 PLANNING DIRECTOR  
 APPROVED: HOWARD CO. PLANNING COMMISSION  
 DATE: 2-9-70  
 APPROVED: HOWARD COUNTY ROADS DEPT.  
 DATE: 2-5-70  
 APPROVED: HOWARD CO. METROPOLITAN COMM.  
 DATE: 2-5-70  
 APPROVED: HOWARD CO. HEALTH DEPARTMENT  
 DATE: Feb 9 1970



SECTION C-C  
 AT MAIN ENTRANCE  
 SEE PLAN  
 Scale: 1" = 5'-0"



DETAIL OF DRAINAGE SWALE  
 CROSSING WALK  
 Not to Scale



Scale: Hor. 1" = 50' Ver. 1" = 5' "STORM DRAIN PROFILE"

Rev Date	Rev No	Revision Description
1-22-70	2	Storm Dr. Profiles & Apron Detail
12-3-69	1	Per County Comments

**COLUMBIA MARYLAND**  
 OWNER AND DEVELOPER  
 HOWARD RESEARCH AND DEVELOPMENT CORP.  
 THE VILLAGE OF CROSS KEYS - BALTIMORE MARYLAND 21204

PROJECT AREA: VILLAGE OF HARPER'S CHOICE SECTION 3 AREA 2 LOT 17

PROJECT TITLE: STORM DRAIN PROFILE, TYPICAL CROSS SECTION & DETAILS

Des By: P.S.S. Scale: AS SHOWN Dwg No:  
 Drn By: P.S.S. Date: 11/5/69 C.C.F. No:  
 Chk By: P.S.S. Approved

MATZ, CHILDS & ASSOCIATES  
 1020 DREWELL BLVD. RD. 100  
 BALTIMORE, MARYLAND 21204  
 L.S. NO. 11 DRAWN BY: TRACY BY: CHENBY  
 10-160 P-25 W.V. D. P.S.S.