

**SITE ANALYSIS R-1**

AREA OF SITE (NET) 143,641

ACRES 3.27

UNIT COUNT 223

ALLOWABLE @ 2800 #/DU 227

PROVIDED 227

AREA OF SINGLEST 1 BDRM 108

AREA OF TWO BDRM 115

AREA OF SMALLEST 2 BDRM 993

ZONING R-1

ALLOWABLE @ 20% OF LOT 125,104.47

PROVIDED 124,235.72

REQUIRED @ 1.5/DU 341

PROVIDED 361

**CONSTRUCTION LAYOUT**

APPROVED - HOWARD COUNTY PLANNING COMM. 5-16-67

APPROVED - HOWARD COUNTY BOARD OF HEALTH 5-17-67

APPROVED - HOWARD COUNTY HEALTH DEPT. 5-17-67

APPROVED - PUBLIC WATER & SEWER 5-17-67

APPROVED - HOWARD COUNTY HEALTH DEPT. 5-17-67

APPROVED - HOWARD COUNTY BOARD OF HEALTH 5-17-67

APPROVED - HOWARD COUNTY BOARD OF HEALTH 5-17-67

**SITE PLAN**

APPROVED BY ACTION OF THE HOWARD COUNTY PLANNING COMMISSION 5-10-67

APPROVED BY PLANNING DIRECTOR 5-10-67

APPROVED BY PLANNING DIRECTOR 5-10-67

APPROVED BY PLANNING DIRECTOR 5-10-67

APPROVED BY PLANNING DIRECTOR 5-10-67

APPROVED BY PLANNING DIRECTOR 5-10-67

**TOWN & COUNTRY WEST**

SECTION II

HOWARD COUNTY

MARYLAND

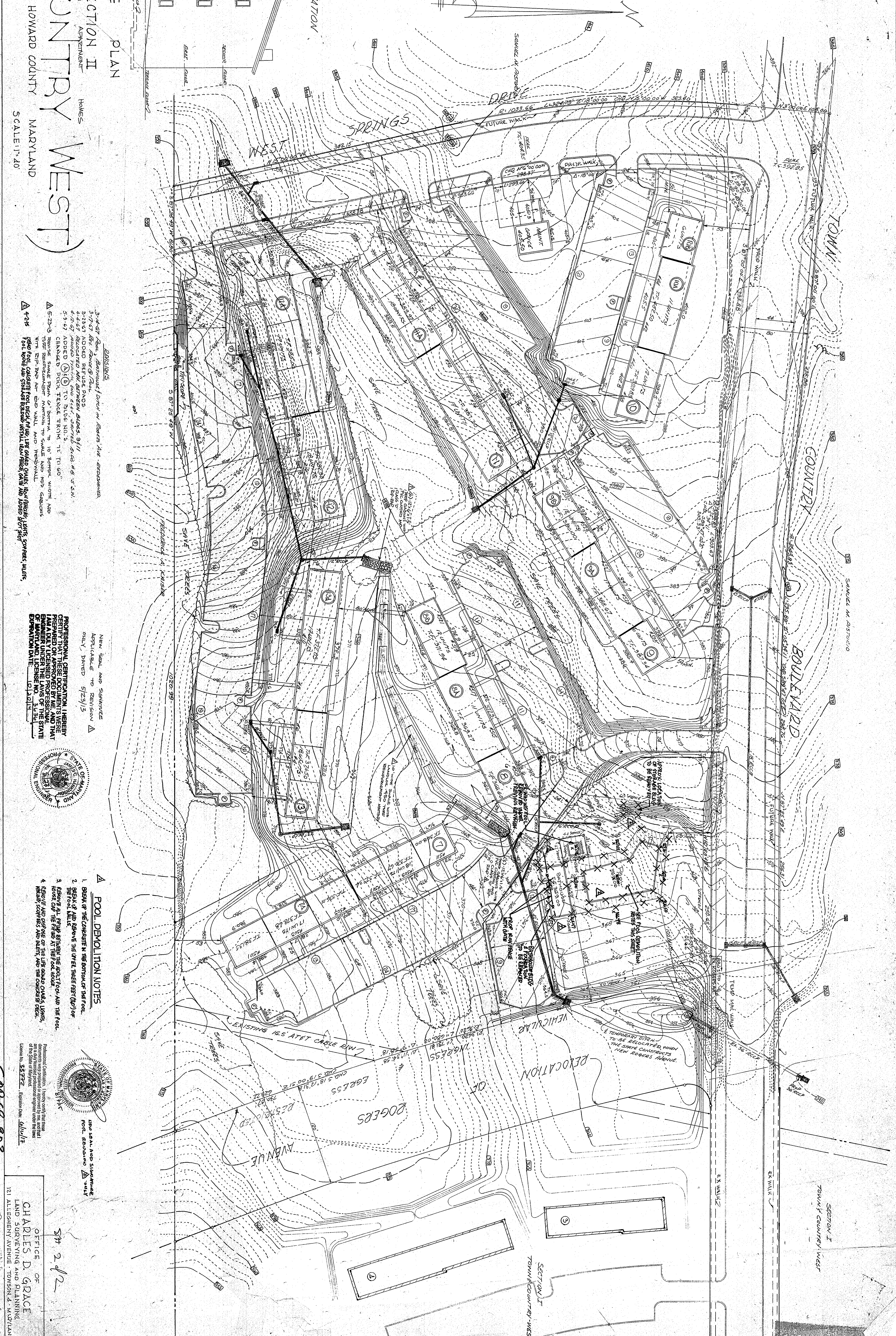
SCALE: 1" = 40'

2ND ELECTION DISTRICT

HOWARD COUNTY

MARYLAND

SCALE: 1" = 40'



**SECTION II**

HOWARD COUNTY

MARYLAND

SCALE: 1" = 40'

2ND ELECTION DISTRICT

HOWARD COUNTY

MARYLAND

SCALE: 1" = 40'

**NOTES:**

1. EXISTING CONTOURS

2. PROPOSED CONTOURS

3. PROPOSED SPACES 10' X 20'

4. PROPOSED SPACES 10' X 20'

5. PROPOSED SPACES 10' X 20'

6. PROPOSED SPACES 10' X 20'

7. PROPOSED SPACES 10' X 20'

8. PROPOSED SPACES 10' X 20'

9. PROPOSED SPACES 10' X 20'

10. PROPOSED SPACES 10' X 20'

**POOL DEMOLITION NOTES**

1. DEMOLISH POOL AND CONCRETE IN THE BOTTOM OF THE POOL.

2. DEMOLISH POOL AND CONCRETE IN THE BOTTOM OF THE POOL.

3. DEMOLISH POOL AND CONCRETE IN THE BOTTOM OF THE POOL.

4. DEMOLISH POOL AND CONCRETE IN THE BOTTOM OF THE POOL.

5. DEMOLISH POOL AND CONCRETE IN THE BOTTOM OF THE POOL.

6. DEMOLISH POOL AND CONCRETE IN THE BOTTOM OF THE POOL.

7. DEMOLISH POOL AND CONCRETE IN THE BOTTOM OF THE POOL.

8. DEMOLISH POOL AND CONCRETE IN THE BOTTOM OF THE POOL.

9. DEMOLISH POOL AND CONCRETE IN THE BOTTOM OF THE POOL.

10. DEMOLISH POOL AND CONCRETE IN THE BOTTOM OF THE POOL.

**PROFESSIONAL CERTIFICATION**

I HEREBY CERTIFY THAT THESE DOCUMENTS WERE PREPARED BY ME OR UNDER MY CLOSE PERSONAL SUPERVISION AND THAT I AM A LICENSED PROFESSIONAL ENGINEER UNDER THE LAWS OF THE STATE OF MARYLAND LICENSE NO. 10130112

DATE: 5/10/67

**NEW SEAL AND SIGNATURE**

APPLICABLE TO REVISION

ONLY DATED 5/23/15

PROFESSIONAL CERTIFICATION

I HEREBY CERTIFY THAT THESE DOCUMENTS WERE PREPARED BY ME OR UNDER MY CLOSE PERSONAL SUPERVISION AND THAT I AM A LICENSED PROFESSIONAL ENGINEER UNDER THE LAWS OF THE STATE OF MARYLAND LICENSE NO. 10130112

DATE: 5/10/67

OFFICE OF CHARLES D. GRACE LAND SURVEYING AND PLANNING 121 ALLEIGHEN AVENUE TOWSON, MARYLAND

5/11/67

5/11/67

5/11/67

5/11/67