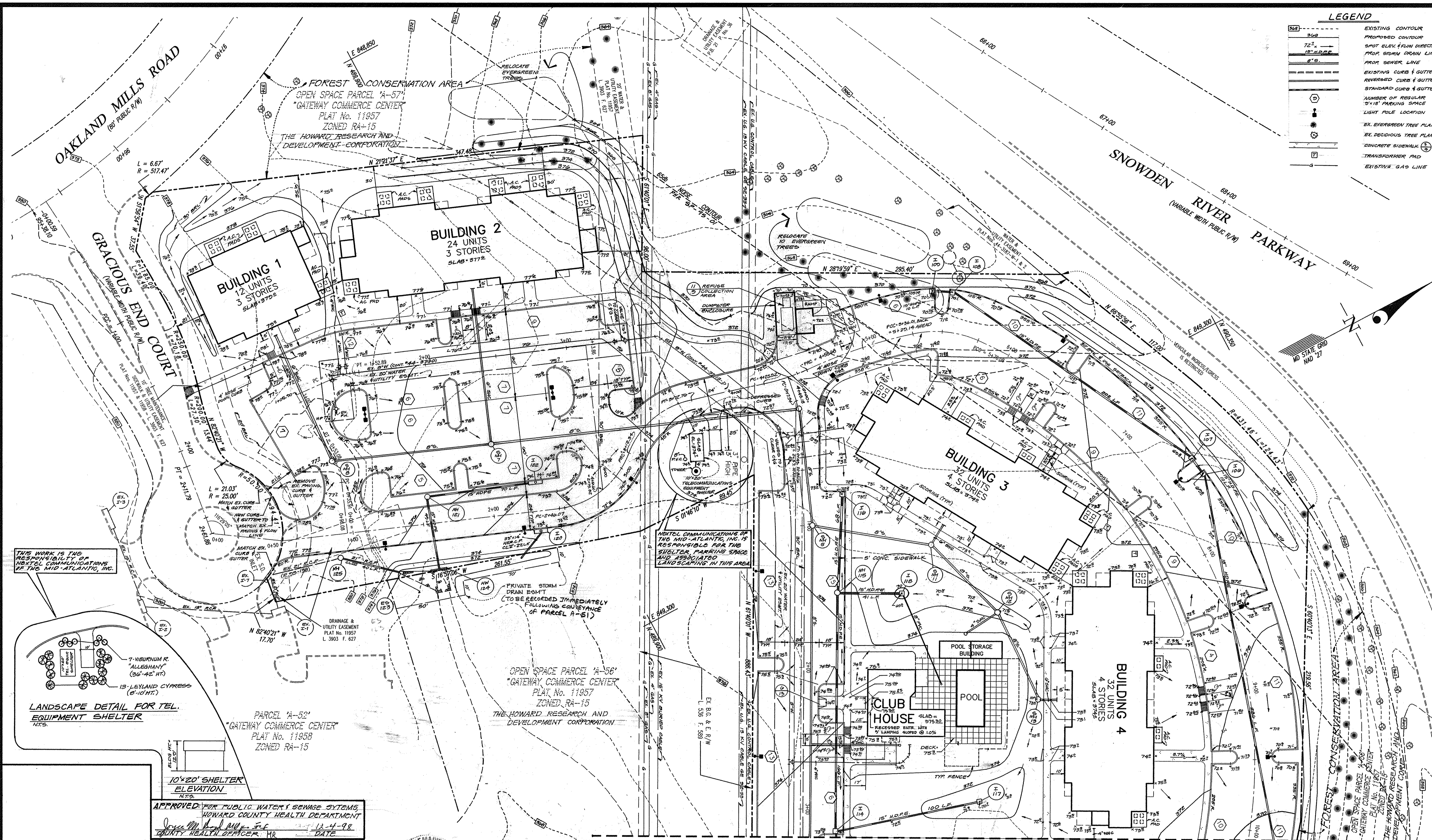
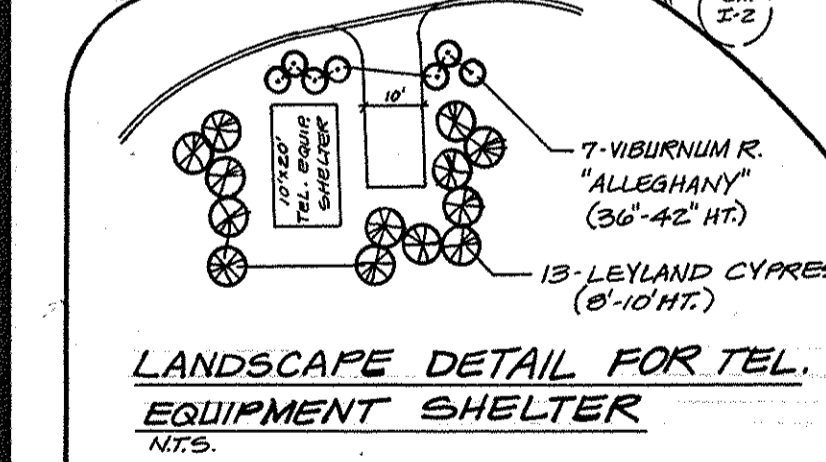


LEGEND

- EXISTING CONTOUR
- - - PROPOSED CONTOUR
- SPOT ELEV. FLOW DIRECTION
- - - PROP. STORM DRAIN LINE
- - - PROP. SEWER LINE
- - - EXISTING CURB & GUTTER
- - - REVERSED CURB & GUTTER
- - - STANDARD CURB & GUTTER
- NUMBER OF REGULAR 3'x12' PARKING SPACE
- LIGHT POLE LOCATION
- EX. EVERGREEN TREE PLANTING
- EX. DECIDUOUS TREE PLANTING
- CONCRETE SIDEWALK
- TRANSFORMER PAD
- EXISTING GAS LINE



THIS WORK IS THE RESPONSIBILITY OF NEXTEL COMMUNICATIONS, INC. OF THE MID-ATLANTIC, INC.



APPROVED FOR PUBLIC WATER & SEWAGE SYSTEMS
 HOWARD COUNTY HEALTH DEPARTMENT
 COUNTY HEALTH OFFICER: HR DATE: 12-4-98

APPROVED: HOWARD COUNTY DEPARTMENT OF PLANNING & ZONING
 Director: 12/11/98
 Chief, Division of Land Development: 12/8/98
 Chief, Development Engineering Division: 11/30/98



NOTE: FOR TYPICAL PARKING SPACE STRIPING SEE DETAIL 10/9

MATCH LINE SHEET 3 OF 7

GLW GUTSCHICK LITTLE & WEBER, P.A. CIVIL ENGINEERS, LAND SURVEYORS, LAND PLANNERS, LANDSCAPE ARCHITECTS 3909 NATIONAL DRIVE - SUITE 250 - BURTONSVILLE OFFICE PARK BURTONSVILLE, MARYLAND 20886 TEL: 301-421-4024 BAL: 410-880-1820 DC/VA: 301-989-2524 FAX: 301-421-4186		OWNER: GEAPE & INC. c/o THE HOWARD RESEARCH AND DEVELOPMENT CORPORATION COLUMBIA, MD. 21044 (410) 992-6027		DEVELOPER/CONTRACT PURCHASER: SHELTER DEVELOPMENT L.L.C. SUITE 500, PARK CHARLES 218 NORTH CHARLES STREET BALTIMORE, MD. 21201 (410) 962-0595		SITE DEVELOPMENT PLAN GATEWAY COMMERCE CENTER PARCEL "A-51" PLAT No. 11957		SCALE 1"=30' DATE 10-23-98 6:10 SET	ZONING RA-15 TAX MAP - GRID 42 - 5	G. L. W. FILE No. 98021 SHEET 2 OF 14
1-25-99 ADDED TEL. EQUIP. SHELTER & DRIVE, SHELTER ELEV. AND LANDSCAPE DETAIL FOR SHELTER. HKJ 10-12-98 ADDED SW BY BLDG. 1 & 2, REV. ST. DRAIN BY ENTR. DRIVE, REV. GRADING BEHIND BLDG. 2 - PER HRD. HKJ 10-29-98 REV. W/C TO BLDG. 1 & 2 - PER HO. CO. HKJ	DATE REVISION BY APPR.	GULFORD ELECTION DISTRICT No. 6 HOWARD COUNTY, MARYLAND		SDP-99-16						