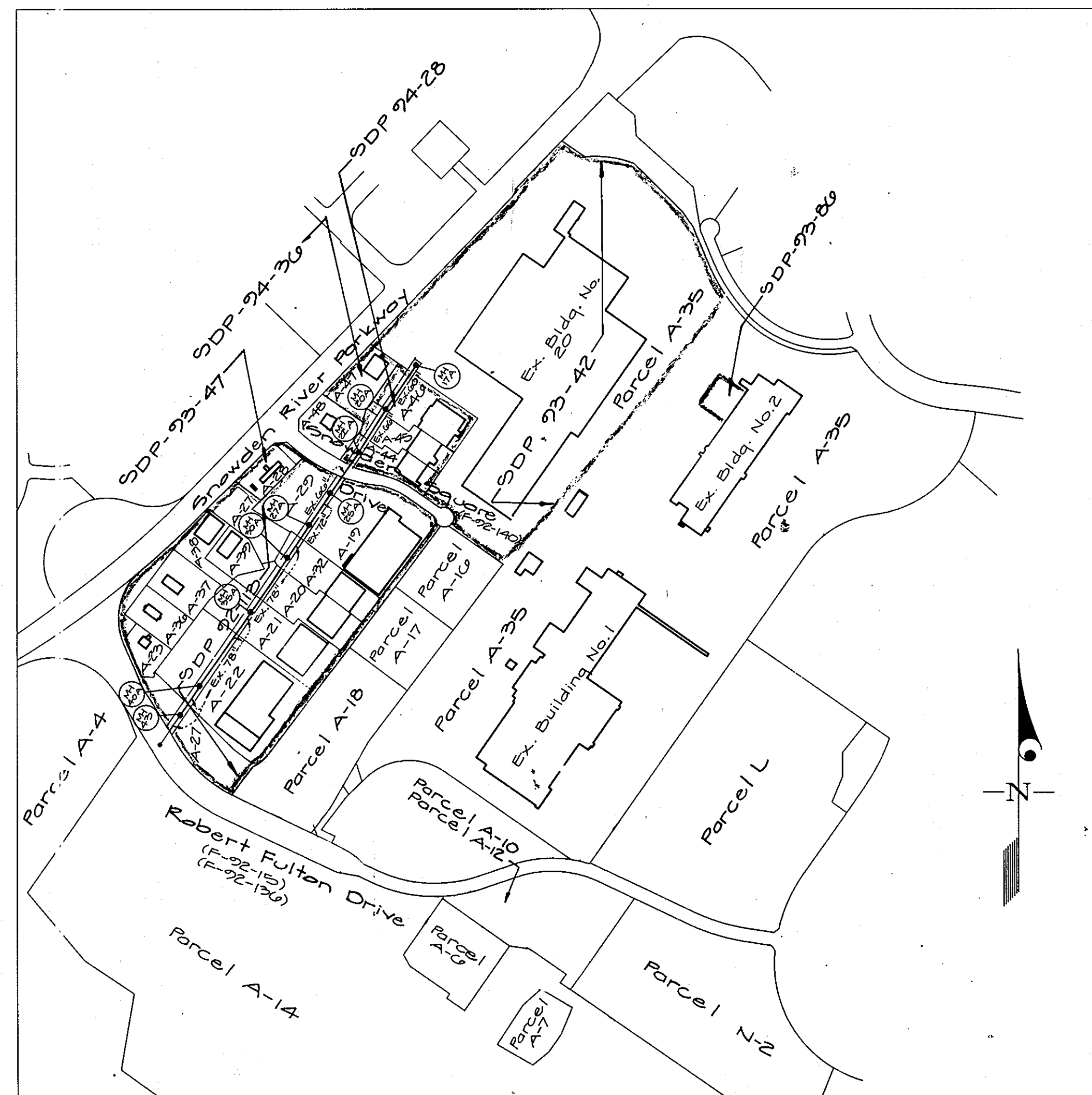


STORM DRAINS

GATEWAY COMMERCE CENTER

SIXTH ELECTION DISTRICT

HOWARD COUNTY, MARYLAND



VICINITY MAP
SCALE: 1"=600'

OWNER/DEVELOPER
HOWARD RESEARCH AND DEVELOPMENT CORPORATION
10275 LITTLE PATUXENT PARKWAY
COLUMBIA, MARYLAND 21044

APPROVED: DEPARTMENT OF PUBLIC WORKS	
<i>Robert J. Sporn</i> CHIEF, BUREAU OF ENGINEERING	7/17/96 DATE
APPROVED: DEPARTMENT OF PLANNING AND ZONING	
<i>Gina Scrimmy</i> CHIEF, DIVISION OF LAND DEVELOPMENT & RESEARCH	8/12/96 DATE
APPROVED: DEPARTMENT OF PUBLIC WORKS	
<i>Andrew M. Daniels</i> CHIEF, BUREAU OF HIGHWAYS	12-22-95 DATE
APPROVED: DEPARTMENT OF PUBLIC WORKS	
<i>John Dammer</i> CHIEF, LAND DEVELOPMENT DIVISION	7/16/96 DATE

John Dammer

GLW GUTSCHICK LITTLE & WEBER, P.A.
CIVIL ENGINEERS, SURVEYORS, PLANNERS, LANDSCAPE ARCHITECTS
3909 NATIONAL DRIVE · SUITE 250 · BURTONSVILLE OFFICE PARK · BURTONSVILLE, MD. 20866
TELEPHONE: (301)421-4024 NO. VA. (301)989-2524 BALTO. (301)880-1820 FAX (301)421-4186

DATE	REVISION	BY	APPR.

Cover Sheet			
DES.: Phase II Storm Drain Dedication Gateway Commerce Center	SCALE 1" = 600'	ZONING 42	G.L.W. FILE NO. 91-055
DRN.: W.S.J.	DATE December 1993	TAX MAP NO.	SHEET 1 OF 5
CHK.: 			
Sixth Election District		Howard County, Maryland	

1158

F92-998 F92-598

DATE	
BY	
NO.	
PLAN	
NOTE BOOK	
NO.	

APPROVED
DEPARTMENT OF PUBLIC WORKS

Andrew M. Daniels 12-22-95
CHIEF, BUREAU OF HIGHWAYS DATE

John Damann 7/17/96
CHIEF, LAND DEVELOPMENT DIVISION MK DATE

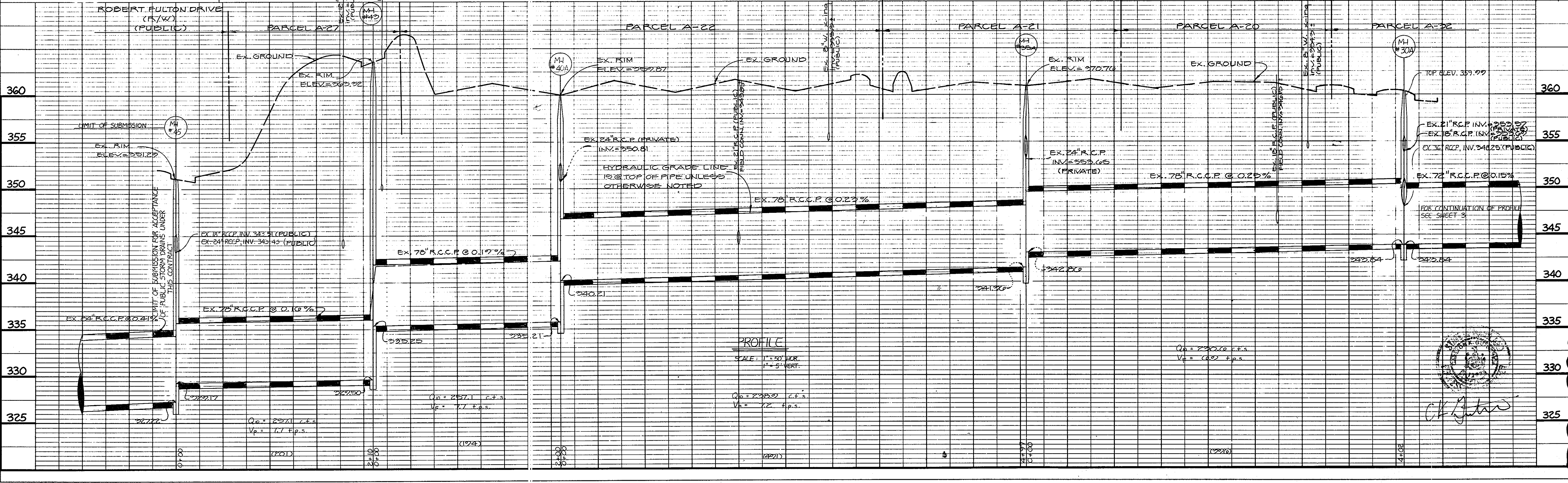
APPROVED
DEPARTMENT OF PUBLIC WORKS

John Damann 7/17/96
CHIEF, BUREAU OF ENGINEERING DATE

APPROVED
DEPARTMENT OF PLANNING AND ZONING

John Damann 8/12/96
CHIEF DIVISION OF LAND DEVELOPMENT AND RESEARCH DATE

DATE	
BY	
NO.	
PROFILE	
NOTE BOOK	
NO.	

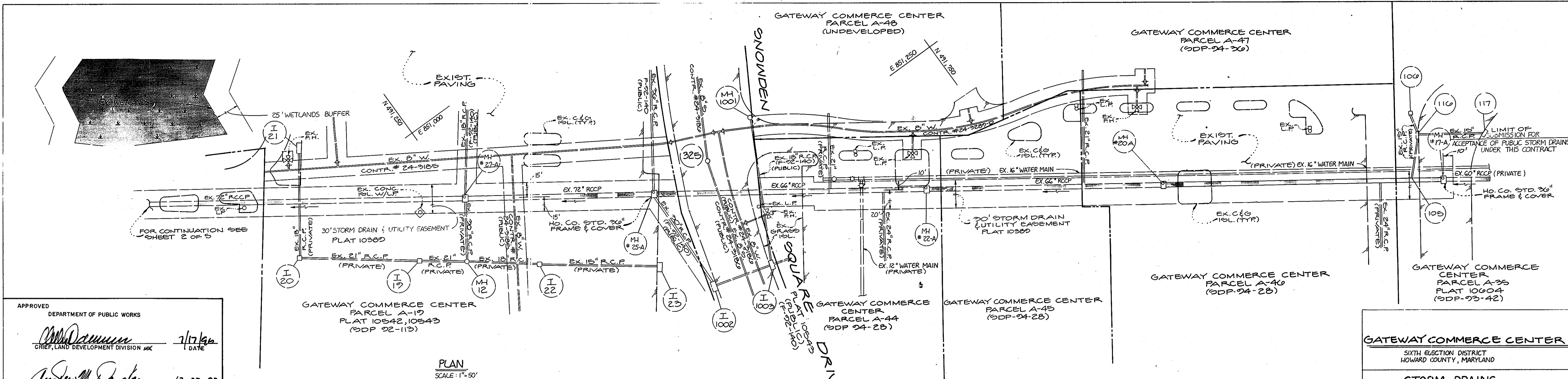


DATE	
BY	
SURVEYED	
ALIGNED	
NOTED	
NO.	

DATE	
BY	
SURVEYED	
ALIGNED	
NOTED	
NO.	

DATE	
BY	
SURVEYED	
ALIGNED	
NOTED	
NO.	

DATE	
BY	
SURVEYED	
ALIGNED	
NOTED	
NO.	



APPROVED
DEPARTMENT OF PUBLIC WORKS
Mr. Danman 7/17/96
CHIEF, LAND DEVELOPMENT DIVISION MK DATE

APPROVED
DEPARTMENT OF PUBLIC WORKS
Andrew M. D'Amico 12-22-95
CHIEF, BUREAU OF HIGHWAYS HS DATE

APPROVED
DEPARTMENT OF PUBLIC WORKS
Paul R. Simpson 7/17/96
CHIEF, BUREAU OF ENGINEERING DATE

APPROVED
DEPARTMENT OF PLANNING AND ZONING
Jim Summery 8/12/96
CHIEF, DIVISION OF LAND DEVELOPMENT AND RESEARCH DATE

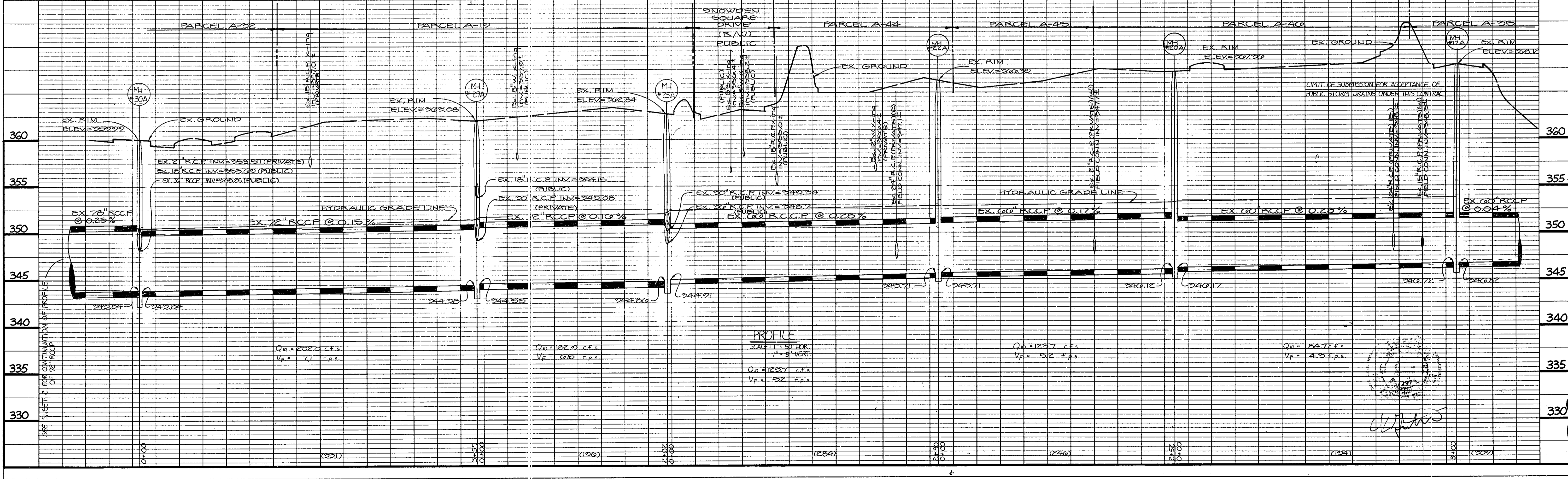
NOTE: ALL UTILITIES INDICATED ARE IN USE, AND ACTIVE UNLESS INDICATED AS ABANDONED OR ABANDONED IN PLACE.

GATEWAY COMMERCE CENTER
SIXTH ELECTION DISTRICT
HOWARD COUNTY, MARYLAND

STORM DRAINS
PLAN AND PROFILE

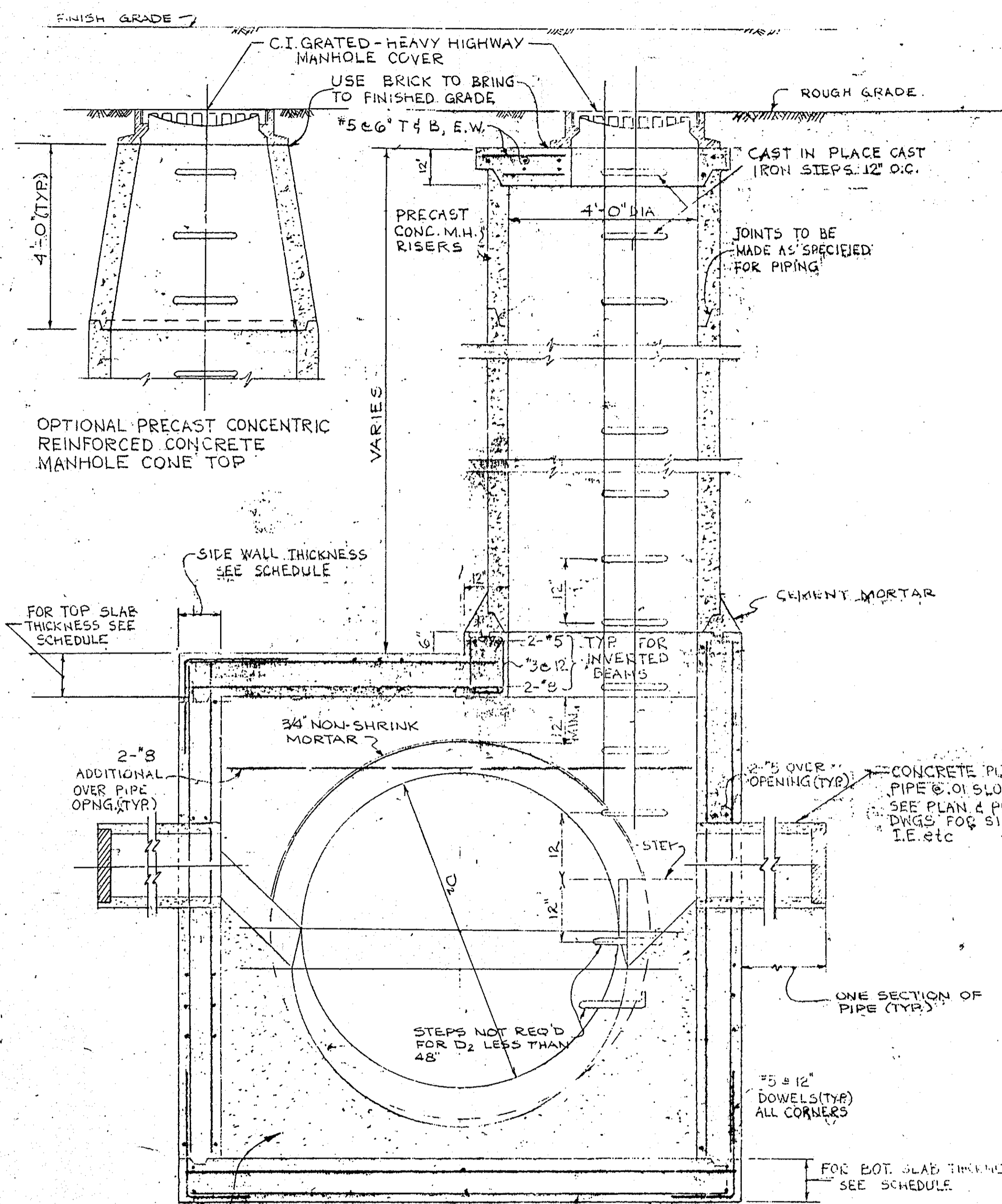
OWNER AND DEVELOPER
HOWARD RESEARCH AND DEVELOPMENT CORP.
10275 LITTLE PATUXENT PARKWAY
COLUMBIA, MARYLAND 21044

SCALE: AS SHOWN DATE: OCTOBER 1, 1991 DWG. NO. 3 OF 5
DES. DRN. W.B.J. CHR.
GUTSCHICK, LITTLE & WEBER P.A.
CIVIL ENGINEERS, SURVEYORS, PLANNERS &
LANDSCAPE ARCHITECTS
3909 NATIONAL DRIVE SUITE 250
BARTONSVILLE OFFICE PARK, BARTONSVILLE MD, 20830



1158

F-92-1002-1158

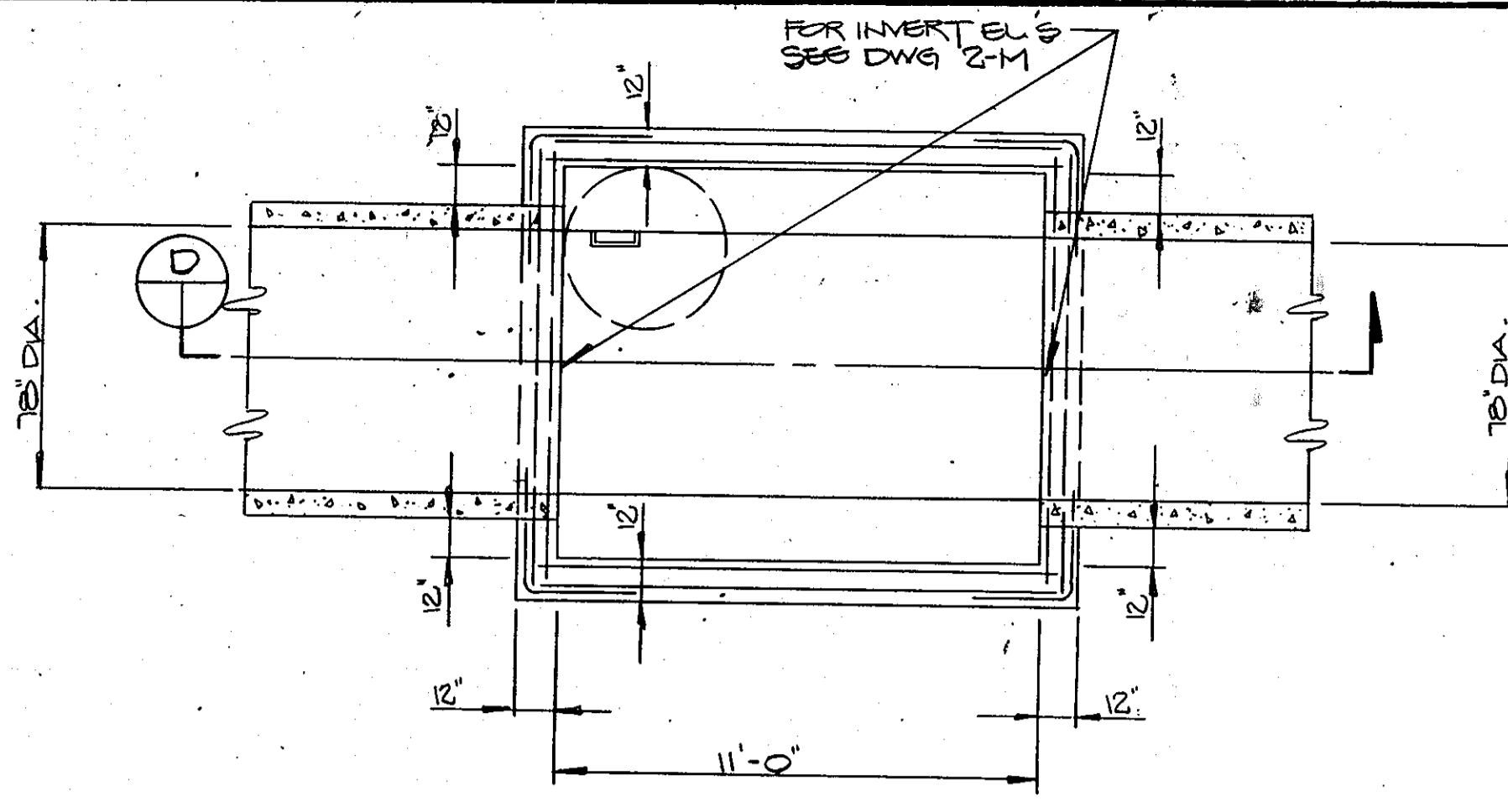


SECTION A

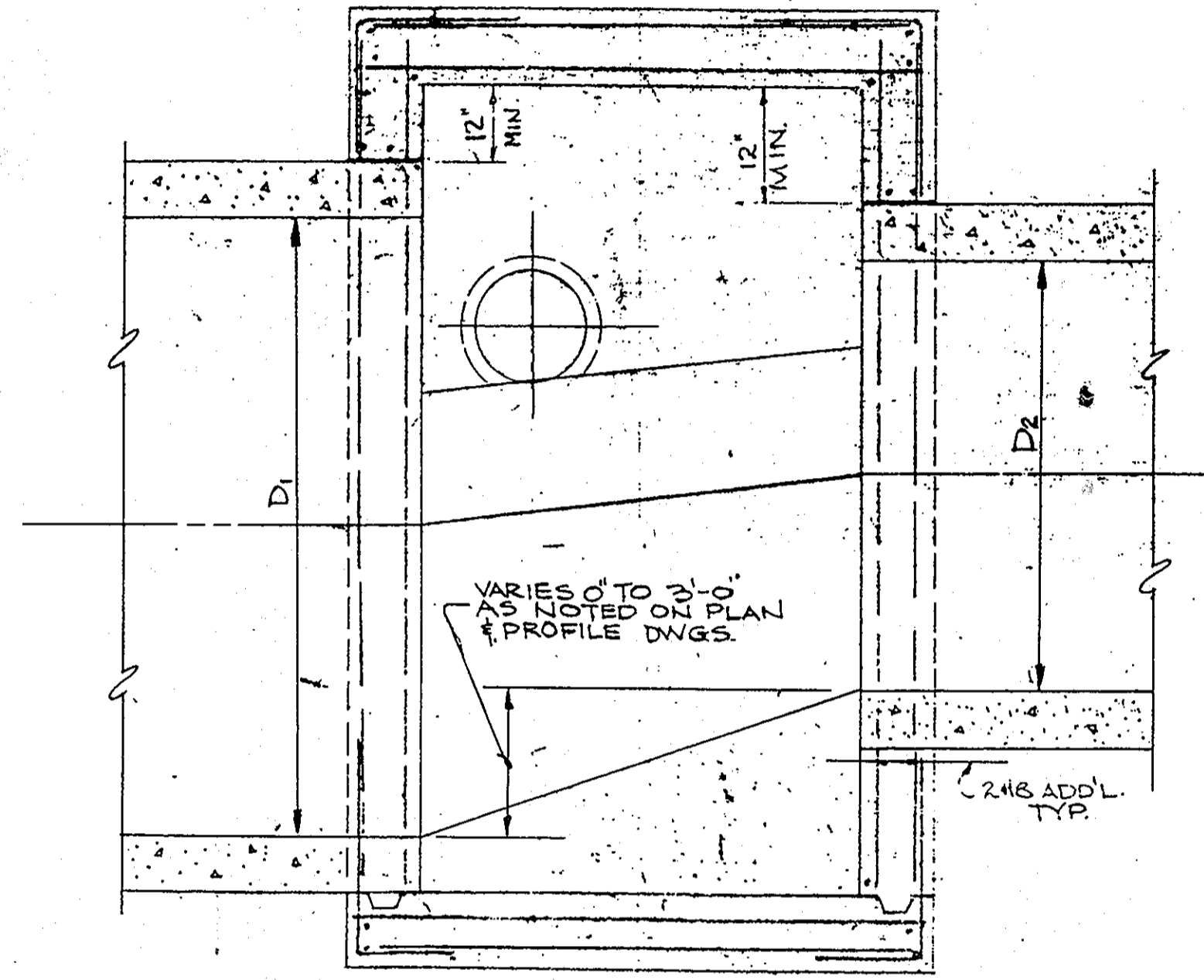
DETAILS OF TYPICAL STORM SEWER MANHOLE
NO SCALE

TYPE	TOP SLAB		BOTTOM SLAB		SIDE WALLS	
	THICKNESS	STEEL (SS)	THICKNESS	STEEL (SS)	THICKNESS	STEEL (I.F. HORIZ)
A	12"	#6 @ BOT	12"	#7 @ TOP	12"	#5 @
B	12"	#7 @ BOT	14"	#7 @ TOP	12"	#6 @
C	12"	#7 @ BOT	14"	#7 @ TOP	12"	#6 @
D	14"	#7 @ BOT	16"	#7 @ TOP	12"	#7 @
E	16"	#7 @ BOT	16"	#7 @ TOP	12"	#7 @

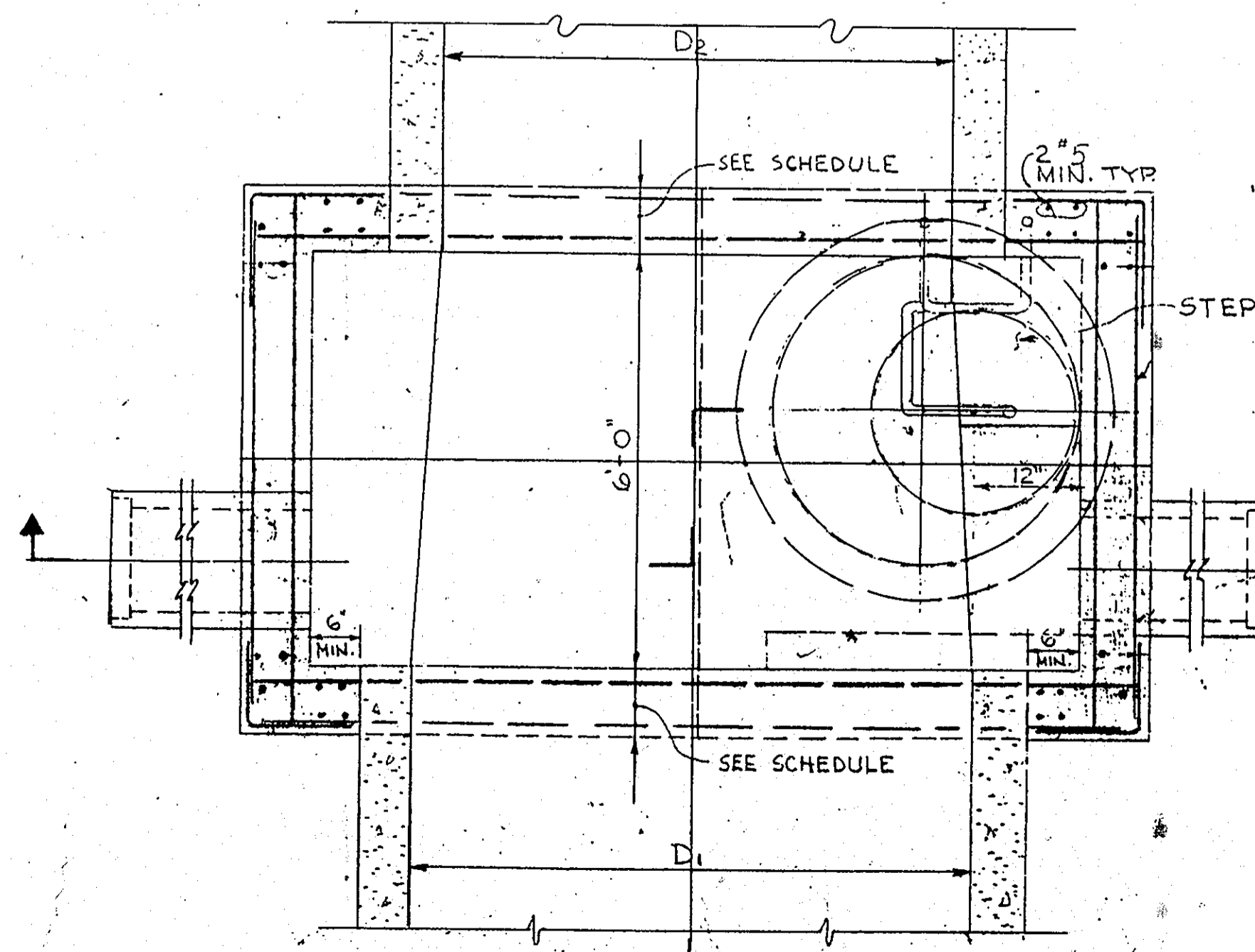
(SS) INDICATES SHORT SPAN IN MANHOLE.
ALL STEEL NOT DESIGNATED SHALL BE #5 @ 12".



PLAN - M.H. 40 & M.H. 43



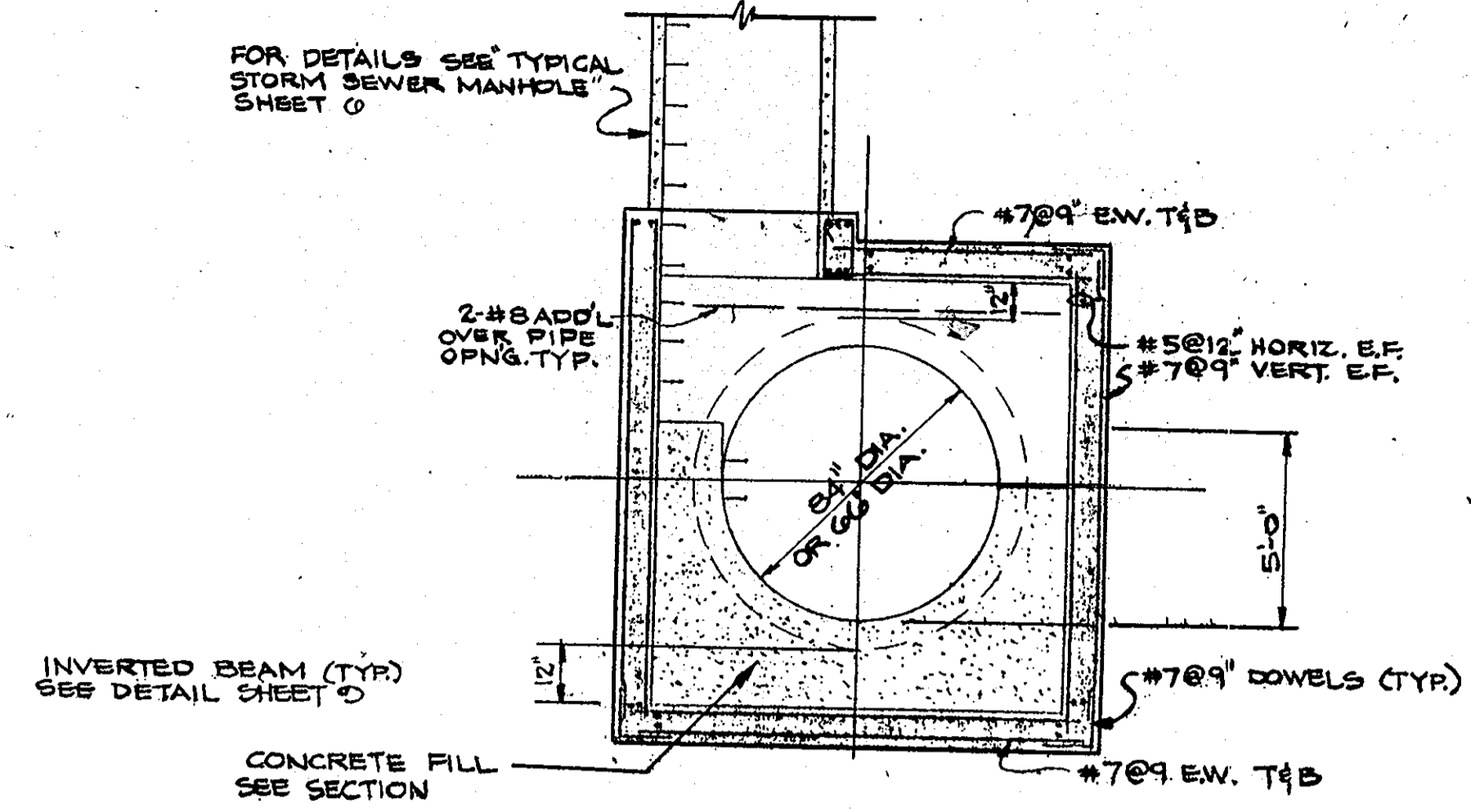
SECTION C



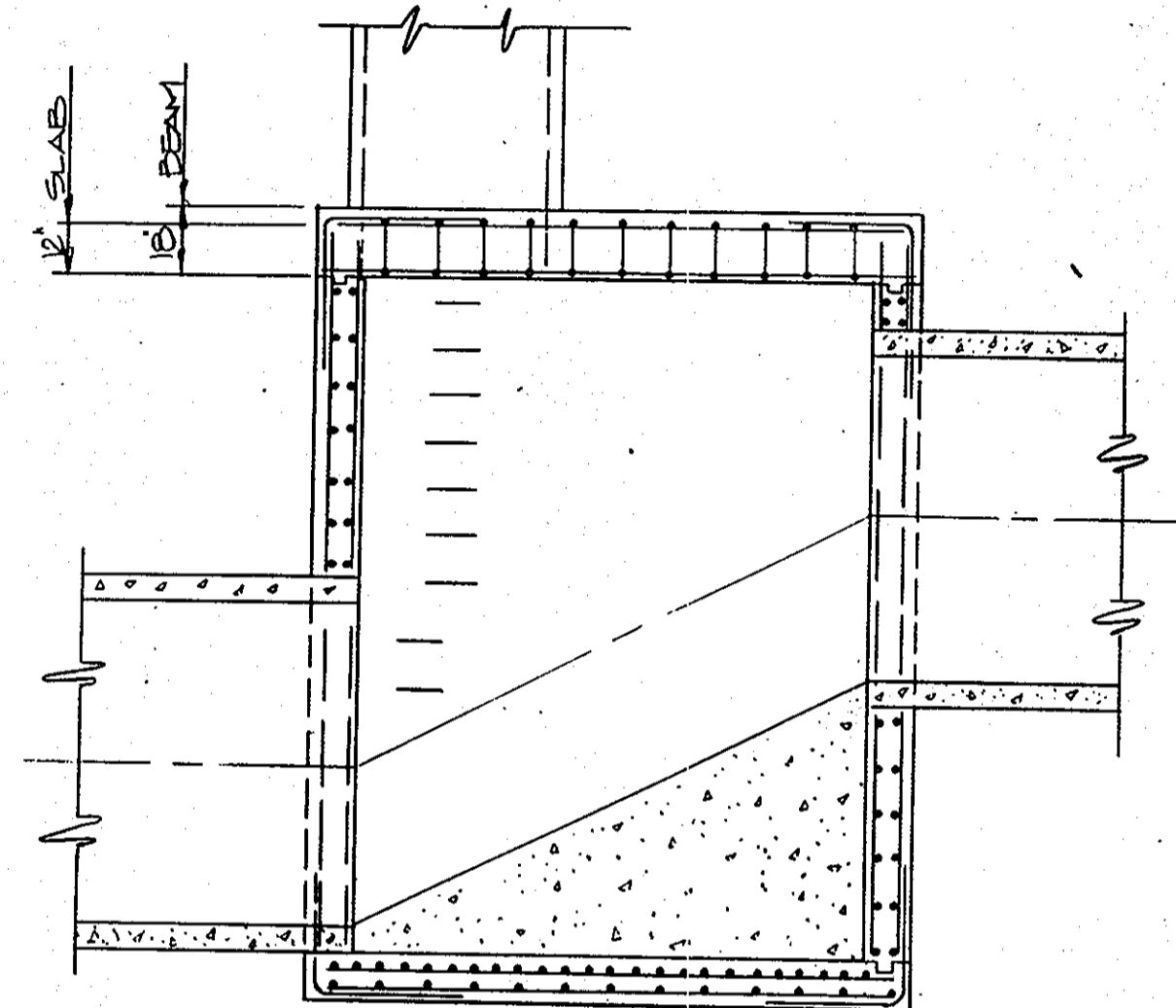
PLAN

STRUCTURE	STRUCTURE SCHEDULE				NORTH COORDINATE	EAST COORDINATE
	TOP ELEV.	INV. IN.	INV. OUT	INV. IN.		
MH 45*	362.90	329.17	327.22	489633.884	850126.634	
MH 43	362.32	335.25	329.50	490062.280	850254.683	
MH 40A*	359.87	340.21	335.21	490225.499	850369.174	
MH 35A*	370.76	342.80	341.20	490632.444	850655.015	
MH 30A*	359.60	343.84	343.84	490962.507	850884.134	
MH 27A*	362.08	344.55	344.35	491255.161	851088.591	
MH 25A*	362.82	344.91	344.80	491420.743	851204.272	
MH 22A*	366.39	345.71	345.71	491657.932	851370.903	
MH 20A*	367.30	346.17	346.12	491864.370	851515.378	
MH 17A*	366.12	346.82	346.72	492110.175	851686.911	

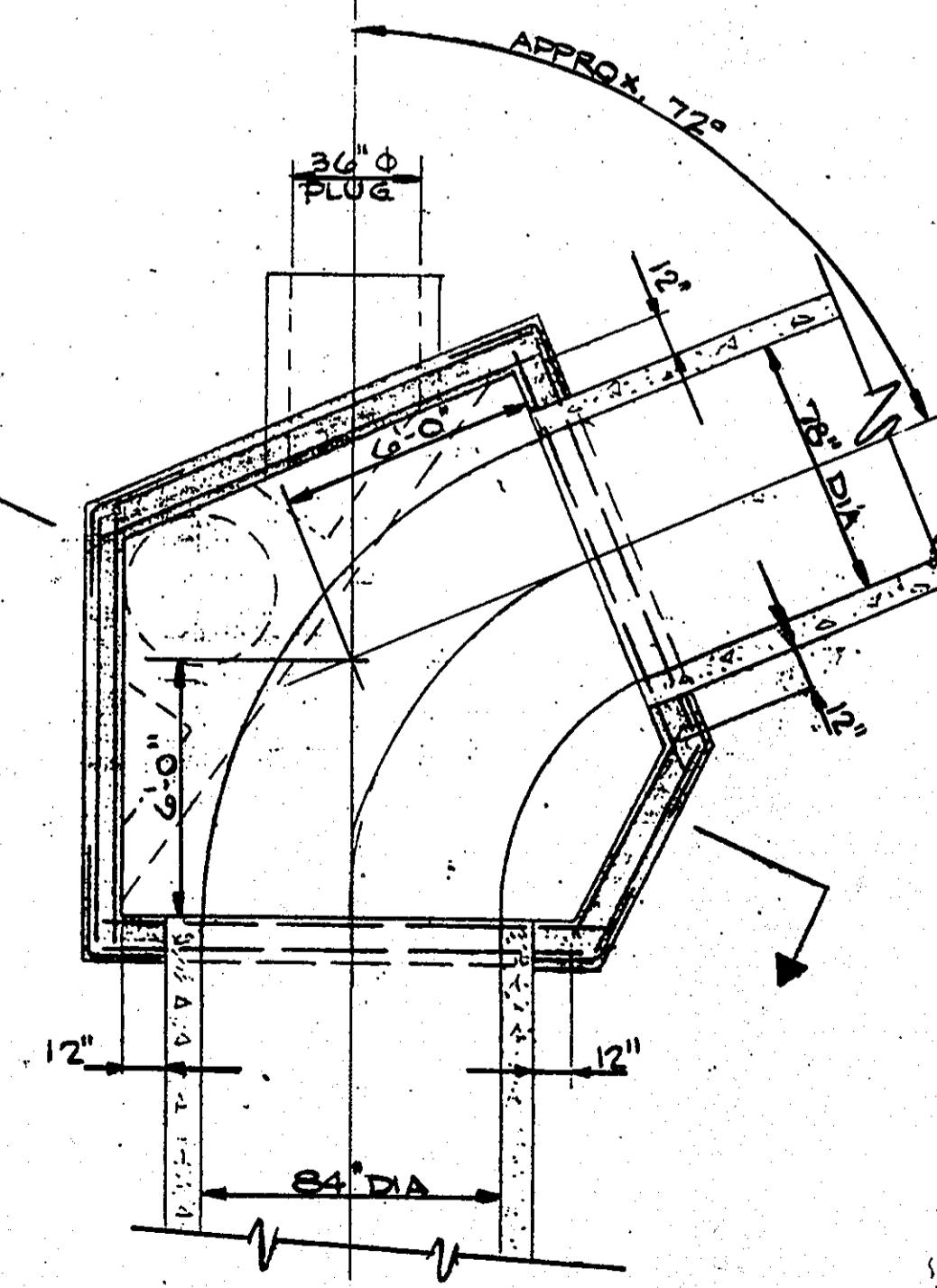
* DELIMITED FIELD LOCATION BY FISHER, COLLINS AND CARTER INC.
* DELIMITED TAKEN FROM GEORGETOWN ELECTRIC APPLIANCE PARK-EAST
* AS-BUILT, JULY 2005



SECTION B



SECTION D



GUTSCHICK, LITTLE & WEBER P.A.
CIVIL ENGINEERS, SURVEYORS, PLANNERS &
LANDSCAPE ARCHITECTS
3909 NATIONAL DRIVE SUITE 250
BURTONSVILLE OFFICE PARK BURTONSVILLE MD 20884

APPROVED
DEPARTMENT OF PUBLIC WORKS
Mr. Dammann 7/17/96
CHIEF, LAND DEVELOPMENT DIVISION (M.Z.) DATE

APPROVED
DEPARTMENT OF PUBLIC WORKS
Andrew M. Fowler 12-22-95
CHIEF, BUREAU OF HIGHWAYS (H.S.) DATE

APPROVED
DEPARTMENT OF PUBLIC WORKS
Paul G. Jenson 7/17/96
CHIEF, BUREAU OF ENGINEERING (DATE)

APPROVED
OFFICE OF PLANNING AND ZONING
Jim Summers 8/12/96
CHIEF, DIVISION OF LAND DEVELOPMENT and Research (DATE)

Gateway Commerce Center
SIXTH ELECTION DISTRICT
HOWARD COUNTY, MARYLAND

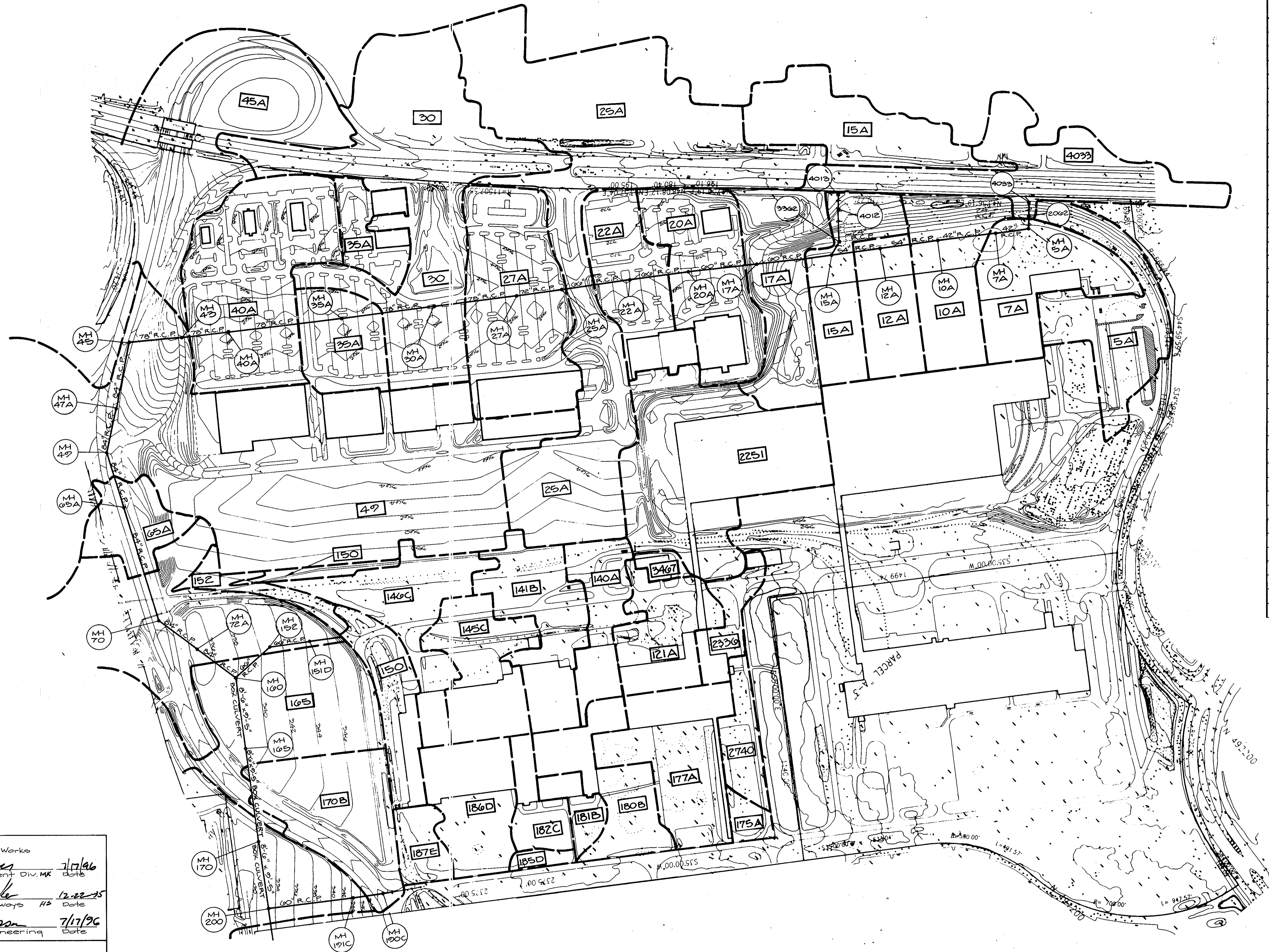
STORM DRAINS
PLAN AND PROFILE

OWNER AND DEVELOPER
HOWARD RESEARCH AND DEVELOPMENT CORP.
10245 LITTLE PATUXENT PARKWAY
COLUMBIA, MARYLAND 21044

NO SCALE DATE: Dec., 1993 DWG. NO. 4 OF 5
DES. D.W.N. CHK. M.J.T.

1158

F-92-998
F-92-1002 (D.P.W.)



Drainage Area	"C"	Acreage
5A	0.27	6.06
7A	0.51	5.51
10A	0.51	4.91
12A	0.62	3.30
15A	0.45	10.48
17A	0.24	5.15
20A	0.65	7.94
22A	0.48	10.21
25A	0.57	28.63
27A	0.56	8.37
30	0.43	16.38
35A	0.56	6.12
40A	0.52	10.99
45A	0.27	16.10
47A	0.12	0.40
49	0.53	62.92
65A	0.28	3.70
72A	0.50	27.99
121A	0.43	4.13
105A	0.51	57.08
170B	0.44	7.14
175A	0.27	0.78
177A	0.46	6.05
180B	0.39	4.29
181B	0.40	1.17
182C	0.34	1.96
185D	0.22	0.49
186D	0.38	4.69
187E	0.22	1.71
200	0.45	8.23
2251	0.58	8.50
2336	0.46	1.91
2740	0.21	2.00
3467	0.52	0.36
4033	0.26	8.04
4013	0.45	5.85
140	0.39	3.89
141B	0.37	5.17
145C	0.39	4.64
146C	0.23	5.28
150	0.32	4.44
152	0.19	1.65

Approved
Department of Public Works
Charles W. ... 7/17/96
Chief, Land Development Div. MK Date

Charles M. ... 12-22-95
Chief, Bureau of Highways HS Date

Paul ... 7/17/96
Chief, Bureau of Engineering Date

Approved
Department of Planning and Zoning
Anna ... 8/12/96
Chief, Division of Land Development and Research Date

1158

GLW GUTSCHICK LITTLE & WEBER, P.A.
CIVIL ENGINEERS, SURVEYORS, PLANNERS, LANDSCAPE ARCHITECTS
3909 NATIONAL DRIVE · SUITE 250 · BURTONSVILLE OFFICE PARK · BURTONSVILLE, MD 20866
TELEPHONE (301)421-4024 NO VA (301)989-2524 BALTO (301)880-1820 FAX (301)421-4186

DATE	REVISION	BY	APP'R.

PREPARED FOR:
Howard Research & Development Corporation
10275 Little Patuxent Parkway
Columbia, Maryland 21044
410-392-6027

DRAINAGE AREA MAP
Phase II Storm Drain Dedication
Gateway Commerce Center
Sixth Election District
Howard County, Maryland

DES.:	SCALE	ZONING	G.L.W. FILE NO.
W.S.J.	1" = 200'		91-055
DRN.:	DATE	TAX MAP NO.	SHEET
W.S.J.	December 1993	42	5 OF 5
CHK.:			

CLP

866-263