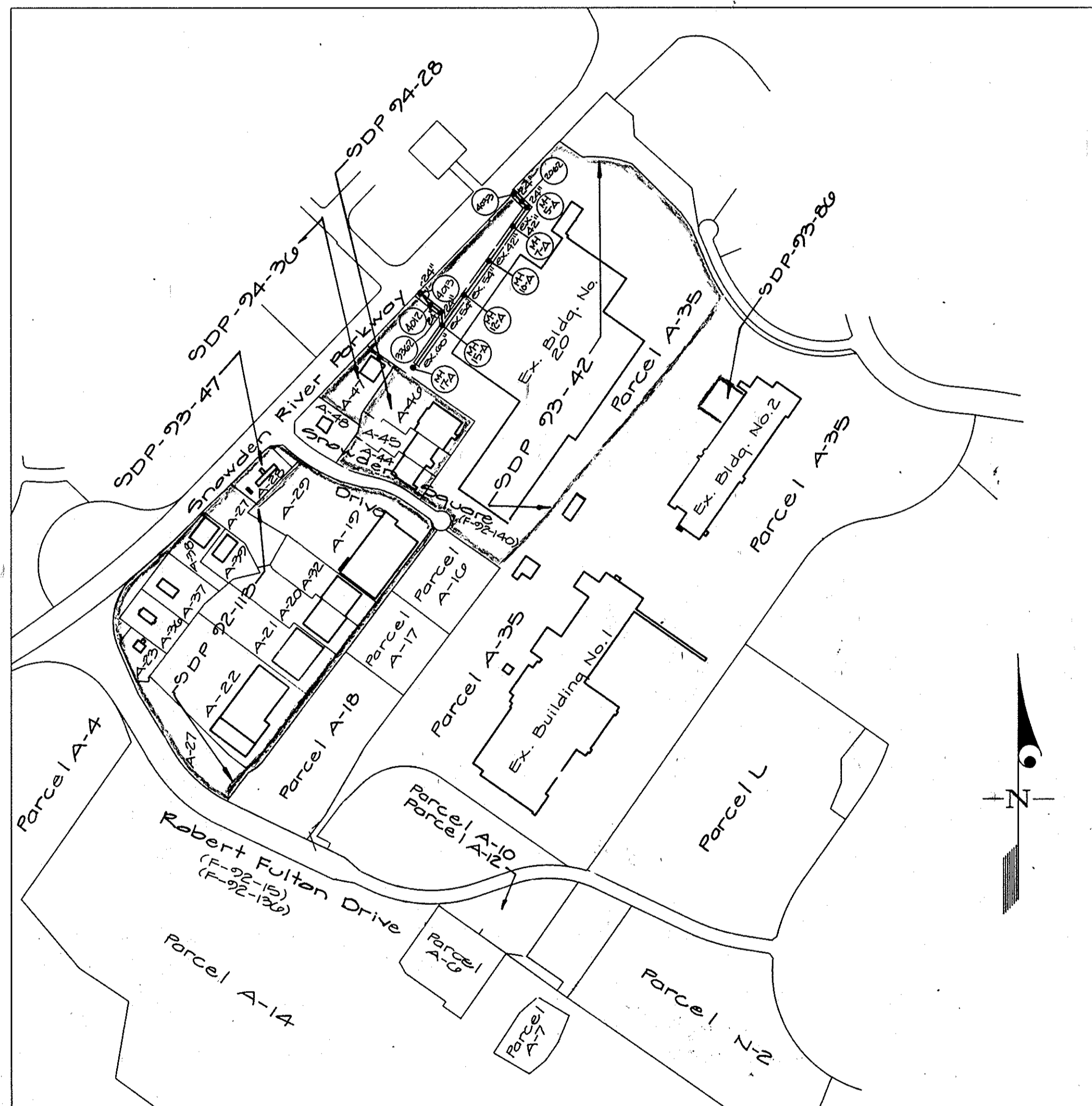


# STORM DRAINS

## GATEWAY COMMERCE CENTER

### SIXTH ELECTION DISTRICT

### HOWARD COUNTY, MARYLAND



VICINITY MAP  
SCALE: 1"=600'

OWNER/DEVELOPER  
HOWARD RESEARCH AND DEVELOPMENT CORPORATION  
10275 LITTLE PATUXENT PARKWAY  
COLUMBIA, MARYLAND 21044

APPROVED: DEPARTMENT OF PUBLIC WORKS	
<i>Paul W. Sapon</i> CHIEF, BUREAU OF ENGINEERING	7/17/96 DATE
APPROVED: DEPARTMENT OF PLANNING AND ZONING	
<i>Jim Swinney</i> CHIEF, DIVISION OF LAND DEVELOPMENT & RESEARCH	8/12/96 DATE
APPROVED: DEPARTMENT OF PUBLIC WORKS	
<i>Andrew M. Paule</i> CHIEF, BUREAU OF HIGHWAYS	12-22-95 DATE
APPROVED: DEPARTMENT OF PUBLIC WORKS	
<i>John D. ...</i> CHIEF, LAND DEVELOPMENT DIVISION	7/17/96 DATE



*CK [Signature]*

1158

F92-999

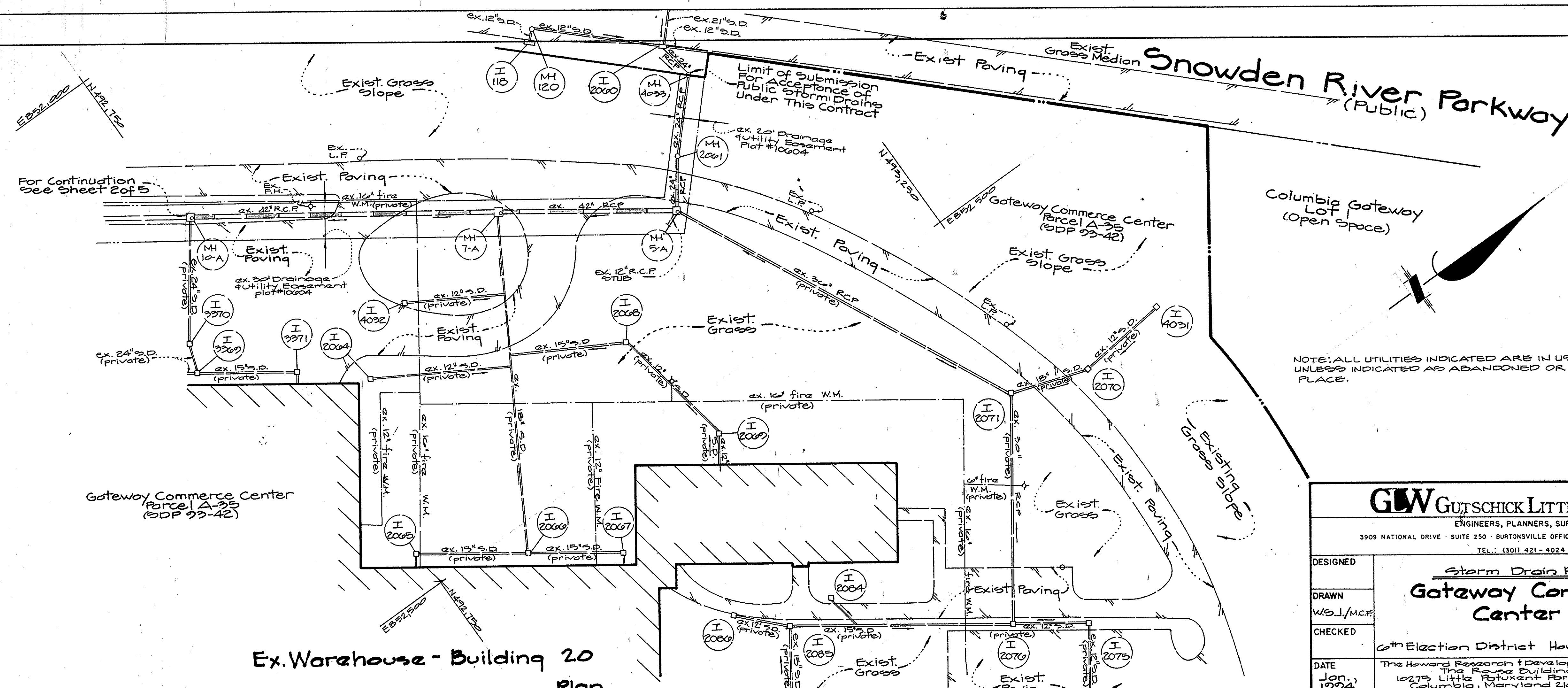
**GLW GUTSCHICK LITTLE & WEBER, P.A.**  
CIVIL ENGINEERS, SURVEYORS, PLANNERS, LANDSCAPE ARCHITECTS  
3909 NATIONAL DRIVE · SUITE 250 · BURTONSVILLE OFFICE PARK · BURTONSVILLE, MD. 20866  
TELEPHONE: (301)421-4024 NO.VA. (301)989-2524 BALTO. (301)880-1820 FAX (301)421-4186

DATE	REVISION	BY	APP'R.

Cover Sheet			
DES.: Phase III Storm Drain Dedication <b>Gateway Commerce Center</b> Sixth Election District	SCALE: 1" = 600'	ZONING: 42	G.L.W. FILE NO.: 91-055
DRN.: W.S.J.	DATE: December 1993	TAX MAP No.:	SHEET: 1 of 5
CHK.:			

F-92-1003(DPW)





Approved  
Department of Public Works  
*Chris Vanaman* 7/17/96  
Chief, Land Development Div. MK Date

*Stephen M. Decker* 12-22-95  
Chief, Bureau of Highways NS Date

*Robert S. Epperson* 7/17/96  
Chief, Bureau of Engineering Date

Approved  
Department of Planning and Zoning  
*Chris Vanaman* 8/12/96  
Chief, Division of Land Development and Research Date

**GW GUTSCHICK LITTLE & WEBER, P.A.**  
ENGINEERS, PLANNERS, SURVEYORS  
3909 NATIONAL DRIVE - SUITE 250 - BURTONSVILLE OFFICE PARK - BURTONSVILLE, MD. 20866  
TEL.: (301) 421-4024

DESIGNED: *Storm Drain Plans*

DRAWN: *W.S.J./M.C.F.*

CHECKED:

DATE: Jan 1994

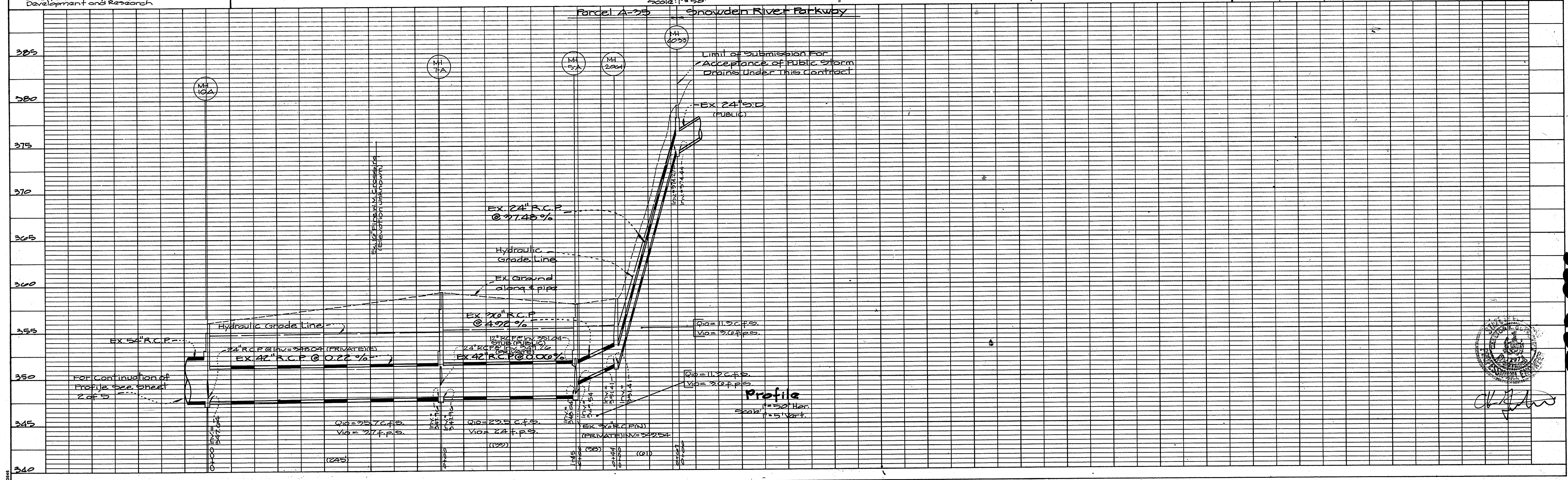
SCALE: AS SHOWN  
DRAWING: 2 of 5

PROJECT: Gateway Commerce Center  
6th Election District Howard County, Md

CLIENT: The Howard Research & Development Corp.  
The Raus Building  
10275 Little Patuxent Parkway  
Columbia, Maryland 21044  
(410) 552-0327

JOB NO. 91-0560

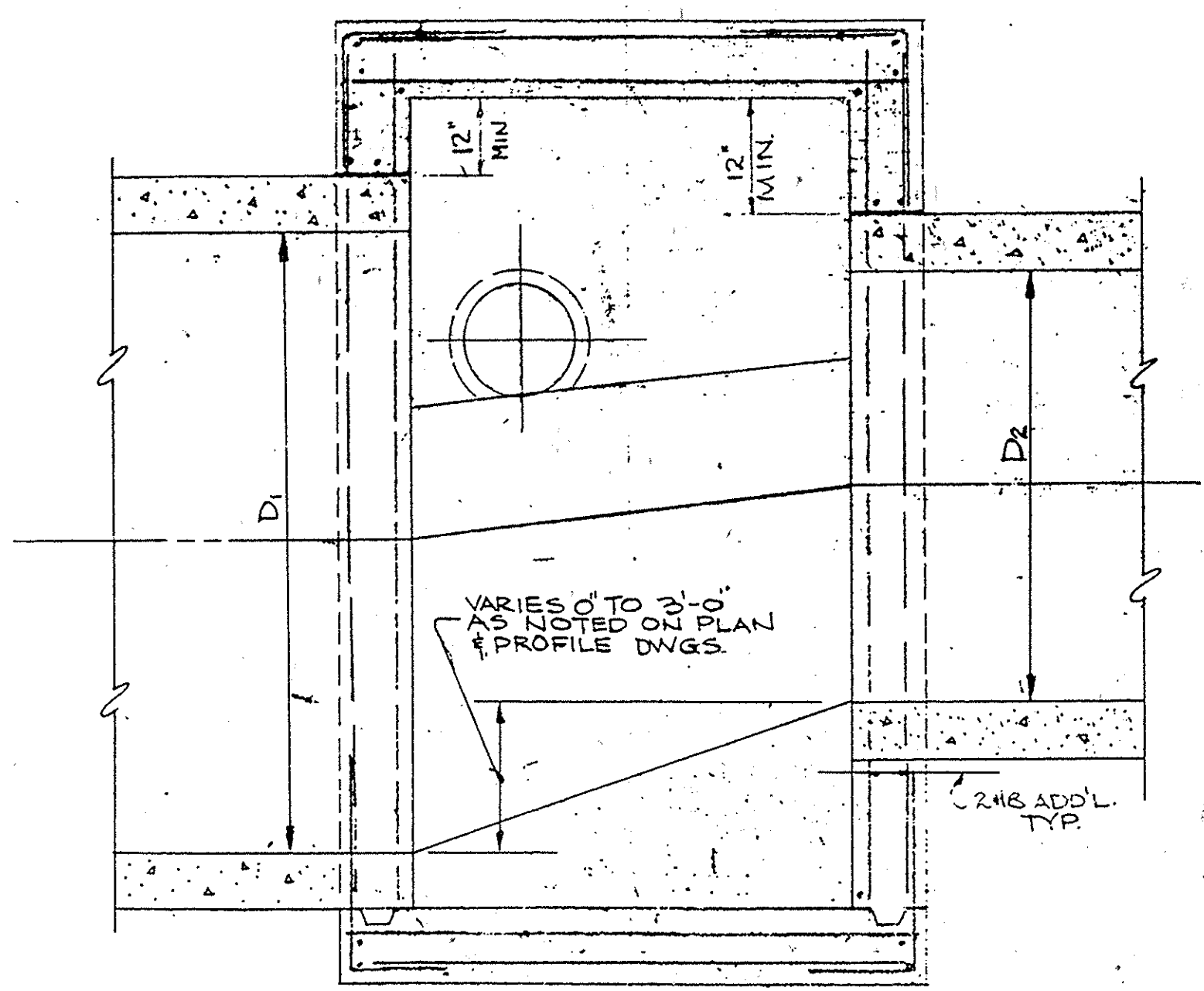
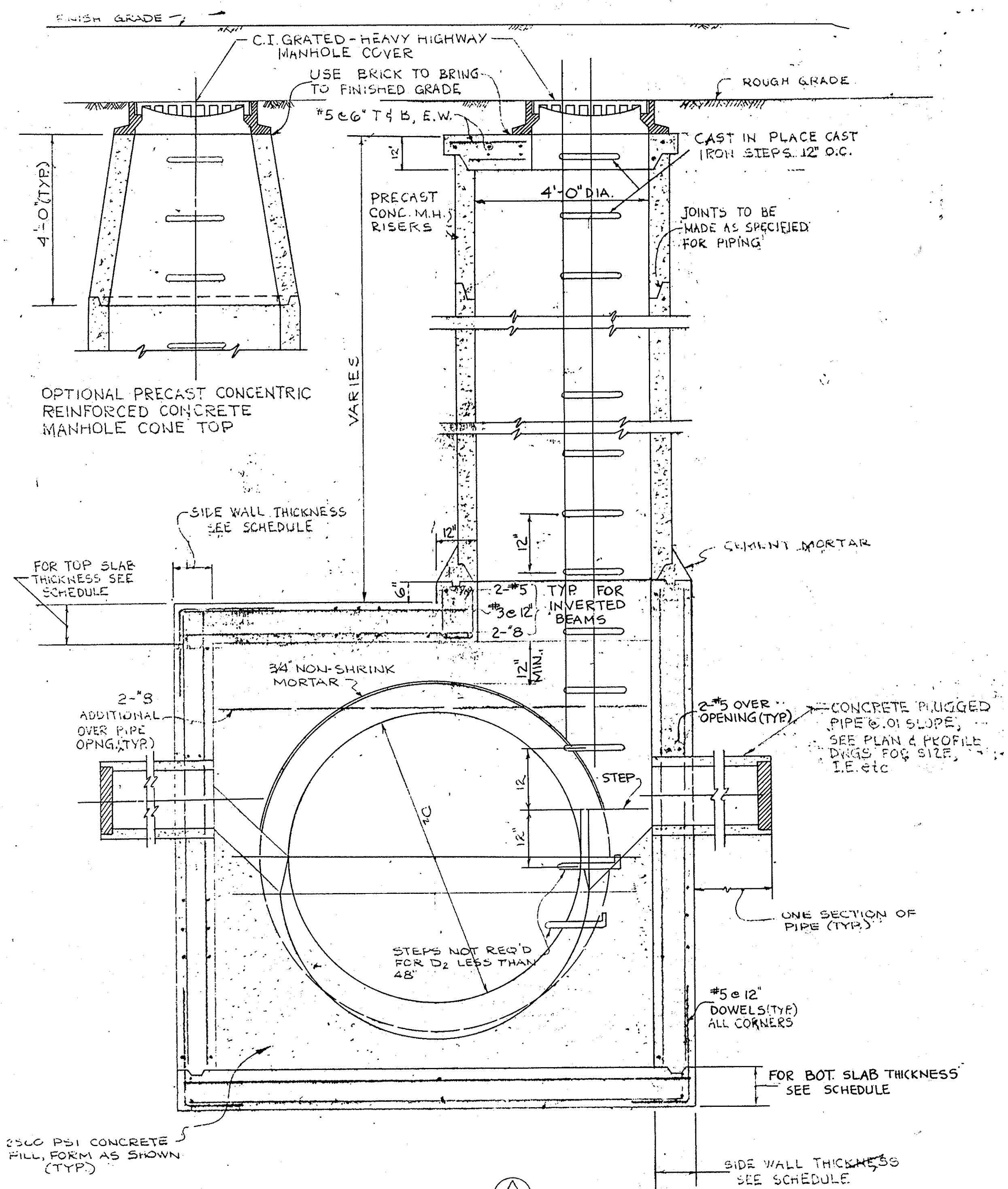
Ex. Warehouse - Building 20  
Plan  
Scale: 1" = 50'



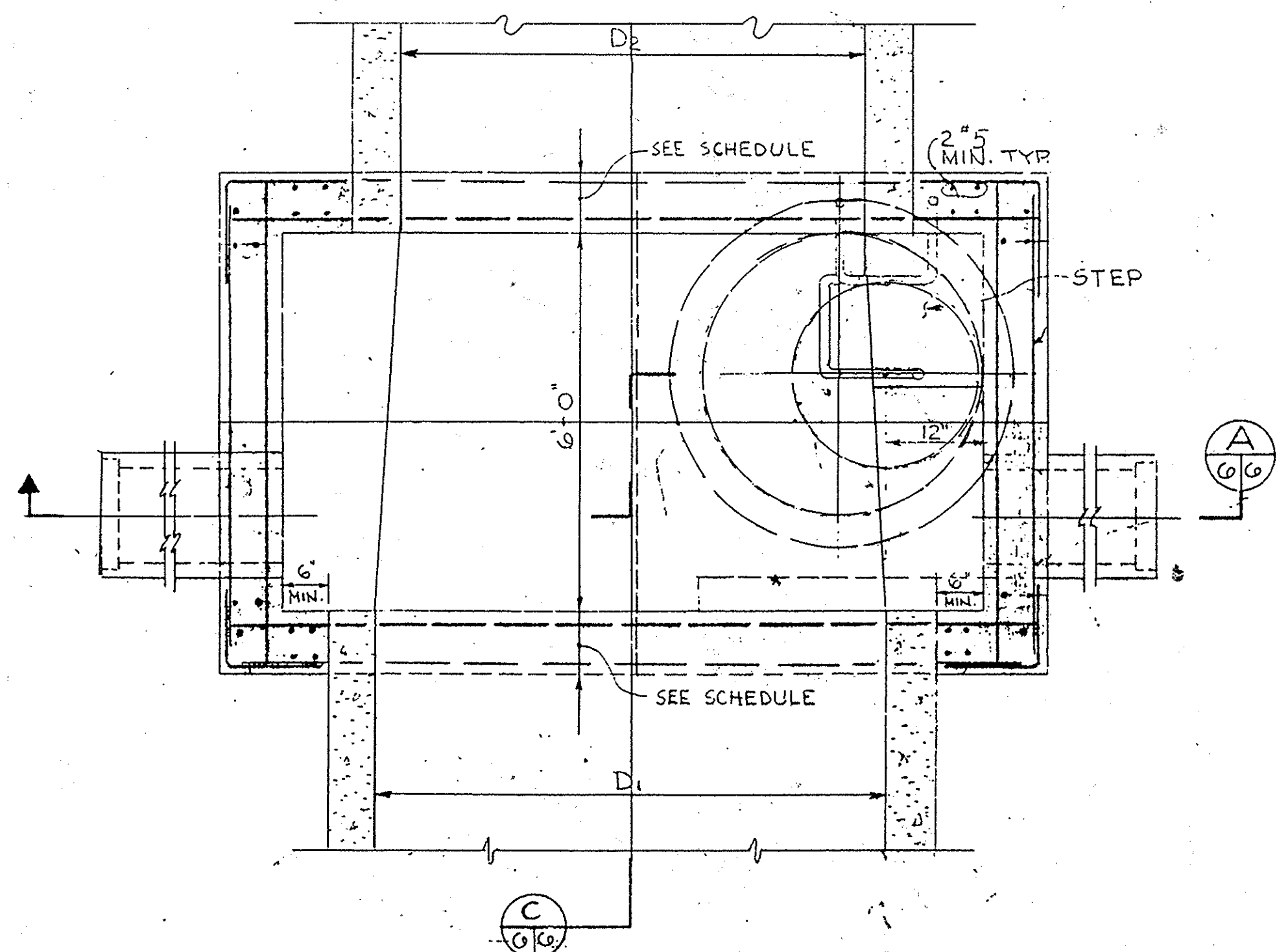
11511

666-263

Structure Schedule					
Structure	Top Elevation	Inv. In.	Inv. Out	North Coordinate	East Coordinate
15A	256.04	246.04	246.04	492207.26	851800.58
2262	257.07	254.20	250.70	492442.20	851849.23
4012	278.20	273.10	273.00	492486.14	851787.07
4013	284.93	273.83	273.77	492502.41	851727.73
12A	256.31	247.55	247.55	492550.17	851995.72
10A	256.09	247.04	247.54	492750.93	852140.00
7A	259.28	247.90	247.90	492901.87	852202.33
5A	257.04	249.54	248.04	493079.19	852365.88
2061	258.51	251.41	251.41	493107.84	852332.33
4033	272.29	274.44	274.27	493153.40	852284.18



SECTION C-C



PLAN

DETAILS OF TYPICAL STORM SEWER MANHOLE  
NO SCALE

TYPE	TOP SLAB		BOTTOM SLAB		SIDE WALLS	
	THICKNESS	STEEL (SS)	THICKNESS	STEEL (SS)	THICKNESS	STEEL (L.F. HOKI2)
A	12"	#6 @ BOT	12"	#7 @ TOP	12"	#5 @
B	12"	#7 @ BOT	14"	#7 @ TOP	12"	#6 @
C	12"	#7 @ BOT	14"	#7 @ TOP	12"	#6 @
D	14"	#7 @ BOT	16"	#7 @ TOP	12"	#7 @
E	16"	#7 @ BOT	16"	#7 @ TOP	12"	#7 @

(SS) INDICATES SHORT SPAN IN MANHOLE.  
ALL STEEL NOT DESIGNATED SHALL BE #5 @ 12".



*CLM*

APPROVED  
DEPARTMENT OF PUBLIC WORKS  
*Chris Drummond* 7/17/96  
CHIEF, LAND DEVELOPMENT DIVISION MK DATE

APPROVED  
*Richard M. Penick* 12-22-95  
CHIEF, BUREAU OF HIGHWAYS HS DATE

APPROVED  
DEPARTMENT OF PUBLIC WORKS  
*Paul J. Segan* 7/17/96  
CHIEF, BUREAU OF ENGINEERING DATE

APPROVED  
OFFICE OF PLANNING AND ZONING  
*Jim Surrin* 8/27/96  
CHIEF DIVISION OF LAND DEVELOPMENT and Research DATE

Gateway Commerce Center  
SIXTH ELECTION DISTRICT  
HOWARD COUNTY, MARYLAND

**STORM DRAINS**  
PLAN AND PROFILE

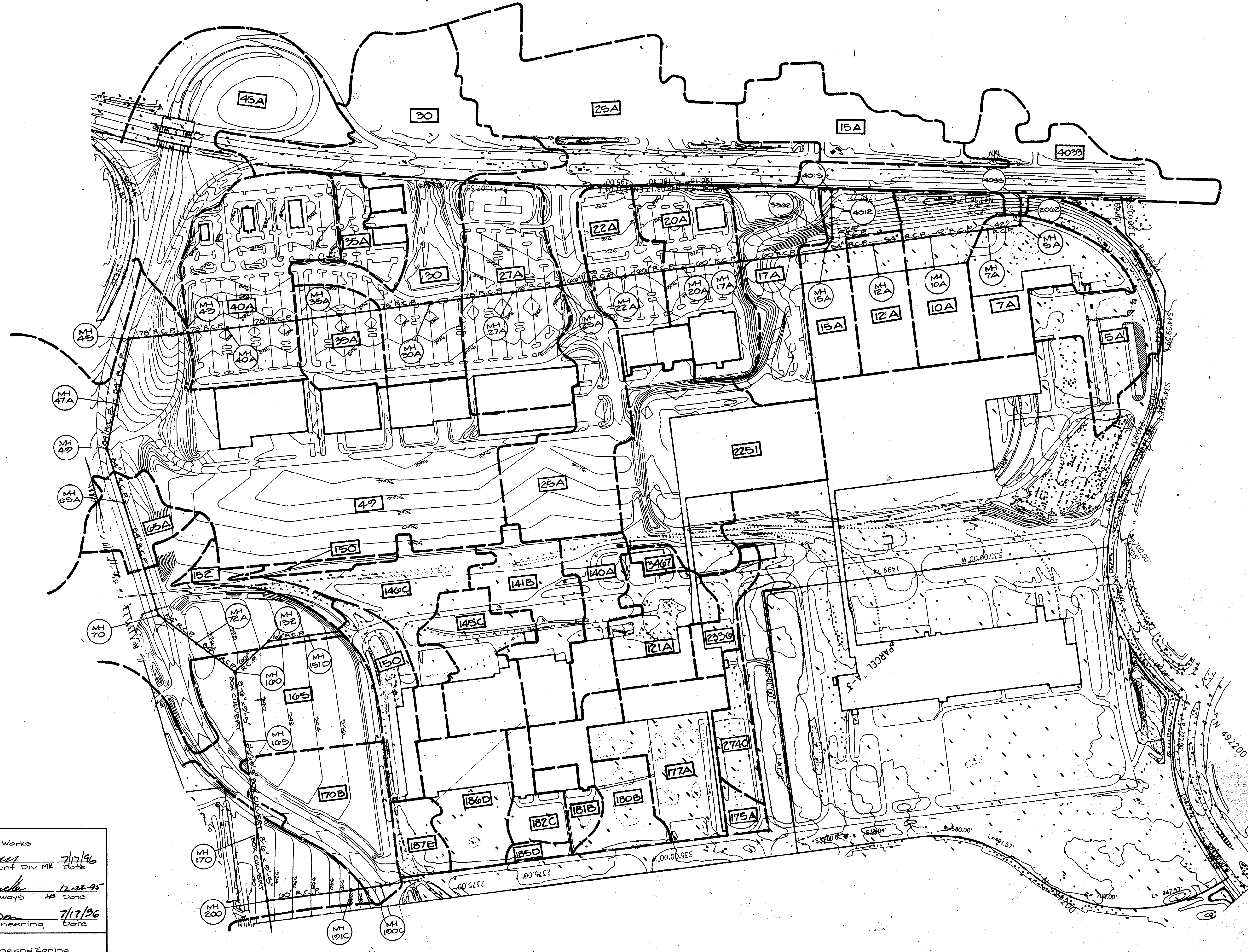
OWNER AND DEVELOPER  
HOWARD RESEARCH AND DEVELOPMENT CO.,P.  
10275 LITTLE PATUXENT PARKWAY  
COLUMBIA, MARYLAND 21044

NO SCALE DATE: Dec. 1993 DWG. NO. 4 OF 5  
DES. DRN. CHK. M.J.T.

GUTSCHICK, LITTLE & WEBER, P.A.  
CIVIL ENGINEERS, SURVEYORS, PLANNERS &  
LANDSCAPE ARCHITECTS  
3909 NATIONAL DRIVE SUITE 250  
BURTONSVILLE OFFICE PARK BURTONSVILLE, MD 20886

1158

666-2657



Drainage Area	"C"	Acreage
5A	0.27	6.06
7A	0.51	5.51
10A	0.51	4.91
12A	0.62	3.30
15A	0.45	10.48
17A	0.24	5.15
20A	0.65	7.74
22A	0.48	10.21
25A	0.59	28.63
27A	0.56	8.37
30	0.43	16.36
35A	0.56	6.12
40A	0.52	10.99
45A	0.27	16.10
47A	0.12	0.40
49	0.53	62.52
65A	0.28	3.70
72A	0.50	27.99
121A	0.43	4.13
165A	0.51	57.08
170B	0.44	7.14
175A	0.27	0.78
177A	0.46	6.05
180B	0.39	4.29
181B	0.40	1.17
182C	0.34	1.96
185D	0.22	0.49
186D	0.38	4.69
187E	0.22	1.71
200	0.45	8.23
2251	0.58	8.50
2236	0.46	1.91
2740	0.21	2.00
3467	0.52	0.36
4033	0.26	8.04
4013	0.45	5.85
140	0.39	3.89
141B	0.37	5.17
145C	0.39	4.64
146C	0.23	5.28
150	0.32	4.44
152	0.19	1.65



Approved  
 Department of Public Works  
*William D. ...* 7/17/96  
 Chief, Land Development Div. MK Date

*Richard M. ...* 12-22-95  
 Chief, Bureau of Highways HS Date

*William ...* 7/17/96  
 Chief, Bureau of Engineering Date

Approved  
 Department of Planning and Zoning  
*Jim ...* 8/12/96  
 Chief, Division of Land Development and Research Date

**GLW GUTSCHICK LITTLE & WEBER, P.A.**  
 CIVIL ENGINEERS, SURVEYORS, PLANNERS, LANDSCAPE ARCHITECTS  
 3909 NATIONAL DRIVE - SUITE 250 - BURTONSVILLE OFFICE PARK - BURTONSVILLE, MD. 20866  
 TELEPHONE: (301)421-4024 NO.VA. (301)989-2524 BALTO. (301)880-1820 FAX (301)421-4186

DATE	REVISION	BY	APP'R.

PREPARED FOR:  
 Howard Research & Development Corporation  
 10275 Little Patuxent Parkway  
 Columbia, Maryland 21044  
 410-992-6027

**DRAINAGE AREA MAP**  
 Phase III Storm Drain Dedication  
**Gateway Commerce Center**  
 Sixth Election District  
 Howard County, Maryland

DES.:	SCALE	ZONING	G.L.W. FILE NO.
DRN.:	1"=200'		91-055
W.S.J.:	DATE	TAX MAP No.	SHEET
CHK.:	December, 1993	42	5 OF 5

1158

666-243