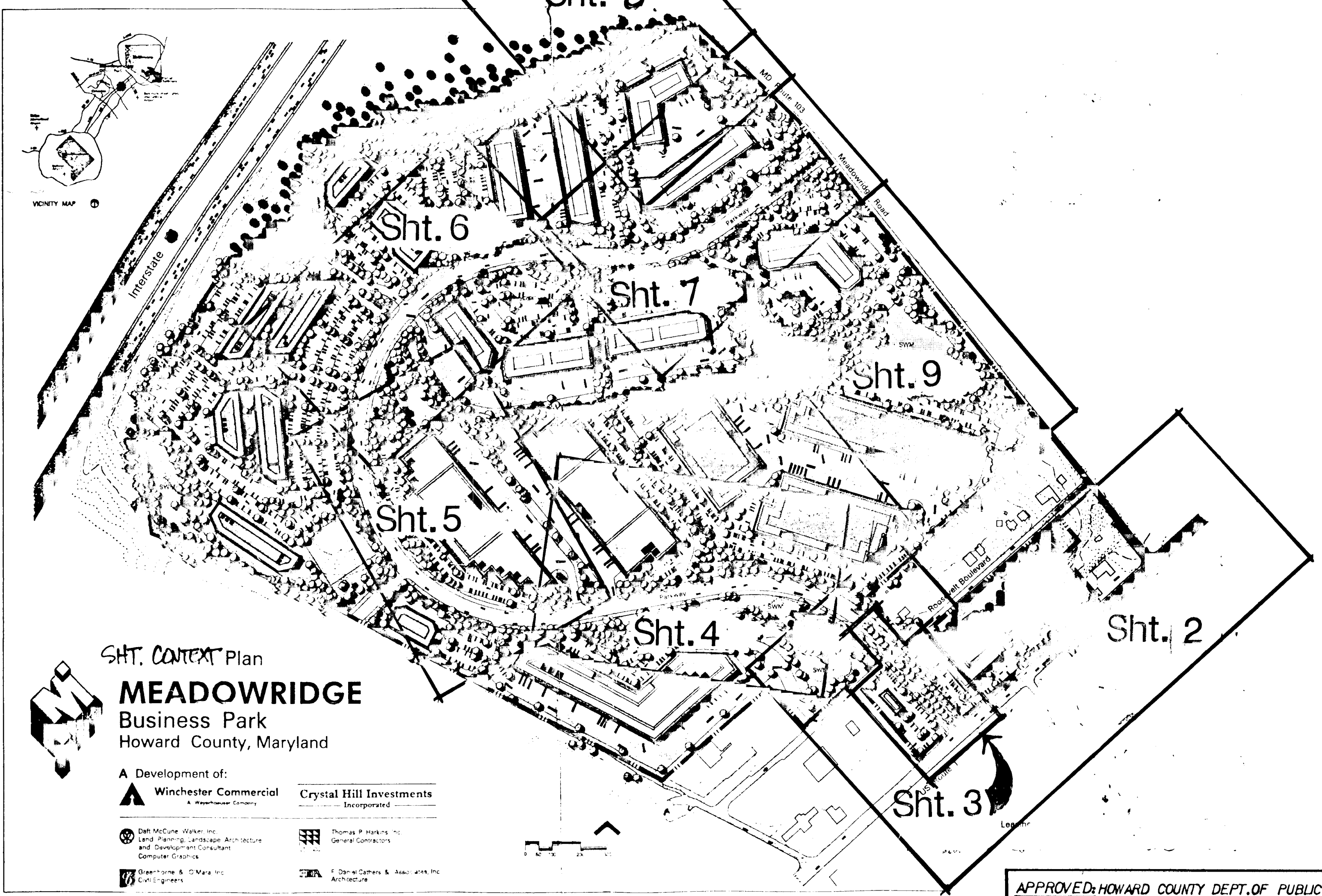


VICINITY MAP



INDEX MAP

NOTE: REFER TO PLANS F-89-163 FOR SEDIMENT CONTROL, UTILITIES, ROAD CONSTRUCTION DWGS, STORM WATER MANAGEMENT AND GRADING PLANS.

Note: No street tree shall be planted closer than 6 feet to back of curb. All trees shall be installed after installation of BG&E and C&P lines whenever possible. No street trees will be planted within 5 feet of any utility structure.

OWNER/DEVELOPER
MEADOWRIDGE INDUSTRIAL PARTNERSHIP
10005 OLD COLUMBIA ROAD
COLUMBIA, MARYLAND 21046
PH. (301) 381-4444

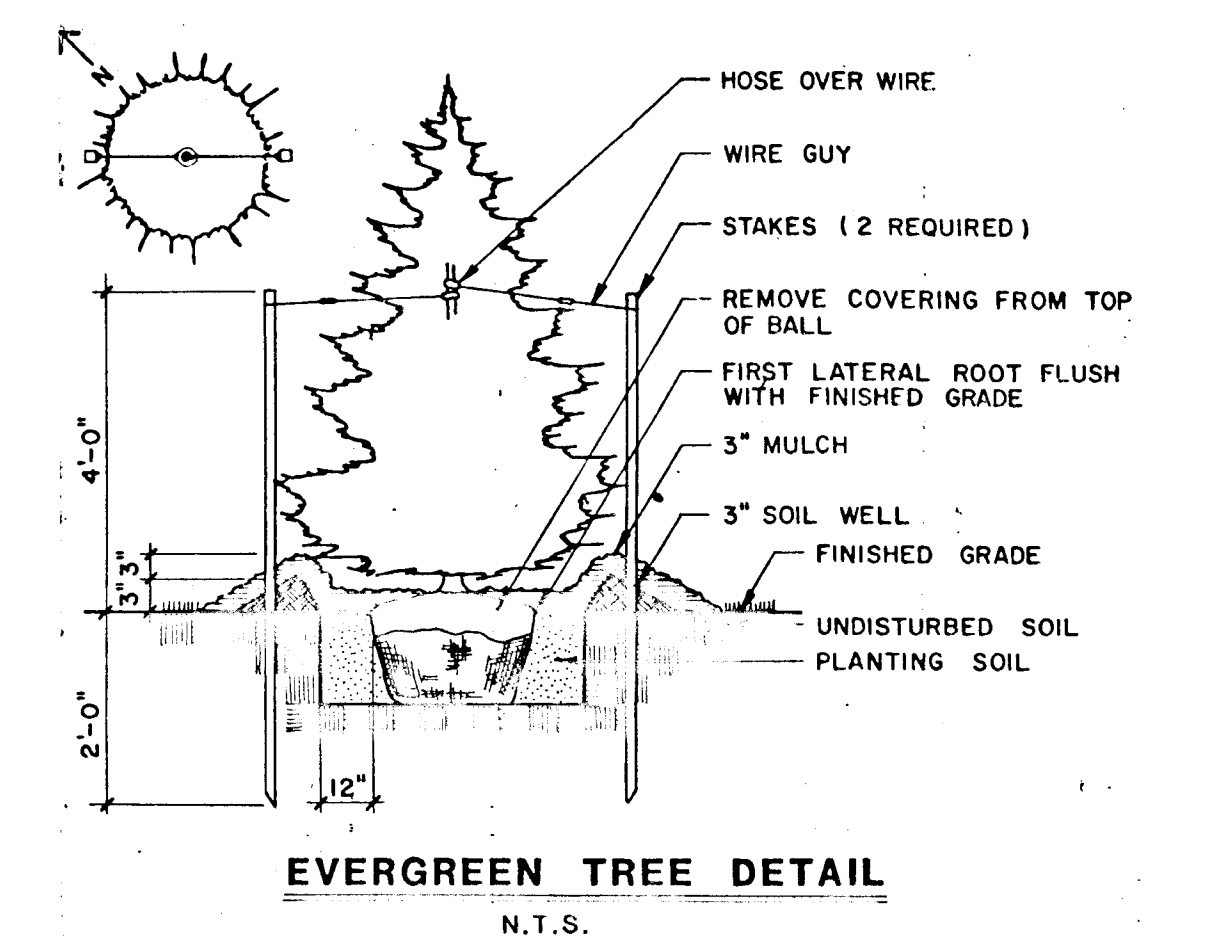
NO.	REVISION	DATE	BY
1	CHANGE SHEETS 21-39 TO 1-9	4/27/90	TTB
2	REVISE INDEX MAP ID & MARK SHEETS	5/11/90	TTB

APPROVED: HOWARD COUNTY DEPT. OF PUBLIC WORKS
CHIEF, BUREAU OF ENGINEERING
DATE: 2/14/90
CHIEF, BUREAU OF HIGHWAYS
DATE: 7/13/90

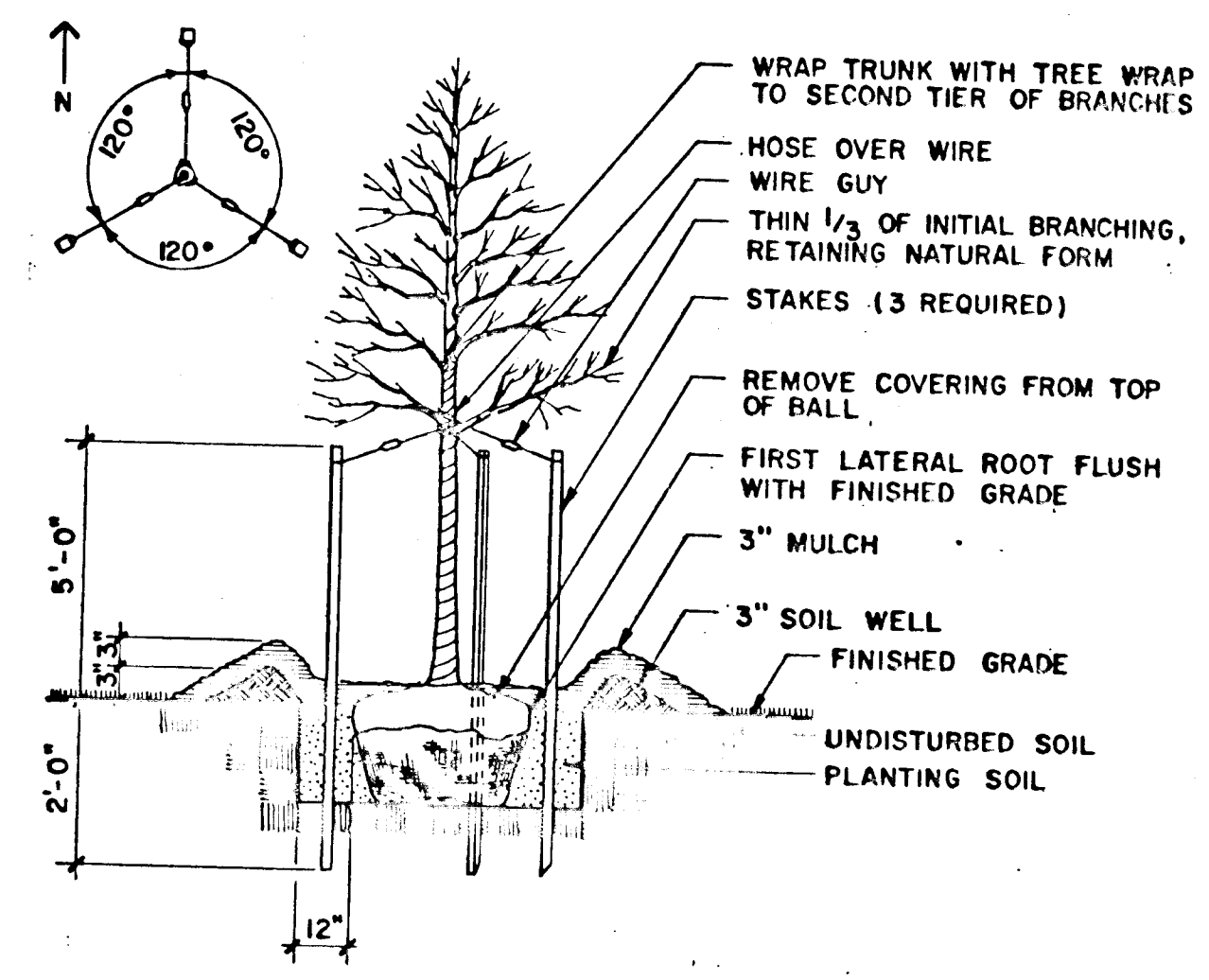
APPROVED: HOWARD COUNTY DEPT. OF PLANNING & ZONING
CHIEF, DIV. OF COMMUNITY PLANNING AND LAND DEVELOPMENT
DATE: 2/2/90

MASTER PLANT LIST

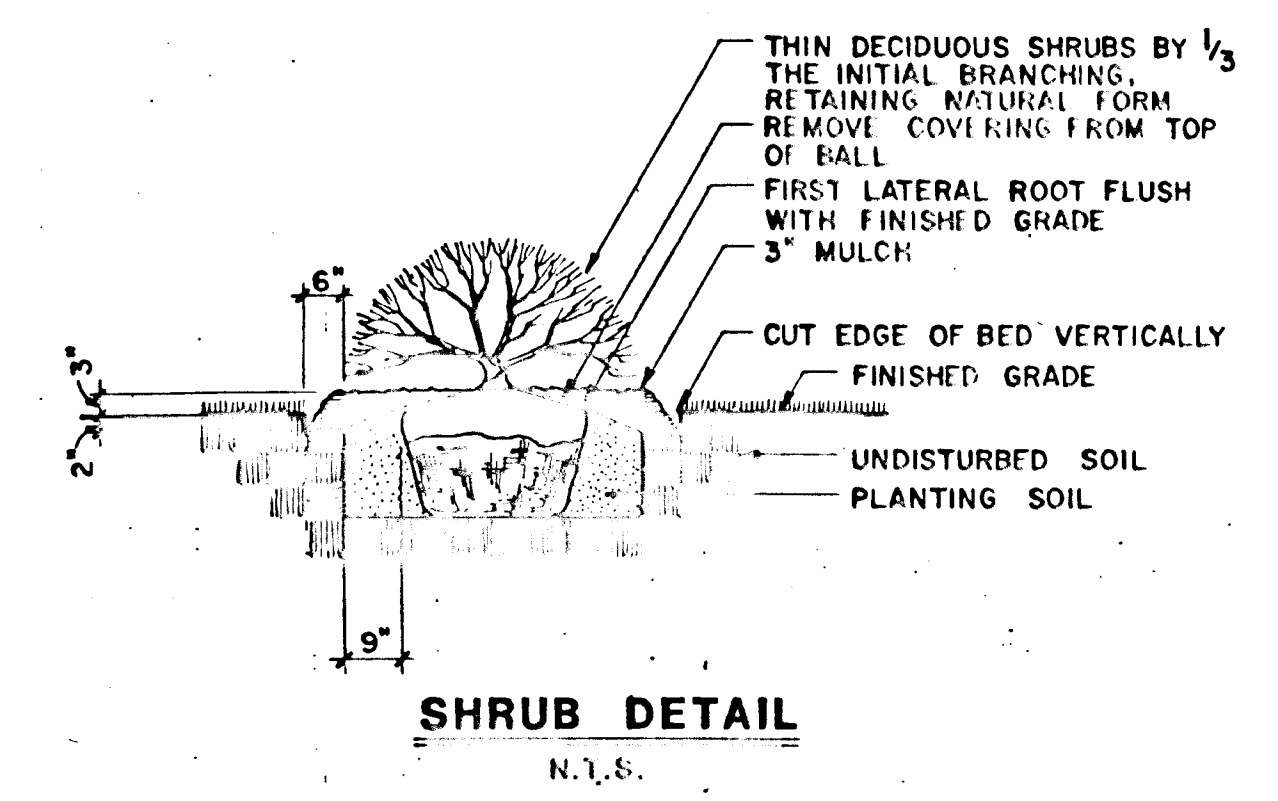
Canopy Trees				
KEY	BOTANICAL NAME/ COMMON NAME	SIZE	ROOT	REMARKS
T-1	ACER RUBRUM 'OCTOBER GLORY' OCTOBER GLORY MAPLE	2-1/2"-3"	B&B	
T-2	ACER SACCHARUM 'GREEN MOUNTAIN' GREEN MOUNTAIN SUGAR MAPLE	2-1/2"-3"	B&B	
T-3	LIQUIDAMBAR STYRACIFLUA SWEETGUM	2-1/2"-3"	B&B	
T-4	PLATANUS X ACERIFOLIA 'BLOODGOOD' LONDON PLANE TREE	2-1/2"-3"	B&B	
T-5	QUERCUS PALUSTRIS PIN OAK	2-1/2"-3"	B&B	
T-6	ZELKOVA SERRATA VILLAGE GREEN VILLAGE GREEN ZELKOVA	2-1/2"-3"	B&B	
Specimen Trees				
KEY	BOTANICAL NAME/ COMMON NAME	SIZE	ROOT	REMARKS
ST-1	LIQUIDAMBAR STYRACIFLUA SWEETGUM	4-1/2"-5"	B&B	
SF-1	MALUS AMERICAN BEAUTY AMERICAN BEAUTY CRABAPPLE	4"-4-1/2"	B&B	
SF-2	MALUS PURPUREA ELEYI ELEYI CRABAPPLE	4"-4-1/2"	B&B	
Evergreen Trees				
KEY	BOTANICAL NAME/ COMMON NAME	SIZE	ROOT	REMARKS
E-1	PINUS STROBUS EASTERN WHITE PINE	10'-12'	B&B	
Flowering Trees				
KEY	BOTANICAL NAME/ COMMON NAME	SIZE	ROOT	REMARKS
F-1	MALUS 'AMERICAN BEAUTY' AMERICAN BEAUTY CRABAPPLE	2"-2-1/2"	B&B	
F-2	MALUS PURPUREA ELEYI ELEYI CRABAPPLE	2"-2-1/2"	B&B	
F-3	MALUS HOPA HOPA RED FLOWERING CRABAPPLE	2"-2-1/2"	B&B	
F-4	PRUNUS YEDOENSIS YOSHINO CHERRY	2"-2-1/2"	B&B	
F-5	PRUNUS SERRULATA KWANZAN KWANZAN CHERRY	2"-2-1/2"	B&B	HEAVY
F-6	PYRUS CALLERYANA BRADFORD BRADFORD PEAR	2"-2-1/2"	B&B	
Shrubs				
KEY	BOTANICAL NAME/ COMMON NAME	SIZE	ROOT	REMARKS
S-1	TAXUS BACGATTA REPANDENS SPREADING YEW	2-1/2'-3'	B&B	HEAVY 3' O.C.
Ground Cover				
KEY	BOTANICAL NAME/ COMMON NAME	SIZE	ROOT	REMARKS
GC-1	BUONOMOUS FORTUNEI COLORATUS PURPLE LEAF WINTER CREEPER	9"-12"	1-1/2" POTS	12" O.C.
Perennials				
KEY	BOTANICAL NAME/ COMMON NAME	SIZE	ROOT	REMARKS
P-3	CROCUS VERNUS GIANT PURPLE GIANT PURPLE CROCUS		BULBS	HAND BROADCAST UNDER SOD
Seasonal Flower Bed				
KEY	BOTANICAL NAME/ COMMON NAME	SIZE	ROOT	REMARKS
FALL	YELLOW MIMS	8" POTS	12" O.C.	
SPRING	KING ALFRED TULIPS	BULBS	6" O.C.	
SUMMER	GERANIUMS	6" POTS	12" O.C.	



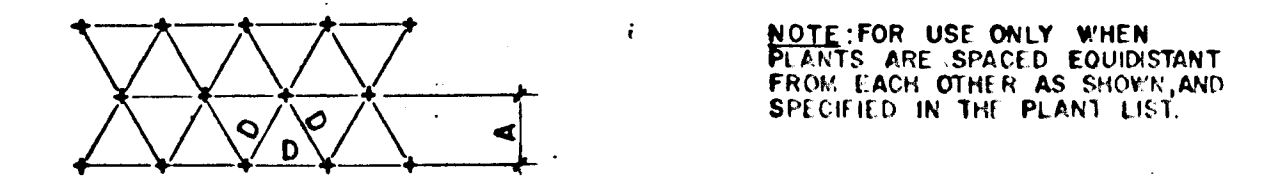
EVERGREEN TREE DETAIL
N.T.S.



DECIDUOUS TREE DETAIL
N.T.S.



SHRUB DETAIL
N.T.S.



NOTE: FOR USE ONLY WHEN PLANTS ARE SPACED EQUIDISTANT FROM EACH OTHER AS SHOWN AND SPECIFIED IN THE PLANT LIST.

SPACING "D"	ROW "A"	NO. OF PLANTS / S.F.
6" O.C.	5.20"	4.61
8" O.C.	6.93"	2.60
10" O.C.	8.66"	1.66
12" O.C.	10.40"	1.15
15" O.C.	13.00"	.738
18" O.C.	15.60"	.512
24" O.C.	20.80"	.290
30" O.C.	26.00"	.185
36" O.C.	30.00"	.128

PLANT SPACING CHART

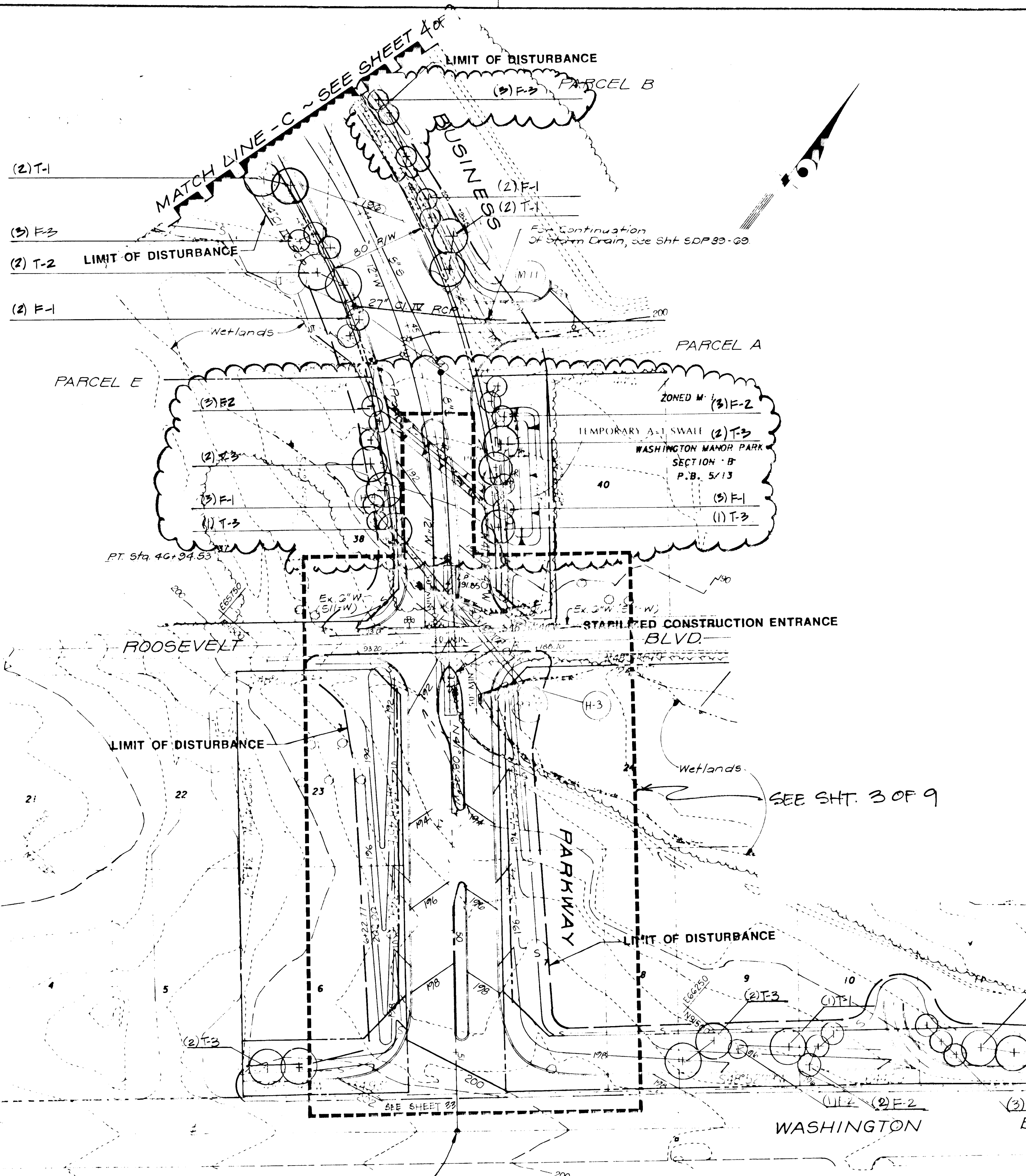
NOTE: THESE SHEETS (1 THROUGH 9) ARE INTENDED ONLY FOR THE INSTALLATION OF LANDSCAPING AS SHOWN.

DAFT · McCUNE · WALKER INC.
LAND PLANNING CONSULTANTS
LANDSCAPE ARCHITECTS
ENGINEERS & SURVEYORS
200 E. PENNSYLVANIA AVE.
TOWSON, MD. 21284
TELEPHONE: (301) 296-3333



ENGINEERS · ARCHITECTS · PLANNERS · SCIENTISTS · SURVEYORS · PHOTOGRAMMETRISTS
GRFENHORNE & O'MARA, INC.
113 WEST ROAD, SUITE 208, BALTIMORE, MARYLAND 21204
(301) 296-4100
ANNAPOLIS, MD · ATLANTA, GA · AURORA, CO · CULPEPER, VA · DULUTH, GA · EXPORT, PA · FAIRFAX, VA · GREENBELT, MD
LEESBURG, VA · MANASSAS, VA · ORLANDO, FL · RALEIGH, NC · ROCKVILLE, MD · TAMPA, FL · WEST PALM BEACH, FL

PLANT LIST, DETAILS, TITLE SHEET
MEADOWRIDGE BUSINESS PARK
LIBER 1419, FOLIO 500 TAX MAPS 37 & 43, P. 177, 178, 362, P/O 375
WASHINGTON MANOR PARK LOTS 6-13, 24-28, 35-39, 42, 45, 46, 49
ZONE 1 M-1 ZONING MAPS 37-43 HOWARD CO., MARYLAND
Sht. 1 of 9



PLANT LIST
(This sheet only)

Canopy Trees		BOTANICAL NAME/ COMMON NAME	SIZE	ROOT	REMARKS
T-1	7	ACER RUBRUM 'OCTOBER GLORY' OCTOBER GLORY MAPLE	2'-1/2"-3"	B&B	
T-2	4	ACER SACCHARUM 'GREEN MOUNTAIN' GREEN MOUNTAIN SUGAR MAPLE	2'-1/2"-3"	B&B	
T-3	12	LIQUIDAMBAR STRYACIFLUA SWEETGUM	2'-1/2"-3"	B&B	

Flowering Trees		BOTANICAL NAME/ COMMON NAME	SIZE	ROOT	REMARKS
F-1	14	MALUS 'AMERICAN BEAUTY' AMERICAN BEAUTY CRABAPPLE	2"-2-1/2"	B&B	
F-2	12	MALUS PURPUREA ELEYI ELEYI CRABAPPLE	2"-2-1/2"	B&B	
F-3	6	MALUS HOPEA HOPEA RED FLOWERING CRABAPPLE	2"-2-1/2"	B&B	

APPROVED: HOWARD COUNTY DEPT. OF PUBLIC WORKS

CHIEF, BUREAU OF ENGINEERING: *[Signature]* DATE: 7/23/90

CHIEF, LAND DEVELOPMENT: *[Signature]* DATE: 7/13/90

APPROVED: HOWARD COUNTY DEPT. OF PLANNING & ZONING

CHIEF, DIV. OF COMMUNITY PLANNING AND LAND DEVELOPMENT: *[Signature]* DATE: 7/13/90

NOTE: REFER TO PLANS F-89-163 FOR SEDIMENT CONTROL, UTILITIES, ROAD CONSTRUCTIONS DWGS, STORM WATER MANAGEMENT AND GRADING DWGS.

Reviewed for HOWARD COUNTY S.O.D. and meets technical requirements. Date: 5/29/90. Signature: *[Signature]* U.S. Soil Conservation Service

THIS DEVELOPMENT PLAN IS APPROVED FOR SOIL EROSION AND SEDIMENT CONTROL BY THE HOWARD SOIL CONSERVATION DISTRICT. Approved: *[Signature]* Date: 5/29/90. Howard S.C.D.

DAFT MCCUNE WALKER INC. LAND PLANNING CONSULTANTS, LANDSCAPE ARCHITECTS, ENGINEERS & SURVEYORS. 200 E. PENNSYLVANIA AVE. TOWSON, MD. 21204. TELEPHONE: (301) 296-3333

Note: No street tree shall be planted closer than 6 feet to back of curb. All trees shall be installed after installation of B&B and C&P lines whenever possible. No street trees will be planted within 5 feet of any utility structure. NOTE: THESE SHEETS (1 THROUGH 9) ARE INTENDED ONLY FOR THE INSTALLATION OF LANDSCAPING AS SHOWN.

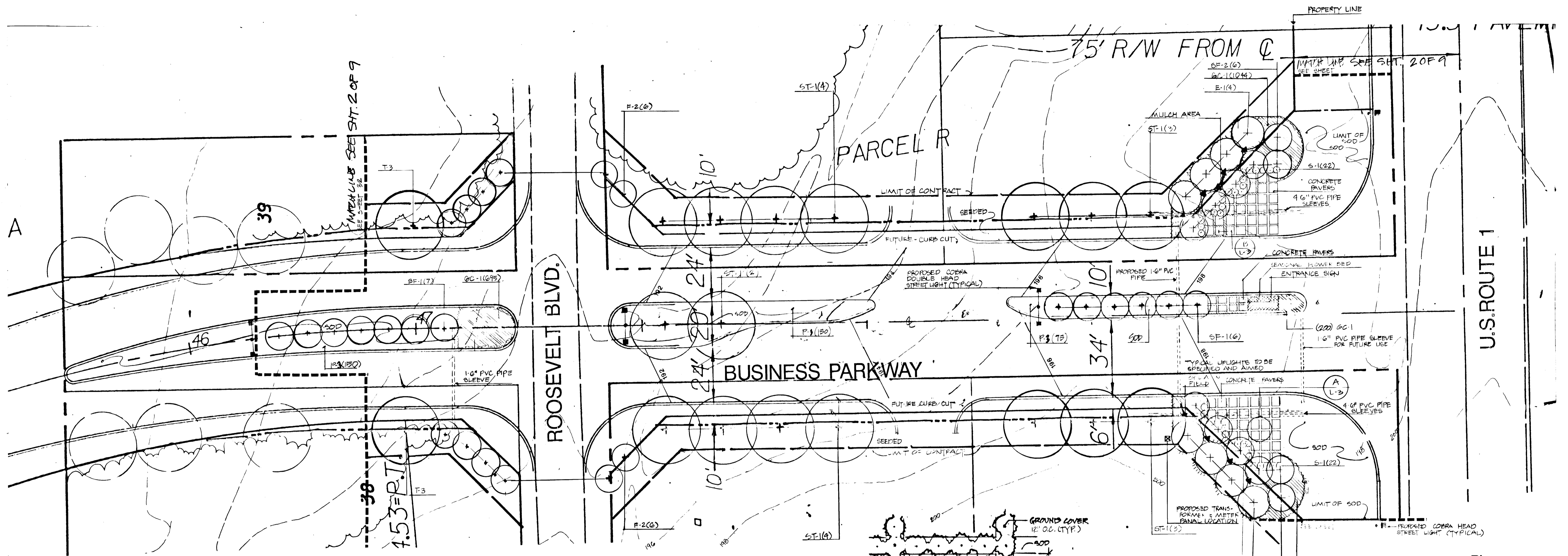
OWNER/DEVELOPER: MEADOWRIDGE INDUSTRIAL PARTNERSHIP, 10005 OLD COLUMBIA ROAD, COLUMBIA, MARYLAND 21046, PH. (301) 381-4444

NO.	REVISION	DATE
1	ADDITIONAL PLANTING ADJUSTMENTS FOR UTILITIES	2-19-90 FFF
2	REMOVED CURB AND ROW.	6-20-90 MWD

ENGINEERS • ARCHITECTS • PLANNERS • SCIENTISTS • SURVEYORS • PHOTOGRAMMETRISTS
GREENHORNE & O'MARA, INC.
113 WEST ROAD, SUITE 208, BALTIMORE, MARYLAND 21204
(301) 296-4100
ANNAPOLIS, MD • ATLANTA, GA • AURORA, CO • CULPEPER, VA • DULUTH, GA • EXPORT, PA • FAIRFAX, VA • GREENBELT, MD • LEESBURG, VA • MANASSAS, VA • ORLANDO, FL • RALEIGH, NC • ROCKVILLE, MD • TAMPA, FL • WEST PALM BEACH, FL

BUSINESS PARKWAY STREET TREES
MEADOWRIDGE BUSINESS PARK
LIBER 1419, FOLIO 500 TAX MAPS 37 & 43, P. 177, 178, 362, P/O 375
WASHINGTON MANOR PARK LOTS 6-13, 24-28, 35-39, 42, 45, 46, 49
ZONE: M-1
1st. ELECTION DISTRICT
ZONING MAPS 37-43
HOWARD CO., MARYLAND
Sht. 2 of 9

Note: No street tree shall be planted closer than 6 feet to back of curb. All trees shall be installed after installation of BG&E and C&P lines whenever possible. No street trees will be planted within 5 feet of any utility structure.



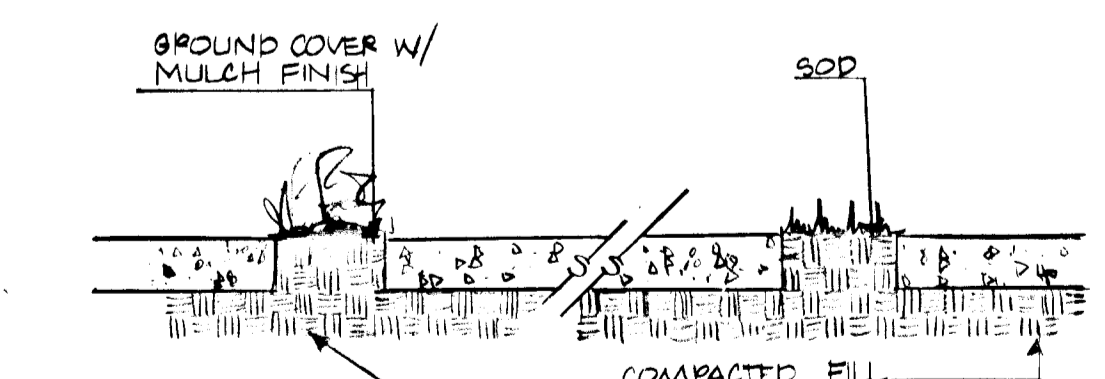
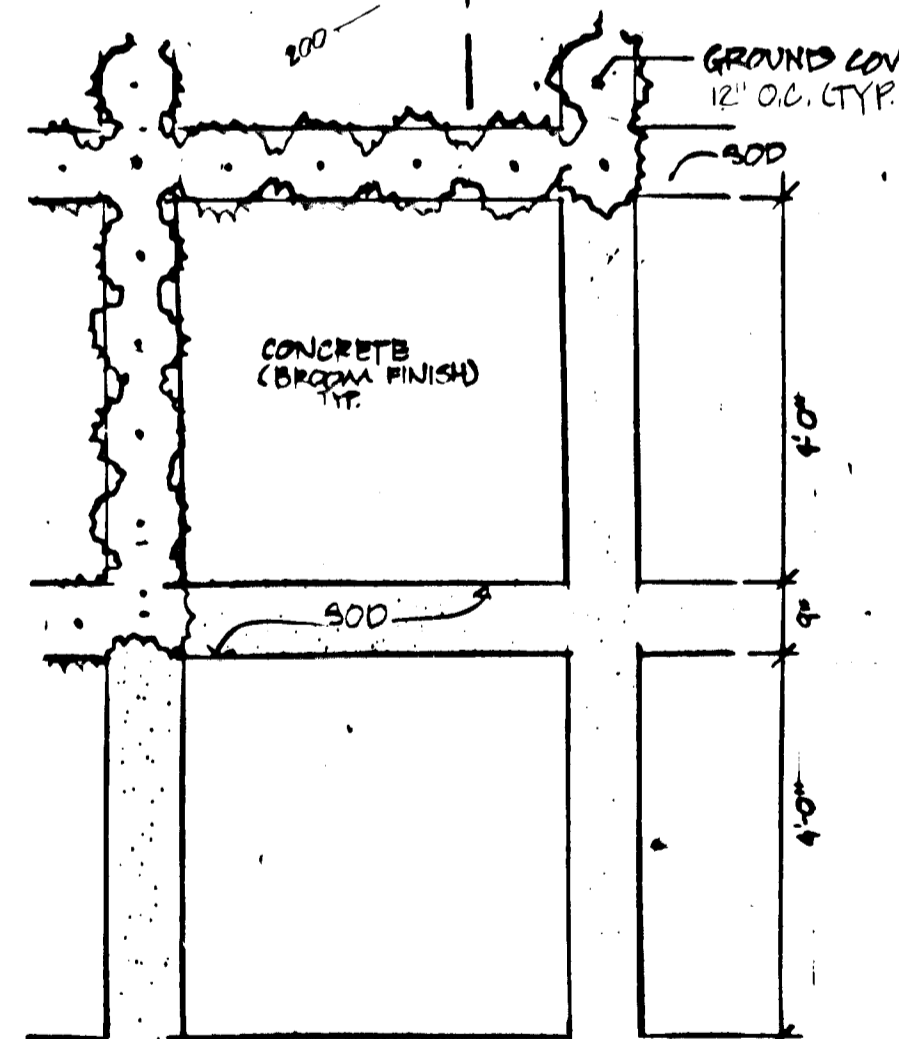
U.S. ROUTE 1

Plan
Scale: 1"=20'

PLANT LIST
(This sheet only)

KEY QUANTITY	BOTANICAL NAME/ COMMON NAME	SIZE	ROOT	REMARKS
Canopy Trees				
T-3	2 LIQUIDAMBAR STRYACIFLUA SMERTTUM	2-1/2"-3"	B&B	
Specimen Trees				
ST-1	10 LIQUIDAMBAR STRYACIFLUA SMERTTUM	4-1/2"-5"	B&B	
SF-1	15 MALUS AMERICAN BEAUTY AMERICAN BEAUTY CRABAPPLE	4"-4-1/2"	B&B	
SF-2	12 MALUS PURPUREA ELEYI ELEYI CRABAPPLE	4"-4-1/2"	B&B	
Evergreen Trees				
E-1	8 PINUS STROBUS EASTERN WHITE PINE	10'-12'	B&B	F&L SHAPE
Flowering Trees				
F-2	8 MALUS PURPUREA ELEYI ELEYI CRABAPPLE	2"-2-1/2"	B&B	

KEY QUANTITY	BOTANICAL NAME/ COMMON NAME	SIZE	ROOT	REMARKS
Shrubs				
S-1	44 TAXUS BACCATTA REPANDENS SPREADING YEW	2-1/2"-3"	B&B	HEAVY 3' O.C.
Ground Cover				
GC-1	4-325 EUNYTHOS FORTUNEI COLORATUS PURPLE LEAF WINTER CREEPER	9"-12"	1-1/2" POTS	12" O.C.
Perennials				
P-3	900 CROCUS VERSUS GIANT PURPLE GIANT PURPLE CROCUS		BULBS	BAND BROADCASTED UNDER SOD
Seasonal Flower Bed				
FALL	180 YELLOW NERIS	8" POTS	12" O.C.	
SPRING	553 KING ALFRED TULIPS	BULBS	6" O.C.	
SUMMER	180 GERANIUMS	6" POTS	12" O.C.	
Sod				
				1,070 S.F. of sod (see specifications)



NOTE: REVISED CURB ALIGNMENT AND ROW AND PLANTING

NOTE: REFER TO PLANS F-89.163 FOR SEDIMENT CONTROL UTILITIES, ROAD CONSTRUCTION, STORM WATER MANAGEMENT AND GRADING WORKS.

NOTE: THESE SHEETS (1 THROUGH 9) ARE INTENDED ONLY FOR THE INSTALLATION OF LANDSCAPING AS SHOWN.

APPROVED: HOWARD COUNTY DEPT. OF PUBLIC WORKS
 CHIEF, BUREAU OF ENGINEERING
 DATE 7/25/90
 APPROVED: HOWARD COUNTY DEPT. OF PLANNING & ZONING
 CHIEF, DIV. OF COMMUNITY PLANNING AND LAND DEVELOPMENT
 DATE 8/2/90

OWNER/DEVELOPER
 MEADOWRIDGE INDUSTRIAL PARTNERSHIP
 10005 OLD COLUMBIA ROAD
 COLUMBIA, MARYLAND 21046
 PH. (301) 381-4444

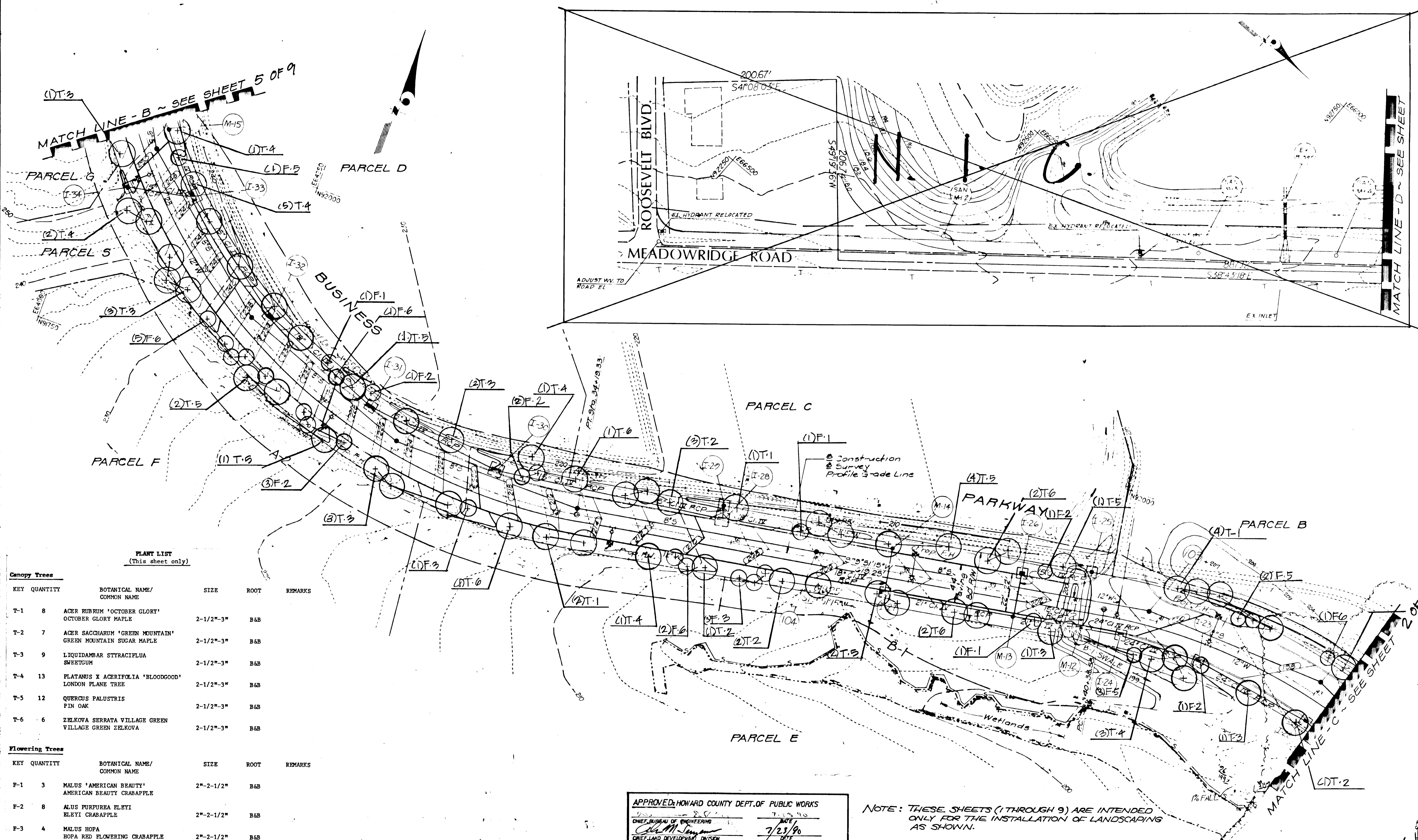
No	REVISION	DATE	BY
	REVISED CURB, F.O.W., AND PLANTING	4/26/90	MAW



ENGINEERS • ARCHITECTS • PLANNERS • SCIENTISTS • SURVEYORS • PHOTOGRAMMETRISTS
GREENHORNE & O'MARA, INC.
 113 WEST ROAD, SUITE 208, BALTIMORE, MARYLAND 21204
 (301) 296-4100
 ANNAPOLIS MD • ATLANTA GA • AURORA CO • CULPEPER VA • DULUTH GA • EXPORT PA • FAIRFAX VA • GREENBELT MD
 LEESBURG VA • MANASSAS VA • ORLANDO FL • RALEIGH NC • ROCKVILLE MD • TAMPA FL • WEST PALM BEACH FL

US ROUTE 1 ENTRANCE
MEADOWRIDGE BUSINESS PARK
 LIBER 1419, FOLIO 500 TAX MAPS 37 & 43, P. 177, 178, 362, P/O 375
 WASHINGTON MANOR PARK LOTS 6-13, 24-28, 35-39, 42, 45, 46, 49
 ZONE M-1
 1ST. ELECTION DISTRICT
 ZONING MAPS 37-43
 HOWARD CO., MARYLAND
 Sht. 3 of 9

F-90-176



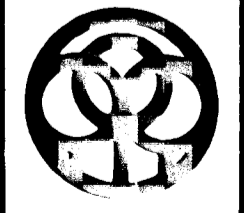
PLANT LIST
(This sheet only)

Canopy Trees					
KEY	QUANTITY	BOTANICAL NAME/ COMMON NAME	SIZE	ROOT	REMARKS
T-1	8	ACER RUBRUM 'OCTOBER GLORY' OCTOBER GLORY MAPLE	2-1/2"-3"	B&B	
T-2	7	ACER SACCHARUM 'GREEN MOUNTAIN' GREEN MOUNTAIN SUGAR MAPLE	2-1/2"-3"	B&B	
T-3	9	LIQUIDAMBAR STYRACIFLUA SWEETGUM	2-1/2"-3"	B&B	
T-4	13	PLATANUS X ACERIFOLIA 'BLOODGOOD' LONDON PLANE TREE	2-1/2"-3"	B&B	
T-5	12	QUERCUS PALUSTRIS PIN OAK	2-1/2"-3"	B&B	
T-6	6	ZELKOVA SERRATA VILLAGE GREEN VILLAGE GREEN ZELKOVA	2-1/2"-3"	B&B	
Flowering Trees					
KEY	QUANTITY	BOTANICAL NAME/ COMMON NAME	SIZE	ROOT	REMARKS
F-1	3	MALUS 'AMERICAN BEAUTY' AMERICAN BEAUTY CRABAPPLE	2"-2-1/2"	B&B	
F-2	8	MALUS PURPUREA ELEYI ELEYI CRABAPPLE	2"-2-1/2"	B&B	
F-3	4	MALUS HOPEA HOPEA RED FLOWERING CRABAPPLE	2"-2-1/2"	B&B	
F-5	6	PRUNUS SERRULATA KWANZAN KWANZAN CHERRY	2"-2-1/2"	B&B	HEAVY
F-6	8	PYRUS CALLERYANA BRADFORD BRADFORD PEAR	2"-2-1/2"	B&B	

NOTE: REFER TO PLANS F-89-163 FOR
SEDIMENT CONTROL, UTILITIES, ROAD
CONSTRUCTION, STORM WATER MANAGEMENT
AND GRADING DWGS.

APPROVED: HOWARD COUNTY DEPT. OF PUBLIC WORKS
 DATE: 7/23/90
 CHIEF, BUREAU OF ENGINEERING
 APPROVED: HOWARD COUNTY DEPT. OF PLANNING & ZONING
 DATE: 7/13/90
 CHIEF, DIV. OF COMMUNITY PLANNING AND LAND DEVELOPMENT

NOTE: THESE SHEETS (1 THROUGH 9) ARE INTENDED
ONLY FOR THE INSTALLATION OF LANDSCAPING
AS SHOWN.

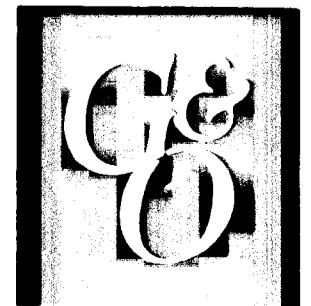


DAFT-McCUNE-WALKER INC.
LAND PLANNING CONSULTANTS
LANDSCAPE ARCHITECTS
ENGINEERS & SURVEYORS
200 E. PENNSYLVANIA AVE.
TOWSON, MD. 21284
TELEPHONE: (301) 298-3333

Note: No street tree shall be planted closer than 6 feet to back of curb. All trees shall be installed after installation of BG&E and C&P lines whenever possible. No street trees will be planted within 5 feet of any utility structure.

OWNER/DEVELOPER
MEADOWRIDGE INDUSTRIAL PARTNERSHIP
10005 OLD COLUMBIA ROAD
COLUMBIA, MARYLAND 21046
PH. (301) 381-4444

No.	REVISION	DATE	BY
1	ISSUED FOR BID	4-12-89	

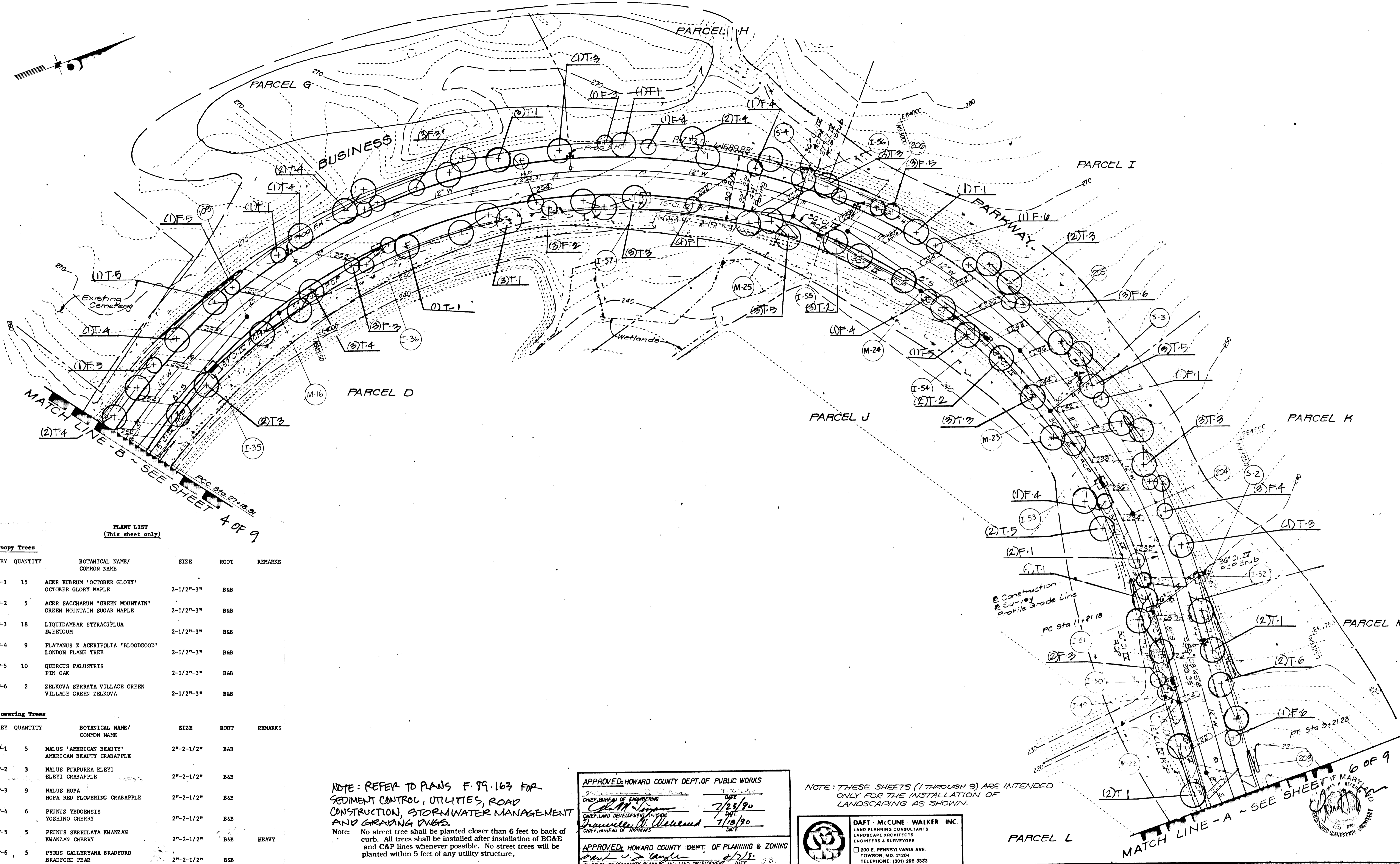


ENGINEERS • ARCHITECTS • PLANNERS • SCIENTISTS • SURVEYORS • PHOTOGRAMMETRISTS
GREENHORNE & O'MARA, INC.
 113 WEST ROAD, SUITE 208, BALTIMORE, MARYLAND 21204
 (301) 296-4100
 ANNAPOLIS, MD • ATLANTA, GA • AURORA, CO • CULPEPPER, VA • DULUTH, GA • EXPORT, PA • FAIRFAX, VA • GREENBELT, MD
 LEESBURG, VA • MANASSAS, VA • ORLANDO, FL • RALEIGH, NC • ROCKVILLE, MD • TAMPA, FL • WEST PALM BEACH, FL

BUSINESS PARKWAY STREET TREES
MEADOWRIDGE BUSINESS PARK

LIBER 1419, FOLIO 500 TAX MAPS 37 & 43, P. 177, 178, 362, P/O 375
 WASHINGTON MANOR PARK LOTS 6-13, 24-28, 35-39, 42, 45, 46, 49
 ZONE: M-1 ZONING MAPS 37-43
 1st. ELECTION DISTRICT HOWARD CO., MARYLAND





PLANT LIST
(This sheet only)

Canopy Trees					
KEY	QUANTITY	BOTANICAL NAME/ COMMON NAME	SIZE	ROOT	REMARKS
T-1	15	ACER RUBRUM 'OCTOBER GLORY' OCTOBER GLORY MAPLE	2-1/2"-3"	B&B	
T-2	5	ACER SACCHARUM 'GREEN MOUNTAIN' GREEN MOUNTAIN SUGAR MAPLE	2-1/2"-3"	B&B	
T-3	18	LIQUIDAMBAR STRACIPLUA SWEETGUM	2-1/2"-3"	B&B	
T-4	9	PLATANUS X ACERIFOLIA 'BLOODGOOD' LONDON PLANE TREE	2-1/2"-3"	B&B	
T-5	10	QUERCUS PALUSTRIS PIN OAK	2-1/2"-3"	B&B	
T-6	2	ZELKOVA SERRATA VILLAGE GREEN VILLAGE GREEN ZELKOVA	2-1/2"-3"	B&B	
Flowering Trees					
KEY	QUANTITY	BOTANICAL NAME/ COMMON NAME	SIZE	ROOT	REMARKS
F-1	5	MALUS 'AMERICAN BEAUTY' AMERICAN BEAUTY CRABAPPLE	2"-2-1/2"	B&B	
F-2	3	MALUS PURPUREA ELEYI ELEYI CRABAPPLE	2"-2-1/2"	B&B	
F-3	9	MALUS HOPA HOPA RED FLOWERING CRABAPPLE	2"-2-1/2"	B&B	
F-4	6	PRUNUS YEDOENSIS YOSHINO CHERRY	2"-2-1/2"	B&B	
F-5	5	PRUNUS SERRULATA KWANZAN KWANZAN CHERRY	2"-2-1/2"	B&B	HEAVY
F-6	5	PYRUS CALLERYANA BRADFORD BRADFORD PEAR	2"-2-1/2"	B&B	

NOTE: REFER TO PLANS F-99-163 FOR
SEDIMENT CONTROL, UTILITIES, ROAD
CONSTRUCTION, STORMWATER MANAGEMENT
AND GRADING DUGS.

Note: No street tree shall be planted closer than 6 feet to back of
curb. All trees shall be installed after installation of BG&E
and C&P lines whenever possible. No street trees will be
planted within 5 feet of any utility structure.

APPROVED: HOWARD COUNTY DEPT. OF PUBLIC WORKS
DATE: 7/25/90
CHIEF, BUREAU OF ENGINEERING
DATE: 7/15/90
CHIEF, BUREAU OF HIGHWAYS

APPROVED: HOWARD COUNTY DEPT. OF PLANNING & ZONING
DATE: 7/25/90
CHIEF, DIV. OF COMMUNITY PLANNING AND LAND DEVELOPMENT

NOTE: THESE SHEETS (1 THROUGH 9) ARE INTENDED
ONLY FOR THE INSTALLATION OF
LANDSCAPING AS SHOWN.

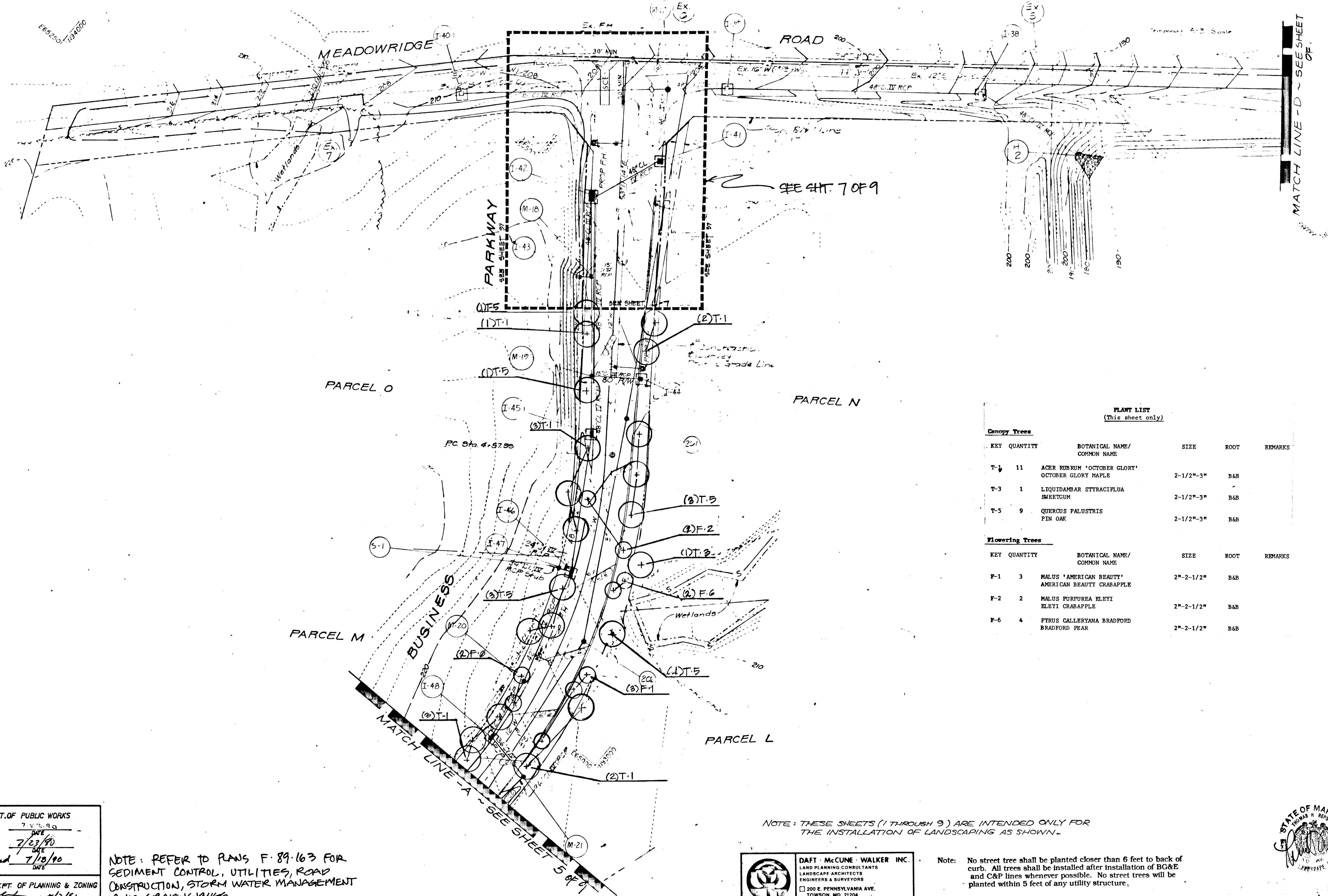
DAFT - McCUNE - WALKER INC.
LAND PLANNING CONSULTANTS
LANDSCAPE ARCHITECTS
ENGINEERS & SURVEYORS
200 E. PENNSYLVANIA AVE.
TOWSON, MD. 21204
TELEPHONE: (301) 296-3333

OWNER/DEVELOPER
MEADOWRIDGE INDUSTRIAL PARTNERSHIP
10005 OLD COLUMBIA ROAD
COLUMBIA, MARYLAND 21046
PH. (301) 381-4444

No.	REVISION	DATE	BY

ENGINEERS • ARCHITECTS • PLANNERS • SCIENTISTS • SURVEYORS • PHOTOGRAMMETRISTS
GREENHORNE & O'MARA, INC.
113 WEST ROAD, SUITE 208, BALTIMORE, MARYLAND 21204
(301) 296-4100
ANNAPOLIS, MD • ATLANTA, GA • AURORA, CO • CULPEPER, VA • DULUTH, GA • EXPORT, PA • FAIRFAX, VA • GREENBELT, MD
LEESBURG, VA • MANASSAS, VA • ORLANDO, FL • RALEIGH, NC • ROCKVILLE, MD • TAMPA, FL • WEST PALM BEACH, FL

BUSINESS PARKWAY STREET TREES
MEADOWRIDGE BUSINESS PARK
LIBER 1419, FOLIO 500 TAX MAPS 37 & 43, P. 177, 178, 362, P. 70 375
WASHINGTON MANOR PARK LOTS 6-13, 24-28, 35-39, 42, 45, 46, 49
ZONE: M-1
1st. ELECTION DISTRICT
ZONING MAPS 37-43
HOWARD CO., MARYLAND
Sht. 5 of 9



MATCH LINE - D ~ SEE SHEET OF

PLANT LIST
(This sheet only)

Canopy Trees					
KEY	QUANTITY	BOTANICAL NAME/ COMMON NAME	SIZE	ROOT	REMARKS
T-1	11	ACER RUBRUM 'OCTOBER GLORY' OCTOBER GLORY MAPLE	2-1/2"-3"	B&B	
T-3	1	LIQUIDAMBAR STYRACIFLUA SWEETGUM	2-1/2"-3"	B&B	
T-5	9	QUERCUS PALUSTRIS PIN OAK	2-1/2"-3"	B&B	
Flowering Trees					
KEY	QUANTITY	BOTANICAL NAME/ COMMON NAME	SIZE	ROOT	REMARKS
F-1	3	MALUS 'AMERICAN BEAUTY' AMERICAN BEAUTY CRABAPPLE	2"-2-1/2"	B&B	
F-2	2	MALUS PURPUREA ELEYI ELEYI CRABAPPLE	2"-2-1/2"	B&B	
F-6	4	PYRUS CALLERYANA BRADFORD BRADFORD PEAR	2"-2-1/2"	B&B	

NOTE: THESE SHEETS (1 THROUGH 9) ARE INTENDED ONLY FOR THE INSTALLATION OF LANDSCAPING AS SHOWN.

Note: No street tree shall be planted closer than 6 feet to back of curb. All trees shall be installed after installation of BG&E and C&P lines whenever possible. No street trees will be planted within 5 feet of any utility structure.

APPROVED HOWARD COUNTY DEPT. OF PUBLIC WORKS
 CHIEF, BUREAU OF ENGINEERING
 DATE 7/23/90
 APPROVED HOWARD COUNTY DEPT. OF PLANNING & ZONING
 CHIEF, DIV. OF COMMUNITY PLANNING AND LAND DEVELOPMENT
 DATE 7/18/90

NOTE: REFER TO PLANS F-89-163 FOR SEDIMENT CONTROL, UTILITIES, ROAD CONSTRUCTION, STORM WATER MANAGEMENT AND GRADING PLANS.

DAFT · McCUNE · WALKER · INC.
 LAND PLANNING CONSULTANTS
 LANDSCAPE ARCHITECTS
 ENGINEERS & SURVEYORS
 200 E. PENNSYLVANIA AVE.
 TOWSON, MD 21204
 TELEPHONE: (301) 296-3333



OWNER/DEVELOPER
 MEADOWRIDGE INDUSTRIAL PARTNERSHIP
 10005 OLD COLUMBIA ROAD
 COLUMBIA, MARYLAND 21046
 PH. (301) 381-4444

No.	REVISION	DATE	BY
1	REVISED P.L.W.	6-24-90	MAW

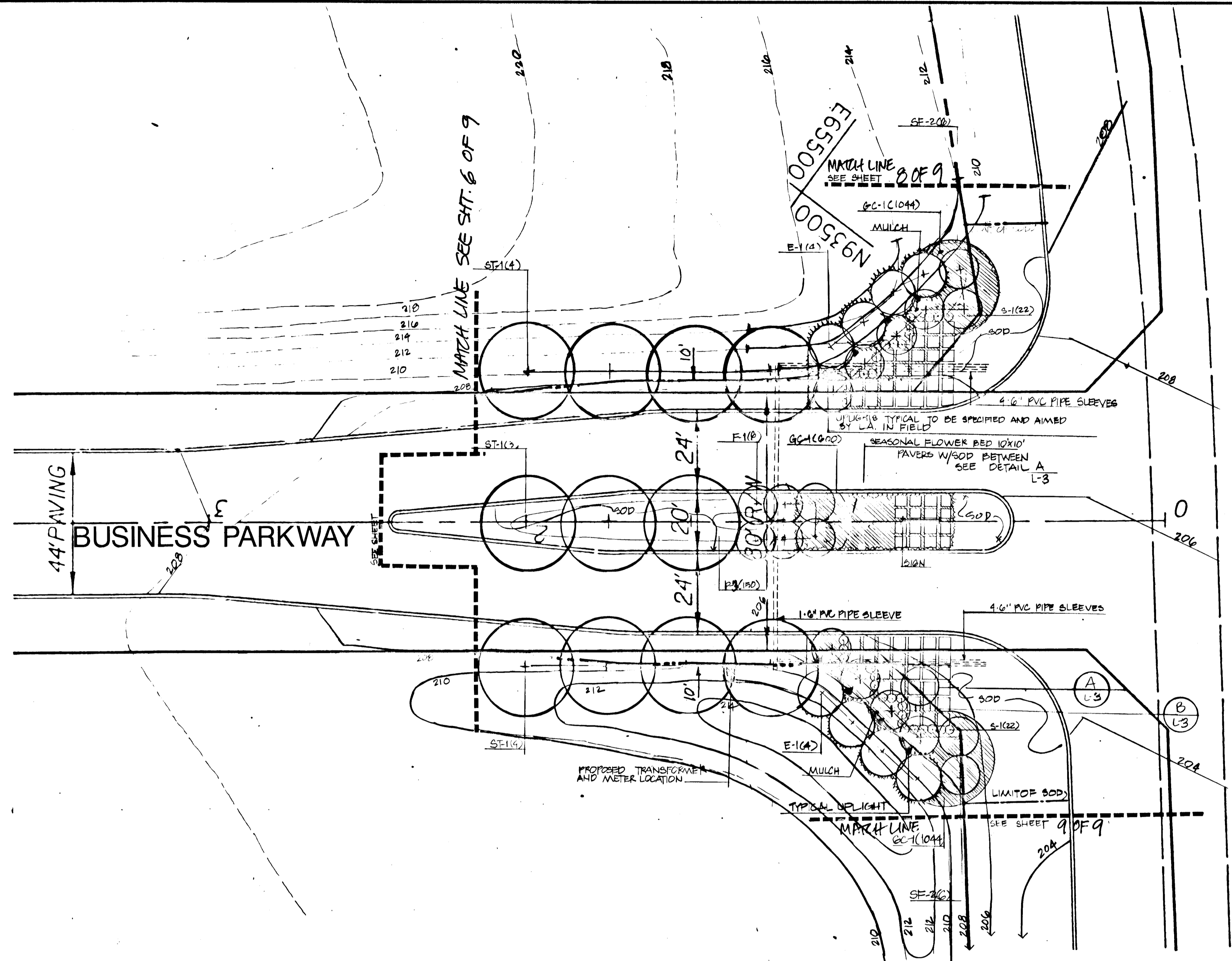


ENGINEERS • ARCHITECTS • PLANNERS • SCIENTISTS • SURVEYORS • PHOTOGRAMMETRISTS
GREENHORNE & O'MARA, INC.
 113 WEST ROAD, SUITE 208, BALTIMORE, MARYLAND 21204
 (301) 296-4100
 ANNAPOLIS MD • ATLANTA GA • AURORA CO • CULPEPER VA • DUBLIN GA • EXPORT PA • FAIRFAX VA • GREENBELT MD
 LEESBURG VA • MANASSAS VA • ORLANDO FL • RALEIGH NC • ROCKVILLE MD • TAMPA FL • WEST PALM BEACH FL

BUSINESS PARKWAY STREET TREES
MEADOWRIDGE BUSINESS PARK
 LIBER 1419, FOLIO 500 TAX MAPS 37 & 43, P. 177, 178, 362, P/O 375
 WASHINGTON MANOR PARK LOTS 6-13, 24-28, 35-39, 42, 45, 46, 49
 ZONE: M-1
 1ST. ELECTION DISTRICT
 ZONING MAPS 37-43
 HOWARD CO., MARYLAND
\$ht. 6 of 9

PLANT LIST
(This sheet only)

Specimen Trees					
KEY	QUANTITY	BOTANICAL NAME/ COMMON NAME	SIZE	ROOT	REMARKS
ST-1	11	LIQUIDMARB STRACIFLUA SWEETGUM	4-1/2"-5"	B&B	
SF-1	4	MALUS AMERICAN BEAUTY AMERICAN BEAUTY CRABAPPLE	4"-4-1/2"	B&B	
SF-2	12	MALUS PURPUREA ELEYI ELEYI CRABAPPLE	4"-4-1/2"	B&B	
Evergreen Trees					
KEY	QUANTITY	BOTANICAL NAME/ COMMON NAME	SIZE	ROOT	REMARKS
E-1	8	PINUS STROBUS EASTERN WHITE PINE	10'-12'	B&B	
Shrubs					
KEY	QUANTITY	BOTANICAL NAME/ COMMON NAME	SIZE	ROOT	REMARKS
S-1	44	TAXUS BACCATA REPANDENS SPREADING YEW	2-1/2'-3'	B&B	HEAVY 3' O.C.
Ground Cover					
KEY	QUANTITY	BOTANICAL NAME/ COMMON NAME	SIZE	ROOT	REMARKS
GC-1	2,888	EUONYMUS FORTUNEI COLORATUS PURPLE LEAF WINTER CREEPER	9"-12"	1-1/2" POTS	12" O.C.
Perennials					
KEY	QUANTITY	BOTANICAL NAME/ COMMON NAME	SIZE	ROOT	REMARKS
P-3	100	CROCUS VERNUS GIANT PURPLE GIANT PURPLE CROCUS		BULBS	HAND BROADCASTED UNDER SOD
Seasonal Flower Bed					
KEY	QUANTITY	BOTANICAL NAME/ COMMON NAME	SIZE	ROOT	REMARKS
FALL	120	YELLOW MUMS	8" POTS	12" O.C.	
SPRING	46	KING ALFRED TULIPS	BULBS	6" O.C.	
SUMMER	150	GERANIUMS	6" POTS	12" O.C.	
Sod					
	377	S.Y. of sod (see specifications)			



Plan
Scale: 1"=20'

APPROVED: HOWARD COUNTY DEPT. OF PUBLIC WORKS
 CHIEF, BUREAU OF ENGINEERING
 DATE: 7/23/90
 CHIEF, LAND DEVELOPMENT DIVISION
 DATE: 7/13/90
 CHIEF, BUREAU OF HIGHWAYS

APPROVED: HOWARD COUNTY DEPT. OF PLANNING & ZONING
 CHIEF, DIV. OF COMMUNITY PLANNING AND LAND DEVELOPMENT
 DATE: 8/5/90

NOTE: REFER TO PLANS F-89-163 FOR SEDIMENT CONTROL, UTILITIES, ROAD CONSTRUCTION, STORM WATER MANAGEMENT AND GRADING PLANS.

NOTE: THESE SHEETS (1 THROUGH 9) ARE INTENDED ONLY FOR THE INSTALLATION OF LANDSCAPING AS SHOWN.

DAFT - McCUNE - WALKER INC.
 LAND PLANNING CONSULTANTS
 LANDSCAPE ARCHITECTS
 ENGINEERS & SURVEYORS
 200 E. PENNSYLVANIA AVE.
 TOWSON, MD. 21204
 TEL: (301) 296-3333

Note: No street tree shall be planted closer than 6 feet to back of curb. All trees shall be installed after installation of BG&E and C&P lines whenever possible. No street trees will be planted within 5 feet of any utility structure.



1479

OWNER/DEVELOPER
 MEADOWRIDGE INDUSTRIAL PARTNERSHIP
 10005 OLD COLUMBIA ROAD
 COLUMBIA, MARYLAND 21046
 PH. (301) 381-4444

No.	REVISION	DATE	BY
1	REV. R.O.W.	2/26/90	NAW

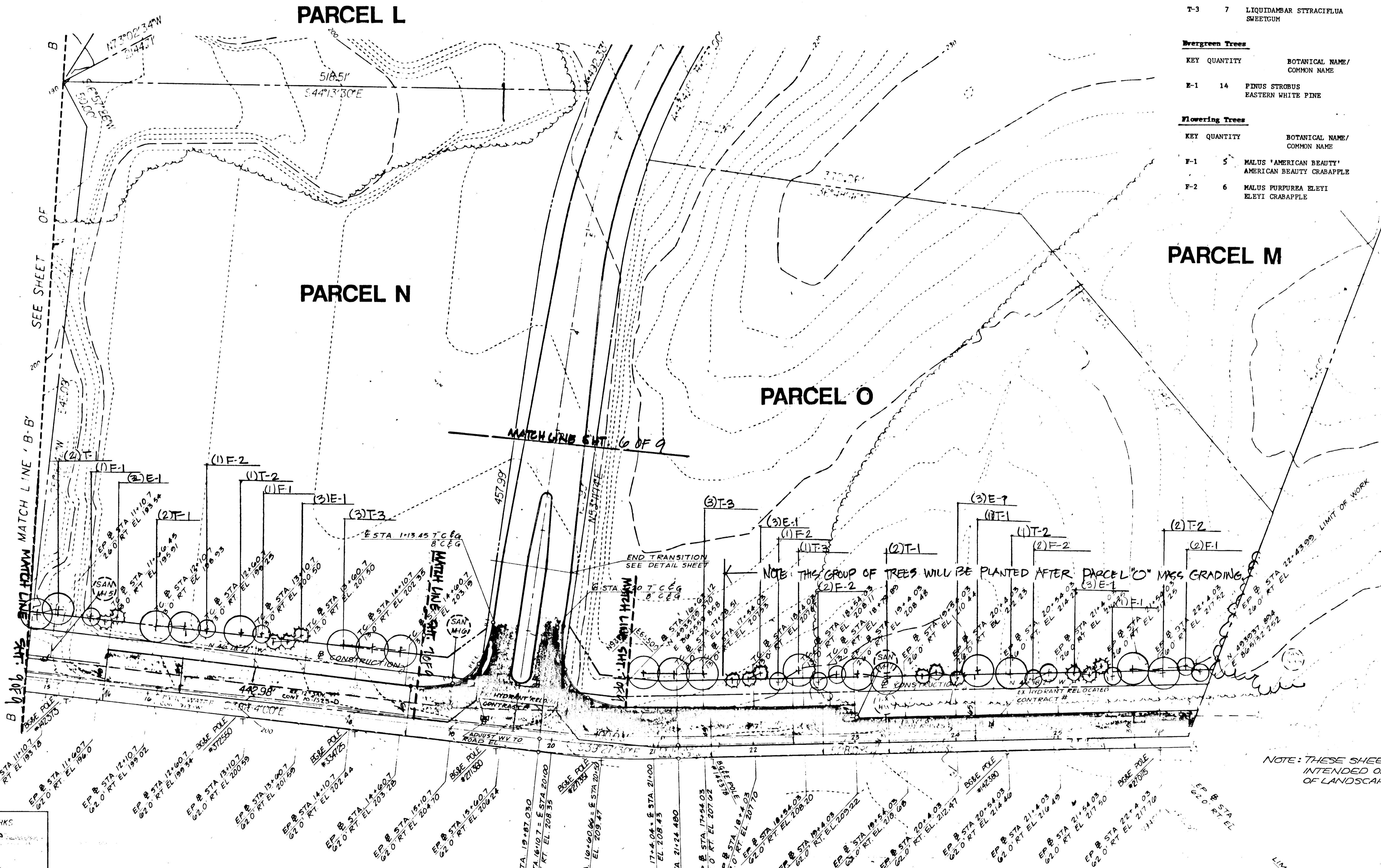


ENGINEERS • ARCHITECTS • PLANNERS • SCIENTISTS • SURVEYORS • PHOTOGRAMMETRISTS
GREENHORNE & O'MARA, INC.
 113 WEST ROAD, SUITE 208, BALTIMORE, MARYLAND 21204
 (301) 296-4100
 ANNAPOLIS, MD • ATLANTA, GA • AURORA, CO • CUIPEPER, VA • DULUTH, GA • EXPORT, PA • FAIRFAX, VA • GREENBELT, MD
 LEESBURG, VA • MANASSAS, VA • ORLANDO, FL • RALEIGH, NC • ROCKVILLE, MD • TAMPA, FL • WEST PALM BEACH, FL

MEADOWRIDGE ROAD ENTRANCE
MEADOWRIDGE BUSINESS PARK
 LIBER 1419, FOLIO 500 TAX MAPS 37 & 43, P. 177, 178, 362, P/O 375
 WASHINGTON MANOR PARR LOTS 6-13, 24-28, 35-39, 42, 45, 46, 49
 ZONE: M-1
 1st. ELECTION DISTRICT
 ZONING MAPS 37-43
 HOWARD CO., MARYLAND

PLANT LIST
(This sheet only)

Canopy Trees					
KEY	QUANTITY	BOTANICAL NAME/ COMMON NAME	SIZE	ROOT	REMARKS
T-1	7	ACER RUBRUM 'OCTOBER GLORY' OCTOBER GLORY MAPLE	2-1/2"-3"	B&B	
T-2	4	ACER SACCHARUM 'GREEN MOUNTAIN' GREEN MOUNTAIN SUGAR MAPLE	2-1/2"-3"	B&B	
T-3	7	LIQUIDAMBAR STRACIPLUA SWEETGUM	2-1/2"-3"	B&B	
Evergreen Trees					
KEY	QUANTITY	BOTANICAL NAME/ COMMON NAME	SIZE	ROOT	REMARKS
E-1	14	PINUS STROBUS EASTERN WHITE PINE	10'-12'	B&B	
Flowering Trees					
KEY	QUANTITY	BOTANICAL NAME/ COMMON NAME	SIZE	ROOT	REMARKS
F-1	5	MALUS 'AMERICAN BEAUTY' AMERICAN BEAUTY CRABAPPLE	2"-2-1/2"	B&B	
F-2	6	MALUS PURPUREA ELEYI ELEYI CRABAPPLE	2"-2-1/2"	B&B	



Robert B. Mamon 2-27-89
ROBERT H. WARMON, P.E. *1053

APPROVED: HOWARD COUNTY DEPT. OF PUBLIC WORKS
DATE 7/23/90
DATE 7/13/90

APPROVED: HOWARD COUNTY DEPT. OF PLANNING & ZONING
DATE 7/13/90

NOTE: REFER TO PLANS F-89-163 FOR SEDIMENT CONTROL, UTILITIES, ROAD CONSTRUCTION, STORM WATER MANAGEMENT AND GRADING PLANS.

DAFT McCUNE WALKER INC.
LAND PLANNING CONSULTANTS
LANDSCAPE ARCHITECTS
ENGINEERS & SURVEYORS
200 E. PENNSYLVANIA AVE.
TOWSON, MD. 21204
TELEPHONE: (301) 296-3333

Note: No street tree shall be planted closer than 6 feet to back of curb. All trees shall be installed after installation of BG&E and C&P lines whenever possible. No street trees will be planted within 5 feet of any utility structure.



OWNER/DEVELOPER
MEADOWRIDGE INDUSTRIAL PARTNERSHIP
10005 OLD COLUMBIA ROAD
COLUMBIA, MARYLAND 21046
PH. (301) 381-4444

No	REVISION	DATE	BY



GREENHORNE & O'MARA, INC.
113 WEST ROAD, SUITE 208, BALTIMORE, MARYLAND 21204
(301) 296-4100
ANNAPOLIS, MD-ATLANTA, GA-AURORA, CO-BALTIMORE, MD-CULPEPER, VA-DULUTH, GA-EXPORT, PA-FAIRFAX, VA
GREENBELT, MD-LEESBURG, VA-MANASSAS, VA-ORLANDO, FL-RALEIGH, NC-TAMPA, FL-WEST PALM BEACH, FL

MEADOWRIDGE ROAD STREET TREES
MEADOWRIDGE BUSINESS PARK
LIBER 1419, FOLIO 500 TAX MAPS 37 & 43, P. 177, 178, 362, P/O 375
WASHINGTON MANOR PARK LOTS 6-13, 24-28, 35-39, 42, 45, 46, 49
ZONE: M-1
1st. ELECTION DISTRICT

ZONING MAPS 37-43
HOWARD CO., MARYLAND

Sht. 8 of 9

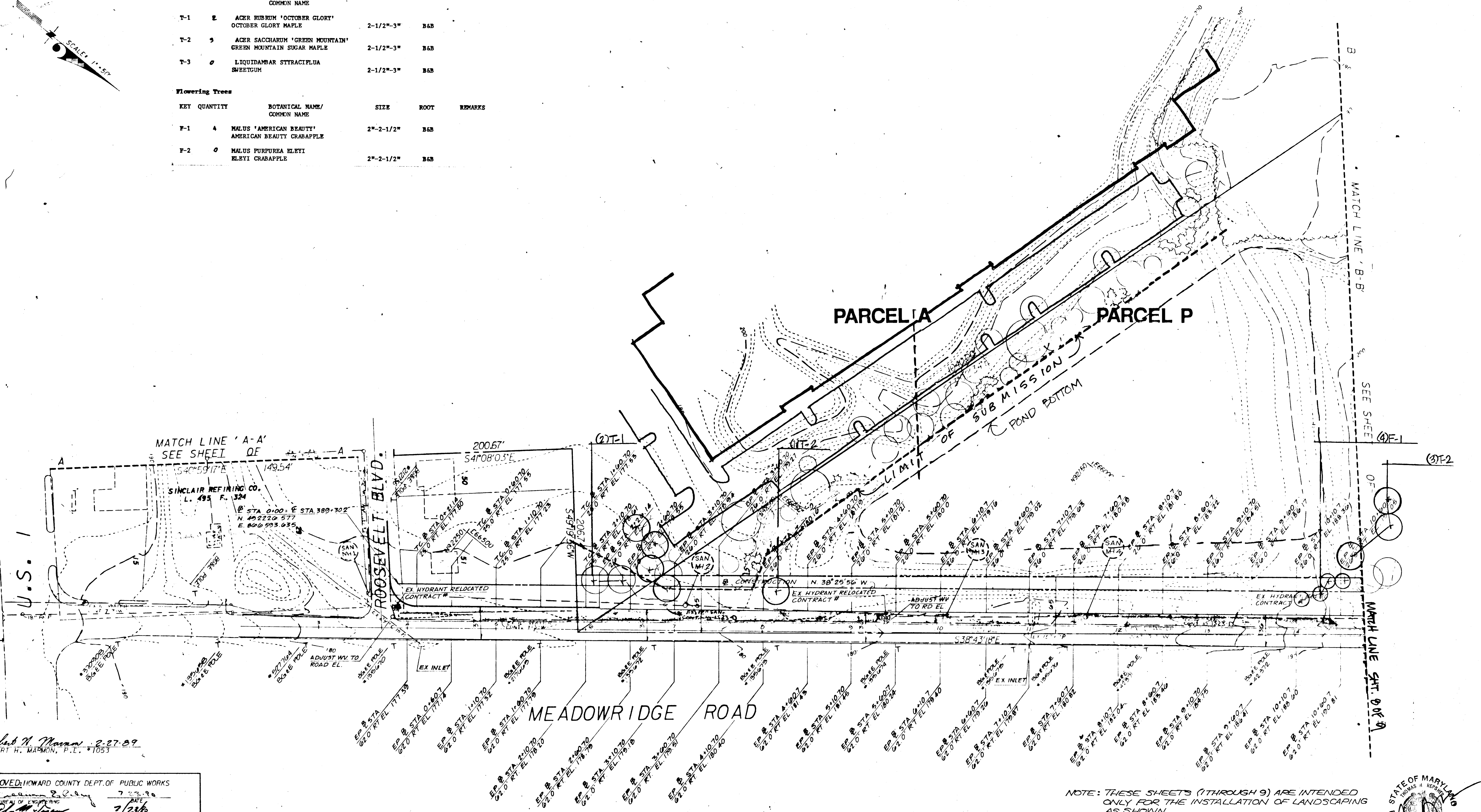
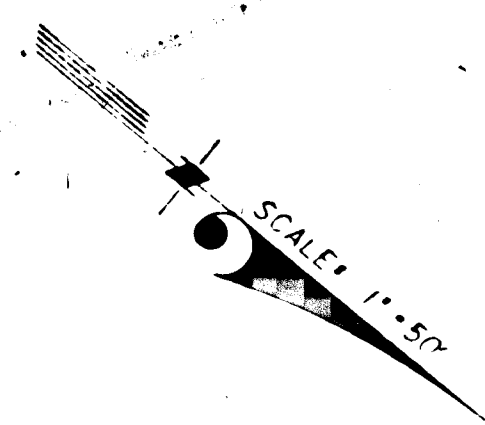
PLANT LIST
(This sheet only)

Canopy Trees

KEY	QUANTITY	BOTANICAL NAME/ COMMON NAME	SIZE	ROOT	REMARKS
T-1	2	ACER RUBRUM 'OCTOBER GLORY' OCTOBER GLORY MAPLE	2-1/2"-3"	B&B	
T-2	5	ACER SACCHARUM 'GREEN MOUNTAIN' GREEN MOUNTAIN SUGAR MAPLE	2-1/2"-3"	B&B	
T-3	0	LIQUIDAMBAR STRYACIFLUA SWEETGUM	2-1/2"-3"	B&B	

Flowering Trees

KEY	QUANTITY	BOTANICAL NAME/ COMMON NAME	SIZE	ROOT	REMARKS
F-1	4	MALUS 'AMERICAN BEAUTY' AMERICAN BEAUTY CRABAPPLE	2"-2-1/2"	B&B	
F-2	0	MALUS PURPUREA ELEYI ELEYI CRABAPPLE	2"-2-1/2"	B&B	



Robert H. Marmon 2-27-89
 ROBERT H. MARMON, P.E. 1053

APPROVED: HOWARD COUNTY DEPT. OF PUBLIC WORKS
 DATE 7/23/90
 DATE 7/13/90

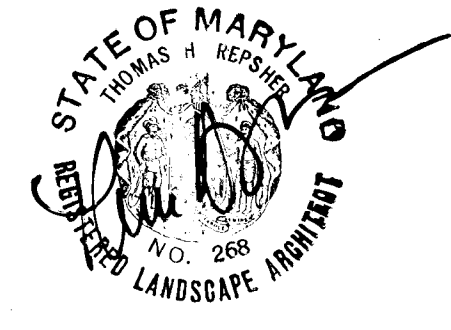
APPROVED: HOWARD COUNTY DEPT. OF PLANNING & ZONING
 DATE 7/13/90

NOTE: REFER TO PLANS F-89-163 FOR
 SEDIMENT CONTROL, UTILITIES, ROAD
 CONSTRUCTION, STORM WATER MANAGEMENT AND GRADING PLANS.

DAFT - McCUNE - WALKER INC.
 LAND PLANNING CONSULTANTS
 LANDSCAPE ARCHITECTS
 ENGINEERS & SURVEYORS
 200 E. PENNSYLVANIA AVE.
 TOWSON, MD. 21284
 TELEPHONE: (301) 296-3333

NOTE: THESE SHEETS (1 THROUGH 9) ARE INTENDED
 ONLY FOR THE INSTALLATION OF LANDSCAPING
 AS SHOWN.

Note: No street tree shall be planted closer than 6 feet to back of
 curb. All trees shall be installed after installation of BG&E
 and C&P lines whenever possible. No street trees will be
 planted within 5 feet of any utility structure.



OWNER/DEVELOPER
 MEADOWRIDGE INDUSTRIAL PARTNERSHIP
 10005 OLD COLUMBIA ROAD
 COLUMBIA, MARYLAND 21046
 PH. (301) 381-4444

No.	REVISION	DATE	BY
	REMOVED PLANTING ALONG MEADOWRIDGE	2-21-90	ASR



GREENHORNE & O'MARA, INC.
 113 WEST ROAD, SUITE 208, BALTIMORE, MARYLAND 21204
 (301) 296-4100
 ANNAPOLIS, MD - ATLANTA, GA - AURORA, CO - BALTIMORE, MD - CULPEPER, VA - DULUTH, GA - EXPORT, PA - FAIRFAX, VA
 GREENBELT, MD - LEESBURG, VA - MANASSAS, VA - ORLANDO, FL - RALEIGH, NC - TAMPA, FL - WEST PALM BEACH, FL

MEADOWRIDGE ROAD STREET TREES
MEADOWRIDGE BUSINESS PARK
 LIBER 1419, FOLIO 500 TAX MAPS 37 & 43, P. 177, 178, 362, P/O 375
 WASHINGTON MANOR PARK LOTS 6-13, 24-28, 35-39, 42, 45, 46, 49
 ZONE: M-1
 1st. ELECTION DISTRICT

ZONING MAPS 37-43
 HOWARD CO., MARYLAND

Sht. 9 of 9

197A