

CURB & GUTTER LEGEND

Std 7" C&G	
Rev 7" C&G	
Std 6" C&G	
Rev 6" C&G	

THE HOWARD RESEARCH AND DEVELOPMENT LAND COMPANY
L 1535 R 103 water and sewer utility com

Note: Street trees along Cedar Lane shown dashed as per F-88-151.

STREET LIGHT LEGEND

175 Watt "Modern" Mercury Vapor Lamp on 14 foot bronze Fiberglass Pole.
250 Watt Mercury Vapor Lamp on 30 foot Bronze Aluminum Pole.

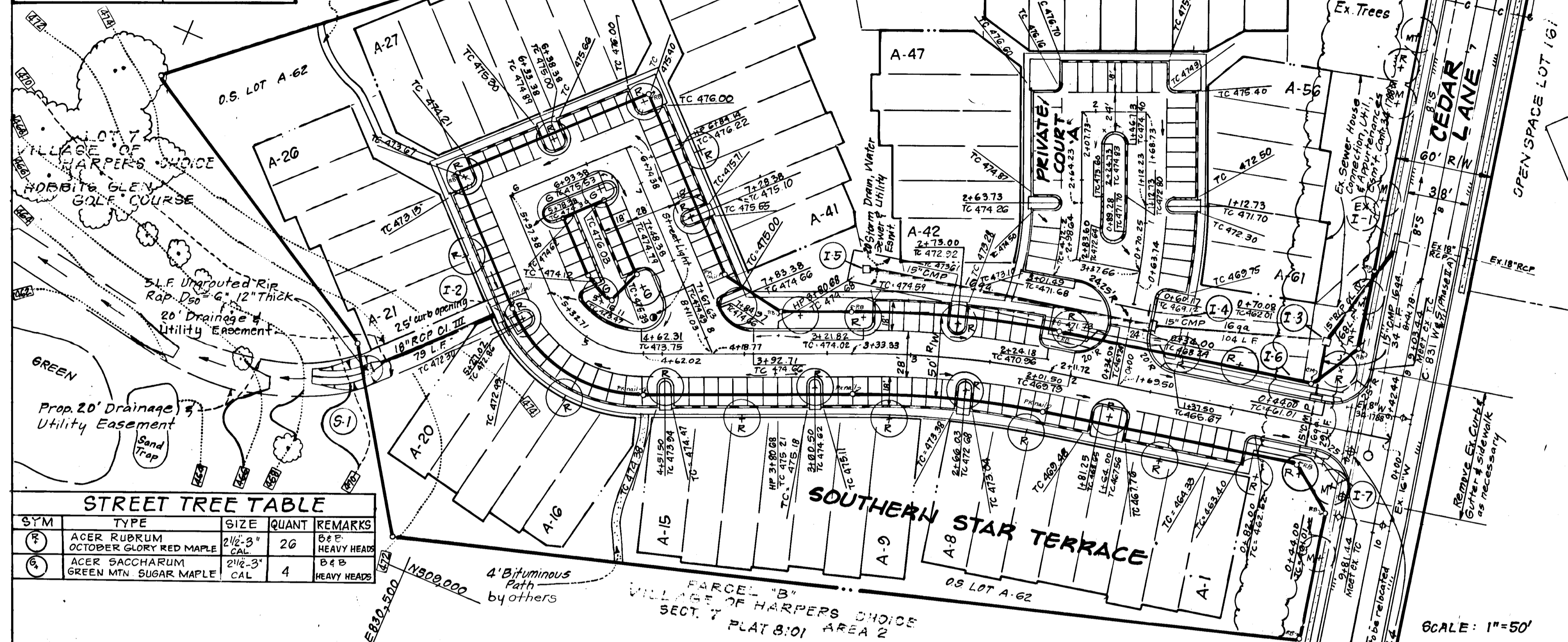
- GENERAL NOTES**
- All storm drain & paving shall be constructed in accordance with the latest edition and specifications of Howard County & MSHA.
 - Types of storm drainage refer to the standard details of Ho. Co. & MSHA.
 - Trench compaction for storm drains within road or street right-of-way limits shall be in accordance with "Ho. Co. Design Manual, Vol. II" Std. G-201.
 - Information concerning underground utilities was obtained from available records, but the Contractor must determine the exact location and elevation of mains by digging test pits, by hand, at all utility crossings, well in advance of construction.
 - All utility companies shall be notified 24 hrs. in advance of construction.
 - All traffic services, parking and signing to be done in accordance with the "Manual of Uniform Traffic Control Devices," 1978 Edition.
 - Sag and Crest Vertical Curves were designed in accordance with "Ho. Co. Design Manual" Vol. III.
 - Provide Conc. sidewalk Ramps Ho. Co. Std. Type A R-401 where shown in plan.
 - Design Speed: See Detail sht. 3 Zoning: New Town.
 - The contractor or developer shall contact the Construction Inspection/Survey Division 24 hrs. in advance of commencement of work Ph. 792-7272.
 - Bench Marks; Ho. Co. Monuments: NBS 2730002 & 2730003. See Vicinity Map.
 - Storm Water Management has been waived per previously approved plans F-88-151.

Approved for HOWARD S.C.D.
Name: *James M. ...*
Signature: *James M. ...*
U.S. Soil Conservation Service
Date: 3/8/89

THIS DEVELOPMENT PLAN IS APPROVED FOR SOIL EROSION AND SEDIMENT CONTROL BY THE HOWARD SOIL CONSERVATION DISTRICT.
Approved: *James M. ...* 3/8/89
Date

DEVELOPER'S/BUILDERS CERTIFICATE
I/We certify that all development and construction will be done according to this plan of development and plan for erosion and sediment control and that all responsible personnel involved in the construction project will have a Certificate of Attendance of a Dept. of Natural Resources Approved Training Program for the Control of Sediment and Erosion before beginning the project. I also authorize periodic on-site inspection by the Howard Soil Conservation District or their authorized agents, as are deemed necessary.
James M. ... 12-16-88
Date

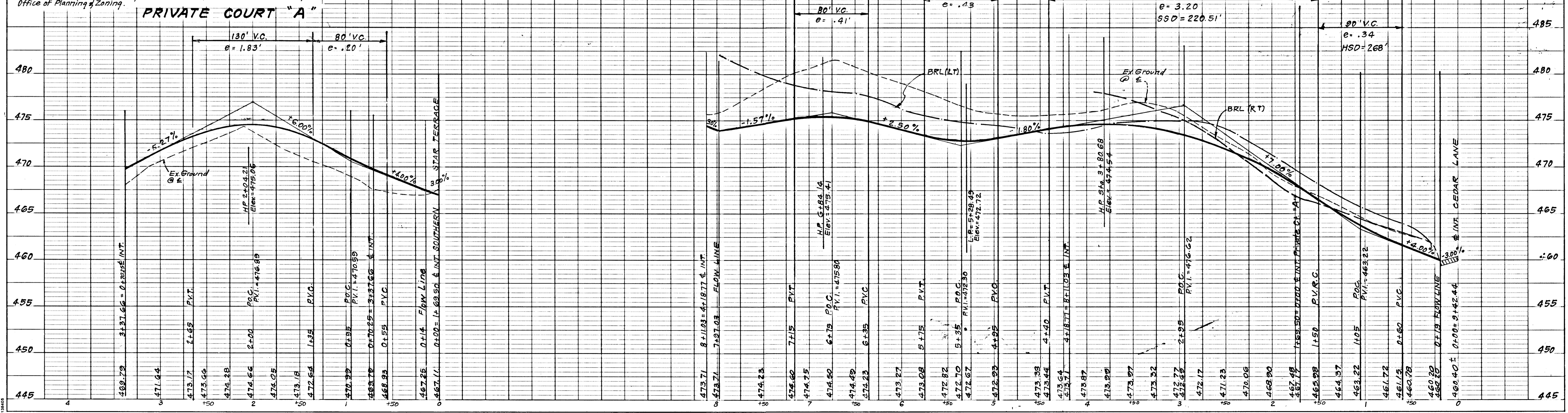
ENGINEER'S CERTIFICATE
I hereby certify that this plan for Erosion and Sediment Control represents a practical and workable plan based on my personal knowledge of the site conditions and that it was prepared in accordance with the requirements of the Howard Soil Conservation District.
James M. ... 12-9-88
Date
8 Nelson Clark



STREET TREE TABLE

SYM	TYPE	SIZE	QUANT	REMARKS
(F)	ACER RUBRUM OCTOBER GLORY RED MAPLE	2 1/2" - 3" DBH	26	B&B HEAVY HEADS
(G)	ACER SACCHARUM GREEN MTN. SUGAR MAPLE	2 1/2" - 3" CAL	4	B&B HEAVY HEADS

- Contractor to verify location of underground utilities prior to digging.
- Location of trees may be adjusted slightly to accommodate field conditions.
- Street Trees: The location, and type of trees shown on these plans are tentative and are used for bond purposes only. The final location and variety of trees may vary to accommodate field conditions and builders landscape program. Bond release is contingent upon Section 16.131 of the Howard County subdivision Regulations, as approved by the Office of Planning & Zoning.



STRUCTURE SCHEDULE

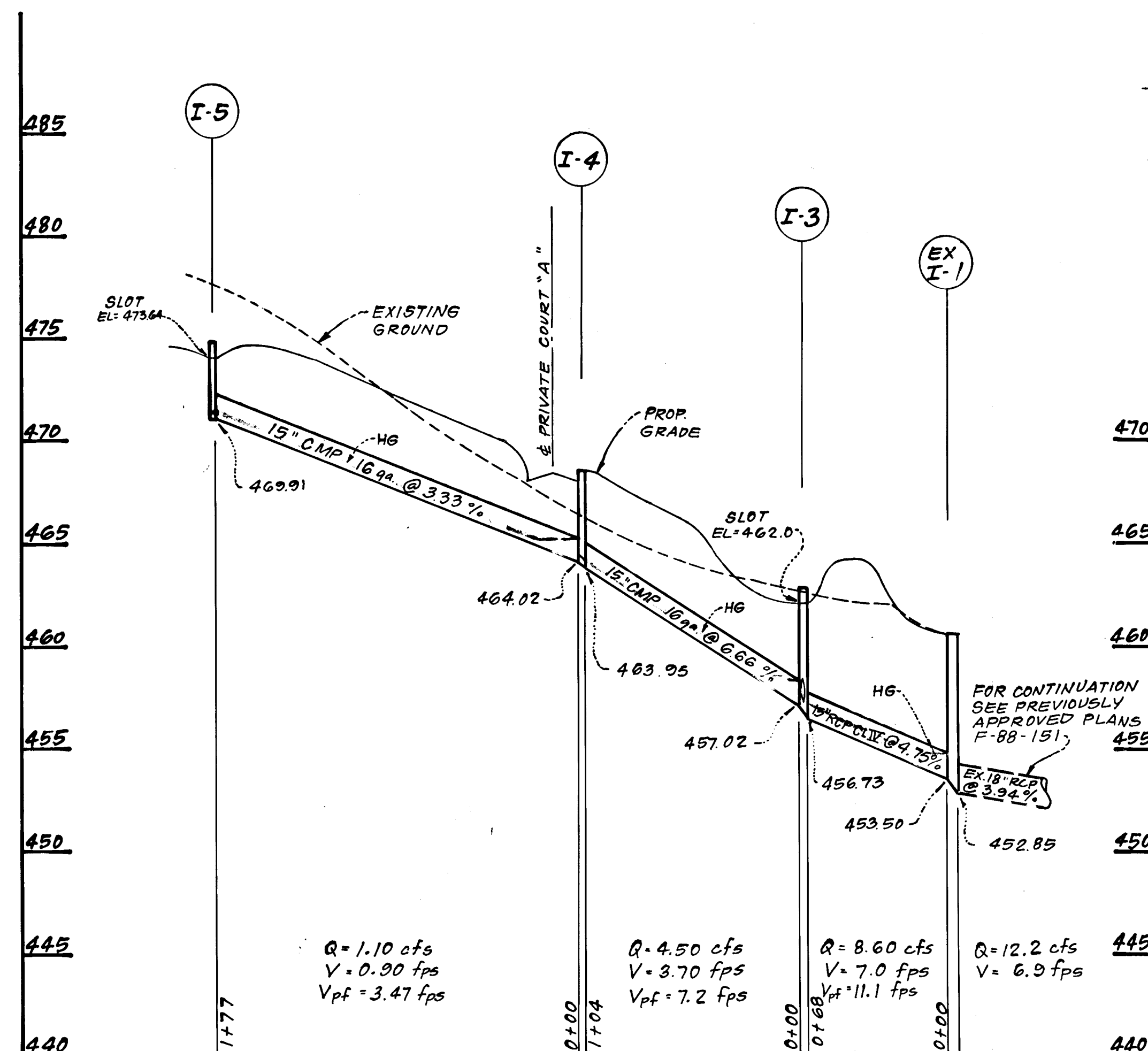
No	TYPE	INV IN	INV OUT	TOP ELEVATION		REMARKS	LOCATION
				UPPER	LOWER		
S-1	Conc End Section	468.55	468.53	-	-	No. Co. 514.90.57 15'-8"	SEE PLAN
I-2	A-10 Inlet	-	469.00	472.30	472.30	" SD402 W2'-6"	SEE PLAN
I-3	D Inlet	457.02	456.73	462.62	462.62	" SD411 2'-6"	SEE PLAN
I-4	A-5 Inlet w/Deflectors	464.02	463.95	468.61	468.36	" SD401 W2'-6"	SEE PLAN
I-5	D Inlet	-	469.91	474.44	474.44	" SD411 2'-6"	SEE PLAN
I-6	A-5 Inlet w/Deflectors	457.91	457.36	461.38	461.14	" SD401 W2'-6"	SEE PLAN
I-7	A-5 Inlet w/Deflectors	-	457.74	461.38	461.14	" SD401 W2'-6"	SEE PLAN

+ All inverts to be fully developed
 Δ See No. Co. 514.4.83 for inlet deflectors
 * slots on all sides

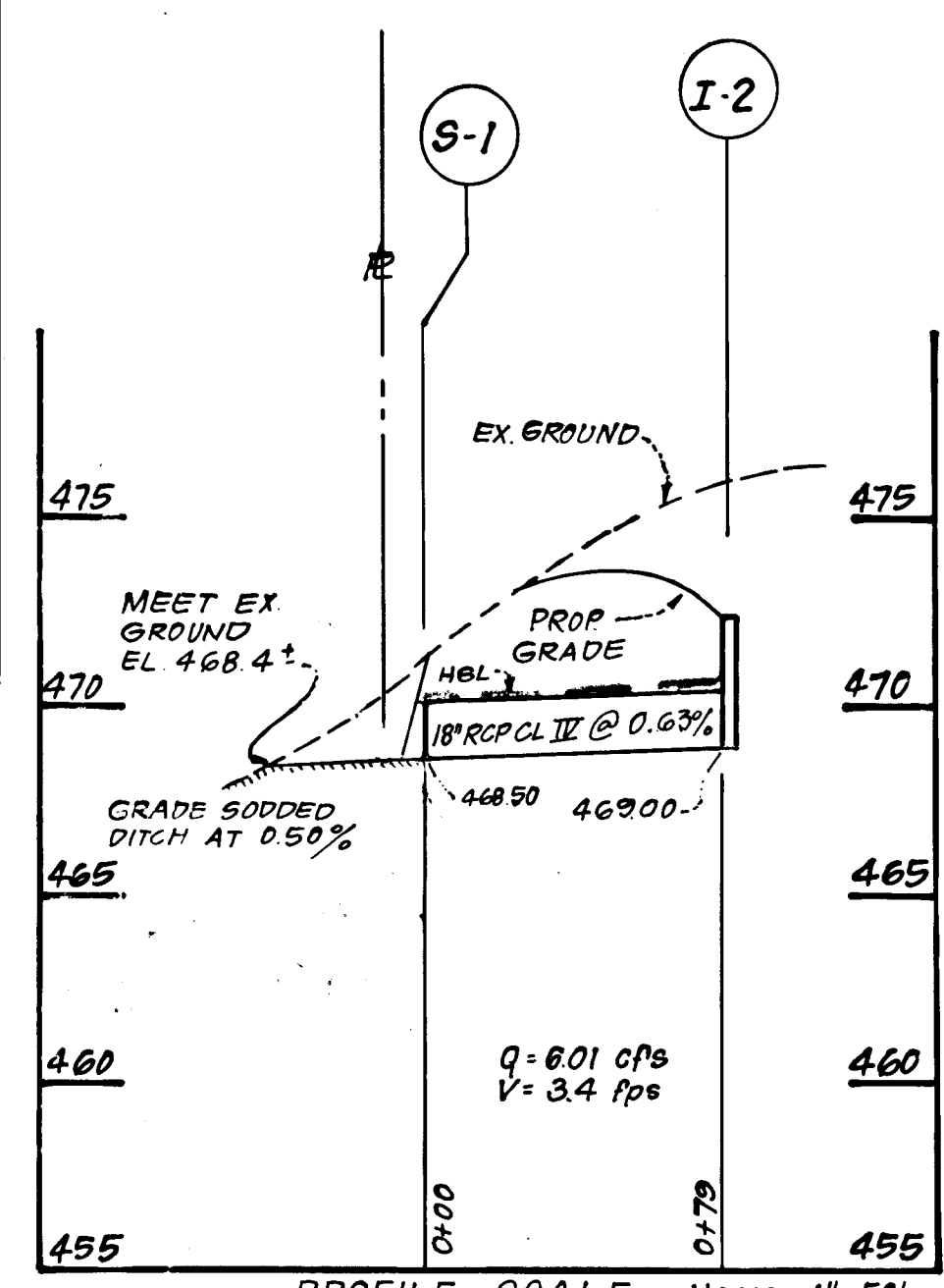
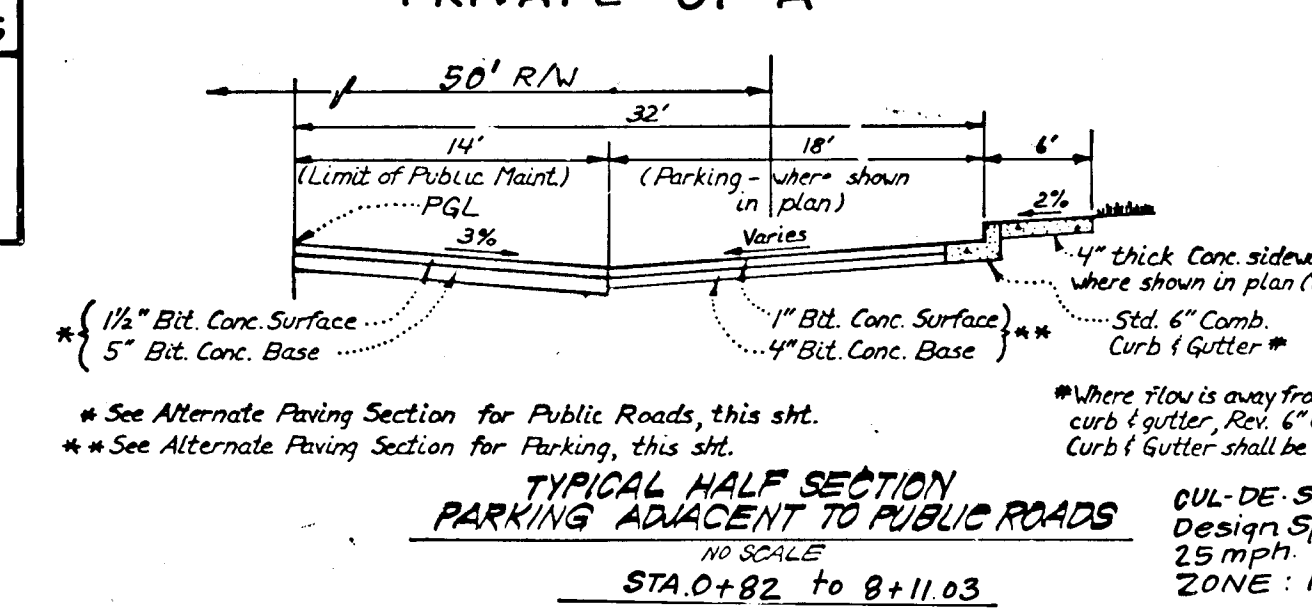
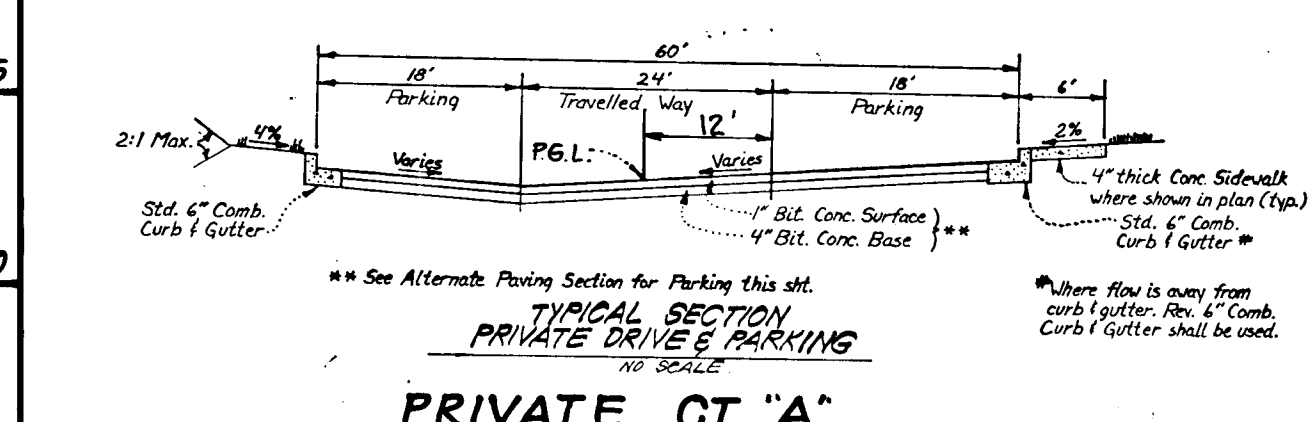
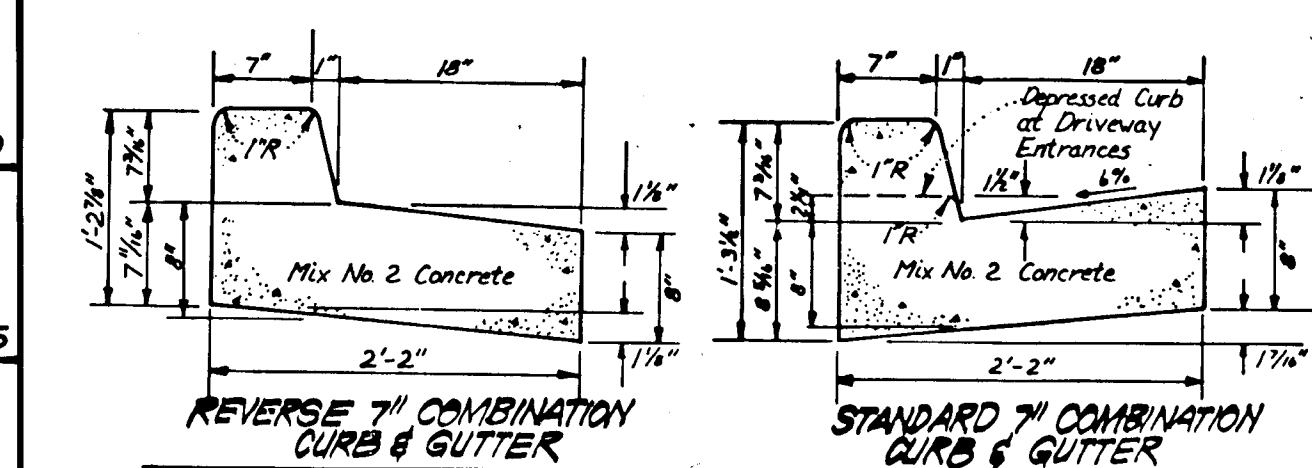
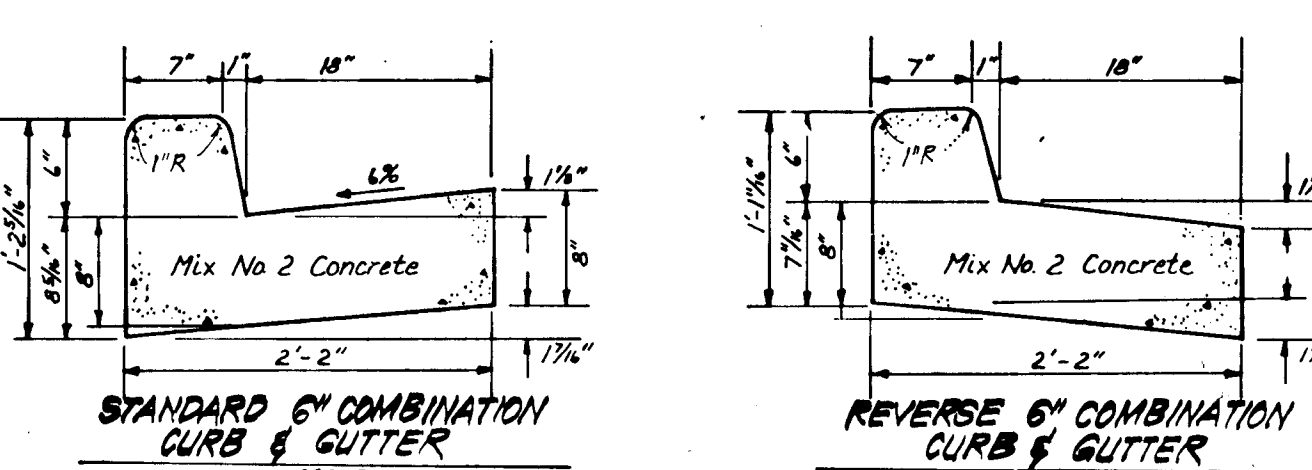
PIPE SCHEDULE

SIZE	TYPE	LENGTH
15"	CMP 164A	344 L.F.
18"	RCP C.I. IV	79 L.F.
15"	RCP C.I. IV	68 L.F.

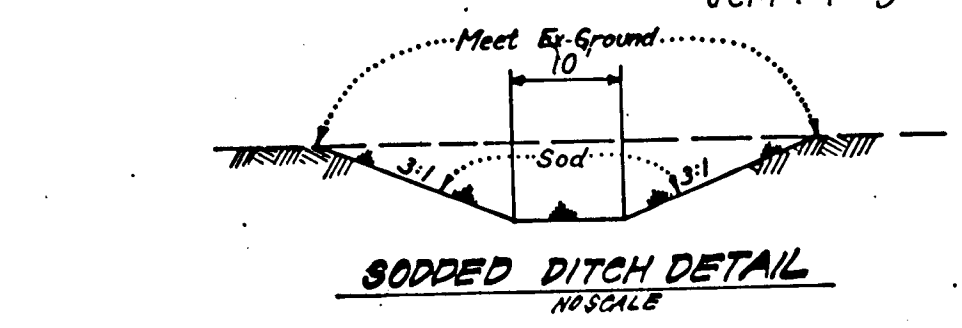
* Use 24" x 1/2" Corrugations



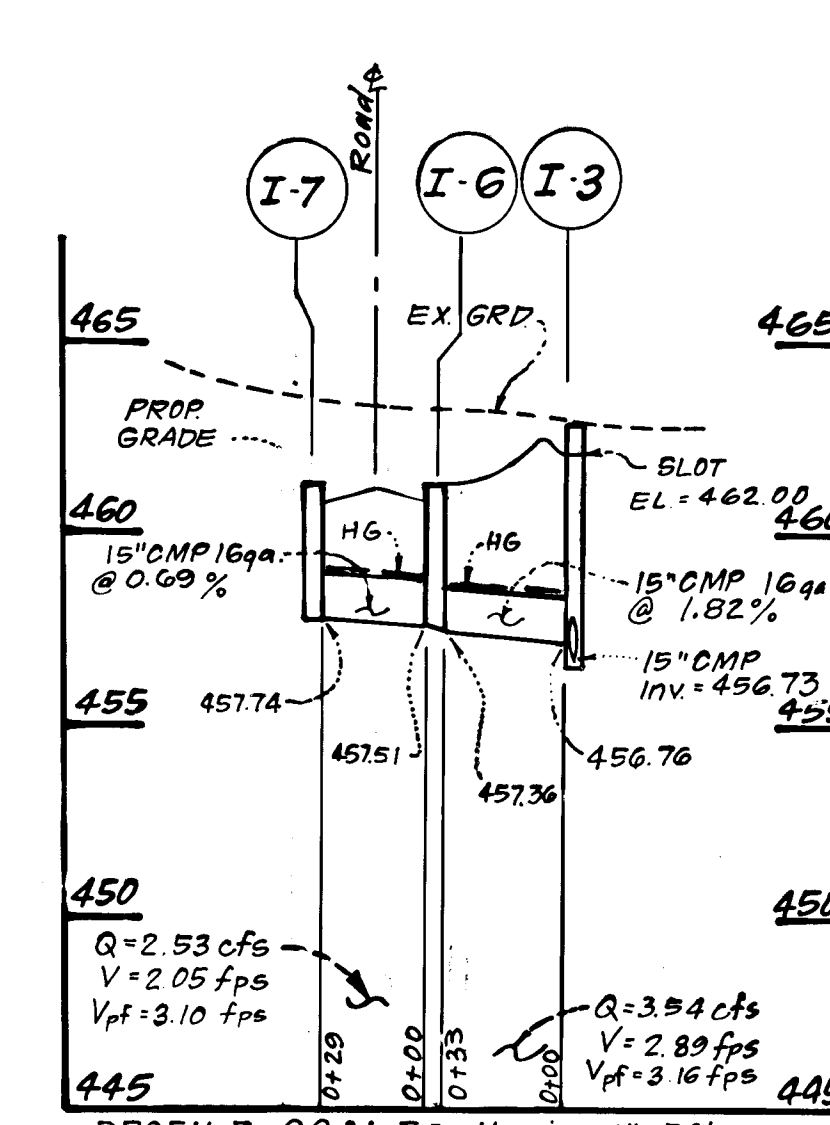
PROFILE SCALE
 Scale: Horiz. 1"=50'
 Vert. 1"=5'



PROFILE SCALE = Horiz. 1"=50'
 Vert. 1"=5'

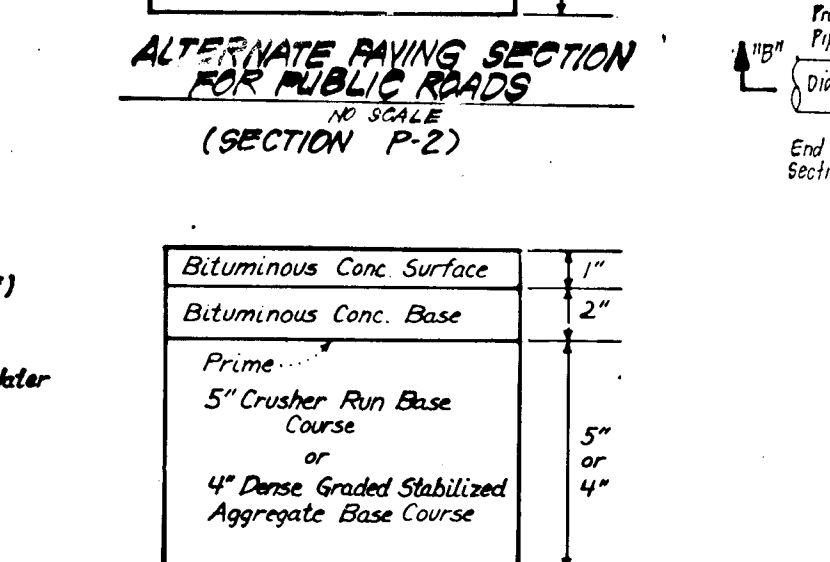


- GENERAL SODDING NOTES:**
- Apply 10-10-10 Fertilizer @ 1000#/acre (25#/1000sf.)
 - Apply Ground Agricultural Limestone @ 2000#/acre (50#/1000sf.)
 - Incorporate both Lime and Fertilizer into soil by discing. Firm up after incorporation.
 - Lay sod to a tight fit. Roll to insure contact with underlying soil. Water as necessary for 2 weeks, in summer, to ensure establishment.
 - All sod to be used must be certified by the state of Maryland.
 - Sod to be pegged and stapled.



PROFILE SCALE = Horiz. 1"=50'
 Vert. 1"=5'

Bituminous Conc. Surface	1/2"
Bituminous Conc. Base	2 1/2"
Prime	1"
5" Crusher Run Base Course	5"
4" Dense Graded Stabilized Aggregate Base Course	4"

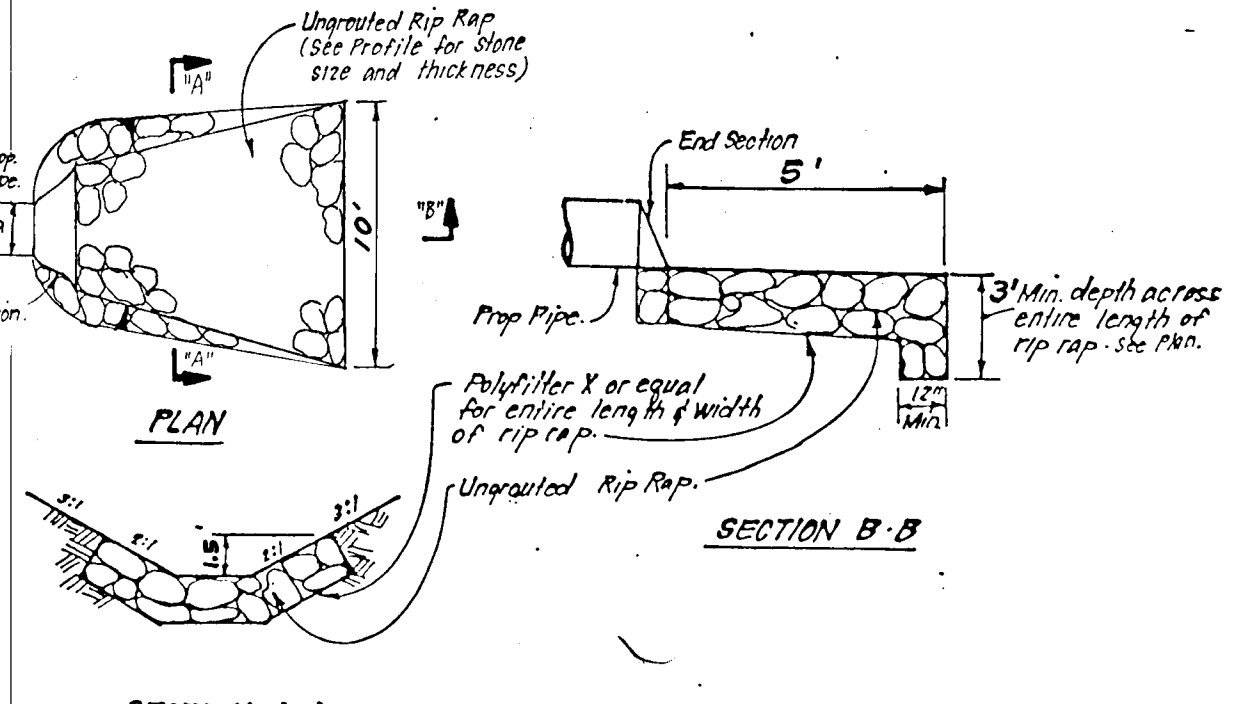


PROFILE SCALE = Horiz. 1"=50'
 Vert. 1"=5'

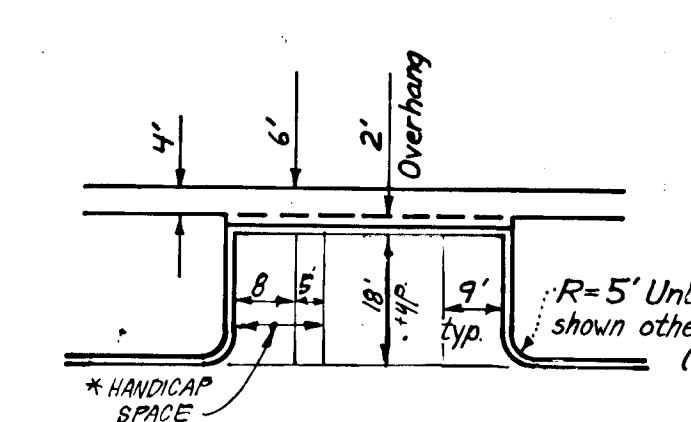
Bituminous Conc. Surface	1"
Bituminous Conc. Base	2"
Prime	1"
5" Crusher Run Base Course	5"
4" Dense Graded Stabilized Aggregate Base Course	4"

Reviewed for: HOWARD S.C.D.
 Name: _____
 and meets Technical Requirements
 Signature: _____ Date: _____
 U.S. Soil Conservation Service

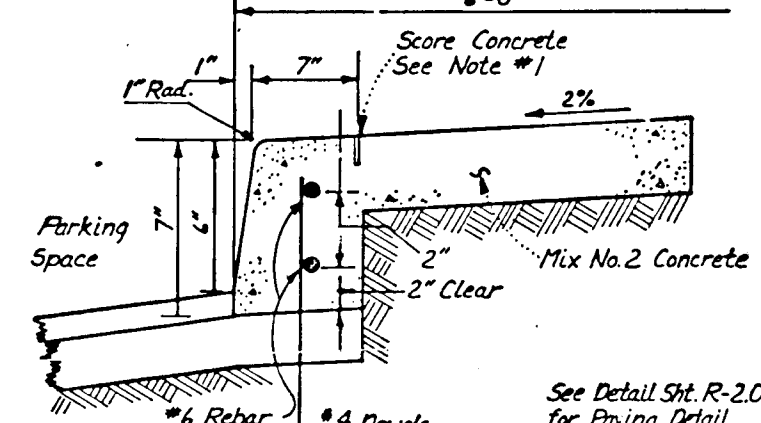
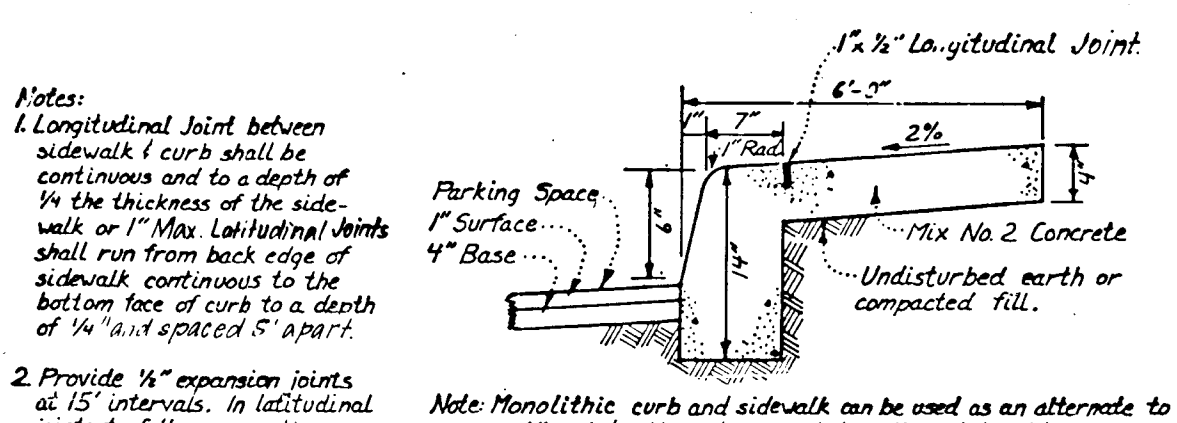
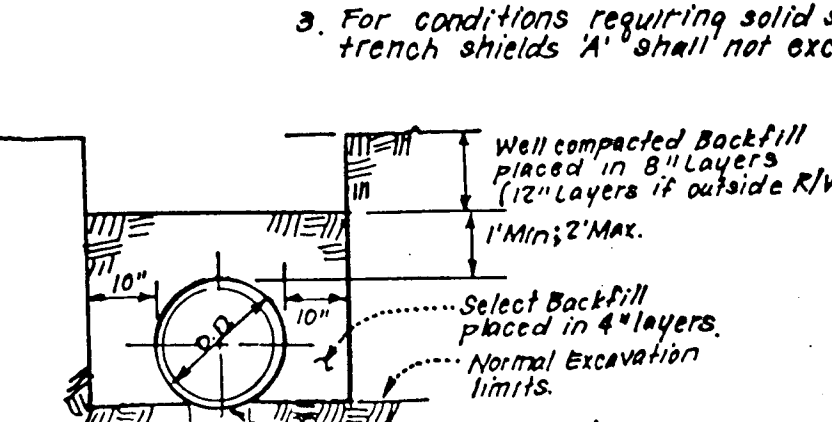
THIS DEVELOPMENT PLAN IS APPROVED FOR SOIL EROSION AND SEDIMENT CONTROL BY THE HOWARD SOIL CONSERVATION DISTRICT.
 Approved: _____ DATE: 3/15/89



SECTION A-A
 SECTION B-B



* Two 8' Handicap Spaces may share One 5' Aisle



APPROVED: FOR PUBLIC WATER AND PUBLIC SEWERAGE SYSTEMS
 HOWARD COUNTY HEALTH DEPARTMENT

COUNTY HEALTH OFFICER: _____ DATE: _____

APPROVED: HOWARD COUNTY OFFICE OF PLANNING & ZONING

CHIEF DIVISION OF COMMUNITY PLANNING AND LAND DEVELOPMENT: _____ DATE: _____

APPROVED: FOR PUBLIC WATER AND PUBLIC SEWERAGE, STORM DRAINAGE SYSTEMS AND PUBLIC ROADS
 HOWARD COUNTY DEPARTMENT OF PUBLIC WORKS

DIRECTOR: _____ DATE: _____

CHIEF BUREAU OF ENGINEERING: _____ DATE: _____

DEVELOPER'S/BUILDERS CERTIFICATE

"I/We certify that all development and construction will be done according to this plan of development and plan for erosion and sediment control and that all responsible personnel involved in the construction project will have a Certificate of Attendance at a Dept. of Natural Resources Approved Training Program for the Control of Sediment and Erosion before beginning the project. I also authorize periodic on-site inspection by the Howard Soil Conservation District or their authorized agents, as are deemed necessary."

Approved: _____ DATE: 12-16-88

STATE OF MARYLAND
 DEPARTMENT OF NATURAL RESOURCES
 SOIL CONSERVATION DISTRICT

ENGINEER'S CERTIFICATE

"I hereby certify that this plan for Erosion and Sediment Control represents a practical and workable plan based on my personal knowledge of the site conditions and that it was prepared in accordance with the requirements of the Howard Soil Conservation District."

Approved: _____ DATE: 12-9-88

8 Nelson Clark

APPROVED: HOWARD COUNTY DEPARTMENT OF PUBLIC WORKS

BY: _____ NO. _____ REVISION: _____ DATE: 3/27/89

W.J. STORM DRAIN EL. & REMOVED RIP RAP 0-26-01

Chief, Land Development Division

Chief, Bureau of Highways

Chief, Bureau of Engineering

APPROVED: HOWARD COUNTY OFFICE OF PLANNING & ZONING

Chief, Division of Community Planning & Land Development

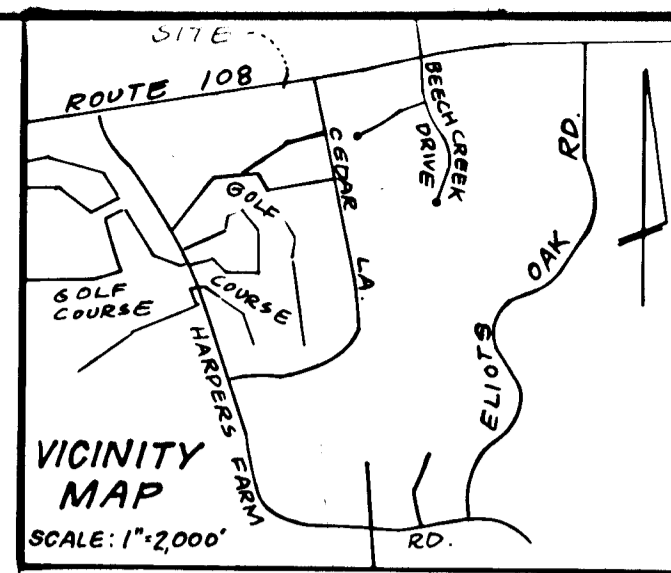
CLARK • FINEROCK & SACKETT, INC.
 ENGINEERS • PLANNERS • SURVEYORS

7135 MINTREL WAY • COLUMBIA, MD 21045 • (301) 381-7200 - BALTO. • (301) 621-8100 - WASH.

DESIGNED: STORM DRAIN PROFILES & PAVING DETAILS
 DRAWN: LOTS A1 thru A-63 PARCEL "A"
 VLM
 CHECKED: _____
 DATE: 12-8-88

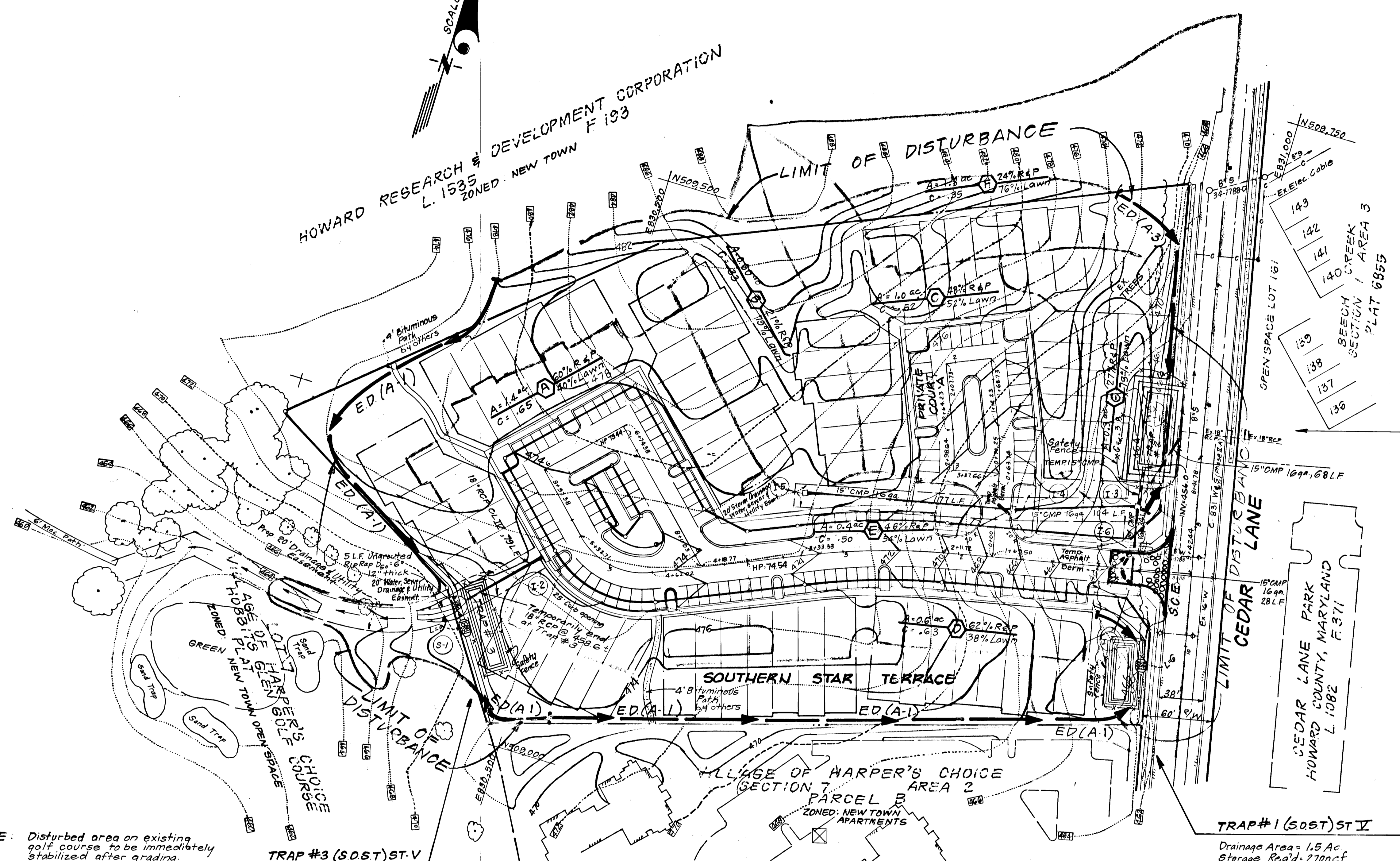
SCALE: As Shown
 DRAWING: 2 of 4
 JOB NO.: 88-114
 FILE NO.: 88-114D

For: Howard Research and Development Land Company
 10275 Little Patuxent PKWY
 Columbia, Maryland 21044



HOWARD RESEARCH & DEVELOPMENT CORPORATION
 L. 1535 ZONED NEW TOWN F 193

SCALE: 1"=50'



TRAP #2 (S.1ST) ST-III
 (F#88-15)
 D.A. = 3.5 Ac.
 Storage Req'd = 6300 cf
 Storage Provided = 7920 cf
 Depth = 4'
 Slot El. = 459.0
 Bottom El. = 455.0
 Cleanout El. = 457.0
 Bottom Dimensions = 8' x 22'
 Side Slope = 2:1

LEGEND:

- Contour Interval 2 Ft.
- Existing Contour 470
- Proposed Contour
- Direction of Drainage
- Stabilized Construction Entrance
- Earth Dike ED (A-1)

NOTE: Disturbed area on existing golf course to be immediately stabilized after grading.

TRAP #3 (S.05T) ST-V
 Drainage Area = 2.2 Ac.
 Storage Req'd = 3960 cf
 Storage Provided = 3976 cf
 Weir Crest El. = 471.00
 Cleanout El. = 468.00
 Bottom El. = 466.00
 Bottom Dimensions = 10' x 67'
 Depth = 4'
 Side Slope = 1:1
 Weir Length = 9'
 Top Embankment = 472.00

NOTE: Proposed Grades shown off-site from SDP-89-111

SCALE: 1"=50'

TRAP #1 (S.05T) ST-V
 Drainage Area = 1.5 Ac.
 Storage Req'd = 2700 cf
 Storage Provided = 2744 cf
 Weir Crest El. = 463.0
 Cleanout El. = 460.0
 Bottom El. = 458.0
 Bottom Dimensions = 10' x 45'
 Depth = 4'
 Side Slope = 1:1
 Weir Length = 6'
 Top Embankment = 464.0

DEVELOPER'S BUILDERS CERTIFICATE

"I/We certify that all development and construction will be done according to this plan of development and plan for erosion and sediment control and that all responsible personnel involved in the construction project will have a Certificate of Attendance at a Dept. of Natural Resources Approved Training Program for the Control of Sediment and Erosion before beginning the project. I also authorize periodic on-site inspection by the Howard Soil Conservation District or their authorized agents, as are deemed necessary."

[Signature] 12-11-88 Date



ENGINEER'S CERTIFICATE
 I hereby certify that this plan for Erosion and Sediment Control represents a practical and workable plan based on my personal knowledge of the site conditions and that it was prepared in accordance with the requirements of the Howard Soil Conservation District.

[Signature] 12-9-88 Date
 G. Nelson Clark

Requested for: HOWARD SCD.
 Name: *[Signature]*
 Date: 3-8-89
 U.S. Soil Conservation Service

THIS DEVELOPMENT PLAN IS APPROVED FOR SOIL EROSION AND SEDIMENT CONTROL BY THE HOWARD SOIL CONSERVATION DISTRICT.
[Signature] 3/8/89
 Approved Date

APPROVED FOR PUBLIC WATER AND PUBLIC SEWERAGE SYSTEMS, HOWARD COUNTY HEALTH DEPARTMENT.	DATE
COUNTY HEALTH OFFICER	
APPROVED: HOWARD COUNTY OFFICE OF PLANNING & ZONING	DATE
<i>[Signature]</i>	3-7-89
CHIEF DIVISION OF COMMUNITY PLANNING AND LAND DEVELOPMENT	DATE
<i>[Signature]</i>	3/31/89
APPROVED: HOWARD COUNTY DEPT. OF PUBLIC WORKS	DATE
<i>[Signature]</i>	3/31/89
CHIEF, BUREAU OF ENGINEERS	DATE
<i>[Signature]</i>	3/31/89

CLARK • FINEROCK & SACKETT, INC. ENGINEERS • PLANNERS • SURVEYORS 7135 MINSTREL WAY • COLUMBIA MD 21045 • (301) 381-7500 - BALTO • (301) 621-8100 - WASH			
DESIGNED	DGT	SCALE	As Shown
DRAWN	VLM	DRAWING	3 OF 4
CHECKED	DGT	JOB NO.	88-114
DATE	12-9-88	FILE NO.	88-114-D

