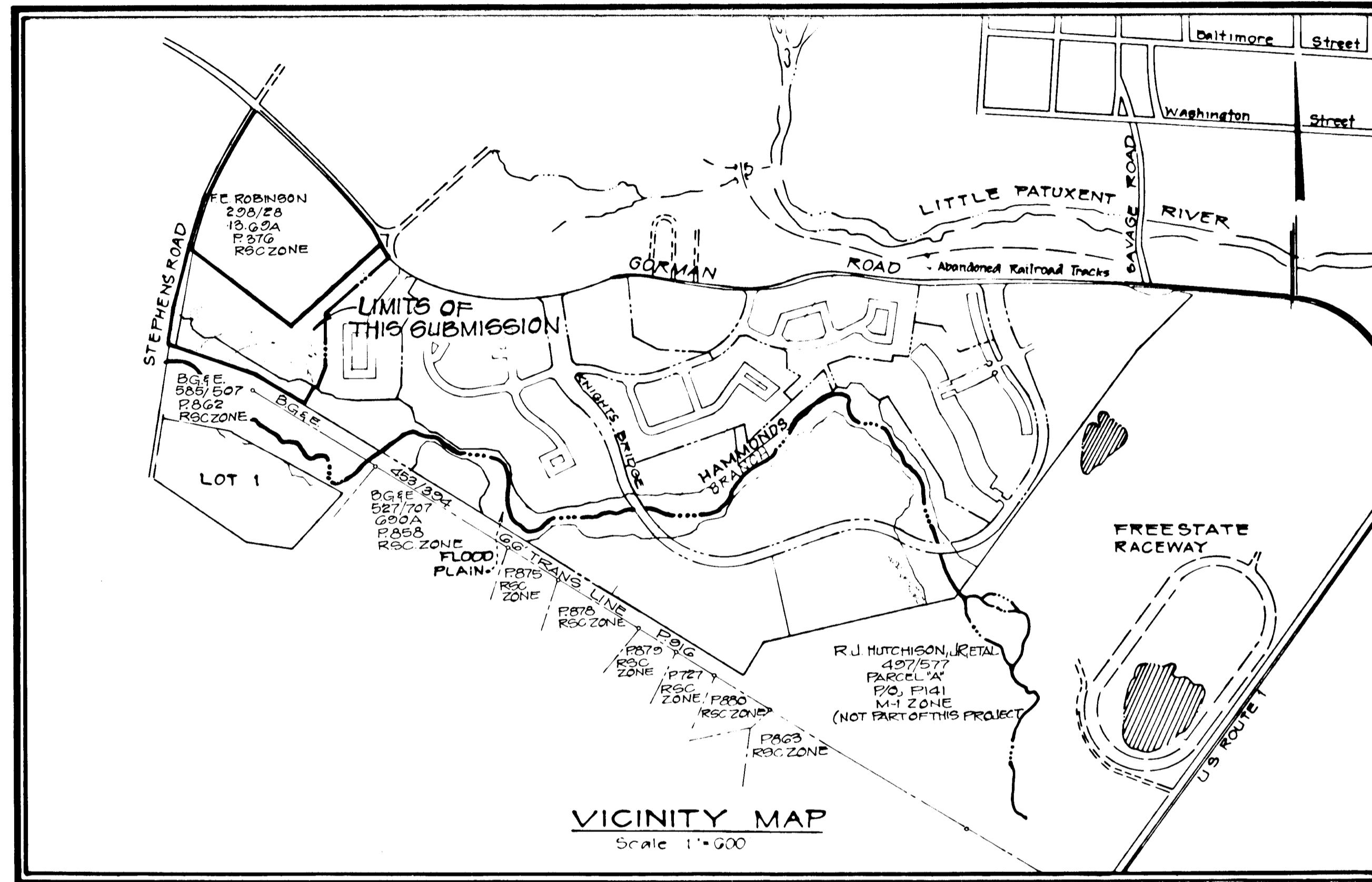


STRUCTURE SCHEDULE							
NO.	TYPE	INV. IN	INV. OUT	UPPER END	LOWER END	HO.COST	LOCATION
I-1	A-5 INLET	268.57	269.88	269.82	269.82	6.D.4.01	1+02.53
I-2	A-5 INLET	264.46	263.36	269.82	269.82	6.D.4.01	1+92.53
I-3	A-5 INLET	267.82	267.46	271.72	271.72	6.D.4.01	8+65.93
I-4	A-5 INLET		268.10	271.72	271.72	6.D.4.01	8+65.93
M-1	MANHOLE	265.60	265.10	271.90	271.90	G.5.12	
M-2	MANHOLE	261.00	258.70	265.00	265.00	G.5.12	
E-1	METAL END SECT.		262.40			6.D.5.51	
E-2	METAL END SECT.	265.34				6.D.5.51	
E-3	METAL END SECT.		257.00			6.D.5.51	

BOWLING BROOK FARMS PARCEL L LOTS L-1 THRU L-55

PIPE SCHEDULE			
SIZE	TYPE	CLASS	LENGTH
15"	CMP		100'
18"	CMP		41'
21"	CMP		47'



- GENERAL NOTES**
- THE APPROXIMATE LOCATION OF ALL UTILITIES IS SHOWN BASED ON INFORMATION OBTAINED FROM AVAILABLE RECORDS. THE CONTRACTOR SHALL LOCATE, PROTECT AND SUPPORT THE EXISTING UTILITIES AND MAINTAIN UNINTERRUPTED SERVICE. ANY DAMAGE INCURRED SHALL BE REPAIRED IMMEDIATELY TO THE SATISFACTION OF THE ENGINEER/INSPECTOR, AT THE CONTRACTOR'S EXPENSE.
 - CONTRACTOR SHALL LOCATE EXISTING UTILITIES A MINIMUM OF TWO (2) WEEKS IN ADVANCE OF CONSTRUCTION OPERATIONS IN THE VICINITY OF PROPOSED UTILITIES AT HIS OWN EXPENSE.
 - CONTRACTOR SHALL NOTIFY THE FOLLOWING UTILITIES OR AGENCIES AT LEAST FIVE (5) WORKING DAYS BEFORE STARTING WORK SHOWN ON THESE PLANS.
 - STATE HIGHWAY ADMINISTRATION - 531-5533
 - BALTIMORE GAS & ELECTRIC COMPANY - 561-2585 (CONTRACTOR SERVICES)
 - BALTIMORE GAS & ELECTRIC COMPANY - 234-6313 (UNDERGROUND DAMAGE CONTROL)
 - BALTIMORE GAS & ELECTRIC COMPANY - 298-9013 (TROUBLE SHOOTING)
 - "MISS UTILITY" - 800-257-7777
 - CHESAPEAKE & POTOMAC (C&P) TELEPHONE COMPANY - 725-9976
 - BUREAU OF UTILITIES/HOWARD COUNTY - 992-2366
 - ALL DETAILS NOT SHOWN ON THE DRAWINGS SHALL BE CONSTRUCTED IN ACCORDANCE WITH HOWARD COUNTY STANDARD DETAILS.
 - ALL MATERIALS AND CONSTRUCTION METHODS SHALL BE IN ACCORDANCE WITH HOWARD COUNTY SPECIFICATIONS AND HOWARD COUNTY DESIGN MANUAL, VOLUME IV.
 - ALL TRAFFIC CONTROL DEVICES SHALL BE IN ACCORDANCE WITH STANDARD SPECIFICATIONS FOR CONSTRUCTION AND MATERIALS, LATEST EDITION AND THE MANUAL ON UNIFORM TRAFFIC CONTROL DEVICES, LATEST EDITION.
 - TREES SHALL BE PROTECTED FROM DAMAGE TO THE MAXIMUM EXTENT POSSIBLE. TREES SIX INCH (6") DIAMETER OR GREATER (MEASURED FOUR FEET (4') ABOVE EXISTING GRADE) ADJACENT TO THE LIMITS OF CONSTRUCTION SHALL NOT BE REMOVED OR DAMAGED BY THE CONTRACTOR.
 - ALL HORIZONTAL AND VERTICAL CONTROLS ARE BASED ON MARYLAND STATE PLANE COORDINATES SYSTEM PROVIDED BY HOWARD COUNTY.
 - TOPOGRAPHY TAKEN FROM MAPS PREPARED BY PHOTOGRAMMETRY BY "AERIAL SURVEYS" IN 1984. TOPOGRAPHY FIELD CHECKED 1986.
 - ALL PIPE ELEVATIONS ARE INVERT ELEVATIONS.
 - CLEAR ALL UTILITIES BY A MINIMUM OF 12" CLEAR, CLEAR ALL POLES BY 2'-0" MINIMUM OR TUNNEL AS REQUIRED. ANY COST INCURRED TO THE CONTRACTOR FOR TUNNELING OR BRACING AT POLES SHALL BE INCLUDED IN UNIT PRICES BID FOR EXCAVATION AND SHALL BE INCLUDED IN UNIT PRICES BID FOR EXCAVATION BACKFILL.
 - ALL PIPE BEDDING SHALL BE CLASS C.
 - ROAD RIGHT-OF-WAY INFORMATION IS SHOWN ON THE RECORD PLATS.
 - SPOT ELEVATIONS SHOWN ARE TOP OF CURB UNLESS OTHERWISE NOTED.
 - SHADED AREAS INDICATE WATER, SEWER, UTILITY, DRAINAGE AND/OR ACCESS EASEMENT(S).

LEGEND

- STORM DRAIN PROPOSED (Symbol: circle with 'E')
- PROPOSED R/W (Symbol: dashed line)
- LIMITS OF SUBMISSION (Symbol: solid line)
- EASEMENT (Symbol: dotted line)
- HC HANDICAP PK'G SPACE (Symbol: square with 'H')
- FLARED END SECTION (Symbol: triangle with 'F')
- MGR HANDICAP RAMP (Symbol: square with 'M')
- N° OF PARKING SPACES IN PARKING BAY (Symbol: circle with 'P')
- 250 WATT MERCURY VAPOR LAMP PENDANT MOUNTED ON 30 FOOT GALVANIZED STEEL POLE (Symbol: circle with 'L')
- 175 WATT MERCURY VAPOR LAMP POLE TOP FIXTURE ON 14 FOOT GRAY FIBERGLASS POLE (Symbol: circle with 'L')
- ¢ OF ROAD CURVE NUMBER (Symbol: circle with 'C')
- ¢ OF ROAD TANGENT NUMBER (Symbol: square with 'T')

PAVING AND STORM DRAIN CONSTRUCTION PLANS HOWARD COUNTY, MARYLAND

- LANDSCAPING NOTES**
- Contractor shall verify location of all underground utilities prior to planting (see note #3 on sheet #1).
 - All plant material and planting shall be in accordance with "American standard for nursery stock" by the A.A.N.
 - Substitutions may be permitted with the approval of the landscape architect, (762-2220).
 - Place "Green Vase Zelkova" and "Summer Shade Maple" at radius points on the parking islands and 5' behind the sidewalk along the roadways.
 - Place "Regent Scholar Tree", "Greenspire Linden", and "Hedge Maple" 3' behind sidewalk.

PLANT SCHEDULE

PLANT NAME	SIZE	QUANTITY	REMARKS
ZELKOVA SERRATA "GREEN VASE"	2 1/2"-3" CAL	5	B & B
GREEN VASE ZELKOVA	12-14' HT.		
ACER PLATANOIDES "SUMMERSHADE"		13	
SUMMER SHADE MAPLE			
SOPHORA JAPONICA "REGENT"		5	
REGENT SCHOLAR TREE			
TILIA CORDATA "GREENSPIRE"		11	
GREENSPIRE LINDEN			
ACER CAMPESTRE		3	
HEDGE MAPLE			

- INDEX TO DRAWINGS**
- TITLE SHEET
 - STREET GRADE PLAN & PROFILE - BIRKENHEAD COURT
 - SECTION DETAILS & PROFILE
 - DRAINAGE AREA MAP
 - EROSION AND SEDIMENT CONTROL PLAN
 - EROSION AND SEDIMENT CONTROL PLAN

REVIEWED FOR HOWARD SOIL CONSERVATION DISTRICT AND MEETS TECHNICAL REQUIREMENT

APPROVED BY HOWARD COUNTY DEPARTMENT OF PLANNING AND ZONING

APPROVED BY HOWARD COUNTY OFFICE OF PLANNING AND ZONING

OWNER/DEVELOPER
 GORMAN ROAD LIMITED PARTNERSHIP
 C/O JAMES F. KNOTT DEVELOPMENT CORPORATION
 110 WEST ROAD, SUITE 203
 TOWSON MARYLAND 21204
 (801) 321-6436

Patton Harris Rust and Associates
 A Professional Corporation
 Engineers, Surveyors, Planners and Landscape Architects
 7609 Standish Place Rockville, Maryland 20855 (301)762-2220

**BOWLING BROOK FARMS
PARCEL L
LOTS L-1 THRU L-55
A RESUBDIVISION OF LOT 71, BOWLING BROOK FARMS
TAX MAP 47 PARCEL 141
SIXTH ELECTION DISTRICT HOWARD COUNTY, MARYLAND**

KEY
 Z
 A
 S
 T
 H

REVISION APPROVED BY

NO.	DESCRIPTION	DATE	APPROVED	DATE
3	REVISED FOR CMP			
2	REVISED FOR CMP	8/4/88		
1	ISSUED FOR REVIEW	8/1/88		

REVISION APPROVED BY

ROBINSON'S PROMISE
F.E. ROBINSON
L.298 F.28
ZONE: RSC

73,200 N
E 43,500

BEARINGS & DISTANCES

BEARING	DISTANCE	STATION
S 82°21'33" E	112.19'	0+00 - 1+12.19
S 47°51'33" E	145.14'	1+87.45 - 3+32.60
S 65°21'33" E	242.95'	5+31.13 - 7+74.08
S 24°38'27" W	41.47'	7+74.08 - 8+15.55
S 85°38'27" W	69.97'	8+15.55 - 9+21.73
N 4°21'33" W	85.58'	9+21.73 - 10+07.31
N 24°38'27" E	20.59'	10+17.43 - 10+38.01

CURVE DATA

CURVE NO.	PC TO PT	RADIUS	Δ	ARC LENGTH	TANGENT	CHORD BEARING
1	1+12.19 - 1+87.45	125.00'	34°30'00"	75.27'	38.81'	S 65°06'33" E
2	3+32.60 - 5+31.13	650.00'	17°30'00"	198.53'	100.04'	S 56°26'33" E
3	8+15.55 - 8+31.75	34.00'	61°00'00"	36.20'	20.03'	S 55°08'27" W
4	10+17.43 - 10+17.43	20.00'	29°00'00"	10.12'	5.17'	N 0°08'27" E

SCALE: 1" = 50'

STEPHENS ROAD

* TO BE BUILT UNDER F-87-142 (BOWLING BROOK FARMS PARCEL K)

* EX CURB & GUTTER & SIDEWALK TO BE REMOVED AS NECESSARY.

EDGE OF EX. PAVING

EX. 12" WATER LINE

EX. 15" RCP

EX. 4" SIDEWALK

EX. CURB & GUTTER

PROPOSED GRADE

EXISTING GRADE

BRL (RT)

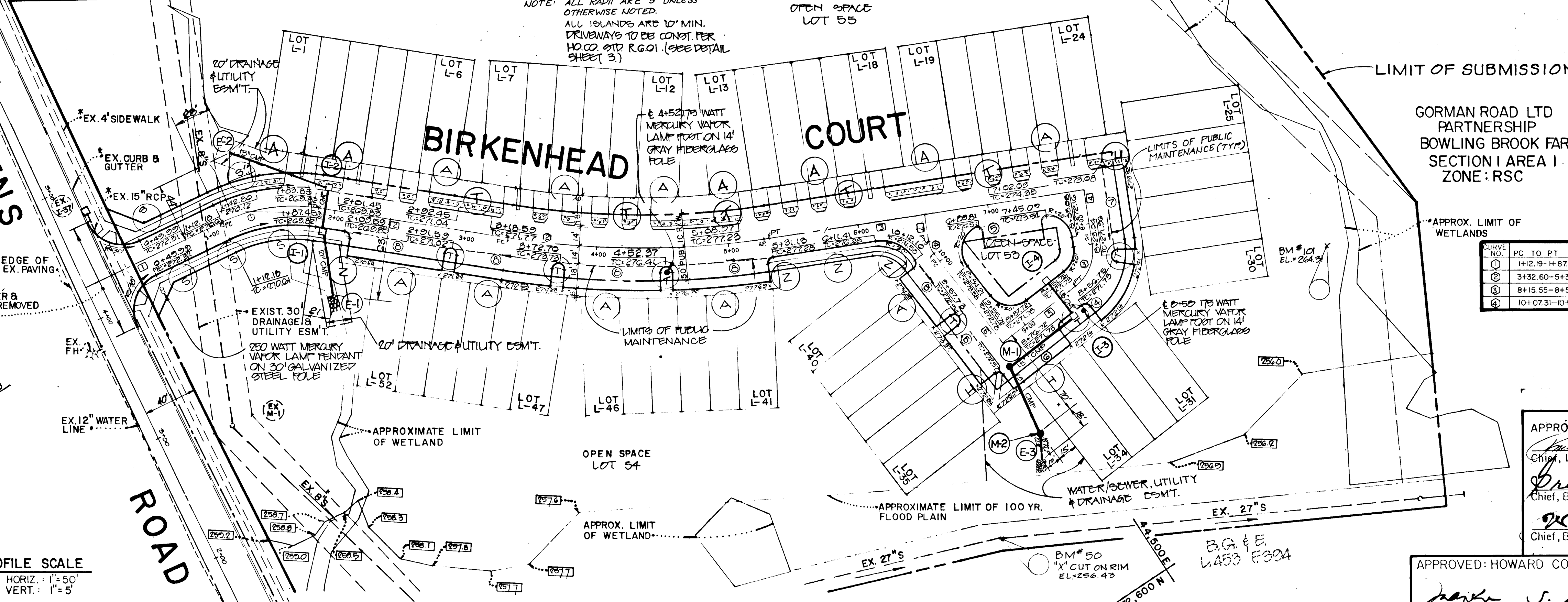
BRL (LT)

PROFILE SCALE

HORIZ: 1" = 50'

VERT: 1" = 5'

NOTE: ALL RADII ARE 5' UNLESS OTHERWISE NOTED.
ALL ISLANDS ARE 10' MIN.
DRIVWAYS TO BE CONST. PER HO.CC. STD. R.G.O.I. (SEE DETAIL SHEET 3)



APPROVED: HOWARD COUNTY DEPARTMENT OF PUBLIC WORKS

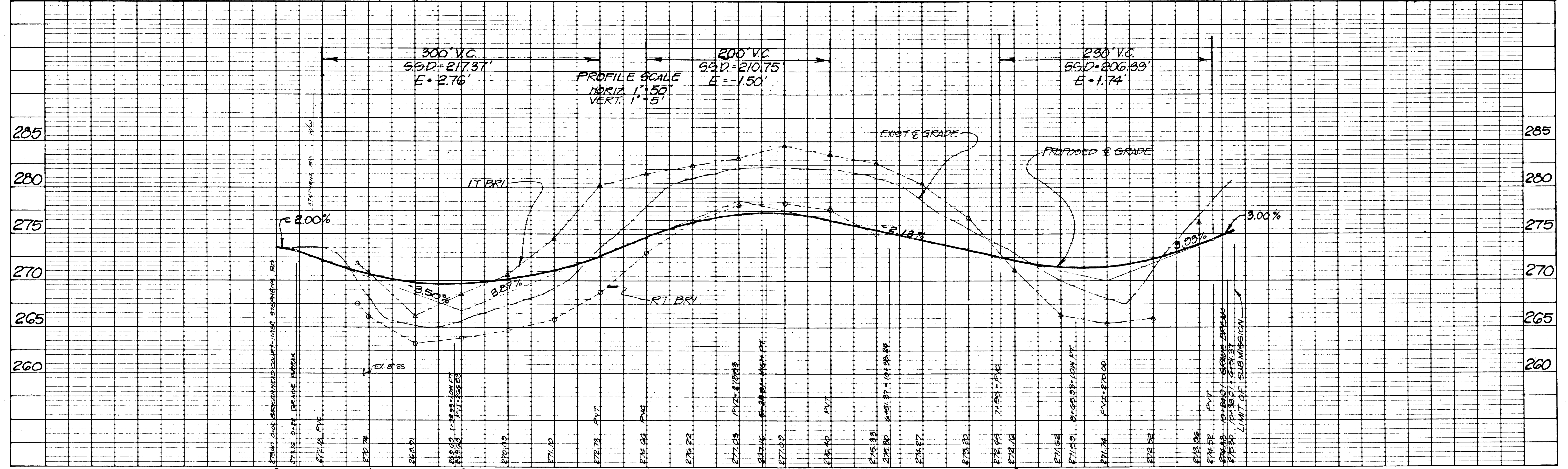
Paul D. Jensen 8/25/88
Chief, Land Development Division Date

Drewville W. Weiland 8/24/88
Chief, Bureau of Highways Date

William R. Day 8/25/88
Chief, Bureau of Engineering Date

APPROVED: HOWARD COUNTY OFFICE OF PLANNING AND ZONING

Mark J. P. Langell 9-1-88
Chief, Division of Community Planning & Land Development Date



177

NO.	DESCRIPTION	DATE	APPROVED	DATE
3	REVISED FOR SUBMITTAL	11/08/88		
2	REVISED FOR SUBMITTAL	01/14/88		
1	ISSUED FOR REVIEW	06/16/88		

REVISION APPROVED BY



REVISED

PAVING & STORM DRAIN CONSTRUCTION PLANS

BIRKENHEAD COURT

BOWLING BROOK FARMS

Patton Harris Rust and Associates

A Professional Corporation

Engineers, Surveyors, Planners and Landscape Architects

7609 STANDISH PLACE ROCKVILLE MD. 20855 (301) 762-2220

BOWLING BROOK FARMS

PARCEL L

LOTS L-1 THRU L-55

A RESUBDIVISION OF LOT 71, BOWLING BROOK FARMS

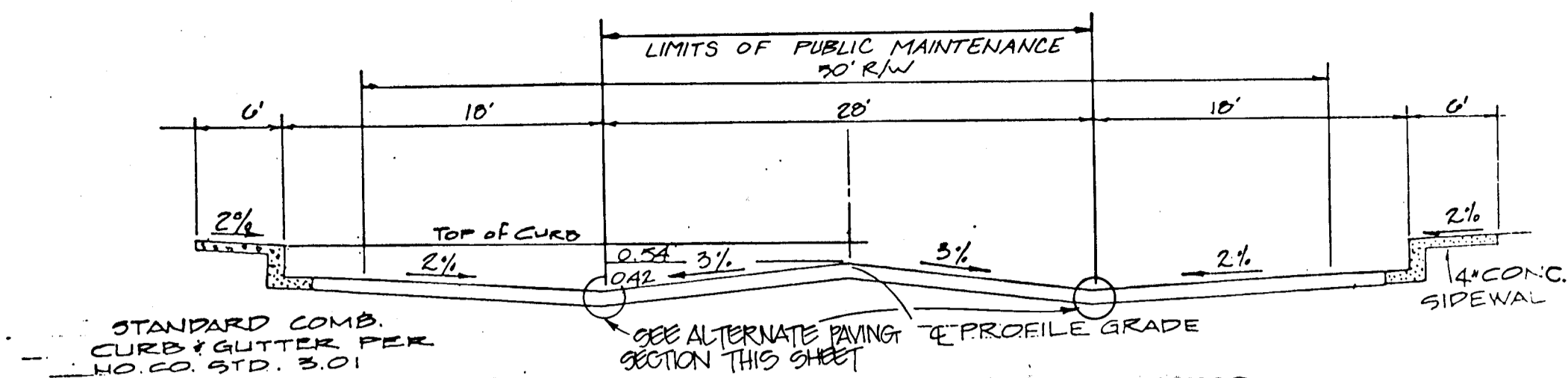
TAX MAP 47 PARCEL 141

SIXTH ELECTION DISTRICT HOWARD COUNTY, MARYLAND

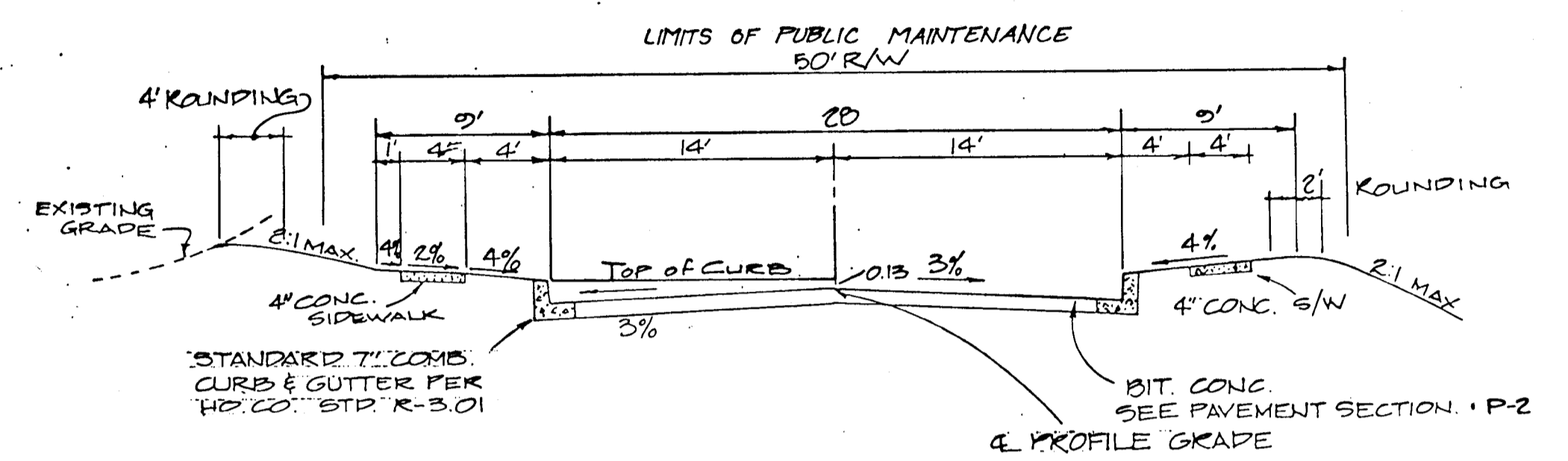
SURVEY P.H.R. & A.	DATE
DESIGN M.J.K./KOR	
DRAWN C.B.R.	
CHECKED M.J.K./KOR	
SCALE AS SHOWN	
C.I.	

SHEET 2 OF 6

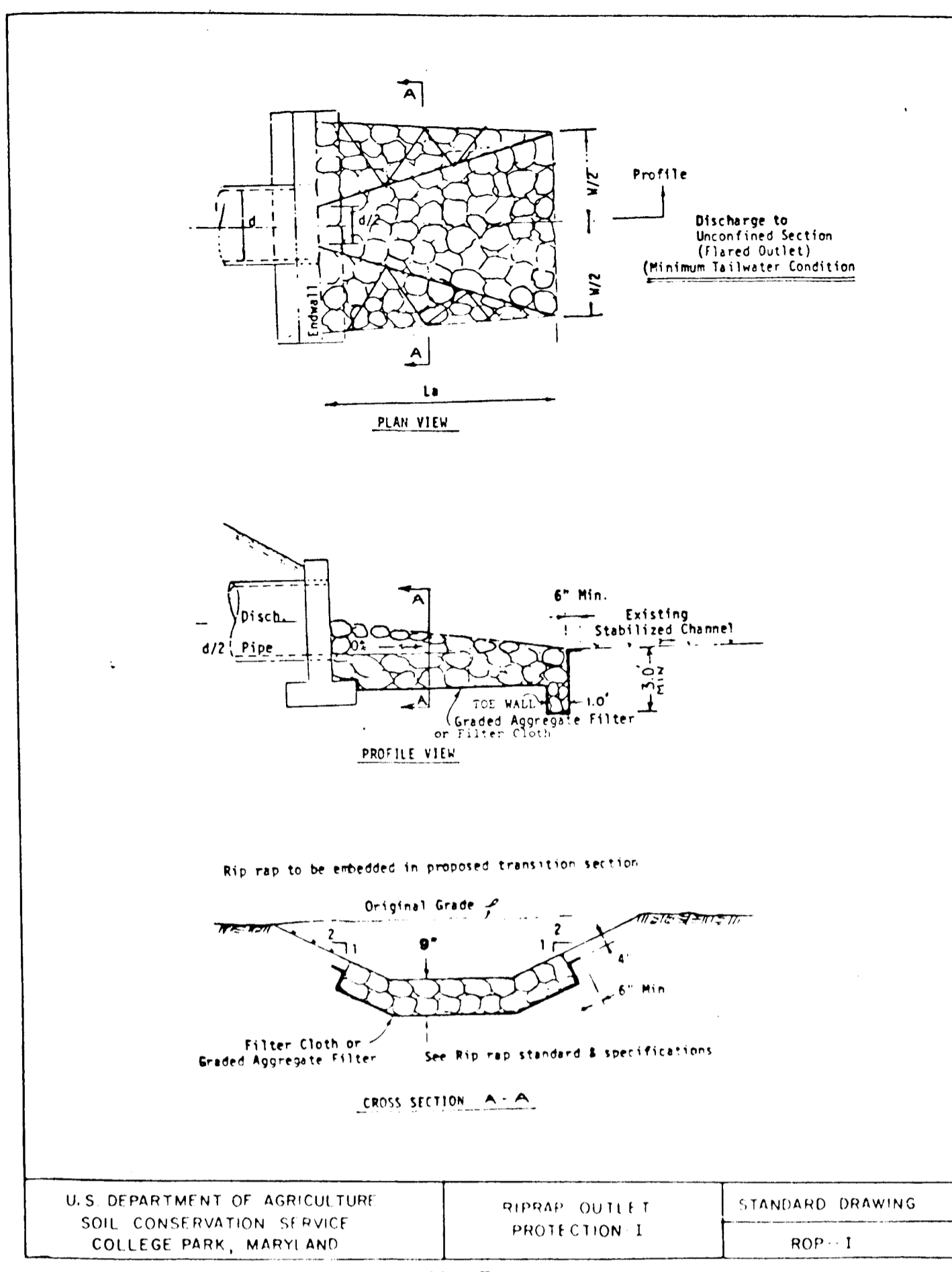
FILE NO. 2184-1-0



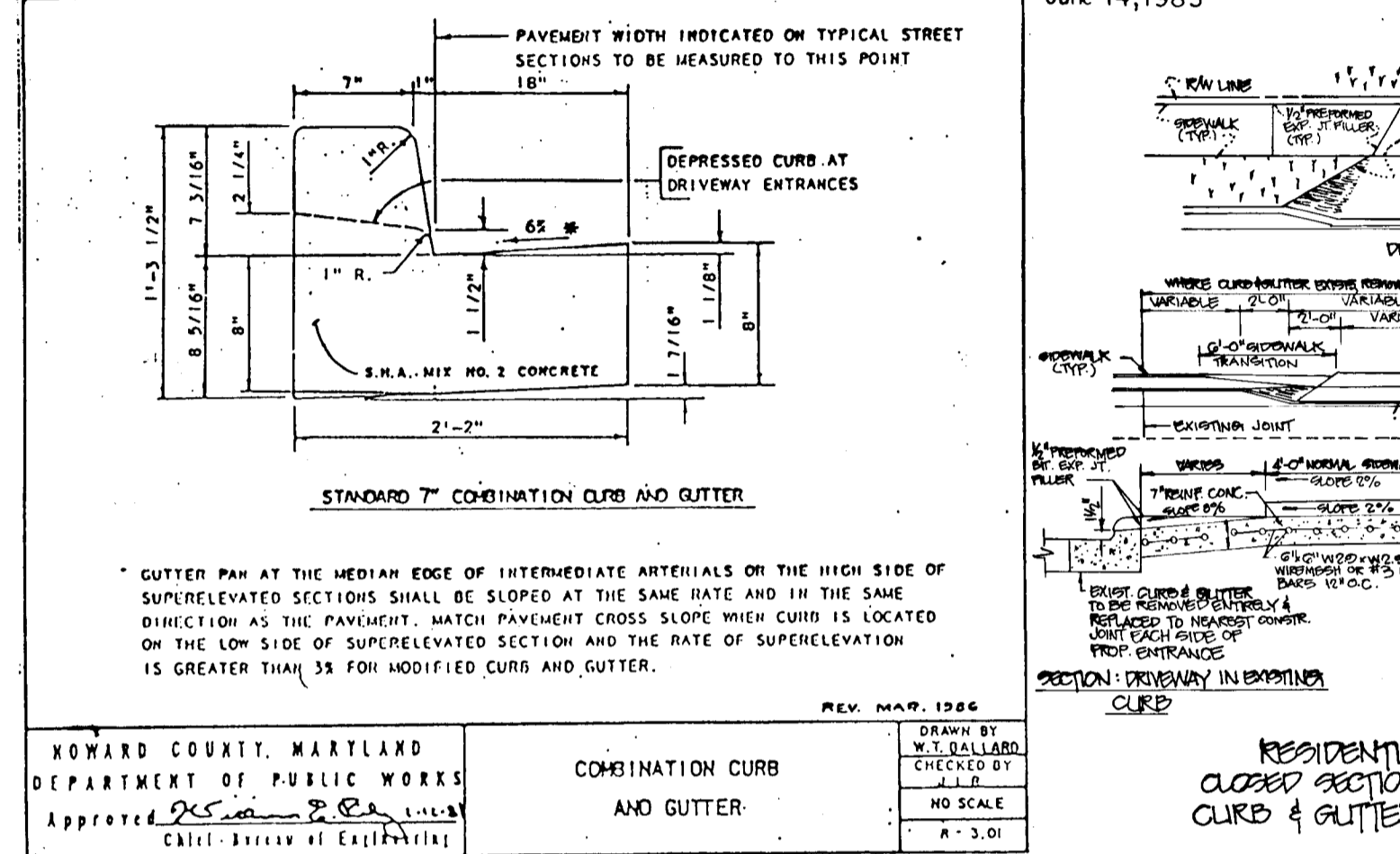
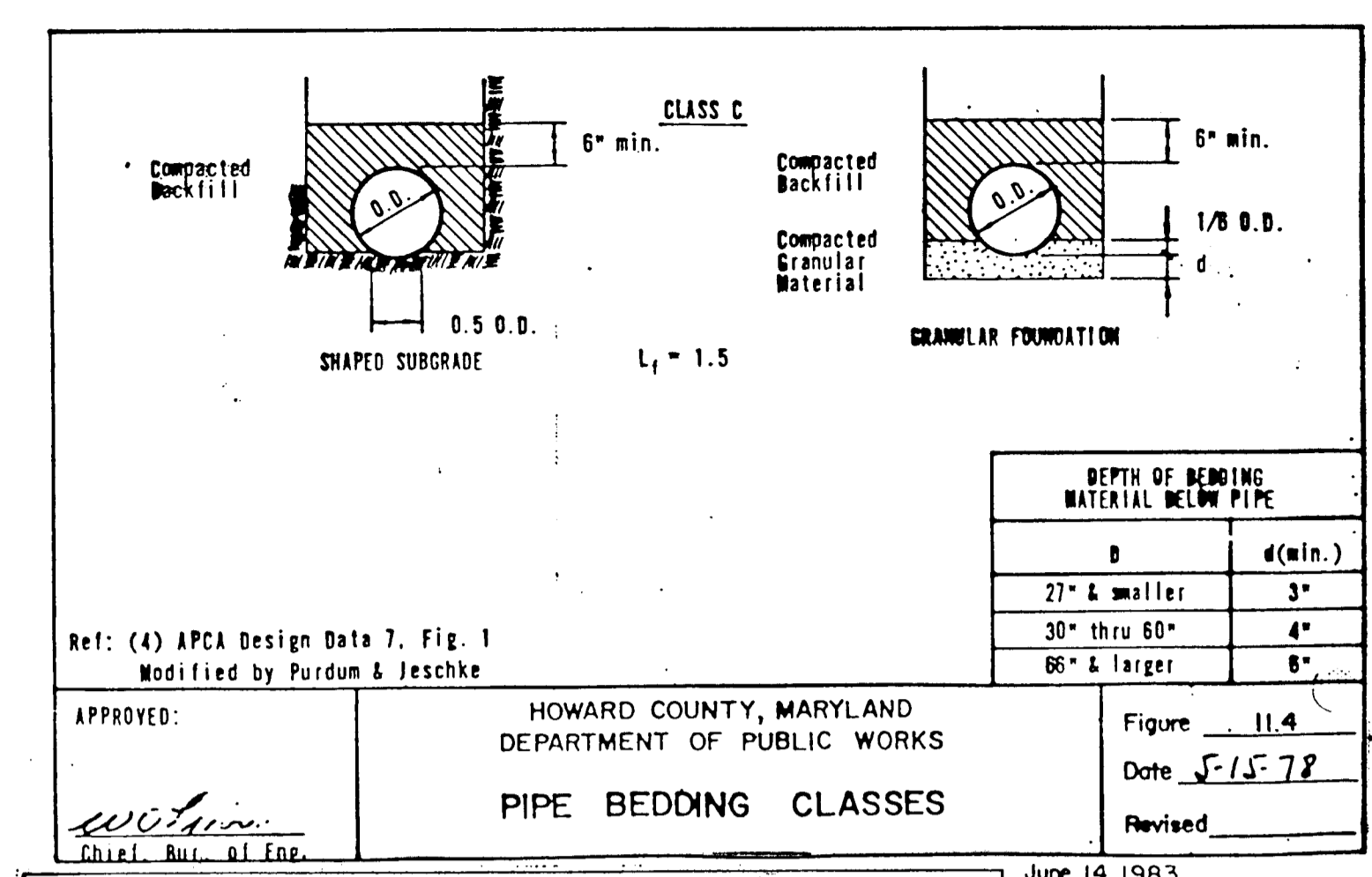
TYPICAL ROAD SECTION WITH PARKING
NOT TO SCALE



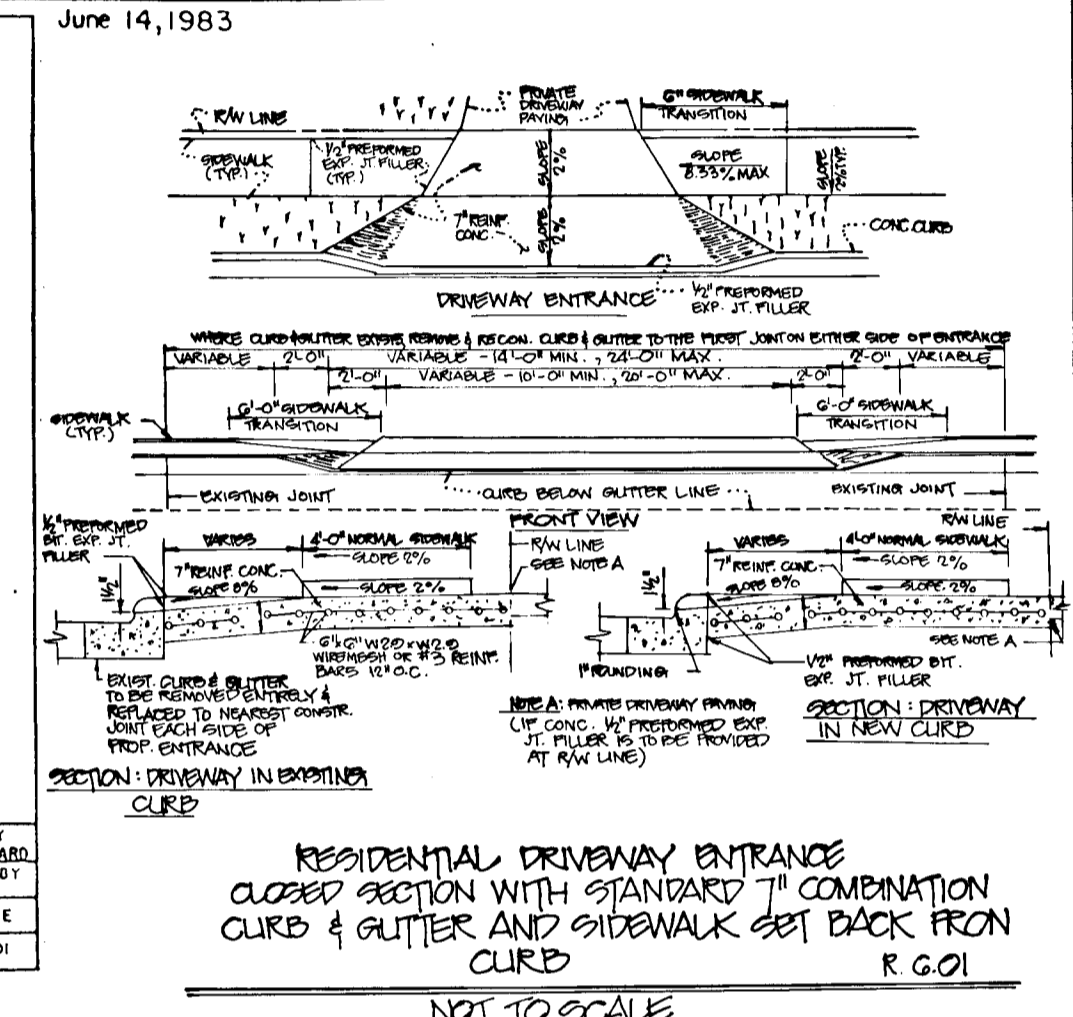
TYPICAL ROAD SECTION
NOT TO SCALE



U.S. DEPARTMENT OF AGRICULTURE
SOIL CONSERVATION SERVICE
COLLEGE PARK, MARYLAND
RIPRAP OUTLET PROTECTION I
STANDARD DRAWING
ROP-1
5/8 07

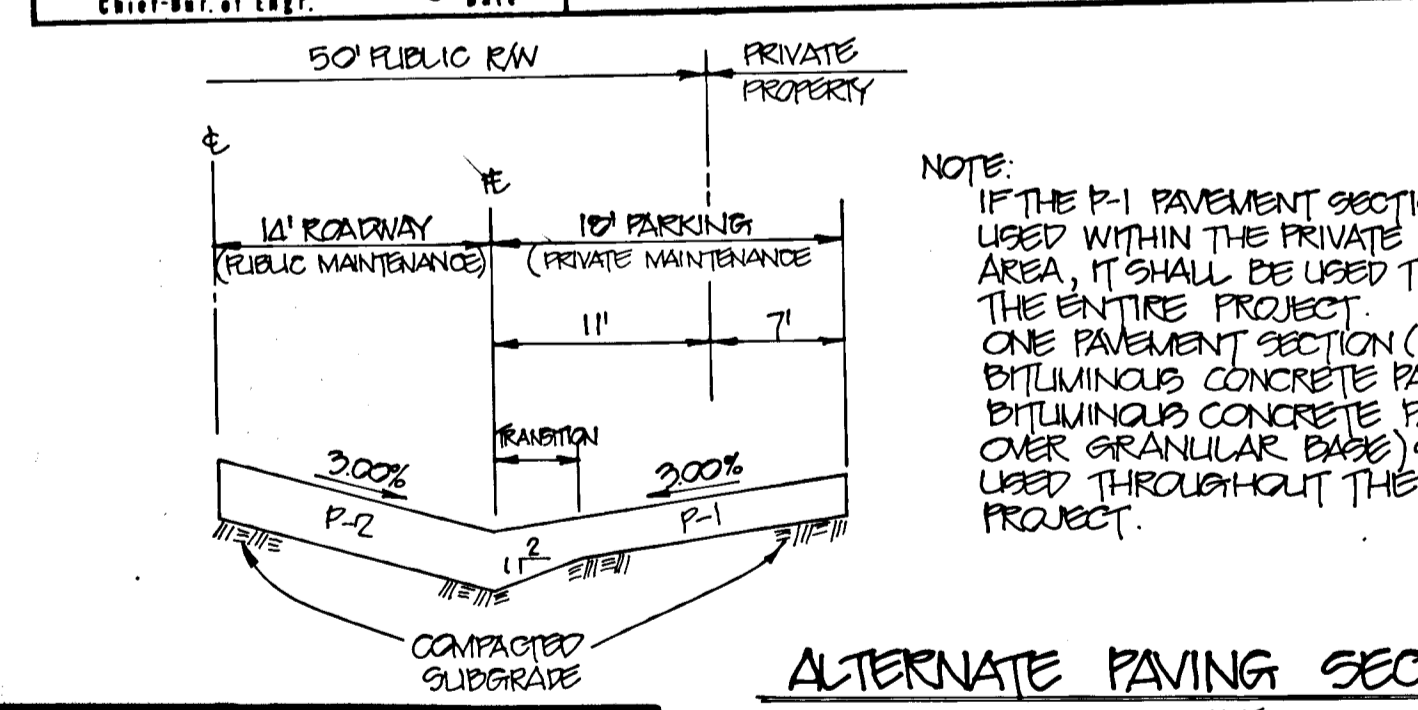


HOWARD COUNTY, MARYLAND
DEPARTMENT OF PUBLIC WORKS
COMBINATION CURB AND GUTTER
REV. MAR. 1986
APPROVED: [Signature] Chief, Bureau of Engineering

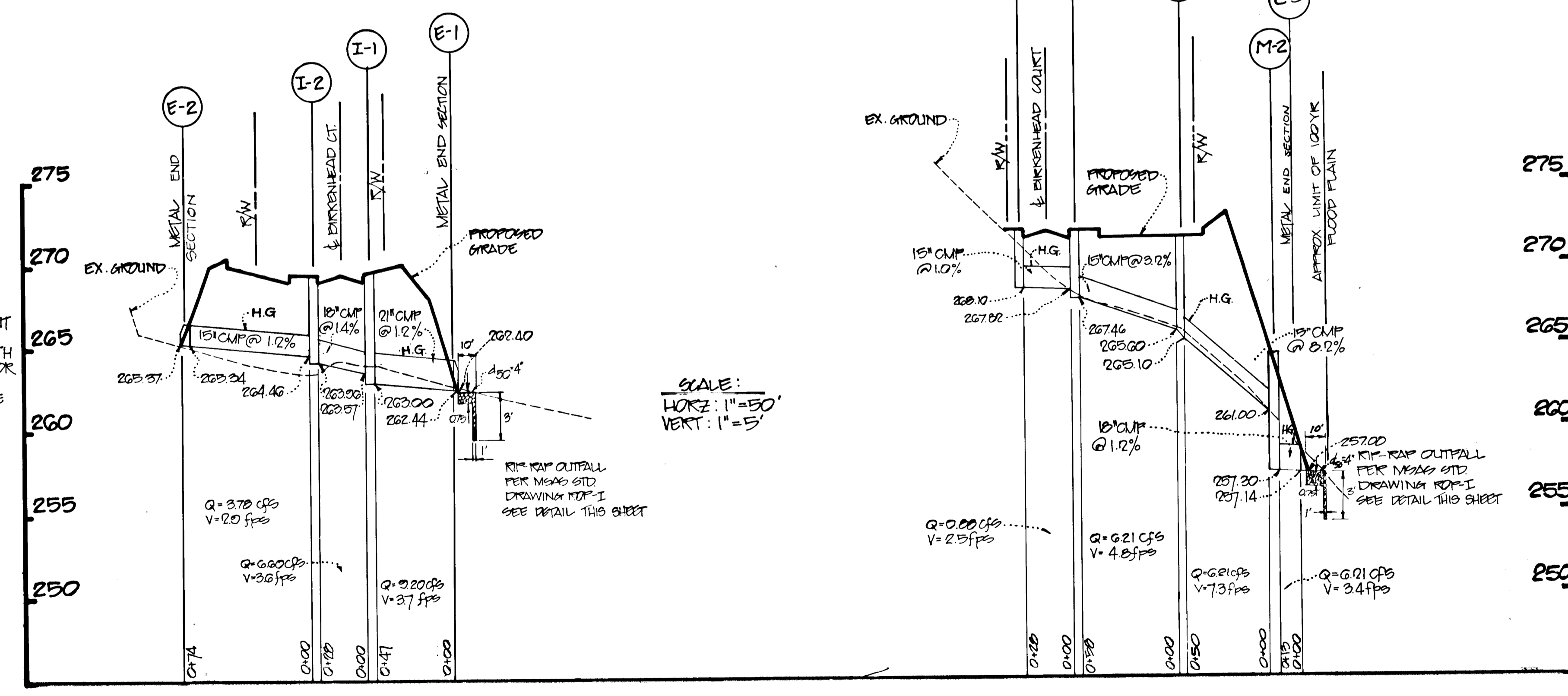


RESIDENTIAL DRIVEWAY ENTRANCE
CLOSED SECTION WITH STANDARD 7" COMBINATION CURB & GUTTER AND SIDEWALK SET BACK FROM CURB
NOT TO SCALE
R.G.01

SECTION NUMBER	ROAD AND STREET CLASSIFICATION	PAVEMENT MATERIALS	
		FULL DEPTH BIT. CONC. ALTERNATE	GRANULAR BASE ALTERNATES
P-1	PARKING AREAS AND TRAVELWAYS APARTMENTS AND COMMERCIAL-INDUSTRIAL ZONES WITH NO HEAVY TRUCKS	1" BIT. CONC. SURFACE 4" BIT. CONC. BASE	1" BIT. CONC. SURFACE 2" BIT. CONC. BASE 8" CRUSHED RUN BASE COURSE OR 4" DENSE GRADE STABILIZED AGGREGATE BASE COURSE
P-2	RESIDENTIAL ZONES LOCAL CUL-DE-SACS ALLEYS AND PRIVATE ROADS SERVING INDIVIDUAL LOTS APARTMENTS AND COMMERCIAL-INDUSTRIAL ZONES WITH NO MORE THAN 10 HEAVY TRUCKS PER DAY*	1 1/2" BIT. CONC. SURFACE 5" BIT. CONC. BASE	1 1/2" BIT. CONC. SURFACE 2 1/2" BIT. CONC. BASE PRIME 8" CRUSHED RUN BASE COURSE OR 4" DENSE GRADE STABILIZED AGGREGATE BASE COURSE
P-3	RESIDENTIAL ZONES MINOR AND MAJOR COLLECTORS COMMERCIAL-INDUSTRIAL ZONES LOCAL AND CUL-DE-SACS ALLEYS	1 1/2" BIT. CONC. SURFACE 1 1/2" BIT. CONC. BASE 5" BIT. CONC. BASE	1 1/2" BIT. CONC. SURFACE 4 1/2" BIT. CONC. BASE PRIME 6" CRUSHED RUN BASE COURSE OR 4 1/2" DENSE GRADE STABILIZED AGGREGATE BASE COURSE
P-4	COMMERCIAL-INDUSTRIAL ZONES MINOR COLLECTOR	1 1/2" BIT. CONC. SURFACE 3 1/2" BIT. CONC. BASE 5" BIT. CONC. BASE	1 1/2" BIT. CONC. SURFACE 1 1/2" BIT. CONC. BASE PRIME 5" CRUSHED RUN BASE COURSE OR 4" DENSE GRADE STABILIZED AGGREGATE BASE COURSE



ALTERNATE PAVING SECTION
NOT TO SCALE



SCALE:
HORIZ: 1"=50'
VERT: 1"=5'

APPROVED: HOWARD COUNTY DEPARTMENT OF PUBLIC WORKS
[Signature] 8/15/88
Chief, Land Development Division
[Signature] 8/24/88
Chief, Bureau of Highways
[Signature] 8/25/88
Chief, Bureau of Engineering

APPROVED: HOWARD COUNTY OFFICE OF PLANNING AND ZONING
[Signature] 8-1-88
Chief, Division of Community Planning & Land Development

NO.	DESCRIPTION	DATE	APPROVED	DATE
1	ISSUED FOR REVIEW	8/1/88	[Signature]	8/1/88
2	REVISION FOR [Signature]	8/1/88	[Signature]	8/1/88
3	REVISION FOR [Signature]	8/1/88	[Signature]	8/1/88

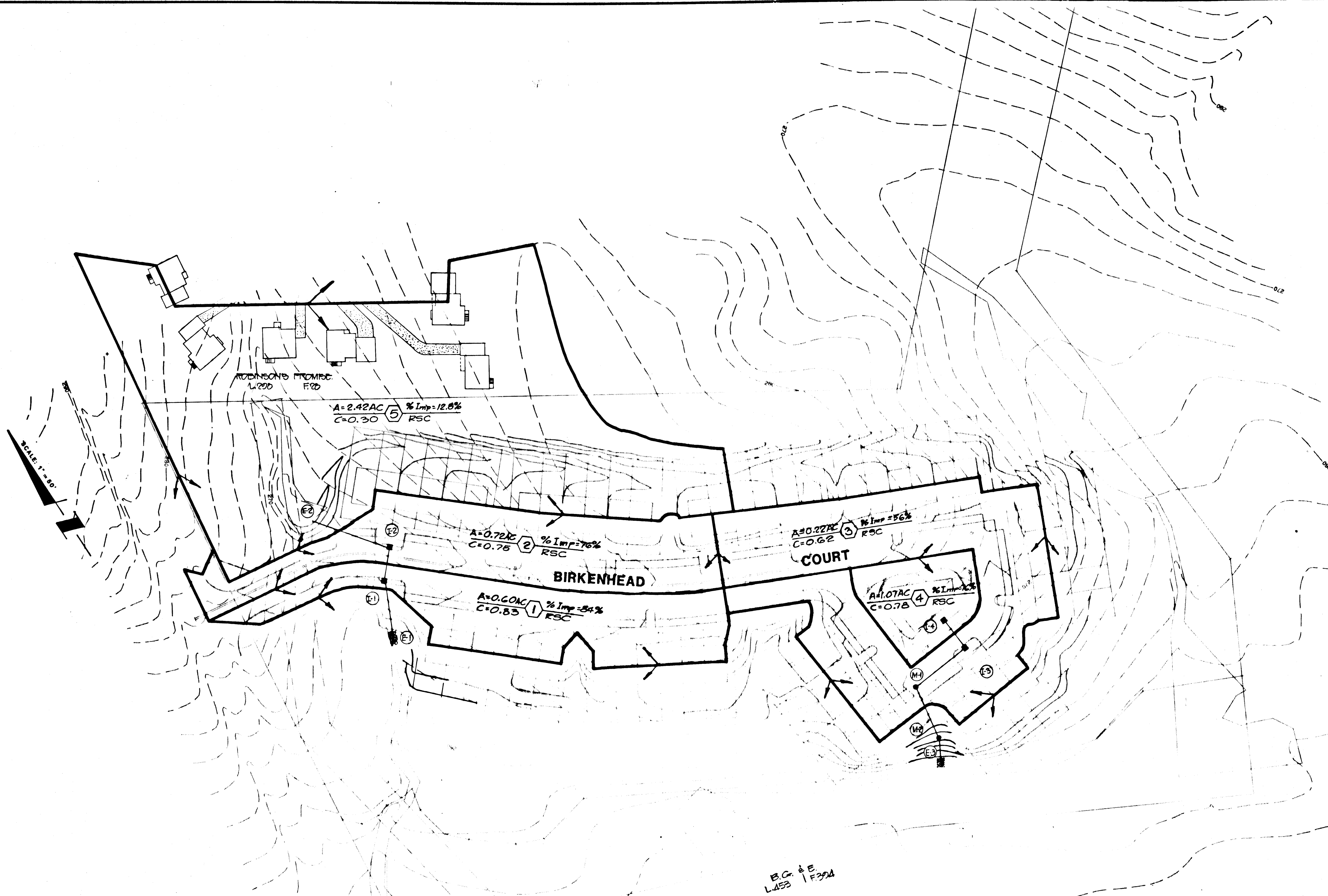
REVISED

PAVING & STORM DRAIN CONSTRUCTION PLANS
SECTION, DETAILS & PROFILE

Patton Harris Rust and Associates
A Professional Corporation
Engineers, Surveyors, Planners and Landscape Architects
7609 Standish Place Rockville, Maryland 20855 (301)762-2220

BOWLING BROOK FARMS
PARCEL L
LOTS L-1 THRU L-55
A RESUBDIVISION OF LOT 71, BOWLING BROOK FARMS
TAX MAP 47 PARCEL 141
SIXTH ELECTION DISTRICT HOWARD COUNTY, MARYLAND

SURVEY _____ DATE _____
DESIGN K.O.R.
DRAWN C.B.R. SHEET 3 OF 6
CHECKED _____
SCALE _____ FILE NO. 2104-1-3
C.I. _____



B.G. & E.
L-453 F-204

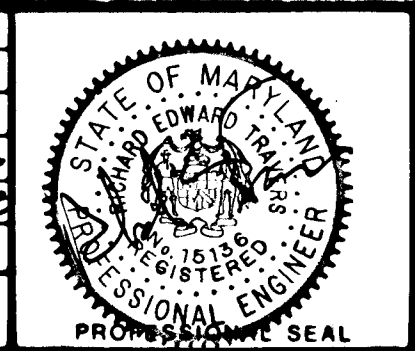
APPROVED: HOWARD COUNTY DEPARTMENT OF PUBLIC WORKS
James H. [Signature] 8/25/88
 Chief, Land Development Division Date
Lawrence W. [Signature] 8/24/88
 Chief, Bureau of Highways Date
William R. [Signature] 8-25-88
 Chief, Bureau of Engineering Date

APPROVED: HOWARD COUNTY OFFICE OF PLANNING AND ZONING
Frank J. [Signature] 9-1-88
 Chief, Division of Community Planning & Land Development LKS Date

127

NO.	DESCRIPTION	DATE	APPROVED	DATE
2	ORIGINATION ISSUED BY M.C.			6/1/88
1	ISSUED FOR REVIEW			6/1/88

REVISION APPROVED BY



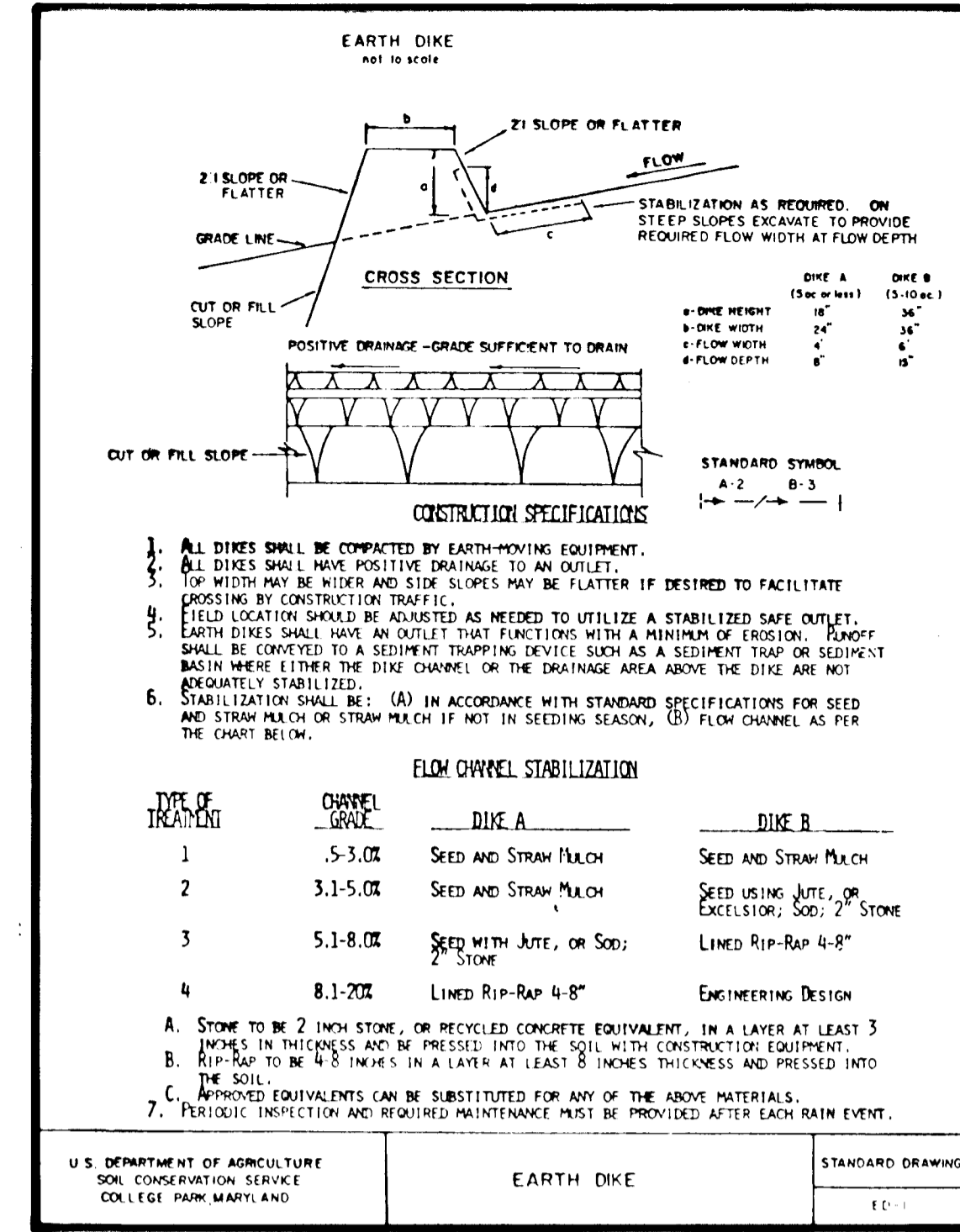
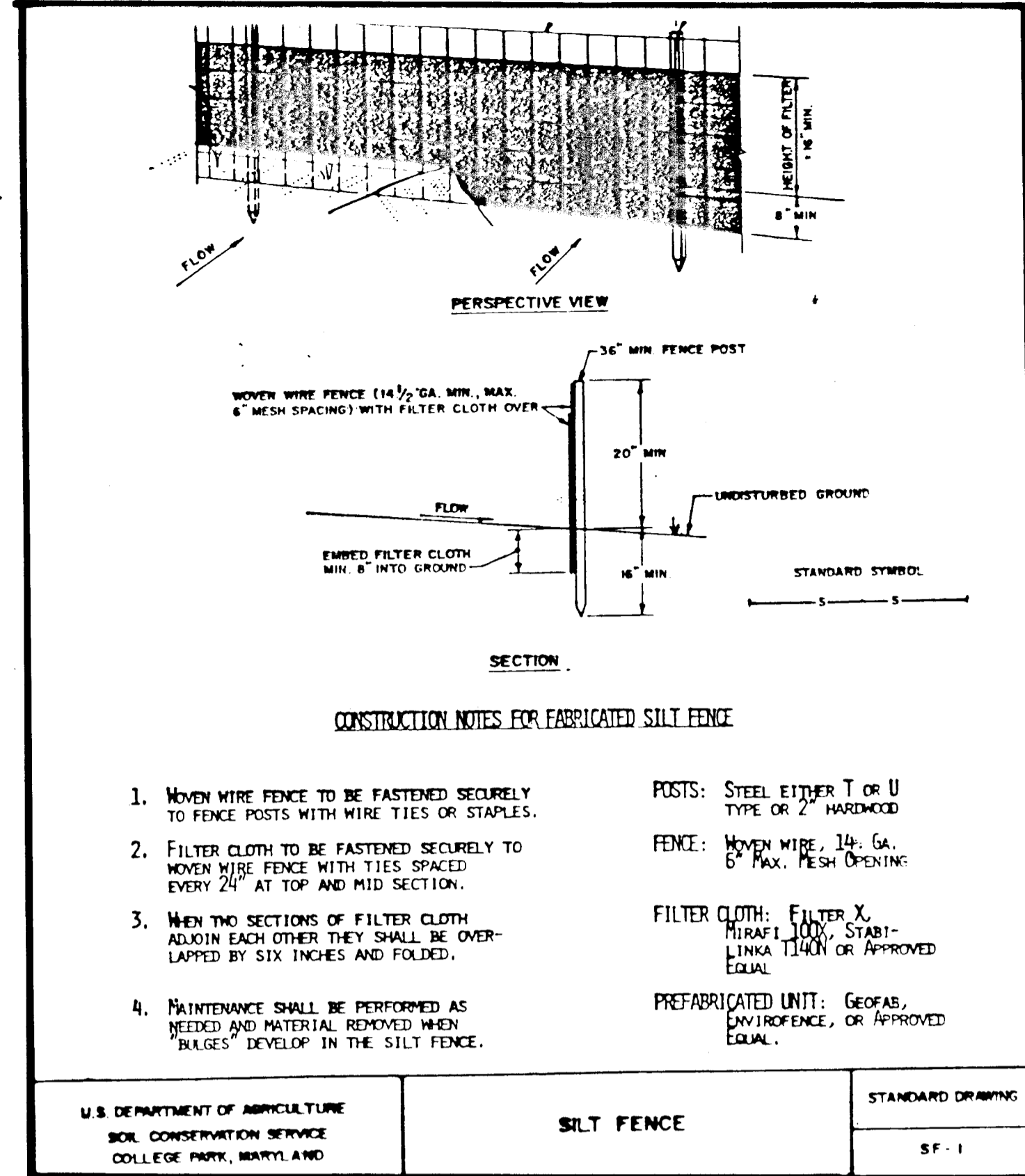
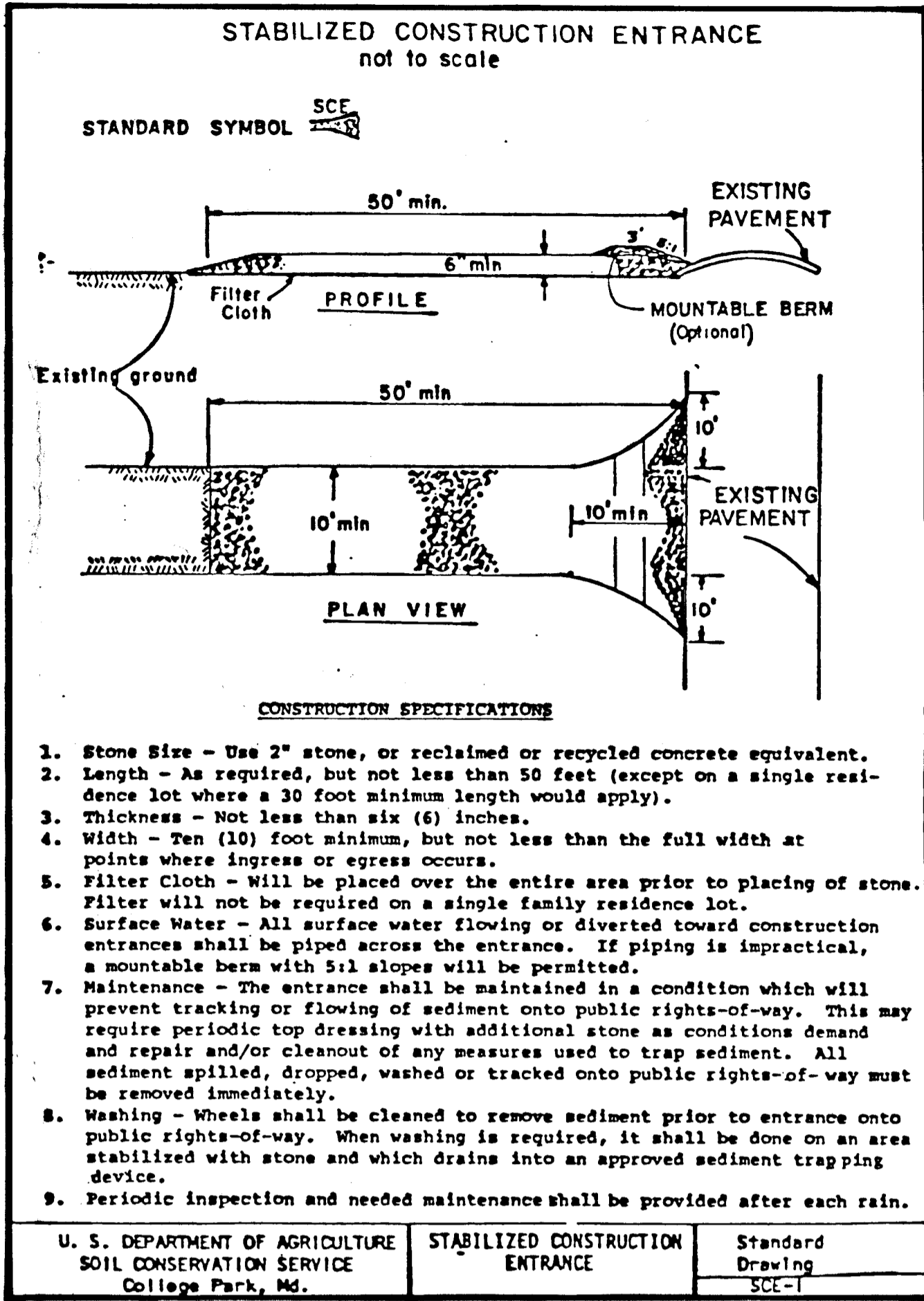
REVISED

**PAVING & STORM DRAIN
CONSTRUCTION PLANS
DRAINAGE AREA MAP**

Patton Harris Rust and Associates
 A Professional Corporation
 Engineers, Surveyors, Planners and Landscape Architects
 7609 Standish Place Rockville, Maryland 20855 (301)762-2220

BOWLING BROOK FARMS
 PARCEL - L
 LOTS L-1 THRU L-55
 A RESUBDIVISION OF LOT 71, BOWLING BROOK FARMS
 TAX MAP 47 PARCEL 141
 SIXTH ELECTION DISTRICT HOWARD COUNTY, MARYLAND

SURVEY	DATE
DESIGN K.O.R.	
DRAWN C.S.R.	SHEET
CHECKED	4 OF 6
SCALE: 1"=50'	FILE NO.
C.L.: 2'	2104-1-9



PERMANENT SEEDING NOTES

Apply to graded or cleared areas not subject to immediate further disturbance where a permanent long-lived vegetative cover is needed.

Seeding Preparation: Loosen upper three inches of soil by raking, disking or other acceptable means before seeding.

Soil Amendments: In lieu of soil test recommendations, use one of the following schedules:

- Preferred - Apply 2 tons per acre dolomitic limestone (92 lbs/1000 square ft) and 600 lbs per acre 10-10-10 fertilizer (14 lbs/1000 sq ft) before seeding. Harrow or disc into upper three inches of soil. At time of seeding, apply 400 lbs per acre 30-0-0 ureaform fertilizer (9 lbs/1000 sq ft).
- Acceptable - Apply 2 tons per acre dolomitic limestone (92 lbs/1000 sq ft) and 1000 lbs per acre 10-10-10 fertilizer (23 lbs/1000 sq ft) before seeding. Harrow or disc into upper three inches of soil.

Seeding - For the periods March 1 thru April 30, and August 1 thru October 15, seed with 60 lbs per acre (1.4 lbs/1000 sq ft) of Kentucky 31 Tall Fescue. For the period May 1 thru July 31, seed with 60 lbs Kentucky 31 Tall Fescue per acre and 2 lbs per acre (.05 lbs/1000 sq ft) of weeping lovegrass. During the period of October 16 thru February 28, protect site by: Option (1) 2 tons per acre of well anchored straw mulch and seed as soon as possible in the spring. Option (2) Use seed. Option (3) Seed with 60 lbs/acre Kentucky 31 Tall Fescue and mulch with 2 tons/acre well anchored straw.

Mulching - Apply 15 to 2 tons per acre (70 to 90 lbs/1000 sq ft) of untreated small grain straw immediately after seeding. Anchor mulch immediately after application using mulch anchoring tool or 218 gallons per acre (5 gal/1000 sq ft) of emulsified asphalt on flat areas. On slopes 8 feet or higher, use 348 gallons per acre (8 gal/1000 sq ft) for anchoring.

Maintenance - Inspect all seeded areas and make needed repairs, replacements and reseedings.

TEMPORARY SEEDING NOTES

Apply to graded or cleared areas likely to be redistributed where a short-term vegetative cover is needed.

Seeding Preparation: Loosen upper three inches of soil by raking, disking or other acceptable means before seeding.

Soil Amendments: Apply 60 lbs per acre 10-10-10 fertilizer (14 lbs/1000 sq ft).

Seeding - For periods March 1 thru April 30 and from August 15 thru November 15, seed with 24 bushel per acre of annual ryegrass (3.2 lbs/1000 sq ft). For the period May 1 thru August 14, seed with 3 lbs per acre of weeping lovegrass (.07 lbs/1000 sq ft). For the period November 16 thru February 28, protect site by applying 2 tons per acre of well anchored straw mulch and seed as soon as possible in the spring, or use seed.

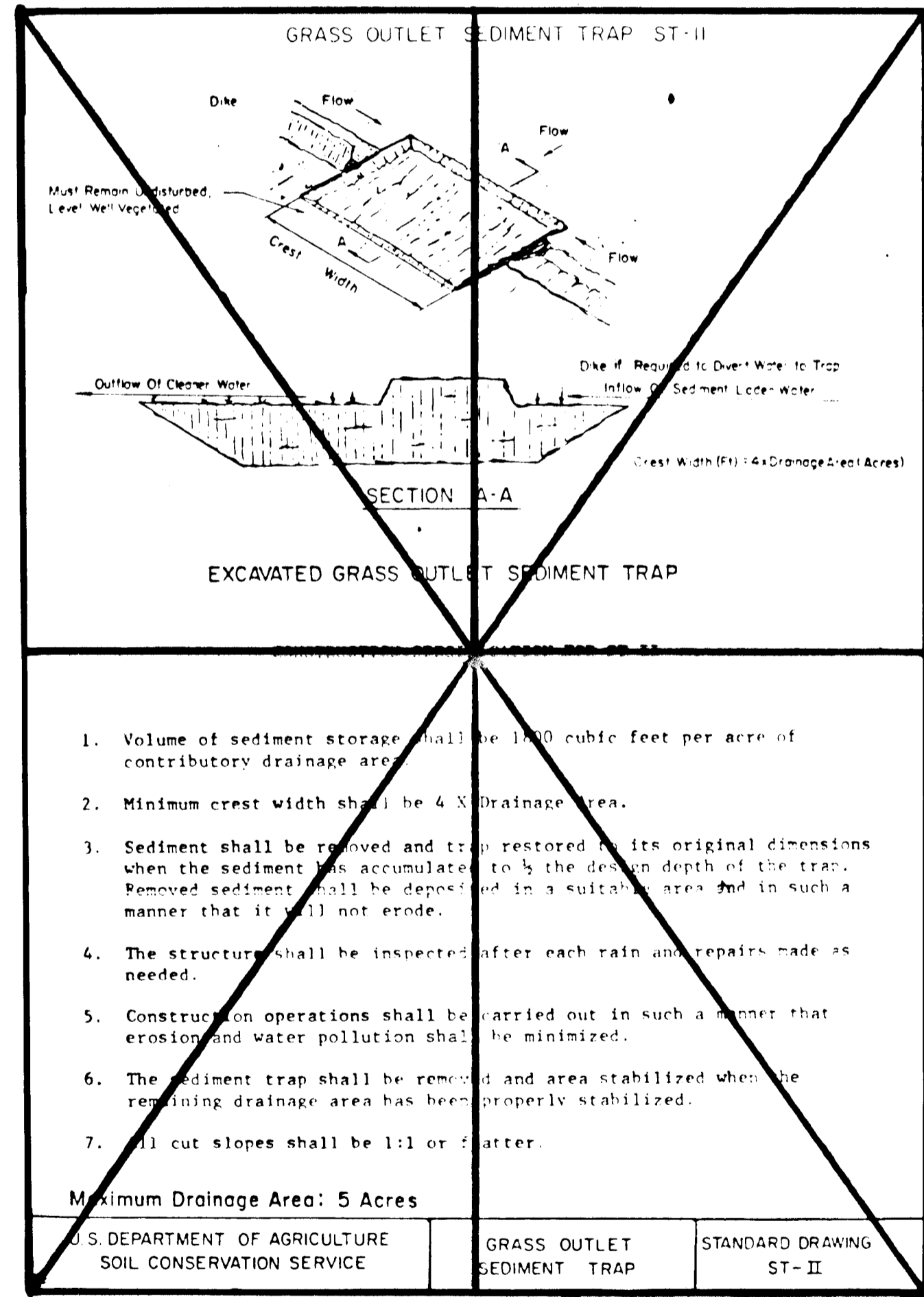
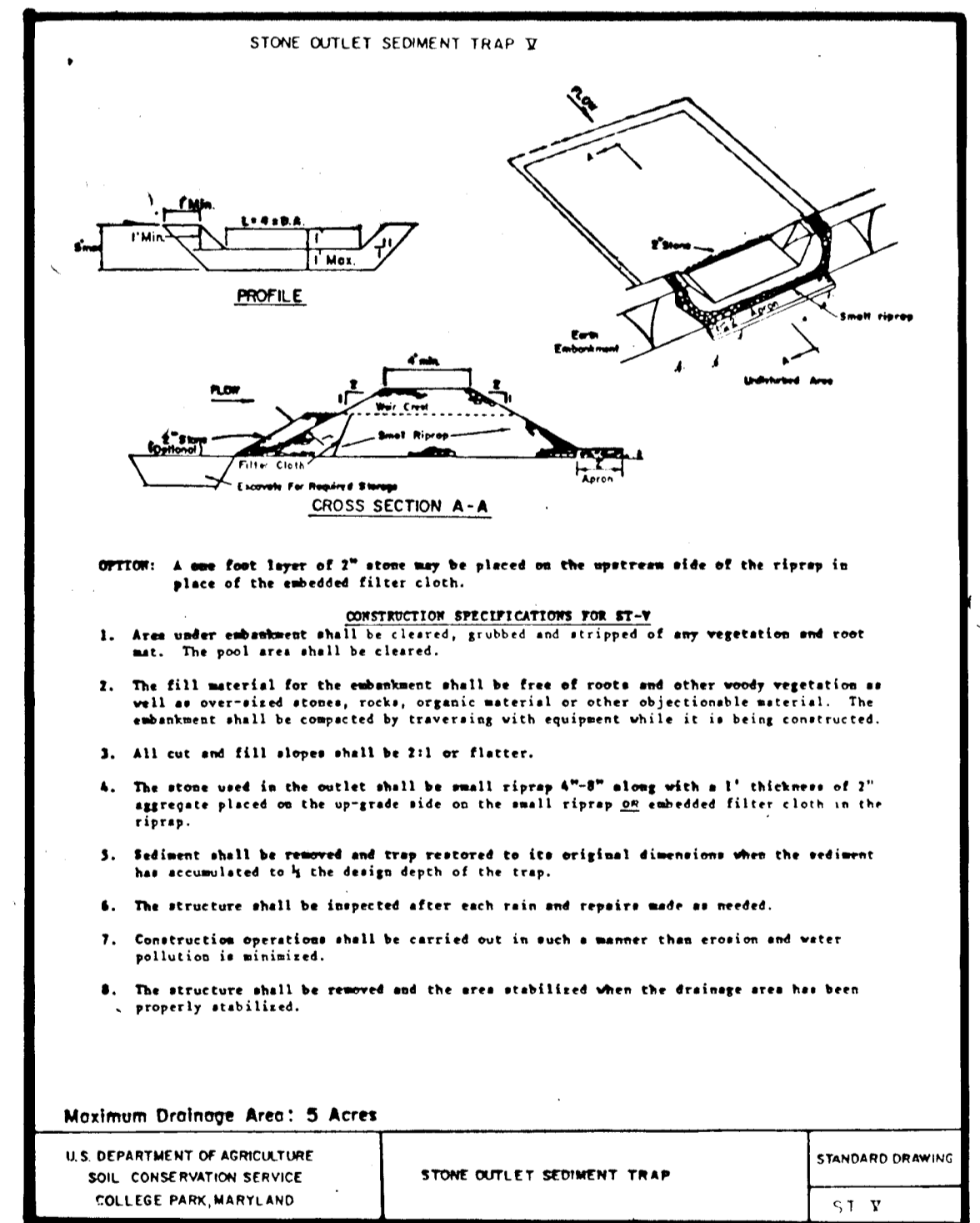
Mulching - Apply 15 to 2 tons per acre (70 to 90 lbs/1000 sq ft) of untreated small grain straw immediately after seeding. Anchor mulch immediately after application using mulch anchoring tool or 218 gal per acre (5 gal/1000 sq ft) of emulsified asphalt on flat areas. On slopes 8 ft or higher, use 348 gal per acre (8 gal/1000 sq ft) for anchoring.

Refer to the 1983 MARYLAND STANDARDS AND SPECIFICATIONS FOR SOIL EROSION AND SEDIMENT CONTROL for rate and methods not covered.

SEQUENCE OF CONSTRUCTION

- OBTAIN REVISED GRADING PERMIT
- MAINTAIN EXISTING SEDIMENT CONTROL MEASURES IN PLACE FROM ROUGH GRADING OPERATIONS, GP-88-72.
- CONSTRUCT SANITARY SEWER, WATER MAINS AND STORM DRAINS AS INDICATED ON PLANS.
- CONSTRUCT REMAINING UNDERGROUND UTILITIES, PAVE STREETS AND PARKING AREAS.
- APPLY TEMPORARY AND/OR PERMANENT VEGETATIVE STABILIZATION TO DISTURBED AREAS NOT SUBJECT TO IMMEDIATE CONSTRUCTION AS REQUIRED BY THE SEEDING NOTES ON THIS SHEET.
- AS THEIR CONTRIBUTING DRAINAGE AREAS ARE BROUGHT TO FINAL GRADE AND STABILIZED, REMOVE SEDIMENT CONTROL MEASURES AT THE DIRECTION OF THE SEDIMENT CONTROL INSPECTOR.

14.03



SEDIMENT TRAP SCHEDULE

SEDIMENT TRAP #	1	2	3
TYPE OF TRAP - STD B SPEC #	ST-II	ST-I	ST-I
DRAINAGE AREA (ACRES)	4.0	1.75	.41
STORAGE REQUIRED (FT ³)	7200	3,150	730
STORAGE PROVIDED (FT ³)	7200	3,300	800
BASE DIMENSIONS & ELEV.	SEE PLAN	SEE PLAN	6'x30' @ 2.67'
WEIR LENGTH & ELEV	18' @ 262.51'	10' @ 259.0	
STORAGE DEPTH	3'	3'	3'
EMBANKMENT HT & TOP ELEV	2' @ 263.5'	2' @ 260.0	
MAX DEPTH OF FLOW OVER WEIR			

DEVELOPER'S/BUILDER'S CERTIFICATE

I hereby certify that all development and construction will be done according to this plan of development and plan for erosion and sediment control and that all responsible personnel involved in the construction project will have a certificate of Attendance at a Department of Natural Resources Approved Training Program for the Control of Sediment and Erosion before beginning the project. I also authorize periodic onsite inspection by the Howard Soil Conservation District or their authorized agents, as are deemed necessary.

Kim T. von Paris
Kim T. von Paris
8/4/88
6/16/88

ENGINEER'S CERTIFICATE

I hereby certify that this plan for Erosion and Sediment Control represents a practical and workable plan based on my personal knowledge of the site conditions and that it was prepared in accordance with the requirements of the Howard Soil Conservation District.

Phil Span 8/4/88
Phil Span 6/16/88

THIS PLAN FOR STREET AND UTILITY CONSTRUCTION ONLY.

THESE PLANS HAVE BEEN REVIEWED FOR THE HOWARD SOIL CONSERVATION DISTRICT AND MEET TECHNICAL REQUIREMENTS.

James McHolm 8/11/88
U.S. Soil Conservation Service Date

THIS PLAN IS APPROVED FOR SOIL EROSION AND SEDIMENT CONTROL BY THE HOWARD SOIL CONSERVATION DISTRICT.

APPROVED *Stephen R. Hall* 8-11-88
Howard SCD Date

PLAN NUMBER _____

APPROVED: HOWARD COUNTY OFFICE OF PLANNING AND ZONING

Debra S. DeLanghe 8-1-88
Chief, Division of Community Planning & Land Development Date

APPROVED: HOWARD COUNTY DEPARTMENT OF PUBLIC WORKS

James W. Johnson 8/25/88
Chief, Land Development Division Date

Lawrence W. Weverud 8/24/88
Chief, Bureau of Highways Date

William R. Rye 8-25-88
Chief, Bureau of Engineering Date

REVISION APPROVED BY

NO.	DESCRIPTION	DATE	APPROVED	DATE
3	ORIGINALS ISSUED TO A.D.C.	8/4/88		
2	REV. PER HSCD COMMENTS	7-21-88		
1	ISSUED FOR REVIEW	6/16/88		

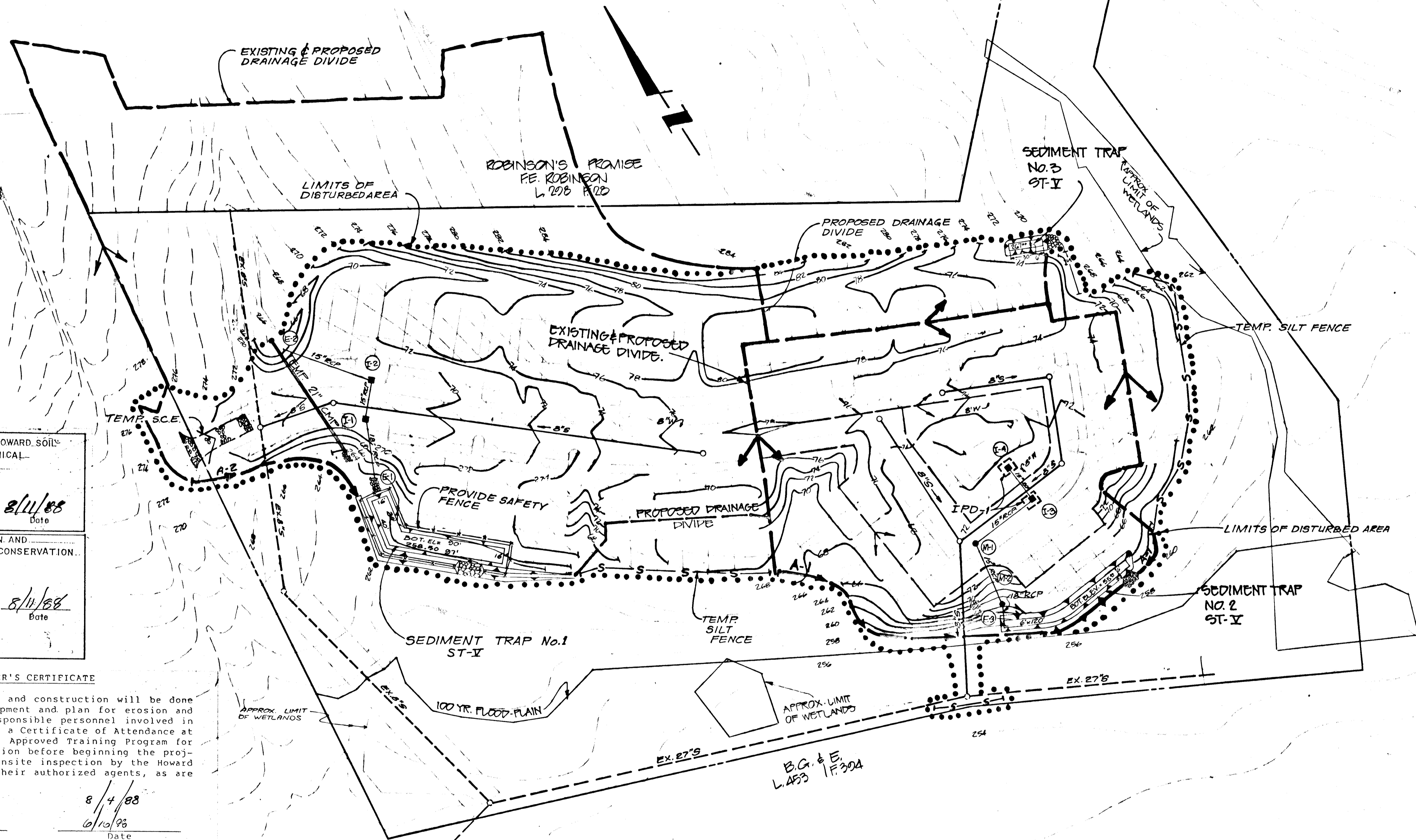
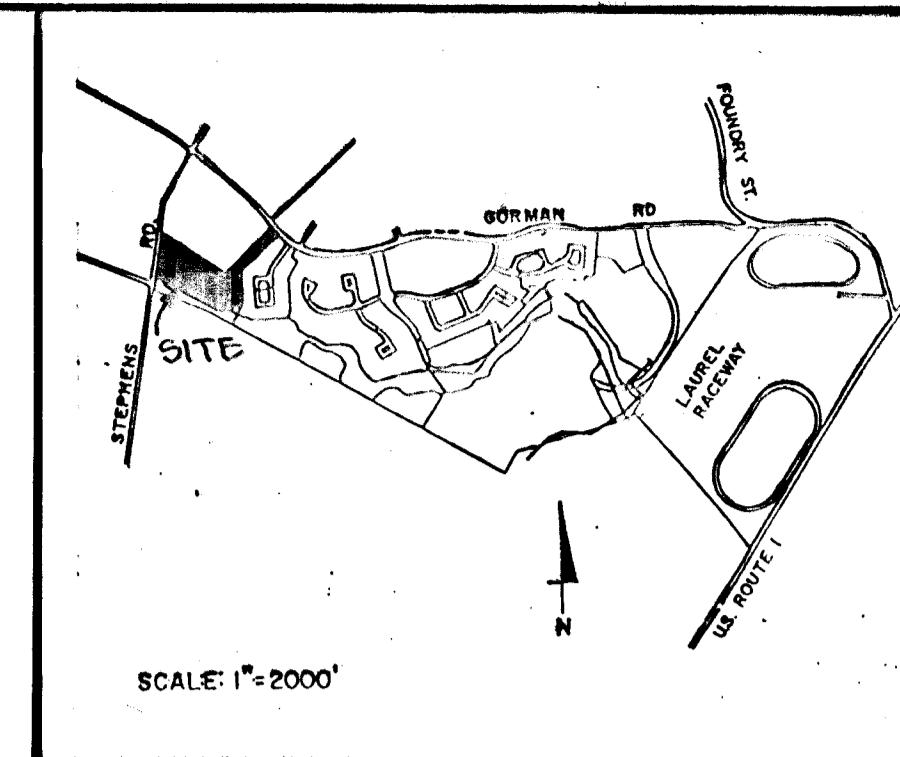
PROFESSIONAL SEAL

REVISED PAVING & STORM DRAIN CONSTRUCTION PLANS
EROSION & SEDIMENT CONTROL PLAN

Patton Harris Rust and Associates
A Professional Corporation
Engineers, Surveyors, Planners and Landscape Architects
7609 Standish Place Rockville, Maryland 20855 (301)762-2220

BOWLING BROOK FARMS
PARCEL - L
LOTS L-1 THRU L-55
A RESUBDIVISION OF LOT 71, BOWLING BROOK FARMS
TAX MAP 47 PARCEL 141
SIXTH ELECTION DISTRICT HOWARD COUNTY, MARYLAND

SURVEY _____ DATE _____
DESIGN K.O.R.
DRAWN CSR SHEET 5 of 6
CHECKED K.O.R.
SCALE C.I. FILE NO. 2184-1-9



THESE PLANS HAVE BEEN REVIEWED FOR THE HOWARD SOIL CONSERVATION DISTRICT AND MEET TECHNICAL REQUIREMENTS.

James M. Helm 8/11/88
 U.S. Soil Conservation Service Date

THIS PLAN IS APPROVED FOR SOIL EROSION AND SEDIMENT CONTROL BY THE HOWARD SOIL CONSERVATION DISTRICT.

APPROVED *Stephen L. Fisher* 8/11/88
 Howard S.C.D. Date

PLAN NUMBER

DEVELOPER'S/BUILDER'S CERTIFICATE

I/We certify that all development and construction will be done according to this plan of development and plan for erosion and sediment control and that all responsible personnel involved in the construction project will have a Certificate of Attendance at a Department of Natural Resources Approved Training Program for the Control of Sediment and Erosion before beginning the project. I also authorize periodic onsite inspection by the Howard Soil Conservation District or their authorized agents, as are deemed necessary.

Ken T. von Pavia 8/4/88
 Signature of Developer/Builder Date

ENGINEER'S CERTIFICATE

I hereby certify that this plan for Erosion and Sediment Control represents a practical and workable plan based on my personal knowledge of the site conditions and that it was prepared in accordance with the requirements of the Howard Soil Conservation District.

Patton Harris Rust 8/16/88
 Signature of Engineer Date

THIS PLAN FOR STREET AND UTILITY CONSTRUCTION ONLY.

APPROVED: HOWARD COUNTY DEPARTMENT OF PUBLIC WORKS
James M. Helm 8/22/88
 Chief, Land Development Division Date
Barbara W. Hancock 8/22/88
 Chief, Bureau of Highways Date
William E. ... 8-25-88
 Chief, Bureau of Engineering Date

APPROVED: HOWARD COUNTY OFFICE OF PLANNING AND ZONING
Barbara S. ... 8-1-88
 Chief, Division of Community Planning & Land Development Date

NO.	DESCRIPTION	DATE	APPROVED	DATE
3	ORIGINALS ISSUED TO A.C.D.	8/11/88		
2	REVISED PER HSCD COMMENTS	7/11/88		
1	ISSUED FOR REVIEW	6/16/88		



REVISED
**PAVING & STORM DRAIN CONSTRUCTION PLANS
 EROSION & SEDIMENT
 CONTROL PLAN**

Patton Harris Rust and Associates
 A Professional Corporation
 Engineers, Surveyors, Planners and Landscape Architects
 7609 Standish Place Rockville, Maryland 20855 (301)762-2220

BOWLING BROOK FARMS
 PARCEL - L
 LOTS L-1 THRU L-55
 A RESUBDIVISION OF LOT 71, BOWLING BROOK FARMS
 TAX MAP 47 PARCEL .141
 SIXTH ELECTION DISTRICT HOWARD COUNTY, MARYLAND

SURVEY	DATE
DESIGN K.O.R.	
DRAWN C.S.R.	SHEET
CHECKED K.O.R.	6 OF 6
SCALE: 1"=50'	FILE NO.
C.I.: 2'	2164-1-9