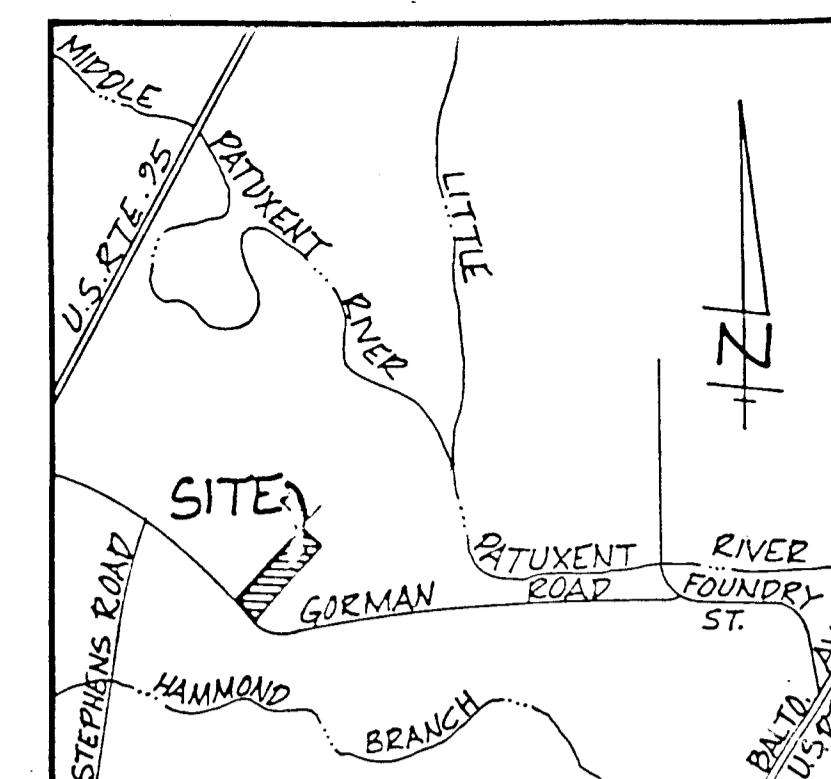


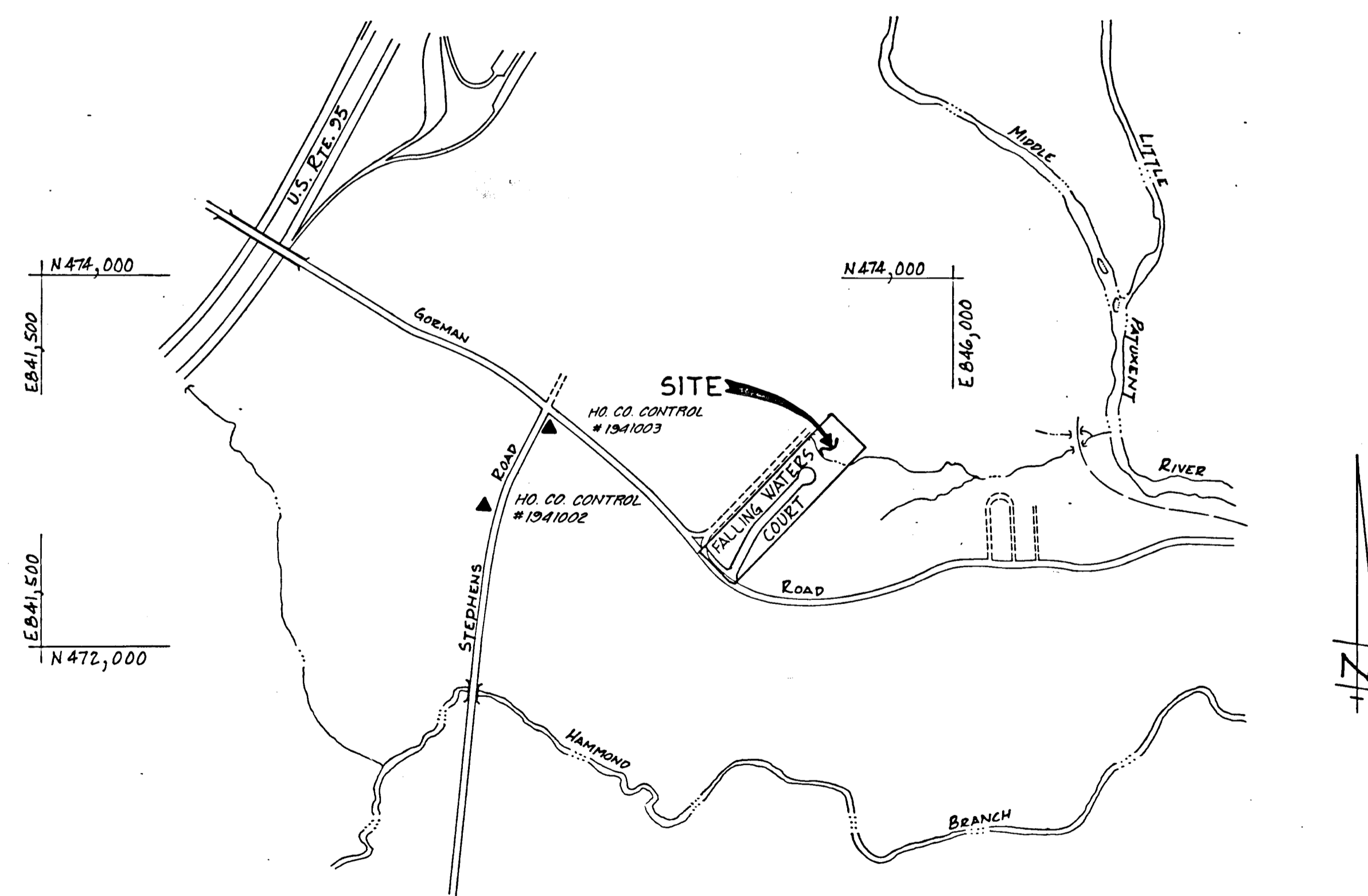
FALLING WATERS COURT DEPARTMENT OF PUBLIC WORKS 6th ELECTION DISTRICT HOWARD COUNTY, MARYLAND

GENERAL NOTES

1. All work shall be performed in accordance with the Howard County Design Volume IV, "Standard Details and Specifications for Construction."
2. Approximate location of existing utilities are shown. The contractor shall take all necessary precautions to protect the existing utilities and maintain uninterrupted service. Any damage incurred due to contractor's operation shall be repaired immediately at the contractor's expense.
3. The contractor shall test pit existing utilities, where directed by the engineer, a minimum of two weeks in advance of construction operations.
4. Contractor to notify "Miss Utility" phone (1) 539-0100 at least three (3) days before starting work shown on this/these drawing(s).
5. Installation of traffic control devices, marking and signing shall be in accordance with the Manual of Uniform Traffic Control Devices 1978 OR LATEST REVISION.
6. Designed traffic speed in accordance with the Howard County Design Manual Volume III Standards. 30 MPH.
7. All elevations shown are based on U.S.C. and G.S. mean sea level datum 1929.
8. All coordinates based on Maryland state grid system.
9. Pipe shall not be installed by the contractor until the length called for at each station has been approved by the engineer in the field.
10. Contractor to restore all existing paving, sidewalks or lawns affected by the construction shown hereon to a condition comparable to that existing prior to construction.
12. All storm drain bedding to be class C except where otherwise noted.



VICINITY MAP
SCALE: 1"=2000'



FALLING WATERS
LOCATION PLAN
SCALE: 1"=600'

INDEX OF SHEETS	
NO.	
1	TITLE SHEET
2	FALLING WATERS COURT ROAD - PLAN & PROFILE
3	GORMAN ROAD - PLAN & PROFILE
4	ROADWAY SECTIONS
5	DRAINAGE AREA MAPS
6	STORM DRAIN - PLAN & PROFILE
7	STORM WATER MANAGEMENT POND
8	SEDIMENT CONTROL PLAN
9	SEDIMENT CONTROL DETAILS

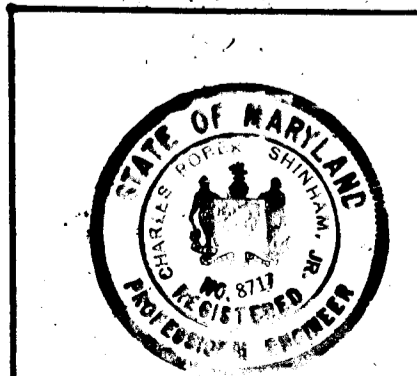
HORIZONTAL & VERTICAL CONTROL USED:
(1) HO. CO. CONTROL #1941003
(2) HO. CO. CONTROL #1941002

DEPARTMENT OF PLANNING AND ZONING	
<i>James S. DeLangh</i> CHIEF, DIVISION OF COMMUNITY PLANNING AND LAND DEVELOPMENT	8-25-88 DATE
DEPARTMENT OF PUBLIC WORKS: HOWARD COUNTY, MARYLAND	
<i>Paul Johnson</i> CHIEF, LAND DEVELOPMENT DIVISION	8/12/88 DATE
<i>William S. Ray</i> CHIEF, BUREAU OF ENGINEERING	8/22/88 DATE
<i>Francis W. Villand</i> CHIEF, BUREAU OF HIGHWAYS	8/22/88 DATE

Date	No	Revision Description
OWNER AND DEVELOPER THE ARUNDEL CORPORATION 110 WEST RD. TOWSON, MD. 21204 301-296-6400		

AREA	FALLING WATERS PARCELS 82 B 83 TAX MAP 47 6TH ELECTION DISTRICT HOWARD CO., MD.
------	---

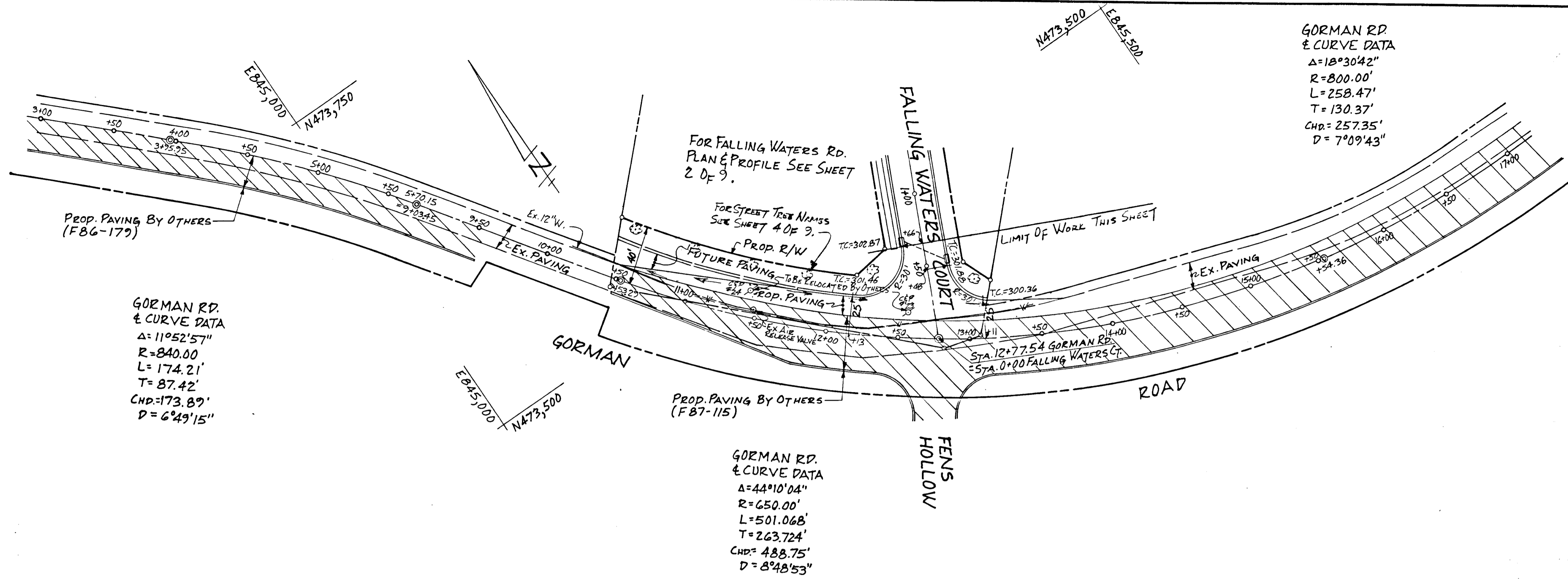
TITLE	TITLE SHEET
	THE ARUNDEL CORPORATION ARUNDEL CORPORATE CENTER, SUITE 100 110 WEST RD. TOWSON, MD. 21204 (301) 296-6400 LAND PLANNERS, LAND SURVEYORS, CIVIL ENGINEERS



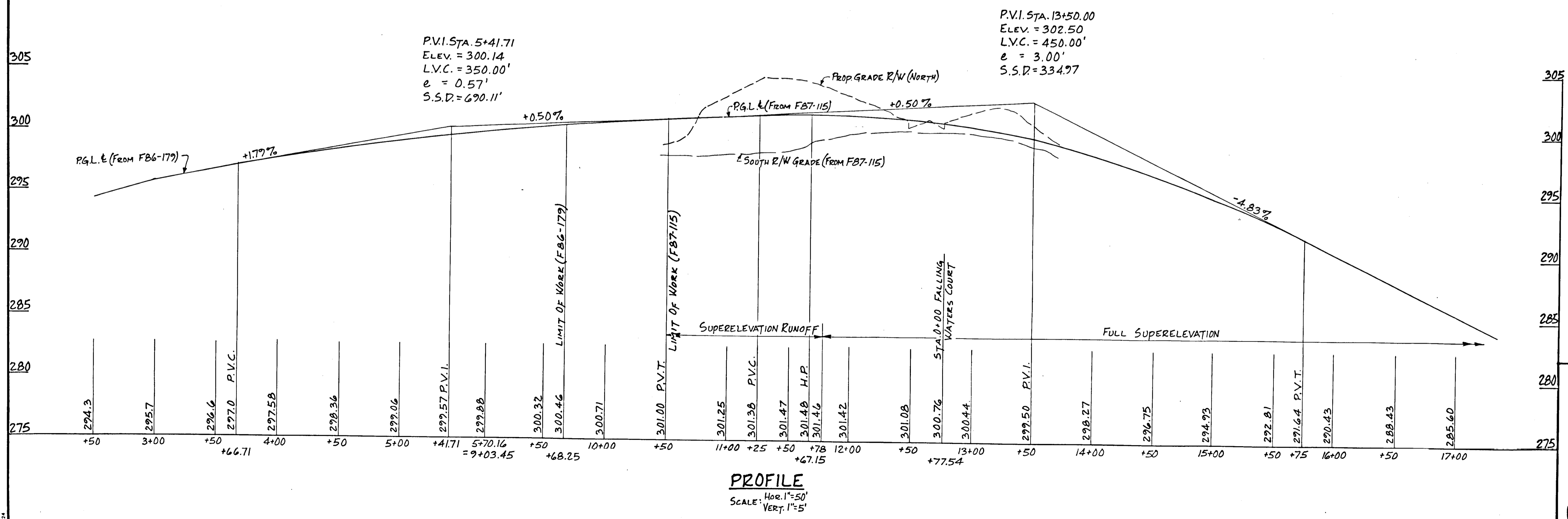
AS-BUILT
1-31-92

SCALE: As Shown	DRAWN: M.F.Y.	DESIGNED: C.R.S.
DATE: 2-11-88	CHECKED: C.R.S.	APPROVED: P.P.S.

AS-BUILT
1-31-92



PLAN
SCALE: 1"=50'



PROFILE
SCALE: Hor. 1"=50'
VERT. 1"=5'

DEPARTMENT OF PLANNING AND ZONING

David S. McLaughlin 8-25-88
CHIEF, DIVISION OF COMMUNITY PLANNING AND LAND DEVELOPMENT DATE

DEPARTMENT OF PUBLIC WORKS: HOWARD COUNTY, MARYLAND

Paul W. Gorman 8/12/88
CHIEF, BUREAU OF ENGINEERING DATE

Brantley W. Welleand 8/22/88
CHIEF, BUREAU OF HIGHWAYS DATE

Date	No	Revision Description

OWNER AND DEVELOPER
THE ARUNDEL CORPORATION
110 WEST RD.
TOWSON, MD. 21204
301-296-6400

AREA
FALLING WATERS
PARCELS 82 B 83 TAX MAP 47
6TH ELECTION DISTRICT HOWARD CO., MD.

TITLE
ROADWAY
PLAN AND PROFILE

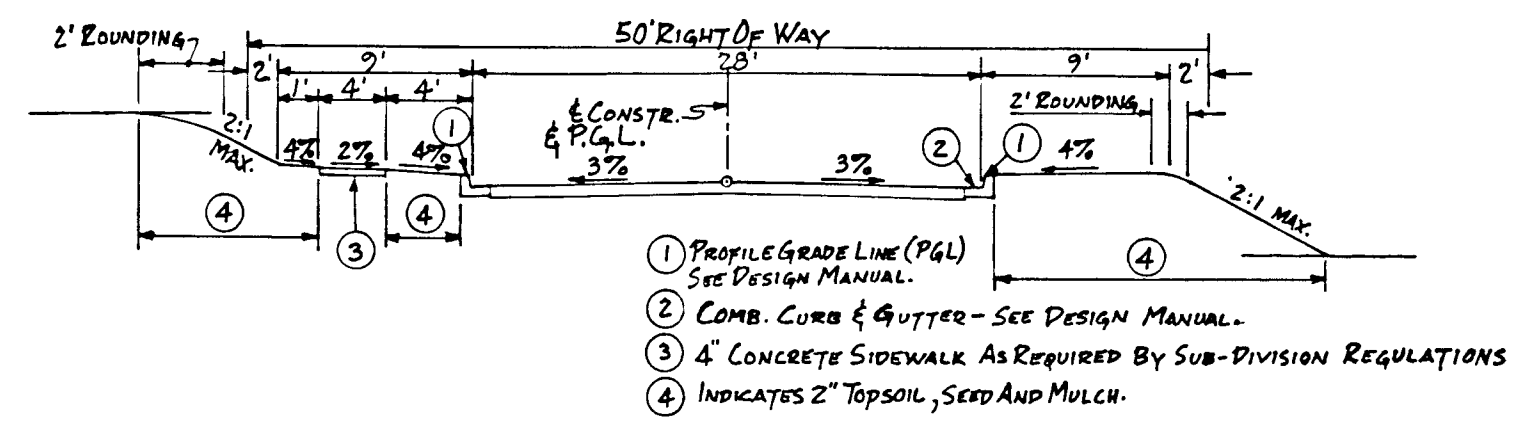
THE ARUNDEL CORPORATION
ARUNDEL CORPORATE CENTER, SUITE 100
110 WEST RD. TOWSON, MD. 21204
(301) 296-6400
LAND PLANNERS, LAND SURVEYORS, CIVIL ENGINEERS

SCALE: AS SHOWN
DATE: 3-11-88
DESIGNED: C.R.S.
DRAWN: M.T.V.
CHECKED: C.R.S.
APPROVED: P.P.S.

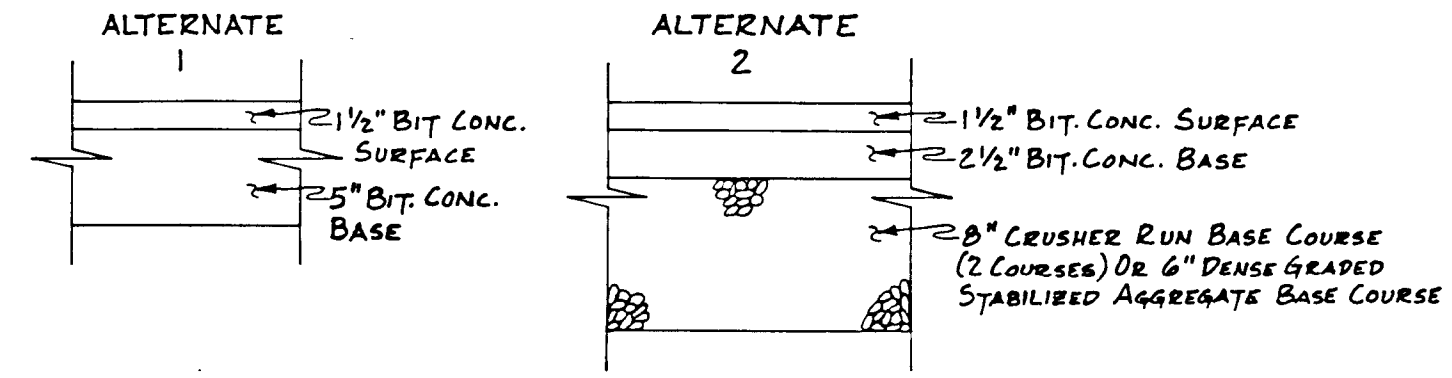
C. Robert Shick

STATE OF MARYLAND
REGISTERED PROFESSIONAL ENGINEER

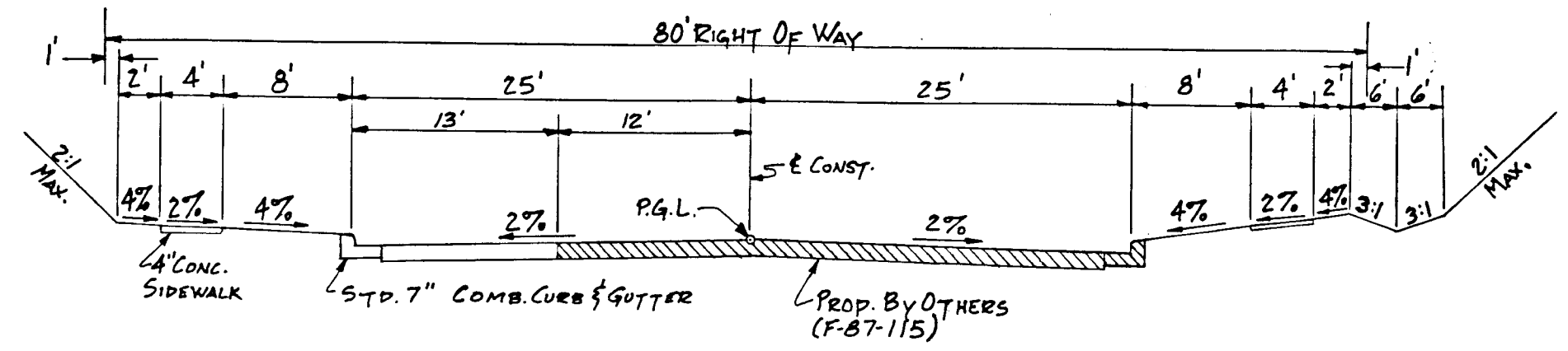
SHIET 3 OF 9



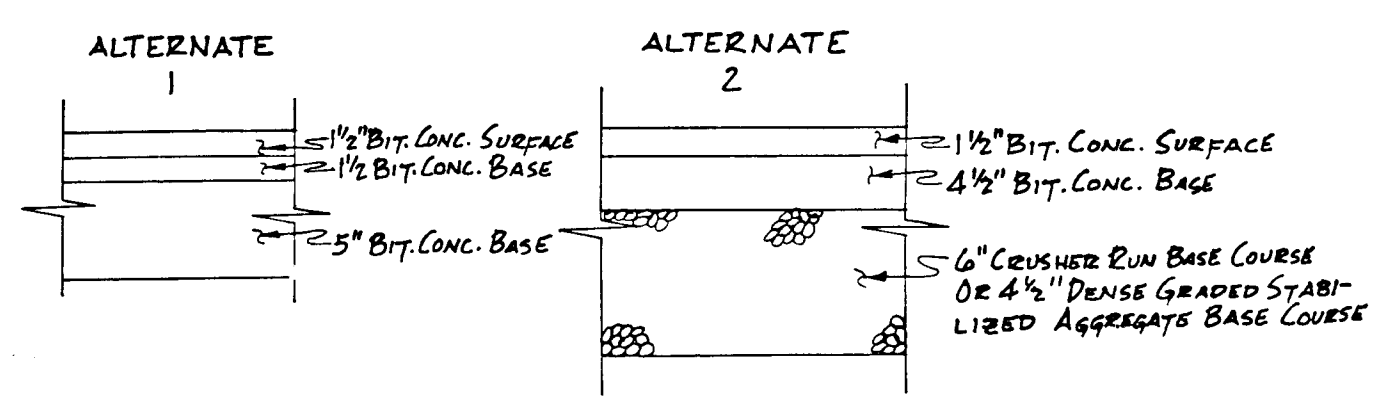
TYPICAL SECTION-FALLING WATERS CT.
 NOT TO SCALE
 (STA. 0+66 TO STA. 6+67.30)



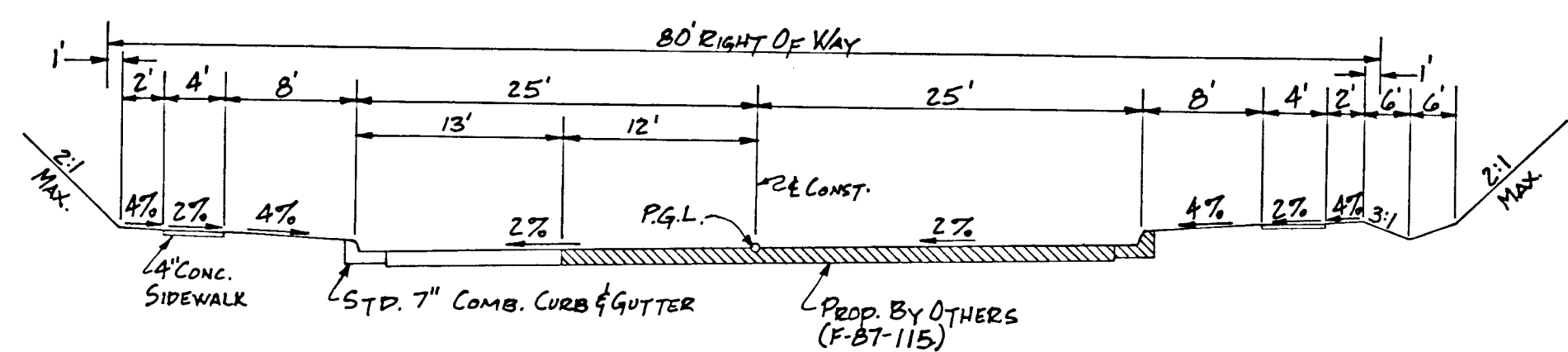
PAVING SECTION
 NOT TO SCALE
 (FALLING WATERS COURT)



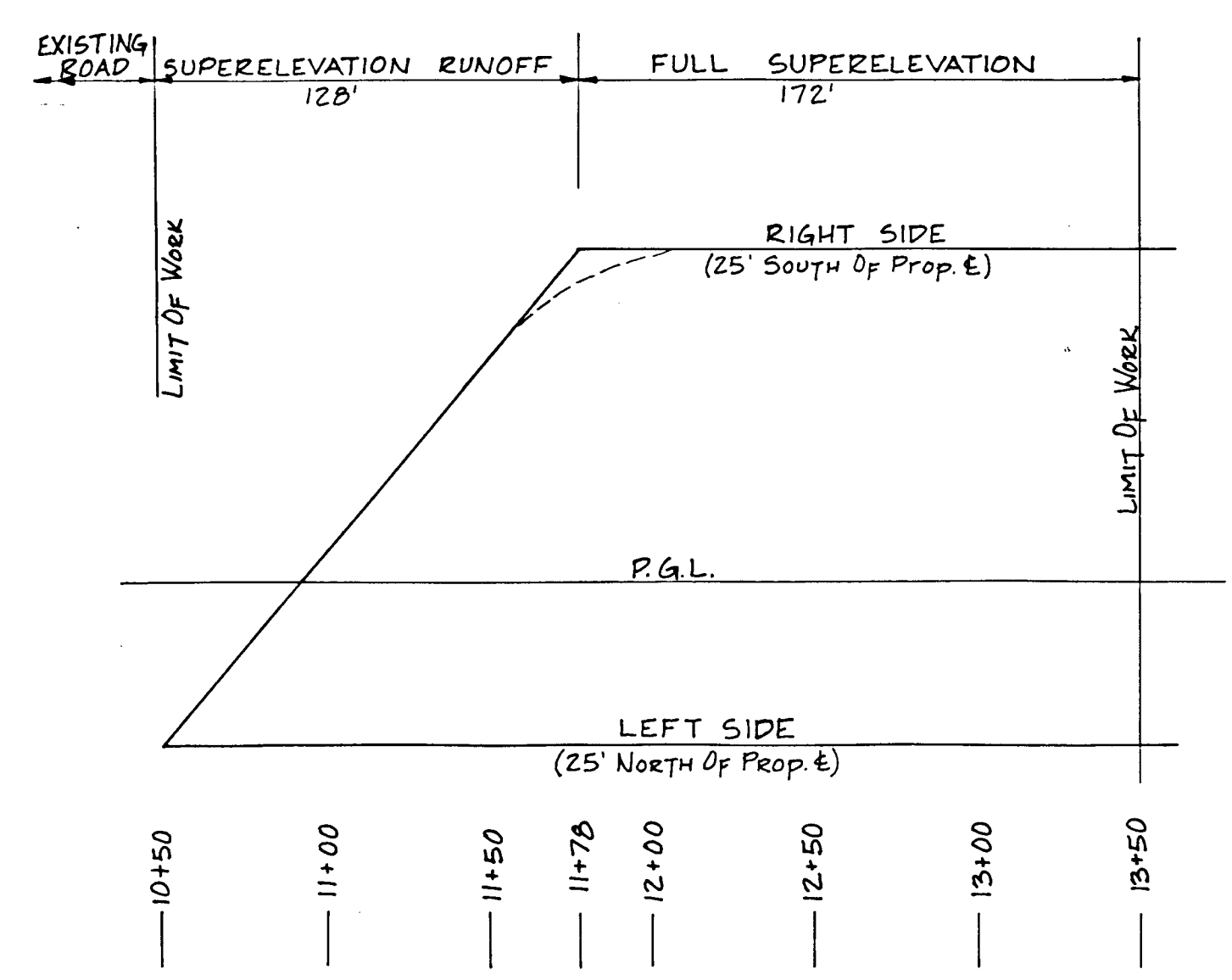
NORMAL SECTION-GORMAN ROAD
 NOT TO SCALE
 (STA. 9+03.45 TO STA. 10+50)



PAVING SECTION
 NOT TO SCALE
 (GORMAN ROAD)



SUPERELEVATION SECTION-GORMAN ROAD
 NOT TO SCALE
 (STA. 11+78 TO STA. 17+75)



SUPERELEVATION ATTAINMENT DIAGRAM
 NOT TO SCALE

STREET TREES

PLANT 42 STREET TREES AS LOCATED ON PLAN. TREES SHALL HAVE A MINIMUM TRUNK DIAMETER OF 2 1/2" MEASURED AT ONE FOOT ABOVE GROUND LEVEL. ACCEPTABLE VARIETIES ARE:

BOTANICAL NAME	COMMON NAME
ACER RUBRUM	RED MAPLE
FAGUS GRANDIFLORA	AMERICAN BEECH
LIQUIDAMBER STYRACIFLUA	SWEET GUM
QUERCUS ACUTISSIMA	SAWTOOTH OAK
QUERCUS PALUSTRIS	PIN OAK
QUERCUS RUBRA	N. RED OAK

NO MORE THAN 25 OF ANY ONE VARIETY MAY BE PLANTED.

DEPARTMENT OF PLANNING AND ZONING

Joseph J. Langh 1-20-88
 CHIEF, DIVISION OF COMMUNITY PLANNING AND LAND DEVELOPMENT DATE

DEPARTMENT OF PUBLIC WORKS: HOWARD COUNTY, MARYLAND

Franklin S. Brown 3/16/88
 CHIEF, LAND DEVELOPMENT DIVISION DATE

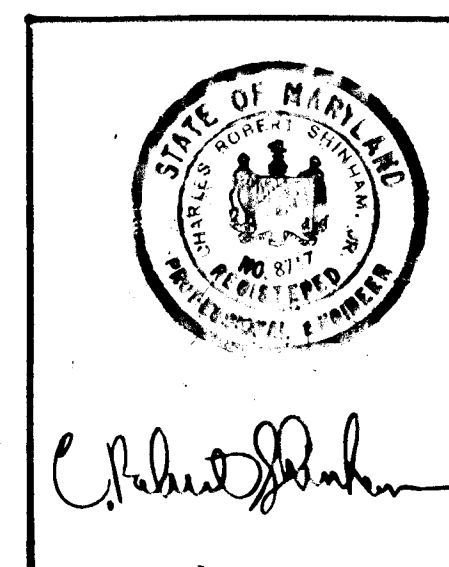
William B. Ryan 3-22-88
 CHIEF, BUREAU OF ENGINEERING DATE

Shawna W. Howard 4-27-88
 CHIEF, BUREAU OF HIGHWAYS DATE

Date	No	Revision Description

OWNER AND DEVELOPER
 THE ARUNDEL CORPORATION
 110 WEST RD.
 TOWSON, MD. 21204
 301-296-6400

AREA
 FALLING WATERS
 PARCELS 82 & 83 TAX MAP 47
 6TH ELECTION DISTRICT HOWARD CO., MD.



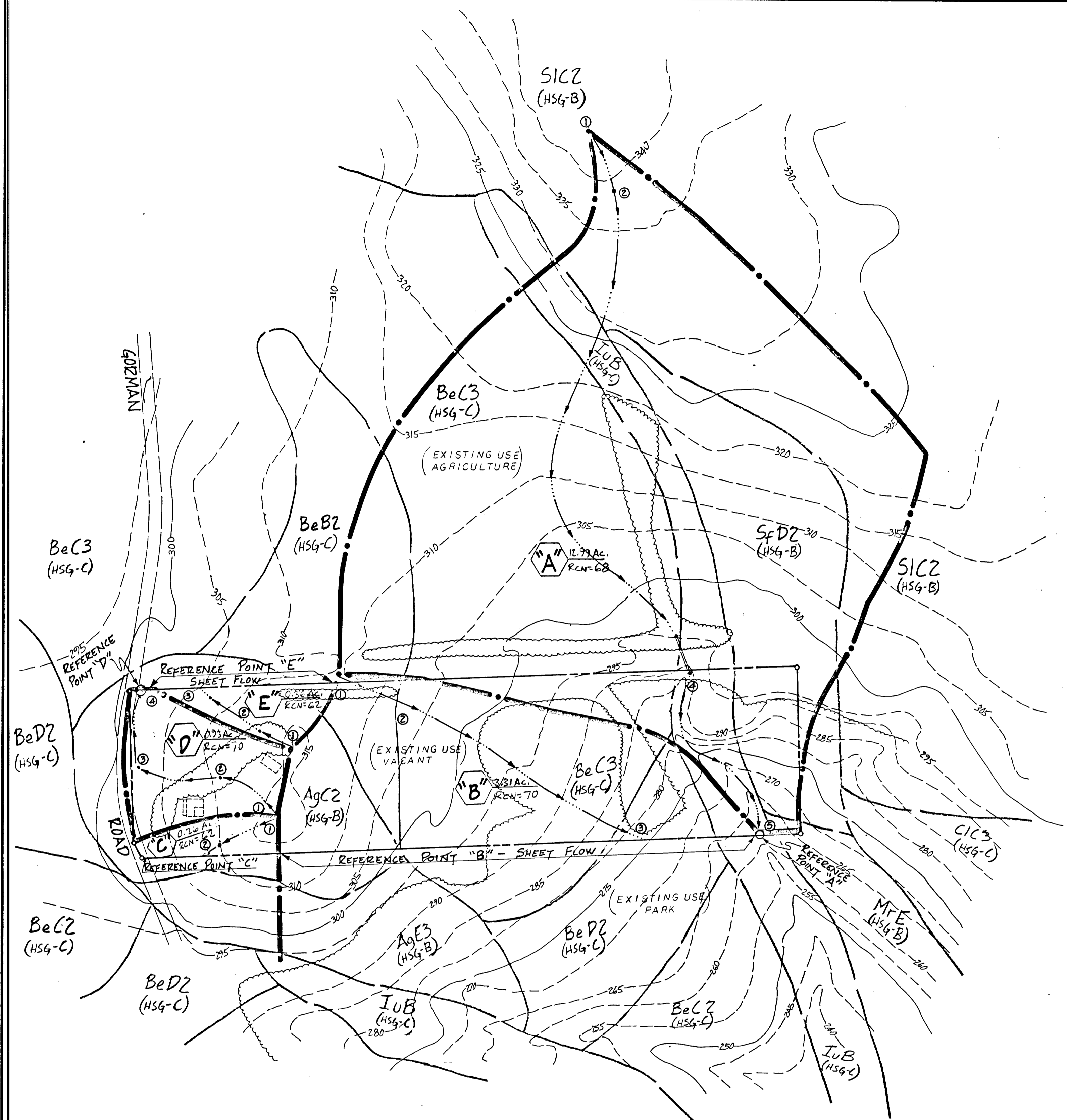
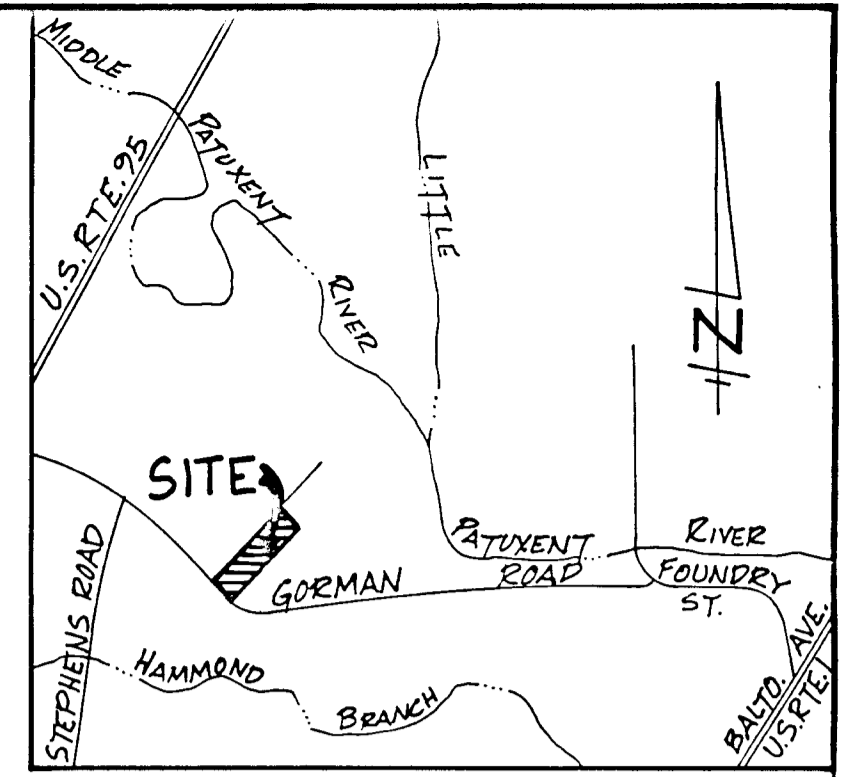
TITLE
ROADWAY SECTIONS

THE ARUNDEL CORPORATION
 ARUNDEL CORPORATE CENTER, SUITE 100
 110 WEST RD. TOWSON, MD. 21204
 (301) 296-6400
 LAND PLANNERS, LAND SURVEYORS, CIVIL ENGINEERS

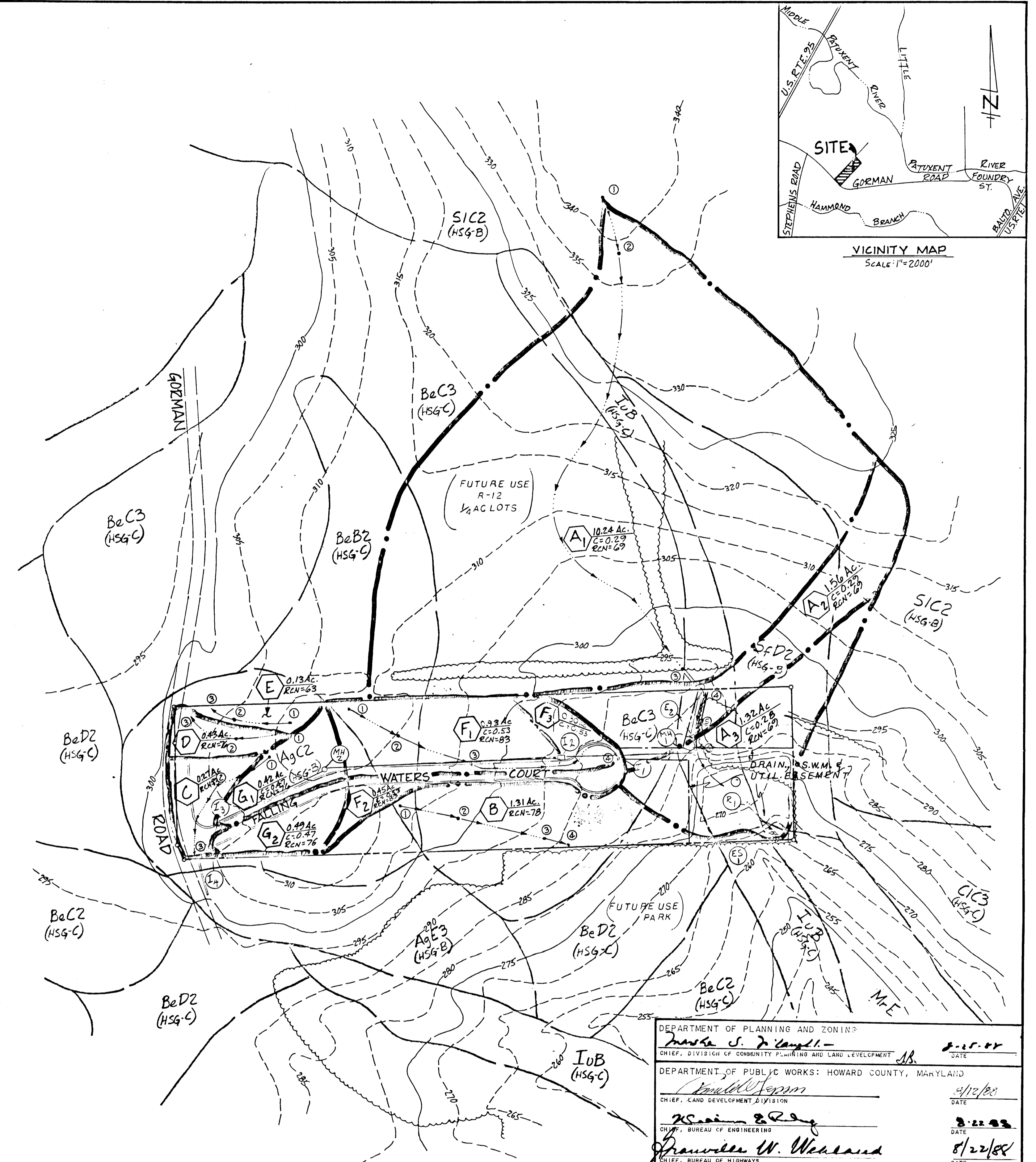
SCALE: NOT TO SCALE
 DATE: 3-11-88

DESIGNED: CBS
 DRAWN: MTY
 CHECKED: CBS
 APPROVED: CBS

SHEET 4 OF 9



EXISTING



PROPOSED

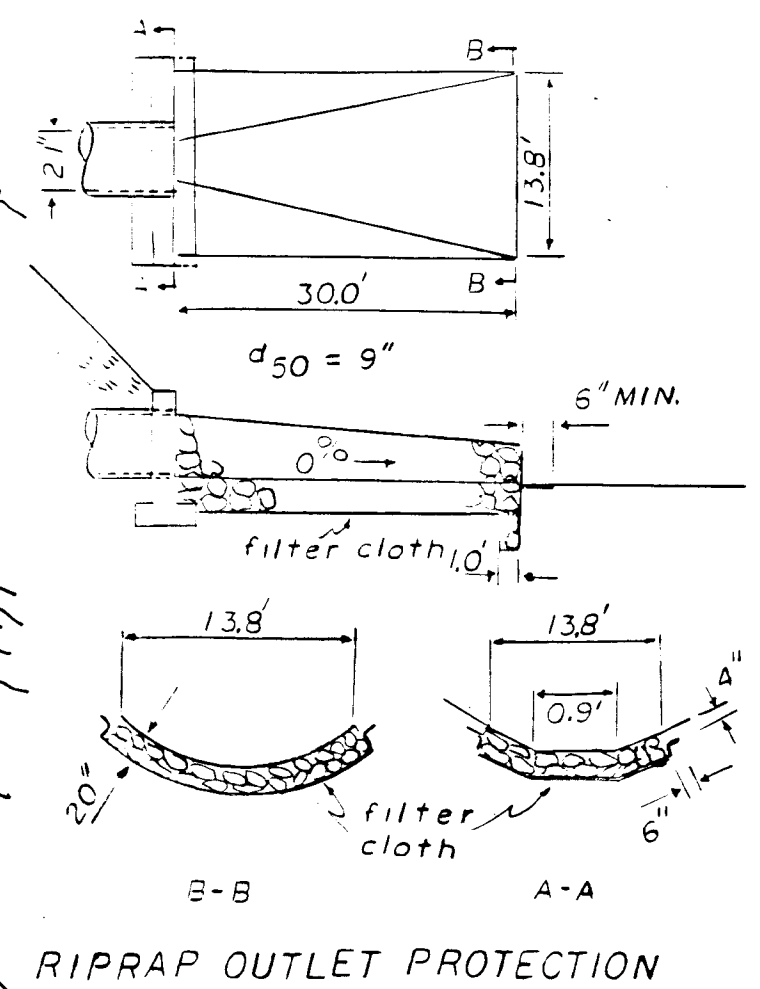
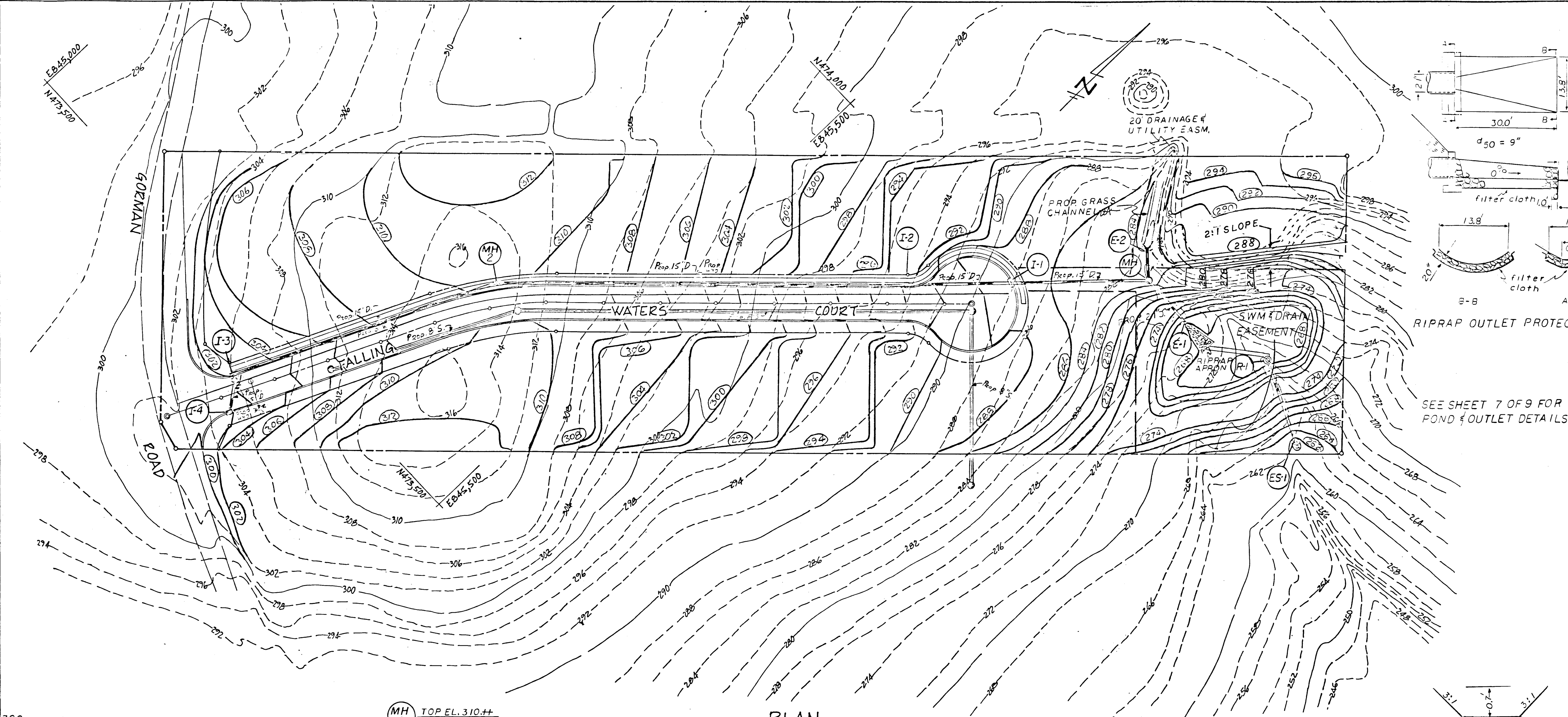
DEPARTMENT OF PLANNING AND ZONING <i>Maria S. Campbell</i> CHIEF, DIVISION OF COMMUNITY PLANNING AND LAND DEVELOPMENT	DATE 2-15-88
DEPARTMENT OF PUBLIC WORKS: HOWARD COUNTY, MARYLAND <i>Donald W. Sporn</i> CHIEF, LAND DEVELOPMENT DIVISION	DATE 4/12/88
<i>William R. Day</i> CHIEF, BUREAU OF ENGINEERING	DATE 3-21-88
<i>Franklin W. Weiland</i> CHIEF, BUREAU OF HIGHWAYS	DATE 8/22/88

FALLING WATERS
DRAINAGE AREA MAPS
ELECTION DIST. 6 HOWARD CO., MD.
Tax Map No. 47, Parcels 82 & 83

THE ARUNDEL CORPORATION
ARUNDEL CORPORATE CENTER, SUITE 100
110 WEST RD. TOWSON, MD. 21204
(301) 296-6400
LAND PLANNERS, LAND SURVEYORS, CIVIL ENGINEERS

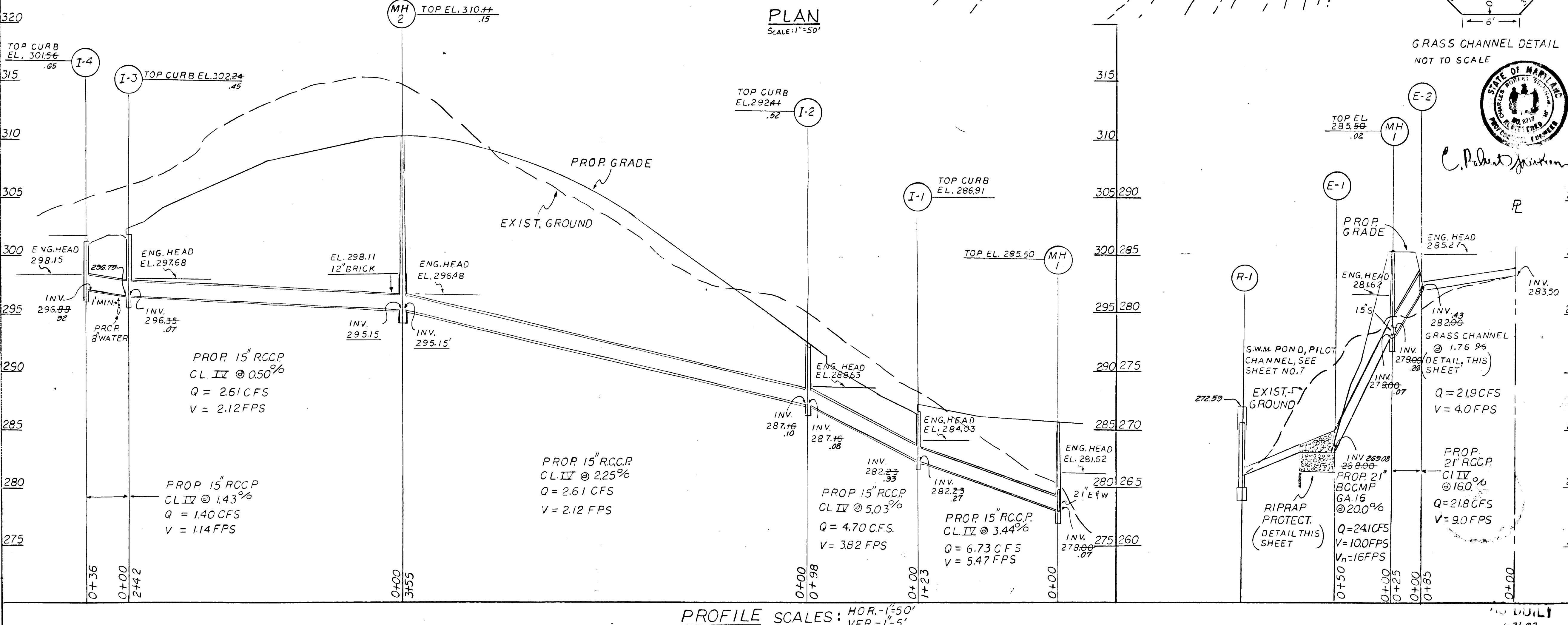


SCALE: 1"=100'	DESIGNED: C.R.S.	SHEET 5 OF 9
DATE: 3-11-88	DRAWN: M.T.Y.	
	CHECKED: C.R.S.	
	APPROVED: D.P.S.	



STRUCTURE SCHEDULE			
NO.	TYPE	LOCATION	REMARKS
E-1	BCCM END SECTION	N 474 096 E 845,841	HQ. CO. STD. SD 5 61
E-2	RCC END SECTION	N 474,105 E 845 772	HQ. CO. STD. SD 5.51 OR 5.52
I-1	A-5 INLET	@LIN PROF STA. 1+43.61	HQ CO STDS. SD 4.01 & 4.81
I-2	A-5 INLET	14' LT. @ STA. 6+62	HQ. CO. STDS. SD 4 01 & 4.83
I-3	A-5 INLET	14' LT. @ STA. 0+69	"
I-4	A-5 INLET	14' RT. @ STA. 0+52	"
MH-1	MANHOLE	N 474,088 E 845,791	HQ. CO. STD. SD 3.01 OR 3.11
MH-2	MANHOLE	19.9' LT @ STA 3+09	"

SEE SHEET 7 OF 9 FOR POND & OUTLET DETAILS



PROFILE SCALES: HOR.-1"=50'
VER.-1"=5'

DEPARTMENT OF PLANNING AND ZONING
David S. McLaughlin 8-25-88
 CHIEF, DIVISION OF COMMUNITY PLANNING AND LAND DEVELOPMENT DATE

DEPARTMENT OF PUBLIC WORKS: HOWARD COUNTY, MARYLAND
Donald Chapman 8/22/88
 CHIEF, LAND DEVELOPMENT DIVISION DATE

William E. Ray 8-22-88
 CHIEF, BUREAU OF ENGINEERING DATE

David W. McKeand 8/22/88
 CHIEF, BUREAU OF HIGHWAYS DATE

CERTIFICATION BY THE DEVELOPER
 I CERTIFY THAT ALL DEVELOPMENT AND/OR CONSTRUCTION WILL BE DONE ACCORDING TO THESE PLANS, AND THAT ANY RESPONSIBLE PERSONNEL INVOLVED IN THE CONSTRUCTION PROJECT WILL HAVE A CERTIFICATE OF ATTENDANCE AT A DEPARTMENT OF NATURAL RESOURCES APPROVED TRAINING PROGRAM FOR THE CONTROL OF SEDIMENT AND EROSION BEFORE BEGINNING THE PROJECT. I WILL PROVIDE THE HOWARD SOIL CONSERVATION DISTRICT WITH AN "AS BUILT" PLAN OF THE POND WITHIN 30 DAYS OF COMPLETION.

David P. Scheffacker 6/1/88
 DAVID P. SCHEFFACKER DATE

CERTIFICATION BY THE ENGINEER
 I CERTIFY THAT THIS PLAN FOR POND CONSTRUCTION, EROSION AND SEDIMENT CONTROL REPRESENTS A PRACTICAL AND WORKABLE PLAN BASED ON MY PERSONAL KNOWLEDGE OF THE SITE CONDITIONS. THIS PLAN WAS PREPARED IN ACCORDANCE WITH THE REQUIREMENTS OF THE HOWARD SOIL CONSERVATION DISTRICT. I HAVE NOTIFIED THE DEVELOPER THAT HE MUST PROVIDE THE HOWARD SOIL CONSERVATION DISTRICT WITH AN "AS BUILT" PLAN OF THE POND WITHIN 30 DAYS OF COMPLETION.

C. Robert Shinnham MAY 31, 1988
 C. ROBERT SHINNHAM DATE

THESE PLANS HAVE BEEN REVIEWED FOR THE HOWARD SOIL CONSERVATION DISTRICT AND MEET THE TECHNICAL REQUIREMENTS FOR SMALL POND CONSTRUCTION, SOIL EROSION AND SEDIMENT CONTROL.

James McHale 7/18/88
 U.S. SOIL CONSERVATION SERVICE DATE

THESE PLANS FOR SMALL POND CONSTRUCTION, SOIL EROSION AND SEDIMENT CONTROL MEET THE REQUIREMENTS OF THE HOWARD SOIL CONSERVATION DISTRICT.

Stephen T. Johns 7-18-88
 HOWARD SOIL CONSERVATION DISTRICT DATE

Date	No	Revision Description

OWNER AND DEVELOPER
 THE ARUNDEL CORPORATION
 110 WEST RD.
 TOWSON, MD. 21204
 301-296-6400

AREA
 FALLING WATERS
 PARCELS 82 & 83 TAX MAP 47
 6TH ELECTION DISTRICT HOWARD CO., MD.

TITLE - STORM DRAIN
 PLAN AND PROFILE

THE ARUNDEL CORPORATION
 ARUNDEL CORPORATE CENTER, SUITE 100
 110 WEST RD. TOWSON, MD. 21204
 (301) 296-6400
 LAND PLANNERS, LAND SURVEYORS, CIVIL ENGINEERS

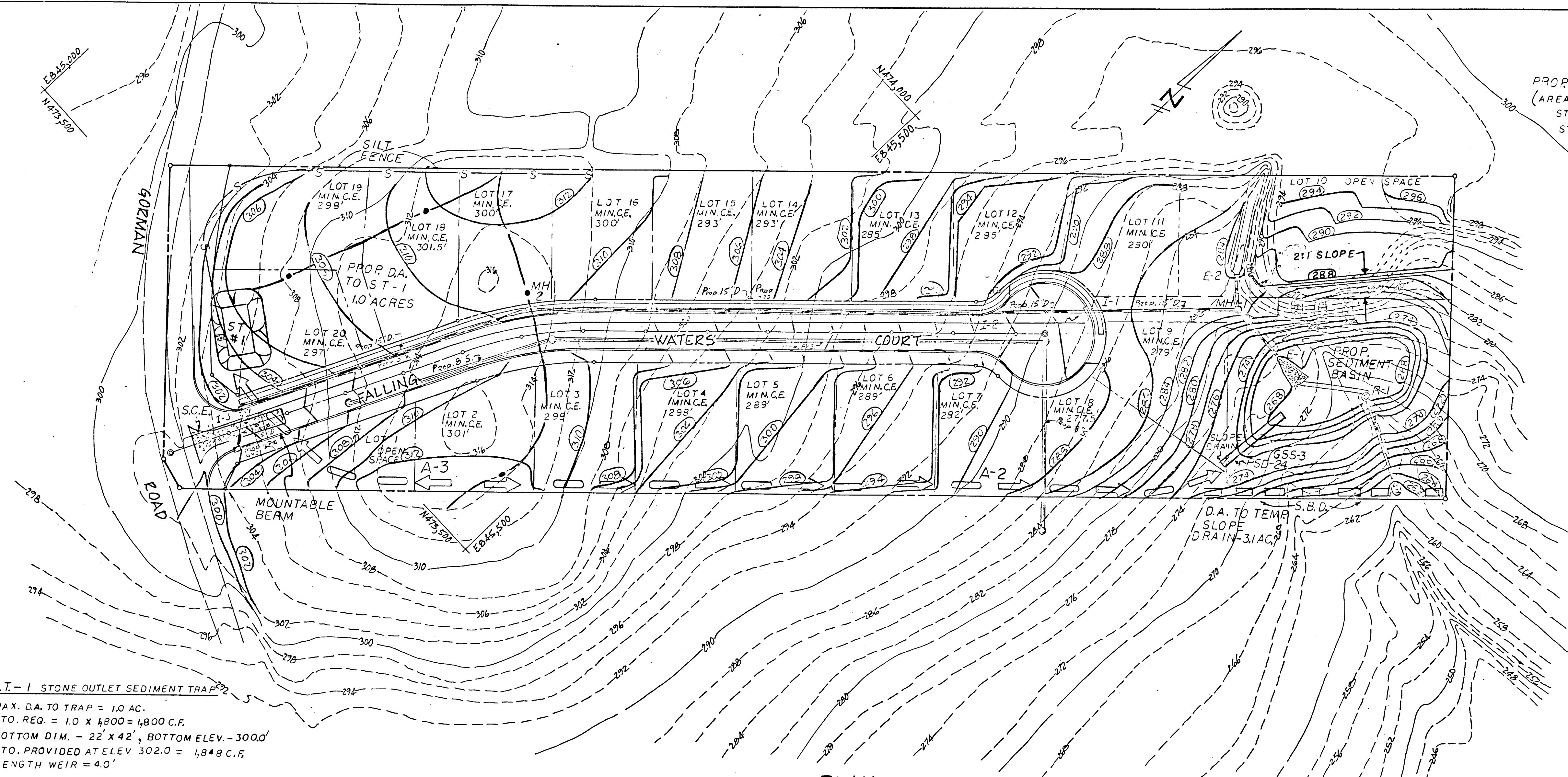
SCALE: AS SHOWN
 DATE: 5/31/88
 DESIGNED: CHS
 DRAWN: CHS
 CHECKED: CHS
 APPROVED: DPS

SHEET 6 OF 9

F-88-208

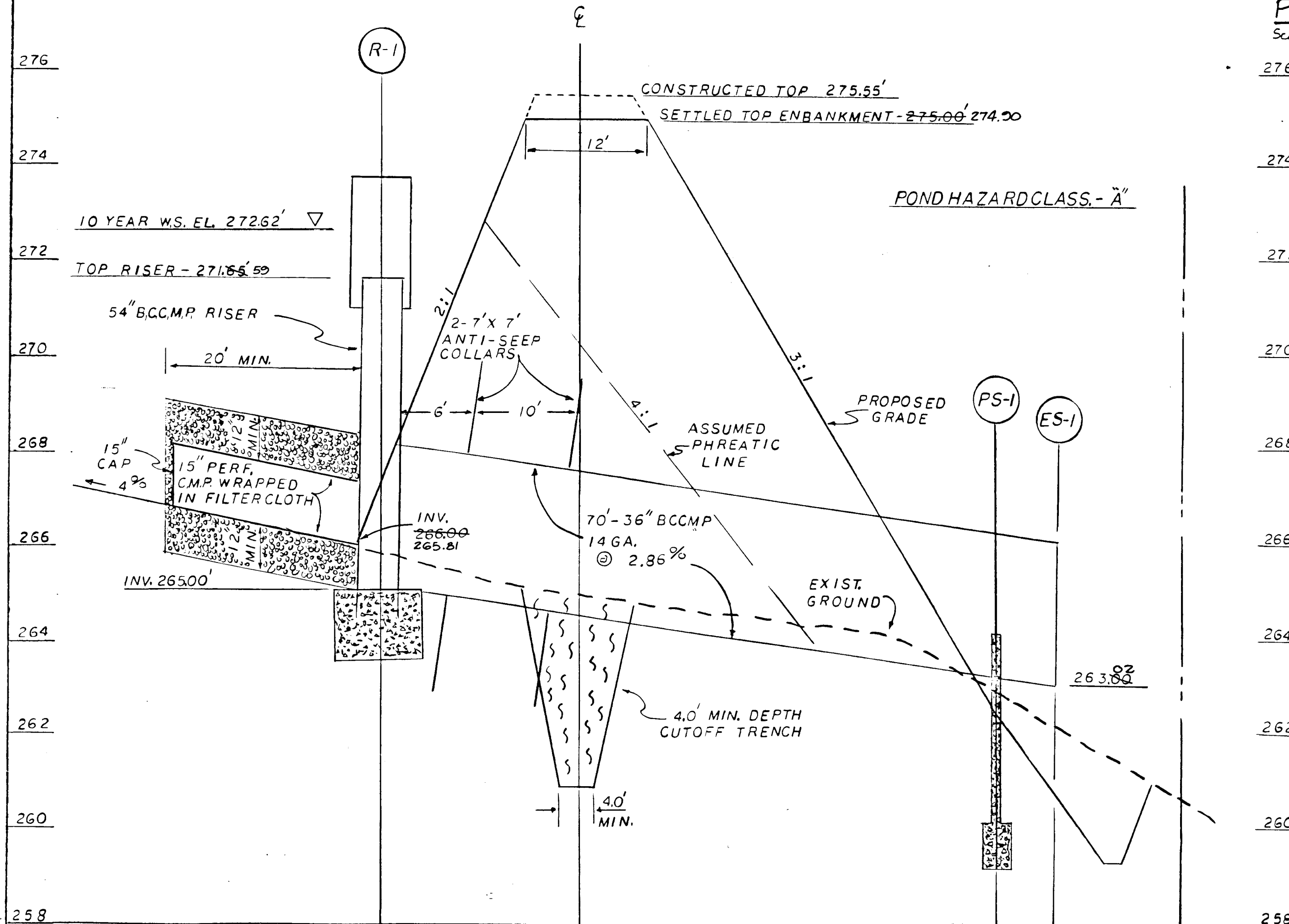
1375

AS-BUILT 1-31-92



S.T. - 1 STONE OUTLET SEDIMENT TRAP
MAX. D.A. TO TRAP = 10 AC.
STO. REQ. = 1.0 X 1,800 = 1,800 C.F.
BOTTOM DIM. - 22' X 42', BOTTOM ELEV. - 3000'
STO. PROVIDED AT ELEV. 302.0 = 1,848 C.F.
LENGTH WEIR = 4.0'

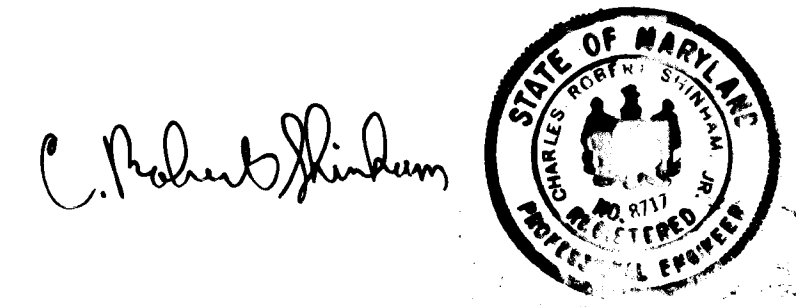
PLAN
SCALE: 1"=50'



SEDIMENT BASIN
PROFILE & PIPE
SCALE: HOR. - 1"=10'
VER. - 1"=2'

SEE SHEET 7 FOR DAM CROSS SECTION,
RISER DETAIL, PIPE SUPPORT, STILLING
BASIN, AND SWM DETAILS.

SEE SHEET 9 FOR SEDIMENT CONTROL
DETAILS.



DEPARTMENT OF PLANNING AND ZONING
Frank S. McLaughlin 1-15-88
CHIEF, DIVISION OF COMMUNITY PLANNING AND ZONING DATE

DEPARTMENT OF PUBLIC WORKS: HOWARD COUNTY, MARYLAND
Paul J. Evans 5/12/88
CHIEF, LAND DEVELOPMENT DIVISION DATE
Shanville W. Waldman 8/20/88
CHIEF, BUREAU OF ENGINEERING DATE
Richard S. G. ... 8-22-88
CHIEF, BUREAU OF HIGHWAYS DATE

CERTIFICATION BY THE DEVELOPER
I CERTIFY THAT ALL DEVELOPMENT AND/OR CONSTRUCTION WILL BE DONE ACCORDING TO THESE PLANS, AND THAT ANY RESPONSIBLE PERSONNEL INVOLVED IN THE CONSTRUCTION PROJECT WILL HAVE A CERTIFICATE OF ATTENDANCE AT A DEPARTMENT OF NATURAL RESOURCES APPROVED TRAINING PROGRAM FOR THE CONTROL OF SEDIMENT AND EROSION BEFORE BEGINNING THE PROJECT. I WILL PROVIDE THE HOWARD SOIL CONSERVATION DISTRICT WITH AN "AS BUILT" PLAN OF THE POND WITHIN 30 DAYS OF COMPLETION.
David P. Schreffacker 6/1/88
DAVID P. SCHREFFACKER DATE

CERTIFICATION BY THE ENGINEER
I CERTIFY THAT THIS PLAN FOR POND CONSTRUCTION, EROSION AND SEDIMENT CONTROL REPRESENTS A PRACTICAL AND WORKABLE PLAN BASED ON MY PERSONAL KNOWLEDGE OF THE SITE CONDITIONS. THIS PLAN WAS PREPARED IN ACCORDANCE WITH THE REQUIREMENTS OF THE HOWARD SOIL CONSERVATION DISTRICT. I HAVE NOTIFIED THE DEVELOPER THAT HE MUST PROVIDE THE HOWARD SOIL CONSERVATION DISTRICT WITH AN "AS BUILT" PLAN OF THE POND WITHIN 30 DAYS OF COMPLETION.
C. Robert Shinham 6/2/88
C. ROBERT SHINHAM DATE

THESE PLANS HAVE BEEN REVIEWED FOR THE HOWARD SOIL CONSERVATION DISTRICT AND MEET THE TECHNICAL REQUIREMENTS FOR SMALL POND CONSTRUCTION, SOIL EROSION AND SEDIMENT CONTROL.
John M. Helm 7/18/88
U.S. SOIL CONSERVATION SERVICE DATE

THESE PLANS FOR SMALL POND CONSTRUCTION, SOIL EROSION AND SEDIMENT CONTROL MEET THE REQUIREMENTS OF THE HOWARD SOIL CONSERVATION DISTRICT.
Robert W. Ziehm 7/18/88
HOWARD SOIL CONSERVATION DISTRICT DATE

Date	No	Revision Description

OWNER AND DEVELOPER
THE ARUNDEL CORPORATION
110 WEST RD.
TOWSON, MD. 21204
301-295-6400

AREA
FALLING WATERS
PARCELS 82 & 83 TAX MAP 47
6TH ELECTION DISTRICT HOWARD CO., MD.

TITLE
SEDIMENT CONTROL PLAN

THE ARUNDEL CORPORATION
ARUNDEL CORPORATE CENTER, SUITE 100
110 WEST RD. TOWSON, MD. 21204
(301) 296-6400
LAND PLANNERS, LAND SURVEYORS, CIVIL ENGINEERS

SCALE: AS SHOWN
DATE: 6/2/88
DESIGNED: CRS
DRAWN: CRS
CHECKED: RHJ
APPROVED: DPS

SHEET 8 OF 9

