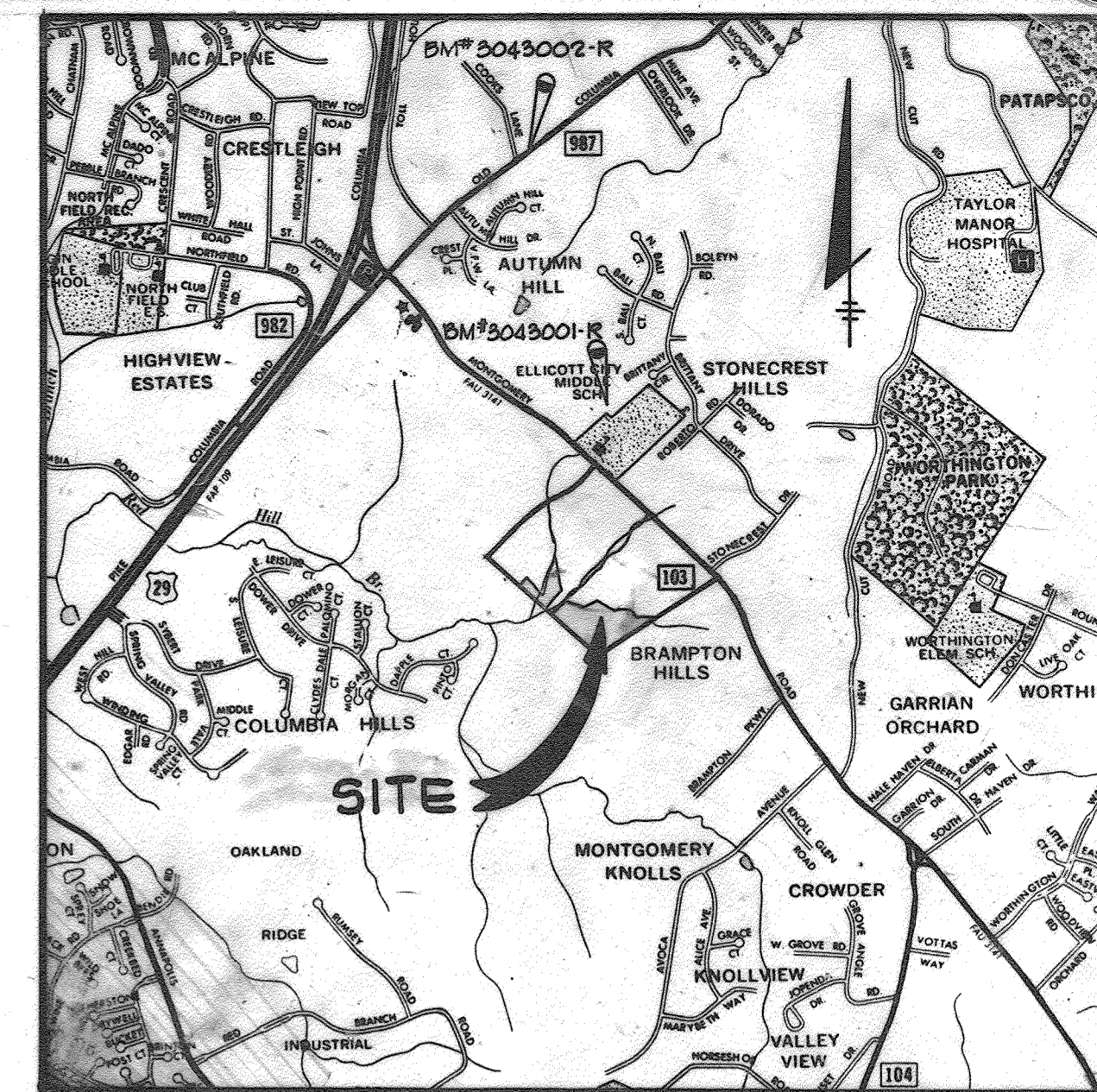


SHEET INDEX	
NO.	DESCRIPTION
1	TITLE SHEET
2	PLAN OF AUTUMN HARVEST AND SPRING HARVEST COURT
3	PROFILES
4	DETAILS, PROFILES AND DRAINAGE AREA MAP
5	GRADING AND SEDIMENT CONTROL PLAN
6	SEDIMENT CONTROL NOTES AND DETAILS
7	STREET TREE PLAN

STORM DRAIN AND ROADWAY LONG GATE SECTION 1, AREA 3 2ND ELECTION DISTRICT HOWARD COUNTY, MARYLAND



VICINITY MAP
SCALE: 1" = 200'

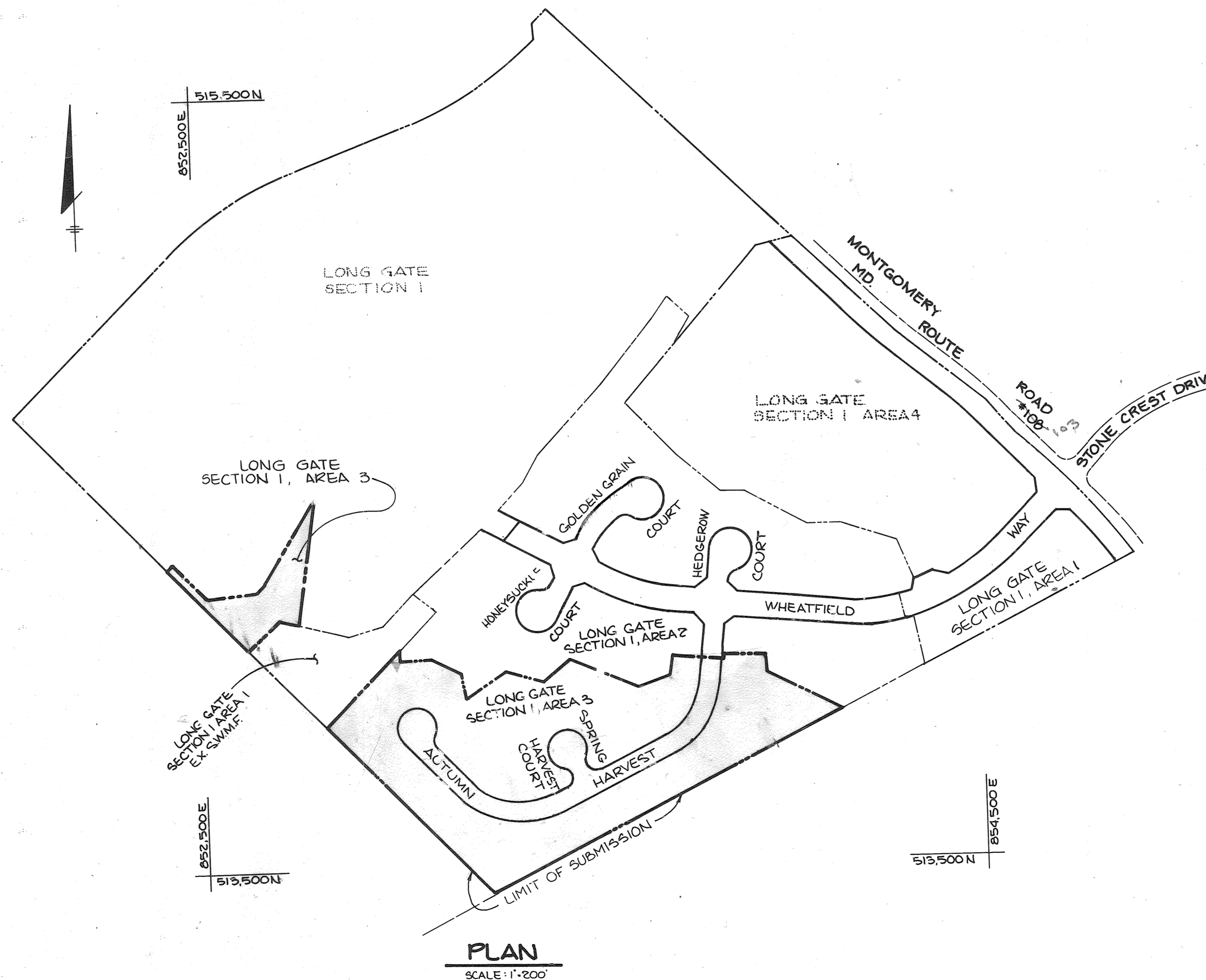
BM # 3043001-R ELEV. 497.915
CONCRETE MONUMENT AT 4 IN TRANSMISSION LINES BACK OF SCHOOL

BM # 3042002-R ELEV. 377.581
CONCRETE MONUMENT 0.5' BELOW SURFACE 14' ± NW ¼ OLD COLUMBIA PIKE 175' ± NE ¼ OF COOKS LANE

GENERAL NOTES

- ALL WORK SHALL BE PERFORMED IN ACCORDANCE WITH THE HOWARD COUNTY DESIGN MANUAL, VOLUME IV, STANDARD SPECIFICATIONS AND DETAILS FOR ROAD CONSTRUCTION.
- APPROXIMATE LOCATION OF EXISTING UTILITIES ARE SHOWN. THE CONTRACTOR SHALL TAKE ALL NECESSARY PRECAUTIONS TO PROTECT THE EXISTING UTILITIES AND MAINTAIN UNINTERRUPTED SERVICE. ANY DAMAGE INCURRED DUE TO CONTRACTOR'S OPERATION SHALL BE REPAIRED IMMEDIATELY AT THE CONTRACTOR'S EXPENSE.
- THE CONTRACTOR SHALL TEST PIT EXISTING UTILITIES WHERE DIRECTED BY THE ENGINEER. A MINIMUM OF TWO WEEKS IN ADVANCE OF CONSTRUCTION OPERATIONS.
- CONTRACTOR TO NOTIFY THE FOLLOWING UTILITIES AT LEAST THREE DAYS BEFORE STARTING WORK SHOWN ON THESE DRAWINGS.

BELL TELEPHONE SYSTEM	393-3649
LONG DISTANCE CABLE DIVISION	393-3553 OR 3554
BALTIMORE GAS AND ELECTRIC	539-8000 EXT. 691
HOWARD COUNTY BUREAU OF UTILITIES	992-2366
HOWARD COUNTY CONSTRUCTION INSPECTION SURVEY DIVISION	992-2417/2418
- ALL INLETS SHALL BE CONSTRUCTED IN ACCORDANCE WITH HOWARD COUNTY STANDARDS. ALL STREET CURB RETURNS SHALL HAVE 20.0' RADII UNLESS OTHERWISE NOTED.
- STORM DRAIN TRENCHES WITHIN ROAD RIGHT OF WAY SHALL BE BACKFILLED AND COMPACTED IN ACCORDANCE WITH HOWARD COUNTY ROAD CODE.
- INSTALLATION OF TRAFFIC CONTROL DEVICES, MARKING AND SIGNING SHALL BE IN ACCORDANCE WITH THE MANUAL OF UNIFORM TRAFFIC CONTROL DEVICES 1978 EDITION.
- PIPE SHALL NOT BE INSTALLED BY THE CONTRACTOR UNTIL THE LENGTH CALLED FOR AT EACH STATION HAS BEEN APPROVED BY THE ENGINEER IN THE FIELD.
- DESIGNED TRAFFIC SPEED IN ACCORDANCE WITH THE AMERICAN ASSOCIATION OF STATE HIGHWAY OFFICIAL STANDARDS:
CUL-DE-SAC DESIGNED FOR 30 M.P.H., LOCAL STREETS DESIGNED FOR 30 M.P.H.,
- ALL ELEVATIONS SHOWN ARE BASED ON U.S.C. AND G.S. MEAN SEA LEVEL DATUM 1929.
- ALL FILL AREAS WITHIN ROADWAYS AND UNDER STRUCTURES TO BE COMPACTED TO A MINIMUM 95% OF MAXIMUM OBTAINABLE DENSITY DETERMINED BY MARSHALL PROCTOR.
- ALL PIPE ELEVATIONS SHOWN ARE INVERT Ω ELEVATIONS.
- PROFILE STATIONS SHALL BE ADJUSTED AS NECESSARY TO CONFORM TO PLAN DIMENSIONS.
- SUBJECT PROPERTY ZONED R-SC AS PER 8-2-85 COMPREHENSIVE ZONING PLAN
- TOPO TAKEN FROM FIELD RUN SURVEY BY BURDUM AND JESCHKE, INC., DATED JANUARY, 1984.



NOTE: WP-23-058 (APP. 3-16-2023) FOR AUTUMN HARVEST STREAM STABILIZATION DESIGNED UNDER CAPITAL PROJECT D-1158 AND CONSTRUCTED UNDER D-176. THIS PROJECT ADDRESSES INSTABILITY ALONG THE STREAM CHANNEL WITH GRADE CONTROL STRUCTURES AND POOLS TO DISSIPATE ENERGY. EP-20-005 PALK CAN BE REFERENCED FOR ALTERNATIVE COMPLIANCE WP-23-058 TO SECTIONS 16.116 (A) AND (B).

APPROVED: HOWARD COUNTY DEPARTMENT OF PLANNING AND ZONING	
<i>John W. Macchiarini</i>	7-11-86
CHIEF, DIVISION OF LAND DEVELOPMENT AND ZONING ADMINISTRATION	DATE
APPROVED: HOWARD COUNTY DEPARTMENT OF PUBLIC WORKS	
<i>William E. Ray</i>	7-19-86
CHIEF, BUREAU OF ENGINEERING	DATE
NO. DATE REVISION	

TRACY, SCHULTE & ASSOCIATES INC.
planning • architecture • engineering

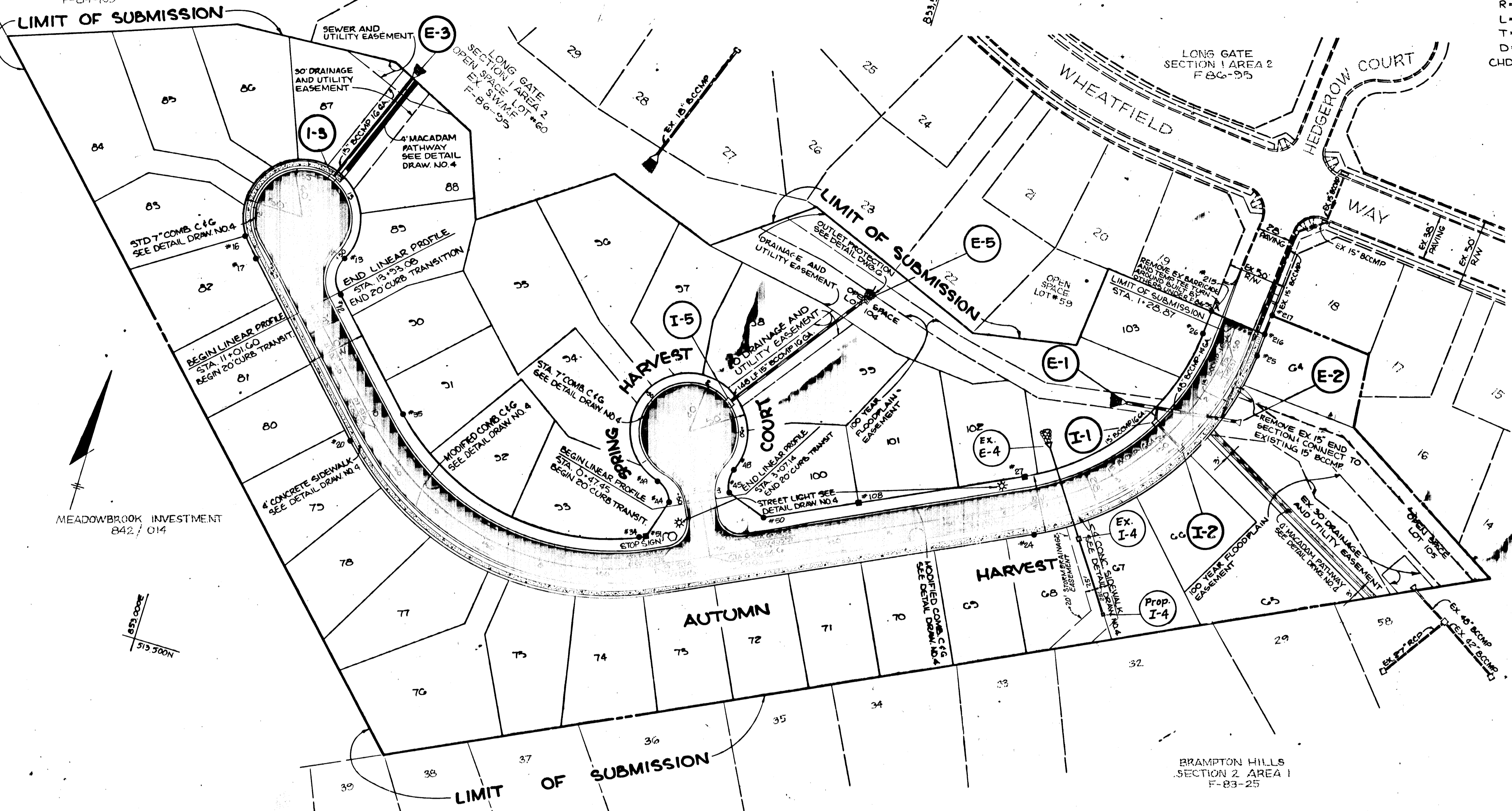
8450 Baltimore National Pike • Suite 34 • Ellicott City, Maryland 21043 • (301) 465-6105

OWNER: SECURITY DEVELOPMENT CORP. P.O. BOX 417 ELLICOTT CITY, MD. 21043	PROJECT: LONG GATE SECTION 1 AREA 3 LOTS G4 LOTS 106
DEVELOPER: SECURITY DEVELOPMENT CORP. PO BOX 417 ELLICOTT CITY, MD. 21043	LOCATION: 2ND ELECTION DISTRICT HOWARD COUNTY, MD. TAX MAP NOS. 30 & 31 ZONING MAP NOS. 30 & 31 PARCEL 18
TITLE SHEET	
DATE: DEC. 30, 1985	PROJECT NO. 8534 RSD
DES. J.K.T./J.R.S.	DRN. L.R.C.
SCALE: 1" = 200'	DRAWING 1 OF 7

LONG GATE SECTION 1 AREA 1
OPEN SPACE LOT #9
EX. S.W.M.F.
F-84-135

☉ CURVE DATA
AUTUMN HARVEST
☉ STA. 7+07.51 TO ☉ STA. 5+88.03
Δ=71°26'00"
R=225.00'
L=280.52'
T=101.78'
D=25°46'45"
CHD=N 80°13'40"W, 262.70

☉ CURVE DATA
AUTUMN HARVEST
☉ STA. 1+48.57 TO ☉ STA. 3+75.54
Δ=58°48'55"
R=225.00'
L=230.57'
T=126.82'
D=25°46'45"
CHD=S 34°38'51"W, 220.50'

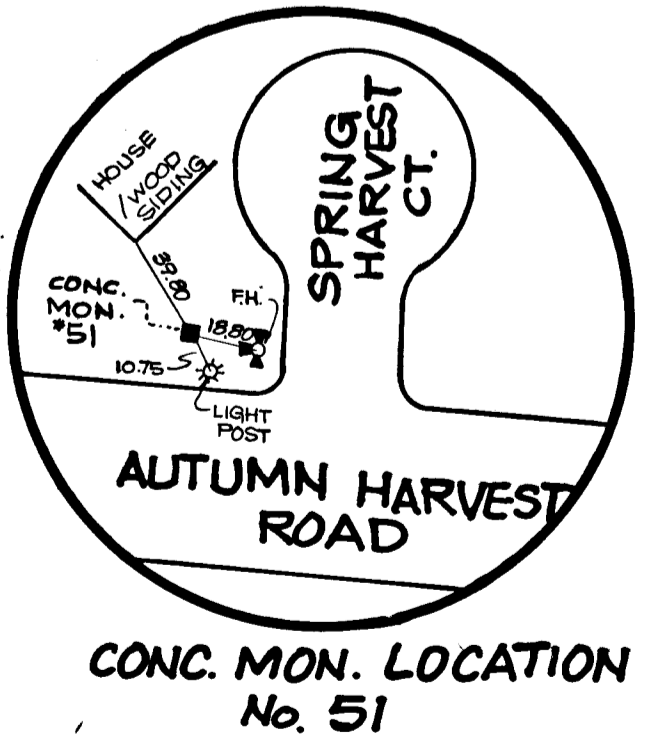
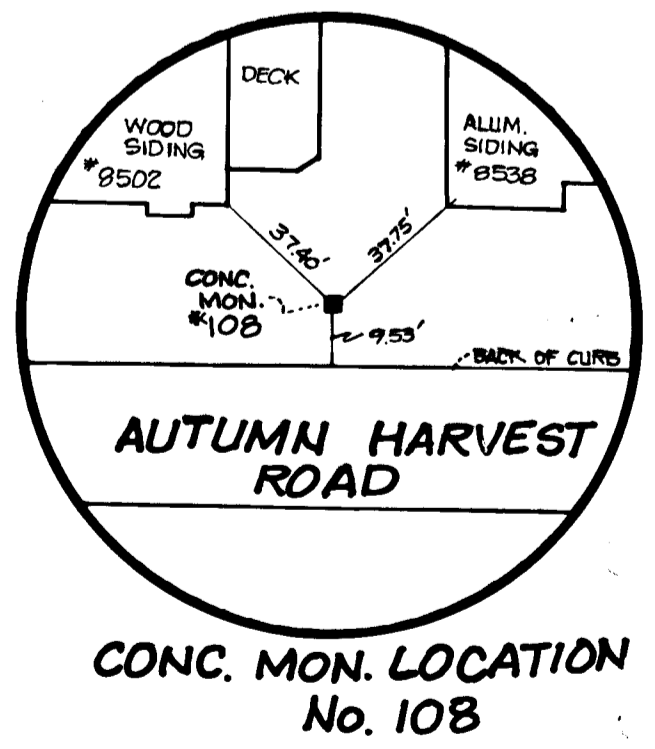
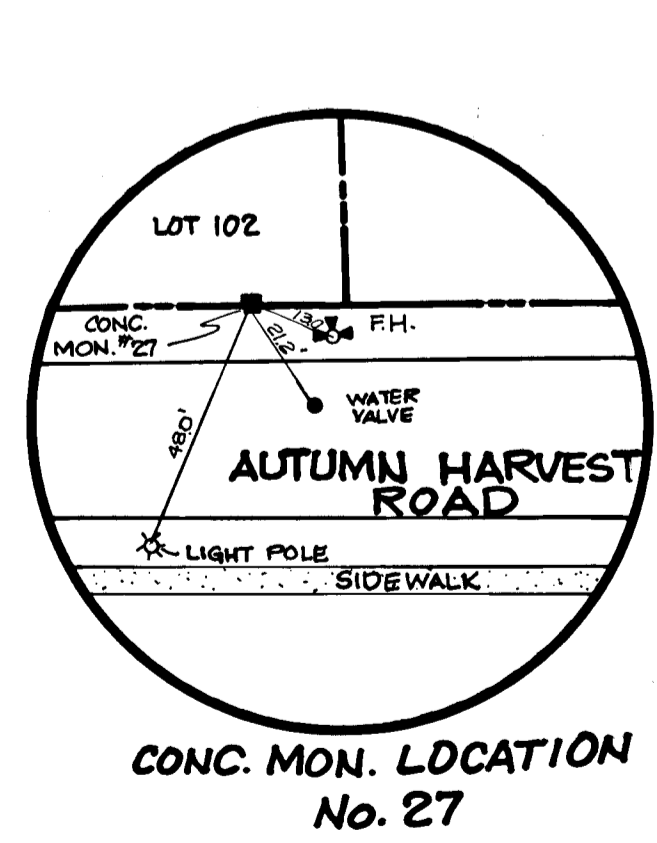


MEADOWBROOK INVESTMENT
842 / 014

BRAMPTON HILLS
SECTION 2 AREA 1
F-83-25

PLAN
SCALE: 1"=50'

PT.	DESCRIPTION	ELEV.
215	PIN w/CAP	402.26
26	"+" CUT	401.10
27	CONCRETE MONUMENT	403.15
108	" "	408.82
50	PIN w/CAP	409.37
45	" "	408.56
48	"+" CUT	408.75
44	PIN w/CAP	407.55
44	" "	408.61
51	CONCRETE MONUMENT	408.91
34	PIN w/CAP	408.94
35	" "	397.39
12	" "	395.44
13	" "	394.76
16	" "	395.27
17	" "	395.49
20	" "	397.54
23	" "	409.33
24	"+" CUT	403.15
25	PIN w/CAP	402.02
216	" "	402.35
217	" "	403.28



Nº	TYPE	LOCATION	INV. IN	INV. OUT	TOP ELEV.	REMARKS
I-4	D	106' Lt. of STA 3+43 Autumn Harvest	---	396.10	400.23	HC STD SD 4-11
E-4	15" Metal End Section	44' Rt. of STA 3+43 Autumn Harvest	394.80	394.57	---	HC STD SD 5-61

NO.	Type	Location	Inv. In.	Inv. Out	Top Elev.	Remarks
I-1	A-5	15.92' Rt. of E. STA 2+43.94 Autumn Harvest	382.81	389.81	390.06	HC STD SD 4.01
I-2	A-5	15.92' Rt. of E. STA 2+43.94 Autumn Harvest	---	396.75	400.05	HC STD SD 4.01
I-3	A-5	1.84' Lt. of LP STA 12+81.98 Autumn Harvest	---	388.42	393.87	HC STD SD 4.01
E-1	48" Metal End Section	44.63' Rt. of E. STA 2+52.54 Autumn Harvest	386.18	385.96	---	HC STD SD 5.61
E-2	48" Metal End Section	36.04' Lt. of E. STA 2+00.98 Autumn Harvest	392.87	391.53	---	HC STD SD 5.61
E-3	15" Metal End Section	114.78' Lt. of LP STA 12+81.98 Autumn Harvest	375.00	374.64	---	HC STD SD 5.61
I-5	A-5	0 LP STA 2+23.20 Spring Harvest Court	---	397.72	405.42	HC STD SD 4.01
E-5	15" Metal End Section	148' Rt. of LP STA 2+18.08 Spring Harvest Court	381.95	381.30	---	HC STD SD 5.61

NOTE: All Storm Drain Pipe bedding shall be class "C" unless otherwise noted.

APPROVED: HOWARD COUNTY DEPARTMENT OF PUBLIC WORKS
[Signature]
CHIEF, BUREAU OF ENGINEERING DATE

APPROVED: HOWARD COUNTY OFFICE OF PLANNING AND ZONING
[Signature]
CHIEF, DIVISION OF LAND DEVELOPMENT AND ZONING ADMINISTRATION DATE

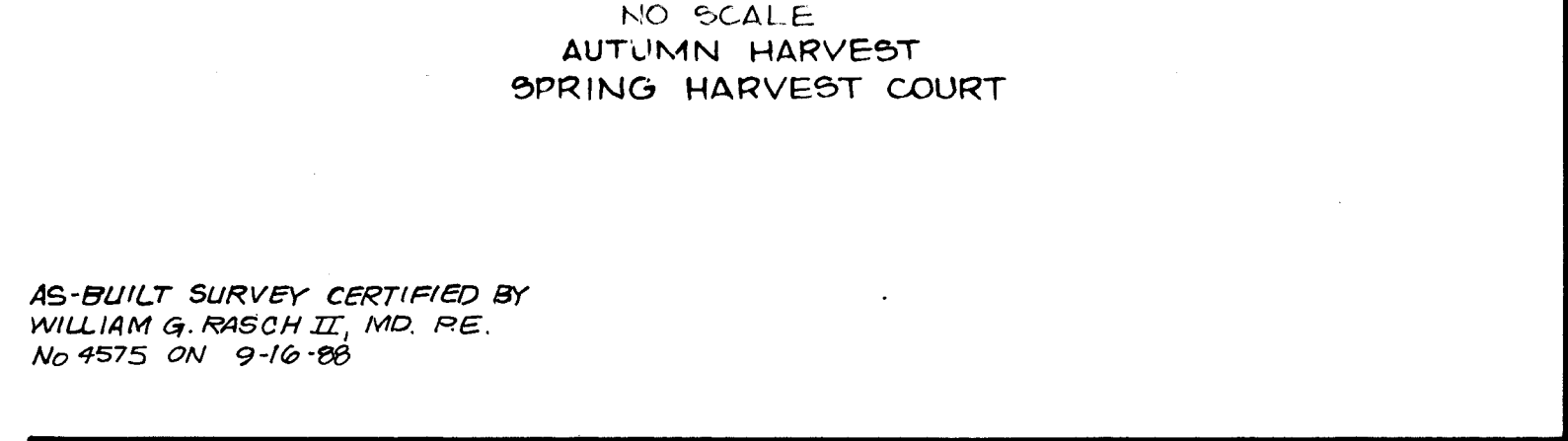
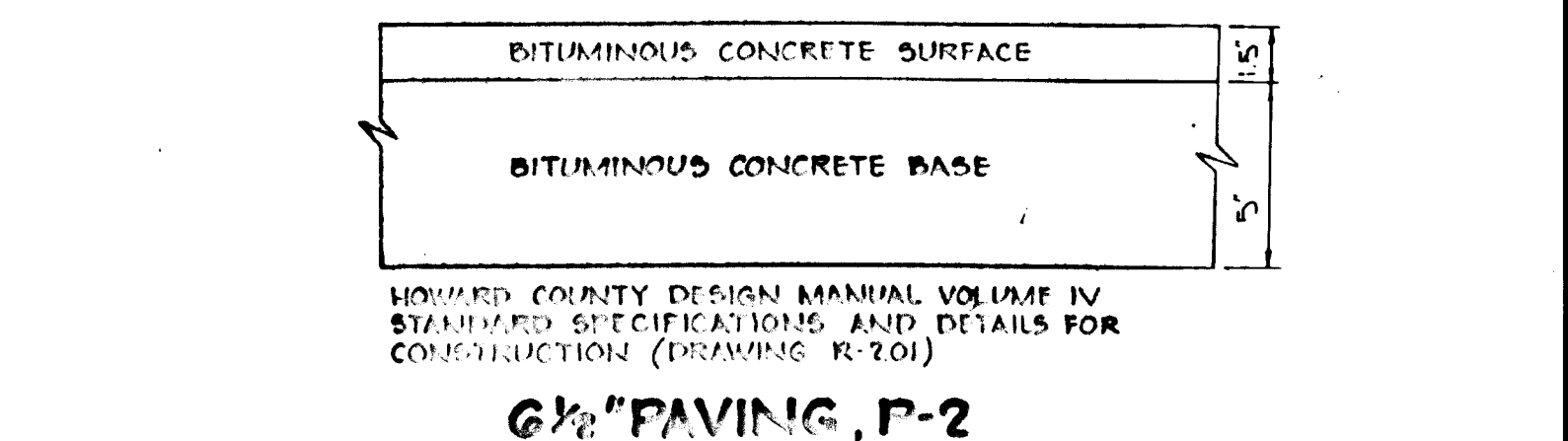
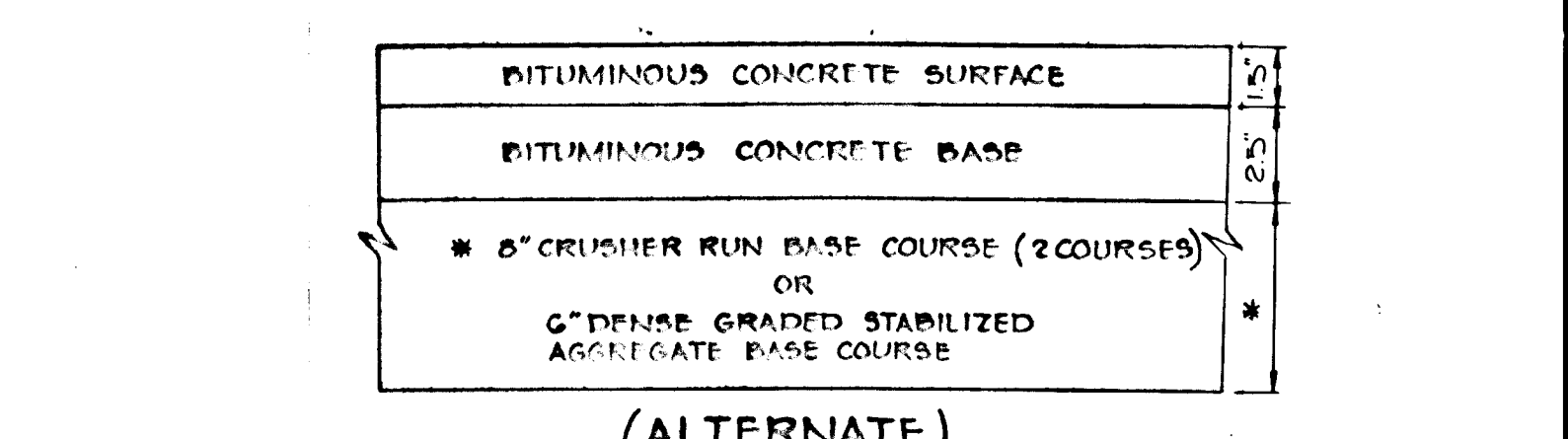
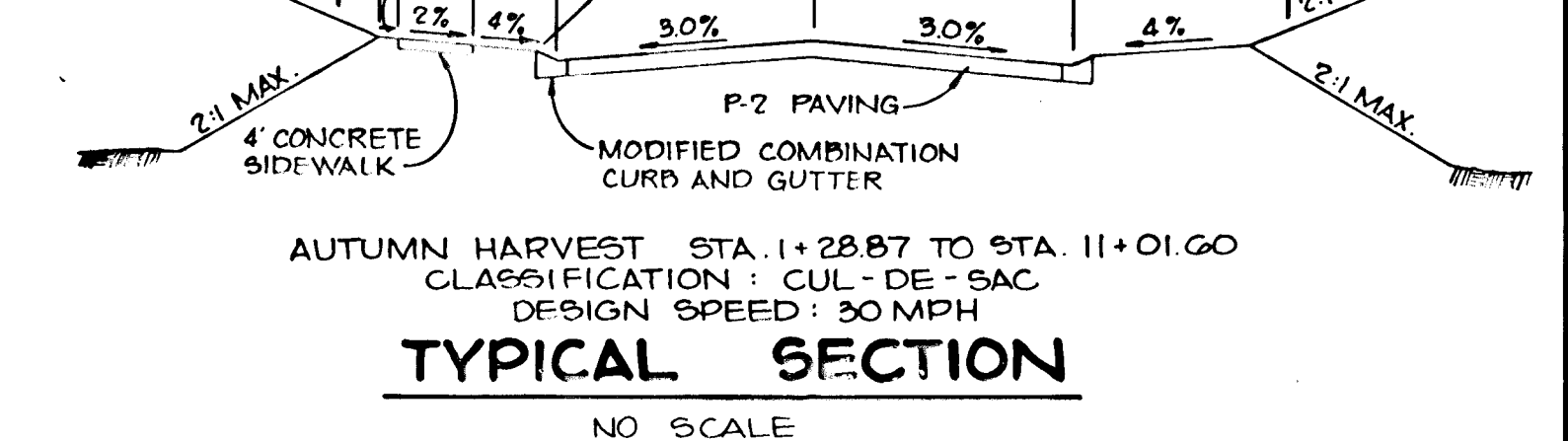
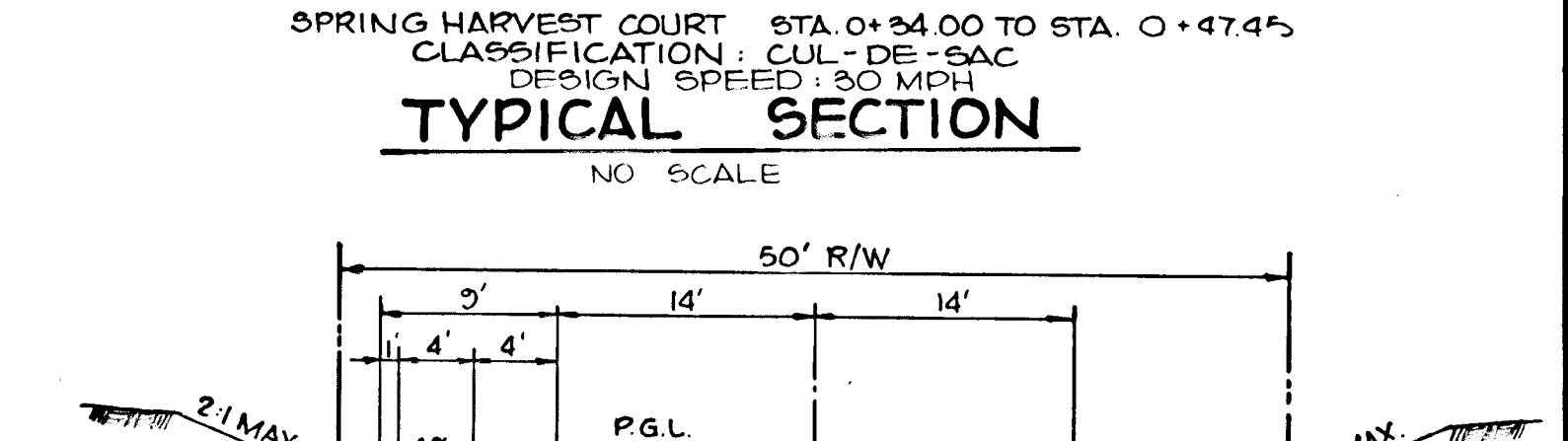
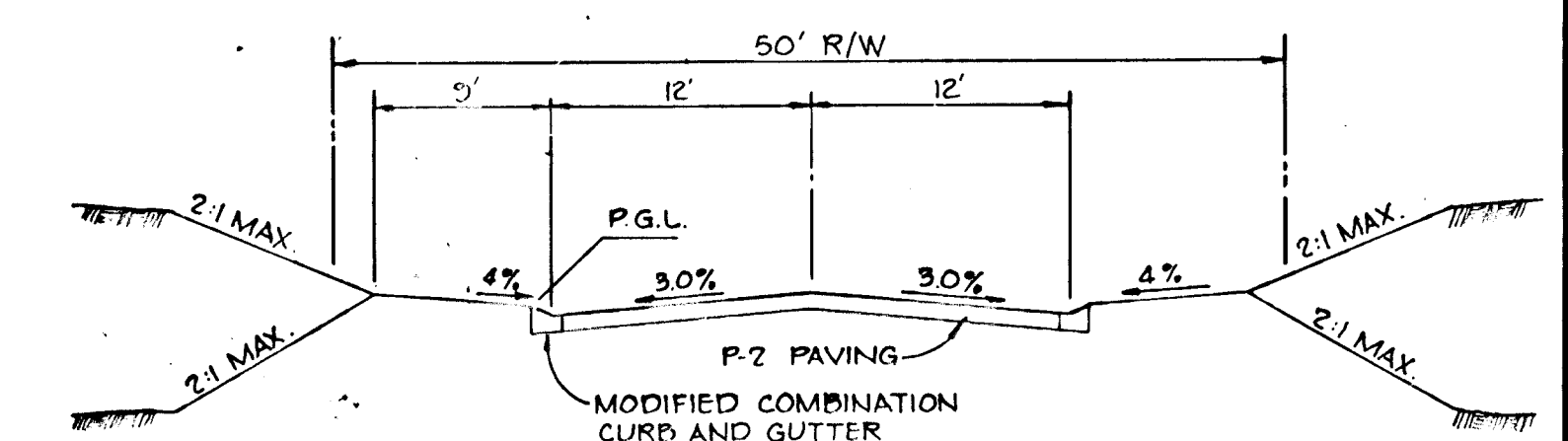
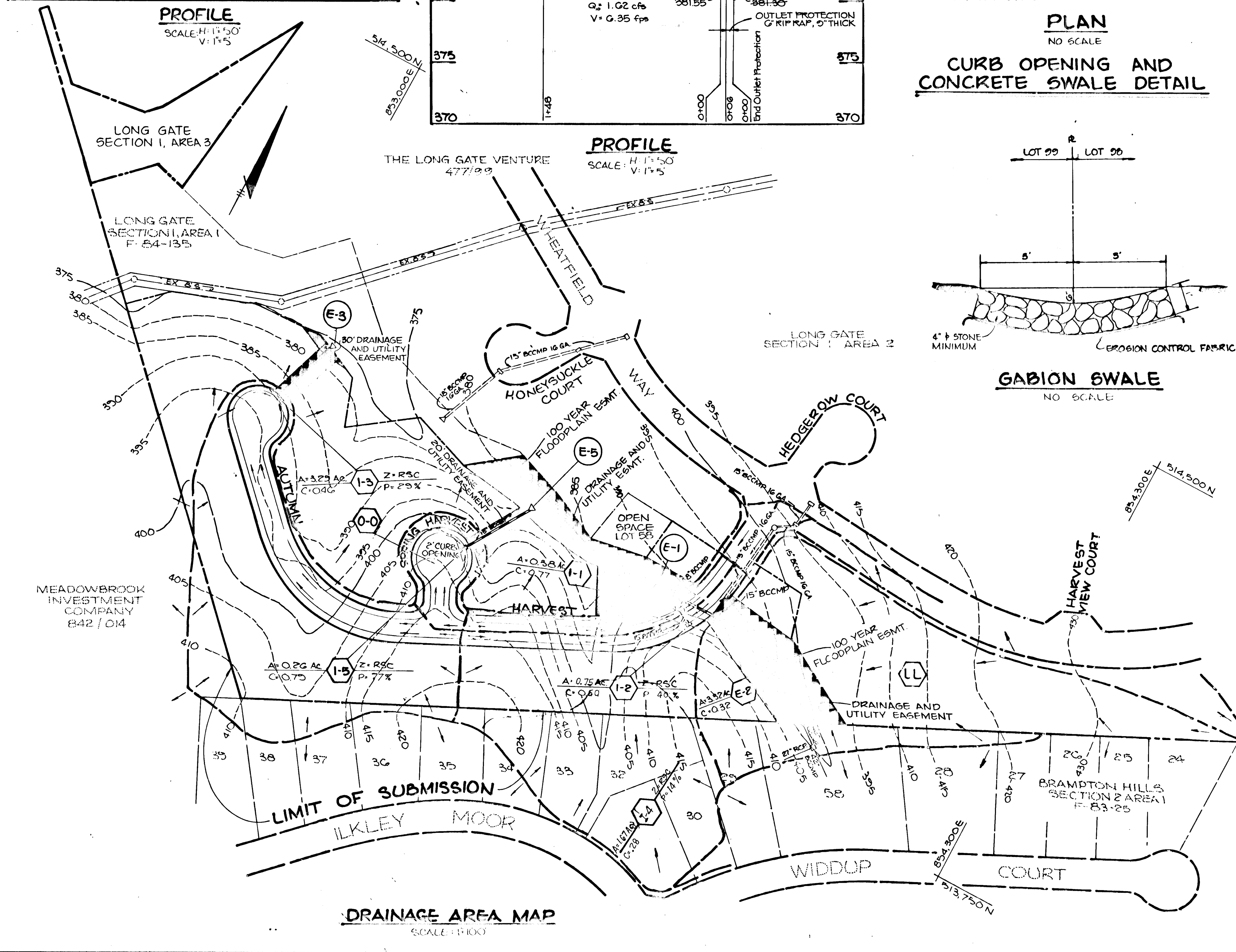
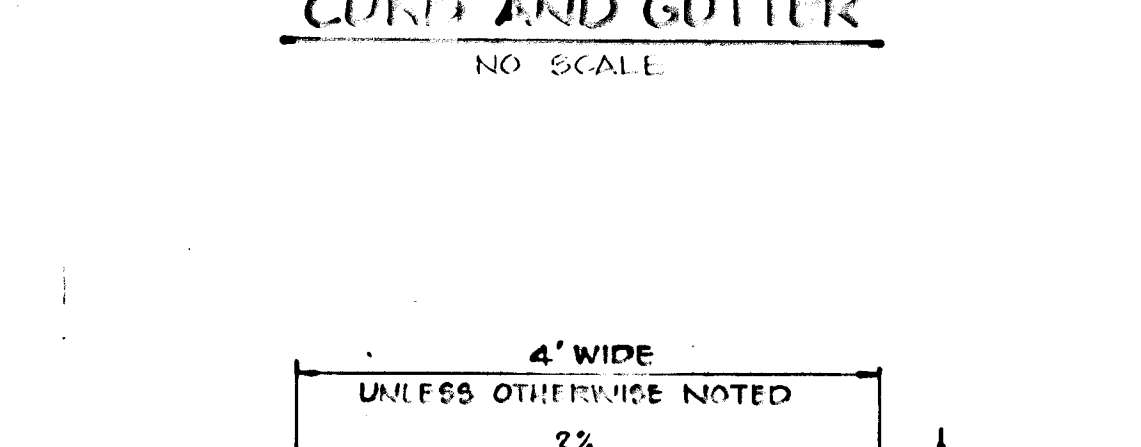
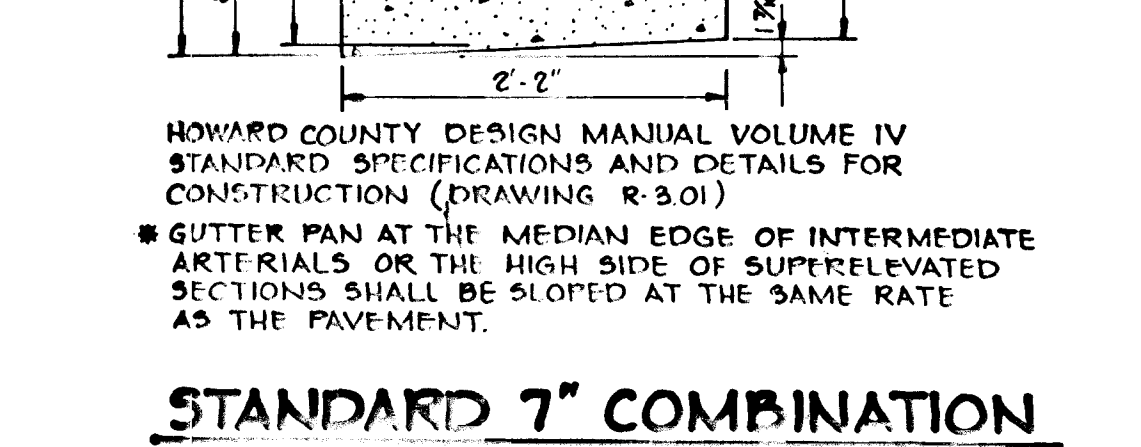
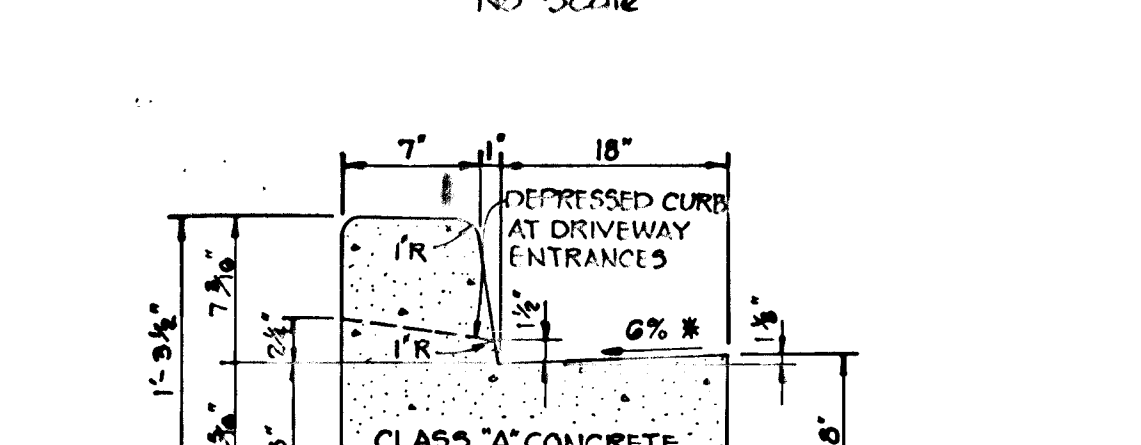
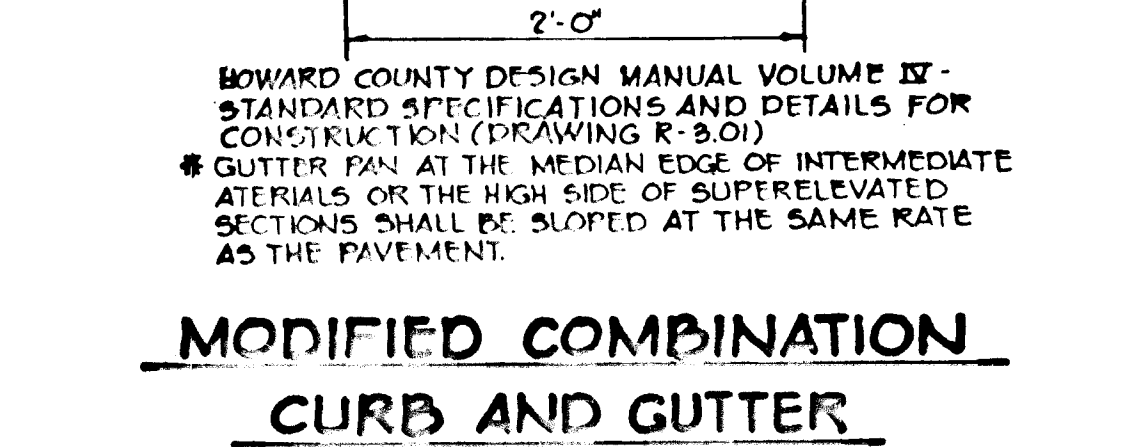
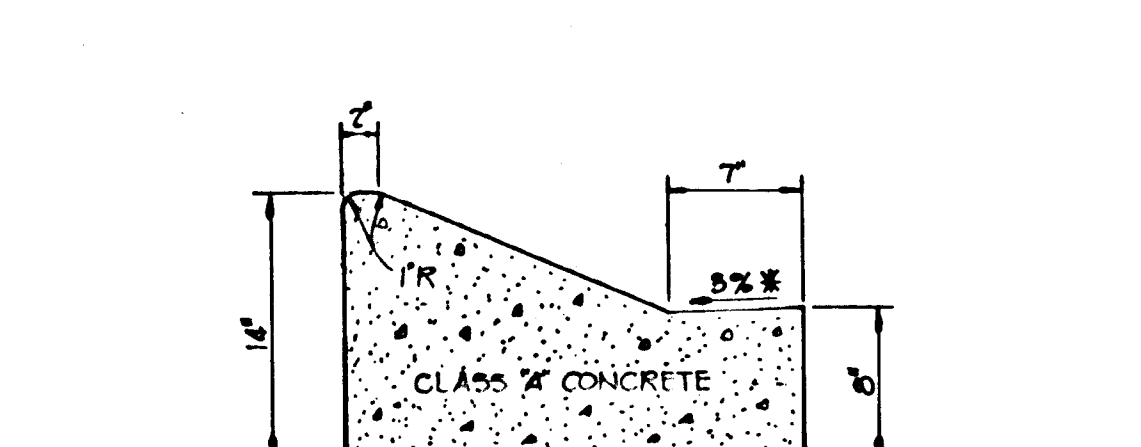
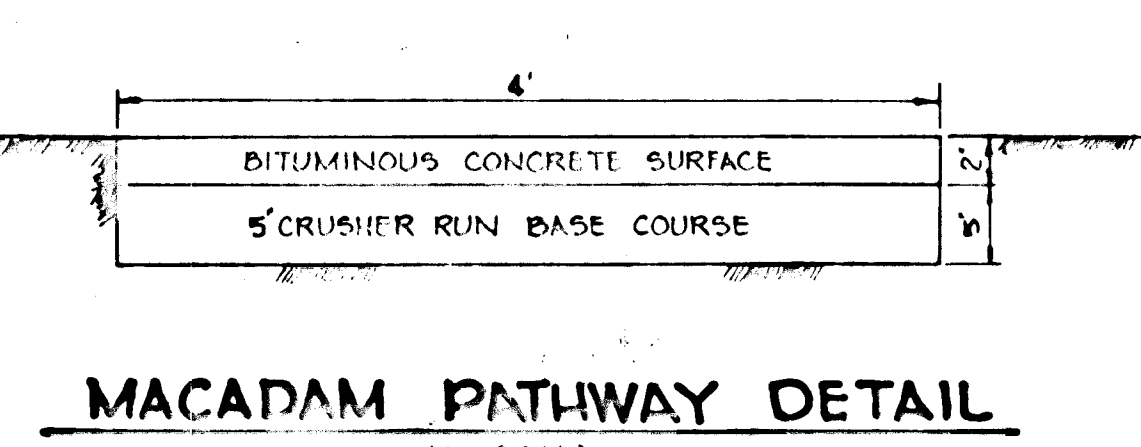
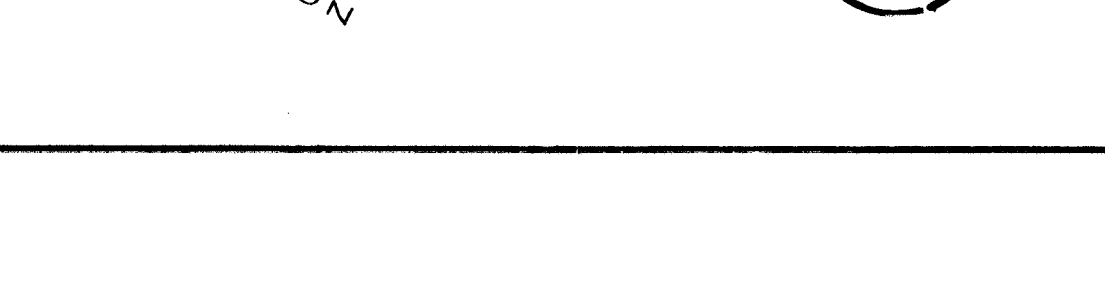
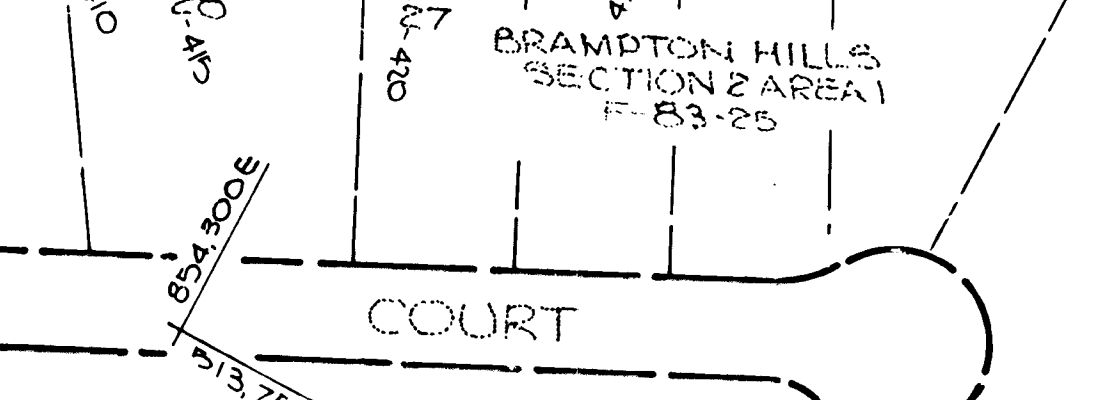
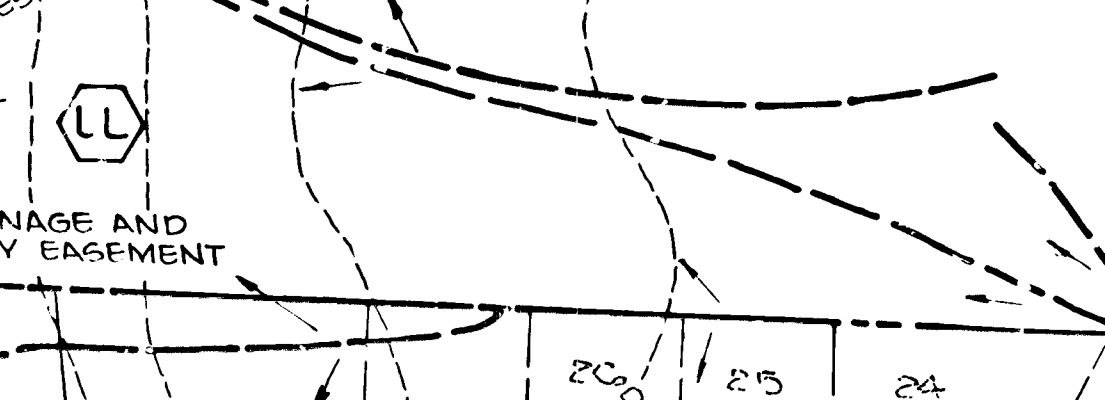
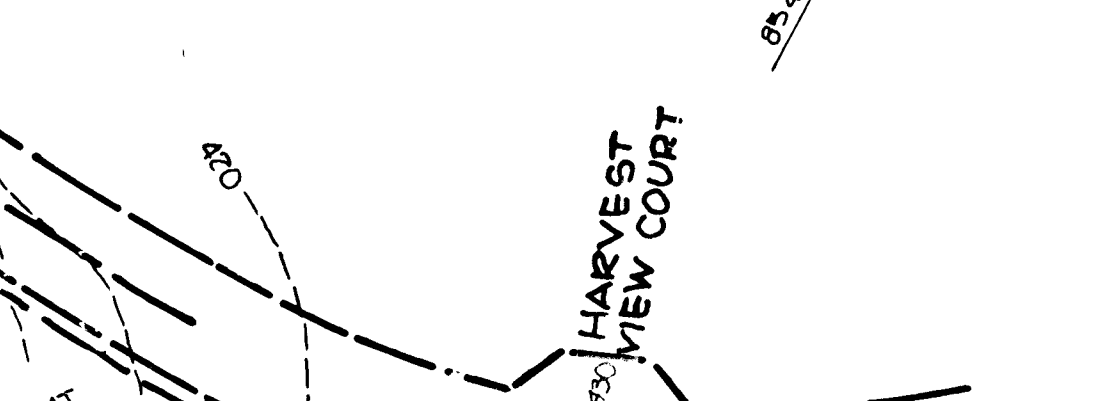
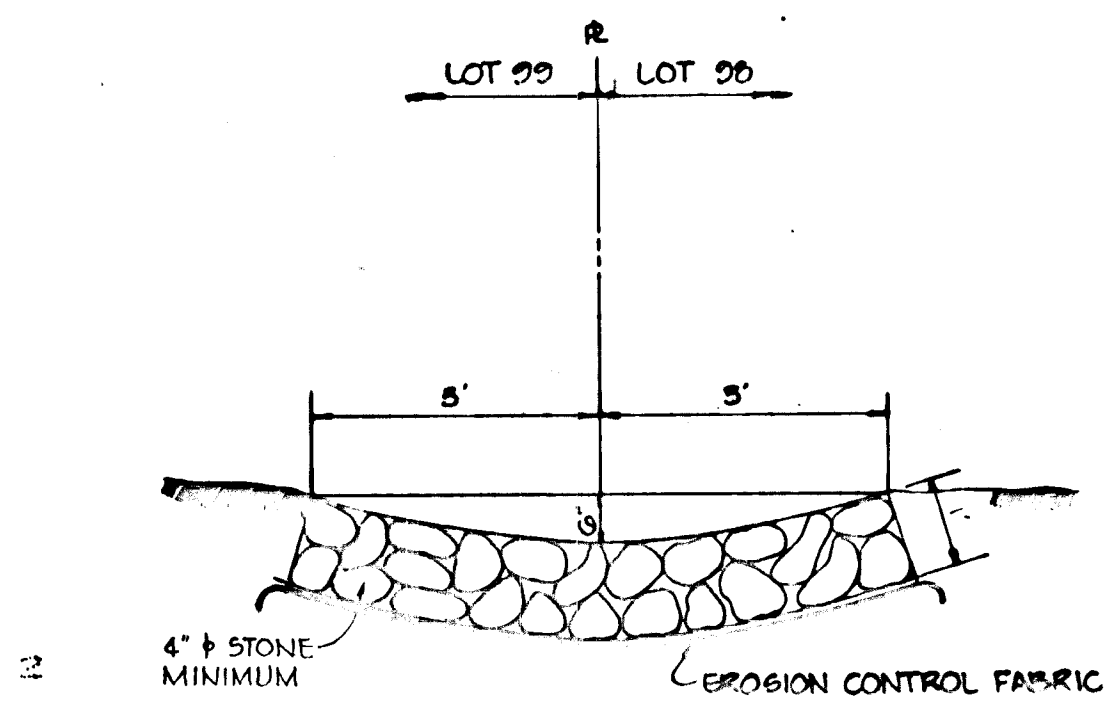
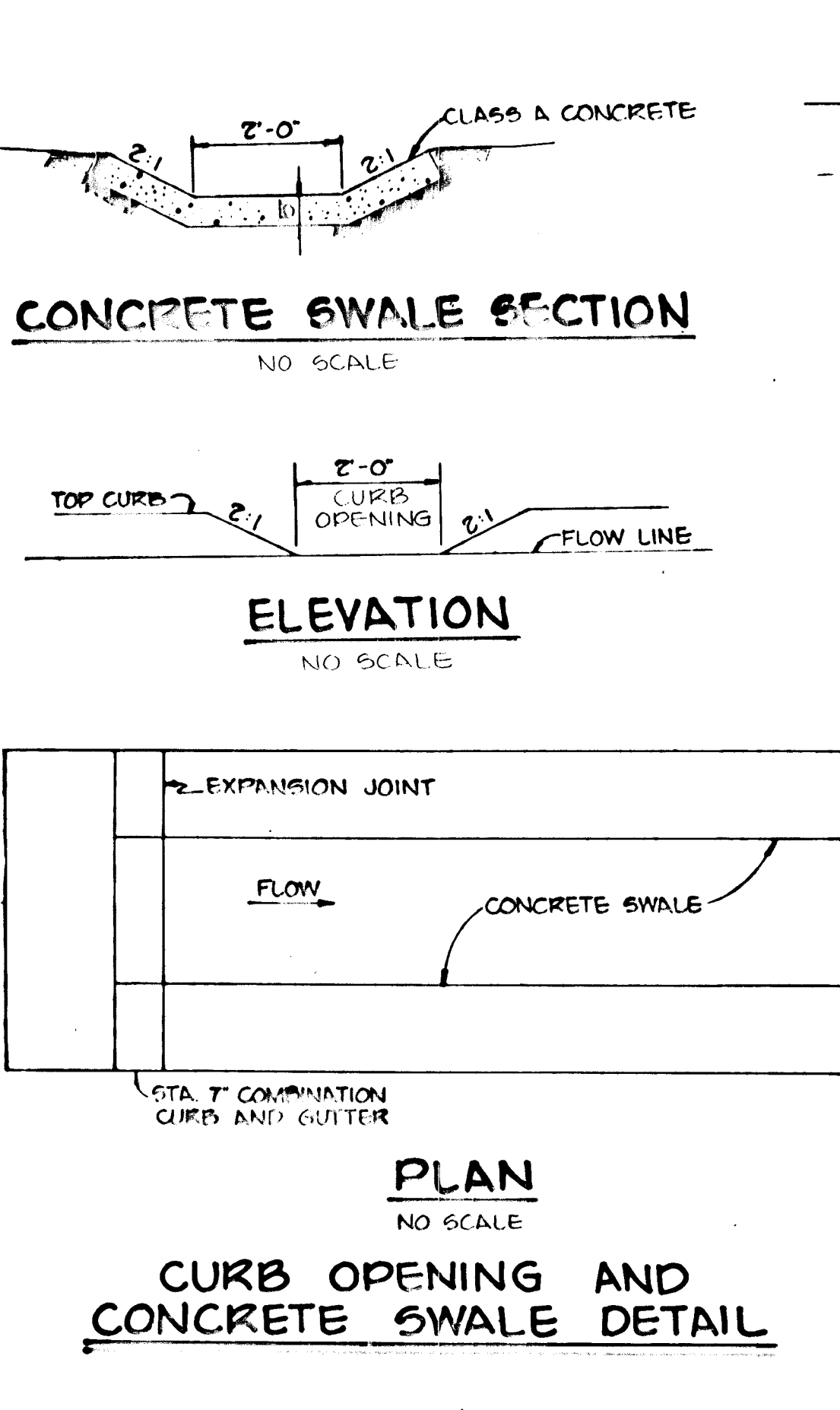
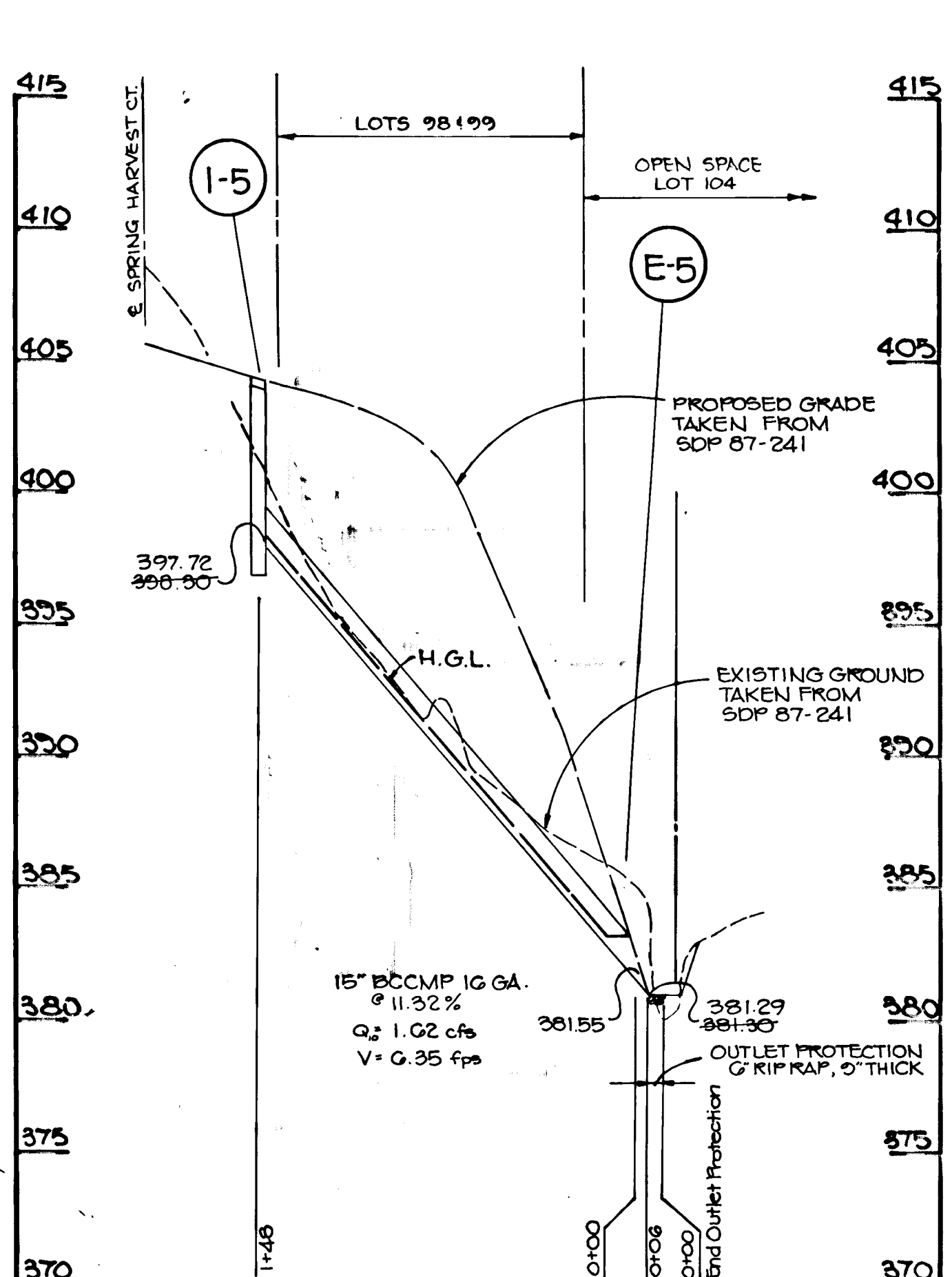
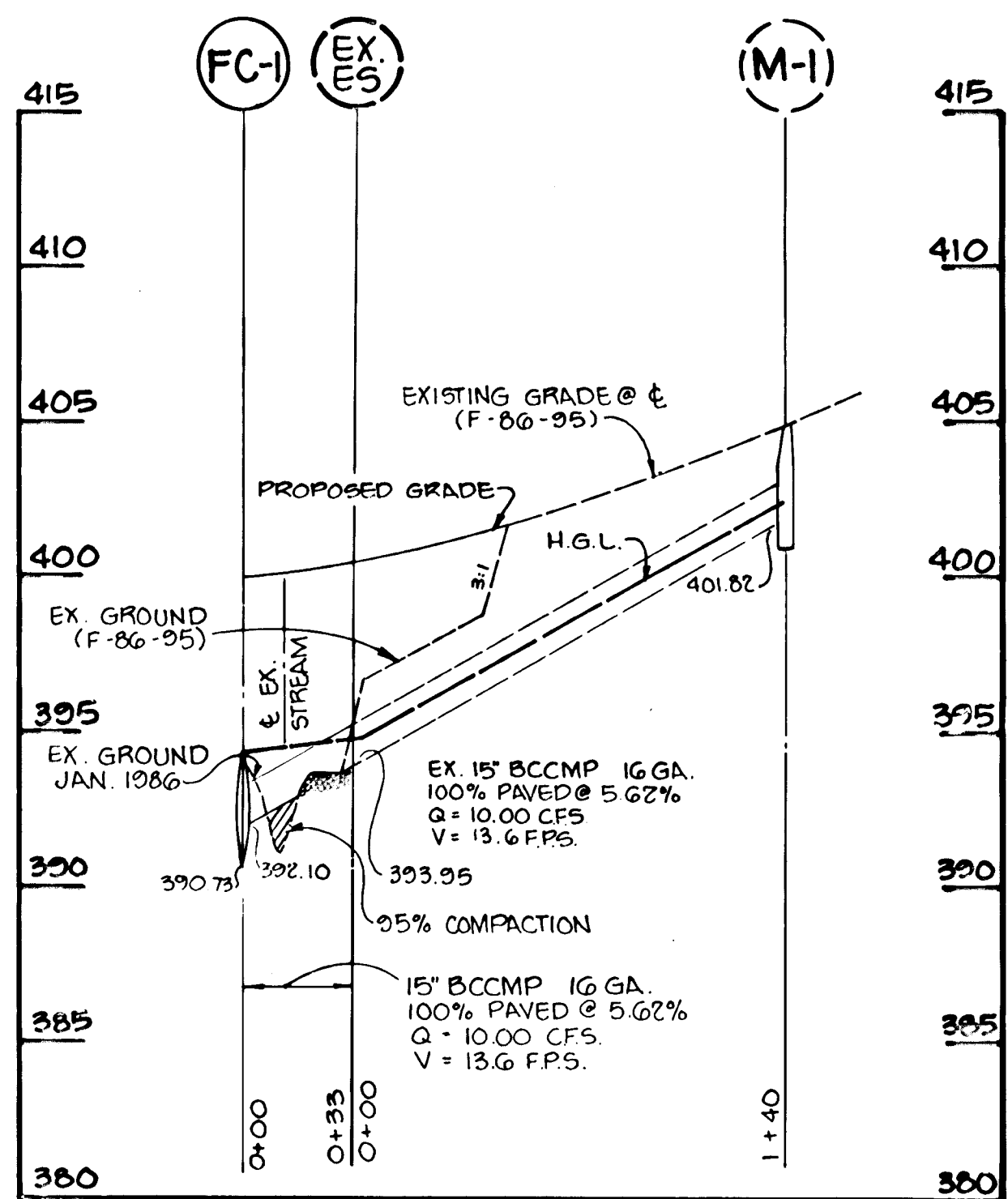
NO. DATE REVISION

TRACY, SCHULTE & ASSOCIATES INC.
planning • architecture • engineering
8450 Baltimore National Pike • Suite 34 • Ellicott City, Maryland 21043 • (301) 465-6105

STATE OF MARYLAND
PROFESSIONAL ENGINEER

OWNER SECURITY DEVELOPMENT CORP. P.O. BOX 417 ELLICOTT CITY, MD. 21043	PROJECT LONG GATE SECTION 1 AREA 3 LOTS 64 THRU 100
DEVELOPER SECURITY DEVELOPMENT CORP. P.O. BOX 417 ELLICOTT CITY, MD. 21043	LOCATION 2 ND ELECTION DISTRICT HOWARD COUNTY, MD. TAX MAP NOS 30+31 ZONING MAP NOS 30+31 PARCEL 16
TITLE PLAN OF AUTUMN HARVEST AND SPRING HARVEST COURT	DATE DEC. 30, 1985 PROJECT NO. 8534 RSD
DES: RJW DRN: CDT/LRC	SCALE: 1"=50' DRAWING 2 OF 7

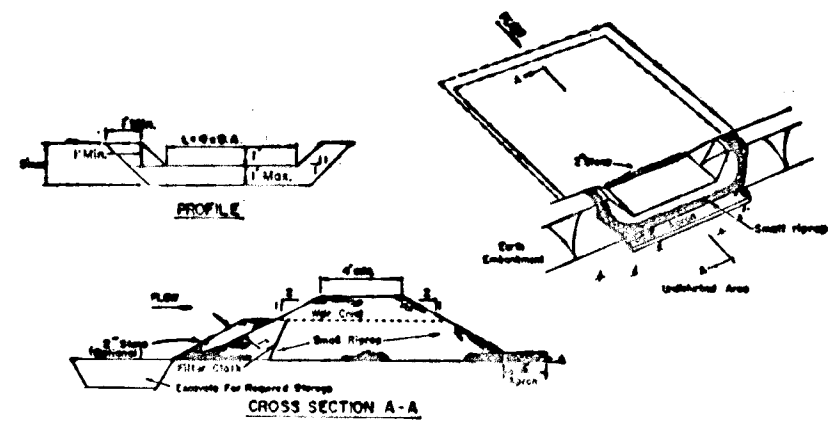
AS-BUILT SURVEY CERTIFIED BY WILLIAM G. RASCH II, MD. P.E. No. 4575, ON 9-16-88



APPROVED: HOWARD COUNTY OFFICE OF PLANNING AND ZONING		7-11-86
CITY ENGINEER, DIVISION OF LAND DEVELOPMENT AND ZONING ADMINISTRATION		DATE
APPROVED: HOWARD COUNTY DEPARTMENT OF PUBLIC WORKS		7-11-86
CHIEF, BUREAU OF ENGINEERING		DATE
10/21/86	CHANGED LIGHTING DETAIL TO COLONIAL MODEL	
NO	DATE	REVISION

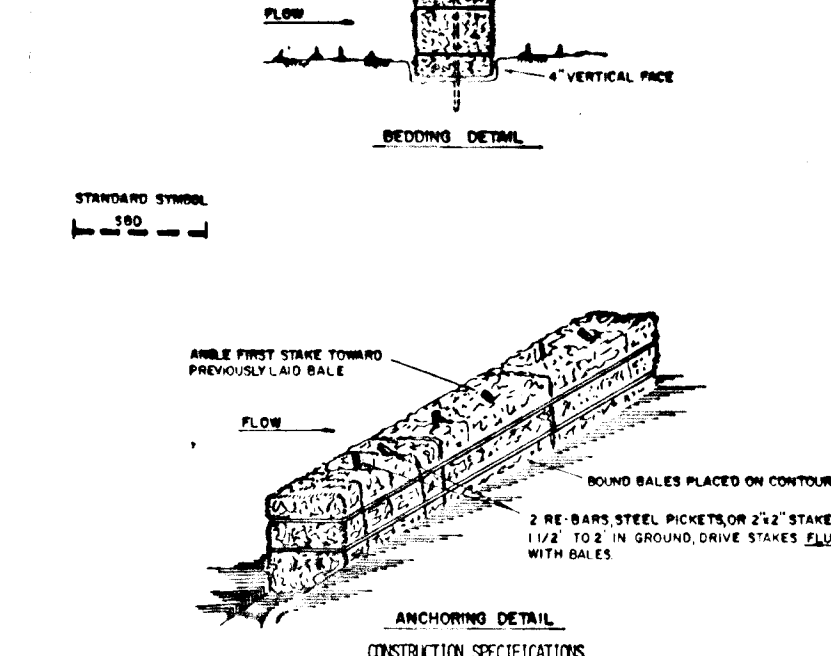
TRACY, SCHULTE & ASSOCIATES INC.
planning • architecture • engineering
8450 Baltimore National Pike • Suite 34 • Ellicott City, Maryland 21043 • (301) 465-6105

OWNER: SECURITY DEVELOPMENT CORP. P.O. BOX 417 ELLICOTT CITY, MD 21043	PROJECT: LONG GATE SECTION ONE AREA THREE LOTS G4 THRU I06 LOCATION TAX MAP NOS 30 & 31 2ND ELECTION DISTRICT HOWARD COUNTY, MARYLAND
DEVELOPER: SECURITY DEVELOPMENT CORP. P.O. BOX 417 ELLICOTT CITY, MD 21043	TITLE: DETAILS, PROFILES AND DRAINAGE AREA MAP
DATE: DEC. 30, 1985	PROJECT NO: 8524 RSD
DATE: DEC. 30, 1985	SCALE: AS SHOWN
DATE: DEC. 30, 1985	DRAWING: 4 OF 7



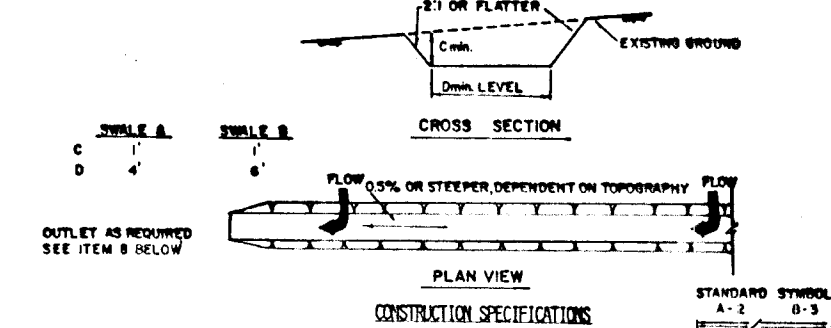
- CONSTRUCTION SPECIFICATIONS FOR BALE**
1. Area under sedimentation shall be cleared, graded and stabilized to meet vegetation and soil loss.
 2. The fill material for the sedimentation shall be free of roots and other woody vegetation as well as gravel, stones, rocks, pebbles, shells or other objectionable material. The sedimentation shall be completed by spreading with sedimentation bales in the following order:
 3. All net and fill layers shall be 211 or flatter.
 4. The stone used in the outlet shall be small river 4" to 6" along with a 1" minimum of 2" aggregate sand on the upstream side and the small 1/2" to 1" aggregate filter cloth in the riprap.
 5. Sediment shall be removed and away returned to its original condition when the outlet has accumulated to 3/4 the design depth of the trap.
 6. The structure shall be inspected after each rain and repairs made as needed.
 7. Construction operation shall be carried out in such a manner that erosion and water pollution is minimized.
 8. The structure shall be removed and the area stabilized when the drainage area has been properly stabilized.

Maximum Drainage Area: 8 Acres
STONE OUTLET SEDIMENT TRAP
NO SCALE



- CONSTRUCTION SPECIFICATIONS**
1. Bales shall be placed at the toe of a slope or on the contour and in a row with ends tightly abutting the adjacent bales.
 2. Each bale shall be oriented in the soil a minimum of 60 degrees and placed so the bindings are horizontal.
 3. Bales shall be securely anchored in place by either two stakes or by being driven through the bale. The first stake in each row shall be driven through the previous row stake as an anchor to force the bales together. Stakes shall be driven flush with the bale.
 4. Inspection shall be performed and repair replacement shall be made promptly as needed.
 5. Bales shall be removed when they have served their usefulness so as not to block or impede storm flow or drainage.

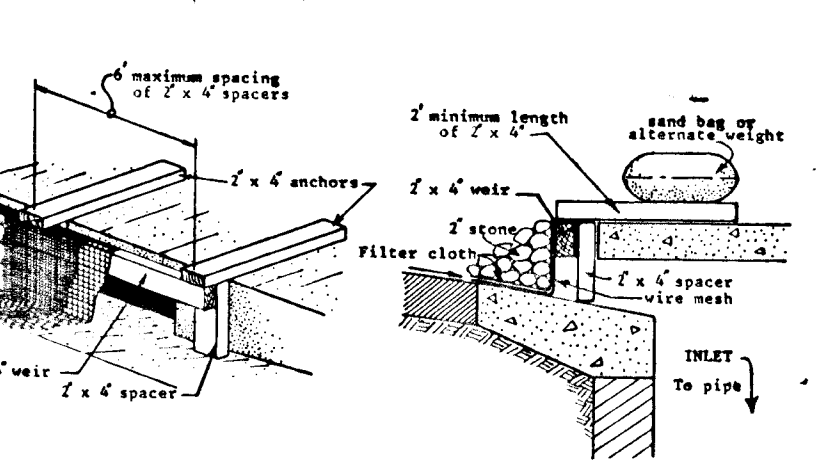
STRAW BALE DIKE
NO SCALE



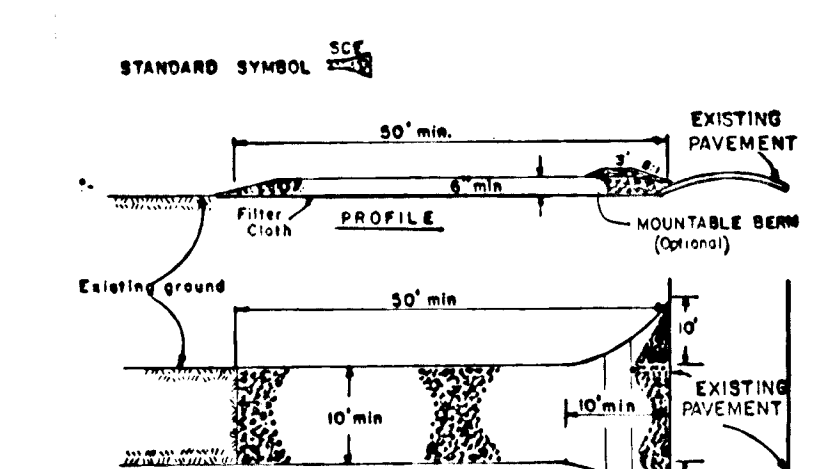
- CONSTRUCTION SPECIFICATIONS**
1. All temporary swales shall have unimpaired positive grade to an outlet.
 2. Diverted runoff from a disturbed area shall be conveyed to a sediment trapping device.
 3. Diverted runoff from an undisturbed area shall be directed into an undisturbed stabilized area at non-erosive velocity.
 4. All trees, shrubs, stumps, obstructions, and other objectionable material shall be removed and disposed of so as not to interfere with the proper functioning of the swale.
 5. The swale shall be excavated or shaped to line, grade, and cross section as required to meet the criteria specified herein and be free of bank protrusions or other irregularities which will impede normal flow.
 6. Fills shall be compacted by earth moving equipment.
 7. All earth removal and net seeding on construction shall be placed so that it will not interfere with the functioning of the swale.
 8. Stabilization shall be as per the chart below:

TYPE OF DISTURBANCE	FLOW CHANNEL STABILIZATION	
	OPTIONAL	MINIMUM
1	0.5-1.00	Seed and Straw Mulch
2	3.15-5.00	Seed and Straw Mulch
3	5.1-8.00	Seed with Lime or Excelsior 500
4	8.1-20.00	Lined Rip-Rap 4" or 6"

TEMPORARY SWALE
NO SCALE

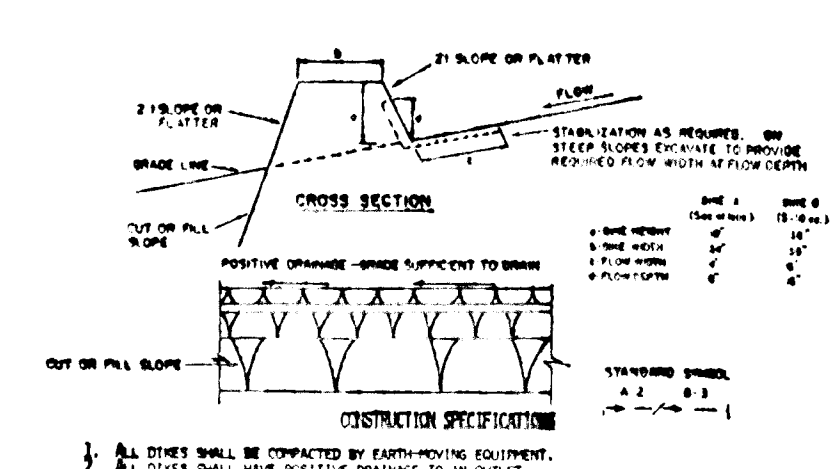


INLET PROTECTION DETAIL
NO SCALE



- CONSTRUCTION SPECIFICATIONS**
1. Stone Size - One 2" stone, or recycled or recycled concrete equivalent.
 2. Length - An equivalent, but not less than 50 feet (except on a single cast-in-place concrete structure where a 30 foot minimum length would apply).
 3. Thickness - Not less than 18 inches.
 4. Width - Ten (10) foot minimum, but not less than the full width at which the ingress or egress occurs.
 5. Filter Cloth - Will be placed over the entire area prior to placing of stone. Filter will not be required on a single family entrance lot.
 6. Surface Water - All surface water flowing or directed toward construction entrance shall be piped across the entrance. If piping is impractical, a removable berm with 3:1 slopes will be provided.
 7. Maintenance - The entrance shall be maintained in a condition which will prevent tracking or flowing of sediment onto public right-of-way. This may require periodic top dressing with additional stone as conditions demand and repair without abatement of any measures used to keep sediment. All sediment applied, dropped, washed or tracked onto public rights-of-way must be removed immediately.
 8. Washing - Washing shall be cleaned to remove sediment prior to entrance onto public right-of-way. When washing is required, it shall be done on an area stabilized with stone and which drains into an approved sediment trapping device.
 9. Periodic inspection and needed maintenance shall be provided after each rain.

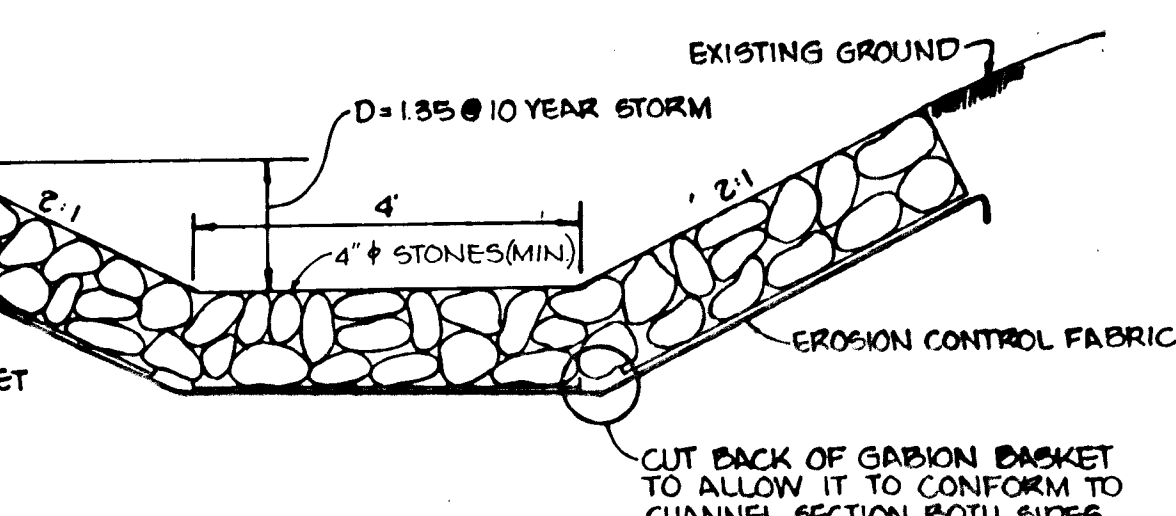
STABILIZED CONSTRUCTION ENTRANCE
NO SCALE



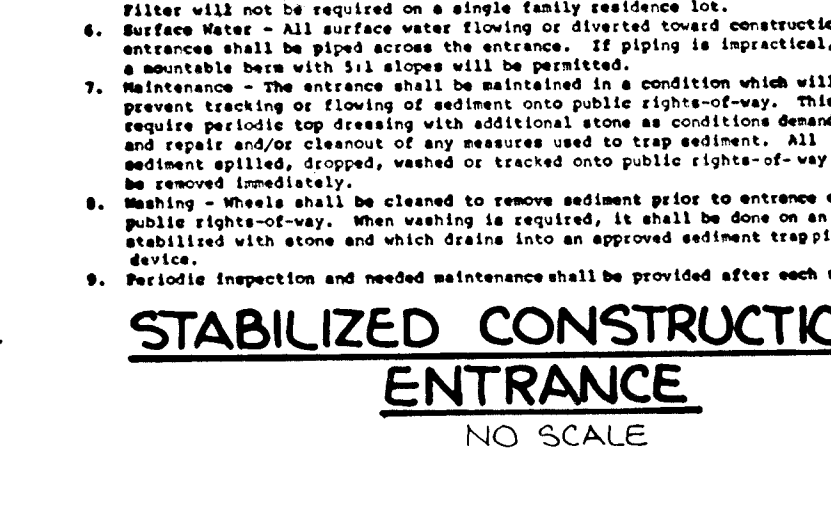
- CONSTRUCTION SPECIFICATIONS**
1. All dikes shall be compacted by earth-moving equipment.
 2. All dikes shall have positive drainage to an outlet.
 3. Top width shall be wider and size shall be as per the chart below.
 4. Field layout in dikes shall be adjusted as needed to utilize a stabilized slope design. Each dike shall have an outlet connection with positive drainage. Each dike shall be placed in a sediment trapping device such as a sediment trap or filter cloth within the dike channel or the drainage area where the dike will be placed.
 5. Sediment shall be removed and away returned to its original condition when the dike has accumulated to 3/4 the design depth of the trap.
 6. The structure shall be inspected after each rain and repairs made as needed.
 7. Construction operation shall be carried out in such a manner that erosion and water pollution is minimized.
 8. The structure shall be removed and the area stabilized when the drainage area has been properly stabilized.

TYPE OF DISTURBANCE	FLOW CHANNEL STABILIZATION	
	OPTIONAL	MINIMUM
1	0.5-1.00	Seed and Straw Mulch
2	3.15-5.00	Seed and Straw Mulch
3	5.1-8.00	Seed with Lime or Excelsior 500
4	8.1-20.00	Lined Rip-Rap 4" or 6"

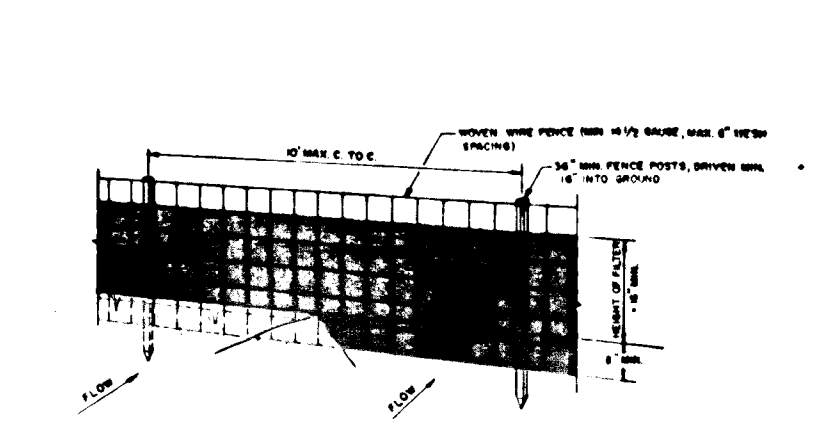
EARTH DIKE
NO SCALE



CHANNEL RELOCATION DETAIL
NO SCALE

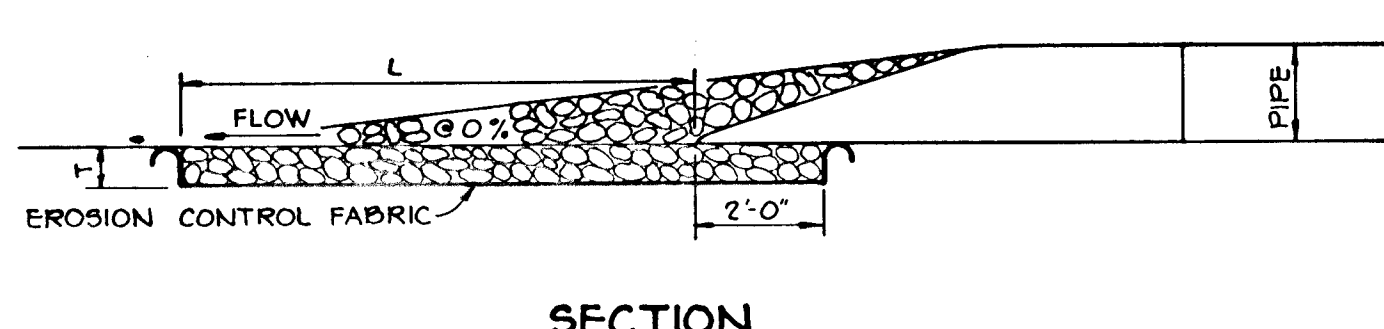


RIPRAP BANK PROTECTION
NO SCALE



- CONSTRUCTION NOTES FOR FILTERED SILTY FENCE**
1. Posts shall be 2" x 4" wood or metal pipe with 1/2" diameter holes.
 2. Filter cloth shall be fastened securely to posts with 1/2" x 1/2" staples every 24" at top and mid section.
 3. Mesh two sections of filter cloth. Section shall overlap and be secured by six inches and folded.
 4. Maintenance shall be performed as needed and material removed when needed to develop in the site fence.

SILTY FENCE
NO SCALE



OUTLET PROTECTION DETAIL
NO SCALE

STRUCTURE	MEDIUM STONE DIA.	LENGTH (L)	WIDTH (W)	THICKNESS (T)
E-1	6"	12'	10'	5"
E-3	6"	11'	12.5'	5"
E-5	6"	6'	7.5'	5"

PERMANENT SEEDING NOTES

SEED PREPARATION: LOOSEN UPPER THREE INCHES OF SOIL BY RAKING, DISCING OR OTHER MEANS PRIOR TO SEEDING.

SOIL AMENDMENTS: IN LIEU OF SOIL TEST RECOMMENDATIONS, USE ONE OF THE FOLLOWING:

1. PREFERRED - APPLY 2 TONS PER ACRE DOMESTIC LIME (92 lbs/1000 sq ft) AND 600 LBS PER ACRE 10-10-10 FERTILIZER (14 lbs/1000 sq ft) BEFORE SEEDING.
2. ACCEPTABLE - APPLY 2 TONS PER ACRE DOMESTIC LIME (92 lbs/1000 sq ft) AND 1000 LBS PER ACRE 10-10-10 FERTILIZER (23 lbs/1000 sq ft) BEFORE SEEDING.
3. DISC - APPLY 15 TO 2 TONS PER ACRE (70 TO 90 lbs/1000 sq ft) OF UNSORTED SMALL CRAY GRAVEL IMMEDIATELY AFTER SEEDING. ANCHOR MULCH IMMEDIATELY AFTER APPLICATION.
4. DISC - APPLY 15 TO 2 TONS PER ACRE (70 TO 90 lbs/1000 sq ft) OF UNSORTED SMALL CRAY GRAVEL IMMEDIATELY AFTER SEEDING. ANCHOR MULCH IMMEDIATELY AFTER APPLICATION.
5. DISC - APPLY 15 TO 2 TONS PER ACRE (70 TO 90 lbs/1000 sq ft) OF UNSORTED SMALL CRAY GRAVEL IMMEDIATELY AFTER SEEDING. ANCHOR MULCH IMMEDIATELY AFTER APPLICATION.
6. DISC - APPLY 15 TO 2 TONS PER ACRE (70 TO 90 lbs/1000 sq ft) OF UNSORTED SMALL CRAY GRAVEL IMMEDIATELY AFTER SEEDING. ANCHOR MULCH IMMEDIATELY AFTER APPLICATION.
7. DISC - APPLY 15 TO 2 TONS PER ACRE (70 TO 90 lbs/1000 sq ft) OF UNSORTED SMALL CRAY GRAVEL IMMEDIATELY AFTER SEEDING. ANCHOR MULCH IMMEDIATELY AFTER APPLICATION.
8. DISC - APPLY 15 TO 2 TONS PER ACRE (70 TO 90 lbs/1000 sq ft) OF UNSORTED SMALL CRAY GRAVEL IMMEDIATELY AFTER SEEDING. ANCHOR MULCH IMMEDIATELY AFTER APPLICATION.
9. DISC - APPLY 15 TO 2 TONS PER ACRE (70 TO 90 lbs/1000 sq ft) OF UNSORTED SMALL CRAY GRAVEL IMMEDIATELY AFTER SEEDING. ANCHOR MULCH IMMEDIATELY AFTER APPLICATION.
10. DISC - APPLY 15 TO 2 TONS PER ACRE (70 TO 90 lbs/1000 sq ft) OF UNSORTED SMALL CRAY GRAVEL IMMEDIATELY AFTER SEEDING. ANCHOR MULCH IMMEDIATELY AFTER APPLICATION.
11. DISC - APPLY 15 TO 2 TONS PER ACRE (70 TO 90 lbs/1000 sq ft) OF UNSORTED SMALL CRAY GRAVEL IMMEDIATELY AFTER SEEDING. ANCHOR MULCH IMMEDIATELY AFTER APPLICATION.
12. DISC - APPLY 15 TO 2 TONS PER ACRE (70 TO 90 lbs/1000 sq ft) OF UNSORTED SMALL CRAY GRAVEL IMMEDIATELY AFTER SEEDING. ANCHOR MULCH IMMEDIATELY AFTER APPLICATION.
13. DISC - APPLY 15 TO 2 TONS PER ACRE (70 TO 90 lbs/1000 sq ft) OF UNSORTED SMALL CRAY GRAVEL IMMEDIATELY AFTER SEEDING. ANCHOR MULCH IMMEDIATELY AFTER APPLICATION.
14. DISC - APPLY 15 TO 2 TONS PER ACRE (70 TO 90 lbs/1000 sq ft) OF UNSORTED SMALL CRAY GRAVEL IMMEDIATELY AFTER SEEDING. ANCHOR MULCH IMMEDIATELY AFTER APPLICATION.
15. DISC - APPLY 15 TO 2 TONS PER ACRE (70 TO 90 lbs/1000 sq ft) OF UNSORTED SMALL CRAY GRAVEL IMMEDIATELY AFTER SEEDING. ANCHOR MULCH IMMEDIATELY AFTER APPLICATION.
16. DISC - APPLY 15 TO 2 TONS PER ACRE (70 TO 90 lbs/1000 sq ft) OF UNSORTED SMALL CRAY GRAVEL IMMEDIATELY AFTER SEEDING. ANCHOR MULCH IMMEDIATELY AFTER APPLICATION.
17. DISC - APPLY 15 TO 2 TONS PER ACRE (70 TO 90 lbs/1000 sq ft) OF UNSORTED SMALL CRAY GRAVEL IMMEDIATELY AFTER SEEDING. ANCHOR MULCH IMMEDIATELY AFTER APPLICATION.
18. DISC - APPLY 15 TO 2 TONS PER ACRE (70 TO 90 lbs/1000 sq ft) OF UNSORTED SMALL CRAY GRAVEL IMMEDIATELY AFTER SEEDING. ANCHOR MULCH IMMEDIATELY AFTER APPLICATION.
19. DISC - APPLY 15 TO 2 TONS PER ACRE (70 TO 90 lbs/1000 sq ft) OF UNSORTED SMALL CRAY GRAVEL IMMEDIATELY AFTER SEEDING. ANCHOR MULCH IMMEDIATELY AFTER APPLICATION.
20. DISC - APPLY 15 TO 2 TONS PER ACRE (70 TO 90 lbs/1000 sq ft) OF UNSORTED SMALL CRAY GRAVEL IMMEDIATELY AFTER SEEDING. ANCHOR MULCH IMMEDIATELY AFTER APPLICATION.
21. DISC - APPLY 15 TO 2 TONS PER ACRE (70 TO 90 lbs/1000 sq ft) OF UNSORTED SMALL CRAY GRAVEL IMMEDIATELY AFTER SEEDING. ANCHOR MULCH IMMEDIATELY AFTER APPLICATION.
22. DISC - APPLY 15 TO 2 TONS PER ACRE (70 TO 90 lbs/1000 sq ft) OF UNSORTED SMALL CRAY GRAVEL IMMEDIATELY AFTER SEEDING. ANCHOR MULCH IMMEDIATELY AFTER APPLICATION.
23. DISC - APPLY 15 TO 2 TONS PER ACRE (70 TO 90 lbs/1000 sq ft) OF UNSORTED SMALL CRAY GRAVEL IMMEDIATELY AFTER SEEDING. ANCHOR MULCH IMMEDIATELY AFTER APPLICATION.
24. DISC - APPLY 15 TO 2 TONS PER ACRE (70 TO 90 lbs/1000 sq ft) OF UNSORTED SMALL CRAY GRAVEL IMMEDIATELY AFTER SEEDING. ANCHOR MULCH IMMEDIATELY AFTER APPLICATION.
25. DISC - APPLY 15 TO 2 TONS PER ACRE (70 TO 90 lbs/1000 sq ft) OF UNSORTED SMALL CRAY GRAVEL IMMEDIATELY AFTER SEEDING. ANCHOR MULCH IMMEDIATELY AFTER APPLICATION.
26. DISC - APPLY 15 TO 2 TONS PER ACRE (70 TO 90 lbs/1000 sq ft) OF UNSORTED SMALL CRAY GRAVEL IMMEDIATELY AFTER SEEDING. ANCHOR MULCH IMMEDIATELY AFTER APPLICATION.
27. DISC - APPLY 15 TO 2 TONS PER ACRE (70 TO 90 lbs/1000 sq ft) OF UNSORTED SMALL CRAY GRAVEL IMMEDIATELY AFTER SEEDING. ANCHOR MULCH IMMEDIATELY AFTER APPLICATION.
28. DISC - APPLY 15 TO 2 TONS PER ACRE (70 TO 90 lbs/1000 sq ft) OF UNSORTED SMALL CRAY GRAVEL IMMEDIATELY AFTER SEEDING. ANCHOR MULCH IMMEDIATELY AFTER APPLICATION.
29. DISC - APPLY 15 TO 2 TONS PER ACRE (70 TO 90 lbs/1000 sq ft) OF UNSORTED SMALL CRAY GRAVEL IMMEDIATELY AFTER SEEDING. ANCHOR MULCH IMMEDIATELY AFTER APPLICATION.
30. DISC - APPLY 15 TO 2 TONS PER ACRE (70 TO 90 lbs/1000 sq ft) OF UNSORTED SMALL CRAY GRAVEL IMMEDIATELY AFTER SEEDING. ANCHOR MULCH IMMEDIATELY AFTER APPLICATION.
31. DISC - APPLY 15 TO 2 TONS PER ACRE (70 TO 90 lbs/1000 sq ft) OF UNSORTED SMALL CRAY GRAVEL IMMEDIATELY AFTER SEEDING. ANCHOR MULCH IMMEDIATELY AFTER APPLICATION.
32. DISC - APPLY 15 TO 2 TONS PER ACRE (70 TO 90 lbs/1000 sq ft) OF UNSORTED SMALL CRAY GRAVEL IMMEDIATELY AFTER SEEDING. ANCHOR MULCH IMMEDIATELY AFTER APPLICATION.
33. DISC - APPLY 15 TO 2 TONS PER ACRE (70 TO 90 lbs/1000 sq ft) OF UNSORTED SMALL CRAY GRAVEL IMMEDIATELY AFTER SEEDING. ANCHOR MULCH IMMEDIATELY AFTER APPLICATION.
34. DISC - APPLY 15 TO 2 TONS PER ACRE (70 TO 90 lbs/1000 sq ft) OF UNSORTED SMALL CRAY GRAVEL IMMEDIATELY AFTER SEEDING. ANCHOR MULCH IMMEDIATELY AFTER APPLICATION.
35. DISC - APPLY 15 TO 2 TONS PER ACRE (70 TO 90 lbs/1000 sq ft) OF UNSORTED SMALL CRAY GRAVEL IMMEDIATELY AFTER SEEDING. ANCHOR MULCH IMMEDIATELY AFTER APPLICATION.
36. DISC - APPLY 15 TO 2 TONS PER ACRE (70 TO 90 lbs/1000 sq ft) OF UNSORTED SMALL CRAY GRAVEL IMMEDIATELY AFTER SEEDING. ANCHOR MULCH IMMEDIATELY AFTER APPLICATION.
37. DISC - APPLY 15 TO 2 TONS PER ACRE (70 TO 90 lbs/1000 sq ft) OF UNSORTED SMALL CRAY GRAVEL IMMEDIATELY AFTER SEEDING. ANCHOR MULCH IMMEDIATELY AFTER APPLICATION.
38. DISC - APPLY 15 TO 2 TONS PER ACRE (70 TO 90 lbs/1000 sq ft) OF UNSORTED SMALL CRAY GRAVEL IMMEDIATELY AFTER SEEDING. ANCHOR MULCH IMMEDIATELY AFTER APPLICATION.
39. DISC - APPLY 15 TO 2 TONS PER ACRE (70 TO 90 lbs/1000 sq ft) OF UNSORTED SMALL CRAY GRAVEL IMMEDIATELY AFTER SEEDING. ANCHOR MULCH IMMEDIATELY AFTER APPLICATION.
40. DISC - APPLY 15 TO 2 TONS PER ACRE (70 TO 90 lbs/1000 sq ft) OF UNSORTED SMALL CRAY GRAVEL IMMEDIATELY AFTER SEEDING. ANCHOR MULCH IMMEDIATELY AFTER APPLICATION.
41. DISC - APPLY 15 TO 2 TONS PER ACRE (70 TO 90 lbs/1000 sq ft) OF UNSORTED SMALL CRAY GRAVEL IMMEDIATELY AFTER SEEDING. ANCHOR MULCH IMMEDIATELY AFTER APPLICATION.
42. DISC - APPLY 15 TO 2 TONS PER ACRE (70 TO 90 lbs/1000 sq ft) OF UNSORTED SMALL CRAY GRAVEL IMMEDIATELY AFTER SEEDING. ANCHOR MULCH IMMEDIATELY AFTER APPLICATION.
43. DISC - APPLY 15 TO 2 TONS PER ACRE (70 TO 90 lbs/1000 sq ft) OF UNSORTED SMALL CRAY GRAVEL IMMEDIATELY AFTER SEEDING. ANCHOR MULCH IMMEDIATELY AFTER APPLICATION.
44. DISC - APPLY 15 TO 2 TONS PER ACRE (70 TO 90 lbs/1000 sq ft) OF UNSORTED SMALL CRAY GRAVEL IMMEDIATELY AFTER SEEDING. ANCHOR MULCH IMMEDIATELY AFTER APPLICATION.
45. DISC - APPLY 15 TO 2 TONS PER ACRE (70 TO 90 lbs/1000 sq ft) OF UNSORTED SMALL CRAY GRAVEL IMMEDIATELY AFTER SEEDING. ANCHOR MULCH IMMEDIATELY AFTER APPLICATION.
46. DISC - APPLY 15 TO 2 TONS PER ACRE (70 TO 90 lbs/1000 sq ft) OF UNSORTED SMALL CRAY GRAVEL IMMEDIATELY AFTER SEEDING. ANCHOR MULCH IMMEDIATELY AFTER APPLICATION.
47. DISC - APPLY 15 TO 2 TONS PER ACRE (70 TO 90 lbs/1000 sq ft) OF UNSORTED SMALL CRAY GRAVEL IMMEDIATELY AFTER SEEDING. ANCHOR MULCH IMMEDIATELY AFTER APPLICATION.
48. DISC - APPLY 15 TO 2 TONS PER ACRE (70 TO 90 lbs/1000 sq ft) OF UNSORTED SMALL CRAY GRAVEL IMMEDIATELY AFTER SEEDING. ANCHOR MULCH IMMEDIATELY AFTER APPLICATION.
49. DISC - APPLY 15 TO 2 TONS PER ACRE (70 TO 90 lbs/1000 sq ft) OF UNSORTED SMALL CRAY GRAVEL IMMEDIATELY AFTER SEEDING. ANCHOR MULCH IMMEDIATELY AFTER APPLICATION.
50. DISC - APPLY 15 TO 2 TONS PER ACRE (70 TO 90 lbs/1000 sq ft) OF UNSORTED SMALL CRAY GRAVEL IMMEDIATELY AFTER SEEDING. ANCHOR MULCH IMMEDIATELY AFTER APPLICATION.
51. DISC - APPLY 15 TO 2 TONS PER ACRE (70 TO 90 lbs/1000 sq ft) OF UNSORTED SMALL CRAY GRAVEL IMMEDIATELY AFTER SEEDING. ANCHOR MULCH IMMEDIATELY AFTER APPLICATION.
52. DISC - APPLY 15 TO 2 TONS PER ACRE (70 TO 90 lbs/1000 sq ft) OF UNSORTED SMALL CRAY GRAVEL IMMEDIATELY AFTER SEEDING. ANCHOR MULCH IMMEDIATELY AFTER APPLICATION.
53. DISC - APPLY 15 TO 2 TONS PER ACRE (70 TO 90 lbs/1000 sq ft) OF UNSORTED SMALL CRAY GRAVEL IMMEDIATELY AFTER SEEDING. ANCHOR MULCH IMMEDIATELY AFTER APPLICATION.
54. DISC - APPLY 15 TO 2 TONS PER ACRE (70 TO 90 lbs/1000 sq ft) OF UNSORTED SMALL CRAY GRAVEL IMMEDIATELY AFTER SEEDING. ANCHOR MULCH IMMEDIATELY AFTER APPLICATION.
55. DISC - APPLY 15 TO 2 TONS PER ACRE (70 TO 90 lbs/1000 sq ft) OF UNSORTED SMALL CRAY GRAVEL IMMEDIATELY AFTER SEEDING. ANCHOR MULCH IMMEDIATELY AFTER APPLICATION.
56. DISC - APPLY 15 TO 2 TONS PER ACRE (70 TO 90 lbs/1000 sq ft) OF UNSORTED SMALL CRAY GRAVEL IMMEDIATELY AFTER SEEDING. ANCHOR MULCH IMMEDIATELY AFTER APPLICATION.
57. DISC - APPLY 15 TO 2 TONS PER ACRE (70 TO 90 lbs/1000 sq ft) OF UNSORTED SMALL CRAY GRAVEL IMMEDIATELY AFTER SEEDING. ANCHOR MULCH IMMEDIATELY AFTER APPLICATION.
58. DISC - APPLY 15 TO 2 TONS PER ACRE (70 TO 90 lbs/1000 sq ft) OF UNSORTED SMALL CRAY GRAVEL IMMEDIATELY AFTER SEEDING. ANCHOR MULCH IMMEDIATELY AFTER APPLICATION.
59. DISC - APPLY 15 TO 2 TONS PER ACRE (70 TO 90 lbs/1000 sq ft) OF UNSORTED SMALL CRAY GRAVEL IMMEDIATELY AFTER SEEDING. ANCHOR MULCH IMMEDIATELY AFTER APPLICATION.
60. DISC - APPLY 15 TO 2 TONS PER ACRE (70 TO 90 lbs/1000 sq ft) OF UNSORTED SMALL CRAY GRAVEL IMMEDIATELY AFTER SEEDING. ANCHOR MULCH IMMEDIATELY AFTER APPLICATION.
61. DISC - APPLY 15 TO 2 TONS PER ACRE (70 TO 90 lbs/1000 sq ft) OF UNSORTED SMALL CRAY GRAVEL IMMEDIATELY AFTER SEEDING. ANCHOR MULCH IMMEDIATELY AFTER APPLICATION.
62. DISC - APPLY 15 TO 2 TONS PER ACRE (70 TO 90 lbs/1000 sq ft) OF UNSORTED SMALL CRAY GRAVEL IMMEDIATELY AFTER SEEDING. ANCHOR MULCH IMMEDIATELY AFTER APPLICATION.
63. DISC - APPLY 15 TO 2 TONS PER ACRE (70 TO 90 lbs/1000 sq ft) OF UNSORTED SMALL CRAY GRAVEL IMMEDIATELY AFTER SEEDING. ANCHOR MULCH IMMEDIATELY AFTER APPLICATION.
64. DISC - APPLY 15 TO 2 TONS PER ACRE (70 TO 90 lbs/1000 sq ft) OF UNSORTED SMALL CRAY GRAVEL IMMEDIATELY AFTER SEEDING. ANCHOR MULCH IMMEDIATELY AFTER APPLICATION.
65. DISC - APPLY 15 TO 2 TONS PER ACRE (70 TO 90 lbs/1000 sq ft) OF UNSORTED SMALL CRAY GRAVEL IMMEDIATELY AFTER SEEDING. ANCHOR MULCH IMMEDIATELY AFTER APPLICATION.
66. DISC - APPLY 15 TO 2 TONS PER ACRE (70 TO 90 lbs/1000 sq ft) OF UNSORTED SMALL CRAY GRAVEL IMMEDIATELY AFTER SEEDING. ANCHOR MULCH IMMEDIATELY AFTER APPLICATION.
67. DISC - APPLY 15 TO 2 TONS PER ACRE (70 TO 90 lbs/1000 sq ft) OF UNSORTED SMALL CRAY GRAVEL IMMEDIATELY AFTER SEEDING. ANCHOR MULCH IMMEDIATELY AFTER APPLICATION.
68. DISC - APPLY 15 TO 2 TONS PER ACRE (70 TO 90 lbs/1000 sq ft) OF UNSORTED SMALL CRAY GRAVEL IMMEDIATELY AFTER SEEDING. ANCHOR MULCH IMMEDIATELY AFTER APPLICATION.
69. DISC - APPLY 15 TO 2 TONS PER ACRE (70 TO 90 lbs/1000 sq ft) OF UNSORTED SMALL CRAY GRAVEL IMMEDIATELY AFTER SEEDING. ANCHOR MULCH IMMEDIATELY AFTER APPLICATION.
70. DISC - APPLY 15 TO 2 TONS PER ACRE (70 TO 90 lbs/1000 sq ft) OF UNSORTED SMALL CRAY GRAVEL IMMEDIATELY AFTER SEEDING. ANCHOR MULCH IMMEDIATELY AFTER APPLICATION.
71. DISC - APPLY 15 TO 2 TONS PER ACRE (70 TO 90 lbs/1000 sq ft) OF UNSORTED SMALL CRAY GRAVEL IMMEDIATELY AFTER SEEDING. ANCHOR MULCH IMMEDIATELY AFTER APPLICATION.
72. DISC - APPLY 15 TO 2 TONS PER ACRE (70 TO 90 lbs/1000 sq ft) OF UNSORTED SMALL CRAY GRAVEL IMMEDIATELY AFTER SEEDING. ANCHOR MULCH IMMEDIATELY AFTER APPLICATION.
73. DISC - APPLY 15 TO 2 TONS PER ACRE (70 TO 90 lbs/1000 sq ft) OF UNSORTED SMALL CRAY GRAVEL IMMEDIATELY AFTER SEEDING. ANCHOR MULCH IMMEDIATELY AFTER APPLICATION.
74. DISC - APPLY 15 TO 2 TONS PER ACRE (70 TO 90 lbs/1000 sq ft) OF UNSORTED SMALL CRAY GRAVEL IMMEDIATELY AFTER SEEDING. ANCHOR MULCH IMMEDIATELY AFTER APPLICATION.
75. DISC - APPLY 15 TO 2 TONS PER ACRE (70 TO 90 lbs/1000 sq ft) OF UNSORTED SMALL CRAY GRAVEL IMMEDIATELY AFTER SEEDING. ANCHOR MULCH IMMEDIATELY AFTER APPLICATION.
76. DISC - APPLY 15 TO 2 TONS PER ACRE (70 TO 90 lbs/1000 sq ft) OF UNSORTED SMALL CRAY GRAVEL IMMEDIATELY AFTER SEEDING. ANCHOR MULCH IMMEDIATELY AFTER APPLICATION.
77. DISC - APPLY 15 TO 2 TONS PER ACRE (70 TO 90 lbs/1000 sq ft) OF UNSORTED SMALL CRAY GRAVEL IMMEDIATELY AFTER SEEDING. ANCHOR MULCH IMMEDIATELY AFTER APPLICATION.
78. DISC - APPLY 15 TO 2 TONS PER ACRE (70 TO 90 lbs/1000 sq ft) OF UNSORTED SMALL CRAY GRAVEL IMMEDIATELY AFTER SEEDING. ANCHOR MULCH IMMEDIATELY AFTER APPLICATION.
79. DISC - APPLY 15 TO 2 TONS PER ACRE (70 TO 90 lbs/1000 sq ft) OF UNSORTED SMALL CRAY GRAVEL IMMEDIATELY AFTER SEEDING. ANCHOR MULCH IMMEDIATELY AFTER APPLICATION.
80. DISC - APPLY 15 TO 2 TONS PER ACRE (70 TO 90 lbs/1000 sq ft) OF UNSORTED SMALL CRAY GRAVEL IMMEDIATELY AFTER SEEDING. ANCHOR MULCH IMMEDIATELY AFTER APPLICATION.
81. DISC - APPLY 15 TO 2 TONS PER ACRE (70 TO 90 lbs/1000 sq ft) OF UNSORTED SMALL CRAY GRAVEL IMMEDIATELY AFTER SEEDING. ANCHOR MULCH IMMEDIATELY AFTER APPLICATION.
82. DISC - APPLY 15 TO 2 TONS PER ACRE (70 TO 90 lbs/1000 sq ft) OF UNSORTED SMALL CRAY GRAVEL IMMEDIATELY AFTER SEEDING. ANCHOR MULCH IMMEDIATELY AFTER APPLICATION.
83. DISC - APPLY 15 TO 2 TONS PER ACRE (70 TO 90 lbs/1000 sq ft) OF UNSORTED SMALL CRAY GRAVEL IMMEDIATELY AFTER SEEDING. ANCHOR MULCH IMMEDIATELY AFTER APPLICATION.
84. DISC - APPLY 15 TO 2 TONS PER ACRE (70 TO 90 lbs/1000 sq ft) OF UNSORTED SMALL CRAY GRAVEL IMMEDIATELY AFTER SEEDING. ANCHOR MULCH IMMEDIATELY AFTER APPLICATION.
85. DISC - APPLY 15 TO 2 TONS PER ACRE (70 TO 90 lbs/1000 sq ft) OF UNSORTED SMALL CRAY GRAVEL IMMEDIATELY AFTER SEEDING. ANCHOR MULCH IMMEDIATELY AFTER APPLICATION.
86. DISC - APPLY 15 TO 2 TONS PER ACRE (70 TO 90 lbs/1000 sq ft) OF UNSORTED SMALL CRAY GRAVEL IMMEDIATELY AFTER SEEDING. ANCHOR MULCH IMMEDIATELY AFTER APPLICATION.
87. DISC - APPLY 15 TO 2 TONS PER ACRE (70 TO 90 lbs/1000 sq ft) OF UNSORTED SMALL CRAY GRAVEL IMMEDIATELY AFTER SEEDING. ANCHOR MULCH IMMEDIATELY AFTER APPLICATION.
88. DISC - APPLY 15 TO 2 TONS PER ACRE (70 TO 90 lbs/1000 sq ft) OF UNSORTED SMALL CRAY GRAVEL IMMEDIATELY AFTER SEEDING. ANCHOR MULCH IMMEDIATELY AFTER APPLICATION.
89. DISC - APPLY 15 TO 2 TONS PER ACRE (70 TO 90 lbs/1000 sq ft) OF UNSORTED SMALL CRAY GRAVEL IMMEDIATELY AFTER SEEDING. ANCHOR MULCH IMMEDIATELY AFTER APPLICATION.
90. DISC - APPLY 15 TO 2 TONS PER ACRE (70 TO 90 lbs/1000 sq ft) OF UNSORTED SMALL CRAY GRAVEL IMMEDIATELY AFTER SEEDING. ANCHOR MULCH IMMEDIATELY AFTER APPLICATION.
91. DISC - APPLY 15 TO 2 TONS PER ACRE (70 TO 90 lbs/1000 sq ft) OF UNSORTED SMALL CRAY GRAVEL IMMEDIATELY AFTER SEEDING. ANCHOR MULCH IMMEDIATELY AFTER APPLICATION.
92. DISC - APPLY 15 TO 2 TONS PER ACRE (70 TO 90 lbs/1000 sq ft) OF UNSORTED SMALL CRAY GRAVEL IMMEDIATELY AFTER SEEDING. ANCHOR MULCH IMMEDIATELY AFTER APPLICATION.
93. DISC - APPLY 15 TO 2 TONS PER ACRE (70 TO 90 lbs/1000 sq ft) OF UNSORTED SMALL CRAY GRAVEL IMMEDIATELY AFTER SEEDING. ANCHOR MULCH IMMEDIATELY AFTER APPLICATION.
94. DISC - APPLY 15 TO 2 TONS PER ACRE (70 TO 90 lbs/1000 sq ft) OF UNSORTED SMALL CRAY GRAVEL IMMEDIATELY AFTER SEEDING. ANCHOR MULCH IMMEDIATELY AFTER APPLICATION.
95. DISC - APPLY 15 TO 2 TONS PER ACRE (70 TO 90 lbs/1000 sq ft) OF UNSORTED SMALL CRAY GRAVEL IMMEDIATELY AFTER SEEDING. ANCHOR MULCH IMMEDIATELY AFTER APPLICATION.
96. DISC - APPLY 15 TO 2 TONS PER ACRE (70 TO 90 lbs/1000 sq ft) OF UNSORTED SMALL CRAY GRAVEL IMMEDIATELY AFTER SEEDING. ANCHOR MULCH IMMEDIATELY AFTER APPLICATION.
97. DISC - APPLY 15 TO 2 TONS PER ACRE (70 TO 90 lbs/1000 sq ft) OF UNSORTED SMALL CRAY GRAVEL IMMEDIATELY AFTER SEEDING. ANCHOR MULCH IMMEDIATELY AFTER APPLICATION.
98. DISC - APPLY 15 TO 2 TONS PER ACRE (70 TO 90 lbs/1000 sq ft) OF UNSORTED SMALL CRAY GRAVEL IMMEDIATELY AFTER SEEDING. ANCHOR MULCH IMMEDIATELY AFTER APPLICATION.
99. DISC - APPLY 15 TO 2 TONS PER ACRE (70 TO 90 lbs/1000 sq ft) OF UNSORTED SMALL CRAY GRAVEL IMMEDIATELY AFTER SEEDING. ANCHOR MULCH IMMEDIATELY AFTER APPLICATION.
100. DISC - APPLY 15 TO 2 TONS PER ACRE (70 TO 90 lbs/1000 sq ft) OF UNSORTED SMALL CRAY GRAVEL IMMEDIATELY AFTER SEEDING. ANCHOR MULCH IMMEDIATELY AFTER APPLICATION.

SEQUENCE OF CONSTRUCTION

DATE	ACTIVITY
DAY 1	1. OBTAIN A GRADING PERMIT.
DAY 2-3	2. CLEAR AND GRUB AREA FOR AND INSTALL STABILIZED CONSTRUCTION ENTRANCE (SCE)
DAY 3-7	3. CLEAR AND GRUB REMAINING AREAS FOR SEDIMENT CONTROL DEVICE INSTALLATION.
DAY 7-9	4. INSTALL SEDIMENT TRAPS 1 AND 2 AND STABILIZE IN ACCORDANCE WITH TEMPORARY SEEDING NOTES.
DAY 9-13	5. INSTALL REMAINDER OF SEDIMENT CONTROL DEVICES AND STABILIZE IN ACCORDANCE WITH TEMPORARY SEEDING NOTES.
DAY 13-22	6. CLEAR AND GRUB REMAINDER OF SITE.
DAY 22-29	7. INSTALL TEMPORARY ACCESS CULVERT ON UPSTREAM SIDE OF CONSTRUCTION AREA AND INSTALL 48" BCCMP.
DAY 29-49	8. GRADE SITE.
DAY 49-84	9. INSTALL UTILITIES (WATER, SEWER, AND STORM DRAINS) BLOCKING ALL INLETS AS PER INLET PROTECTION DETAIL.
DAY 84-87	10. STABILIZE ALL SLOPES IN ACCORDANCE WITH PERMANENT SEEDING NOTES.
DAY 87-108	11. COMPLETE ALL ROADWAY CONSTRUCTION AND STABILIZE ALL DISTURBED AREAS IN ACCORDANCE WITH PERMANENT SEEDING NOTES.
DAY 108-117	12. UPON APPROVAL OF SEDIMENT CONTROL INSPECTOR, REMOVE ALL SEDIMENT CONTROL DEVICES AND STABILIZE IN ACCORDANCE WITH PERMANENT SEEDING NOTES.

BY THE ENGINEER:
"I CERTIFY THAT THIS PLAN FOR EROSION AND SEDIMENT CONTROL REPRESENTS A PRACTICAL AND WORKABLE PLAN BASED ON MY PERSONAL KNOWLEDGE OF THE SITE CONDITIONS AND THAT IT WAS PREPARED IN ACCORDANCE WITH THE REQUIREMENTS OF THE HOWARD SOIL CONSERVATION DISTRICT."
James K. Tracy
JAMES K. TRACY, P.E. 9566 7-3-86 DATE

BY THE DEVELOPER:
"I/WE CERTIFY THAT ALL DEVELOPMENT AND CONSTRUCTION WILL BE DONE ACCORDING TO THIS PLAN, AND THAT ANY RESPONSIBLE PERSONNEL INVOLVED IN THE CONSTRUCTION PROJECT WILL HAVE A CERTIFICATE OF ATTENDANCE AT A DEPARTMENT OF NATURAL RESOURCES APPROVED TRAINING PROGRAM FOR THE CONTROL OF SEDIMENT AND EROSION BEFORE BEGINNING THE PROJECT."
James R. Moxley
DEVELOPER: JAMES R. MOXLEY, SECURITY DEVELOPMENT CORP. PRES. 7-3-86 DATE

THIS DEVELOPMENT IS APPROVED FOR SOIL EROSION AND SEDIMENT CONTROL BY THE HOWARD SOIL CONSERVATION DISTRICT
Stephen L. Hulse
HOWARD S.C.D. 7-10-86 DATE

REVIEWED FOR: *Howard* S.C.D.
AND MEETS TECHNICAL REQUIREMENTS

U.S. SOIL CONSERVATION SERVICE 7-10-86 DATE

APPROVED: HOWARD COUNTY DEPARTMENT OF PUBLIC WORKS
William B. Riey
CHIEF, BUREAU OF ENGINEERING 7-10-86 DATE

APPROVED: HOWARD COUNTY DEPARTMENT OF PLANNING AND ZONING
John W. Warkman
CHIEF, DIVISION OF LAND DEVELOPMENT AND ZONING ADMINISTRATION 7-11-86 DATE

NO	DATE	REVISION

TRACY, SCHULTE & ASSOCIATES INC.
planning • architecture • engineering
8450 Baltimore National Pike • Suite 34 • Ellicott City, Maryland 21043 • (301) 465-6105

OWNER SECURITY DEVELOPMENT CORP. P.O
--

LONG GATE SECTION 1 AREA 1
OPEN SPACE LOT # 9
EX S.W.M.F.
F-84-135

LONG GATE SECTION 1 AREA 2
OPEN SPACE LOT # 60
EX S.W.M.F.
F-86-

LONG GATE SECTION 1 AREA 2
WHEATFIELD

EX STREET TREES BY OTHERS UNDER F-84-135

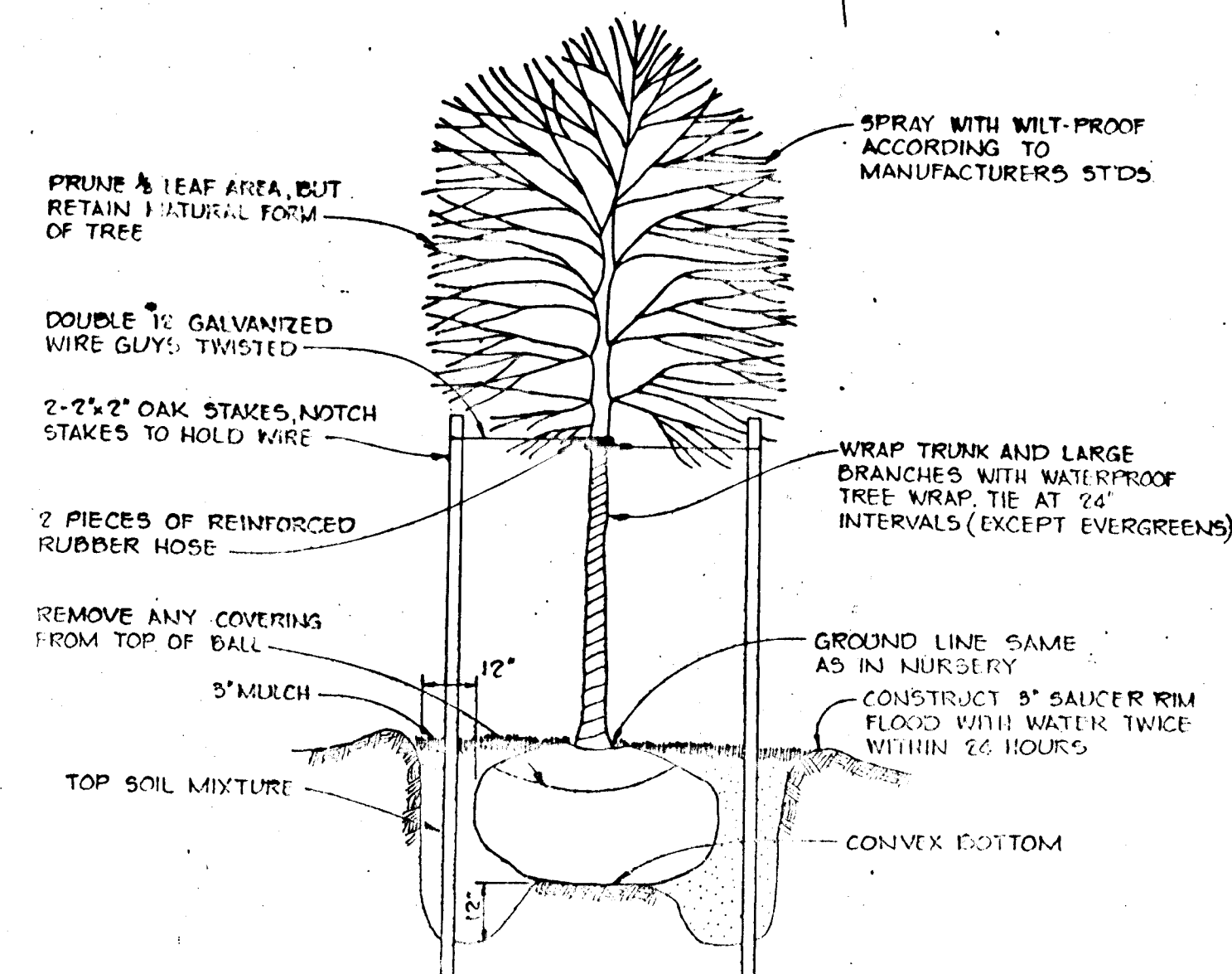
BRAMPTON HILLS SECTION 2 AREA 1
F-83-25

MEADOWBROOK INVESTMENT
842 / 014

1853.000E
319.500N

1894.000E
513.500N

PLAN
SCALE: 1"=50'



TREE PLANTING DETAIL

PLANT LIST			
SYMBOL	QUANTITY	NAME	REMARKS
○	23	ACER RUBRUM Red Maple	2 1/2 Min Cal. B+B
	7	QUERCUS PALUSTRIS Pin Oak	Full Head
	3	GLEDITSIA TRIACANTHOS INERMIS Honey Locust	
TOTAL	33		

LENGTH OF PROPOSED ROADS = 1007 LF + 40 = 25.2
LENGTH OF LINEAR PROFILES = 551 + 80 = 69
TOTAL REQUIRED 52.1
TOTAL PROVIDED 53

FEB. 22, 1986	1-BLOCK	AS PER ENGINEERING COMMENTS	FEBRUARY 9, 1986
REV. DATE	REV. NO.	REVISION	DESCRIPTION
APPROVED: HOWARD COUNTY DEPARTMENT OF PUBLIC WORKS			
 CHIEF, BUREAU OF ENGINEERING			7-18-86 DATE
APPROVED: HOWARD COUNTY OFFICE OF PLANNING AND ZONING			
 CHIEF, DIVISION OF LAND DEVELOPMENT AND ZONING ADMINISTRATION			7-11-86 DATE
NO	DATE	REVISION	

TRACY, SCHULTE & ASSOCIATES INC.
planning • architecture • engineering
8450 Baltimore National Pike • Suite 34 • Ellicott City, Maryland 21043 • (301) 465 6105

OWNER SECURITY DEVELOPMENT CORP PO BOX 417 ELLICOTT CITY, MD 21043	PROJECT LONG GATE SECTION 1 AREA 2 LOTS 64 THRU 106
DEVELOPER SECURITY DEVELOPMENT CORP PO BOX 417 ELLICOTT CITY, MD 21043	LOCATION 2 ND ELECTION DISTRICT HOWARD COUNTY, MD. TAX MAP NOS 30+31 ZONING MAP NOS 30+31 PARCEL 1B
TITLE STREET TREE PLAN	DATE DEC. 30, 1985 PROJECT NO 8534 R5D
DES RJW DRN CDT	SCALE: 1"=50' DRAWING 7 OF 7

1162