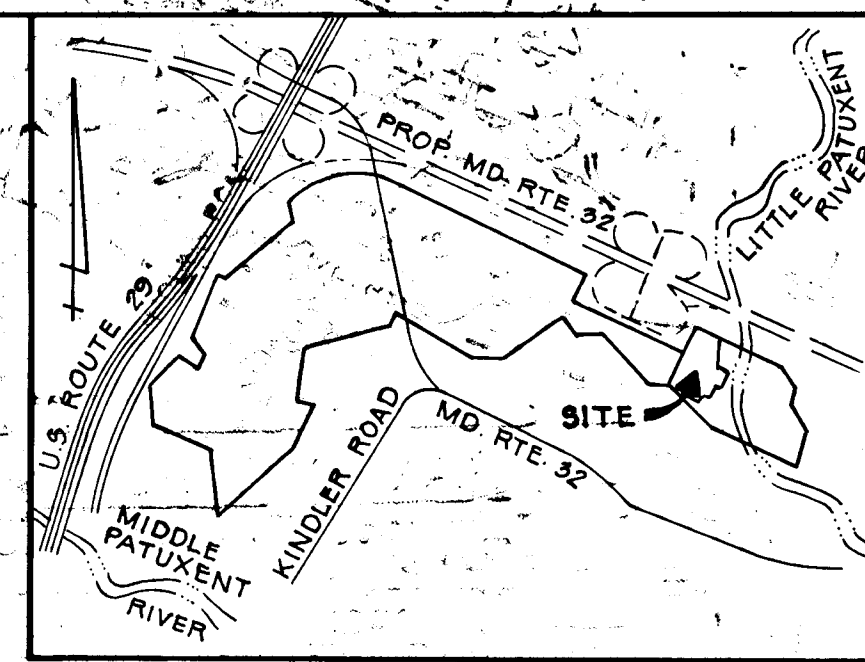


STRUCTURE SCHEDULE

NO	TYPE	TOP ELEV.	INV. IN	INV. OUT	LOCATION	DESCRIPTION
I-1	A-5	292.93	293.12	293.12	Q STA 1+60 10' LT.	HOWARD CO. SD 4.01
I-2	A-5	292.30	293.08	292.88	L.P. STA. 2+275	HOWARD CO. SD 4.01
I-3	A-5 w/Defl.	294.0	289.20	289.70	SEE PLAN	HOWARD CO. SD 4.01
I-4	"K" INLET/GRATE	290.5	283.63	283.43	"	HOWARD CO. SD 4.12
S-1	CONC. END SECT.	285.0	282.74		"	HOWARD CO. SD 5.52

CERTIFICATE BY THE DEVELOPER:
 I/WE CERTIFY THAT ALL DEVELOPMENT AND CONSTRUCTION WILL BE DONE ACCORDING TO THIS PLAN OF DEVELOPMENT AND PLAN FOR EROSION AND SEDIMENT CONTROL AND THAT ALL RESPONSIBLE PERSONNEL INVOLVED IN THE CONSTRUCTION PROJECT WILL HAVE A CERTIFICATE OF ATTENDANCE AT A DEPT. OF NATURAL RESOURCES APPROVED TRAINING PROGRAM FOR THE CONTROL OF SEDIMENT AND EROSION BEFORE BEGINNING THE PROJECT. I ALSO AUTHORIZE PERIODIC ON SITE INSPECTIONS BY THE HOWARD SOIL CONSERVATION DISTRICT OR THEIR AUTHORIZED AGENTS, AS ARE DEEMED NECESSARY.

John H. N. [Signature] 12-13-83
 DATE



VICINITY MAP
 SCALE: 1" = 2000'

THESE PLANS HAVE BEEN REVIEWED FOR THE HOWARD SOIL CONSERVATION DISTRICT AND MEET THE TECHNICAL REQUIREMENTS FOR SOIL EROSION AND SEDIMENT CONTROL.

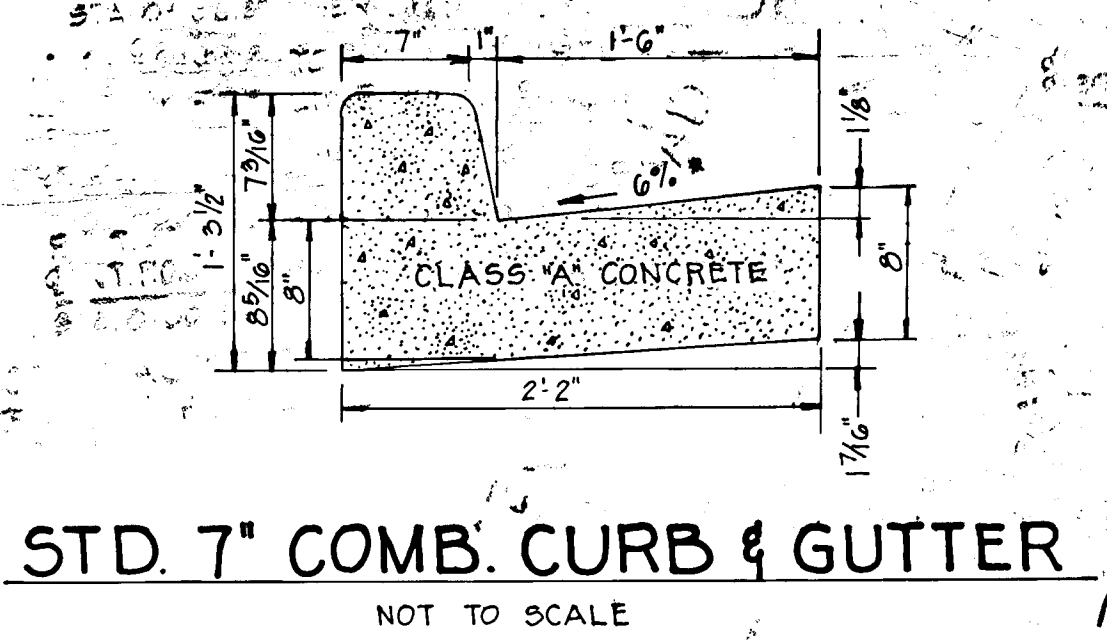
[Signature] 12-15-83
 U.S. Soil Conservation Service Date

Date	No	Revision Description
6-15-84	1	CHANGE ROAD PROFILE & STRUCT. SCHD.

RIVERS CORPORATE PARK
 SECTION 1, AREA 1
 6TH ELECTION DISTRICT HOWARD COUNTY, MD.

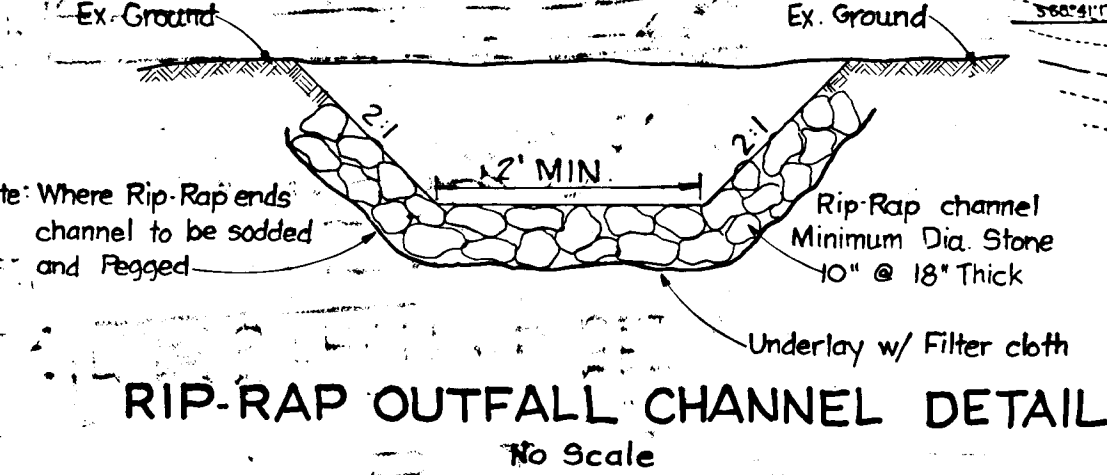
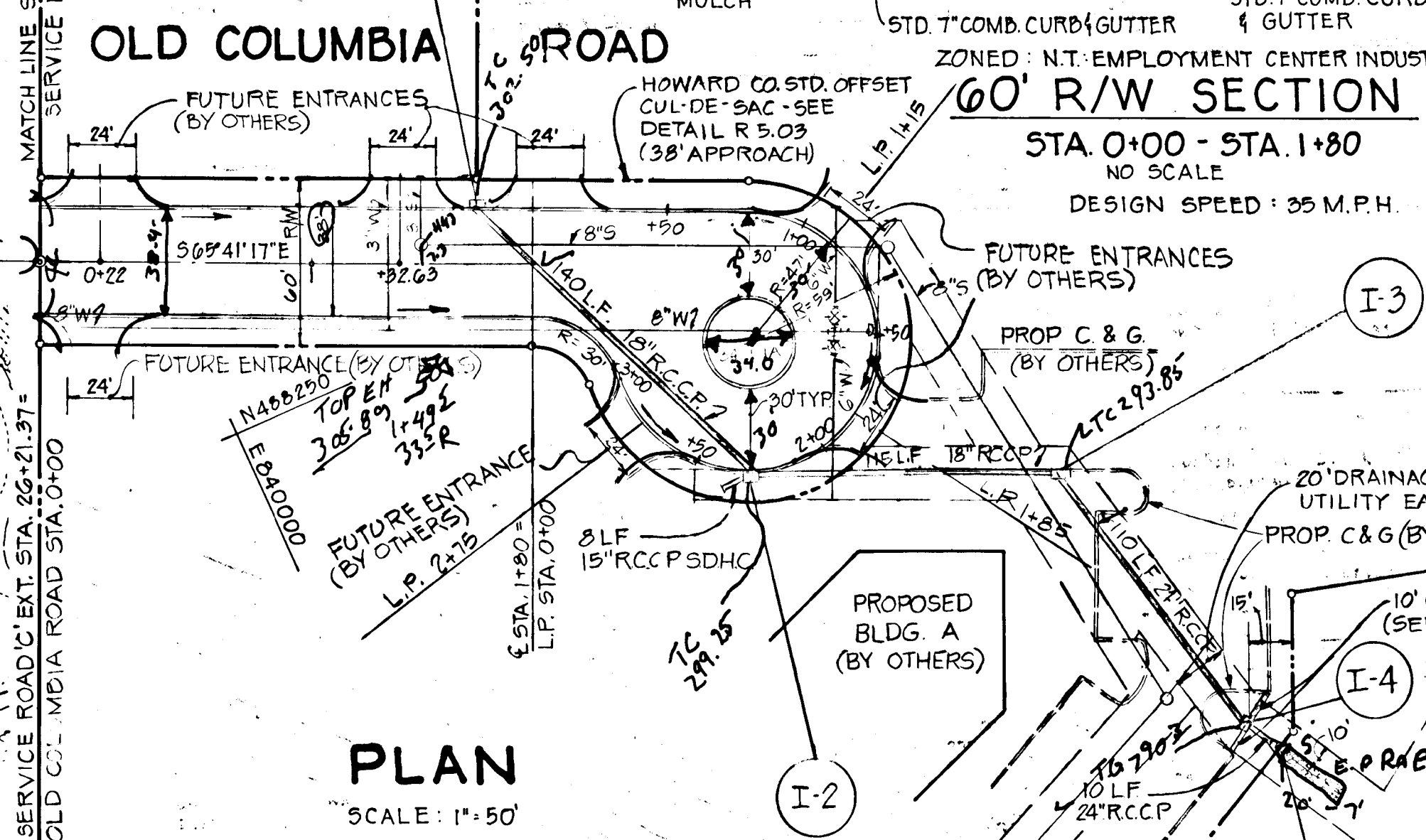
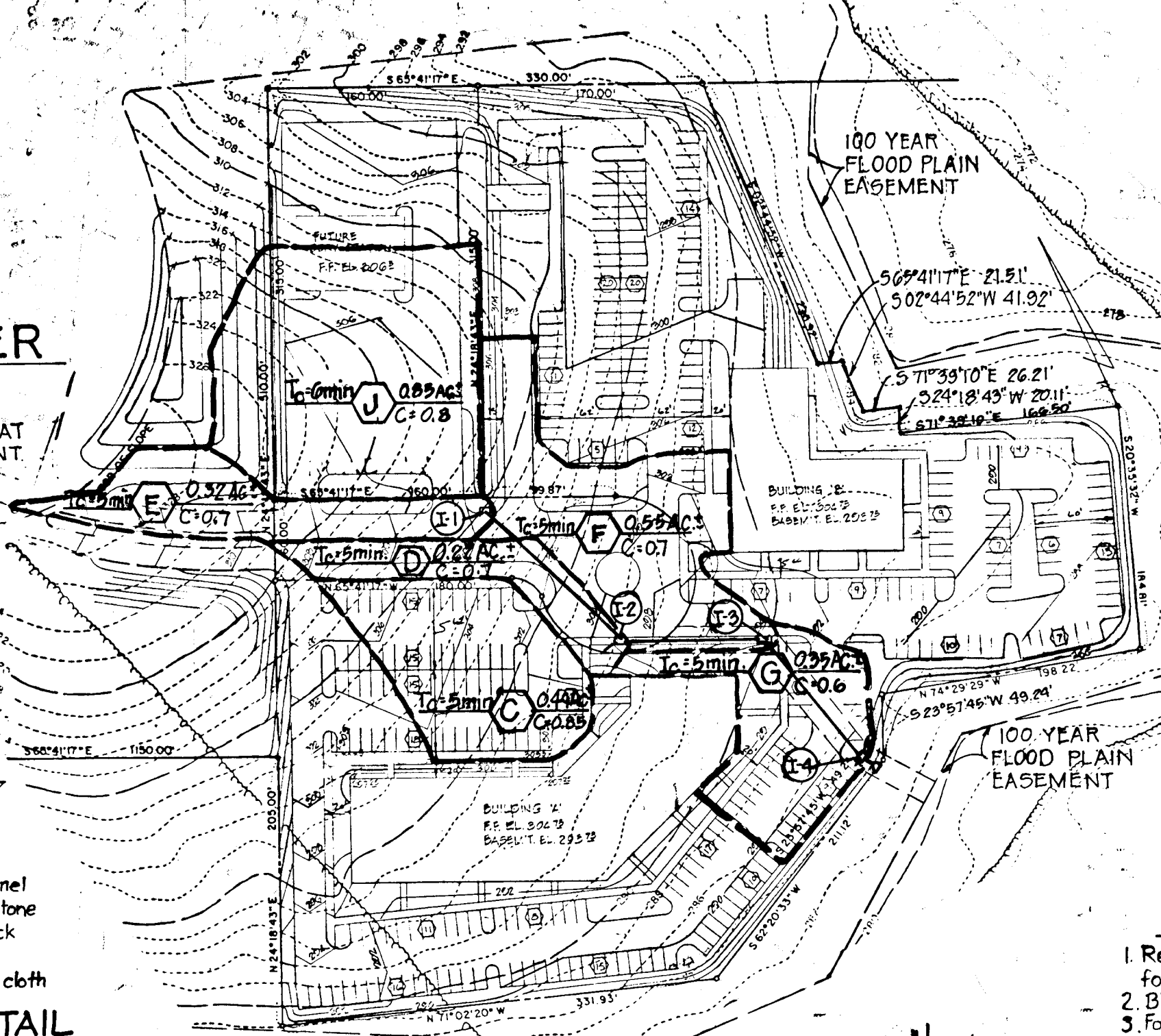
Owner and Developer
 THE HOWARD RESEARCH AND DEVELOPMENT CORPORATION
 THE ROUSE COMPANY
 Columbia, Maryland

CONSULTING ENGINEERS - PLANNERS
 TOWSON, MARYLAND 21204

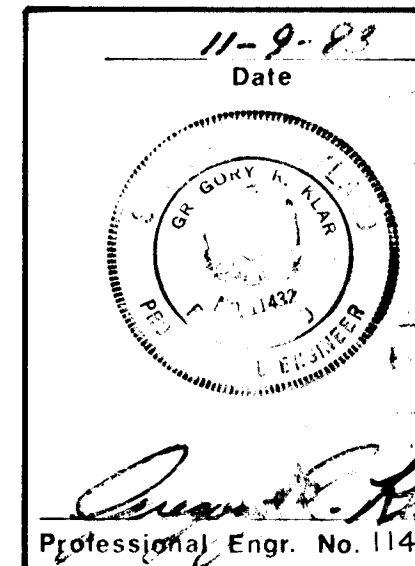


* GUTTER PAN AT THE MEDIAN EDGE SHALL BE SLOPED AT THE SAME RATE AND THE SAME DIRECTION AS THE PAVEMENT.

ROAD 'C' EXTENSION (SEE SHEET 10F2)



Sediment Control
 1. Refer to Grading Plan GP 84-32 for additional information.
 2. Block all inlets per Grading Plan detail.
 3. For stabilization notes, see Grading Plan.



Des By J.A.G. Scale 1"=50' Proj No. 1174
 Dwn By J.A.G. Date 11-4-83
 Chk By G.R.K. Approved

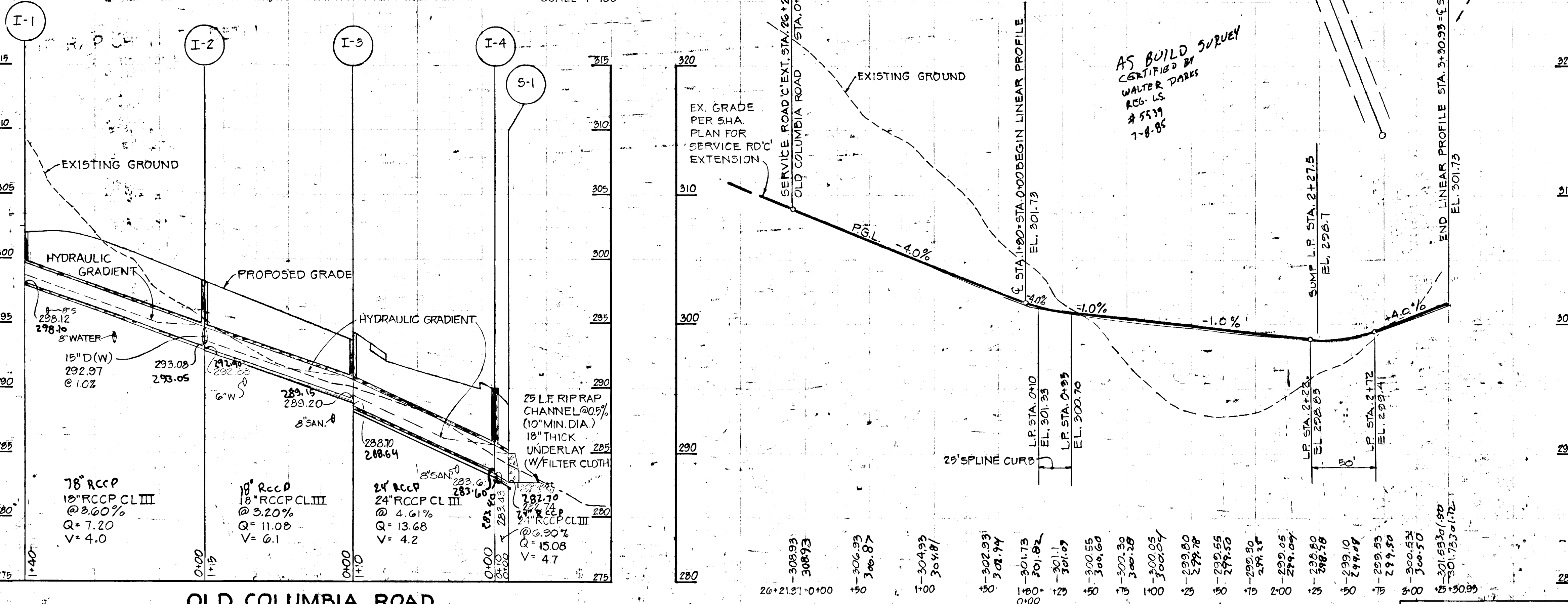
GENERAL NOTES

- ALL WORK SHALL BE PERFORMED IN ACCORDANCE WITH THE HOWARD COUNTY DESIGN MANUAL - VOLUME IX "STANDARD DETAILS AND SPECIFICATIONS FOR CONSTRUCTION".
- APPROXIMATE LOCATION OF EXISTING UTILITIES ARE SHOWN. THE CONTRACTOR SHALL TAKE ALL NECESSARY PRECAUTIONS TO PROTECT THE EXISTING UTILITIES AND MAINTAIN UNINTERRUPTED SERVICE. ANY DAMAGE INCURRED DUE TO CONTRACTOR'S OPERATION SHALL BE REPAIRED IMMEDIATELY AT THE CONTRACTOR'S EXPENSE.
- THE CONTRACTOR SHALL TEST PIT EXISTING UTILITIES, WHERE DIRECTED BY THE ENGINEER, A MINIMUM OF TWO WEEKS IN ADVANCE OF CONSTRUCTION OPERATIONS.
- CONTRACTOR TO NOTIFY THE FOLLOWING UTILITIES AT LEAST THREE DAYS BEFORE STARTING WORK SHOWN ON THIS THESE DRAWINGS:
 STATE HIGHWAY ADMINISTRATION
 BALTIMORE GAS AND ELECTRIC CO.
 (Underground Gas Distribution)
 Customer Service
 ENGINEERING "DAMAGE CONTROL"
 "MISS UTILITY"
 CHESAPEAKE AND POTOMAC (C&P)
 TELEPHONE COMPANY
 AMERICAN TELEPHONE AND TELEGRAPH
 Cable Location Division
 COLONIAL PIPELINE COMPANY
 BUREAU OF UTILITIES HOWARD COUNTY
- ALL INLETS SHALL BE CONSTRUCTED IN ACCORDANCE WITH HOWARD COUNTY STDS., UNLESS OTHERWISE SHOWN.
- STORM DRAIN TRENCHES WITHIN ROAD RIGHT-OF-WAY SHALL BE BACKFILLED AND COMPACTED IN ACCORDANCE WITH HOWARD COUNTY ROAD CODE.
- INSTALLATION OF TRAFFIC CONTROL DEVICES, MARKING AND SIGNING SHALL BE IN ACCORDANCE WITH THE MANUAL OF UNIFORM TRAFFIC CONTROL DEVICES 1971 REVISED EDITION.
- DESIGNED TRAFFIC SPEED IN ACCORDANCE WITH THE AMERICAN ASSOCIATION OF STATE HIGHWAY OFFICIAL STANDARDS.
- ALL ELEVATIONS SHOWN ARE BASED ON U.S.C. AND G.S. MEAN SEA LEVEL DATUM 1929.
- SEDIMENT CONTROL SHALL BE AS SHOWN ON GP 84-32. SEDIMENT CONTROL MEASURES ARE TO BE MAINTAINED IN A FUNCTIONING CONDITION. ADDITIONAL SEDIMENT CONTROL MAY BE REQUIRED BY INSPECTOR IN FIELD.

CERTIFICATE OF THE ENGINEER:
 I CERTIFY THAT THIS PLAN FOR EROSION AND SEDIMENT CONTROL REPRESENTS A PRACTICAL AND WORKABLE PLAN BASED ON MY PERSONAL KNOWLEDGE OF THE SITE CONDITIONS AND THAT IT WAS PREPARED IN ACCORDANCE WITH THE REQUIREMENTS OF THE HOWARD SOIL CONSERVATION DISTRICT.

Gregory R. Klar 11/9/83
 GREGORY R. KLAR DATE

THESE PLANS FOR SOIL EROSION AND SEDIMENT CONTROL MEET THE REQUIREMENTS OF THE HOWARD SOIL CONSERVATION DISTRICT.
[Signature] 12-13-83
 HOWARD SOIL CONSERVATION DIST. DATE

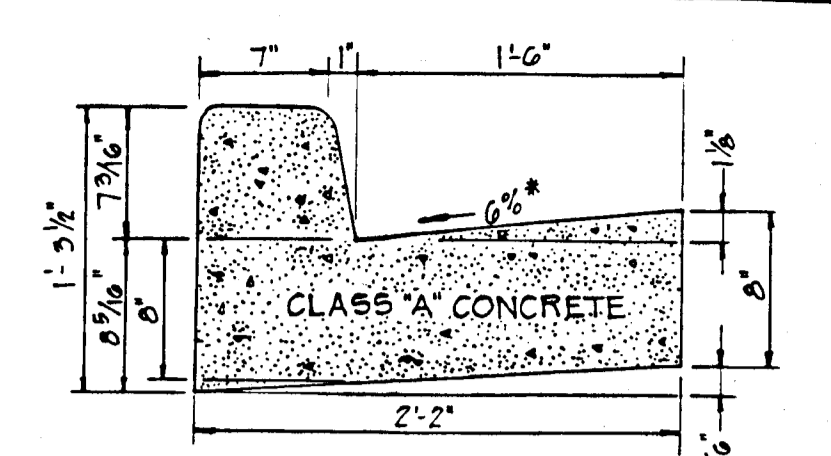
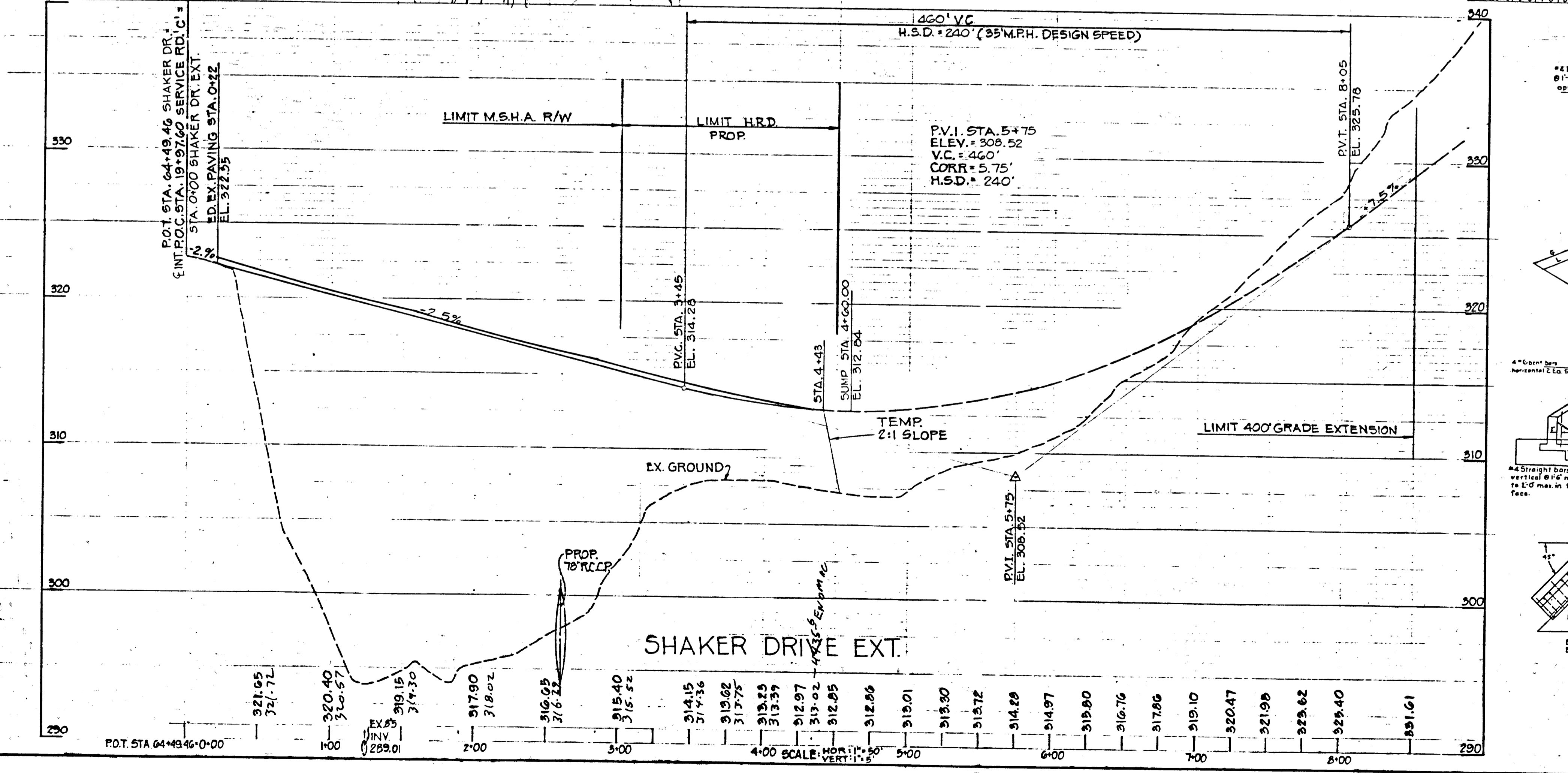
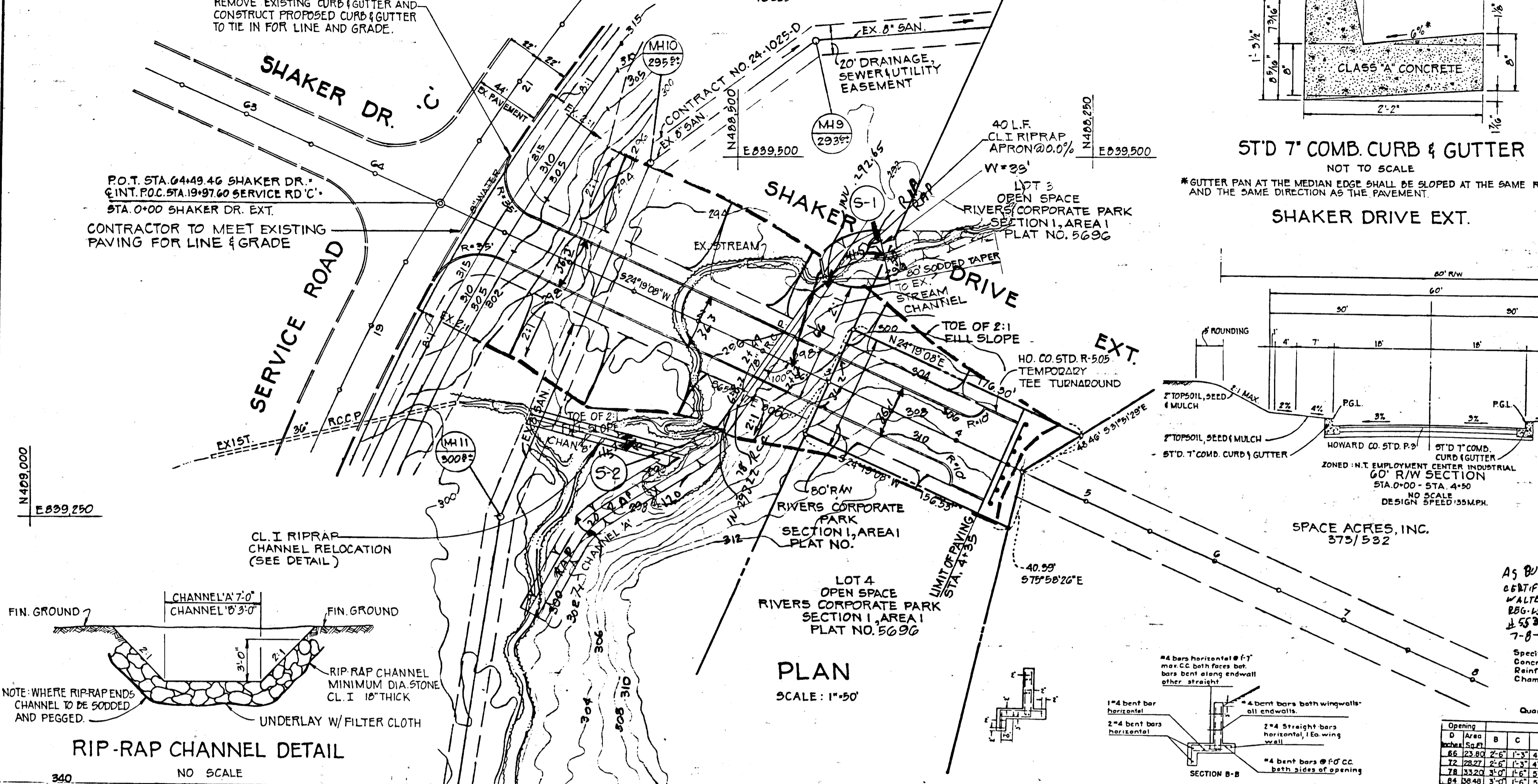


OLD COLUMBIA ROAD
 PROFILE SCALE: HOR. 1" = 50' VERT. 1" = 5'

DEPARTMENT OF PUBLIC WORKS <i>[Signature]</i> Chief, Bureau of Engineering Date 12-14-83	DEPARTMENT OF PLANNING AND ZONING <i>[Signature]</i> Chief, Div. of Land Develop and Zoning Admin. Date 12-11-83
---	---

NO.	TYPE	TOP ELEV.	INV. IN	INV. OUT	LOCATION	DESCRIPTION
5-1	MD STD. 6" HDWL		292.7		STA. 2+72.66 LT.	MD. 352.02
5-2	MD STD. 6" HDWL		295.2		STA. 2+47.63 RT.	MD. 352.02

STATE HIGHWAY ADMINISTRATION
100815
S.H.A. PLAT NO. 46022,
46023

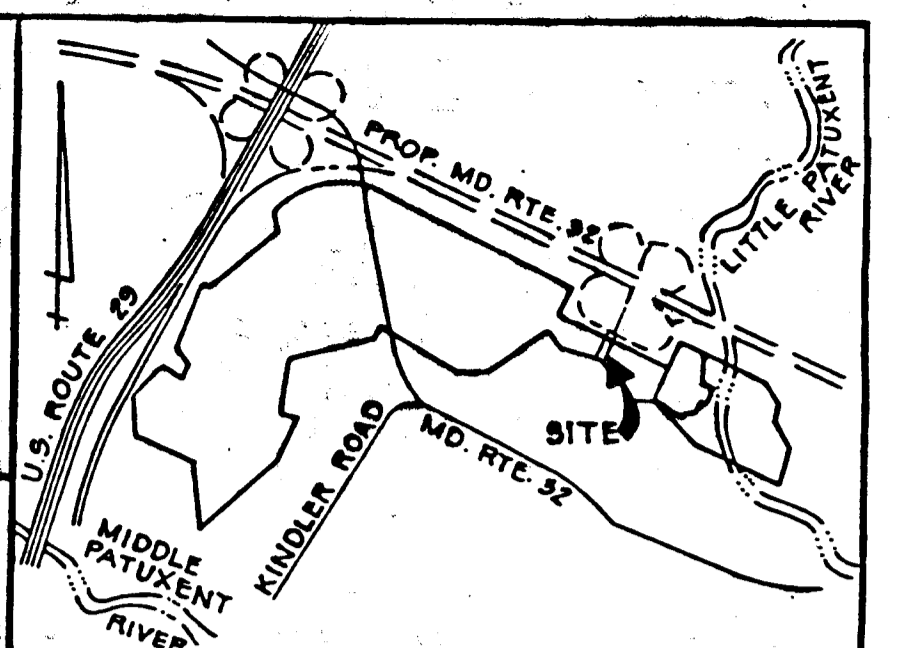


CERTIFICATION BY THE DEVELOPER:
I CERTIFY THAT ALL DEVELOPMENT AND/OR CONSTRUCTION WILL BE DONE ACCORDING TO THESE PLANS OF DEVELOPMENT AND PLANS FOR EROSION AND SEDIMENT CONTROL AND THAT ALL RESPONSIBLE PERSONNEL INVOLVED IN THE CONSTRUCTION PROJECT WILL HAVE A CERTIFICATE OF ATTENDANCE AT A DEPARTMENT OF NATURAL RESOURCES APPROVED TRAINING PROGRAM FOR THE CONTROL OF SEDIMENT AND EROSION BEFORE BEGINNING THE PROJECT. I ALSO AUTHORIZE PERIODIC ON-SITE INSPECTION BY THE HOWARD SOIL CONSERVATION DISTRICT OR THEIR AUTHORIZED AGENTS, AS ARE DEEMED NECESSARY.

Signature of Developer: *John H. Nick...* Date: 3/2/84

CERTIFICATE BY THE ENGINEER:
"I CERTIFY THAT THIS PLAN FOR EROSION AND SEDIMENT CONTROL REPRESENTS A PRACTICAL AND WORKABLE PLAN BASED ON MY PERSONAL KNOWLEDGE OF THE SITE CONDITIONS AND THAT IT WAS PREPARED IN ACCORDANCE WITH THE REQUIREMENTS OF THE HOWARD SOIL CONSERVATION DISTRICT"

Signature: *Robert W. Zich...* Date: 3/2/84



APPROVED: THESE PLANS FOR EROSION AND SEDIMENT CONTROL MEET THE REQUIREMENTS OF THE HOWARD SOIL CONSERVATION DISTRICT.

Signature: *Robert W. Zich...* Date: 5-27-84
Howard Soil Conservation District

THESE PLANS HAVE BEEN REVIEWED FOR THE HOWARD SOIL CONSERVATION DISTRICT AND MEET THE TECHNICAL REQUIREMENTS FOR SOIL EROSION AND SEDIMENT CONTROL.

Signature: *M. H. S. S...* Date: 5-27-84
U. S. Soil Conservation Service

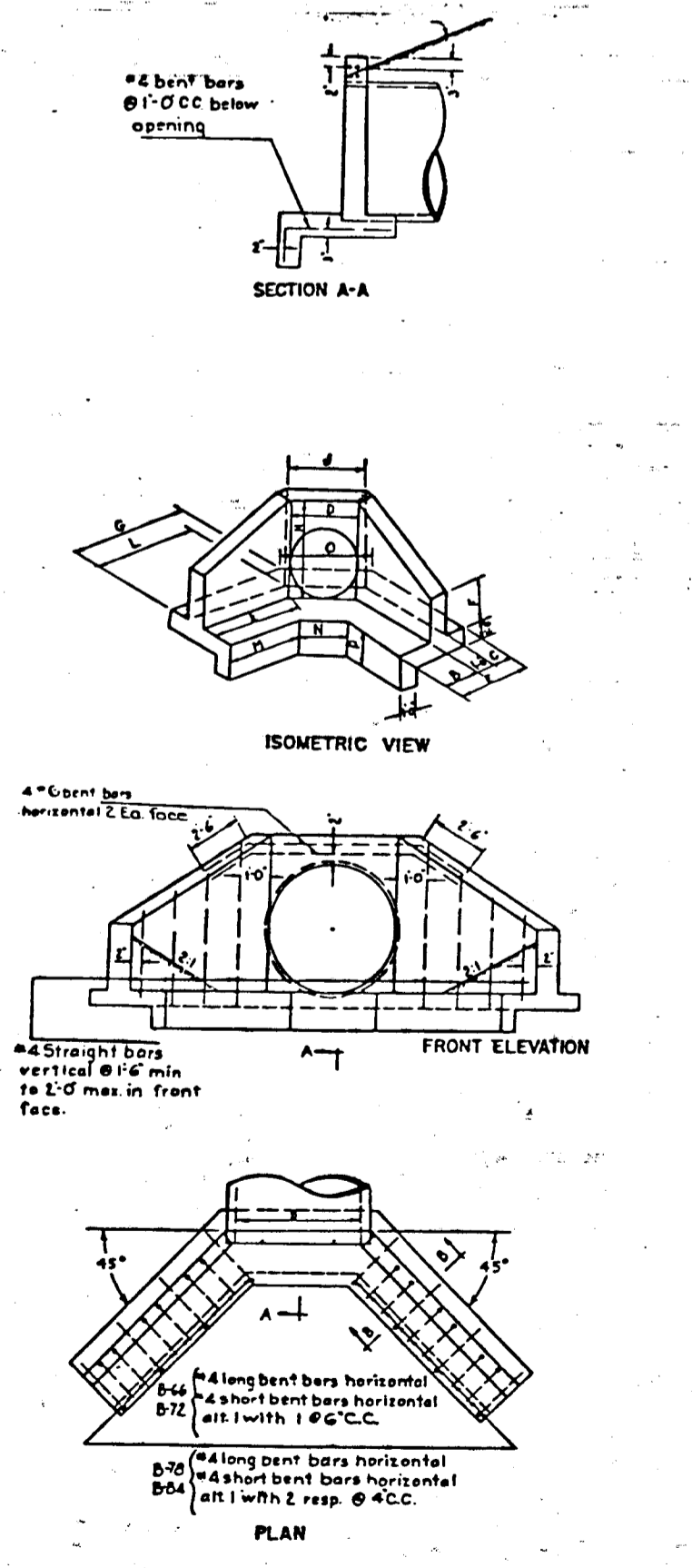
Date	No.	Revision Description
		RIVERS CORPORATE PARK SECTION I, AREA I 6TH ELECTION DISTRICT HOWARD COUNTY, MD.
		Owner and Developer
		THE HOWARD RESEARCH AND DEVELOPMENT CORPORATION THE ROUSE COMPANY Columbia, Maryland
		CENTURY ENGINEERING, INC. CONSULTING ENGINEERS - PLANNERS TOWSON, MARYLAND 21204
		TAX MAP 4142
		TITLE SHAKER DRIVE EXTENSION PLAN & PROFILE
Des By	F.D.T.	Scale 1"=50'
Drn By	J.A.G.	Date 11-21-83
Chk By	G.R.K.	Approved

AS BUILT SURVEY
CONTRIBUTED BY
WALTER PARKS
R.S. 65
L.S. 81
7-8-85

GENERAL NOTES:
1. Latest S.R.C.
2. See S.R.C. specifications
3. Deformed steel bars #4 @ 6" O.C.
4. All exposed edges 1/4" or as directed

Quantities in table to be used for estimating only

Opening	B	C	E	F	G	H	J	K	L	M	N	O	P	Med. Conc.
66	23.82	2.6	1.3	4.2	3.0	11.2	6.8	6.4	10.3	10.8	9.3	3.5	7.4	2.0
72	30.21	2.6	1.3	4.2	3.0	11.2	6.8	6.4	10.3	10.8	9.3	3.5	7.4	2.0
78	33.20	2.6	1.3	4.2	3.0	11.2	6.8	6.4	10.3	10.8	9.3	3.5	7.4	2.0
84	36.40	2.6	1.3	4.2	3.0	11.2	6.8	6.4	10.3	10.8	9.3	3.5	7.4	2.0



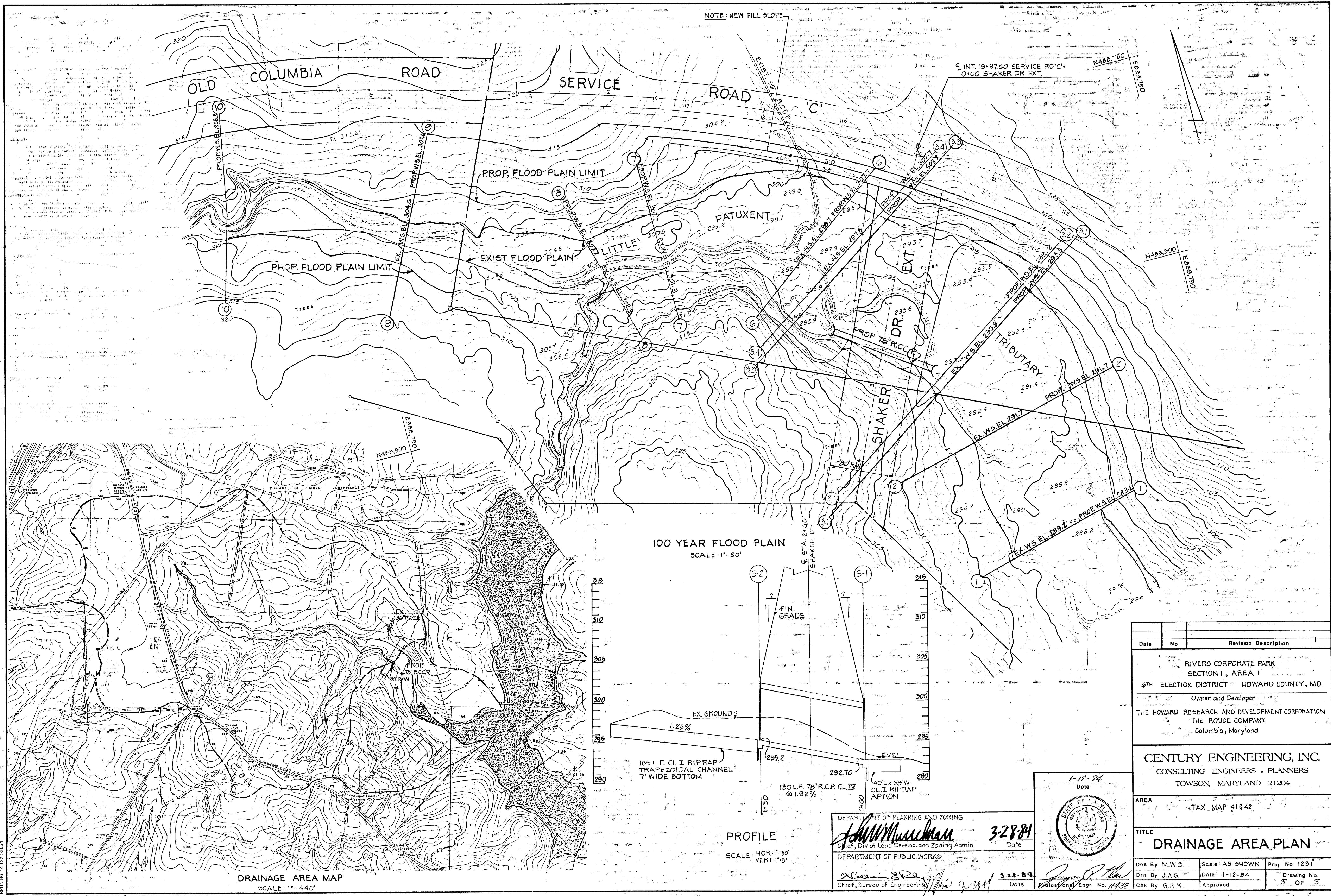
GENERAL NOTES

- ALL WORK SHALL BE PERFORMED IN ACCORDANCE WITH THE HOWARD COUNTY DESIGN MANUAL - VOLUME 12 "STANDARD DETAILS AND SPECIFICATIONS FOR CONSTRUCTION"
- APPROXIMATE LOCATION OF EXISTING UTILITIES ARE SHOWN. THE CONTRACTOR SHALL TAKE ALL NECESSARY PRECAUTIONS TO PROTECT THE EXISTING UTILITIES AND MAINTAIN UNINTERRUPTED SERVICE. ANY DAMAGE INCURRED DUE TO CONTRACTOR'S OPERATION SHALL BE REPAIRED IMMEDIATELY AT THE CONTRACTOR'S EXPENSE.
- THE CONTRACTOR SHALL TEST PIT EXISTING UTILITIES, WHERE DIRECTED BY THE ENGINEER, A MINIMUM OF TWO WEEKS IN ADVANCE OF CONSTRUCTION OPERATIONS.
- CONTRACTOR TO NOTIFY THE FOLLOWING UTILITIES AT LEAST THREE DAYS BEFORE STARTING WORK SHOWN ON THESE DRAWINGS:
 - STATE HIGHWAY ADMINISTRATION 531-5555
 - BALTIMORE GAS AND ELECTRIC CO. (Underground Gas Distribution)
 - Customer Service 685-0123
 - ENGINEERING "DAMAGE CONTROL" 294-5621
 - "MISS UTILITY" (1) 559-0100
 - CHESAPEAKE AND POTOMAC (C&P)
 - TELEPHONE COMPANY 725-9976
 - AMERICAN TELEPHONE AND TELEGRAPH
 - Cable Location Division 393-3553
 - COLONIAL PIPELINE COMPANY 781-4641
 - BUREAU OF UTILITIES HOWARD COUNTY 992-2966
- ALL INLETS SHALL BE CONSTRUCTED IN ACCORDANCE WITH HOWARD COUNTY STDS, UNLESS OTHERWISE SHOWN.
- STORM DRAIN TRENCHES WITHIN ROAD RIGHT-OF-WAY SHALL BE BACKFILLED AND COMPACTED IN ACCORDANCE WITH HOWARD COUNTY ROAD CODE.
- INSTALLATION OF TRAFFIC CONTROL DEVICES, MARKING AND SIGNING SHALL BE IN ACCORDANCE WITH THE MANUAL OF UNIFORM TRAFFIC CONTROL DEVICES 1971 REVISED EDITION.
- DESIGNED TRAFFIC SPEED IN ACCORDANCE WITH THE AMERICAN ASSOCIATION OF STATE HIGHWAY OFFICIAL STANDARDS.
- ALL ELEVATIONS SHOWN ARE BASED ON U.S.C. AND G.S. MEAN SEA LEVEL DATUM 1929
- SEDIMENT CONTROL SHALL BE AS SHOWN ON THIS PLAN. SEDIMENT CONTROL MEASURES ARE TO BE MAINTAINED IN A FUNCTIONING CONDITION. ADDITIONAL SEDIMENT CONTROL MAY BE REQUIRED BY INSPECTOR IN FIELD.

DEPARTMENT OF PUBLIC WORKS
Chief, Bureau of Engineering
Date: 3-23-84

DEPARTMENT OF PLANNING AND ZONING
Chief, Div. of Land Develop. and Zoning Admin.
Date: 3-28-84

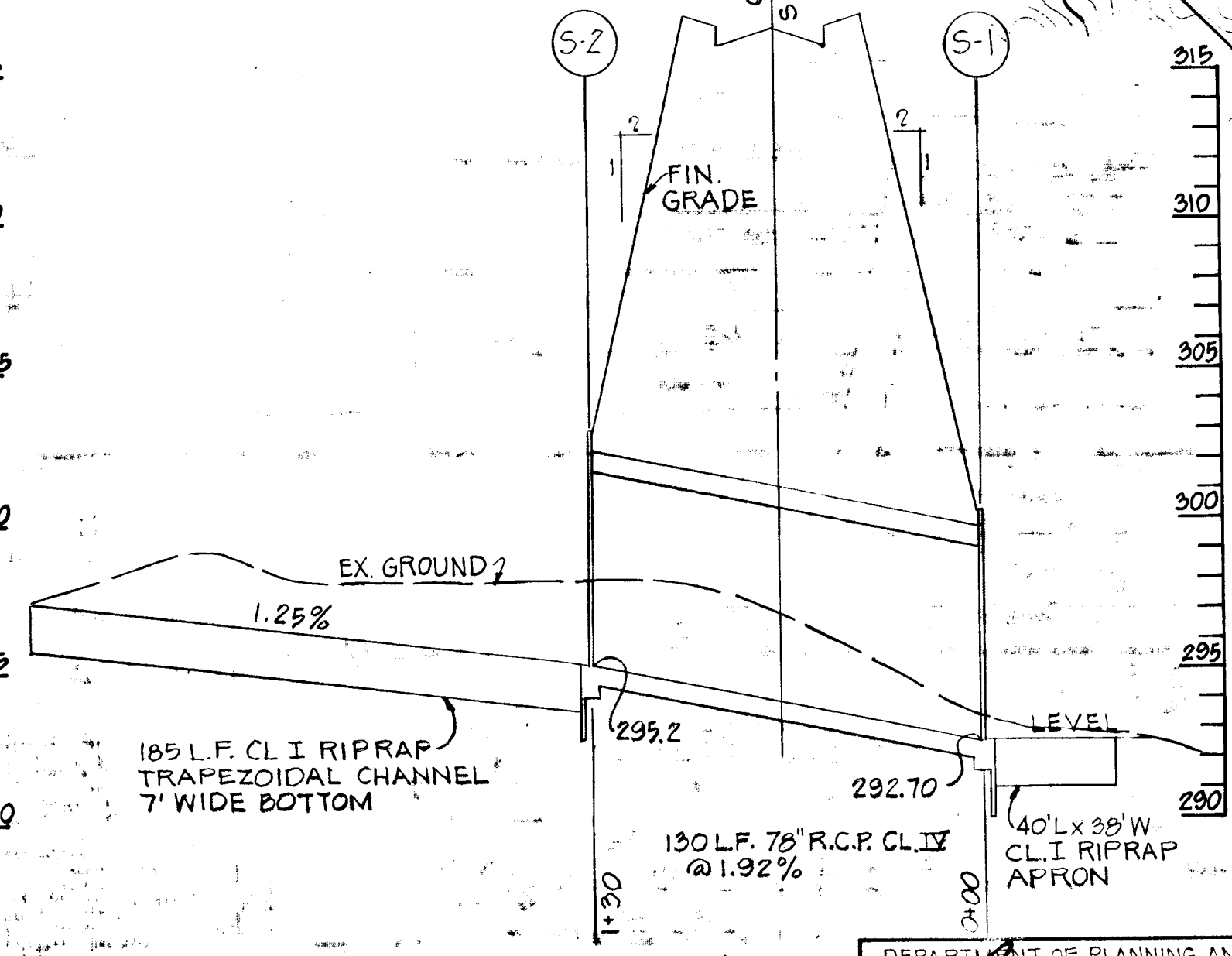
Drawing No. 3 OF 5



NOTE: NEW FILL SLOPE

DRAINAGE AREA MAP
SCALE: 1" = 440'

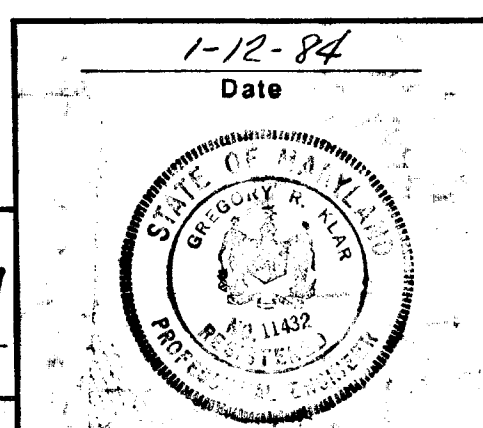
100 YEAR FLOOD PLAIN
SCALE: 1" = 50'



PROFILE
SCALE: HOR 1" = 50'
VERT 1" = 5'

DEPARTMENT OF PLANNING AND ZONING
John M. ... 3-28-84
Chief, Div. of Land Develop. and Zoning Admin. Date

DEPARTMENT OF PUBLIC WORKS
James R. ... 3-28-84
Chief, Bureau of Engineering Date



Date	No	Revision Description
		RIVERS CORPORATE PARK SECTION I, AREA I
		6TH ELECTION DISTRICT HOWARD COUNTY, MD.
		Owner and Developer THE HOWARD RESEARCH AND DEVELOPMENT CORPORATION THE ROUSE COMPANY Columbia, Maryland
		CENTURY ENGINEERING, INC. CONSULTING ENGINEERS - PLANNERS TOWSON, MARYLAND 21204
AREA		TAX MAP 41442
TITLE		DRAINAGE AREA PLAN
Des By M.W.S.	Scale: AS SHOWN	Proj No 1231
Drn By J.A.G.	Date: 1-12-84	Drawing No.
Chk By G.R.K.	Approved	3 OF 5