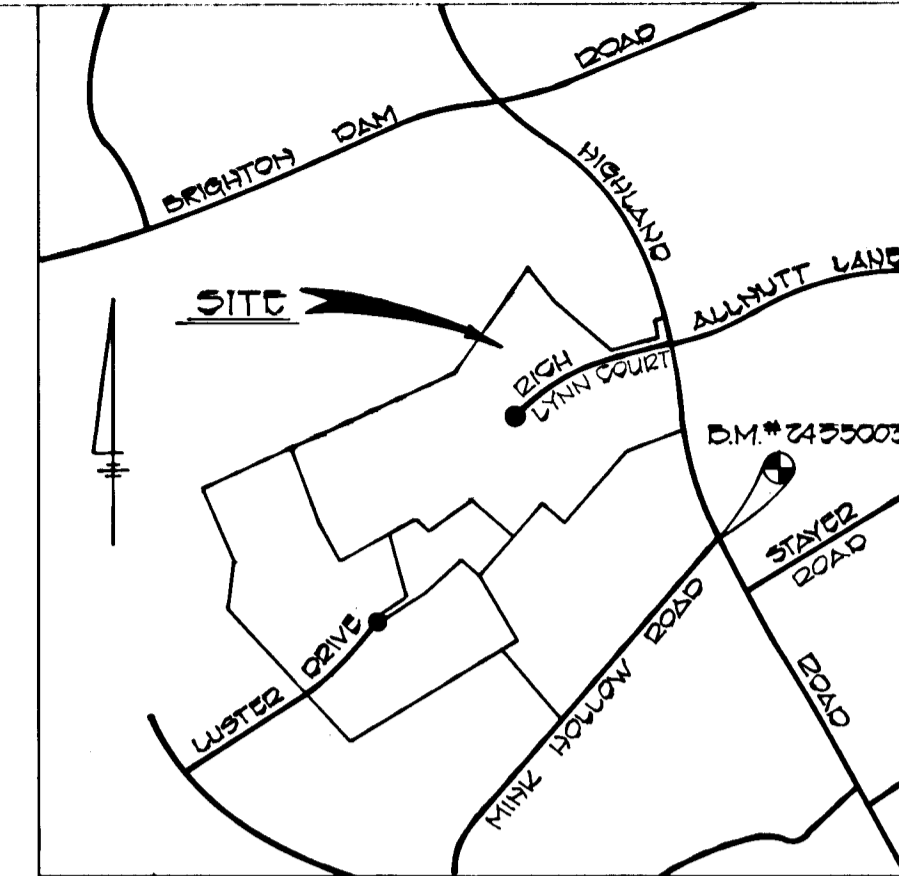
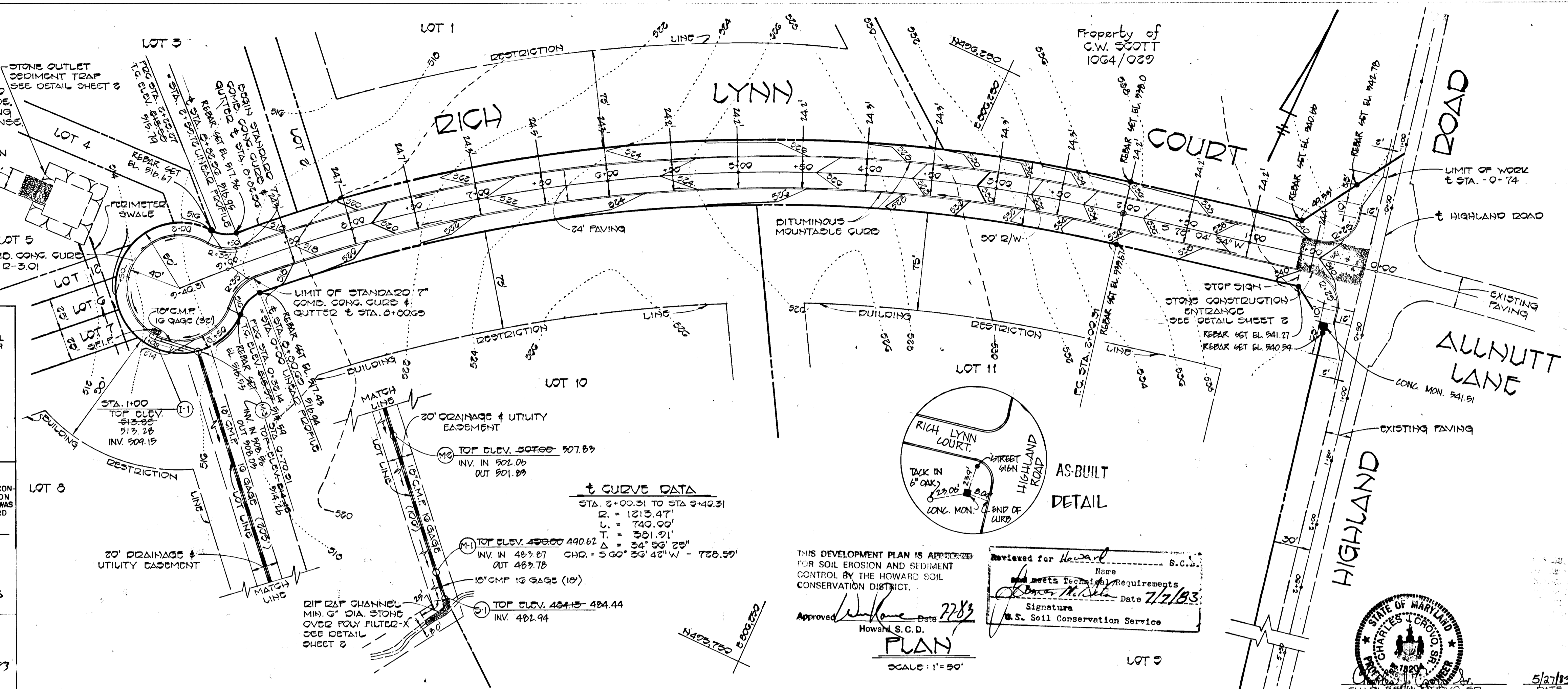


GENERAL NOTES

1. ALL WORK SHALL BE DONE IN ACCORDANCE WITH HOWARD COUNTY STANDARDS SPECIFICATION AND DETAILS FOR CONSTRUCTION.
2. ALL UTILITY COMPANIES MUST BE NOTIFIED 24 HOURS IN ADVANCE OF ANY CONSTRUCTION.
3. STORM DRAIN TRENCHES WITHIN ROAD RIGHT-OF-WAY SHALL BE DIGITILLED AND CONTRACTED IN ACCORDANCE WITH HOWARD COUNTY ROAD CODE.
4. ANY DAMAGES TO PUBLIC RIGHT-OF-WAY OR PAVING WILL BE CORRECTED AT THE CONTRACTOR'S EXPENSE.
5. CONTRACTOR TO NOTIFY THE HOWARD COUNTY DEPARTMENT OF INSPECTIONS AND PERMITS AT LEAST 3 DAYS BEFORE STARTING WORK SHOWN ON THESE DRAWINGS TEL. 395-8450



VICINITY MAP
SCALE: 1" = 1200'

BENCH MARK
*2455003 ELEV. 545.58
CONCRETE MONUMENT SET AT INTERSECTION OF
HIGHLAND ROAD AND MIMZ HOLLOW ROAD.

**JOCELYN ACRES
SECTION THREE
5TH ELECTION DISTRICT
HOWARD COUNTY, MARYLAND
RICH LYNN COURT
PLAN & PROFILE**

OWNER AND DEVELOPER
WILLIAM L. KAPLAN AND PAUL L. DEMMITT
9966 ROUTE 99
ELLICOTT CITY, MD. 21043

SCALE AS SHOWN DATE JUNE 2, 1983 DWG. NO. 1 OF 2
DES. C. CROVO, SR. DRN. A. BOGDAN CHK. R.B. CARTER
FISH R. COLLINS AND CARTER, INC.
CIVIL ENGINEERS AND LAND SURVEYORS
838R COURT AVE. ELLICOTT CITY, MARYLAND 21043

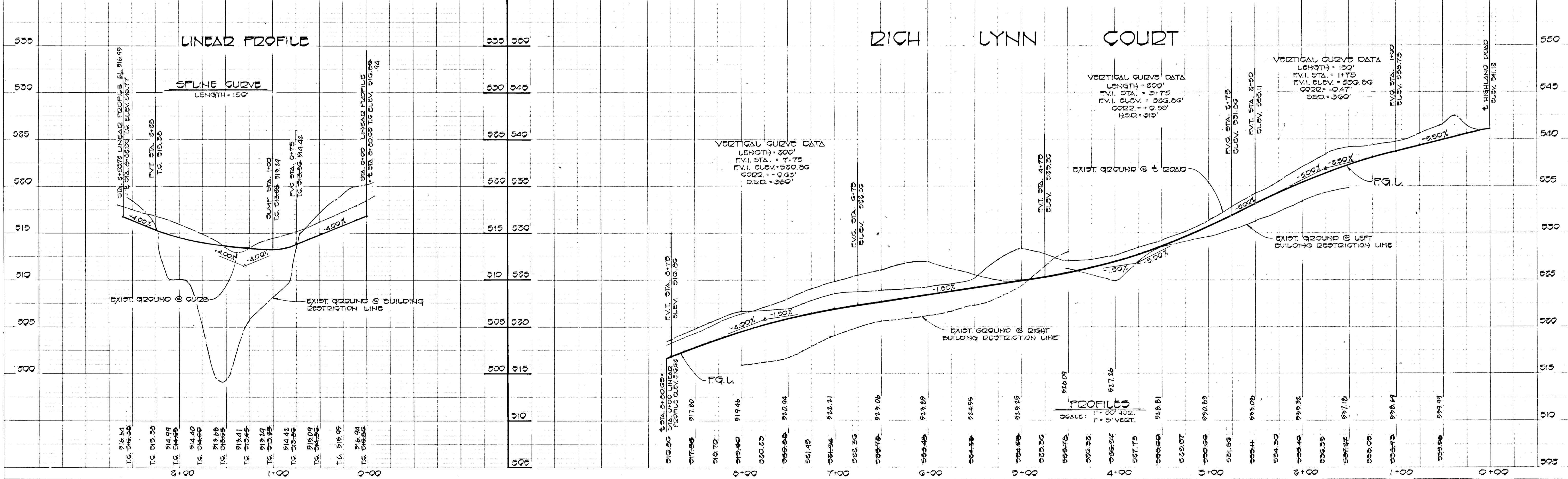
DEVELOPERS CERTIFICATE
"I/WE CERTIFY THAT ALL DEVELOPMENT AND CONTRACTOR WILL BE DONE ACCORDING TO THIS PLAN OF DEVELOPMENT AND PLAN FOR EROSION AND SEDIMENT CONTROL AND THAT ALL RESPONSIBLE PERSONNEL INVOLVED IN THE CONSTRUCTION PROJECT WILL HAVE A CERTIFICATE OF ATTENDANCE AT A DEPARTMENT OF NATURAL RESOURCES APPROVED TRAINING PROGRAM FOR THE CONTROL OF SEDIMENT AND EROSION BEFORE BEGINNING THE PROJECT. I ALSO AUTHORIZE PERIODIC ONSITE INSPECTION BY THE HOWARD SOIL CONSERVATION DISTRICT OR THEIR AUTHORIZED AGENTS, AS ARE DEEMED NECESSARY."
Richard L. Demmitt 5-27-83 DATE
Charles J. Crovo, Sr. 5/27/83 DATE

ENGINEER'S CERTIFICATE
"I HEREBY CERTIFY THAT THIS PLAN FOR EROSION AND SEDIMENT CONTROL REPRESENTS A PRACTICAL AND WORKABLE PLAN BASED ON MY PERSONAL KNOWLEDGE OF THE SITE CONDITIONS AND THAT IT WAS PREPARED IN ACCORDANCE WITH THE REQUIREMENTS OF THE HOWARD SOIL CONSERVATION DISTRICT."
Charles J. Crovo, Sr. 5/27/83 DATE

APPROVED OFFICE OF PLANNING AND ZONING
William E. Reilly 7-11-83 DATE

APPROVED OFFICE OF PLANNING AND ZONING
Louis F. Duma 7-8-83 DATE

THIS DEVELOPMENT PLAN IS APPROVED FOR SOIL EROSION AND SEDIMENT CONTROL BY THE HOWARD SOIL CONSERVATION DISTRICT.
Approved **[Signature]** Date **7/7/83**
Howard S. C. D.
Reviewed for Howard [Signature] Date **7/7/83**
S.S. Soil Conservation Service



PROFILE

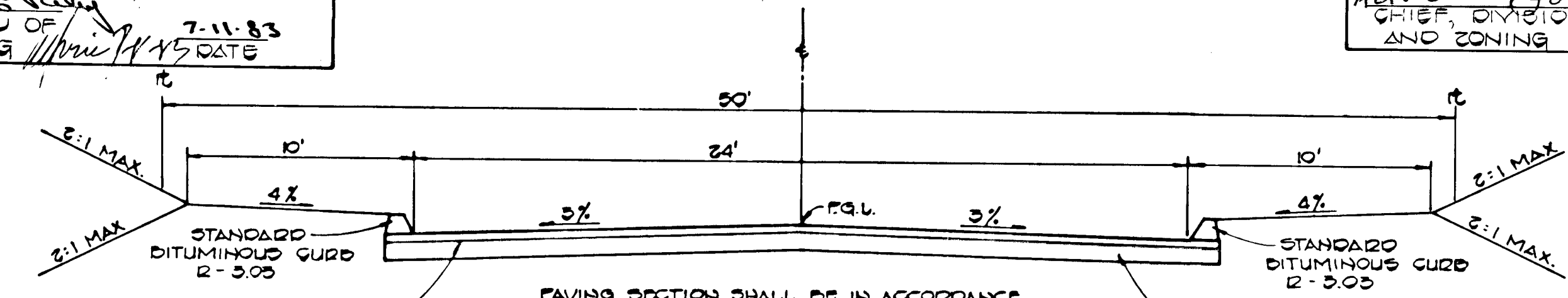
NO.	DATE

BY	REVISION	DATE
3	REMOVE HIGHWAY RD WIDENING SECT	7-28-83

APPROVED:
DEPARTMENT OF PUBLIC WORKS
W. C. ...
CHIEF, BUREAU OF ENGINEERING
7-11-83
DATE

RICH LYNN COURT
TYPE OF TRAFFICWAY: CUL-DE-SAC
ZONED-R
DESIGN SPEED 30 M.P.H.

APPROVED:
OFFICE OF PLANNING AND ZONING
ACTING CHIEF, DIVISION OF LAND DEVELOPMENT AND ZONING ADMINISTRATION
J. ...
7-8-83
DATE

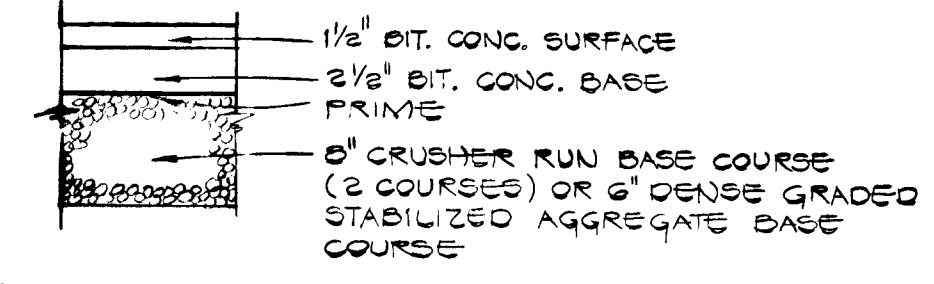


TACK COAT IN ACCORDANCE WITH THE HOWARD COUNTY DESIGN MANUAL VOLUME IX

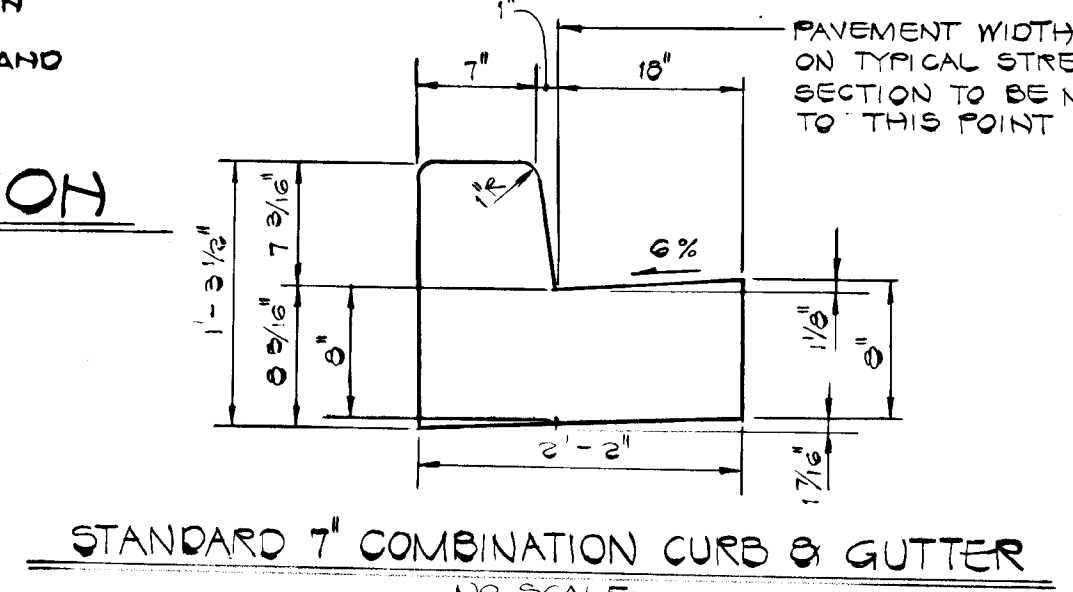
BASE WILL BE PRIMED IN ACCORDANCE WITH THE HOWARD COUNTY DESIGN MANUAL VOLUME IX

NOTE: ALL MATERIALS AND CONSTRUCTION SHALL BE IN ACCORDANCE WITH THE HOWARD COUNTY DESIGN MANUAL VOLUME IX STANDARD SPECIFICATIONS AND DETAILS FOR CONSTRUCTION.

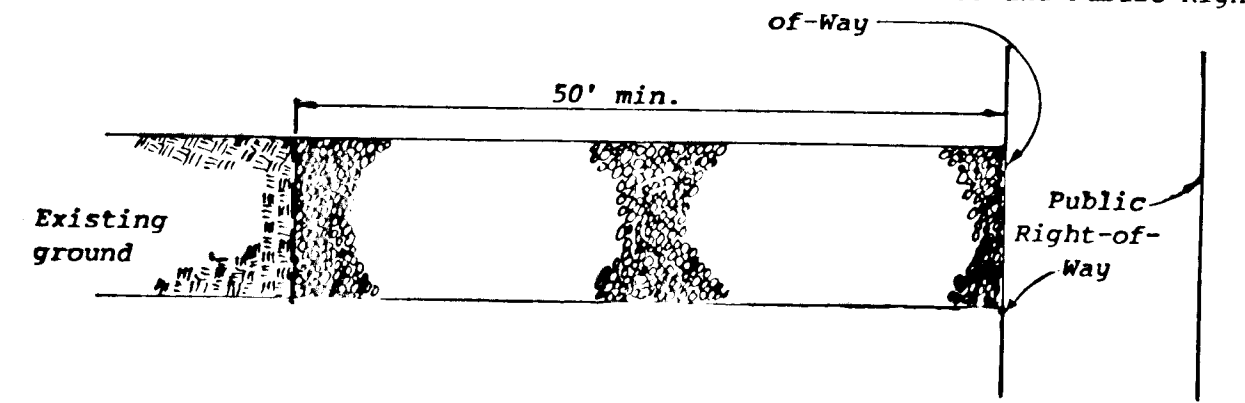
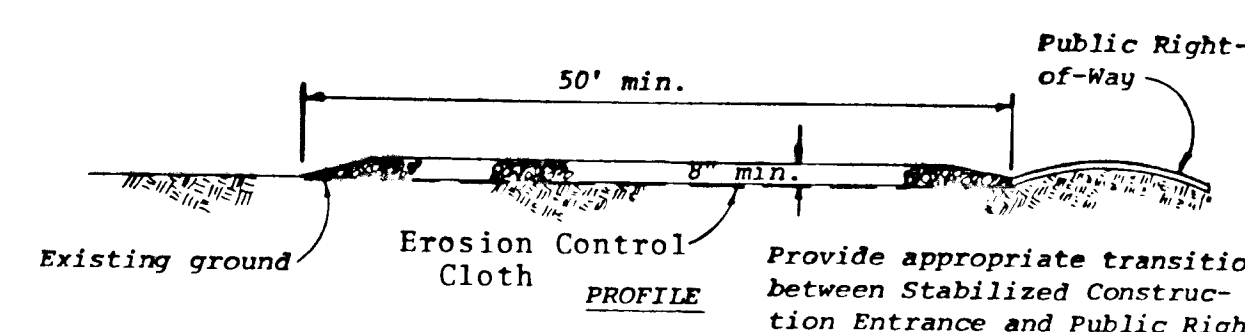
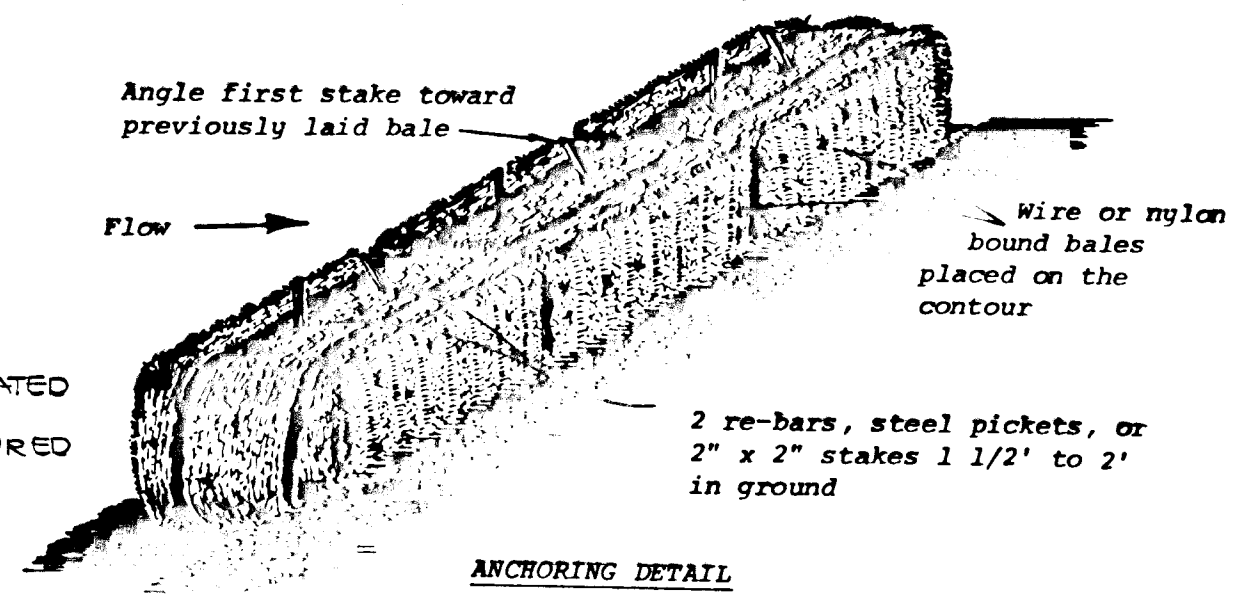
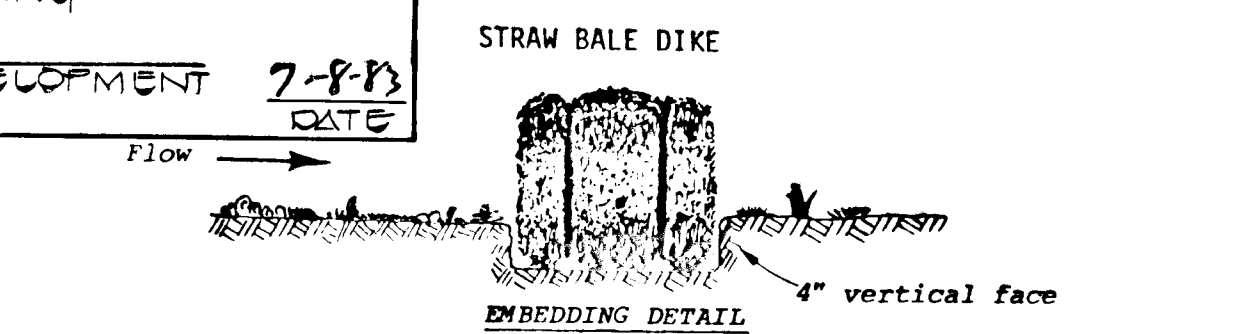
TYPICAL ROADWAY SECTION
NO SCALE



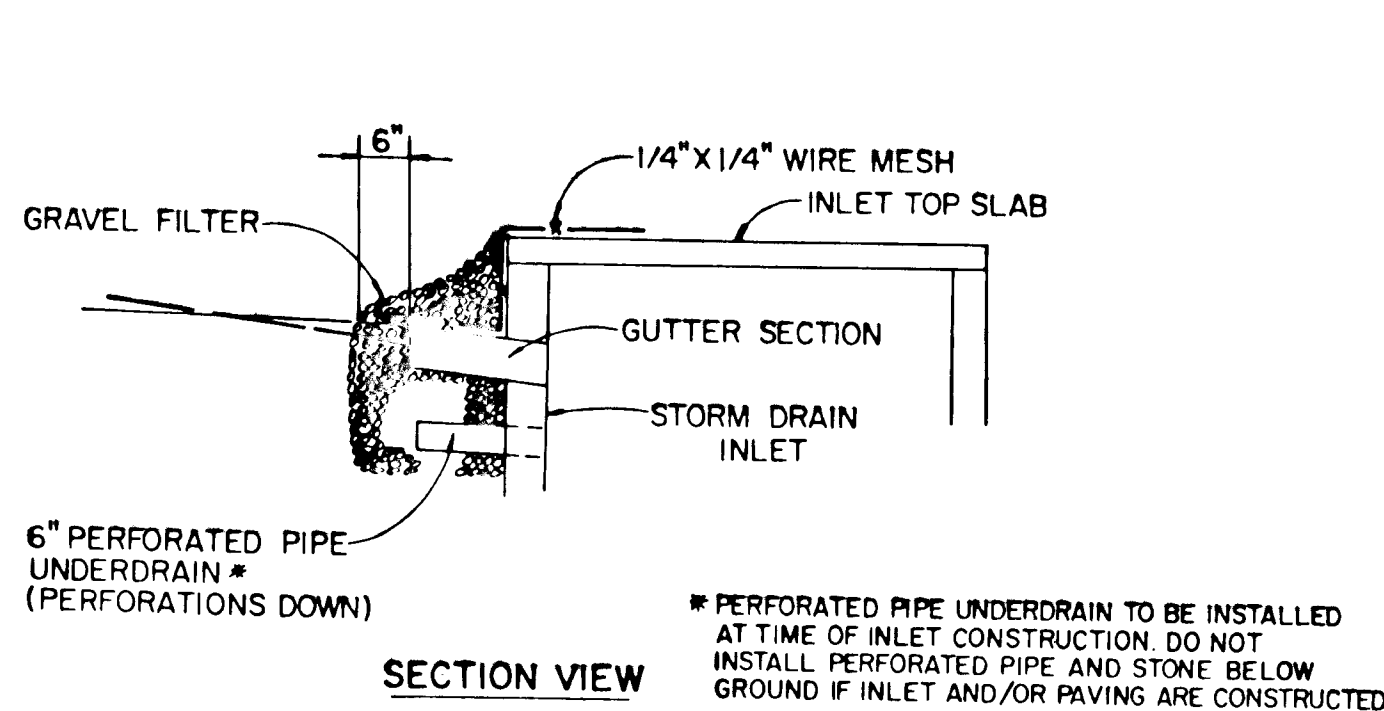
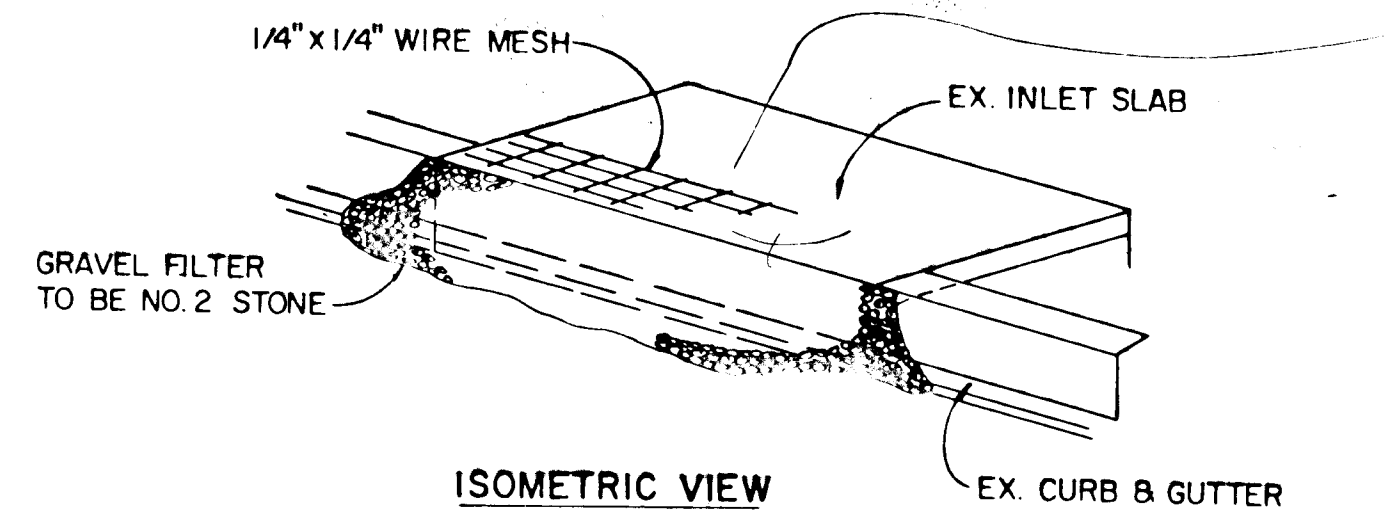
TYPICAL PAVING SECTION RICH LYNN COURT
NO SCALE



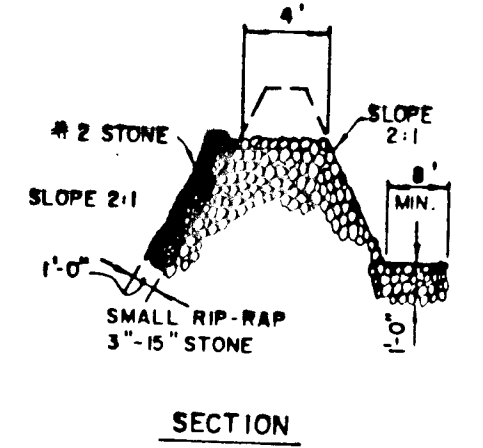
STANDARD 7\"/>



STABILIZED CONSTRUCTION ENTRANCE
NOT TO SCALE



SECTION VIEW
STONE FILTER INLET PROTECTION DETAIL
NO SCALE

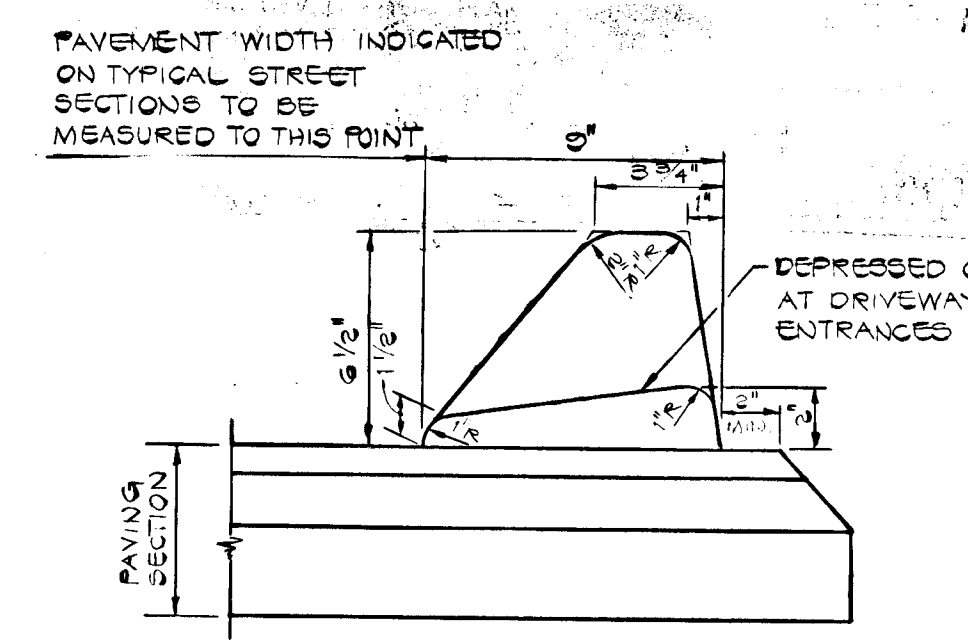
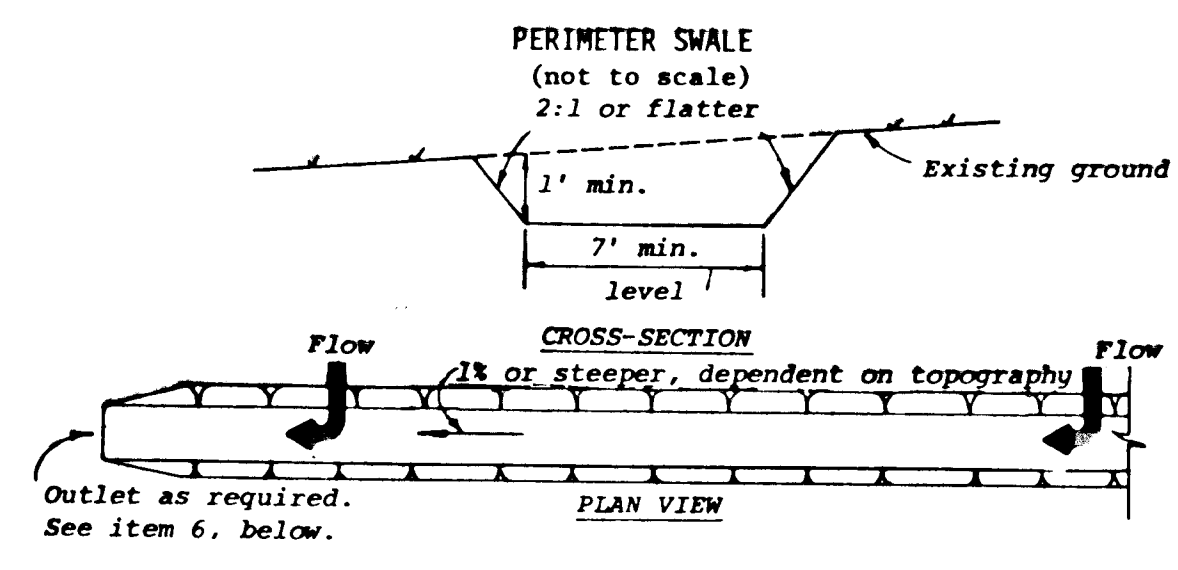


SITE ANALYSIS
TOTAL AREA OF SECTION 3..... 36.7 AC ±
IMPERVIOUS AREA..... 4.95 AC ±
AREA TO BE VEGETATED..... 1.1 AC ±
UNDISTURBED AREA..... 30.65 AC ±

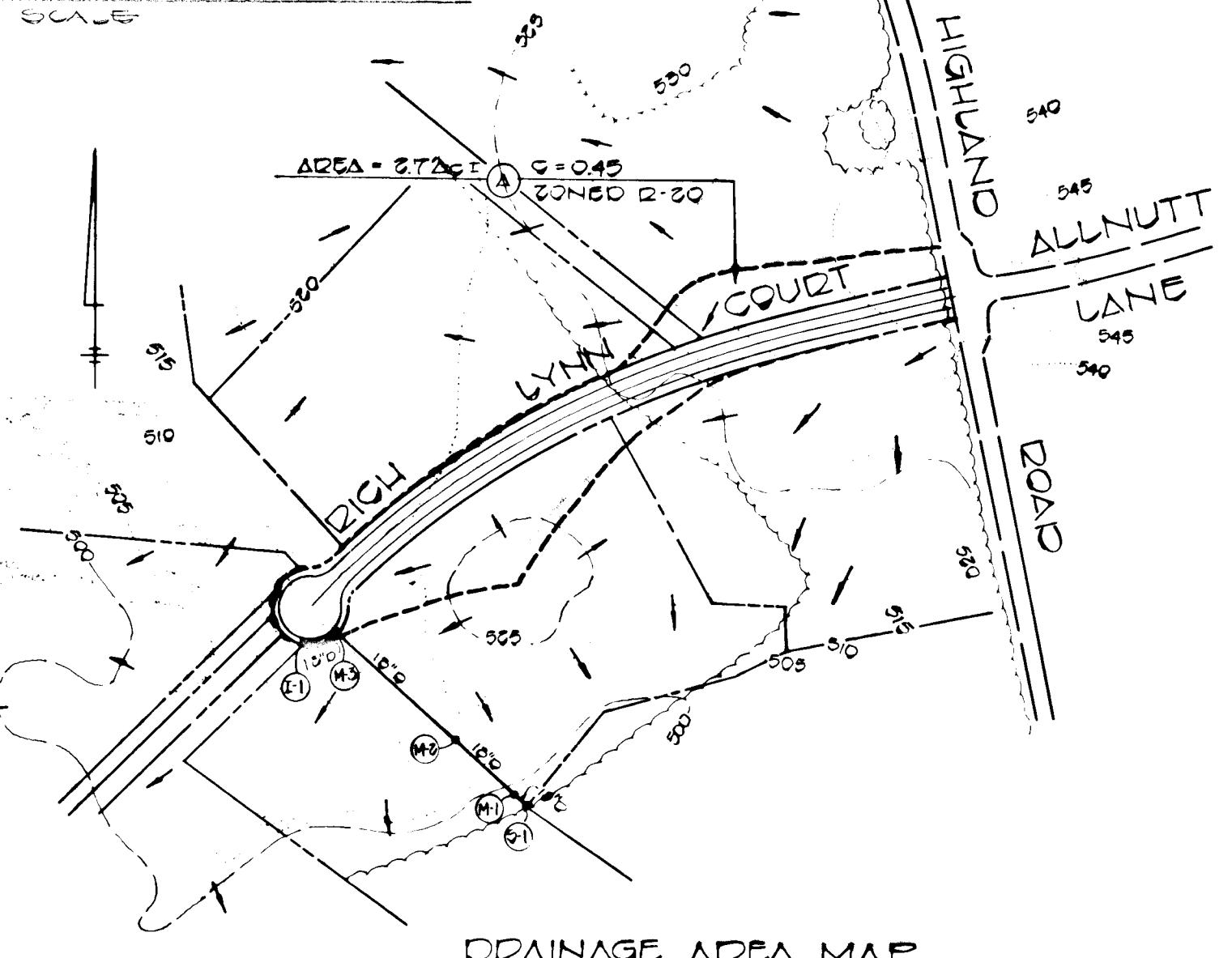
STORM DRAIN PROFILE AND DETAILS
JOGELYN ACRES
SECTION THREE
5TH ELECTION DISTRICT
HOWARD COUNTY, MARYLAND
SCALE: AS SHOWN
JUNE 2, 1983
SHEET 2 OF 2

CONSTRUCTION SEQUENCE

- OBTAIN GRADING PERMIT.
- CONSTRUCT STONE CONSTRUCTION ENTRANCE AS SHOWN ON PLAN.
- CONSTRUCT PERIMETER SWALE AND STONE OUTLET SEDIMENT TRAP AT END OF CUL-DE-SAC.
- CONSTRUCT STORM DRAIN SYSTEM AND INSTALL STONE FILTER PROTECTION DEVICE AT I-1. THE CONTRACTOR SHALL PLACE STRAW BALES DOWNGRADE OF STORM DRAIN CONSTRUCTION AT THE END OF EACH WORKING DAY.
- PLACE RICH LYNN COURT TO SUBGRADE AND STABILIZE SLOPE AREAS BETWEEN EXISTING GROUND AND BACK OF CURB WITH PERMANENT SEEDING.
- UPON STABILIZATION OF GRADED AREAS, INLET I-1 SHALL BE OPENED AND ALL ACCUMULATED SEDIMENT SHALL BE REMOVED FROM THE STORM DRAIN SYSTEM. CONSTRUCT RIP-RAP CHANNEL.
- DURING CONSTRUCTION, SEDIMENT SHALL BE REMOVED FROM THE TRAP WHEN THE CLEANOUT ELEVATION HAS BEEN REACHED.
- DURING CONSTRUCTION AND AFTER EACH RAINFALL, THE CONTRACTOR SHALL INSPECT AND PROVIDE NECESSARY MAINTENANCE ON THE SEDIMENT AND EROSION CONTROL STRUCTURES SHOWN HEREON.
- CLEAN BASE COURSE, APPLY TACK COAT TO BASE COURSE, LAY SURFACE COURSE, AND INSTALL BITUMINOUS CURB.
- THE SEDIMENT TRAP SHALL BE BACKFILLED, GRADED AND STABILIZED WITH THE PERMANENT SEEDING SPECIFICATIONS.
- ALL DISTURBED AREAS DUE TO REMOVAL OF SEDIMENT CONTROL MEASURES SHALL BE GRADED AND STABILIZED BY PERMANENT SEEDING.
- THE CONTRACTOR SHALL PLACE STRAW BALE DIKES DOWNGRADE OF ANY CONSTRUCTION DUE TO THE WIDENING OF HIGHLAND ROAD AT THE END OF EACH DAY.



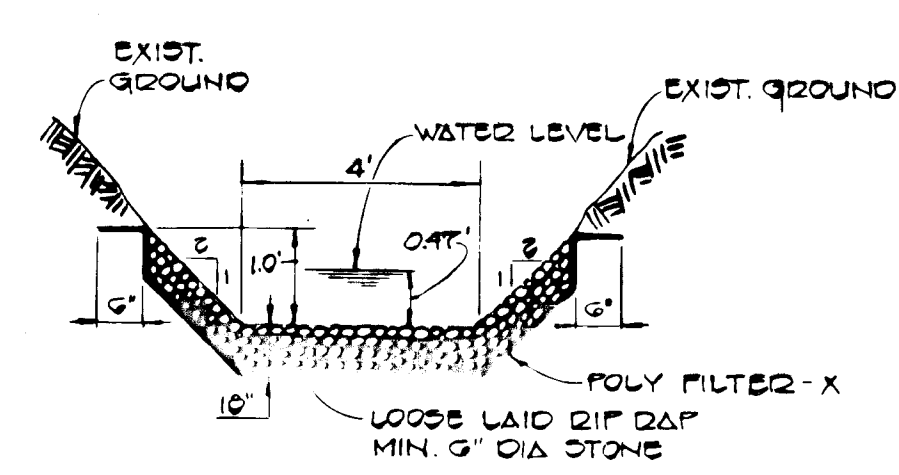
STANDARD BITUMINOUS CURB
NO SCALE



DRAINAGE AREA MAP
SCALE: 1\"/>

SEDIMENT TRAP DESIGN DATA

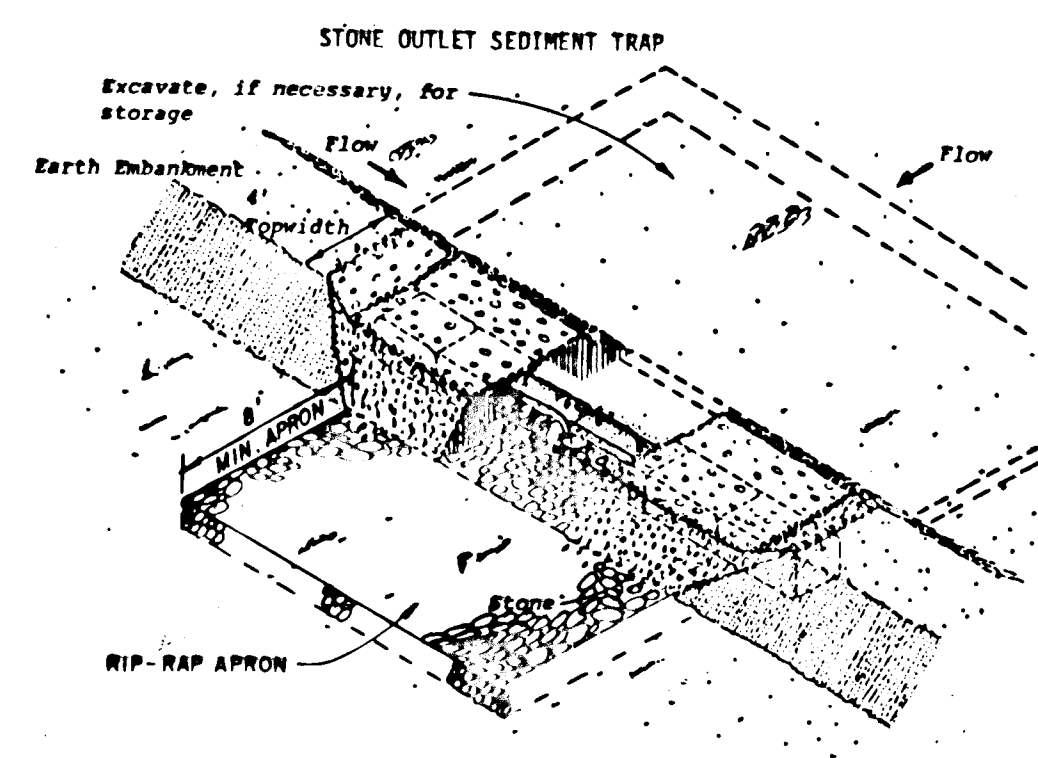
DRAINAGE AREA - 2.7 AC ±
VOLUME REQUIRED - 101 CU. YDS.
VOLUME PROVIDED - 107 CU. YDS.
TOP DIMENSION - 45' x 45'
BOTTOM DIMENSION - 31' x 31'
DEPTH OF TRAP - 3'
SIDE SLOPES - 3:1
CLEAN OUT ELEVATION - 510.5
WIDE GREST ELEVATION - 513.0
BOTTOM ELEVATION - 509.0



RIP RAP CHANNEL @ 5:1
NO SCALE

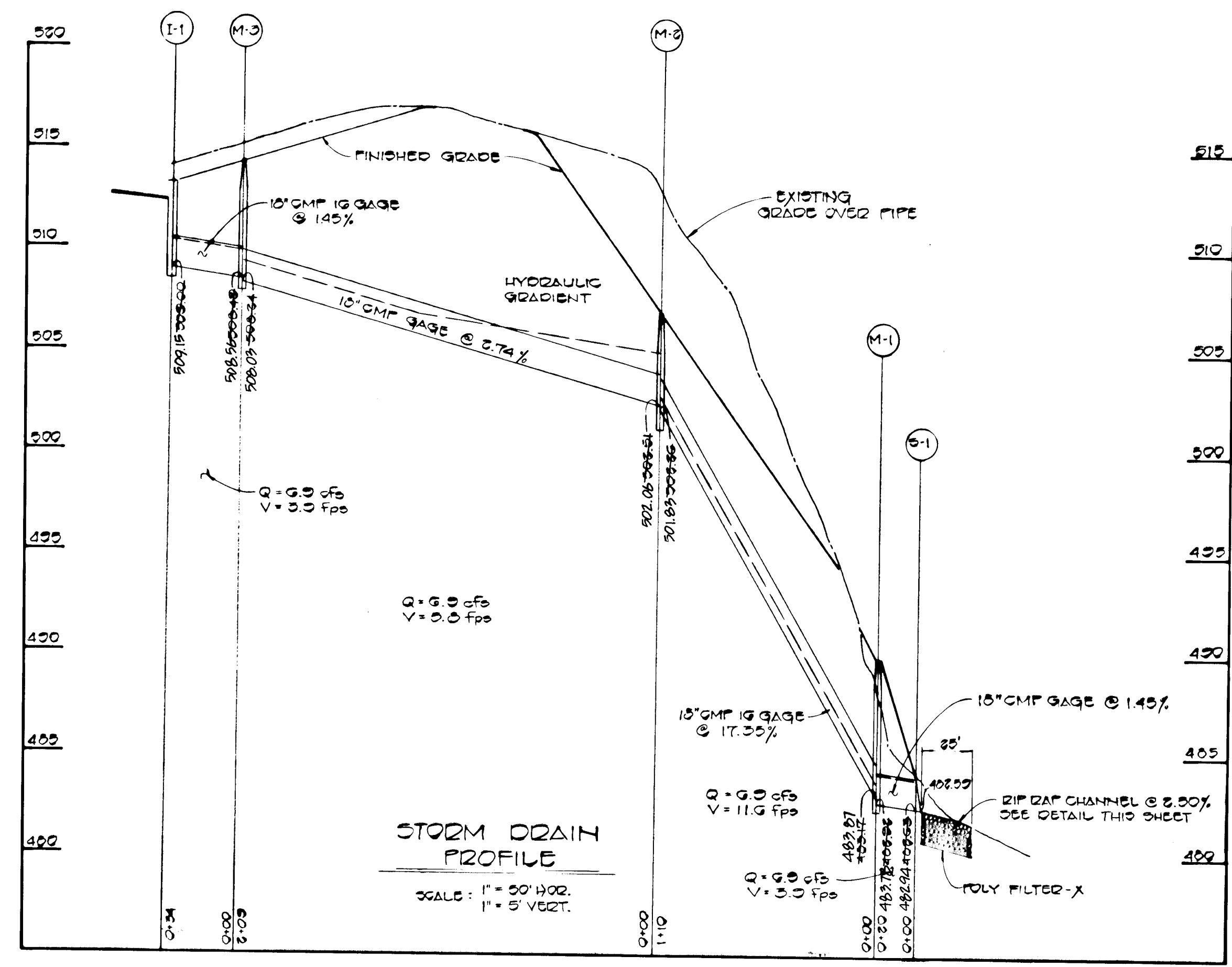
CHANNEL DESIGN DATA @ 5:1

A = 2.33
F = 410
D = 0.5003
R^{2/3} = 0.5540
V = 1.450
Q = A x V = 2.33 x 0.5540 x 1.450 = 1.88 cfs



STONE OUTLET SEDIMENT TRAP

NO.	TYPE	INV. IN	INV. OUT	TOP ELEV.	REMARKS
I-1	A-5	-	502.00	513.25	DRWG. 30 401
M-1	STANDARD MANHOLE	403.17	403.00	490.00	DRWG. 3 501
M-2	STANDARD MANHOLE	502.51	502.25	507.00	DRWG. 3 501
M-3	STANDARD MANHOLE	502.43	502.24	514.42	DRWG. 3 501
S-1	STAND. METAL END SECT.	-	402.63	404.13	DRWG. 30 361



STORM DRAIN PROFILE
SCALE: 1\"/>

FISHER, COLLINS AND CARTER, INC.
CONSULTING ENGINEERS AND LAND SURVEYORS
8500 COURT AVENUE
BUELOTT CITY, MARYLAND 21045



7/5/83
DATE