

PIPE CURVE DATA
 R=300'
 $\Delta = 08^{\circ}20'00''$
 $T = 24.49'$
 $LC = 48.87'$
 $LCHD = 48.82'$

PARCEL 1
 TOWN CENTER
 SECTION 8 AREA 2
 P.B. 18

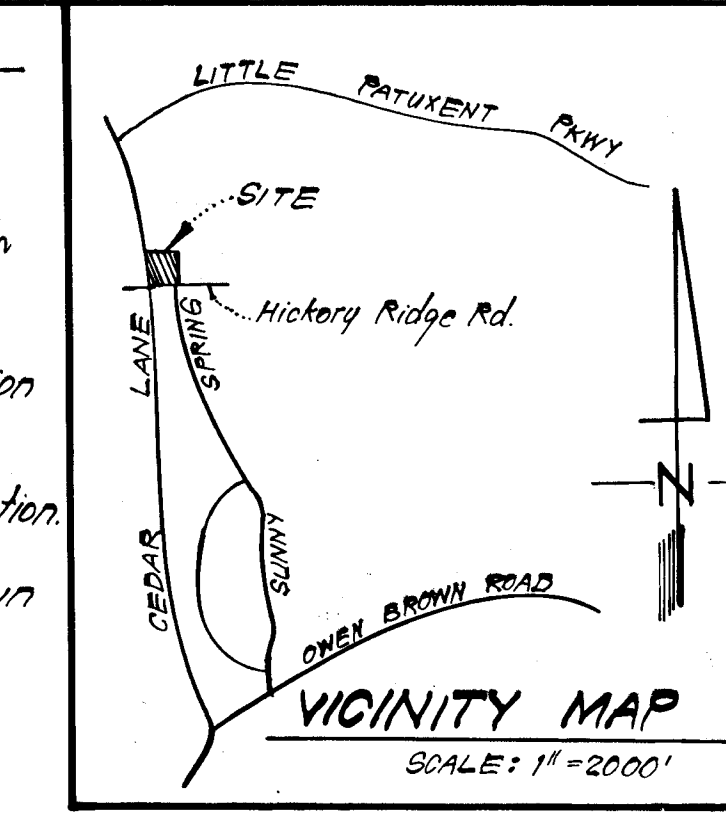
PARCEL 12A
 3.6077 Acres

PARCEL COLUMBIA TOWN CENTER
 SECTION 8 AREA 4
 PLAT 470G

PLAN
 SCALE: 1"=30'

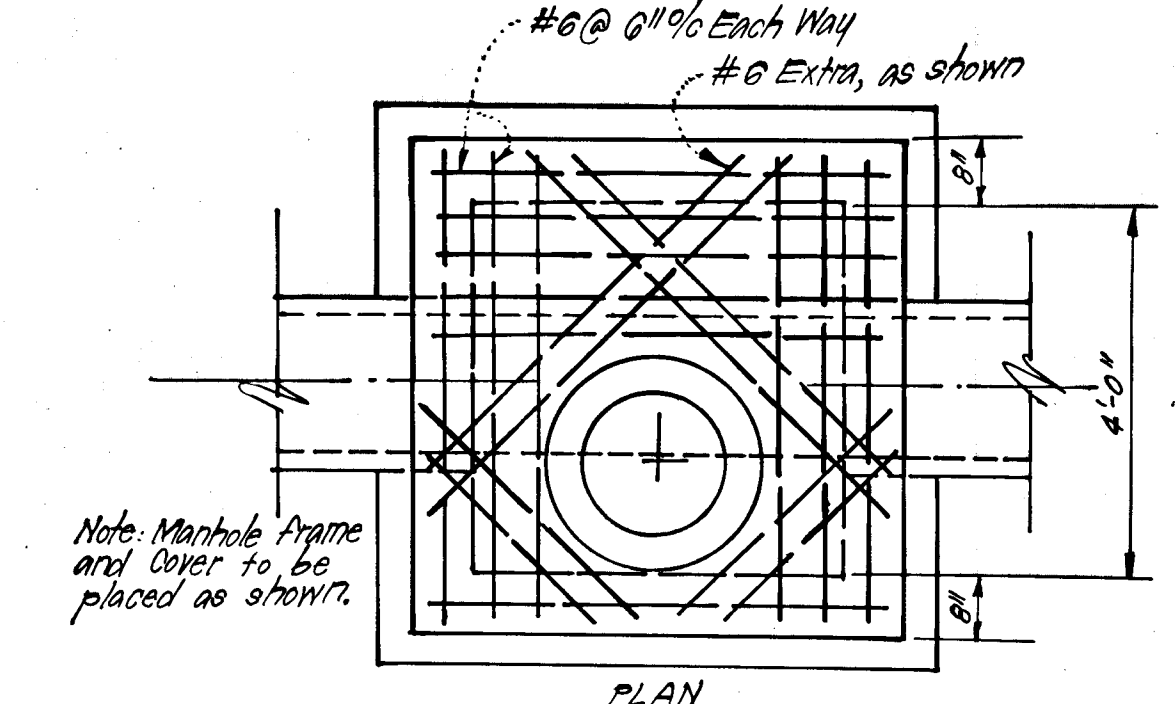
GENERAL NOTES

- All storm drain paving shall be constructed in accordance with the latest details and specifications of Howard Co. & Md. SHA.
- Types of storm drain structures refer to the Standard Details of Howard County & Maryland State Highway Administration.
- Trench Compaction for storm drains within Road or street right of way limits shall be in accordance with the latest Howard Co. Road Code.
- Information concerning underground utilities was obtained from available records, but the contractor must determine the exact location and elevation of the mains by digging test pits, by hand at all utility crossings, well in advance of construction.
- All utility companies shall be notified 24 hrs in advance of construction.
- Zoning: New Town (Employment Center Commercial)
- Storm Water Management for this site to be provided as shown on SDP-81-105-C.
- For Sediment & Erosion Control, See Clark, FineFrock & Sackett File Plan # 80-078-X (Sht 3 of 4) and SDP 81-105-C.

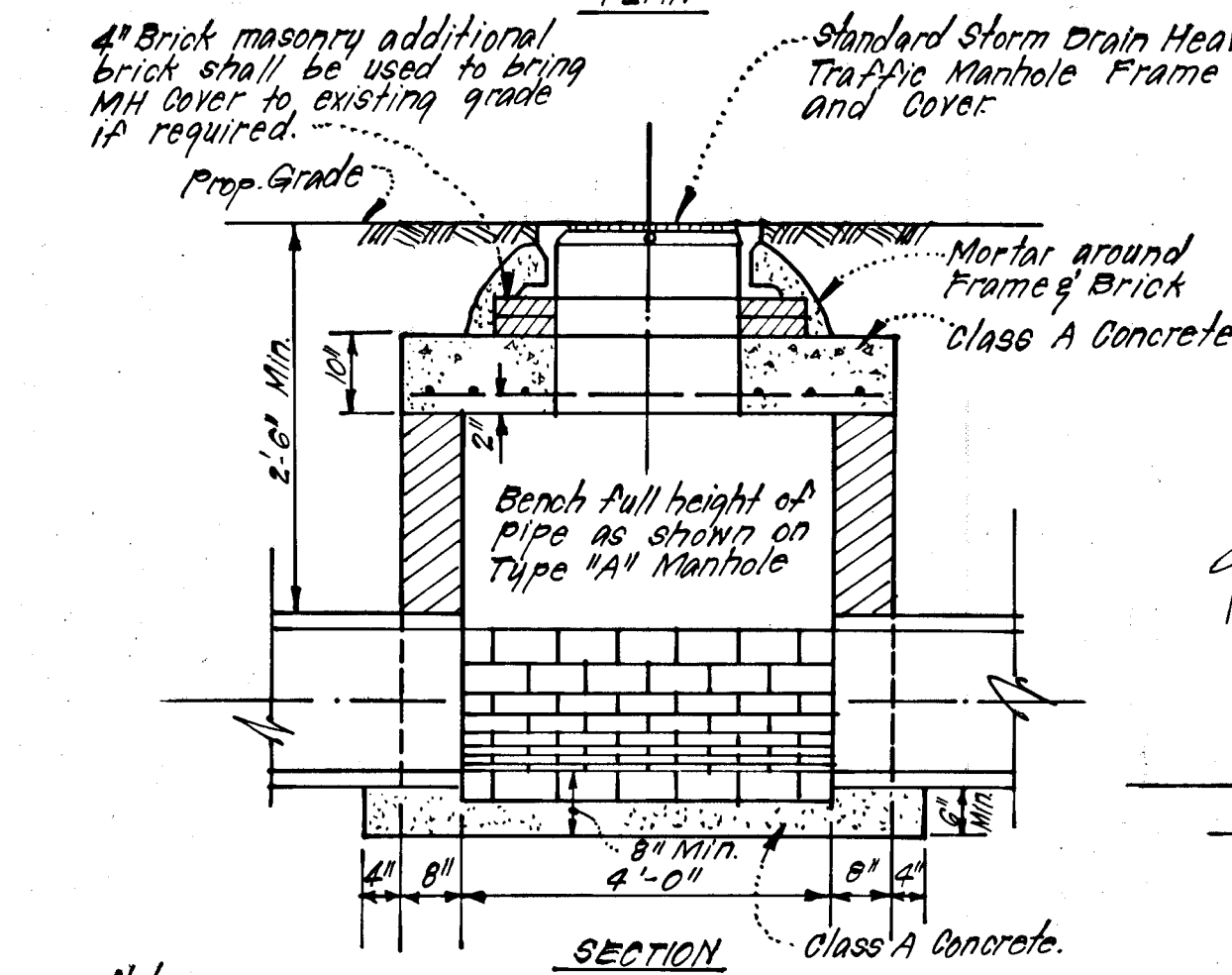


LEGEND:

- Contour Interval 2.0'
- Existing Contour
- Existing Storm Drain
- Prop. Storm Drain



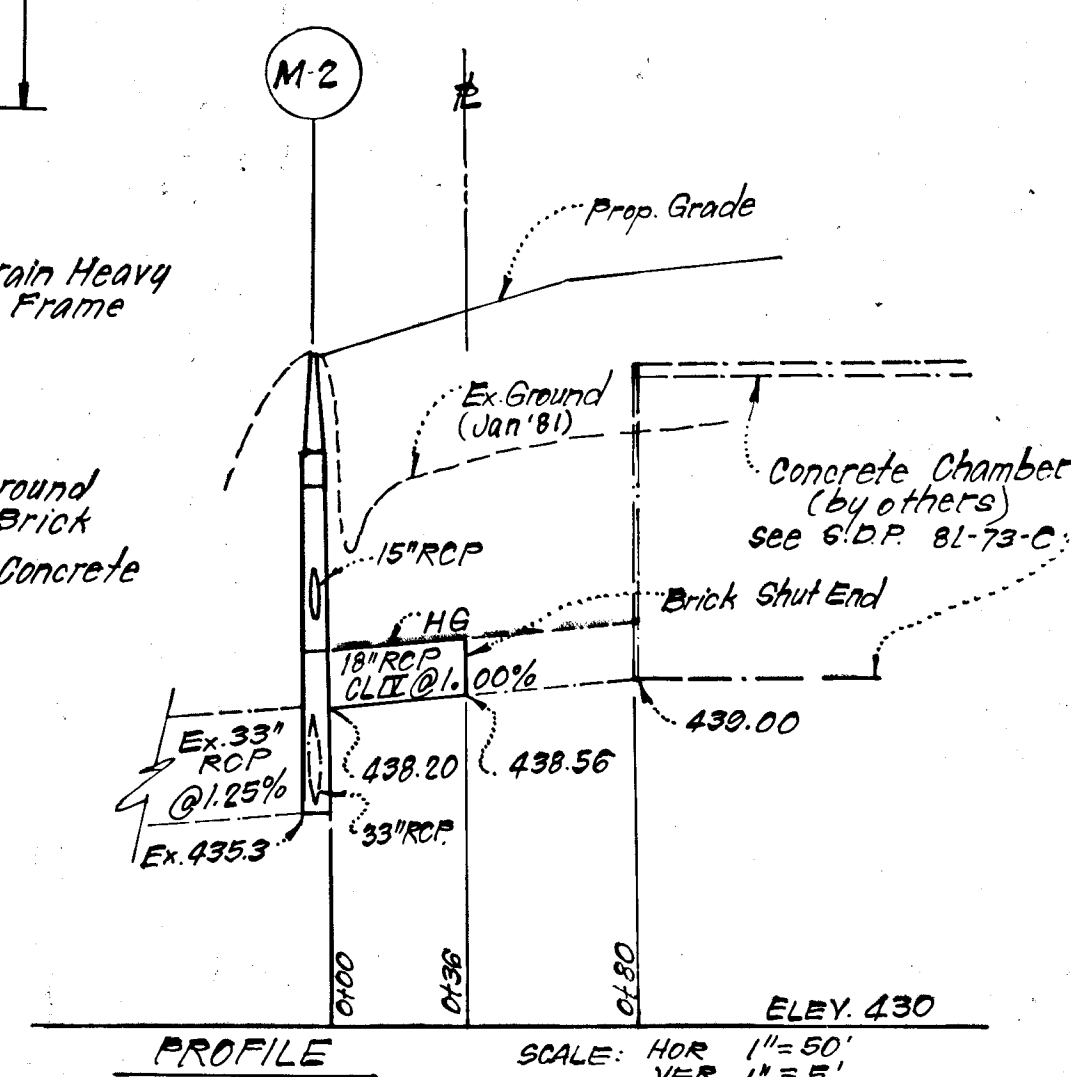
Note: Manhole Frame and Cover to be placed as shown.



Notes:

- Walls and Invert shall be brick.
- Apply two coats of a Waterproof Bituminous Compound over cement mortar.

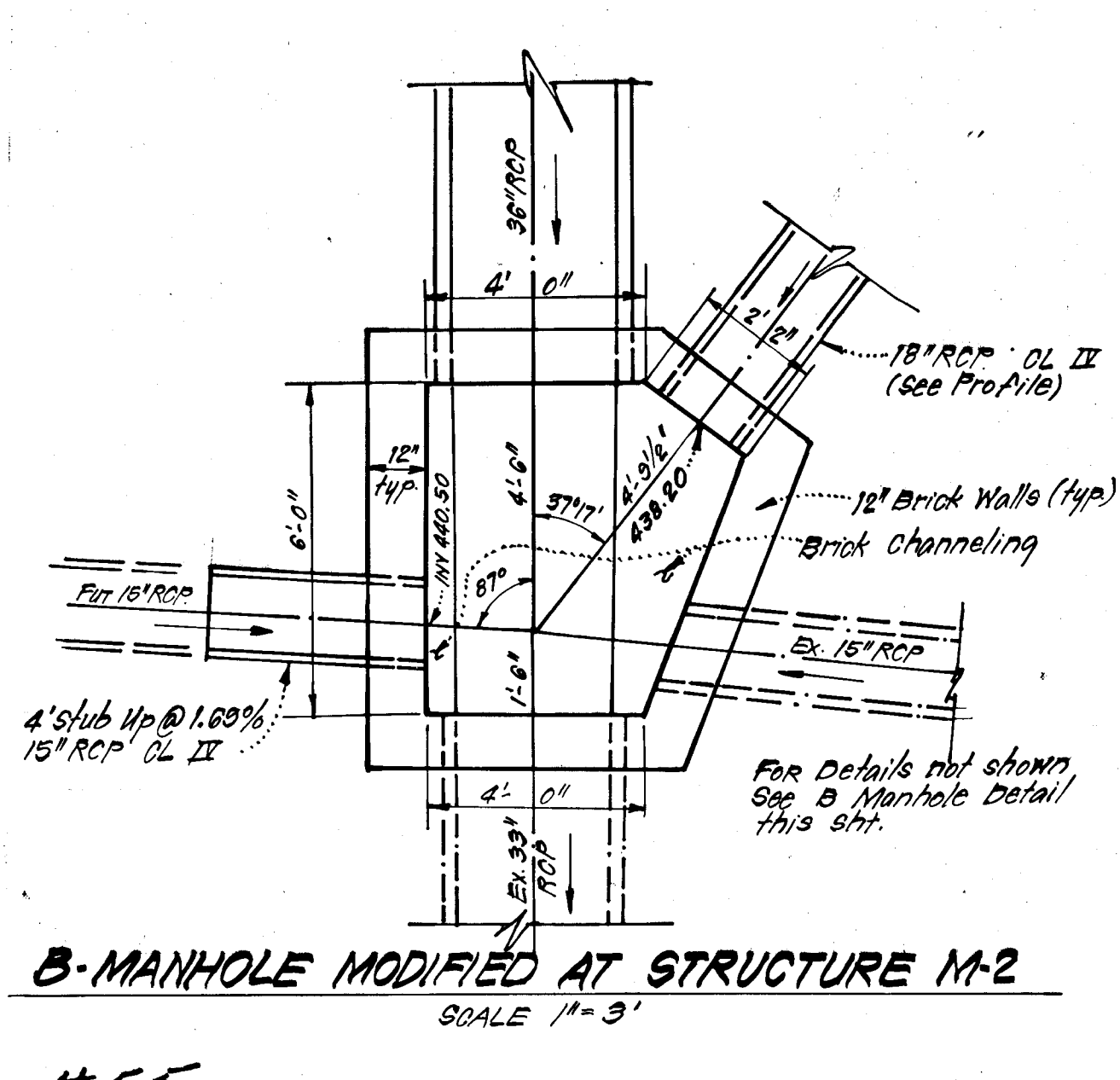
"B" MANHOLE DETAIL
 No SCALE



SIZE	TYPE	L.F.
15"	RCP CLASS II	4
18"	RCP CLASS II	36
36"	RCP CLASS II	560

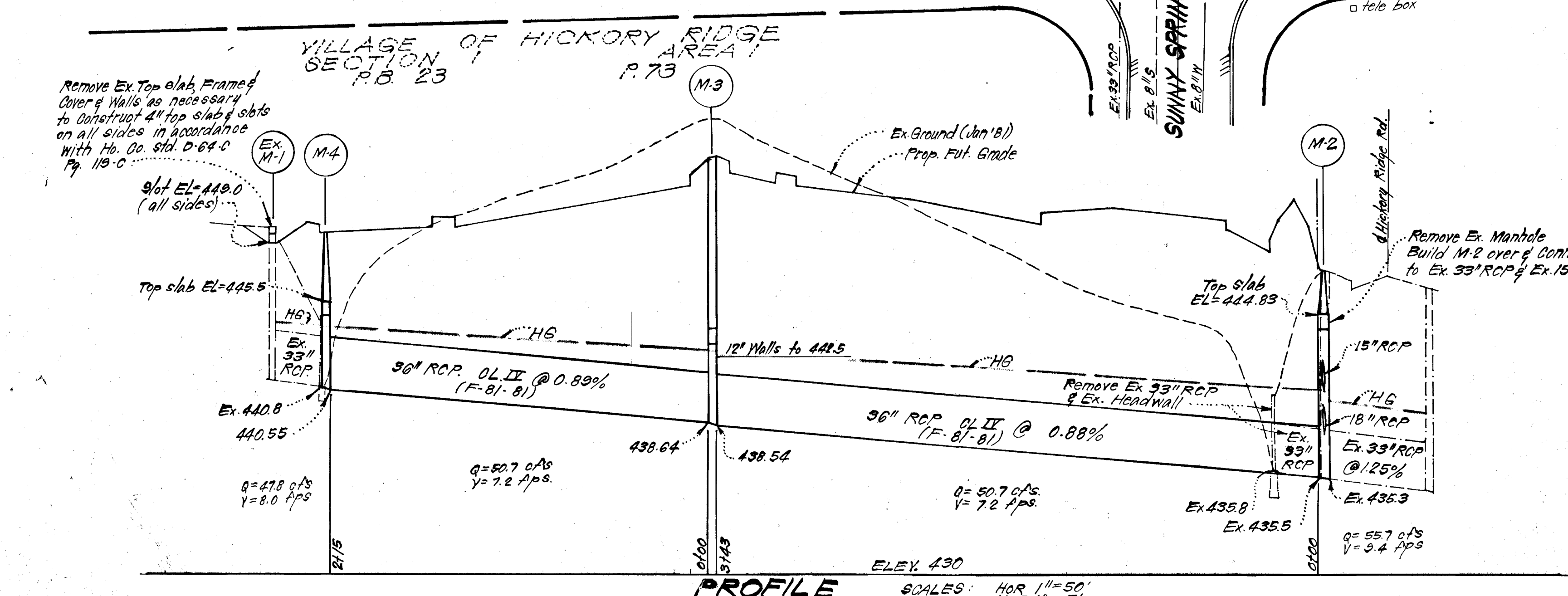
No.	TYPE	INV IN	INV OUT	TOP ELEVATION		REMARKS	LOCATION
				Upper	Lower		
M-2	B Manhole (Modified)	438.50	435.40	Meet Existing		See detail - this sht.	See Plan
M-3	A Manhole	438.64	438.54	454.00		H.C. Std. Dwg. D-103 Pg. 158 54'Ø	See Plan
M-4	B Manhole	440.80	440.55	449.60		See detail this sht.	48'Øsq. See Plan

STRUCTURE SCHEDULE

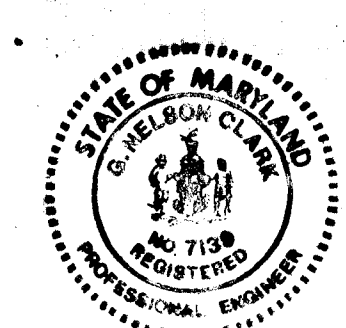


B-MANHOLE MODIFIED AT STRUCTURE M-2
 SCALE 1"=3'

#55



PROFILE
 SCALE: HOR 1"=50', VER 1"=5'



3-19-81

F-81-81 & SDP 81-105-C
 APPROVED: Department of Public Works
 Chief, Bureau of Engineering
 APPROVED: Howard County Office of Planning and Zoning
 Chief, Division of Land Development and Zoning Administration

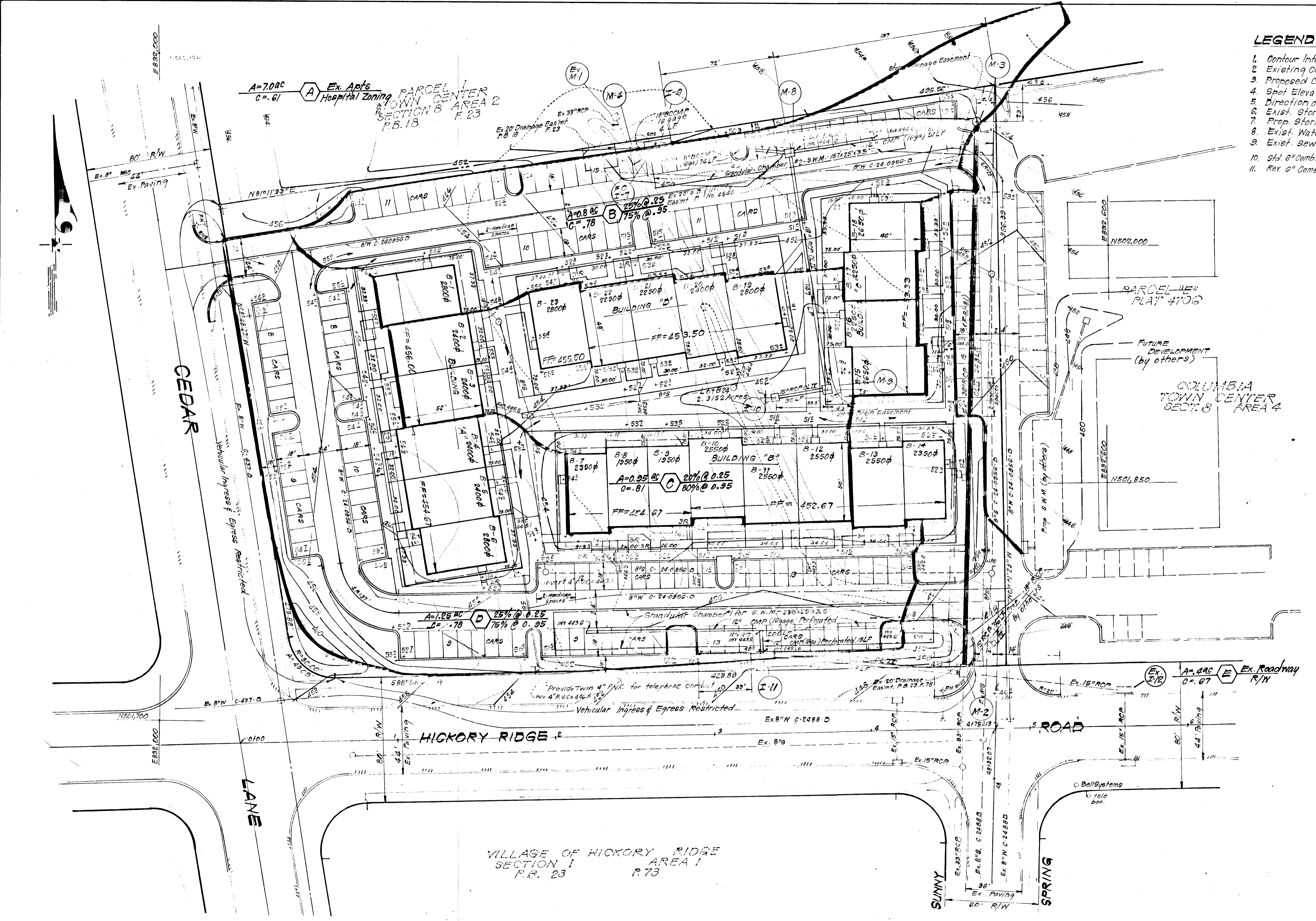
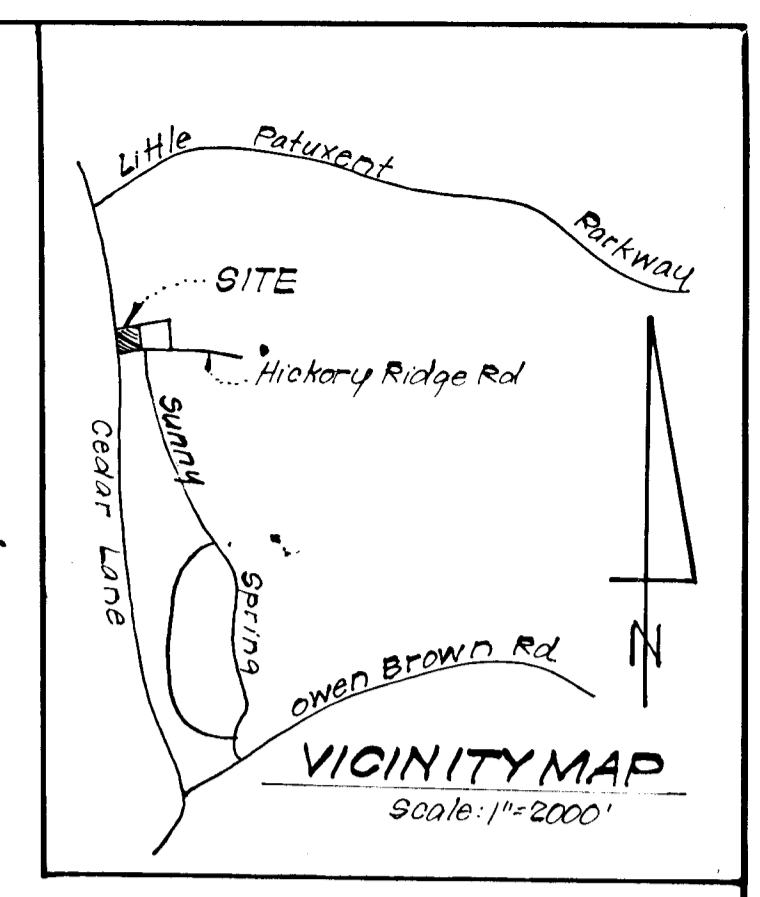
CLARK · FINEFROCK & SACKETT
 ENGINEERS · PLANNERS · SURVEYORS
 11314 LOCKWOOD DRIVE · SILVER SPRING, MARYLAND 20904 · (301) 593-3400

DESIGNED: D.A.B. SCALE: As shown
 DRAWN: K.I.M. DRAWING: 10F-2
 CHECKED: D.A.B. JOB NO.: 80-078
 DATE: 3-17-81 FOR: CENTENNIAL CONTRACTORS 7013 Backlick Road, Springfield, VA 22151 FILE NO.: 80-078-D

F-81-81

LEGEND

- 1. Contour Interval 2 Ft.
- 2. Existing Contour - - - - -
- 3. Proposed Contour - - - - -
- 4. Spot Elevation + 40.5
- 5. Direction of Drainage →
- 6. Exist. Storm Drain - - - - -
- 7. Prop. Storm Drain - - - - -
- 8. Exist. Water Line - - - - -
- 9. Exist. Sewer Line - - - - -
- 10. Std. 6" Comb. Curb & Gutter - - - - -
- 11. Rev. 6" Comb. Curb & Gutter - - - - -



#55



F-81-81 & SDP 81-105-C		
APPROVED: Department of Public Works		
<i>William C. Rice</i>	4/1/81	Date
APPROVED: Howard County Office of Planning & Zoning		
<i>William C. Rice</i>	4/3/81	Date
CHIEF, Division of Land Development and Zoning Administration		
CLARK • FINEFROCK & SACKETT		
ENGINEERS • PLANNERS • SURVEYORS		
11315 LOCKWOOD DRIVE SILVER SPRING, MARYLAND 20904 (301) 593 3400		
DESIGNED	DRAINAGE AREA MAP	SCALE
DAB	PARCEL 131	1"=30'
DRAWN		DRAWING
K.I.W.		2 OF 2
CHECKED		JOB NO.
DAB		80-076
DATE		FILE NO.
3-17-81		80-076-D