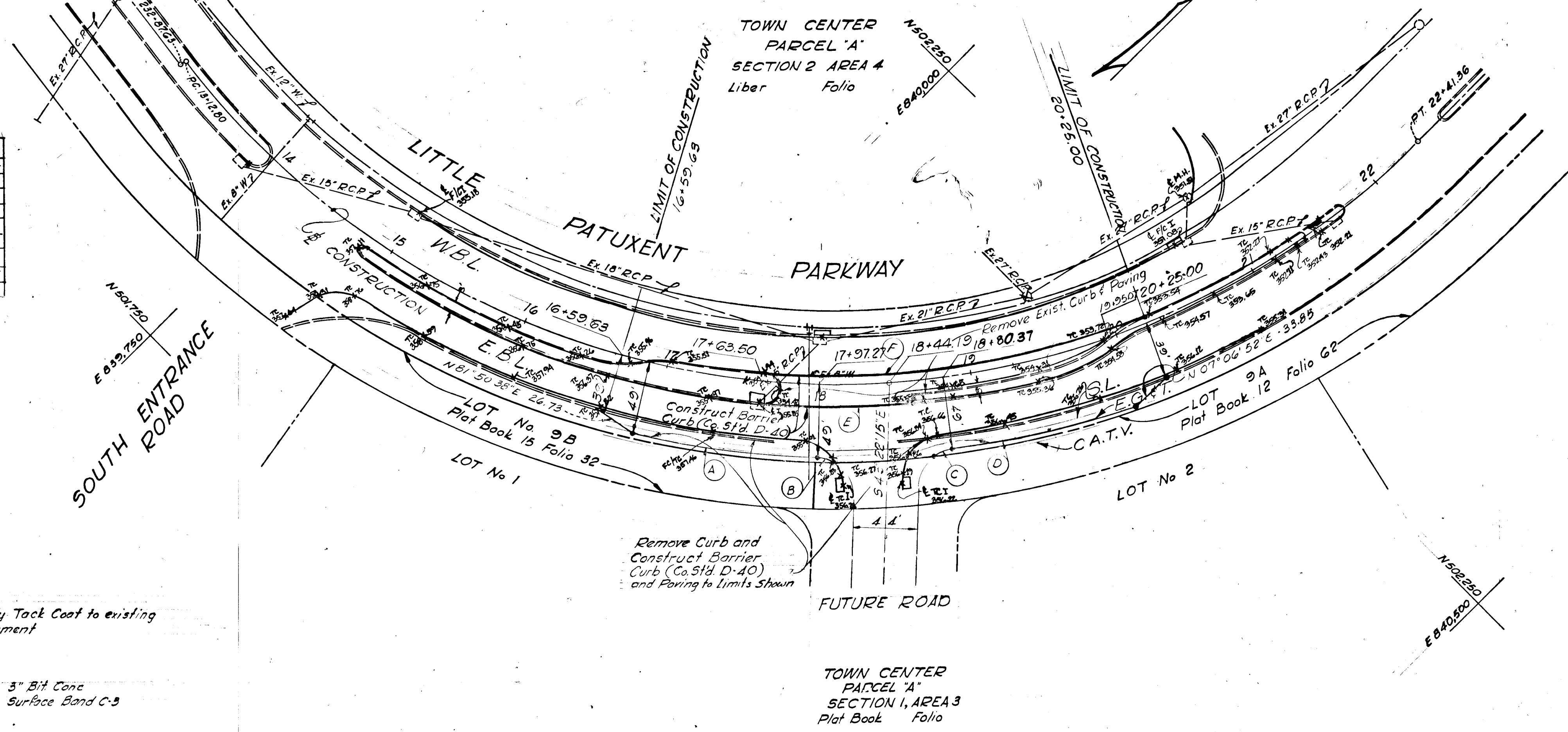
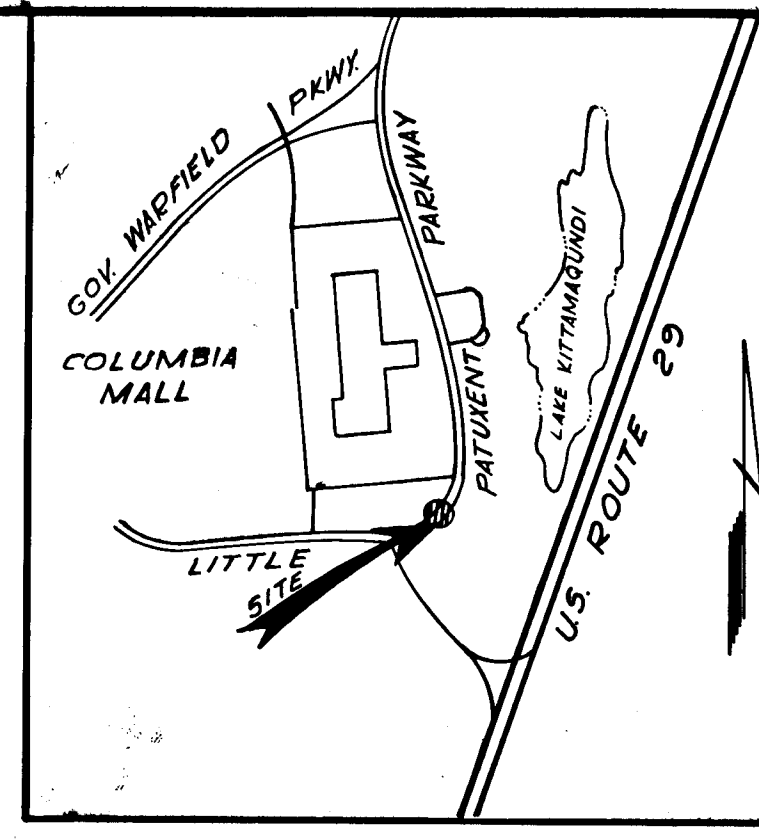


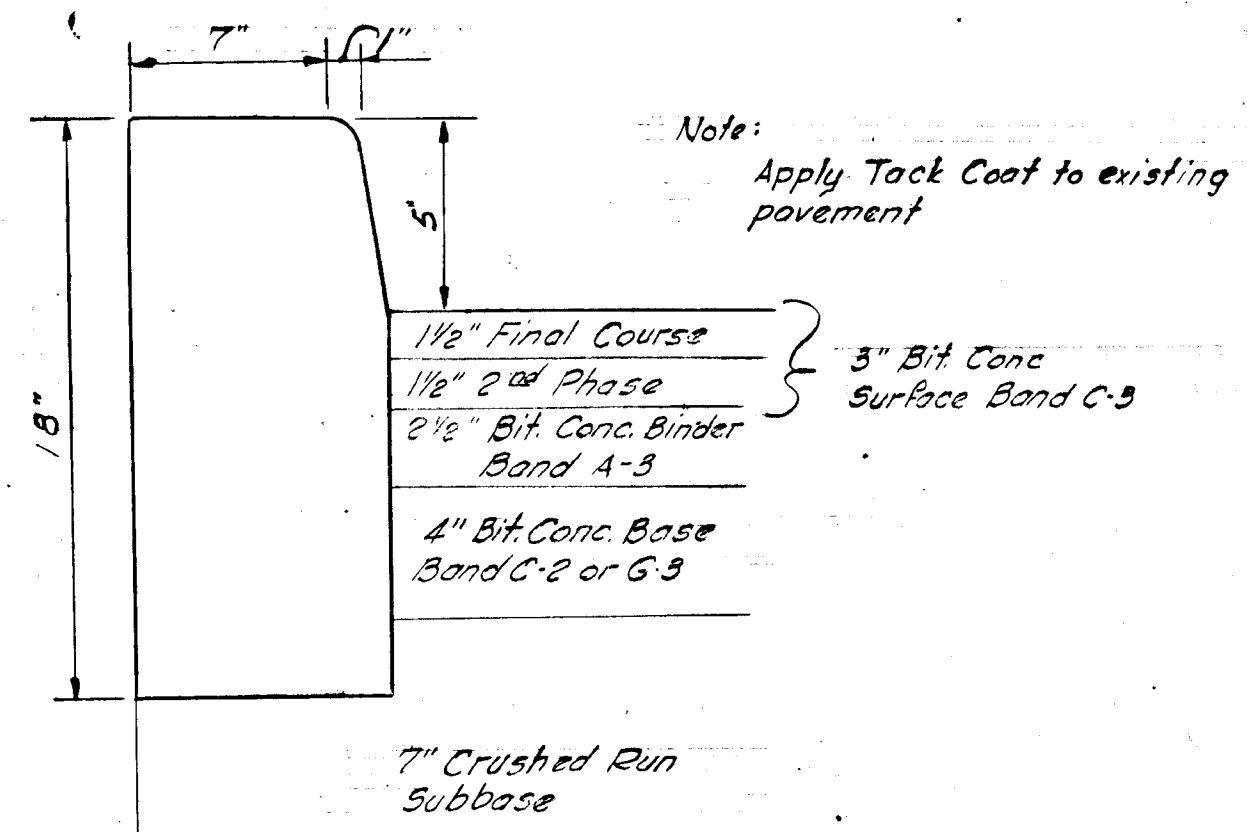
CURVE DATA						
No	Radius	A	Arc	Tan	Chord	Chord Brg.
A	554.67	12°02'37"	125.00	62.73	124.77	N33°52'24"E
B	25.00	32°13'38"	14.06	7.22	13.88	N62°44'37"E
C	25.00	32°13'38"	14.06	7.22	13.88	N21°47'29"E
D	554.67	12°02'37"	125.00	62.73	124.77	N31°52'29"E
E	560.67	10°07'57"	93.15	49.71	93.02	N45°06'36"E
F	540.67	27°27'28"	259.10	132.09	256.63	N36°26'50"E
G	545.67	27°30'00"	263.56	132.22	260.51	N48°45'00"E

ESTIMATE OF QUANTITIES			
No	Description	Quantity	Unit
1	3" Bituminous Concrete Surface	355.5	S.Y.
2	1 1/2" Bituminous Concrete Binder	355.5	S.Y.
3	4" Bituminous Concrete Base	355.5	S.Y.
4	Barrier Curb D-40	610	L.F.
5	Roadway Excavation	200	C.Y.
6	Topsail 4"	400	S.Y.
7	Remove Exist Paving	400	S.Y.
8	7" Crusher Run Subbase	355	S.Y.

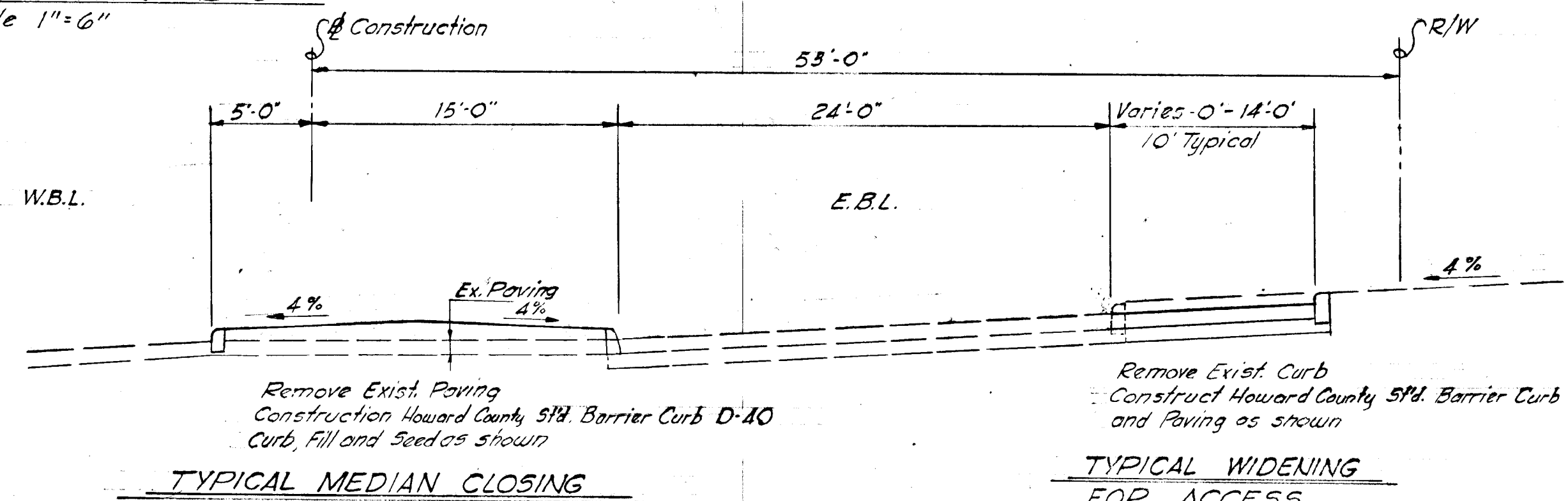


GENERAL NOTES

1. Zoning: Employment Center (Commercial)
2. Public Water and Sewer System to be made available and utilized.
3. All building restriction lines shall conform to Final Development Plan criteria.
4. The lots or parcels shown on this plot are subject to the Supplement Sewer-in-aid-of construction Charge created by Section 20.311A of the Howard County Code and to Executive Order No. 72-D.
5. Permanent Seeding shall consist of commercial fertilizer (5-10-10) @ 1000#/Ac, lime @ 1 Ton/Ac and ry 31 tall fescue @ 200#/Ac. Mulch @ 1/2 ton/Ac with thoroughly threshed wheat, rye, or oats straw. Mulch shall be anchored spraying with liquid asphalt @ .16 gal/S.Y. or emulsified asphalt @ .04 gal/S.Y.
6. The contractor shall notify the Baltimore Gas and Electric Company 72 hours prior to any construction in the vicinity of any gas and electric facilities by calling 769-8900. The contractor shall notify the C.P. Telephone Company prior to any construction in the vicinity of any Telephone Company facilities by calling collect 539-8000 in Baltimore.
7. All road construction shall conform with the Howard County Road Code and Standard Specification.



HOWARD COUNTY STANDARD BARRIER CURB D-40 AND PAVING SECTION D-9 Scale 1"=6"



TOP OF CURB GRADES						
Sta	CPGL	WPGL	TC WBL	TC EBL	TC EHL	
16+59.63	355.92					357.78
16+80	355.82					356.28
17+00	355.72					358.18
17+25	355.60					358.06
17+50	355.48					357.94
17+63.5	355.41	354.81	355.23	355.83		
17+75	355.35	354.75	355.17	355.77	357.81	
18+00	355.25	354.62	355.04	355.64	357.68	
17+97.27	355.27					357.70
18+00	355.27					357.92
18+25	355.10	354.50	354.92	355.52		
18+50	354.98	354.38	354.80	355.40		
18+61	354.92			355.34		
18+70	354.88					357.68
18+75	354.85	354.25	354.67			
18+80	354.82					357.28
19+00	354.72	354.12	354.54			357.18
19+25	354.60					357.06
19+25	354.60	354.00	354.42			357.06
19+50	354.45	353.85	354.28			356.91
19+54.26	354.43					356.89
19+75	354.26	353.66	354.10			356.72
20+00	354.14	353.55	353.87			356.48
20+25	353.73	353.17	353.59			355.59

APPROVED
 DIVISION OF LAND DEVELOPMENT AND TRANSPORTATION PLANNING
 HOWARD COUNTY, MARYLAND
 DATE 5/31/74
 F-80-73
 DEPARTMENT OF PUBLIC WORKS
 CHIEF, BUREAU OF HIGHWAY 5/31/74
 OFFICE OF PLANNING AND ZONING
 CHIEF DIVISION OF LAND DEVELOPMENT AND TRANSPORTATION PLANNING DATE

stottler stagg & associates
 affiliate
brevard engineering company
 architects engineers planners

TEACHERS BUILDING
 COLUMBIA, MARYLAND

COLUMBIA TOWN CENTER
 SECTION I, AREA 3
 5TH ELECTION DISTRICT
 HOWARD COUNTY, MARYLAND

OWNER AND DEVELOPER
 HOWARD RESEARCH AND
 DEVELOPMENT CORPORATION
 COLUMBIA, MARYLAND

CONSTRUCTION PLAN
 MEDIAN CLOSING AND ACCESS ON TO
 LITTLE PATUXENT PARKWAY

DWG. NO. SHT. 1 OF 1
 JOB NO. 74133
 SCALE: 1"=50'
 DATE 5-28-74