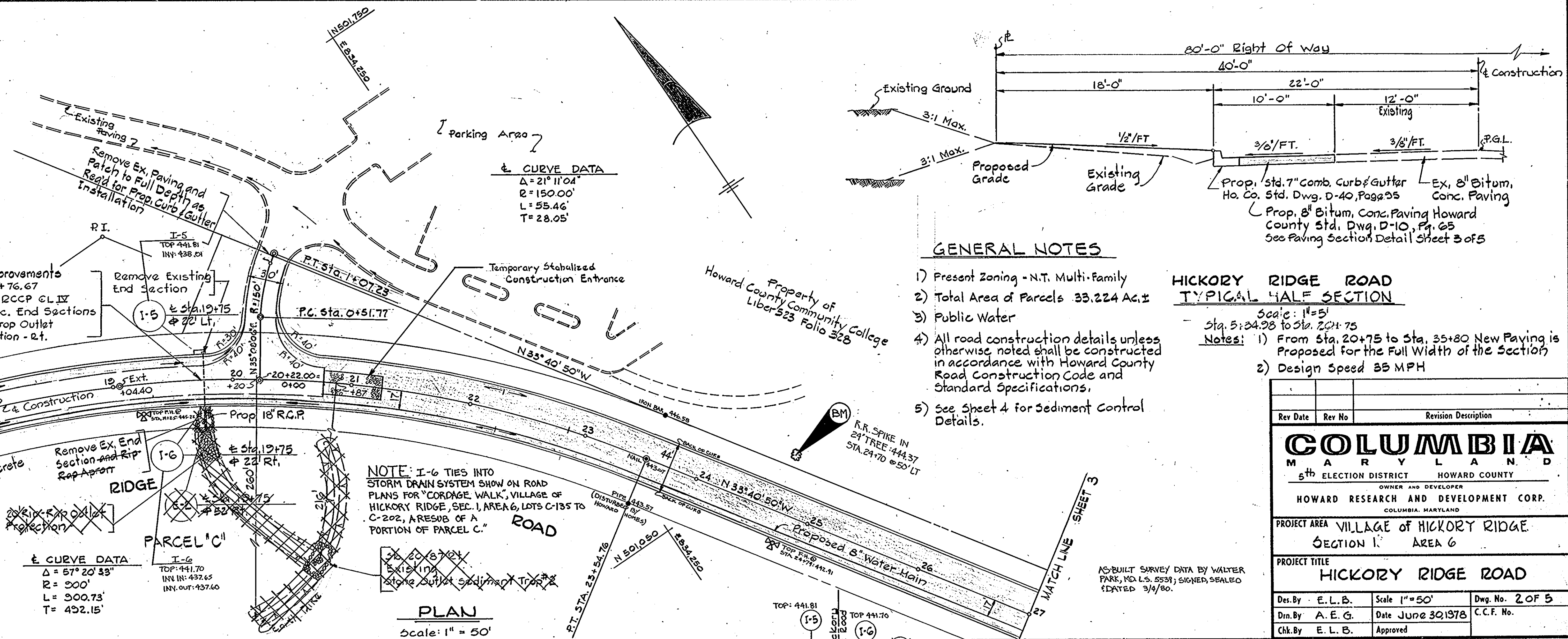


STRUCTURE SCHEDULE						
STRUC. NO.	TYPE	INV. IN	INV. OUT	TOP ELEV.	DWG. NO.	PAGE NO.
E-4	C	393.70	393.70	393.70	D-52	107
L-9	A-5 deflectors	393.70	393.70	393.70	D-64-A	119-A
L-7	A-10 deflectors	393.70	393.70	393.70	D-64-A	119-A
L-8	A-10 deflectors	393.70	393.70	393.70	D-64-A	119-A
F-3	C	393.70	393.70	393.70	D-52	107
L-10	A-10 deflectors	393.70	393.70	393.70	D-64-A	119-A
F-5	C	393.70	393.70	393.70	D-52	107
L-5	A-5	393.70	393.70	393.70	D-64-A	119-A
L-6	A-5	393.70	393.70	393.70	D-64-A	119-A
F-2	C	393.70	393.70	393.70	D-52	107
L-3	A-10	393.70	393.70	393.70	D-64-A	119-A
L-4	A-5	393.70	393.70	393.70	D-64-A	119-A
F-1	C	393.70	393.70	393.70	D-52	107
MH-1	Std. MH	441.31	435.75	447.34	D-103	158
L-1	A-5	442.00	441.30	441.30	D-64-A	119-A
L-2	A-5	442.00	442.00	442.00	D-64-A	119-A



GENERAL NOTES

- 1) Present Zoning - N.T. Multi-Family
- 2) Total Area of Parcels 33.224 Ac.±
- 3) Public Water
- 4) All road construction details unless otherwise noted shall be constructed in accordance with Howard County Road Construction Code and Standard Specifications.
- 5) See Sheet 4 for Sediment Control Details.

HICKORY RIDGE ROAD TYPICAL HALF SECTION

- Scale: 1"=5'
- Sta. 5: 24+28 to Sta. 20+75
- Notes:
- 1) From Sta. 20+75 to Sta. 35+80 New Paving is Proposed for the Full Width of the Section
 - 2) Design Speed 35 MPH

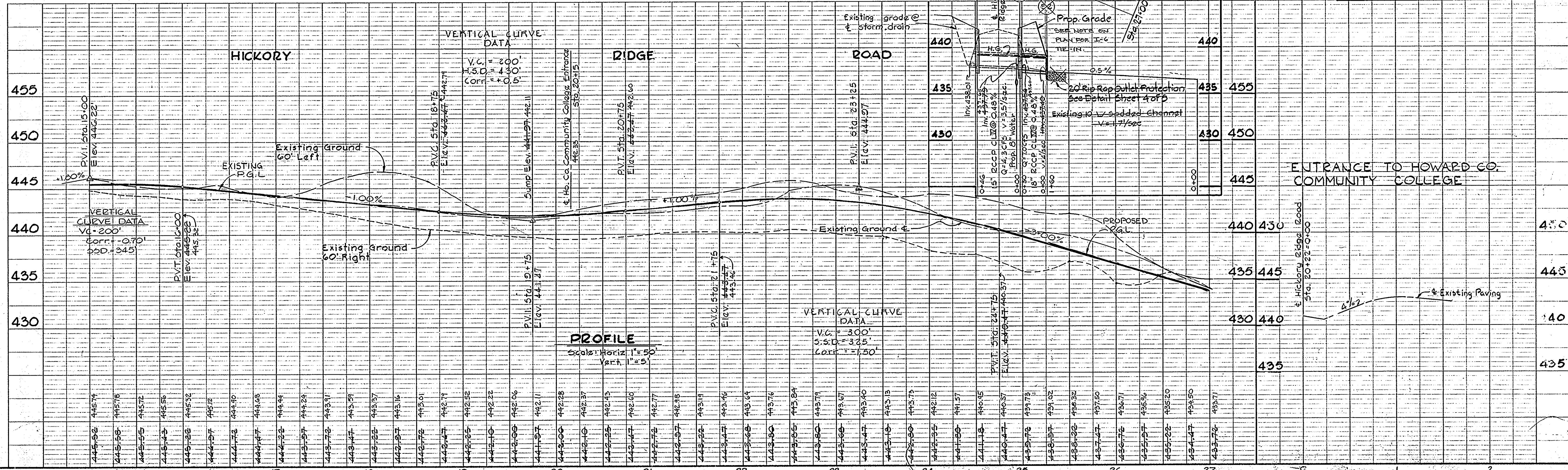
Rev. Date	Rev. No.	Revision Description

COLUMBIA MARYLAND
5th ELECTION DISTRICT HOWARD COUNTY
OWNER AND DEVELOPER
HOWARD RESEARCH AND DEVELOPMENT CORP.
COLUMBIA, MARYLAND

PROJECT AREA: VILLAGE OF HICKORY RIDGE
SECTION: AREA 6

PROJECT TITLE: HICKORY RIDGE ROAD

Des. By: E. L. B. Scale: 1"=50' Dwg. No. 2 OF 5
 Din. By: A. E. G. Date: June 30, 1978 C.C.F. No.
 Chk. By: E. L. B. Approved



APPROVED: Department of Public Works
[Signature]
 Chief, Bureau of Engineering
 Date: 11-27-78

APPROVED: Office of Planning and Zoning
[Signature]
 Chief, Division of Land Development
 Date: 11-15-78

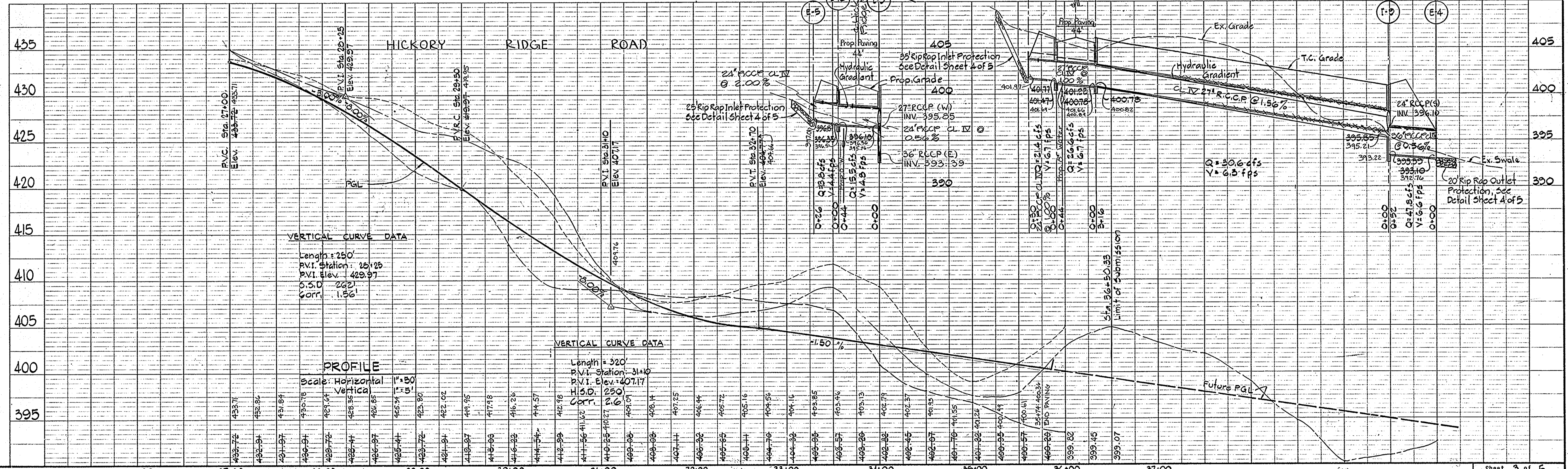
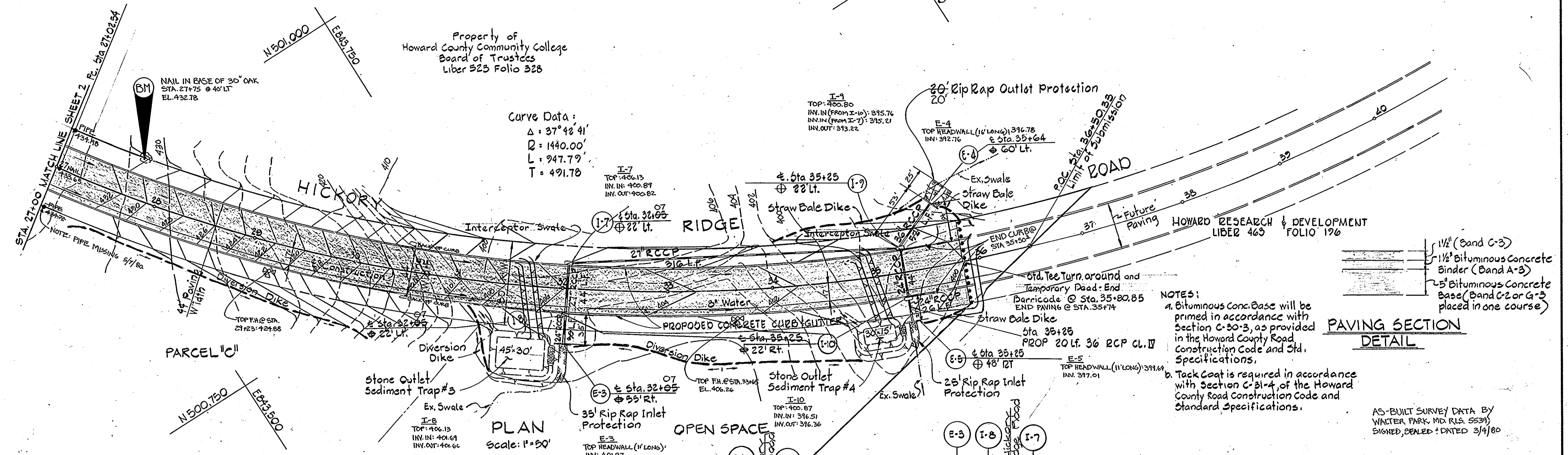
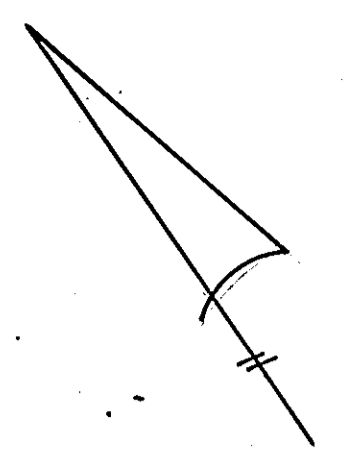
DEVELOPER'S CERTIFICATE
 I certify that all development and/or construction will be done according to this plan of development and plan for Erosion and Sediment Control, and I also authorize periodic onsite inspection by the Howard Soil Conservation District or their authorized agents, as are deemed necessary. Deviation from this plan will not be made unless authorized by the Howard Soil Conservation District.
[Signature]
 Joseph A. Nacker Jr.
 Date: 11/27/78

PURDUM & JESCHKE
CONSULTING ENGINEERS
LAND SURVEYORS
 1023 North Calvert Street
 Baltimore, Maryland 21202 301/837-0194

Reviewed for Howard County Soil Conservation District and meets Technical Requirements.
[Signature]
 U.S. Soil Conservation Service
 Date: 11-15-78

This development plan is approved for Soil Erosion and Sediment Control by the Howard Soil Conservation District.
[Signature]
 District Coordinator
 Date: 11-15-78
 Howard Soil Conservation District

ENGINEER'S CERTIFICATE
 I certify that this plan for Erosion and Sediment Control represents a practical and workable plan based on my personal knowledge of the site conditions and that it was prepared in accordance with the requirements of the Howard Soil Conservation District.
[Signature]
 Date: 11/20/78



APPROVED: Department of Public Works
 Chief, Bureau of Engineering
 Date: 11-27-78

APPROVED: Office of Planning & Zoning
 Chief, Division of Land Dev.
 Date: 11-28-78

Reviewed for Howard County Soil Conservation District and meets technical requirements.
 District Coordinator
 Date: 11-15-78

DEVELOPER'S CERTIFICATE
 I certify that all development and/or construction will be done according to this plan of development and plan for Erosion and Sediment Control and I also authorize periodic onsite inspection by the Howard Soil Conservation District or their authorized agents, as are deemed necessary. Deviation from this plan will not be unless authorized by the Howard Soil Conservation District.

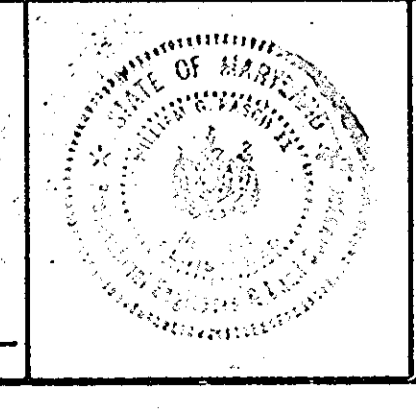
Joseph A. Neckar Jr.
 Date

PURDUM & JESCHKE
CONSULTING ENGINEERS
LAND SURVEYORS

1023 North Calvert Street
 Baltimore, Maryland 21202 301/837-0194

ENGINEER'S CERTIFICATE
 I certify that this plan for Erosion and Sediment Control represents a practical and workable plan based on my personal knowledge of the site conditions and that it was prepared in accordance with the requirements of the Howard Soil Conservation District.

William J. Ravelle
 Date: 7/20/78



COLUMBIA, MARYLAND
 VILLAGE OF HICKORY RIDGE

5th. Election District
 Section 1
 Tax Map '35

Howard County, Maryland
 Area: 6
 Parcels: 46, 49

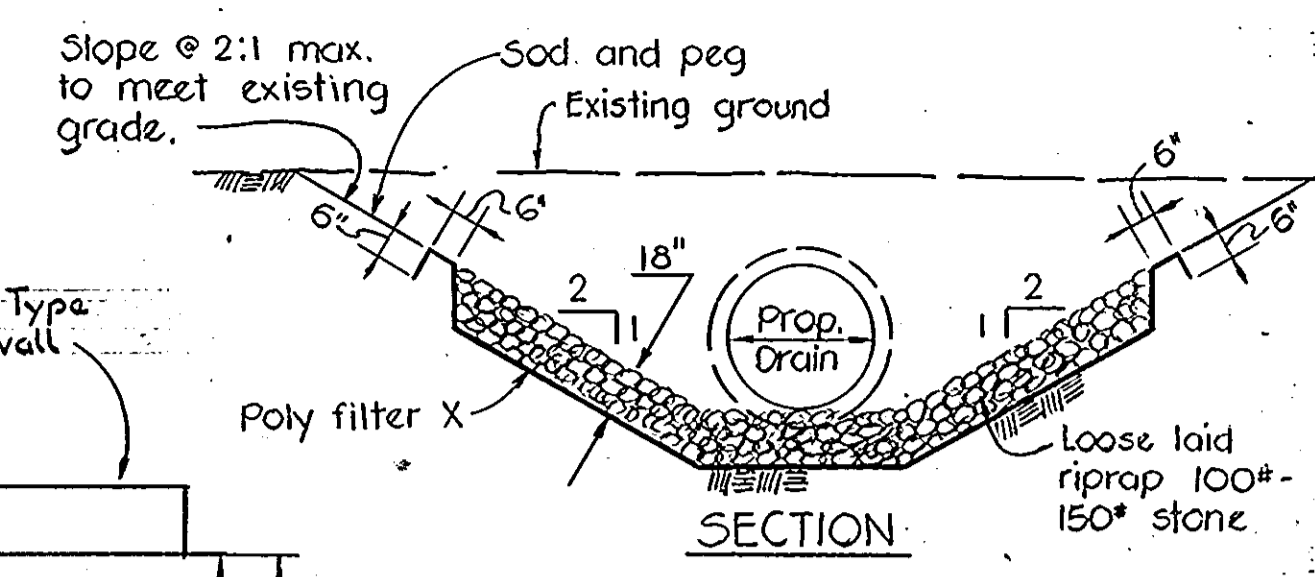
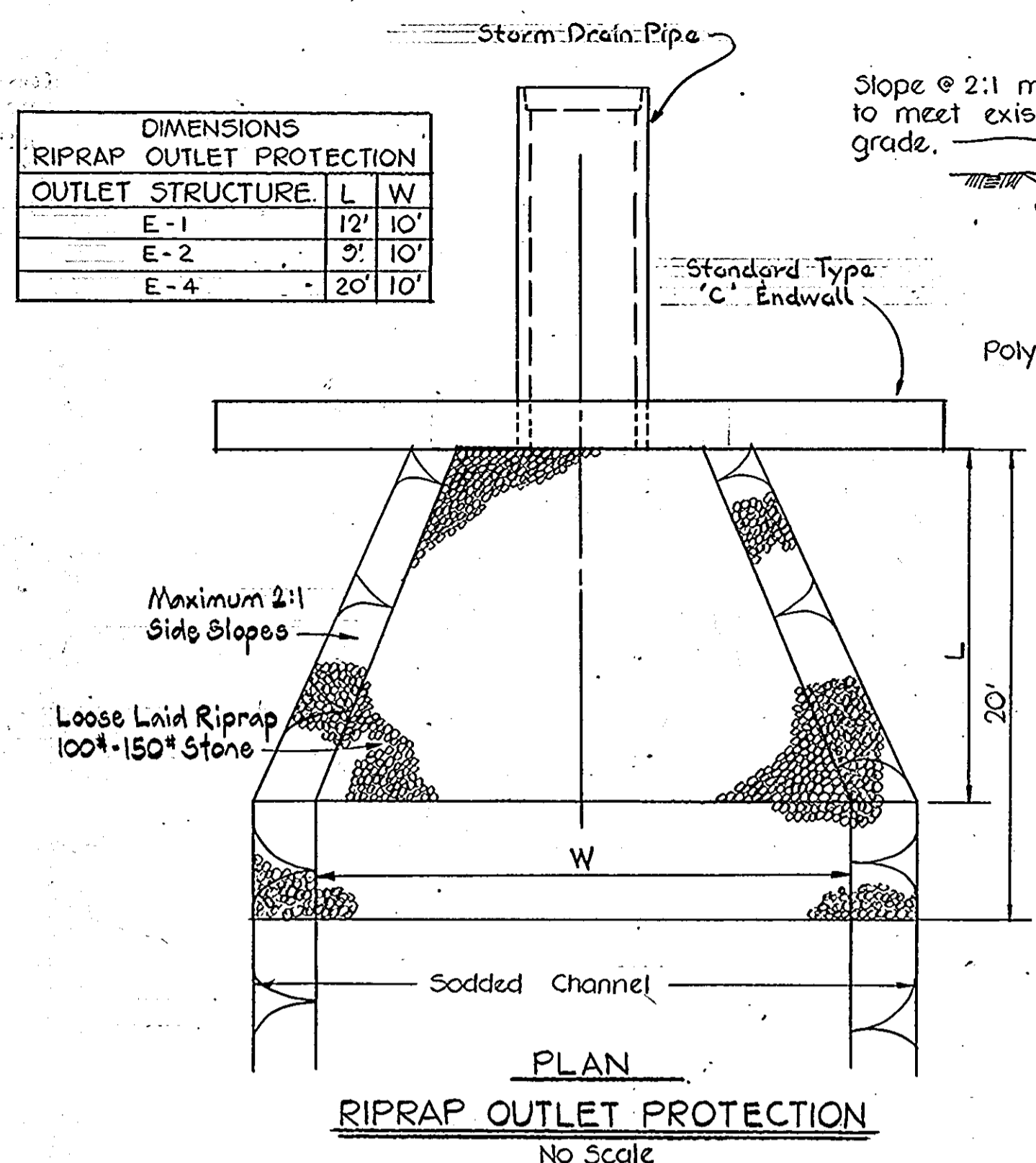
Scale: As shown
 June 30, 1978

Revisions

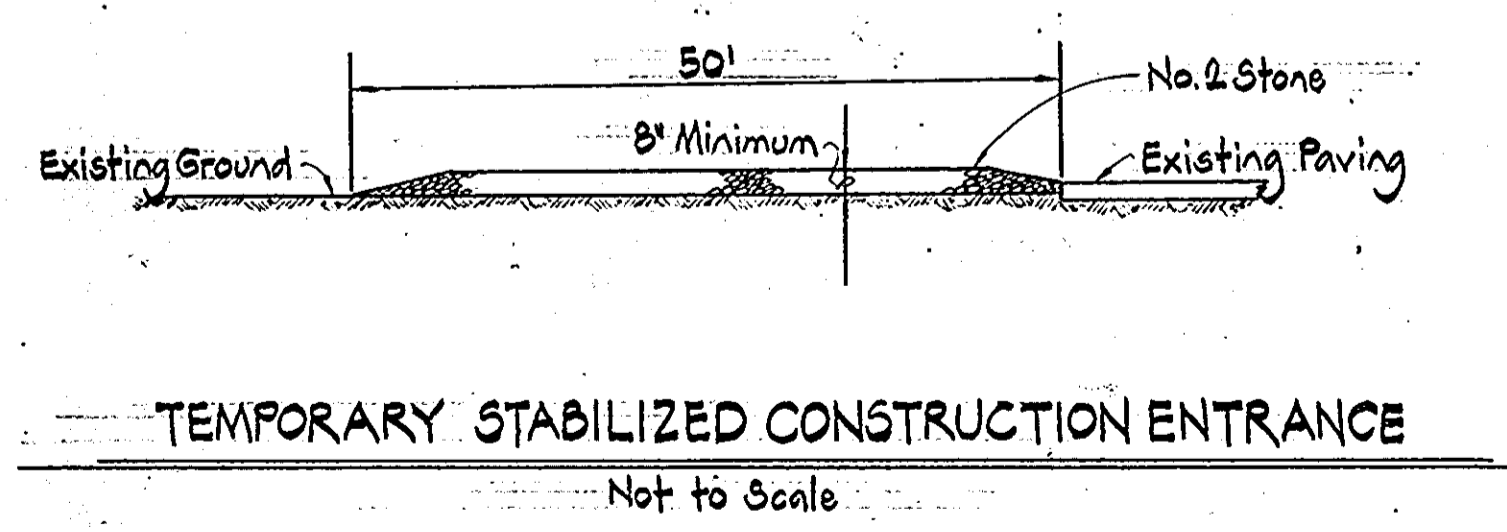
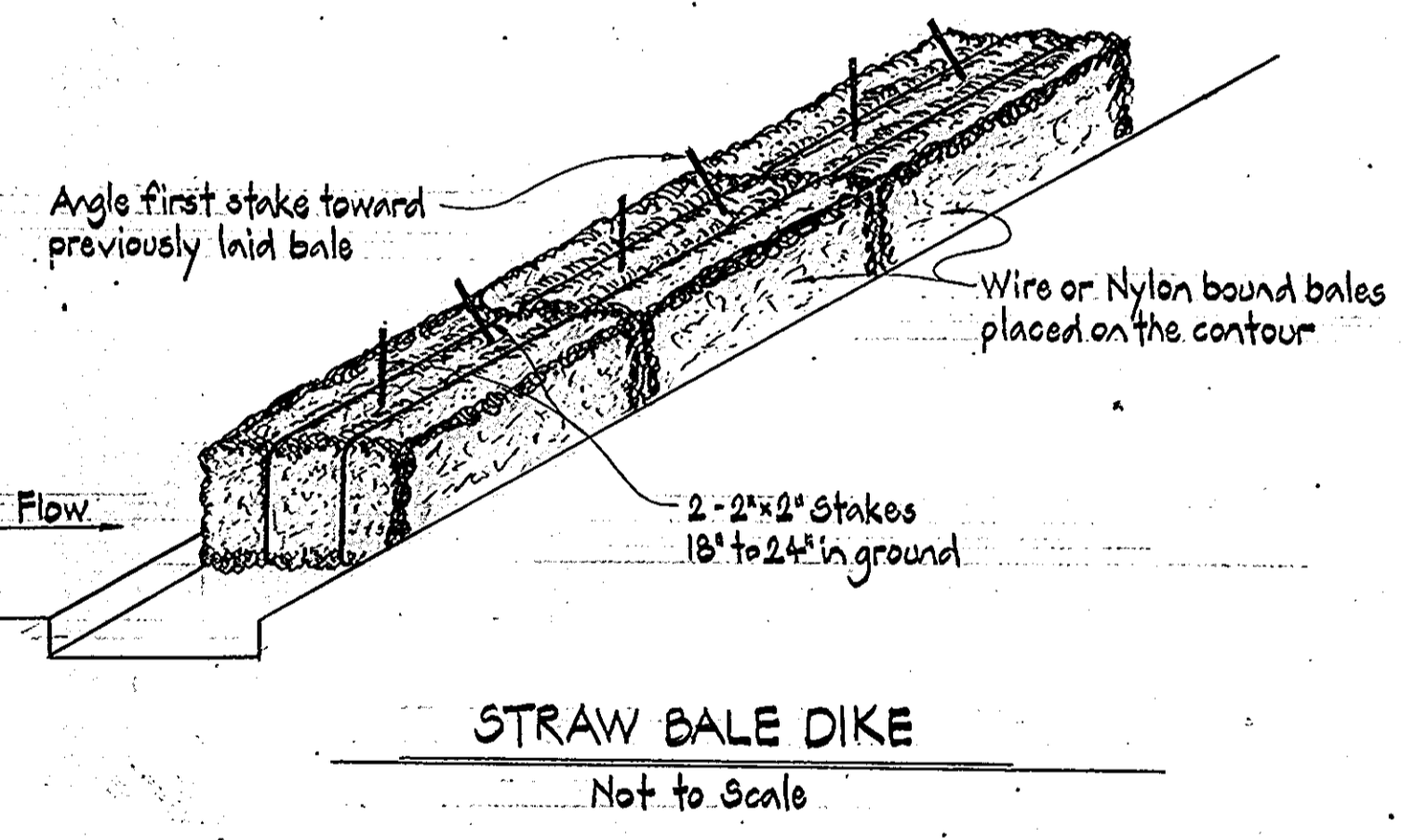
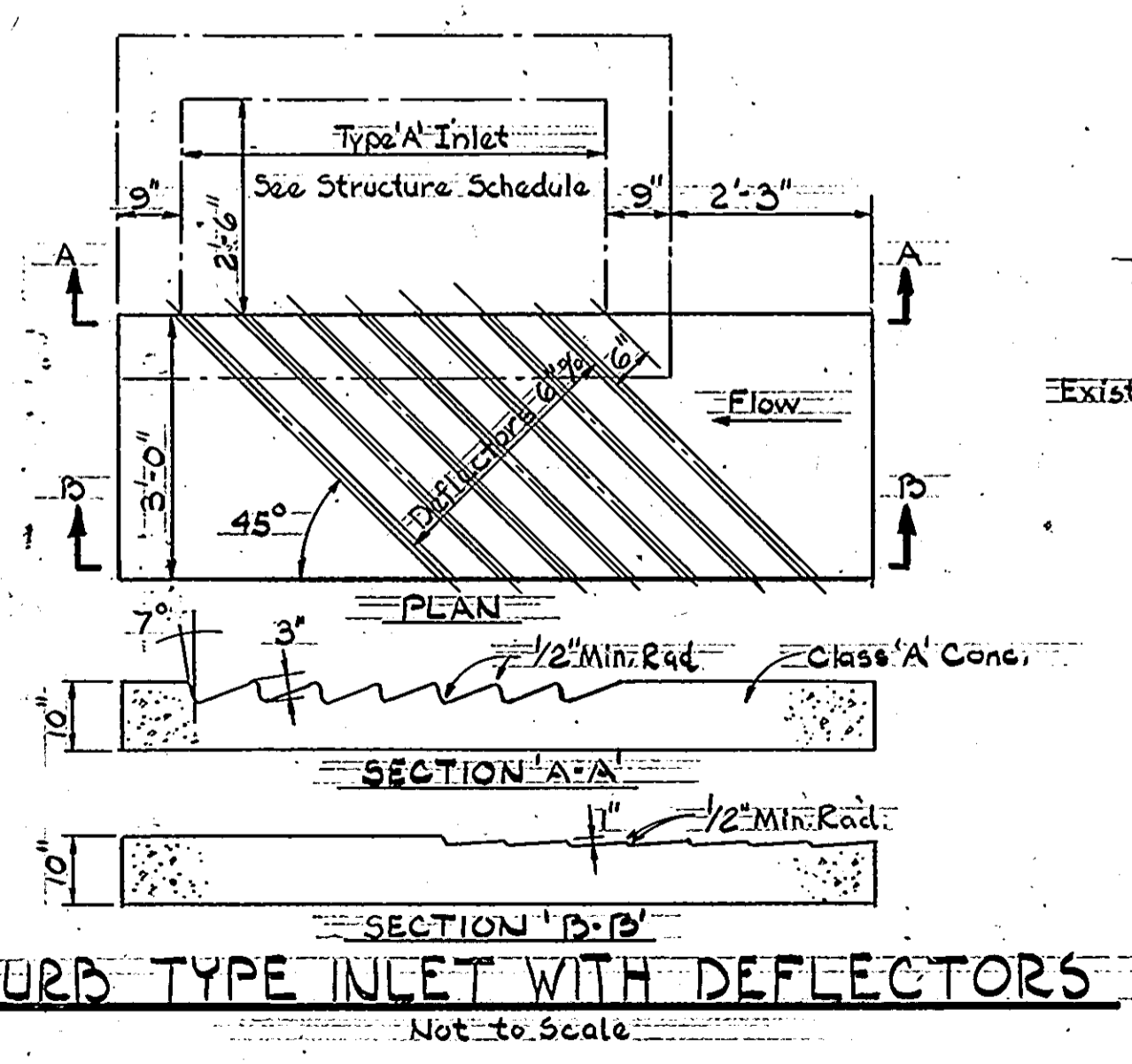
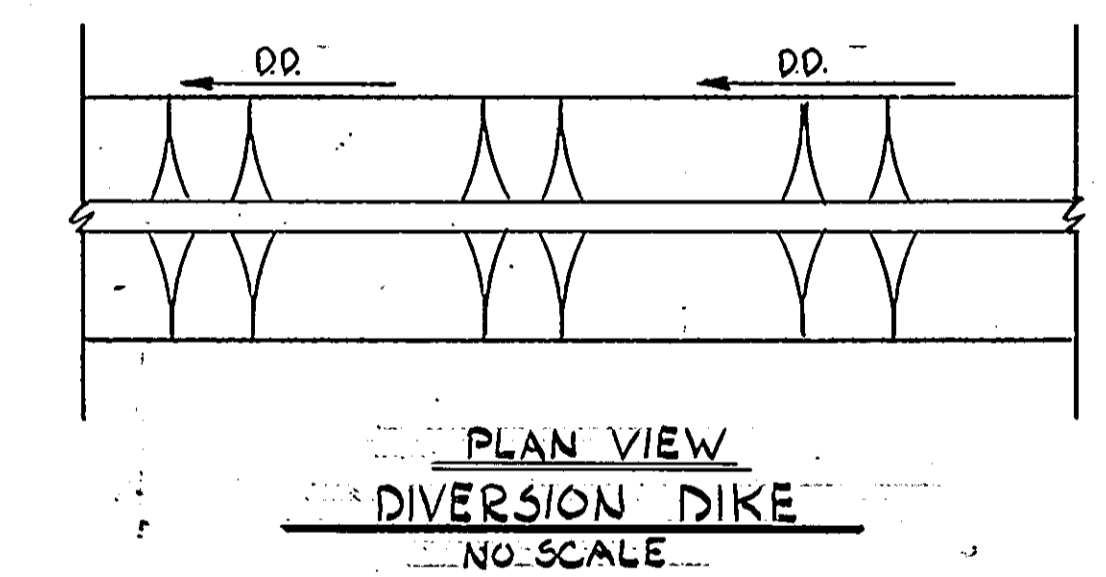
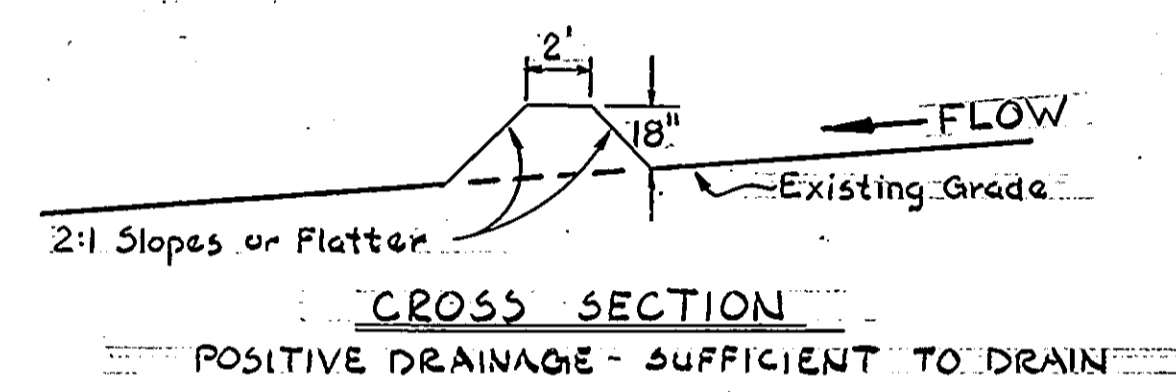
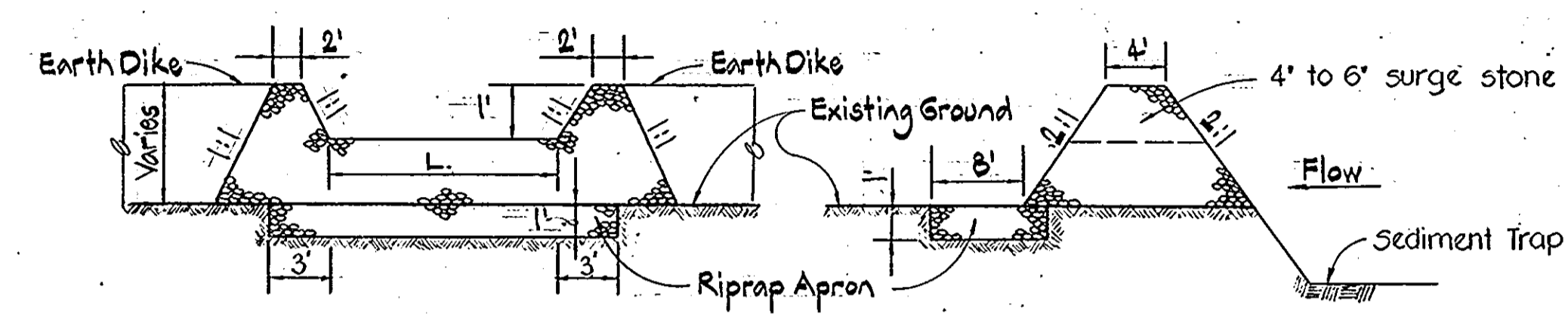
Designed by: W.G.R.
 Drawn by: A.E.G.
 Checked by: W.G.R.

F-79-48 AS-BUILT AUG. 1983

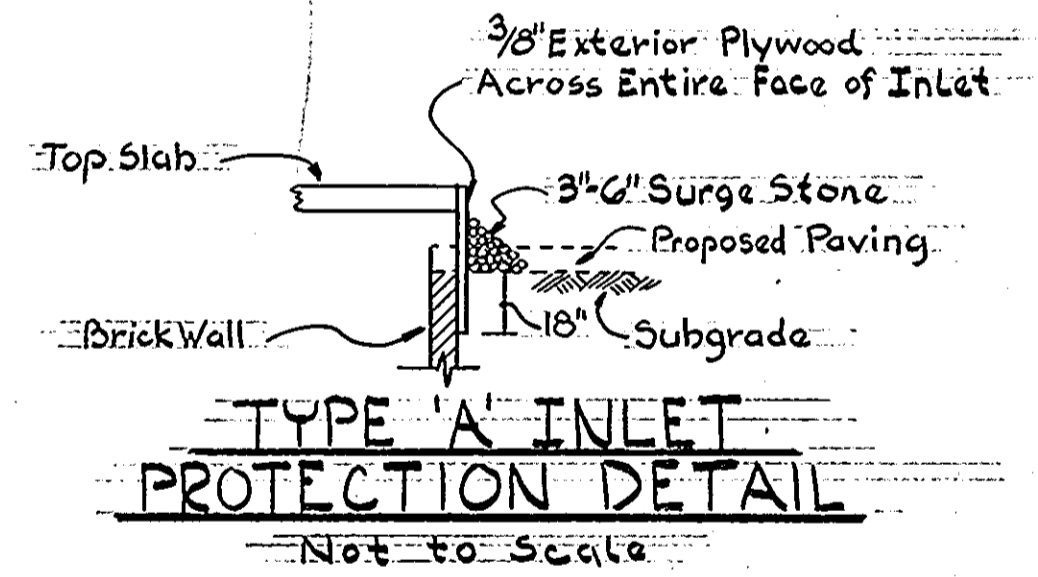
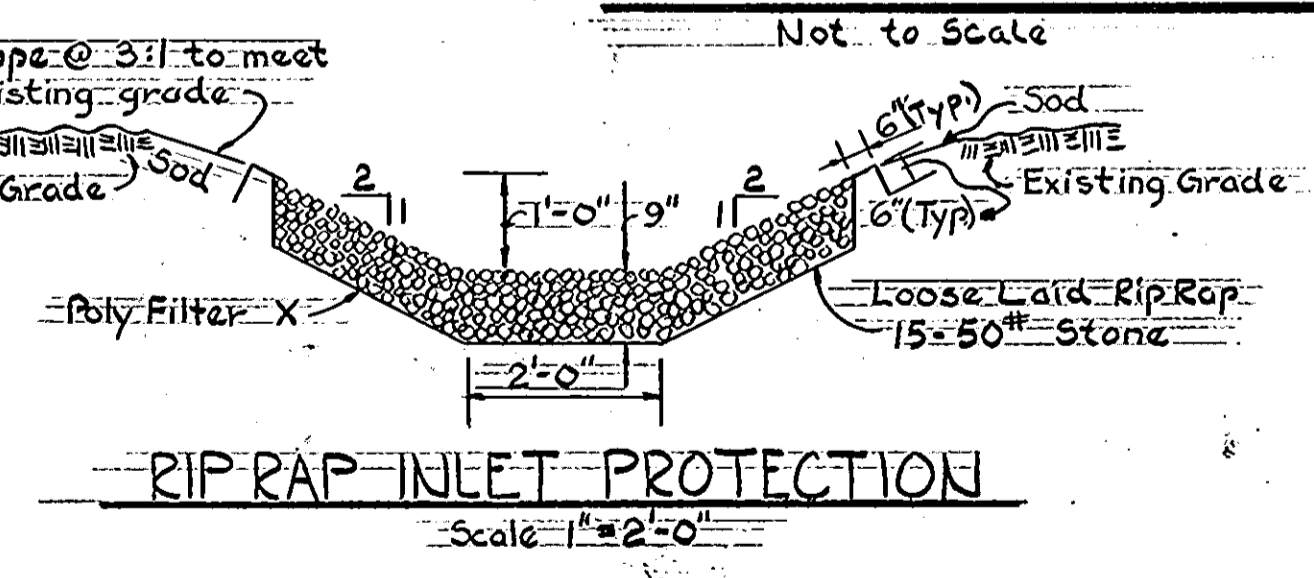
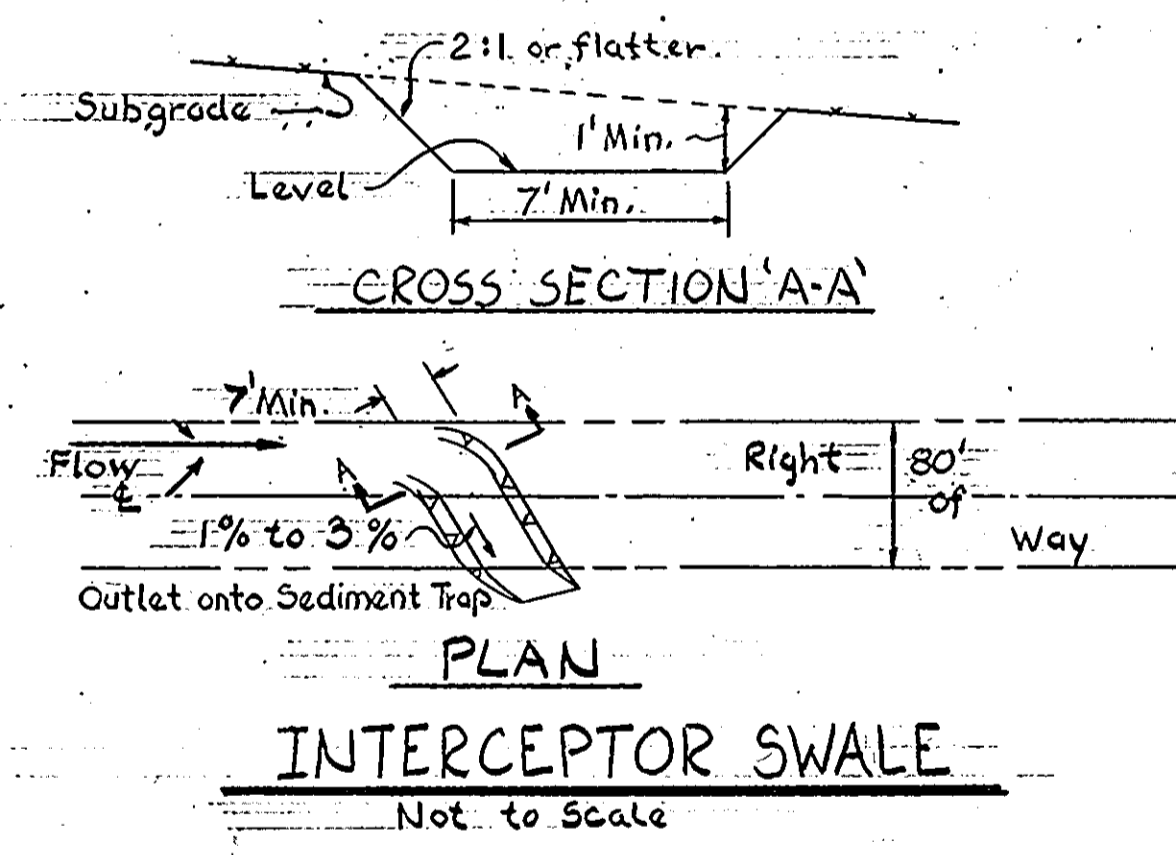
DIMENSIONS		
RIPRAP OUTLET PROTECTION		
OUTLET STRUCTURE	L	W
E-1	12'	10'
E-2	9'	10'
E-4	20'	10'



SEDIMENT TRAP DATA				
DESIGN FEATURES	SED. TRAP #1	SED. TRAP #2	SED. TRAP #3	SED. TRAP #4
Drainage Area	3.7 Ac.	1.8 Ac.	2.23 Ac.	0.68
Disturbed Area	1.6 Ac.	1.7 Ac.	2.23 Ac.	0.68
Volume Required	6825 C.F.	3240 C.F.	4014 C.F.	1224 C.F.
Volume Provided	7100 C.F.	3360 C.F.	4050 C.F.	1350 C.F.
Cleanout Elevation	437.5	436.0	403.5	398.5
Weir Length (L)	22 ft.	11 ft.	14 ft.	5 ft.
Depth of Trap			3 ft.	3 ft.



- CONSTRUCTION SEQUENCE**
- Widen Existing Road Construction
Sta. 5+ to Sta. 20+
- Clean sediment traps at Sta. 12+ and Sta. 20+.
 - Place storm drain system at Sta. 5+, Sta. 12+, and Sta. 19+.
 - Widen existing road to subgrade and place straw bales around proposed inlets.
 - Construct curb and gutter and pave road.
 - Seed and mulch unpaved areas as specified in the Sediment Control Notes.
 - Remove straw bales, temporary earth berms and stone filters.
 - Seed and mulch all remaining disturbed areas.
- Full Width Road Construction
Sta. 20+ to Sta. 35+
- Construct temporary construction entrance at Sta. 20+.
 - Place straw bale filter dike at Sta. 34+ to Sta. 35+.
 - Place storm drain system between Sta. 32+ and Sta. 35+.
 - Construct temporary sediment trap, Interceptor Swale and diversion dikes as shown.
 - Grade road to subgrade.
 - Construct curb and gutter and pave road.
 - Seed and mulch unpaved areas as specified in the Sediment Control Notes.
 - Remove straw bales, diversion dikes, diversion swales, storm outlet filters and backfill sediment traps to original ground.
 - Seed and mulch all remaining disturbed areas.



- Specifications for the Sediment Control Details shown hereon are included in the U.S.D.A. Soil Conservation Service Standards and Specifications for soil erosion and sediment control in developing areas.
- The developer shall notify the Howard County Office of Inspection and Permits at least 24 hours prior to beginning any construction shown hereon (992-2435 or 992-2436).
- All sediment control structures to remain in place until permission for their removal has been obtained from the Howard County Office of Inspection and Permits. (992-2435 or 992-2436)
- All graded areas shall be stabilized in accordance with the following requirements:
 - Site Preparation:
 - Harrow or disc the areas to be seeded with the following materials at the specified rate to a depth of 3":
 - Pulverized limestone at 1 1/2 tons/acre.
 - Commercial fertilizer 10-10-10 at 1/2 tons/acre.
 - Super phosphate at 600 lbs./acre.
 - Seeding:
 - Sow the following seed mixture at the specified rate with a mechanical spreader:
 - Temporary - Italian or Perennial Ryegrass.
 - Permanent - (Slopes Flatter than 3:1) - Common Kentucky Bluegrass (Certified) (Slopes steeper than 3:1) - ground cover, 2:1 maximum slope allowed.
 - The seeded area shall be raked with a York Rake (minimum of 2 passes), covered and compacted with a cultipacker or other approved method.
 - Mulching:
 - Seeded areas shall be uniformly mulched immediately after seeding with unweathered small grain straw at the rate of 1 1/2 to 2 tons/acre.
 - Tie mulch down with liquid asphalt at 0.1 gal./s.y. or emulsified asphalt at 0.04 gal./s.y.
 - Sodding:
 - Apply 10-10-10 fertilizer at 1000 lbs./acre. (25 lbs./1000 s.f.)
 - Apply ground agricultural limestone at 2000 lbs./acre. (50 lbs./1000 s.f.)
 - Incorporate both lime and fertilizer into soil by disking. Firm up after incorporation.
 - Lay sod to a tight fit. Roll to insure contact with underlying soil. Water as necessary for first two weeks (in summer) to insure establishment.
 - Ground Cover:
 - Crown vetch at 15 lbs./ acre.
- The contractor shall place plywood braced with sand bags at the inlet end of unfinished drain pipes at the end of each work day.
- All stockpiles shall be protected with straw bale dikes, silt fences, or other approved sediment control devices.

Rev Date	Rev No	Revision Description

COLUMBIA
M A R Y L A N D
5th ELECTION DISTRICT HOWARD COUNTY
OWNER AND DEVELOPER
HOWARD RESEARCH AND DEVELOPMENT CORP.
COLUMBIA, MARYLAND

PROJECT AREA VILLAGE of HICKORY RIDGE
SECTION I AREA G
PROJECT TITLE
HICKORY RIDGE ROAD

Des. By	E. L. B.	Scale As Shown	Dwg. No. 4 OF 5
Dwn. By	D. J. D.	Date June 30, 1978	CC.F. No.
Chk. By	E. L. B.	Approved	

APPROVED: Department of Public Works
W. P. Albert
Chief, Bureau of Engineering
Date 11-27-78

APPROVED: Office of Planning and Zoning
Joseph A. Necker Jr.
Chief, Division of Land Development
Date 11-15-78

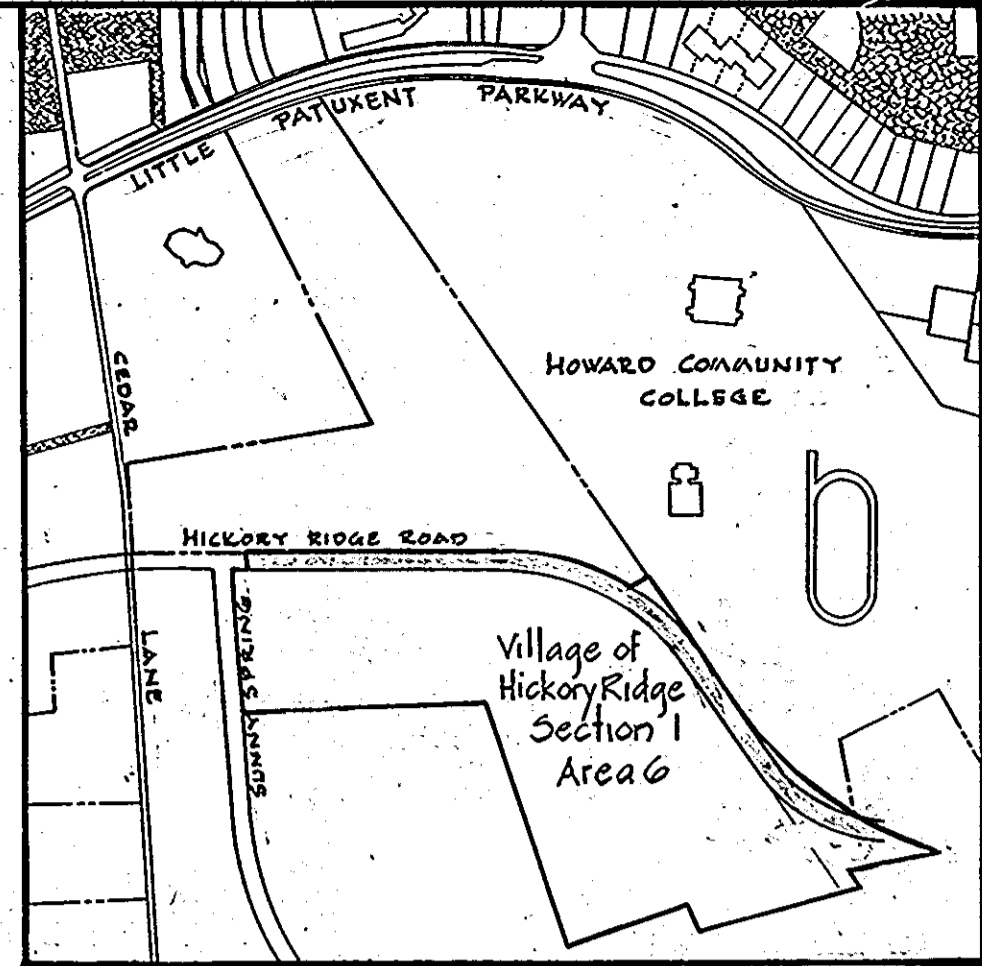
DEVELOPER'S CERTIFICATE
I certify that all development and/or construction will be done according to this plan of development and plan for Erosion and Sediment Control, and I also authorize periodic onsite inspection by the Howard Soil Conservation District or their authorized agents, as are deemed necessary. Deviation from this plan will not be made unless authorized by the Howard Soil Conservation District.
Joseph A. Necker Jr.
Date 9-12-78

PURDUM & JESCHKE
CONSULTING ENGINEERS
LAND SURVEYORS
1023 North Calvert Street
Baltimore, Maryland 21202 301/837-0194

Reviewed for Howard County Soil Conservation District and meets Technical Requirements
P. O'Keefe
U.S. Soil Conservation Service 11-15-78
Date
This development is approved for Soil Erosion and Sediment Control by the Howard Soil Conservation District
Robert J. Necker
District Coordinator 11-15-78
Date
Howard Soil Conservation District

ENGINEER'S CERTIFICATE
I certify that this plan for Erosion and Sediment Control represents a practical and workable plan based on my personal knowledge of the site conditions and that it was prepared in accordance with the requirements of the Howard Soil Conservation Service.
William J. Necker
Date 11/78
Howard Soil Conservation District

F-7948 AS-BUILT AUG 1983



VICINITY MAP
SCALE: 1" = 800'

LEGEND
 - - - - - Existing Contours
 = = = = = Existing Roadway
 = = = = = Proposed Roadway

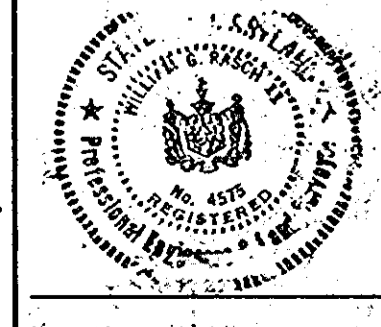
APPROVED: Department of Public Works
W. O. F. [Signature] 11-27-78
 Chief, Bureau of Engineering Date
 APPROVED: Office of Planning and Zoning
[Signature] 11-15-78
 Chief, Division of Land Development Date

DEVELOPER'S CERTIFICATE
 I certify that all development and/or construction will be done according to this plan of development and plan for Erosion and Sediment Control, and I also authorize periodic onsite inspection by the Howard Soil Conservation District or their authorized agents, as are deemed necessary. Deviation from this plan will not be made unless authorized by the Howard Soil Conservation District.
 7-6-78
 Joseph A. Necker Jr. Date

Reviewed for Howard County Soil Conservation District and meets Technical Requirements.
G. Wayne [Signature] 11-15-78
 U.S. Soil Conservation District Date
 This development plan is approved for Soil Erosion and Sediment Control by the Howard Soil Conservation District.
Robert W. [Signature] 11-15-78
 District Coordinator Date
 Howard Soil Conservation District

ENGINEER'S CERTIFICATE
 I certify that this plan for Erosion and Sediment Control represents a practical and workable plan based on my personal knowledge of the site conditions and that it was prepared in accordance with the requirements of the Howard Soil Conservation District.
William J. [Signature] 1/20/79
 Date

PURDUM & JESCHKE
 CONSULTING ENGINEERS
 & LAND SURVEYORS
 1023 NORTH CALVERT STREET
 BALTIMORE, MARYLAND 21202



Rev. Date	Rev. No.	Revision Description

COLUMBIA MARYLAND
 OWNER AND DEVELOPER
 HOWARD RESEARCH AND DEVELOPMENT CORP.
 COLUMBIA, MARYLAND 21044

PROJECT AREA: VILLAGE OF HICKORY RIDGE
 SECTION 1 AREA 6
 4th Election District - Howard County, Maryland

PROJECT TITLE
 DRAINAGE AREA MAP

Des. By: [Signature] Scale: 1" = 100' Dwg. No. 50F5
 Dwn. By: [Signature] Date: June 20, 1978 C.C.F. No.
 Chk. By: E.L.S. Approved

#42

F-79-48 AS-BUILT AUG 1983