

# COLUMBIA

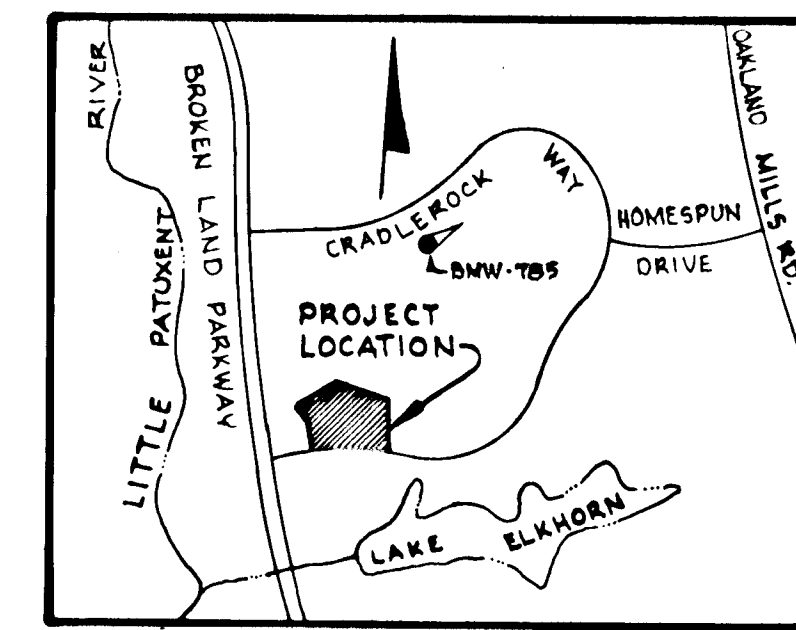
HOWARD COUNTY, MARYLAND  
6<sup>TH</sup> ELECTION DISTRICT

## ROAD CONSTRUCTION PLANS VILLAGE OF OWEN BROWN SECTION I AREA I RESUBDIVISION OF PARCEL "E-3"

### GENERAL NOTES

1. Bench Mark W-785 iron pipe 195' right of & station 17+00 Cradlerock Way. Elev. 351.79
2. All work shall be done in accordance with the Howard County Road Construction Code and Standard Specifications.
3. All utility companies must be notified 24 hours in advance of any construction.
4. Secondary residential streets are designed for 30 mph. traffic speed in accordance with AAASHO Standards.
5. All inlets shall be Howard County Standard unless otherwise shown. All "A" inlets shall be depressed.
6. Storm drain trenches within road rights-of-way shall be backfilled and compacted in accordance with Howard County Road Code.
7. Speed limit for loop portions of streets shall be 15 mph.

SHEET INDEX	
NO.	DESCRIPTION
1	TITLE SHEET
2	PLAN AND PROFILE-HICKORY LOG CIRCLE
3	STORM DRAIN PROFILES AND SPECIAL DETAILS
4	STANDARD DETAILS
5	DRAINAGE AREA MAP
6	DRAINAGE AREA MAP



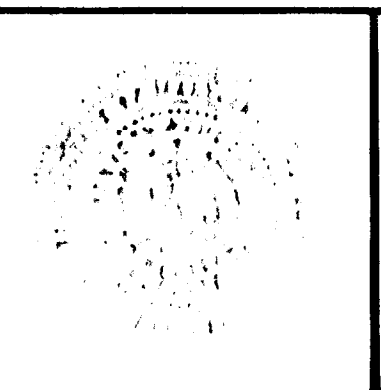
VICINITY MAP  
Scale: 1"=2000'

APPROVED  
DIVISION OF LAND DEVELOPMENT  
AND TRANSPORTATION PLANNING  
HOWARD COUNTY, MARYLAND  
DATE OCT. 10, 1975  
*[Signature]*

DEPARTMENT OF PUBLIC WORKS  
*[Signature]* 10/28/75  
CHIEF, BUREAU OF HIGHWAYS DATE  
OFFICE OF PLANNING AND ZONING  
*[Signature]* 10/27/75  
CHIEF, DIVISION OF LAND DEVELOPMENT  
AND TRANSPORTATION PLANNING DATE

OWNER  
OWEN BROWN "E" DEV. CORP  
10275 LITTLE PATUXENT PARKWAY  
COLUMBIA, MARYLAND 21044

DEVELOPER  
HOWARD HOMES COMMUNITIES, INC.  
P.O. Box 802  
COLUMBIA, MARYLAND



WHITMAN, REQUARDT / ASSOCIATES  
ENGINEERS  
BALTIMORE, MARYLAND  
*[Signature]*  
KENNETH A. MCCORD  
Registered Engineer  
No. 1974

Note: No Sewer MH's in Road R/W.

For Horizontal & Vertical References See Reub. of Parcel "E-2" Plan.

Note: Construct I-10 with four throat openings. See Stakeout I-10. Throat Openings Elev 307.5

Note: For existing storm drainage in Cradlerock Way, see Road Construction Dwg. for the Village of Owen Brown, Section I Area dated May 30, 1972.

**Curve Data**  
 P.C. 7+34.18 TO P.T. 7+57.74  
 Δ = 90°00'00"  
 R = 15.00'  
 A = 23.56'  
 T = 15.00'  
 Ch = 21.21'  
 Brg = S75°40'00"E

P.C. 9+02.74 TO P.T. 9+26.50  
 Δ = 90°00'00"  
 R = 15.00'  
 A = 23.56'  
 T = 15.00'  
 Ch = 21.21'  
 Brg = S75°40'00"E

P.C. 9+67.30 TO P.T. 9+90.86  
 Δ = 90°00'00"  
 R = 15.00'  
 A = 23.56'  
 T = 15.00'  
 Ch = 21.21'  
 Brg = N75°40'00"W

DEPARTMENT OF PUBLIC WORKS  
 H. H. Heppner 10/28/75  
 CHIEF, BUREAU OF HIGHWAYS DATE  
 OFFICE OF PLANNING AND ZONING  
 W. H. Clawson 10/27/75  
 CHIEF, DIVISION OF LAND DEVELOPMENT AND TRANSPORTATION PLANNING DATE

Δ Paper As-BUILT PLAN Signed and Submitted By Kenneth A. McCord P.E.#1974.

Rev. Date	Rev. No.	Revision Description
7-18-72	1	As Built

**COLUMBIA**  
 6th ELECTION DISTRICT  
 HOWARD COUNTY, MARYLAND

DEVELOPER  
 HOWARD HOMES COMMUNITIES, INC.

PROJECT AREA  
**VILLAGE OF OWEN BROWN**

SECTION I, AREA I - RESUBDIVISION OF PARCEL "E-5"  
 PROJECT TITLE  
**HICKORY LOG CIRCLE**  
 PLAN AND PROFILE

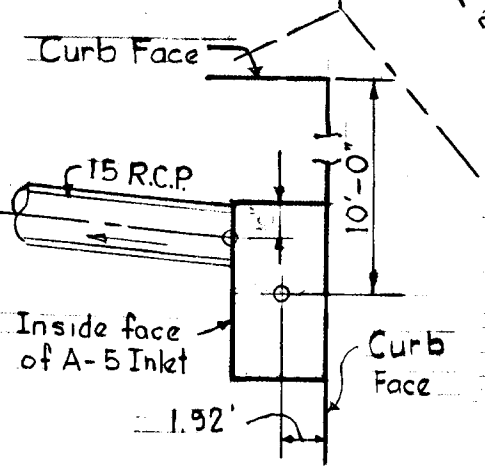
SCALE: As Shown DATE: OCT. 14, 1975

WHITMAN, REQUARDT & ASSOCIATES  
 ENGINEERS  
 BALTIMORE, MARYLAND 21202

*Kenneth A. McCord*  
 KENNETH A. MCCORD  
 Registered Engineer  
 No. 1974

STAKEOUT I-9

THE HOWARD RESEARCH AND DEVELOPMENT CORPORATION  
 463/196

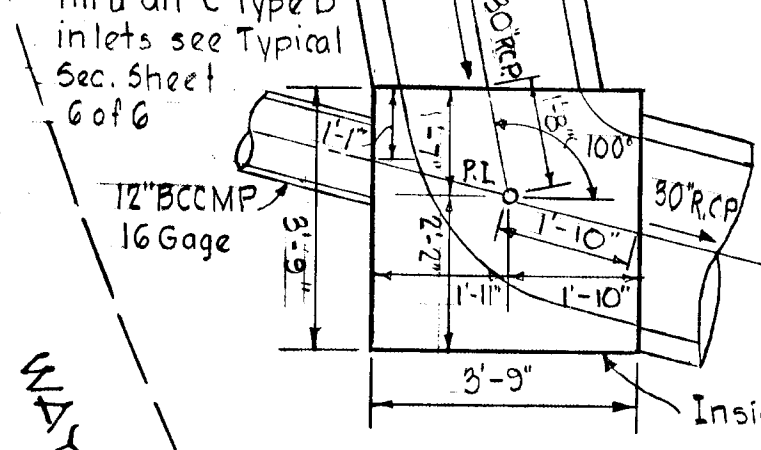


STAKEOUT I-8



PLAN  
 Scale: 1" = 50'

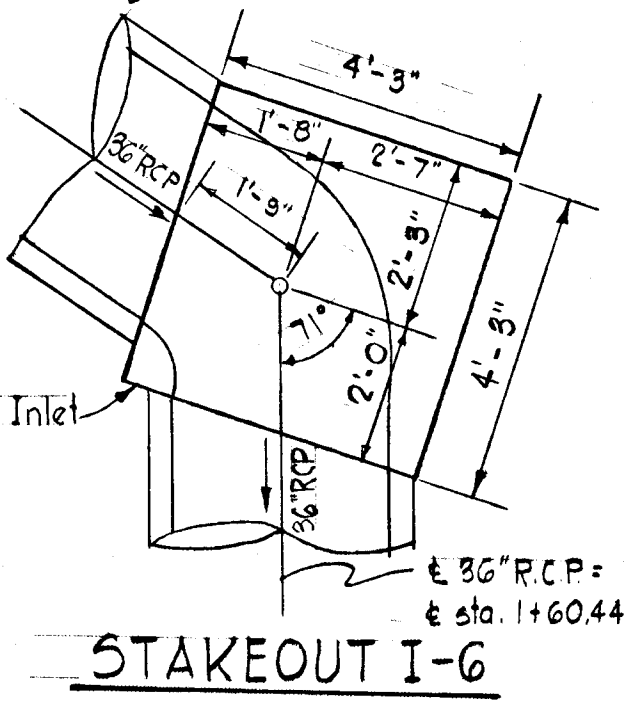
STAKEOUT I-10



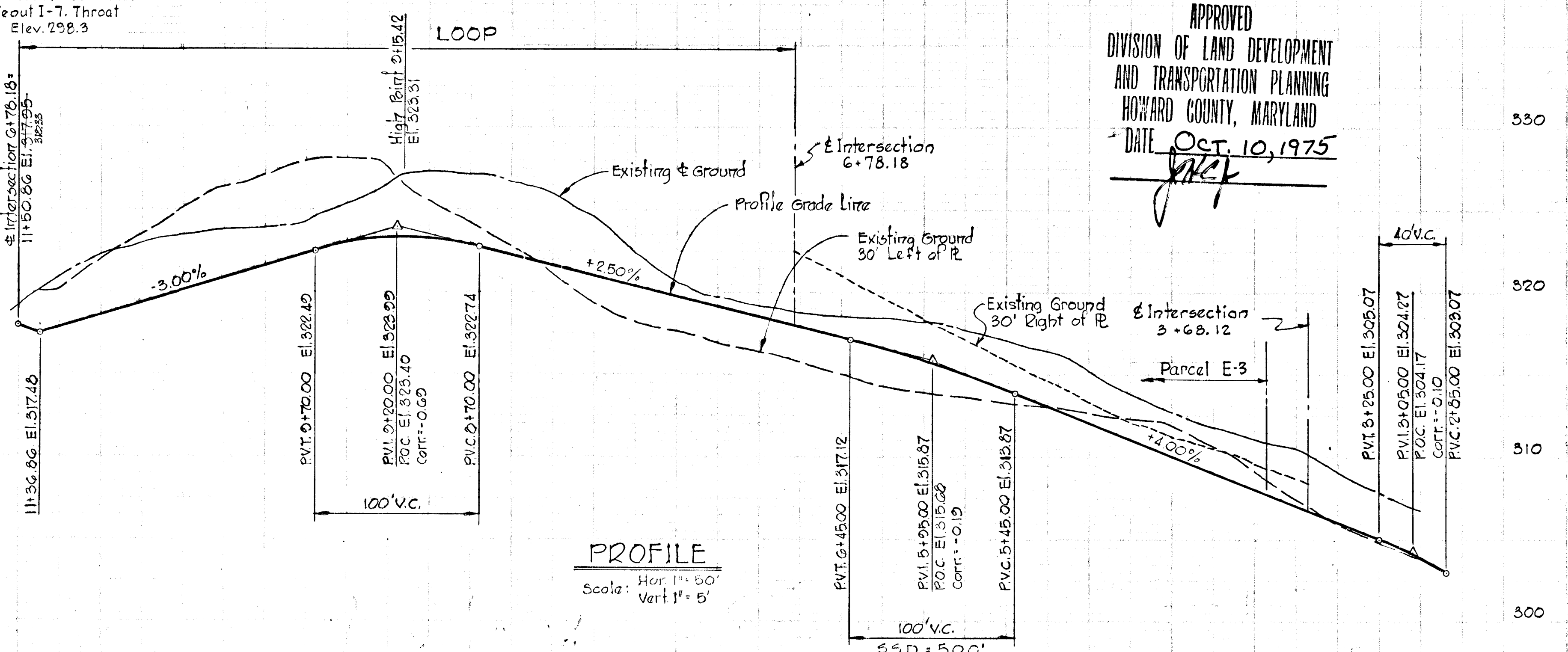
STAKEOUT I-7

Note: Construct I-7 with two throat openings North & South Faces. See Stakeout I-7. Throat Openings Elev. 298.9

OWEN BROWN "E" DEV. CORP.  
 OWNER  
 10275 LITTLE PATUXENT PARKWAY  
 COLUMBIA, MARYLAND



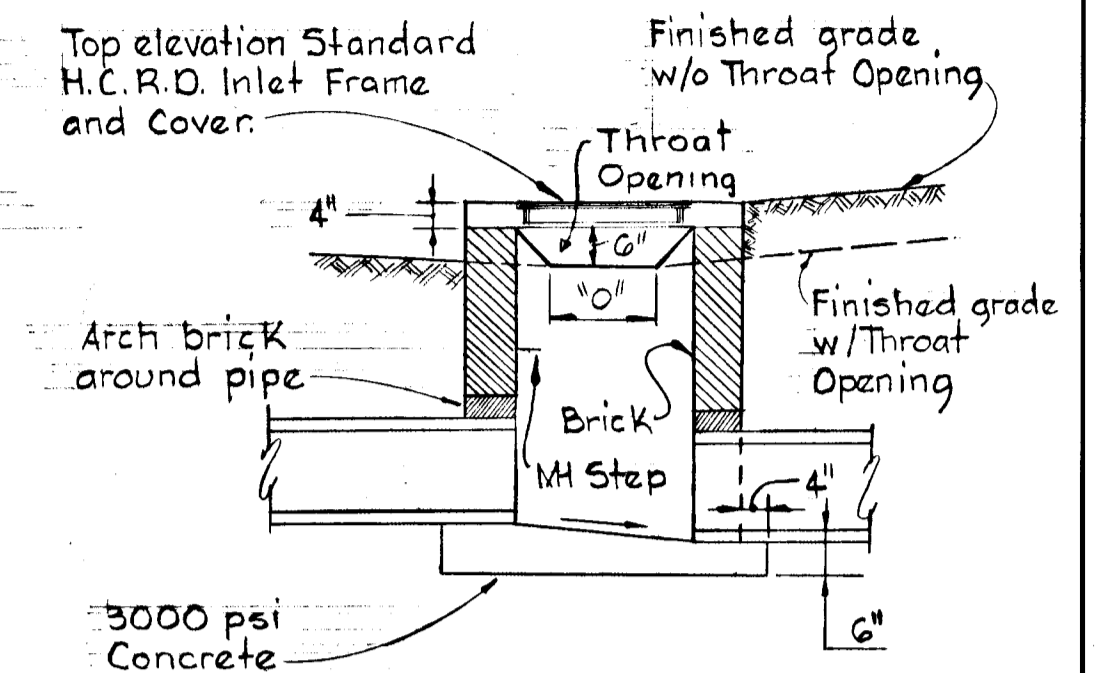
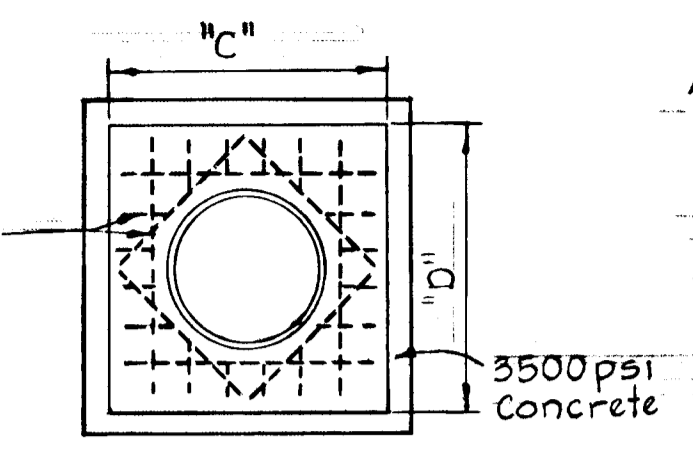
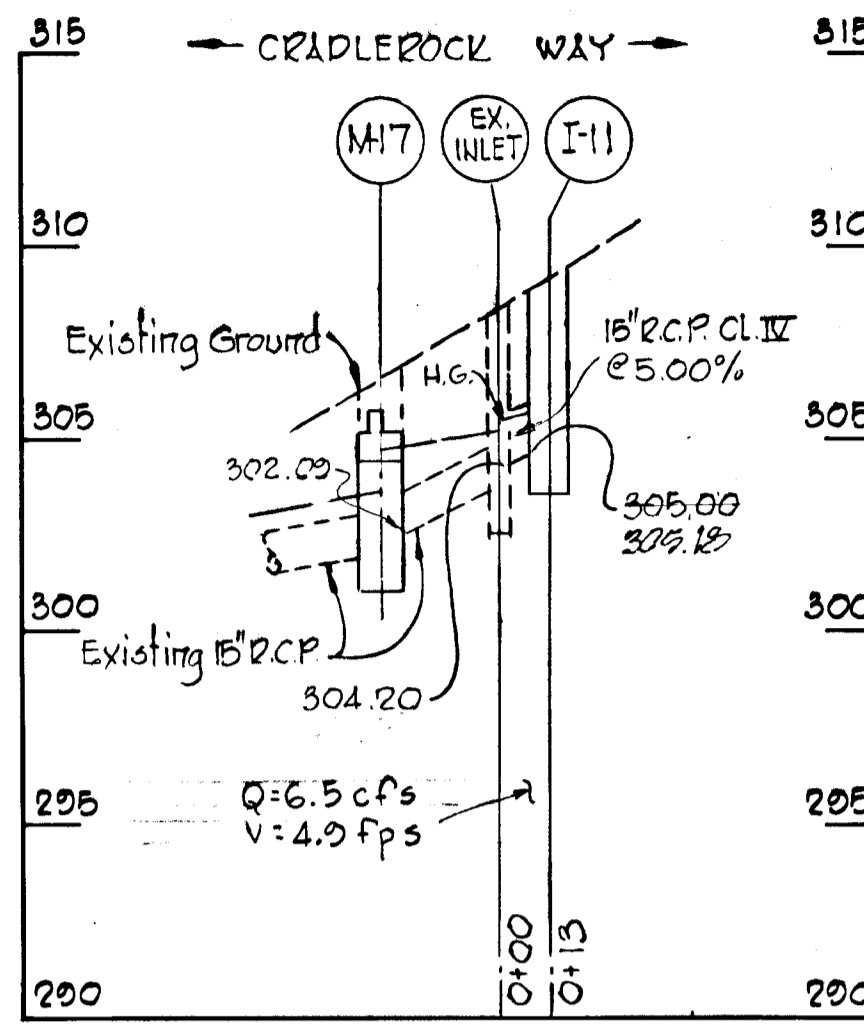
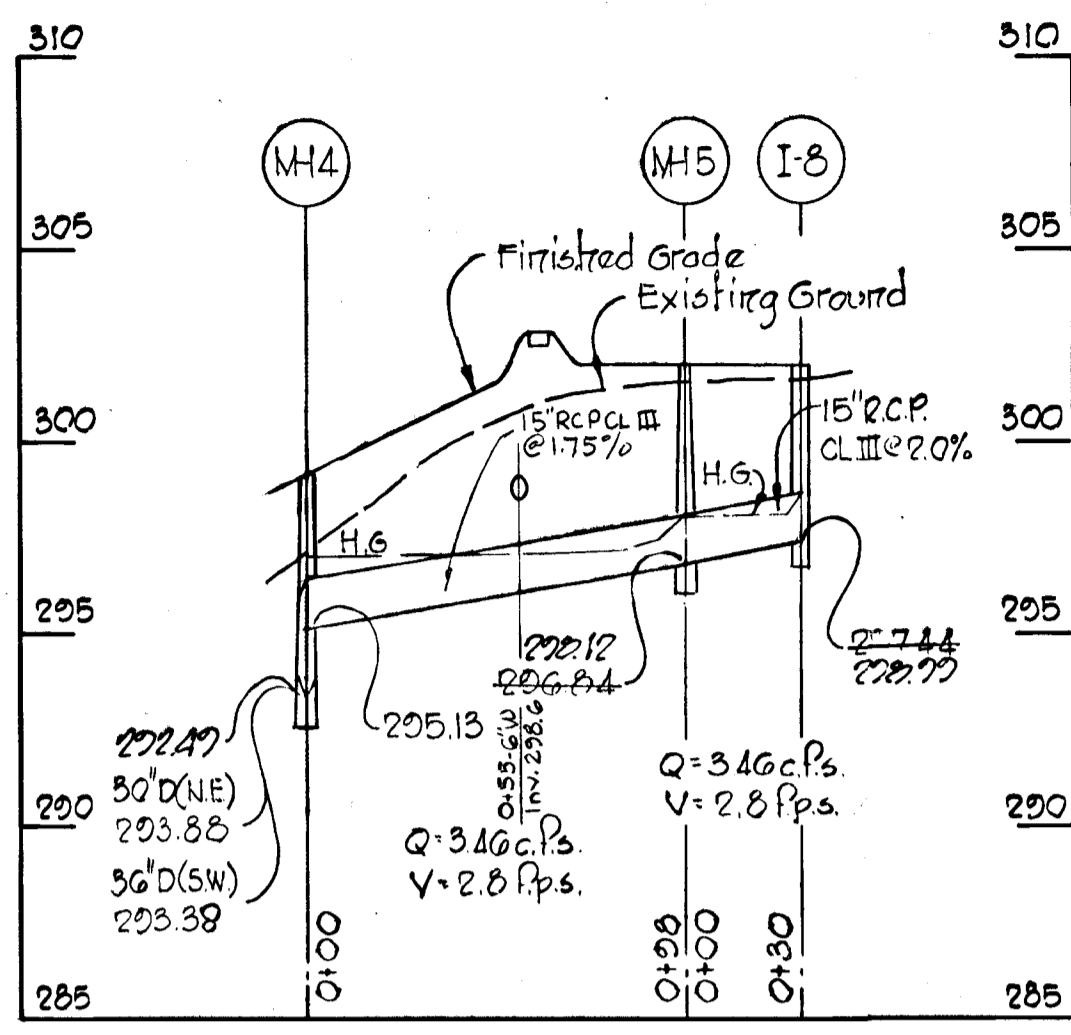
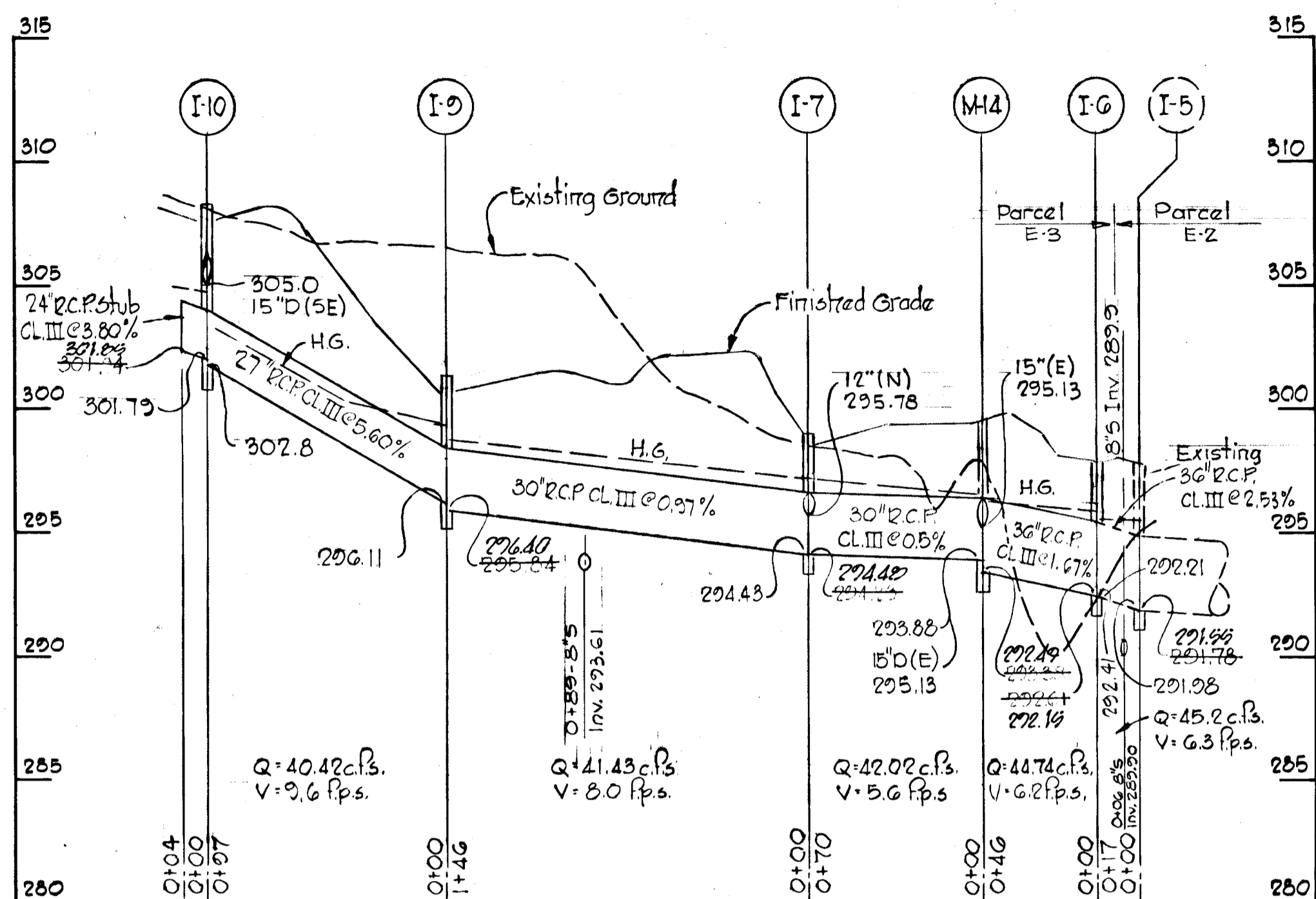
STAKEOUT I-6



APPROVED  
 DIVISION OF LAND DEVELOPMENT AND TRANSPORTATION PLANNING  
 HOWARD COUNTY, MARYLAND  
 DATE: OCT. 10, 1975  
*[Signature]*

NO.	TYPE	TYPE	INVERT	LOCATION
I-3	Standard A-10 Inlet Width: 25"	306.61	304.29	4' of Inlet 5.75 Right of Sta 4+13.5
I-3a	Standard A-5 Inlet Width: 25"	305.35	304.24	4' of Inlet 15.75 Right of Sta 4+27
I-6	"C" Type D Inlet See Street GofG	297.83	292.16	4' of Inlet 33' Right of Sta 1+60
I-7	"C" Type D Inlet See Street GofG	292.13	294.48	See Plan and Stakeout Plan this Sheet
I-8	Standard A-5 Inlet Width: 25"	302.60	283.77	See Plan and Stakeout Plan this Sheet
I-9	"C" Type D Inlet See Street GofG	301.33	296.40	See Plan and Stakeout Plan this Sheet
I-10	"C" Type D Inlet See Street GofG	308.53	301.25	See Plan and Stakeout Plan this Sheet
MH4	Type B Manhole See Street GofG	293.50	292.27	See Plan
MH5	Standard Manhole	302.00	292.12	See Plan
MH7	Special Manhole See Street GofG	305.90	-	See Plan
I-11	Standard A-10 Inlet Width: 25"	303.10	305.14	4' of Inlet 23.25 Right of Sta 9+75
I-20	Yard Type Inlet	304.50	300.24	See Plan





PLAN-CONCRETE SLAB

PLAN-SLAB REMOVED

SECTION

Note:  
 Inlet I-9 dimensions are 3'-2" x 2'-6". All other inlets are square. See Stakeout I-9.

INLET	"A"	"B"	"C"	"D"	"O"
I-6	4'-3"	5'-7"	5'-7"	5'-7"	5'-3"
I-7	3'-9"	5'-1"	5'-1"	5'-1"	2'-9"
I-9	3'-2"	4'-6"	4'-6"	3'-10"	2'-2"
I-10	8'-0"	4'-4"	4'-4"	4'-4"	2'-0"

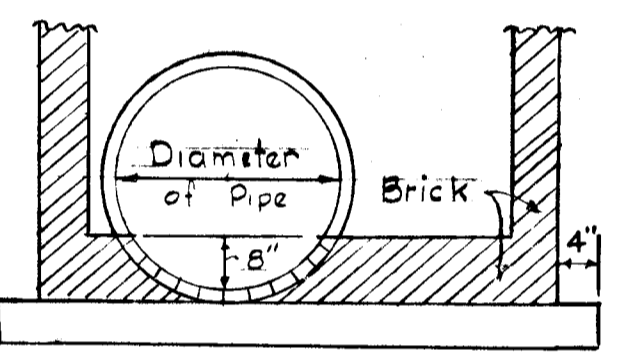
PROFILES

Scale: Hor: 1" = 50'  
 Vert: 1" = 5'

C TYPE "D" INLET

No Scale

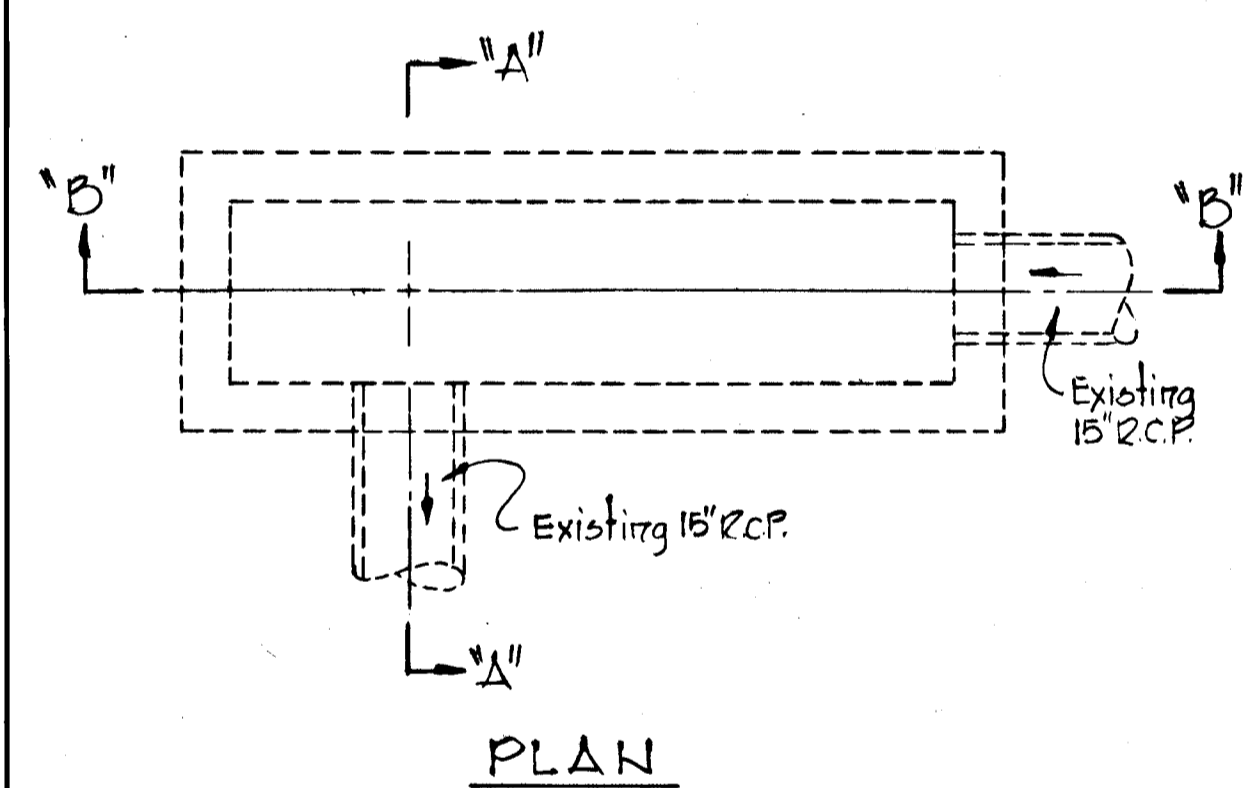
Note:  
 For all C Type D Inlets, Brick channel shall be 8" in depth.



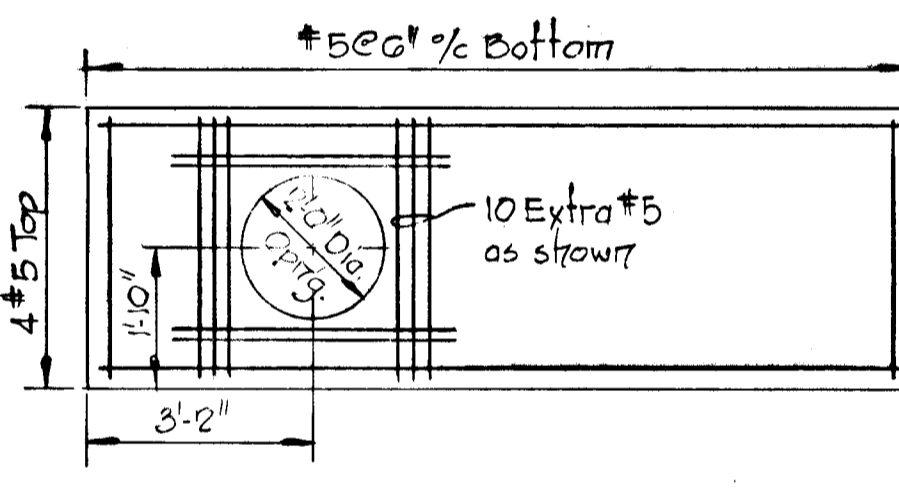
TYPICAL SECTION THRU C TYPE D INLET

No Scale

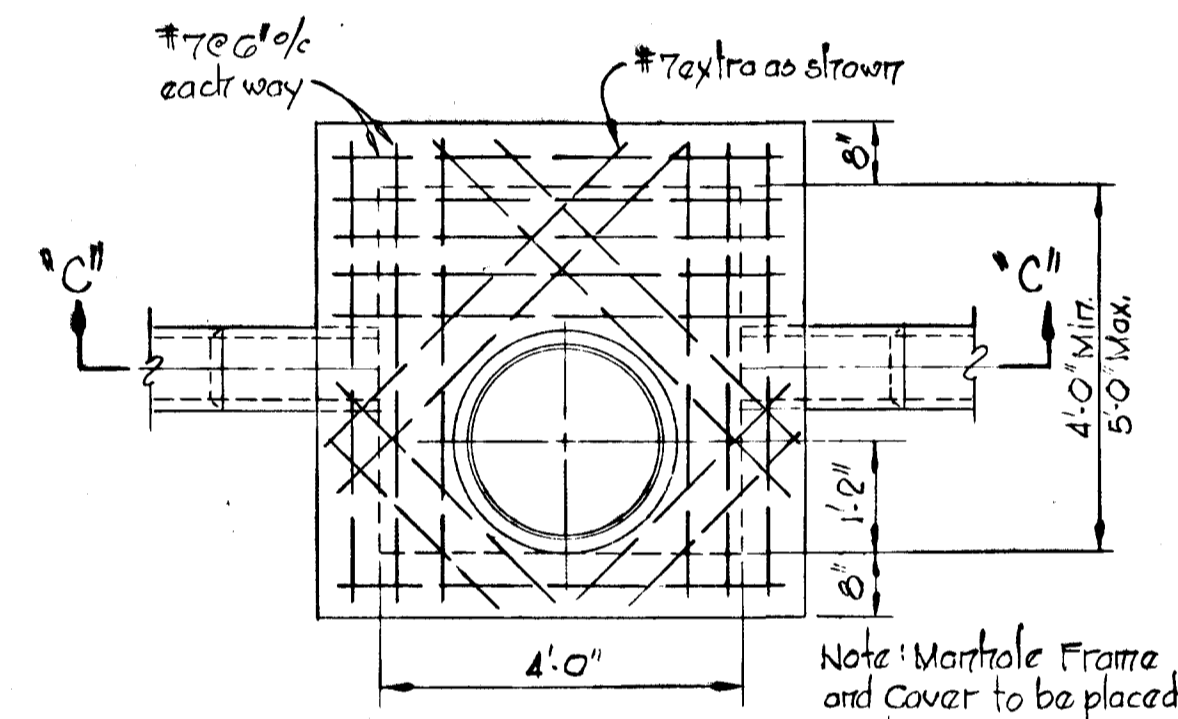
APPROVED  
 DIVISION OF LAND DEVELOPMENT AND TRANSPORTATION PLANNING  
 HOWARD COUNTY, MARYLAND  
 DATE OCT. 10, 1975  
 S. H. McLeod



PLAN



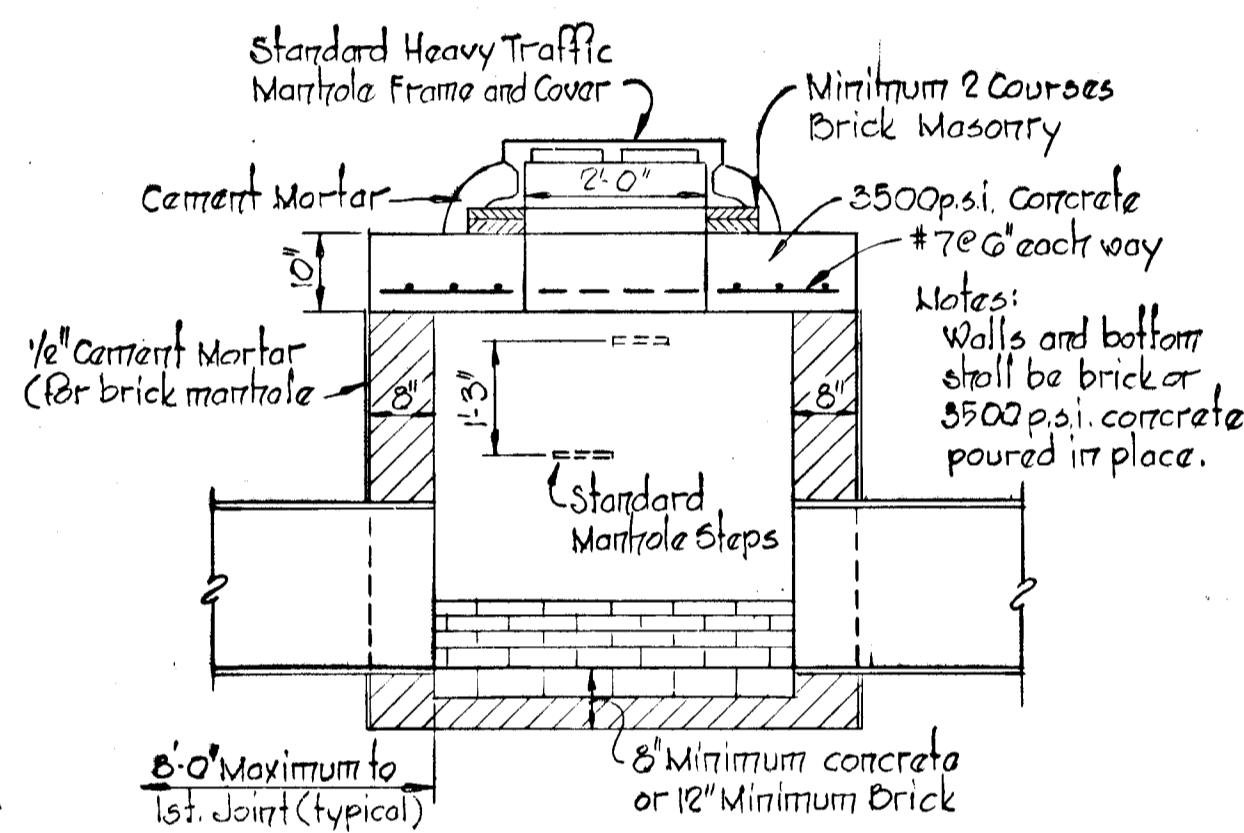
PLAN-CONCRETE SLAB



PLAN

TYPE "B" MANHOLE

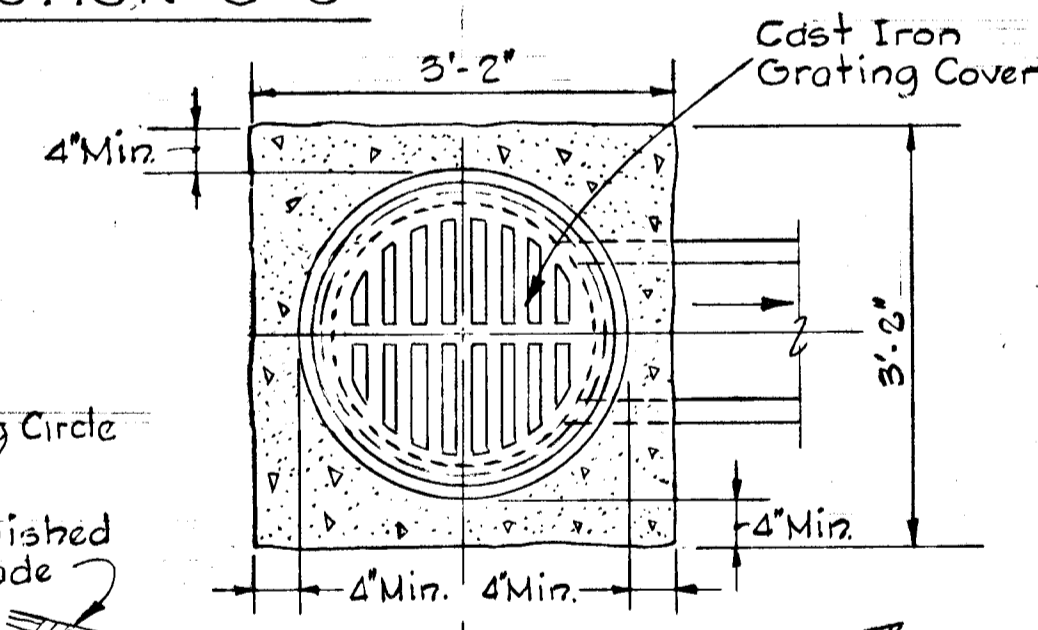
No Scale



SECTION "C-C"

YARD TYPE INLET I-20

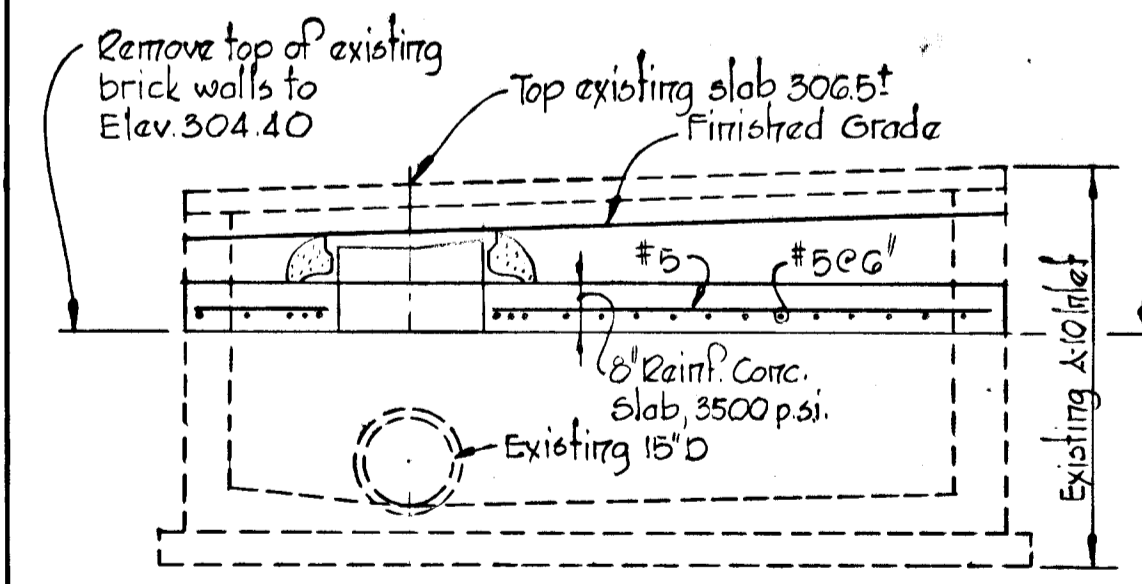
No Scale



SECTION "A-A"

OWEN BROWN "E" DEV. CORP.

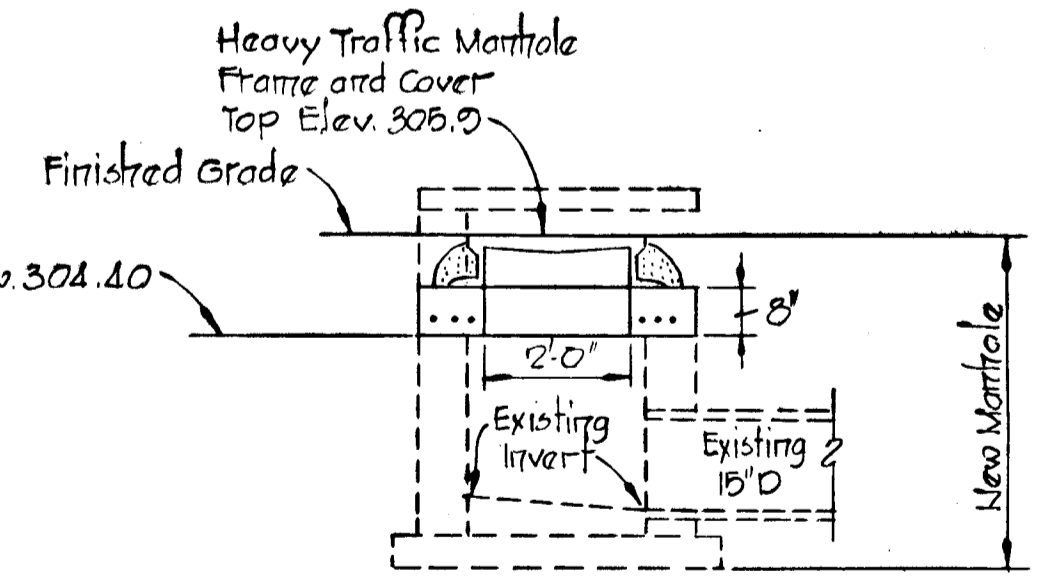
OWNER  
 10275 LITTLE PATUXENT PARKWAY  
 COLUMBIA, MARYLAND



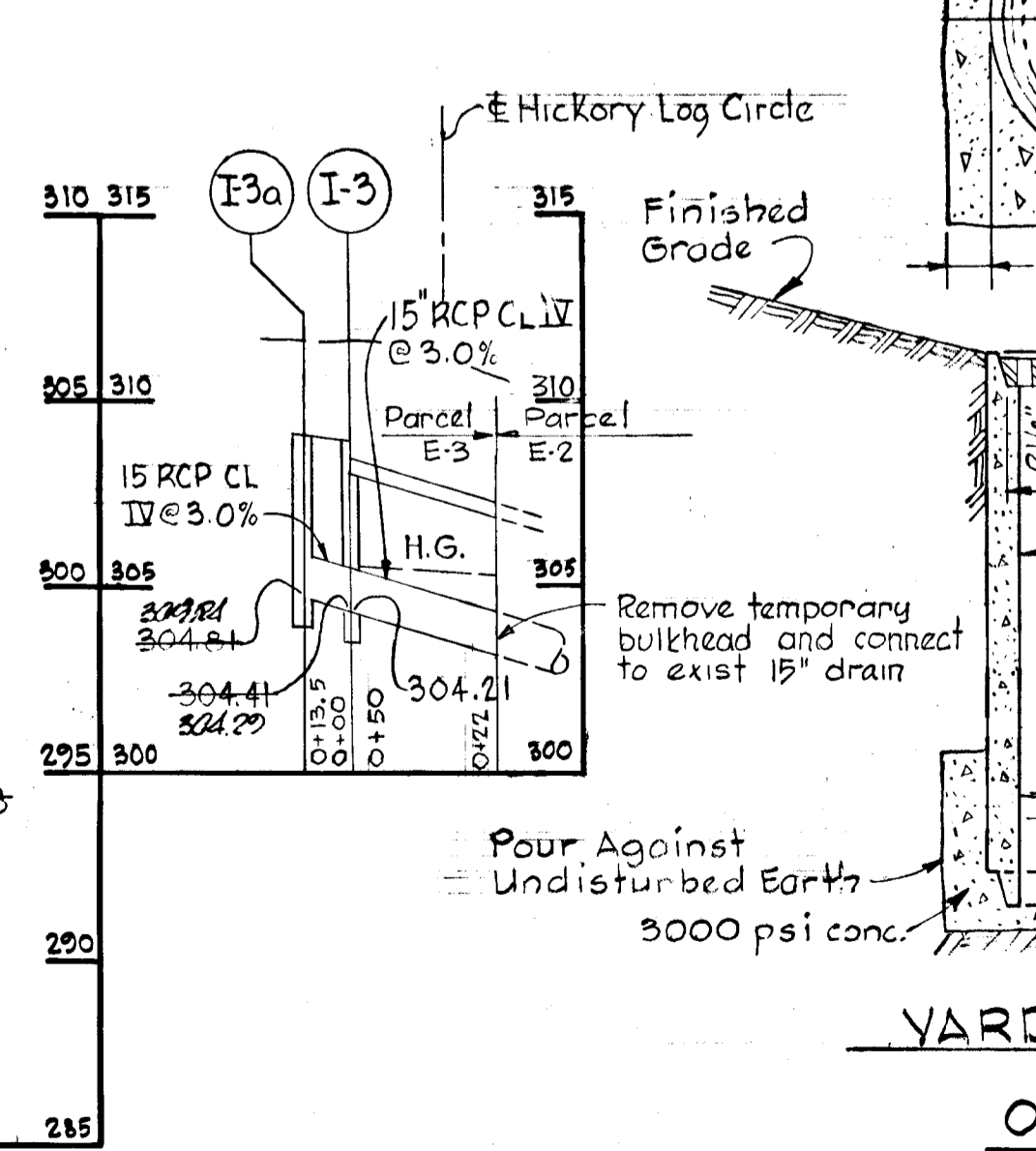
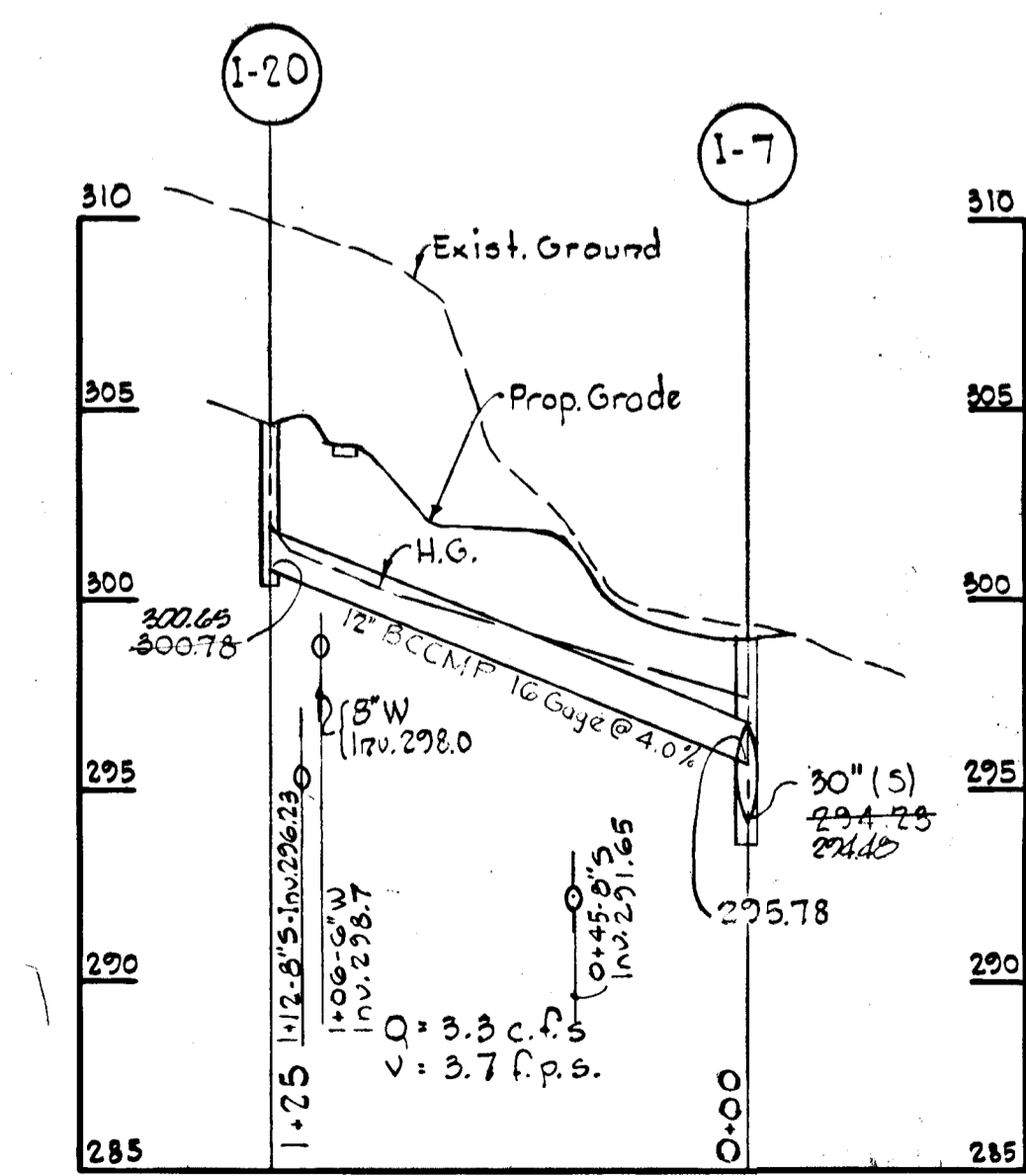
SECTION "B-B"

DETAIL - MANHOLE MH7

Scale: 3/8" = 1'-0"



SECTION "A-A"



Rev. Date	Rev. No.	Revision Description

**COLUMBIA**  
 ELECTION DISTRICT  
 HOWARD COUNTY, MARYLAND

DEVELOPER  
 HOWARD HOMES COMMUNITIES, INC.

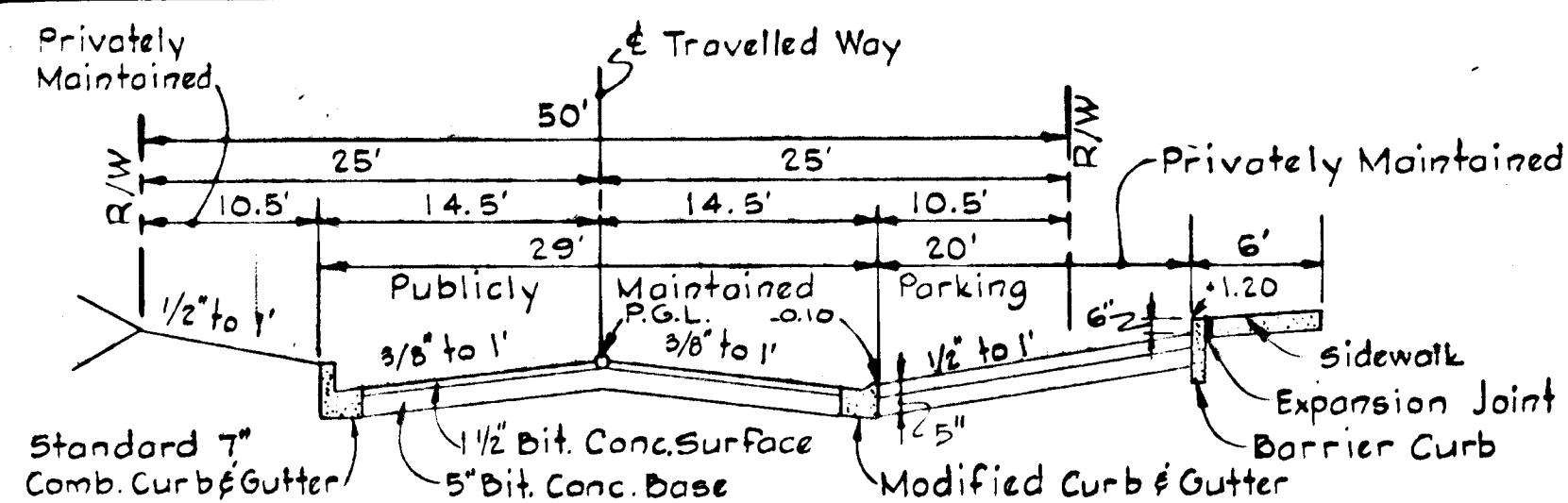
PROJECT AREA  
**VILLAGE OF OWEN BROWN**  
 SECTION 1 AREA 1  
 Resubdivision of Parcel "E-3"

PROJECT TITLE  
**STORM DRAIN PROFILES AND SPECIAL DETAILS**

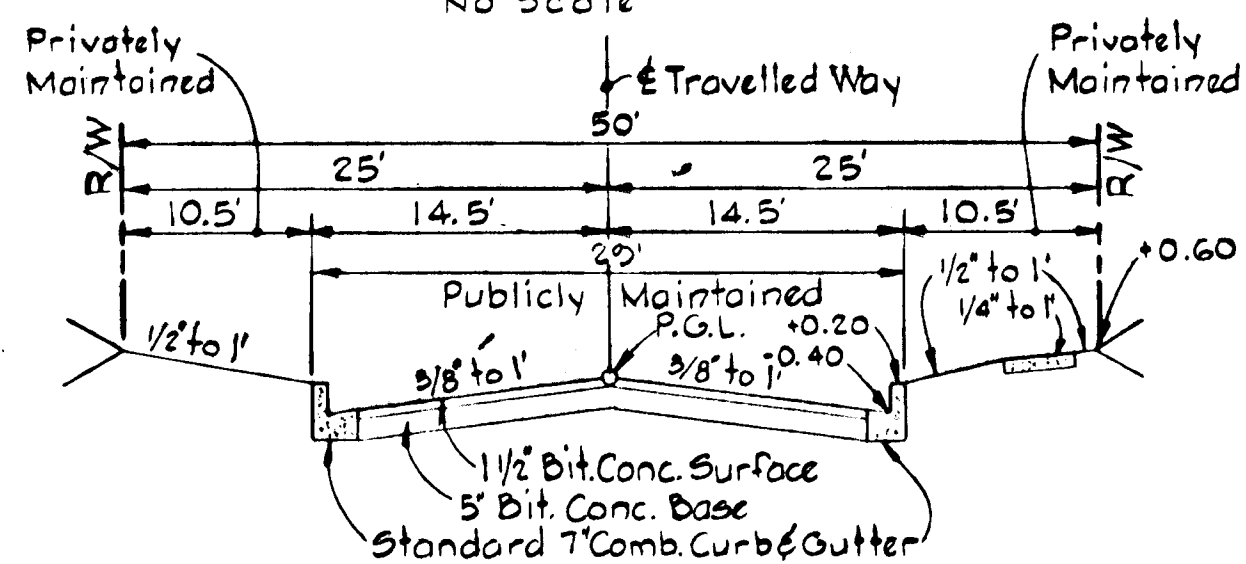
SCALE: AS SHOWN DATE: OCT. 14, 1975

WHITMAN, REQUARDT & ASSOCIATES  
 ENGINEERS  
 BALTIMORE, MARYLAND 21202

*Kenneth A. McLeod*  
 KENNETH A. McLEOD  
 Registered Engineer  
 No. 1974



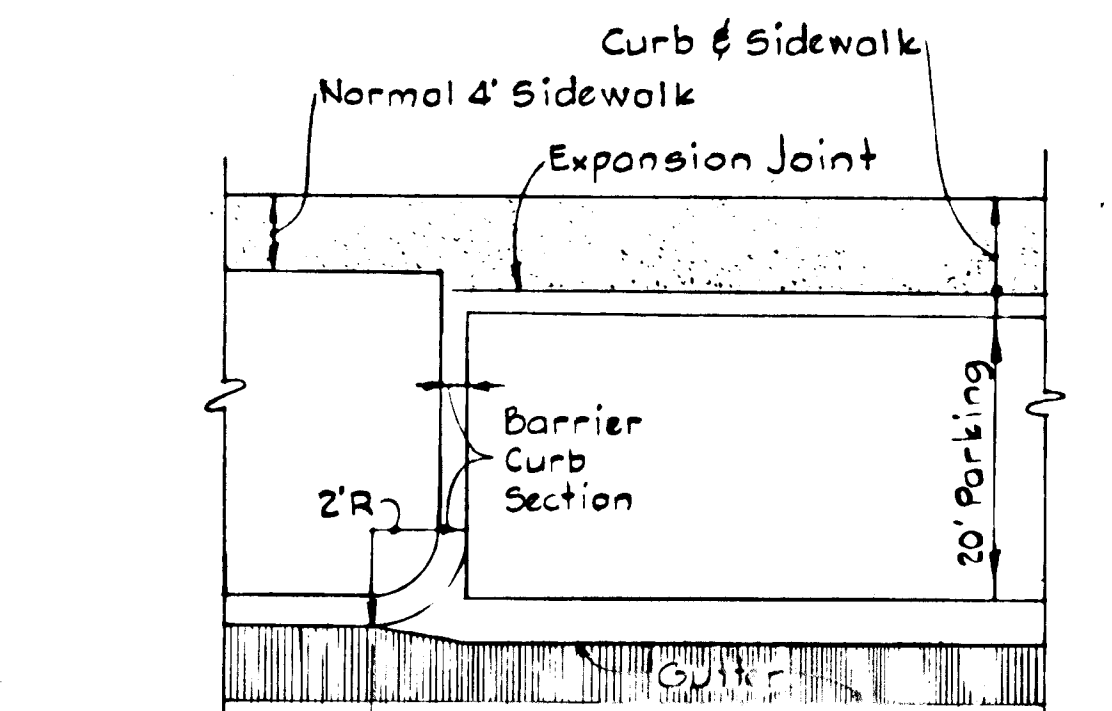
**TYPICAL SECTION  
PARKING ADJACENT TO 29' PAVING**  
No Scale



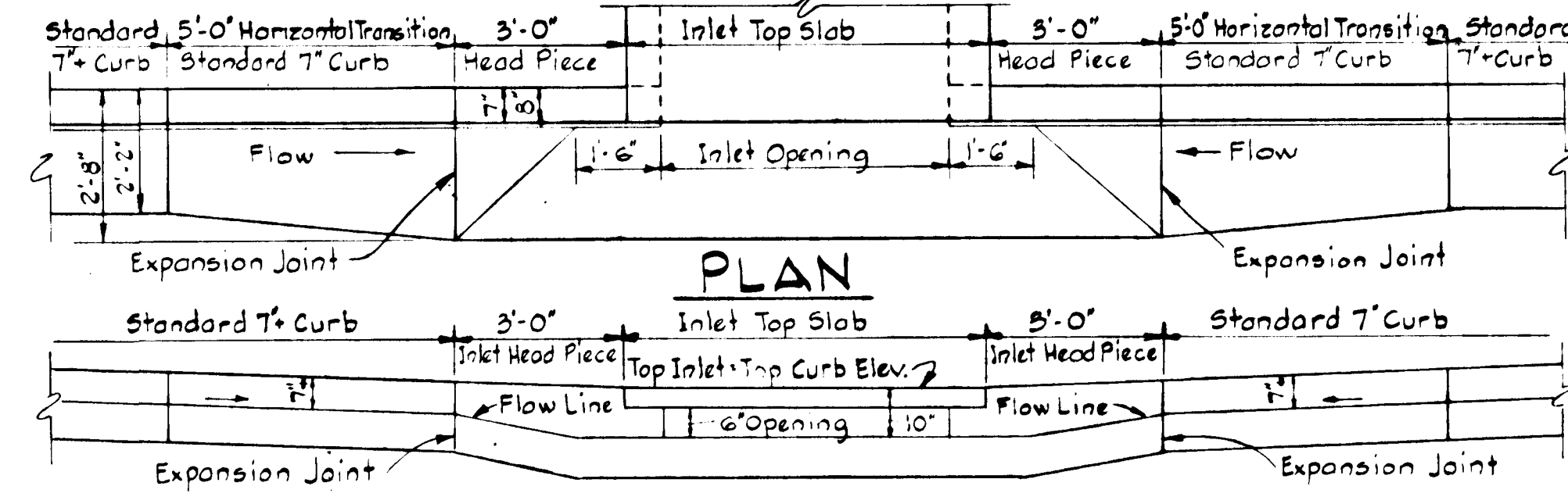
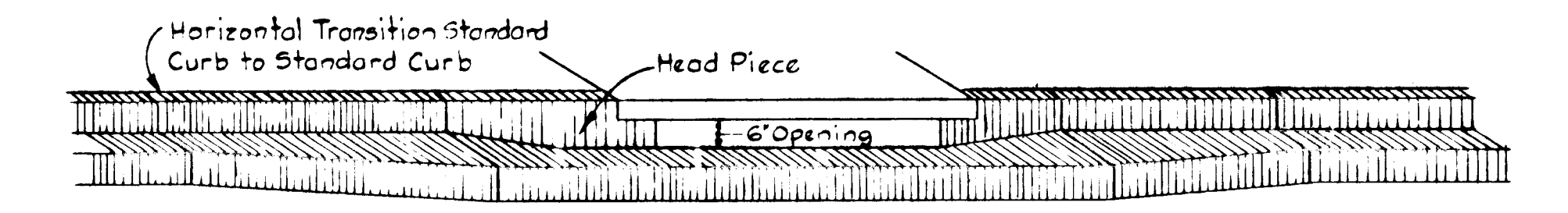
**TYPICAL SECTION  
50' R/W - 29' PAVING**  
No Scale

**NOTES:**

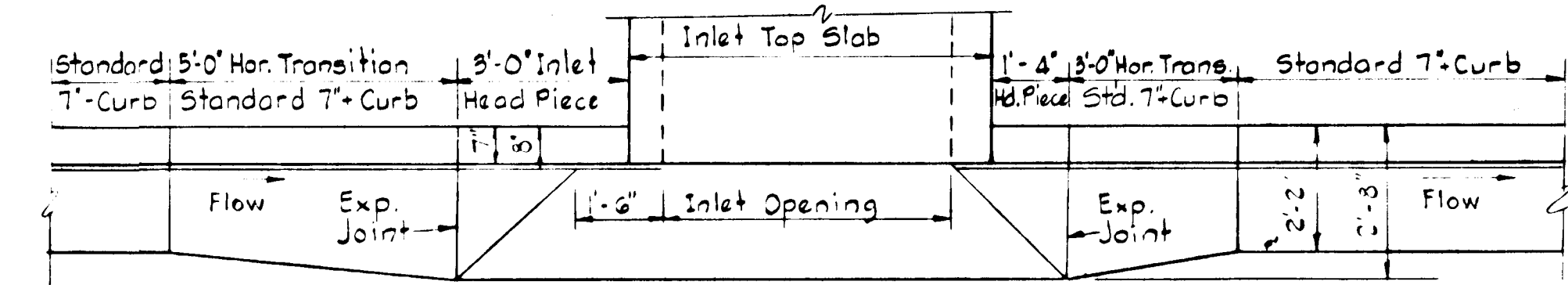
1. Standard 7" Comb. and Modified Curb and Gutter shall be in accordance with County Standard D-40, Page 55.
2. Paving (6 1/2") shall be in accordance with County Standard D-11, Page 66.
3. Transition from Standard 7" Comb. Curb and Gutter to Modified Curb and Gutter shall be in accordance with detail shown on this sheet.
4. Tack Coat is required in accordance with Section C-31-4 of the Howard County Road Construction Code and Standard Spec.
5. Base will be primed in accordance with C-30-3 as provided in the Howard County Road Construction Code and Standard Spec.
6. Paving (5") shall be in accordance with County Standard D-13, Page 68.
7. Sidewalks shall be in accordance with County Standard D-14 Page 69.



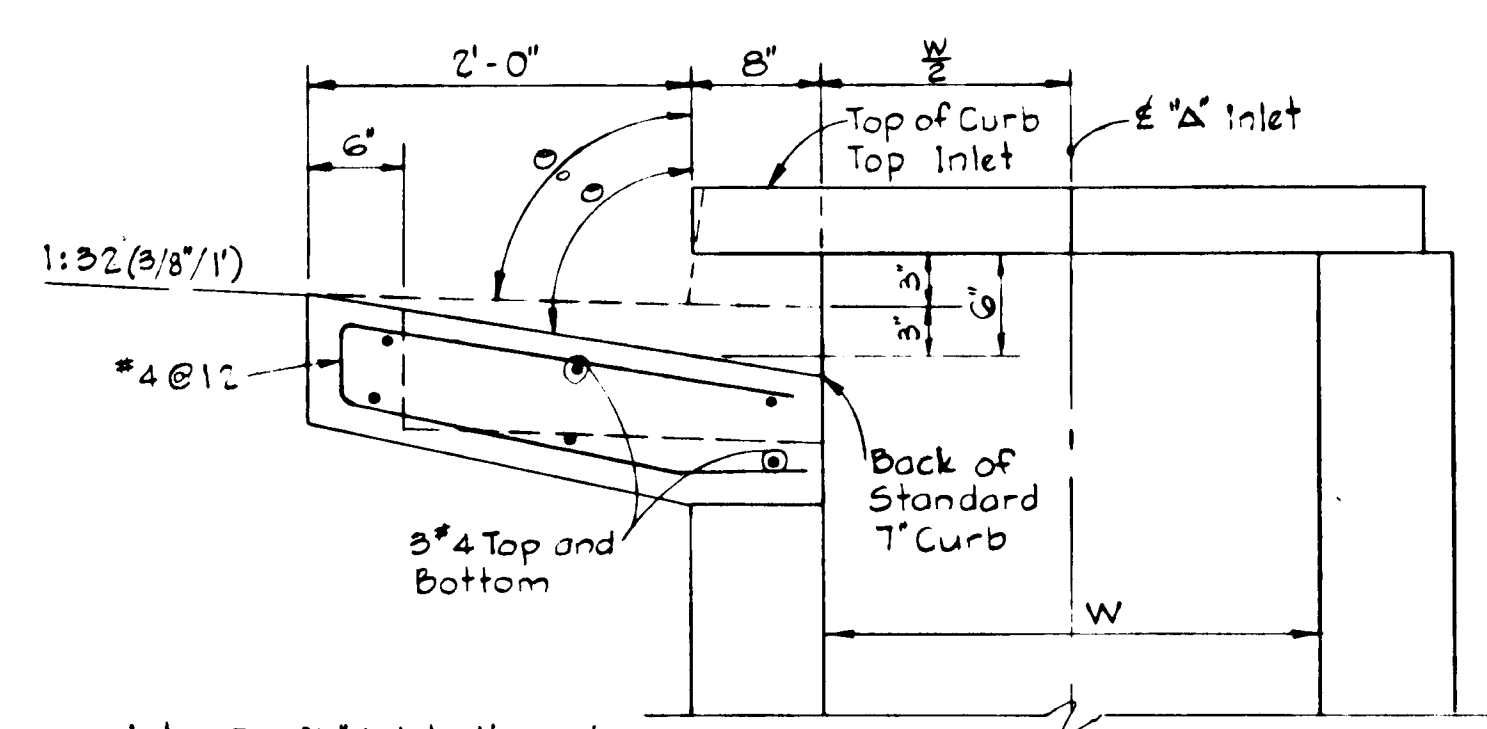
**CURB & GUTTER TRANSITION DETAIL**  
No Scale



**SECTION ALONG FLOW LINE  
SUMPED 'A' INLETS - STANDARD CURB**



**SECTION ALONG FLOW LINE  
'A' INLETS - STANDARD CURB**



**SECTION - 'A' INLET STANDARD CURB**

DEPARTMENT OF PUBLIC WORKS  
*D. H. Heiland* 10/24/75  
 CHIEF, BUREAU OF HIGHWAYS DATE  
 OFFICE OF PLANNING AND ZONING  
*W. E. Lawson* 10/27/75  
 CHIEF, DIVISION OF LAND DEVELOPMENT AND TRANSPORTATION PLANNING DATE

APPROVED  
 DIVISION OF LAND DEVELOPMENT  
 AND TRANSPORTATION PLANNING  
 HOWARD COUNTY, MARYLAND  
 DATE OCT. 10, 1975  
*J. H. H.*

Rev. Date	Rev. No.	Revision Description
<b>COLUMBIA</b> 6 <sup>TH</sup> ELECTION DISTRICT HOWARD COUNTY, MARYLAND DEVELOPER HOWARD HOMES COMMUNITIES, INC.		
PROJECT AREA VILLAGE OF OWEN BROWN SECTION 1, AREA 1 Resubdivision of Parcels "E-3"		
<b>STANDARD DETAILS</b>		
Scale: As Shown		Date: OCT. 14, 1975
WHITMAN, REQUARDT & ASSOCIATES ENGINEERS BALTIMORE, MARYLAND 21202		
<i>Kenneth A. McCord</i> OWNER 10275 LITTLE PATUXENT PARKWAY COLUMBIA, MARYLAND		<i>Kenneth A. McCord</i> KENNETH A. MCCORD Registered Engineer No. 1974

OWEN BROWN "E" DEV. CORP.  
 OWNER  
 10275 LITTLE PATUXENT PARKWAY  
 COLUMBIA, MARYLAND



SEE SHEET 2 OF 2



OPEN SPACE LOT 278

LEGEND

- 400--- Existing Contours (2' Interval)
- 400--- Proposed Contours (1' Interval)
- ⊙ Building Group Number
- ⊙ Number of Buildings in Building Group
- ⊙ Lot Number
- E-16 Proposed First Floor Elevation
- FF 489.00 Proposed Spot Elevation
- 3/2' 0" Existing Tree Line
- TC Top of Curb
- 29' Traveled Way (To be Publicly Maintained)
- Concrete Walk
- Mosaic Wall
- Brick (Dry Stack)
- ⊙, ⊙, ⊙ Building Types (See Cover Sheet)
- Trees To Remain
- Pumpout To Remain, Wall Street Address #7391

PARCEL "F-1"

NOTE:  
 For Drainage Areas,  
 Existing storm drain  
 in Cradlerock Way,  
 See Exhibit No. 3.

Rev. Date	Rev. No.	Revision Description
<b>COLUMBIA</b>		
6 <sup>TH</sup> ELECTION DISTRICT HOWARD COUNTY, MARYLAND		
OWNER and DEVELOPER HOWARD HOMES COMMUNITIES, INC		
Project Area		
VILLAGE OF OWEN BROWN SECTION 1 AREA 1 Resubdivision of Parcel E-3		
Project Title		
<b>DRAINAGE AREA MAP</b>		
Scale: 1" = 50'		Date: OCT. 14, 1975
WHITMAN, REQUARDT & ASSOCIATES ENGINEERS BALTIMORE, MARYLAND		
<i>Kenneth A. McCord</i> KENNETH A. McCORD Registered Engineer No. 1974		

OPEN SPACE LOT 283  
 PLAT BOOK 27 Foli. 51

LIMIT OF  
 SUBMISSION

LAND DESIGN/RESEARCH  
 PLANNER  
 ANNE ARUNDEL COUNTY  
 20 NEW MARKET ROAD

DEPARTMENT OF LAND DEVELOPMENT  
 AND TRANSPORTATION PLANNING  
 HOWARD COUNTY, MARYLAND  
 DATE OCT. 10, 1975  
*J. J. Cleaver*



