

COLUMBIA

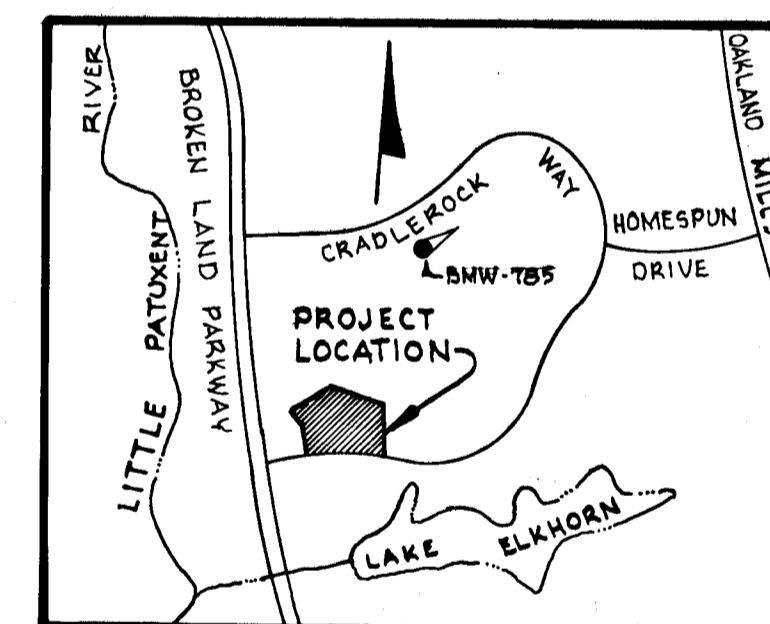
HOWARD COUNTY, MARYLAND
6TH ELECTION DISTRICT

ROAD CONSTRUCTION PLANS VILLAGE OF OWEN BROWN SECTION I AREA I RESUBDIVISION OF PARCEL "E-2"

GENERAL NOTES

1. Bench Mark W-785 iron pipe 195' right of & station 17+00 Cradlerock Way. Elev. 351.79
2. All work shall be done in accordance with the Howard County Road Construction Code and Standard Specifications.
3. All utility companies must be notified 24 hours in advance of any construction.
4. Secondary residential streets are designed for 30 mph. traffic speed in accordance with AASHTO Standards.
5. All inlets shall be Howard County Standard unless otherwise shown. All "A" inlets shall be depressed.
6. Storm drain trenches within road rights-of-way shall be backfilled and compacted in accordance with Howard County Road Code.
7. Speed limit for loop portions of streets shall be 15 mph.

SHEET INDEX	
NO.	DESCRIPTION
1	TITLE SHEET
2	PLAN AND PROFILE-HICKORY LOG CIRCLE
3	STANDARD DETAILS
4	STORM DRAIN PROFILES AND SPECIAL DETAILS
5	DRAINAGE AREA MAP
6	DRAINAGE AREA MAP

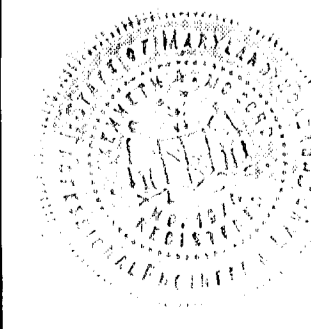


VICINITY MAP
Scale: 1"=2000'

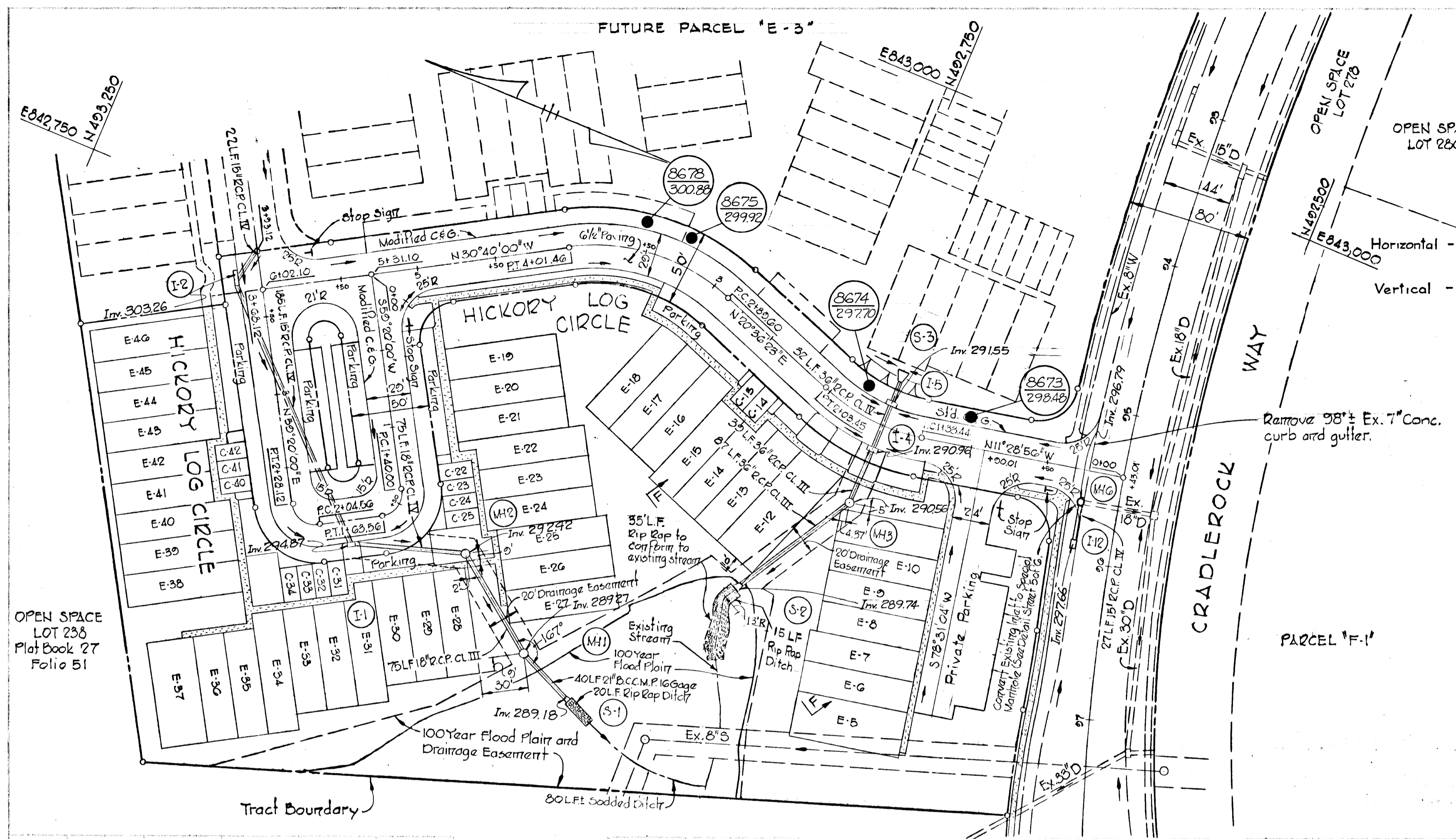
APPROVED
DIVISION OF LAND DEVELOPMENT
AND TRANSPORTATION PLANNING
HOWARD COUNTY, MARYLAND
DATE SEP 10 1975
JAC

DEPARTMENT OF PUBLIC WORKS
D. M. McCreland 9/20/75
CHIEF, BUREAU OF HIGHWAYS DATE
OFFICE OF PLANNING AND ZONING
John Clauson 9/19/75
CHIEF, DIVISION OF LAND DEVELOPMENT AND TRANSPORTATION PLANNING DATE

OWNER and DEVELOPER
HOWARD HOMES COMMUNITIES, INC.
P.O. Box 802
COLUMBIA, MARYLAND



WHITMAN, REQUARDT / ASSOCIATES
ENGINEERS
BALTIMORE, MARYLAND
Kenneth A. McCord
KENNETH A. MCCORD
Registered Engineer
No. 1974



Notes:
 1 For existing storm drainage in Cradlerock Way, see Road Construction Dwg. for the Village of Owen Brown, Section 1 Area dated May 30, 1972.
 2 Existing trees shall not be disturbed.

± CURVE DATA

PC. 1+33.44 TO P.T. 2+03.45
 Δ = 32°25'10"
 R = 125.00'
 A = 70.01'
 T = 35.25'
 Ch = 60.10'
 Brg = N04°33'45"E

PC. 2+80.00 TO P.T. 4+01.46
 Δ = 51°16'10"
 R = 125.00'
 A = 111.86'
 T = 59.29'
 Ch = 108.16'
 Brg = N05°01'47"W

PC. 1+40.00 TO P.T. 1+03.56
 Δ = 90°00'00"
 R = 15.00'
 A = 23.56'
 T = 15.00'
 Ch = 21.21'
 Brg = N75°40'00"W

PC. 2+04.56 TO P.T. 2+28.12
 Δ = 90°00'00"
 R = 15.00'
 A = 23.56'
 T = 15.00'
 Ch = 21.21'
 Brg = N14°20'00"E

DEPARTMENT OF PUBLIC WORKS
R. H. McLeod 9/22/75
 CHIEF, BUREAU OF HIGHWAYS DATE

OFFICE OF PLANNING AND ZONING
M. A. Brown 9/19/75
 CHIEF, DIVISION OF LAND DEVELOPMENT AND TRANSPORTATION PLANNING DATE

⊙ "As-Built" Elevations as of July 13, 1976

REFERENCES
 Horizontal - P.K. Nails @ Stations 77+87.25 (PCC) and 89+31.61 (PRC) - Cradlerock Way
 Vertical - R.R. Spike in Root of 30' Poplar Slump @ N.E. Corner of Cradlerock Way and Hickory Log Circle Elev. 300.15

STORM DRAIN STRUCTURE SCHEDULE

NO.	TYPE	TOP EL. (IN/OUT)	LOCATION
I-1	Standard A-6 Inlet Width: 2.5'	299.08 / 299.95	± of Inlet 15.75' Left of ± Sta. 1+85.56
I-2	Standard A-10 Inlet Width: 2.5'	307.47 / 302.71	± of Inlet 15.75' Left of ± Sta. 3+60
I-4	Standard A-5 Inlet Width: 2.5'	297.77 / 291.18	± of Inlet 15.75' Left of ± Sta. 1+60.44
I-5	Standard A-10 Inlet Width: 2.5'	297.77 / 291.78	± of Inlet 15.75' Right of ± Sta. 1+60.44
MH-1	Standard Manhole	295.50 / 289.60	See Plan
MH-2	Standard Manhole	301.00 / 291.90	See Plan
MH-3	Type "B" Manhole	295.00 / 289.87	See Plan and detail Sheet 5 of 6
S-1	Standard Metal End Section	— / 289.01	See Plan and Profile
S-2	Standard Conc. End Section	— / 282.7	See Plan
MIG	Special Manhole See Sheet 5 of 6	293.80	See Plan
I-12	Standard A-6 Inlet Width: 2.5'	300.50 / 297.40	± of Inlet 23.25' Right of ± Sta. 35+89
S-3	Standard Conc. End Section	— / 292.54	End Section 30.75' Right of ± Sta. 1+60.44

Rev. Date Rev. No. Revision Description

COLUMBIA
 6th ELECTION DISTRICT
 HOWARD COUNTY, MARYLAND

OWNER and DEVELOPER
 HOWARD HOMES COMMUNITIES, INC.

PROJECT AREA
VILLAGE OF OWEN BROWN
 SECTION 1, AREA 1 - RESUBDIVISION OF PARCEL "E-2"

PROJECT TITLE
HICKORY LOG CIRCLE
 PLAN AND PROFILE

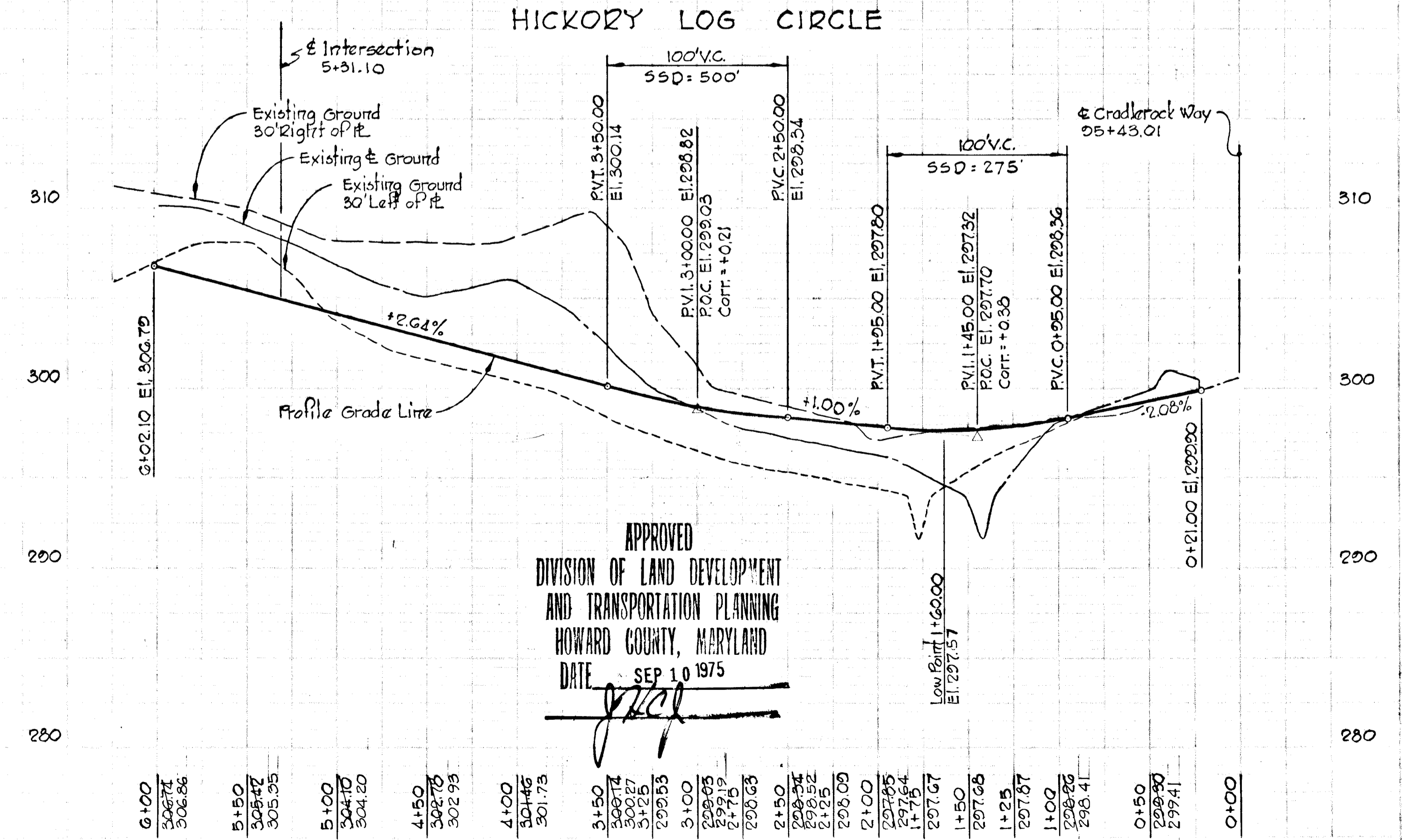
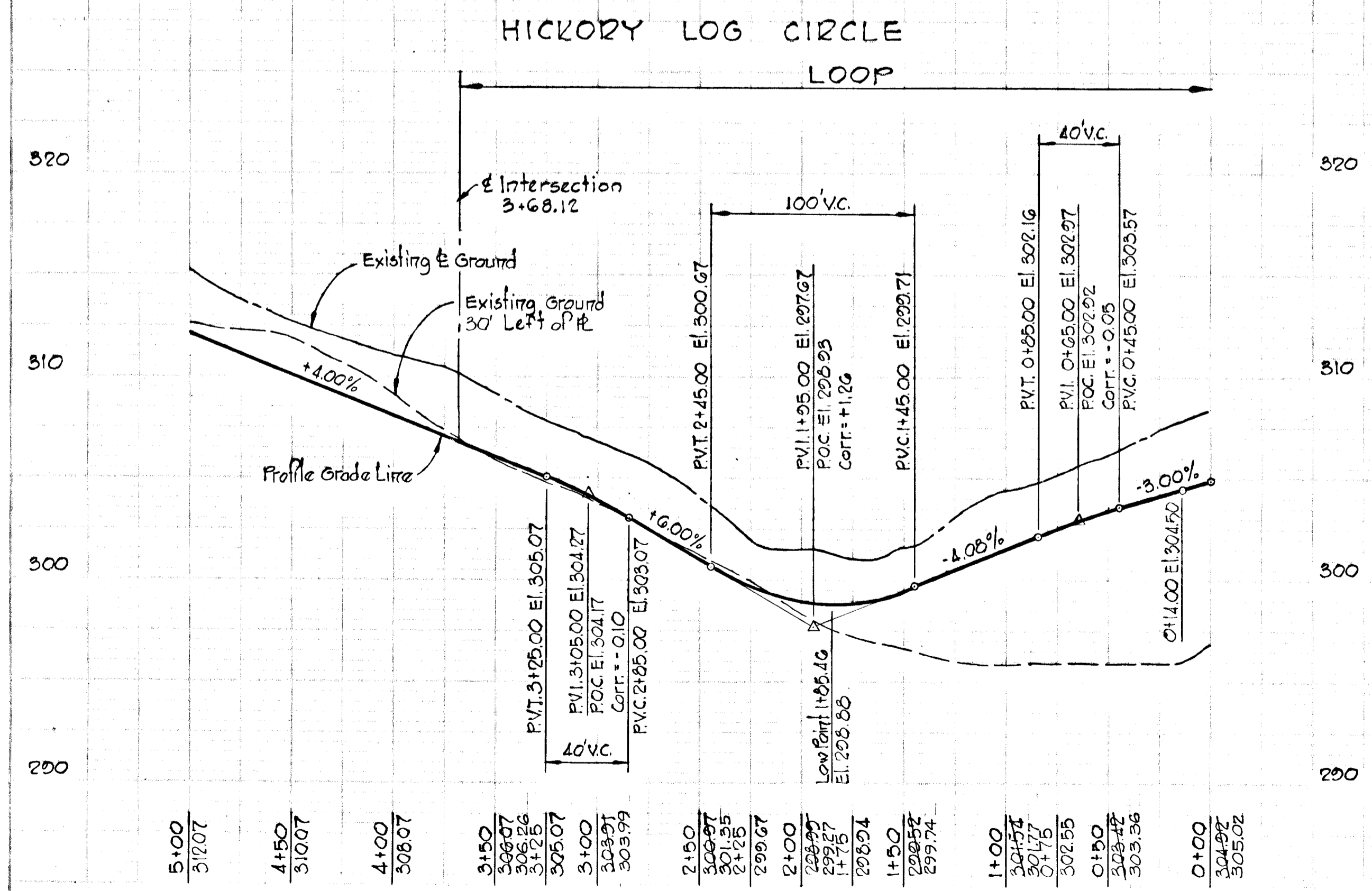
SCALE: AS SHOWN DATE: SEPT. 11, 1975

WHITMAN, REQUARDT & ASSOCIATES
 ENGINEERS
 BALTIMORE, MARYLAND 21202

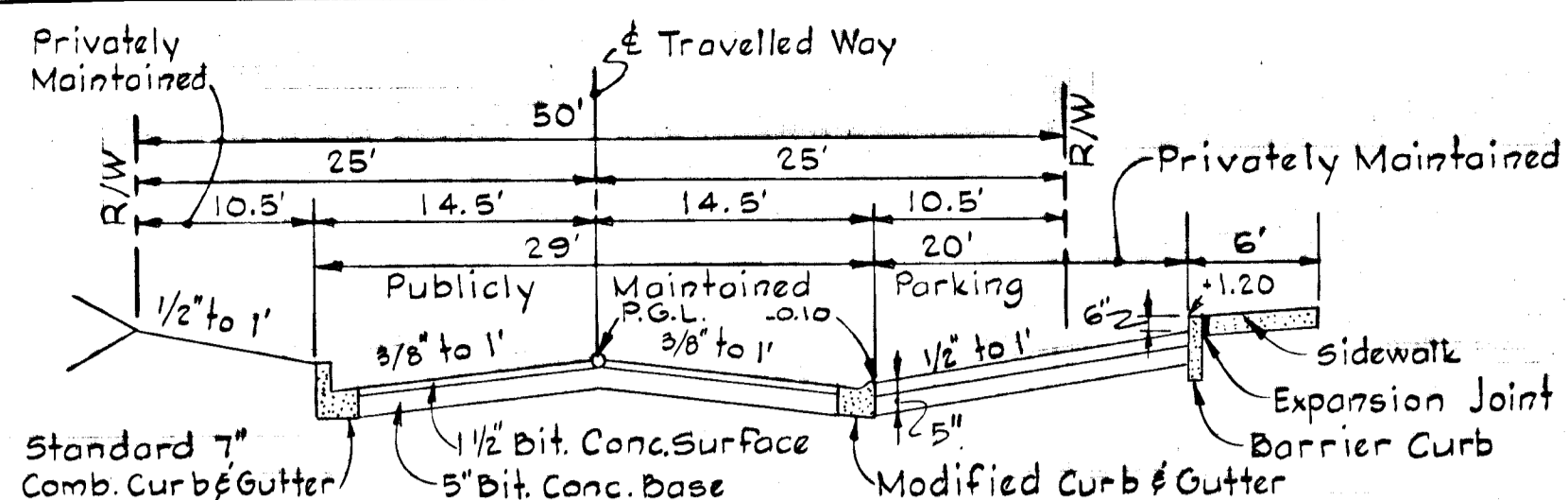
Kenneth A. McLeod
 KENNETH A. McLEOD
 Registered Engineer
 No. 1974

PLAN
 Scale: 1" = 50'

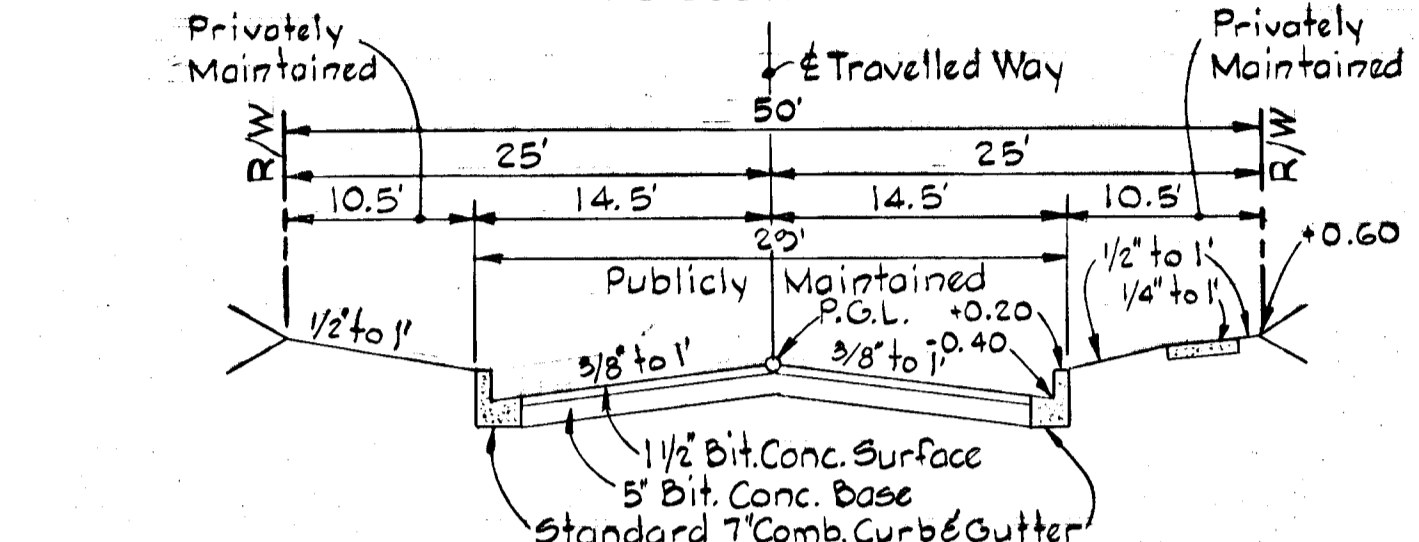
PROFILES
 Scale: Hor. 1" = 50'
 Vert. 1" = 5'



APPROVED
 DIVISION OF LAND DEVELOPMENT
 AND TRANSPORTATION PLANNING
 HOWARD COUNTY, MARYLAND
 DATE: SEP 10 1975
[Signature]



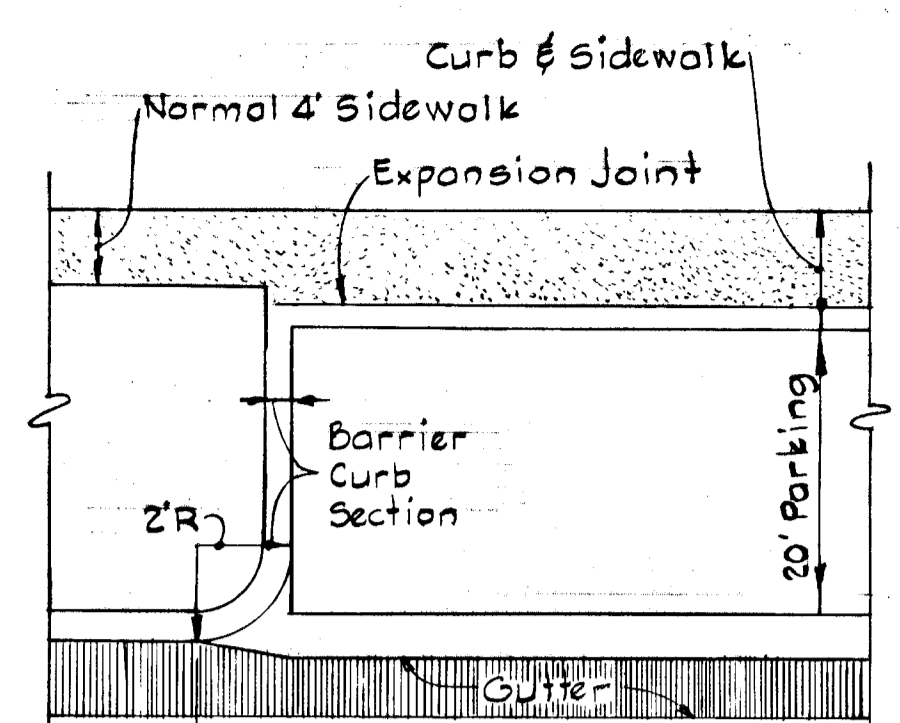
**TYPICAL SECTION
 PARKING ADJACENT TO 29' PAVING**
 No Scale



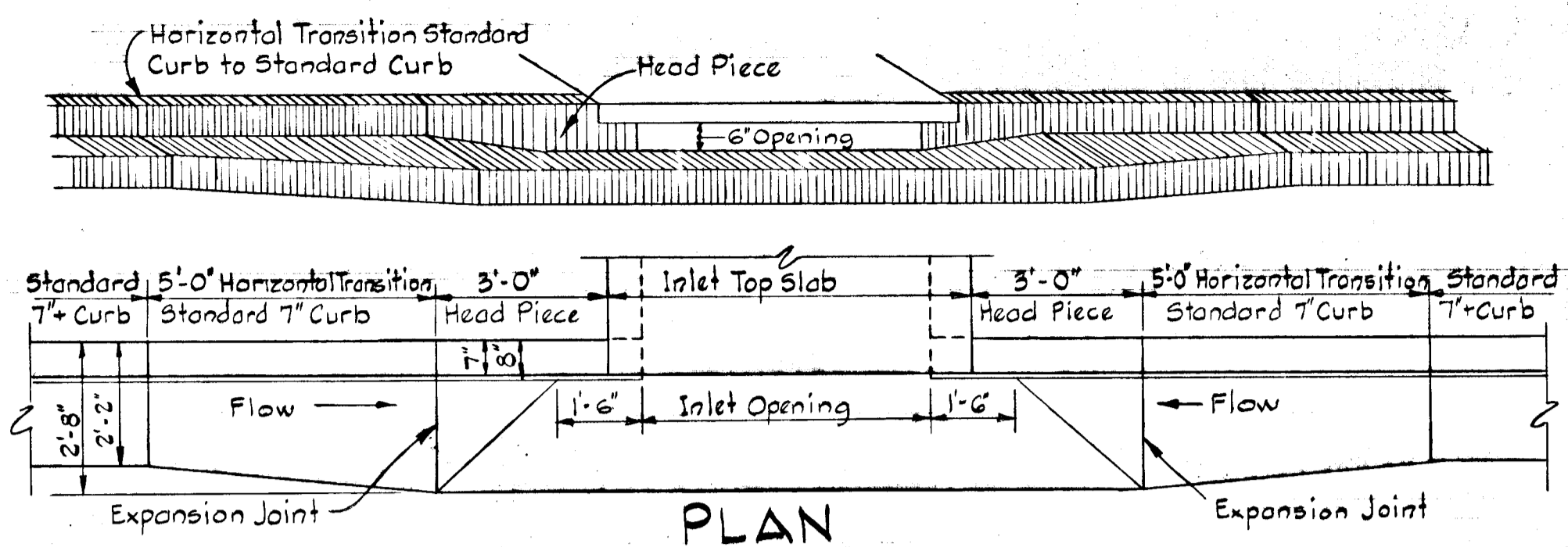
**TYPICAL SECTION
 50' R/W - 29' PAVING**
 No Scale

NOTES:

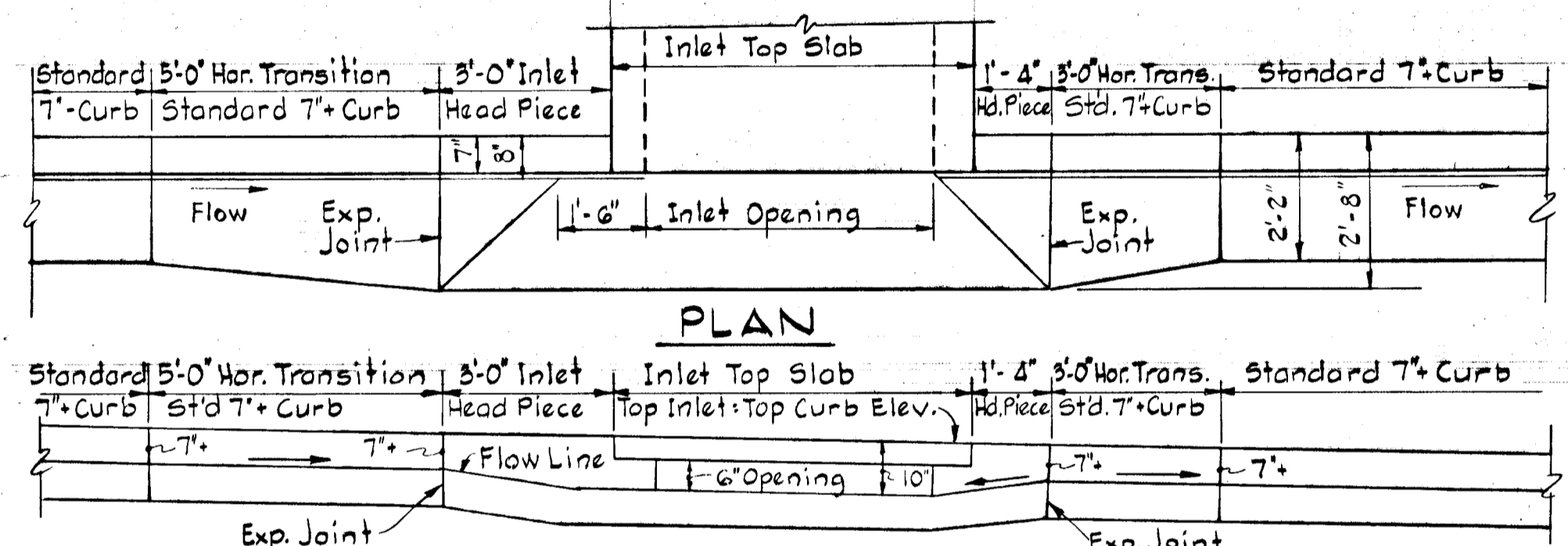
- Standard 7" Comb. and Modified Curb and Gutter shall be in accordance with County Standard D-40, Page 65.
- Paving (6 1/2") shall be in accordance with County Standard D-11, Page 66.
- Transition from Standard 7" Comb. Curb and Gutter to Modified Curb and Gutter shall be in accordance with detail shown on this sheet.
- Tack Coat is required in accordance with Section C-31-4 of the Howard County Road Construction Code and Standard Spec.
- Base will be primed in accordance with C-30-3 as provided in the Howard County Road Construction Code and Standard Spec.
- Paving (5") shall be in accordance with County Standard D-13, Page 68.
- Sidewalks shall be in accordance with County Standard D-14, Page 69.



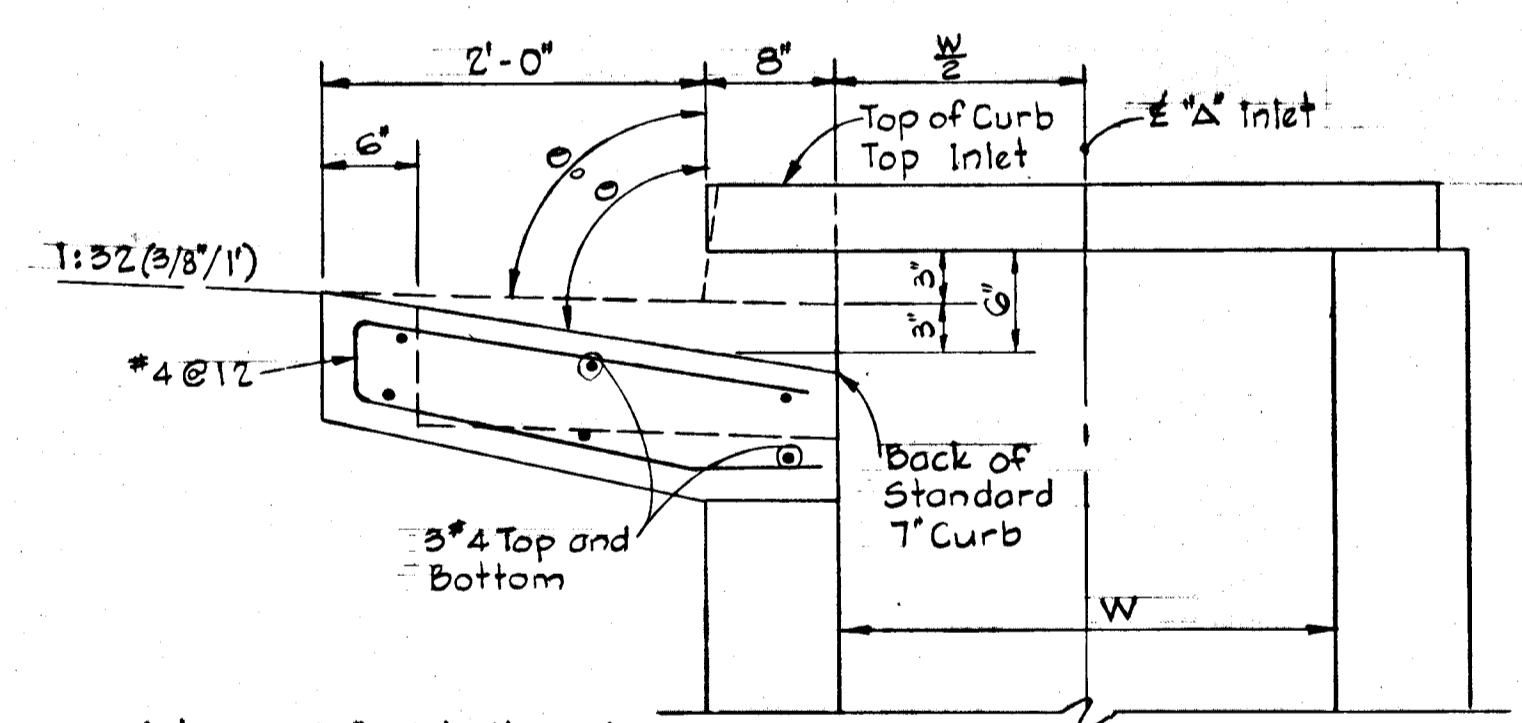
CURB & GUTTER TRANSITION DETAIL
 No Scale



**SECTION ALONG FLOW LINE
 SLUMPED 'A' INLETS - STANDARD CURB**



**SECTION ALONG FLOW LINE
 'A' INLETS - STANDARD CURB**

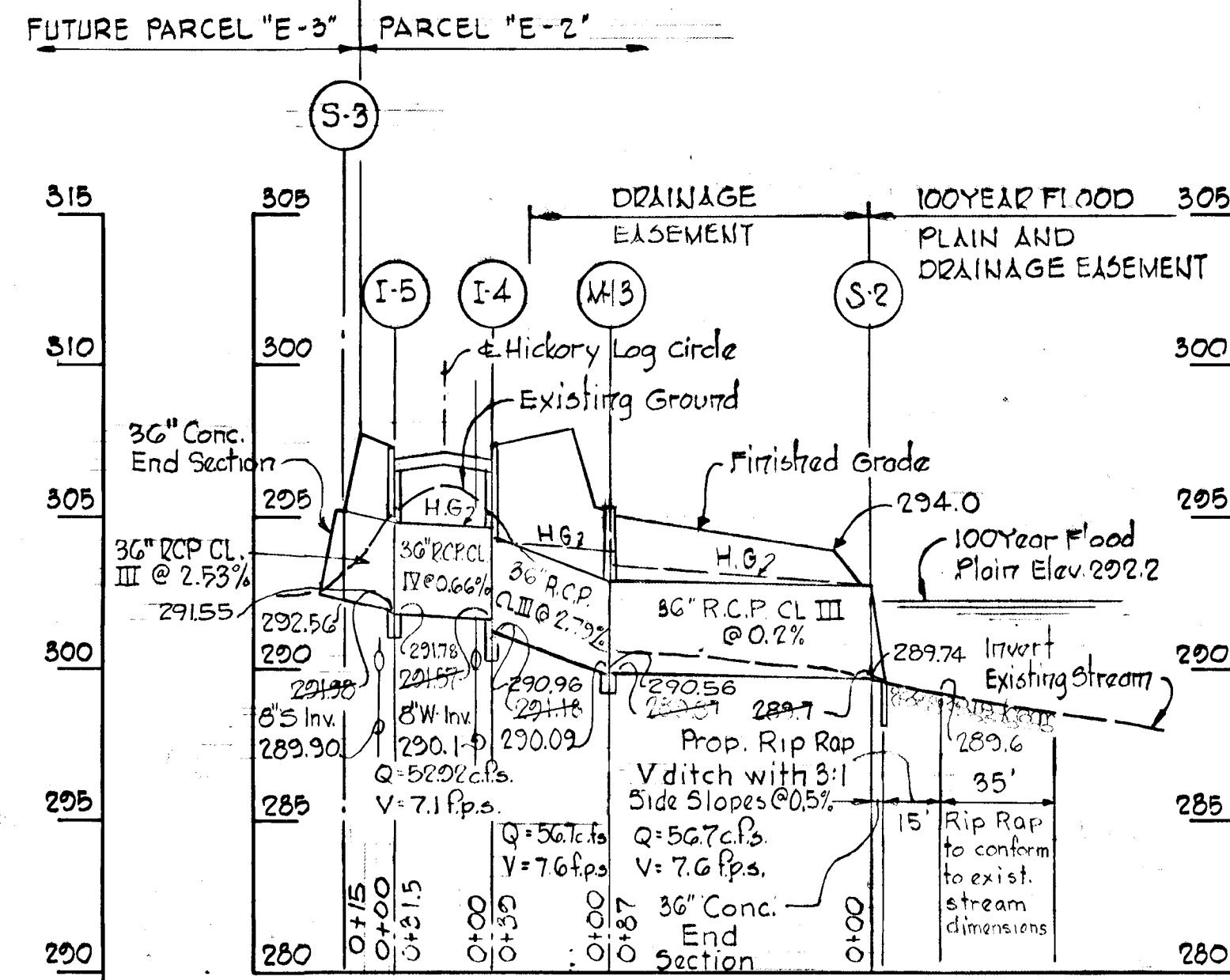
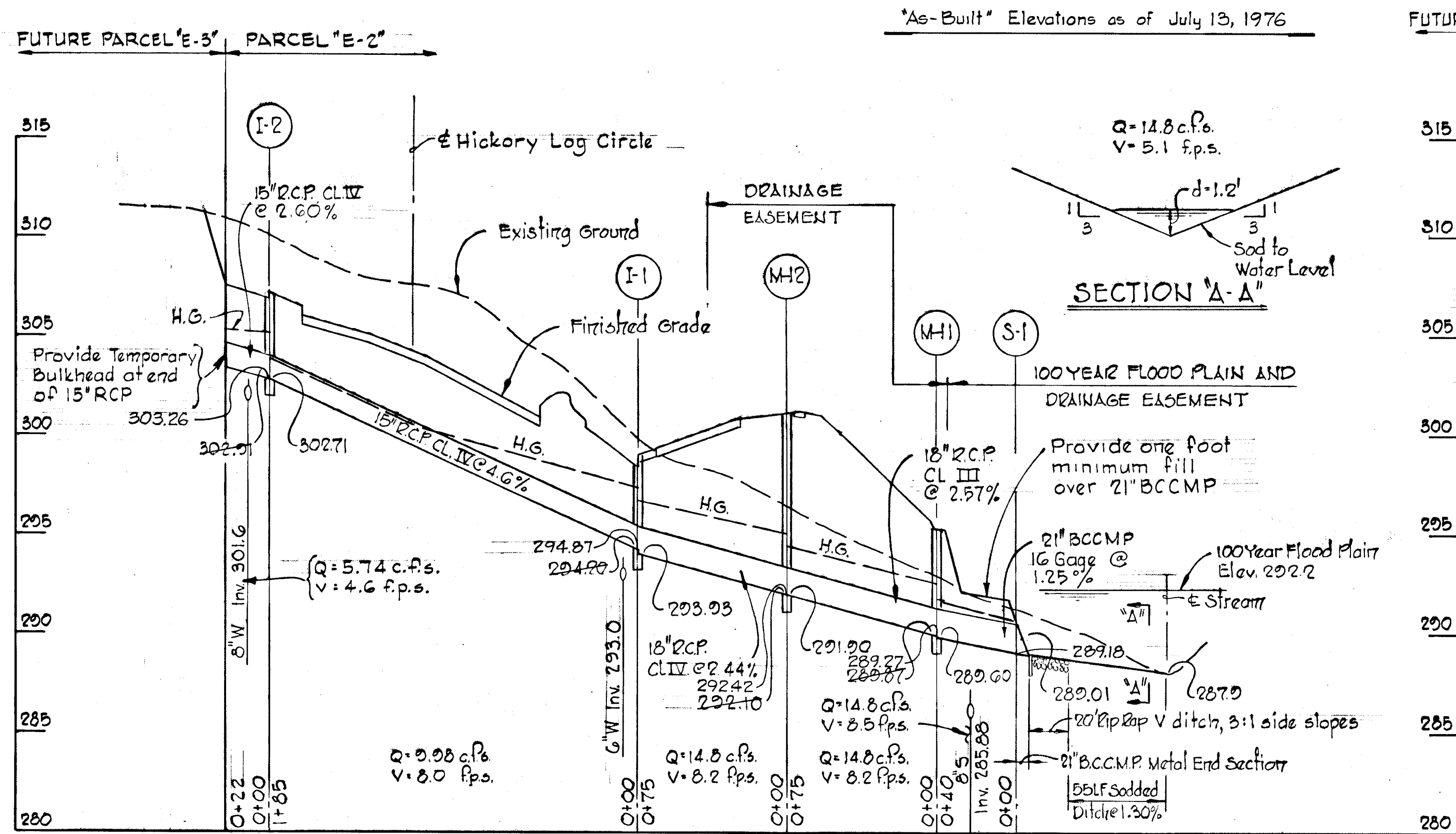


Note: For 'A' Inlet dimensions and structural details, see standard Howard County Drawing 64-A page 110-A

SECTION - 'A' INLET STANDARD CURB

APPROVED
 DIVISION OF LAND DEVELOPMENT AND TRANSPORTATION PLANNING
 HOWARD COUNTY, MARYLAND
 DATE SEP 10, 1975
J.H.C.

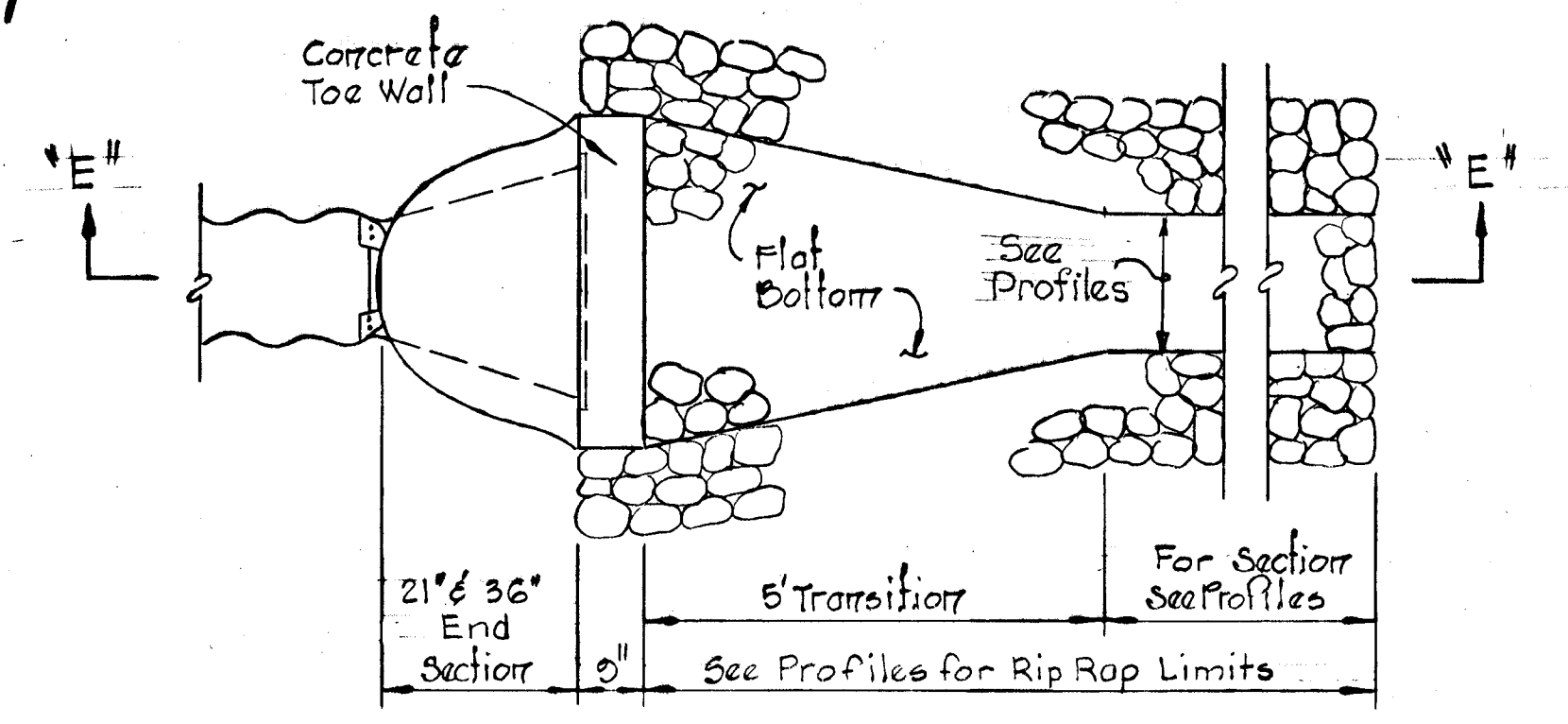
Rev. Date	Rev. No.	Revision Description
COLUMBIA		
6 TH ELECTION DISTRICT HOWARD COUNTY, MARYLAND		
OWNER and DEVELOPER HOWARD HOMES COMMUNITIES, INC.		
PROJECT AREA		
VILLAGE OF OWEN BROWN SECTION 1, AREA 1		
PROJECT TITLE		
STANDARD DETAILS		
Scale: As Shown		Date: SEPT. 11, 1975
WHITMAN, REQUARDT & ASSOCIATES ENGINEERS BALTIMORE, MARYLAND 21202		
<i>Kenneth A. McCord</i> KENNETH A. McCORD Registered Engineer No. 1974		



APPROVED
DIVISION OF LAND DEVELOPMENT AND TRANSPORTATION PLANNING
HOWARD COUNTY, MARYLAND
DATE SEP 10 1975

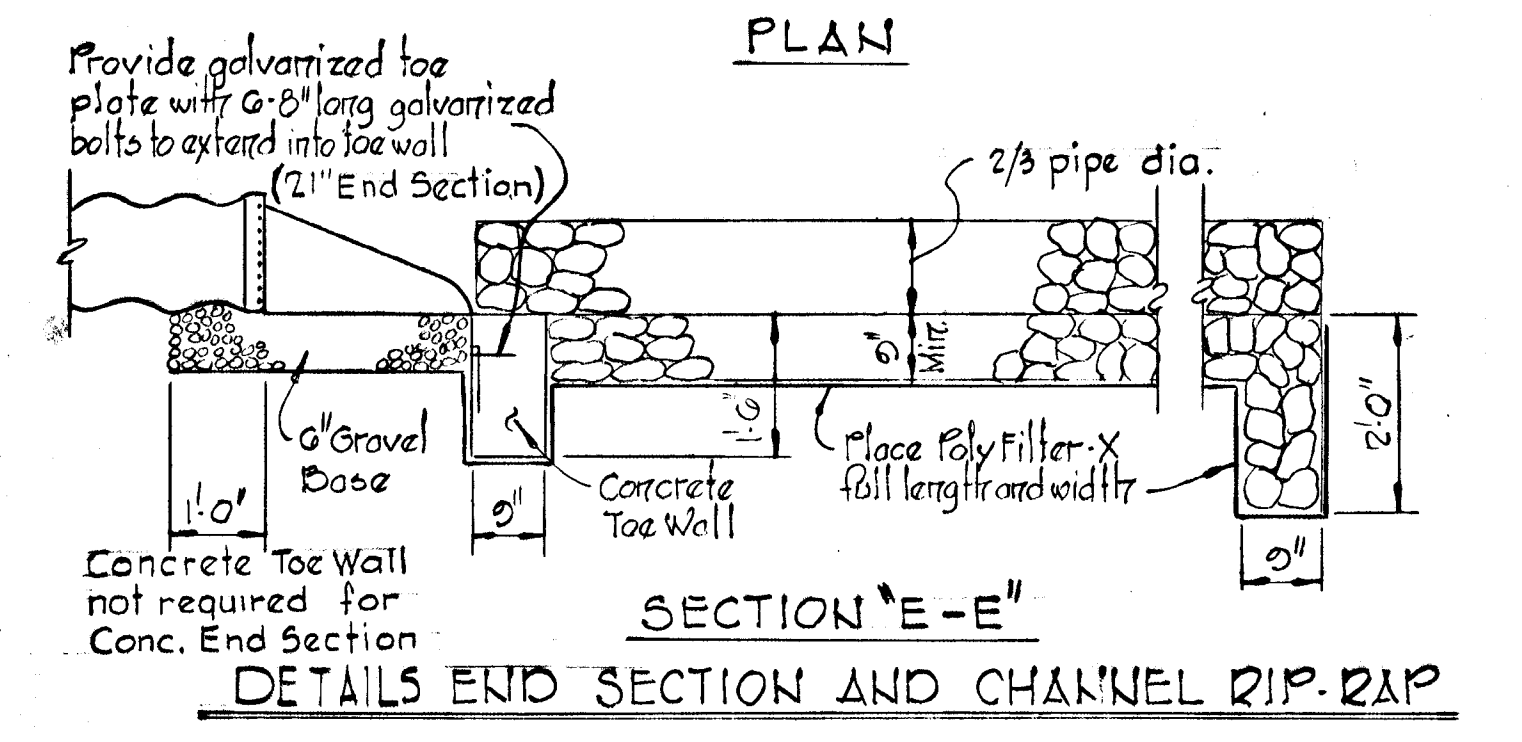
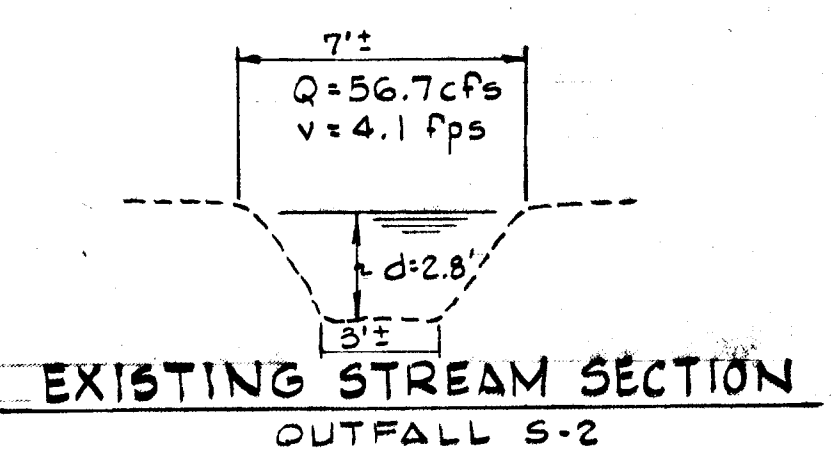
DEPARTMENT OF PUBLIC WORKS
L.H. Wessend
CHIEF, BUREAU OF HIGHWAYS
OFFICE OF PLANNING AND ZONING
J.H. Lawson
CHIEF, DIVISION OF LAND DEVELOPMENT AND TRANSPORTATION PLANNING

9/22/75
9/19/75

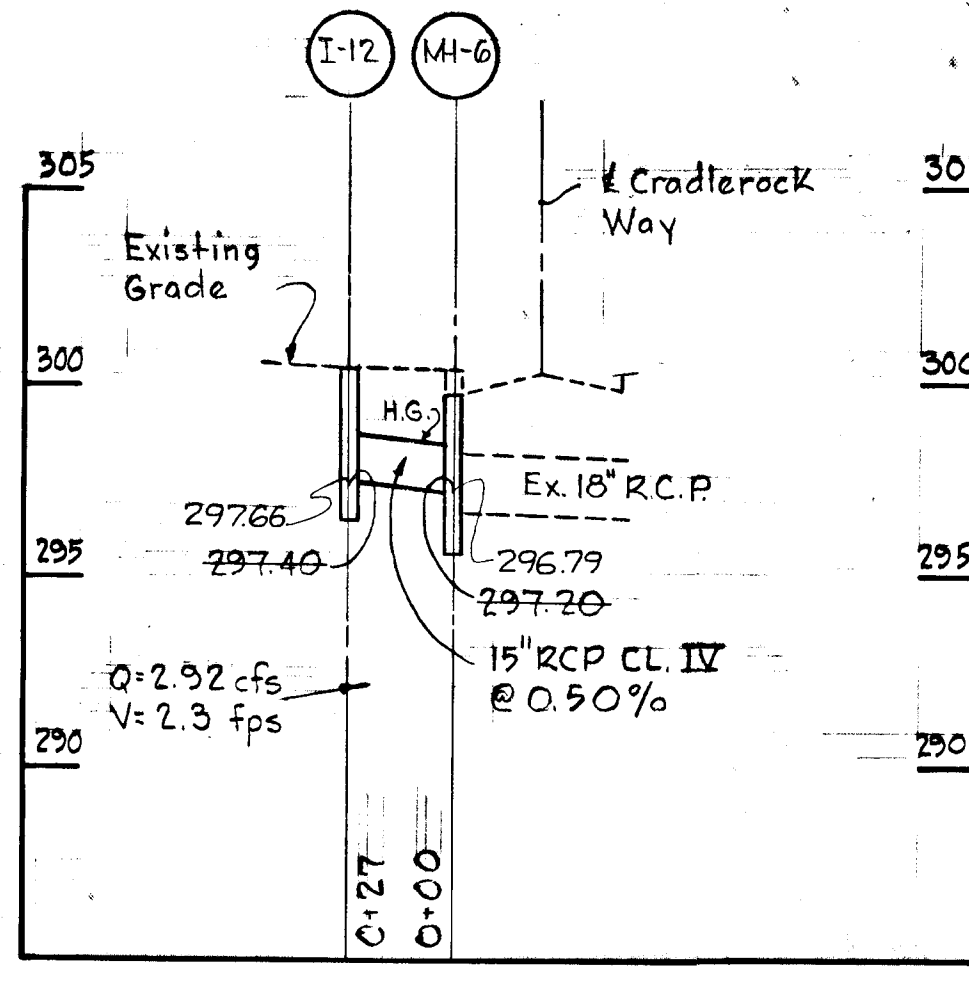
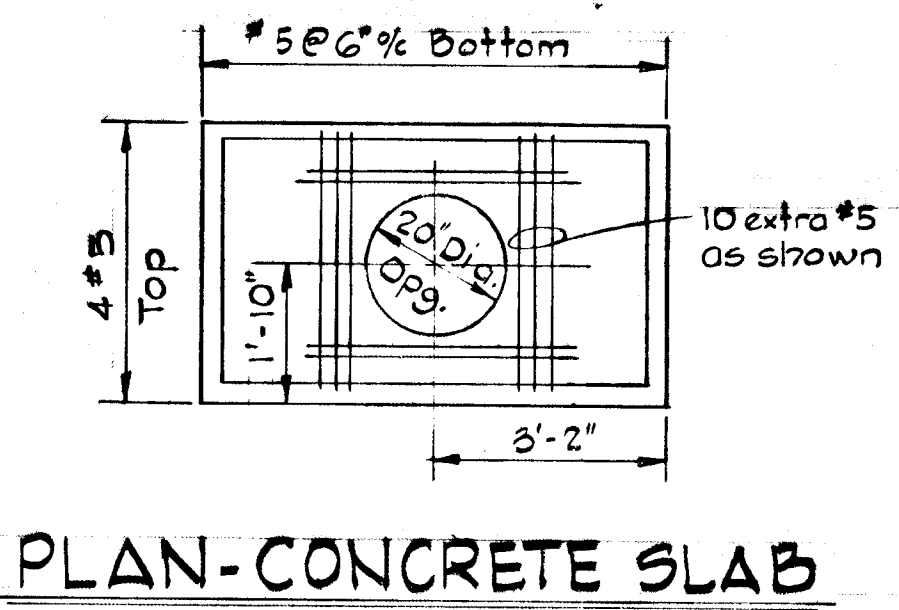
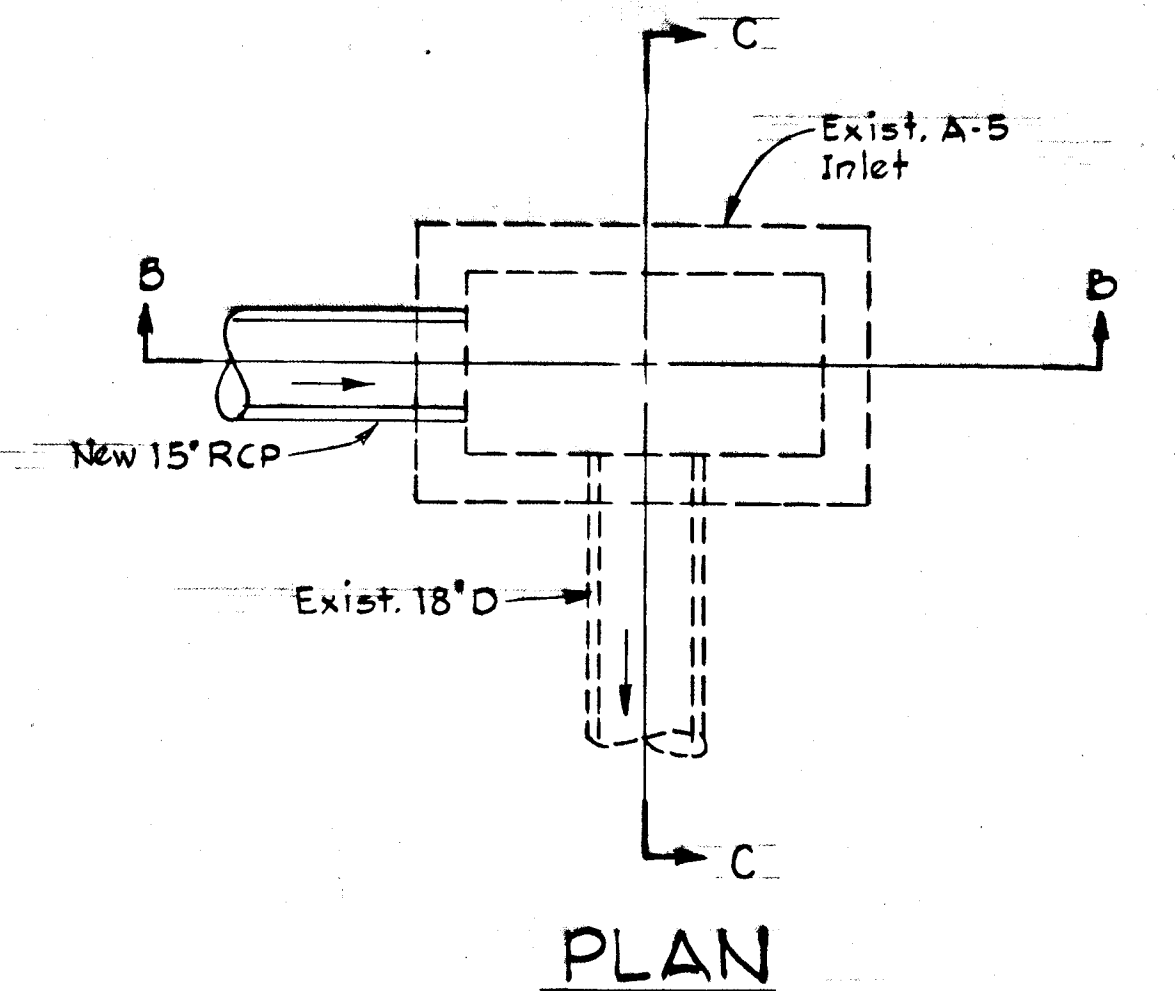


PROFILE
Scale: Hor. 1" = 50'
Vert. 1" = 5'

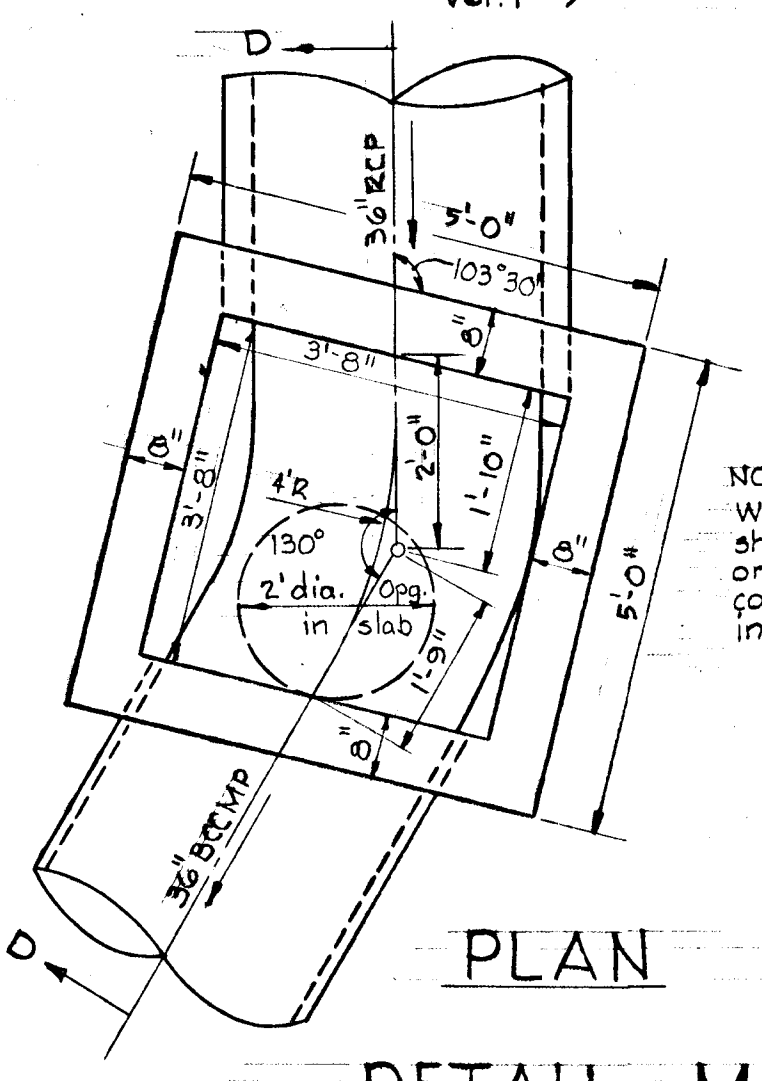
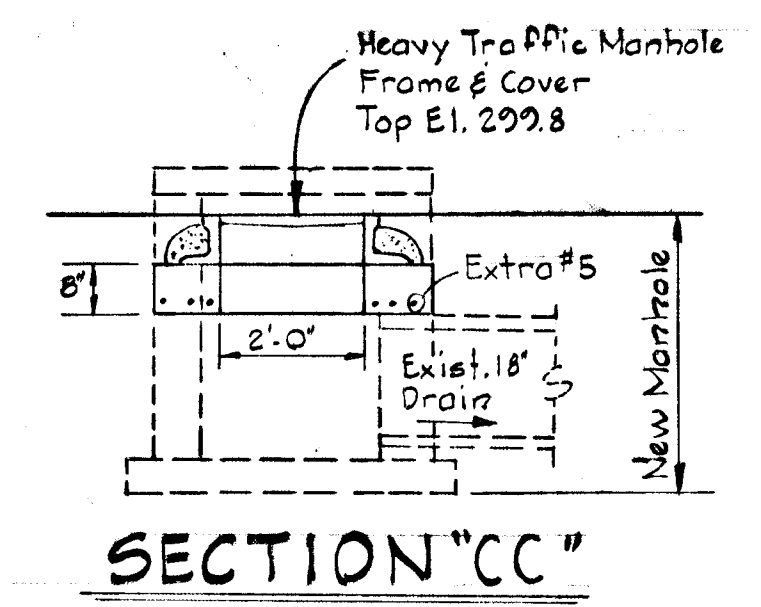
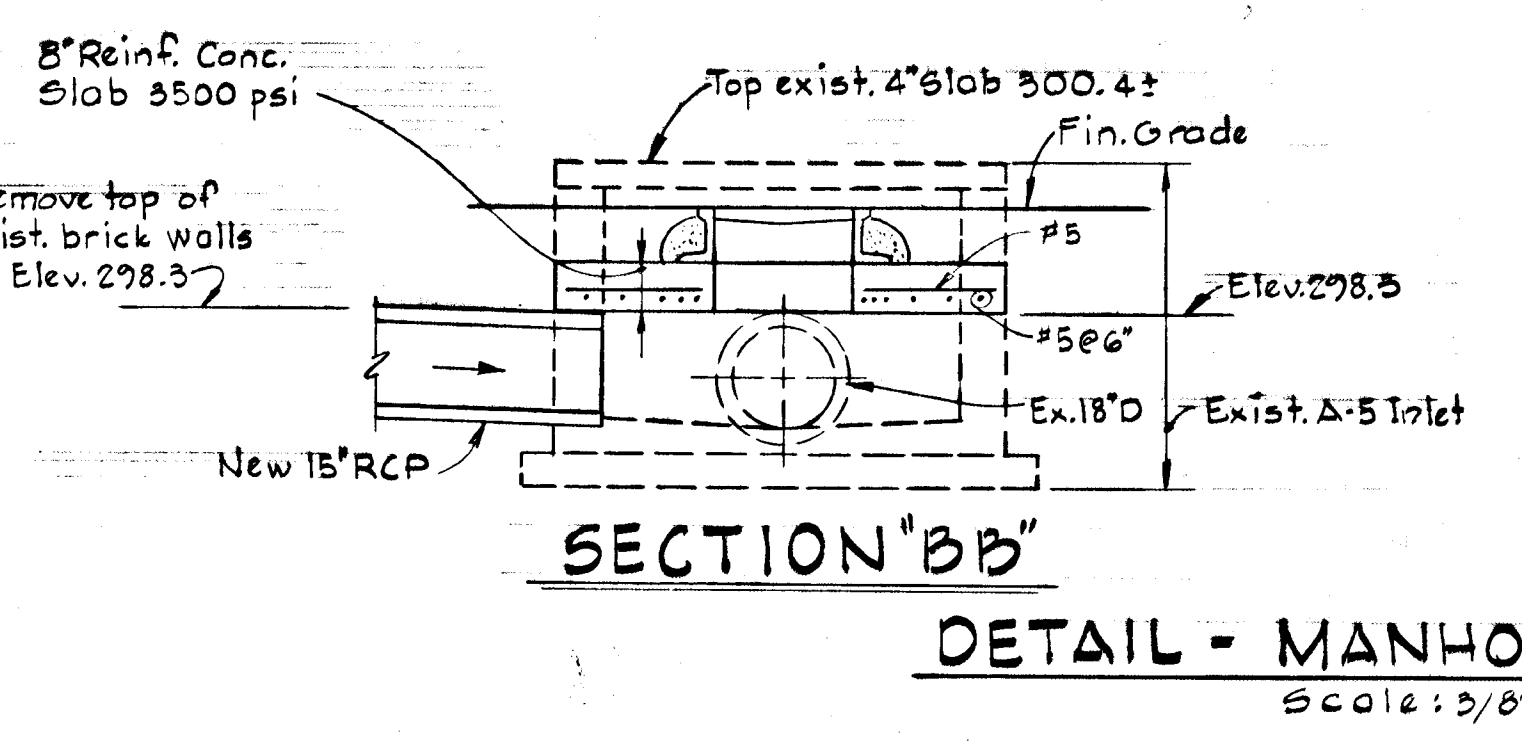
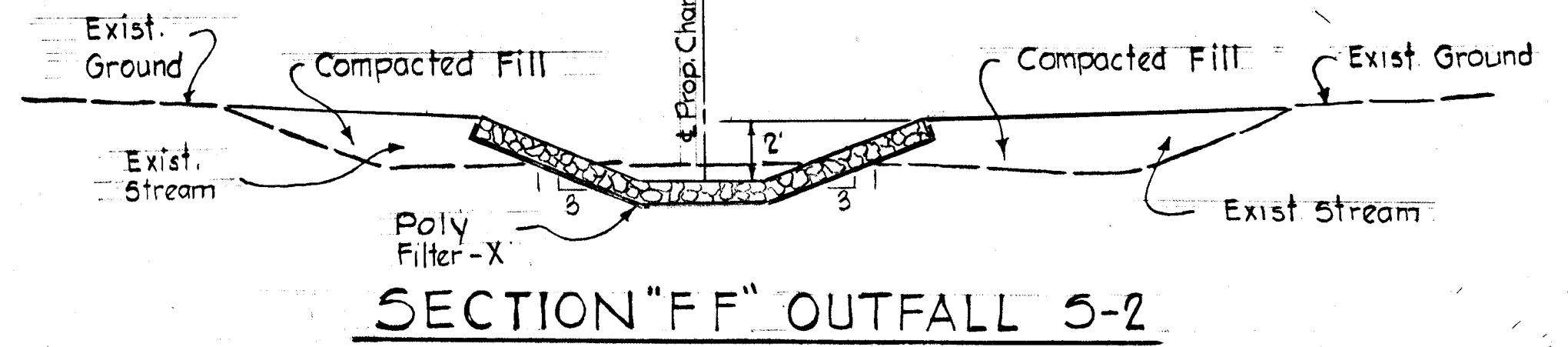
PROFILE
Scale: Hor. 1" = 50'
Vert. 1" = 5'



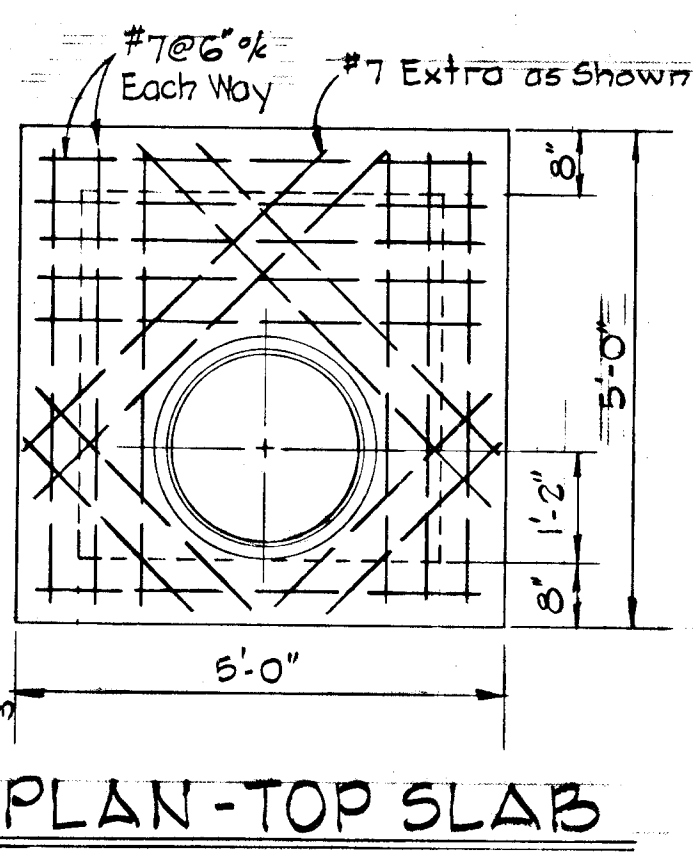
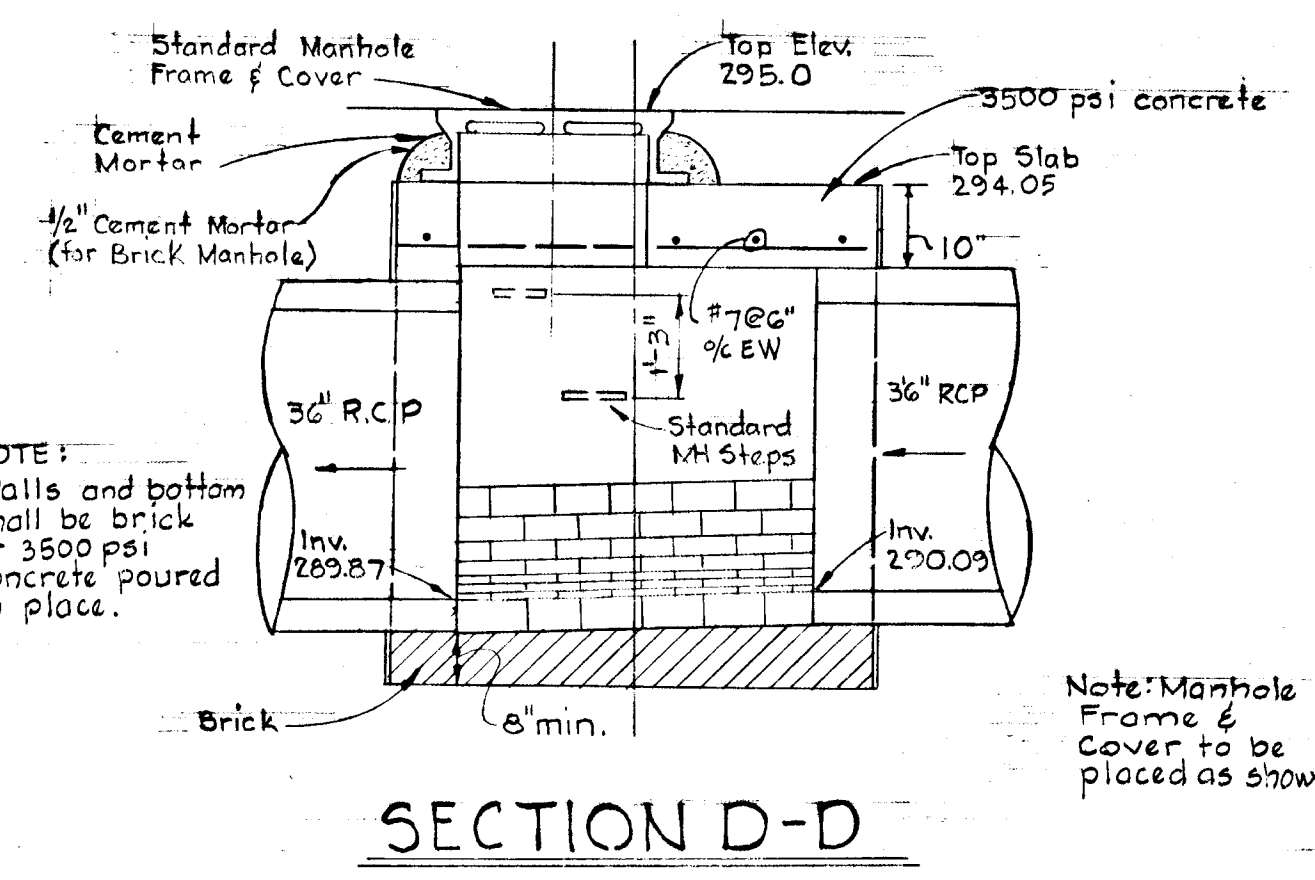
OUTFALLS S-1 AND S-2
No Scale



PROFILE
Scale: Hor. 1" = 50'
Vert. 1" = 5'



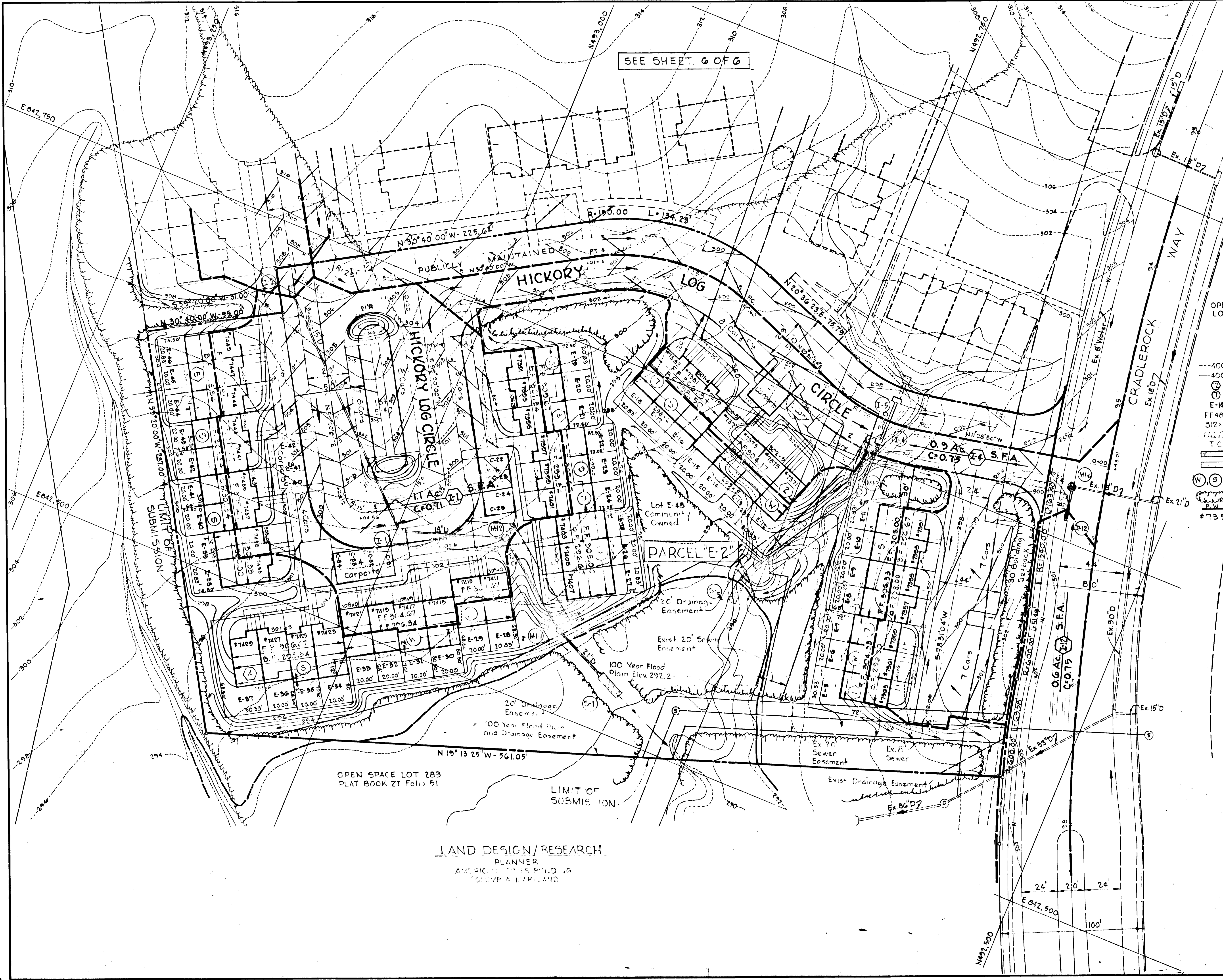
DETAIL - MANHOLE MH-3
Scale: 1/2" = 1'-0"



Rev. Date	Rev. No.	Revision Description
COLUMBIA 4 TH ELECTION DISTRICT HOWARD COUNTY, MARYLAND OWNER and DEVELOPER HOWARD HOMES COMMUNITIES, INC. PROJECT AREA VILLAGE OF OWEN BROWN SECTION AREA 1 Resubdivision of Parcel "E-2" PROJECT TITLE STORM DRAIN PROFILES AND SPECIAL DETAILS SCALE: As Shown DATE: SEPT. 11, 1975 WHITMAN, REQUARDT & ASSOCIATES ENGINEERS BALTIMORE, MARYLAND 21202 Kenneth A. McCord Registered Engineer No. 1974		

APPROVED
 DIVISION OF LAND DEVELOPMENT
 AND TRANSPORTATION PLANNING
 HOWARD COUNTY, MARYLAND
 DATE SEP 10 1975
[Signature]

SEE SHEET G OF G



LEGEND

- 400--- Existing Contours (2' interval)
- 400- Proposed Contours (1' interval)
- (1) Building Group Number
- (2) Number of Dwellings in Building Group
- (3) Lot Number
- E-16 Proposed First Floor Elevation
- 312.00 Proposed Spot Elevation
- Existing Tree Line
- TC Top Curb
- Travelled Way (To be Publicly Maintained)
- Concrete Walk --- Mucosa Wall ---
- (W) (S) (E) Building Types (See Cover Sheet)
- Trees To Remain
- Railroad Tie Retaining Wall
- Street Address #7391

PARCEL "F-1"

NOTE:
 For Drainage Areas,
 Existing storm drain
 in Cradlerock Way,
 See Exhibit No. 3.

Rev. Date	Rev. No.	Revision Description
COLUMBIA		
6 TH ELECTION DISTRICT HOWARD COUNTY, MARYLAND		
OWNER and DEVELOPER HOWARD HOMES COMMUNITIES, INC		
Project Area		
VILLAGE OF OWEN BROWN		
SECTION 1 - AREA 1 Resubdivision of Parcel "E-2"		
Project Title		
DRAINAGE AREA MAP		
Scale: 1"=50'		Date: SEPT. 11, 1975
WHITMAN, REQUARDT & ASSOCIATES ENGINEERS BALTIMORE, MARYLAND		
<i>Kenneth A. McCord</i> KENNETH A. McCORD Registered Engineer No. 1974		

OPEN SPACE LOT 283
 PLAT BOOK 27 Foli 51

LIMIT OF
 SUBMISSION

LAND DESIGN/RESEARCH
 PLANNER
 AMERICAN STATES BUILDING
 COMPANY, MARYLAND

THE HOWARD RESEARCH
 AND DEVELOPMENT CORP
 463/196

Note:
 For Drainage Area
 Inlet I-11, See
 Exhibit No. 3

Note: For Drainage Area I-10
 See Exhibit No. 3

11.3 Ac. SFA
 C=0.65 School Site

1.6 Ac. SFA
 C=0.70

PARCEL "E-3"

0.38 Ac. SFA
 C=0.55

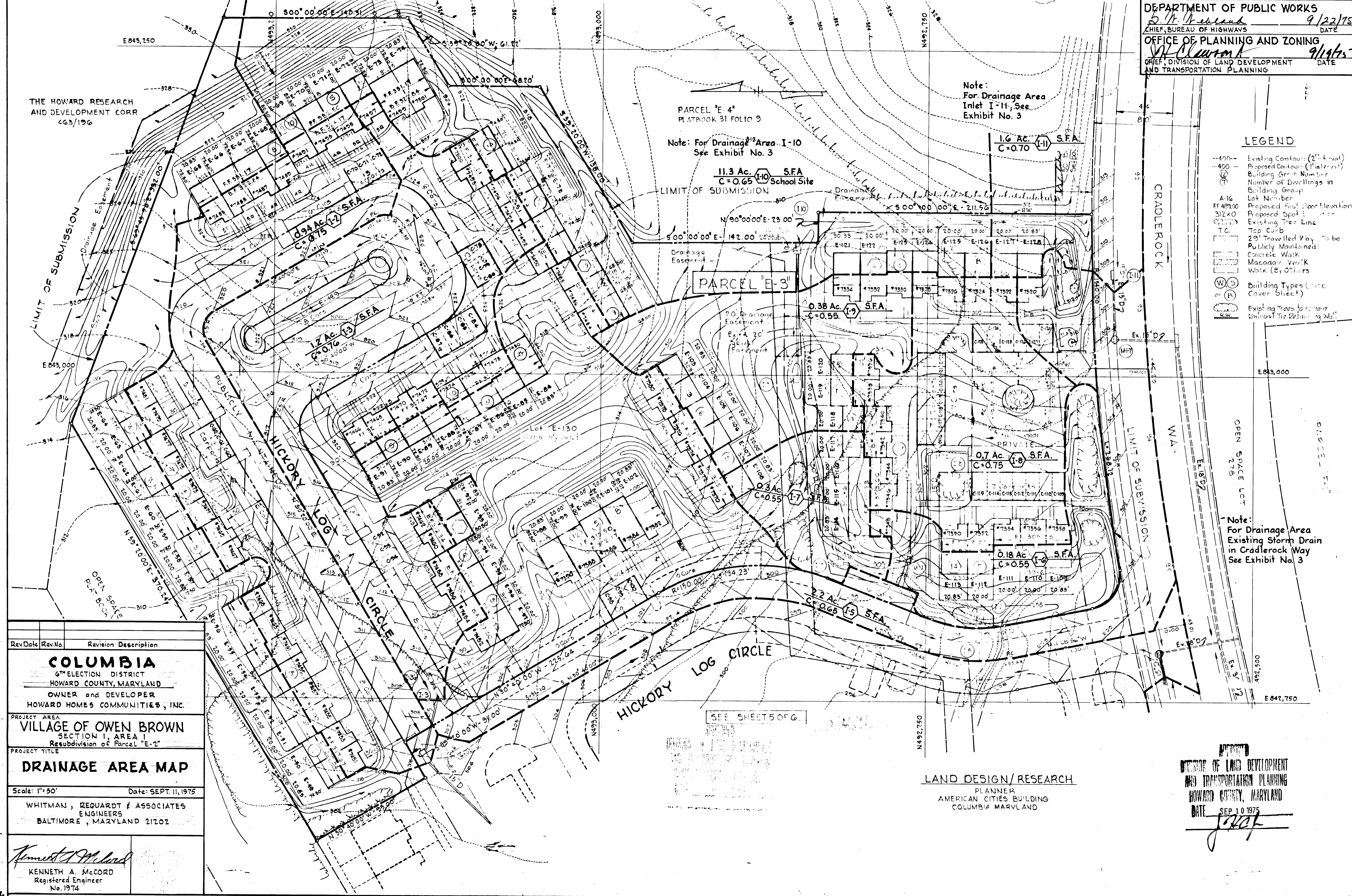
0.7 Ac. SFA
 C=0.75

0.18 Ac. SFA
 C=0.55

2.2 Ac. SFA
 C=0.65

- LEGEND**
- 400- Existing Contours (2' Interval)
 - 400- Proposed Contours (1' Interval)
 - (N) Building Group Number
 - (N) Number of Dwellings in Building Group
 - A-16 Lot Number
 - FF 429.00 Proposed First Floor Elevation
 - 3/2x0 Proposed Spot Elevation
 - (T) Existing Tree Line
 - T.C. Top Curb
 - 2' Traveled Way to be Publicly Maintained
 - Concrete Walk
 - Macadam Walk
 - Walk (By Others)
 - (W) Building Types (see Cover Sheet)
 - (R) Building Types (see Cover Sheet)
 - (T) Existing Trees to remain (Without Retaining Wall)

Note:
 For Drainage Area
 Existing Storm Drain
 in Cradlerock Way
 See Exhibit No. 3



RevDate	RevNo.	Revision Description
<p>COLUMBIA 6TH ELECTION DISTRICT HOWARD COUNTY, MARYLAND OWNER and DEVELOPER HOWARD HOMES COMMUNITIES, INC.</p>		
<p>PROJECT AREA VILLAGE OF OWEN BROWN SECTION 1, AREA 1 Resubdivision of Parcel "E-2"</p>		
<p>PROJECT TITLE DRAINAGE AREA MAP</p>		
Scale: 1"=50'		Date: SEPT. 11, 1975
WHITMAN, REQUARDT & ASSOCIATES ENGINEERS BALTIMORE, MARYLAND 21202		
Kenneth A. McCord Registered Engineer No. 1974		

LAND DESIGN/RESEARCH
 PLANNER
 AMERICAN CITIES BUILDING
 COLUMBIA MARYLAND

APPROVED
 DIVISION OF LAND DEVELOPMENT
 AND TRANSPORTATION PLANNING
 HOWARD COUNTY, MARYLAND
 DATE SEP 10 1975
[Signature]