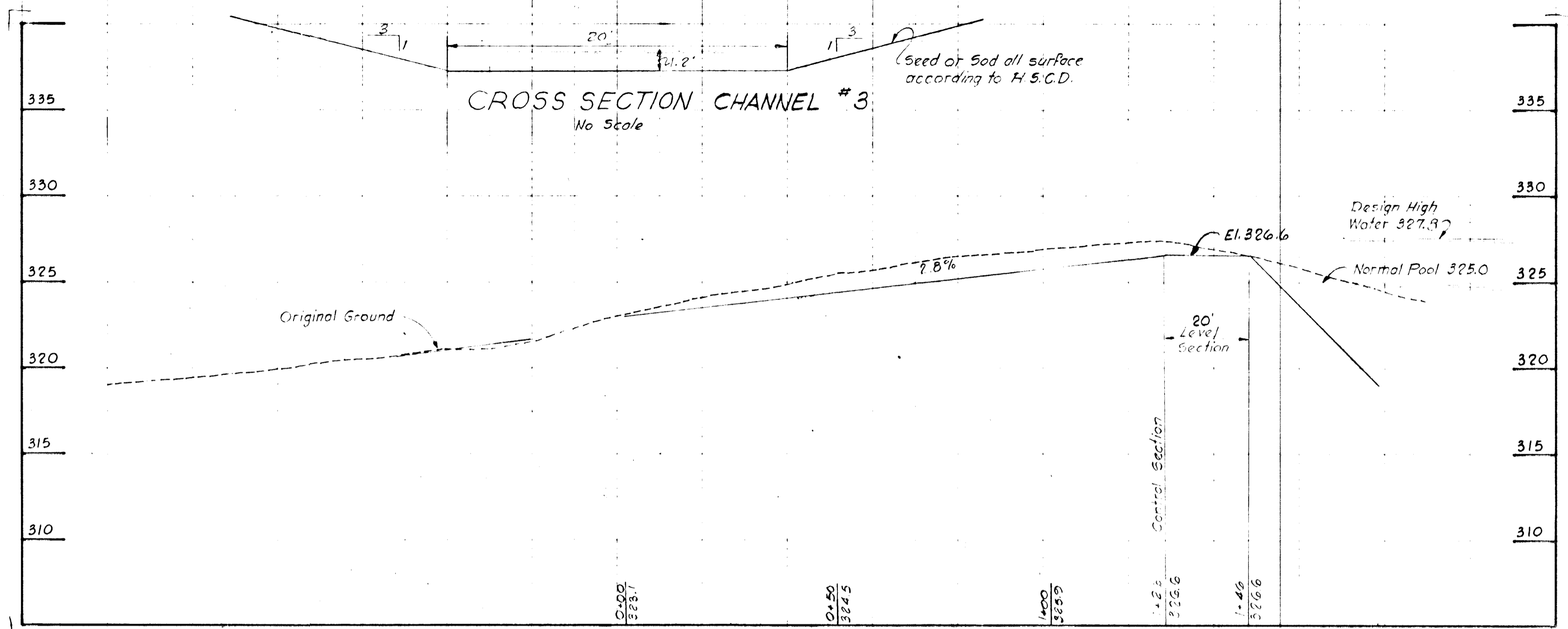
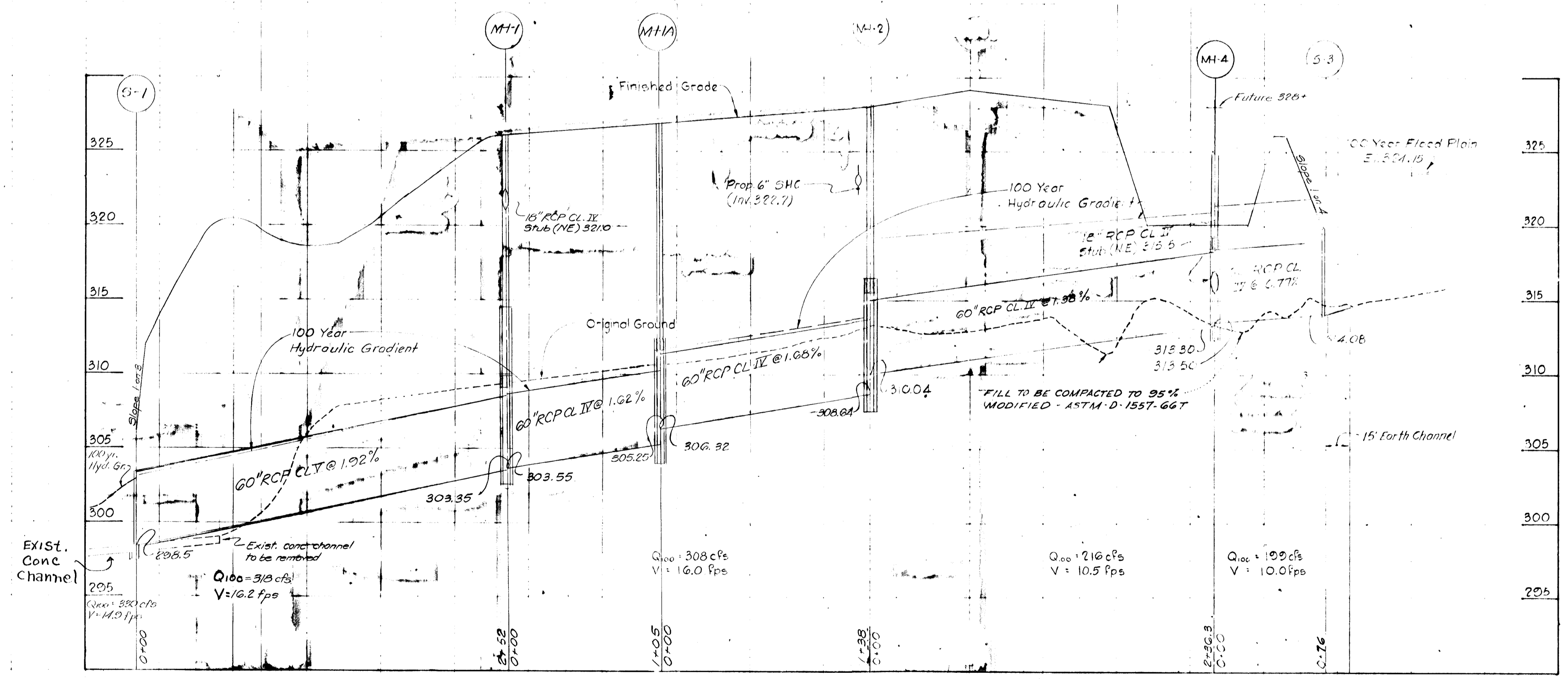


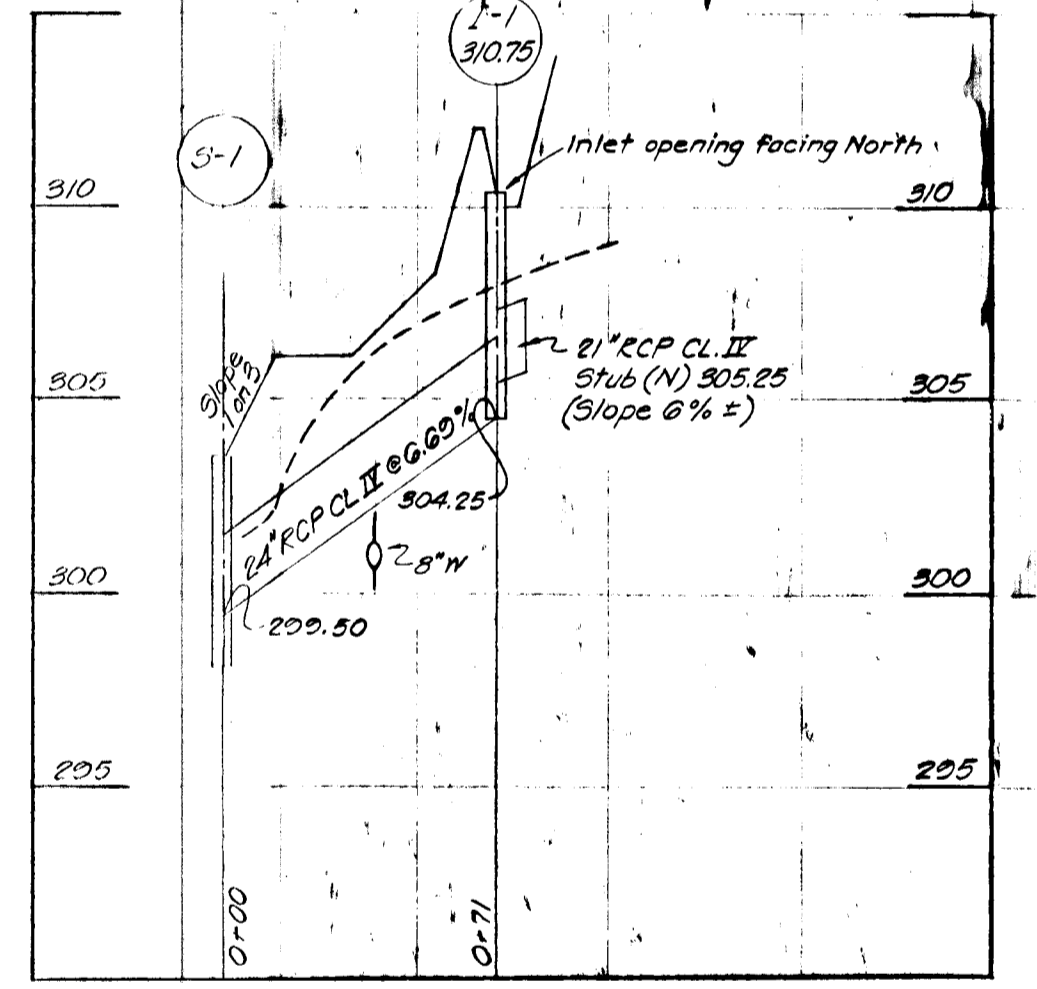
SEDIMENT BASIN #3 AND FUTURE PERMANENT POND  
 Scale: Hor: 1" = 50'  
 Ver: 1" = 5'



CROSS SECTION CHANNEL #3  
 No Scale  
 EMERGENCY SPILLWAY FOR POND #3  
 Scale: Hor: 1" = 20'  
 Ver: 1" = 5'



Scale: Hor: 1" = 50'  
 Ver: 1" = 6'

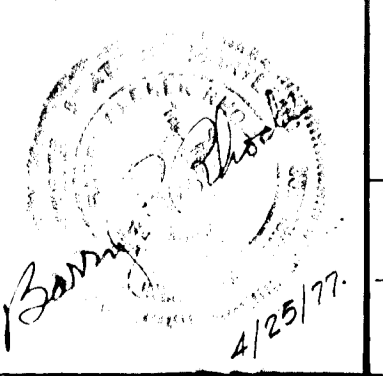


No	Revision	Date
1	Revised Grading Plan	5-15-74
2	Revised S.D. Alignment M1-2 & S-3	5-15-74
3	Revised Emergency Spillway	5-15-74
4	Revised Location & Design S-2	11-15-74
5	Revised chain M1-1 to S-1	4-25-77

COLUMBIA  
 VILLAGE OF OWEN BROWN  
 SECTION 1, AREA 3  
 HOWARD COUNTY, MARYLAND  
 6<sup>TH</sup> ELECTION DIST.

stottler stagg & associates  
 affiliate  
 brevard engineering company  
 architects engineers planners

TEACHERS BUILDING  
 COLUMBIA MARYLAND

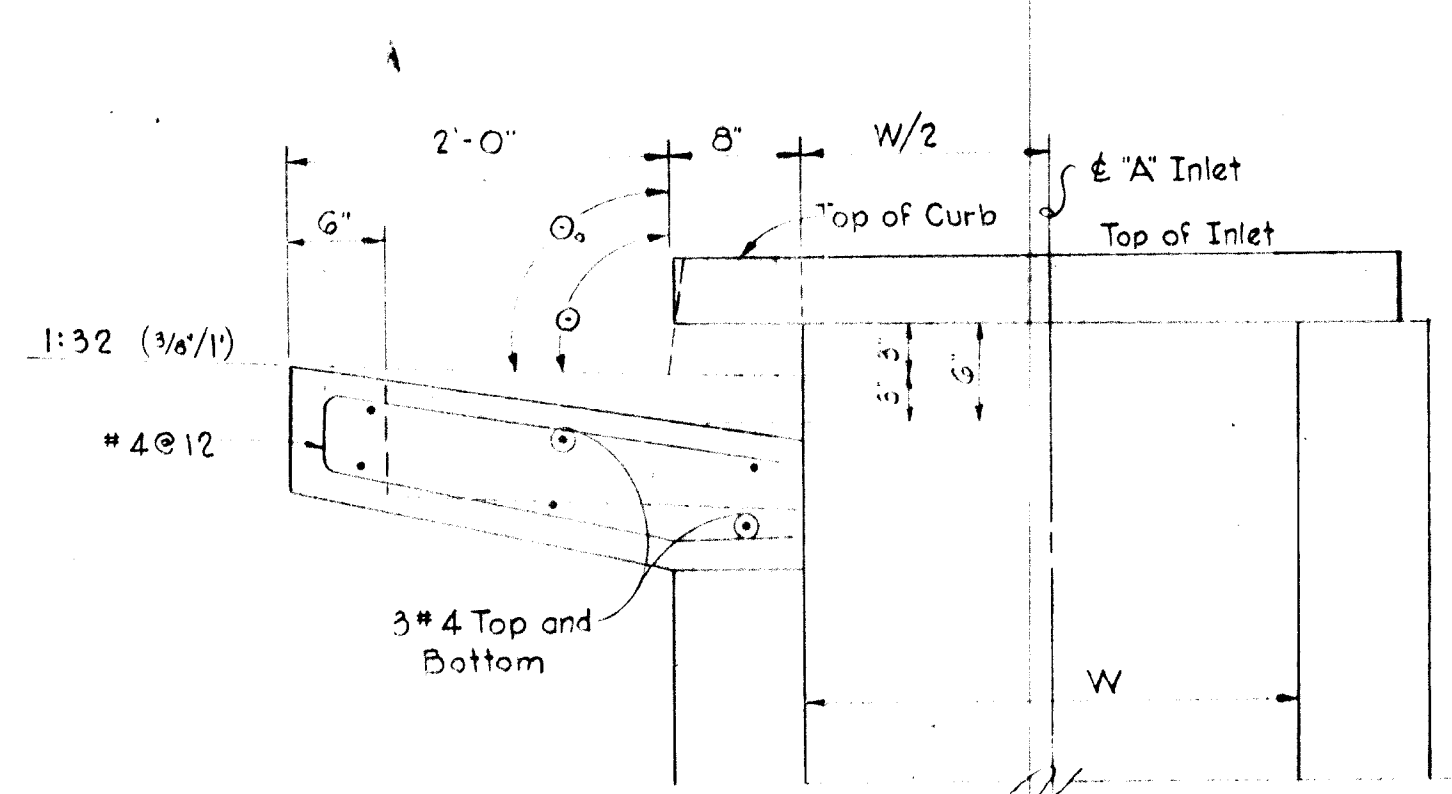


DEPARTMENT OF PUBLIC WORKS  
 P. H. Helms 6/16/72  
 CHIEF, BUREAU OF HIGHWAYS  
 OFFICE OF PLANNING AND ZONING  
 4/1/77  
 CHIEF, DIVISION OF LAND DEVELOPMENT AND TRANSPORTATION PLANNING

OWNER AND DEVELOPER  
 THE HOWARD RESEARCH & DEVELOPMENT CORPORATION  
 COLUMBIA, MARYLAND

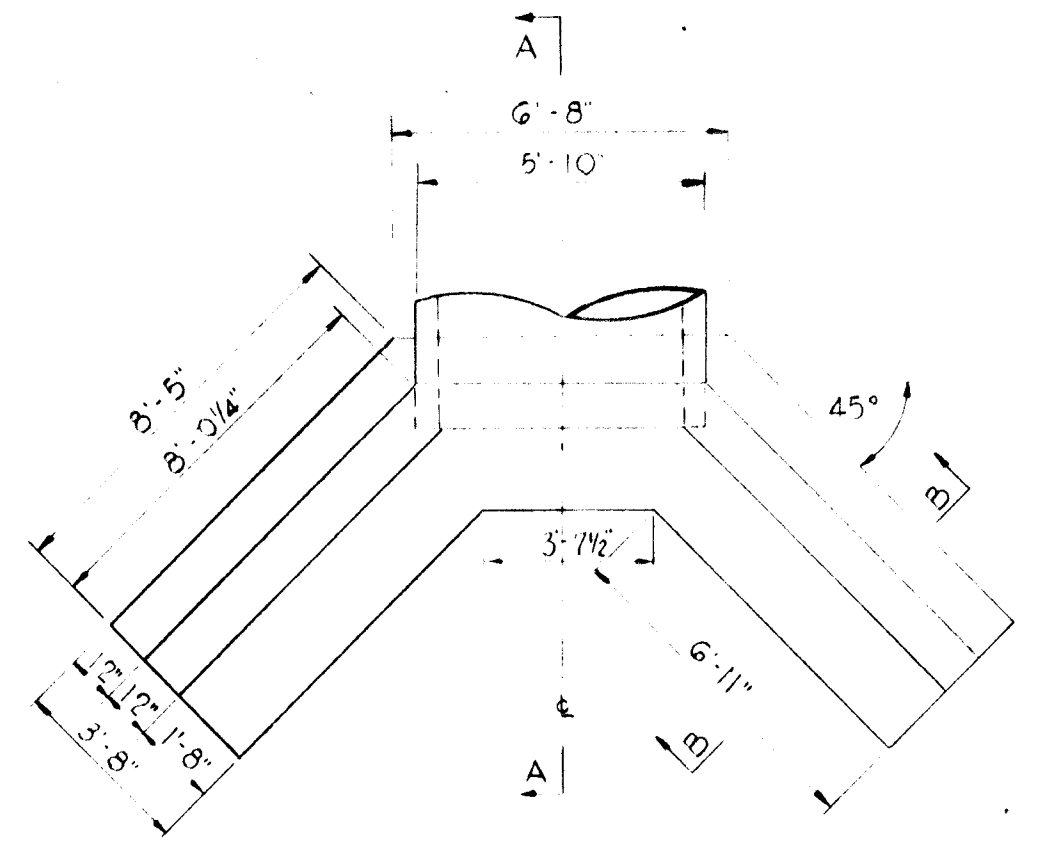
STORM DRAIN PROFILES  
 VILLAGE CENTER  
 REVISED: MARCH, 1977

DWG NO  
 SHT 4 OF 7  
 JOB NO  
 73107  
 DATE 4/25/77

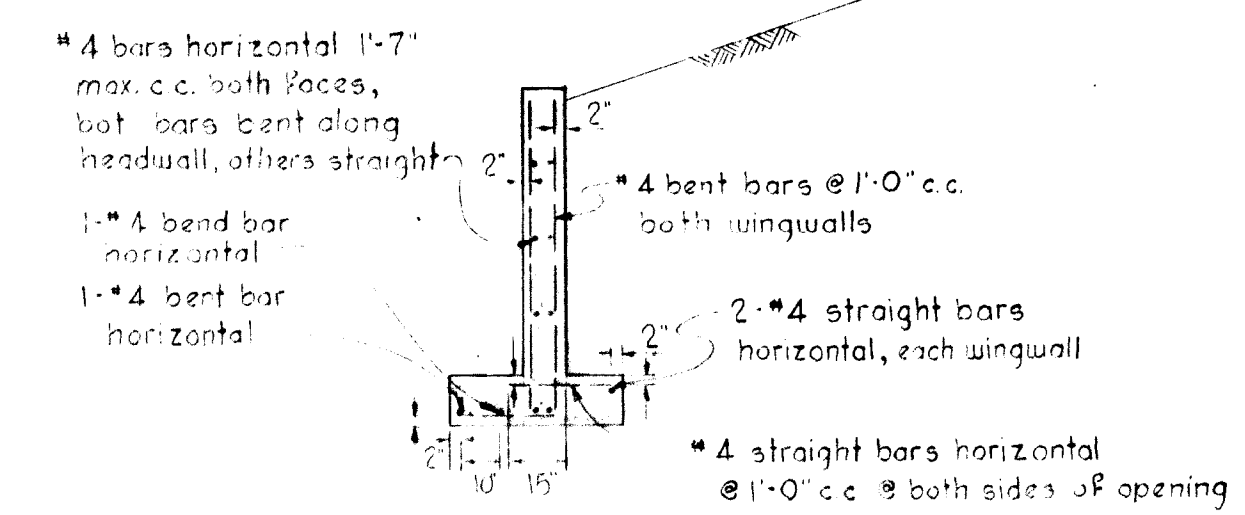


**STANDARD CURB TYPE "A" INLET**

No Scale

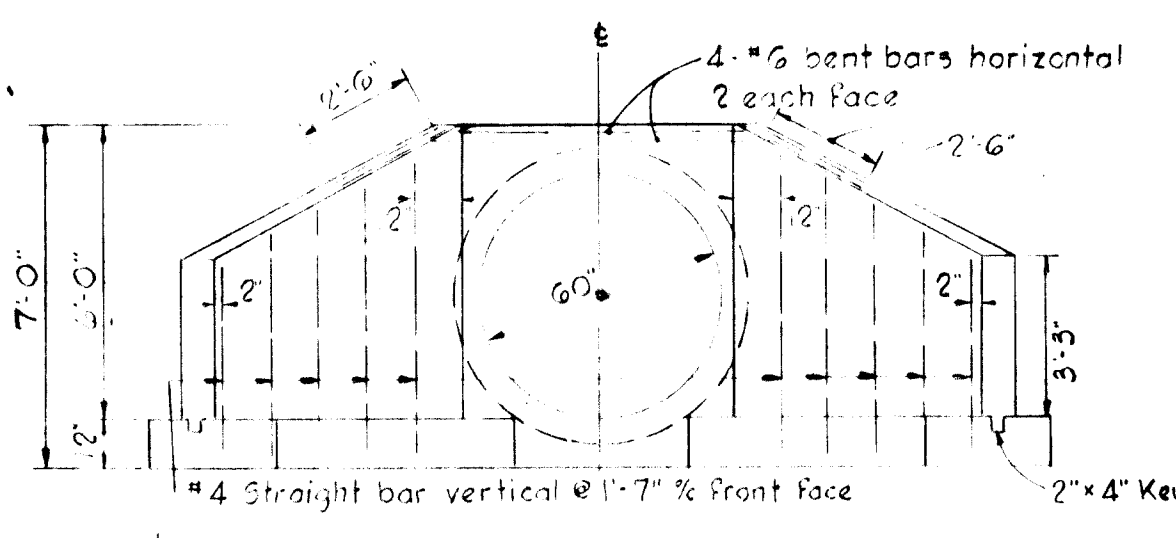


**PLAN**



**SECTION "B-B"**

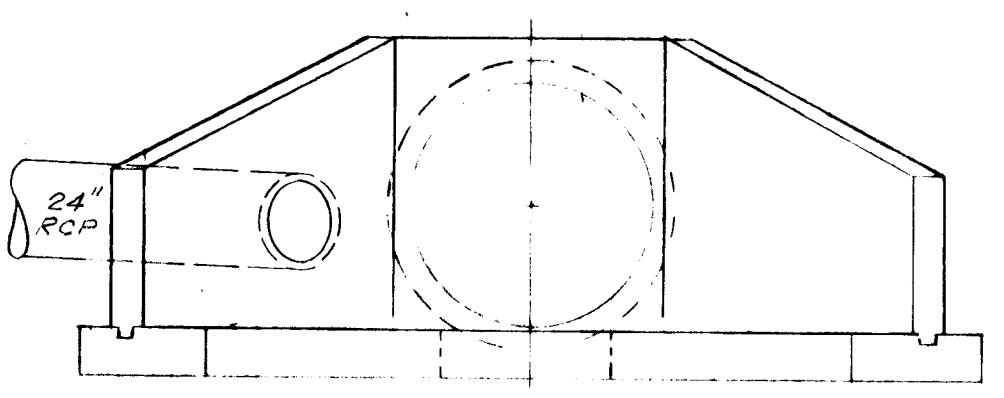
Note: Chamfer all exposed edges 1" or as directed



**FRONT ELEVATION**

**STANDARD B-60 HEADWALL**

Scale: 1/4" = 1'-0"



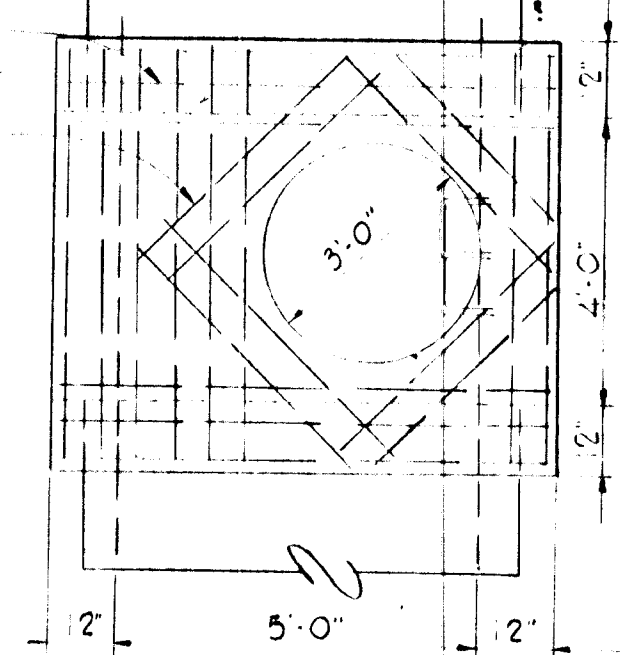
**FRONT ELEVATION**

**ENDWALL S-1 and EXIT CHANNEL**

Scale: 1/4" = 1'-0"

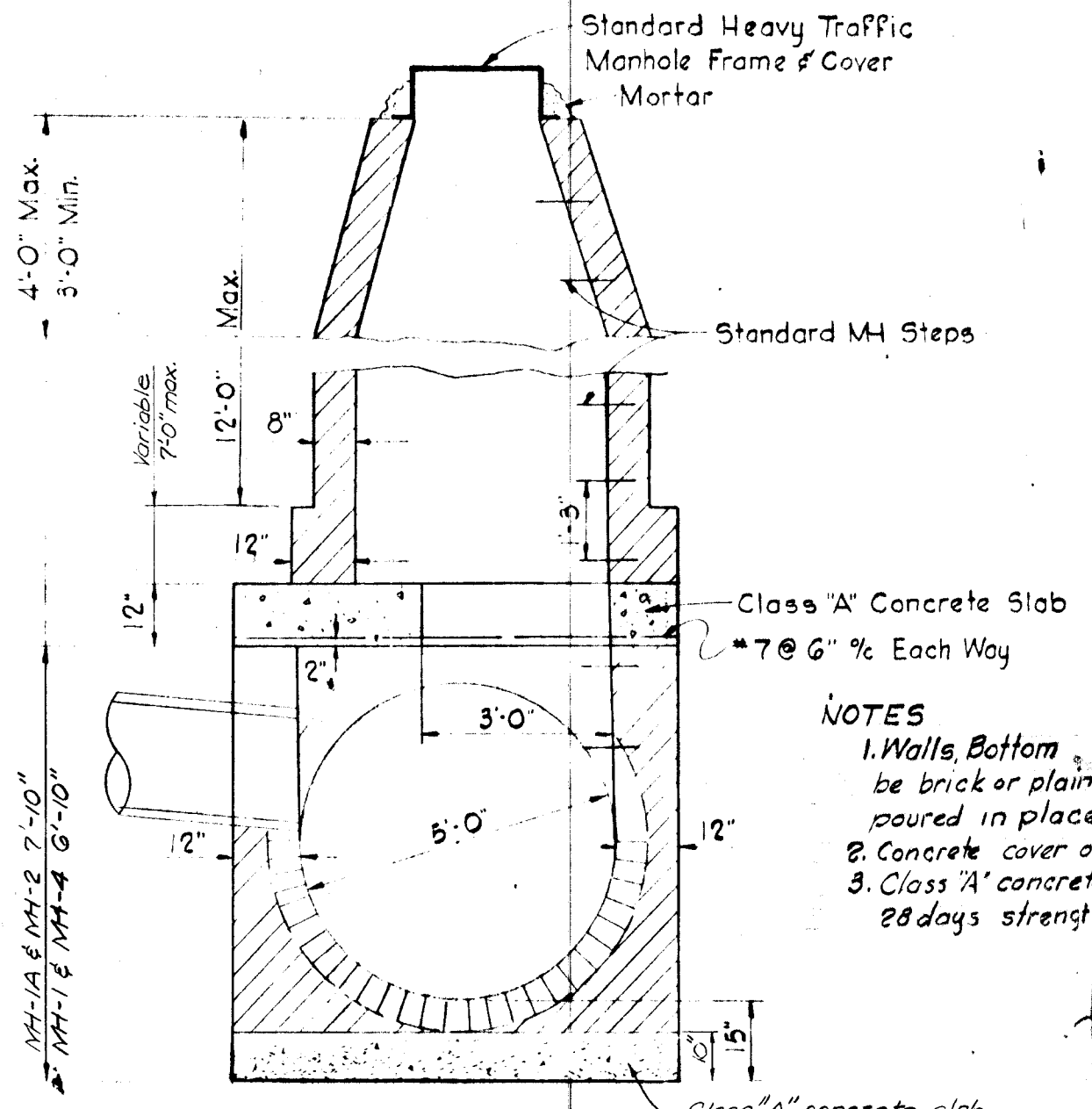


**SPECIAL TOP SLAB MANHOLE # 4**



**TOP SLAB**

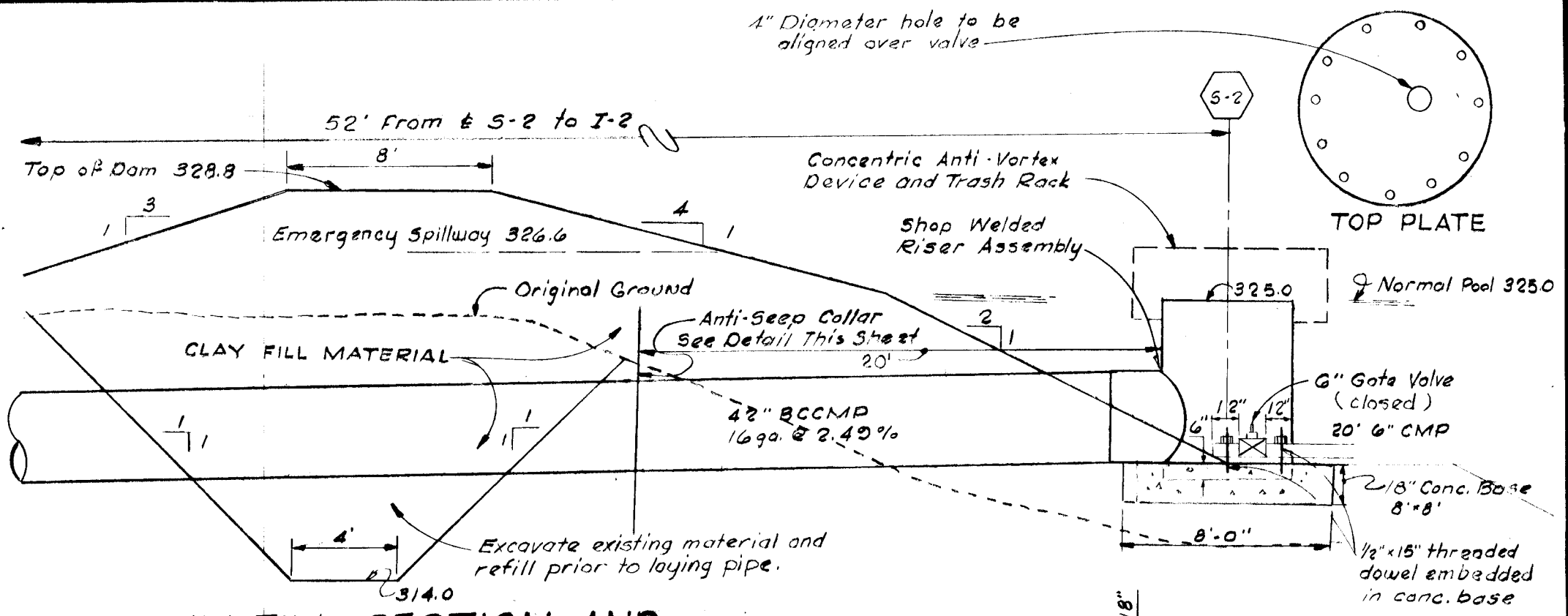
#7 @ 6" Each Way  
#7 Extra as Shown



**SPECIAL MANHOLE**

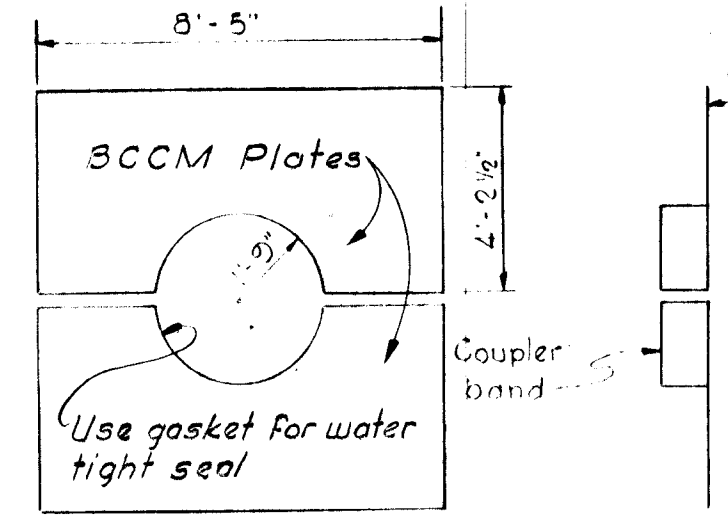
Scale: 3/8" = 1'-0"

NOTES  
1. Walls Bottom and invert shall be brick or plain class 'A' concrete poured in place.  
2. Concrete cover on reinforcing bar shall be 2" min.  
3. Class 'A' concrete shall have a min. 28 days strength of 3500 p.s.i.



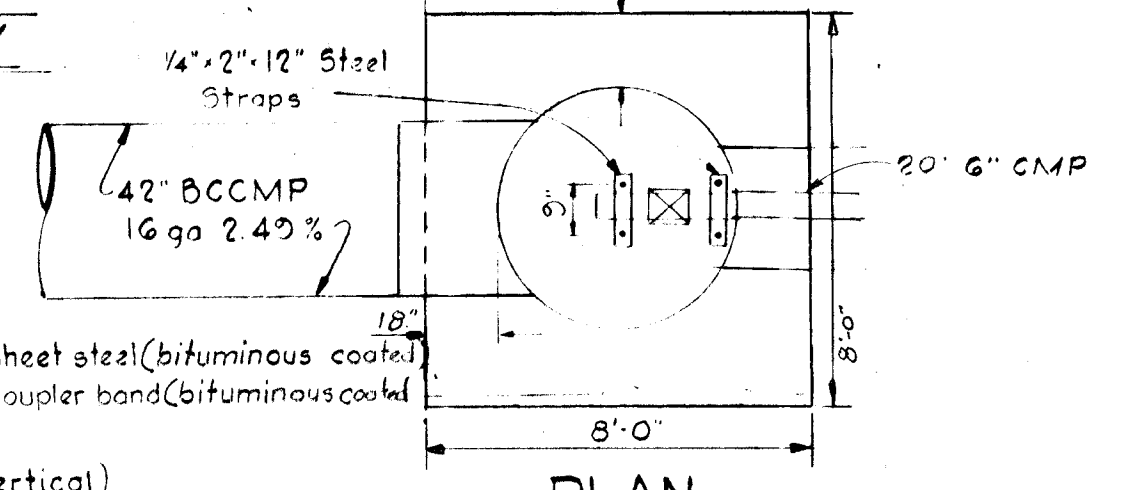
**CLAY FILL SECTION AND POND RISER ASSEMBLY**

Scale: 3/16" = 1'-0"



**ANTI-SEEP COLLAR FOR 42" BCCMP SEDIMENT BASIN & PERMANENT POND**

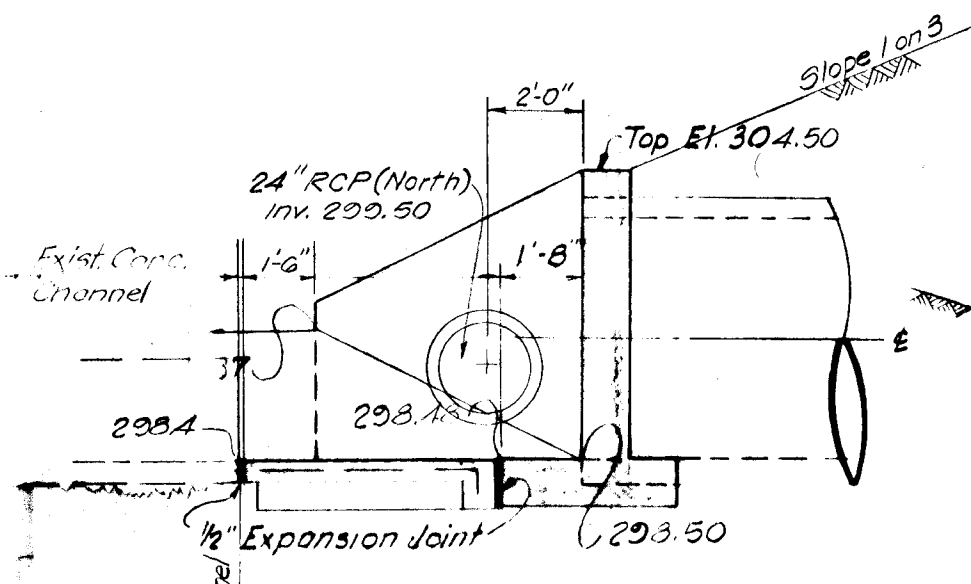
Scale: 1/4" = 1'-0"



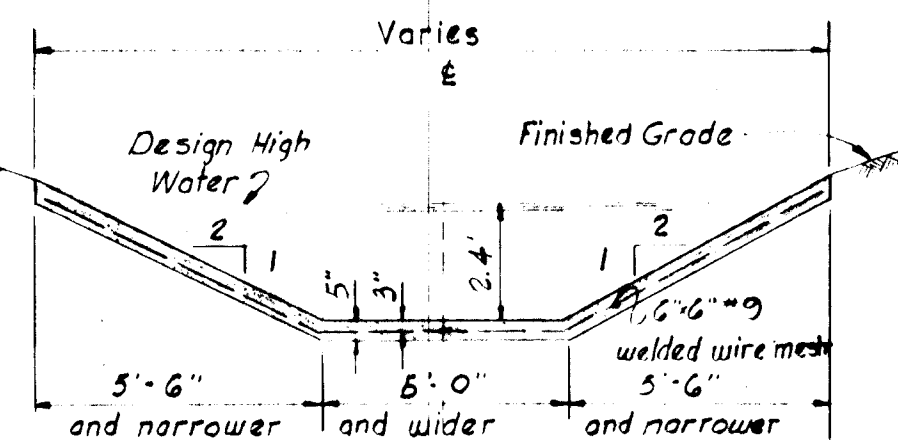
**S-2 POND RISER ASSEMBLY**

Scale: 1/4" = 1'-0"

Notes:  
1. S-1 has same bar placement and dimensions as S-3  
2. Chamfer all exposed edges 1" or as directed.



**SECTION "A-A"**



DESIGN TABLE		
Riser Diameter inches	"D" Inches	"H" Inches
18	27	8
21	30	11
24	36	13
27	42	15
36	54	17
42	60	19
48	72	21
54	78	25
60	90	29
6	10	3

1. Top Plate - To be 1/2" steel plate  
2. Outer Shell - To be of same gauge metal as the riser. May be formed sheet steel or corrugated steel.  
3. Attachment to riser - bolted as shown with bolts directly under the reinforcing rods as shown for maintenance reasons.  
4. Bolts - use 1/2" for riser up to 36" diameter; use 5/8" diameter for all larger riser diameters.  
5. Bituminous coat all surfaces after fabrication and attachment to the riser.

**CONCENTRIC ANTI-VORTEX DEVICE AND TRASH RACK FOR SEDIMENT BASIN AND PERMANENT POND**

No	Revisions	Date
1	Endwall S-1 & Exit Channel	12-22-76
2	Revised Anti-Seep Collar	11-15-74
3	Revised Pond Riser Assembly	11-15-74

**COLUMBIA**  
VILLAGE OF OWEN BROWN  
SECTION 1 AREAS  
HOWARD COUNTY, MARYLAND  
6th ELECTION DIST.

OWNER AND DEVELOPER  
THE HOWARD RESEARCH & DEVELOPMENT CORPORATION  
COLUMBIA, MARYLAND

STORM DRAIN AND PERMANENT POND DETAILS  
VILLAGE CENTER  
REVISED: MARCH, 1977

DWG NO SHT 5 OF 7  
JOB NO. 73107  
DATE 4/25/77

**stottler stagg & associates**  
affiliate  
**brevard engineering company**  
architects engineers planners

TEACHER 3 BUILDING  
COLUMBIA, MARYLAND

DEPARTMENT OF PUBLIC WORKS  
D. W. Ireland 6/16/77  
CHIEF BUREAU OF HIGHWAYS  
OFFICE OF PLANNING AND ZONING  
CHIEF DIVISION OF LAND DEVELOPMENT AND TRANSPORTATION PLANNING