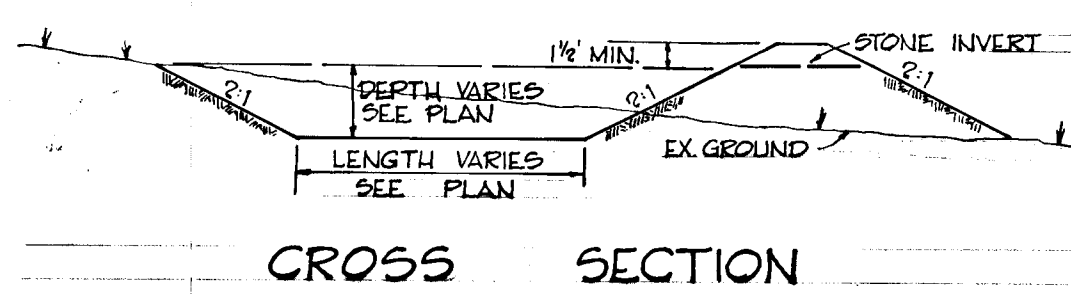


SEDIMENT CONTROL NOTES

1. IMMEDIATELY FOLLOWING THE START OF GRADING OPERATIONS SEDIMENT BASINS WITH ROCK BERMS WILL BE CONSTRUCTED IN LOCATION AS SHOWN ON PLAN. (STABILIZE IMMEDIATELY IN ACCORDANCE WITH NOTE 4)
2. DISTURBED AREAS ARE TO BE MAINTAINED IN A ROUGH GRADED CONDITION UNTIL PROPER WEATHER CONDITIONS EXIST FOR THE ESTABLISHMENT OF PERMANENT VEGETATIVE COVER.
3. NO SLOPES SHALL BE STEEPER THAN 1' VERTICAL ON 3' HORIZONTAL (3:1).
4. FINAL STABILIZATION WITH VEGETATIVE COVER WILL TAKE PLACE AS EARLY IN THE SPRING AS WEATHER CONDITIONS PERMIT. IT WILL BE DONE AS FOLLOWS:
  - A. APPLY GROUND AGRICULTURAL LIMESTONE AT ONE TON PER ACRE.
  - B. APPLY 10-10-10 FERTILIZER 1000 LBS. PER ACRE.
  - C. WORK BOTH INTO SOIL AND PREPARE SEEDED AREA WITH YORK RAKE.
  - D. SEEDING
    1. SEED FLAT AREAS WITH 20 LBS. KENTUCKY 31 TALL FESCUE PER ACRE AND 20 LBS. KOREAN LESPEDEZE (UNHULLED) PER ACRE.
    2. SEED ALL 3:1 SLOPES WITH 15 LBS. CROWN FETCH (INNOCULATED) PER ACRE AND 40 LBS. KENTUCKY 31 TALL FESCUE PER ACRE.
  - E. MULCHING
    1. UNWEATHERED SMALL GRAIN STRAW WILL BE APPLIED AT 1 1/2 - 2 TONS PER ACRE. MULCH WILL BE TIED DOWN WITH ASPHALT.
5. ALL SEDIMENT CONTROL STRUCTURES ARE TO REMAIN IN PLACE AND MAINTAINED IN EFFECTIVE CONDITION UNTIL PERMISSION FOR THEIR REMOVAL HAS BEEN OBTAINED FROM THE HOWARD SOIL CONSERVATION DISTRICT. (465-3180 OR 465-5000 EXT. 291)
6. A MINIMUM 24-HOUR NOTICE MUST BE GIVEN TO THE HOWARD CONSERVATION DISTRICT (465-3180) PRIOR TO THE START OF ANY WORK.
7. SILT TRAPS WILL BE CLEANED OUT WHENEVER SILT REACHES A DEPTH EQUAL TO THE ORIGINAL GROUND AT THE STONE.
8. ALL SWALES SHALL BE SODDED AND TAMPED, AND ALL SLOPES SHALL BE SEEDED OR SODDED IN CONJUNCTION WITH HOWARD COUNTY SOIL CONSERVATION DISTRICT AND THE HOWARD COUNTY PLANNING BOARD STANDARDS ENTITLED "STANDARD AND SPECIFICATIONS FOR SOIL EROSION AND SEDIMENT CONTROL IN URBANIZING AREAS."

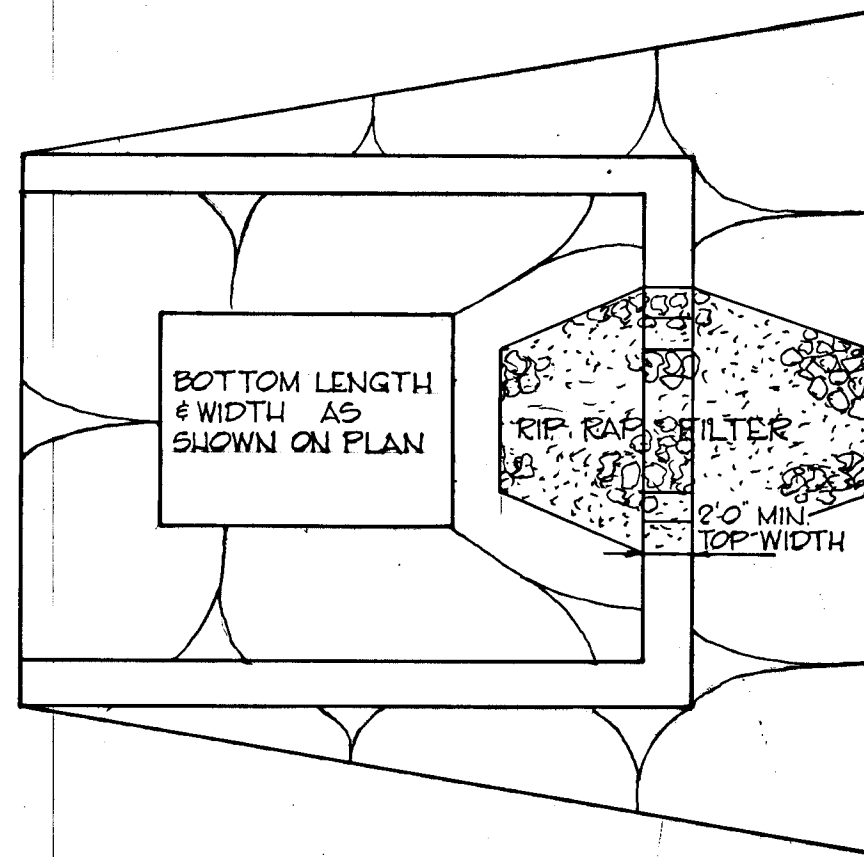


DRAINAGE AREA = 4.2 AC.  
DISTURBED AREA = 2.2 AC.  
DESIGN VOLUME = 220 CU. YDS.  
LENGTH = 50'  
WIDTH = 40'  
DEPTH = 4.0'  
STONE WIDTH = 20'

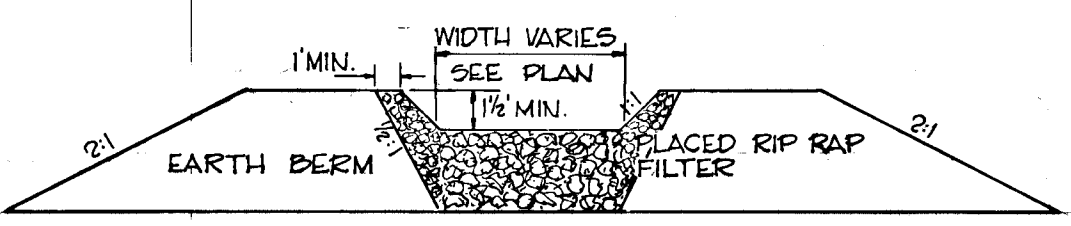
DRAINAGE AREA = 2.2 AC.  
DISTURBED AREA = 2.2 AC.  
DESIGN VOLUME = 127 CU. YDS.  
LENGTH = 25'  
WIDTH = 20'  
DEPTH = 3.0'  
STONE WIDTH = 15'

DRAINAGE AREA = 2.7 AC.  
DISTURBED AREA = 2.7 AC.  
DESIGN VOLUME = 121 CU. YDS.  
LENGTH = 45'  
WIDTH = 20'  
DEPTH = 4.0'  
STONE WIDTH = 15'

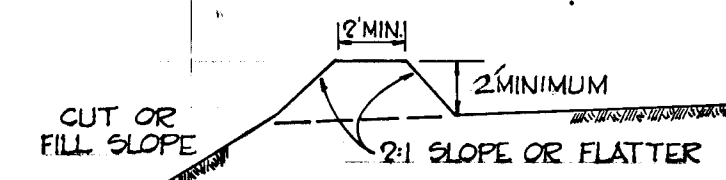
CROSS SECTION



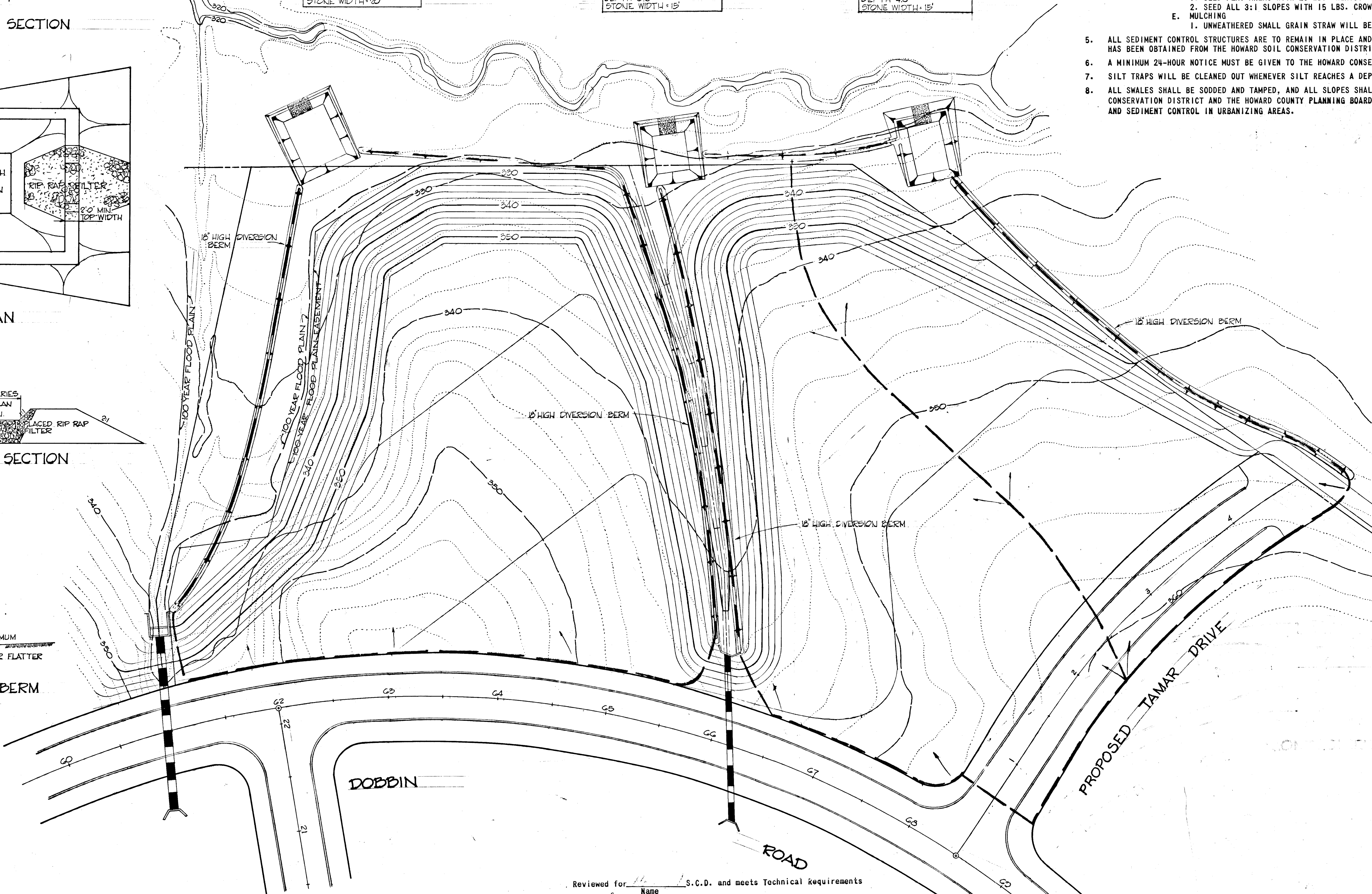
PLAN



FILTER SECTION



DIVERSION BERM

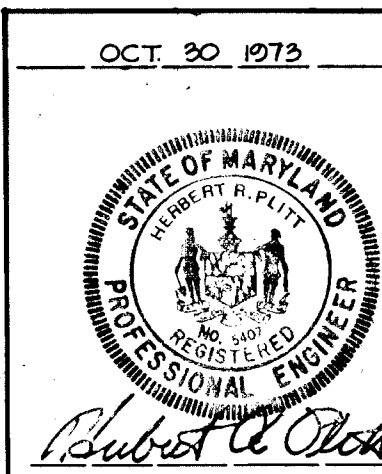


DEPARTMENT OF PUBLIC WORKS  
*John M. ...* 5/31/74  
 Chief, Bureau of Highway Date

ENGINEER'S CERTIFICATE  
 I certify that this plan for Erosion and Sediment Control represents a practical and workable plan based on my personal knowledge of the site conditions and that it was prepared in accordance with the requirements of the Howard Soil Conservation District  
*Robert W. ...*  
 Signature of Engineer  
 OCT. 30 1973 Date

DEVELOPER CERTIFICATE  
 I hereby certify that all development and/or construction will be done according to this plan of development and plan for Erosion and Sediment Control, and I also authorize periodic on-site inspection by the Howard Soil Conservation District or their authorized agents, as are deemed necessary.  
 Deviation from this plan will not be made unless authorized by the Howard Soil Conservation District.  
*[Signature]*  
 Signature of Developer  
 10/27/73 Date

Reviewed for 1 S.C.D. and meets Technical Requirements  
 Name  
*[Signature]*  
 Signature  
 U.S. Soil Conservation Service  
 This Development Plan is approved for Soil Erosion and Sediment Control by the Howard Soil Conservation District.  
*[Signature]*  
 Approved  
 Howard S.C.D.  
 Date 5-31-74  
 Date RWZ 5-31-74



GREEN ASSOCIATES, INC.  
 CONSULTING ENGINEERS  
 TOWSON, MARYLAND

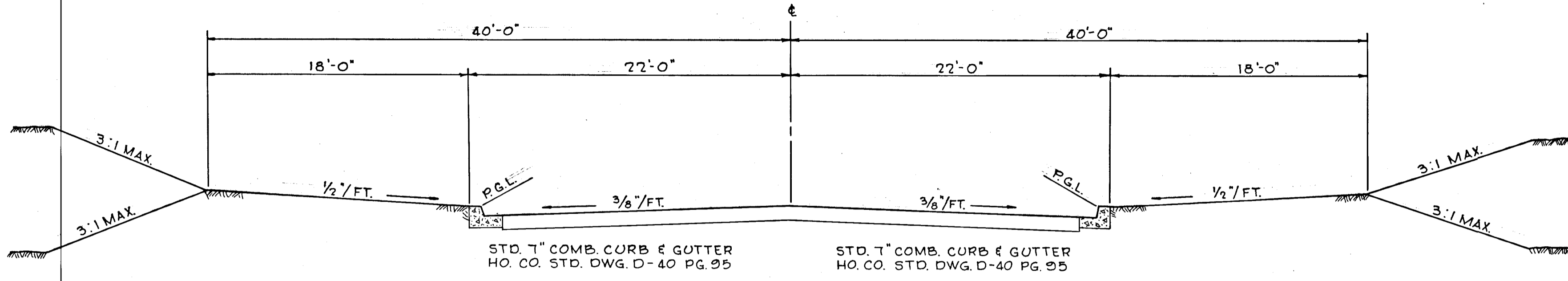
---

COLUMBIA  
 MARYLAND  
 ELECTION DISTRICT HOWARD COUNTY  
 HOWARD RESEARCH AND DEVELOPMENT CORP.

PROJECT # COLUMBIA AUTO PARK PARCEL I  
 PROJECT TITLE GRADING PLAN & SEDIMENT CONTROL PLAN  
 H.R.D. Scale 1"=50'  
 R.M. Date OCT 30, 1973

80-74-22  
 F-74-73

STRUCTURE SCHEDULE						
NO.	TYPE	LOCATION	INV. IN	INV. OUT	T.C.P. ELEV.	REMARKS
I-1	'A-10' INLET	STA. 4+00 - 22' LT.	351.58	352.00	-355.90	HO. CO. DWG. D-99 PG. 154
I-2	'A-10' INLET	STA. 4+00 - 22' RT.	351.58	351.38	-355.90	HO. CO. DWG. D-99 PG. 154
S-1	CONCRETE END SECTION	STA. 4+75 - 18' RT.		348.72		M.S.H.A. ST'D. NO. 368.01



**80' R.O.W. TYPICAL SECTION**  
SCALE: 1"=6'-0"

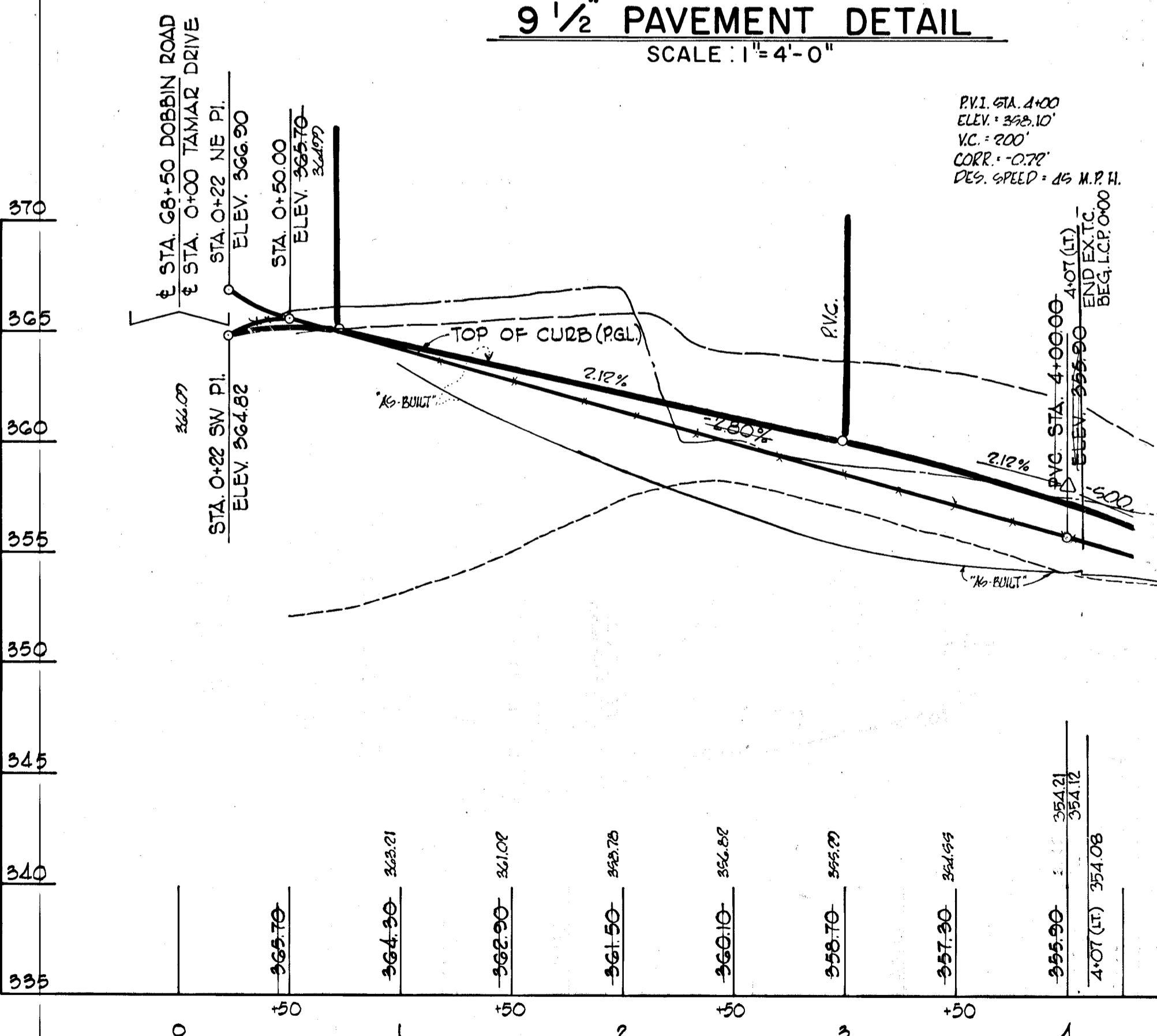
SECTION	THICKNESS	PHASE
TACK COAT SECTION C-31-4	1 1/2"	BAUD C-3 FINAL PHASE
PRIME COAT SECTION	3"	BAUD C-2
	5"	FIRST PHASE
	5"	BAUD C-2 OR G-3

CLEARING AND GRADING  
SUBGRADE  
BASE COURSE  
BINDER COURSE  
SURFACE COURSE

ARTICLE C-1  
ARTICLE C-2  
ARTICLE C-31 OR C-33  
ARTICLE C-31  
ARTICLE C-31

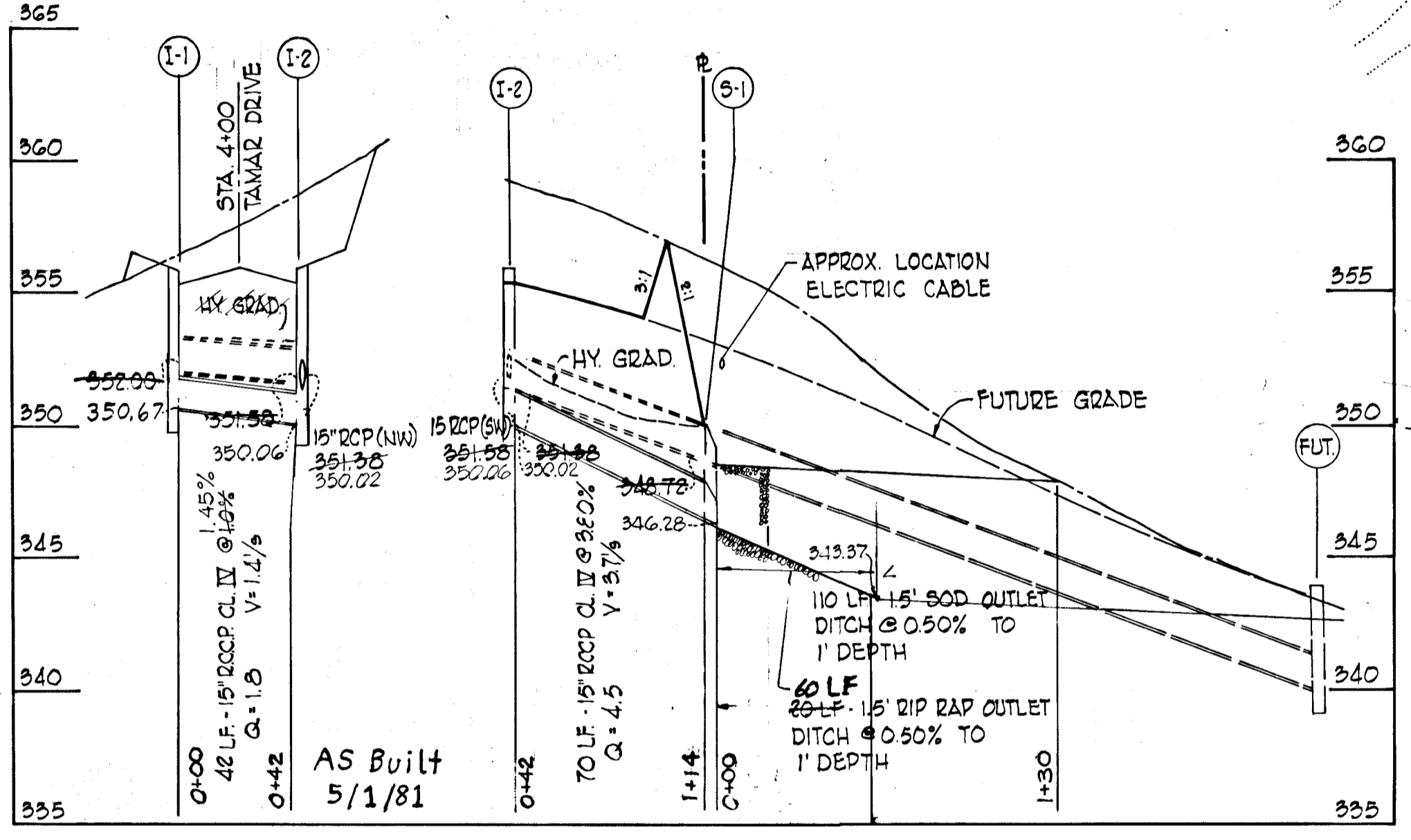
NOTE:  
PAVEMENT TO BE CONSTRUCTED IN ACCORDANCE WITH THE HOWARD COUNTY ROAD CONSTRUCTION CODE AND SPECIFICATIONS DWG. D-12 PG. G7

**9 1/2" PAVEMENT DETAIL**  
SCALE: 1"=4'-0"

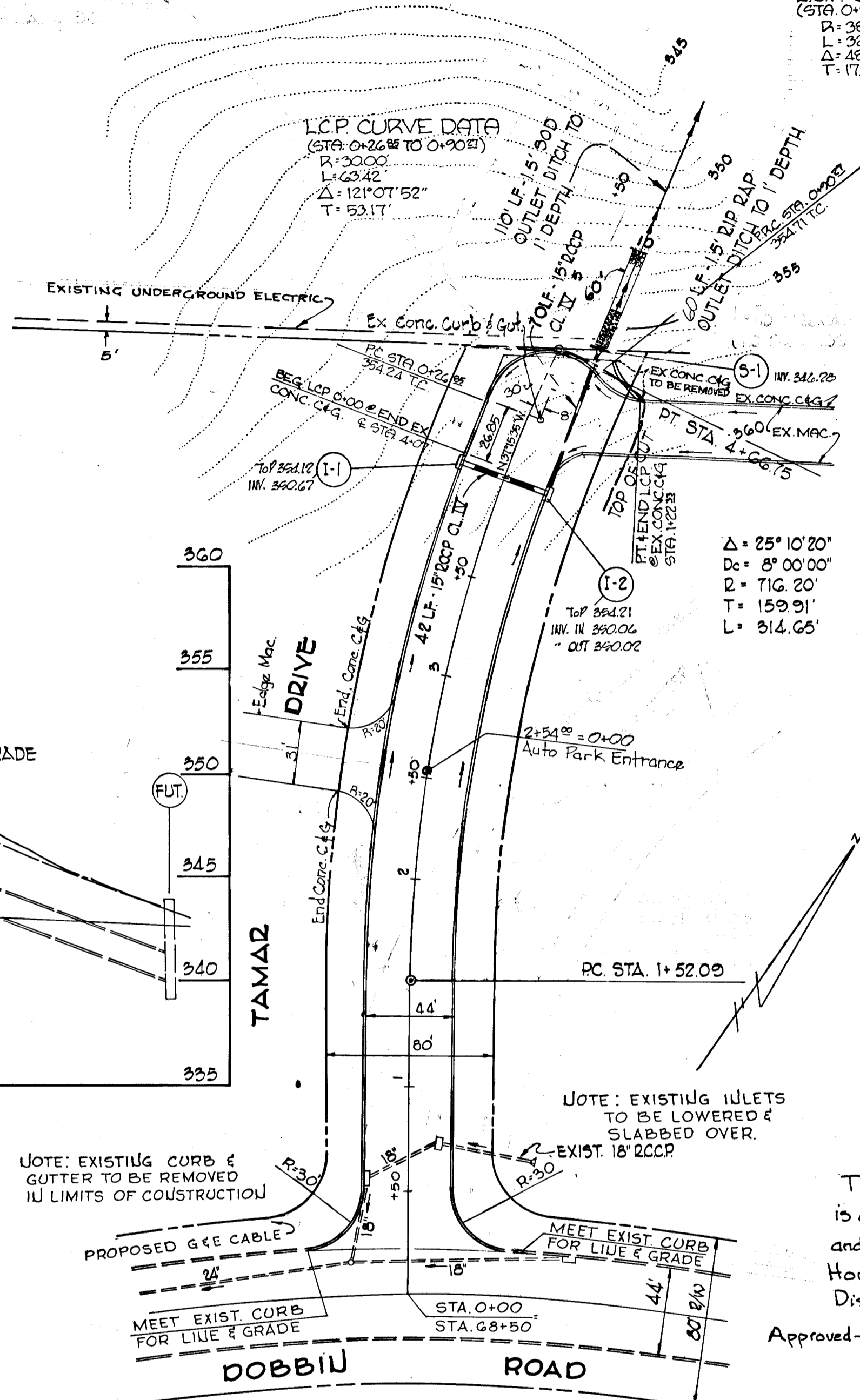


**LINEAR CURB PROFILE**  
AS BUILT 5-1-81

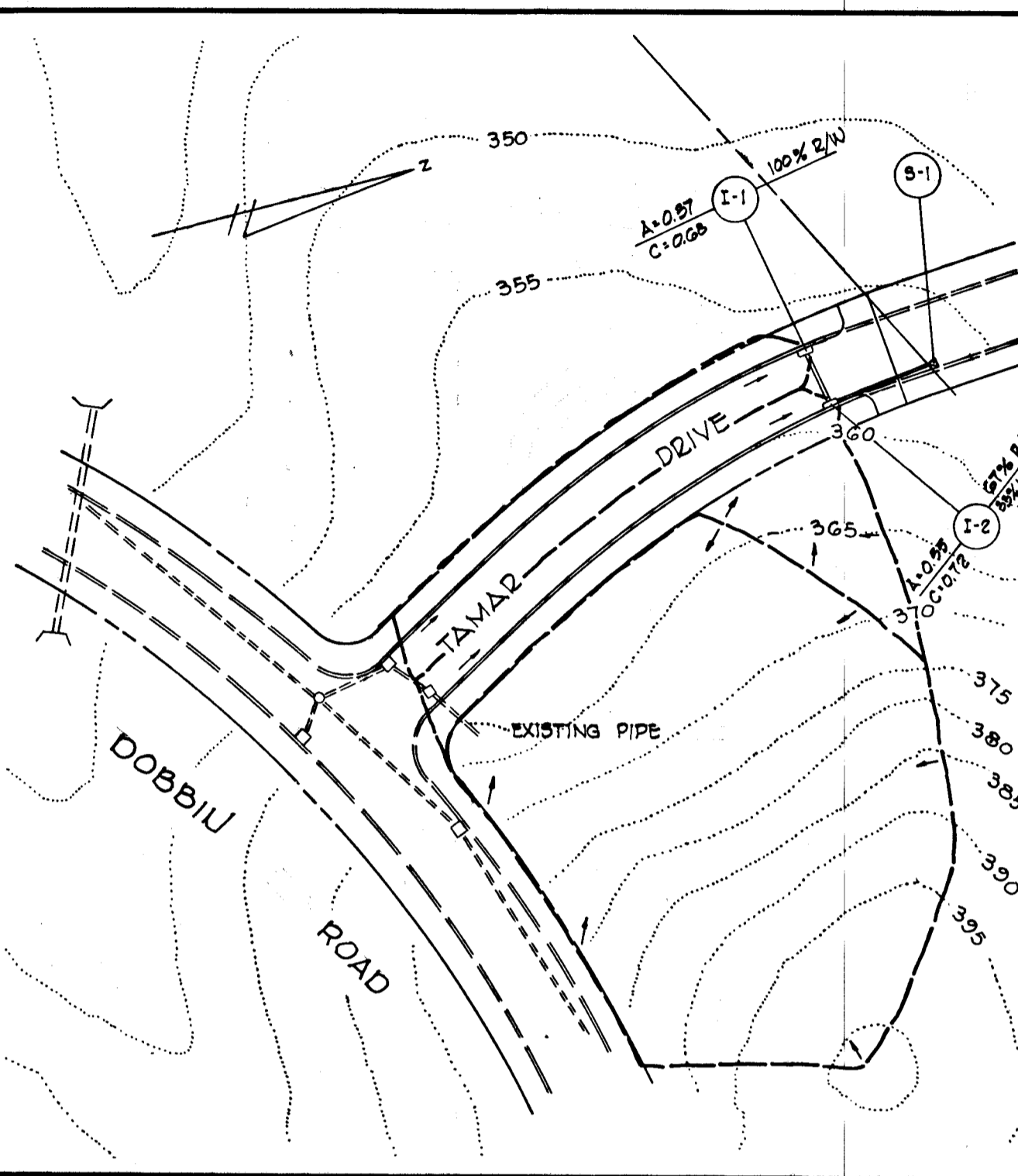
**PROFILE**  
SCALE: HOR. 1"=50'  
VERT. 1"=5'



**PROFILE**  
SCALE: HOR. 1"=50'  
VERT. 1"=5'



**PLAN**  
SCALE: 1"=50'



**DRAINAGE AREA MAP**  
SCALE: 1"=100'

Reviewed for Howard Soil Conservation District and meets Technical Requirements  
*James M. Deha*  
Signature  
U.S. Soil Conservation District  
F-74-73  
Date 5/31-74

This development plan is approved for Soil Erosion and Sediment Control by the Howard Soil Conservation District.  
Approved: *Robert W. John*  
Howard Soil Conservation District  
Date 5/30/74  
*J.H. Clawson*  
p

DEPARTMENT OF PUBLIC WORKS	
<i>S. H. McLeod</i>	5/31/74
CHIEF, BUREAU OF HIGHWAY	DATE
OFFICE OF PLANNING AND ZONING	
<i>J.H. Clawson</i>	5/31/74
CHIEF, DIVISION OF LAND DEVELOPMENT AND TRANSPORTATION PLANNING	DATE

GREEN ASSOCIATES, INC.	
CONSULTING ENGINEERS	
TOWSON, MARYLAND	
1/23/81	1 ADD CUL-DE-SAC
COLUMBIA	
6 <sup>TH</sup> ELECTION DISTRICT HOWARD COUNTY	
HOWARD RESEARCH AND DEVELOPMENT CORP.	
COLUMBIA, MARYLAND	
PROJECT AREA	
COLUMBIA AUTO PARK SECTION 1 AREA 1	
TAMAR DRIVE PLAN, PROFILE AND TYPICAL	
By: K.A.L.	AS SHOWN
By: D.A.C.	5-28-74
By: J.T.J.	



Original "As-Built" paper print signed by Walter Park - with seal.