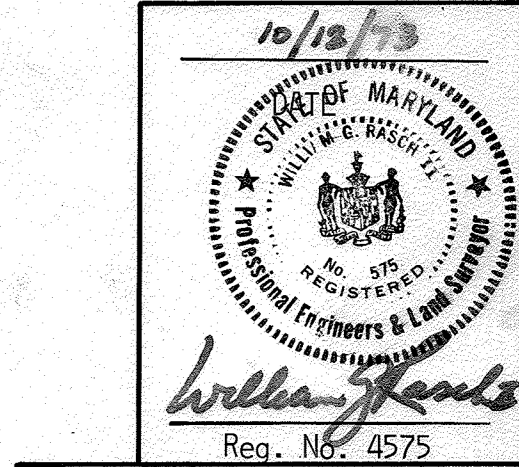
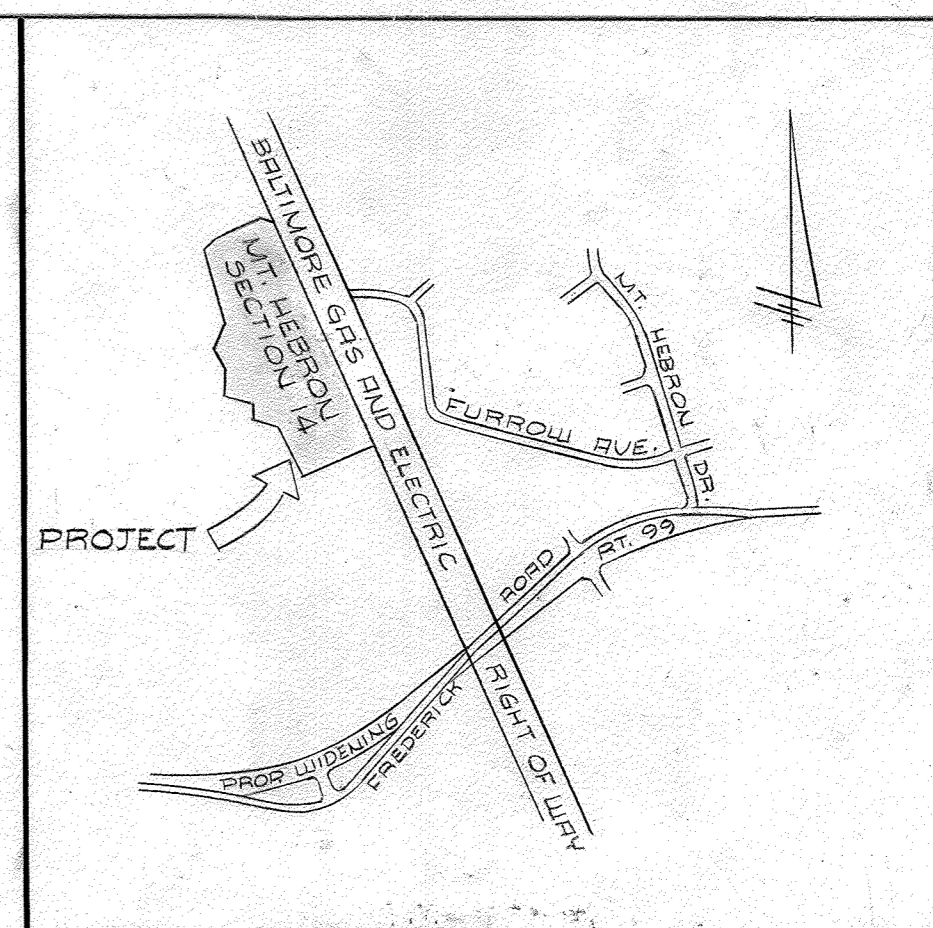
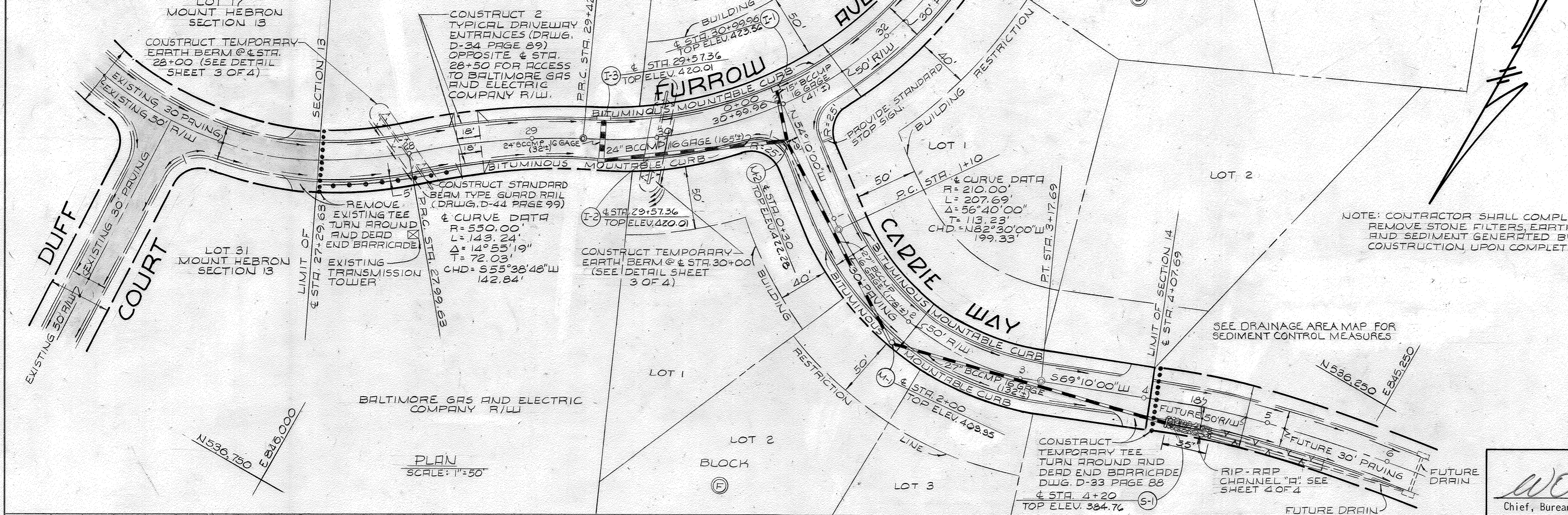


PLAN REVISION NOTE: ON OR AROUND 11/1/2012 CAPITAL PROJECT 04176 ENTITLED ASPHALT DRIVE STREAM RESTORATION PROJECT WAS CREATED TO STABILIZE APPROXIMATELY 173 LINEAR FEET ALONG AN UNNAMED TRIBUTARY TO THE PATAPSCO RIVER, REPLACE AN EXISTING 36" INCH C&P AND REPAIR AN EXISTING POND EMERGENCY SPILLWAY ILLUSTRATED WITHIN THE LIMITS OF THIS SITE PLAN. AN ALTERNATE COMPLIANCE WAS PROCESSED THROUGH THE DEPARTMENT OF PLANNING AND ZONING UNDER WP-22-112, APPROVED ON 01/9/2022, TO WAIVER SECTIONS 10.116(a)(2), 10.1201(v), 10.1205(a)(3), AND 10.155(a)(1) OF THE SUBDIVISION AND LAND DEVELOPMENT REGULATIONS SUBJECT TO THE APPROVAL CONDITIONS. FOR THE DETAILED CONDITIONS OF APPROVAL AND THE CURRENT SITE CONDITIONS WITHIN THE DISTURBED AREA, PLEASE SEE THE CAPITAL PROJECT PLANS.

DATE	
BY	
REVISIONS	
NO.	
PLAN	
NOTE BOOK	
NO.	



DESIGNED BY: C.J. CROVO  
 DRAFTED BY: A.R. ZIERDEN  
 CHECKED BY: R.B. CARTER

PURDUM & JESCHKE  
 CONSULTING ENGINEERS AND  
 LAND SURVEYORS  
 1023 N. CALVERT STREET  
 BALTIMORE, MARYLAND 21202

OWNER AND DEVELOPER  
 MOUNT HEBRON, INC.  
 2417 MOUNT HEBRON DRIVE  
 ELLICOTT CITY, MARYLAND 21043

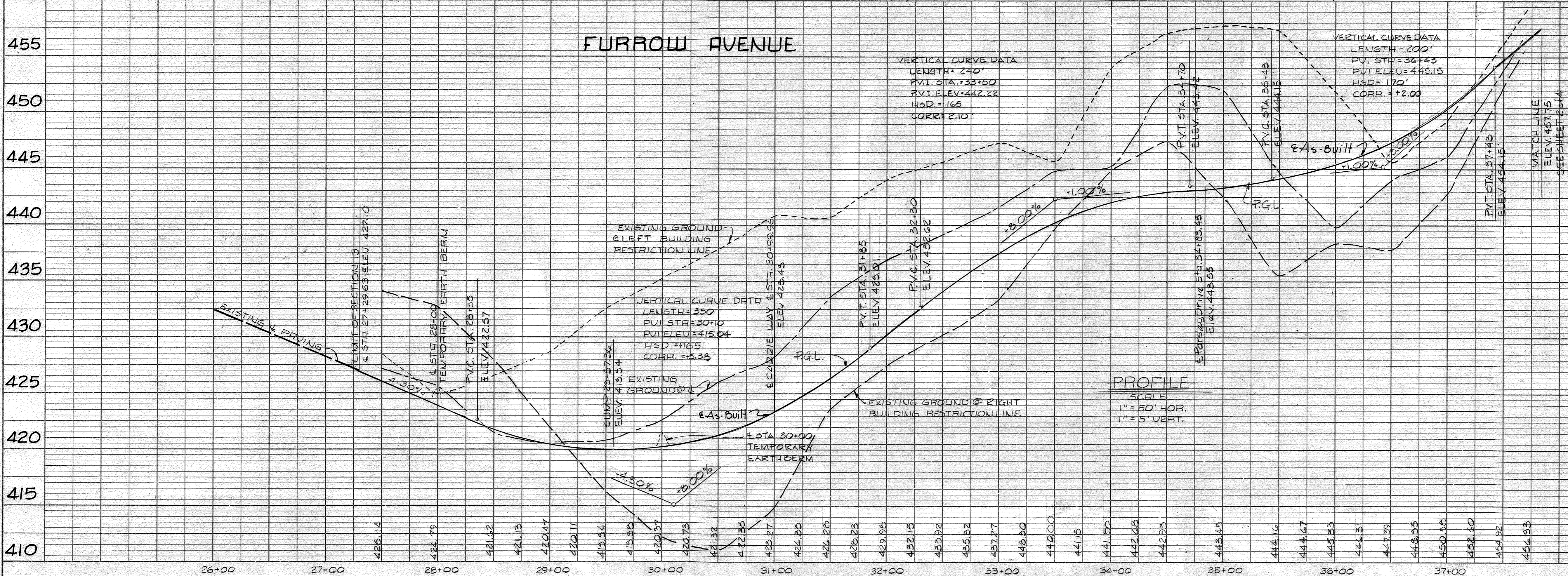
PLAN AND PROFILE  
 FURROW AVENUE

# MT HEBRON

2ND ELECTION DISTRICT SECTION 14 HOWARD COUNTY, MARYLAND  
 OCTOBER 5, 1973 SHEET 1 OF 4 SCALE: AS SHOWN

*W. O. Lillard* 4-26-74 Chief, Bureau of Highways Date  
*J. H. Clauson* 3/18/74 Chief, Division of Land Development and Transportation Planning Date

DATE	
BY	
REVISIONS	
NO.	
PROFILE	
NOTE BOOK	
NO.	



APPROVED  
 DIVISION OF LAND DEVELOPMENT  
 AND TRANSPORTATION PLANNING  
 HOWARD COUNTY, MARYLAND  
 DATE 1/14/74







**DEVELOPER'S CERTIFICATE**

I certify that all development and/or construction will be done according to this plan of development and plan for Erosion and Sediment Control, and I also authorize periodic on-site inspection by the Howard Soil Conservation District or their authorized agents, as are deemed necessary. Deviation from this plan will not be made unless authorized by the Howard Soil Conservation District.

*H. J. Jones* 10/11/73  
Date

**ENGINEER'S CERTIFICATE**

I certify that this plan for Erosion and Sediment Control represents a practical and workable plan based on my personal knowledge of the site conditions and that it was prepared in accordance with the requirements of the Howard Soil Conservation District.

*Arthur Glands* 10/12/73  
Signature of Engineer Date

Reviewed for Howard County Soil Conservation District and meets Technical Requirements.

U.S. Soil Conservation Service Date  
This development plan is approved for Soil Erosion and Sediment Control by the Howard Soil Conservation District.

APPROVED: District Coordinator Date  
Howard Soil Conservation District

**GENERAL NOTES**

- All construction shown hereon shall be in accordance with the Howard County Road Construction Code and Standard Specifications dated November 27, 1962 and revised August 1967.
- Reference to page and drawing numbers shown hereon are referred to the above mentioned Road Construction Code and Standard Specifications.
- Design Speed - 25 mph.

**BENCH MARKS**

Bench Mark "N" Elev. 404.19  
R.R. spike in 12" Maple 38.86' N.W. of C5-1

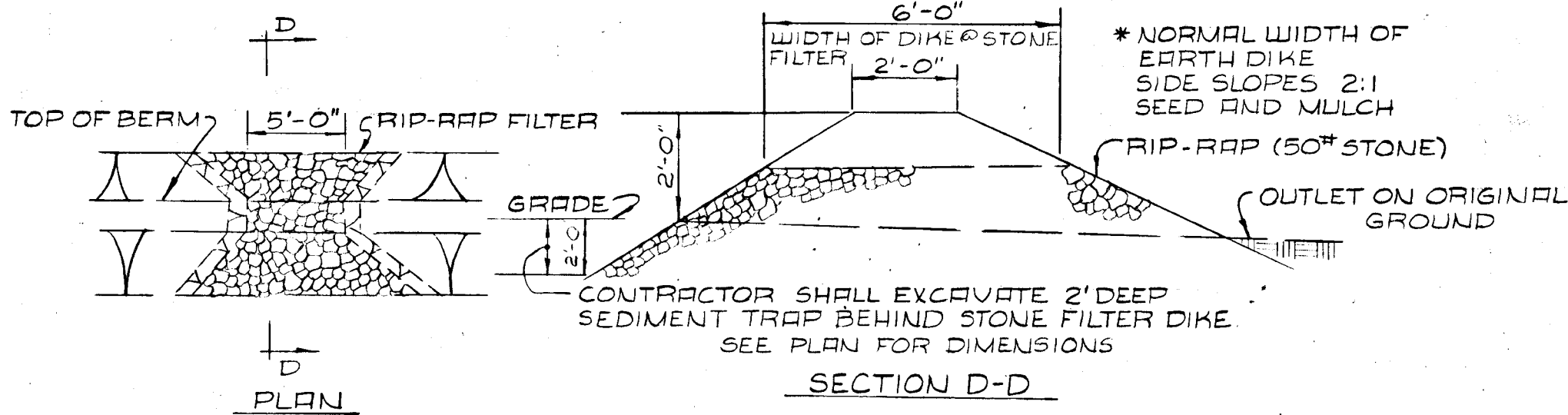
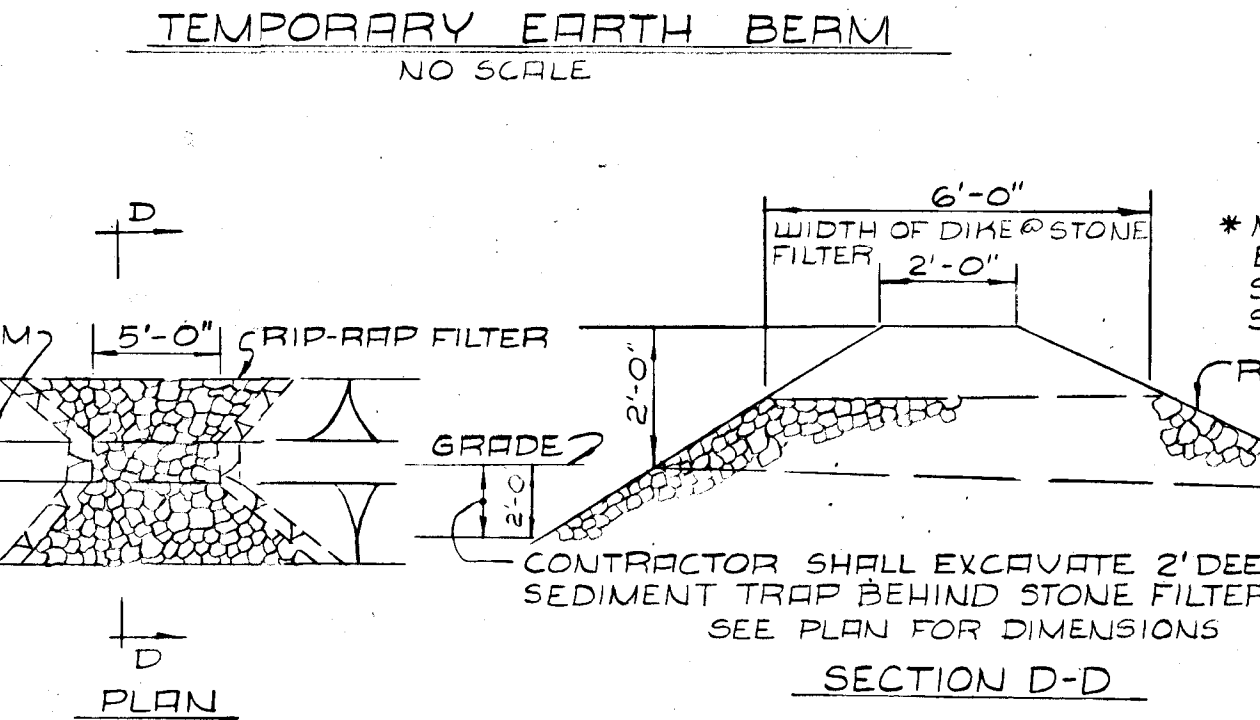
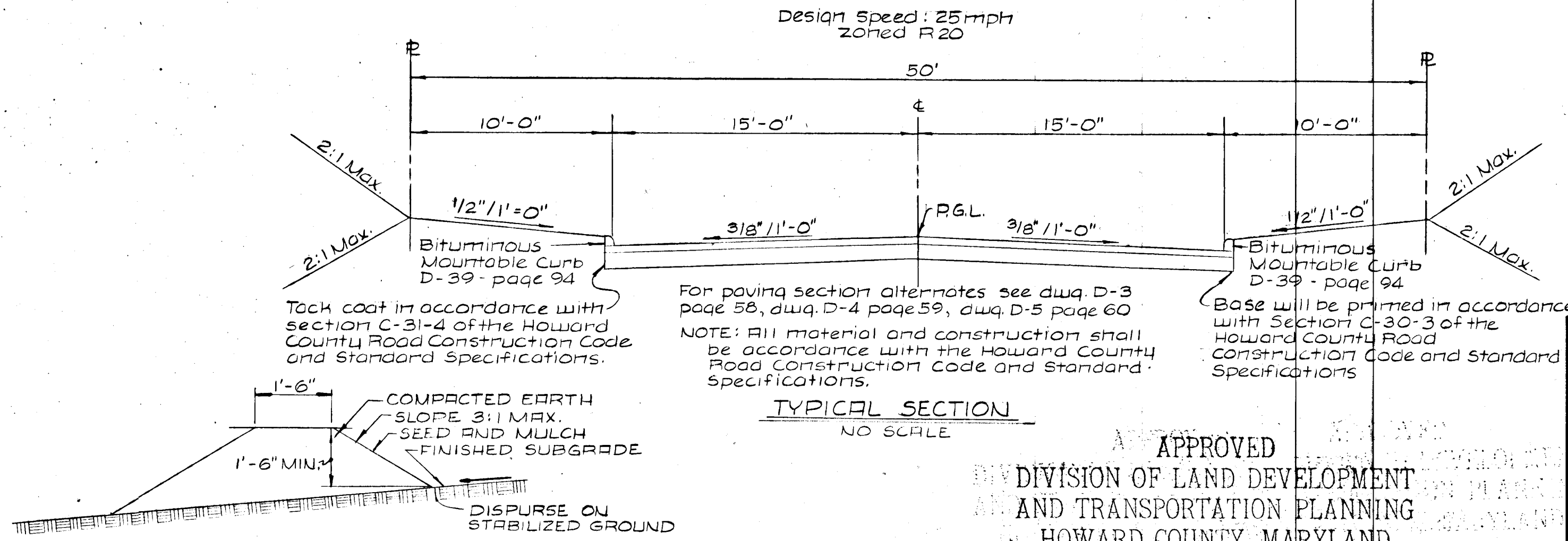
Bench Mark "O" Elev. 433.19  
S.E. Anchor Bolt 18'E. of C5-3

**SEDIMENT CONTROL NOTES**

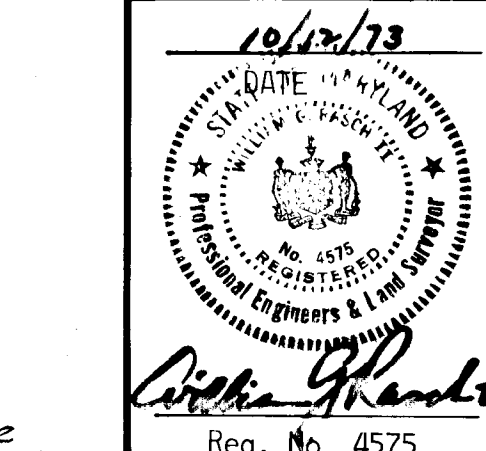
- The developer shall notify the Howard County Soil Conservation District at least 24 hours prior to beginning any construction shown hereon (465-3180).
- Berms, sediment traps, etc., to be constructed prior to any onsite grading or disturbance to any existing surface material, and are to be stabilized as soon after construction as possible.
- All sediment control structures to remain in place until permission for their removal has been obtained from the Howard Soil Conservation District. (465-3180 or 465-5000 Ext. 291).
- All graded areas not to be sodded shall be stabilized by seeding and mulching in accordance with the following:
  - Site preparation:
    - Harrow or disc in areas proposed to be seeded the following materials at the specified rate, to a depth of 3":
      - Pulverized limestone at 1 1/2 tons/acre.
      - Commercial fertilizer 5-10-10 at 3/4 tons/acre.
      - Super phosphate at 600 lbs/acre.
  - Seeding:
    - Sow the following seed mixture at the rate of 200 lbs/acre with a mechanical spreader.
      - 20% Annual Rye Grass
      - 80% Kentucky 31 Fescue
    - The seeded area shall then be raked with a York Rake (minimum of 2 passes), covered and compacted with Cultipacker or other approved method.
  - Mulching:
    - Seeded areas shall be uniformly mulched immediately after seeding with unweathered small grain straw at the rate of 1 1/2 to 2 tons/acre.
    - Tie mulch down with liquid asphalt at 0.1 gal/s.y. or emulsified asphalt at 0.04 gal/s.y.

**STRUCTURE SCHEDULE**

STRUCTURE	TYPE	INV. IN	INV. OUT	TOP ELEV.	STD. DETAIL
I-1	Double S Comb		419.81	423.56	
I-2	R-5	415.63	415.38	420.01	P.119-A Dwg. 64-F
I-3	R-10		416.00	420.01	P.119-A Dwg. 64-F
I-4	R-5	433.37	433.12	438.52	P.119-A Dwg. 64-F
I-5	R-10	434.48	433.73	438.52	P.119-A Dwg. 64-F
I-6	Double S Comb	437.75	437.50	444.06	
I-7	Single S Comb		440.02	444.06	
M-1	"B" Shallow	404.37	404.12	409.95	
M-2	Std. Manhole	418.49	412.70	422.28	P.158 Dwg. D103
M-3	"B" Shallow	437.95	437.70	442.17	
S-1	Support Wall		383.01	384.76	P.101 Dwg. D-46
S-2	Std. Type "E"		420.19	423.69	P.109 Dwg. D-54



APPROVED  
DIVISION OF LAND DEVELOPMENT  
AND TRANSPORTATION PLANNING  
HOWARD COUNTY, MARYLAND  
DATE 1/14/74



DESIGNED BY: C. J. CROVO  
DRAFTED BY: A. R. ZIERDEN  
CHECKED BY: R. B. CARTER

PURDUM AND JESCHKE  
CONSULTING ENGINEERS AND  
LAND SURVEYORS  
1023 N. CALVERT STREET  
BALTIMORE, MARYLAND 21202

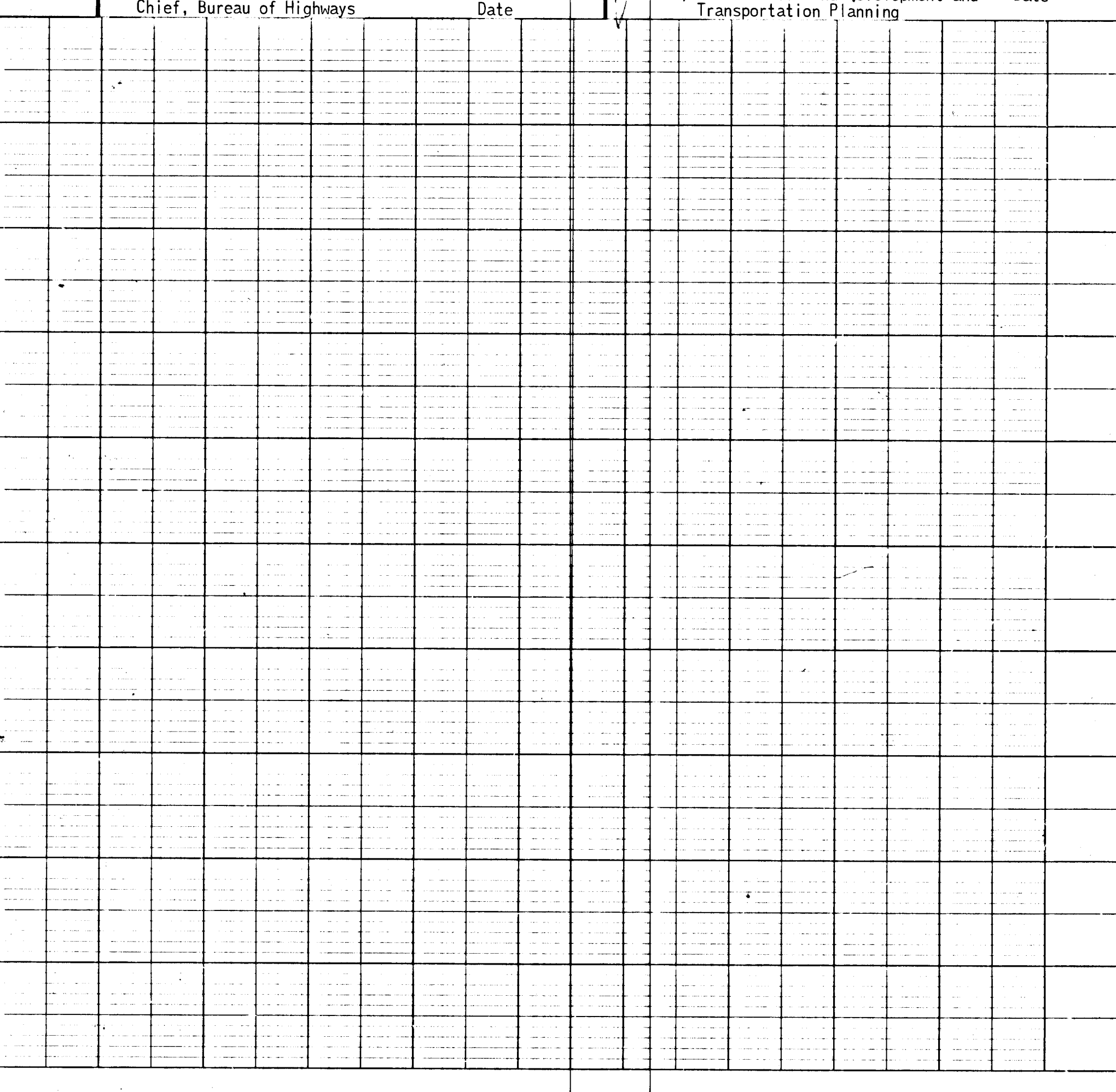
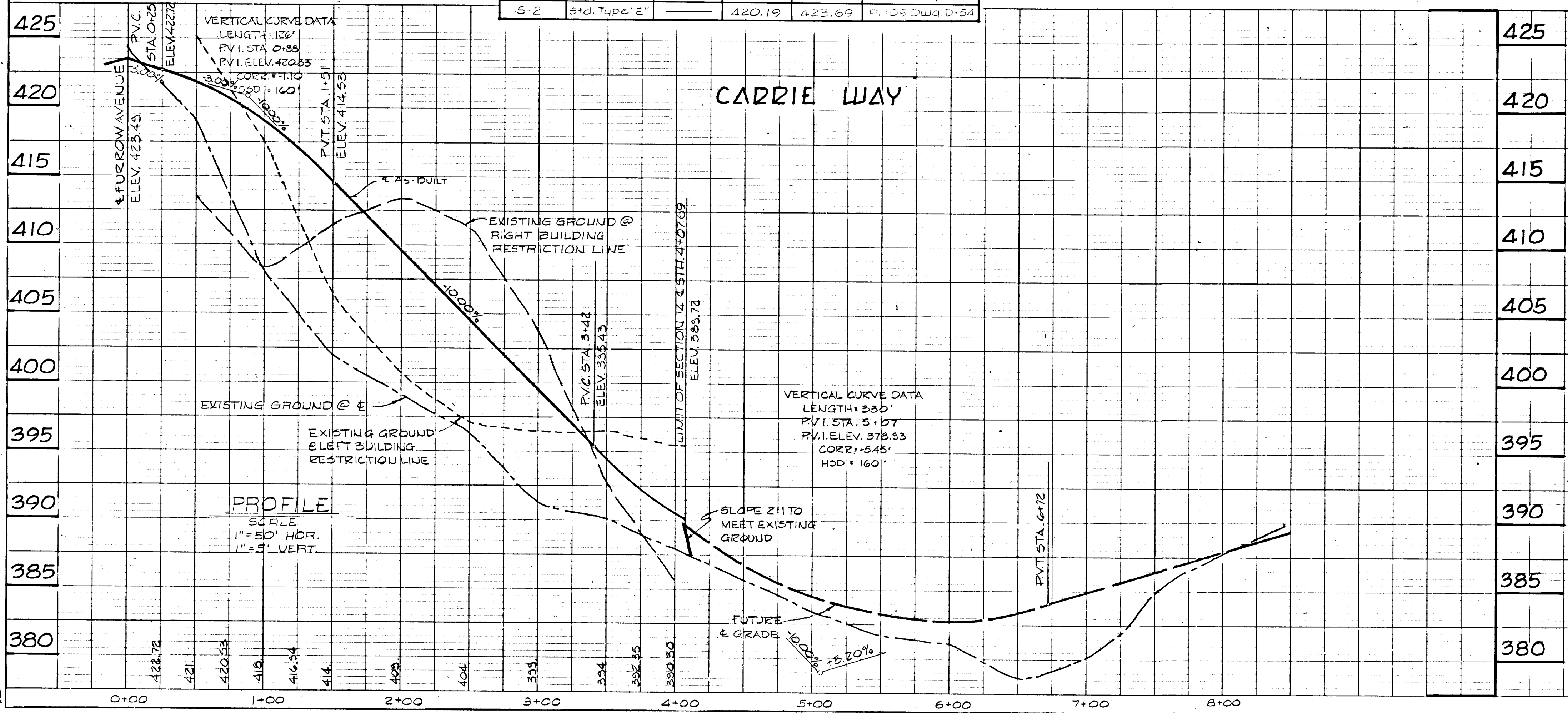
OWNER AND DEVELOPER  
MOUNT HEBRON, INC.  
2417 MOUNT HEBRON DRIVE  
ELLCOTT CITY, MARYLAND 21043

SEDIMENT CONTROL DETAILS AND ROAD PROFILE

# MT. HEBRON

2ND ELECTION DISTRICT SECTION 14 HOWARD COUNTY, MARYLAND  
OCTOBER 5, 1973 SHEET 3 OF 4 SCALE: AS SHOWN

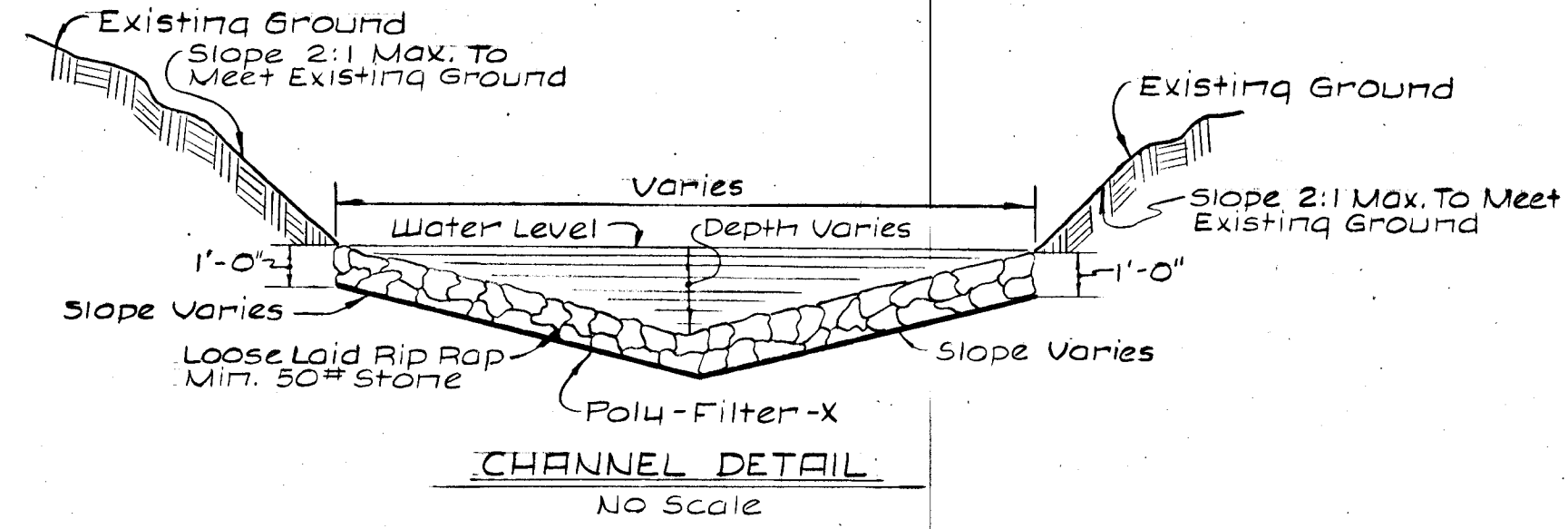
*W. J. Gilbert* 1-26-74 *S. J. Clawson* 3/10/74  
Chief, Bureau of Highways Date Chief, Division of Land Development and Transportation Planning Date





DATE  
BY  
SURVEYED  
PLOTTER  
NOTE BOOK  
NO. OF WAY CHECKED

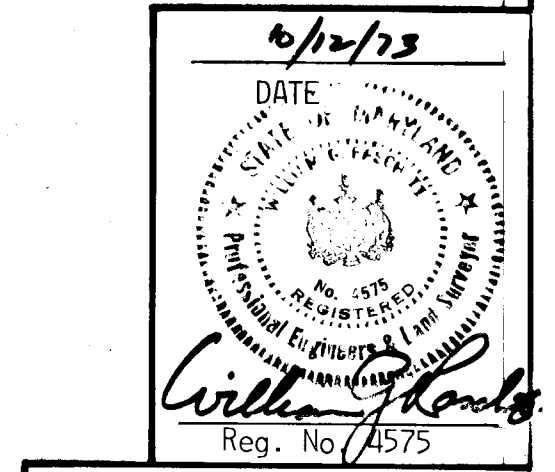
DATE  
BY  
SURVEYED  
PLOTTER  
NOTE BOOK  
NO. OF WAY CHECKED  
STRUCTURE LOCATIONS CHECKED



**CHANNEL "A" DESIGN DATA**  
 A=6.05' Side S=1.00%  
 P=11.22' Slopes S/2=0.1000  
 R=0.54' m=0.03  
 R2/3=0.663 Water Depth=1.1'  
 U=1.485/77 x R2/3 x S1/2  
 U=1.485/10.05 x 0.663 x 0.1000  
 Q=FXU  
 Q=20.0 cfs.

**CHANNEL "B" DESIGN DATA**  
 A=3.86' Side S=1.60%  
 P=12.46' Slopes S/2=0.3950  
 R=0.31' m=0.05  
 R2/3=0.458 Water Depth=0.62'  
 U=1.485/77 x R2/3 x S1/2  
 U=1.485/10.04 x 0.458 x 0.3950  
 Q=FXU  
 Q=20.7 cfs.

APPROVED  
 DIVISION OF LAND DEVELOPMENT  
 AND TRANSPORTATION PLANNING  
 HOWARD COUNTY, MARYLAND  
 DATE 1/14/74



DESIGNED BY: C.J. GROVO  
 DRAFTED BY: A.R. ZIERDAN  
 CHECKED BY: R.B. CARTER

PURDUM AND JESCHKE  
 CONSULTING ENGINEERS AND  
 LAND SURVEYORS  
 1023 N. CALVERT STREET  
 BALTIMORE, MARYLAND 21202

OWNER AND DEVELOPER  
 MOUNT HEBRON, INC.  
 2417 MOUNT HEBRON DRIVE  
 ELLICOTT CITY, MARYLAND 21043

STORM DRAIN PROFILES  
**MT. HEBRON**  
 2ND ELECTION DISTRICT SECTION 14 HOWARD COUNTY, MARYLAND  
 OCTOBER 5, 1973 SHEET 4 OF 4 SCALE: AS SHOWN

*W. J. Zierdan* 4-26-74 *W. J. Zierdan* 3/18/74  
 Chief, Bureau of Highways Date Chief, Division of Land Development and Transportation Planning Date

