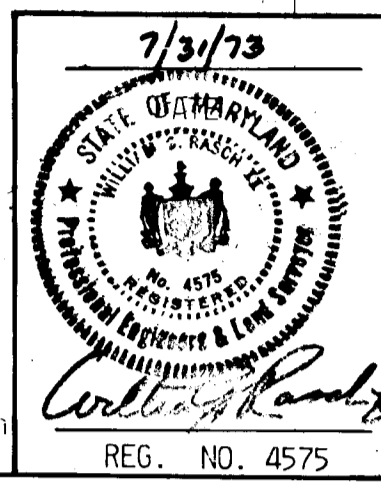


GENERAL NOTES

- 1) All construction shown hereon shall be in accordance with the Howard County Road Construction Code and Standard Specifications dated November 27, 1962 and revised August 1967.
- 2) Reference to page and drawing numbers shown hereon and referred to the above mentioned Road Construction Code and Standard Specifications.
- 3) Design Speed - 25 mph.



DRAFTED BY: A.R. ZIERDEN
 DESIGNED BY: C.J. CROWD
 CHECKED BY: R.B. CARTER

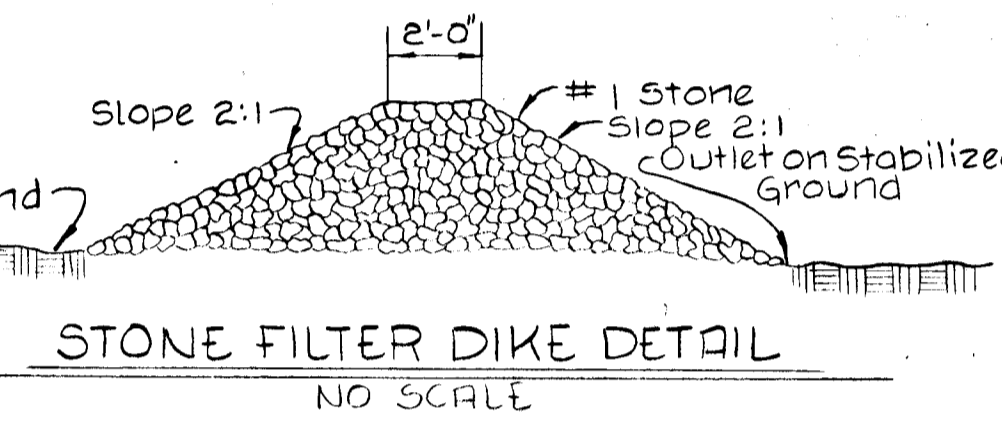
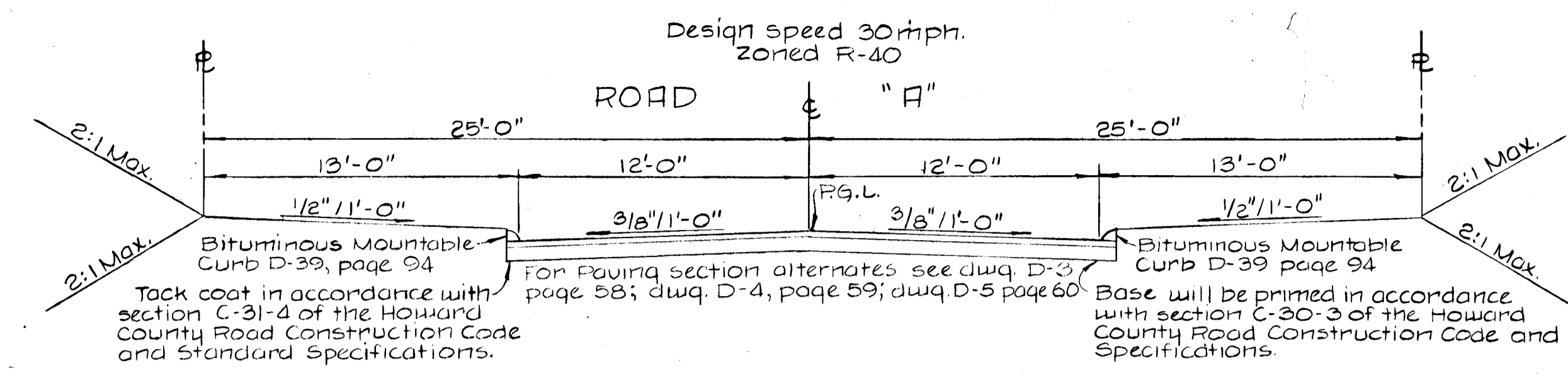
PURDUM AND JESCHKE
 CONSULTING ENGINEERS AND
 LAND SURVEYORS
 1023 NORTH CALVERT STREET
 BALTIMORE, MARYLAND 21202

OWNER AND DEVELOPER:
 C. ELLSWORTH LAGER, ET AL.
 FILTON, MARYLAND 20759

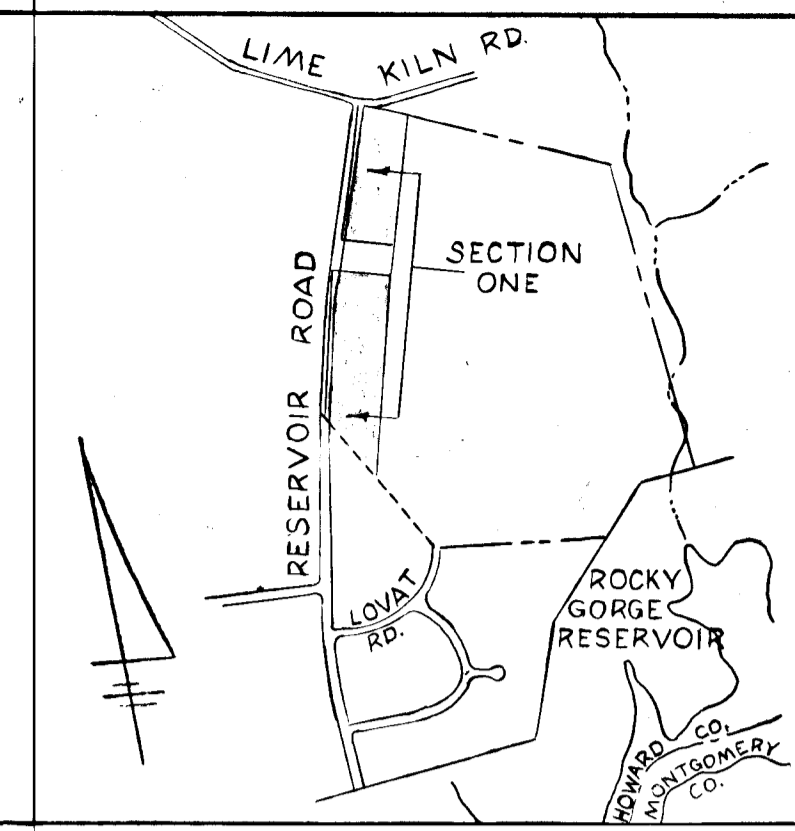
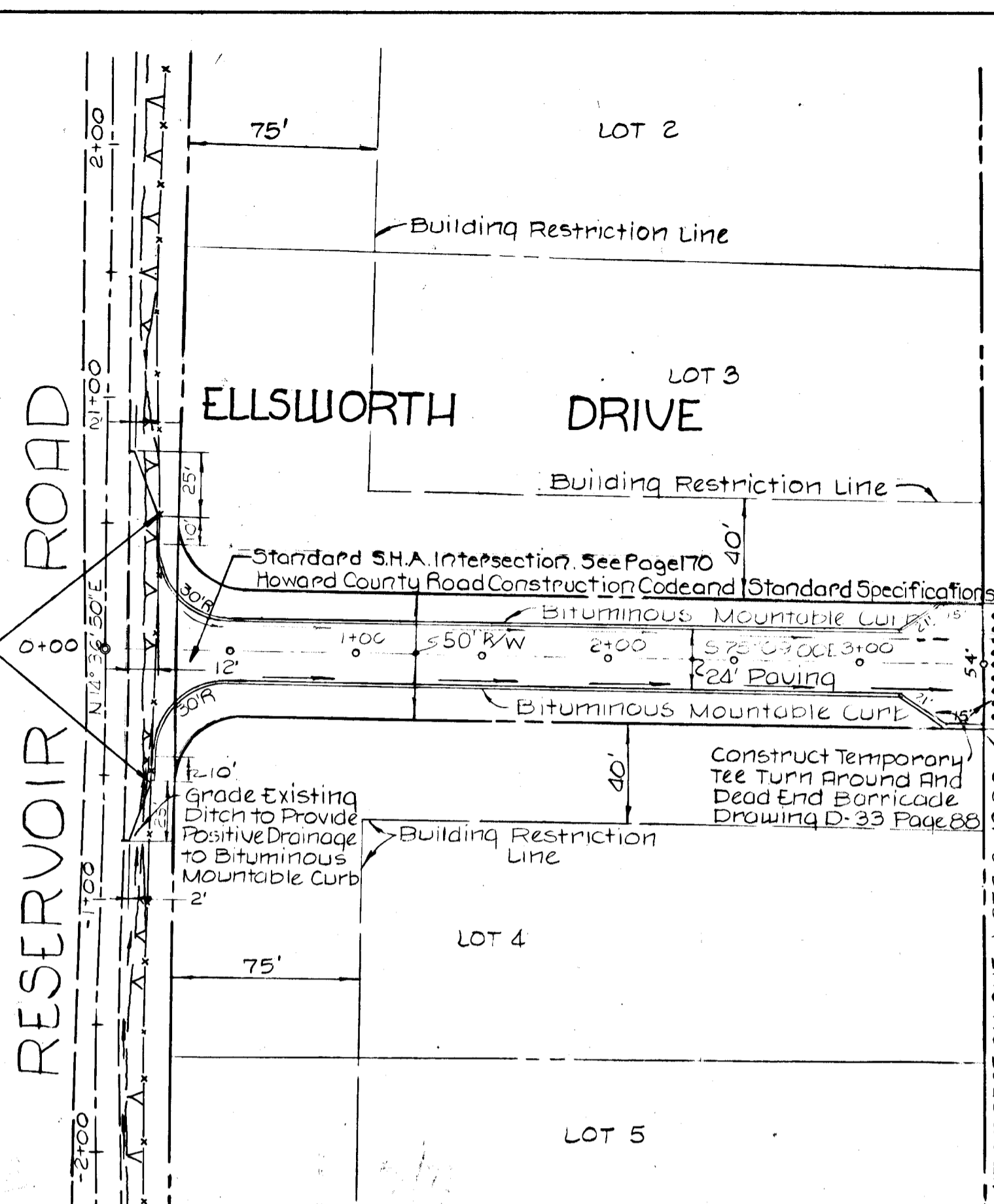
SEDIMENT CONTROL NOTES

- 1) The developer shall notify the Howard County Soil Conservation District at least 24 hours prior to beginning any construction shown hereon (465-3180).
- 2) Berms, sediment traps, etc., to be constructed prior to any onsite grading or disturbance to any existing surface material, and are to be stabilized as soon as constructed.
- 3) All sediment control structures to remain in place until permission for their removal has been obtained from the Howard Soil Conservation District. (465-3180 or 465-500 EXT. 291)
- 4) All graded areas not to be sodded shall be stabilized by seeding and mulching in accordance with the following:
 - A. Site Preparation:
 - 1) Harrow or disc in areas proposed to be seeded the following materials at the specified rate, to a depth of 3":
 - 1) Pulverized limestone at 1 1/2 tons /acre.
 - 2) Commercial fertilizer 5-10-10 at 3/4 tons /acre.
 - 3) Super phosphate at 6.00 lbs /acre.
 - 2) Seeding:
 - 1) Sow the following seed mixture at the rate of 200 lbs./acre with a mechanical spreader:
 - 1) 20% Annual Rye Grass
 - 2) 80% Kentucky 31 Fescue
 - 2) The seeded area shall then be raked with a York Rake (minimum of 2 passes), covered and compacted with Cultitracker or other approved method.
 - 3) Mulching:
 - 1) Seeded areas shall be uniformly mulched immediately after seeding with unweathered small grain straw at the rate of 1 1/2 to 2 tons/acre.
 - 2) Tie mulch down with liquid asphalt at 0.1 gal/s.y. or emulsified asphalt at 0.04 gal/s.y. or mulch netting.

TYPICAL SECTION
 No Scale



PLAN
 Scale: 1"=50'



VICINITY MAP - SCALE: 1"=1200'

DEVELOPER'S CERTIFICATE

I certify that all development and/or construction will be done according to this plan of development and plan for Erosion and Sediment Control, and I also authorize periodic on-site inspection by the Howard Soil Conservation District or their authorized agents, as are deemed necessary. Deviation from this plan will not be made unless authorized by the Howard Soil Conservation District.
 C. Ellsworth Lager 8/1/73
 Developer Date

ENGINEER'S CERTIFICATE

I certify that this plan for Erosion and Sediment Control represents a practical and workable plan based on my personal knowledge of the site conditions and that it was prepared in accordance with the requirements of the Howard Soil Conservation District.
 Charles E. Mully 7/31/73
 Signature of Engineer Date

Reviewed for Howard County Soil Conservation District and meets Technical Requirements.
 Charles E. Mully 9/14/73
 U.S. Soil Conservation Service Date

This development plan is approved for Soil Erosion and Sediment Control by the Howard Soil Conservation District.
 Robert W. Zierden 9/14/73
 District Coordinator Date

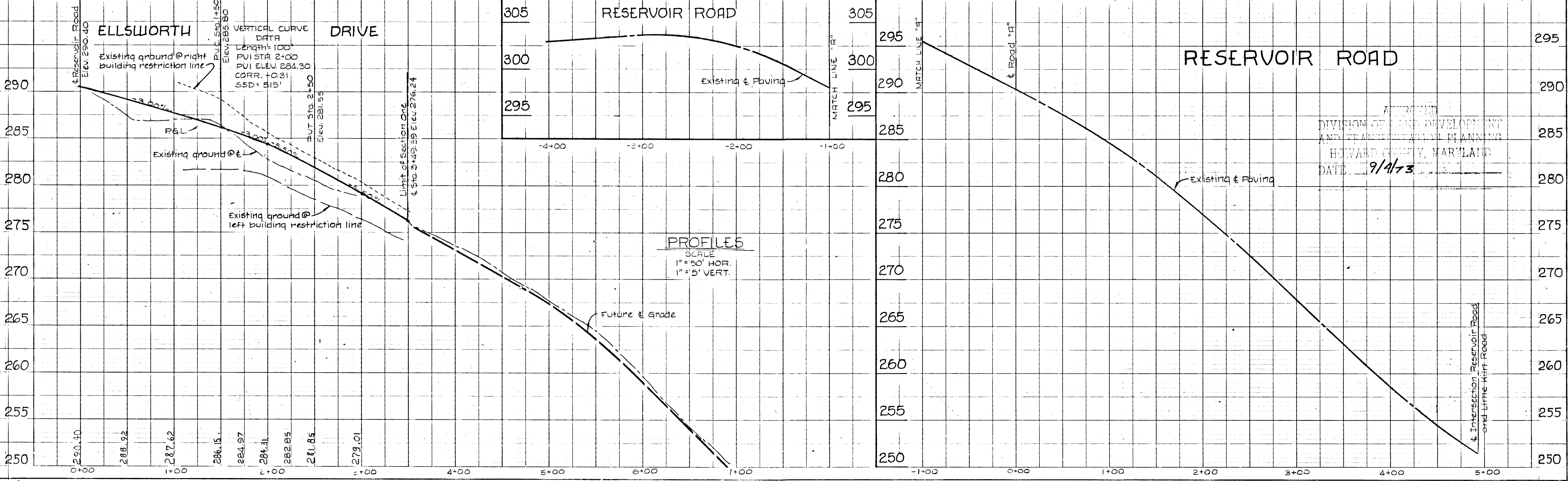
APPROVED: Howard County Soil Conservation District
 District Coordinator
 Howard Soil Conservation District

APPROVED: DEPARTMENT OF PUBLIC WORKS
 J.M. McKeown 9/18/73
 Chief, Bureau of Highways Date

APPROVED: OFFICE OF PLANNING AND ZONING
 J.H. Clausen 9/17/73
 Chief, Division of Land Development and Transportation Planning Date

WILLIAMS CONTRIVANCE ESTATES

FIFTH ELECTION DISTRICT SECTION 1 HOWARD COUNTY, MARYLAND
 JULY 23, 1973 SHEET 1 OF 1 SCALE: 1"=100'



PROFILE 6
 SCALE
 1"=50' HOR.
 1"=5' VERT.

APPROVED
 DIVISION OF LAND DEVELOPMENT
 AND TRANSPORTATION PLANNING
 HOWARD COUNTY, MARYLAND
 DATE 9/4/73