

DEPARTMENT OF PUBLIC WORKS

G. W. Meade 10/2/73
CHIEF, BUREAU OF HIGHWAYS DATE

OFFICE OF PLANNING AND ZONING

CHIEF, DIVISION OF LAND DEVELOPMENT AND TRANSPORTATION PLANNING DATE

COLUMBIA

HOWARD COUNTY, MARYLAND
6TH ELECTION DISTRICT

ROAD CONSTRUCTION PLANS

VILLAGE OF OWEN BROWN

SECTION 1 AREA 1 RESUBDIVISION OF PARCEL "C"

SECTION 1 AREA 2 RESUBDIVISION OF PARCEL "B"

SHEET INDEX	
NO.	DESCRIPTION
1 OF 6	TITLE SHEET
2 OF 6	PLAN AND PROFILE - KNIGHTHOOD LANE
3 OF 6	PLAN AND PROFILE - TALISMAN LANE
4 OF 6	STORM DRAIN PROFILES
5 OF 6	STORM DRAIN DETAILS, PROFILES AND STRUCTURE SCHEDULE
6 OF 6	STORM DRAIN AND CURB AND GUTTER DETAILS

APPROVED
DIVISION OF LAND DEVELOPMENT
AND TRANSPORTATION PLANNING
HOWARD COUNTY, MARYLAND
DATE AUG 28 1973

[Signature]

P.C. 2+08.95 TO P.T. 4+05.30

Δ: 90°00'00"
R: 125.00'
A: 196.95'
T: 125.00'
Ch: 176.78'
Ch. Brg.: S 02°28'24"E

P.C. 7+05.30 TO P.T. 7+28.86

Δ: 90°00'00"
R: 15.00'
A: 23.56'
T: 15.00'
Ch: 21.21'
Ch. Brg.: S 02°28'24"E

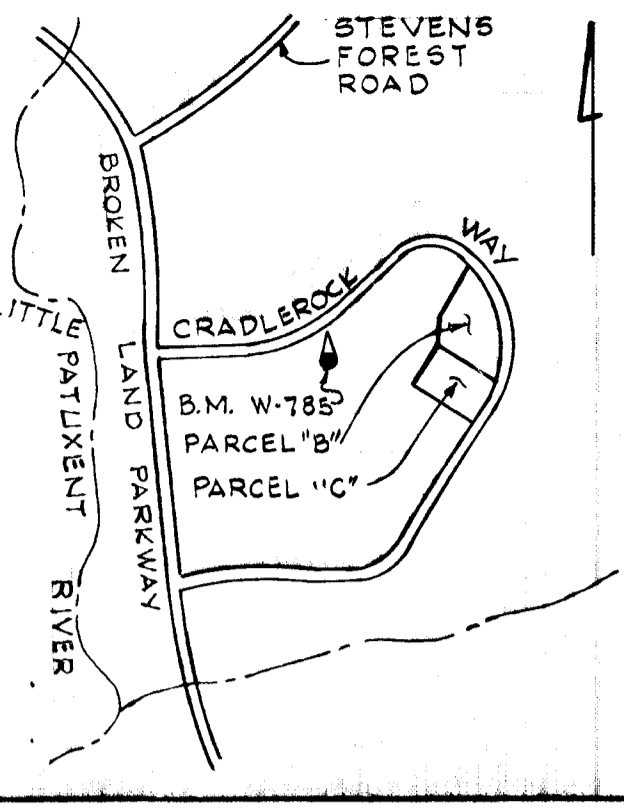
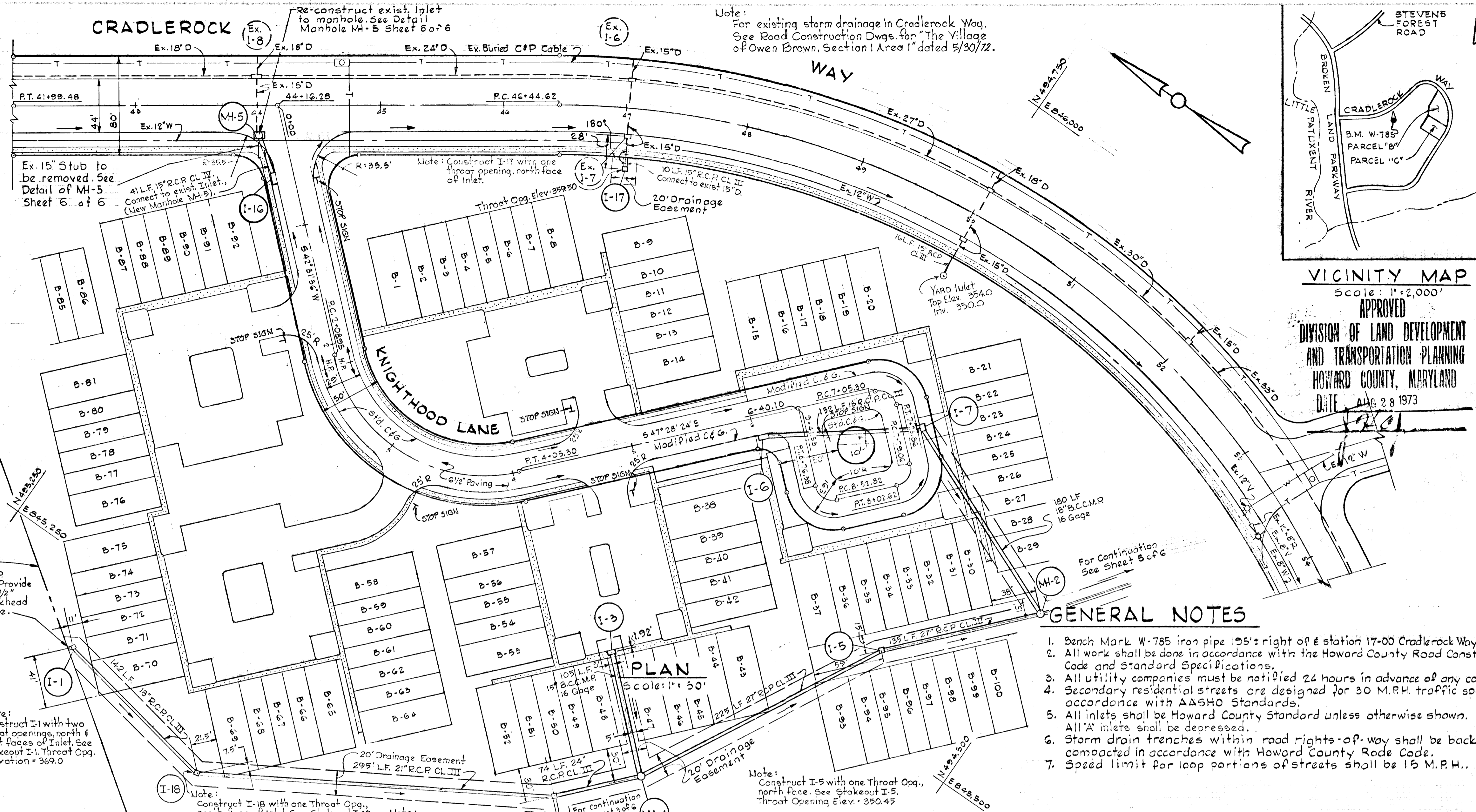
P.C. 7+79.06 TO P.T. 8+02.62

Δ: 90°00'00"
R: 15.00'
A: 23.56'
T: 15.00'
Ch: 21.21'
Ch. Brg.: S 87°31'36"W

P.C. 8+52.82 TO P.T. 8+76.38

Δ: 90°00'00"
R: 15.00'
A: 23.56'
T: 15.00'
Ch: 21.21'
Ch. Brg.: N 02°28'24"W

CRADLEROCK



VICINITY MAP
Scale: 1"=2,000'
APPROVED
DIVISION OF LAND DEVELOPMENT
AND TRANSPORTATION PLANNING
HOWARD COUNTY, MARYLAND
DATE: AUG 28 1973

DEPARTMENT OF PUBLIC WORKS
J. H. McCard
CHIEF, BUREAU OF HIGHWAYS 10/2/72 DATE
OFFICE OF PLANNING AND ZONING
W. A. Brown 9/27/73 DATE
CHIEF, DIVISION OF LAND DEVELOPMENT
AND TRANSPORTATION PLANNING

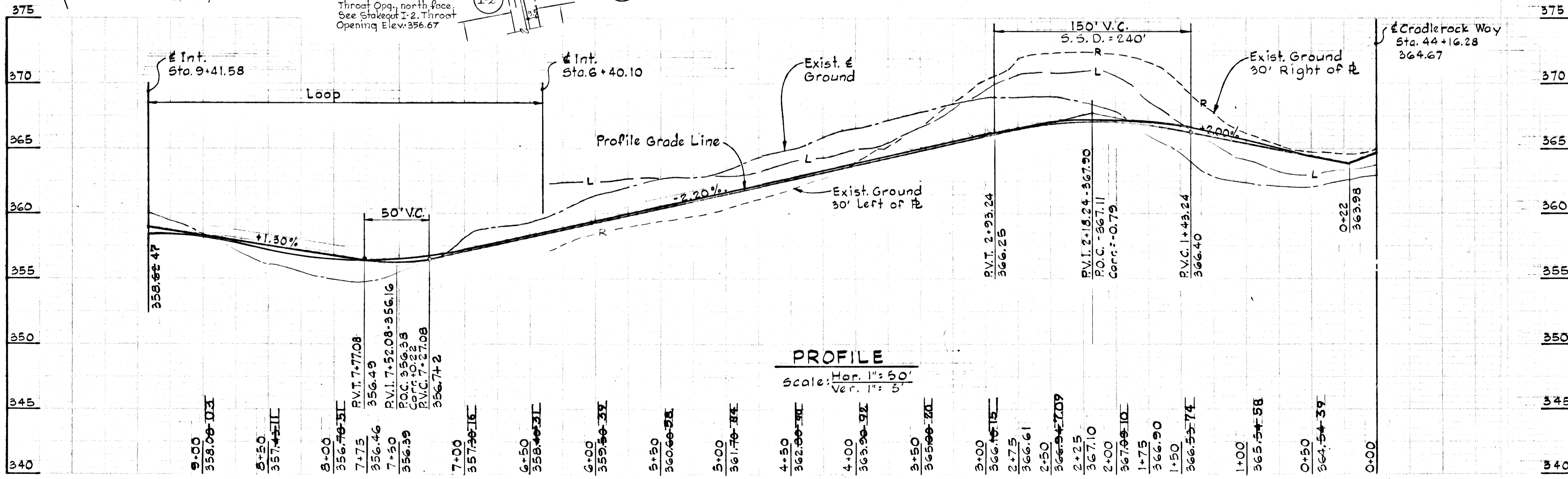
Rev. Date	Rev. No.	Revision Description
		COLUMBIA ELECTION DISTRICT HOWARD COUNTY, MARYLAND
		OWNER AND DEVELOPER HOWARD HOMES, INC.
PROJECT AREA VILLAGE OF OWEN BROWN		
SECTION 1, AREA 1-RESUBDIVISION OF PARCEL 'C'		
SECTION 1, AREA 2-RESUBDIVISION OF PARCEL 'B'		
PROJECT TITLE PLAN AND PROFILE KNIGHTHOOD LANE		
SCALE: As shown		DATE: SEPT. 20, 1973
WHITMAN, REQUARDT & ASSOCIATES ENGINEERS BALTIMORE, MARYLAND 21202		
Kenneth A. McCord KENNETH A. MCCORD Registered Engineer No. 1974		

GENERAL NOTES

- Bench Mark W-785 iron pipe 195' right of & station 17+00 Cradlerock Way. Elev. 351.78
- All work shall be done in accordance with the Howard County Road Construction Code and Standard Specifications.
- All utility companies must be notified 24 hours in advance of any construction.
- Secondary residential streets are designed for 30 M.P.H. traffic speed in accordance with AASHO Standards.
- All inlets shall be Howard County Standard unless otherwise shown. All "X" inlets shall be depressed.
- Storm drain trenches within road rights-of-way shall be backfilled and compacted in accordance with Howard County Code.
- Speed limit for loop portions of streets shall be 15 M.P.H..

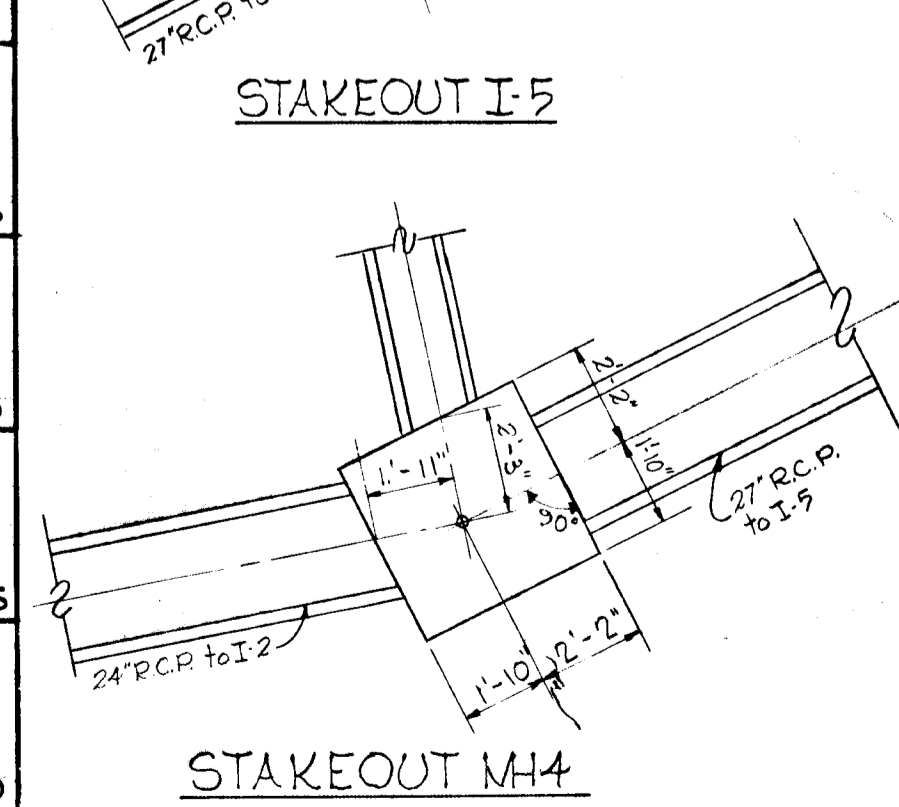
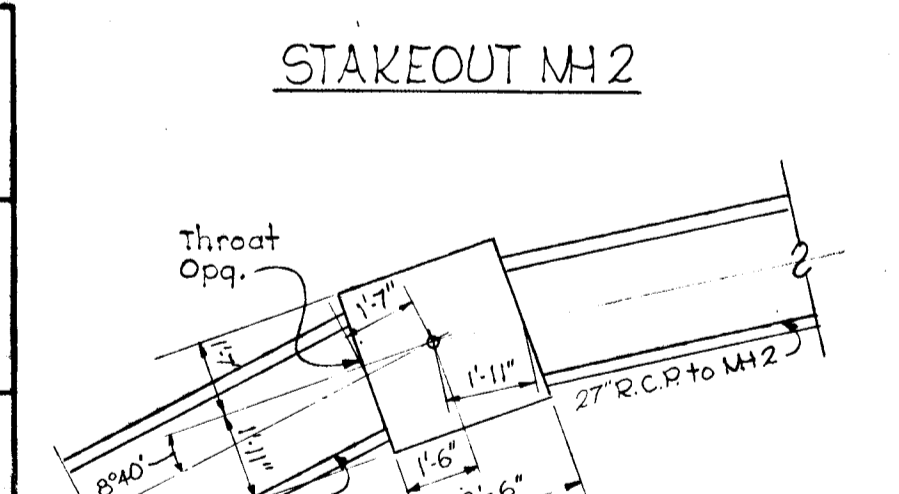
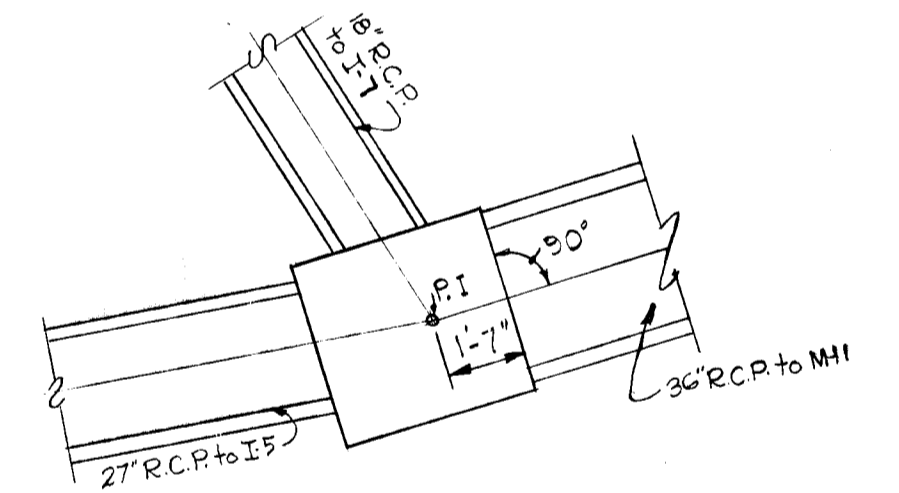
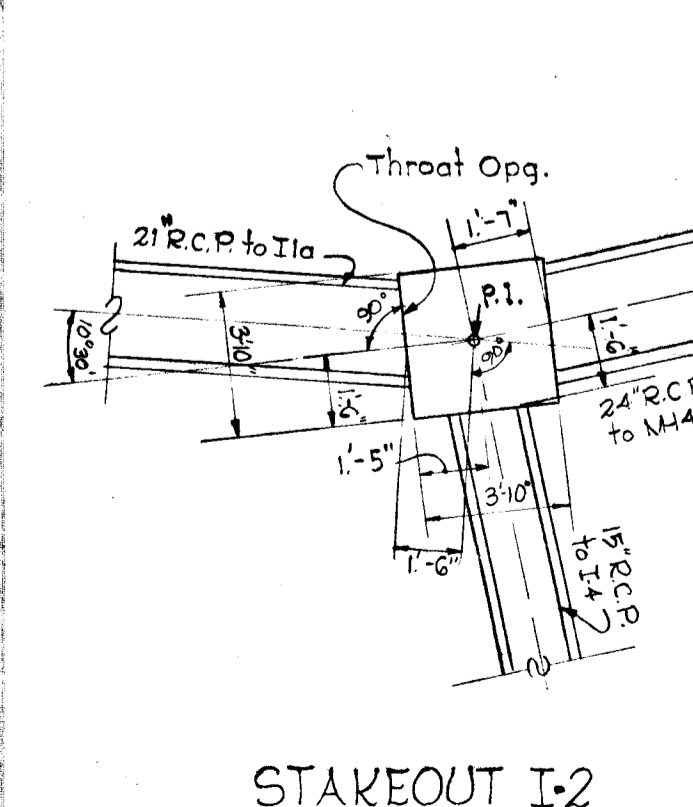
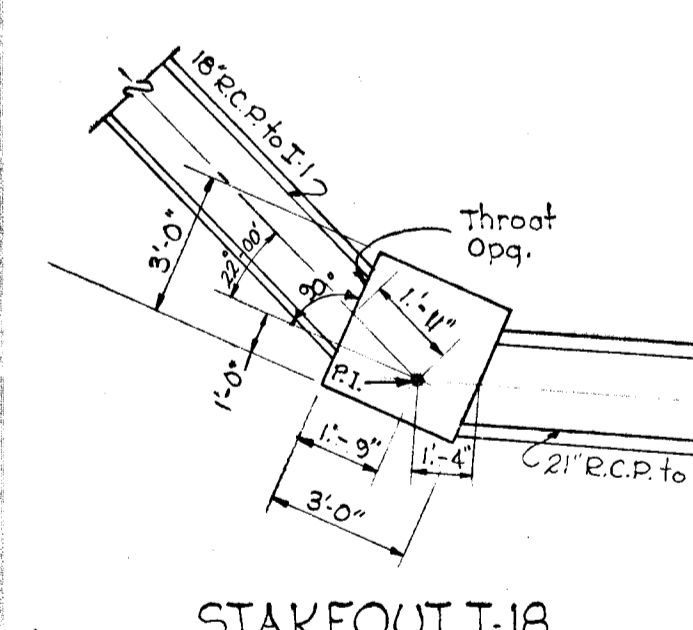
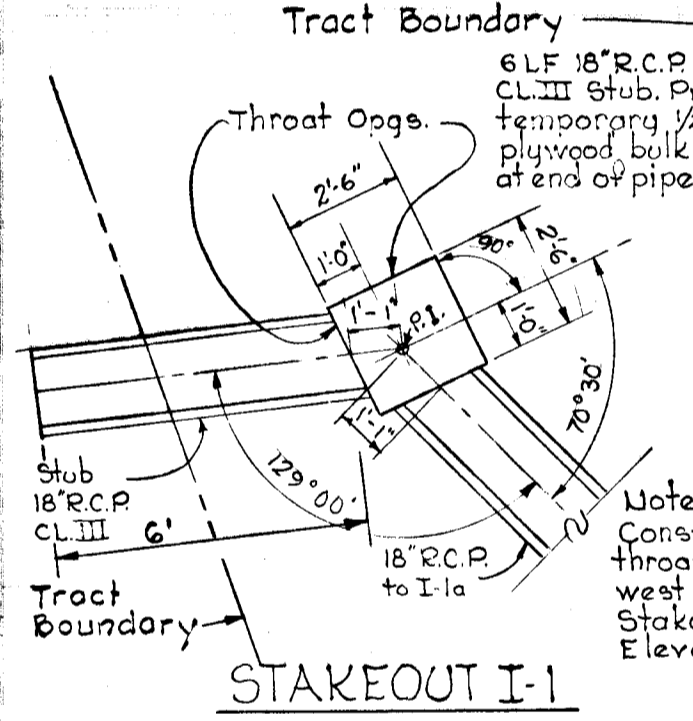
PLAN

Scale: 1"=50'

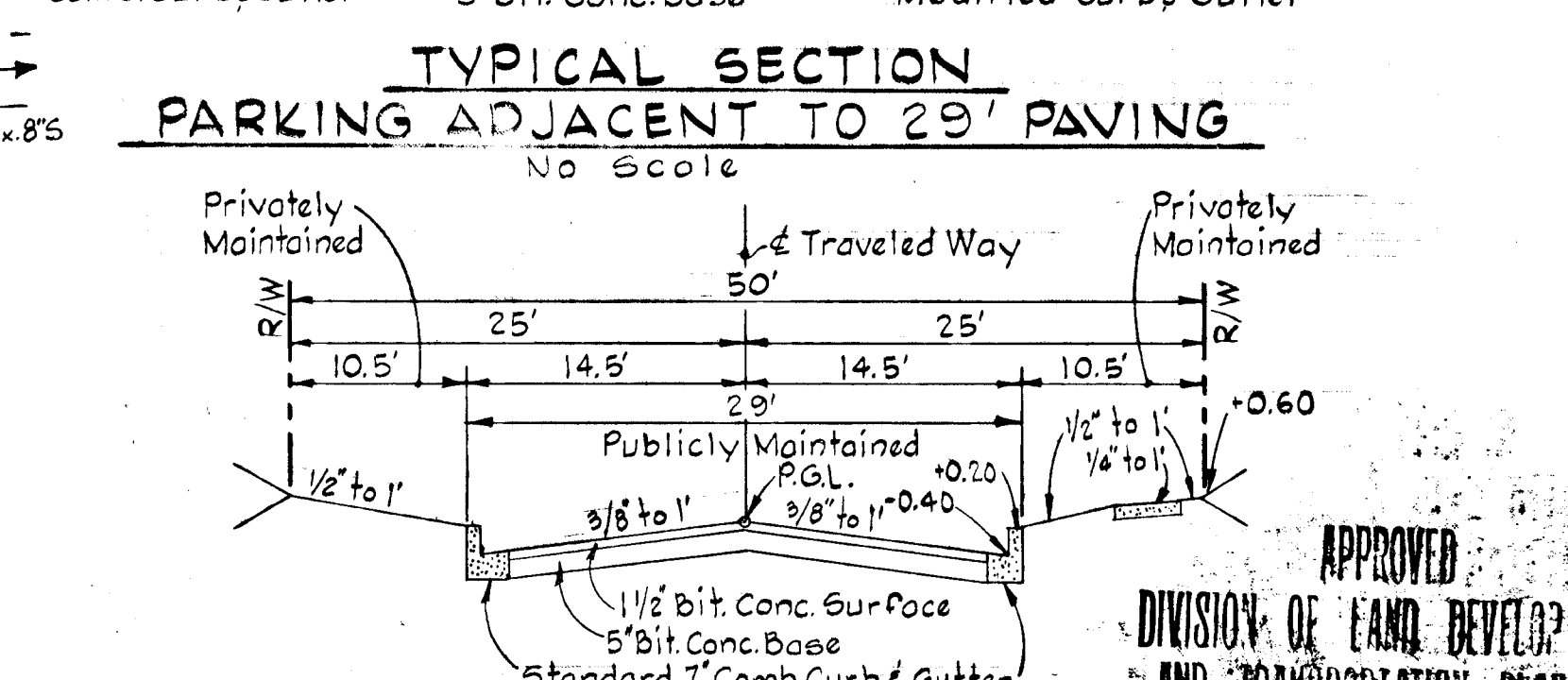
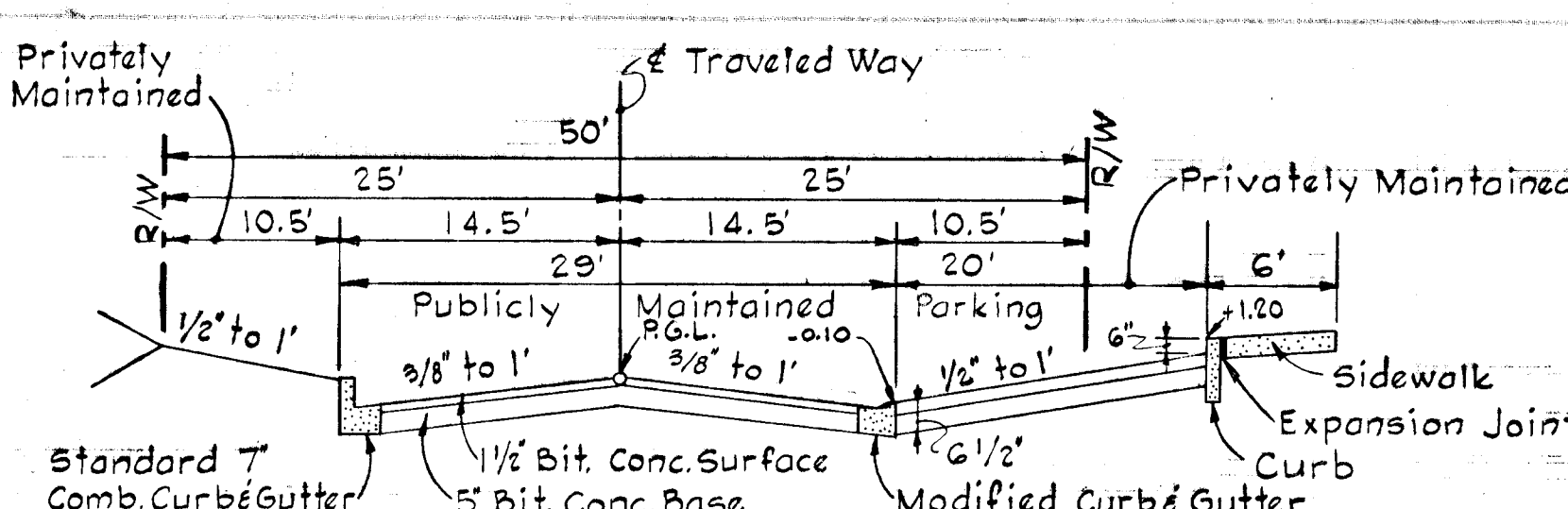
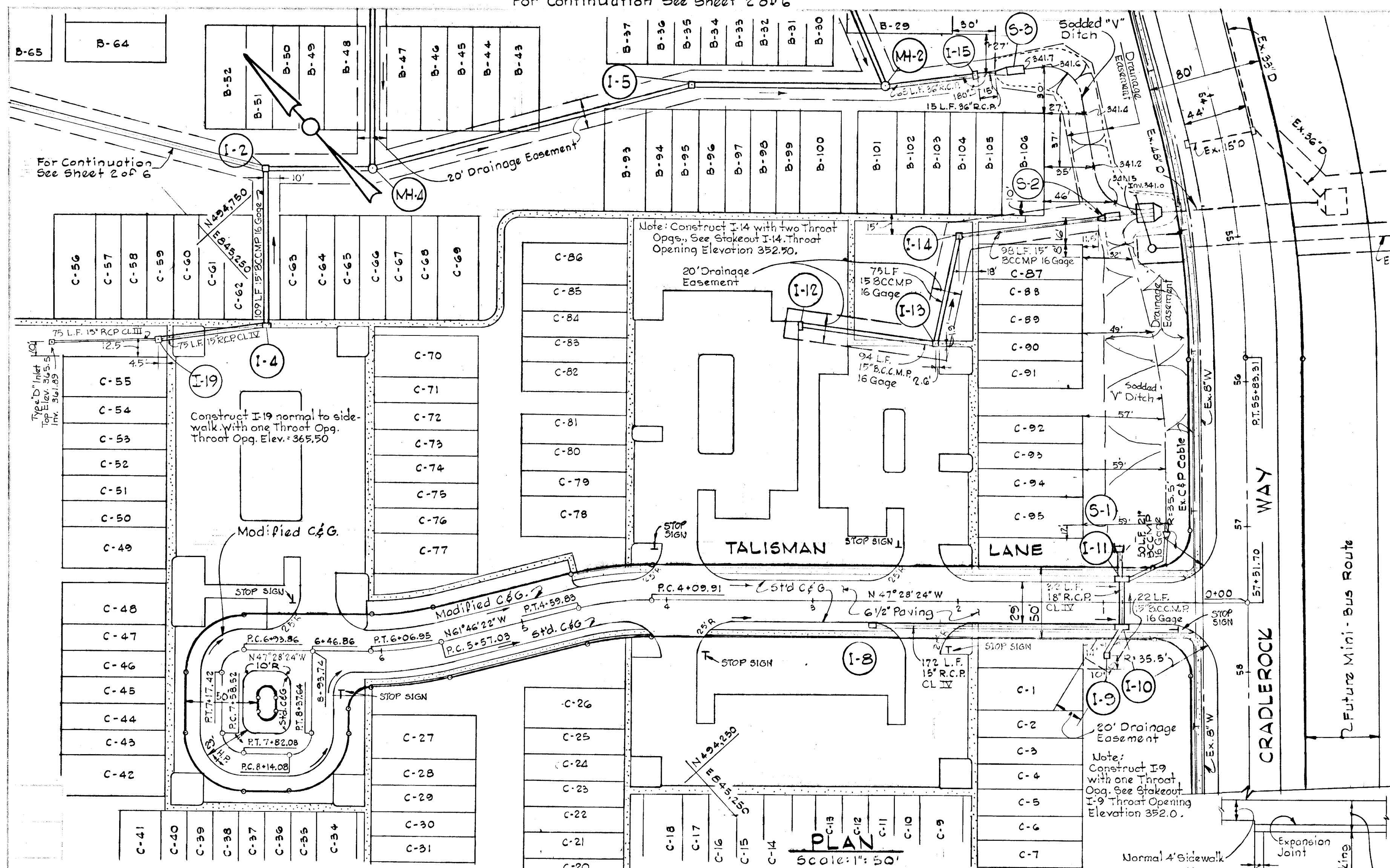


PROFILE

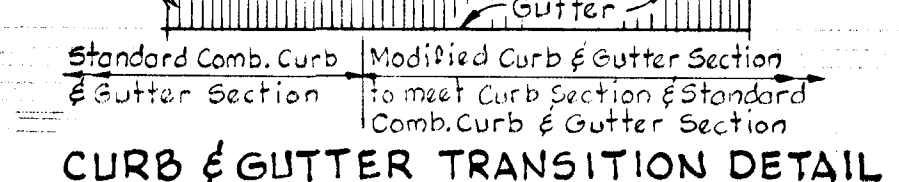
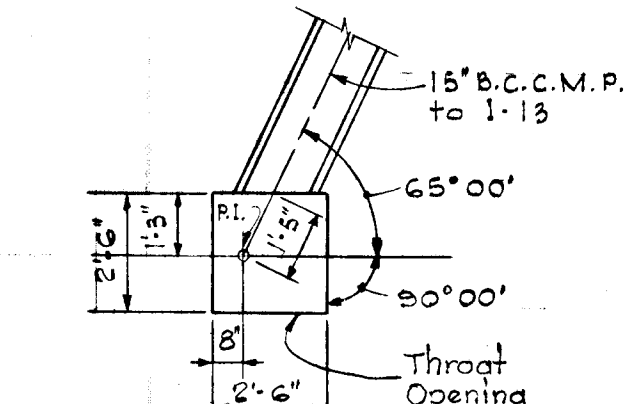
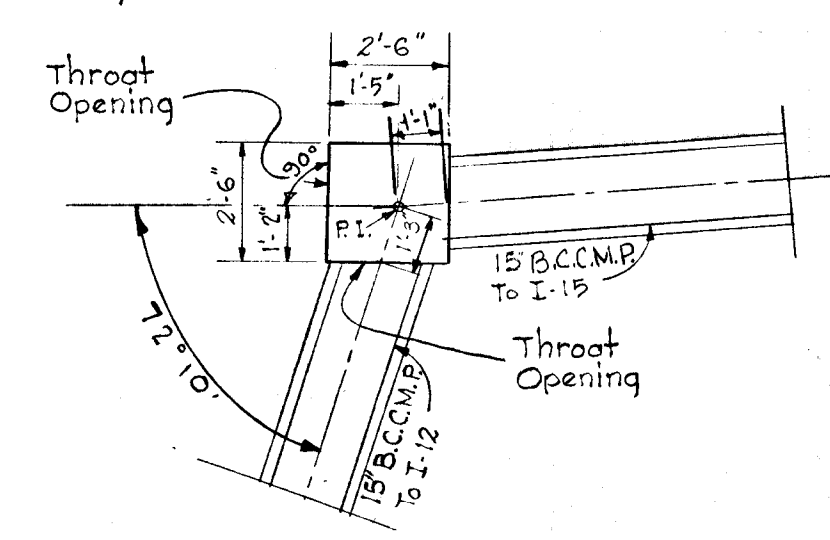
Scale: Hor. 1"=50'
Ver. 1"=5'



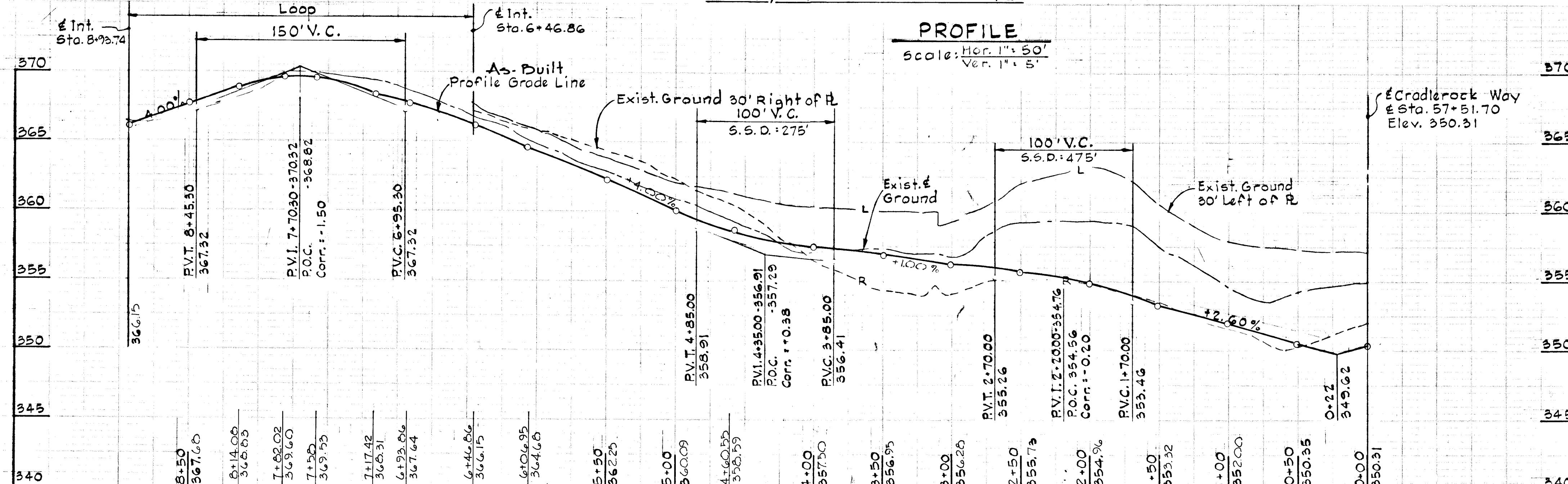
For Continuation See Sheet 2 of 6



NOTES:
 1. Standard 7" Comb. and Modified Curb and Gutter shall be in accordance with County Standard D-40, Page 95.
 2. Paving (6 1/2") shall be in accordance with County Standard D-11, Page 66.
 3. Transition from Standard 7" Comb. Curb and Gutter to Modified Curb and Gutter shall be in accordance with detail shown on this sheet.
 4. Tack Coat is required in accordance with Section C-31.4 of the Howard County Road Construction Code and Standard Spec.
 5. Base will be primed in accordance with C-30.3 as provided in the Howard County Road Construction Code and Standard Spec.



Stationing	Delta	Radius	Angle	Tangent	Chord	Bearing
PC. 4+09.91 TO PT. 4+59.83	Δ: 14° 17' 58"	R: 200.00'	A: 49.92'	T: 25.09'	Ch: 49.79'	Brg: N 54° 37' 23" W
PC. 5+57.09 TO PT. 6+06.95	Δ: 14° 17' 58"	R: 200.00'	A: 49.92'	T: 25.09'	Ch: 49.79'	Brg: N 54° 37' 23" W
PC. 6+06.95 TO PT. 7+17.42	Δ: 90° 00' 00"	R: 15.00'	A: 23.56'	T: 15.00'	Ch: 21.21'	Brg: S 87° 31' 36" W
PC. 7+58.52 TO PT. 7+82.08	Δ: 90° 00' 00"	R: 15.00'	A: 23.56'	T: 15.00'	Ch: 21.21'	Brg: S 02° 28' 24" E
PC. 8+14.08 TO PT. 8+37.64	Δ: 90° 00' 00"	R: 15.00'	A: 23.56'	T: 15.00'	Ch: 21.21'	Brg: N 87° 31' 36" E



DEPARTMENT OF PUBLIC WORKS
 S. M. McCalland 10/2/73
 CHIEF, BUREAU OF HIGHWAYS DATE
 OFFICE OF PLANNING AND ZONING
 CHIEF, DIVISION OF LAND DEVELOPMENT AND TRANSPORTATION PLANNING DATE

COLUMBIA
 3RD ELECTION DISTRICT
 HOWARD COUNTY, MARYLAND

OWNER AND DEVELOPER
 HOWARD HOMES, INC.

PROJECT AREA
 VILLAGE OF OWEN BROWN

SECTION 1, AREA 1 - RESUBDIVISION OF PARCEL 'C'
 SECTION 1, AREA 2 - RESUBDIVISION OF PARCEL 'B'

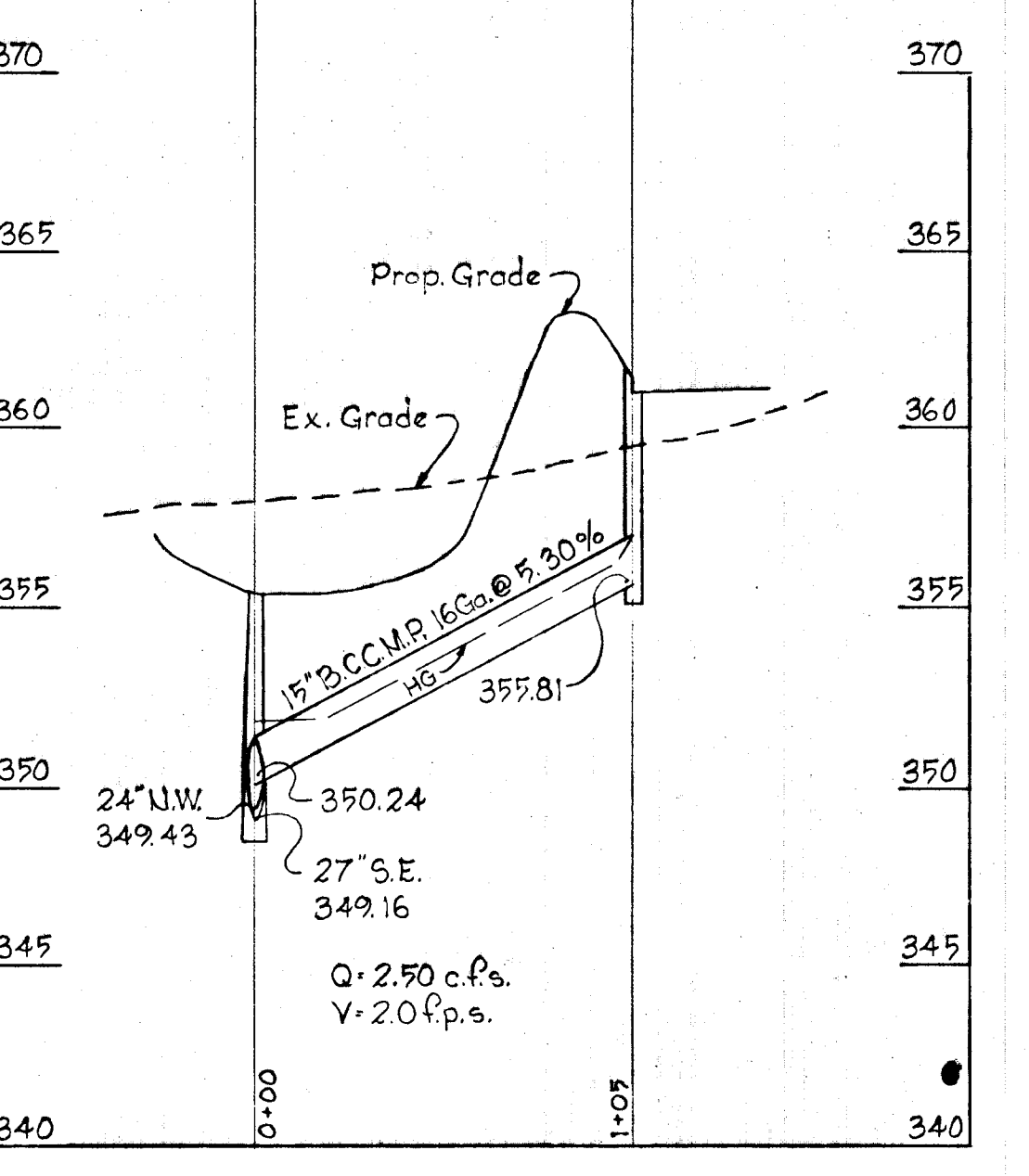
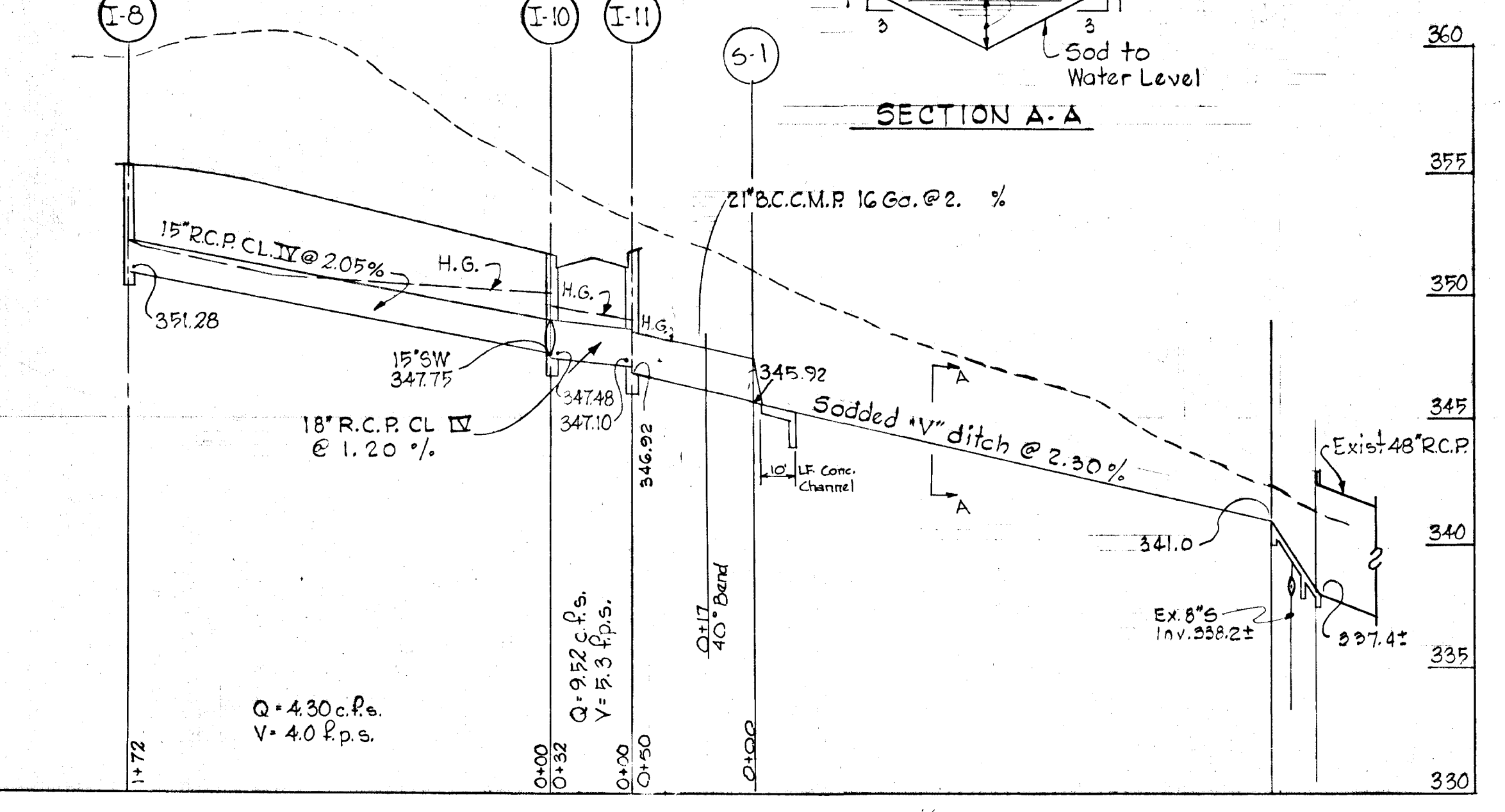
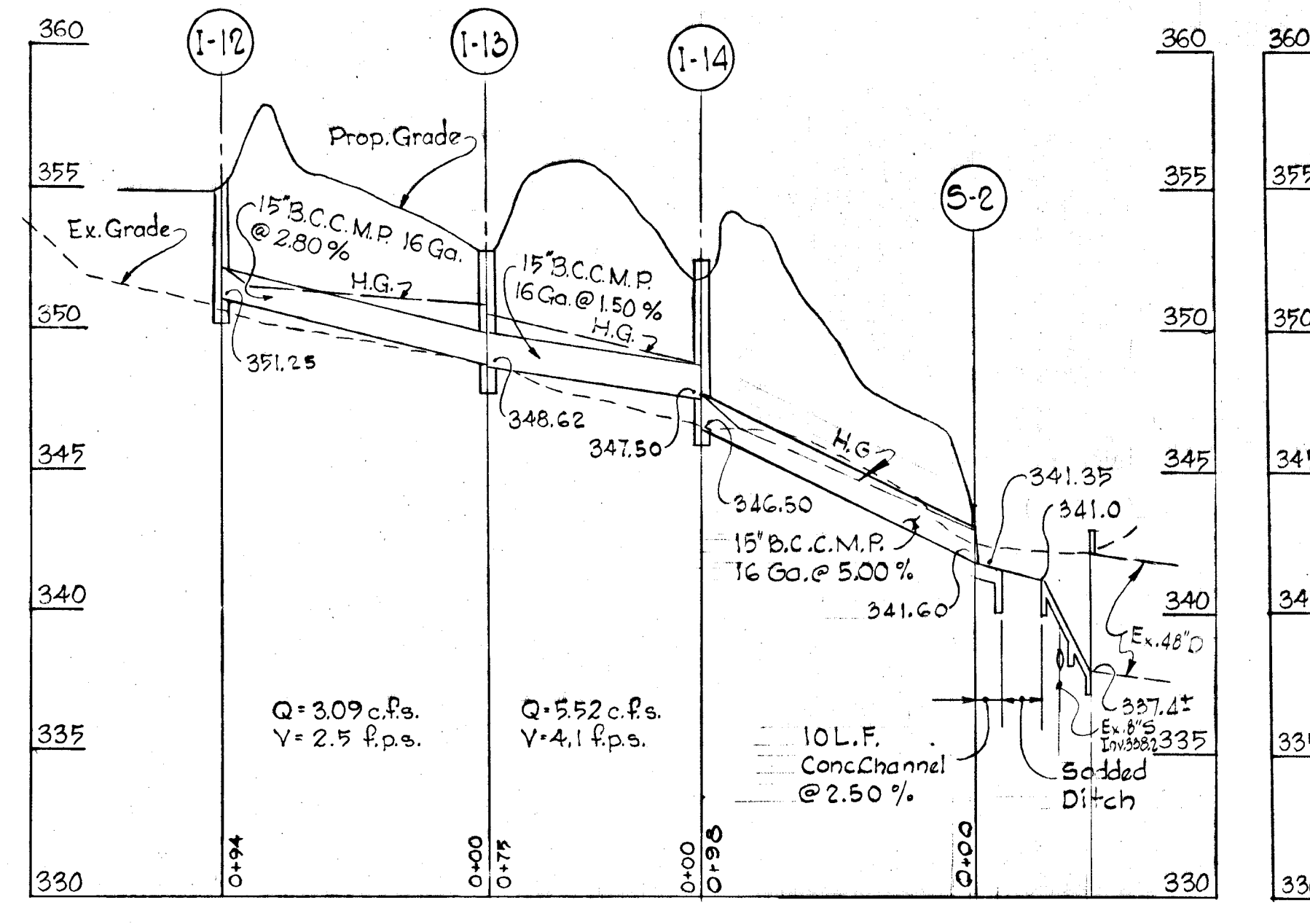
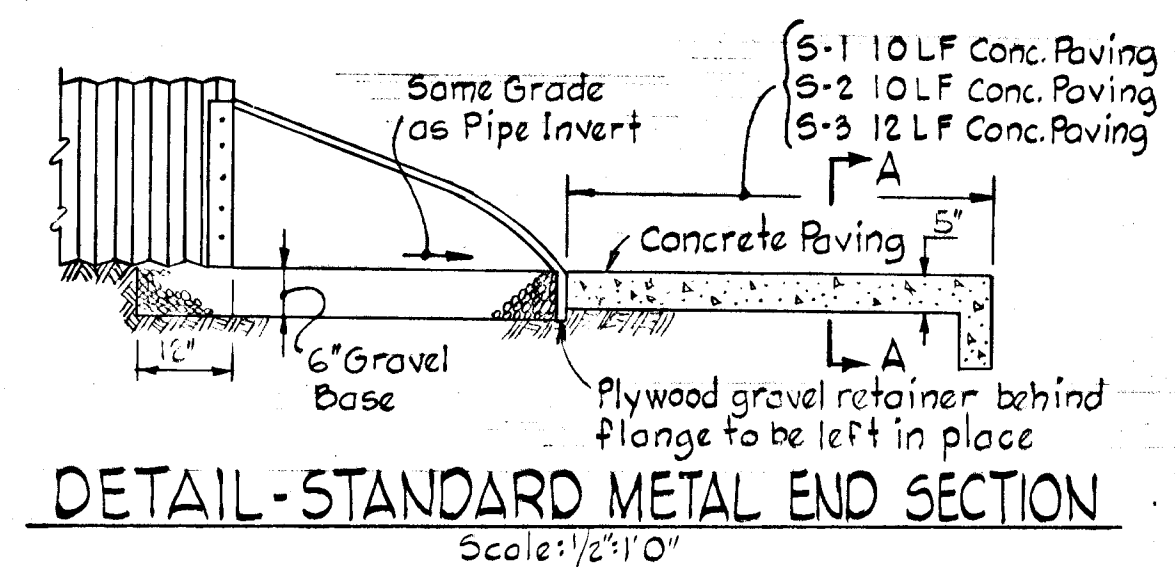
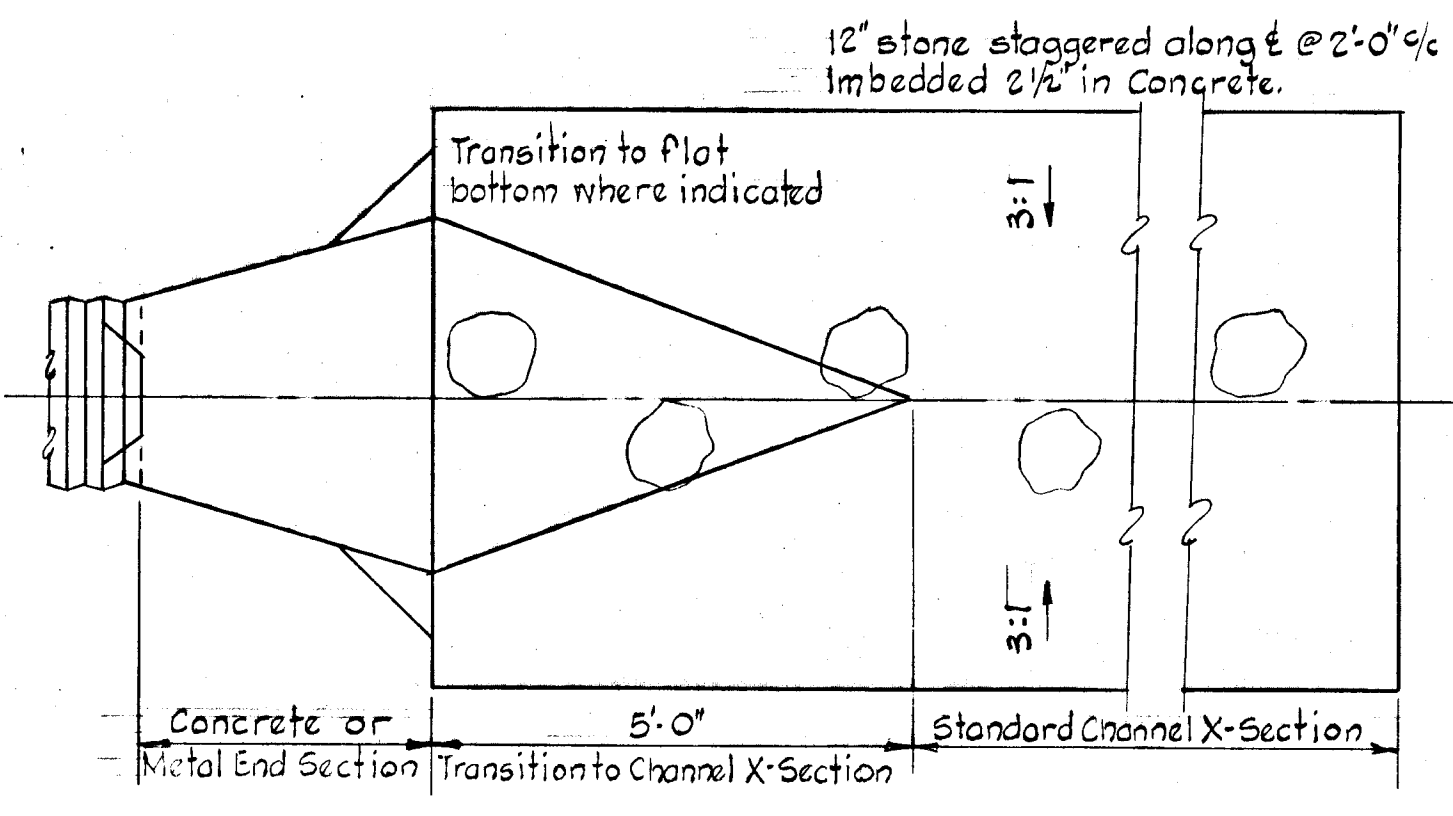
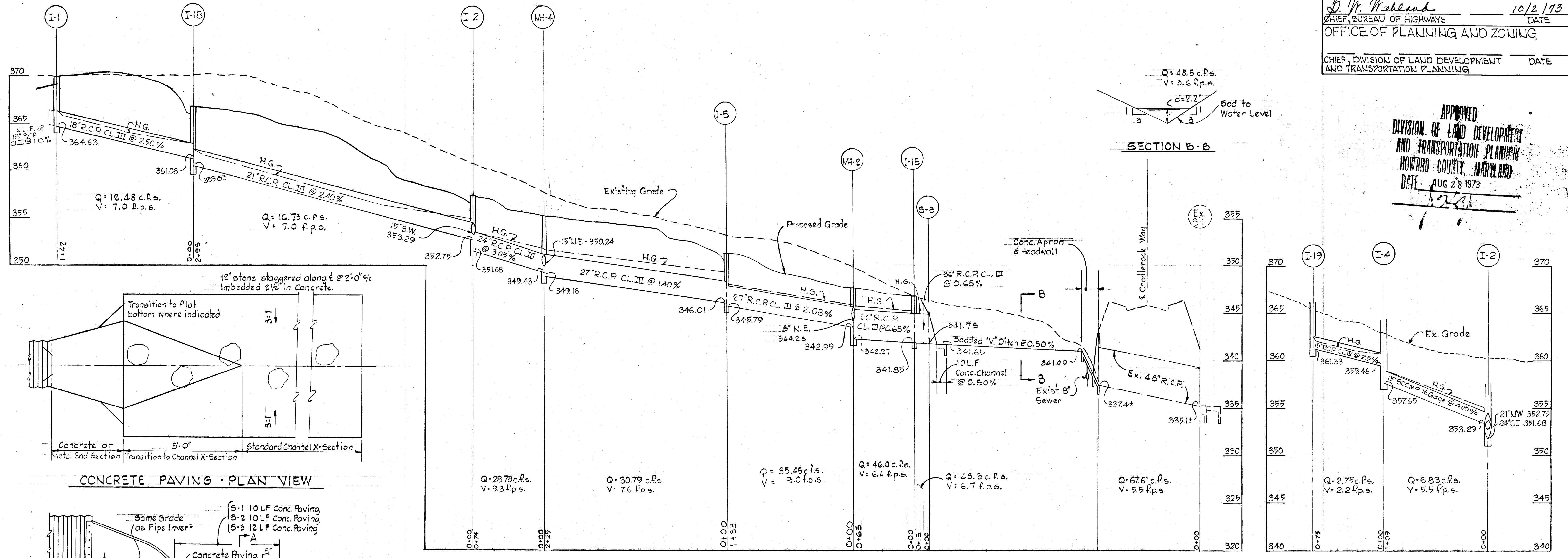
PROJECT TITLE
 PLAN AND PROFILE
 TALISMAN LANE

SCALE: As Shown DATE: SEPT. 20, 1973

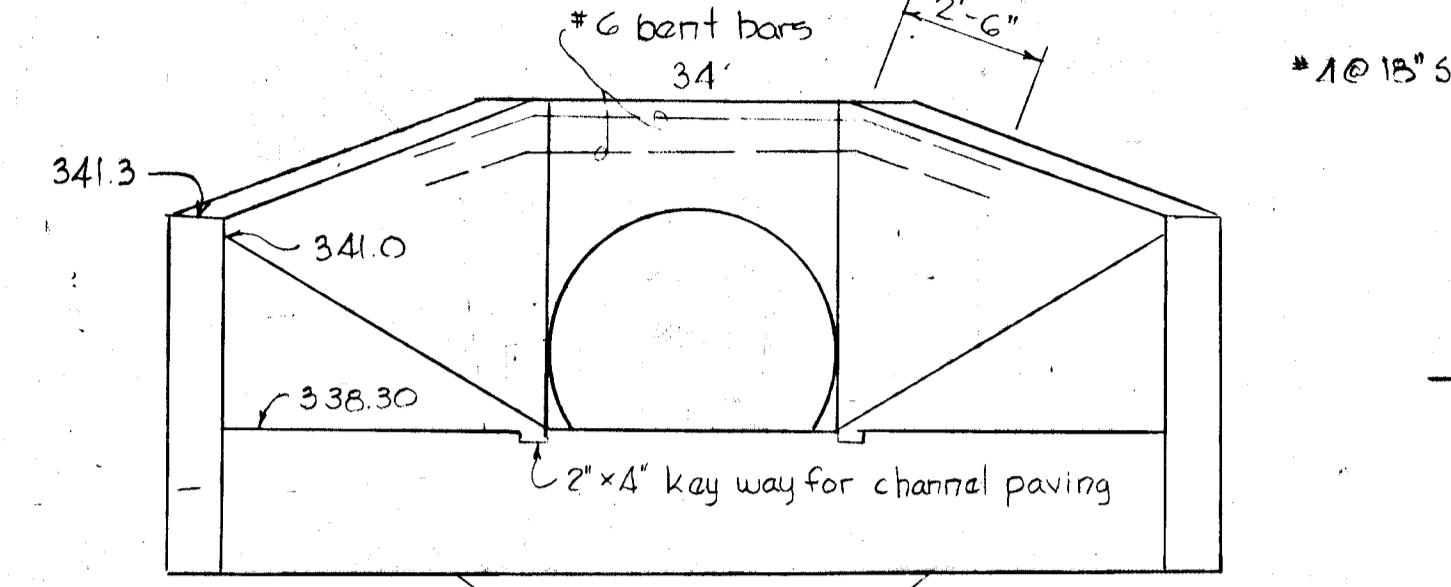
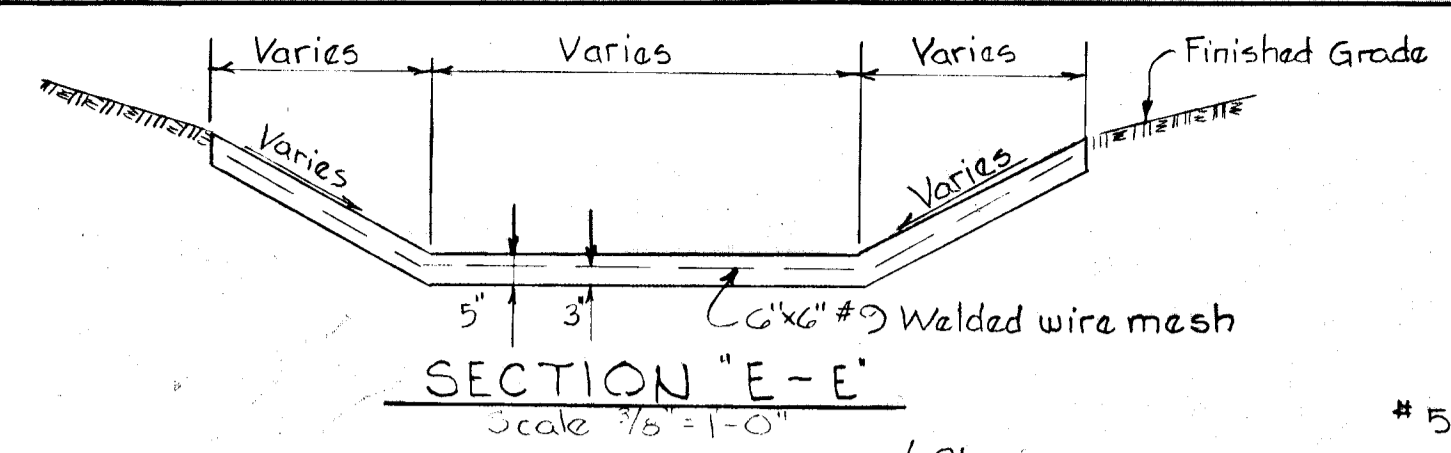
WHITMAN, REARDT & ASSOCIATES
 ENGINEERS
 BALTIMORE, MARYLAND 21202

Kenneth A. McCORD
 Registered Engineer
 No. 1974

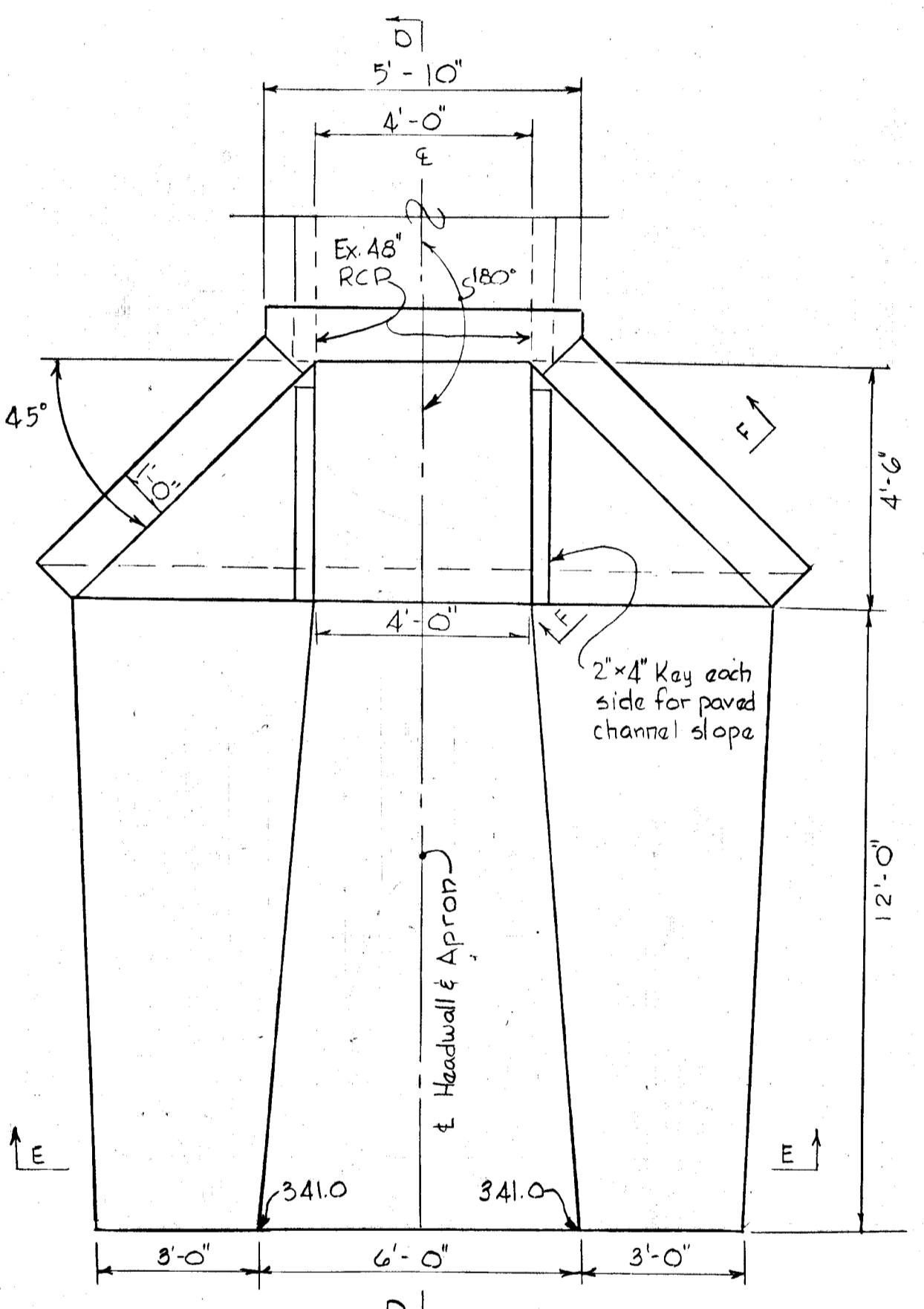
APPROVED
 DIVISION OF LAND DEVELOPMENT AND TRANSPORTATION PLANNING
 HOWARD COUNTY, MARYLAND
 DATE: AUG 28 1973
[Signature]



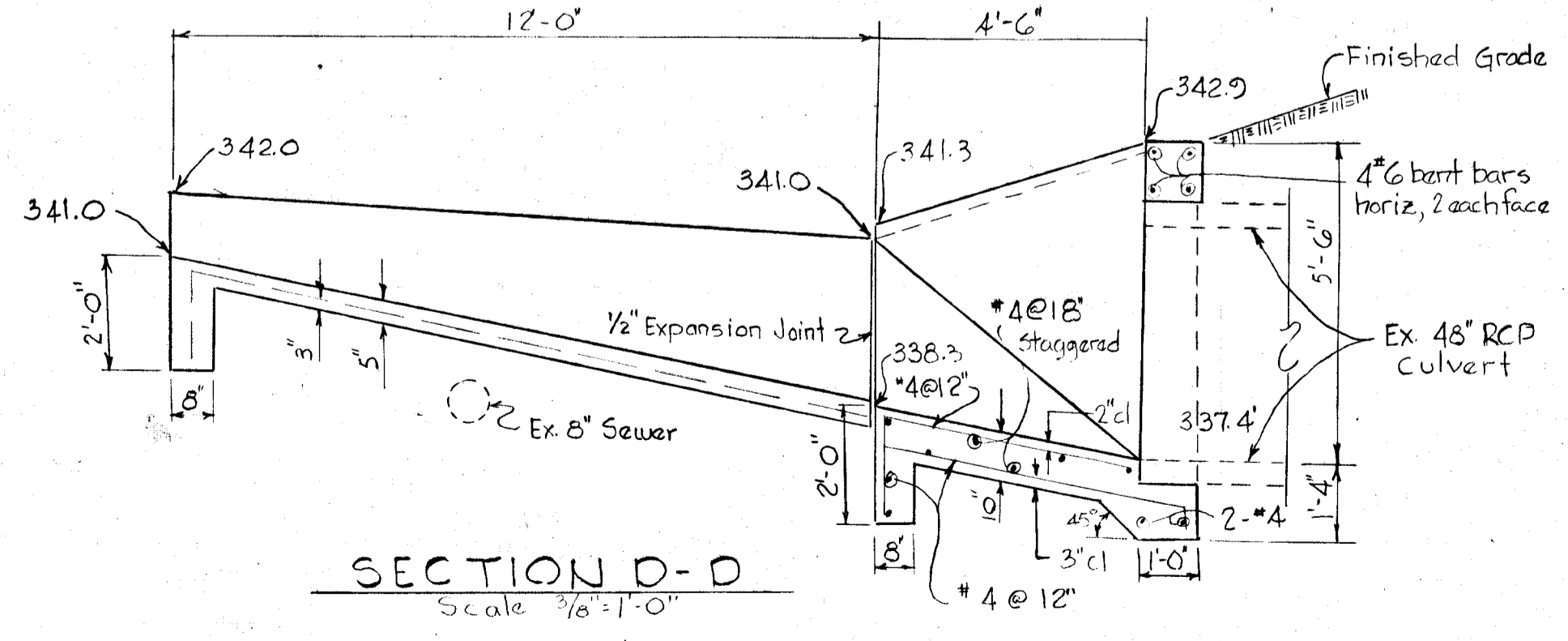
Rev. Date	Rev. No.	Revision Description
COLUMBIA 6 TH ELECTION DISTRICT HOWARD COUNTY, MARYLAND OWNER AND DEVELOPER HOWARD HOMES INC.		
PROJECT AREA VILLAGE OF OWEN BROWN Section 1, Area 1 - Resubdivision of Parcel 'C' Section 1, Area 2 - Resubdivision of Parcel 'B'		
STORM DRAIN PROFILES		
Scale: As Shown Date: SEPT. 20, 1973 WHITMAN, REQUARDT & ASSOCIATES ENGINEERS BALTIMORE, MARYLAND 21202		
<i>Kenneth A. McCord</i> KENNETH A. McCORD Registered Engineer No 1974		



FRONT ELEVATION OF HEADWALL



PLAN

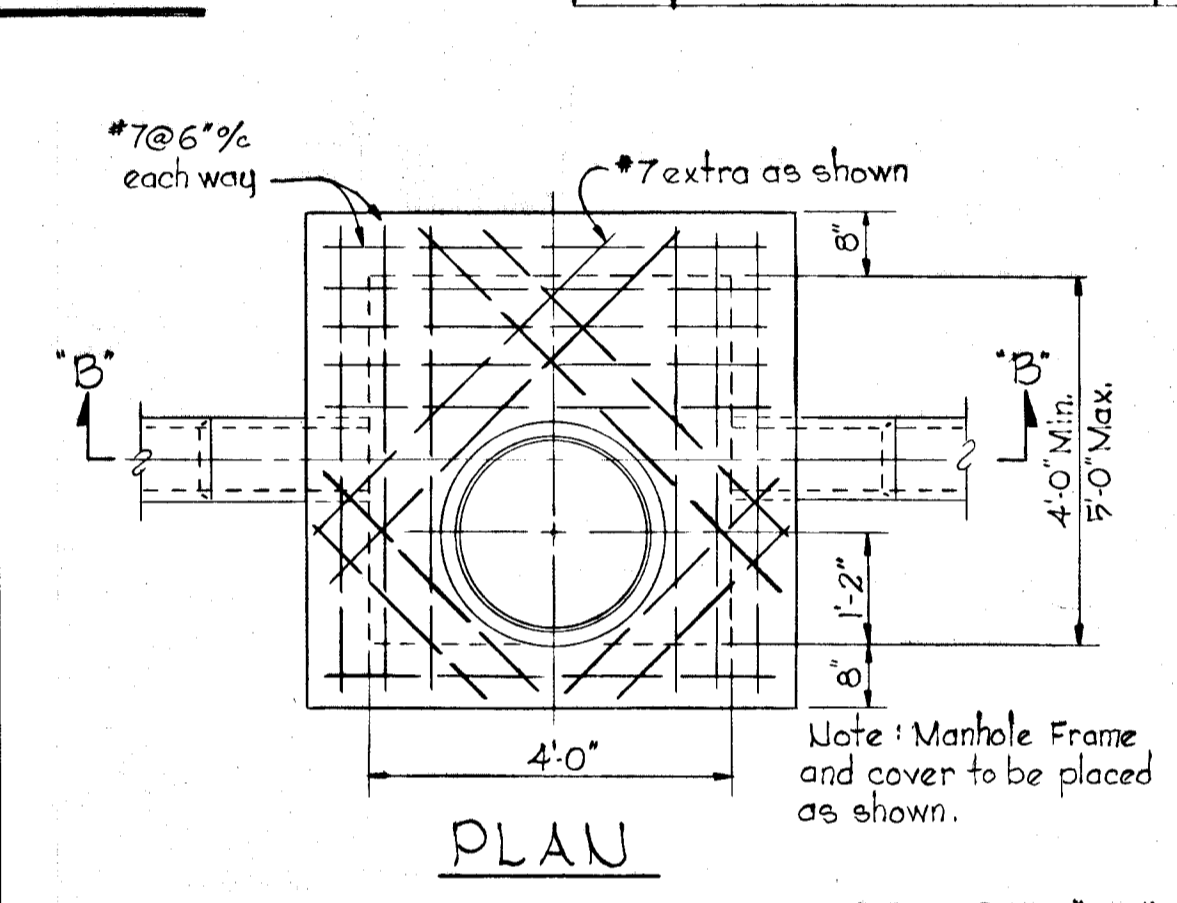


SECTION D-D

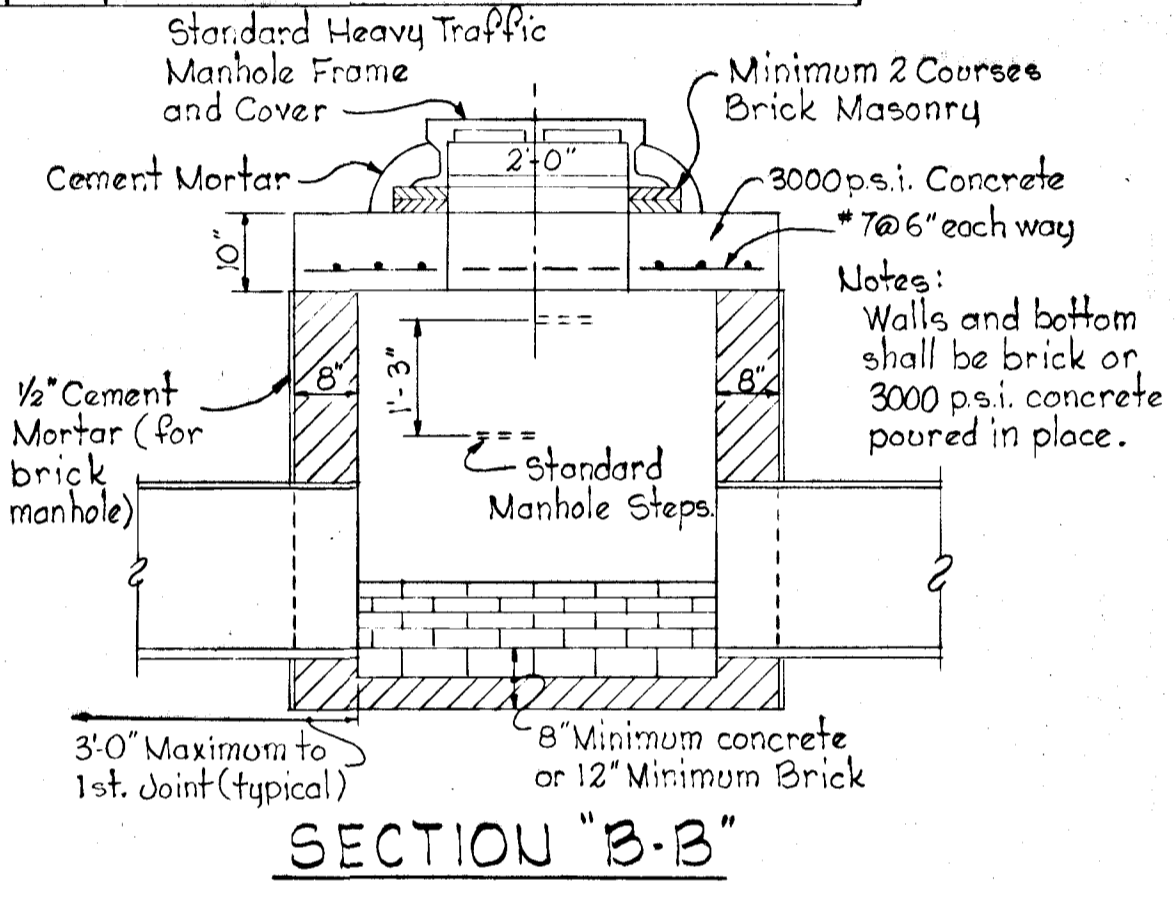
HEADWALL S-4 & CONCRETE APRON

STORM DRAIN STRUCTURE SCHEDULE			
No.	Type	Top El.	Inv. El.
I-1	"C" Type "D" Inlet 2.5x2.5'	360.81	364.63
I-18	"C" Type "D" Inlet 3.0x3.0'	364.83	359.83
I-2	"C" Type "D" Inlet 3.0x3.0'	357.50	351.68
I-3	Std A-5 Inlet width 2.5'	361.50	355.81
I-4	Std A-5 Inlet width 2.5'	364.50	357.65
I-5	"C" Type "D" Inlet 3.5x3.5'	351.28	345.79
I-6	Std A-10 Inlet width 2.5'	359.50	355.62
I-7	Std A-5 Inlet width 2.5'	356.53	352.09
I-8	Std A-5 Inlet width 2.5'	356.35	351.28
I-9	"C" Type "D" Inlet 2.5x2.5'	352.83	348.74
I-12	Std A-5 Inlet width 2.5'	356.00	351.25
I-13	Std A-5 Inlet width 2.5'	353.50	348.68
I-14	"C" Type "D" Inlet 2.5x2.5'	353.33	346.50
I-10	Std A-10 Inlet width 2.5'	351.77	347.48
I-11	Std A-10 Inlet width 2.5'	351.77	346.92
I-15	"C" Type "D" Inlet 3.7x3.7'	346.83	341.85
I-16	Std A-10 Inlet width	364.95	361.20
I-17	"C" Type "D" Inlet 2.5x2.5'	360.33	355.64
I-19	"C" Type "D" Inlet 2.5x2.5'	366.33	361.33
M-2	Type B Manhole See Detail this sheet	477.2	341.43
M-4	Type B Manhole See Detail this sheet	355.22	349.16
M-5	Special Manhole See Sheet 6 of 6	364.30	360.83

STORM DRAIN STRUCTURE SCHEDULE			
No.	Type	Top El.	Inv. El.
S-1	Metal End Section	345.92	
S-2	Metal End Section	341.60	
S-3	Conc. End Section	341.75	
S-4	Special Headwall & Apron	342.9	337.4

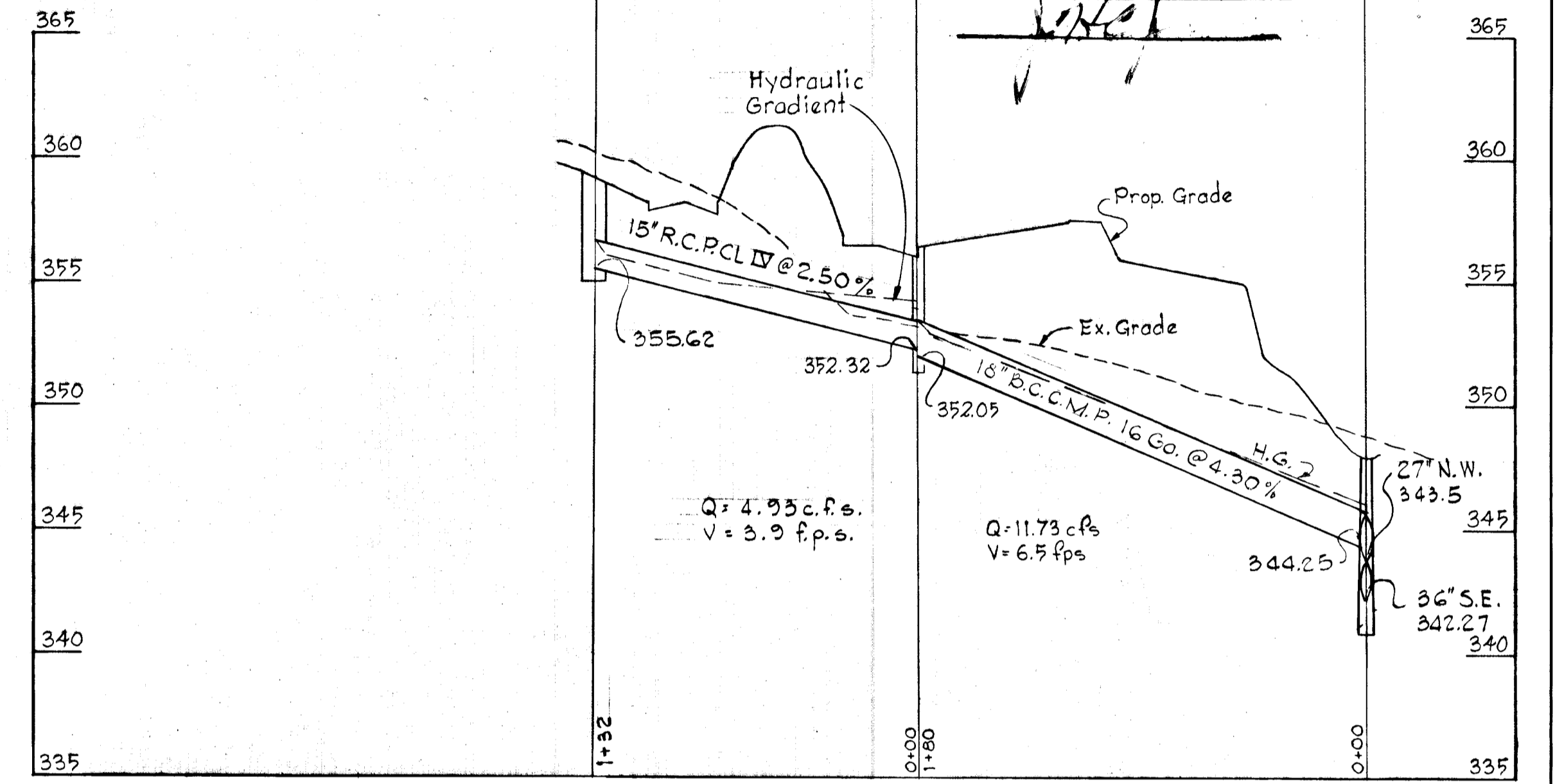
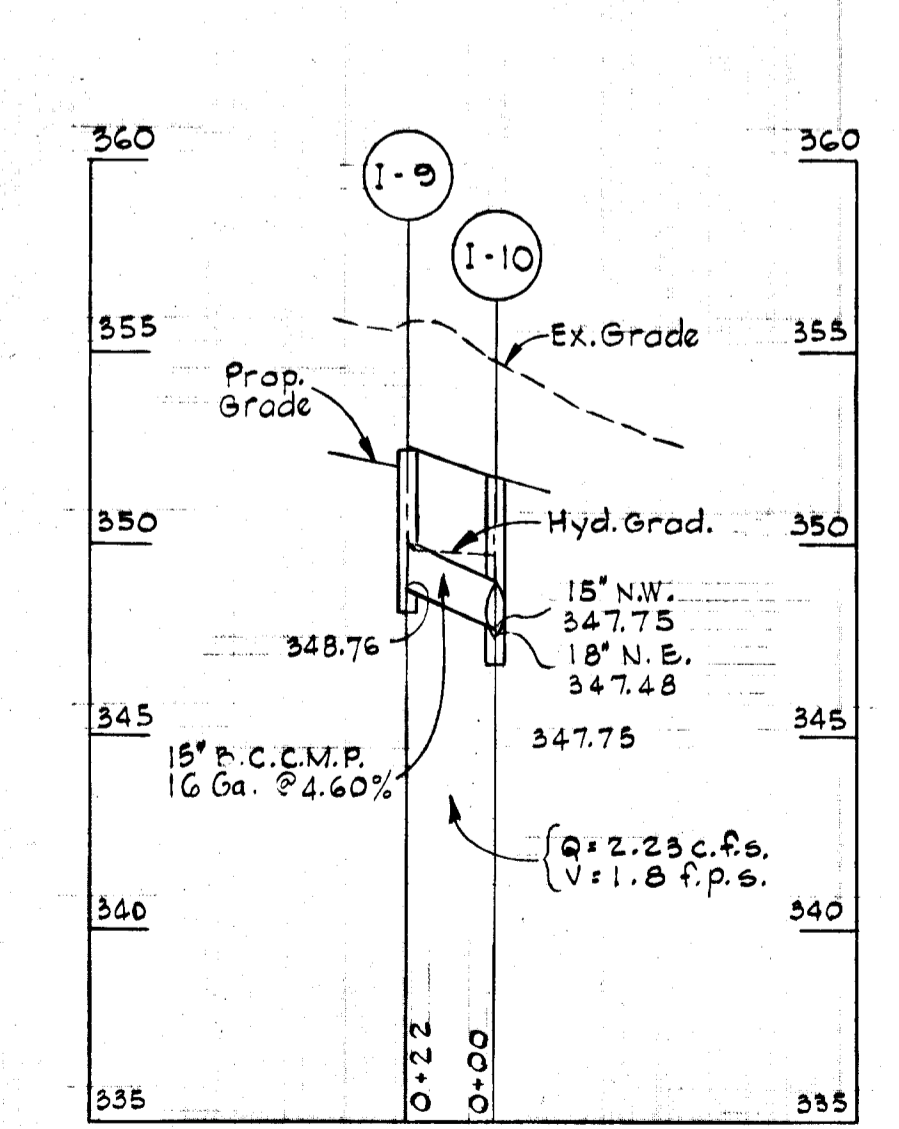
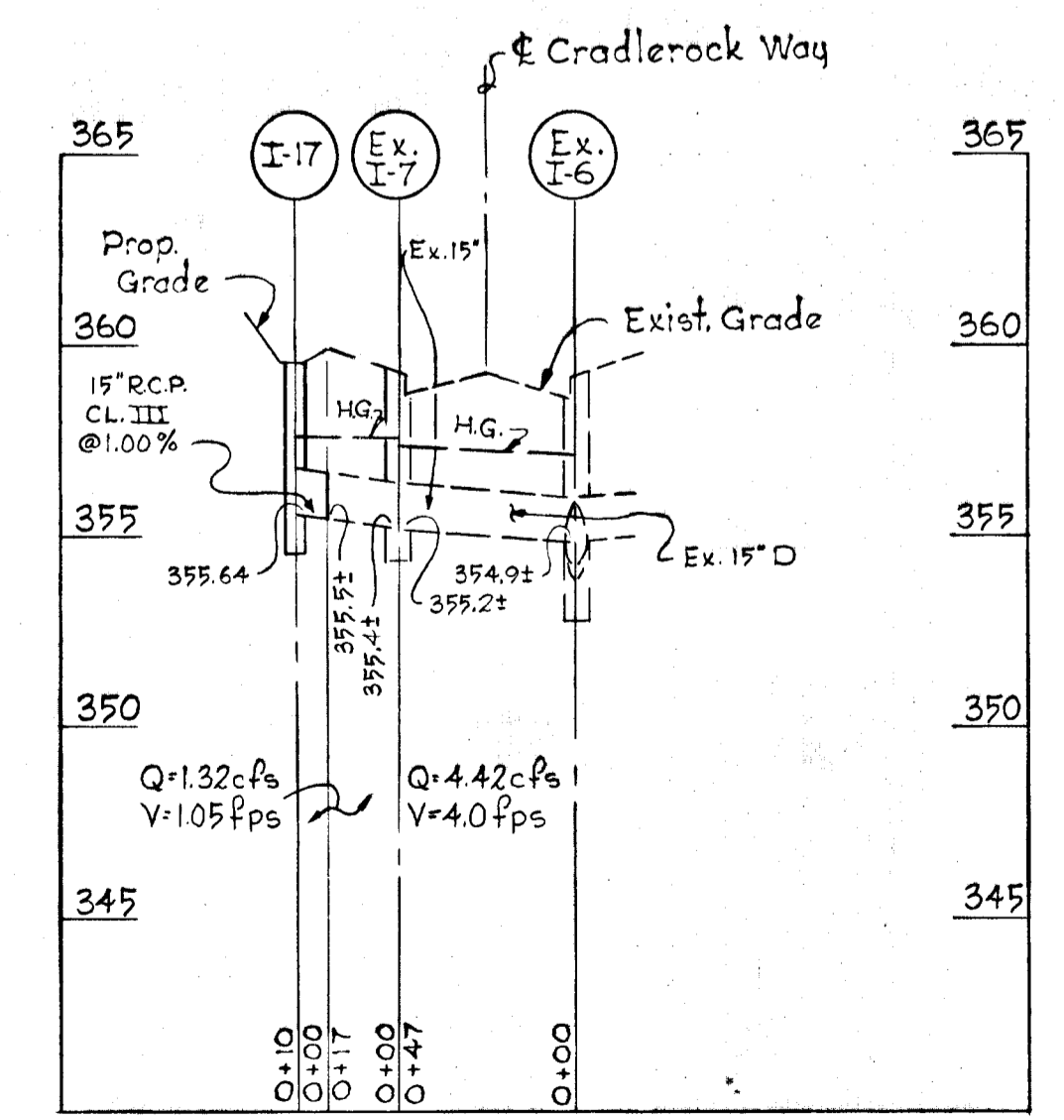
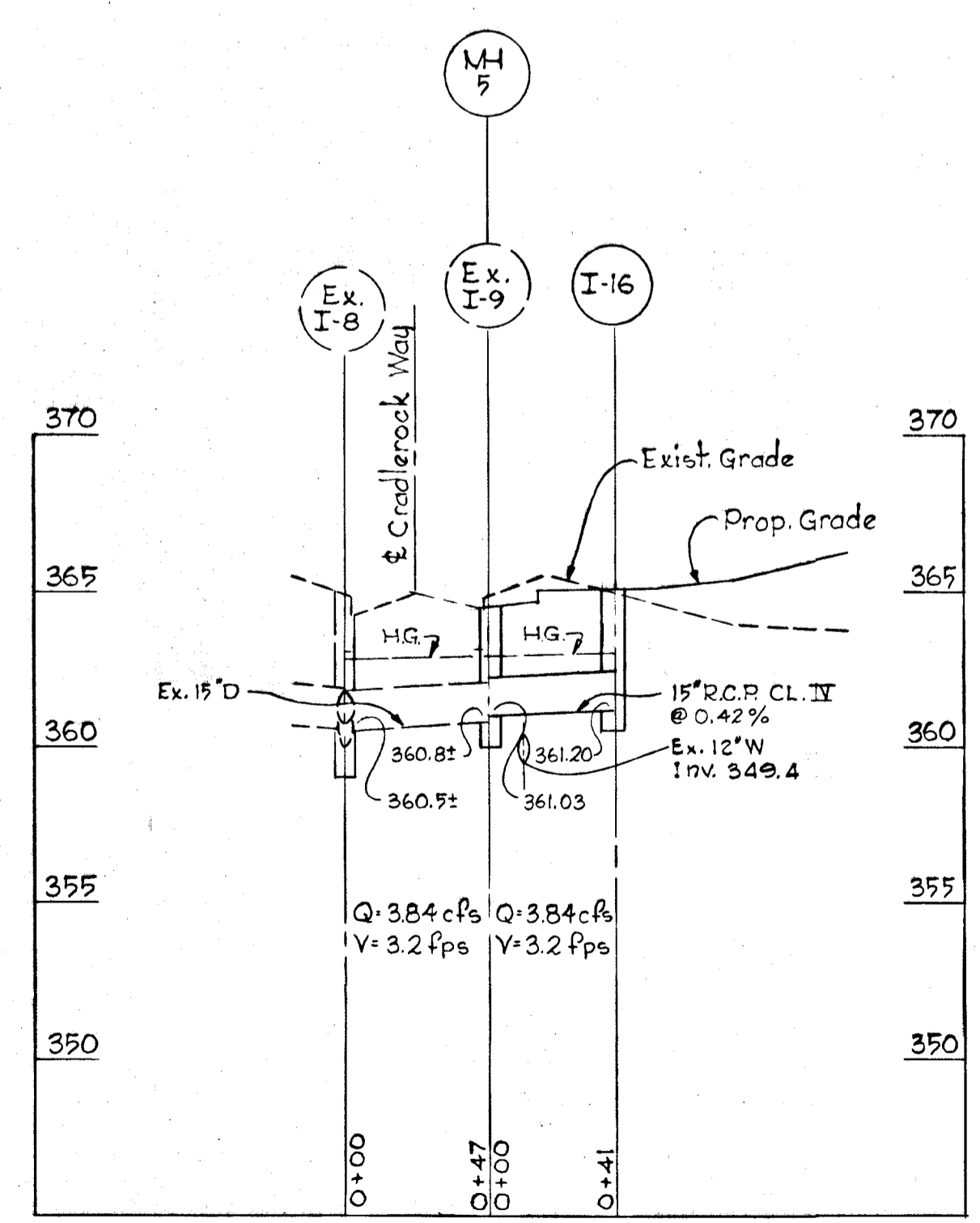


PLAN



SECTION "B-B"

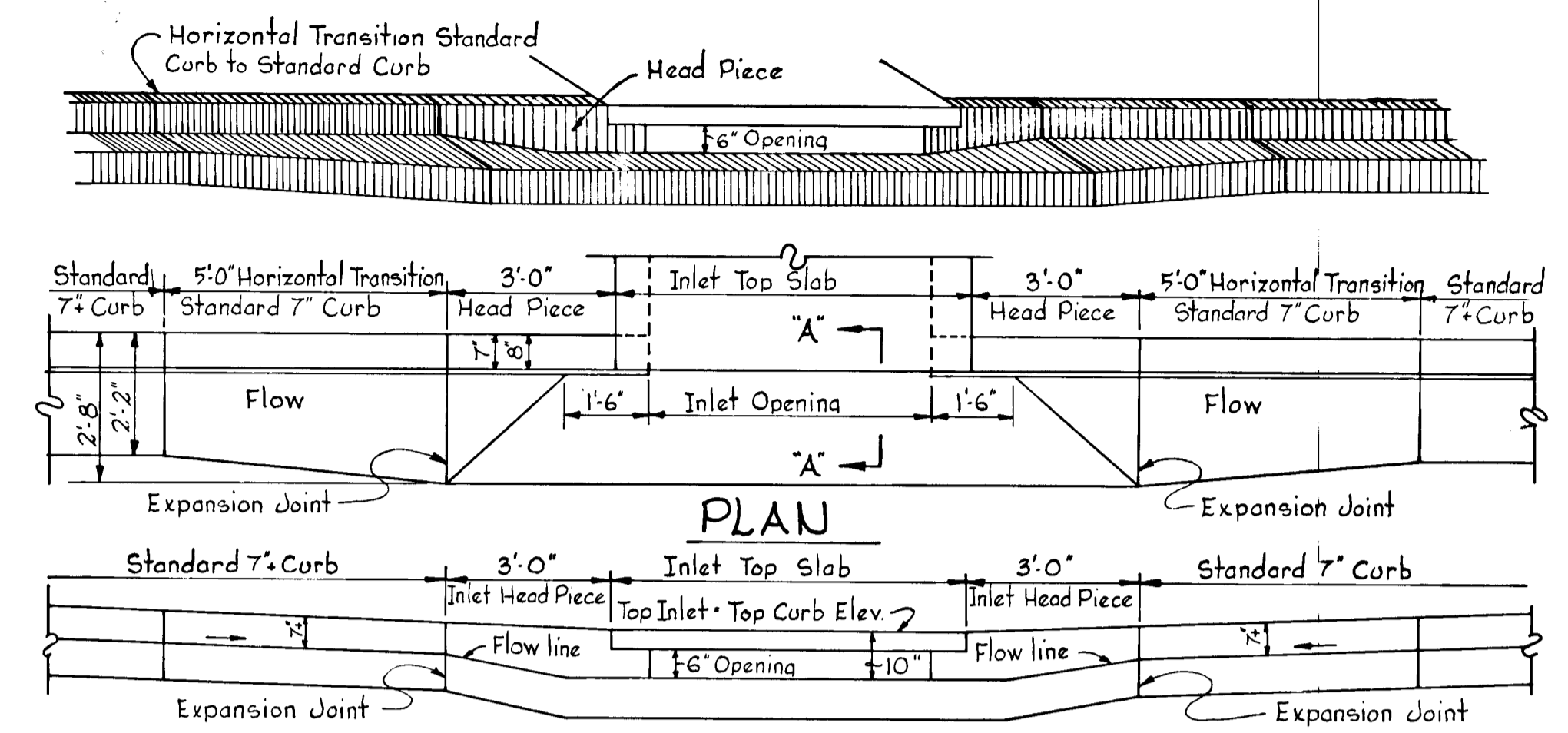
TYPE "B" MANHOLE
No Scale



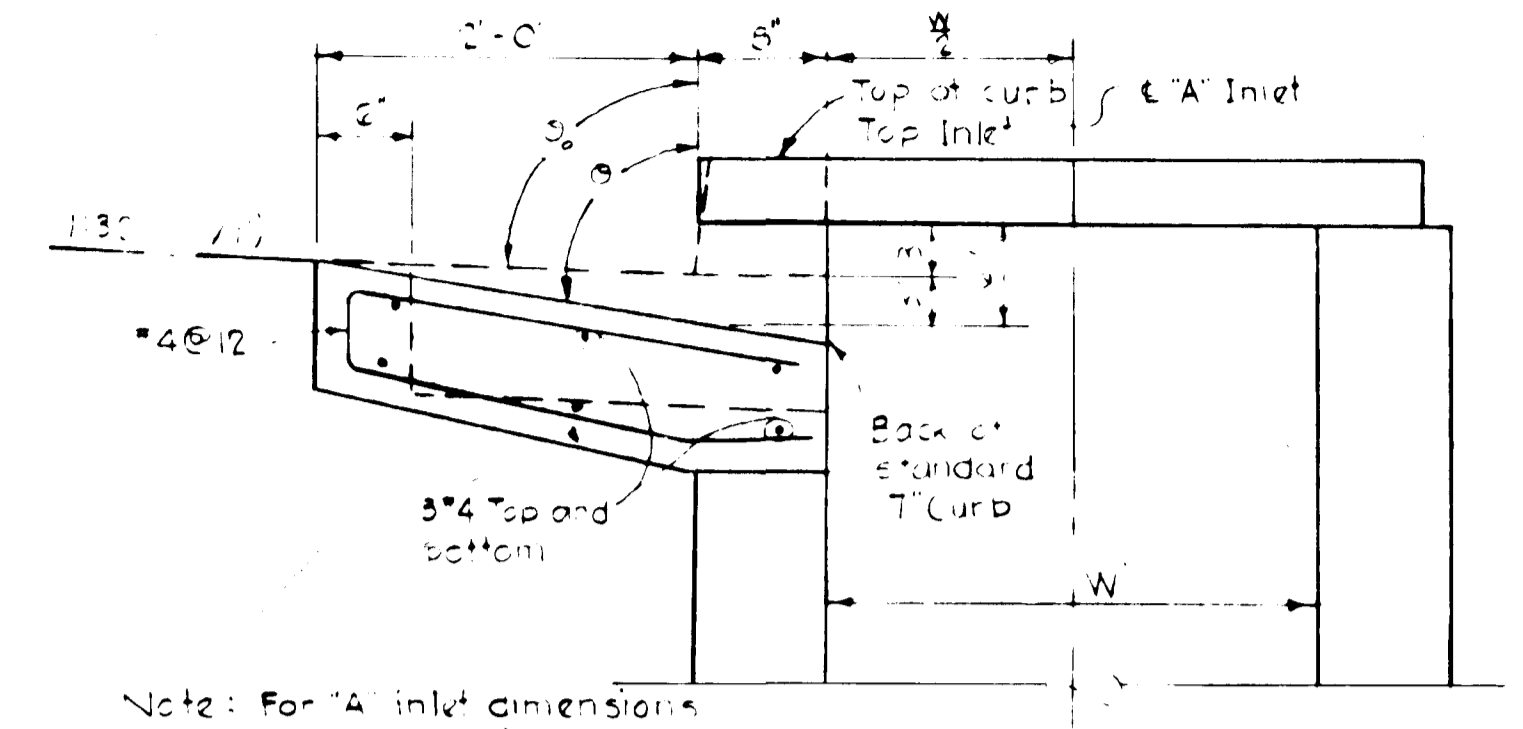
DEPARTMENT OF PUBLIC WORKS
 S. H. McLeod 10/2/73
 CHIEF, BUREAU OF HIGHWAYS DATE
 OFFICE OF PLANNING AND ZONING
 CHIEF, DIVISION OF LAND DEVELOPMENT AND TRANSPORTATION PLANNING DATE

APPROVED
 DIVISION OF LAND DEVELOPMENT AND TRANSPORTATION PLANNING
 HOWARD COUNTY, MARYLAND
 DATE AUG 28 1973

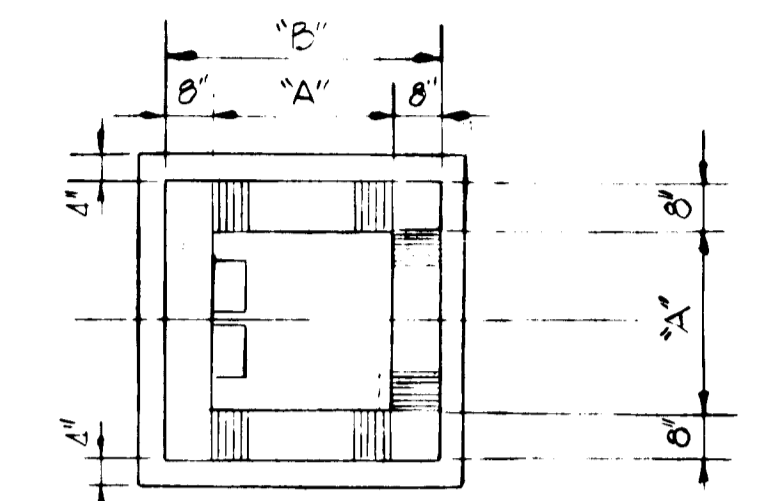
Rev. Date	Rev. No.	Revision Description
COLUMBIA 6 TH ELECTION DISTRICT HOWARD COUNTY, MARYLAND OWNER AND DEVELOPER HOWARD HOMES INC.		
PROJECT AREA VILLAGE OF OWEN BROWN Section 1, Area 1-Resubdivision of Parcel "C" Section 1, Area 2-Resubdivision of Parcel "B"		
PROJECT TITLE STORM DRAIN DETAILS, PROFILES AND STRUCTURE SCHEDULE		
Scale: As Shown Date: SEPT. 20, 1973		
WHITMAN, REQUARDT & ASSOCIATES ENGINEERS BALTIMORE, MARYLAND 21202		
Kenneth A. McCord KENNETH A. McCORD Registered Engineer No. 1974		



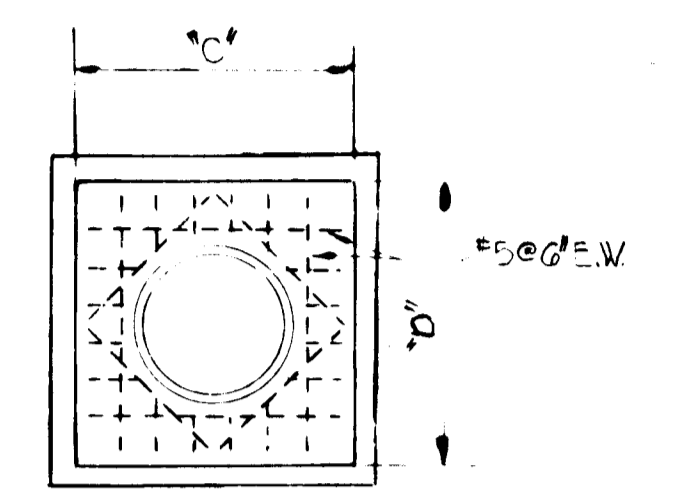
SECTION ALONG FLOW LINE
SUMPED "A" INLETS - STANDARD CURB
 (INLETS I-3 & I-4)



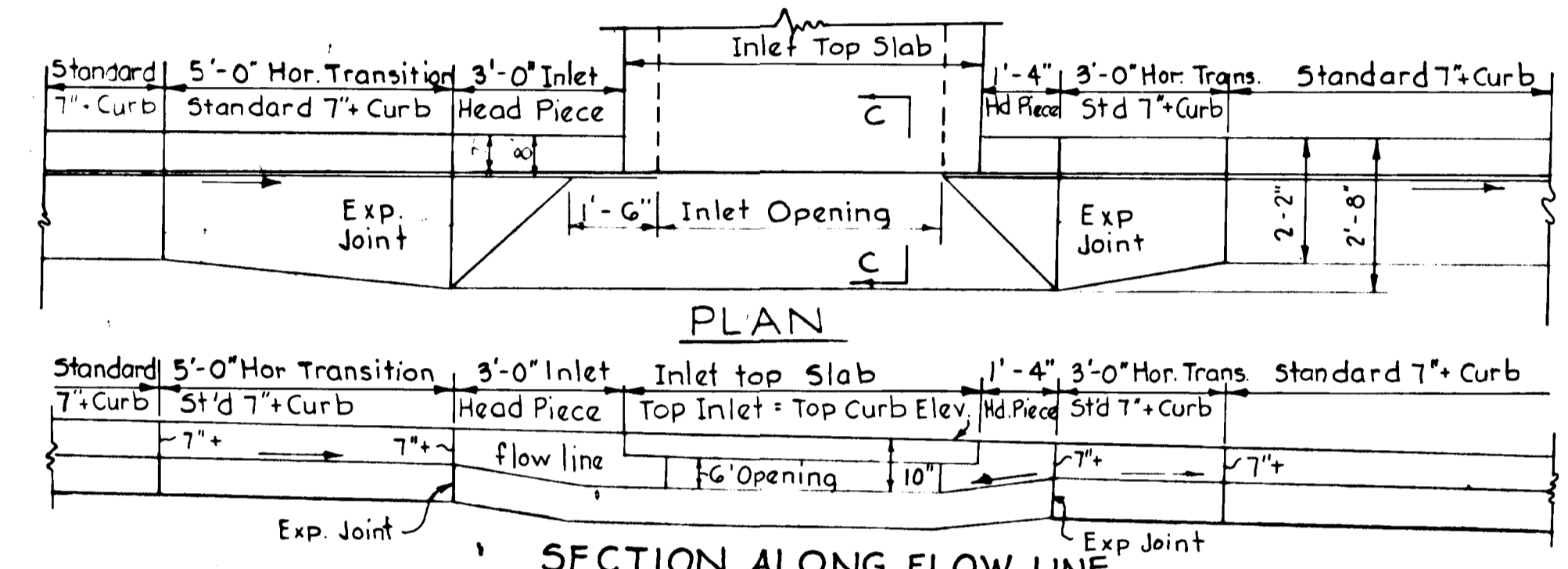
"A" INLET STANDARD CURB



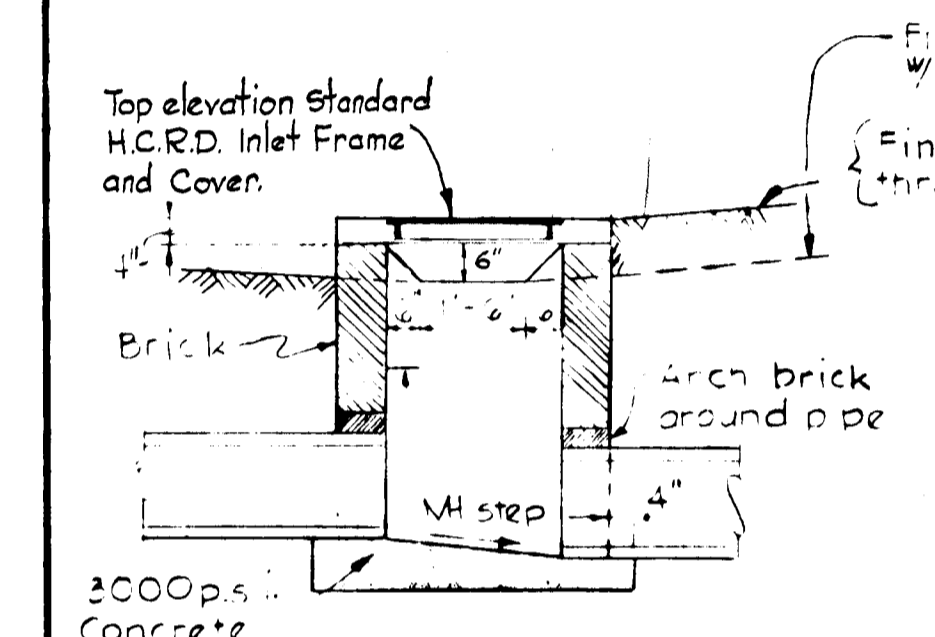
PLAN (SLAB REMOVED)



PLAN (CONCRETE SLAB)



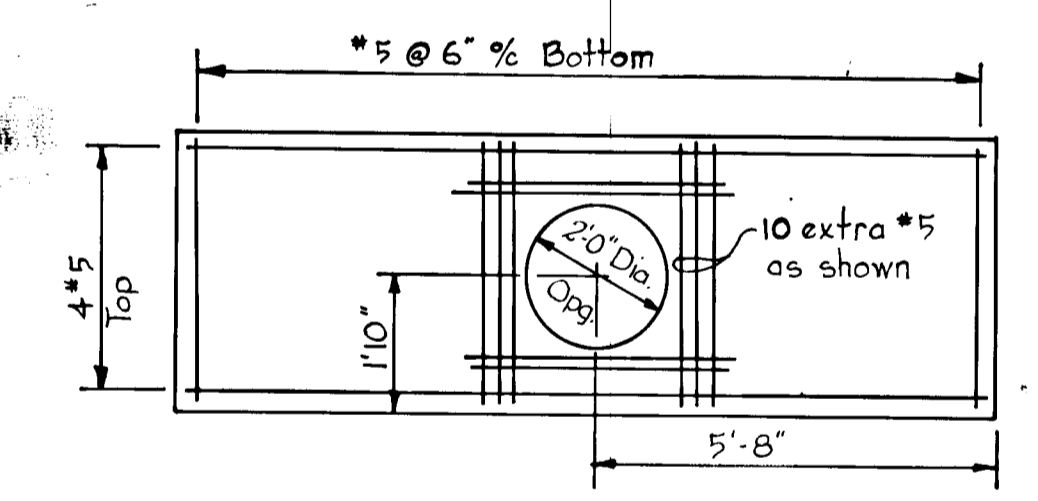
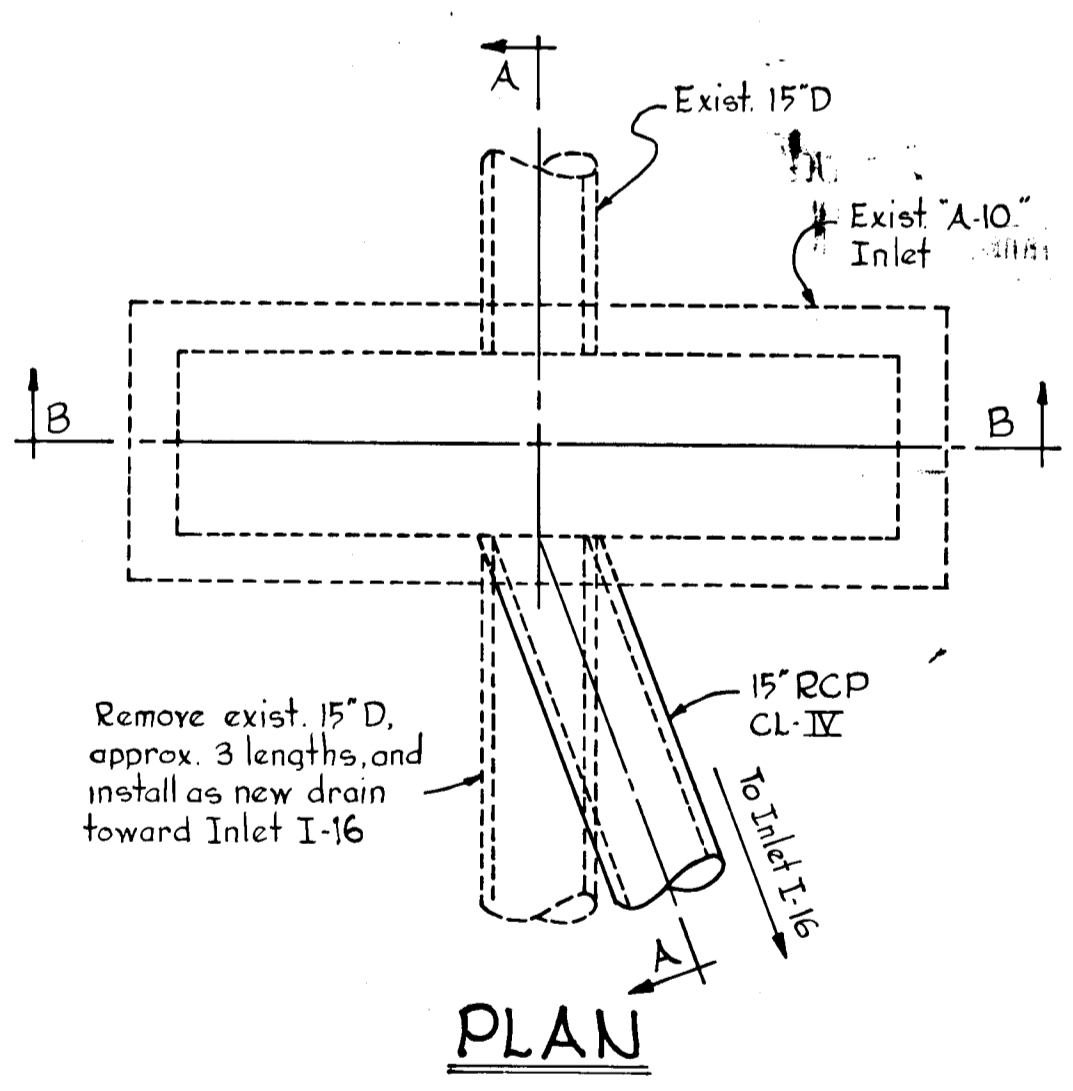
SECTION ALONG FLOW LINE
"A" INLETS I-8, I-10, I-11 and I-16



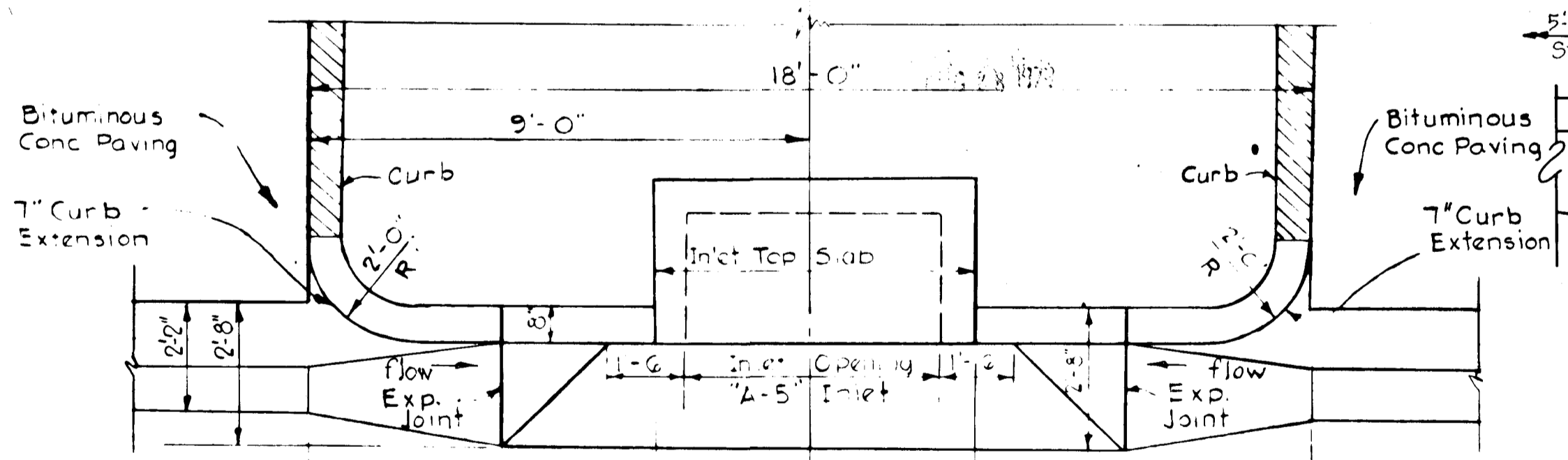
SECTION

C TYPE "D" INLET
 No Scale

INLET	A	B	C	D
I-1	2'-6"	3'-10"	3'-10"	3'-10"
I-18	3'-0"	4'-4"	4'-4"	4'-4"
I-2	3'-0"	4'-4"	4'-4"	4'-4"
I-5	3'-6"	4'-10"	4'-10"	4'-10"
I-14	2'-6"	3'-10"	3'-10"	3'-10"
I-17	2'-6"	3'-10"	3'-10"	3'-10"
I-9	2'-6"	3'-10"	3'-10"	3'-10"
I-15	3'-8"	5'-0"	5'-0"	5'-0"



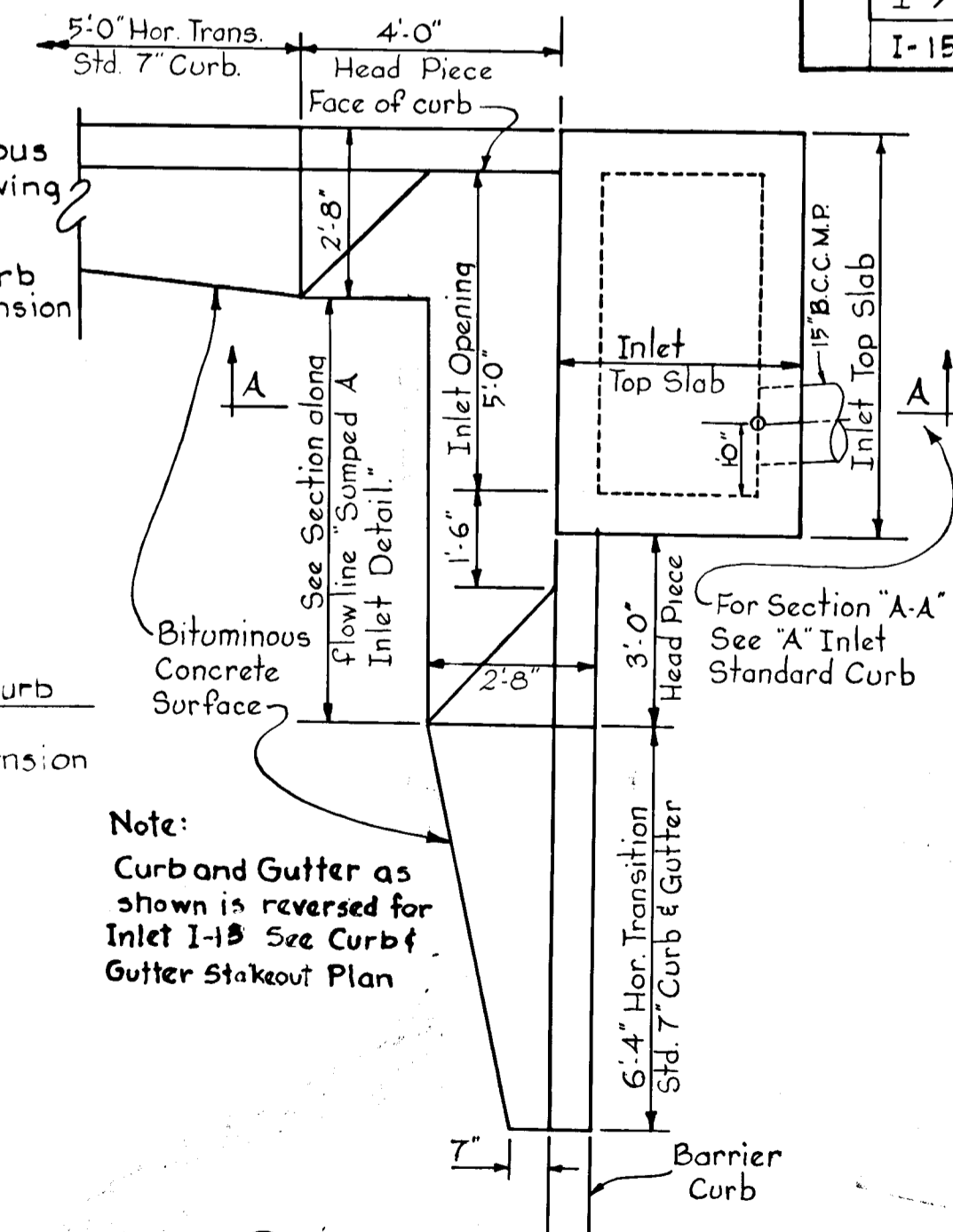
PLAN - CONCRETE SLAB



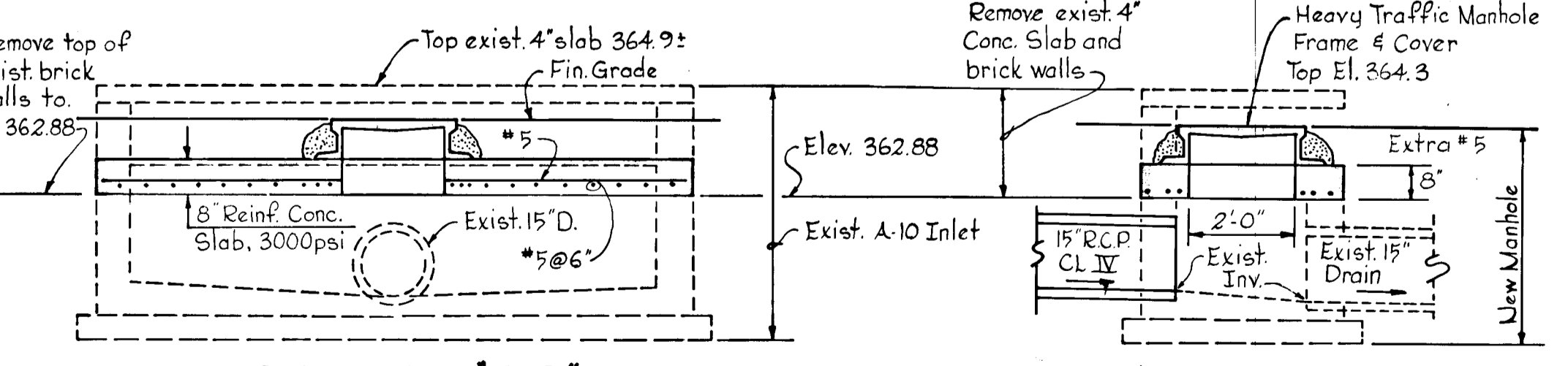
PLAN

SECTION ALONG FLOW LINE
SUMPED "A" INLET I-7

Scale 3/8" = 1'-0"



DETAIL I-12 & PARKING AREA
CURB & GUTTER
 Scale 3/8" = 1'-0"



SECTION "AA"

SECTION "BB"

DETAIL - MANHOLE MH5
 Scale: 3/8" = 1'-0"

Rev. Date	Rev. No	Revision Description
COLUMBIA 6th ELECTION DISTRICT HOWARD COUNTY, MARYLAND OWNER AND DEVELOPER HOWARD HOMES INC.		
PROJECT AREA VILLAGE OF OWEN BROWN Section 1, Area 1 - Resubdivision of Parcel "C" Section 1, Area 2 - Resubdivision of Parcel "B"		
PROJECT TITLE STORM DRAIN AND CURB AND GUTTER DETAILS		
SCALE: As Shown		DATE: SEPT. 1973
WHITMAN, REQUARDT & ASSOCIATES ENGINEERS BALTIMORE, MARYLAND 21202		
KENNETH A. McCORD Registered Engineer No. 1974		