

DEPARTMENT OF PUBLIC WORKS:
S. H. McLeod 6/26/73
 CHIEF, BUREAU OF HIGHWAYS DATE

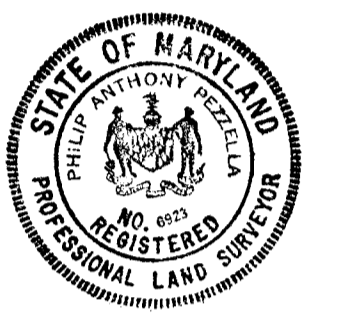
ENGINEERING & PLANNING:
P. A. Pezella 6/19/73
 CHIEF, DIVISION OF HIGHWAY DEVELOPMENT & TRANSPORTATION PLANNING DATE

RECEIVED
 JUN 28 1973
 FEDERAL ENGINEERING

APPROVED
 DIVISION OF LAND DEVELOPMENT
 AND TRANSPORTATION PLANNING
 HOWARD COUNTY, MARYLAND
 DATE 6/19/73

ENGINEERING - PLANNING - SURVEYING
 BRUNER ASSOCIATES
 44 COTT CITY, MD.

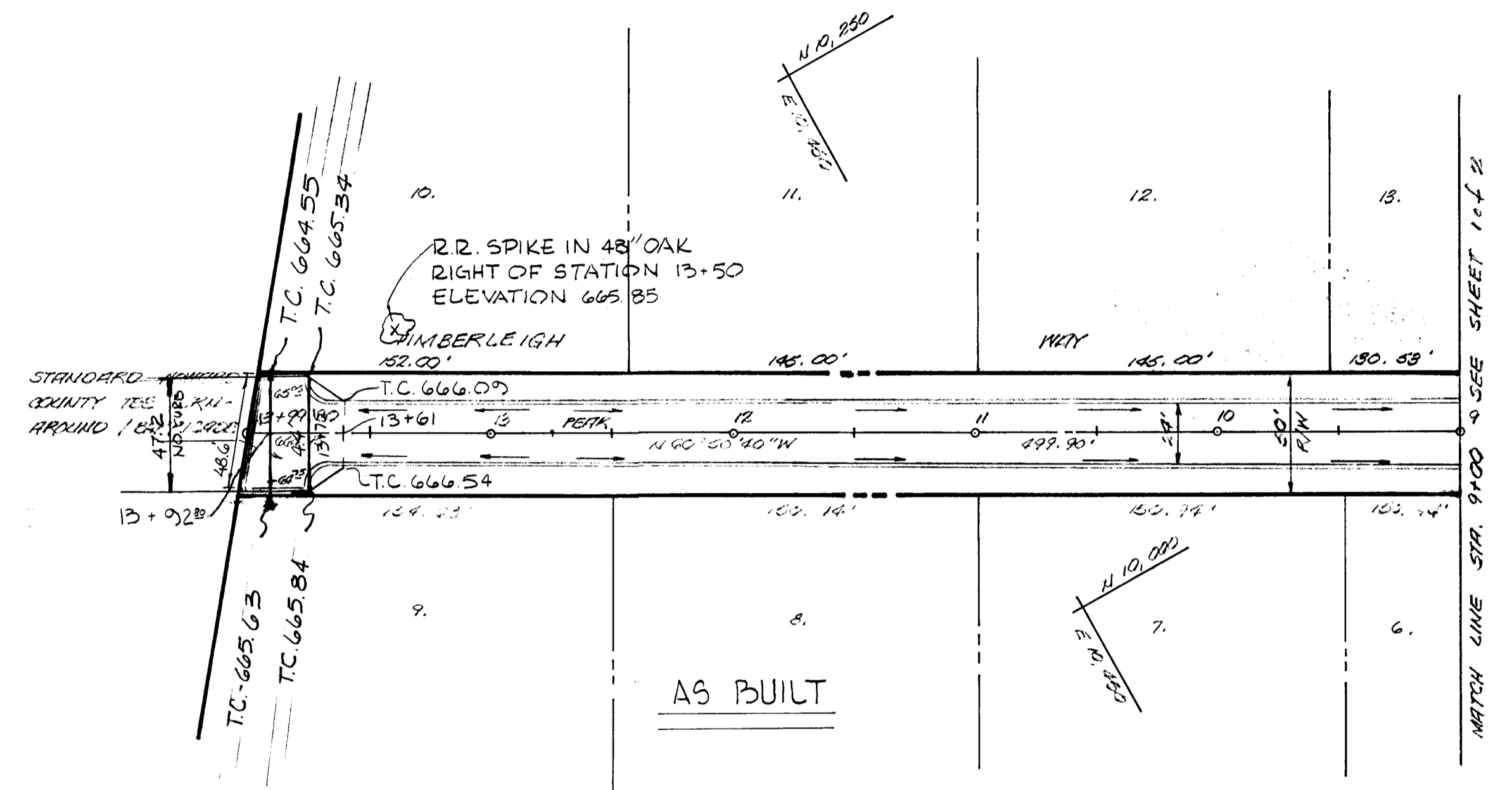
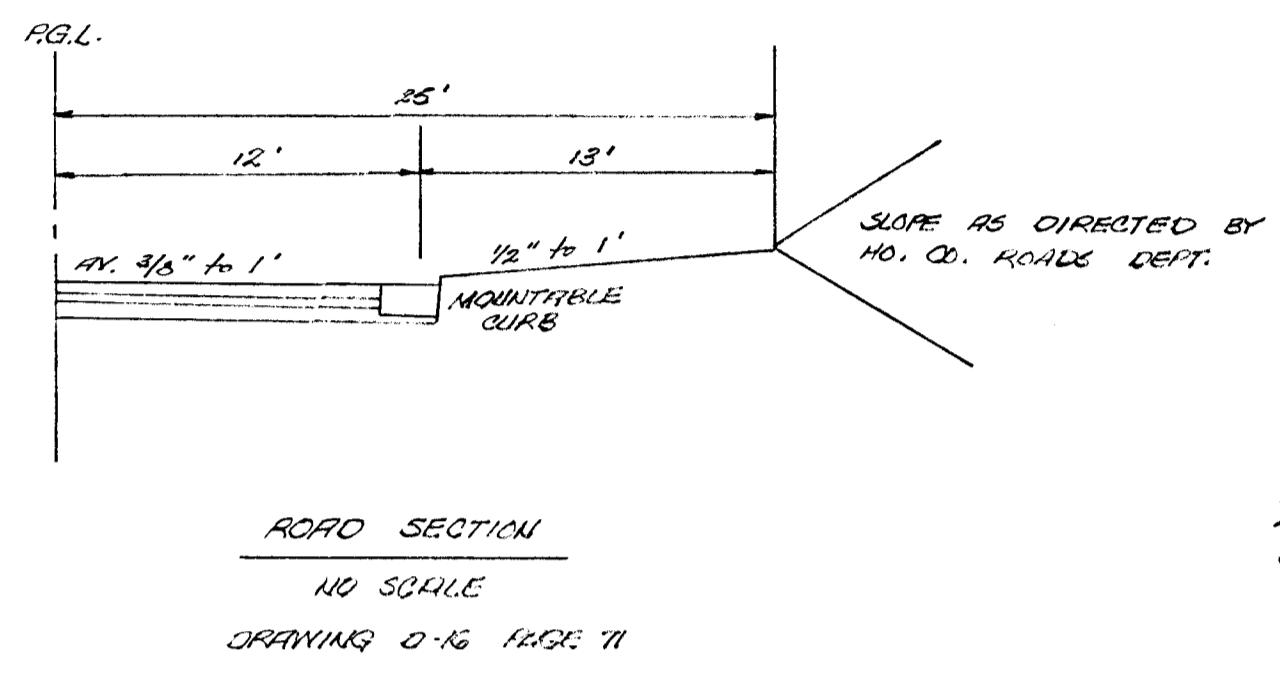
Philip A. Pezella 5/18/73
 PHILIP A. PEZELLA REGISTERED SURVEYOR NO. 6923 DATE
 ASSOCIATE



"TIMBERLEIGH VILLAGE"
 SECTION 1

4TH ELECTION DISTRICT
 HOWARD COUNTY, MARYLAND
 ROAD ADMIN & MAINTENANCE DIVISION

~~APPROVED
 PLANNING DIVISION
 OF HOWARD COUNTY
 DATE~~



AS BUILT

SCALE: 1" = 50'

DATE	
BY	
DESIGNED	
PLANNED	
CHECKED	
BY	
NO.	

DATE	
BY	
DESIGNED	
PLANNED	
CHECKED	
BY	
NO.	

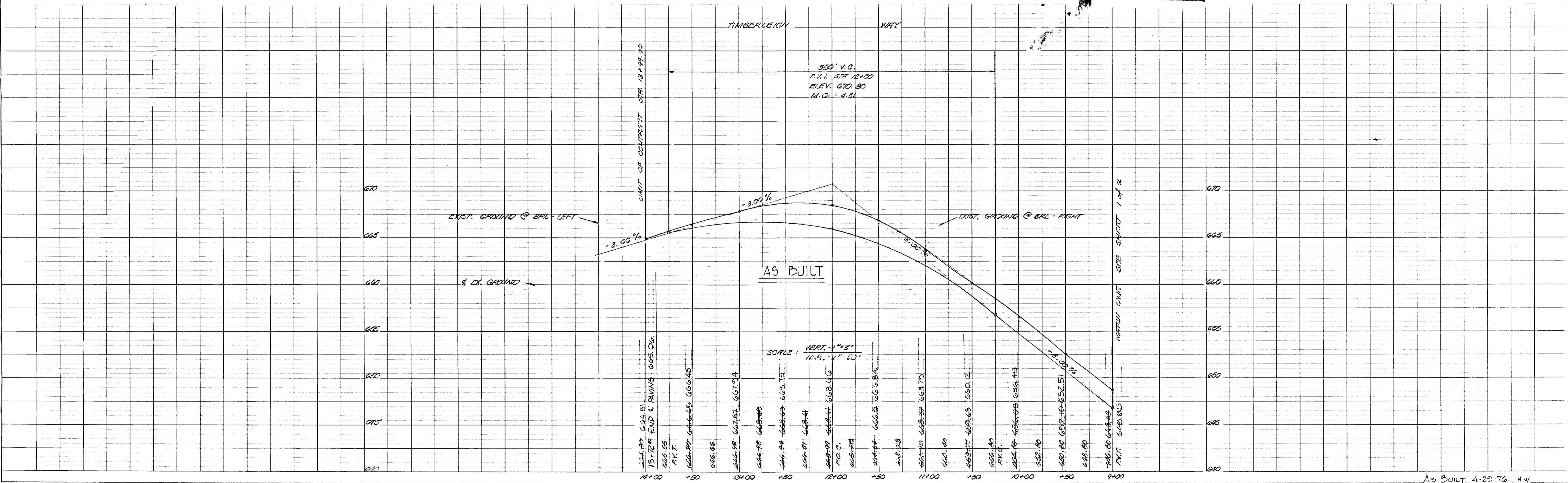


PLATE 1 PLAN PROFILE G.P. R.A.S.E. STANDARD
 100% RAG PAPER, MADE AND PRINTED IN U.S.A.
 EUGENE DIETZGEN CO.

AS BUILT 4-25-76 M.W.

F-73-87