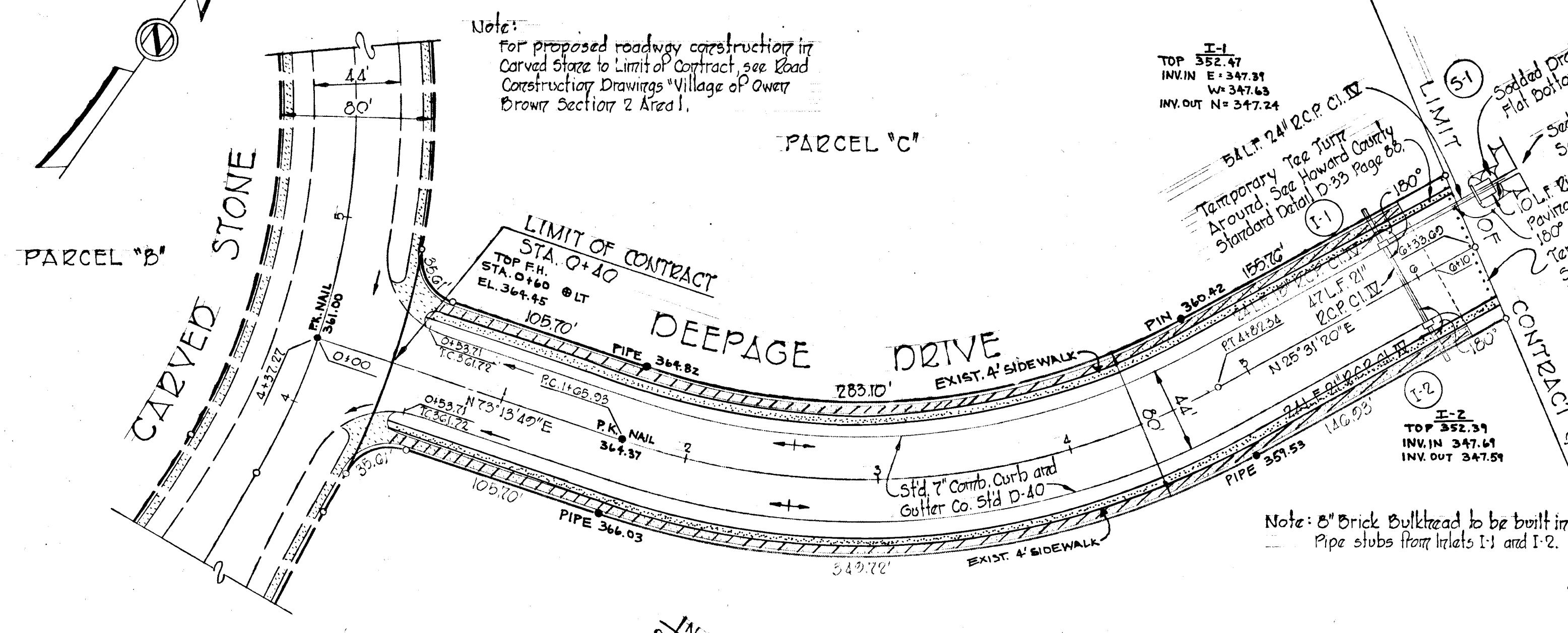


STORM DRAIN STRUCTURE SCHEDULE				SEE PLAN & PROFILE FOR ELEVATIONS
NO.	TYPE	TOP EL.	INVERT	LOCATION
5-1	Standard Support Wall-Drainage D-48	345.52	344.44	E. Endwall 23.25' Left of Sta. 0+47
1-1	Δ 5 Inlet width: 2.5'	347.24	346.46	E. Inlet 23.25' Left of Sta. 5+23
1-2	Δ 5 Inlet width: 2.5'	347.56	347.56	E. Inlet 23.25' Right of Sta. 5+23

For Storm Drain Profiles see Sheet 4 of 5.

DEPARTMENT OF PUBLIC WORKS
S. H. Newland 4/3/73
 CHIEF, BUREAU OF HIGHWAYS DATE
 OFFICE OF PLANNING AND ZONING
 CHIEF, DIVISION OF LAND DEVELOPMENT AND TRANSPORTATION PLANNING DATE



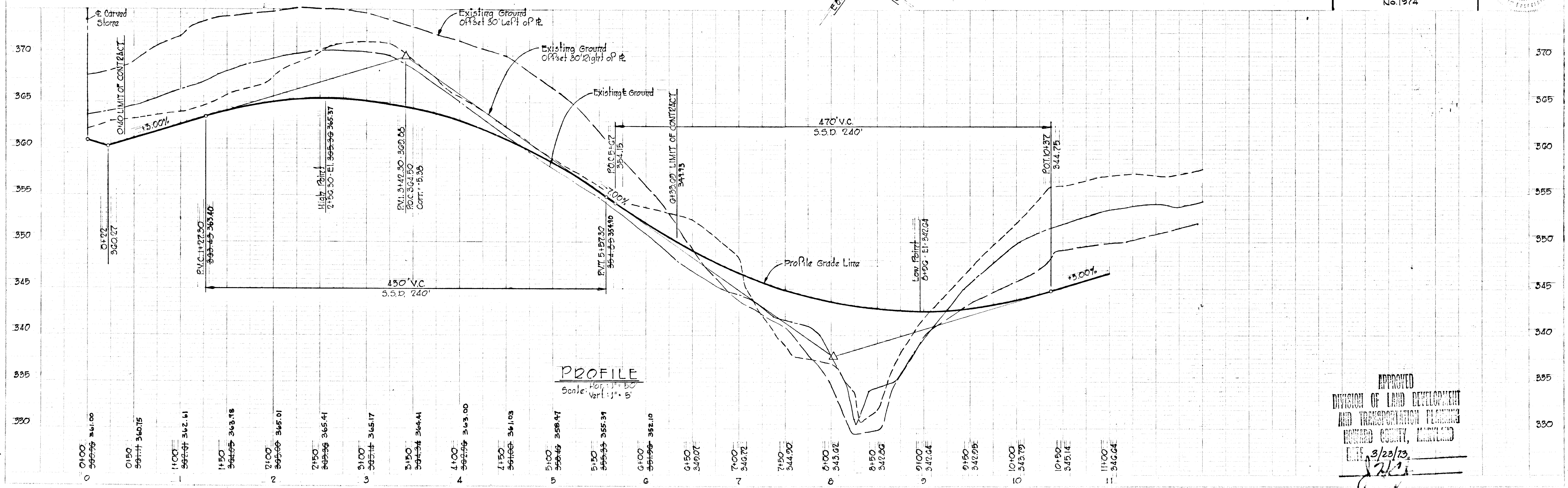
Note:
 For proposed roadway construction in Carved Stone to Limit of Contract, see Road Construction Drawings "Village of Owen Brown Section 2 Area 1".

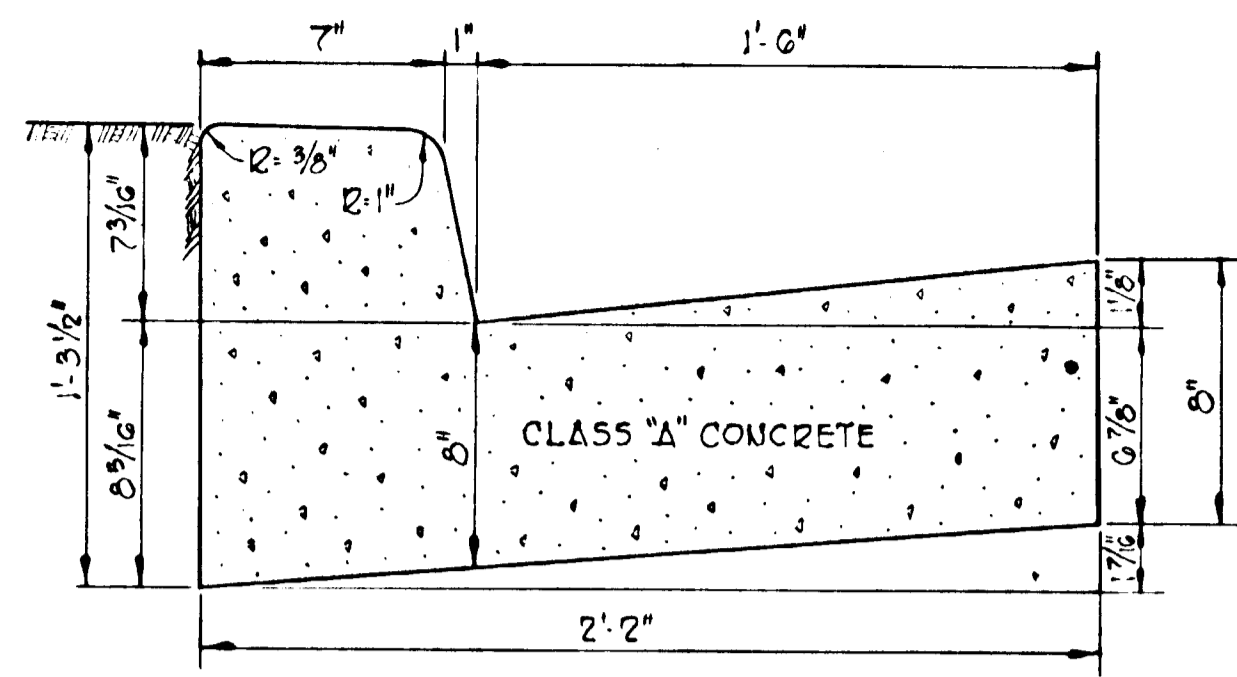
Note:
 For work beyond Limit of Contract (paving) See Sediment Control Plan Street No. 3

Note:
 For Estimate of P Quantities, see Title Sheet, Street 1 of 5.

CURVE DATA
 PC: 1+05.23 To PT: 4+87.34
 Δ: 47°42'28" Tan: 168.03'
 R: 360.00' Ctr: 307.58'
 Arc: 316.41' Drg: 549°00'55"W

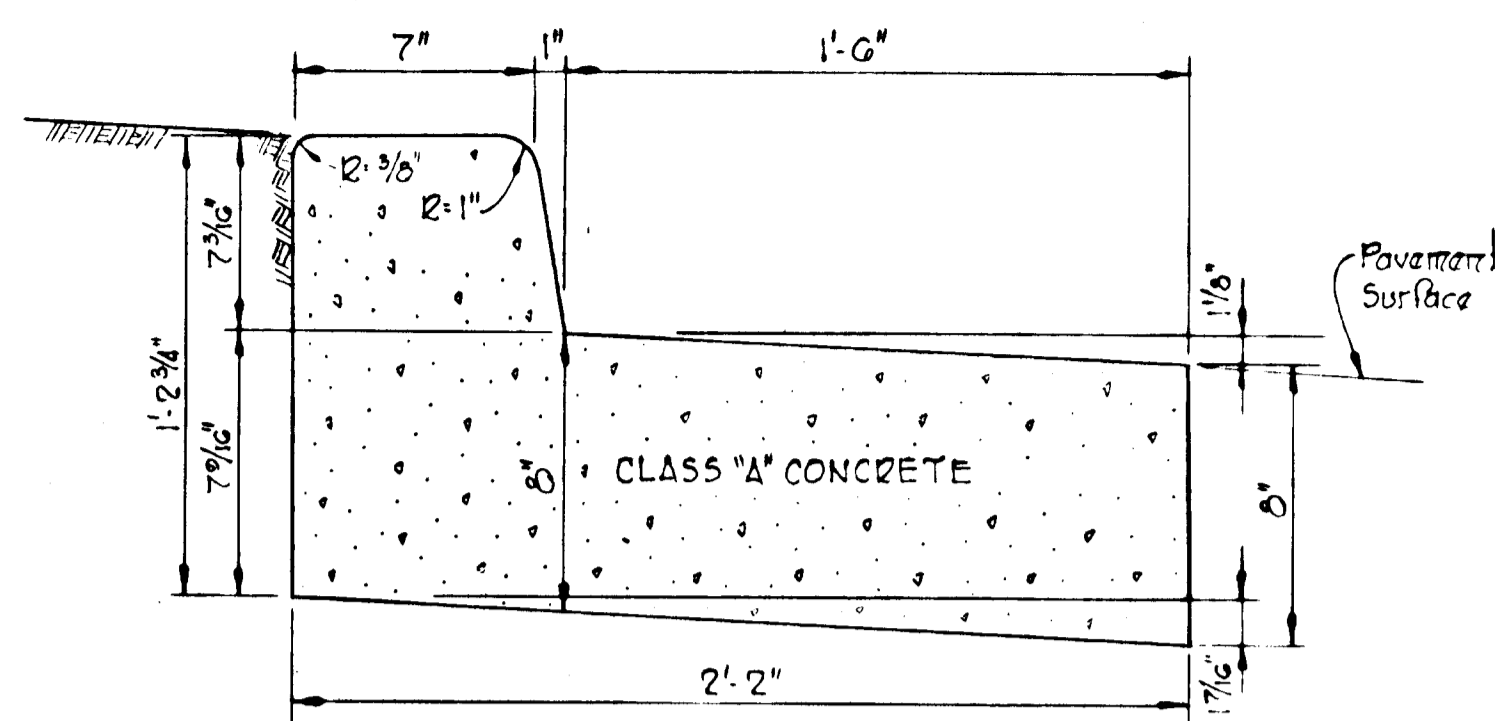
PLAN
 Scale: 1" = 50'





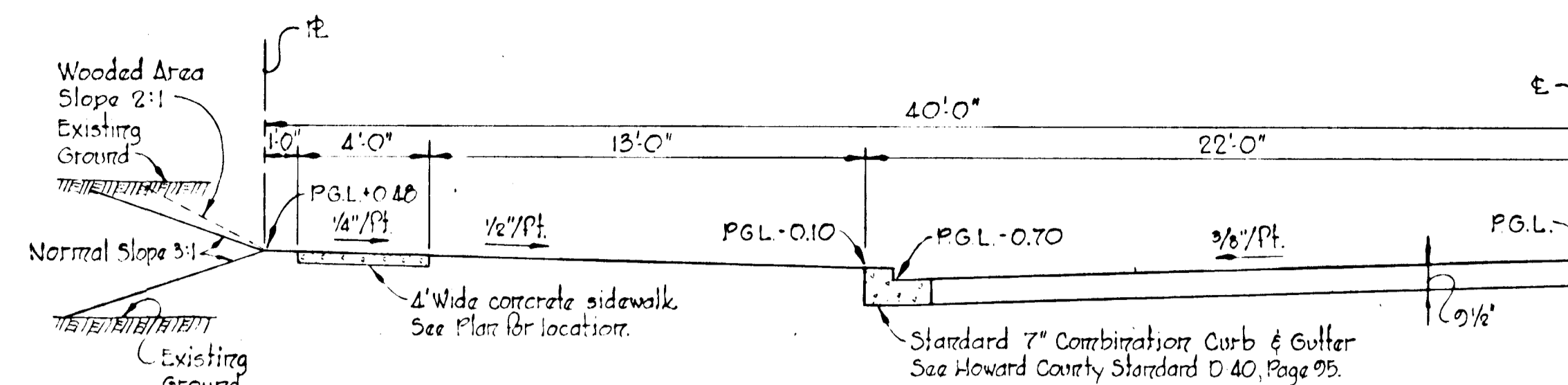
STANDARD 7' COMBINATION CURB & GUTTER

No Scale

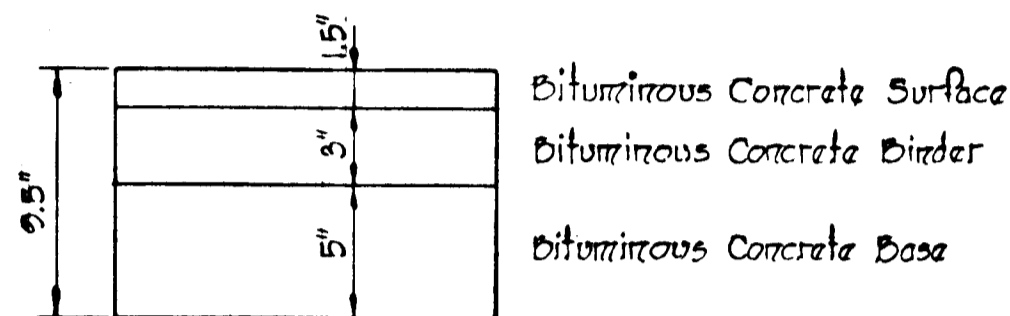


REVERSE 7' COMBINATION CURB & GUTTER

No Scale

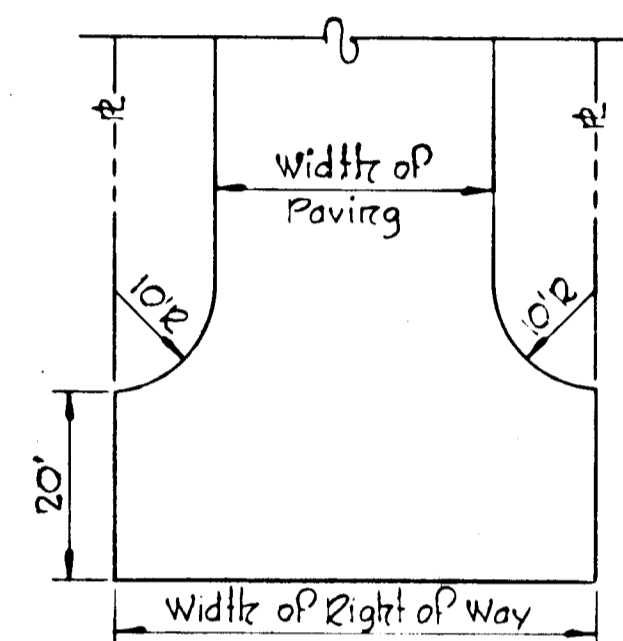


TYPICAL HALF SECTION
 80' R/W - 44' ROADWAY
 Scale: 1/4" = 1'-0"



TYPICAL PAVING SECTION

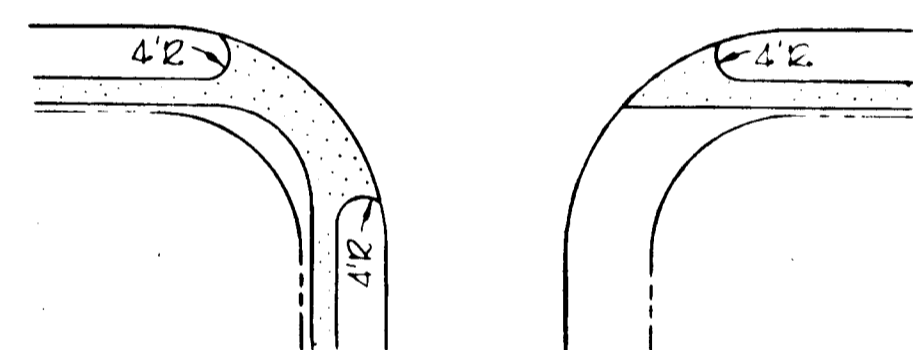
No Scale



TYPICAL TEE TURN AROUND

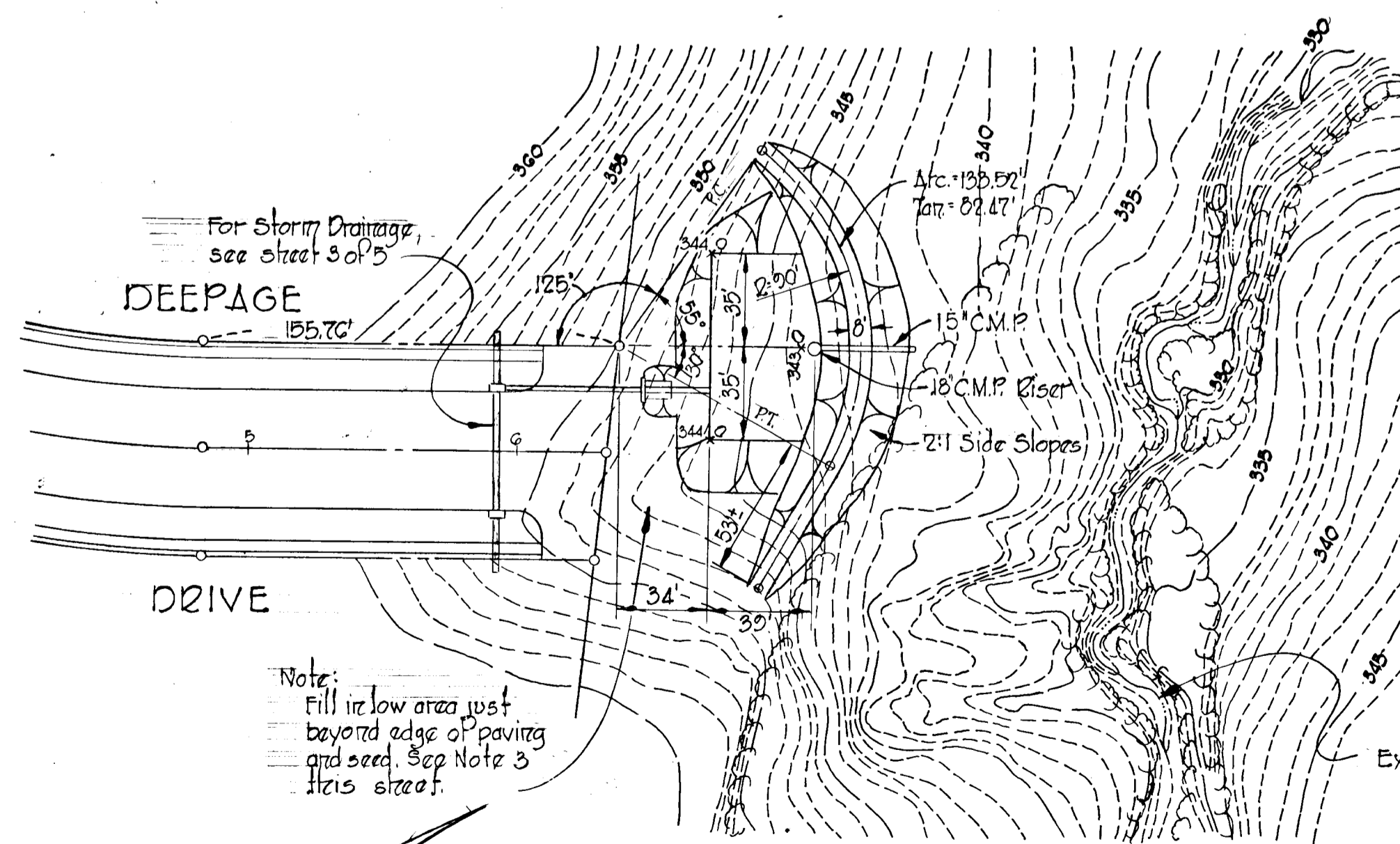
No Scale

- Notes:
- See Howard County Standard Dwg. D-12, Page 67.
 - Base will be primed in accordance with C-30-3 as provided in the Howard County Road Construction Code and Standard Specifications.
 - Tack coat is required in accordance with section C-31-4 of the Howard County Road Construction Code and Standard Specifications.



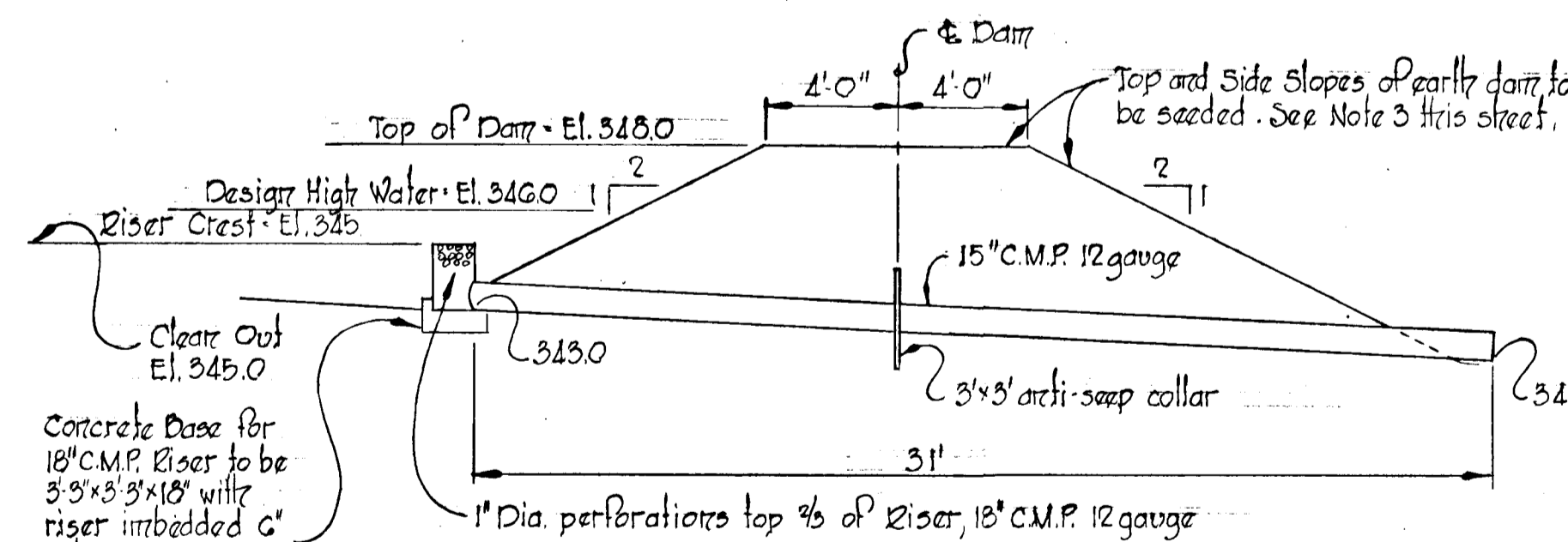
SIDEWALK DETAILS

No Scale



PLAN

Scale: 1" = 50'



CROSS SECTION THRU DAM

No Scale

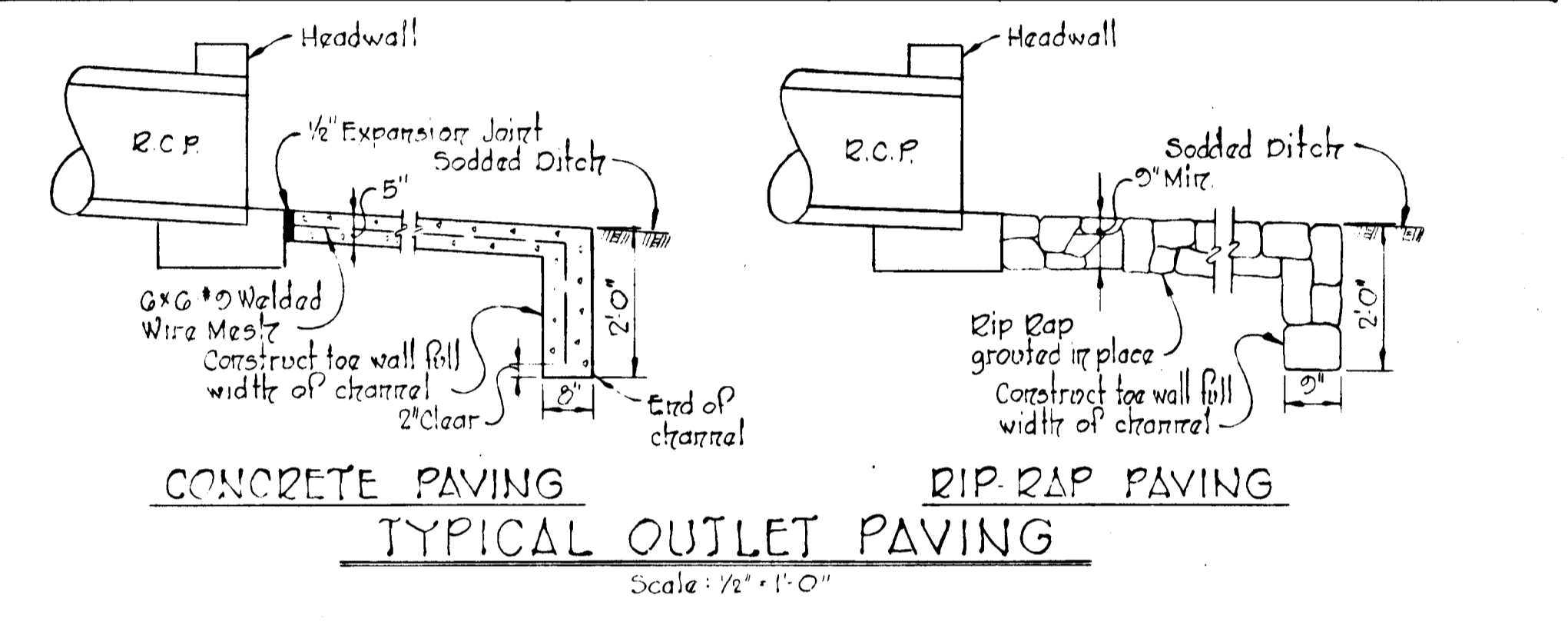
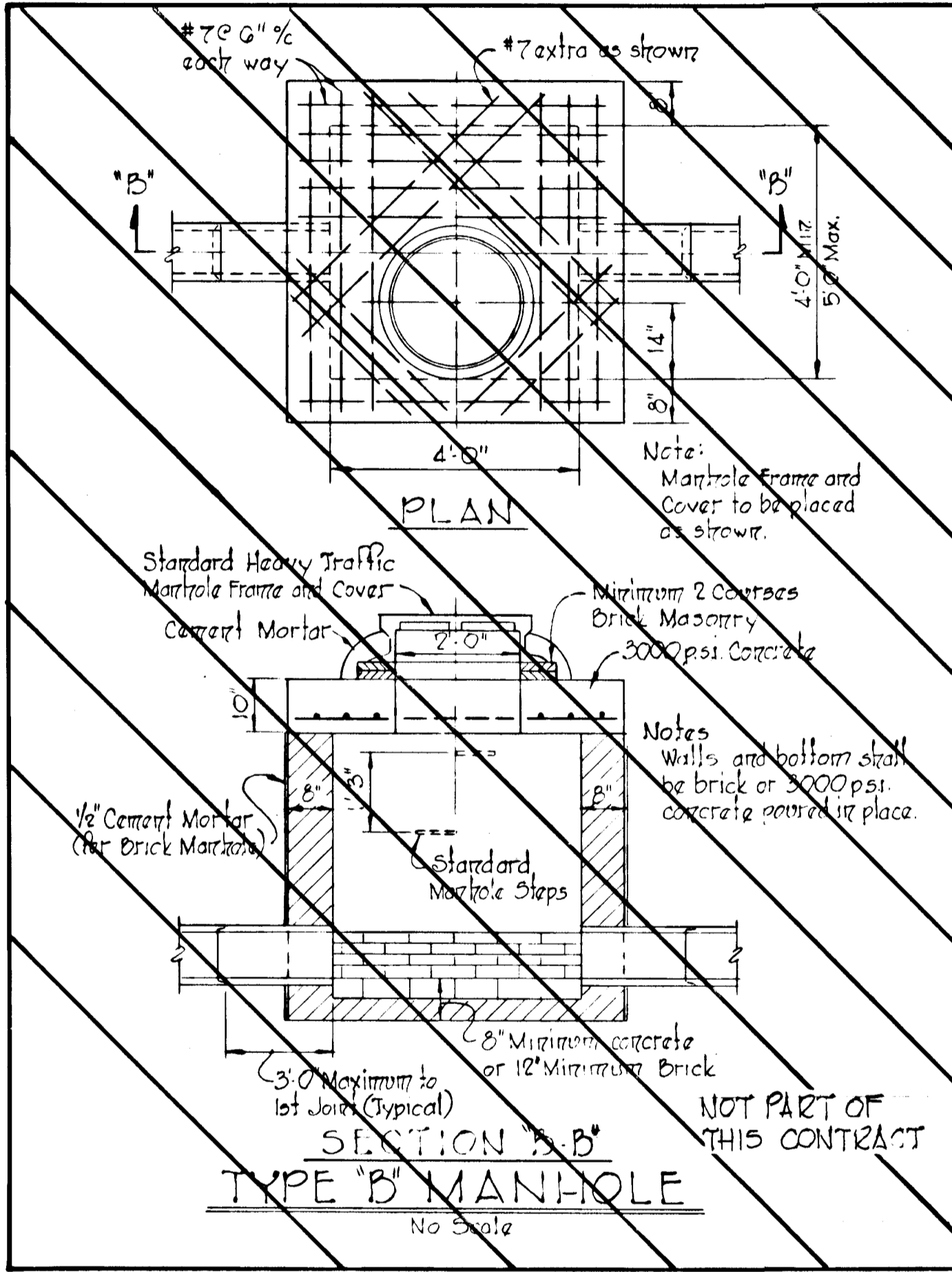
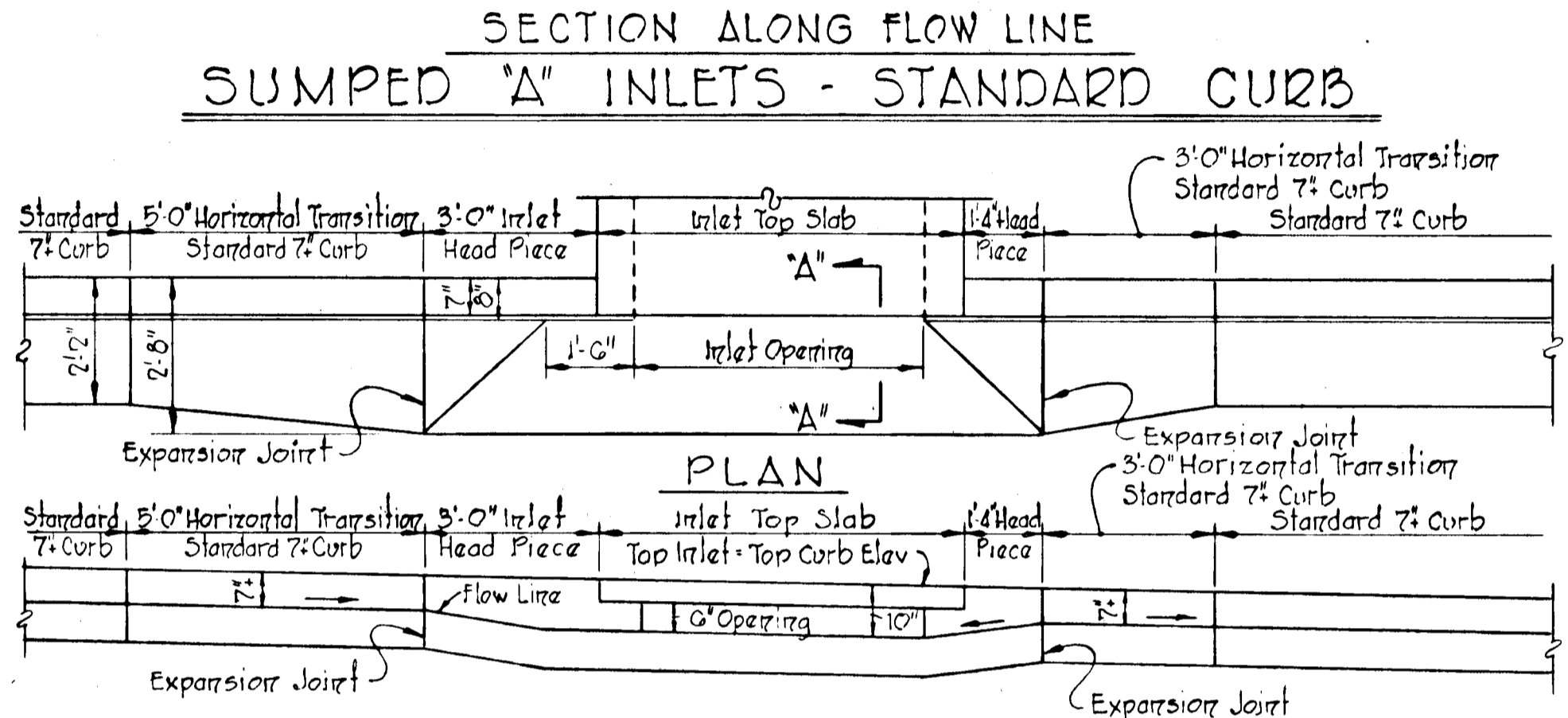
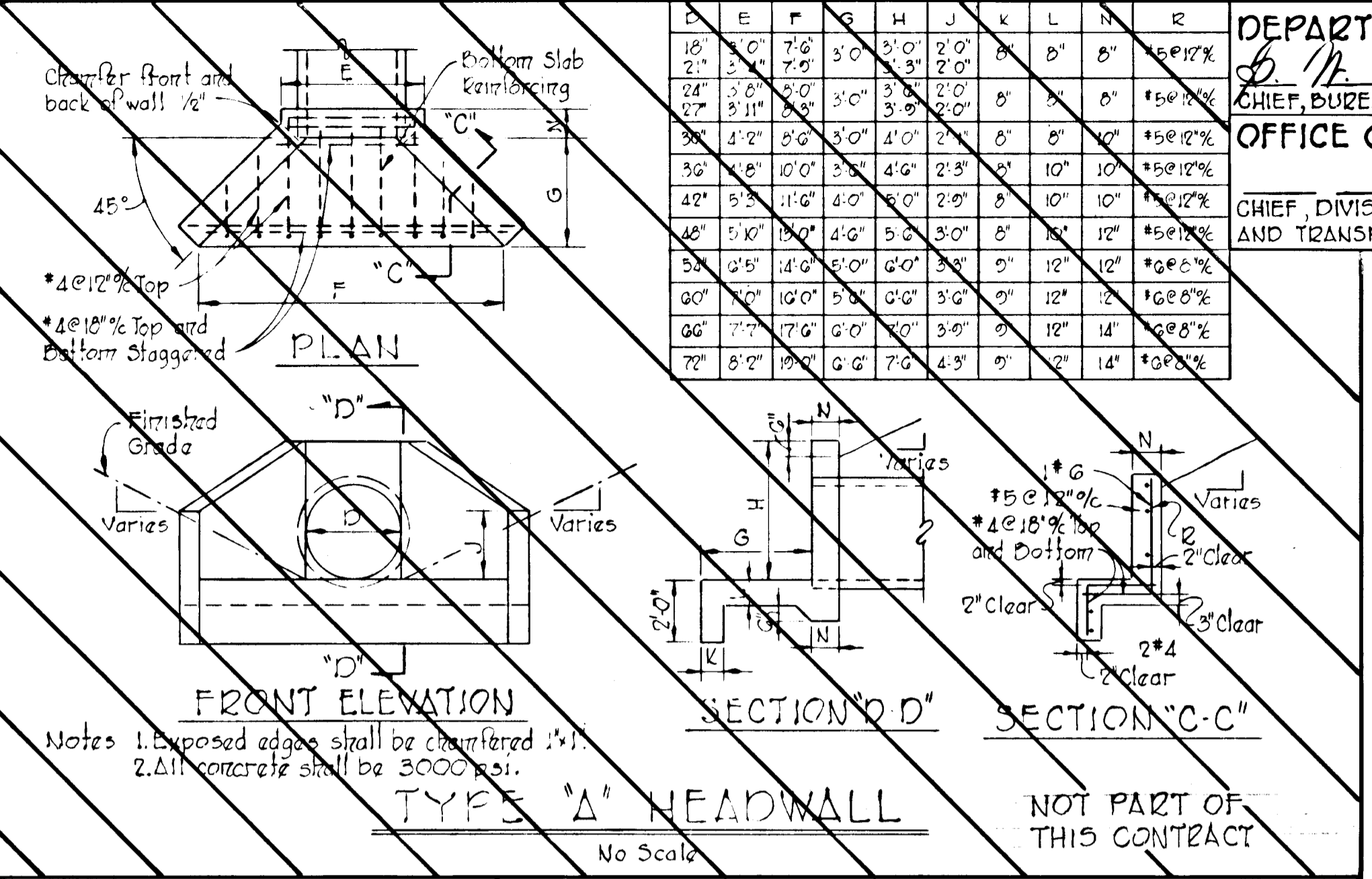
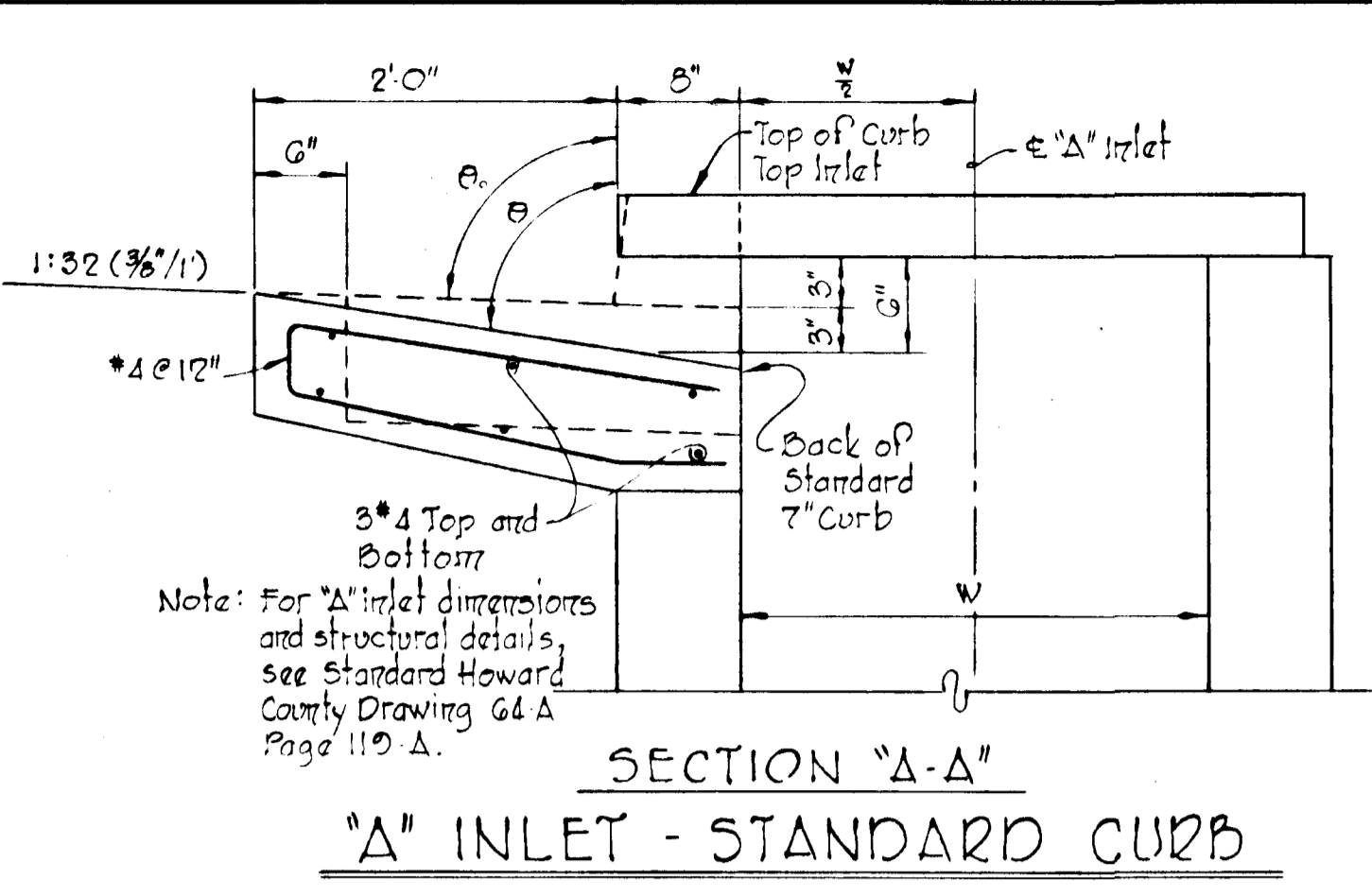
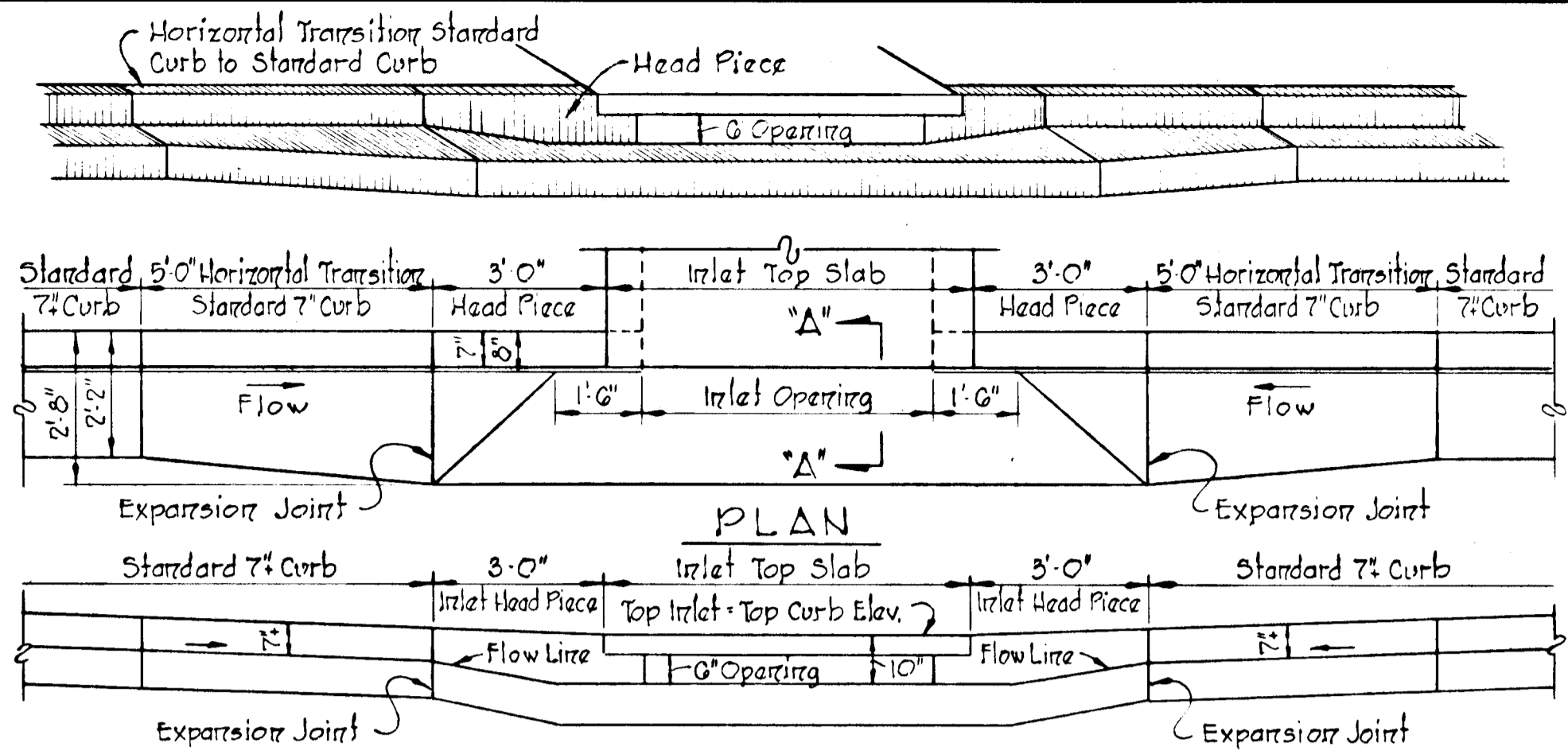
SEDIMENT CONTROL NOTES

- All sediment controls must be constructed prior to any grading.
- No temporary sediment control structure may be removed or destroyed without approval of the Howard County Soil Conservation District.
- All areas to be seeded shall receive the following mixture: annual ryegrass (20%), Kentucky blue grass (20%), and Kentucky 31 fescue (60%) at the rate of 200#/Acre. Sow with mechanical spreader, minimum of two (2) passes with "York Rake" cover and compact with cultipacker. Surface preparation to include ground limestone over topsoil surface area at the rate of 1/4 ton/Acre (60#/1000#) commercial fertilizer (5-10-10) at the rate of 3/4 ton/Acre (35#/1000#) superphosphate at the rate of 600#/Acre (15#/1000#).
- All inlet openings shall be temporarily sealed with plywood during construction and prior to roadway paving.
- Prior to starting grading, the Contractor shall give 24 hours notice to the Howard Soil Conservation District and the Howard County Bureau of Licenses, Inspections and Permits.
- All earthwork stockpiles that will be undisturbed for 3 weeks or longer, shall immediately after piling be fertilized, limed and seeded with annual ryegrass at the rate of 1#/1000 SF.
- For estimate of quantities see Title Sheet, sheet 101-B.

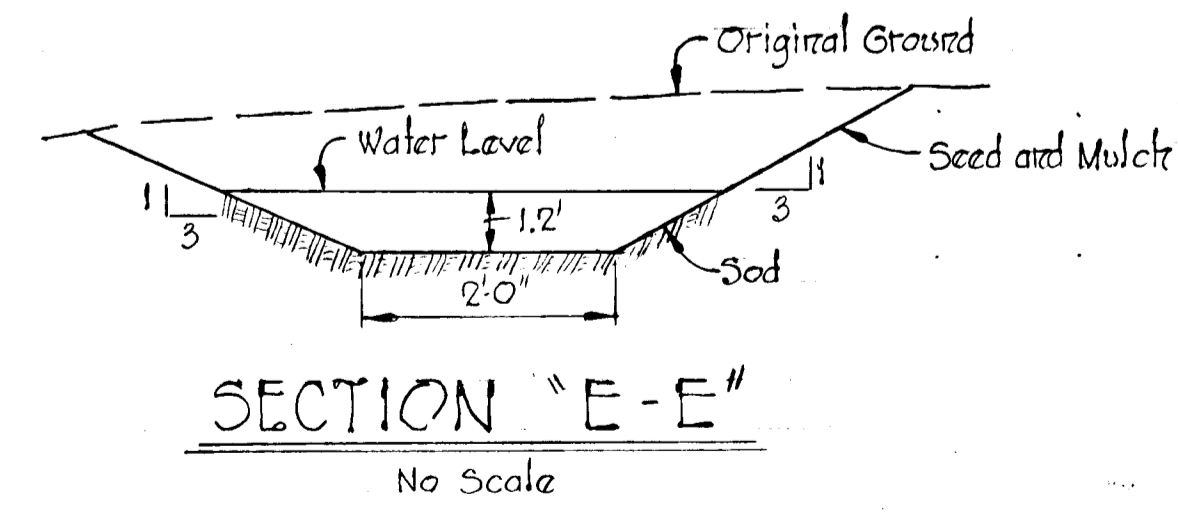
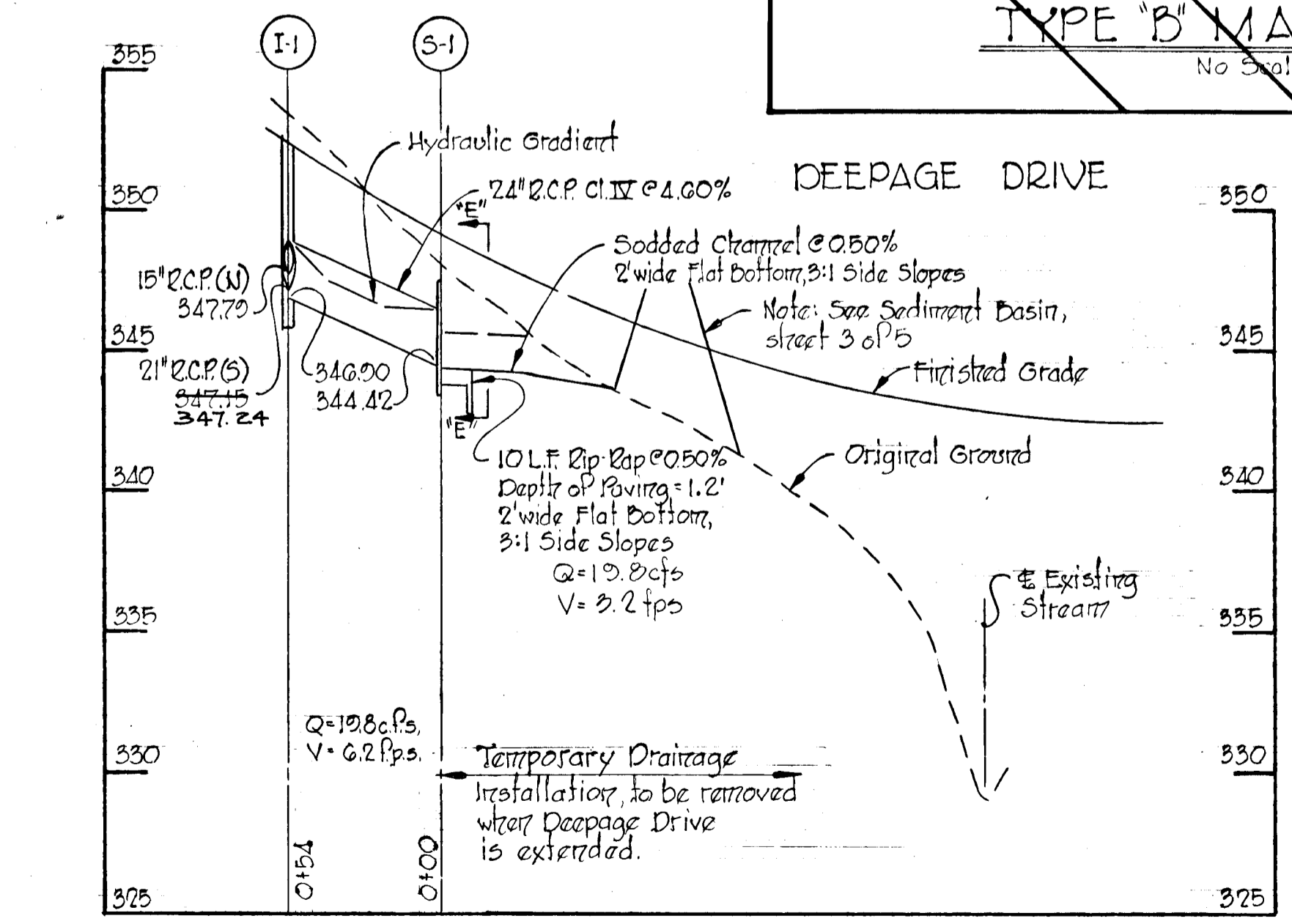
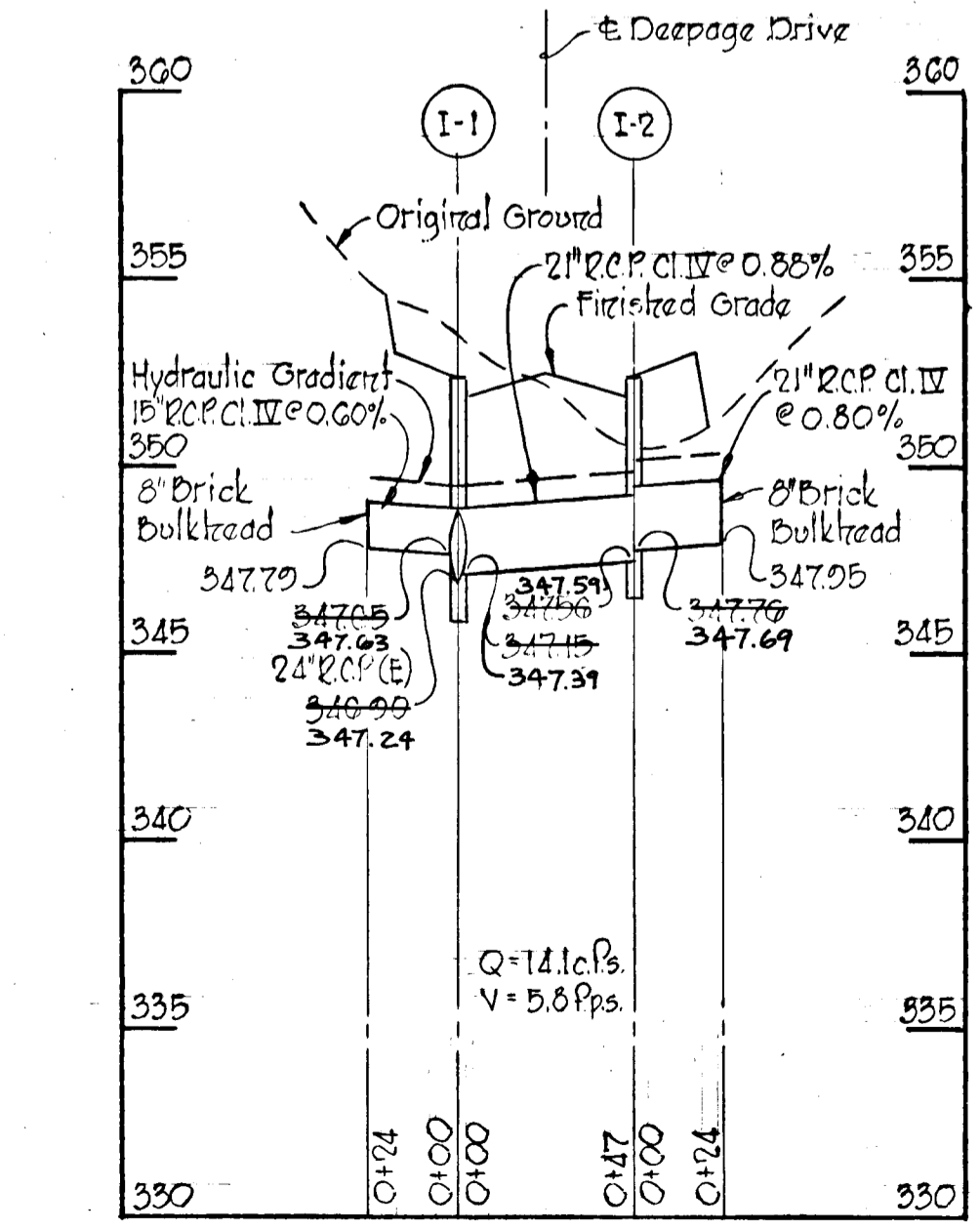
CERTIFICATION BY THE ENGINEER
 I certify that this plan for erosion and sediment control represents a practical and workable plan based on my personal knowledge of the site condition and that it was prepared in accordance with the requirements of the Howard Soil Conservation District.
Kenneth A. McCord
 Signature Date

APPROVED
 DIVISION OF LAND DEVELOPMENT AND TRANSPORTATION PLANNING
 HOWARD COUNTY, MARYLAND
 DATE 9/23/73
K. S. L.

Rev. Date	Rev. No.	Revision Description
COLUMBIA		
6 TH ELECTION DISTRICT HOWARD COUNTY, MARYLAND OWNER AND DEVELOPER		
THE HOWARD RESEARCH AND DEVELOPMENT CORP.		
PROJECT AREA VILLAGE OF OWEN BROWN SECTION 2, AREA 2		
PROJECT TITLE ROADWAY DETAILS & SEDIMENT CONTROL PLAN & DETAILS		
Scale: As Shown		Date: 3/14/73
WHITMAN, REQUARDT & ASSOCIATES ENGINEERS BALTIMORE, MARYLAND 21202		
Kenneth A. McCord Registered Engineer No 1974		



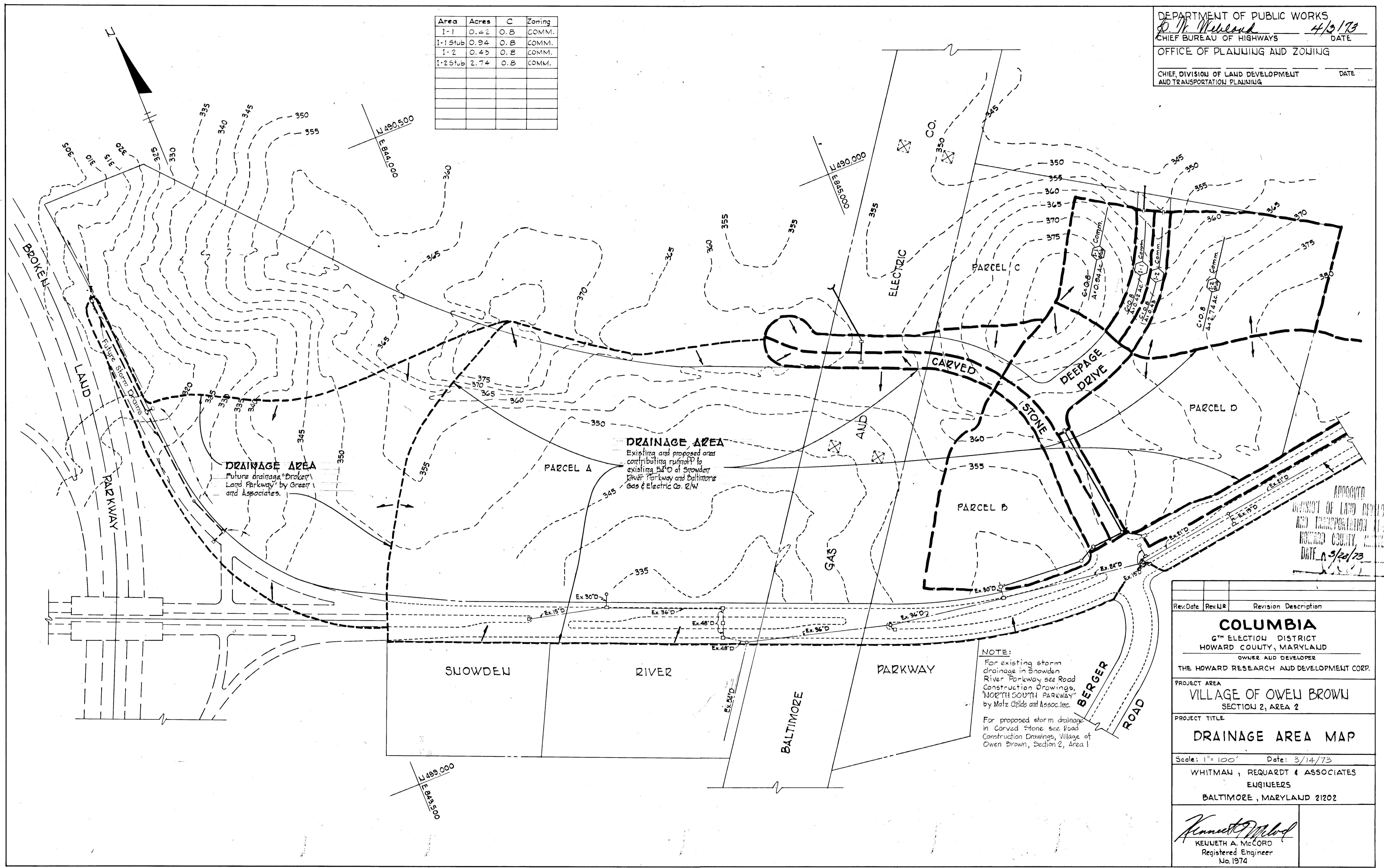
AS-BUILT SURVEY DATA
 BY WALTER PARK MD. L.S. 5539
 SIGNED, SEALED DATED 6/12/80.



APPROVED
 DIVISION OF LAND DEVELOPMENT
 AND TRANSPORTATION PLANNING
 HOWARD COUNTY, MARYLAND
 DATE 3/23/73

Rev. Date	Rev. No.	Revision Description
COLUMBIA 6TH ELECTION DISTRICT HOWARD COUNTY, MARYLAND OWNER AND DEVELOPER THE HOWARD RESEARCH AND DEVELOPMENT CORP.		
PROJECT AREA VILLAGE OF OWEN BROWN SECTION 2, AREA 2		
PROJECT TITLE STORM DRAIN PROFILES AND DETAILS		
Scale: As Shown		Date: 3/14/73
WHITMAN, REQUART & ASSOCIATES ENGINEERS BALTIMORE, MARYLAND 21202		
 KENNETH A. MCCORD Registered Engineer No 1974		

Area	Acres	C	Zoning
I-1	0.42	O. B.	COMM.
I-1Stub	0.94	O. B.	COMM.
I-2	0.43	O. B.	COMM.
I-2Stub	2.74	O. B.	COMM.



APPROVED
 DEPARTMENT OF LAND DEVELOPMENT AND TRANSPORTATION PLANNING
 HOWARD COUNTY, MARYLAND
 DATE 3/20/73

Rev. Date	Rev. No.	Revision Description
COLUMBIA		
6 TH ELECTION DISTRICT HOWARD COUNTY, MARYLAND OWNER AND DEVELOPER THE HOWARD RESEARCH AND DEVELOPMENT CORP.		
PROJECT AREA VILLAGE OF OWEN BROWN SECTION 2, AREA 2		
PROJECT TITLE DRAINAGE AREA MAP		
Scale: 1" = 100'		Date: 3/14/73
WHITMAN, REQUARDT & ASSOCIATES ENGINEERS BALTIMORE, MARYLAND 21202		
<i>Kenneth A. McCord</i> KENNETH A. McCORD Registered Engineer No. 1974		