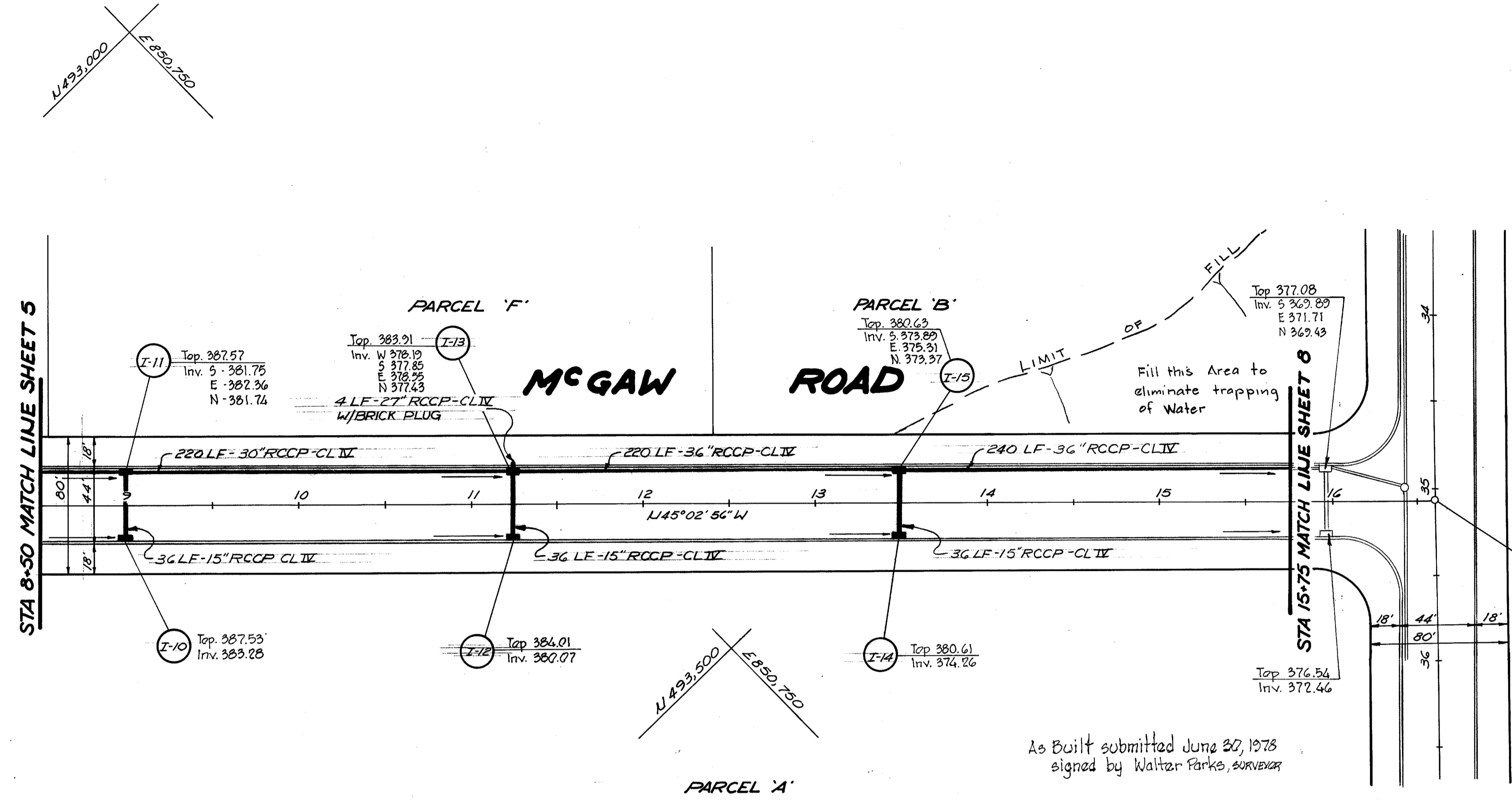


PLAN
SCALE: 1"=50'

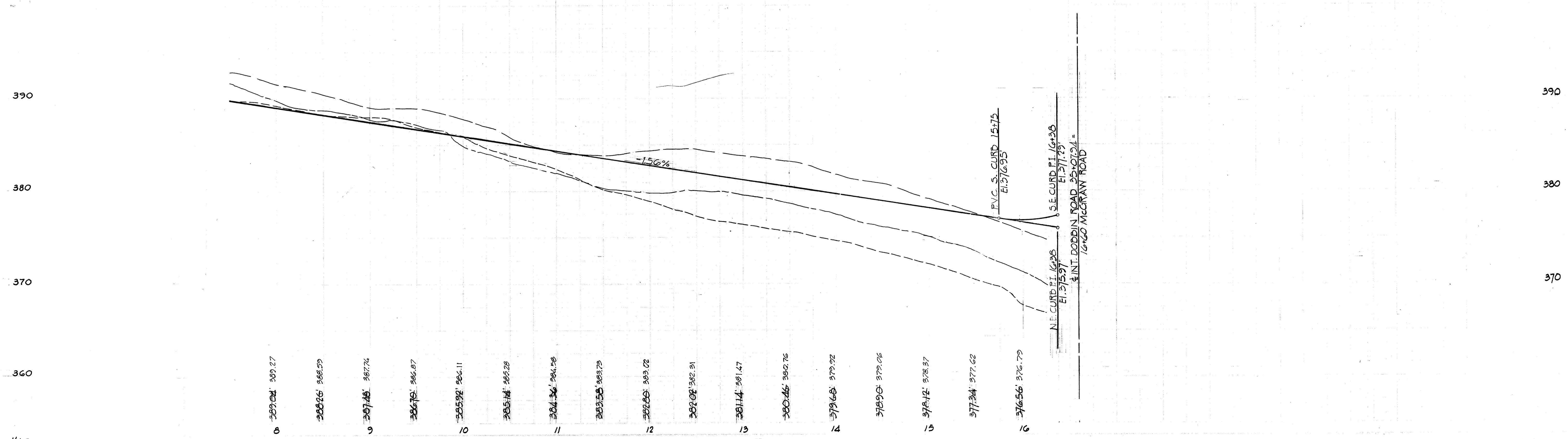


LEGEND

- EX. GROUND LT. BUILDING RESTRICTION LINE
- EX. GROUND RT. BUILDING RESTRICTION LINE
- EXISTING GROUND @ ϕ
- FINISHED GRADE @ P.G.L.

FOR STORM DRAIN
PROFILES SEE SHEET 13

PROFILE
SCALE: 1"=50' VERT
1"=50' HOR.



STRUCTURE		SCHEDULE				
NO.	TYPE	LOCATION	INV. IN	INV. OUT	T.C.P. ELEV.	REMARKS
I-10	DBL.'S' COMB.	STA. 9+00 - 22' RT.		383.21	387.48	HO. CO. DWG. 99 PG. 154
I-11	DBL.'S' COMB. (DEPRESSED)	STA. 9+00 - 22' LT.	382.48-15" 381.48-27"	381.24	387.48	HO. CO. DWG. 99 PG. 154
I-12	DBL.'S' COMB.	STA. 11+25 - 22' RT.		379.78	383.97	HO. CO. DWG. 99 PG. 154
I-13	DBL.'S' COMB. (DEPRESSED)	STA. 11+25 - 22' LT.	379.06-15" 378.06-27" 377.81-30"	377.31	383.97	HO. CO. DWG. 99 PG. 154
I-14	DBL.'S' COMB.	STA. 13+50 - 22' RT.		376.15	380.46	HO. CO. DWG. 99 PG. 154
I-15	DBL.'S' COMB. (DEPRESSED)	STA. 13+50 - 22' LT.	375.43-15" 373.88-36"	373.68	380.46	HO. CO. DWG. 99 PG. 154

DOBBIN ROAD

APPROVED
DIVISION OF LAND DEVELOPMENT
AND TRANSPORTATION PLANNING
HAROLD COUNTY, GEORGIA
DATE: MAY 25 1972
J.T.C.



DEPARTMENT OF PUBLIC WORKS
B. M. McElwain 5/30/72
 CHIEF, BUREAU OF HIGHWAYS DATE

OFFICE OF PLANNING AND ZONING
 CHIEF, DIVISION OF LAND DEVELOPMENT AND TRANSPORTATION PLANNING DATE

GREEN ASSOCIATES, INC.
 CONSULTING ENGINEERS
 BALTIMORE, MARYLAND

0-1-00 Δ CHANGED I-14 FROM DBL.'S' COMB TO DBL.'S'

Rev. Date: Rev. No:

COLUMBIA
 MARYLAND
 6TH FLOOR, 1000 N. WASHINGTON BLVD.
 HOWARD COUNTY, MARYLAND

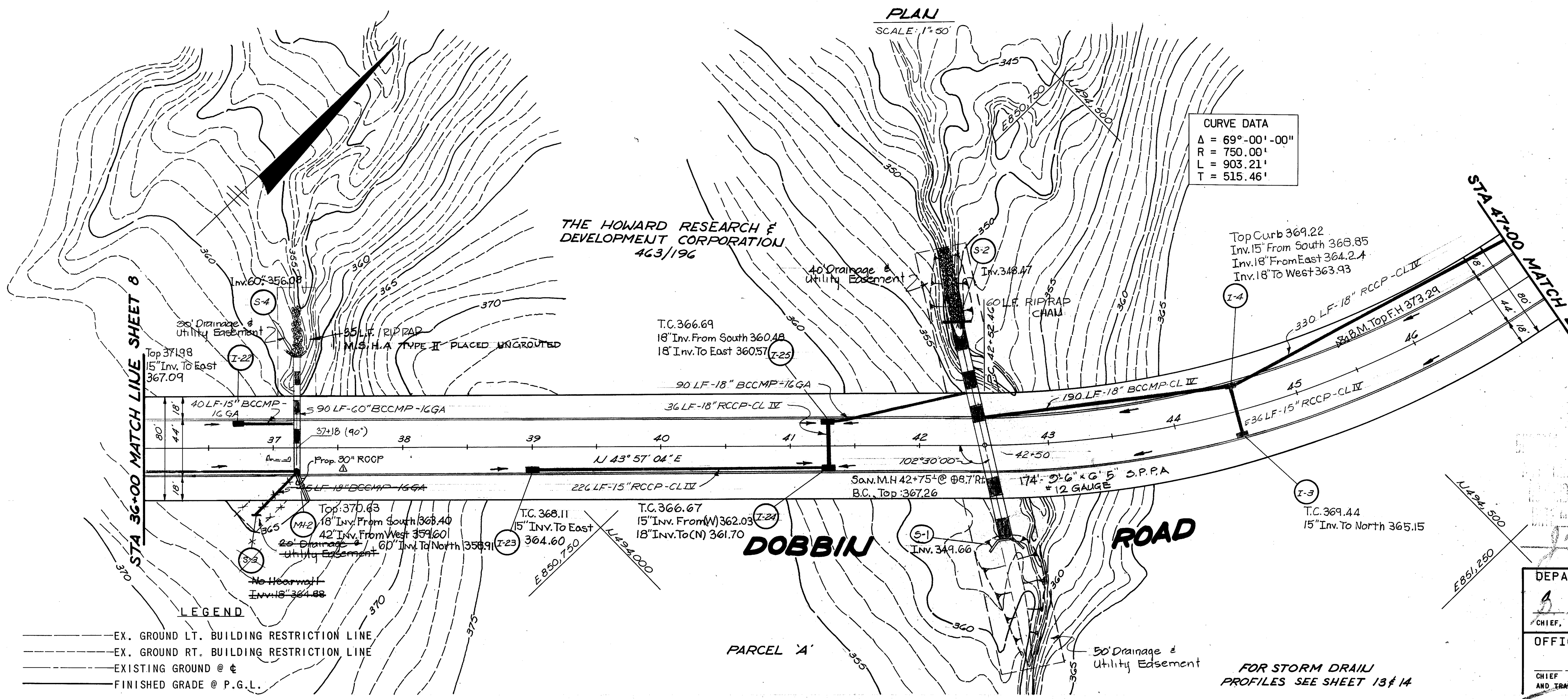
PROJECT AREA: SIELING INDUSTRIAL CENTER

PROJECT TITLE: Mc GAW ROAD
 STA. 8+50 TO STA. 15+75

Des. By: F.T. Scale: AS SHOWN G of 14
 Drawn By: J.D. & A.R. Date: APRIL 1972
 Chk. By: J.T.J. Approved:

As Built submitted June 30, 1978
 signed by Walter Parks, SURVEYOR

35+07.94
 16+00 (rail - 376.65)



STRUCTURE SCHEDULE							
NO.	TYPE	LOCATION	INV. IN	INV. OUT	T.C.P. ELEV.	REMARKS	
I-22	DBL. 'S' COMB.	STA. 36+75-22' LT.		367.78	372.02	HO. CO. DWG. 99 PG. 154	
S-3	METAL END SEC.	STA. 36+90-53' RT.	364.50			SEE DETAIL SHT. 12	
S-4	SMALL 'B' WALL	STA. 37+20-70' LT.		356.20		HO. CO. DWG. 48 PG. 103	
MH-2	SPECIAL MANHOLE	STA. 37+20-17' RT.	364.00 358.75-42'	356.92	370.40	SEE DETAIL SHT. 12	
I-23	DBL. 'S' COMB. (DEP.)	STA. 39+00-22' RT.		364.25	368.04	HO. CO. DWG. 99 PG. 154	
I-24	DBL. 'S' COMB.	STA. 41+30-22' RT.		361.99	361.74	366.66	HO. CO. DWG. 99 PG. 154
I-25	DBL. 'S' COMB.	STA. 41+30-22' LT.		361.98	361.18	366.66	HO. CO. DWG. 99 PG. 154
I-3	DBL. 'S' COMB.	STA. 44+50-22' RT.		365.25	369.31	HO. CO. DWG. 99 PG. 154	
I-4	DBL. 'S' COMB.	STA. 44+50-22' LT.		364.89-15" 364.40-18"	364.20	369.31	HO. CO. DWG. 99 PG. 154
S-1	LARGE 'B' ARCH WALL	STA. 42+64-76' RT.	349.00			HO. CO. DWG. 51 PG. 106	
S-2	SPECIAL ENDWALL	STA. 42+28-94' LT.		347.16		SEE DETAILS SHT. 12	

GREEN ASSOCIATES, INC.
CONSULTING ENGINEERS
BALTIMORE, MARYLAND

0-1-00 Δ ADDED PROP 60" ROOF AND REMOVED 6-3

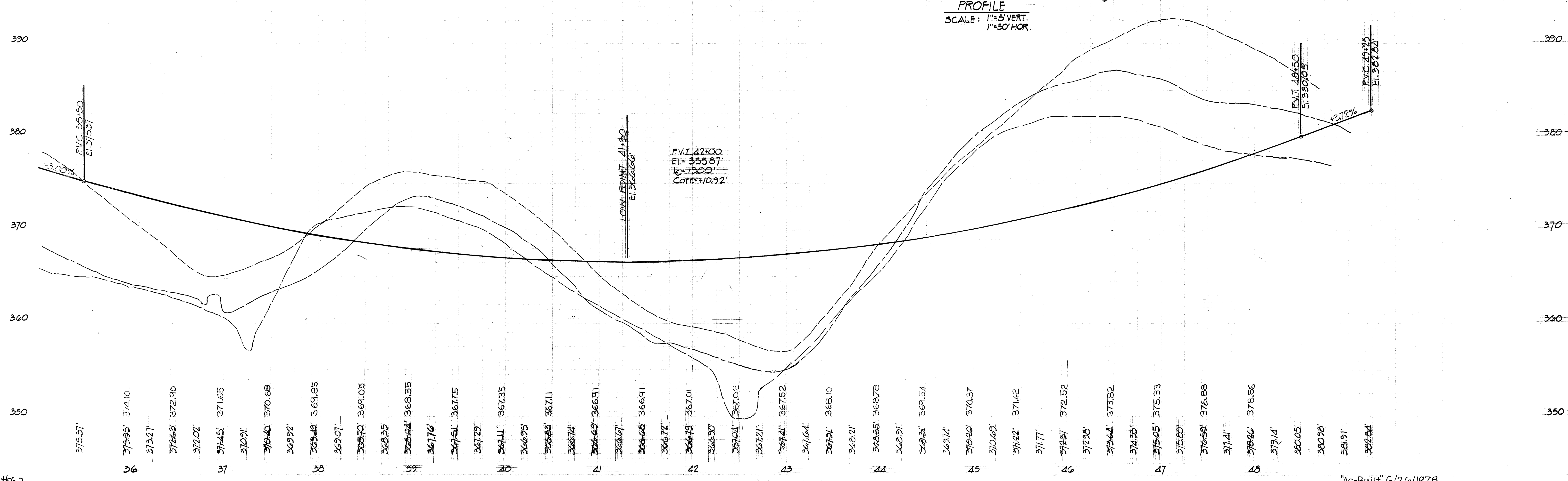
STATE OF MARYLAND
DEPARTMENT OF PUBLIC WORKS
OFFICE OF PLANNING AND ZONING

DEPARTMENT OF PUBLIC WORKS
B. M. McKeand 5/30/72
CHIEF, BUREAU OF HIGHWAYS DATE

OFFICE OF PLANNING AND ZONING
CHIEF, DIVISION OF LAND DEVELOPMENT AND TRANSPORTATION PLANNING DATE

SIELING INDUSTRIAL CENTER
DOBBIN ROAD
STA. 36+00 TO STA. 47+00

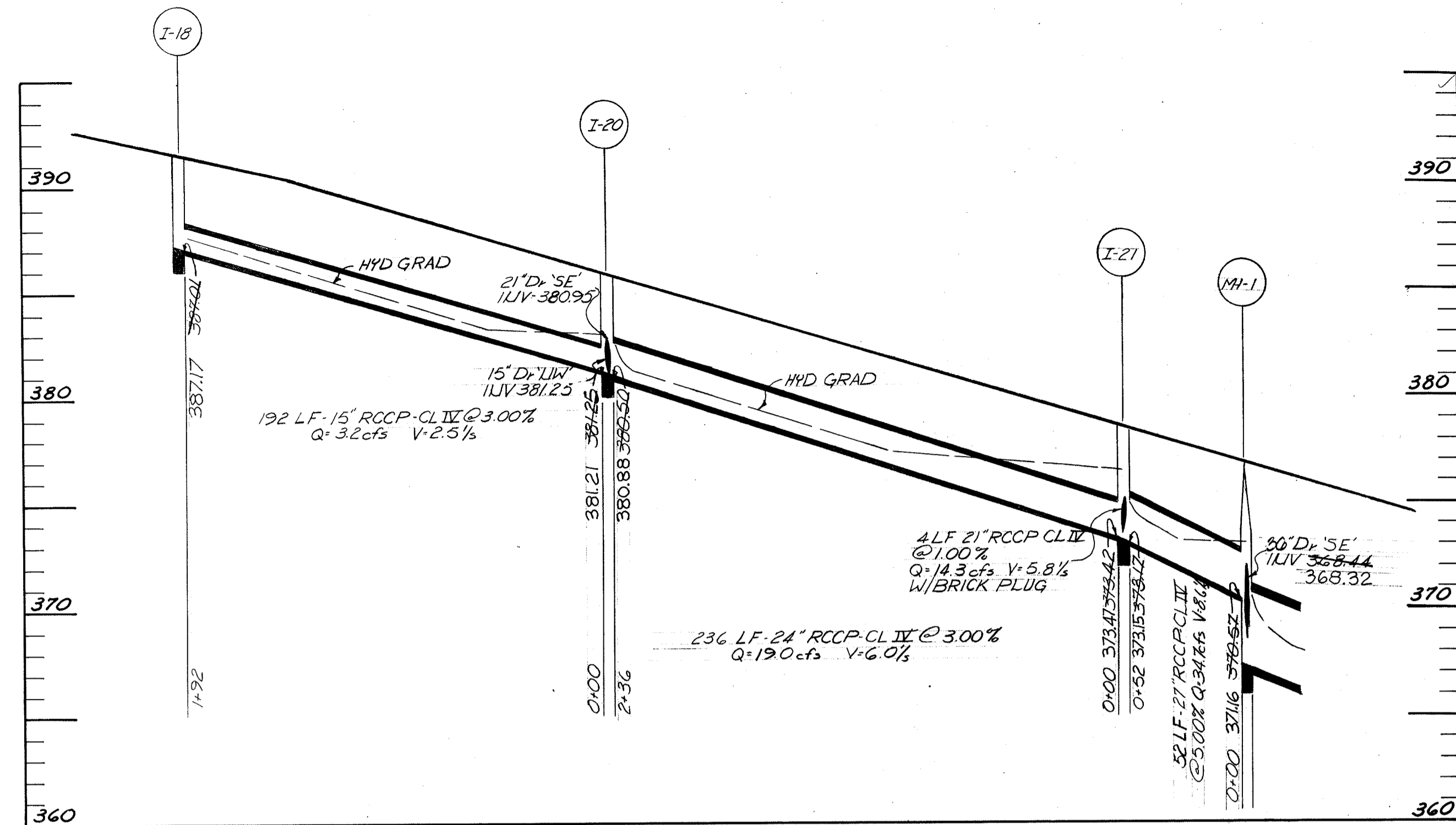
AS SHOWN APRIL 1972



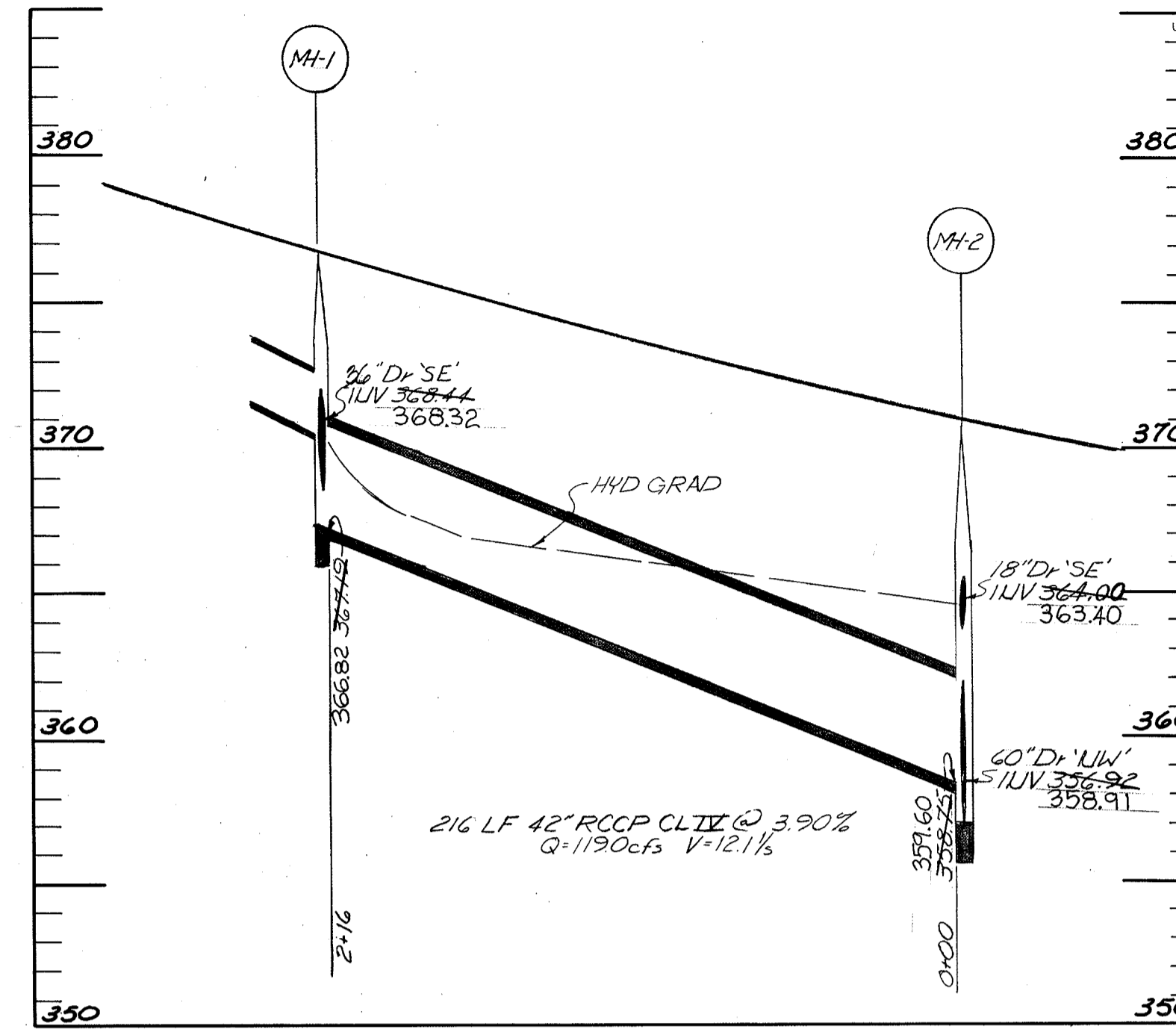
"As-Built" 6/26/1978

XXSI-72-009

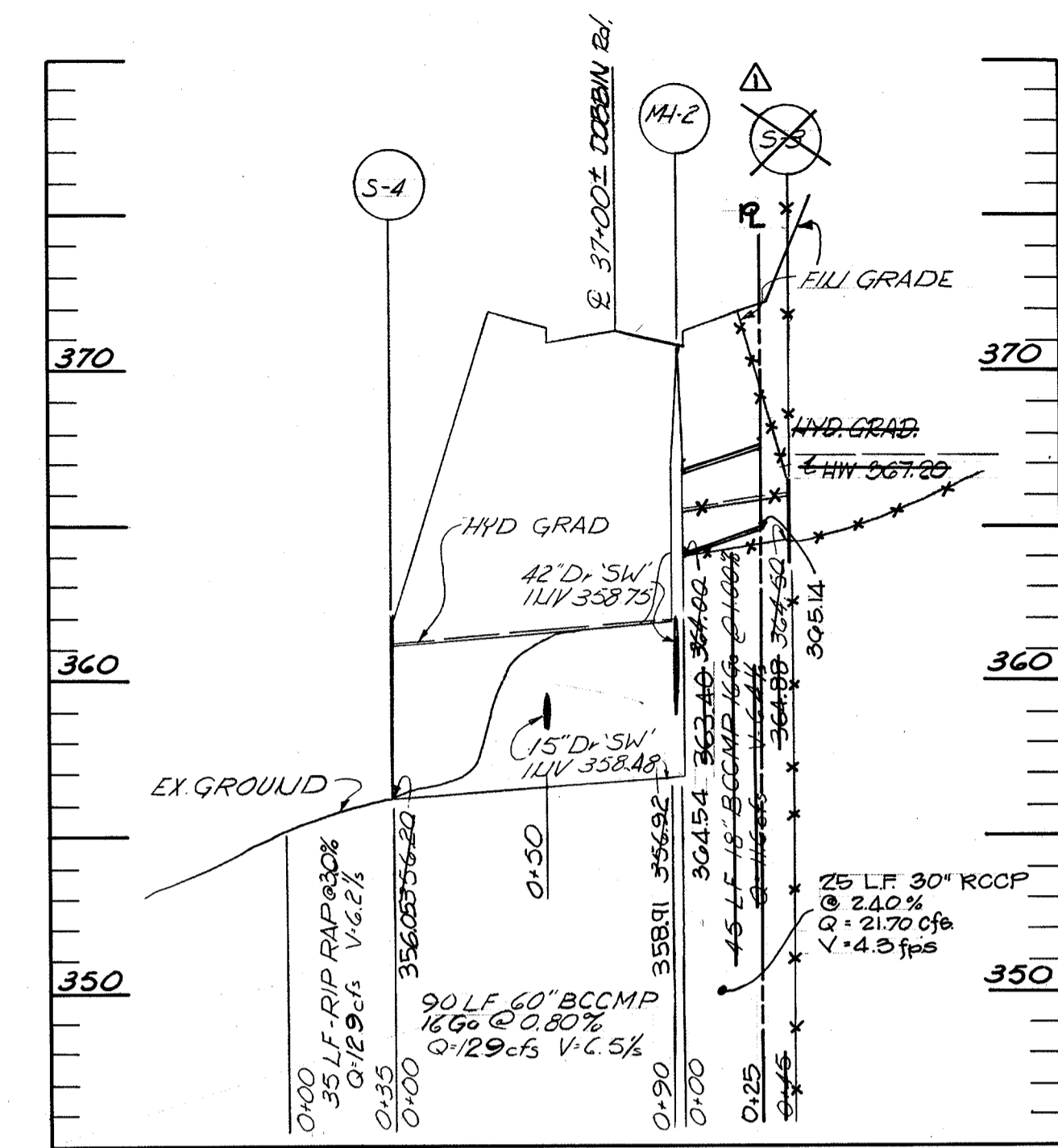
F72-90c



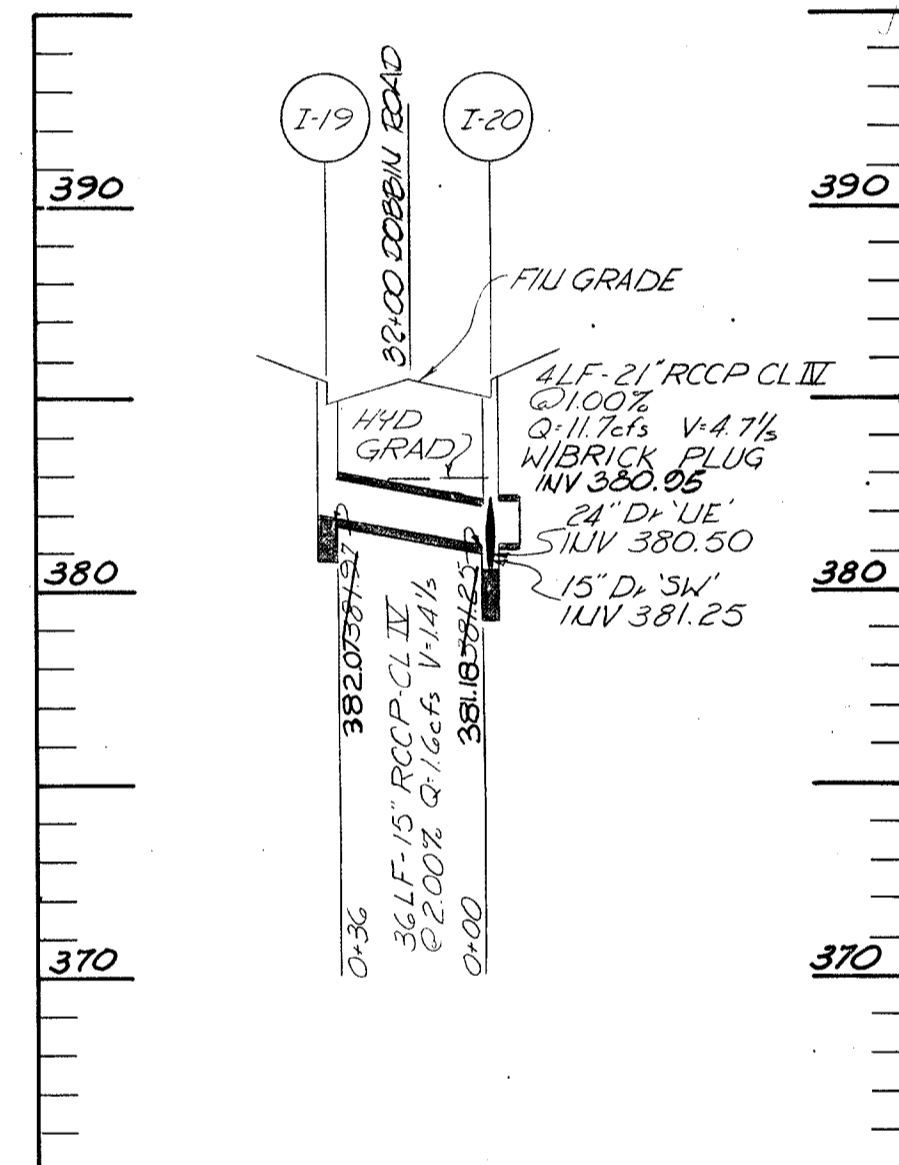
FOR PLAN SEE SHEET 8



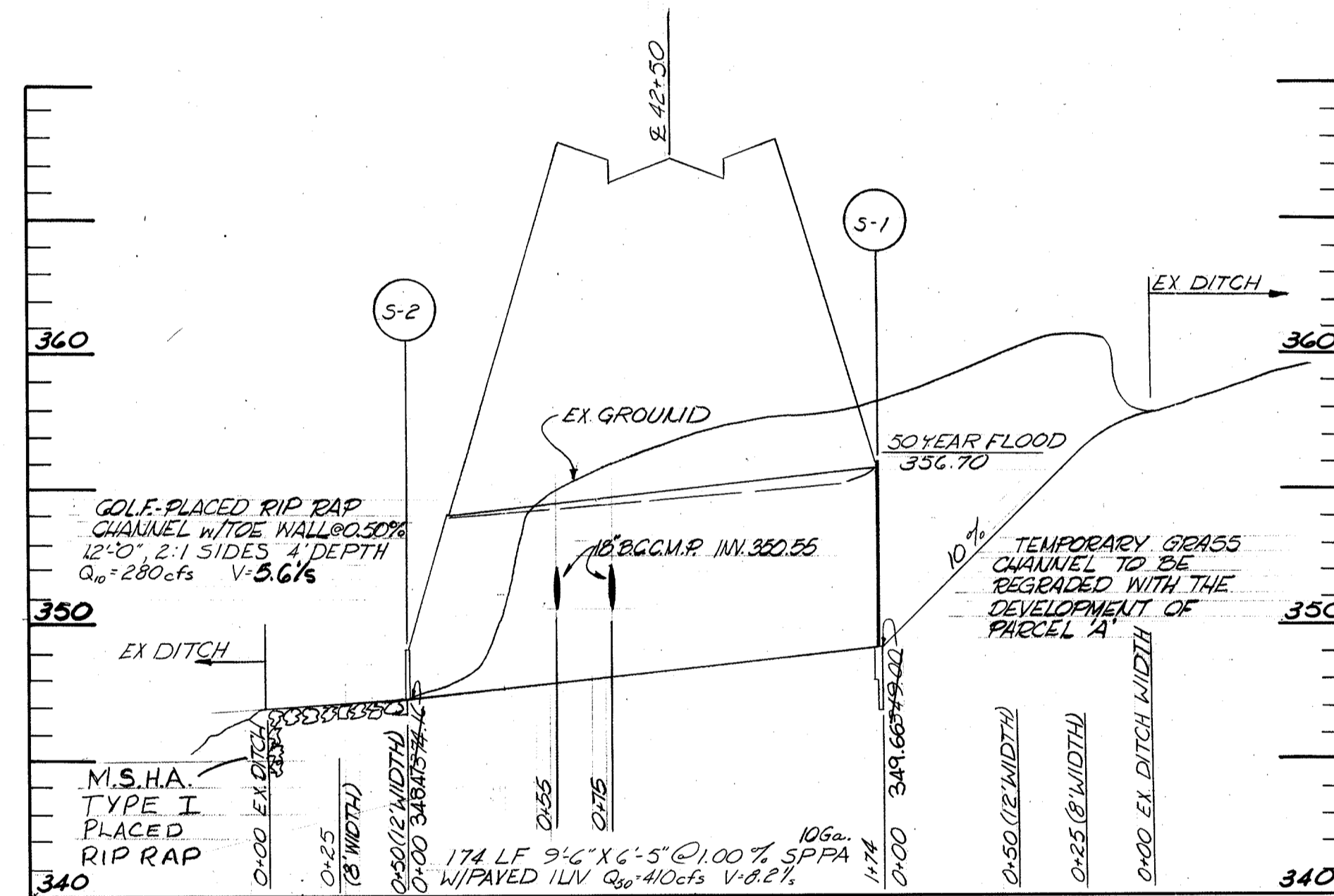
FOR PLAN SEE SHEET 8/9



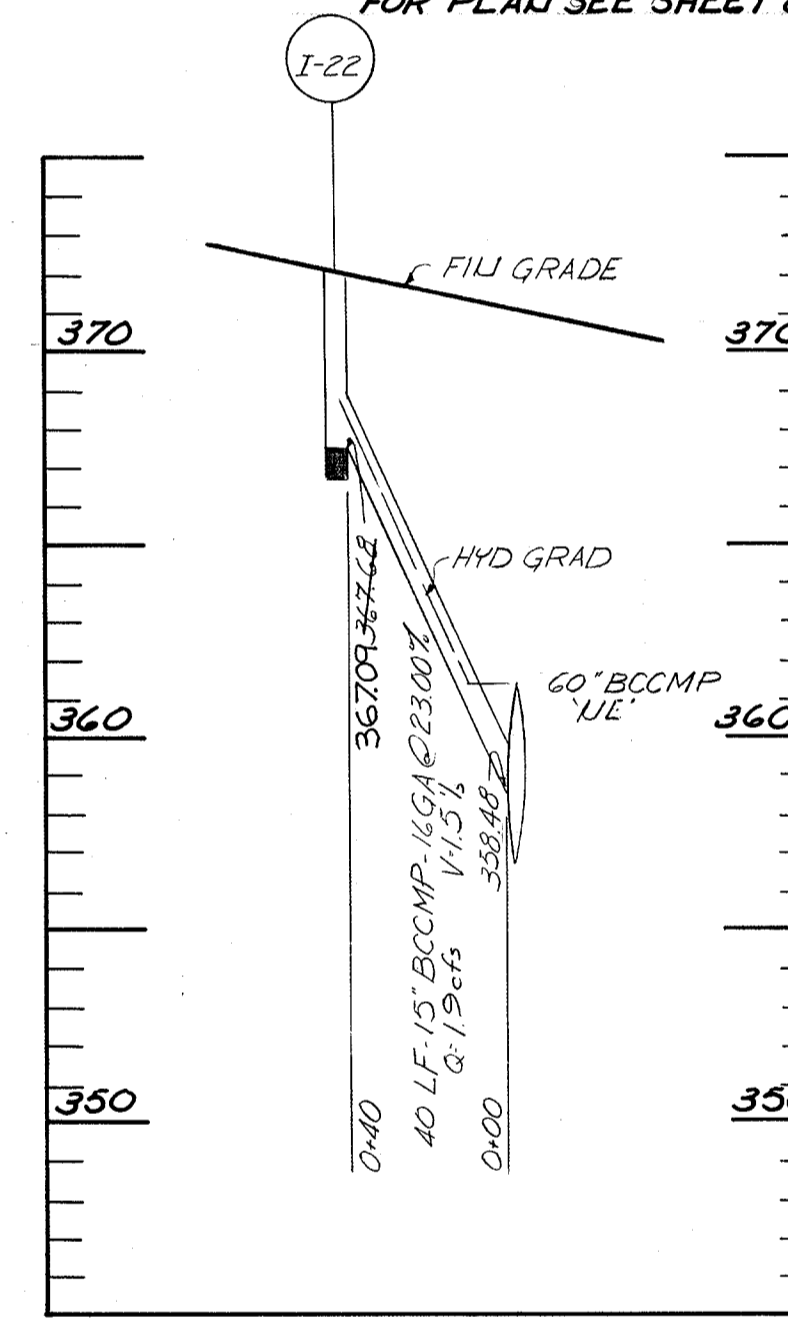
FOR PLAN SEE SHEET 9



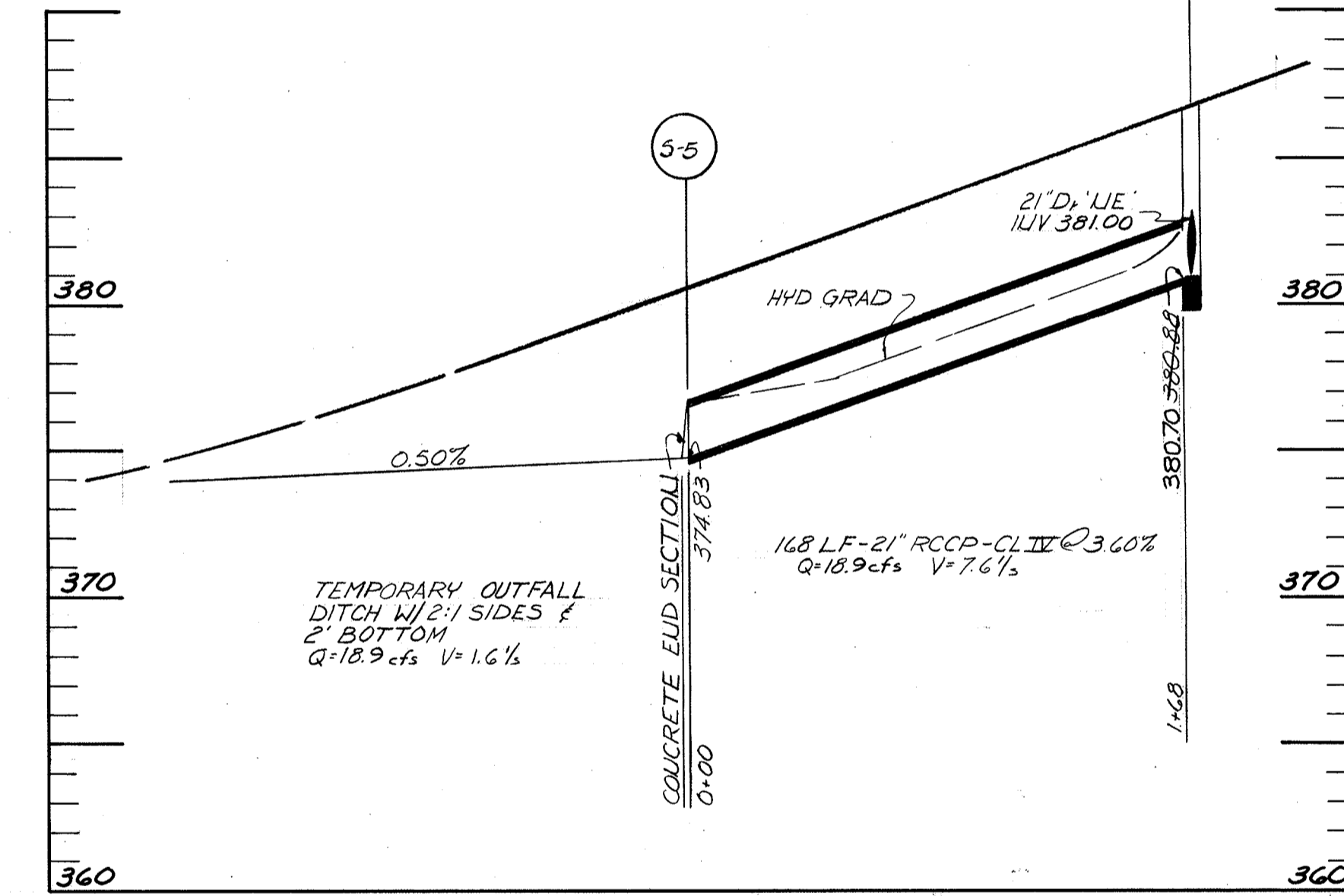
FOR PLAN SEE SHEET 8



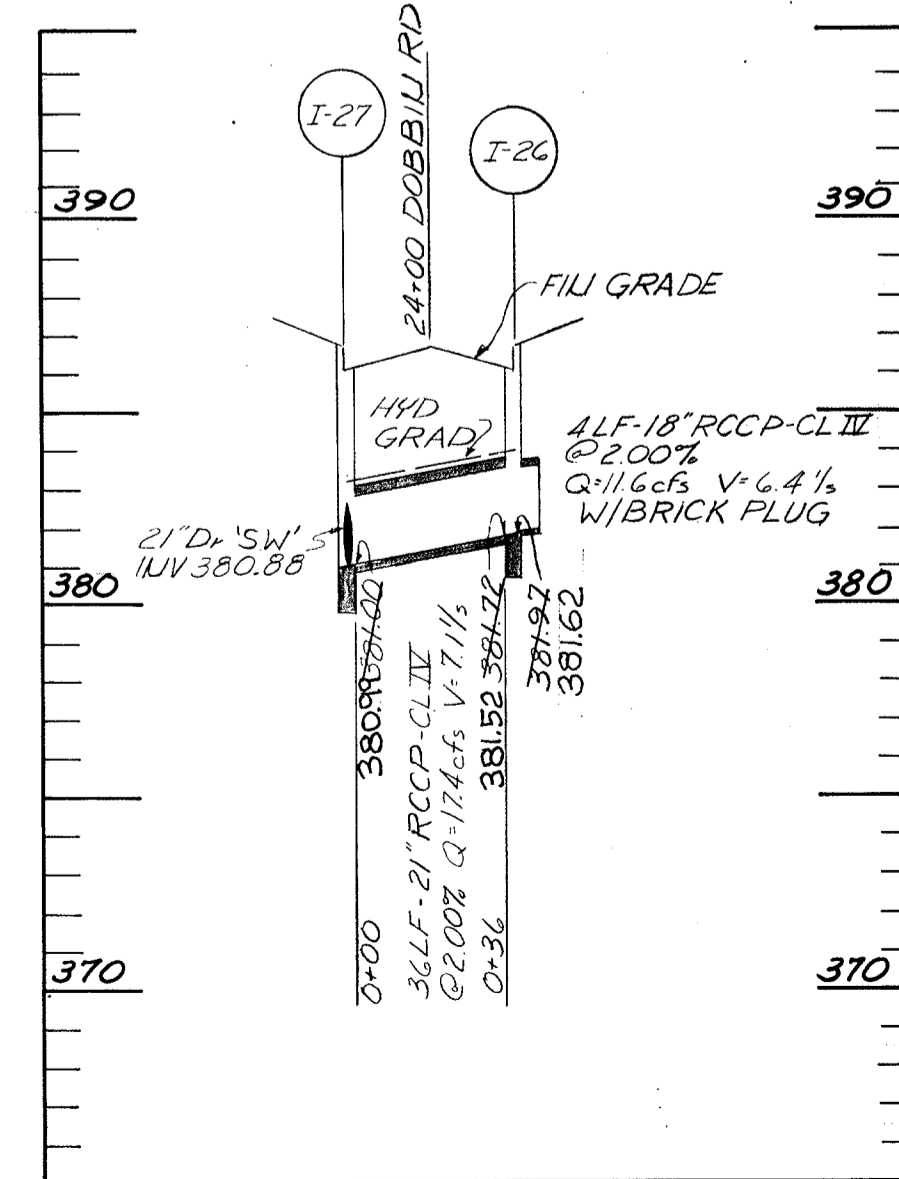
FOR PLAN SEE SHEET 9



FOR PLAN SEE SHEET 9

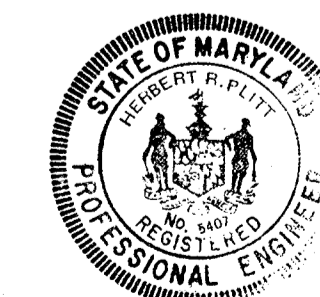


FOR PLAN SEE SHEET 7



FOR PLAN SEE SHEET 7

DEPARTMENT OF PUBLIC WORKS
 CHIEF, BUREAU OF HIGHWAYS
 OFFICE OF PLANNING AND ZONING
 DIVISION OF LAND DEVELOPMENT
 AND TRANSPORTATION PLANNING
 MAY 25 1972
 JTC



Robert R. Elliott

DEPARTMENT OF PUBLIC WORKS	
B. M. Mehlend 5/30/72 CHIEF, BUREAU OF HIGHWAYS DATE	
OFFICE OF PLANNING AND ZONING	
CHIEF	DIVISION OF LAND DEVELOPMENT DATE
AND TRANSPORTATION PLANNING	
GREEN ASSOCIATES, INC. CONSULTING ENGINEERS BALTIMORE, MARYLAND	
REMOVED 33\"/>	
Rev Date	Rev No
COLUMBIA 6TH FLOOR HURON STREET BALTIMORE, MARYLAND	
PROJECT NAME SIELING INDUSTRIAL CENTER	
PROJECT SHEET STORM DRAIN PROFILES	
Des. By F.T.	1\"/>
Drawn By J.D.	1\"/>
CHK. BY J.T.J.	MAY 1972
14 OF 14	