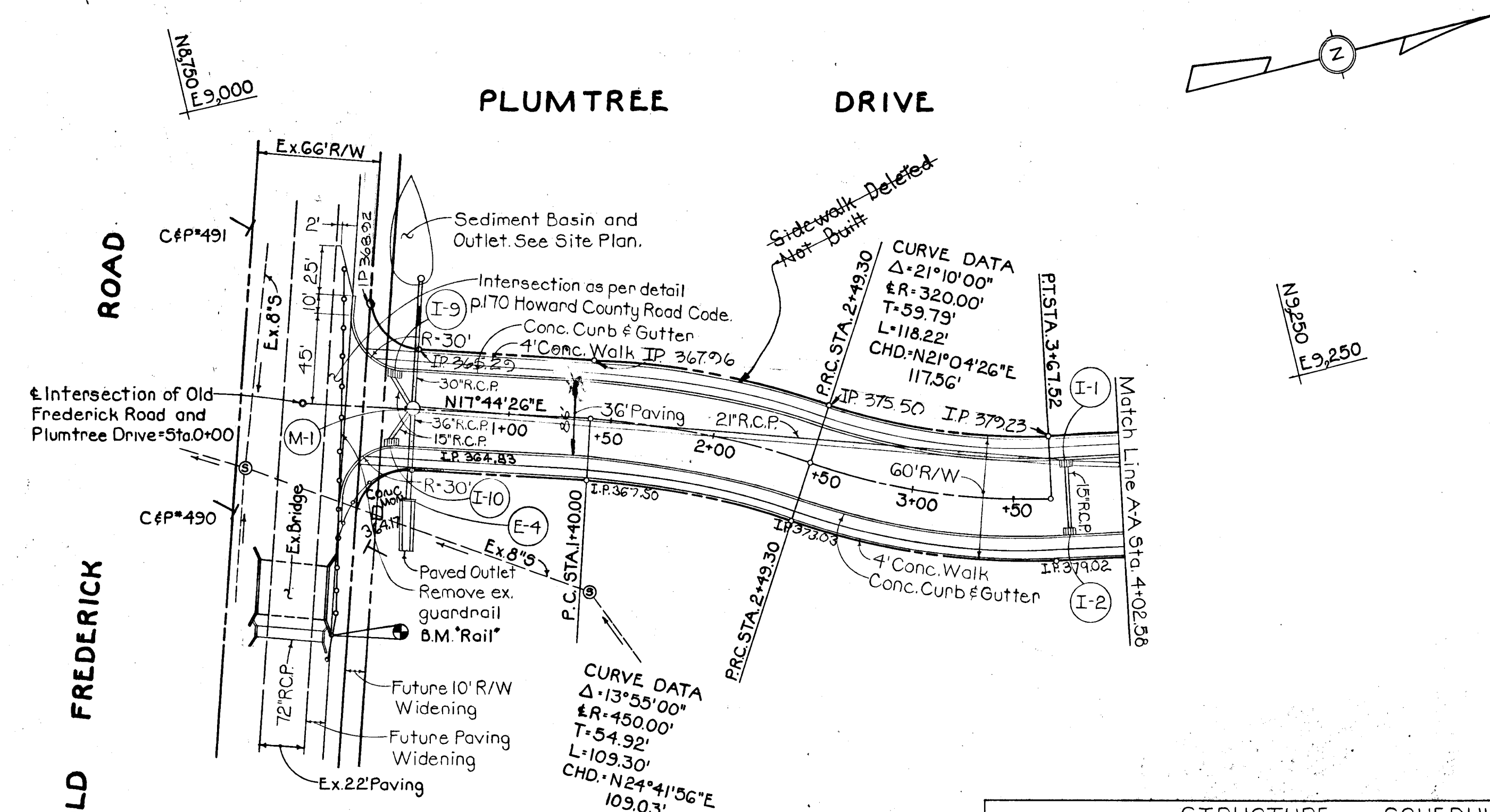


**BENCH MARK**  
 B.M. "Rail" Elev. 368.22  
 P.K. Nail in top of first guard rail post  
 East of bridge on Old Frederick Road.



**STRUCTURE SCHEDULE**

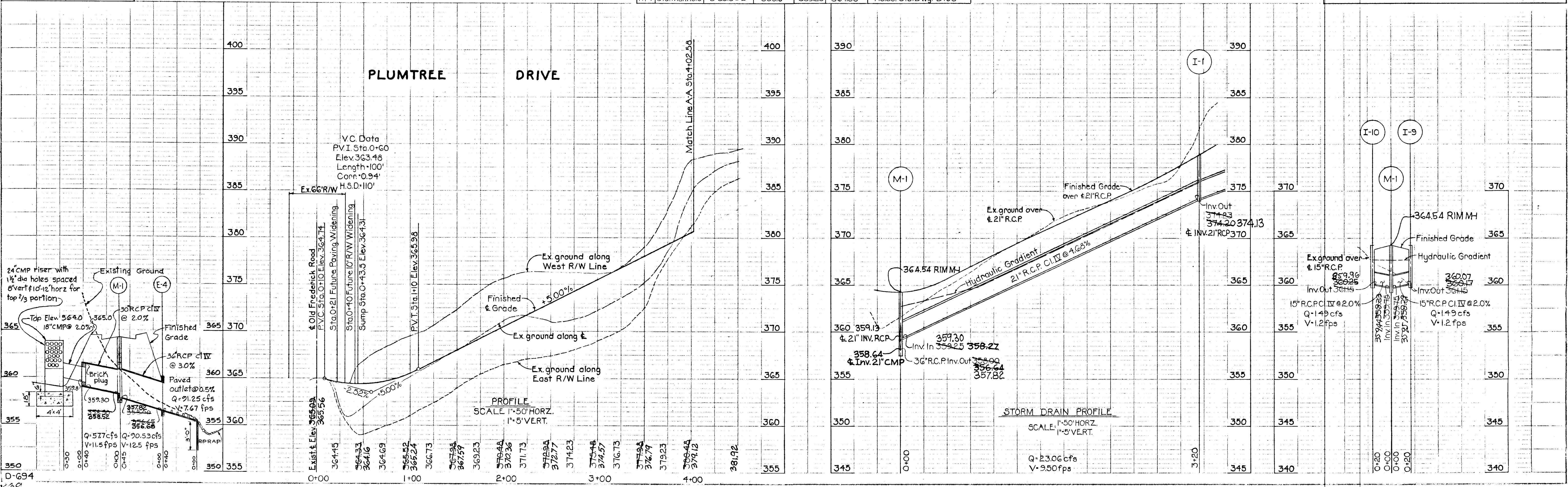
No.	Type	Location	Inv. Out	Inv. In	T.C. Elev.	Remarks
I-1	5-Comb.	3+77.1	374.23	374.33	379.37	Ho. Co. Std. Dwg. SDD 44
I-9	5-Comb.	0+43.5	361.15	—	364.35	Ho. Co. Std. Dwg. SDD 44
I-10	5-Comb.	0+43.5	361.15	—	364.35	Ho. Co. Std. Dwg. SDD 44
M-1	Std. Manhole	0+55.5	358.0	359.25	364.38	Ho. Co. Std. Dwg. D103

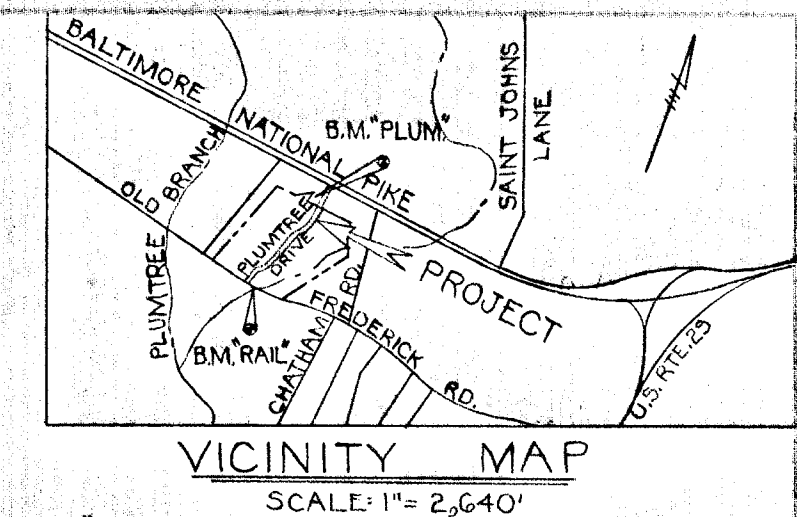
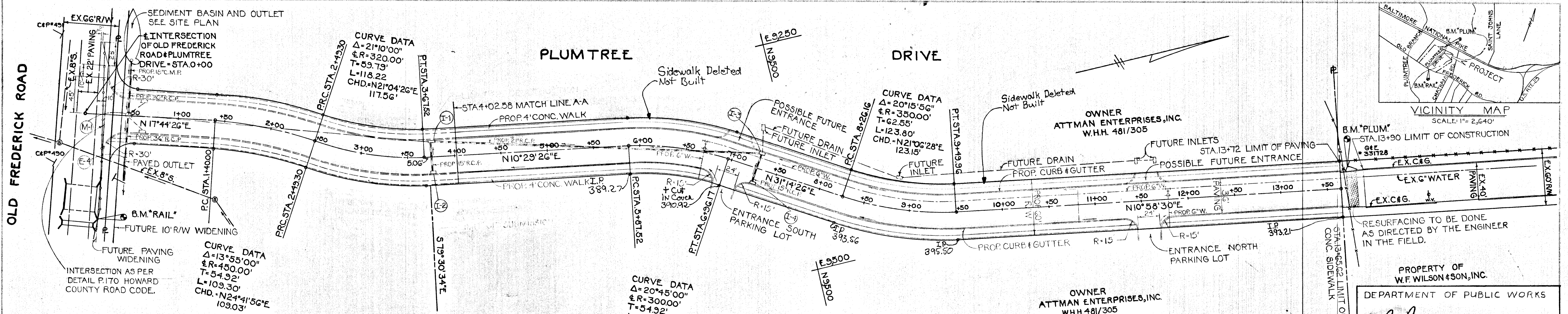
DEPARTMENT OF PUBLIC WORKS  
*B. H. Weiland* 11/17/71  
 CHIEF, BUREAU OF HIGHWAYS DATE

OFFICE OF PLANNING & ZONING  
*J. H. Clowry* 12-13-71  
 CHIEF ENGINEER, DIVISION OF LAND DEVELOPMENT AND TRANSPORTATION PLANNING DATE

**PLUMTREE DRIVE**  
 2ND ELECTION DISTRICT HOWARD COUNTY, MD.  
 ATTAMN ENTERPRISES INC.  
 153 EQUITABLE BLDG. 8-12 N. CALVERT STREET  
 BALTIMORE, MARYLAND \*21202  
 NOV. 11, 1971 SCALE: AS SHOWN

PURDUM & JESCHKE  
 CONSULTING ENGINEERS  
 & LAND SURVEYORS  
 1023 N. CALVERT STREET  
 BALTIMORE, MARYLAND





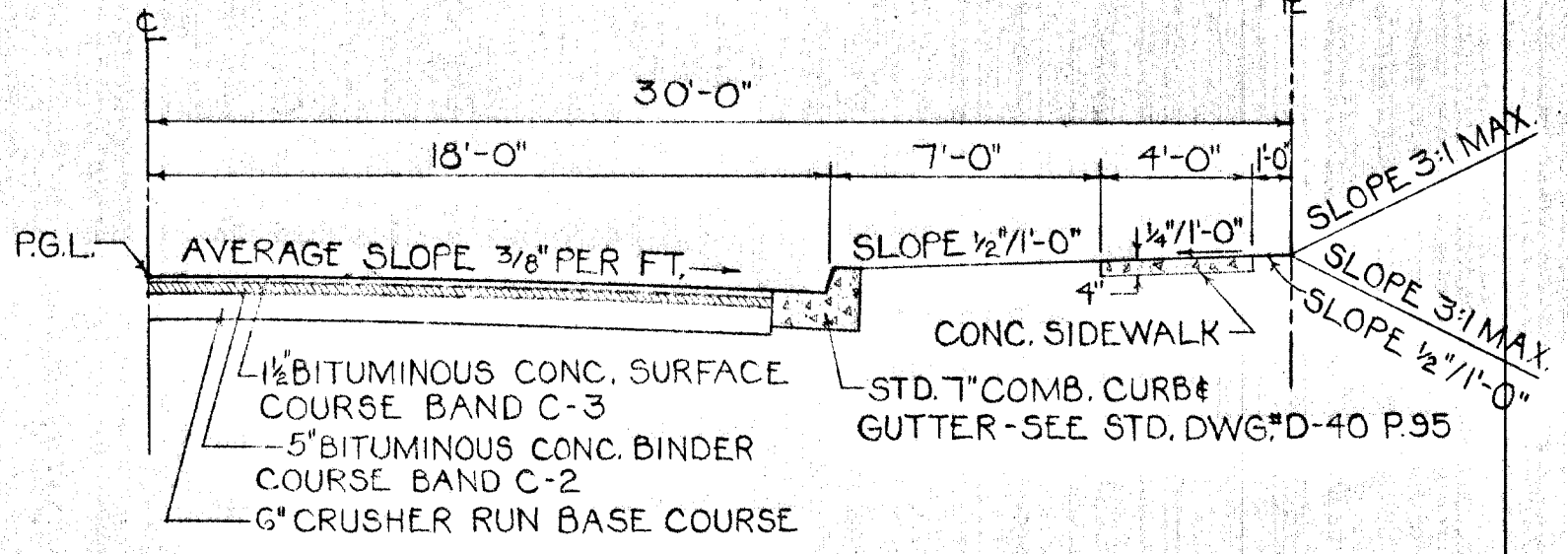
**BENCH MARKS**

B.M. "RAIL"	ELEV. 368.22
PK. Nail in top of first guard rail post East of bridge on Old Frederick Road.	
B.M. "PLUM"	ELEV. 394.38
2 cut nails in 6" E pole # 331728 & C#P#4 at end of Plumtree Drive.	

PLAN SCALE: 1"=50'

**GENERAL NOTES**

- Contractor shall notify the following utilities at least 3 days before starting work shown on this drawing. Bell Telephone System 539-9900 ext. 649 Long Distance Cable Div. 539-9900 ext. 553 Balto. Gas & Elect. Co. 539-8000 ext. 691
- All construction will be accomplished in accordance with Howard County Road Construction Code & Standard Specifications.
- See profile for entrance & locations.
- Design speed 25 mph.



TYPICAL HALF-SECTION, 36 PAVING, 60 R/W DRAWING D-17 P.72 SCALE 1"=5'

PROPERTY OF W.F. WILSON & SON, INC.

DEPARTMENT OF PUBLIC WORKS

*B. A. McKeand* 11/27/71  
CHIEF, BUREAU OF HIGHWAYS DATE

OFFICE OF PLANNING AND ZONING

*J. H. Clawson* 9-30-71  
CHIEF ENGINEER, DIVISION OF LAND USE DEVELOPMENT AND TRANSPORTATION PLANNING

**PLUMTREE DRIVE**

2ND. ELECTION DISTRICT HOWARD COUNTY, MD.  
ATTMAN ENTERPRISES, INC.  
153 EQUITABLE BLDG. 8-12 N. CALVERT STREET  
BALTIMORE, MARYLAND \* 21202

JULY 2, 1971 SCALE: AS SHOWN

**STRUCTURE SCHEDULE**

No.	Type	Location	Inv. In	Inv. Out	T.C. Elev.	Remarks
I-1	S-Comb Single Grate	3+77 Rt. &	374.33	374.23	379.37	Ho. Co. Std. Dwg. SDD-44
I-2	S-Comb Single Grate	3+77 Rt. &	—	375.11	379.37	Ho. Co. Std. Dwg. SDD-44
I-3	S-Comb Double Grate	7+30 Lt. &	386.90	386.40	391.98	Ho. Co. Std. Dwg. D-99 Page 154
I-4	S-Comb Double Grate	7+30 Rt. &	—	387.02	391.98	Ho. Co. Std. Dwg. D-99 Page 154

PURDUM & JESCHKE  
CONSULTING ENGINEERS  
& LAND SURVEYORS  
1023 N. CALVERT STREET  
BALTIMORE, MARYLAND

