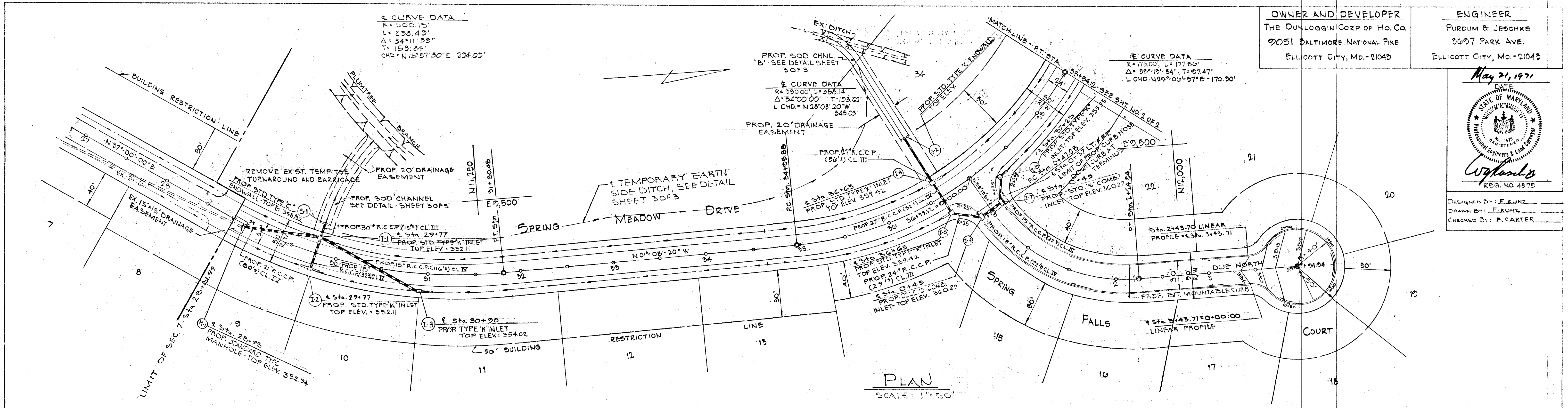


DATE	
BY	
REVISIONS	
NO.	
PLAN	
NOTED	
PT. OF WORK CHECKED	
NO.	

DATE	
BY	
REVISIONS	
NO.	
PROFILE	
NOTED	
PT. OF WORK CHECKED	
NO.	



OWNER AND DEVELOPER
THE DUNLOGGIN CORP. OF HO. CO.
9051 BALTIMORE NATIONAL PIKE
ELLICOTT CITY, MD.-21043

ENGINEER
PURDUM & JESCHKE
3607 PARK AVE.
ELLICOTT CITY, MD.-21043

May 21, 1971
DATE

DESIGNED BY: E. KUNZ
DRAWN BY: E. KUNZ
CHECKED BY: R. CARTER

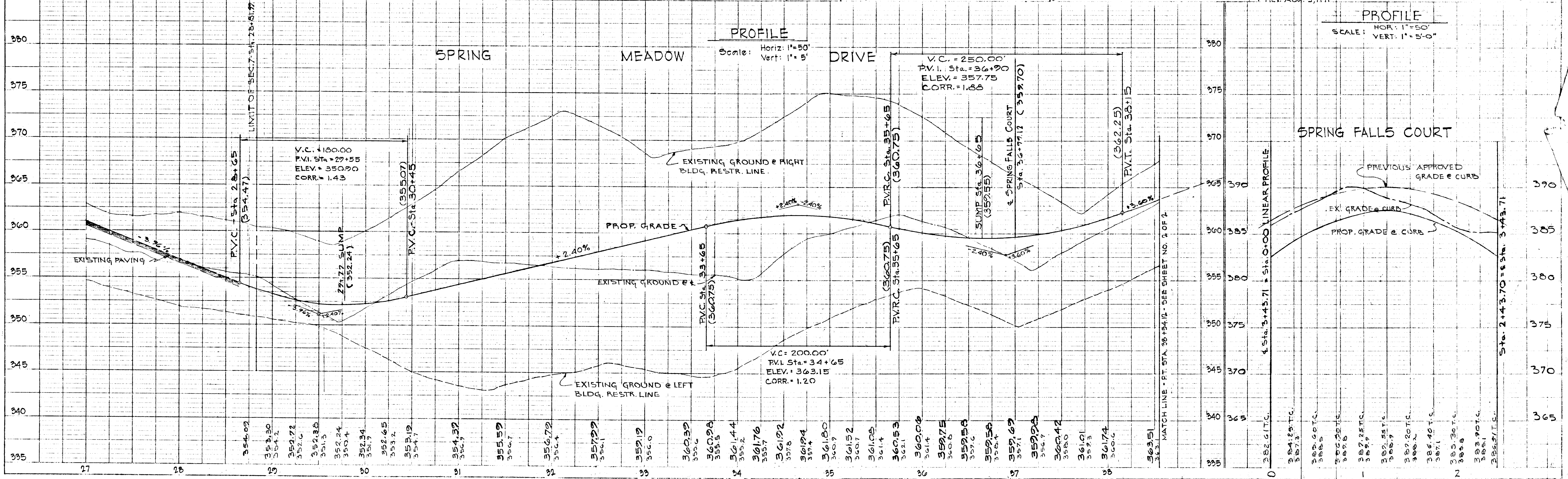
DEPARTMENT OF PUBLIC WORKS
OFFICE OF PLANNING AND ZONING

B. H. McKeand 7/28/71 *J. H. Clawson* 7-26-71
CHIEF, BUREAU OF HIGHWAYS DATE CHIEF, DIVISION OF LAND DEVELOPMENT AND TRANSPORTATION PLANNING DATE

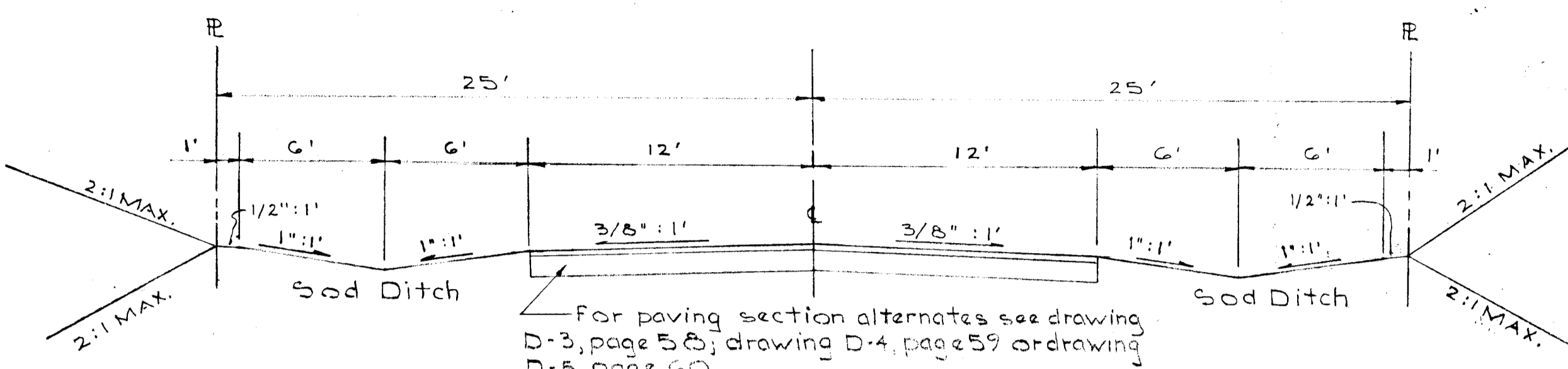
PLAN AND PROFILE: SPRING MEADOW DRIVE

SECTION No. 6
DUNLOGGIN II
2ND ELECTION DISTRICT
MAY 20, 1971
REV. AUG. 5, 1971

HOWARD COUNTY, MD.
SCALE: AS SHOWN
SHEET 1 OF 3



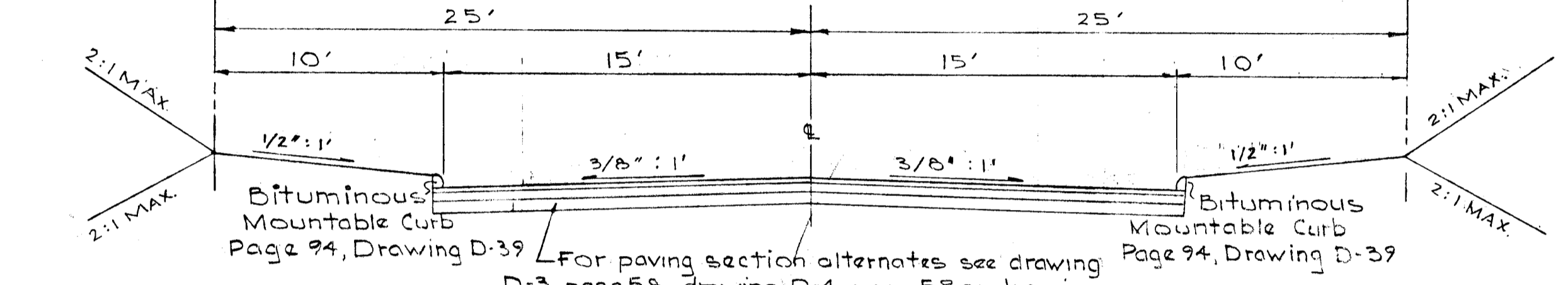
SPRING MEADOW DRIVE
50' RIGHT OF WAY
Zoned: R-20 - Speed Limit: 30 M.P.H.



For paving section alternates see drawing D-3, page 58; drawing D-4, page 59 or drawing D-5, page 60.

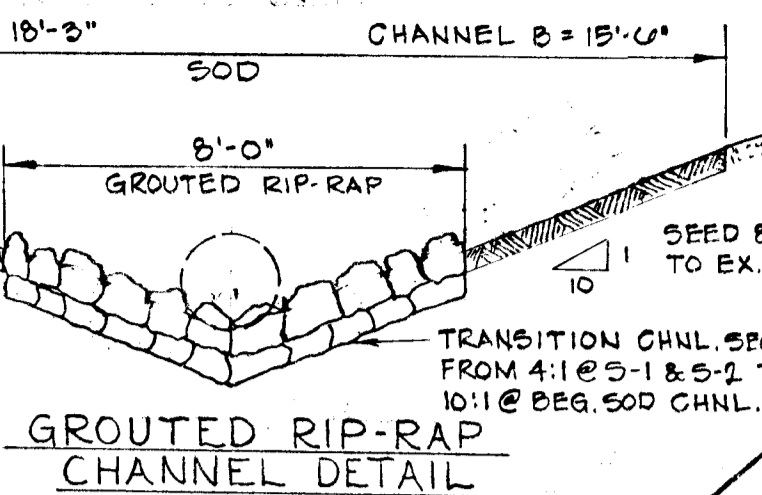
TYPICAL SECTION
NO SCALE

SPRING FALLS COURT
50' RIGHT OF WAY
Zoned: R-20 - Speed Limit: 25 M.P.H.



For paving section alternates see drawing D-3, page 58; drawing D-4, page 59 or drawing D-5, page 60.

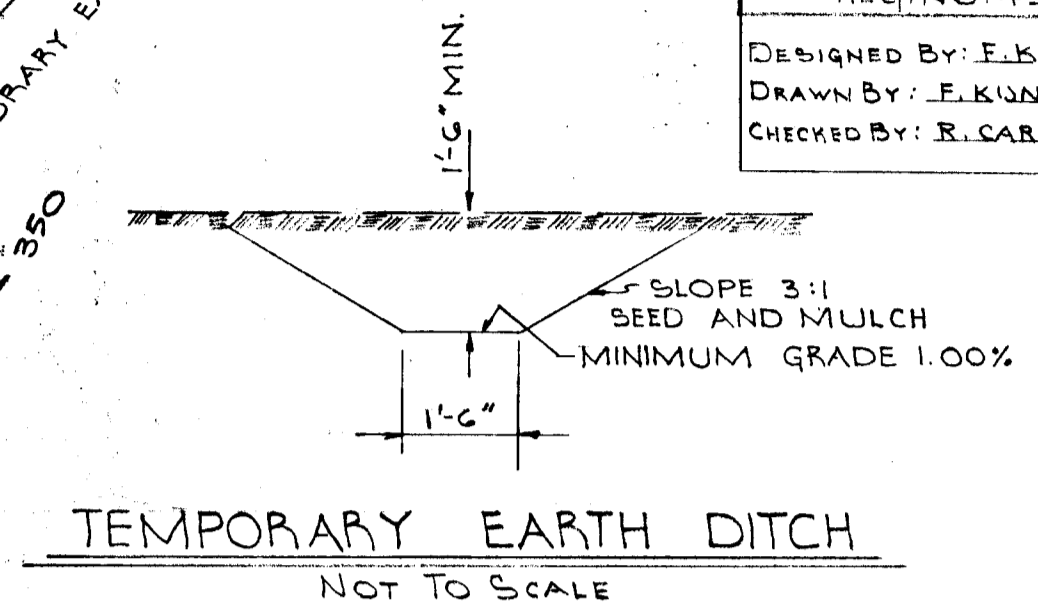
TYPICAL SECTION
NO SCALE



GRouted RIP-RAP CHANNEL DETAIL

NOTE: UPON COMPLETION OF CONSTRUCTION TEMPORARY SEDIMENT BASIN SHALL BE REMOVED AND DISTURBED AREA SHALL BE RESTORED TO ORIGINAL GRADE. THE CONTRACTOR SHALL NOTIFY THE HOWARD COUNTY SOIL CONSERVATION DISTRICT PRIOR TO REMOVAL.

SEDIMENT BASIN PLAN
SCALE: 1"=50'



TEMPORARY EARTH DITCH
NOT TO SCALE

May 21, 1971

DESIGNED BY: E. KUNZ
DRAWN BY: E. KUNZ
CHECKED BY: R. CARTER

"I CERTIFY THAT ALL DEVELOPMENT AND/OR CONSTRUCTION WILL BE DONE ACCORDING TO THIS PLAN OF DEVELOPMENT AND PLAN OF SILT AND SEDIMENT CONTROL."

THE DISTRICT ENGINEER OF HOWARD COUNTY
REVIEWED: [Signature] DATE: 5/17/71

"I CERTIFY THAT THE PLAN OF DEVELOPMENT AND THE PLAN FOR CONTROL OF SILT AND EROSION MEETS THE REQUIREMENTS, STANDARDS AND SPECIFICATIONS OF THE HOWARD COUNTY SOIL CONSERVATION DISTRICT."

WILLIAM G. JESCHKE II
REVIEWED: [Signature] DATE: May 21, 1971

THIS DEVELOPMENT PLAN IS APPROVED FOR SOIL EROSION AND SEDIMENT CONTROL BY THE HOWARD COUNTY SOIL CONSERVATION DISTRICT.

APPROVED: [Signature] DATE: [Blank]

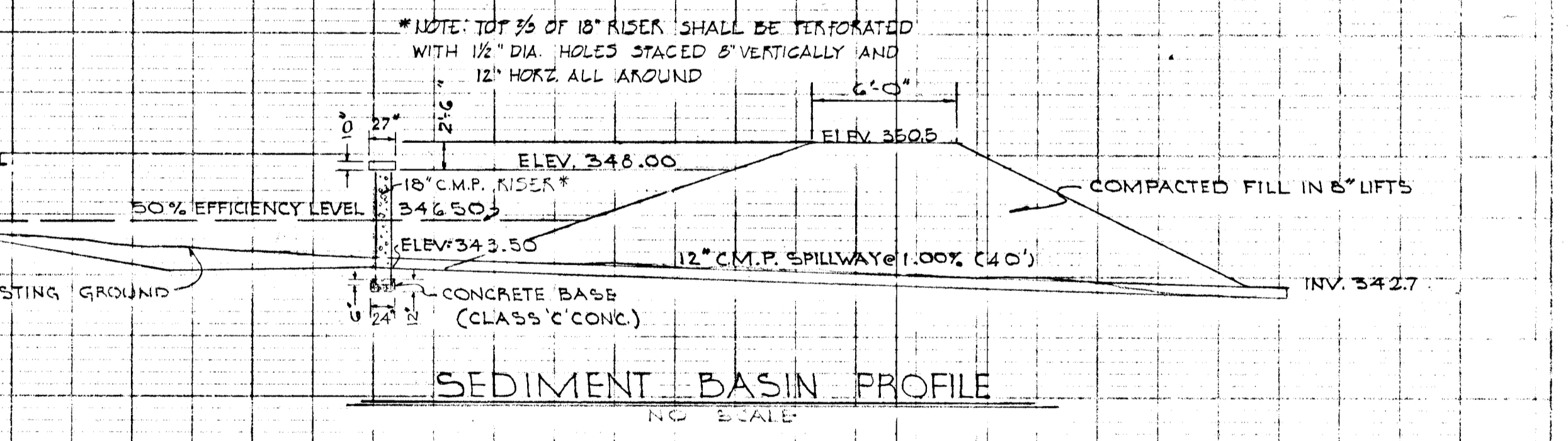
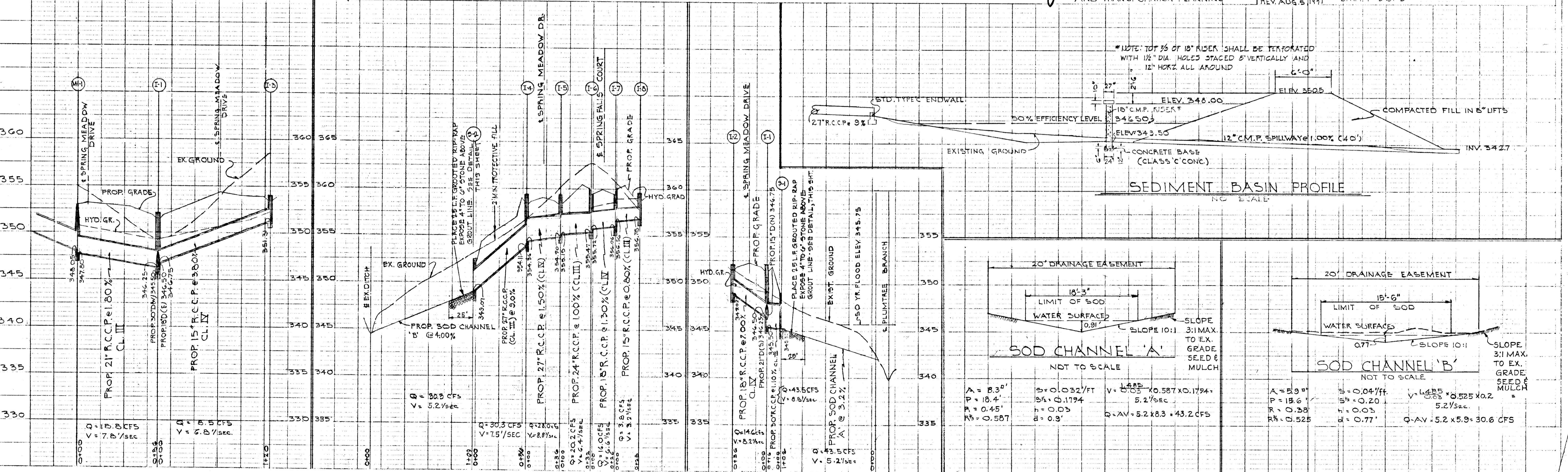
DEPARTMENT OF PUBLIC WORKS:
S. N. McKeand 7/20/71
CHIEF, BUREAU OF HIGHWAYS
OFFICE OF PLANNING AND ZONING

OWNER AND DEVELOPER
THE DUNLOGGIN CORP. OF MD. CO.
9051 BALTIMORE NATIONAL PIKE
ELLICOTT CITY, MD. - 21043

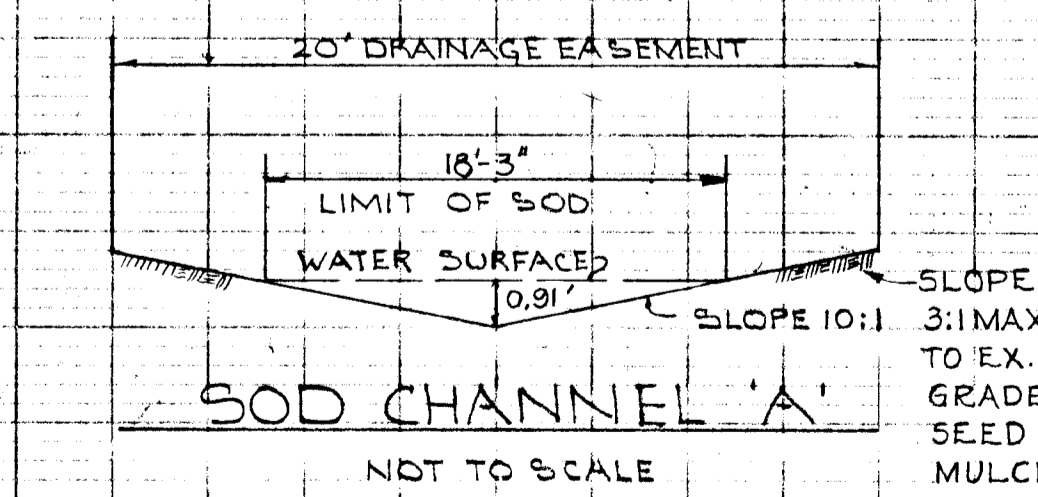
PURDUM & JESCHKE
ENGINEERS AND LAND SURVEYORS
3627 PARK AVE.
ELLICOTT CITY, MD. - 21043

J. H. Clawson 7-26-71
CHIEF, DIVISION OF LAND DEVELOPMENT AND TRANSPORTATION PLANNING

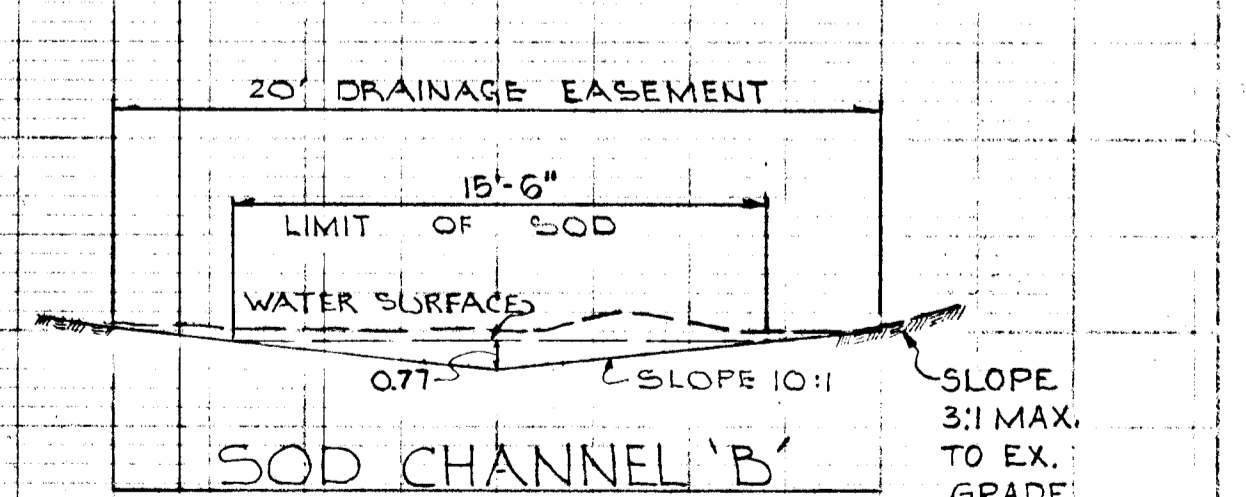
DETAIL SHEET:
SECTION NO. 6
DUNLOGGIN II
2ND ELECTION DISTRICT
MAY 20, 1971
SCALE: AS SHOWN
REV. AUG. 5, 1971 SHEET 3 OF 3



SEDIMENT BASIN PROFILE
NO SCALE



SOD CHANNEL 'A'
NOT TO SCALE



SOD CHANNEL 'B'
NOT TO SCALE

$A = 8.3'$	$B = 0.032'/ft$	$V = 0.05 \times 0.587 \times 0.1794 = 5.2'/sec$	$A = 5.9'$	$B = 0.04'/ft$	$V = 0.05 \times 0.525 \times 0.2 = 5.2'/sec$
$P = 18.4'$	$R = 0.1794$	$Q = AV = 5.2 \times 8.3 = 43.2 CFS$	$P = 18.6'$	$R = 0.20$	$Q = AV = 5.2 \times 5.9 = 30.6 CFS$
$R = 0.45'$	$h = 0.03$		$R = 0.28'$	$h = 0.03$	
$R = 0.587$	$d = 0.9'$		$R = 0.525$	$d = 0.77'$	

PLAN

DATE	
BY	
SURVEYED	
GRADES CHECKED	
NOTE BOOK	
STAKE-OUT WITH AS DIV.	
NO.	

PROFILE

DATE	
BY	
SURVEYED	
GRADES CHECKED	
NOTE BOOK	
STAKE-OUT WITH AS DIV.	
NO.	