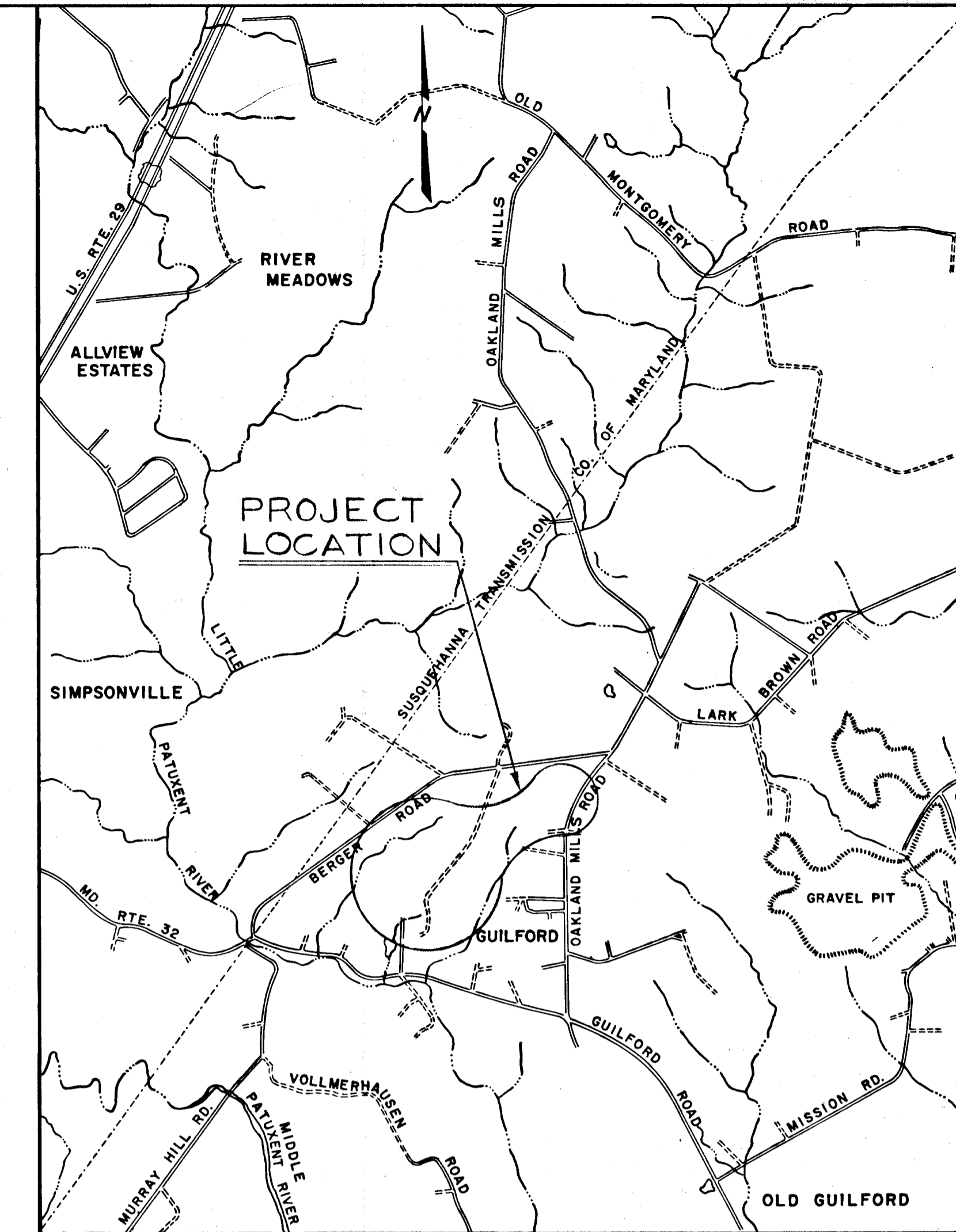


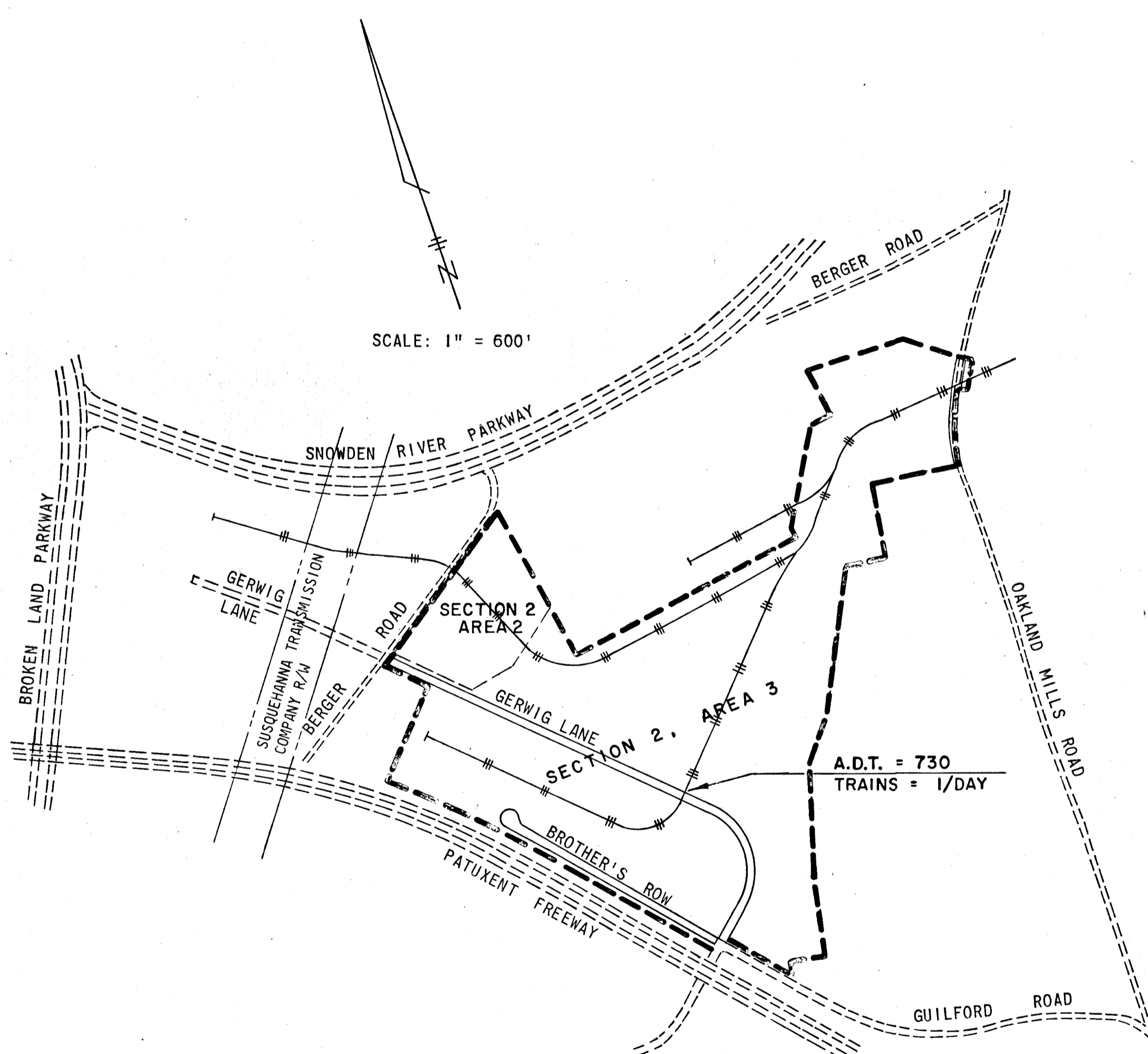
COLUMBIA

ELECTION DISTRICT 6

E.G.U. SUBDIVISION - SECTION 2, AREA 3
 & LOTS 16 & 17, A RESUBDIVISION OF LOTS 11 & 12, SECTION 2, AREA 2
 HOWARD RESEARCH & DEVELOPMENT CORP.
 HOWARD COUNTY, MARYLAND



VICINITY MAP
 SCALE: 1" = 2000'



SCALE: 1" = 600'

SHEET INDEX	
SHEET	DESCRIPTION
1	TITLE SHEET & VICINITY MAP
2	TYPICAL SECTIONS & DETAIL
3	DRAINAGE AREA MAP
4	GERWIG LANE - PLAN & PROFILE STA. 73+00 TO STA. 61+00
5	GERWIG LANE - PLAN & PROFILE STA. 61+00 TO STA. 49+00
6	GERWIG LANE - PLAN & PROFILE STA. 49+00 TO STA. 42+00
7	BROTHER'S ROW - PLAN & PROFILE STA. 27+00 TO STA. 33+00
8	BROTHER'S ROW - PLAN & PROFILE STA. 33+00 TO STA. 42+00
9	OAKLAND MILLS - PLAN & PROFILE STA. 75+75 TO STA. 83+00
10	ON SITE STORM DRAINS - PLAN & PROFILE
11	ON SITE STORM DRAINS - PLAN & PROFILE
14A	DRAINAGE DETAILS

GENERAL NOTES

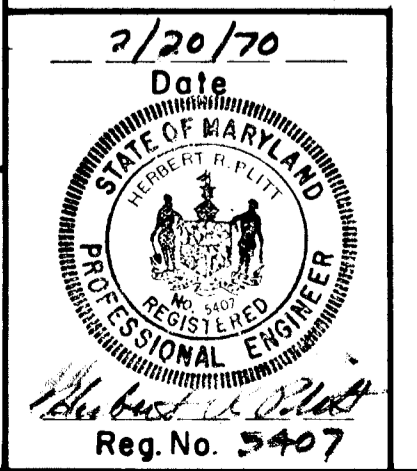
- APPROXIMATE LOCATION OF EXISTING UTILITIES ARE SHOWN. THE CONTRACTOR SHALL TAKE ALL NECESSARY PRECAUTION TO PROTECT THE EXISTING UTILITIES AND TO MAINTAIN UNINTERRUPTED SERVICE. ANY DAMAGE INCURRED DUE TO CONTRACTOR'S OPERATIONS SHALL BE REPAIRED IMMEDIATELY AT THE CONTRACTOR'S EXPENSE.
- THE CONTRACTOR SHALL TEST PIT EXISTING UTILITIES, WHERE DIRECTED BY THE ENGINEER, A MINIMUM OF TWO WEEKS IN ADVANCE OF CONSTRUCTION OPERATIONS.
- FOR ALL DETAILS NOT SHOWN ON DRAWINGS, SEE HOWARD COUNTY ROAD CONSTR. CODE AND STD. SPECS. AS REVISED AUGUST 6, 1968.
- TREES ARE TO BE PROTECTED AGAINST DAMAGE TO THE MAXIMUM EXTENT REASONABLE. TREES WHICH ARE TO REMAIN IN STREETS AND OTHER RIGHTS OF WAY WILL BE MARKED BY THE ENGINEER PRIOR TO COMMENCING OF CONSTRUCTION OPERATIONS.
- DEVELOPER WILL PLACE ROADS TO SUBGRADE FOR THE FULL WIDTH OF THE RIGHT OF WAY BEFORE INSTALLATIONS OF UTILITIES.
- THE DEVELOPER SHALL ACCOMPLISH ALL GRADING WITHIN EASEMENT AREAS WHERE UTILITIES ARE TO BE INSTALLED BEFORE NOTICE TO PROCEED WILL BE ISSUED.
- CONTRACTOR TO NOTIFY THE FOLLOWING UTILITIES AT LEAST THREE DAYS BEFORE STARTING WORK SHOWN ON THIS/ THESE DRAWINGS:
 BELL TELEPHONE SYSTEM 393-3649
 LONG DISTANCE CABLE DIVISION 393-3553 OR 3554
 BALTIMORE GAS & ELECTRIC CO. 539-8000 EXT. 691
- ALL DETAILS ARE FROM THE "ROAD CONSTRUCTION CODE AND STANDARD SPECIFICATIONS" ISSUED OR APPROVED BY THE COUNTY COMMISSIONERS AND THE HOWARD COUNTY ROAD DEPARTMENT.
- ALL LOCAL ROADS ARE DESIGNED FOR 30 M.P.H. TRAFFIC SPEED IN ACCORDANCE WITH THE AMERICAN ASSOCIATION OF STATE HIGHWAY OFFICIAL STANDARDS.
- ALL ELEVATIONS SHOWN ARE BASED ON U.S.C. AND G.S. MEAN SEA LEVEL DATUM 1929.
- ALL INLET BOXES AND MANHOLES TO HAVE A MINIMUM OF 8" CONCRETE FOOTER.
- TEMPORARY, COMPACTED, 18 INCH HIGH, EARTH FILLED DIVERSION BERMS SHOULD BE CONSTRUCTED ABOVE THE LIPS OF FILL SLOPES ON THE R-O-W CONCURRENTLY WITH THE INITIAL GRADING AND DIRECTED TO UNDISTURBED SOG AREAS.
- ALL SWALES SHALL BE SODDED AND TAMPED, AND ALL SLOPES SHALL BE SEEDDED OR SODDED IN CONJUNCTION WITH THE HOWARD COUNTY SOIL CONSERVATION SERVICE AND THE HOWARD COUNTY PLANNING BOARD.

Benchmarks: ① DR NAIL @ STA. 73+17.33
 & STA. 12+58.46 BERGER RD. ELEV. 32.155
 ② X-CUT IN CONC. TRANSFORMER PAD RT. SIDE GERWIG LANE NEAR STA. 55+00. ELEV. 134.50
 ③ PUNCH ON RIM WATER M. @ 37' LT. & STA. 8124, OAKLAND MILLS RD.

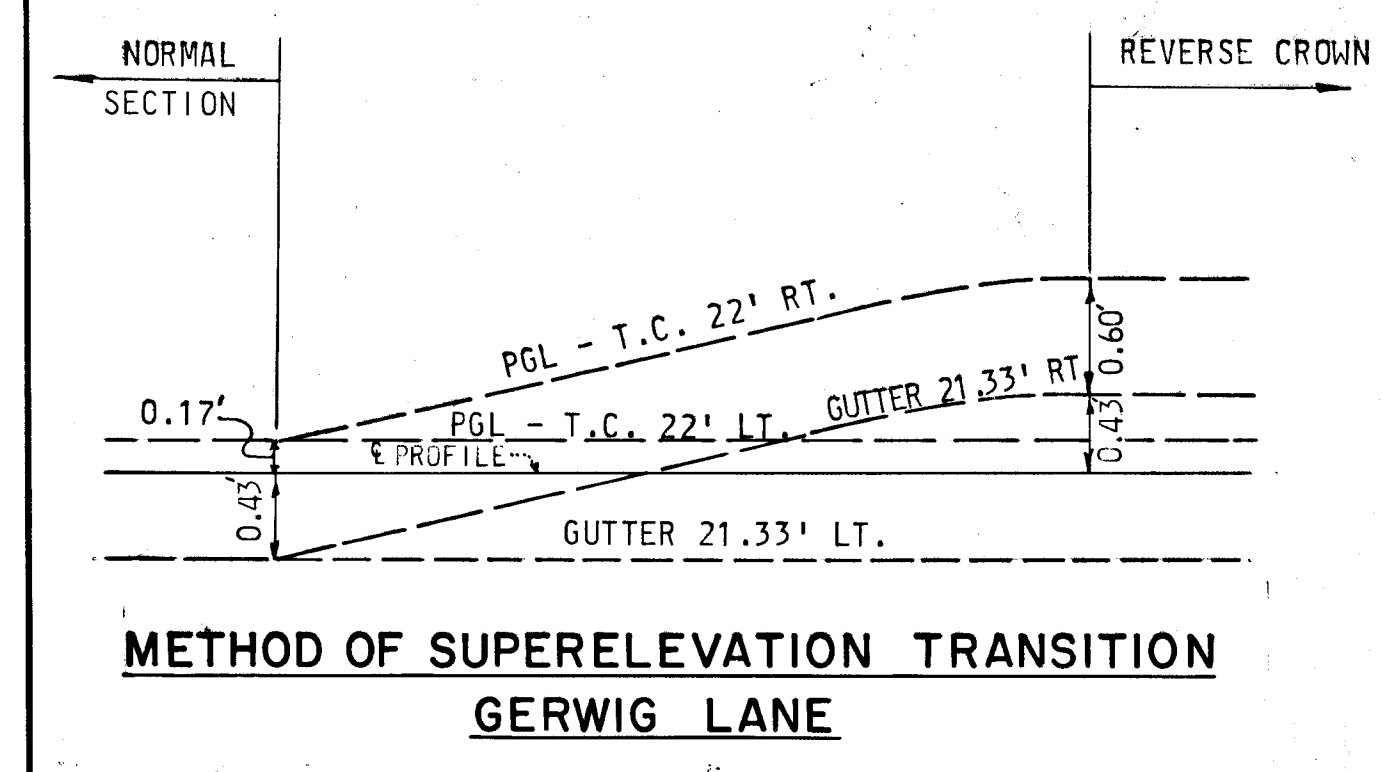
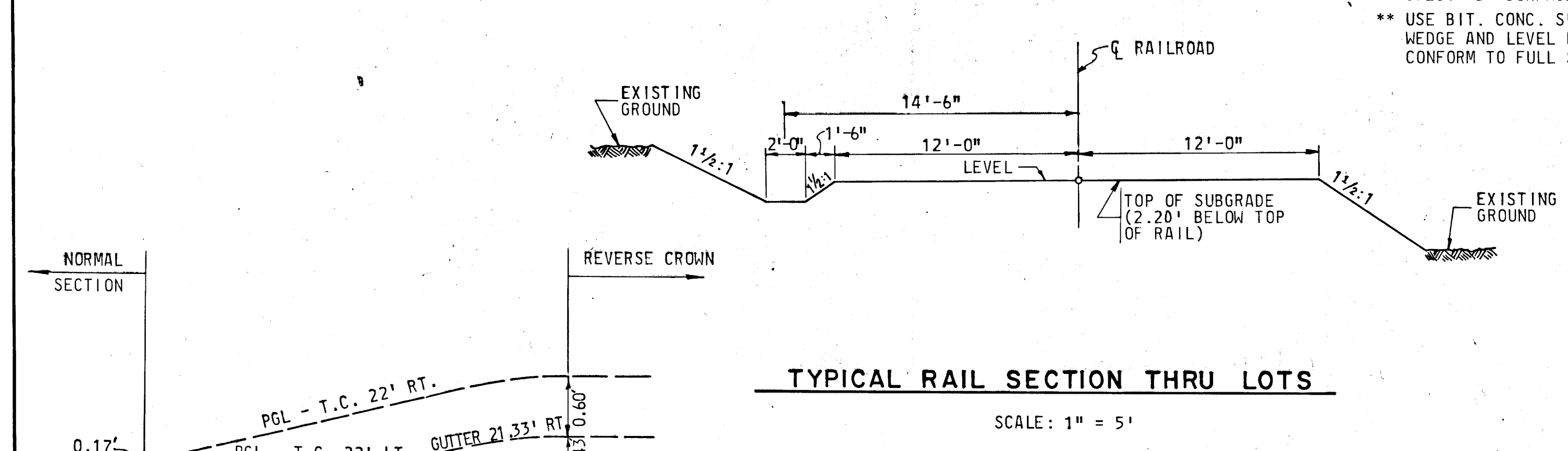
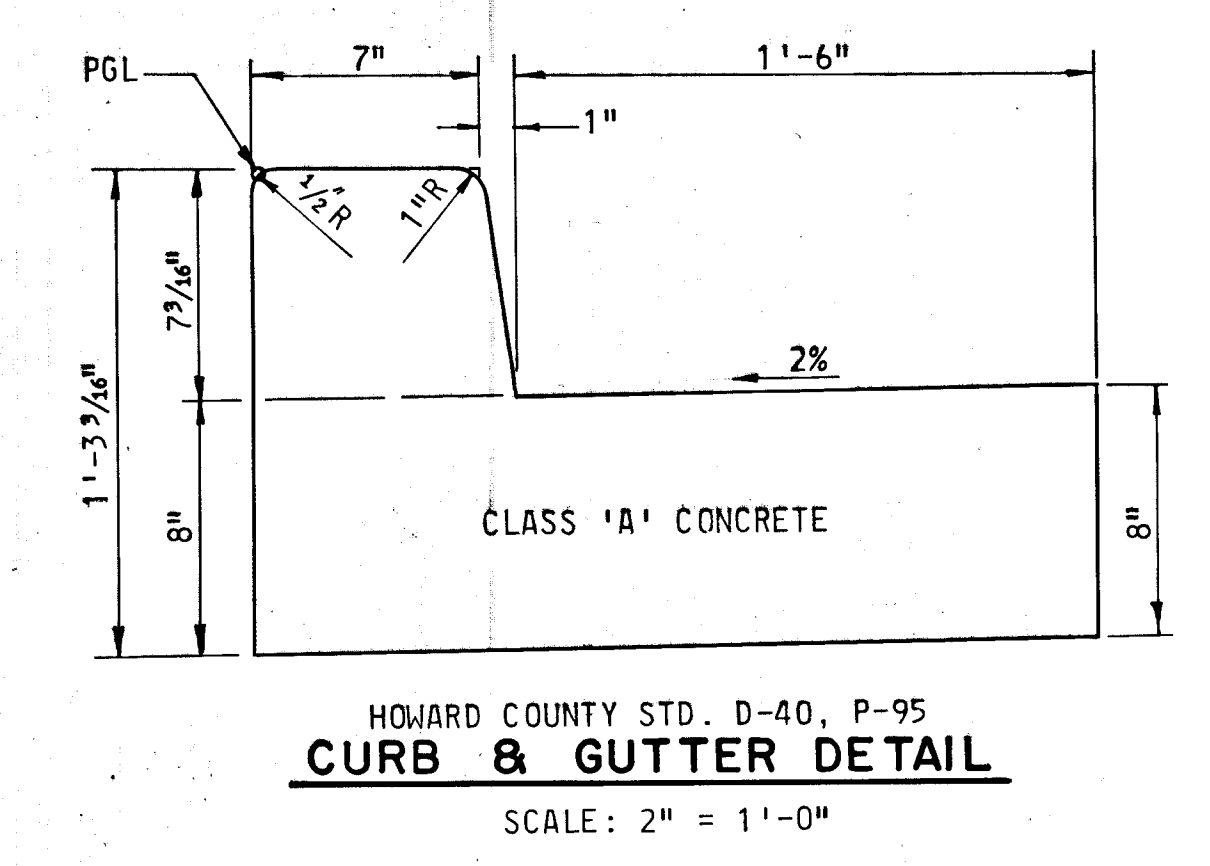
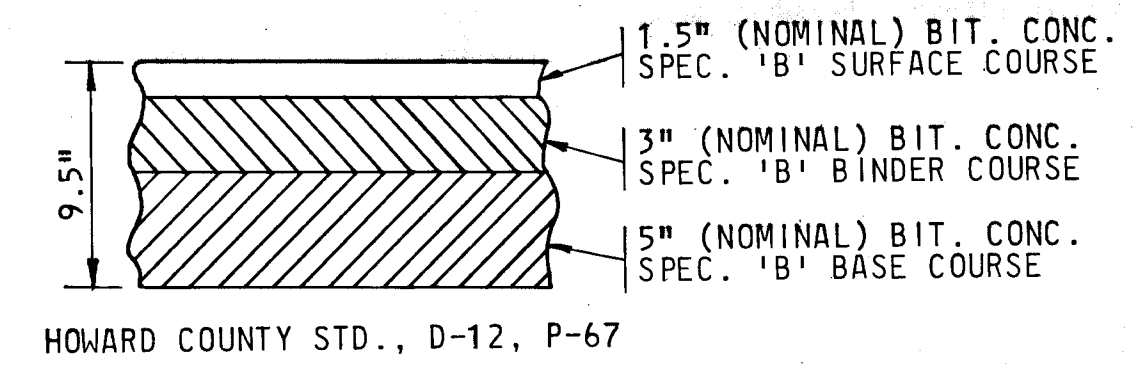
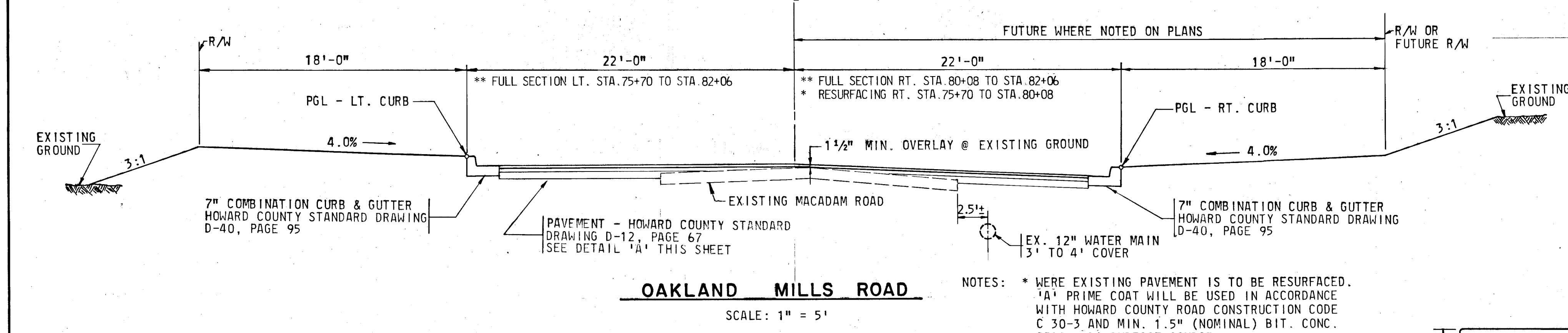
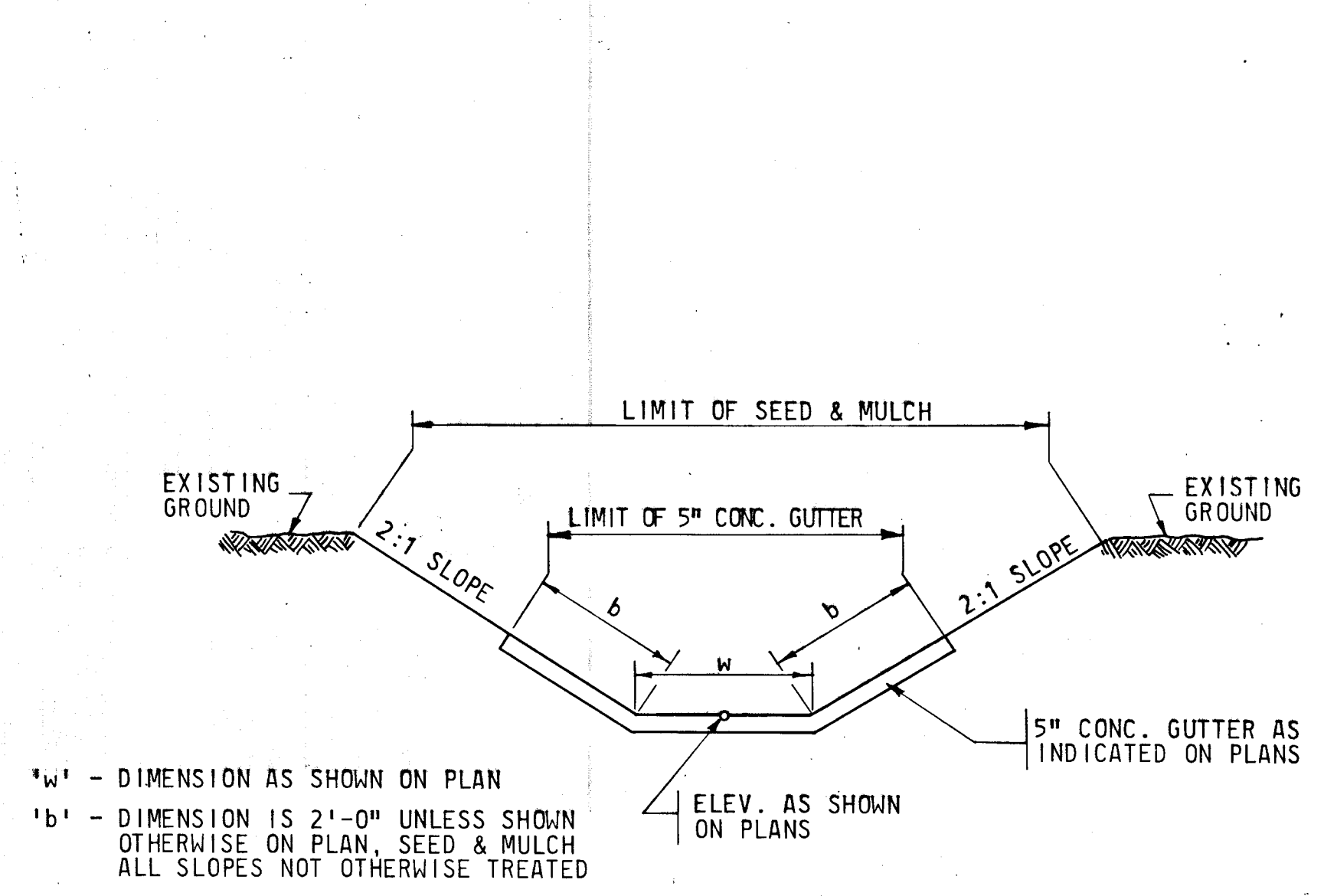
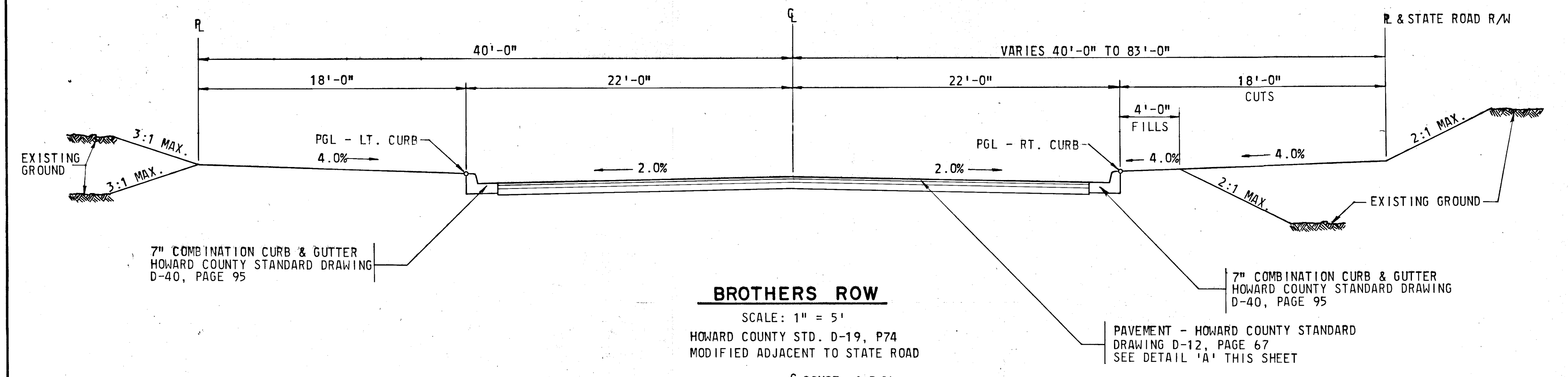
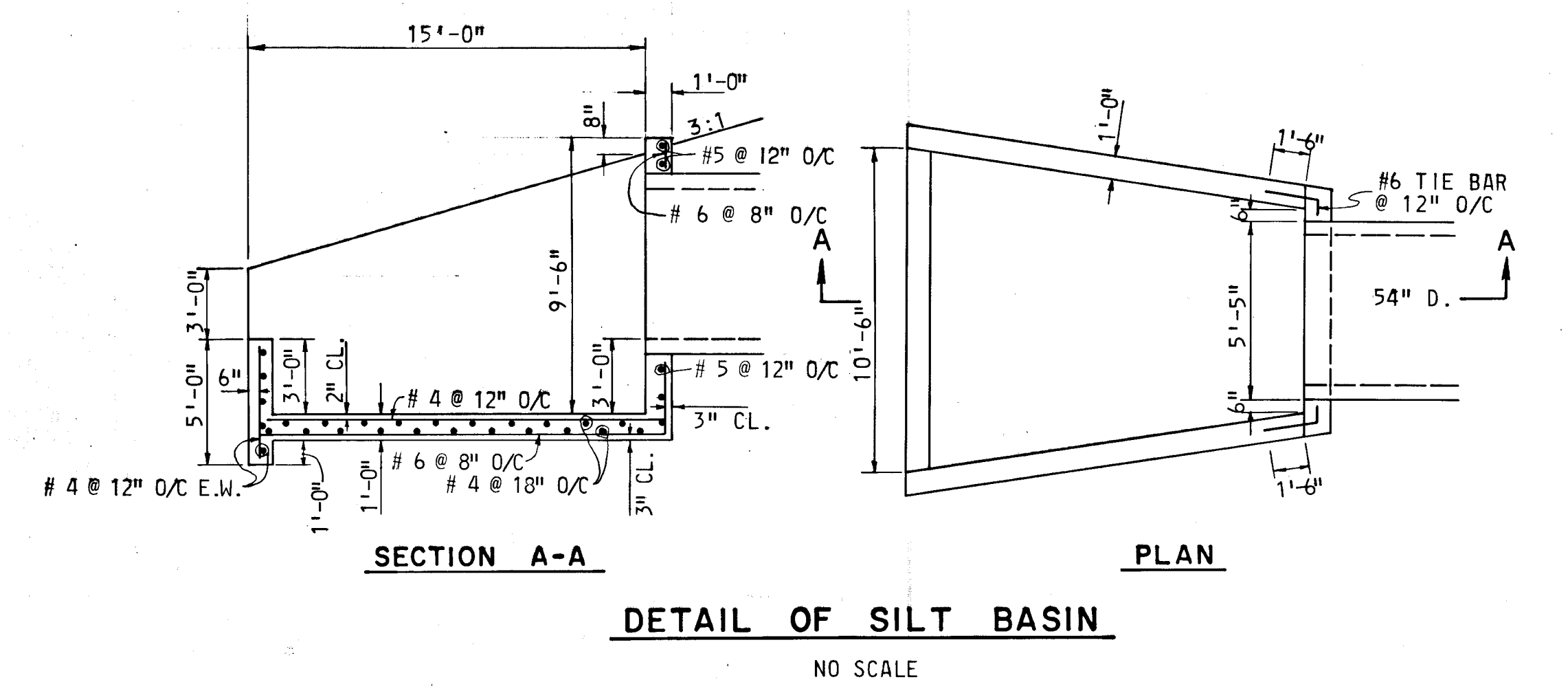
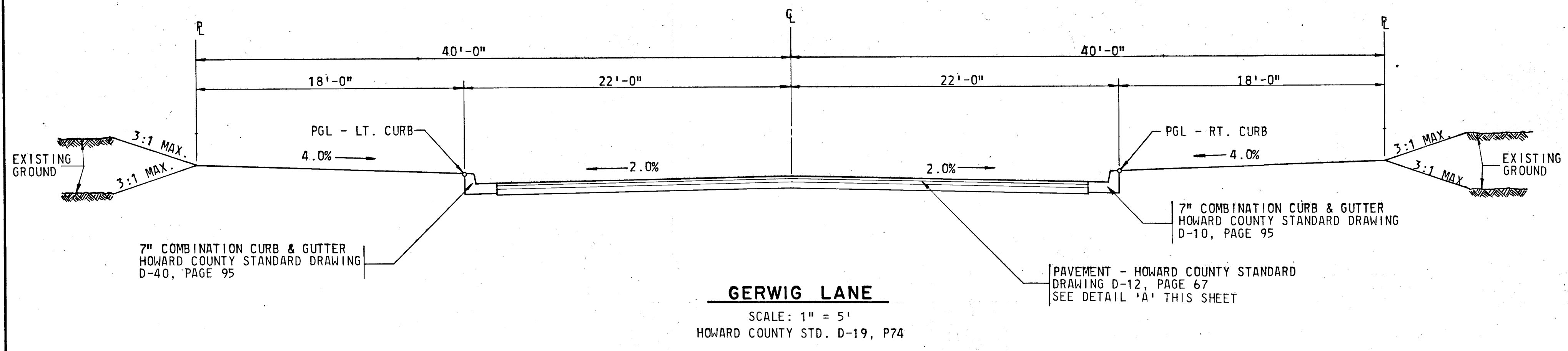
DEPARTMENT OF PUBLIC WORKS
Francis M. Neeland 9/29/70
 CHIEF, BUREAU OF HIGHWAYS DATE

OFFICE OF PLANNING AND ZONING
J. J. Clowry 9-25-70
 CHIEF ENGINEER, DIVISION OF LAND DEVELOPMENT DATE

GREEN ASSOCIATES, INC.
 CONSULTING ENGINEERS
 1130 N. CHARLES ST.
 BALTIMORE, MARYLAND



5-25-88 S. BUREAU



PAVING DETAIL 'A'
SCALE: 1 1/2" = 1'-0"

HOWARD COUNTY STD. D-40, P-95
CURB & GUTTER DETAIL
SCALE: 2" = 1'-0"

TYPICAL RAIL SECTION THRU LOTS
SCALE: 1" = 5'

METHOD OF SUPERELEVATION TRANSITION
GERWIG LANE

DEPARTMENT OF PUBLIC WORK
Drewville N. Weiland 9/29/70
CHIEF, BUREAU OF HIGHWAYS DATE

OFFICE OF PLANNING AND ZONING
J.H. Clawson 9-25-70
CHIEF ENGINEER, DIVISION OF LAND DEVELOPMENT DATE

Rev. Date	Rev. No.	Revision Description

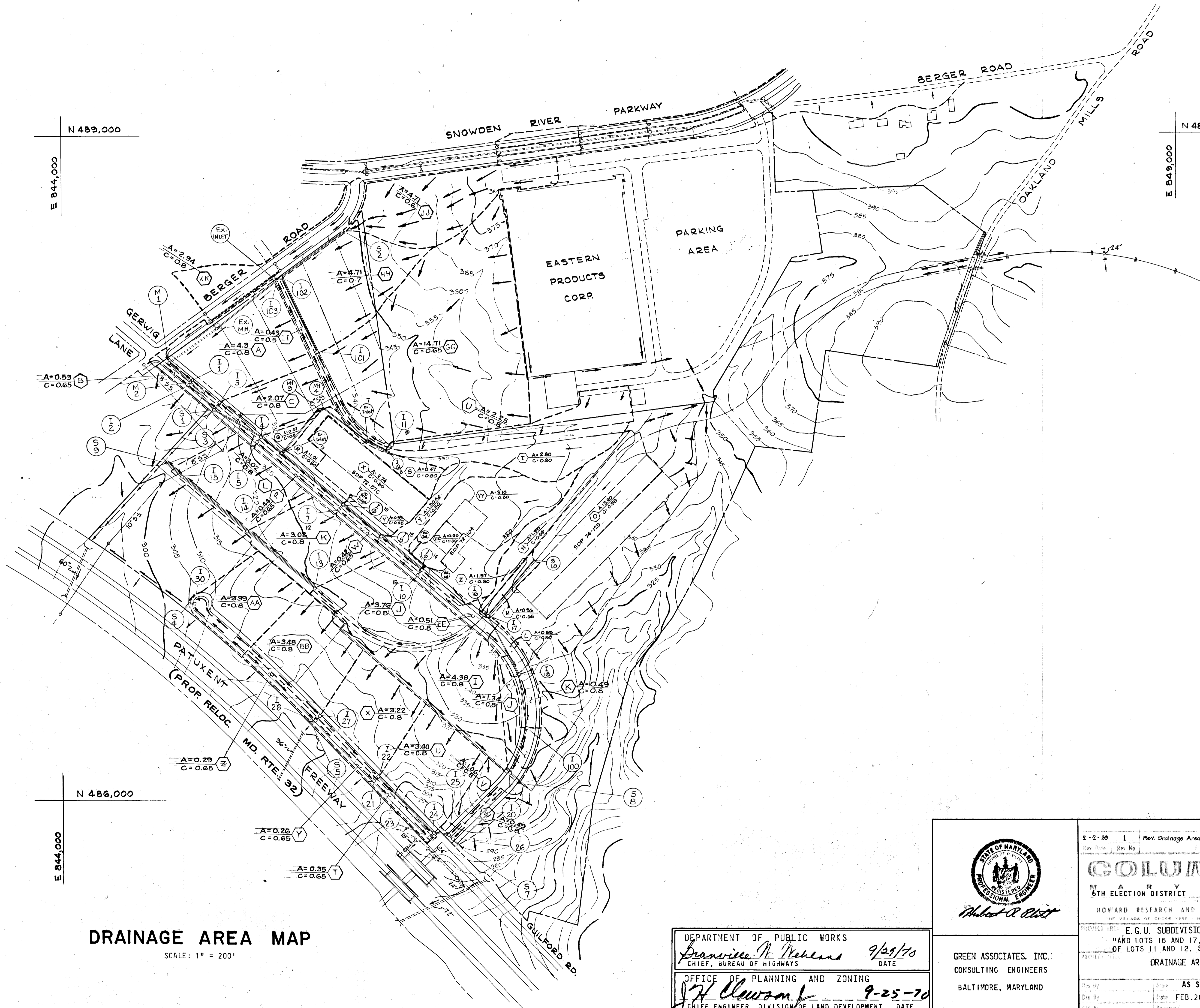
COLUMBIA
MARYLAND
6TH ELECTION DISTRICT HOWARD COUNTY

HOWARD RESEARCH AND DEVELOPMENT CORP.
THE VILLAGE OF CROWN KEYS - BETHESDA, MARYLAND 20814

PROJECT AREA: E.G.U. SUBDIVISION - SECTION 2, AREA 3
AND LOTS 16 AND 17, A RESUBDIVISION
OF LOTS 11 AND 12, SECTION 2, AREA 2"

PROJECT TITLE: **TYPICAL SECTIONS & DETAILS**

Prep. By	Scale	AS SHOWN	Draw. No.	2 of 11
Des. By	Date	FEB. 20, 1970	CCF No.	
Appr. By	Approved			



N 489,000
E 844,000

N 489,000
E 849,000

N 486,000
E 844,000

DRAINAGE AREA MAP

SCALE: 1" = 200'

DEPARTMENT OF PUBLIC WORKS
Francisco N. Nichols 9/29/70
 CHIEF, BUREAU OF HIGHWAYS DATE

OFFICE OF PLANNING AND ZONING
J. H. Clowson 9-25-70
 CHIEF ENGINEER, DIVISION OF LAND DEVELOPMENT DATE

	2-2-89 1 Rev. Drainage Areas + New Ex. System
	Rev. Date Rev No
COLUMBIA MARYLAND 6TH ELECTION DISTRICT HOWARD COUNTY HOWARD RESEARCH AND DEVELOPMENT CORP. THE VILLAGE OF DOCKS NEVE BALTIMORE MARYLAND 21210	
PROJECT AREA: E. G. U. SUBDIVISION - SECTION 2, AREA 3 "AND LOTS 16 AND 17, A RESUBDIVISION OF LOTS 11 AND 12, SECTION 2, AREA 2"	
PROJECT TITLE: DRAINAGE AREA MAP	
Des. By	Scale AS SHOWN Page No. 3 of 11
Drawn By	Date FEB. 20, 1970 C.C.F. No.
Chk. By	Approved

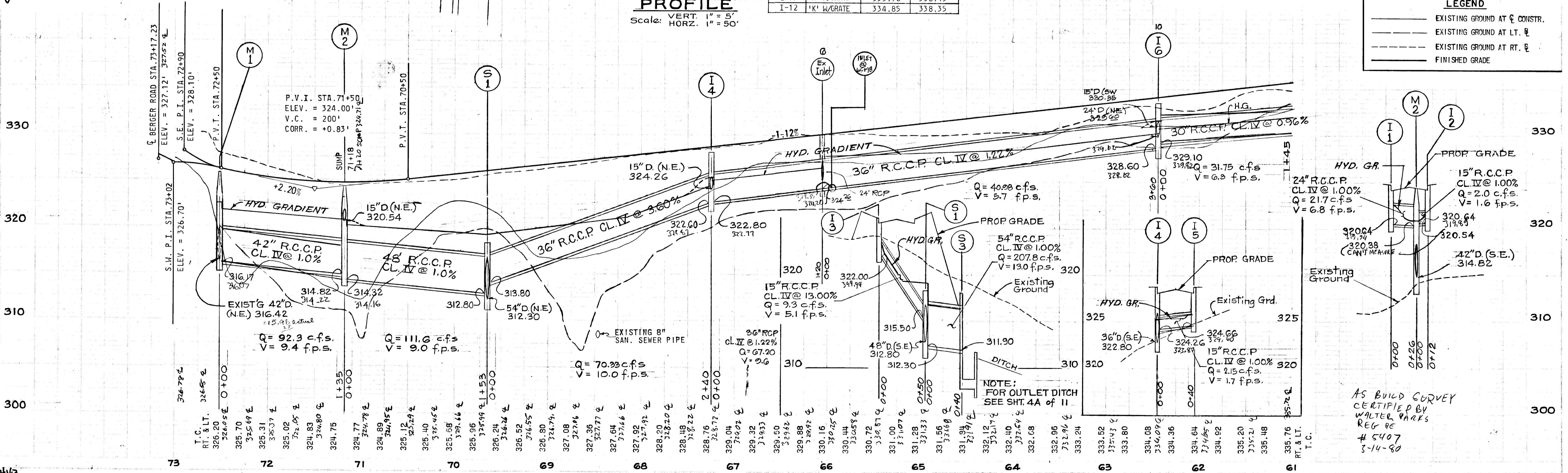
POT. 73+17.23
GERWIG LANE =
POT. 12+58.48
BERGER ROAD

CONCRETE MONUMENT
ELEV. 329.32

LANE

DEPARTMENT OF PUBLIC WORKS
Bronnie M. Weiland 9/29/70
CHIEF, BUREAU OF HIGHWAYS DATE

OFFICE OF PLANNING AND ZONING
J. H. Clawson 9-25-70
CHIEF ENGINEER, DIVISION OF LAND DEVELOPMENT DATE



PLAN
Scale: 1" = 50'

PROFILE
Scale: VERT. 1" = 5'
HORIZ. 1" = 50'

Hubert R. Platt
PROFESSIONAL ENGINEER

GREEN ASSOCIATES, INC.
CONSULTING ENGINEERS
BALTIMORE, MARYLAND

2/2/83 1 Rev. 5.D. Added Ex. Inlet G, One-Inlet Inlet II and Rev. to Gradients & Q's & V's
Rev. D. to Rev. No.

COLUMBIA
6TH ELECTION DISTRICT HOWARD COUNTY
HOWARD RESEARCH AND DEVELOPMENT CORP.
THE VILLAGE OF CROOK NEAR BOSTONVILLE, MARYLAND 21030

PROJECT AREA: E.G.U. SUBDIVISION - SECTION 2, AREA 3
AND LOTS 16 AND 17, A RESUBDIVISION OF LOTS 11 AND 12, SECTION 2, AREA 2"

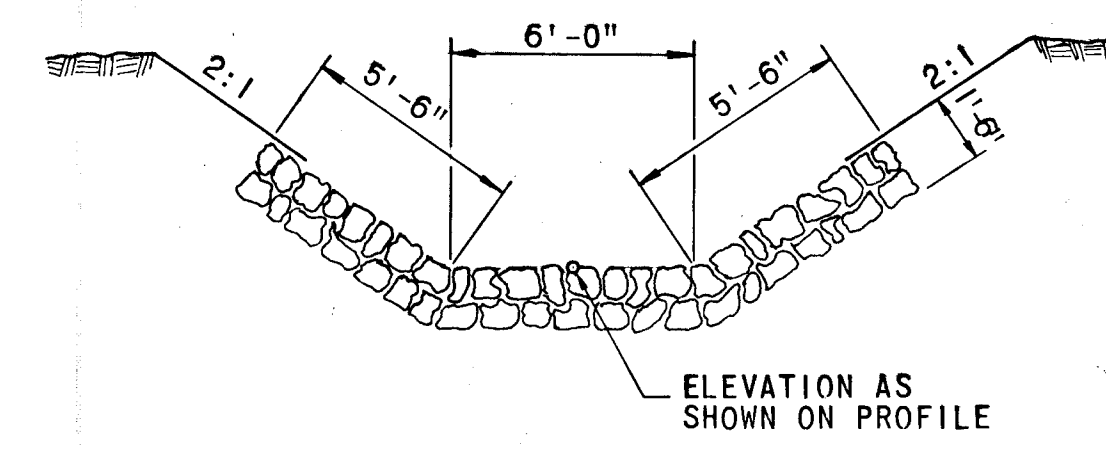
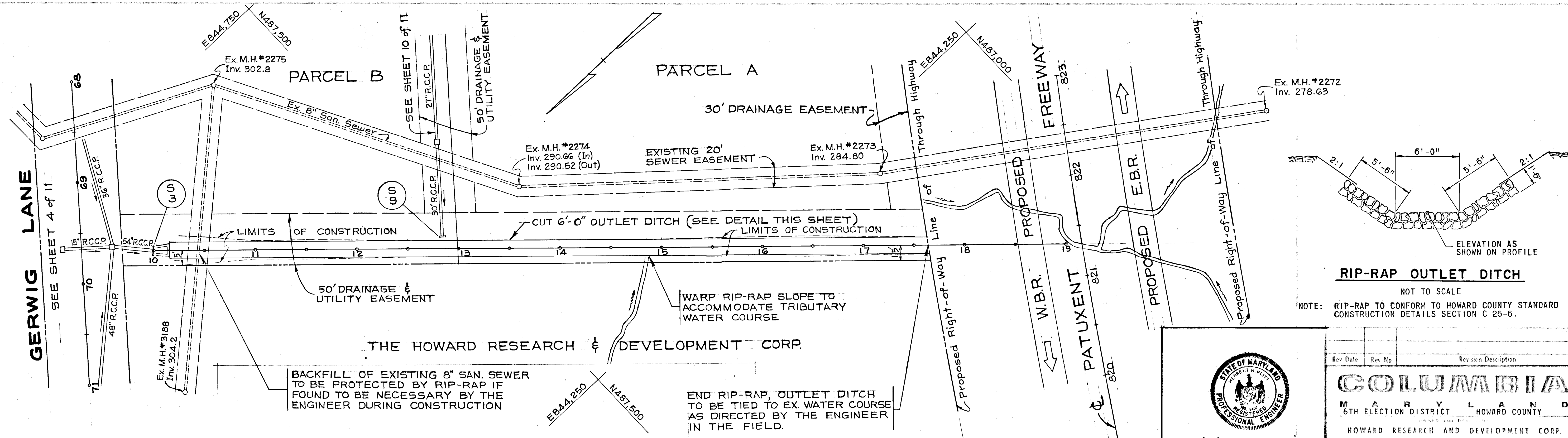
PROJECT TITLE: GERWIG LANE
PLAN & PROFILE

Drawn By: AS SHOWN Date: FEB. 20, 1970 Sheet No. 4 of 11
Checked By: Approved: C.C.T. No.

LEGEND

- EXISTING GROUND AT & CONSTR.
- - - EXISTING GROUND AT LT. &
- - - EXISTING GROUND AT RT. &
- FINISHED GRADE

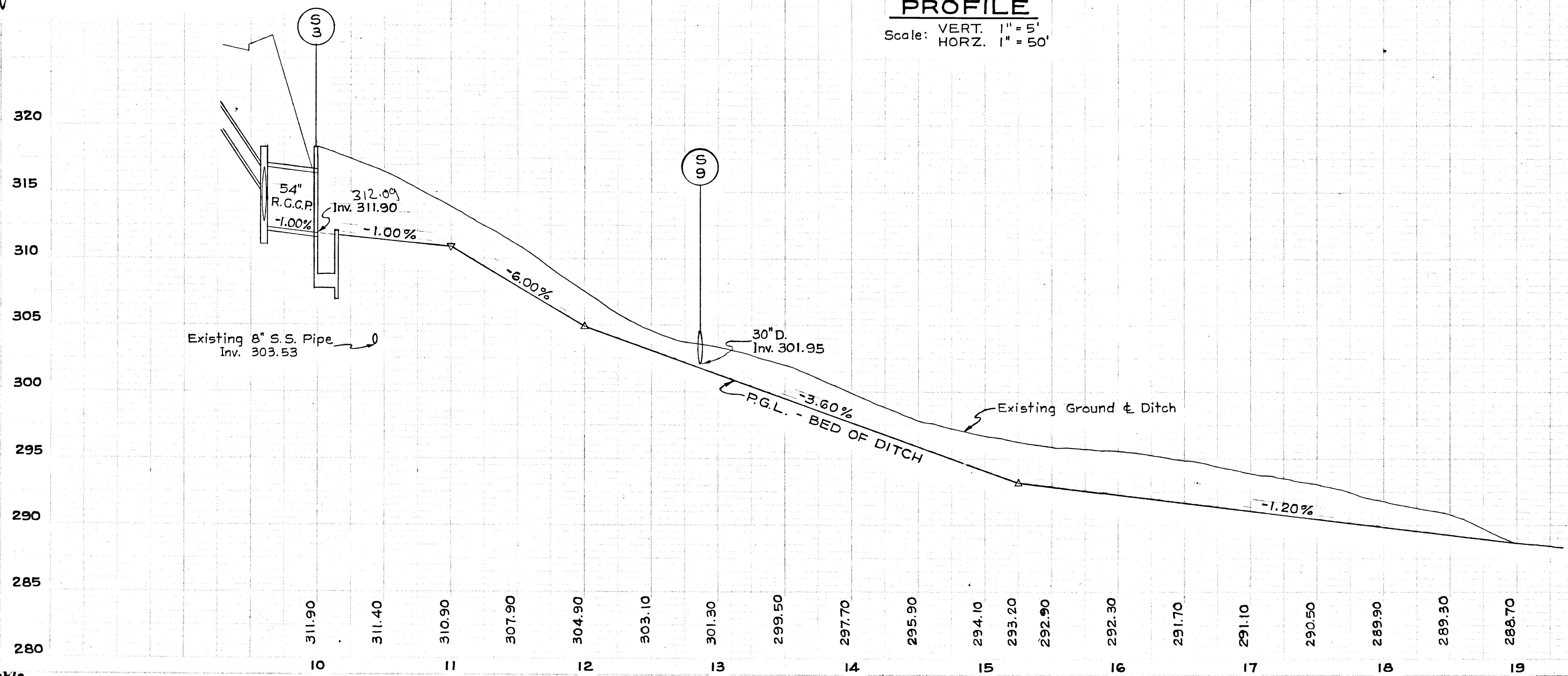
AS BUILT SURVEY
CERTIFIED BY
WALTER PARKS
REG. PE
5407
5-14-80



DEPARTMENT OF PUBLIC WORKS
 CHIEF, BUREAU OF HIGHWAYS
 OFFICE OF PLANNING AND ZONING
 CHIEF ENGINEER, DIVISION OF LAND DEVELOPMENT
 DATE: 9-25-70

PLAN
 Scale: 1" = 50'

PROFILE
 Scale: VERT. 1" = 5'
 Scale: HORZ. 1" = 50'



STATE OF MARYLAND
 PROFESSIONAL ENGINEER
 Robert R. Plett

GREEN ASSOCIATES, INC.
 CONSULTING ENGINEERS
 BALTIMORE, MARYLAND

Rev. Date	Rev. No.	Revision Description

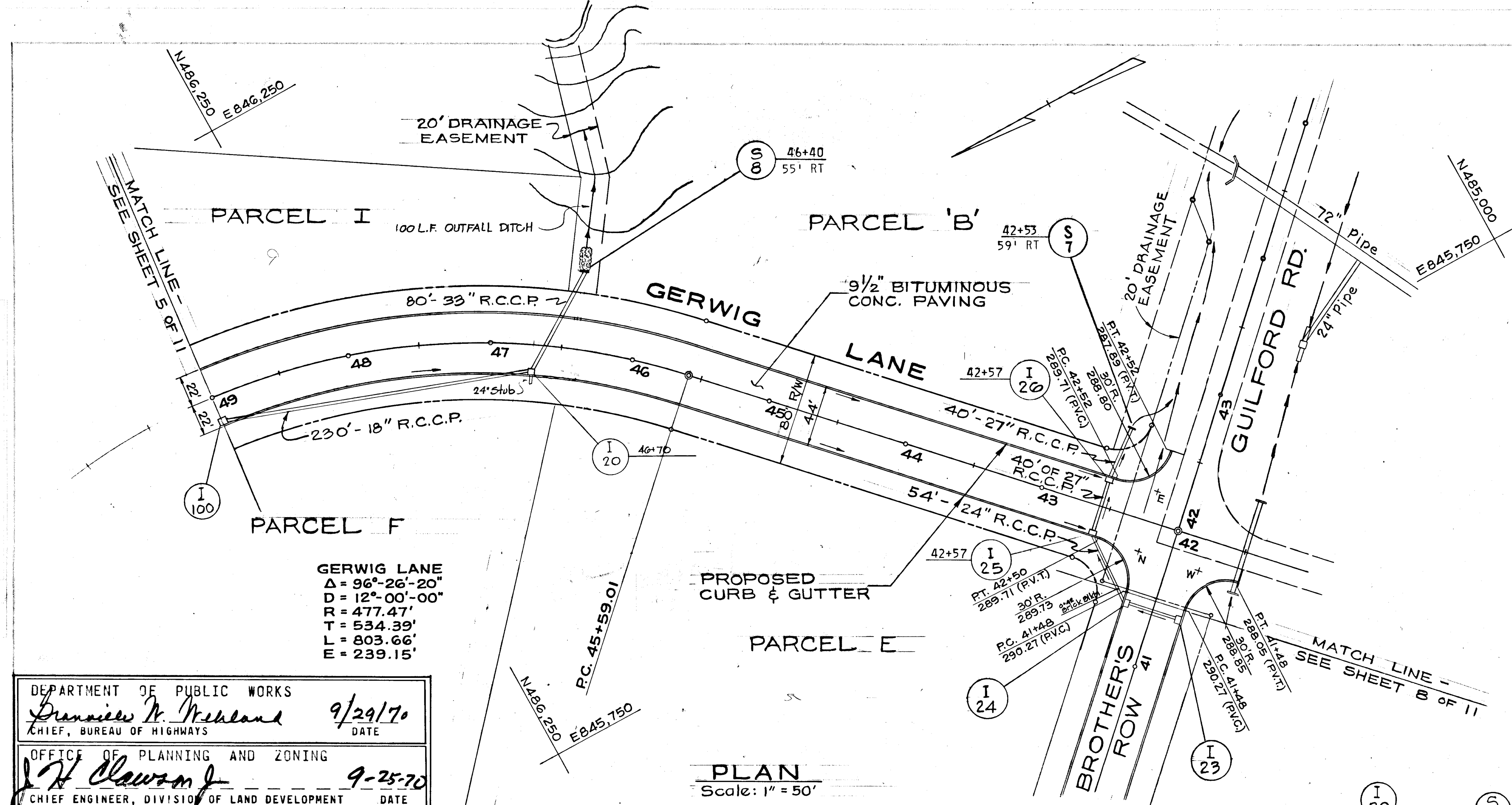
COLUMBIA
 MARYLAND
 6TH ELECTION DISTRICT HOWARD COUNTY
 HOWARD RESEARCH AND DEVELOPMENT CORP.
 PROJECT AREA E.G.U. SUBDIVISION - SECTION 2, AREA 3
 "AND LOTS 16 AND 17, A RESUBDIVISION
 OF LOTS 11 AND 12, SECTION 2, AREA 2"

PROJECT TITLE: DRAINAGE DETAIL

Des. By	Scale	AS SHOWN	Dwg No
			4A OF 11

Dim. By	Date	JUNE 1, 1970	C.C.F. No.

STRUCTURE SCHEDULE			
NO.	TYPE	INV. OUT	TOP ELEV.
I-100	DBL 'S' Comb.	322.00	320.50
I-20	DBL 'S' Comb.	309.00	315.50
I-25		284.45	289.82
I-26		283.75	289.82
S-B	Std End Supp Wall	308.20	310.07



DEPARTMENT OF PUBLIC WORKS
Branche H. Nealand 9/29/70
 CHIEF, BUREAU OF HIGHWAYS DATE

OFFICE OF PLANNING AND ZONING
J. H. Dawson 9-25-70
 CHIEF ENGINEER, DIVISION OF LAND DEVELOPMENT DATE

GREEN ASSOCIATES, INC.
 CONSULTING ENGINEERS
 BALTIMORE, MARYLAND

2/2/83 2 Rev Road Profile & 60 Gradients & Profiles also 25 & 26
 9/16/82 Revised Type of Inlet for I-25 & 26.

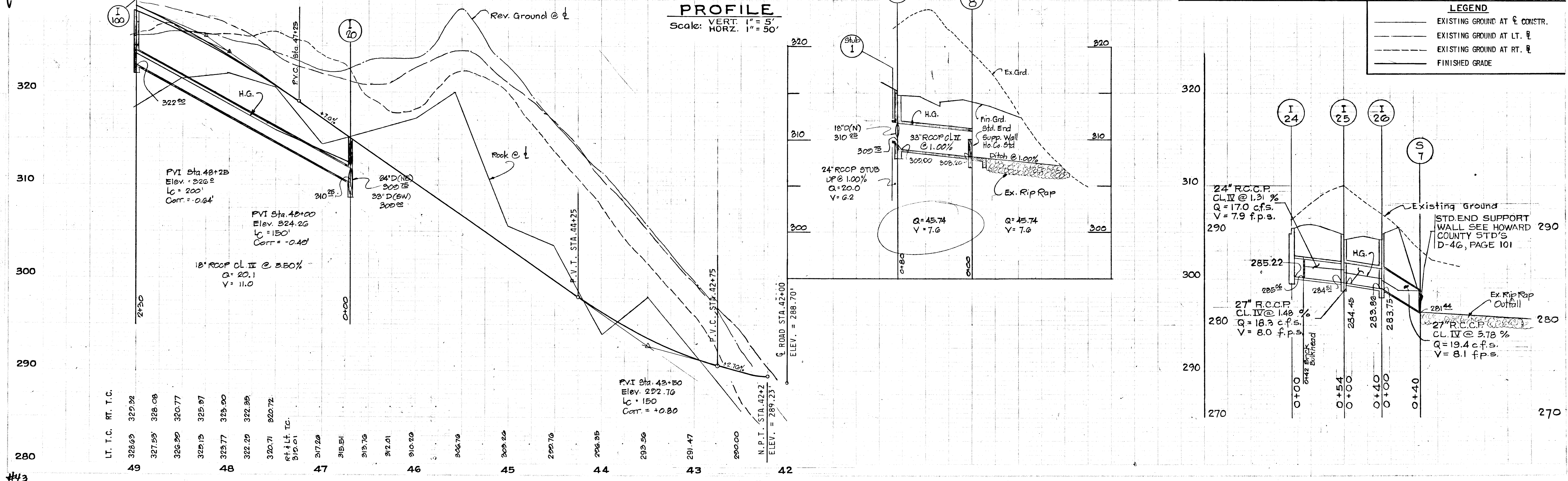
COLUMBIA
 MARYLAND
 6TH ELECTION DISTRICT HOWARD COUNTY

HOWARD RESEARCH AND DEVELOPMENT CORP
 THE VILLAGE OF CROSS KEYS - BALTIMORE, MARYLAND 21210

PROJECT AREA E.G.U. SUBDIVISION - SECTION 2, AREA 3
 "AND LOTS 16 AND 17, A RESUBDIVISION
 OF LOTS 11 AND 12, SECTION 2, AREA 2"

PROJECT TITLE GERWIG LANE
 PLAN & PROFILE

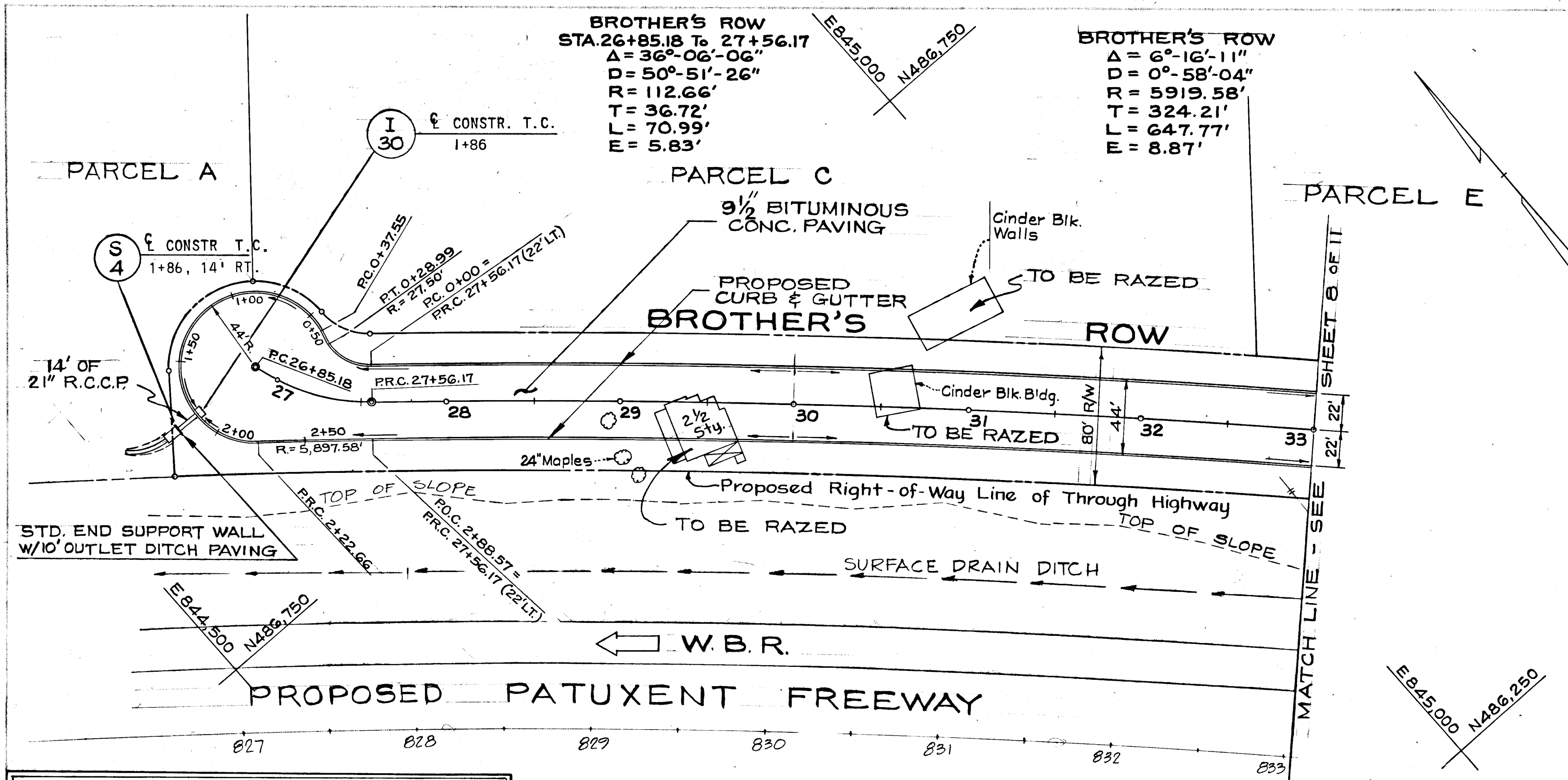
Des By AS SHOWN Des No 6 of 11
 Date FEB. 20, 1970
 Appr By



LEGEND

- EXISTING GROUND AT C CONSTR.
- EXISTING GROUND AT LT. R
- EXISTING GROUND AT RT. R
- FINISHED GRADE

STRUCTURE SCHEDULE			
NO.	TYPE	INV. OUT	TOP ELEV.
I-30	DBL.S COMB.	305.20	309.31



DEPARTMENT OF PUBLIC WORKS
Drumville M. Wickland 9/29/70
 CHIEF, BUREAU OF HIGHWAYS DATE

OFFICE OF PLANNING AND ZONING
J. H. Clawson 9-25-70
 CHIEF ENGINEER, DIVISION OF LAND DEVELOPMENT DATE

PLAN
 SCALE: 1" = 50'

Hubert R. Platt

Rev. Date: Rev. No: Revision Description:

COLUMBIA

MARYLAND
 6TH ELECTION DISTRICT HOWARD COUNTY

HOWARD RESEARCH AND DEVELOPMENT CORP.
 THE VILLAGE OF CROSS KEYS - BALTIMORE, MARYLAND 21210

PROJECT AREA: E.G.U. SUBDIVISION - SECTION 2, AREA 3
 AND LOTS 16 AND 17, A RESUBDIVISION
 OF LOTS 11 AND 12, SECTION 2, AREA 2"

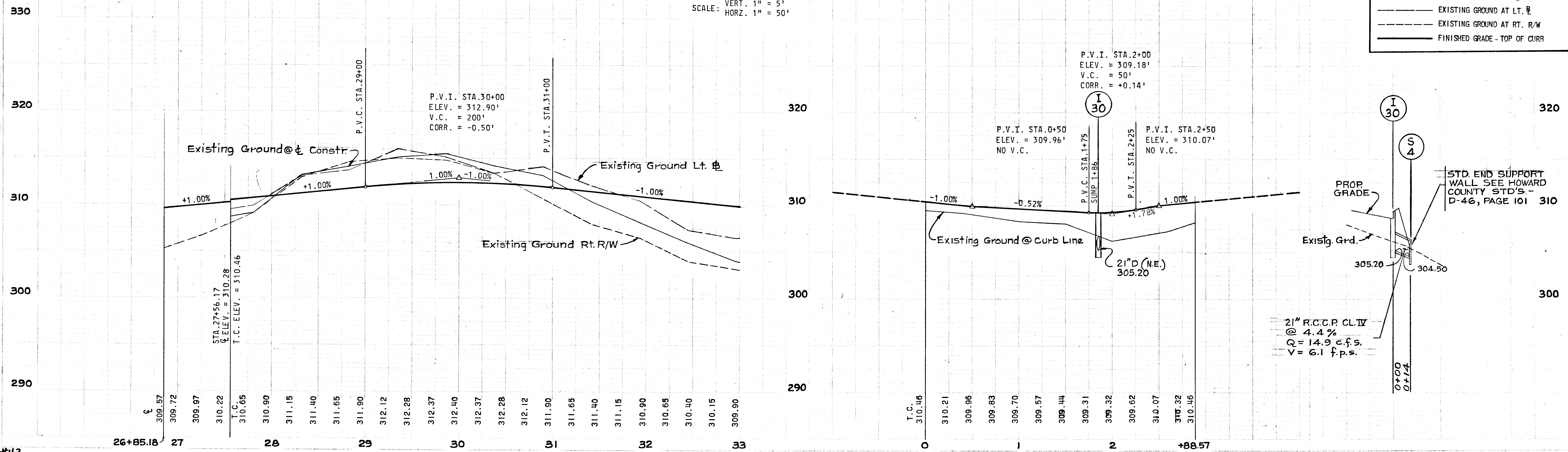
PROJECT TITLE: **BROTHER'S ROW
 PLAN & PROFILE**

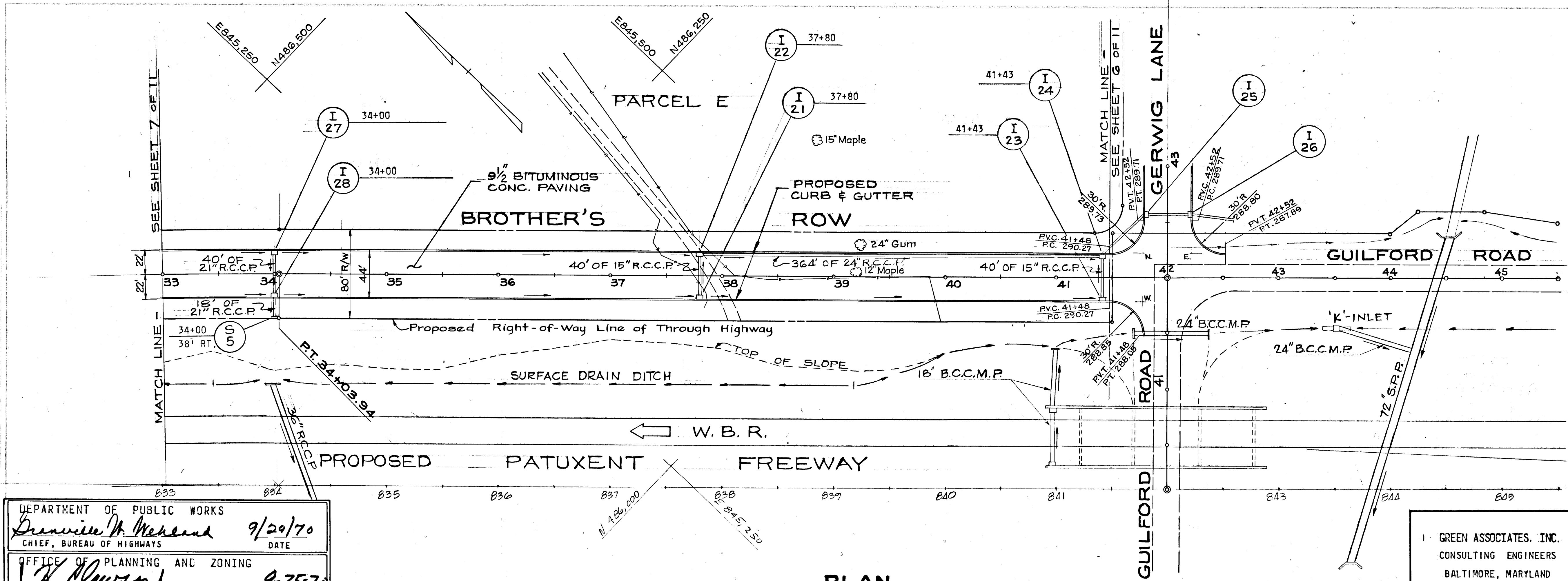
Des. By: Date: AS SHOWN Day No: 7 of 11
 Drawn By: Date: FEB. 20, 1970 C.C.T. No:
 C.A. By: Approved:

GREEN ASSOCIATES, INC.
 CONSULTING ENGINEERS
 BALTIMORE, MARYLAND

PROFILE

SCALE: VERT. 1" = 5'
 HORZ. 1" = 50'





STRUCTURE SCHEDULE			
NO.	TYPE	INV. OUT	TOP ELEV.
I-21	DBL. 'S' COMB.	299.92	304.02
I-22	DBL. 'S' COMB.	299.02	304.02
I-23	DBL. 'S' COMB.	286.60	290.41
I-24	DBL. 'S' COMB.	285.22	290.41
I-27	DBL. 'S' COMB.	304.80	308.90
I-28	DBL. 'S' COMB.	304.17	308.90

DEPARTMENT OF PUBLIC WORKS
Brennie M. Weiland 9/29/70
 CHIEF, BUREAU OF HIGHWAYS DATE

OFFICE OF PLANNING AND ZONING
J. H. Dawson 9-25-70
 CHIEF ENGINEER, DIVISION OF LAND DEVELOPMENT DATE

PLAN
 SCALE: 1" = 50'

STATE OF MARYLAND
 PROFESSIONAL ENGINEER
Robert C. Pitt

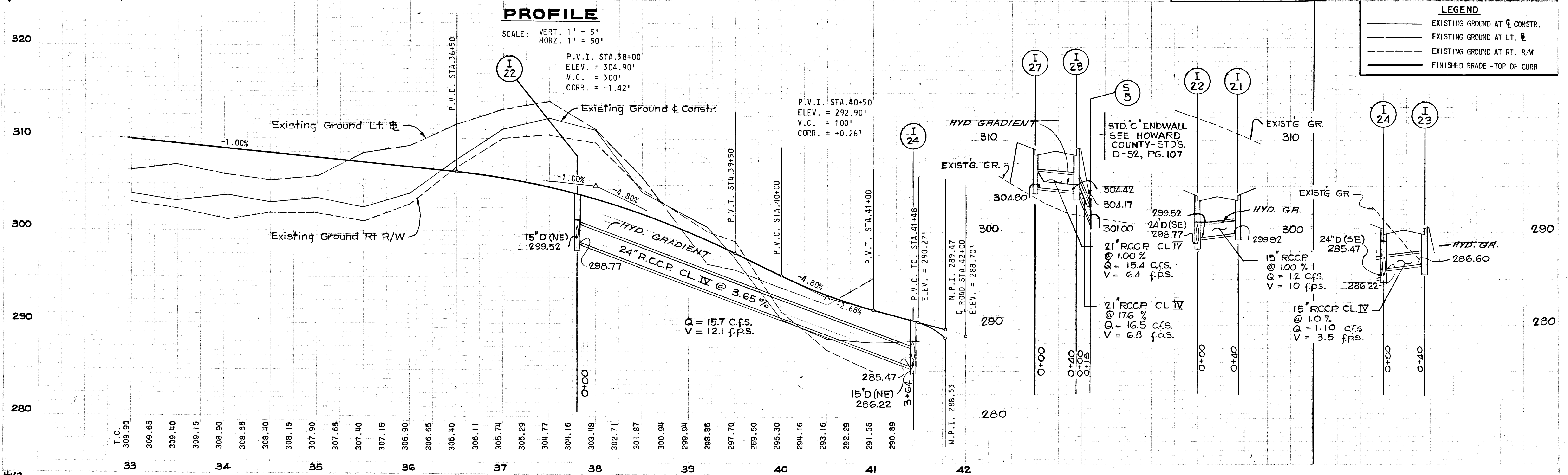
Rev. Date Rev No Revision Description

COLUMBIA
 MARYLAND
 6TH ELECTION DISTRICT HOWARD COUNTY
 HOWARD RESEARCH AND DEVELOPMENT CORP
 THE VILLAGE OF CRISP KEEN - BALTIMORE, MARYLAND 21210
 PROJECT AREA E.G.U. SUBDIVISION - SECTION 2 AREA 3
 "AND LOTS 16 AND 17, A RESUBDIVISION
 OF LOTS 11 AND 12, SECTION 2, AREA 2"

PROJECT TITLE: **BROTHER'S ROW
 PLAN & PROFILE**

Des By: Scale: AS SHOWN Draw No: 8 of 11
 Dwn By: Date: FEB. 20, 1970 C.C.F. No.
 Chk By: Approved

GREEN ASSOCIATES, INC.
 CONSULTING ENGINEERS
 BALTIMORE, MARYLAND

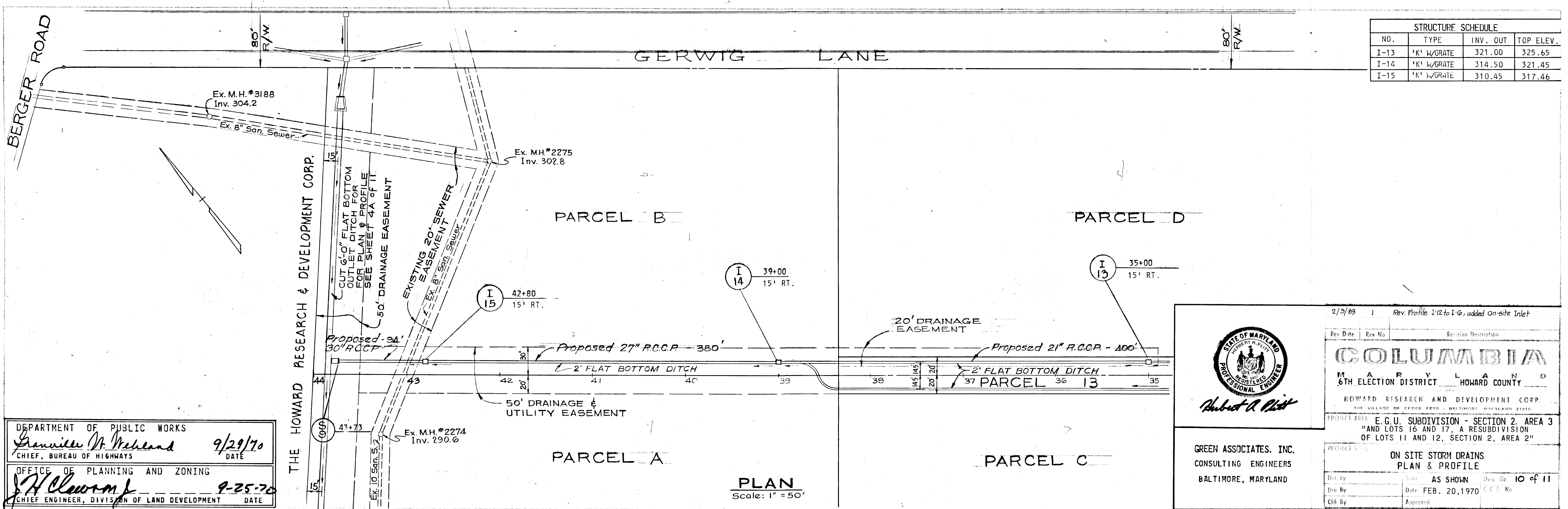


LEGEND

- EXISTING GROUND AT C. CONSTR.
- - - EXISTING GROUND AT LT. R/W
- - - EXISTING GROUND AT RT. R/W
- FINISHED GRADE - TOP OF CURB

#43

F-70-85 Col



STRUCTURE SCHEDULE			
NO.	TYPE	INV. OUT	TOP ELEV.
I-13	'K' W/GRATE	321.00	325.65
I-14	'K' W/GRATE	314.50	321.45
I-15	'K' W/GRATE	310.45	317.46

DEPARTMENT OF PUBLIC WORKS
Granville W. Weiland 9/29/70
 CHIEF, BUREAU OF HIGHWAYS DATE

OFFICE OF PLANNING AND ZONING
J. H. Clowry 9-25-70
 CHIEF ENGINEER, DIVISION OF LAND DEVELOPMENT DATE

2/3/83 1 Rev. Profile I-12 to I-6, added on-site Inlet

STATE OF MARYLAND
 REGISTERED PROFESSIONAL ENGINEER
Hubert A. Pitt

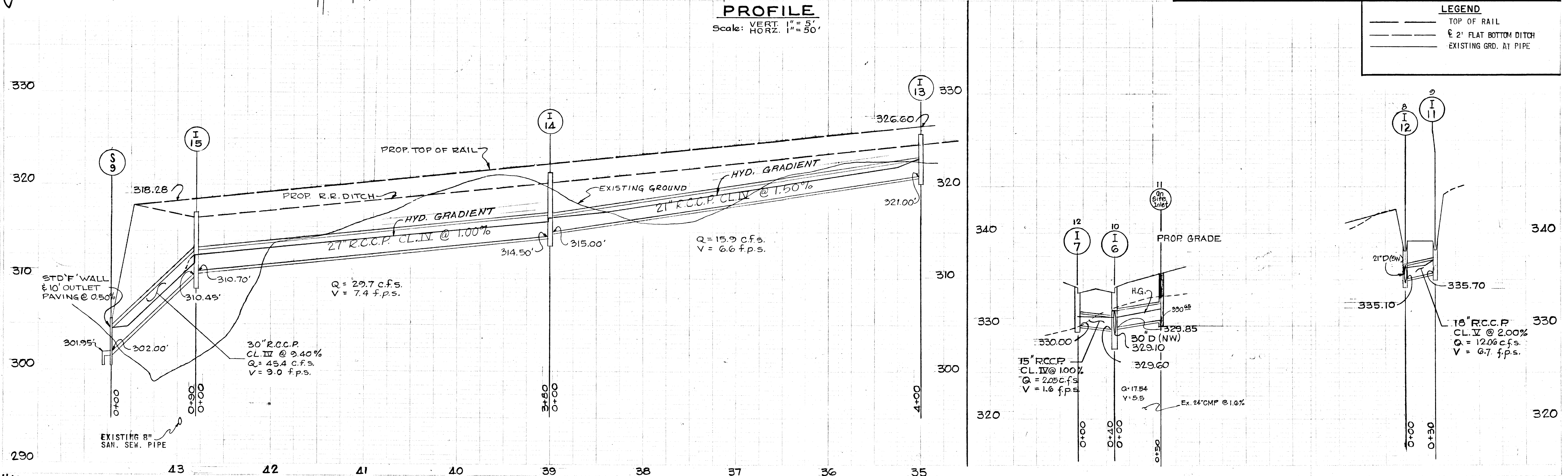
COLUMBIA
 MARYLAND
 6TH ELECTION DISTRICT HOWARD COUNTY

HOWARD RESEARCH AND DEVELOPMENT CORP.
 THE VILLAGE OF CROSS KEYS - BALTIMORE, MARYLAND 21210

PROJECT AREA: E. G. U. SUBDIVISION - SECTION 2, AREA 3
 AND LOTS 16 AND 17, A RESUBDIVISION
 OF LOTS 11 AND 12, SECTION 2, AREA 2"

PROJECT TITLE: ON SITE STORM DRAINS
 PLAN & PROFILE

Drawn By: AS SHOWN Date: FEB. 20, 1970 Sheet No. 10 of 11
 Checked By: Approved: C.C.C. No.

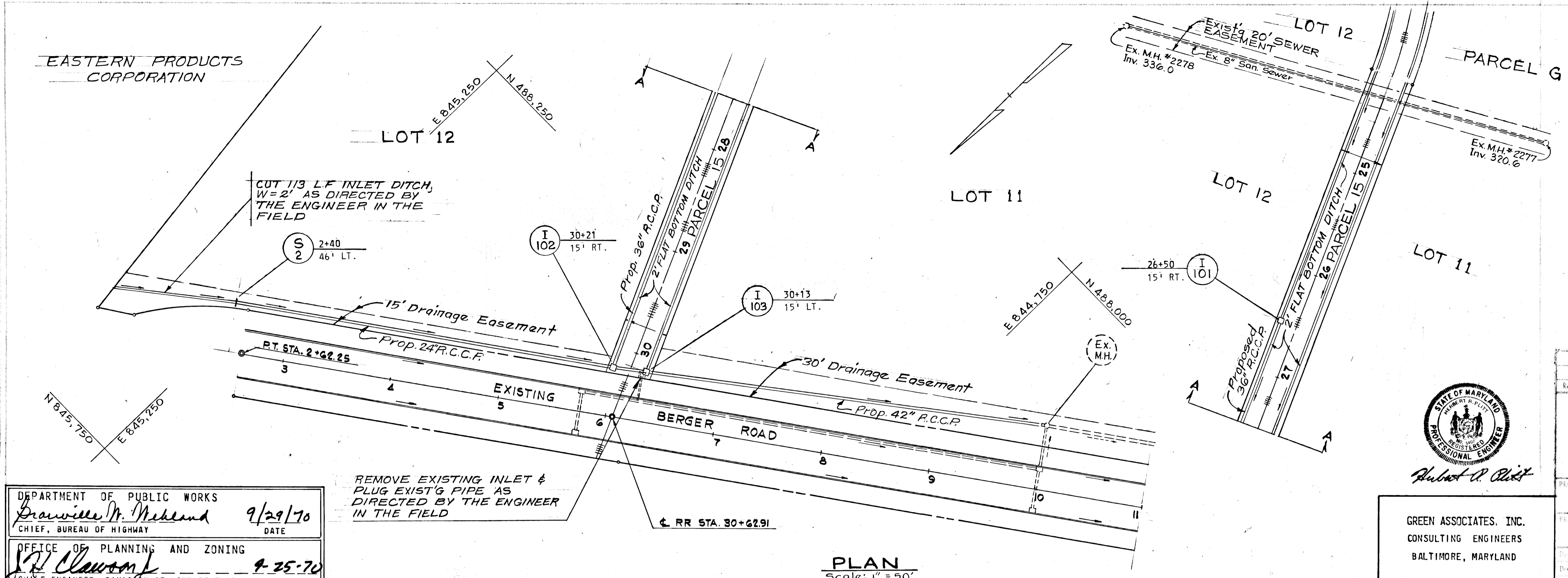


LEGEND

- TOP OF RAIL
- - - PROP. R.R. DITCH
- 2' FLAT BOTTOM DITCH
- - - EXISTING GRD. AT PIPE

EASTERN PRODUCTS CORPORATION

STRUCTURE SCHEDULE			
NO.	TYPE	INV. OUT	TO ELEV.
I-101	'K' W/GRATE	330.15	333.85
I-102	'K' W/GRATE	325.95	333.85
I-103	'K' W/GRATE	325.40	333.85



REMOVE EXISTING INLET & PLUG EXIST'G PIPE AS DIRECTED BY THE ENGINEER IN THE FIELD

PLAN
Scale: 1" = 50'

PROFILE
Scale: VERT. 1" = 5'
HORIZ. 1" = 50'

DEPARTMENT OF PUBLIC WORKS
Dawid M. Mehlend 9/29/70
CHIEF, BUREAU OF HIGHWAY DATE

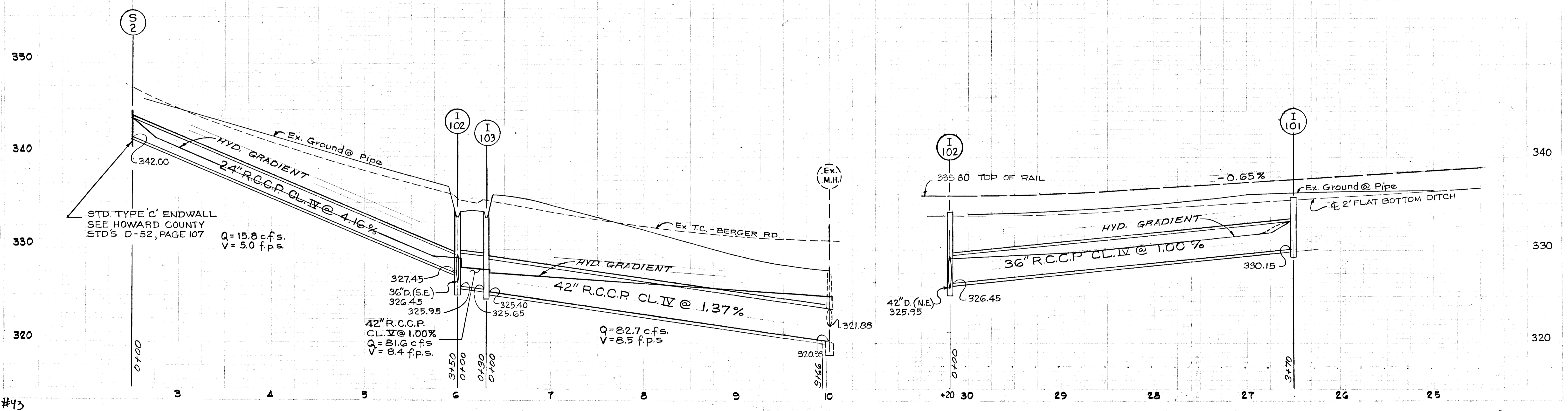
OFFICE OF PLANNING AND ZONING
J. H. Clawson 9-25-70
CHIEF ENGINEER, DIVISION OF LAND DEVELOPMENT DATE

STATE OF MARYLAND
PROFESSIONAL ENGINEER
Hubert R. Clift

GREEN ASSOCIATES, INC.
CONSULTING ENGINEERS
BALTIMORE, MARYLAND

Rev. Date	Rev. No.	Revision Description
COLUMBIA		
6TH ELECTION DISTRICT HOWARD COUNTY		
HOWARD RESEARCH AND DEVELOPMENT CO. INC.		
THE VILLAGE OF CROSS KEYS - BALTIMORE, MARYLAND 21210		
PROJECT AREA: E.G.U. SUBDIVISION - SECTION 2, AREA 3 AND LOTS 16 AND 17, A RESUBDIVISION OF LOTS 11 AND 12, SECTION 2, AREA 2"		
PROJECT TITLE: ON SITE STORM DRAINS PLAN & PROFILE		
Drawn By	Date	Scale
Checked By	Date	Scale
Approved	Date	Scale

LEGEND	
---	TOP OF RAIL
---	2' FLAT BOTTOM DITCH
---	EXISTING GRD. AT PIPE
---	EX. T.C. BERGER ROAD



#43

F-70-85 Col