

REVISIONS

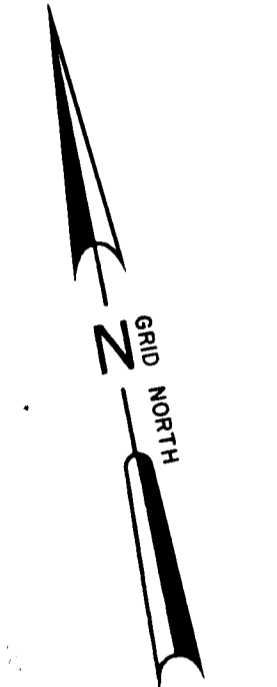
SHEET INDEX	
SHEET NO.	DESCRIPTION
1	TITLE SHEET
2	BEAVERKILL ROAD
3	OLD TUCKER ROW
4	DRAINAGE EASEMENT
5	DRAINAGE AREA MAP
6	DETAILS

COLUMBIA

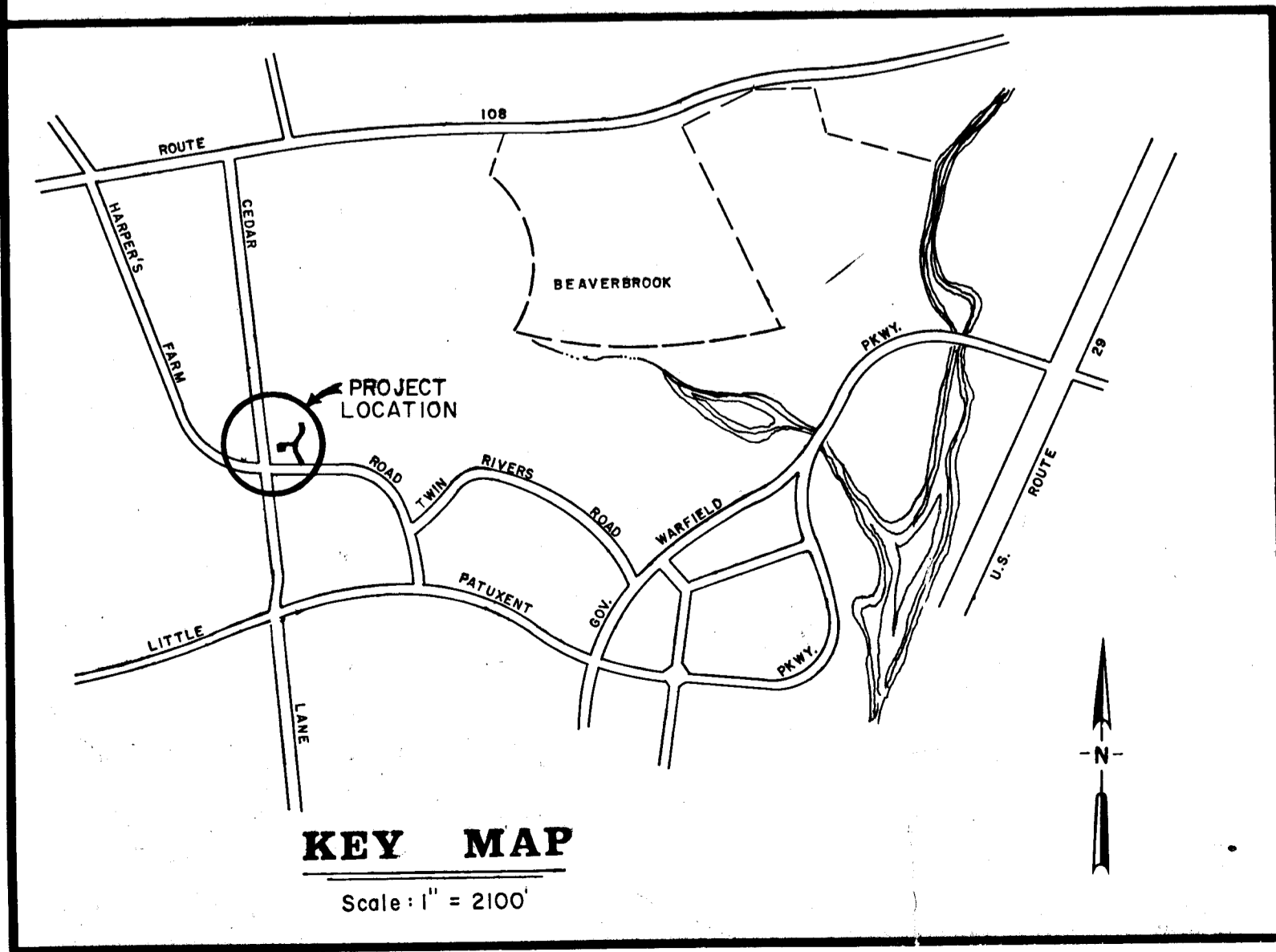
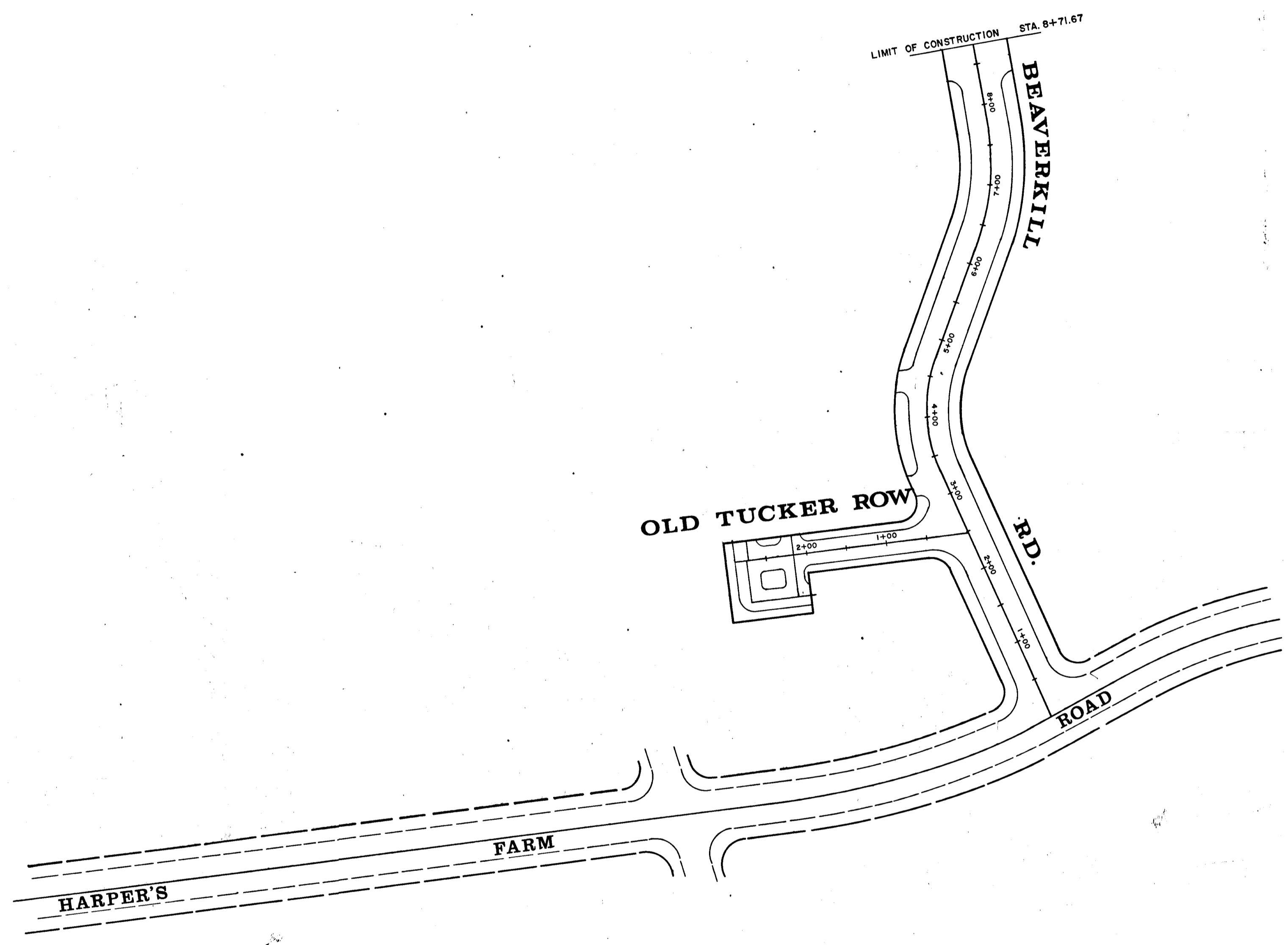
HOWARD COUNTY, MARYLAND
5th ELECTION DISTRICT

VILLAGE OF HARPER'S CHOICE SEC. 5 VILLAGE CENTER AREA 2

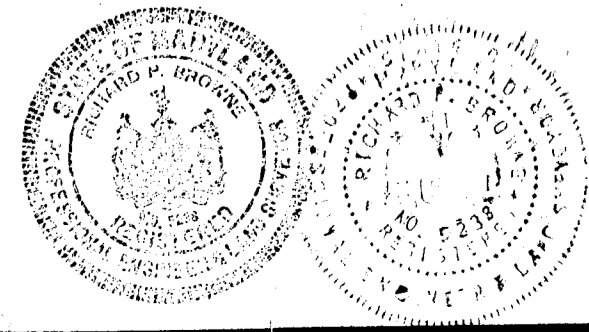
- NOTES:
- ALL CONSTRUCTION TO BE IN ACCORDANCE WITH HOWARD COUNTY ROAD CONSTRUCTION CODE AND STANDARD SPECIFICATIONS AS REVISED AUGUST 1968.
 - CONTRACTOR TO NOTIFY ALL UTILITY COMPANIES 48 HOURS PRIOR TO STARTING CONSTRUCTION.



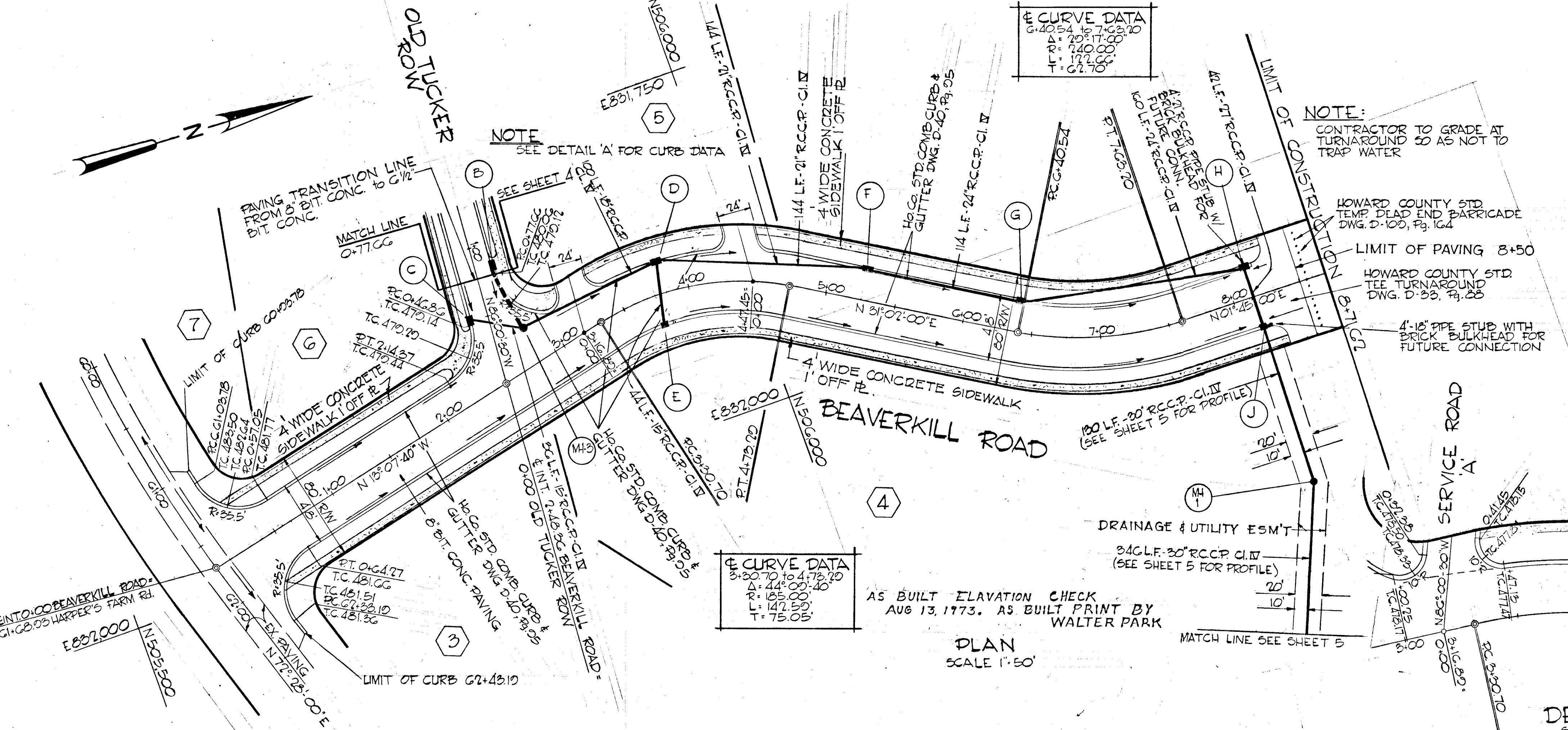
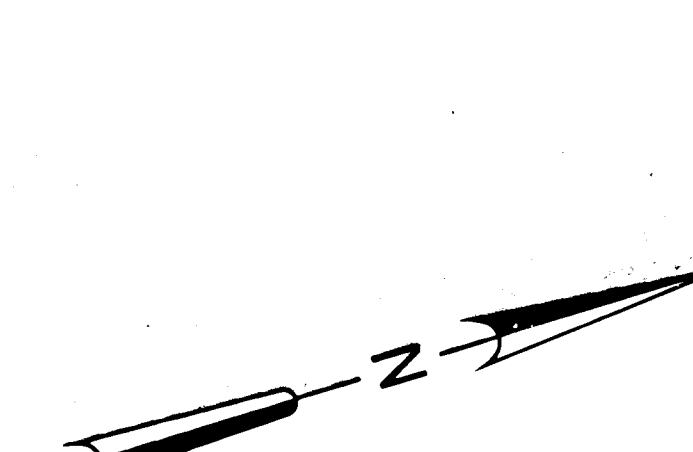
SCALE: 1" = 100'



OWNER & DEVELOPER
THE HOWARD RESEARCH AND DEVELOPMENT CORP.
THE VILLAGE OF CROSS KEYS
BALTIMORE, MARYLAND



CONSULTING ENGINEERS & PLANNERS INCORPORATED BALTIMORE, MARYLAND		DEPARTMENT OF PUBLIC WORKS	
<i>Richard P. Browne</i> Richard P. Browne 5238		<i>Arnold H. Haddock</i> 3-2-70 CHIEF, BUREAU OF HIGHWAYS DATE	
		OFFICE OF PLANNING AND ZONING	
		<i>J. H. Clowry</i> 2-27-70 CHIEF ENGINEER, DIVISION OF LAND DEVELOPMENT DATE	



CURVE DATA

Station	Radius	Angle
10+00	3000'	90°
14+75	4000'	90°
18+50	2500'	90°

NOTE:
CONTRACTOR TO GRADE AT TURNAROUND SO AS NOT TO TRAP WATER

STORM DRAINAGE STRUCTURE SCHEDULE

NO.	TYPE	LOCATION	INV. IN	INV. OUT	I.C.P. ELEV.	REMARKS
C	COMB 'S' INLET DOUBLE GRATE	0+50.26 LT. E	474.03			Ho.Co. STD. DWG. D-00 Pg. 154
M-3	STD. MANHOLE	2+80 24' LT. E	473.91	473.06	477.96	Ho.Co. STD. DWG. D-103 Pg. 158
D	COMB 'S' INLET DOUBLE GRATE	3+83 LT. E	471.76	476.93		Ho.Co. STD. DWG. D-00 Pg. 154
F	COMB 'S' INLET SINGLE GRATE	3+75 RT. E	472.13	477.06		SEE DETAIL SHEET
F	COMB 'S' INLET DOUBLE GRATE	5+75 LT. E	467.75	467.50	473.93	Ho.Co. STD. DWG. D-00 Pg. 154
G	COMB 'S' INLET SINGLE GRATE	6+37 LT. E	464.40	464.10	470.00	SEE DETAIL SHEET
H	COMB 'S' INLET DOUBLE GRATE	8+15.15 LT. E	459.50	459.25	463.42	Ho.Co. STD. DWG. D-00 Pg. 154
J	COMB 'S' INLET SINGLE GRATE	8+15.15 RT. E	459.50	457.50	463.42	SEE DETAIL SHEET
M-1	STD. MANHOLE	8+15.15 - 150.85 RT. E	450.00	440.15		Ho.Co. STD. DWG. D-103 Pg. 158



Richard P. Browne Associates
CONSULTING ENGINEERS - PLANNERS
COLUMBIA, MARYLAND
29 JAN 73 | ADD CONC. SIDEWALK BOTH SIDES BEAVERKILL RD
2-26-70 | REMOVE SERVICE ROAD 'B'
Rev. Date | Rev. No. | Revision Description

COLUMBIA
5th ELECTION DISTRICT
HOWARD COUNTY, MARYLAND
HOWARD RESEARCH AND DEVELOPMENT CORP.
THE VILLAGE OF CROSS KEYS - BALTIMORE, MARYLAND 21210
VILLAGE OF HARPER'S CHOICE
SECTION 5 VILLAGE CENTER AREA 2
PLAN & PROFILE
BEAVERKILL ROAD

Des. By: T.S. | Scale: AS NOTED | Div. No: 2 of 6
Dir. By: F.T. | Date: DEC. 12, 1966 | C.C.F. No.
Chk. By: P.A.P. | Agreement

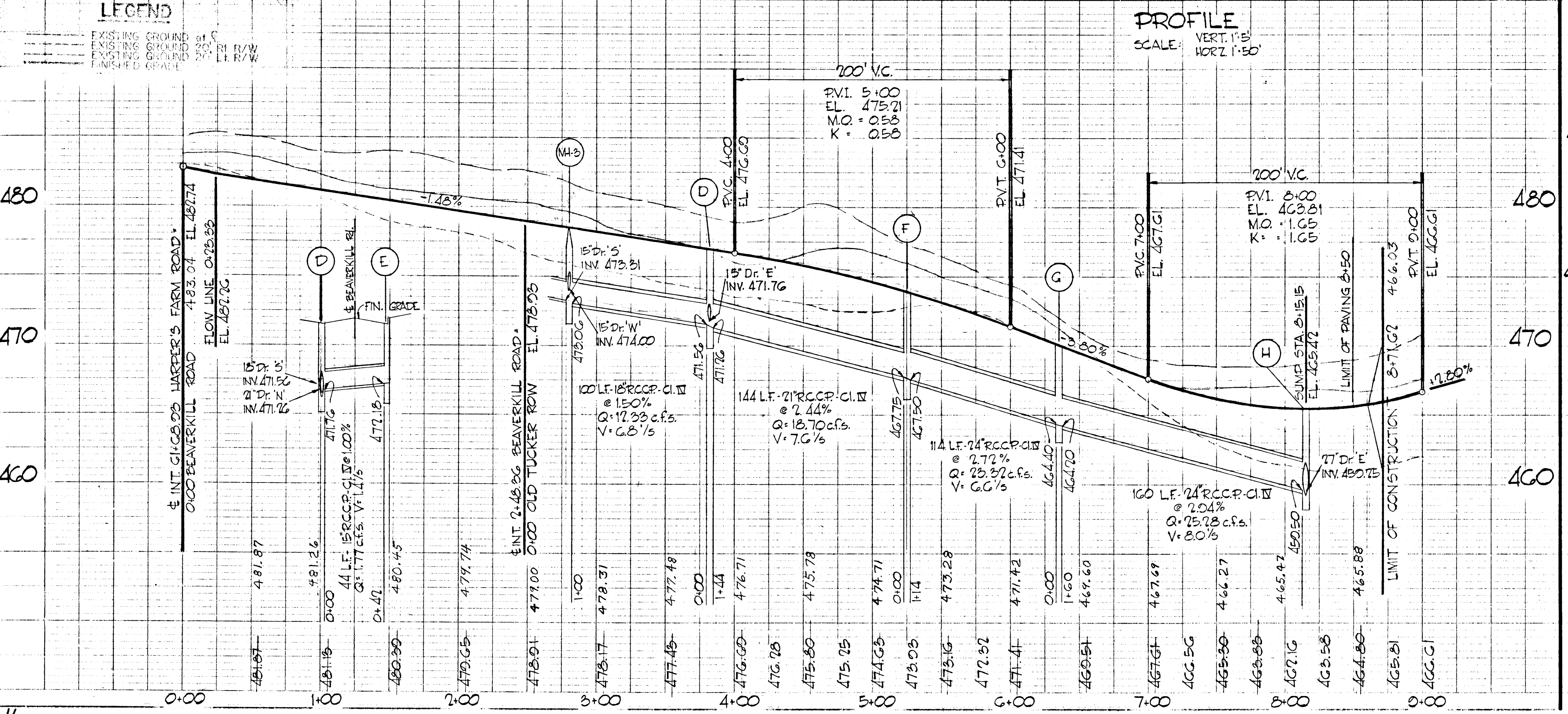
AS BUILT ELEVATION CHECK
AUG 13, 1973. AS BUILT PRINT BY WALTER PARK

PLAN
SCALE 1" = 50'

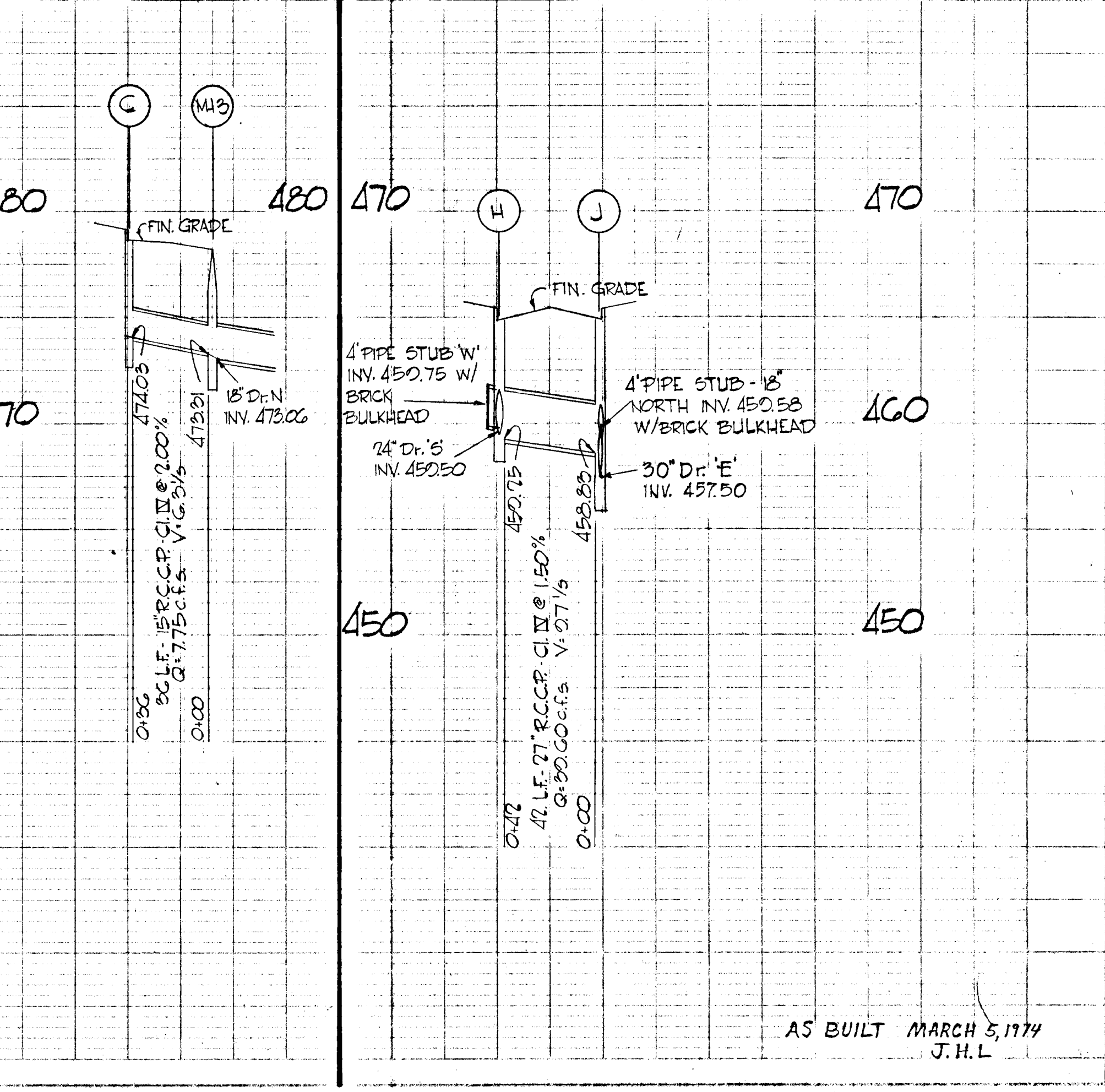
DETAIL 'A'
SCALE: 1" = 30'

LEGEND

[Symbol]	EXISTING GROUND
[Symbol]	EXISTING GROUND AT 2' R/W
[Symbol]	EXISTING GROUND AT 10' R/W
[Symbol]	EXISTING GROUND AT 20' R/W
[Symbol]	EXISTING GROUND AT 30' R/W
[Symbol]	EXISTING GROUND AT 40' R/W
[Symbol]	EXISTING GROUND AT 50' R/W
[Symbol]	EXISTING GROUND AT 60' R/W
[Symbol]	EXISTING GROUND AT 70' R/W
[Symbol]	EXISTING GROUND AT 80' R/W
[Symbol]	EXISTING GROUND AT 90' R/W
[Symbol]	EXISTING GROUND AT 100' R/W
[Symbol]	EXISTING GROUND AT 110' R/W
[Symbol]	EXISTING GROUND AT 120' R/W
[Symbol]	EXISTING GROUND AT 130' R/W
[Symbol]	EXISTING GROUND AT 140' R/W
[Symbol]	EXISTING GROUND AT 150' R/W
[Symbol]	EXISTING GROUND AT 160' R/W
[Symbol]	EXISTING GROUND AT 170' R/W
[Symbol]	EXISTING GROUND AT 180' R/W
[Symbol]	EXISTING GROUND AT 190' R/W
[Symbol]	EXISTING GROUND AT 200' R/W
[Symbol]	EXISTING GROUND AT 210' R/W
[Symbol]	EXISTING GROUND AT 220' R/W
[Symbol]	EXISTING GROUND AT 230' R/W
[Symbol]	EXISTING GROUND AT 240' R/W
[Symbol]	EXISTING GROUND AT 250' R/W
[Symbol]	EXISTING GROUND AT 260' R/W
[Symbol]	EXISTING GROUND AT 270' R/W
[Symbol]	EXISTING GROUND AT 280' R/W
[Symbol]	EXISTING GROUND AT 290' R/W
[Symbol]	EXISTING GROUND AT 300' R/W
[Symbol]	EXISTING GROUND AT 310' R/W
[Symbol]	EXISTING GROUND AT 320' R/W
[Symbol]	EXISTING GROUND AT 330' R/W
[Symbol]	EXISTING GROUND AT 340' R/W
[Symbol]	EXISTING GROUND AT 350' R/W
[Symbol]	EXISTING GROUND AT 360' R/W
[Symbol]	EXISTING GROUND AT 370' R/W
[Symbol]	EXISTING GROUND AT 380' R/W
[Symbol]	EXISTING GROUND AT 390' R/W
[Symbol]	EXISTING GROUND AT 400' R/W
[Symbol]	EXISTING GROUND AT 410' R/W
[Symbol]	EXISTING GROUND AT 420' R/W
[Symbol]	EXISTING GROUND AT 430' R/W
[Symbol]	EXISTING GROUND AT 440' R/W
[Symbol]	EXISTING GROUND AT 450' R/W
[Symbol]	EXISTING GROUND AT 460' R/W
[Symbol]	EXISTING GROUND AT 470' R/W
[Symbol]	EXISTING GROUND AT 480' R/W
[Symbol]	EXISTING GROUND AT 490' R/W
[Symbol]	EXISTING GROUND AT 500' R/W



PROFILE
SCALE: VERT. 1" = 5'
HORIZ. 1" = 50'



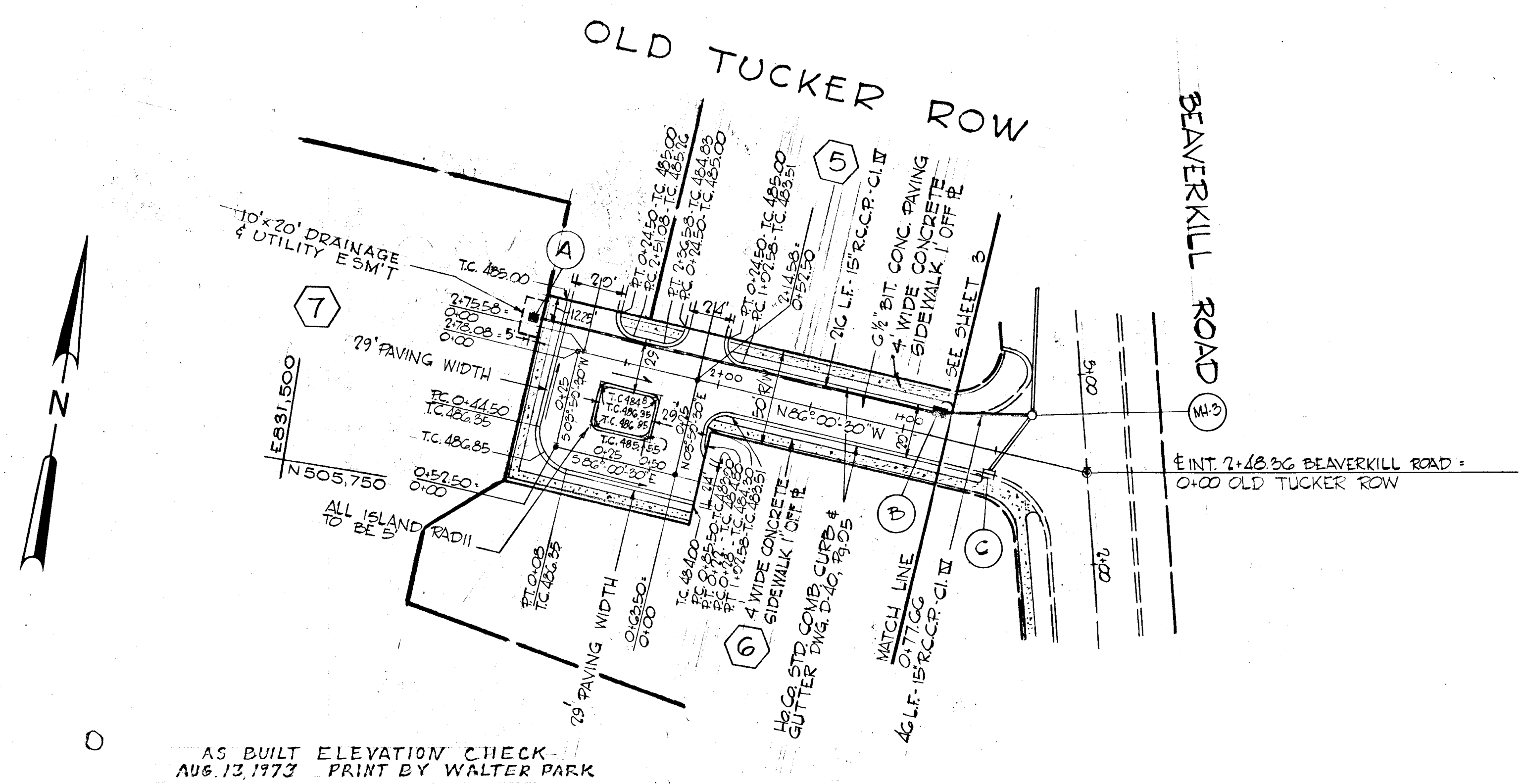
AS BUILT MARCH 5, 1974
J.H.L.

PLAN
 CHECKED BY: []
 DATE: []
 NO. []

PROFILE
 CHECKED BY: []
 DATE: []
 NO. []

STORM DRAINAGE STRUCTURE SCHEDULE

NO.	TYPE	LOCATION	INV. IN	INV. OUT	F.C.P. ELEV.	REMARKS
A	STD CLASS 'S' INLET	SEE PLAN		487.00	TOP GRATE EL. 486.80	HO-CO STD. DWG. D-28
B	COMB 'S' INLET SINGLE GRATE	0+85 RT. E	475.58	475.38	480.70	SEE DETAIL SHEET



AS BUILT ELEVATION CHECK - AUG. 13, 1973 PRINT BY WALTER PARK

PLAN SCALE 1"=50'

Richard P. Browne
 RICHARD P. BROWNE ASSOCIATES
 CONSULTING ENGINEERS - PLANNERS
 COLUMBIA, MARYLAND

29 JAN 70 | ADD SIDEWALKS OLD TUCKER ROW
 29' WIDTH (PAVING) IN TURN-AROUND

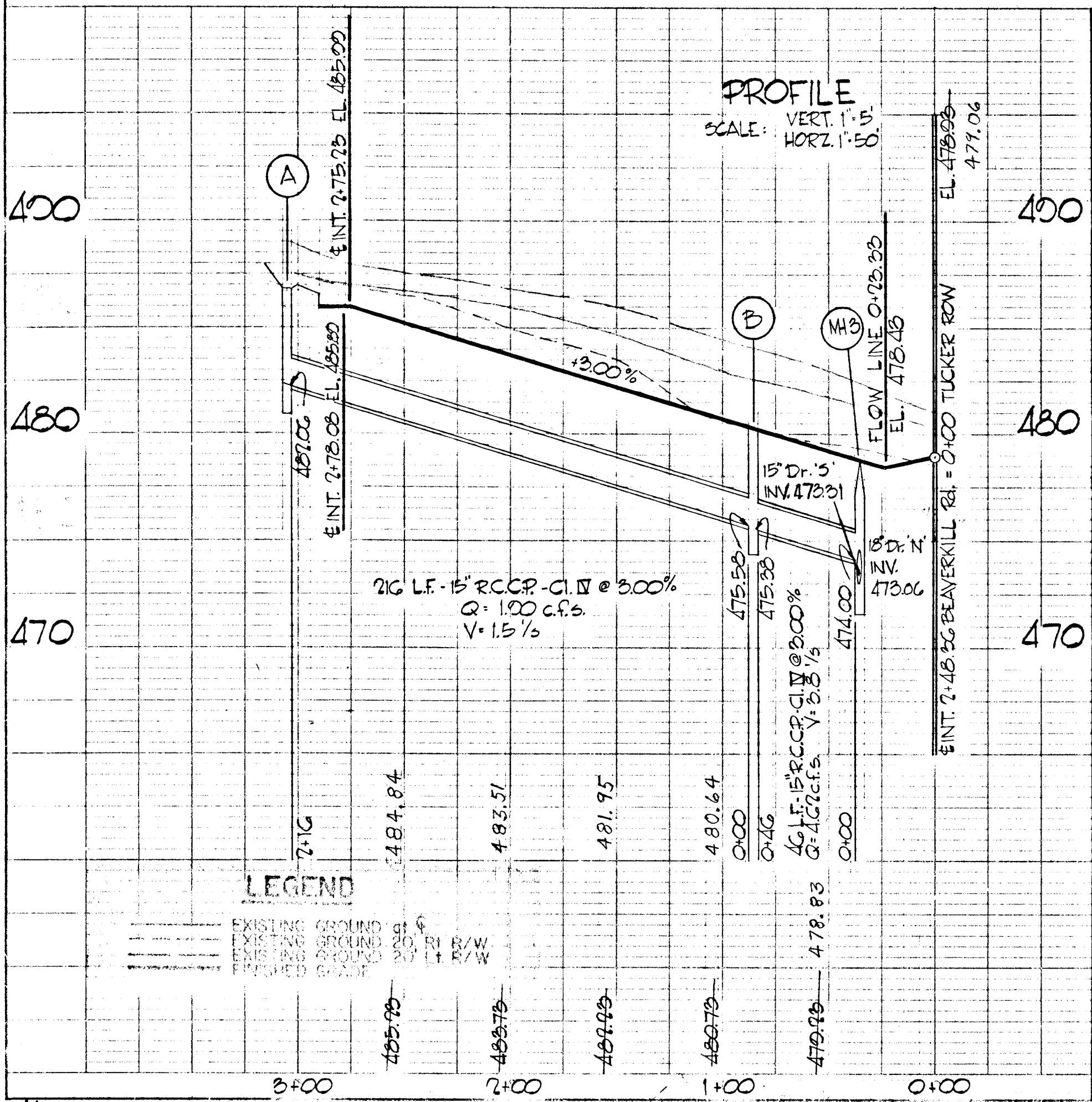
COLUMBIA
 5th ELECTION DISTRICT
 HOWARD COUNTY, MARYLAND

HOWARD RESEARCH AND DEVELOPMENT CORP.
 THE VILLAGE OF CROSS KEYS - BALTIMORE, MARYLAND 21210

PROJECT AREA
VILLAGE OF HARPER'S CHOICE
 SECTION 5 VILLAGE CENTER AREA 2

PROJECT TITLE
PLAN & PROFILE
OLD TUCKER ROW

Des. By: T.S. Scale: AS NOTED
 Dwn. By: F.T. Date: DEC. 19, 1969
 Ck'd By: P.A.P. Approved

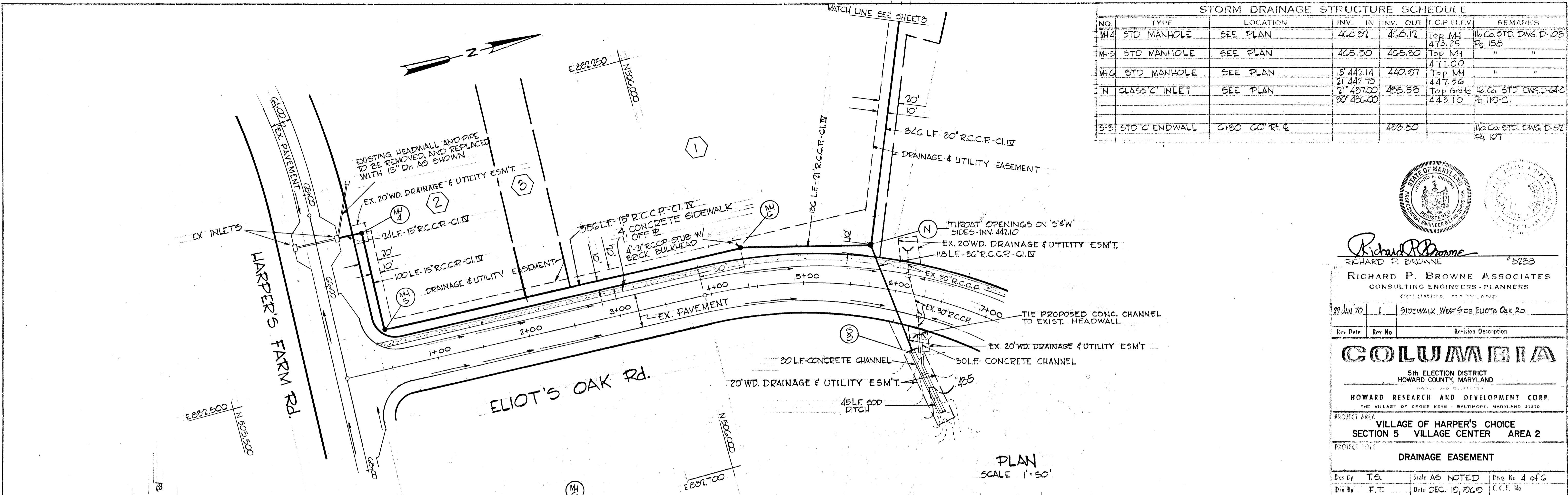


LEGEND

AS BUILT MARCH 5, 1974
 J.H.L.

PLAN
 REVISIONS
 NO. 1
 DATE
 BY
 CHECKED
 DATE
 BY

PROFILE
 REVISIONS
 NO. 1
 DATE
 BY
 CHECKED
 DATE
 BY



STORM DRAINAGE STRUCTURE SCHEDULE						
NO.	TYPE	LOCATION	INV. IN	INV. OUT	I.C.P. ELEV.	REMARKS
MH-4	STD MANHOLE	SEE PLAN	463.82	463.12	Top MH 473.25	Ho Co. STD. DWG. D-103 Pg. 15B
MH-5	STD MANHOLE	SEE PLAN	465.50	465.80	Top MH 471.00	"
MH-6	STD MANHOLE	SEE PLAN	15' 442.14 21' 442.75	440.97	Top MH 447.56	"
N	GLASS 'C' INLET	SEE PLAN	21' 487.00 30' 486.00	485.53	Top Grate 443.10	Ho Co. STD. DWG. D-242 Pg. 110-C
5-31	STD 'C' ENDWALL	6' 80' CO. RT. &		488.50		Ho Co. STD. DWG. D-52 Pg. 107

Richard P. Browne
 RICHARD P. BROWNE ASSOCIATES
 CONSULTING ENGINEERS - PLANNERS
 COLUMBIA, MARYLAND

29 JAN 70

Rev Date Rev No Revision Description

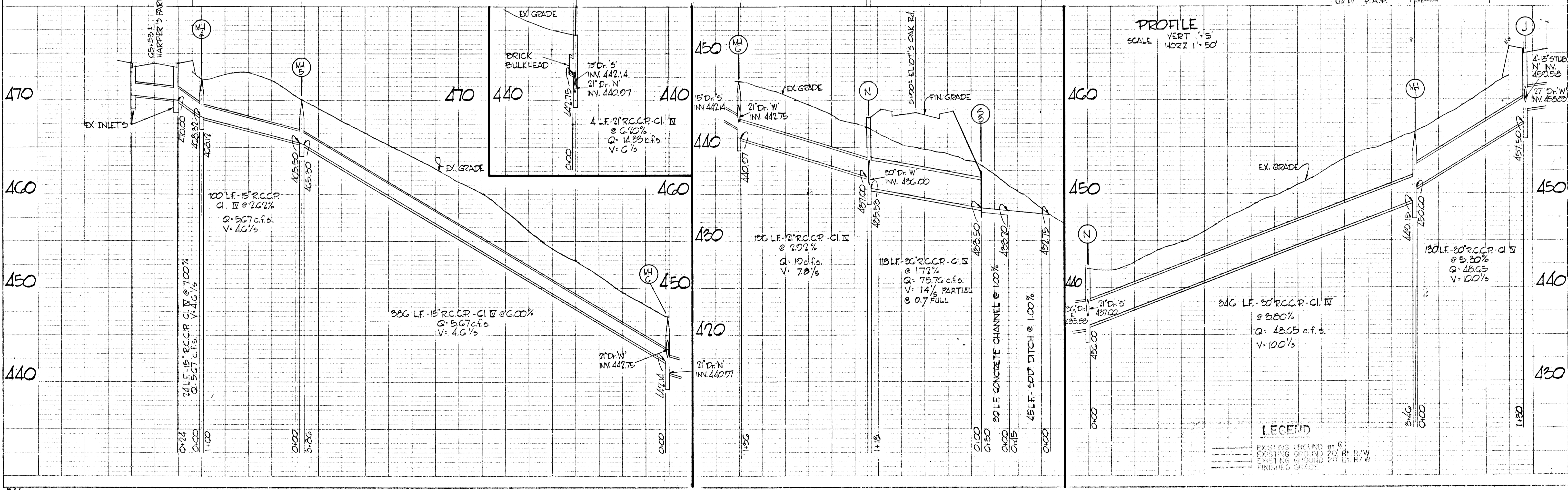
COLUMBIA
 5th ELECTION DISTRICT
 HOWARD COUNTY, MARYLAND

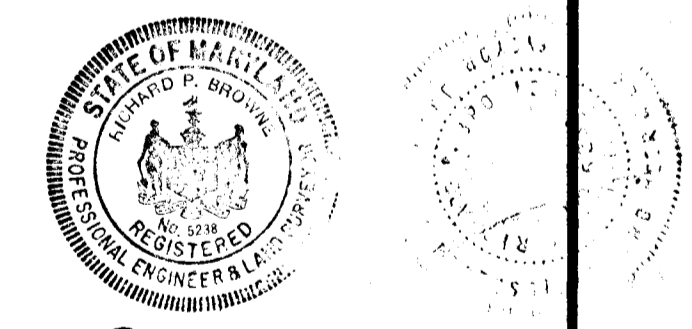
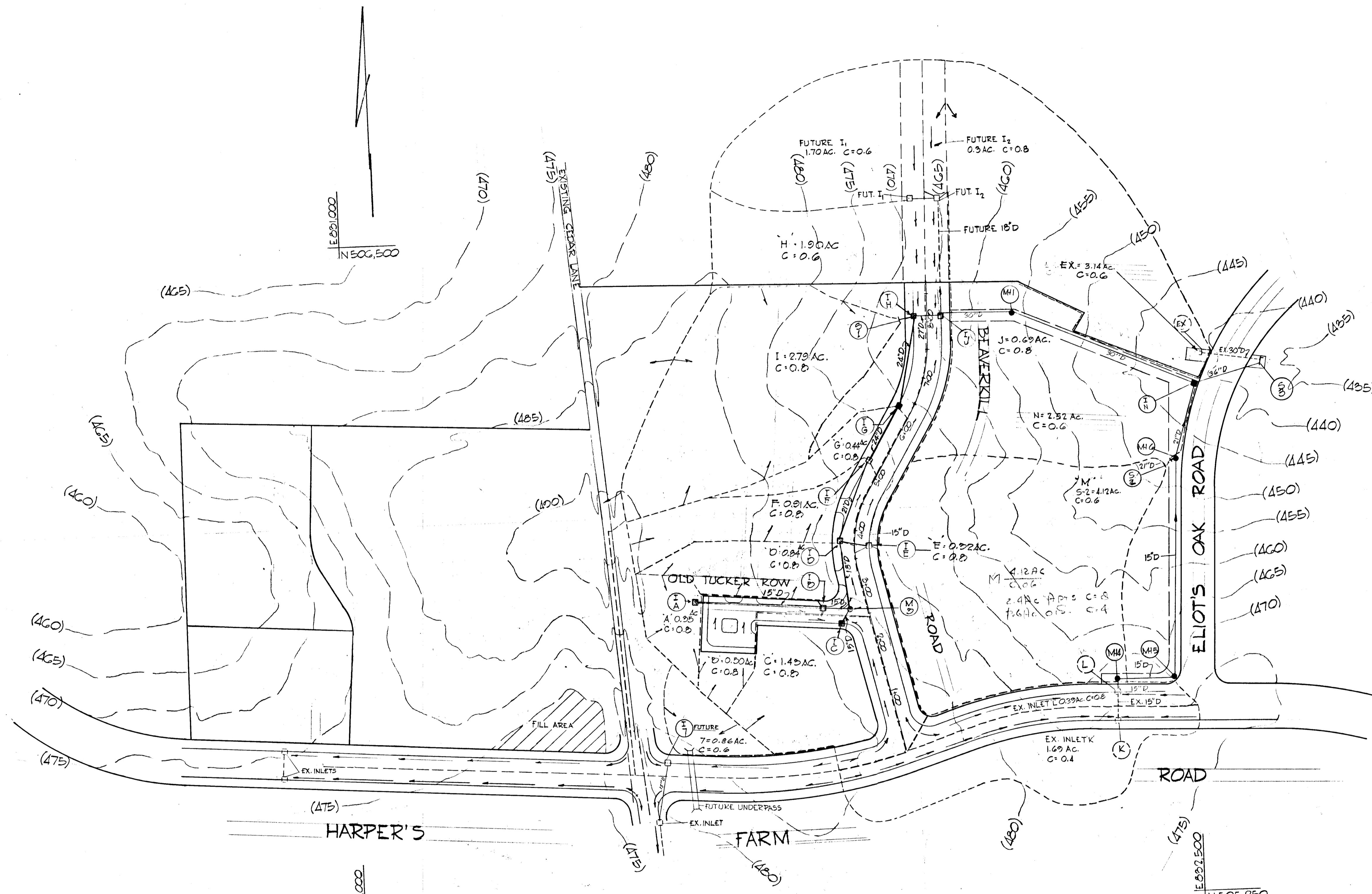
HOWARD RESEARCH AND DEVELOPMENT CORP.
 THE VILLAGE OF CROSS KEYS - BALTIMORE, MARYLAND 21210

PROJECT AREA
 VILLAGE OF HARPER'S CHOICE
 SECTION 5 VILLAGE CENTER AREA 2

PROJECT TITLE
 DRAINAGE EASEMENT

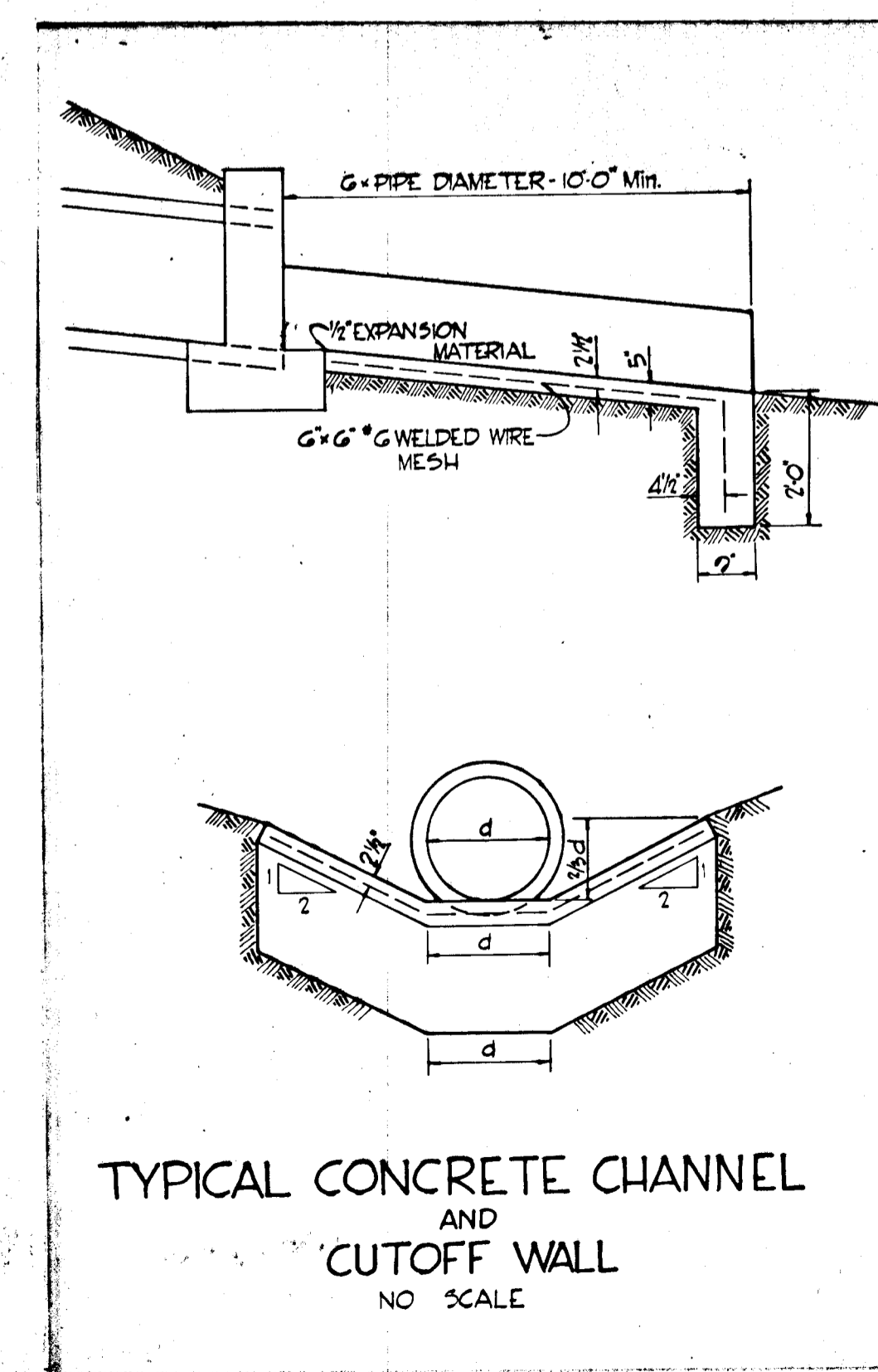
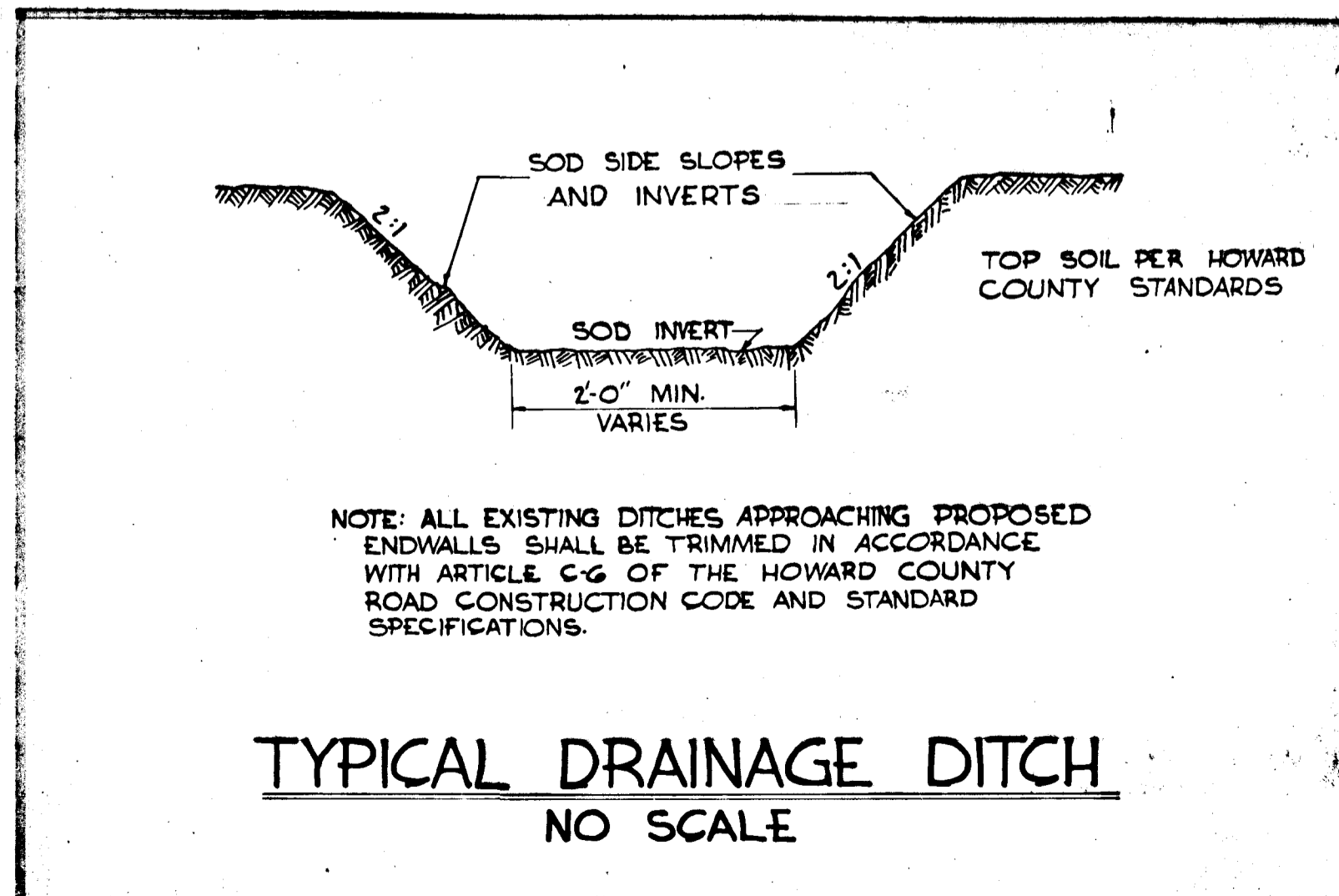
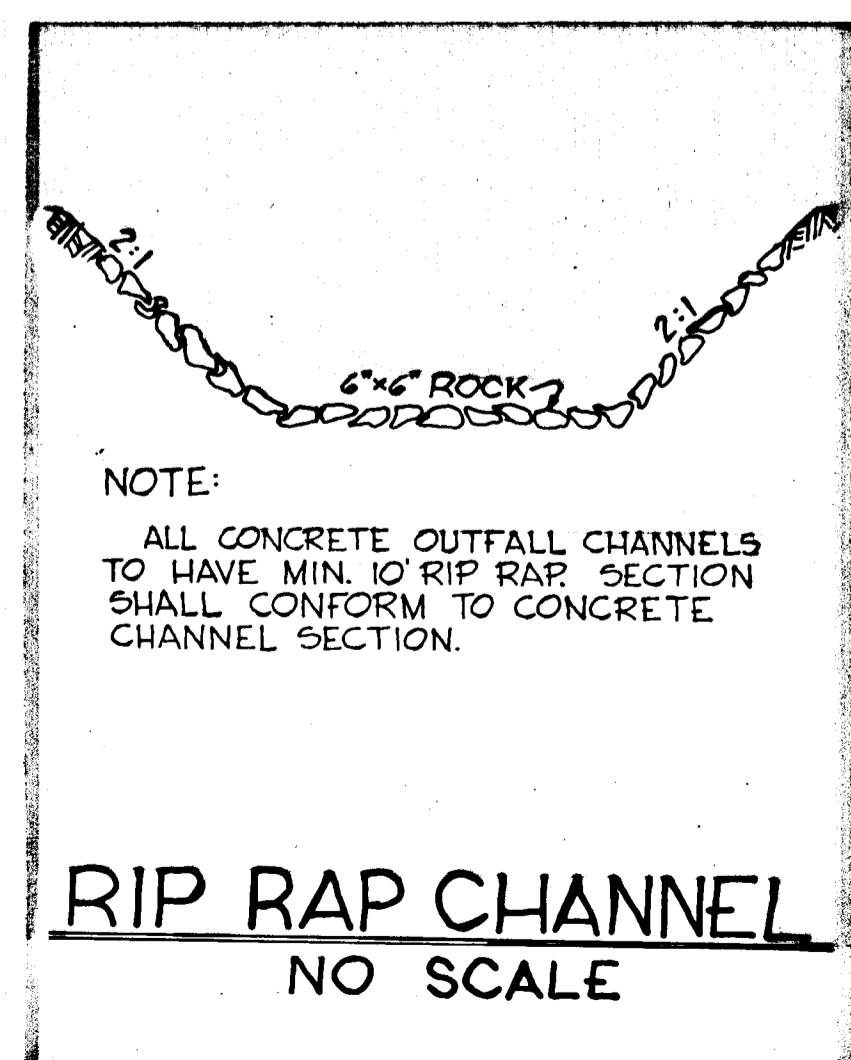
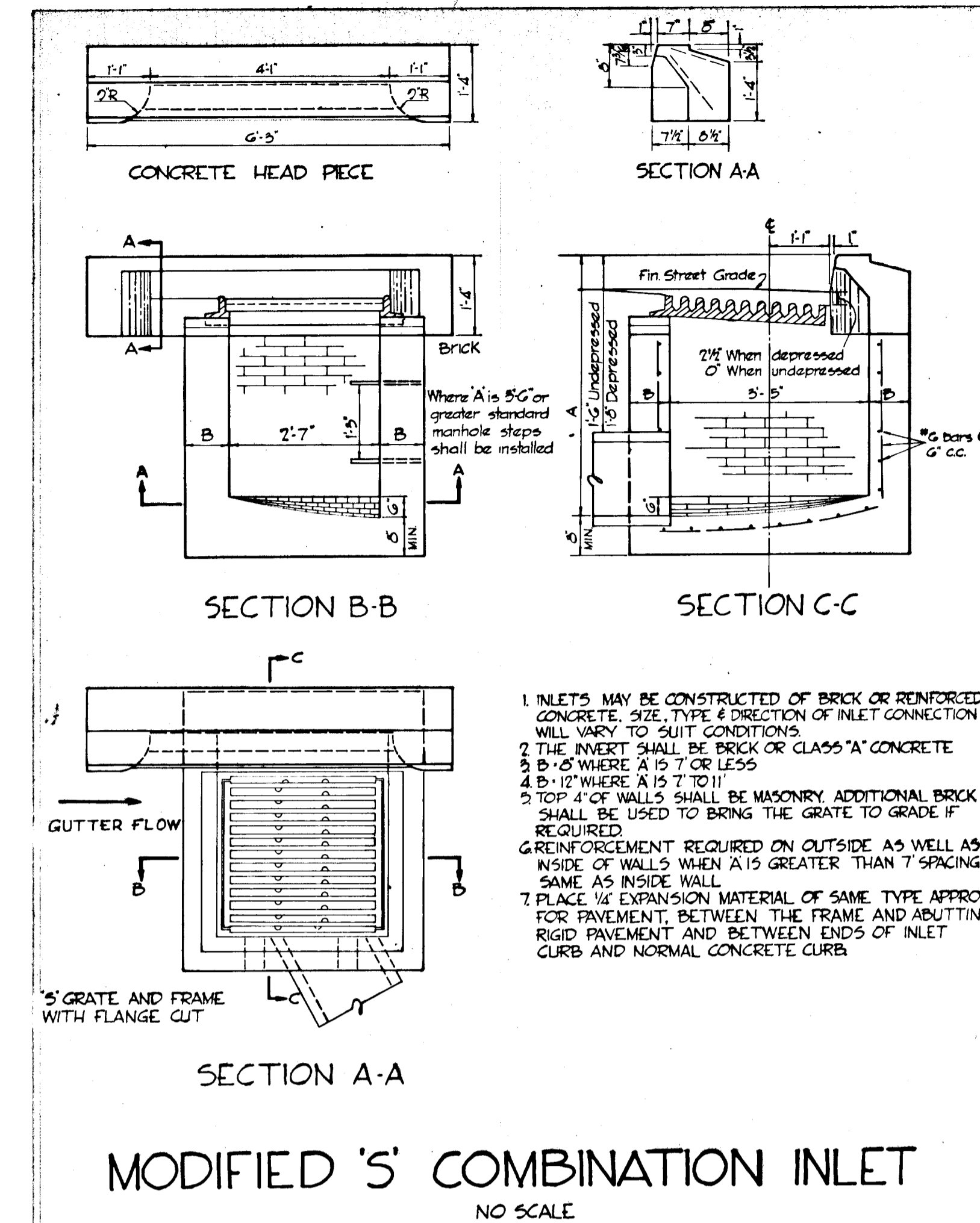
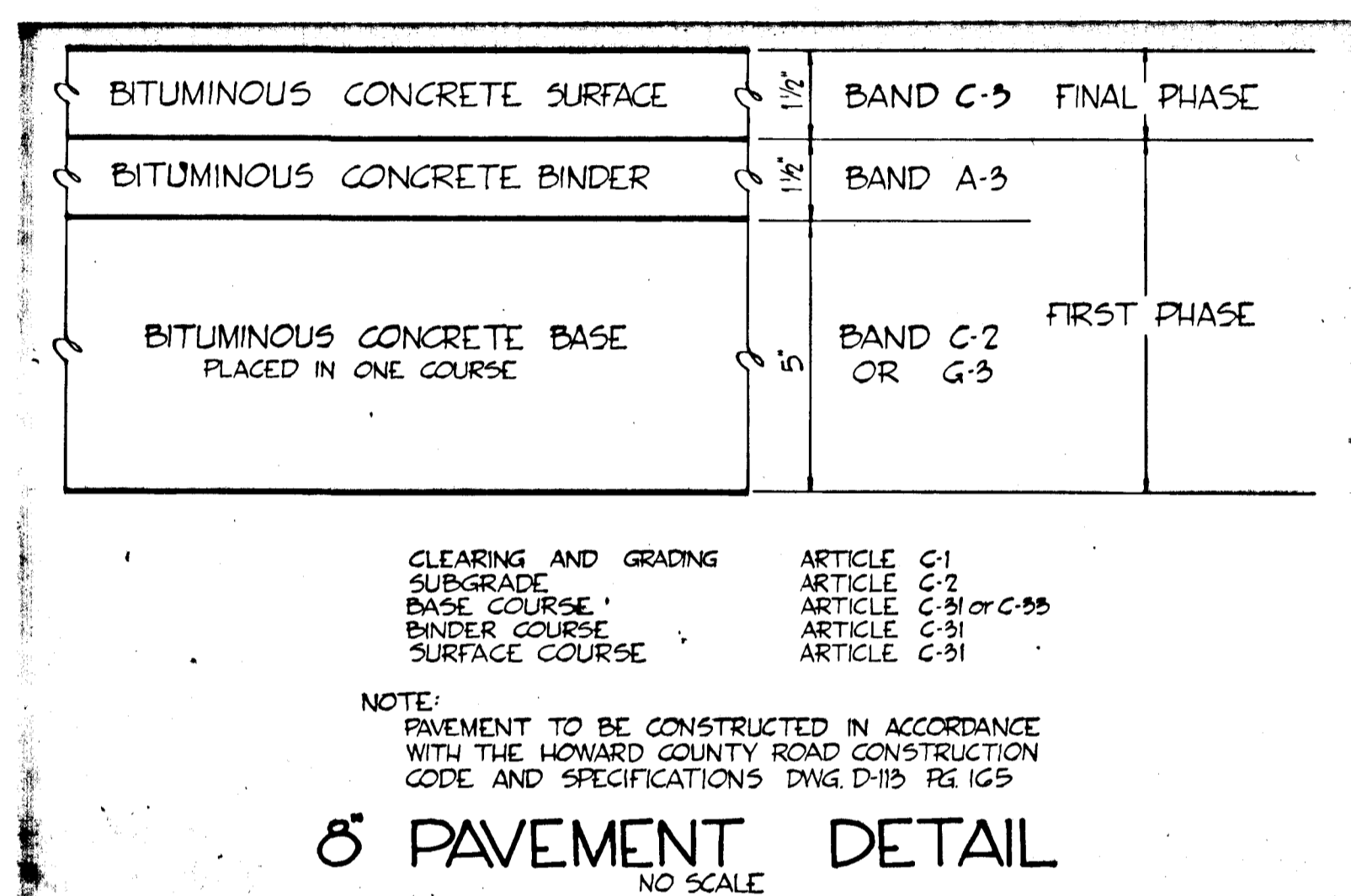
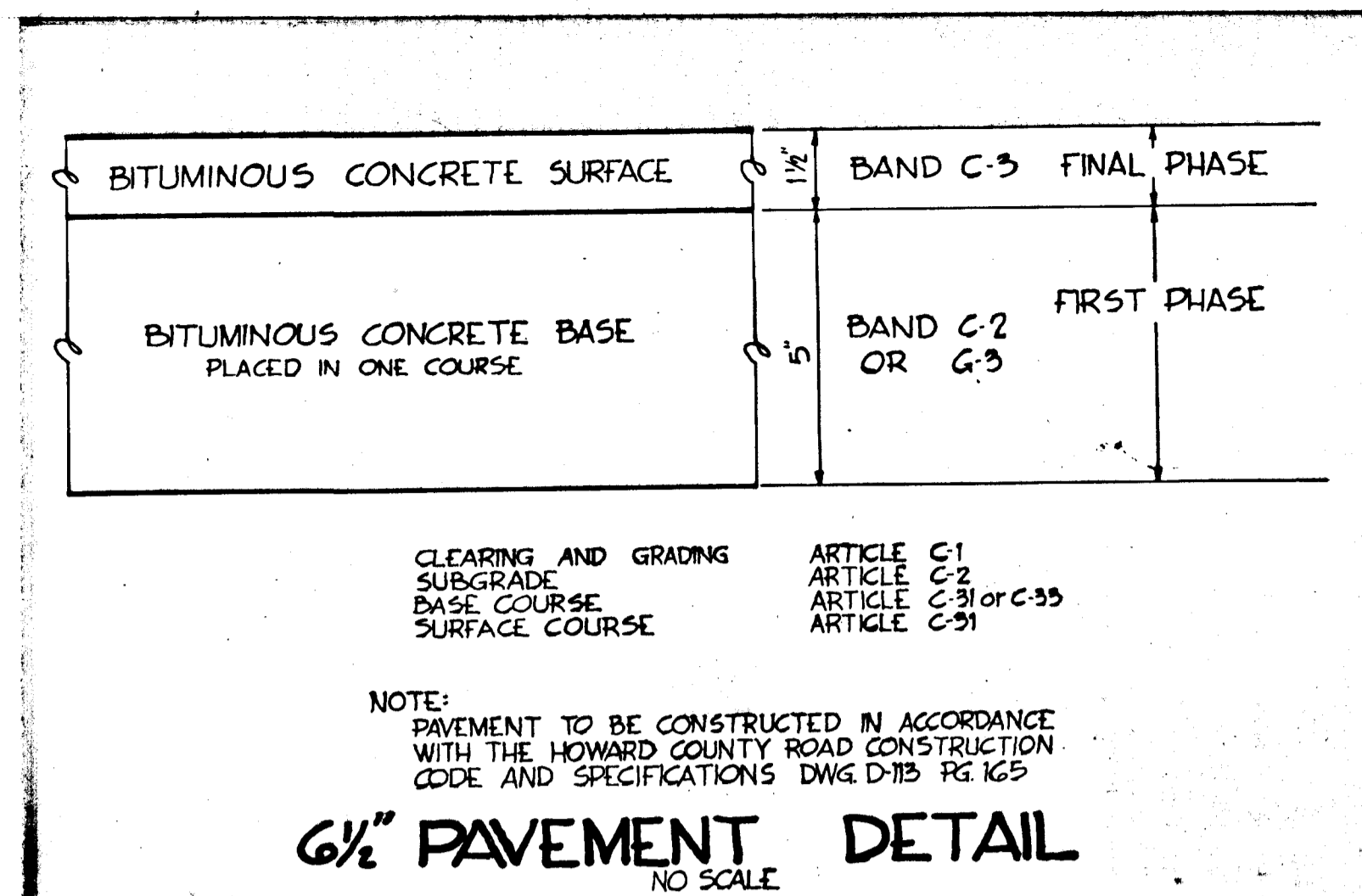
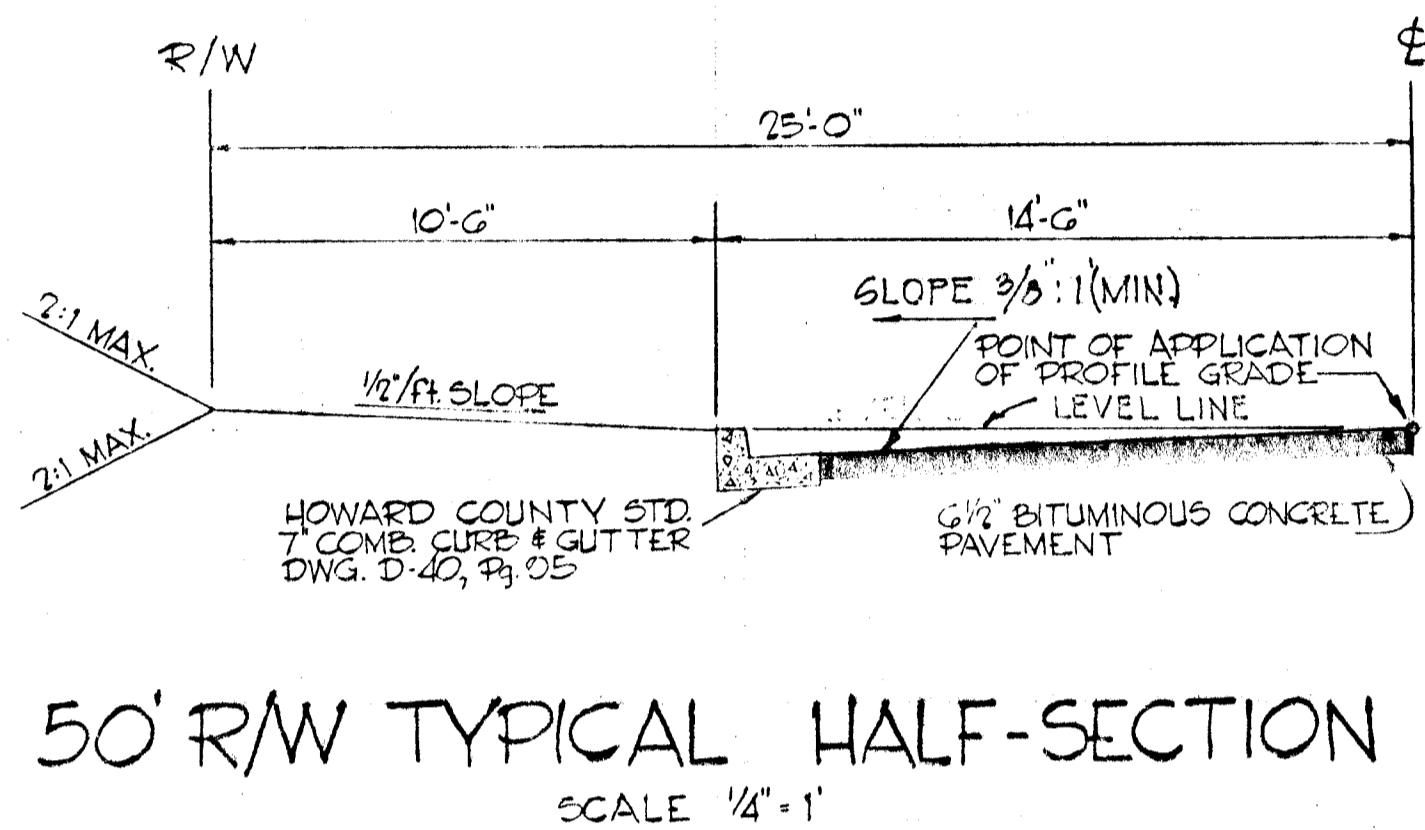
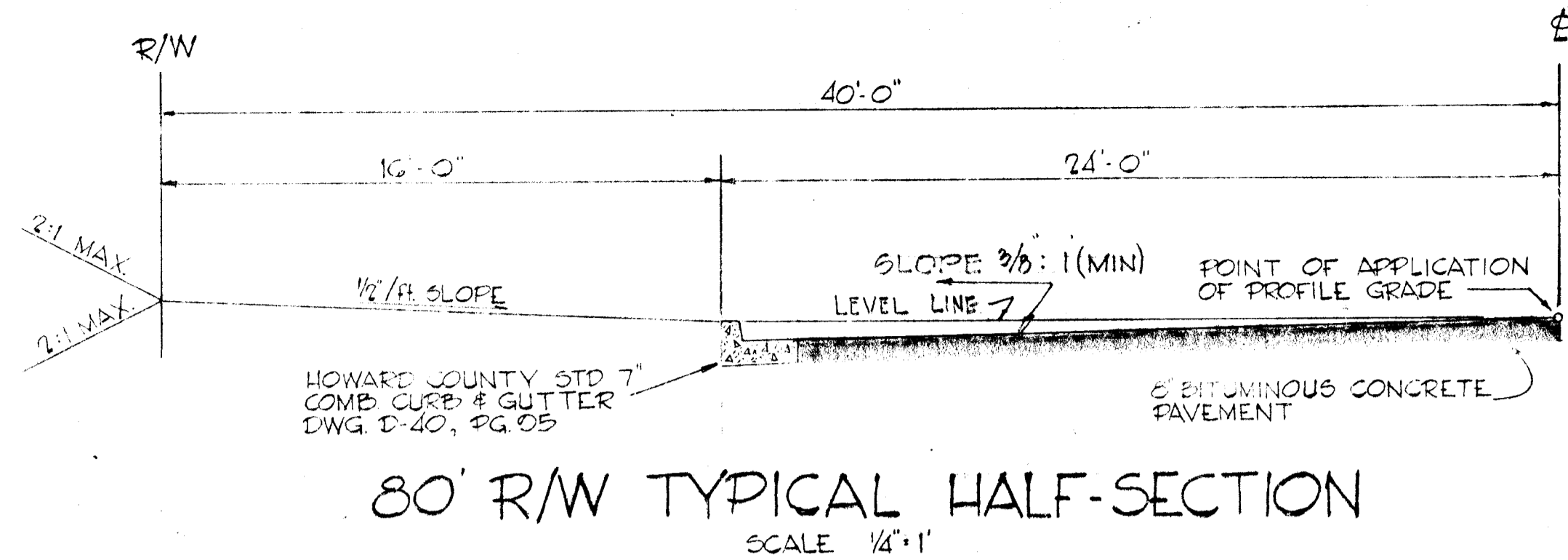
Des By T.S. Scale AS NOTED Dwg No 4 of 6
 Dwn By F.T. Date DEC. 10, 1969 C.C.T. No
 Chk By P.A.P.





Richard P. Browne
 RICHARD P. BROWNE
 RICHARD P. BROWNE ASSOCIATES
 CONSULTING ENGINEERS - PLANNERS
 COLUMBIA, MARYLAND

Rev Date	Rev No	Revision Description
COLUMBIA		
5th ELECTION DISTRICT HOWARD COUNTY, MARYLAND		
OWNER AND DEVELOPER HOWARD RESEARCH AND DEVELOPMENT CORP. THE VILLAGE OF CROSS KEYS - BALTIMORE, MARYLAND 21210		
PROJECT AREA		
VILLAGE OF HARPER'S CHOICE SECTION 5 VILLAGE CENTER AREA 2		
PROJECT TITLE		
DRAINAGE AREA MAP		
Des By T.S.	Scale 1"=100'	Dwg No 5 of 6
Drn By FT & J.E.	Date DEC. 12, 1960	C.C.F. No
Chk By P.A.P.	Approved	



Richard P. Browne
RICHARD P. BROWNE

RICHARD P. BROWNE ASSOCIATES
CONSULTING ENGINEERS - PLANNERS
COLUMBIA, MARYLAND

Rev Date	Rev No	Revision Description

COLUMBIA
5th ELECTION DISTRICT
HOWARD COUNTY, MARYLAND

HOWARD RESEARCH AND DEVELOPMENT CORP.
THE VILLAGE OF CROSS KEYS - BALTIMORE, MARYLAND 21210

PROJECT AREA: VILLAGE OF HARPER'S CHOICE
SECTION 5 VILLAGE CENTER AREA 2

PROJECT TITLE: DETAILS

Des By: L.S.	Scale: AS NOTED	Dwg No: G-06-G
Drn By: RYONE	Date: DEC. 10, 1967	C.C.F. No
Chk By:	Approved	