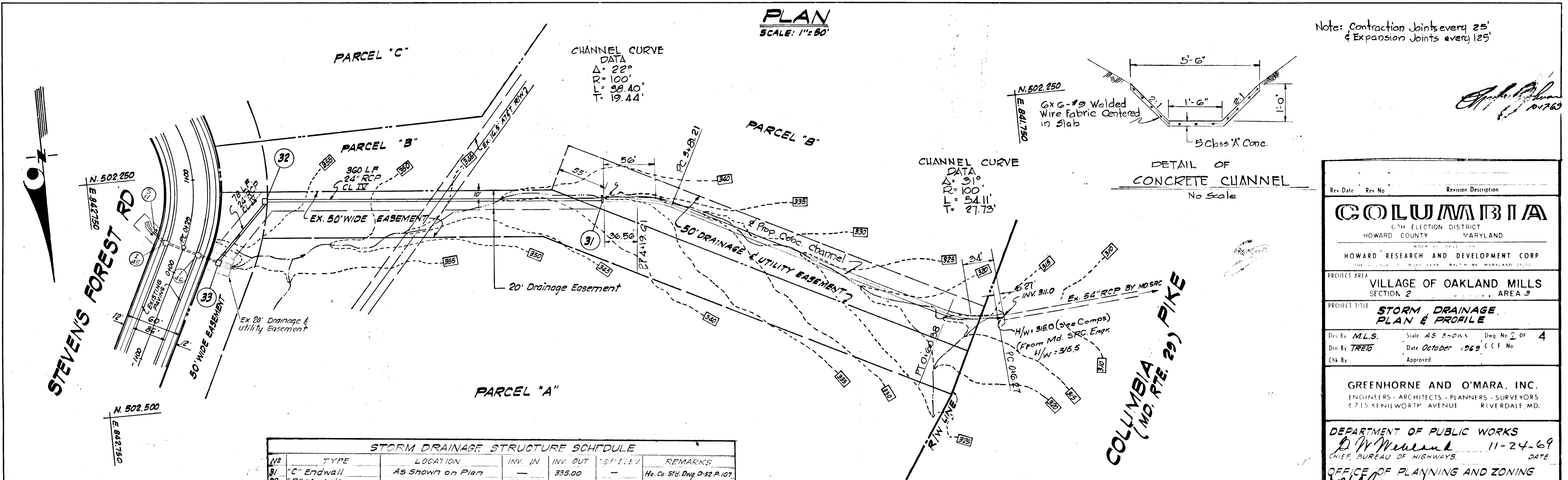




DATE  
BY  
SURVEYED  
PLOTTED  
CHECKED  
NOTE BOOK  
NO.

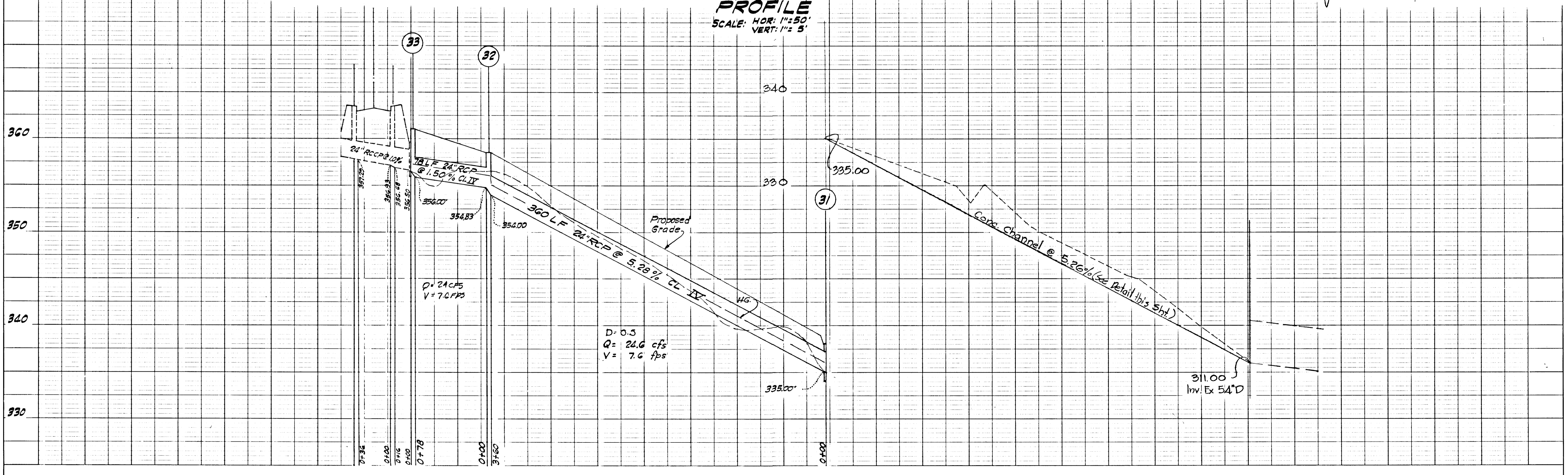
DATE  
BY  
SURVEYED  
PLOTTED  
CHECKED  
NOTE BOOK  
NO.



Note: Contraction Joints every 25'  
& Expansion Joints every 125'

STORM DRAINAGE STRUCTURE SCHEDULE

NO.	TYPE	LOCATION	INV. IN	INV. OUT	TOP ELEV.	REMARKS
31	"C" Endwall	As Shown on Plan	335.00	335.00	335.00	Ho. Co. 5th Dwg. D-52 P.107
32	"B" Manhole	" " " "	354.83	354.00	358.50	See Detail SH. 3 of 5
33	"K" INLET	" " " "	356.50	356.00	361.00	Ho. Co. 5th Dwg. D-93 P.148



Rev. Date Rev. No. Revision Description

**COLUMBIA**  
6TH ELECTION DISTRICT  
HOWARD COUNTY MARYLAND

HOWARD RESEARCH AND DEVELOPMENT CORP.  
1000 W. BROAD ST. BALTIMORE, MARYLAND 21201

PROJECT AREA: VILLAGE OF OAKLAND MILLS SECTION 2 AREA 3

PROJECT TITLE: STORM DRAINAGE PLAN & PROFILE

Des. By: M.L.S. Scale: AS SHOWN Dwg. No. 2 OF 4  
Din. By: TREG Date: October 1969 CCF No.  
Chk. By: Approved

GREENHORNE AND O'MARA, INC.  
ENGINEERS - ARCHITECTS - PLANNERS - SURVEYORS  
6715 KENILWORTH AVENUE RIVERDALE, MD.

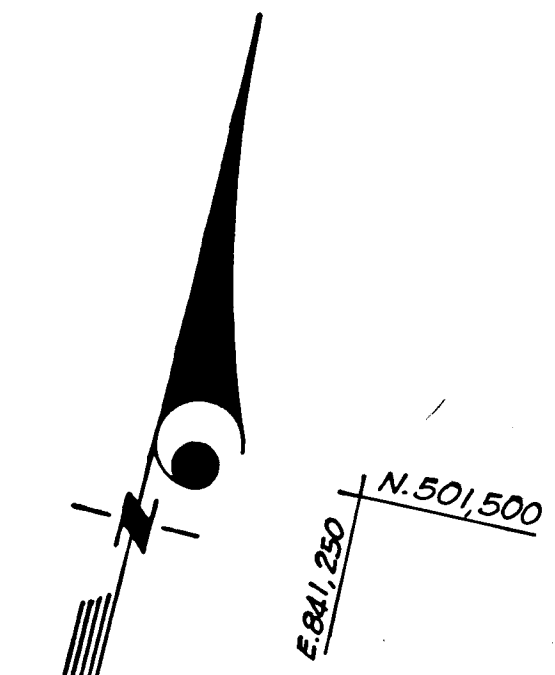
DEPARTMENT OF PUBLIC WORKS  
D. W. Newland 11-24-69  
CHIEF, BUREAU OF HIGHWAYS DATE

OFFICE OF PLANNING AND ZONING  
J. H. Clouston 11-24-69  
ENGINEER DIV. OF LAND DEVELOPMENT DATE



*Robert Johnson*  
10-17-69

**PLAN**  
SCALE: 1"=50'



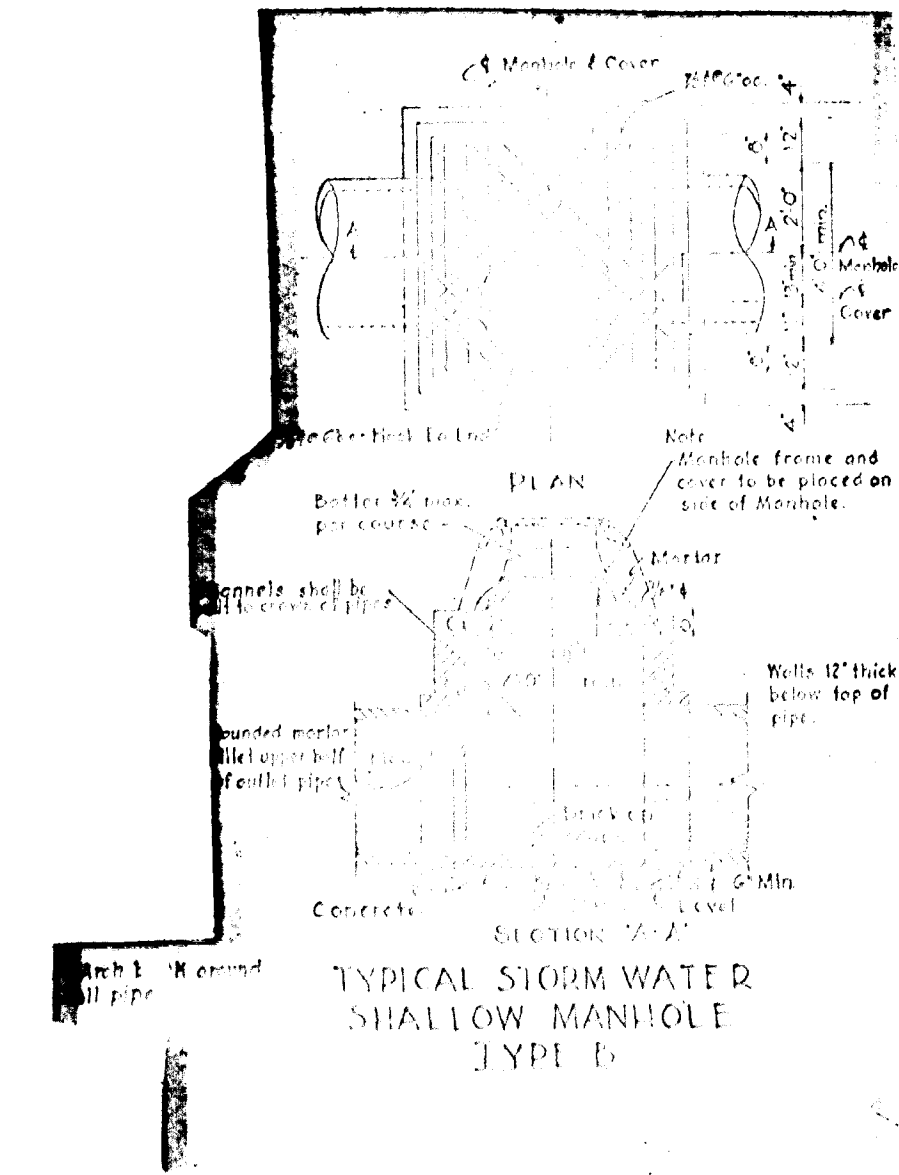
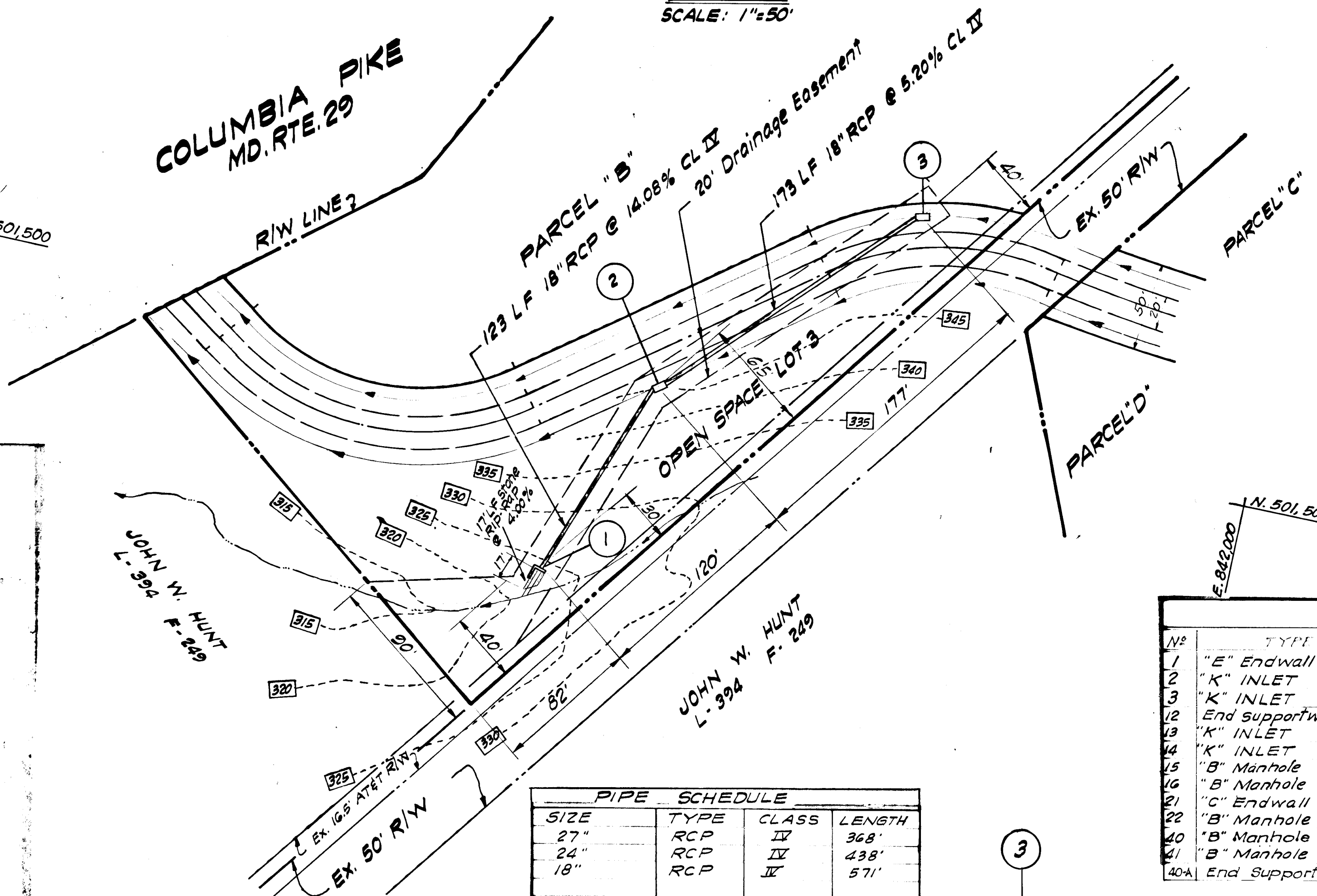
**COLUMBIA PIKE**  
MD. RTE. 29

DATE	
BY	
REVISIONS	
NO.	
DATE	
BY	
DESCRIPTION	

PLAN  
NOTE BOOK  
NO.

DATE	
BY	
REVISIONS	
NO.	
DATE	
BY	
DESCRIPTION	

PROFILE  
NOTE BOOK  
NO.



**PIPE SCHEDULE**

SIZE	TYPE	CLASS	LENGTH
27"	RCP	IX	368'
24"	RCP	IX	438'
18"	RCP	IX	571'

**STORM DRAINAGE STRUCTURE SCHEDULE**

NO.	TYPE	LOCATION	INV. IN	INV. OUT	TOP ELEV.	REMARKS
1	"E" Endwall	As Shown on Plan		321.68		Ho. Co. Std. Dwg. D-54 P-109
2	"K" INLET	" " " "	341.50	339.00	345.00	Ho. Co. Std. Dwg. D-93 P-148
3	"K" INLET	" " " "		350.50	354.00	" " " " " "
12	End Supportwall	" " " " Sht. 3 of 5		362.92		" " " " " "
13	"K" INLET	" " " "	364.50	363.30	370.00	" " " " " D-93 P-148
14	"K" INLET	" " " "	366.80	365.00	370.00	" " " " " "
15	"B" Manhole	" " " "	374.50	374.00	378.00	See Detail Sht. 3 of 5
16	"B" Manhole	" " " "	378.17	377.50	382.00	" " " " " "
21	"C" Endwall	" " " "	368.50			Ho. Co. Std. Dwg. D-52 P-107
22	"B" Manhole	" " " "	382.75	382.50	386.00	See Detail Sht. 3 of 5
23	"B" Manhole	" " " "	381.53	381.40	388.00	" " " " " "
24	"B" Manhole	" " " "	374.20	373.50	377.50	See Detail Sht. 3 of 5
40A	End Supportwall	" " " "		358.53		" " " " " "

Rev. Date:    Rev. No.:    Revision Description:

**COLUMBIA**  
6TH ELECTION DISTRICT  
HOWARD COUNTY    MARYLAND

HOWARD RESEARCH AND DEVELOPMENT CORP.

PROJECT AREA: **VILLAGE OF OAKLAND MILLS**  
SECTION 2.1    AREA 3

PROJECT TITLE: **STORM DRAINAGE PLAN & PROFILE**

Des. By: **MLS**    Scale: **AS SHOWN**    Dwg. No. **OF 4**  
 Dwn. By: **TREID**    Date: **October 1969**    C.C.F. No.  
 Chk. By:    Approved:

**GREENHORNE AND O'MARA, INC.**  
ENGINEERS - ARCHITECTS - PLANNERS - SURVEYORS  
6715 KENILWORTH AVENUE    RIVERDALE MD.

DEPARTMENT OF PUBLIC WORKS  
*D. M. McKeand*    11-24-69    DATE  
OFFICE OF PLANNING AND ZONING  
*J. H. Cleary*    11-24-69    DATE  
ENGINEERS DIVISION OF LAND DEVELOPMENT, DATE

**PROFILE**  
SCALE: HOR: 1"=50'  
VERT: 1"=5'

