

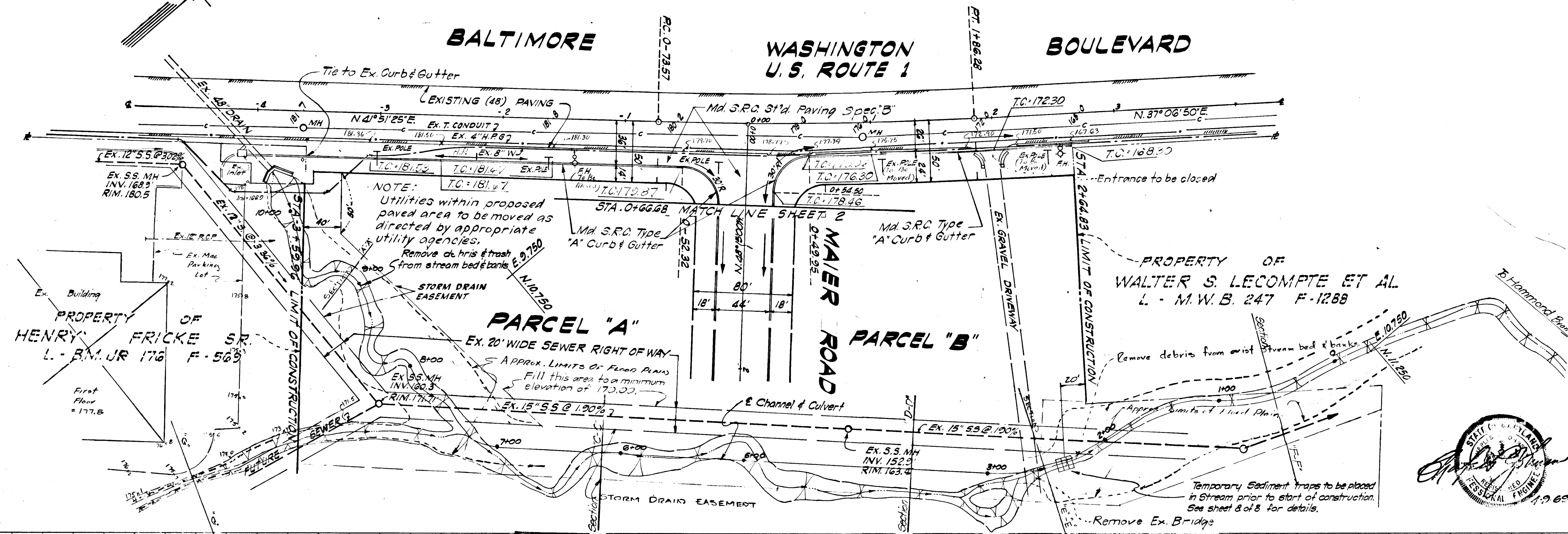
DATE	
BY	
NO.	
REVISIONS	
1. APPROVED	
2. CHECKED	
3. DRAWN	
4. IN CHARGE	

DATE	
BY	
NO.	
REVISIONS	
1. APPROVED	
2. CHECKED	
3. DRAWN	
4. IN CHARGE	

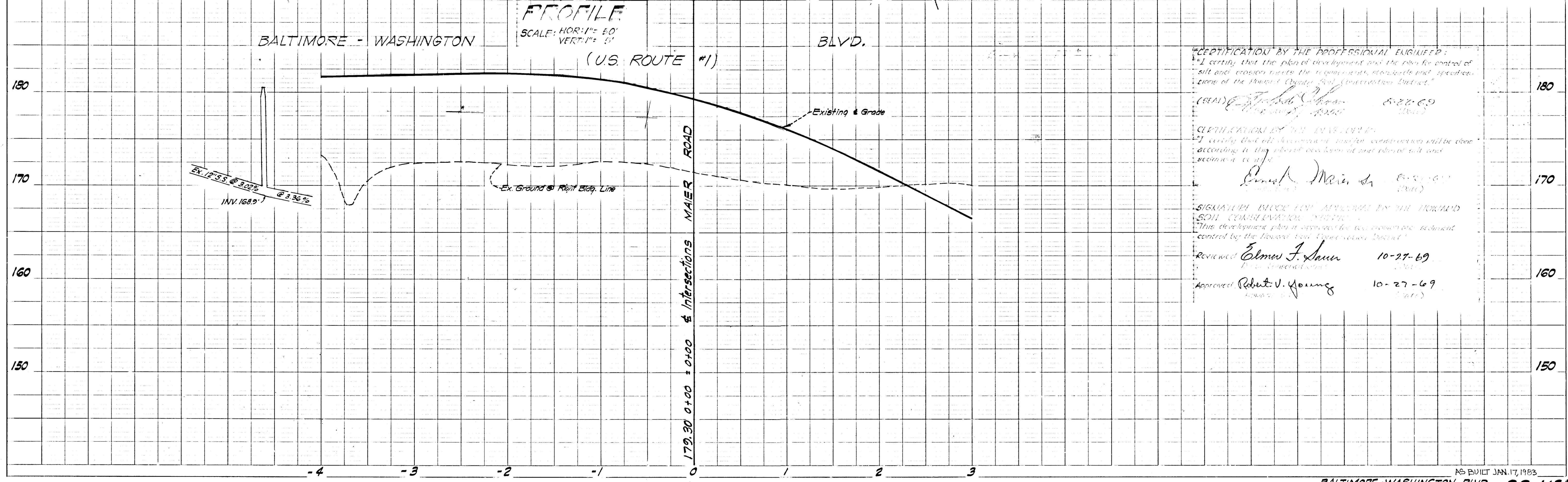
PLAN
SCALE: 1" = 50'

CURVE DATA
 $\Delta = 4^{\circ}40'55''$
 $R = 3180.00'$
 $L = 259.86'$
 $T = 130.00'$
 STA. 0+75.1 TO STA. 1+88.7

NOTE: See sheet 8 of 8 for general notes & erosion control specifications.



PROFILE
SCALE: HOR: 1" = 40' VERT: 1" = 5'



CERTIFICATION BY THE PROFESSIONAL ENGINEER:
 I certify that the plan of development and the plan for control of silt and erosion meets the requirements, standards and specifications of the Howard County Soil Conservation District.
 (SEAL) *Robert V. Young* 10-27-69

CERTIFICATION BY THE DEVELOPER:
 I certify that all development and/or construction will be done according to the plan of development and erosion control and sediment control.
Robert V. Young 10-27-69

SIGNATURE BLOCK FOR APPROVAL BY THE HOWARD COUNTY SOIL CONSERVATION DISTRICT:
 This development plan is approved for the erosion control sediment control by the Howard County Soil Conservation District.
 Reviewed *Edwin J. Lauer* 10-27-69
 Approved *Robert V. Young* 10-27-69

Rev. Date	Rev. No.	Revision Description

6th ELECTION DISTRICT
 HOWARD COUNTY
 MARYLAND

OWNER AND DEVELOPER
 HOWARD COUNTY JUDICIAL VENUE
 4000 ANNAPOLIS ROAD, ELLENDSBURG, MARYLAND.

PROJECT TITLE
 MAIER INDUSTRIAL PARK
 SECTION ONE

PROJECT TITLE
 CLEAR AND GRUBB
 BALTIMORE WASHINGTON BLVD.

Des. By: J.P.M. FALLS Date: May 15, 1969
 Drawn By: J.P.M. FALLS Date: May 15, 1969
 Chk. By: Approved

PROPERTY OF
 WALTER S. LECOMPTE ET AL.
 L. - M.W.B. 247 F-1288

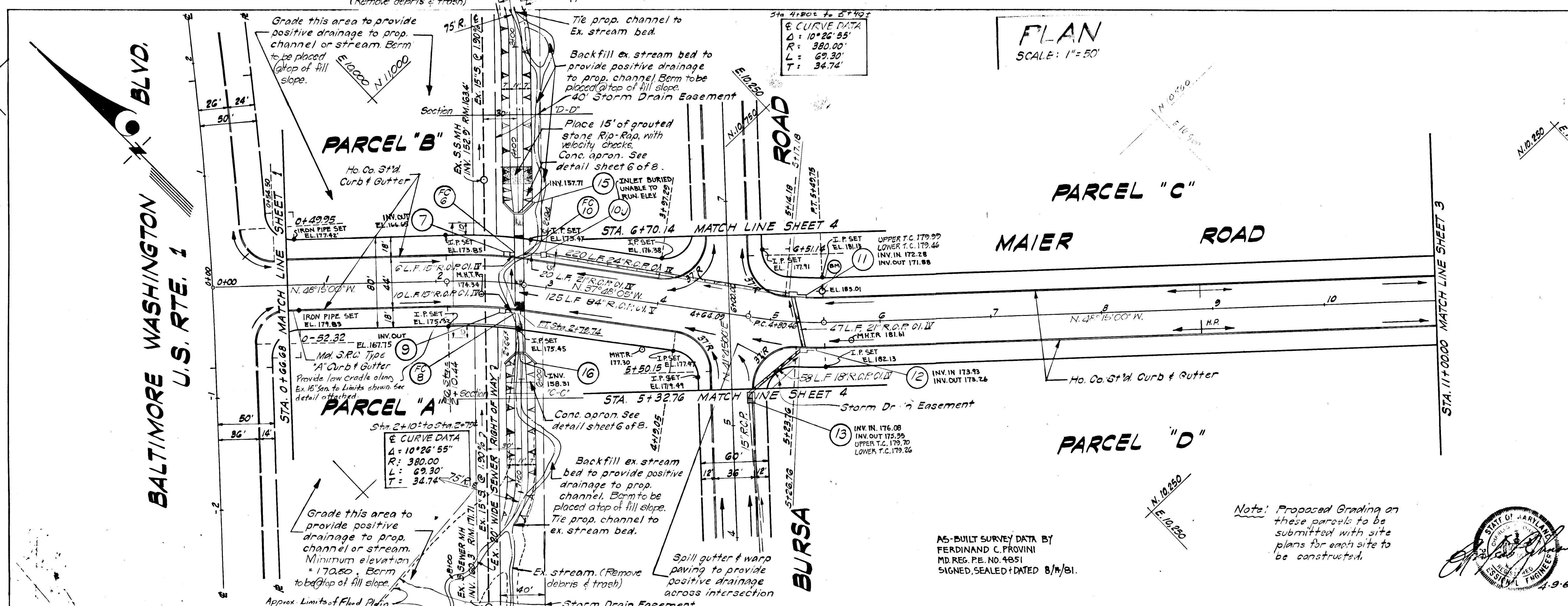
GRUENHORN AND O'MARA, INC.
 ENGINEERS - ARCHITECTS - PLANNERS - SURVEYORS
 6715 KUSHWORTH AVENUE RIVERDALE, MD.

DEPARTMENT OF PUBLIC WORKS
 Lawrence W. Weiland 10-30-69
 OFFICE OF PLANNING AND ZONING
 J.H. Clawson 10-29-69

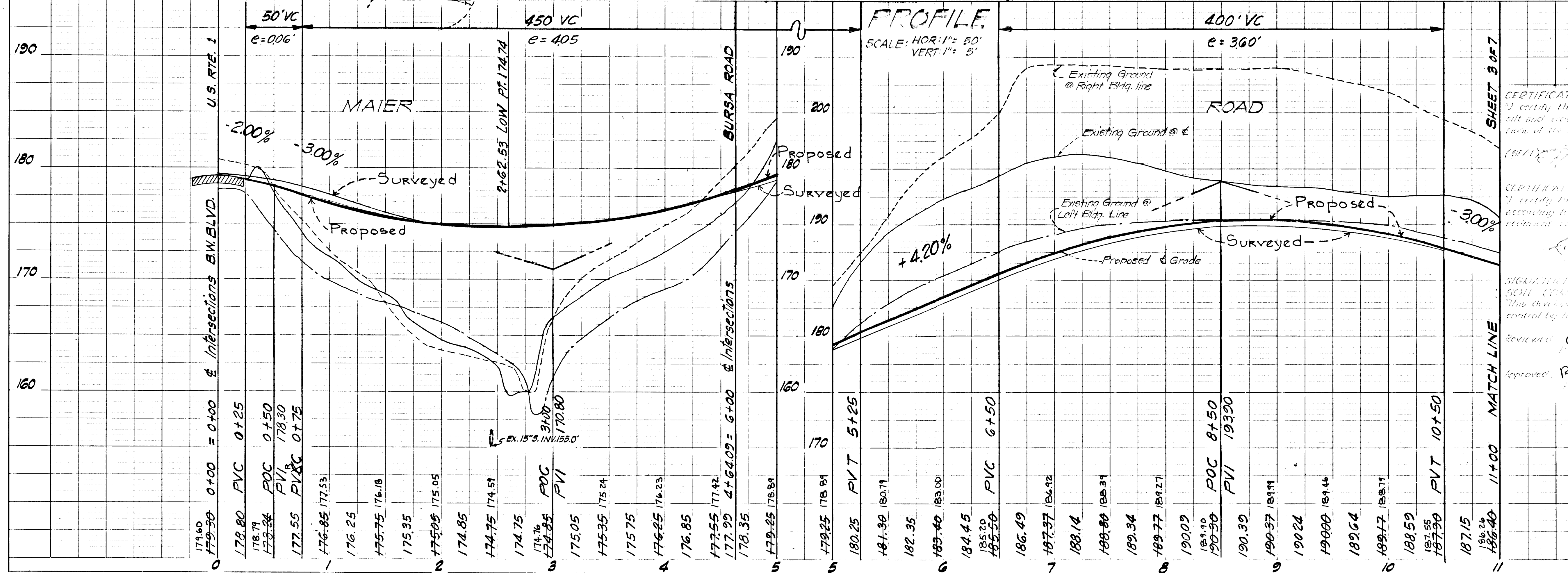
LEGEND
 EX. GROUND @ P.G.L.
 EX. GROUND @ 10' OFF R.W.
 EX. GROUND @ 50' OFF R.W.
 FINISHED GRADE @ P.G.L.

DATE	
BY	
NO.	
NO. OF SHEETS	
NO. OF SHEETS CHECKED	
NO. OF SHEETS REVISIONS	

DATE	
BY	
NO.	
NO. OF SHEETS	
NO. OF SHEETS CHECKED	
NO. OF SHEETS REVISIONS	



Rev. Date	Rev. No.	Revision Description
6 TH ELECTION DISTRICT HOWARD COUNTY MARYLAND		
OWNER AND TITLEHOLDER HOWARD COUNTY, ROUTE 100, BOX 4100 4100 ANNAPOLIS ROAD, ELLENHURST, MARYLAND.		
PROJECT: MAIER INDUSTRIAL PARK SECTION ONE		
PROJECT TITLE: MAIER ROAD		
Des. By	J. L. M. NLS	Scale: As Shown
Div. By	J. L. M. NLS	Date: May 15, 1969
Ch. By		Project No. 2 OF 8
GREENHORN AND O'KARA, INC. ENGINEERS - ARCHITECTS - PLANNERS - SURVEYORS 6715 KUSHWORTH AVENUE RIVERDALE, MD.		
DEPARTMENT OF PUBLIC WORKS Doriselle W. Wehland 10-30-67 CHIEF, DIVISION OF HIGHWAYS		
OFFICE OF PLANNING AND ZONING J. H. Clausen 10-29-69 CHIEF, DIVISION OF LAND DEVELOPMENT		
LEGEND EX. GROUND @ T.S.L. EX. GROUND @ 10' OFF R.O.W. EX. GROUND @ 50' OFF D.R.W. FINISHED GRADE @ F.G.L.		



CERTIFICATION BY THE PROFESSIONAL ENGINEER:
I certify that the plan of development and the plan is control of 200
ft and elevations are in accordance with the requirements, standards and specifications
of the Howard County Soil Conservation District.
Edward J. Shaw 8-22-69 (Date)

CERTIFICATION BY THE DISTRICT:
I certify that all development and/or construction will be done
according to the plan of development and plan of site and
equipment used.
Edward J. Shaw 8-22-69 (Date)

APPROVED BY THE DISTRICT BY THE HOWARD
SOIL CONSERVATION DISTRICT
This development plan is approved for soil conservation district
control by the Howard County Soil Conservation District.
Edward J. Shaw 10-27-69 (Date)

Approved Robert V. Young 10-27-69 (Date)

PLAN
SCALE: 1"=50'

E 107.90
N 115.22

MAIER PLACE

STA. 11+00.00 MATCH LINE SHEET 2

PARCEL 'C'

Sta. 11+04.2 to Sta. 13+51.2
CURVE DATA
Δ = 90°00'00"
R = 100.00'
L = 187.08'
T = 100.00'

I.P. SET
EL. 185.28

I.P. SET
EL. 183.24

I.P. SET
EL. 179.94

I.P. SET
EL. 178.93

MAIER ROAD

ROAD

Place 10'x10' of Grouted Stone Rip Rap along ditch, with Velocity checks.

Meet Ex. Ground with Temporary sod outfall ditch. (Sod all disturbed areas)

Temp. Sod Outfall Ditch

15-Std Timber Barricades

225±

For silt traps & Velocity checks place railroad ties or suitable substitute perpendicular to & of ditch at intervals shown hereon. See detail at Right.

ERNEST MAIER PROPERTY

NOTE: Velocity checks in grouted stone rip rap to be stones (min. 18" long) set in grout with minimum of 12" exposed above grout.

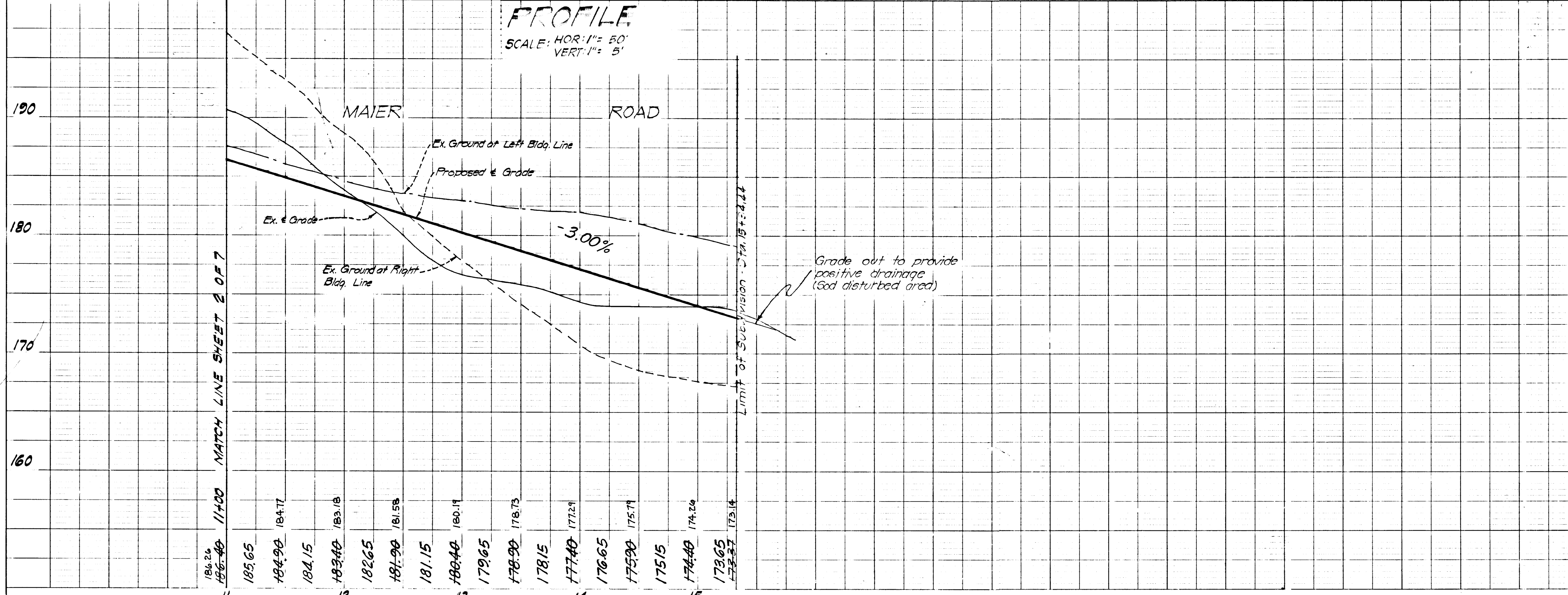
AS-BUILT SURVEY DATA BY FERDINAND C. PROVINI, MD. REG. P.E. NO. 4851, SIGNED, SEALED & DATED 8/14/81

TYPICAL SECTION OF TEMPORARY OUTFALL DITCH WITH RAILROAD TIES AS VELOCITY AND SILT CHECKS
Scale: 1"=5'

Rev. Date	Rev. No.	Revision Description
6th ELECTION DISTRICT HOWARD COUNTY MARYLAND		
OWASSA AND NEWGOLD HOWARD COUNTY, MARYLAND 4700 ANNAPOLIS ROAD, BLADENBURG, MARYLAND.		
PROJECT: MAIER INDUSTRIAL PARK SECTION ONE		
PROJECT: MAIER ROAD		
Des. By	J. H. M. S. M.L.S.	Scale: AS SHOWN
Drawn By	J. H. M. S.	Date: May 13, 1969
Chk. By	J. H. M. S.	Approved
GREENHORN AND O'MARA, INC. ENGINEERS - ARCHITECTS - PLANNERS - SURVEYORS 6715 KENNESAW AVENUE RIVERDALE, MD.		
DEPARTMENT OF PUBLIC WORKS Francis N. Nebend 10-30-69		
OFFICE OF PLANNING AND ZONING J. H. M. S. 10-29-69		
LEGEND EX. GROUND @ 1:6.1 EX. GROUND @ 50' OFF D.K.W. EX. GROUND @ 50' OFF D.K.W. FINISHED GRADE @ F.G.L.		



PROFILE
SCALE: HOR. 1"=50' VERT. 1"=5'



CERTIFICATION BY THE PROFESSIONAL ENGINEER:
I certify that the plan of development and the plan for control of silt and erosion meets the requirements, standards and specifications of the Howard County Soil Conservation District.
Signed: J. H. M. S. M.L.S. 8-22-69

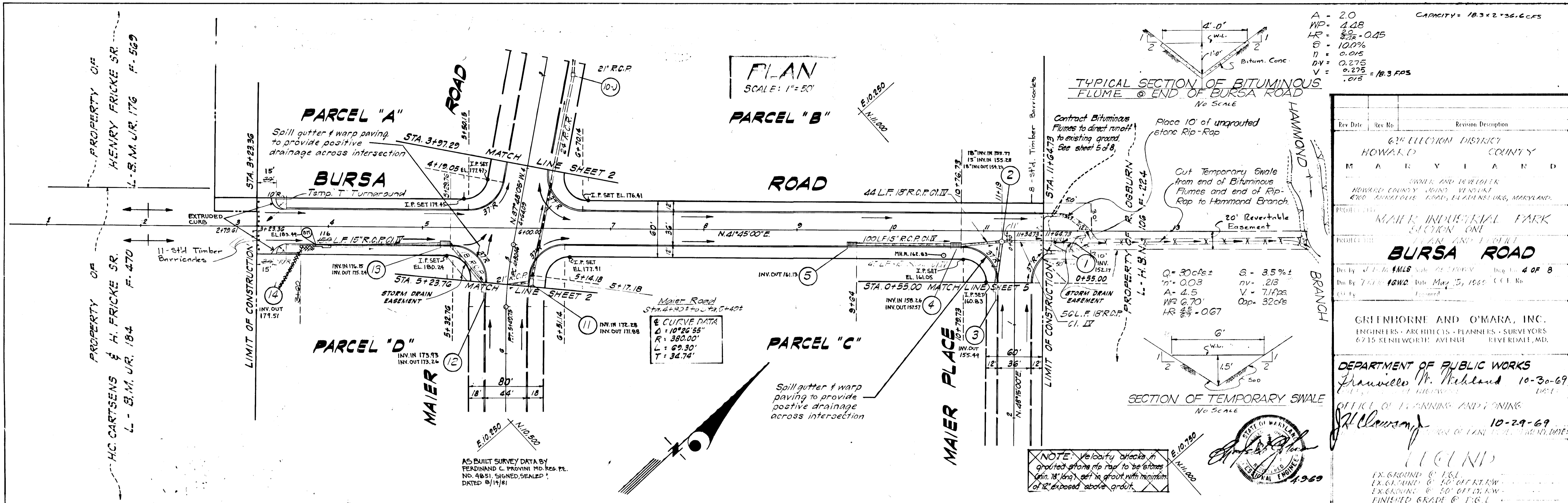
CERTIFICATION BY THE PROFESSIONAL ENGINEER:
I certify that the plan of development and the plan for control of silt and erosion meets the requirements, standards and specifications of the Howard County Soil Conservation District.
Signed: Frank Morrison 8-22-69

SIGNATURE AND SEAL APPROVED BY THE BOARD OF SOIL CONSERVATION DISTRICTS
This document is a part of the record and shall be maintained by the Board of Soil Conservation Districts.
Reviewed: Edward J. Sauer 10-27-69
Approved: Robert V. Young 10-27-69

AS-BUILT JAN. 17, 1983

DATE	
BY	
NO.	
PLAN	SWAYED
NOTE BOOK	NOT SWAYED
NO.	ALIGNED CHECKED
	BY
	DATE
	NO.
	STRUCTURE NOTATION

DATE	
BY	
NO.	
PROFILE	SWAYED
NOTE BOOK	NOT SWAYED
NO.	ALIGNED CHECKED
	BY
	DATE
	NO.
	STRUCTURE NOTATION



6th ELECTION DISTRICT
HOWARD COUNTY
MARYLAND

OWNER AND DEVELOPER
HOWARD COUNTY JOHN V. KELLY
4700 BARKHOLE ROAD, ELKLAND, MARYLAND

PROJECT
MAIER INDUSTRIAL PARK
SECTION ONE
PARK AND MAIER
BURSA ROAD

DESIGNED BY J. P. DANIELS
DRAWN BY J. P. DANIELS
DATE: May 15, 1966
SHEET NO. 4 OF 8

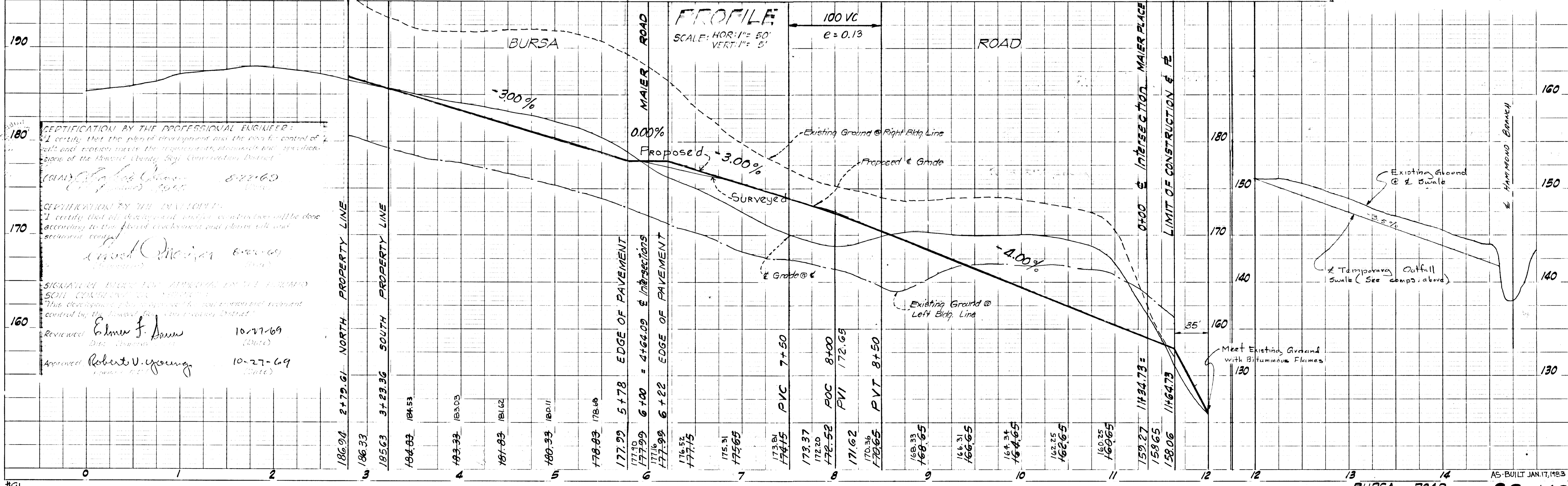
GREENHORNE AND O'MARA, INC.
ENGINEERS - ARCHITECTS - PLANNERS - SURVEYORS
6715 KENILWORTH AVENUE
EVELEDALE, MD.

DEPARTMENT OF PUBLIC WORKS
Frankie M. Highland 10-30-69

OFFICE OF PLANNING AND ZONING
J. H. Clawson 10-29-69

LEGEND

EX. GROUND @ P.G.L.
EX. GROUND @ 50' OFF R.L.W.
EX. GROUND @ 50' OFF L.R.W.
FINISHED GRADE @ P.G.L.



CERTIFICATION BY THE PROFESSIONAL ENGINEER:
I certify that the plan of development and the civil control of the site and easements meet the requirements, standards and specifications of the Howard County Zoning Commission District.

(Signature) 8-27-69

CERTIFICATION BY THE EXAMINER:
I certify that all development and construction will be done according to the plan of development and plans will conform to the zoning code.

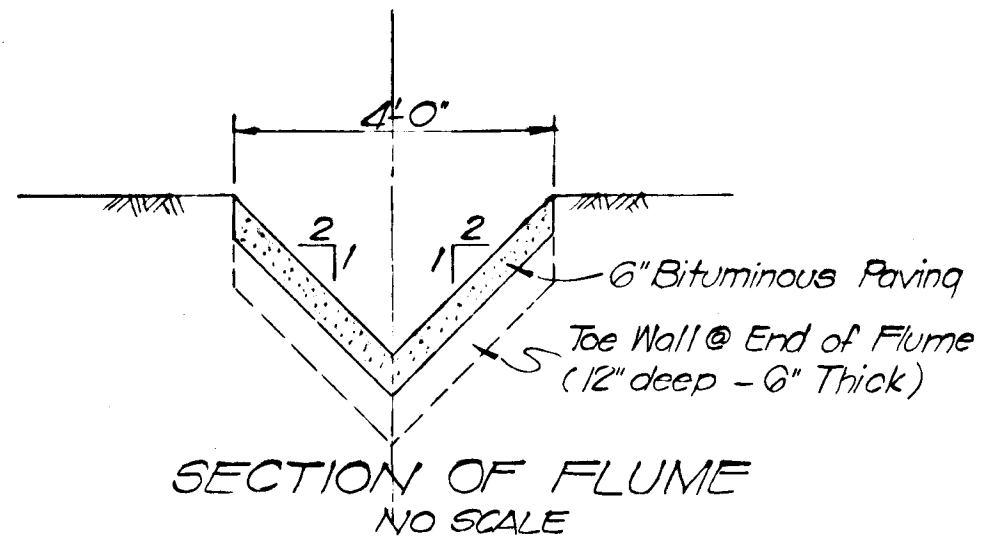
(Signature)

SIGNATURE BOARD FOR APPROVAL IN THE HOWARD COUNTY COMMISSIONERS OFFICE:
This development plan complies with the zoning code and is approved and controlled by the Howard County Commissioners District.

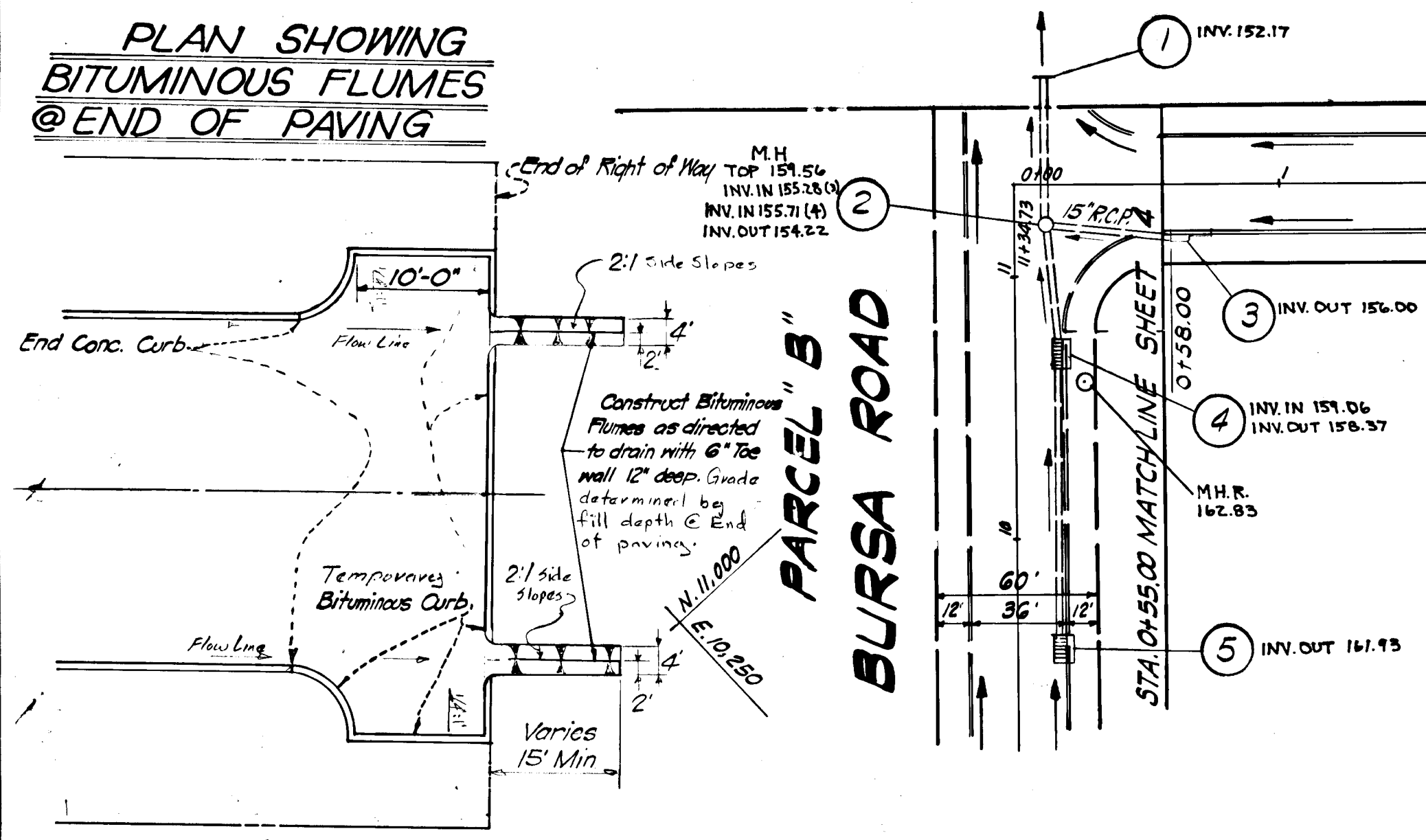
Reviewed: *(Signature)* 10-27-69
Approved: *(Signature)* 10-27-69

PLAN
SCALE: 1" = 50'

PROPERTY OF
R. OGBURN
L. H.B.N. 106 F-224



PLAN SHOWING BITUMINOUS FLUMES @ END OF PAVING



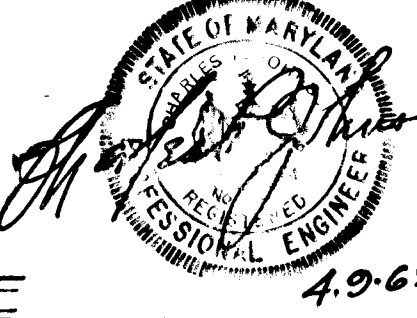
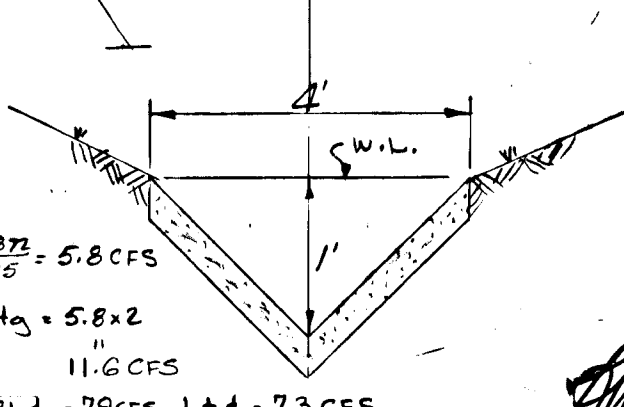
MAIER PLACE

PARCEL "C"

AS-BUILT SURVEY DATA BY
FERDINAND E. PROVINI MD. REG.
NO. 4851, SIGNED, SEALED & DATED
8/14/91.

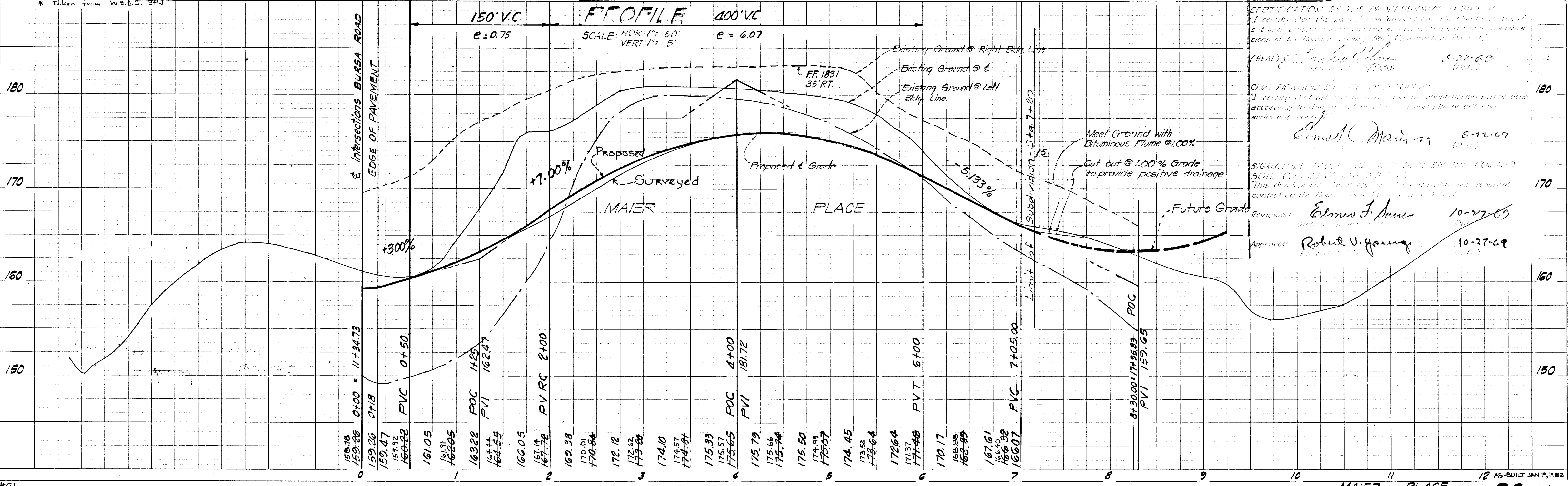
Construct Bituminous Flumes to direct runoff to existing ground. See detail left.

Grade out @ 1.0% to provide positive drainage. (Sod disturbed areas)



Rev Date	Rev No	Revision Description
CONSERVATION DISTRICT HOWARD COUNTY MARYLAND OWNED AND DEVELOPED HOWARD COUNTY JOINT VENUE #1 4700 ANNEVILLE ROAD, ELLENDSBURG, MARYLAND.		
PROJECT SITE MAIER INDUSTRIAL PARK SECTION ONE MAIER PLACE		
Des By	J.T.M. F.M.L.S.	Dec 5 OF 8
Drn By	1910C	May 15, 1969 C.C.E. No.
Chf By		
GREENHOOD AND O'MARA, INC. ENGINEERS - ARCHITECTS - PLANNERS - SURVEYORS 6715 KIRKWOOD AVENUE RIVERDALE, MD		
DEPARTMENT OF PUBLIC WORKS Franklin W. Wehler 10-30-69 OFFICE OF PLANNING AND ZONING H. Clawson 10-29-69 DIVISION OF LAND DEVELOPMENT, DATE		
LEGEND EX-GROUND @ 1.0% EX-GROUND @ 1.0% OFF R.O.W. EX-GROUND @ 1.0% OFF R.O.W. FINISHED GRADE @ 1.0%		

PROFILE



CERTIFICATION BY THE PROFESSIONAL ENGINEER:
I certify that the plan of construction and the profile shown on this drawing were prepared by me or under my direct supervision and that I am a duly licensed Professional Engineer in the State of Maryland.

Signature: *Charles E. ...* 8-22-69

CERTIFICATION BY THE ENGINEER:
I certify that all construction and construction will be done according to this plan and profile and shall not be altered without my written consent.

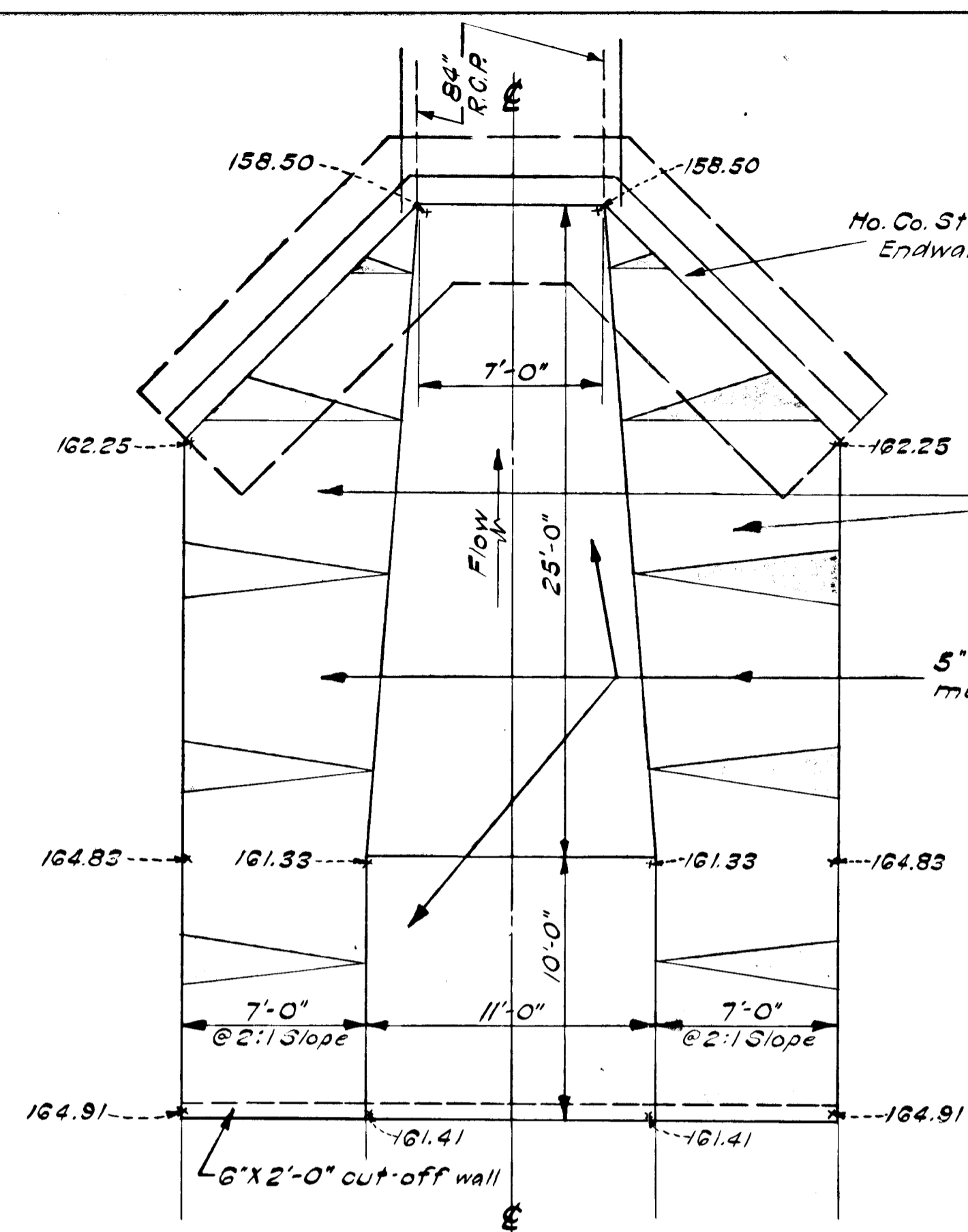
Signature: *Edman J. ...* 8-22-69

SIGNATURE BLOCK FOR APPROVAL BY THE HOWARD COUNTY COMMISSIONERS:
This document plan, profile and construction permit is subject to the control by the Howard County Commissioners.

Reviewed: *Edman J. ...* 10-27-69

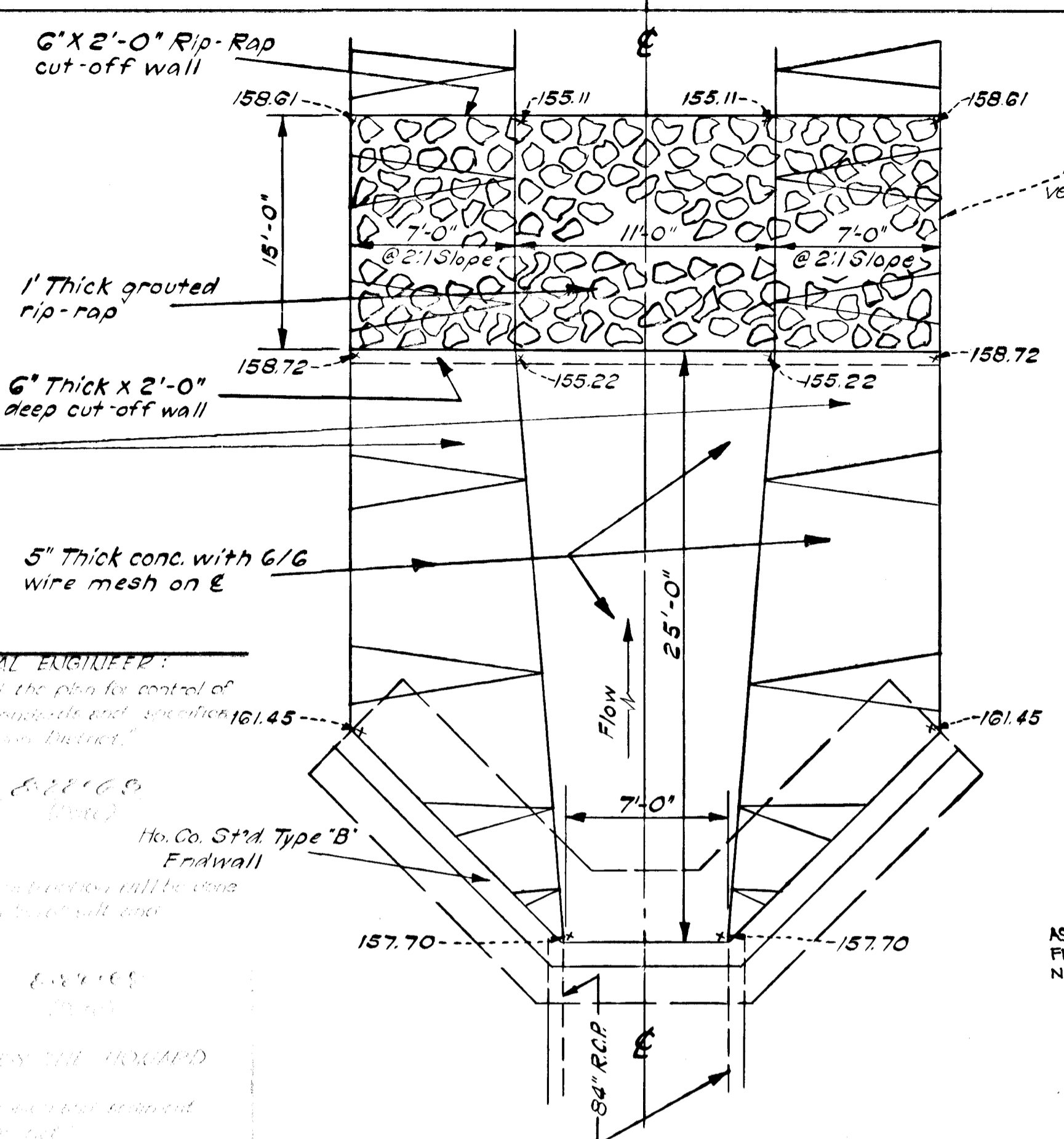
Approved: *Robert V. ...* 10-27-69

DATE	
BY	
NO.	
PLAN	
DATE	
BY	
NO.	
PROFILE	
DATE	
BY	
NO.	



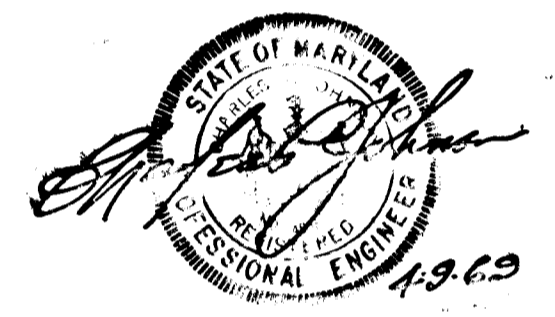
CONCRETE APRON ABOVE 84" RCP
SCALE: 1" = 5'-0"

CERTIFICATION BY THE PROFESSIONAL ENGINEER:
"I certify that the plan of development and the plan for control of silt and erosion were the work of the engineer and architect listed hereon of the Howard County Soil Conservation District."
(Signature)
Ho. Co. Std Type B Endwall
Reviewed *Edmund F. Jones* 10-27-69
Approved *Robert V. Young* 10-27-69



CONCRETE APRON BELOW 84" RCP
SCALE: 1" = 5'-0"

AS-BUILT SURVEY DATA BY
FERDINAND C. PROVINI MD. RES. P.E.
NO. 4451, SIGNED, SEALED & DATED 8/14/81



Rev Date: Rev No: Revision Description:

COLLECTION DISTRICT
HOWARD COUNTY
M A R Y L A N D

WORK AND DEVELOPER
HOWARD COUNTY SOIL CONSERVATION
4700 ANNAPOLIS ROAD, BLADENBURG, MARYLAND

PROJECT TITLE
MAINT. INDUSTRIAL PARK SECTION ONE

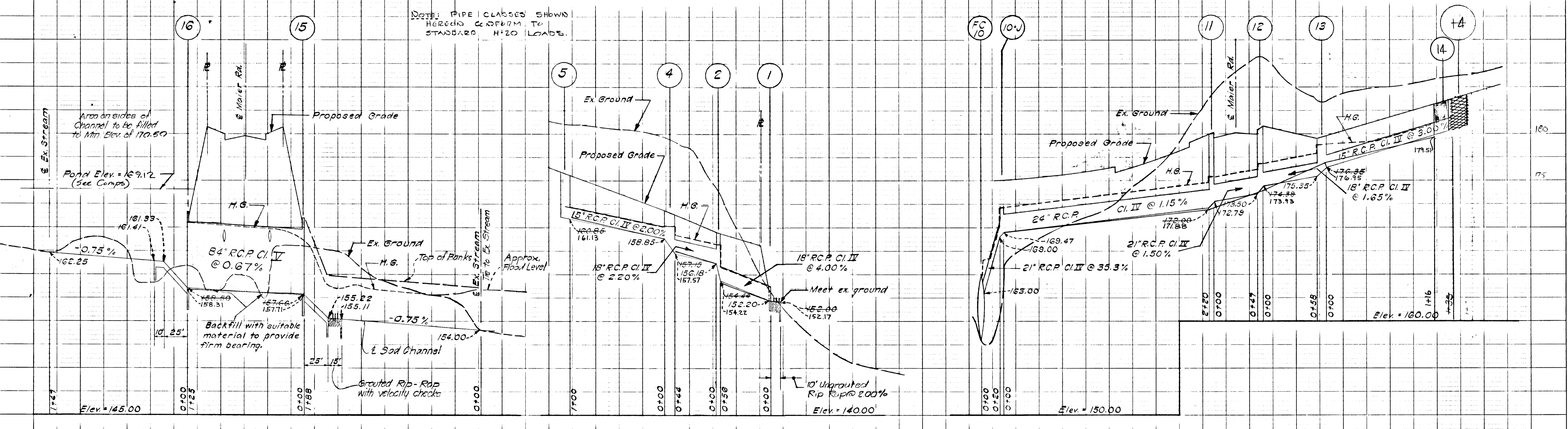
PROJECT FILE
STORM DRAIN PROFILES & DETAILS

Des By: *R.V.* Scale: *As Shown* Page No: **6 OF 8**
 Drawn By: *G. P.C.* Date: *May 15, 1969* C.C.E. No.
 Chk By: Approved:

GRUBBORNI AND O'MARA, INC.
ENGINEERS - ARCHITECTS - PLANNERS - SURVEYORS
6715 KIRKWOOD AVENUE RIVERDALE, MD.

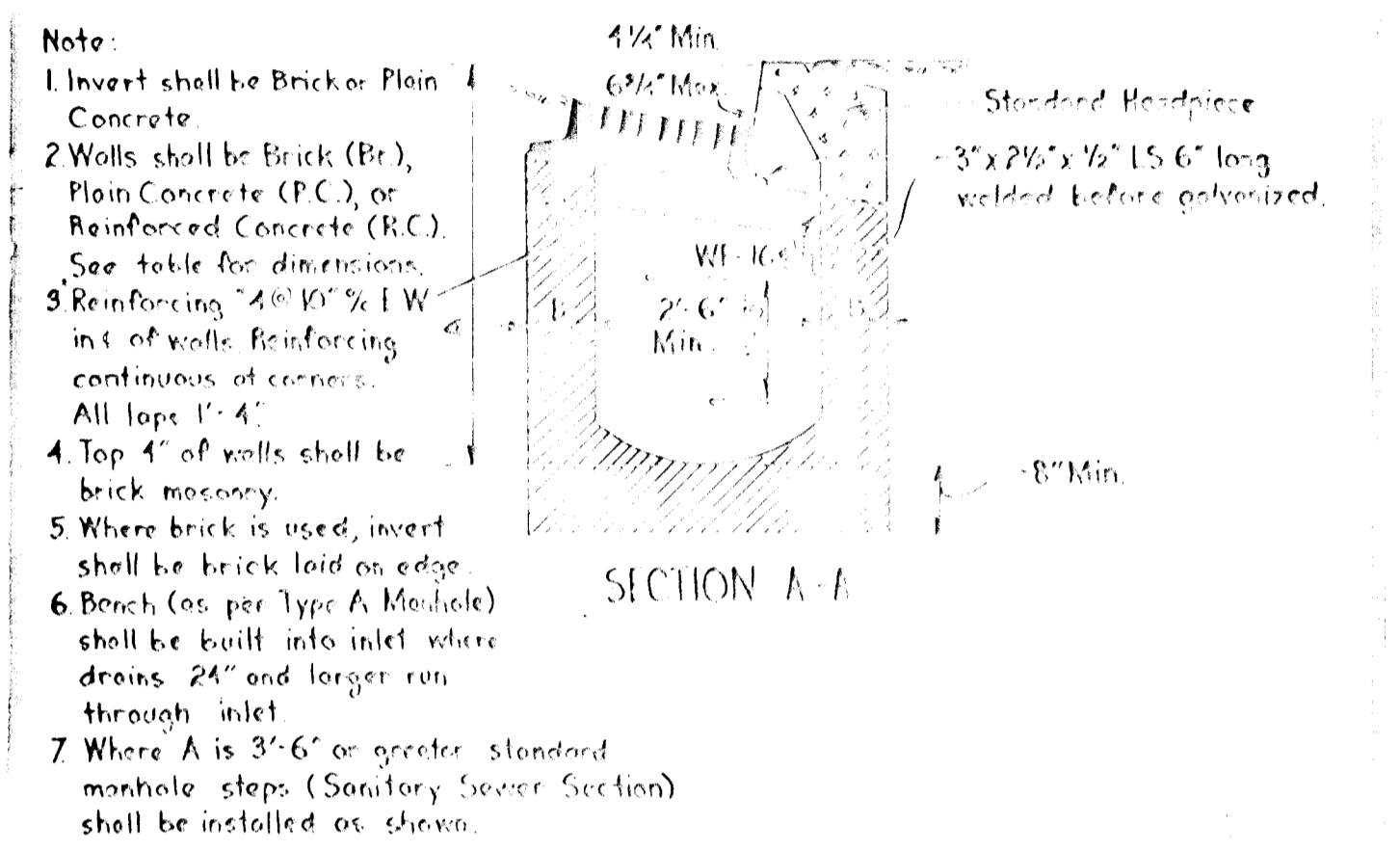
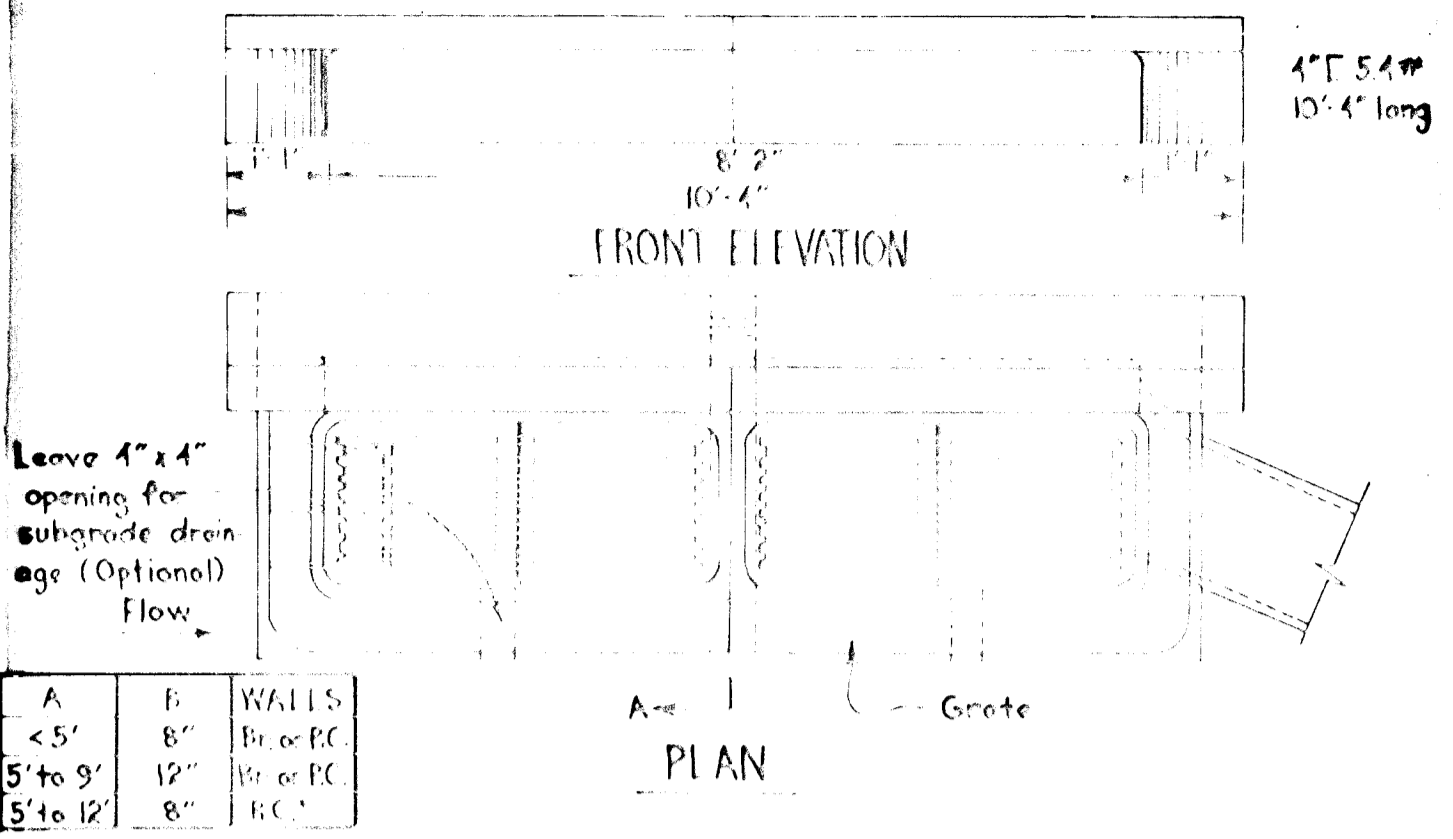
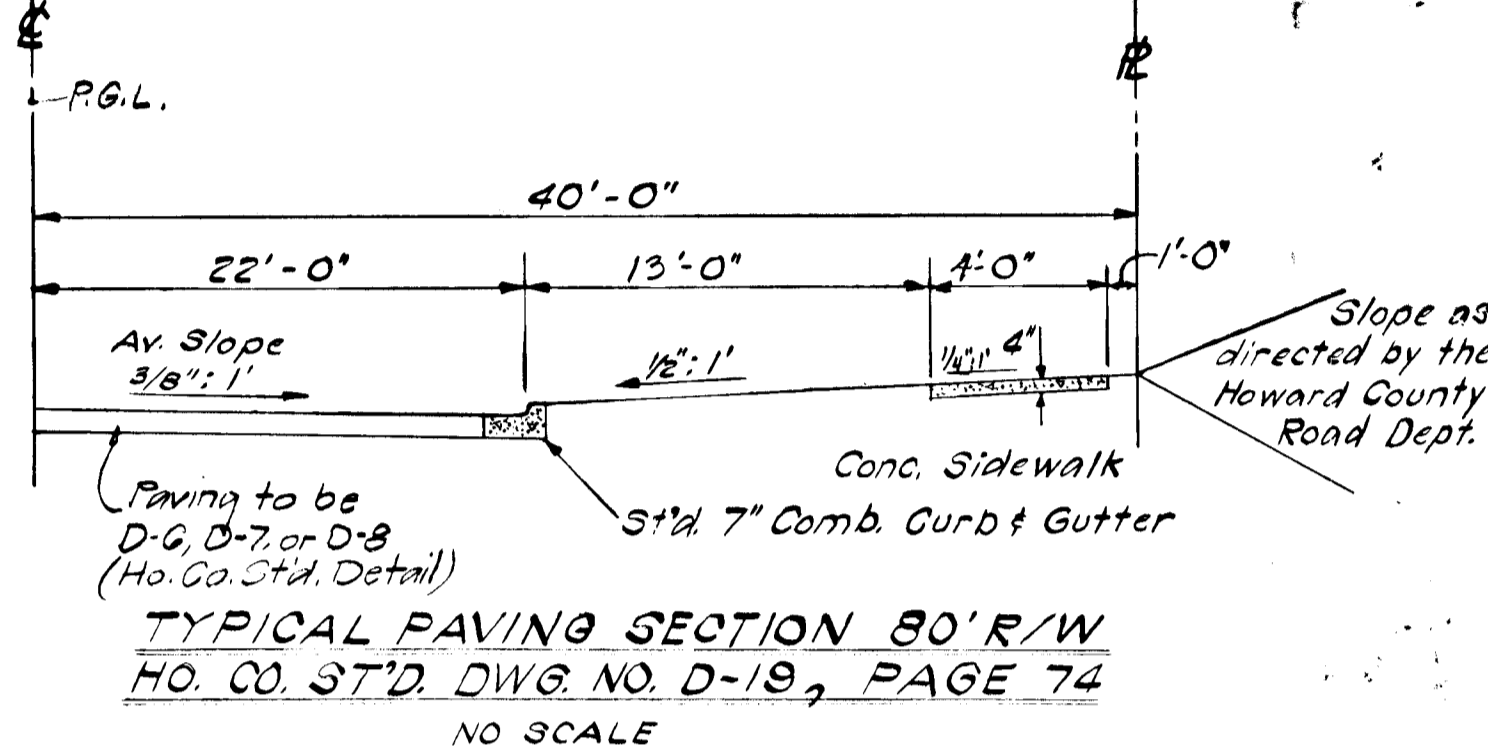
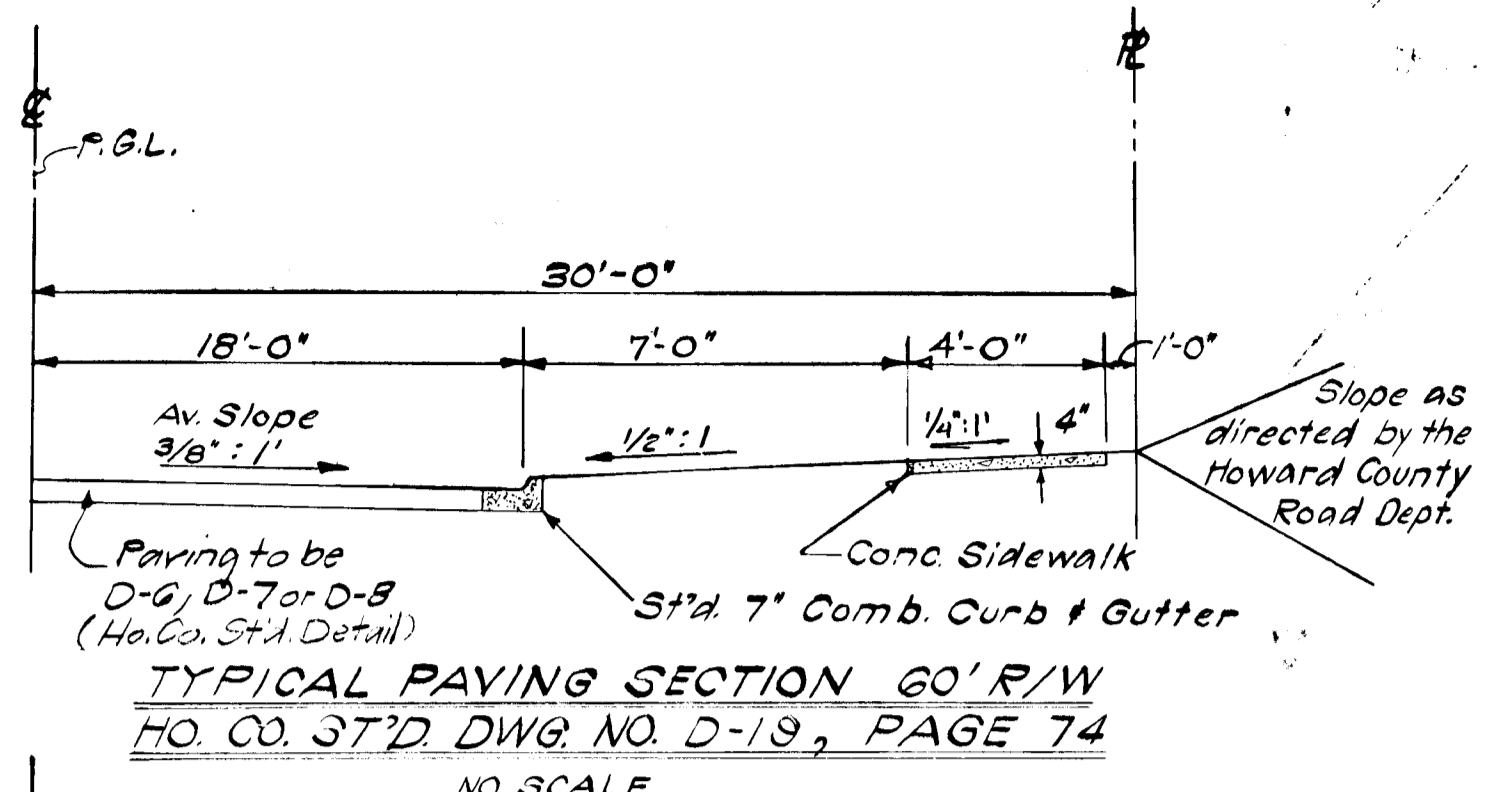
DEPARTMENT OF PUBLIC WORKS
Franklin M. Neblund 10-30-69
Chief, Bureau of Highways DATE:
OFFICE OF PLANNING AND ZONING
J.H. Clawson Jr. 10-29-69
Chief, Bureau of Planning and Zoning DIVISION OF LAND DEVELOPMENT DATA

DATE	
BY	
NO.	
PROFILE	
DATE	
BY	
NO.	



PROFILES
HOR. 1" = 50'
VERT. 1" = 5'

DATE	
BY	
REVISIONS	
NO.	
DESCRIPTION	
DATE	
BY	
REVISIONS	
NO.	
DESCRIPTION	
DATE	
BY	



SIZE	TYPE	LENGTH
15"	R.C.P. CI II	474'
18"	R.C.P. CI II	479'
21"	R.C.P. CI II	65'
24"	R.C.P. CI II	444'
84"	R.C.P. CI II	125'

NO.	TYPE	TOP ELEV.		REMARKS
		UPPER	LOWER	
1	Std Support wall	159.50	159.50	Ho. Co. Std. Page 101 Dwg. 46 Dia. 18"
2	Std. Manhole	159.40	159.32	" " " " 158 Dwg. 103
3	B-15 Inlet	163.92	163.72	" " " " 119-B Dwg. G4B W-2'-6"
4	Dble 'E' Comb Inlet	163.99	163.99	See detail sheet 7 of 7
5	Dble 'E' Comb Inlet	163.39	163.39	" " " " 7 of 7
6	Field Connection	174.63	174.63	15' X 84"
7	A-5 Inlet	174.63	174.63	Ho. Co. Std. Page 119 A Dwg. G4A W-2'-6"
8	Field Connection	174.63	174.63	15' X 84"
9	A-5 Inlet	174.63	174.63	Ho. Co. Std. Page 119 A Dwg. G4A W-2'-6"
10	Field Connection	174.98	174.98	21' X 84"
10-J	Junction Box	174.98	174.94	Ho. Co. Std. Page 103 Dwg. 108 W-2'-6"
11	B-15 Inlet	180.43	179.89	" " " " 119 B Dwg. G4B "
12	B-15 Inlet	180.85	180.22	" " " " 119 B Dwg. G4B "
13	Dble 'E' Comb Inlet	179.25	178.45	See detail sheet 7 of 7
14	B-15 Inlet	184.25	184.40	Ho. Co. Std. Page 119 B Dwg. G4B W-2'-6"
15	B' Endwall			" " " " 105 Dwg. 50 Dia. 84"
16	B' Endwall			" " " " 105 Dwg. 50 Dia. 84"
25	Modified E Endwall			119 B Dwg. G4B W-2'-6"
26	A-10 Inlet	161.24	161.24	" " " " 119 A Dwg. G4A W-2'-6"
27	B-15 Inlet	165.80	165.50	" " " " 119 B Dwg. G4B "
28	Dble 'E' Comb Inlet	162.74	164.30	See detail sheet 7 of 7
29	B-15 Inlet	178.53	178.13	Ho. Co. Std. Page 119 B Dwg. G4B W-2'-6"
30	Dble 'E' Comb Inlet	178.58	178.28	See detail sheet 7 of 7

AS-BUILT SURVEY DATA BY
FERDINAND C. PROVINI MD REG. P.E.
NO. 4851; SIGNED, SEALED & DATED 8/14/81

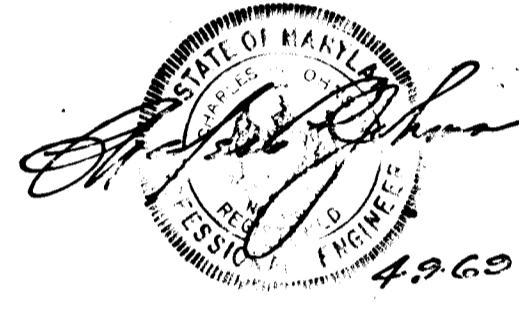
10-19-70 | 1 | Sidewalk width from 10'-0" to 4'-0" | M.S.

Rev. Date | Rev. No. | Revision Description

GREENHORN AND O'MARA, INC
ENGINEERS - ARCHITECTS - PLANNERS - SURVEYORS
6715 SENECAVILLE AVENUE | FIVE EDALL, MD.

DEPARTMENT OF PUBLIC WORKS
Francis W. Wickland
CHIEF, BUREAU OF HIGHWAYS

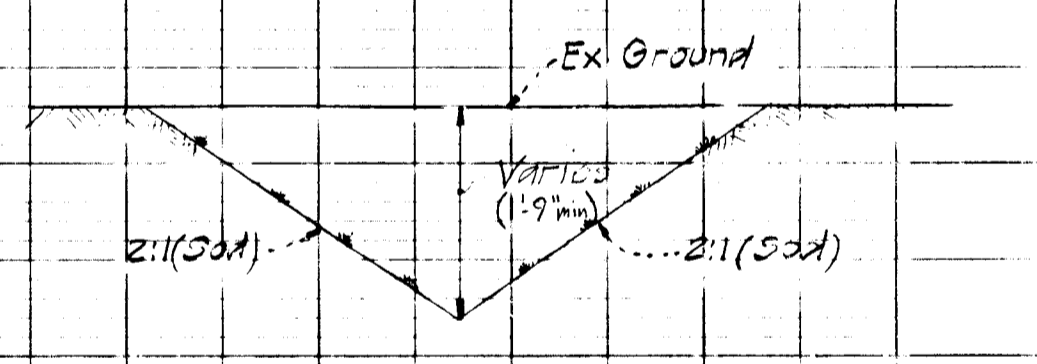
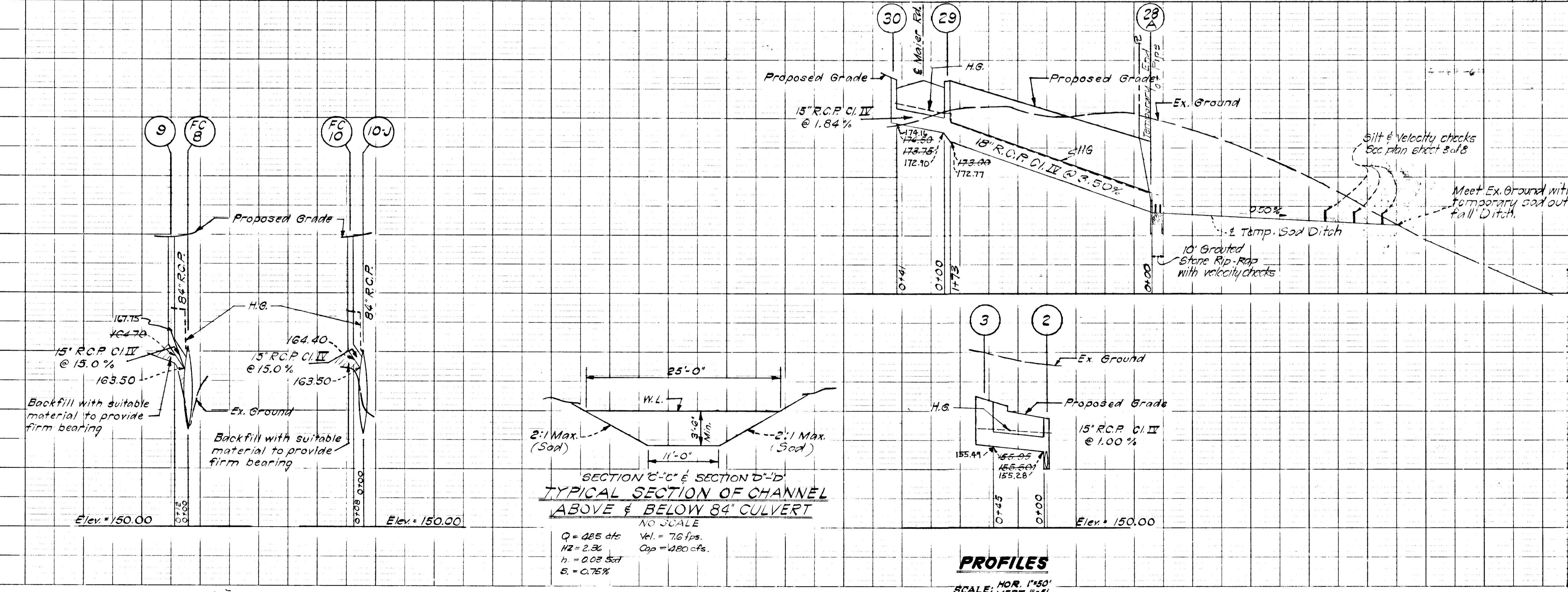
OFFICE OF PLANNING AND ZONING
J. H. Clawson
CHIEF ENGINEER, DIVISION OF LAND DEVELOPMENT



Note: All construction on this project to be in accordance with the Howard County Construction Code & Standard Specifications.

DOUBLE TYPE "I" COMB INLET

DATE	
BY	
REVISIONS	
NO.	
DESCRIPTION	
DATE	
BY	
REVISIONS	
NO.	
DESCRIPTION	
DATE	
BY	



CERTIFICATION BY THE PROFESSIONAL ENGINEER:
I certify that the plan of development was the basis for control of silt and erosion meets the requirements of the specifications of the Howard County Soil Conservation District.

(SEAL) Ferdinand C. Provini
Ferdinand C. Provini (Date)

CERTIFICATION BY THE DEVELOPER:
I certify that all development and/or construction will be done according to the plan of development and silt and erosion control measures required.

Richard D. Young
Richard D. Young (Date)

SIGNATURE BLOCK FOR APPROVAL BY THE HOWARD COUNTY COMMISSION ON DISTRICTS:
This development plan of development and/or construction and silt and erosion control measures is approved by the Howard County Soil Conservation District.

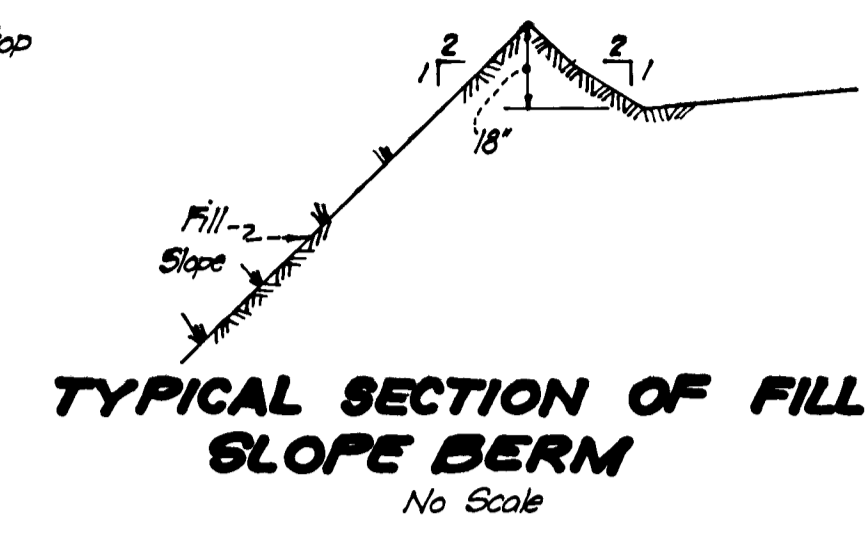
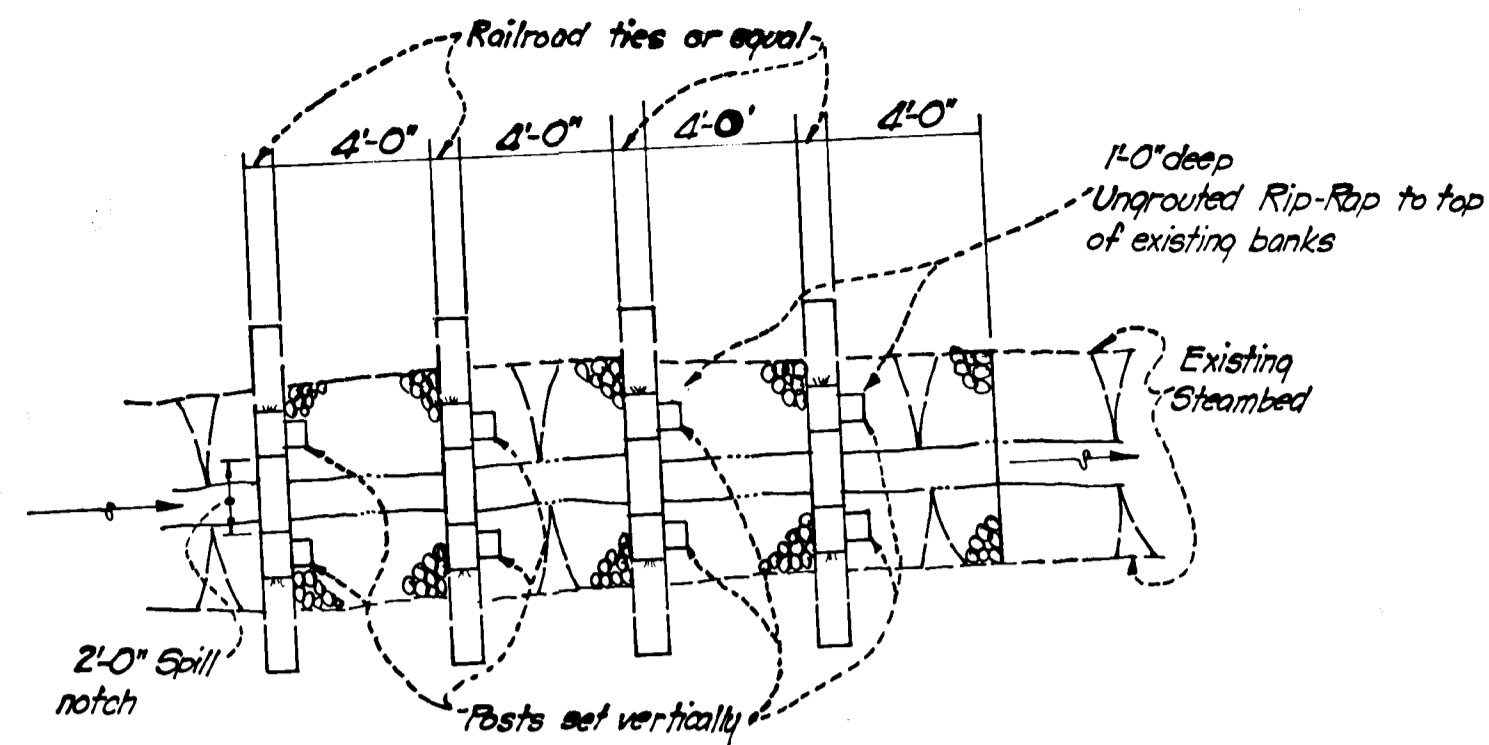
Reviewed: Edward J. Shand 10-27-69
Dist. Commissioner (Date)

Approved: Richard D. Young 10-27-69
Howard S.C.D. (Date)

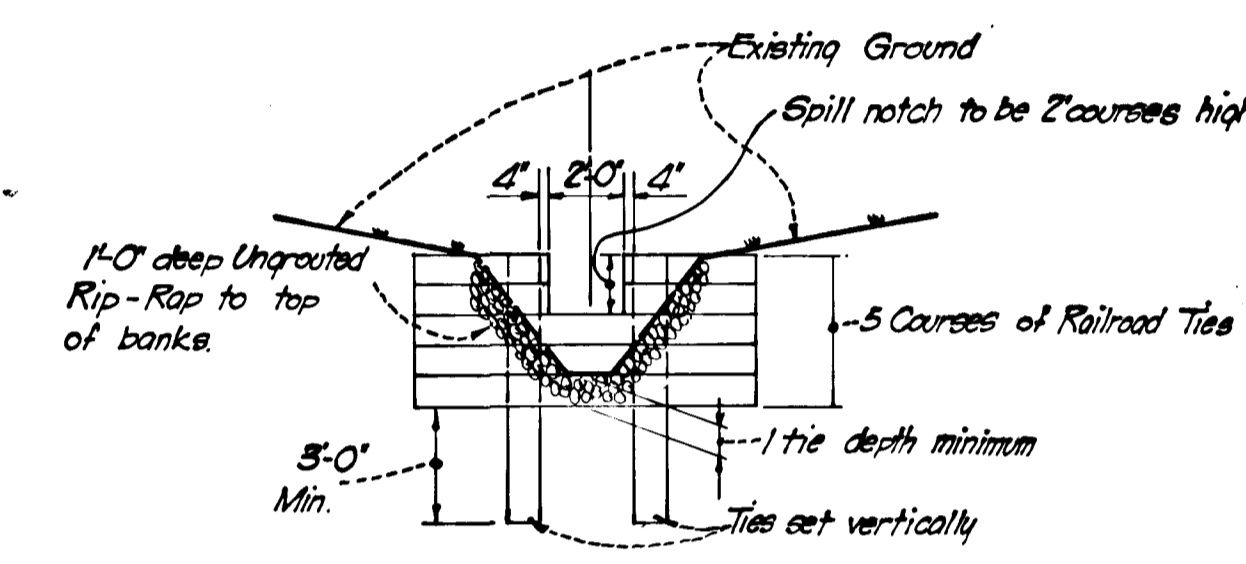
AS-BUILT JAN. 18, 1983

GENERAL NOTES

- All areas disturbed by construction shall be seeded & mulched as soon after completion as is practical. Seed to be used in this application should be Kentucky 31 tall fescue or redfoot @ 0.69 lbs./1000 S.F. or 0.11 lbs./1000 S.F. respectively. Site areas and other disturbed areas shall be treated for seeding in the following manner:
 - 40 lbs./1000 S.F. pulverized dolomitic limestone.
 - 11.5 lbs./1000 S.F. to 23 lbs./1000 S.F. of 0-20-0 superphosphate.
 - 11.5 lbs./1000 S.F. of 10-10-10 fertilizer. (all stated above or equals)
 Mulch to be anchored in any of the following methods:
 - With mulch anchoring tool to punch & anchor mulch material into soil.
 - Asphalt spray
 - Liquid Asphalt
 - Emulsified Asphalt
 - Mulch netting pegged in place.
- Silt traps to be cleaned periodically as needed by owner.
- Top of all fill slopes on this site to be bermed during the construction to prevent excessive erosion of these fill slopes. These Berms should have an outlet onto undisturbed ground. If this is not possible then temporary drop structures (flumes or chutes) should be designed to carry runoff to undisturbed ground. Berm shall be 18" high with 2:1 side slopes (See plan for locations) (See Right for detail)
- For details of timber barricades see drawing D-109, Page 164 of the Howard County Road Bldg. Code.



PLAN OF VELOCITY CHECK & SILT TRAP
Scale: 1"=5'-0"



SECTION OF VELOCITY CHECK & SILT TRAP
Scale: 1"=5'-0"

NOTES:

- Ties to be fastened together with 12" boat spikes
- Trap areas to be cleaned when silt builds up to lip of spill notch.

CERTIFICATION BY THE PROFESSIONAL ENGINEER:
"I certify that the plan of development and the plan for control of silt and erosion meets the requirements, standards and specifications of the Howard County Soil Conservation District."
(SEAL) *[Signature]* 10-29-69
(Signature) (Date)

CERTIFICATION BY THE DEVELOPER:
"I certify that all development and/or construction will be done according to this plan of development and plan of silt and sediment control."
[Signature] 10-29-69
(Signature) (Date)

SIGNATURE BLOCK FOR APPROVAL BY THE HOWARD SOIL CONSERVATION DISTRICT:
"This development plan is approved for soil erosion and sediment control by the Howard Soil Conservation District."
Reviewed *[Signature]* 10-27-69
Dist. Conservationist (Date)
Approved *[Signature]* 10-27-69
Howard S.C.D. (Date)

ENGINEER'S SEAL

Date	Rev No	Revision Description
6TH ELECTION DISTRICT HOWARD COUNTY M A R Y L A N D		
OWNER AND DEVELOPER HOWARD COUNTY JOINT VENTURE 4700 ANNAPOLIS ROAD, BLADENSBURG, MARYLAND.		
PROJECT AREA MAIER INDUSTRIAL PARK SECTION ONE		
PROJECT TITLE STORM DRAIN PROFILES & DETAILS		
Des By <i>M.L.S.</i>	Scale AS SHOWN	Draw No 8 of 8
Drn By <i>G.W.C.</i>	Date JULY 1969	C.C.I. No
Chk By	Approved	

GREENHORNE AND O'MARA, INC.
ENGINEERS - ARCHITECTS - PLANNERS - SURVEYORS
6715 KENILWORTH AVENUE RIVERDALE, MD.

DEPARTMENT OF PUBLIC WORKS
[Signature] 10-30-69
CHIEF, BUREAU OF HIGHWAYS. DATE:

OFFICE OF PLANNING AND ZONING
[Signature] 10-29-69
CHIEF ENGINEER, DIVISION OF LAND DEVELOPMENT, DATE:

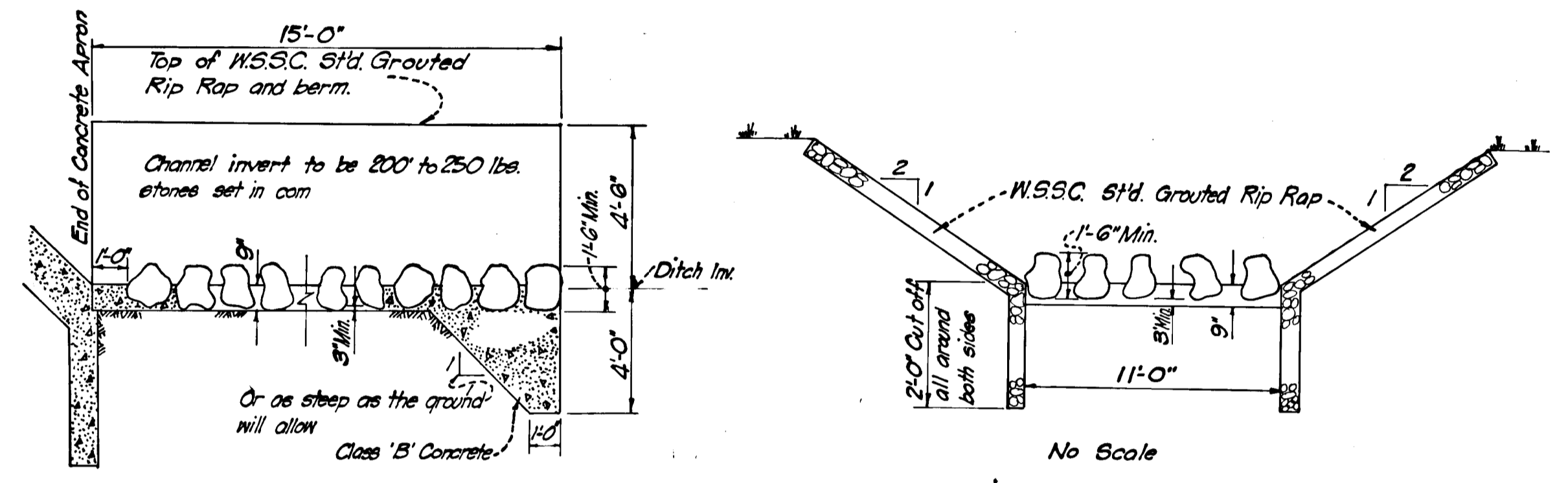
LEGEND

EX. GROUND @ P.G.L. _____

EX. GROUND @ 50' OFF RT. RW _____

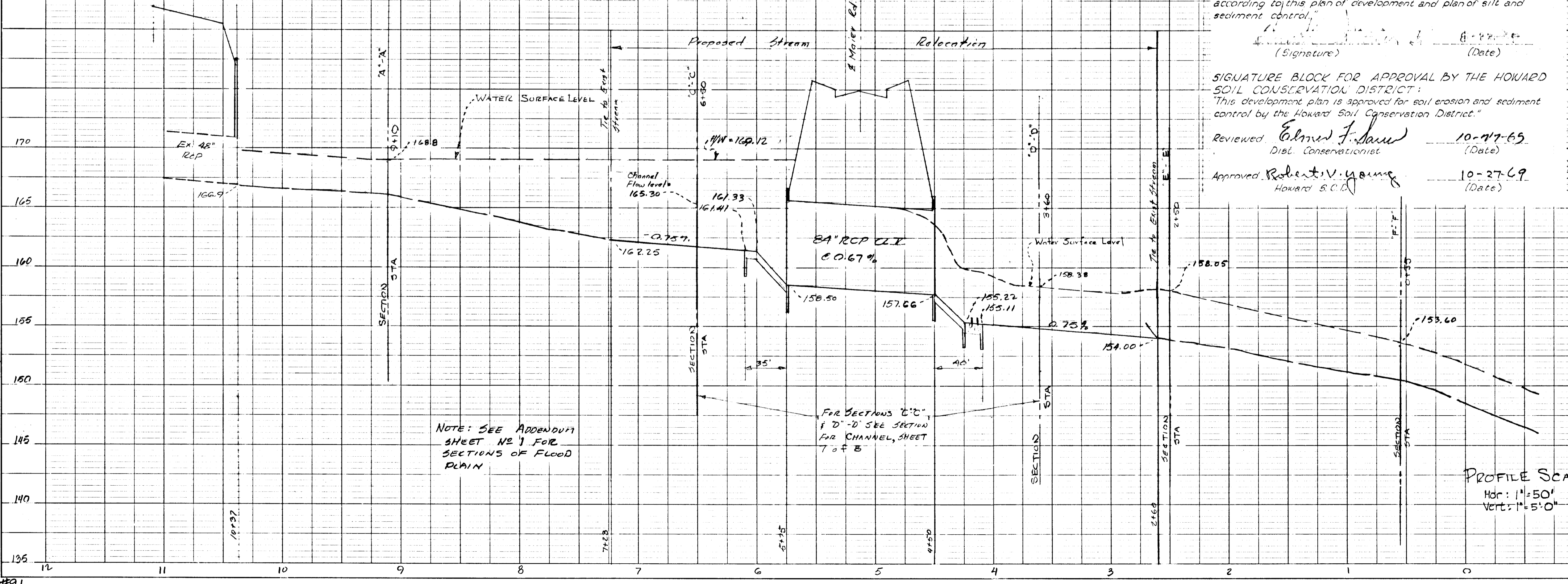
EX. GROUND @ 50' OFF LT. RW _____

FINISHED GRADE @ P.G.L. _____



DETAILS OF RIP-RAP VELOCITY CHECKS
No Scale

PROFILE OF 50 YEAR FLOOD PLAIN IN STREAM



PROFILE SCALE
Hdz: 1"=50'
Vert: 1"=5'-0"

MAIER INDUSTRIAL PARK