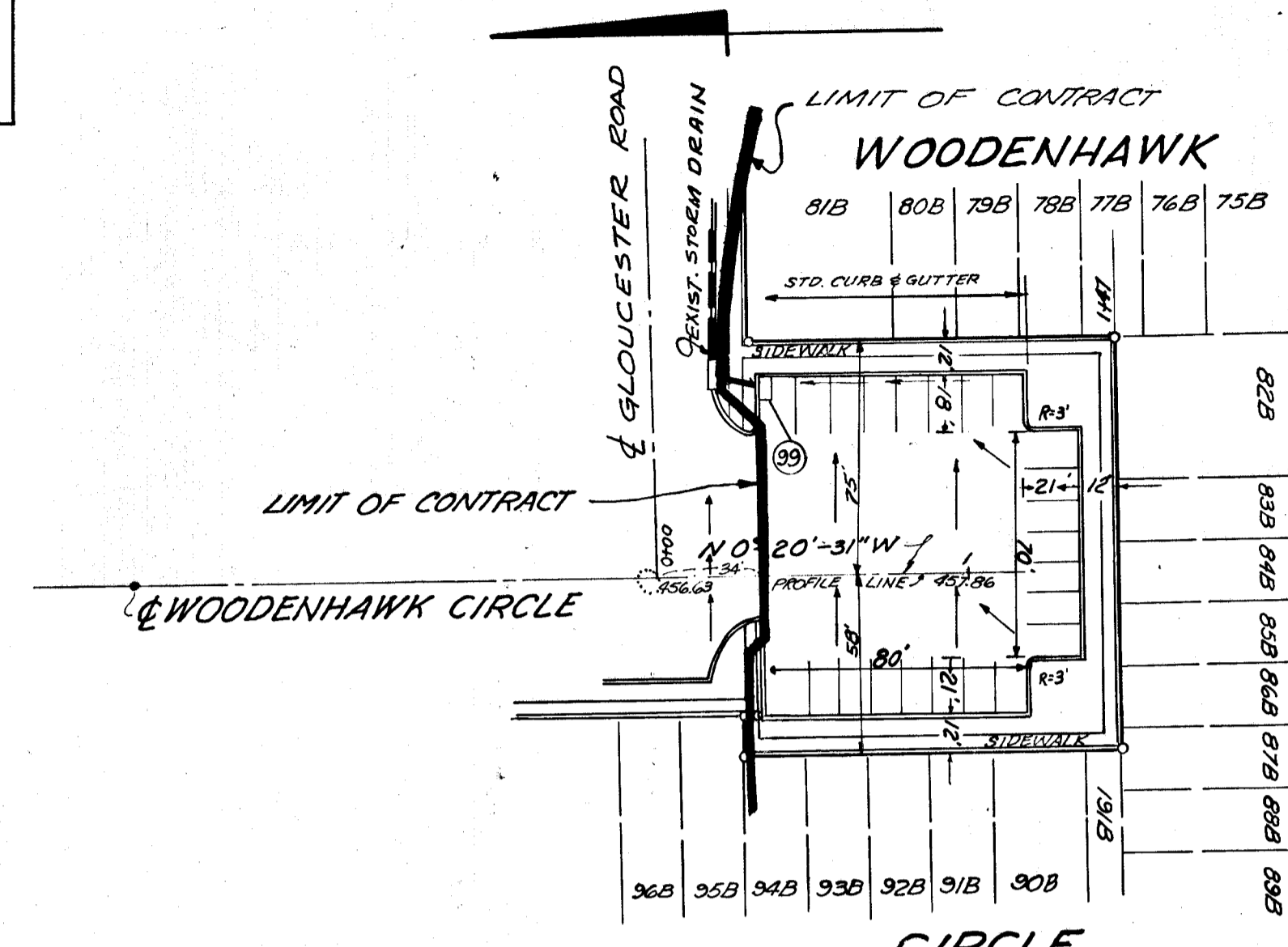
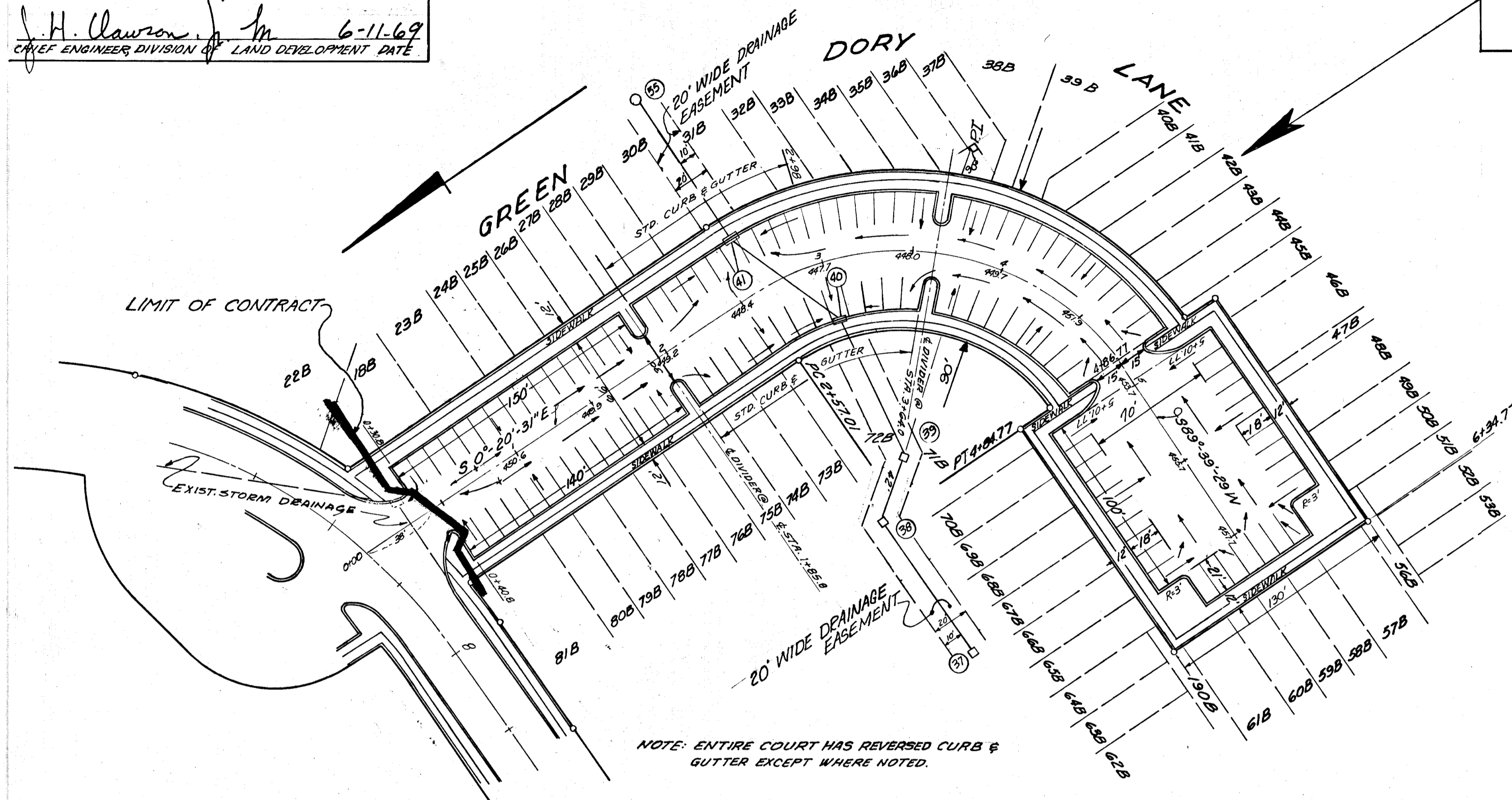


DEPARTMENT OF PUBLIC WORKS  
*Francis W. McLeod* 5-19-69  
 CHIEF BUREAU OF HIGHWAYS DATE  
 OFFICE OF PLANNING & ZONING  
*J. H. Clawson* 6-11-69  
 CHIEF ENGINEER DIVISION OF LAND DEVELOPMENT DATE

**Q CURVE DATA**  
 STATION = 2+55.95 TO 4+34.22  
 $\Delta = 90^\circ$   
 $R = 145'$   
 $L = 227.77'$   
 $T = 145'$



**NOTE:**  
 ALL CONSTRUCTION WILL BE IN CONFORMANCE WITH HOWARD COUNTY ROAD SPECIFICATIONS. MINIMUM BUILDING SETBACK RESTRICTION FROM PROPERTY LINE RIGHT OF WAY OF ANY PUBLIC ROAD OR STREET IS TO BE IN ACCORDANCE WITH THE RECORDED FINAL DEVELOPMENT PLAN CRITERIA. ALL CORNER RADII TO BE 25' TO FACE OF CURB UNLESS OTHERWISE NOTED (SEE DETAIL SHEET)

SEE ROAD CROSS SECTIONS ON DETAIL SHEET  
**ROAD CONSTRUCTION PLANS**  
**STRATHMORE AT COLUMBIA**  
**PART II**  
**VILLAGE OF HARPER'S CHOICE**  
 SECTION 3, AREA 2, RESUB LOT 13 PART 2  
 OWNER: DEVELOPER  
 THE HOMER DEVELOPMENT CORP.  
 710 SMITH, SOMMERVILLE & CASE, 1700 ONE CHARLES CENTER  
 BALTIMORE, MARYLAND  
 5<sup>TH</sup> ELECTION DISTRICT HOWARD COUNTY, MD.

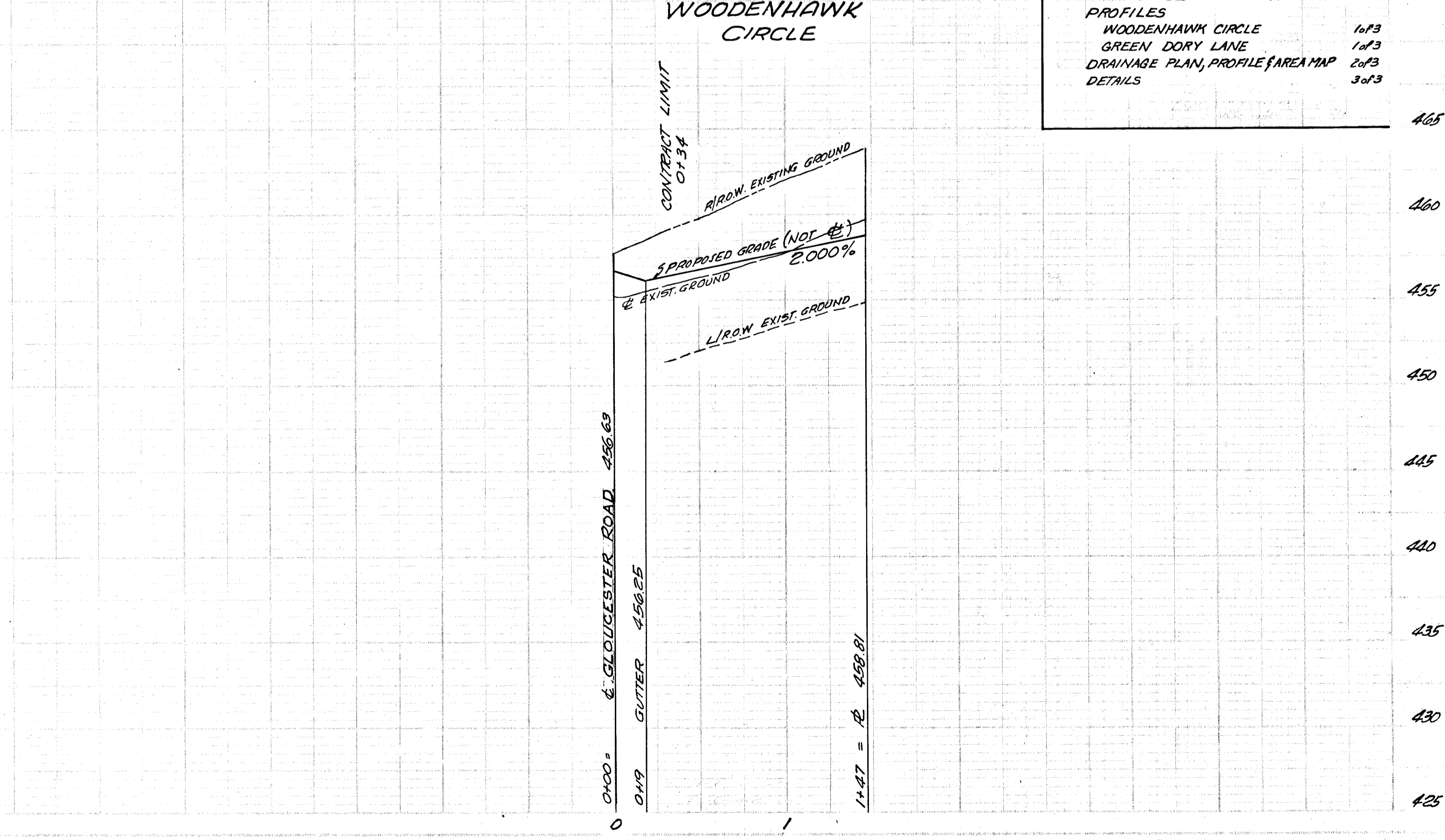
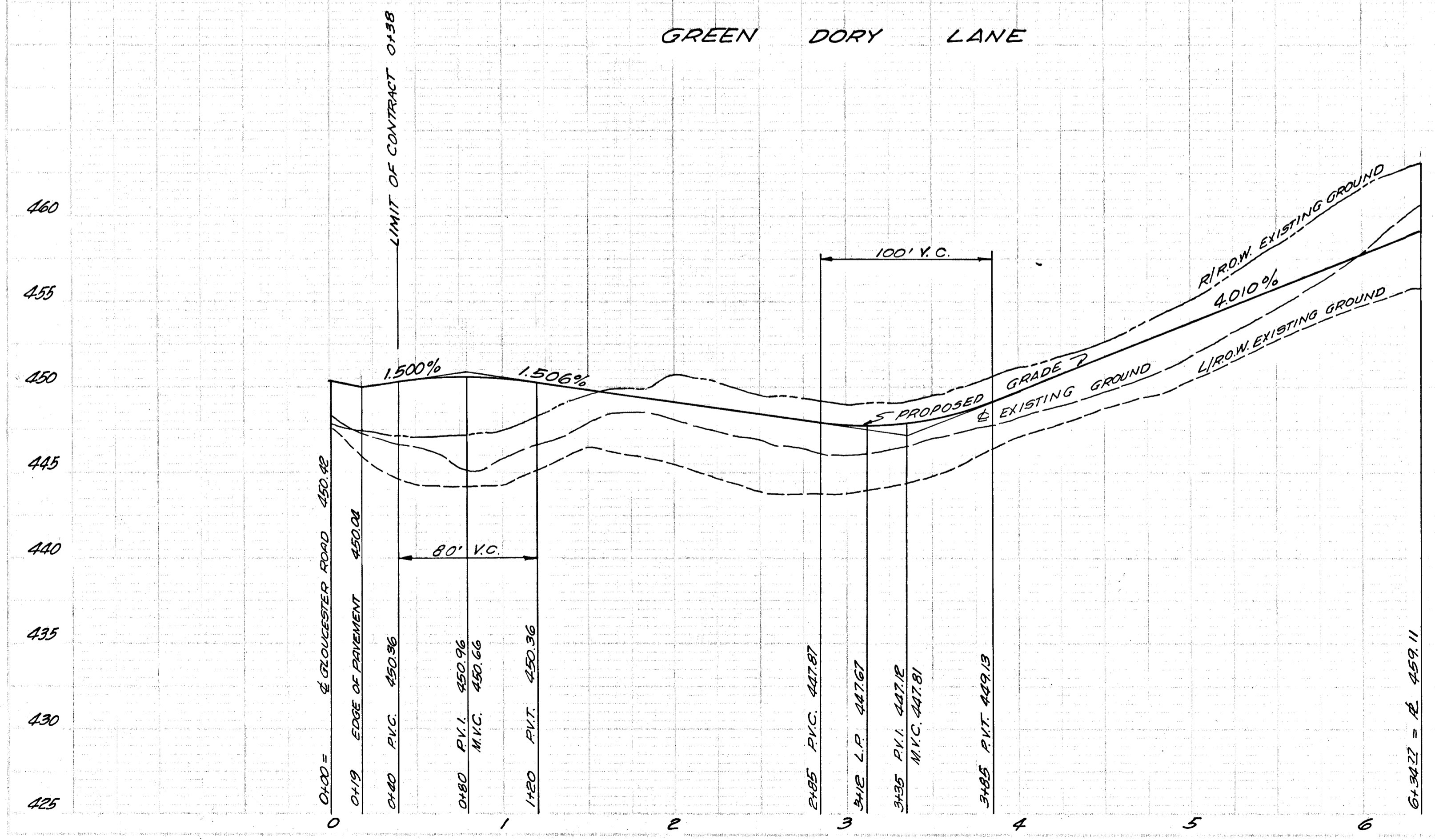
PREPARED BY  
 ENGINEERING DEPARTMENT, LEVITT & SONS, INCORPORATED,  
 SOUTHERN ZONE 7411 RIGGS ROAD HYATTSVILLE, MD.

*F. H. Meredith* PE MD 6802  
 F. H. MEREDITH CHIEF ENGINEER  
 DATE: Feb 27, 1969

SCALE: 1" = 50' HORIZ. 3" VERT. DRAWING No. 43-12/3-5

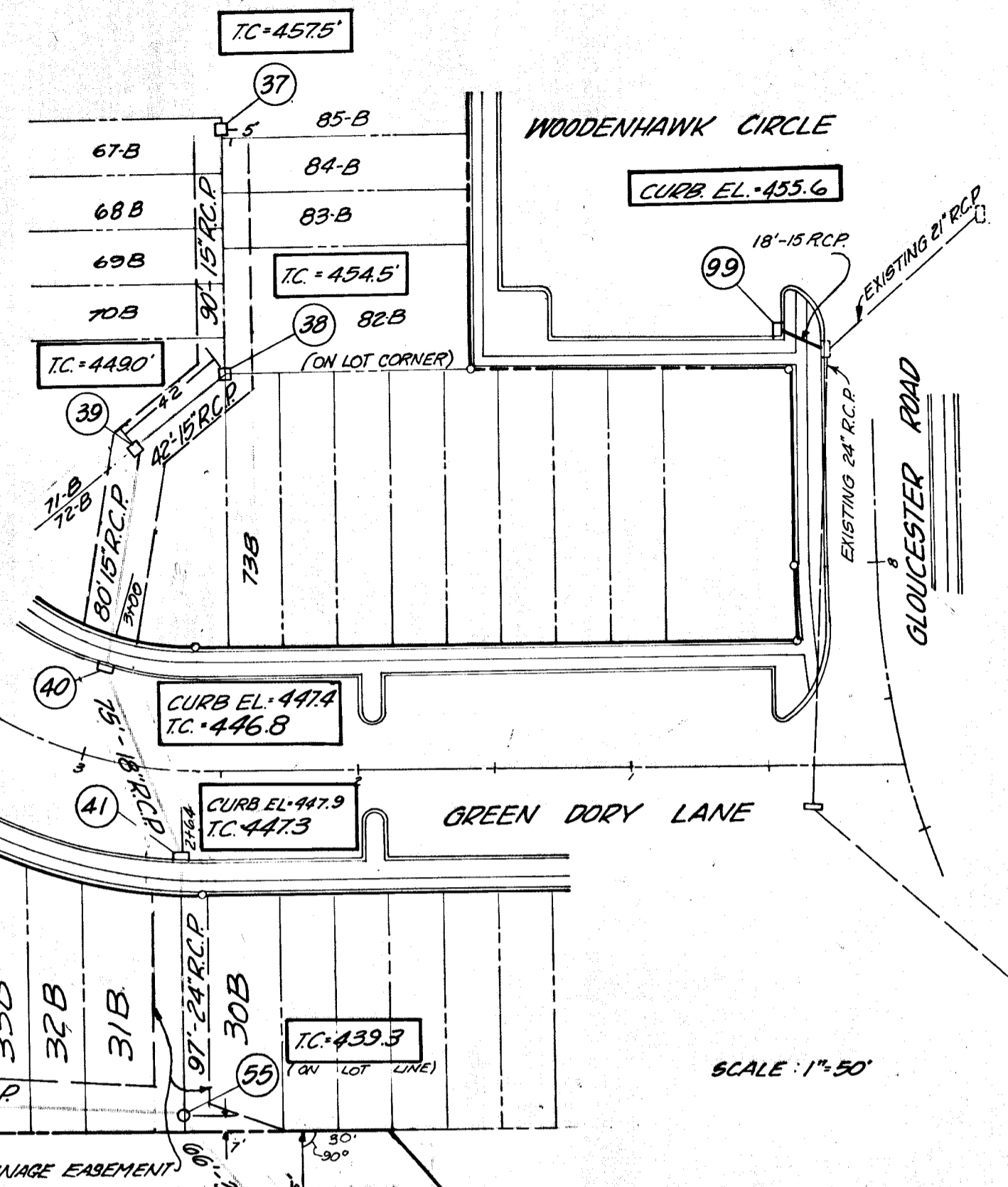
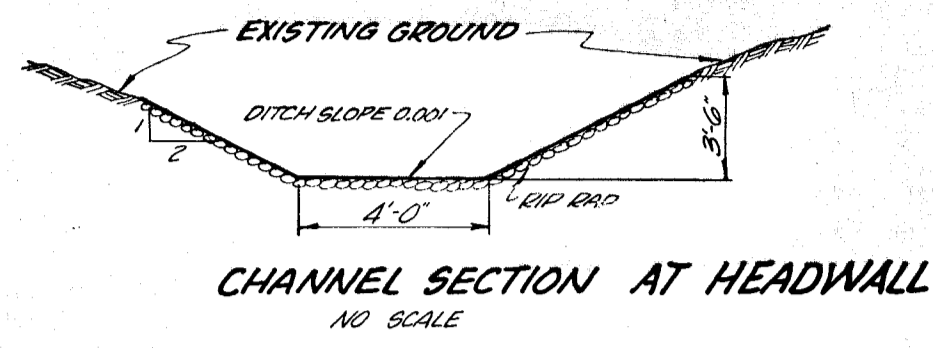
**SHEET INDEX**

|                                   |        |
|-----------------------------------|--------|
| PROFILES                          |        |
| WOODENHAWK CIRCLE                 | 1 of 3 |
| GREEN DORY LANE                   | 1 of 3 |
| DRAINAGE PLAN, PROFILE & AREA MAP | 2 of 3 |
| DETAILS                           | 3 of 3 |



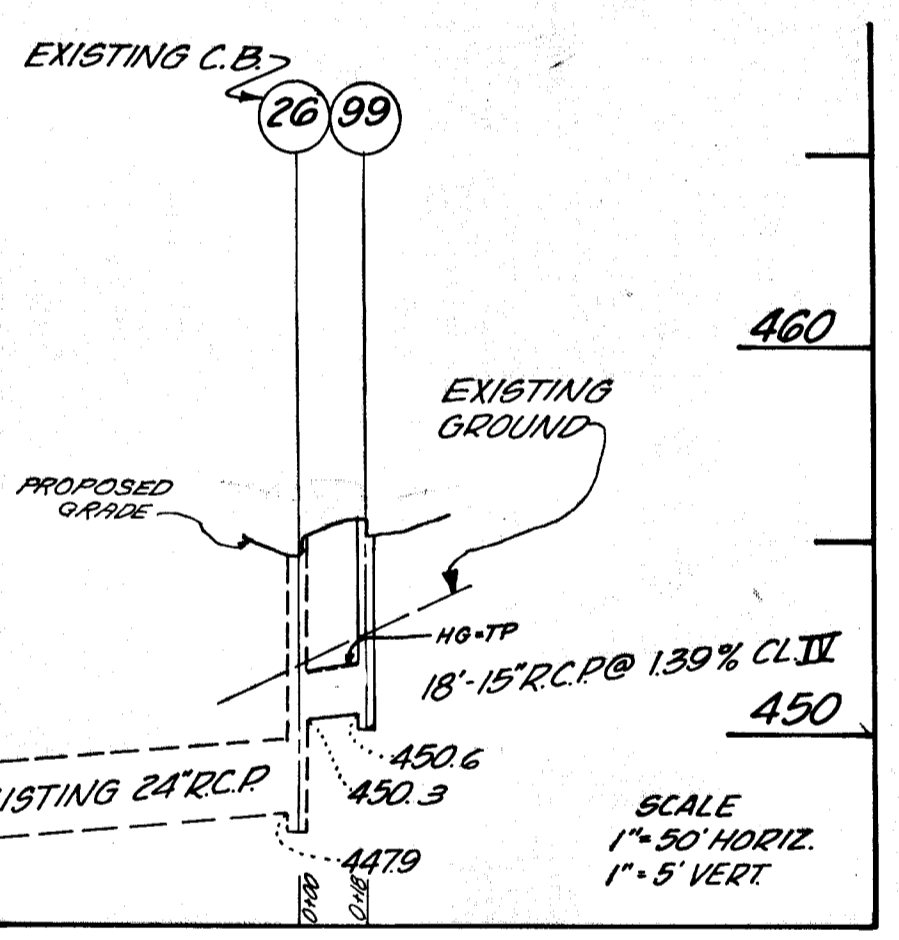
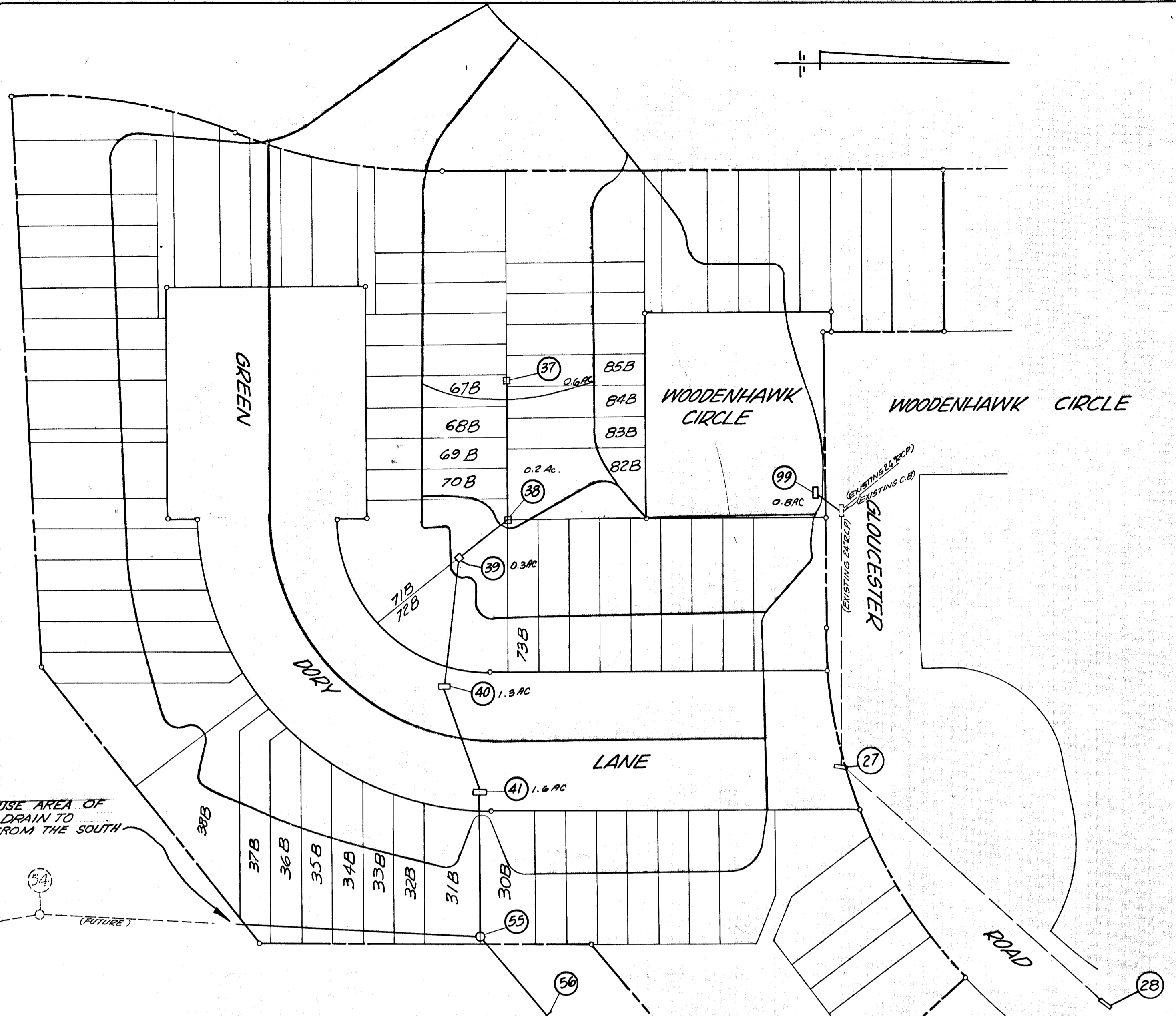
*Dura* *alac*



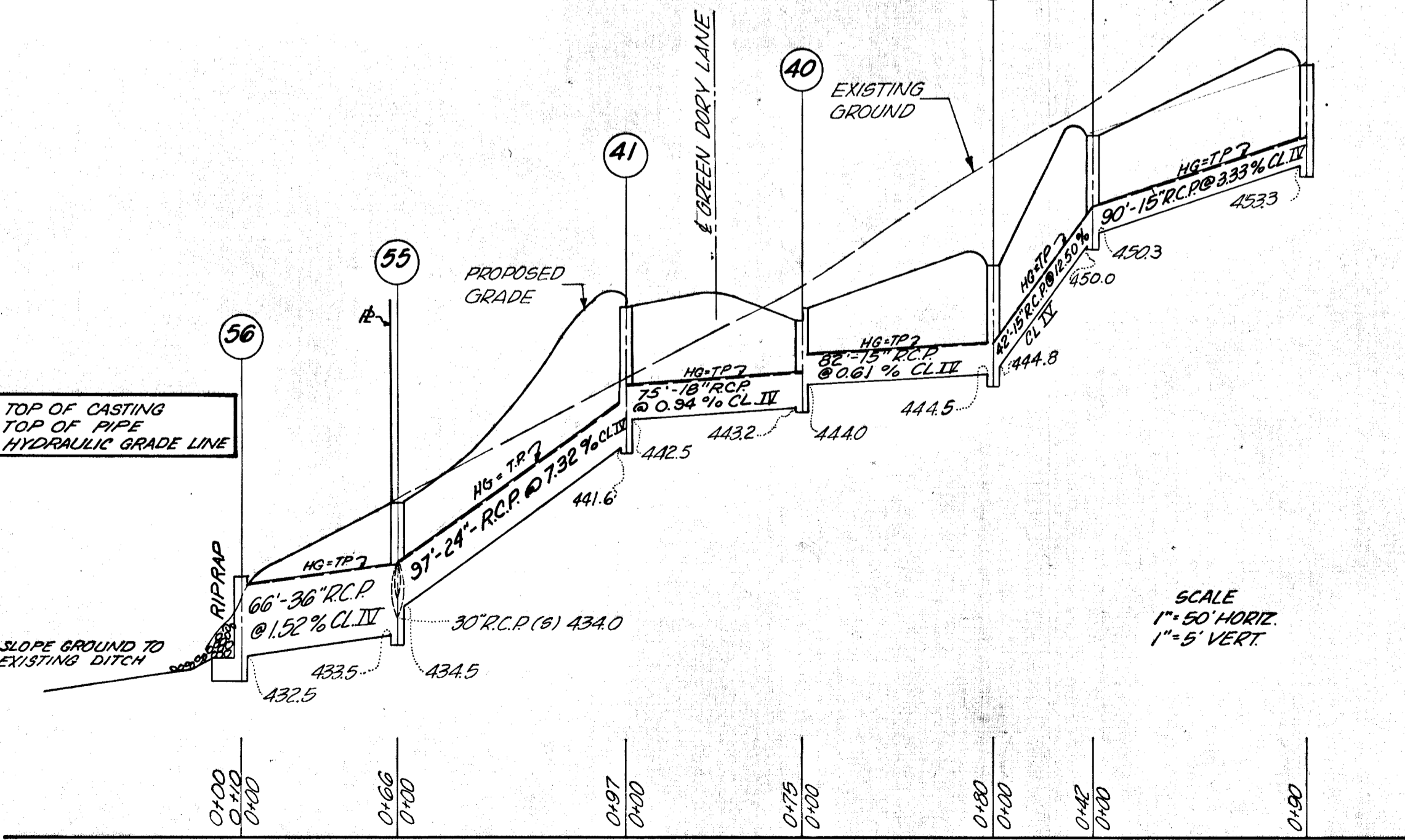


SCALE: 1"=50'

FUTURE TOWNHOUSE AREA OF 8.8 ACRES WILL DRAIN TO STRUCTURE 55 FROM THE SOUTH



SCALE 1"=50' HORIZ. 1"=5' VERT.



SCALE 1"=50' HORIZ. 1"=5' VERT.

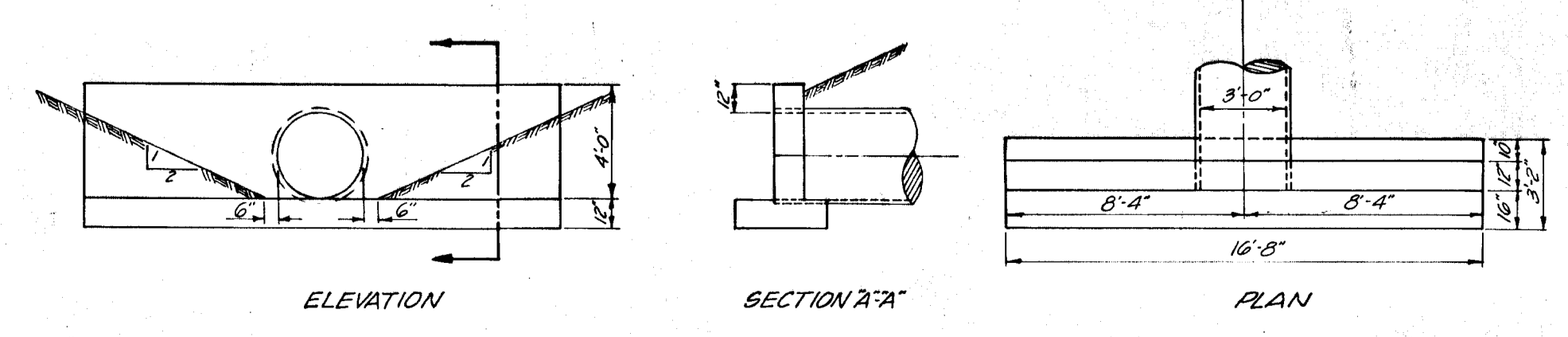
"STORM DRAIN DESIGN DATA"

DRAINAGE AREA MAP SCALE: 1"=50'

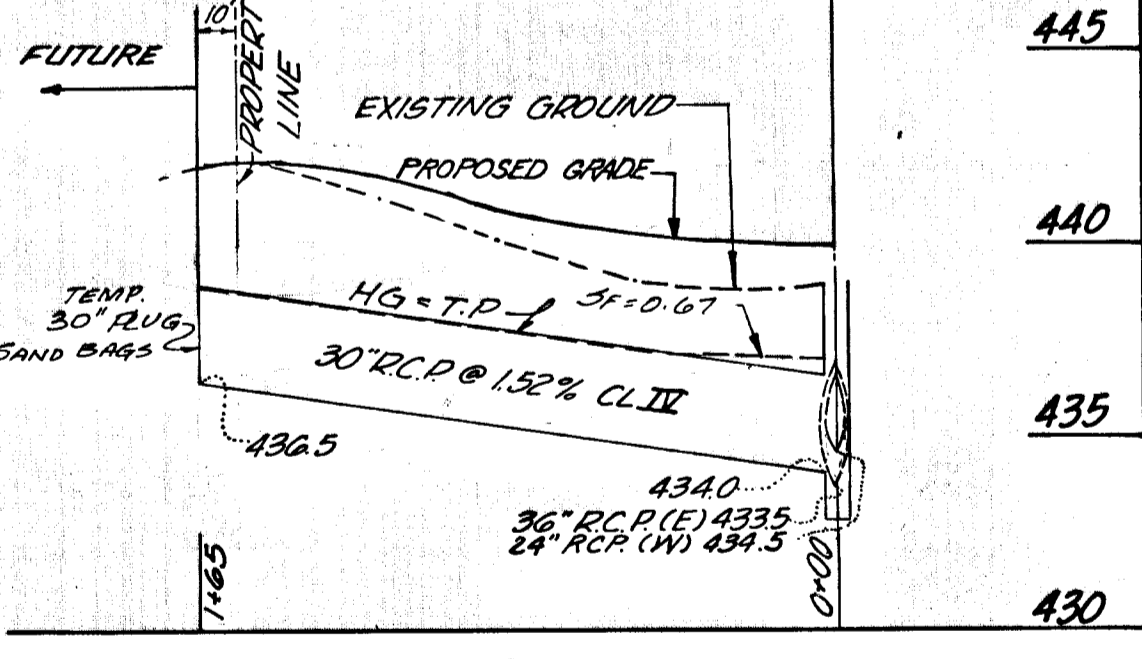
| LOCATION | ACRES     | COEF. | TIME CONCERN | MIN.         | INTEN.     | Q-CIA | PIPE   | N = 0.013 |            |        |         | STD. DETAIL |                             |                  |         |     |
|----------|-----------|-------|--------------|--------------|------------|-------|--------|-----------|------------|--------|---------|-------------|-----------------------------|------------------|---------|-----|
|          |           |       |              |              |            |       |        | SIZE      | VELOCITY   | LENGTH | REMARKS |             |                             |                  |         |     |
| FROM TO  | SUB TOTAL | "C"   | INLET        | TIME IN PIPE | TOTAL TIME | "I"   | C.F.S. | DIAMETER  | PIPE SLOPE | VEL.   | LENGTH  | REMARKS     | INLET TYPE                  | DWG.             | PG. No. |     |
| 37 38    | 0.6       | 60    | 7.0          | 0.8          | 7.0        | 6.41  | 2.3    | 15"       | 0.17       | 3.33%  | 1.9     | 90'         | "C"                         | 64-C             | 119-C   |     |
| 38 39    | 0.2       | 60    | 5.0          | 0.3          | 7.8        | 6.25  | 3.0    | 15"       | 0.29       | 12.50% | 2.4     | 42'         | "C"                         | 64-C             | 119-C   |     |
| 39 40    | 0.3       | 60    | 7.0          | 0.4          | 8.1        | 6.20  | 4.1    | 15"       | 0.53       | 0.61%  | 3.3     | 82'         | "C"                         | 64-C             | 119-C   |     |
| 40 41    | 1.3       | 60    | 7.0          | 0.2          | 8.5        | 6.12  | 8.8    | 18"       | 0.94       | 0.94%  | 5.0     | 75'         | DBL'S                       | D-99             | 154     |     |
| 41 55    | 1.6       | 70    | 7.0          | 0.4          | 8.7        | 6.08  | 15.6   | 24"       | 0.63       | 7.32%  | 5.0     | 97'         | DBL'S                       | D-99             | 154     |     |
| 55 56    | 8.8       | 60    | 7.0          | 0.4          | 7.0        | 6.41  | 33.8   | 30"       | 0.91       | 1.52%  | 6.9     | 116'        | 30" FLUG SAND BAG           |                  |         |     |
| 55 56    | -         | -     | -            | -            | 9.1        | 6.02  | 47.2   | 36"       | 0.67       | 1.52%  | 6.7     | 66'         | "MH"                        | D-103            | 158     |     |
| 56       | -         | -     | -            | -            | -          | -     | -      | -         | -          | -      | -       | -           | PIPE DETAILS SEE THIS SHEET | TYPE "C" ENDWALL | D-52    | 107 |
| 99 26    | 0.8       | 70    | 5.0          | 0.1          | 5.0        | 6.83  | 3.8    | 15"       | 0.47       | 1.39%  | 3.1     | 18'         | "H"                         | D-76             | 131     |     |

NOTE: For details not shown see Howard County Road Construction Code and Standard Specifications for Road and Bridges, Nov. 27, 1962 with all subsequent revisions, Div. No. D-52, Page 107.

STANDARD TYPE "C" ENDWALL SCALE: 3/16"=1'-0"



NOTE: ALL DRAWING NUMBERS REFER TO HOWARD COUNTY ROAD CONSTRUCTION CODE AND STANDARD SPECIFICATION DATED NOV 27, 1962 WITH ALL SUBSEQUENT REVISION. SEE SHEET 1 OF 3 FOR STREET DIMENSIONS.



SCALE 1"=50' HORIZ. 1"=5' VERT.

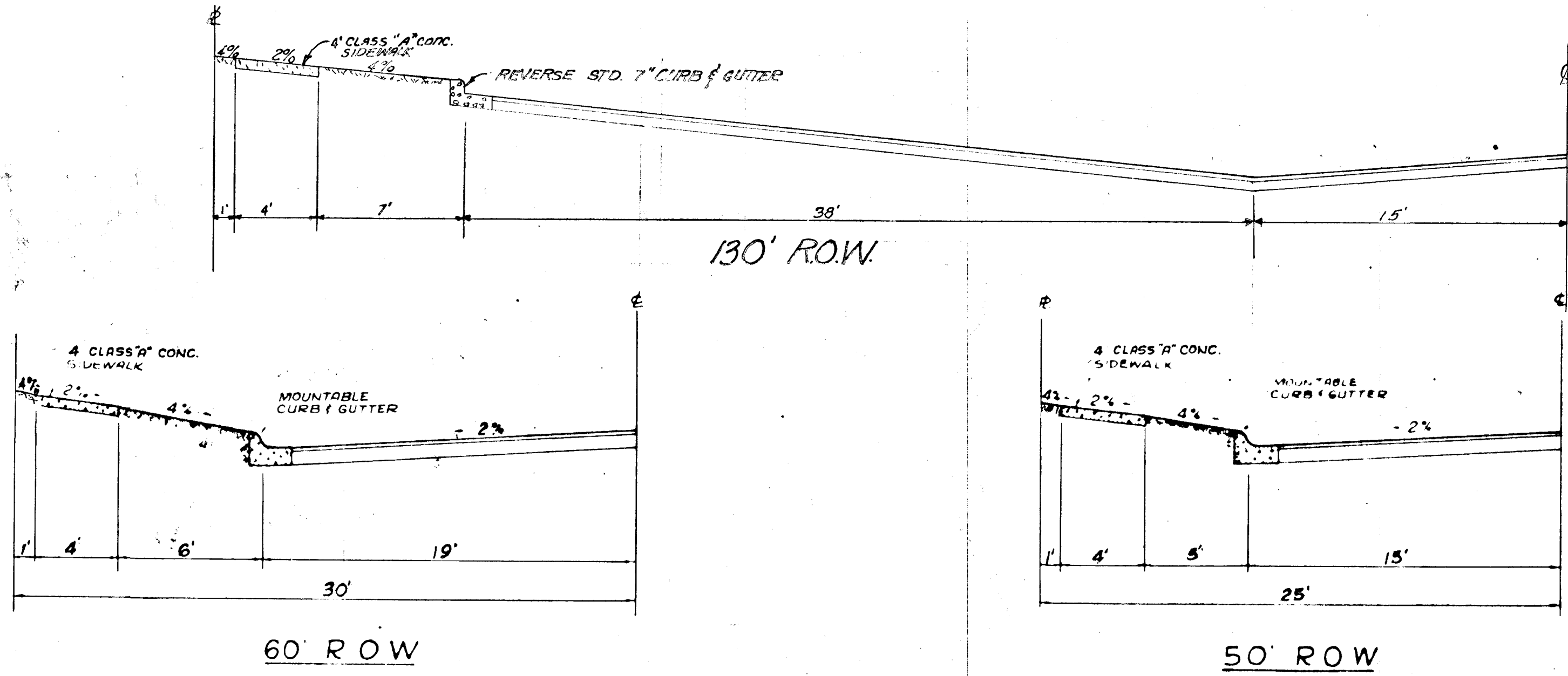
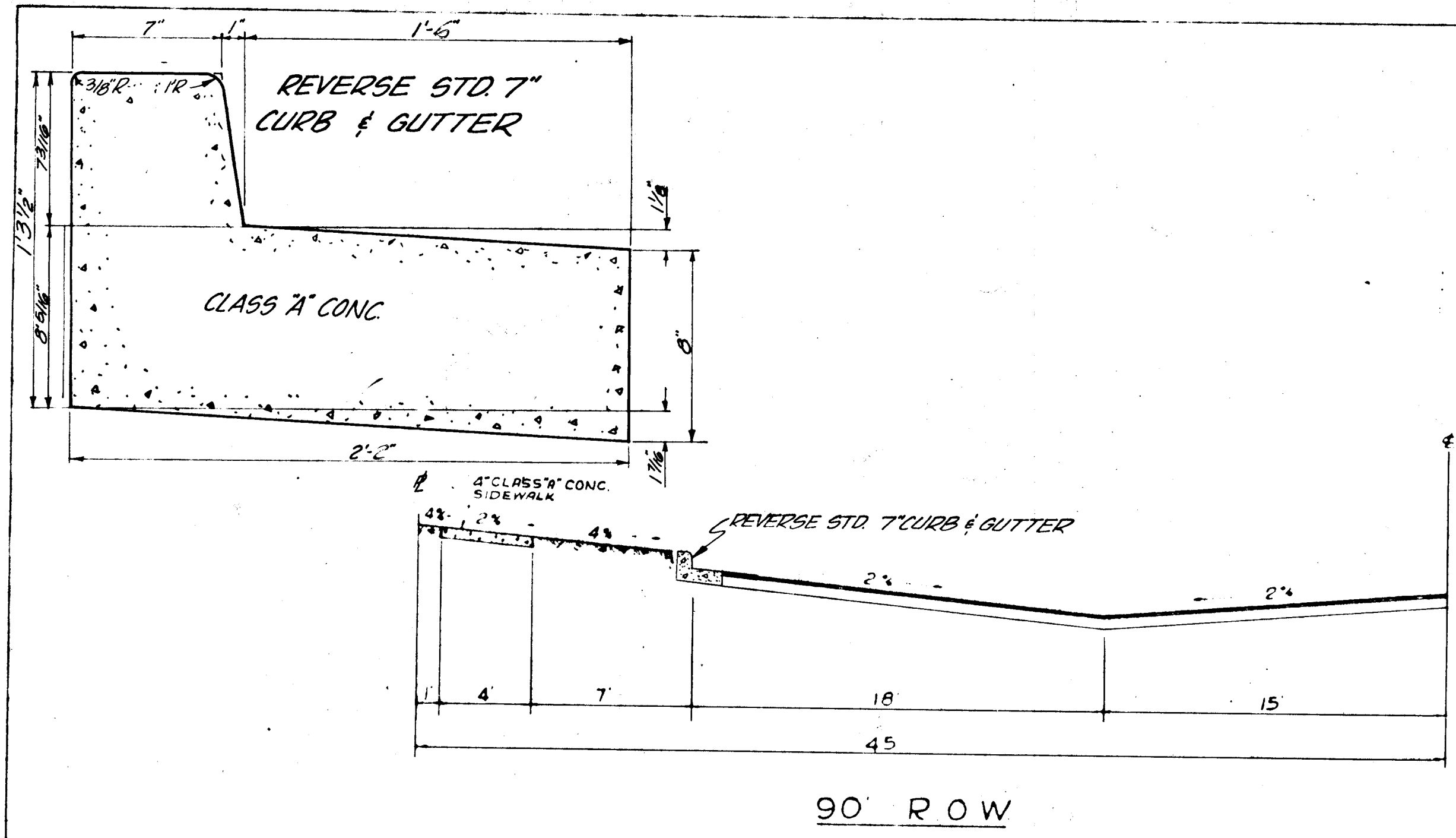
DRAINAGE PLAN AND PROFILE STRATHMORE AT COLUMBIA PART 2 VILLAGE OF HARPERS CHOICE SECTION-3, AREA-2, RESUB. LOT 13 PART 2 5<sup>TH</sup> ELECTION DISTRICT, HOWARD COUNTY, MD.

PREPARED BY ENGINEERING DEPARTMENT LEVITT & SONS, INCORPORATED MATTSVILLE, MARYLAND  
*J. H. Clouston, Jr.* P.E. MD #6802  
 DATE: Feb 27, 1969  
 SCALE: 1" = AS SHOWN DRAWING No. 43-1214-5

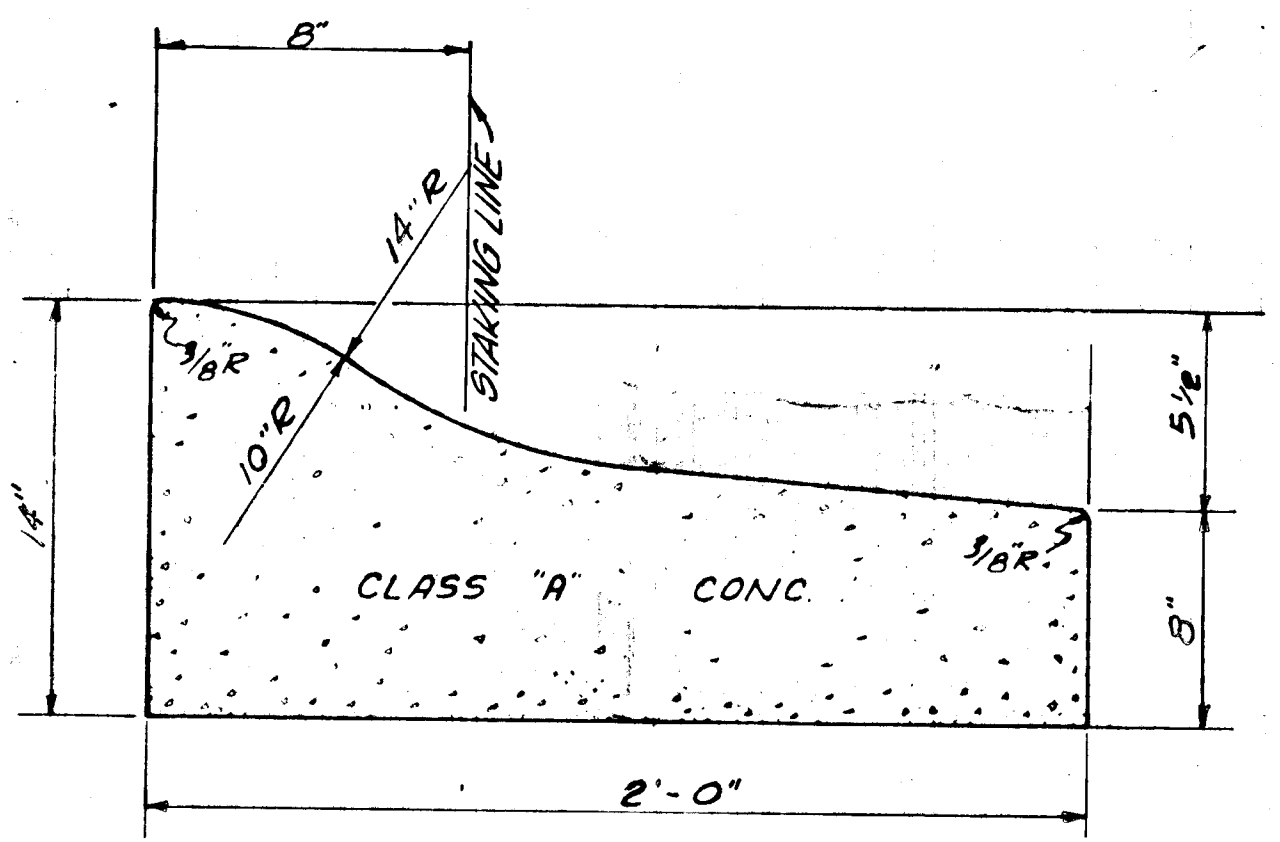
| REVISIONS |      |         |         |
|-----------|------|---------|---------|
| NO.       | DATE | SUBJECT | CHECKED |
|           |      |         |         |
|           |      |         |         |



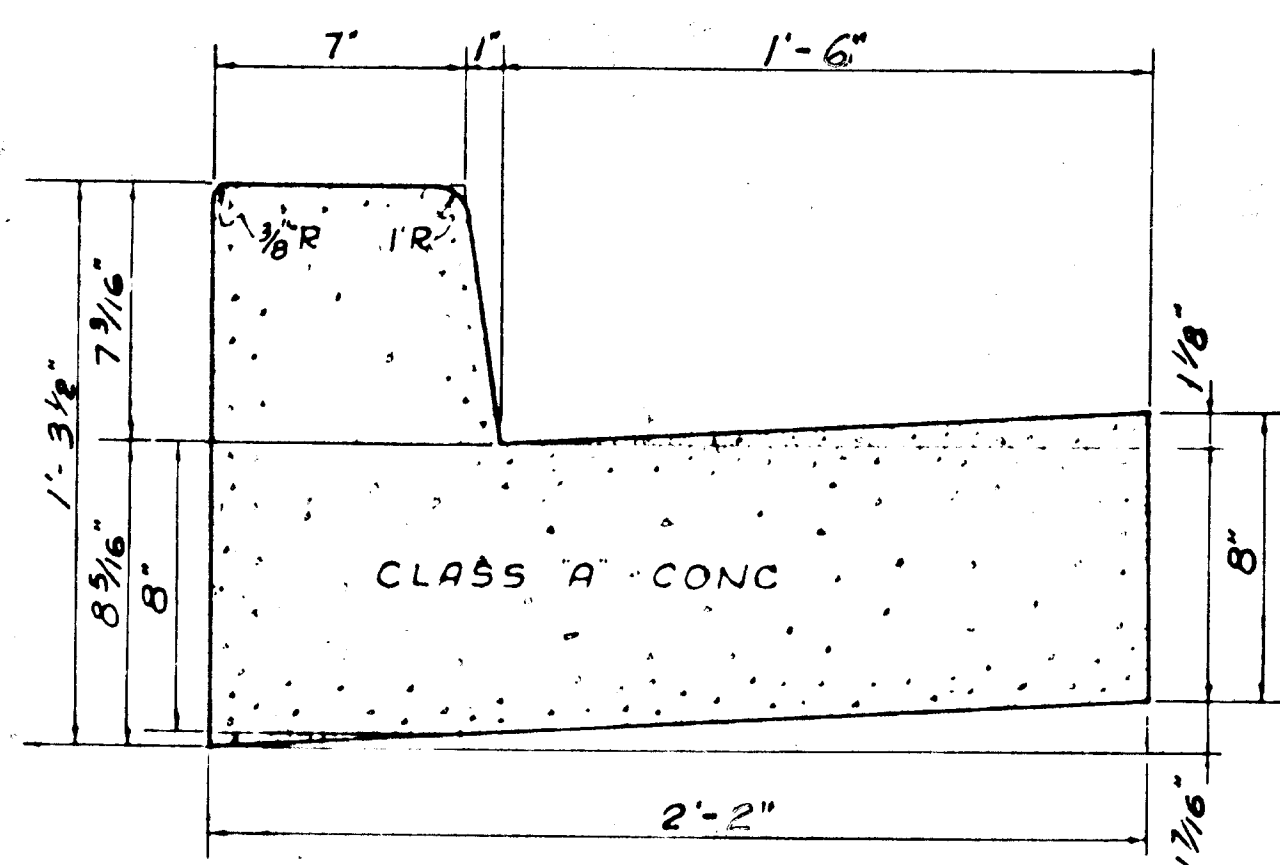
TYPICAL ROAD HALF-SECTIONS



NOTE: PAVING SECTION TO CONSIST OF 5" BITUMINOUS CONCRETE BASE COURSE AND 1.5" BITUMINOUS CONCRETE SURFACE CONSTRUCTED IN ACCORDANCE WITH THE HOWARD COUNTY ROAD CONSTRUCTION CODE AND SPECIFICATIONS, 3RD EDITION, PAGE 66, DRAWING D-17

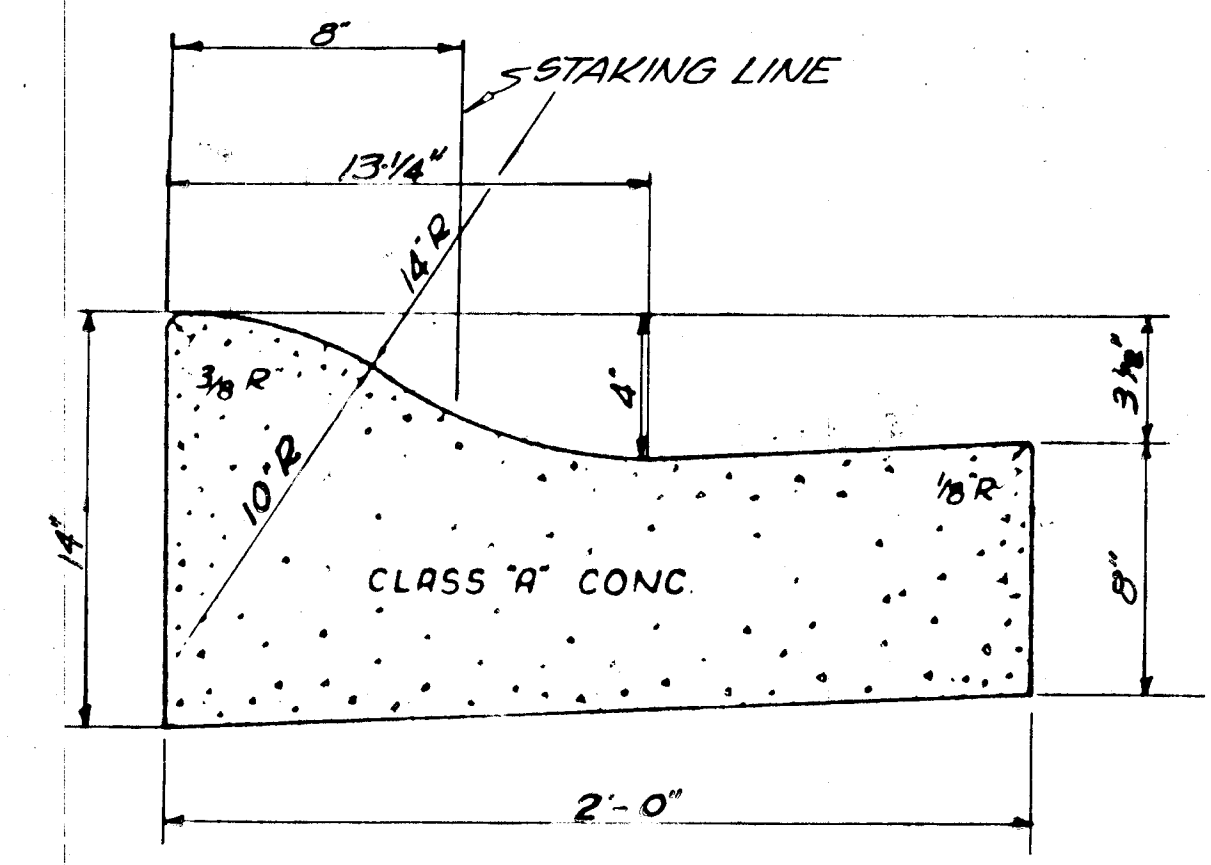


REVERSE MOUNTABLE CURB & GUTTER DET.

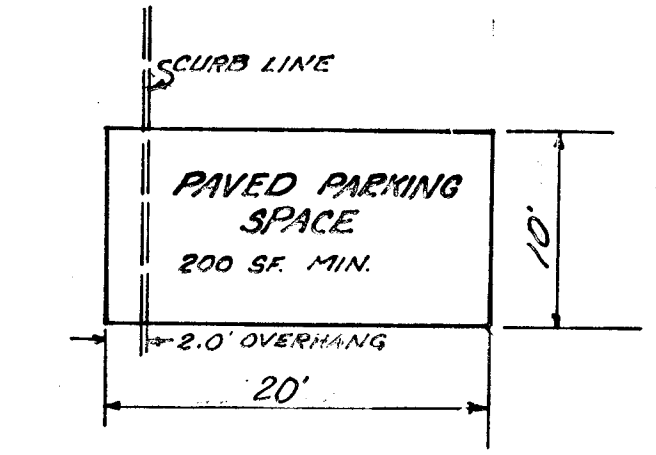


STD 7" CURB & GUTTER

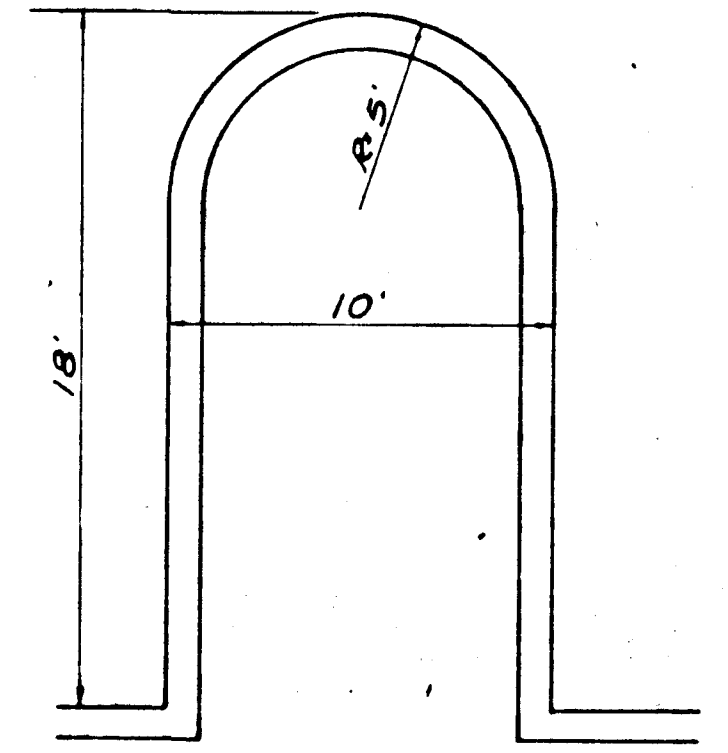
NOTE TO BE USED AT CURB INLETS WITH A 10' TRANSITION FROM MOUNTABLE CURB



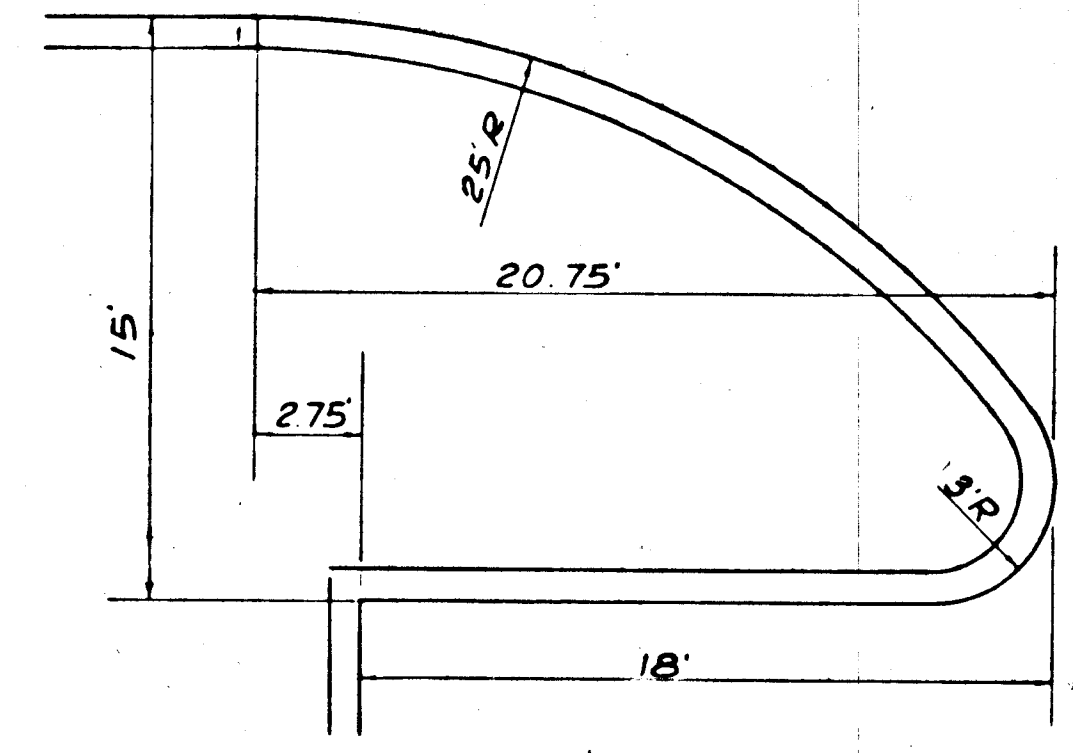
MODIFIED COMBINATION GUTTER DETAIL



TYPICAL PARKING SPACE (NO SCALE)



TYPICAL CURB DETAIL OF PARKING AREA DIVIDER



TYPICAL CURB DETAIL OF ENTRANCE TO PARKING AREA

| DEPARTMENT OF PUBLIC WORKS                   |         |  |         |
|--|---------|--|---------|
| Granville W. McLeod                          |         | 5-19-69  |         |
| CHIEF BUREAU OF HIGHWAYS                     |         | DATE   |         |
| OFFICE OF PLANNING & ZONING                  |         |  |         |
| J. H. Dawson, Jr.                            |         | 6-11-69  |         |
| CHIEF ENGINEER, DIVISION OF ROAD DEVELOPMENT |         | DATE   |         |
| REVISIONS                                    |         |  |         |
| NO   | DATE    | SUBJECT  | CHECKED |
| 1  | 11/1/69 | ADDED REVERSE STD. 7" CURB AND STAKING LINE TO MOUNTABLE CURB & GUTTER |         |
|  |         |  |         |
|  |         |  |         |

**ROAD DETAILS**  
**STRATHMORE AT COLUMBIA**  
 PART  
**VILLAGE OF HARPERS CHOICE**  
 SECTION 3, AREA 2, RESUB LOT 13, PART  
 5<sup>TH</sup> ELECTION DISTRICT, HOWARD CO, MD.  
 OWNER & DEVELOPER  
 THE HOMER DEVELOPMENT CORP  
 66 SMITH BANNERHILL & CARR, 1700 ONE CHARTER CENTER  
 BALTIMORE, MARYLAND  
 DESIGNED BY  
 ENGINEERING DESIGN, LUTT AND SONS, INCORPORATED  
 1101 N. WASHINGTON ST., BALTIMORE, MD. 21201  
 J. W. Lutt  
 CHIEF ENGINEER  
 DATE: 11-27-1969  
 SCALE: NO SCALE DRAWING No. 13-125-5