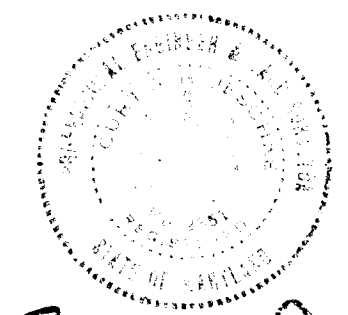






9 November 1968  
DATE



*Carl R. J. ...*  
REG. NO. 101

APPROVED: OFFICE OF PLANNING AND ZONING

*J.H. Clauson*  
Chief Engineer, Division of Land Development  
DATE: 3-21-69

APPROVED: DEPARTMENT OF PUBLIC WORKS  
*Granville R. Welland*  
Chief, Bureau of Highways  
DATE: 9/18/69

OWNER AND DEVELOPER: THE DUNLOGGIN CO. OF HO. CO.  
687 BALTIMORE NATIONAL PIKE  
ELLICOTT CITY, MARYLAND

ENGINEER: PURDUM & RESCHKE  
24 PARK AVENUE  
ELLICOTT CITY, MARYLAND

PLAN AND PROFILE: ROCK MEADOW DR.  
PROFILE: SPRING MEADOW COURT

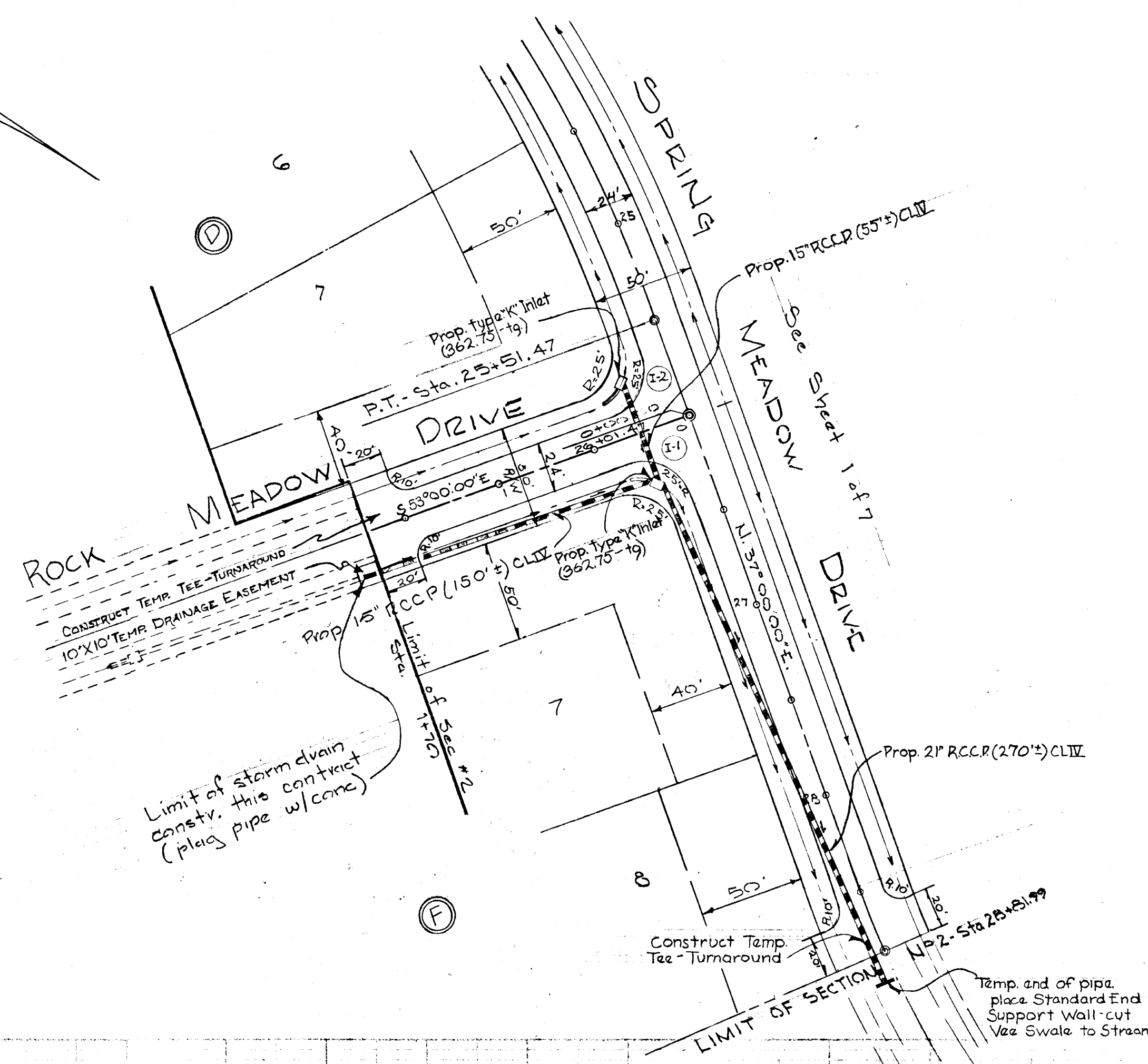
SECTION NO. 2

# DUNLOGGIN II

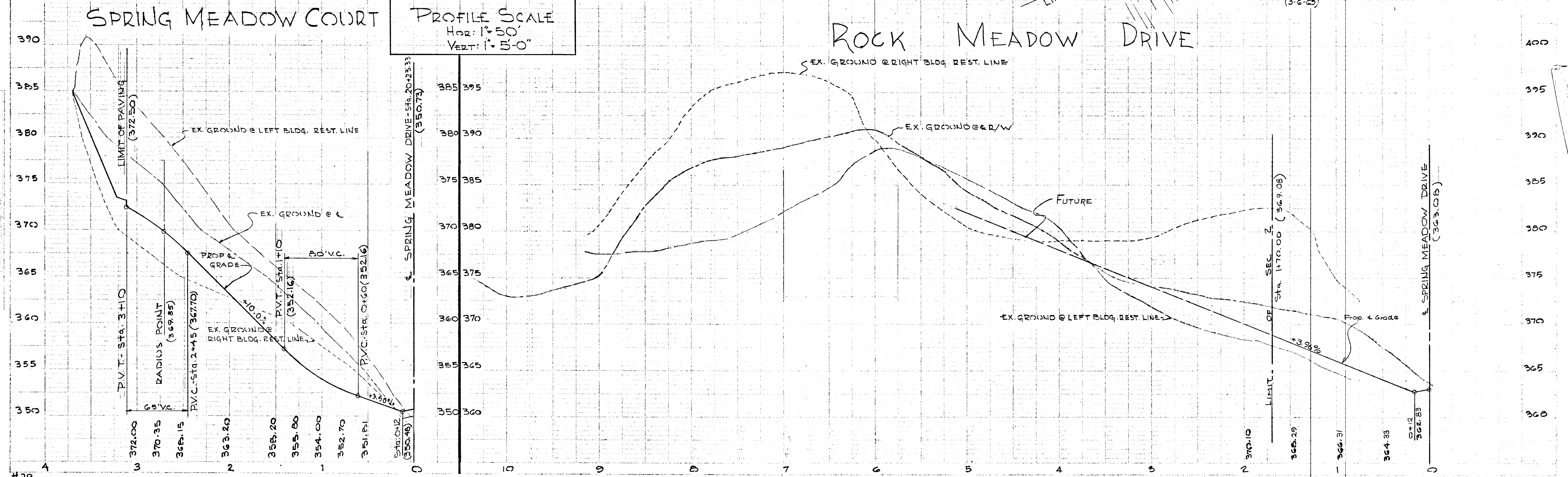
SECOND ELECTION DIST. HOWARD COUNTY, MD.

NOVEMBER 11, 1968  
(11-20-68)  
(1-18-69)  
(3-6-69)

SCALE: AS SHOWN  
Sheet No. 2 of 7



PLAN  
SCALE: 1"=50'



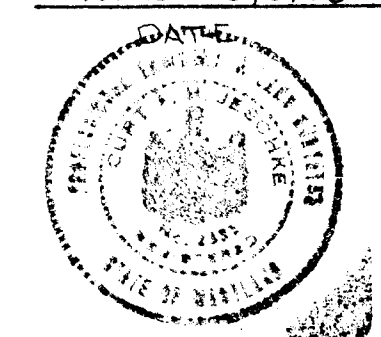
#29

FCB-21





November 5, 1968

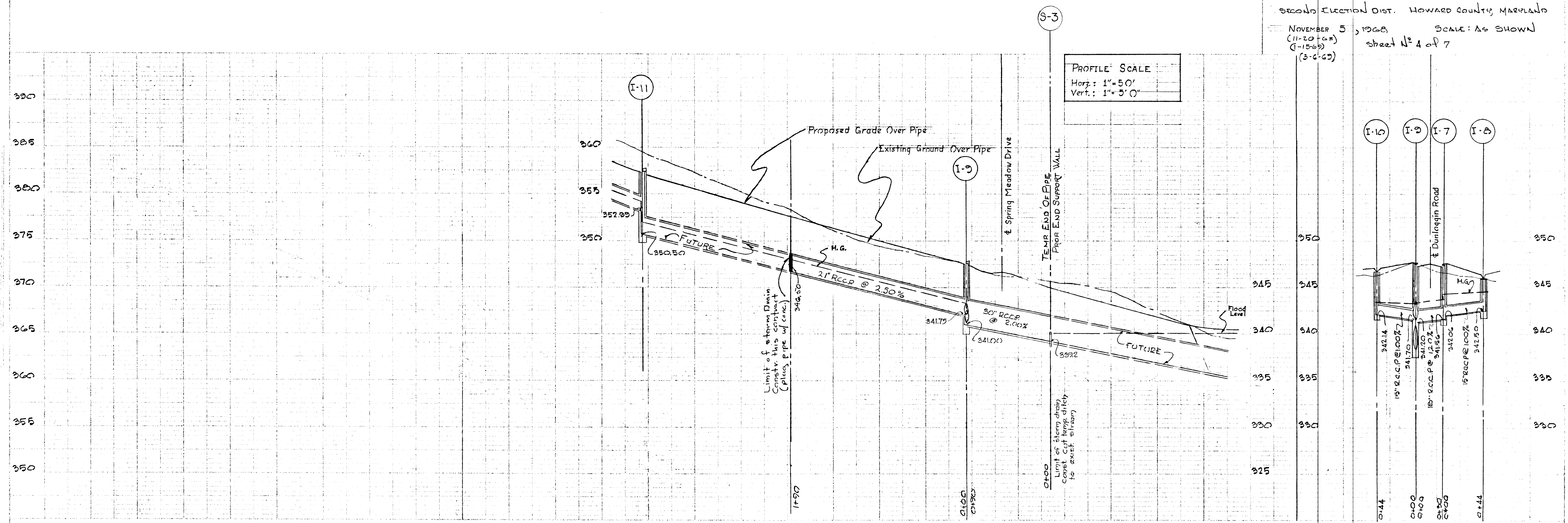


*Paul A. Androske*  
REG. NO. 0351

APPROVED: OFFICE OF PLANNING AND ZONING  
*J. H. Clawson* 3-21-69  
Chief Engineer, Division of Land Development DATE  
APPROVED: DEPARTMENT OF PUBLIC WORKS  
*Granville W. Welland* 3/18/69  
Chief, Bureau of Highways DATE

OWNER AND DEVELOPER THE DUNLOGGIN CORP. OF HO. CO. 687 BALTIMORE NATIONAL AVE. ELLICOTT CITY, MARYLAND  
ENGINEER DUDUM & JESCHKE 24 PARK AVENUE ELLICOTT CITY, MARYLAND

STORM DRAIN PROFILES  
SECTION No 2  
**DUNLOGGIN II**  
SECOND ELECTION DIST. HOWARD COUNTY, MARYLAND  
NOVEMBER 5, 1968 (11-20-68) (1-15-69) (3-6-69)  
SCALE: AS SHOWN  
street No 4 of 7




# 29

FIGURE 1 PLAN (11-20-68) (1-15-69) (3-6-69)

F68-84

November 5, 1968  
DATE



Carl H. Schutte  
REG. NO. 6851

APPROVED: OFFICE OF PLANNING AND ZONING  
*J.H. Clawson* 3-21-69  
Chief Engineer, Division of Land Development DATE

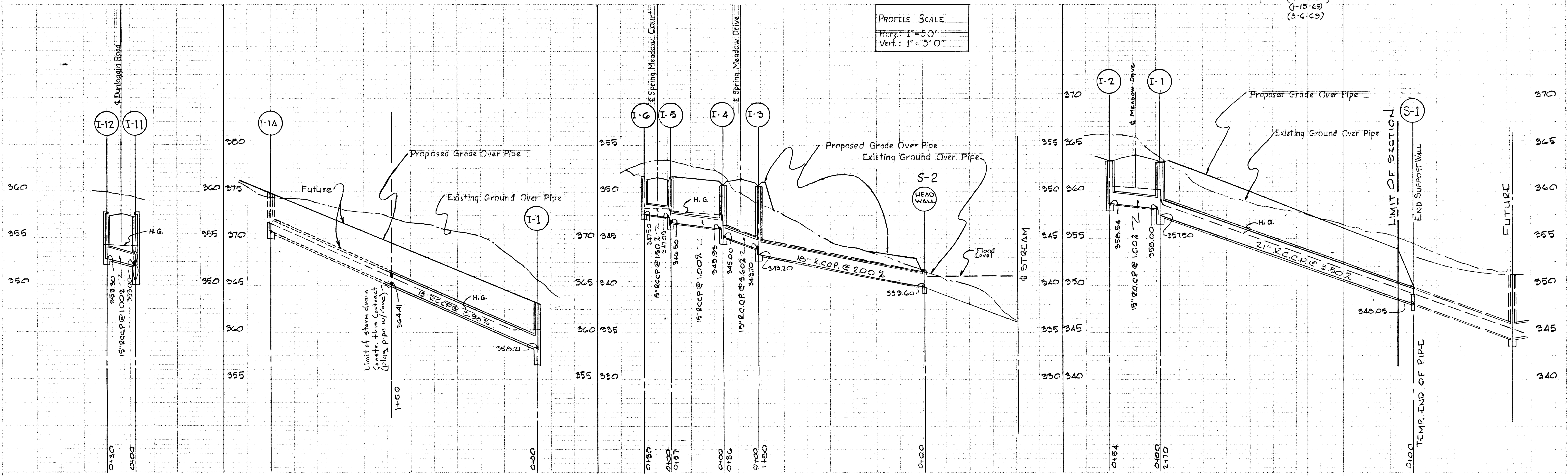
APPROVED: DEPARTMENT OF PUBLIC WORKS  
*Francis H. Weiland* 3/18/69  
Chief, Bureau of Highways DATE

OWNER AND DEVELOPER: THE DUNLOGGIN CORP. OF MD. CO.  
 627 BALTIMORE NAT'L PIKE  
 ELICOTT CITY, MARYLAND

ENGINEER: PURDOM & JESCHKE  
 24 PARK AVENUE  
 ELICOTT CITY, MARYLAND

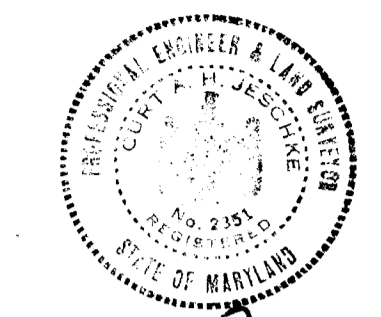
STORM DRAIN PROFILES  
 SECTION NO. 2  
 DUNLOGGIN II  
 SECOND ELECTION DIST. HOWARD COUNTY, MARYLAND  
 NOVEMBER 5, 1968  
 (11-20-68)  
 (12-23-68)  
 (1-15-69)  
 (3-6-69)

SCALE: AS SHOWN  
 sheet No. 5 of 7.





November 5, 1968  
Date



*Carlton J. Schke*  
Reg. No. 2351  
Date 12-23-68

APPROVED: OFFICE OF PLANNING AND ZONING

*J. H. Clewson* 3-21-69  
Chief Engineer, Division of Land Development Date  
APPROVED: DEPARTMENT OF PUBLIC WORKS  
*Bravelle W. Wehland* 3/18/69  
Chief, Bureau of Highways Date

OWNER AND DEVELOPER: THE DUNLOGGIN CORP. of HO. CO.  
807 BALTIMORE NATIONAL PIKE  
ELLICOTT CITY, MARYLAND

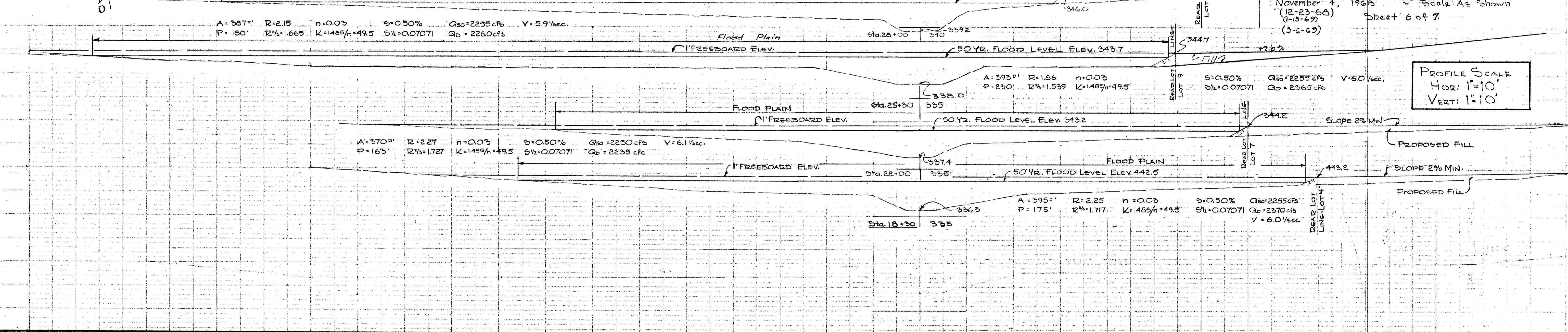
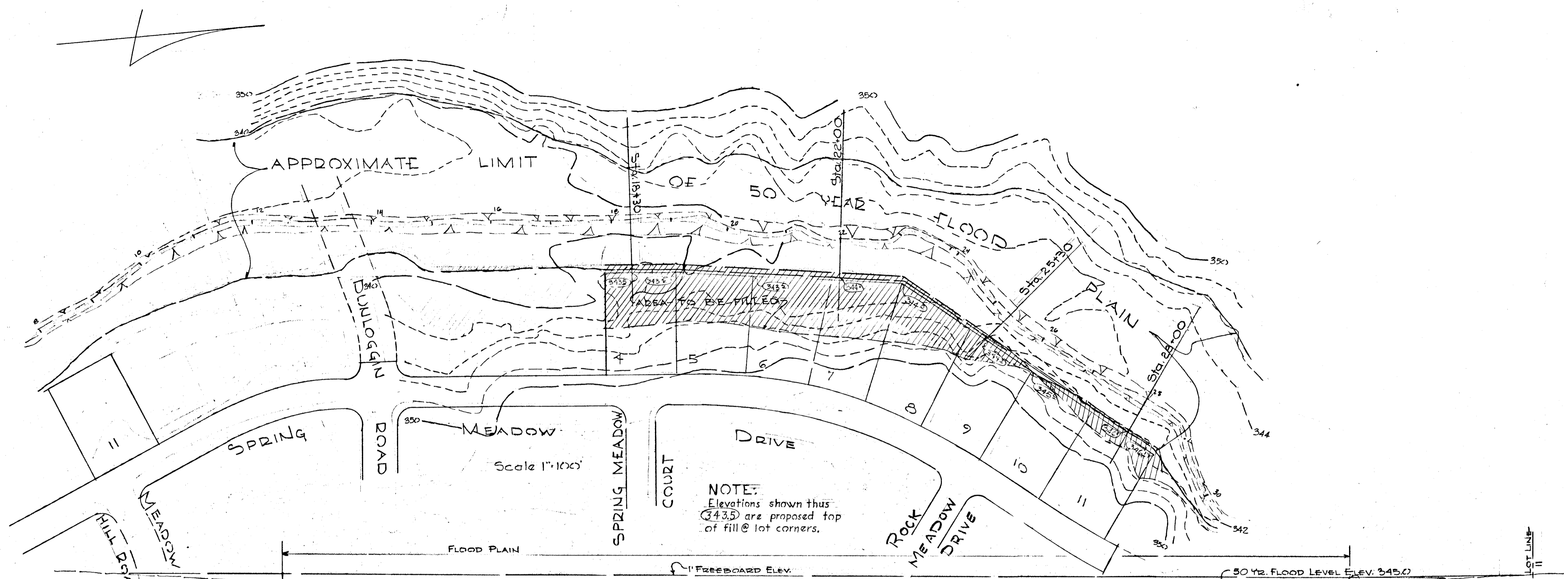
ENGINEER: PURDUM AND WESCHKE  
24 PARK AVENUE  
ELLICOTT CITY, MARYLAND

FLOOD PLAIN PLAN AND DETAILS

SECTION No. 2  
**DUNLOGGIN II**

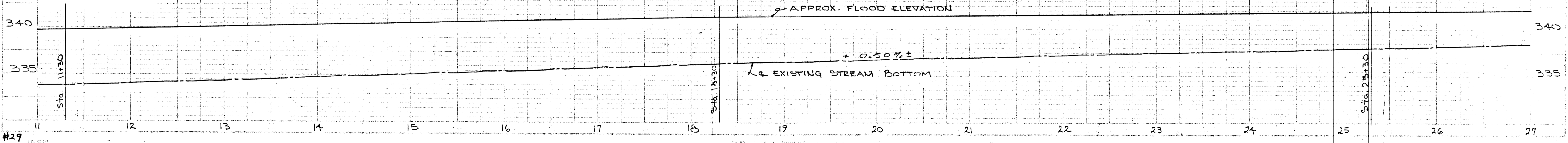
Second Election District - Howard County, Maryland

November 4, 1968 (12-23-68)  
(1-15-69)  
Scale: As Shown  
Sheet 6 of 7

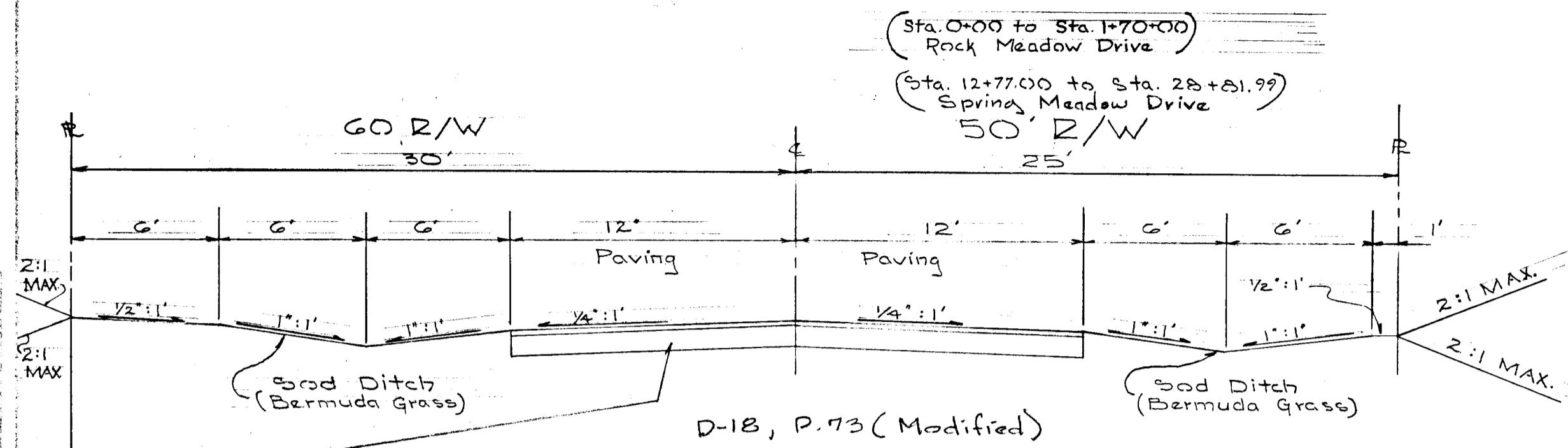


PROFILE SCALE  
HOR: 1"=10'  
VERT: 1"=10'

PROFILE SCALE  
HOR: 1"=50'  
VERT: 1"=5'-0"



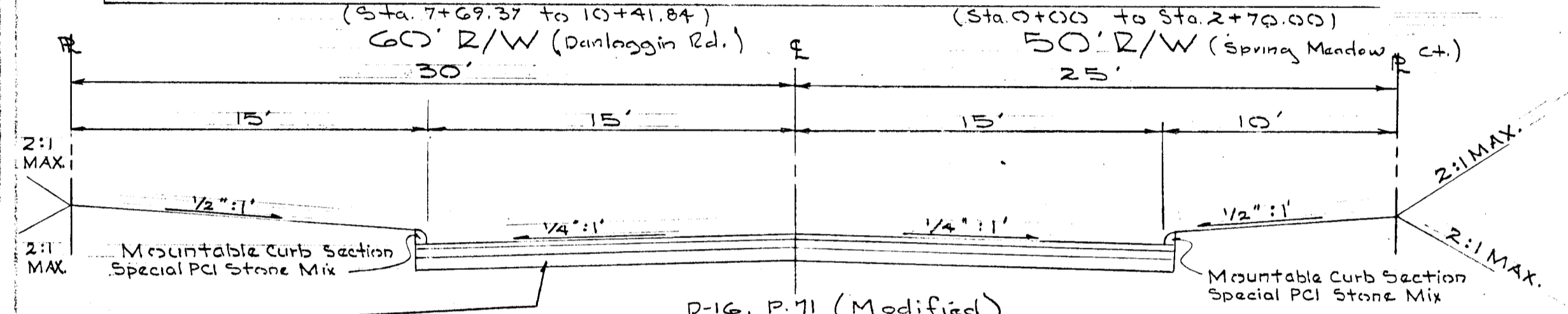
TYPICAL SECTIONS



D-18, P. 73 (Modified)

No SCALE

Minimum 9" of compacted Bank Run Gravel M.S.R.C. Spec.  
 2 lbs. Calcium Chloride per Sq. Yd. - Leave 30 days, apply 1/10 gal. prime oil per Sq. Yd. - Leave 5 days.  
 1 1/2" comp. Spec. "B" Bit. concrete base course.  
 1" comp. Spec. "B" Bit. concrete surface course.  
 (This surface type to be constructed in accordance with Article C31 Howard Co. Rd. Spec.)



D-16, P. 71 (Modified)

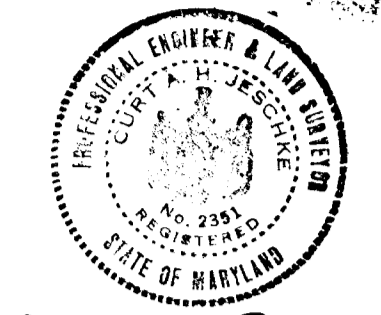
No SCALE

Minimum 9" of compacted Bank Run Gravel M.S.R.C. Spec.  
 2 lbs. Calcium Chloride per Sq. Yd. - Leave 30 days  
 1 1/2" comp. Spec. "B" Bit. concrete base course  
 1" comp. Spec. "B" Bit. concrete surface course  
 (This surface type to be constructed in accordance with Article C31 Howard Co. Rd. Spec.)

GENERAL NOTES

- 1) For details of Mountable Curb, see drawing D-39, page 94 of The Howard County Road Specifications
- 2) For details of Standard End Support Wall, see drawing D-46, page 101 of the above mentioned specifications.
- 3) For details of type "K" Masonry Inlet, see drawing 94, page 149 of the above mentioned Specifications.
- 4) For details of Std. Class "E" Comb. Inlet see drawing D-68 page 123 of the above mentioned Specifications
- 5) For details of double "E" comb. Inlet see attached sheet.

November 5, 1968  
Date



*Carla J. Soble*  
Professional Engineer & Surveyor  
No. 2551  
State of Maryland

APPROVED: OFFICE OF PLANNING AND ZONING

*J.H. Clawson* 3-21-69  
Chief Engineer, Division of Land Development Date  
 APPROVED: DEPARTMENT OF PUBLIC WORKS  
*Lawrence W. Meland* 3/18/69  
Chief, Bureau of Highways Date

OWNER AND DEVELOPER	ENGINEERS
THE DUNLOGGIN CORP OF MD. CO. 687 BALTIMORE NATIONAL PIKE ELLCOTT CITY, MARYLAND	PURDUM & WESCHKE 24 PARK AVENUE ELLCOTT CITY, MARYLAND

DETAIL SHEET

SECTION No. 2  
DUNLOGGIN II

SECOND ELECTION DIST. - HOWARD COUNTY, MD.  
 NOVEMBER 5, 1968 - SCALE: AS SHOWN  
 (1-15-69) SHEET 7 of 7  
 (3-6-65)