

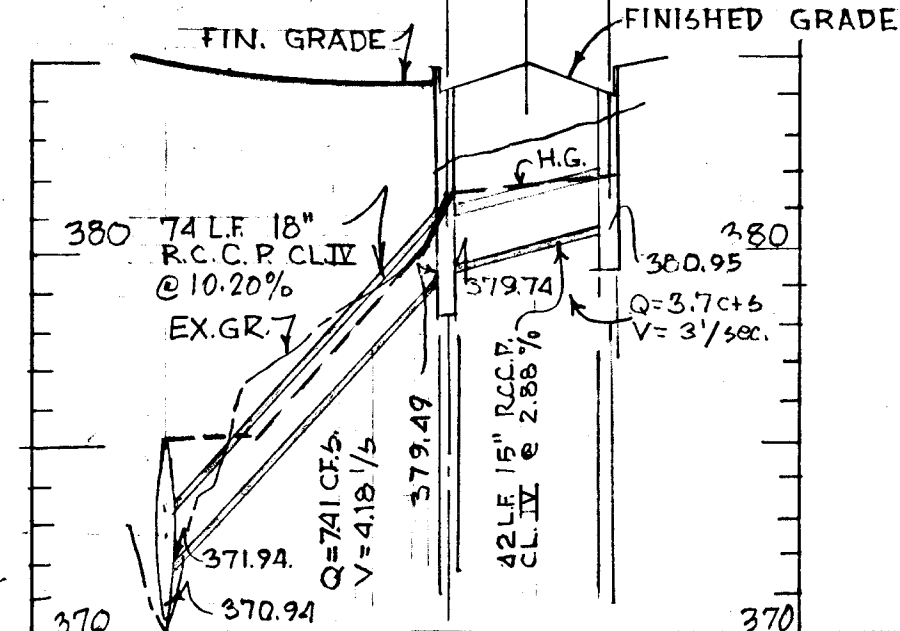
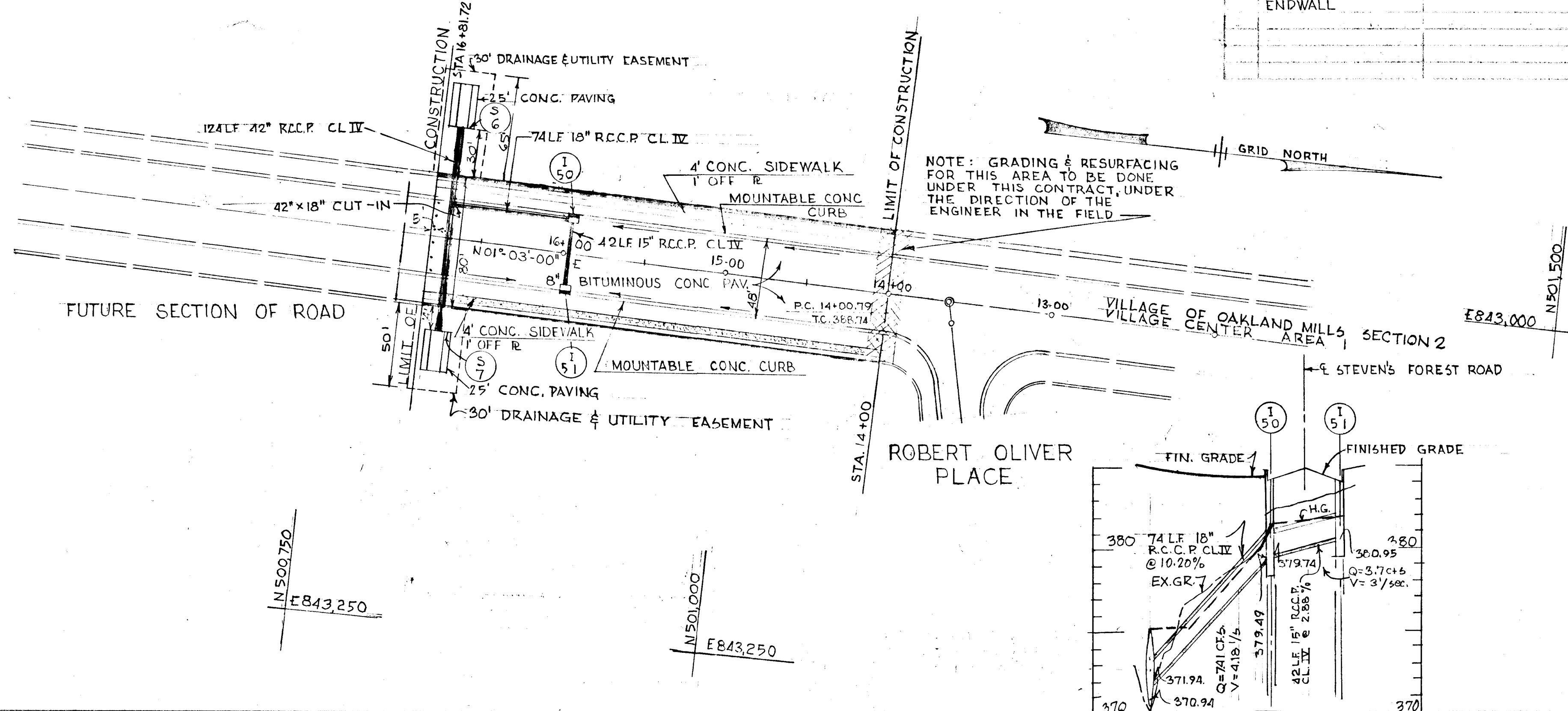
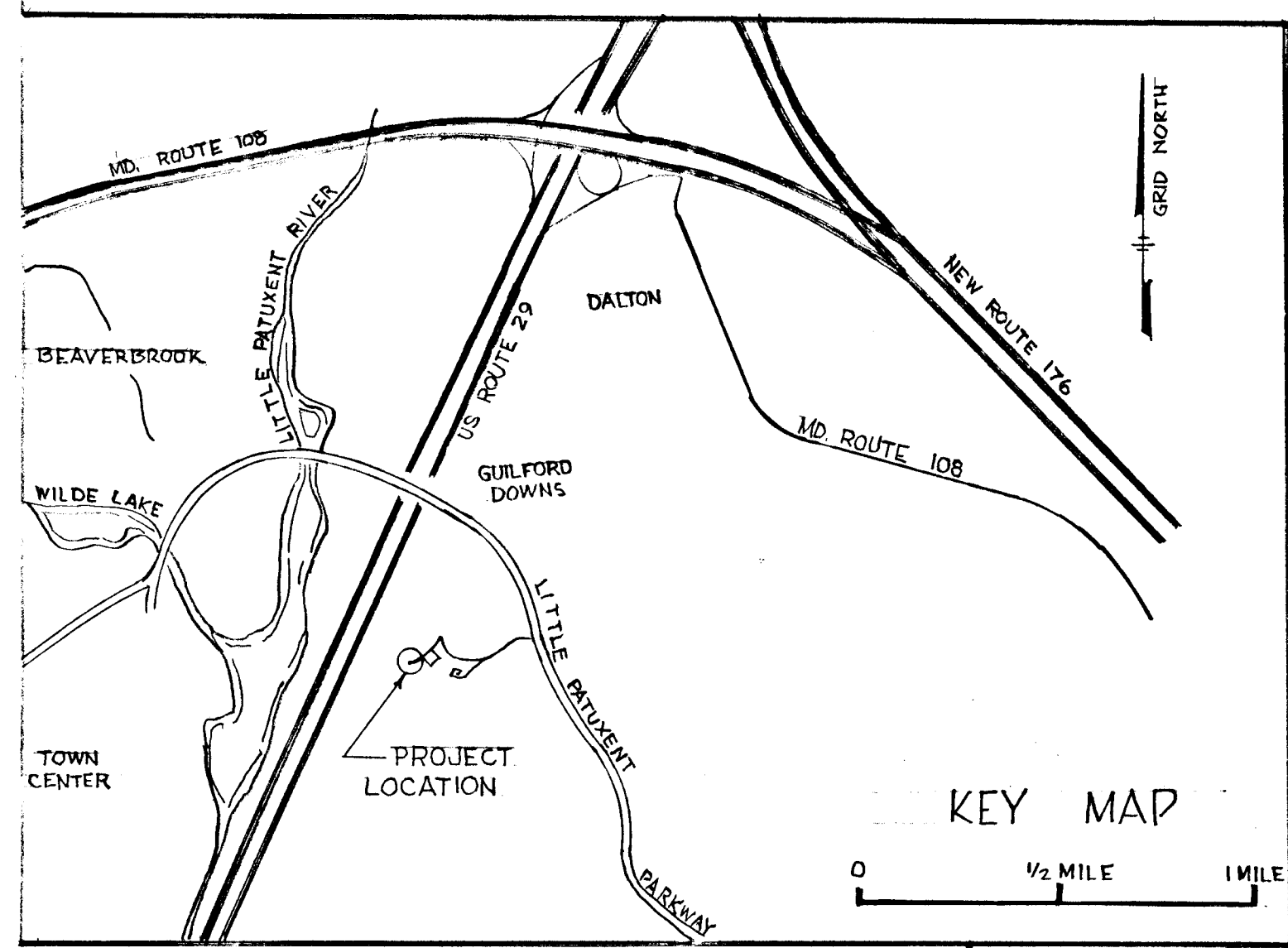
NOTE:  
 1. ALL DETAILS ARE FROM "ROAD CONSTRUCTION CODE AND STANDARD SPECIFICATIONS" ISSUED OR APPROVED BY THE COUNTY COMMISSIONERS AND THE HOWARD COUNTY ROADS DEPARTMENT.  
 2. CONTRACTOR SHALL NOTIFY ALL UTILITY COMPANIES AT LEAST 48 HOURS BEFORE CONSTRUCTION.  
 3. ALL ROADS ARE DESIGNED FOR 30MPH TRAFFIC SPEED IN ACCORDANCE WITH THE AMERICAN ASSOCIATION OF THE STATE HIGHWAY OFFICIAL STANDARDS

APPROVED HOWARD COUNTY PLANNING COMM.  
 J.H. Lawson, Jr. 12-26-68  
 CHIEF ENGINEER DATE  
 APPROVED HOWARD COUNTY ROADS DEPT.  
 Lawrence N. Weiland 12-11-68  
 ROADS SUPERINTENDENT DATE  
 APPROVED HOWARD COUNTY METROPOLITAN COMM.  
 W.O. Palbert 12-17-68  
 CHIEF ENGINEER DATE

PLAN  
 SCALE 1"=50'

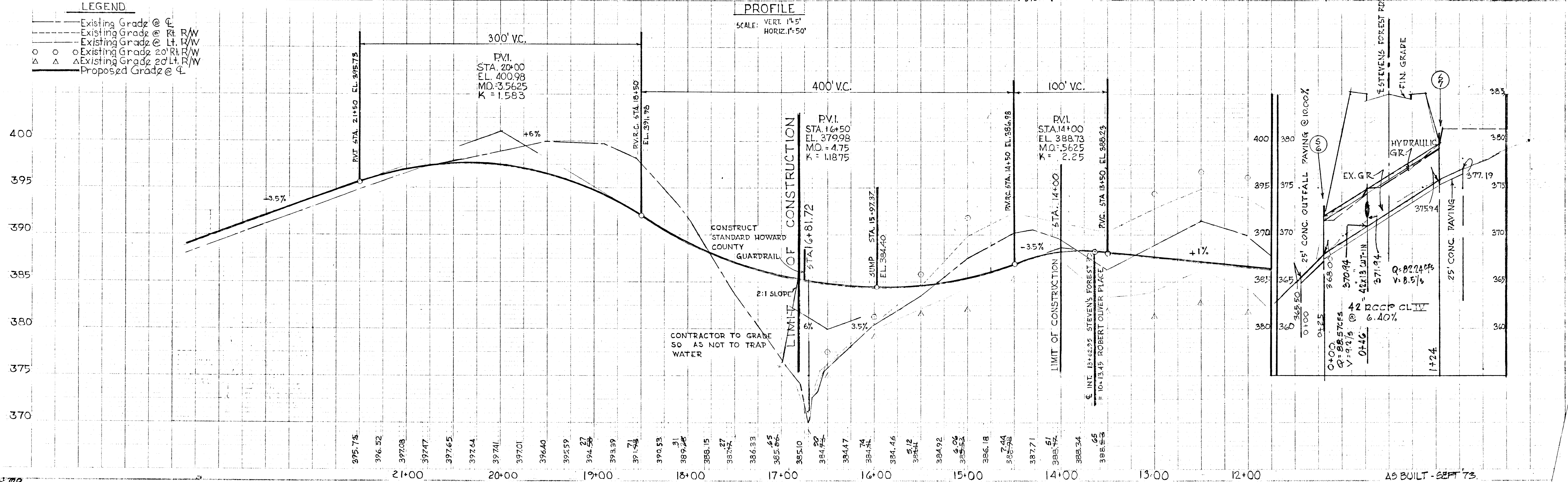
STEVEN'S FOREST ROAD

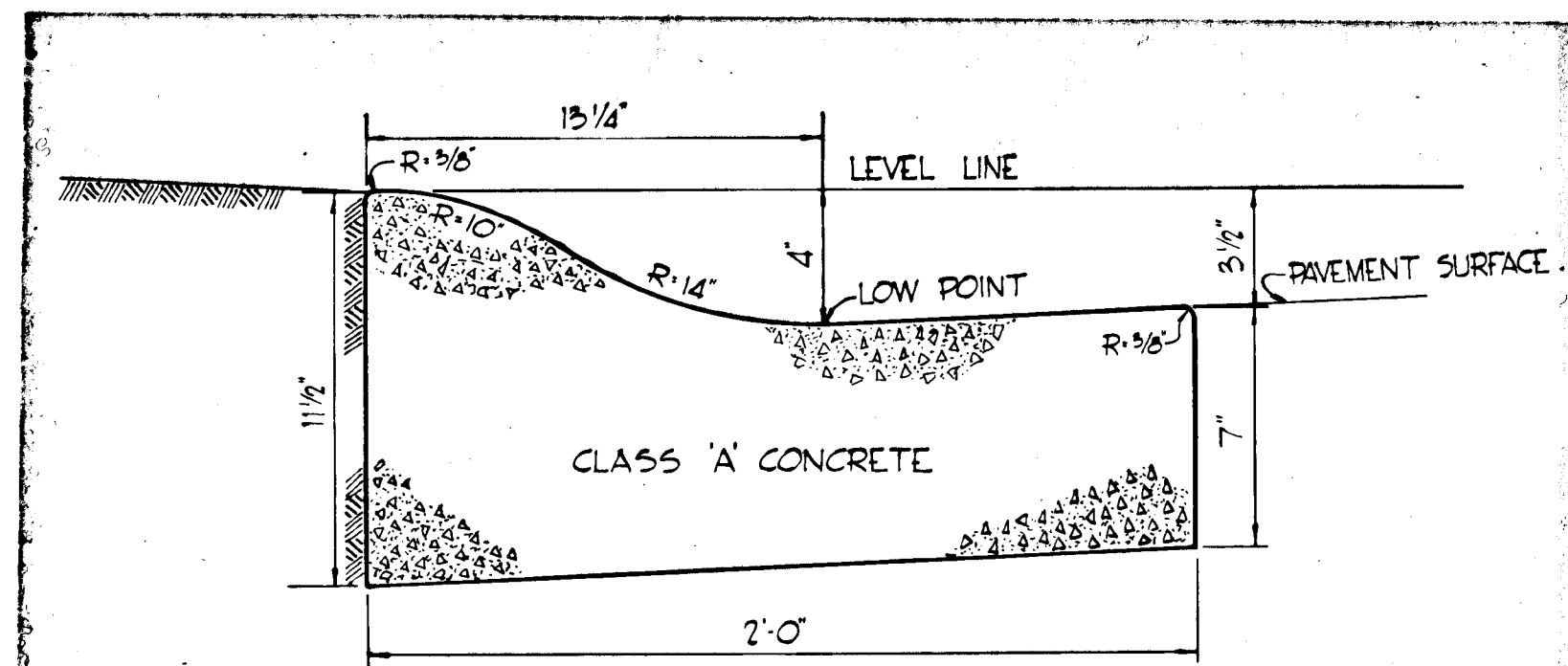
NO.	TYPE	LOCATION	INVERT	LENGTH	REMARKS
150	MOD 5 COMB. INLET (SINGLE GRATE)	E STA. 15+97.47 - 21.4' Rt. of C.	379.74	379.49	384.73 SEE DETAIL 5H.2 of 2
151	MOD 5 COMB. INLET (SINGLE GRATE)	E STA. 15+97.47 - 21.4' Lt. of C.	380.95	384.73	SEE DETAIL 5H.2 of 2
5-6	HO. CO. STD. TYPE "C" ENDWALL	E STA. 16+71.72	375.94	—	SEE HO. CO. STD. DETAILS, DRWG. D-52 PAGE 107.
5-7	HO. CO. STD. TYPE "C" ENDWALL	E STA. 16+71.72	375.94	—	SEE HO. CO. STD. DETAILS, DRWG. D-52 PAGE 107.



BROWNE, PANDULLO & ASSOCIATES  
 ENGINEERS  
 24 DEC 68 1 REMOVED INLET STA. 14+06  
 COLUMBIA ENGINEERS  
**COLUMBIA**  
 6<sup>TH</sup> ELECTION DISTRICT HOWARD COUNTY  
 HOWARD RESEARCH AND DEVELOPMENT CORP.  
 VILLAGE OF OAKLAND MILLS  
 SECTION 2 VILLAGE CENTER AREA 2  
 STEVEN'S FOREST ROAD  
 DES. BY T.S.  
 DRAWN BY P.R.  
 AUGUST 8, 1968

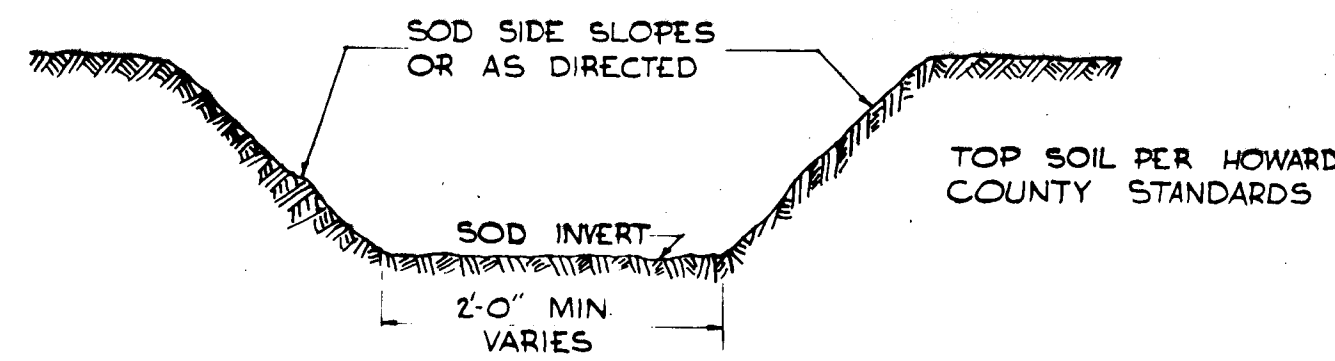
Richard P. Browne  
 RICHARD P. BROWNE REG. 5238





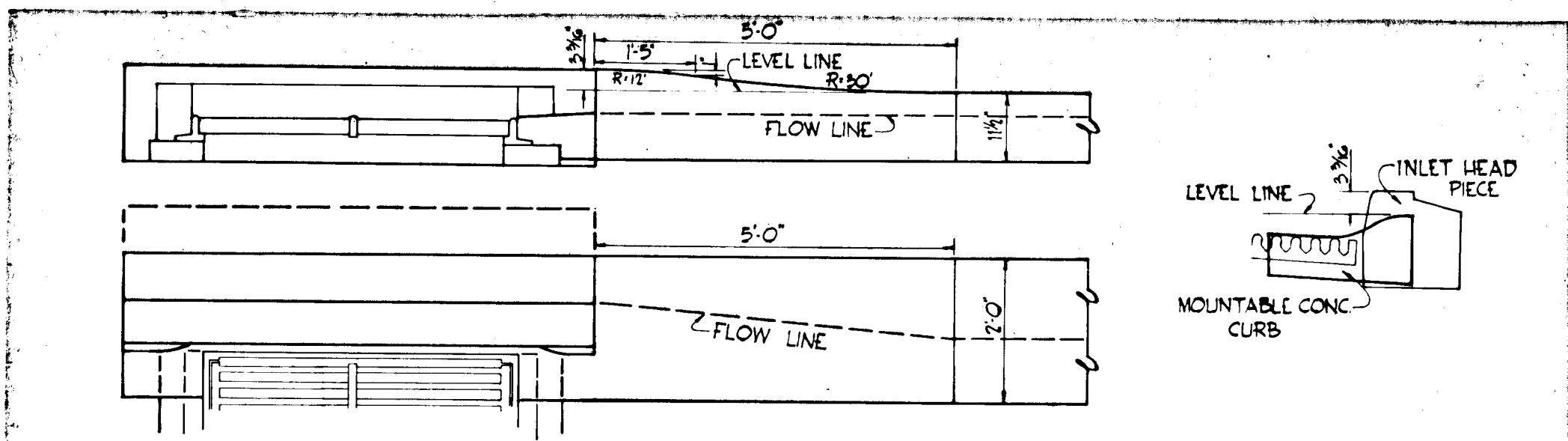
MOUNTABLE CONCRETE CURB

NO SCALE



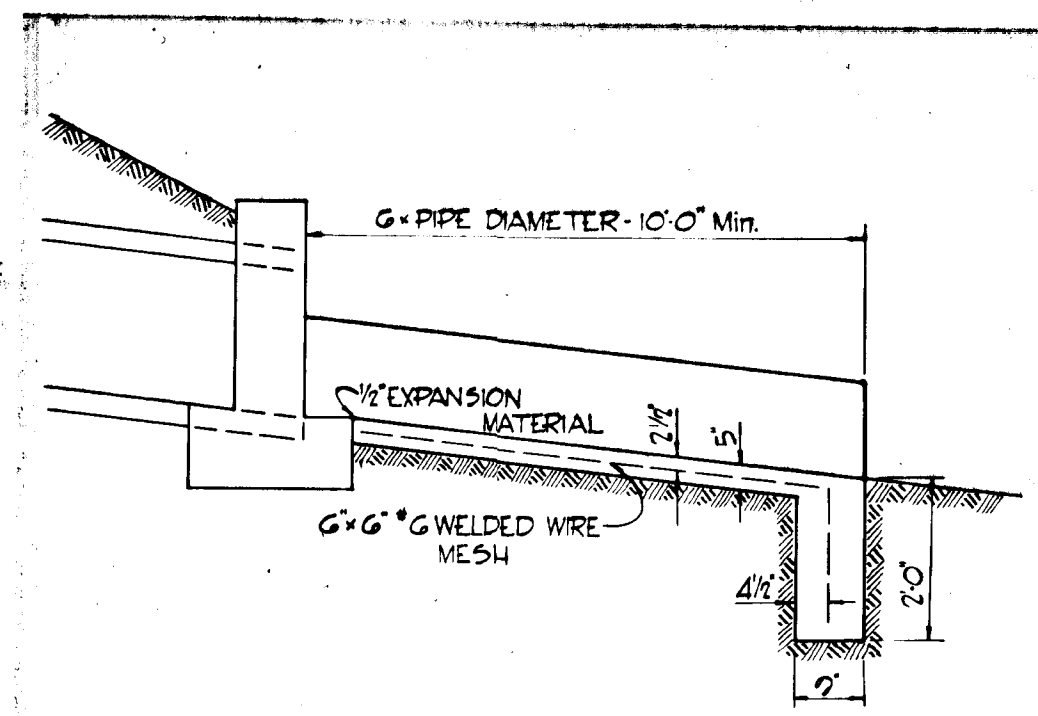
NOTE: ALL EXISTING DITCHES APPROACHING PROPOSED ENDWALLS SHALL BE TRIMMED IN ACCORDANCE WITH ARTICLE C-6 OF THE HOWARD COUNTY ROAD CONSTRUCTION CODE AND STANDARD SPECIFICATIONS.

TYPICAL DRAINAGE DITCH  
NO SCALE

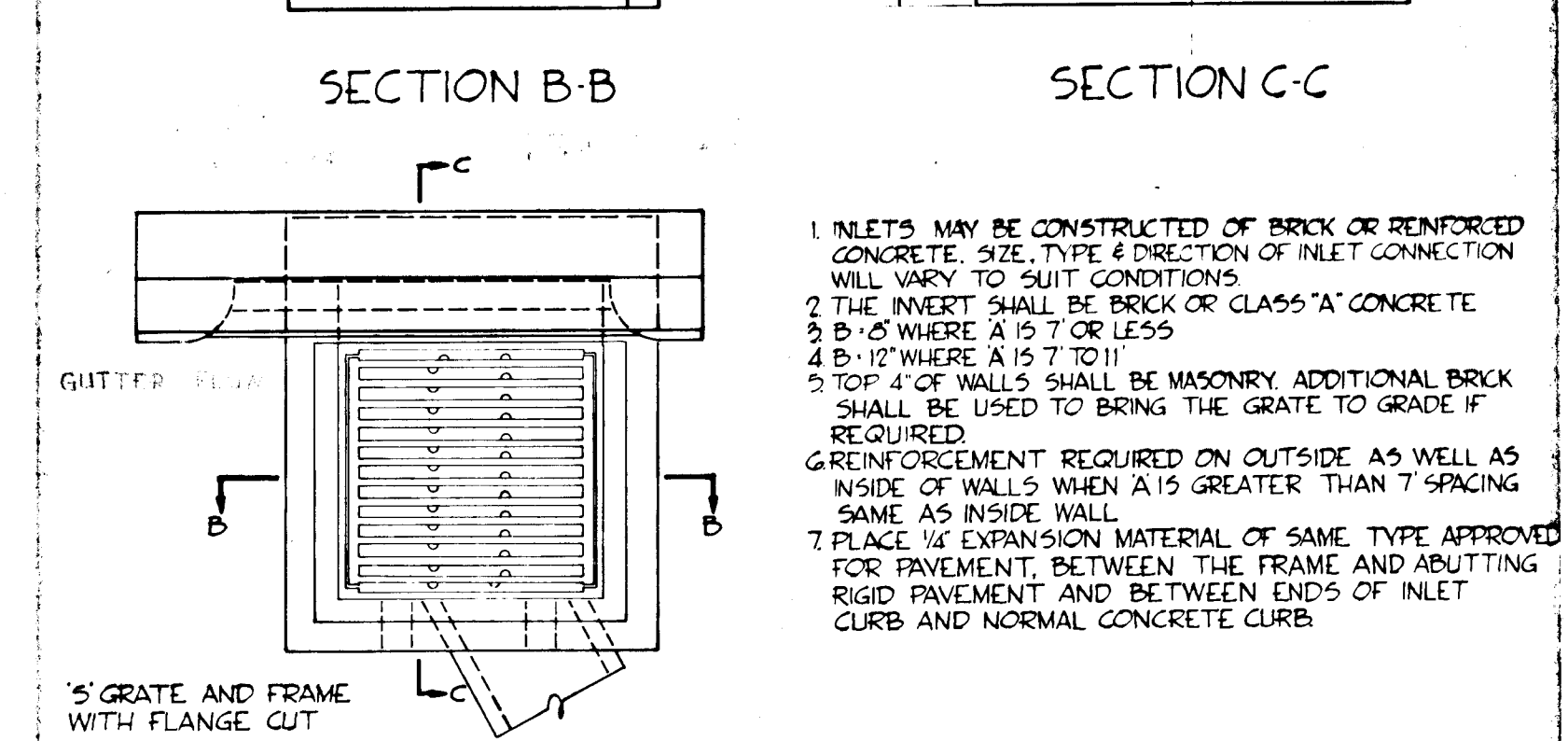
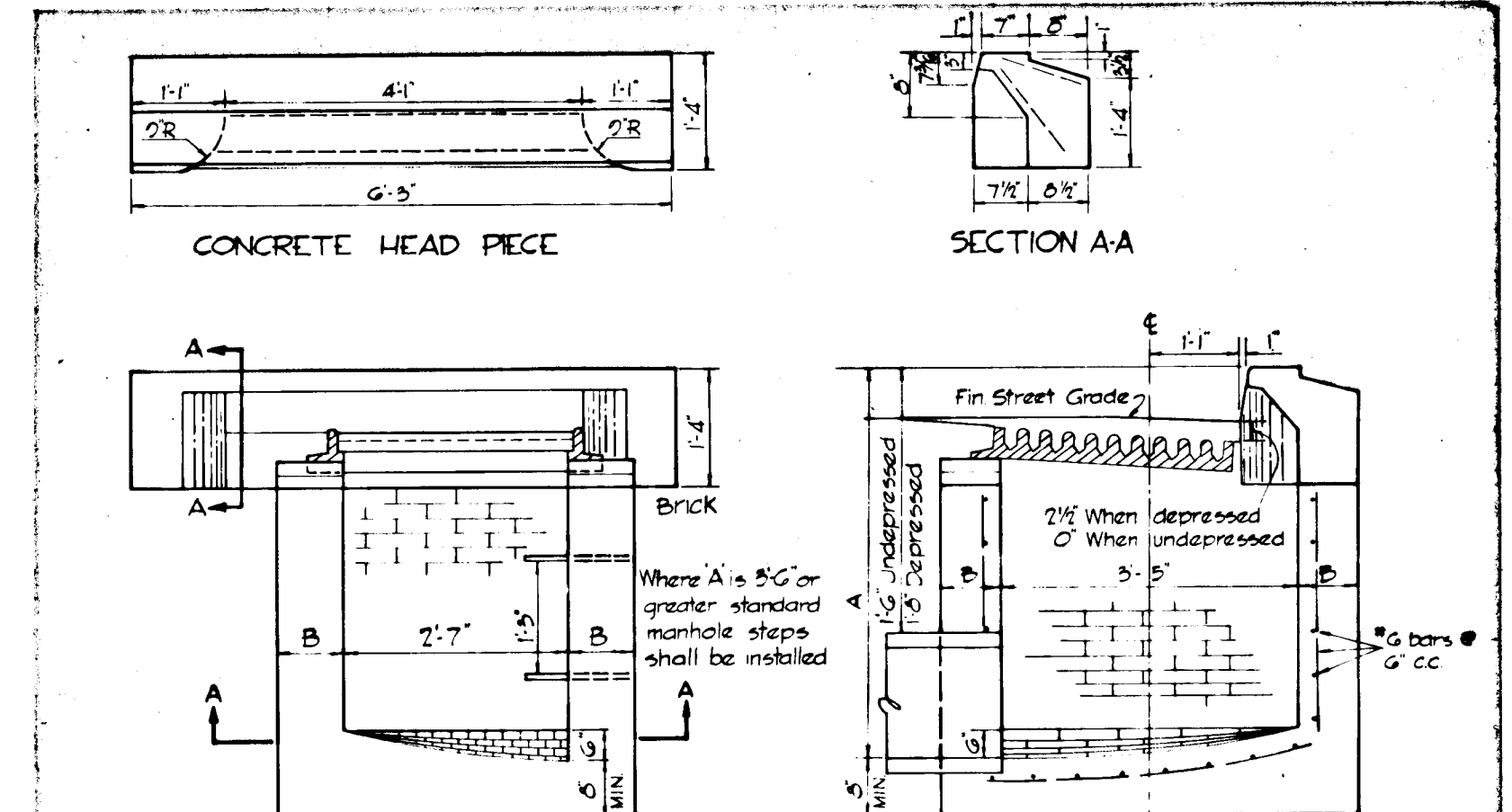
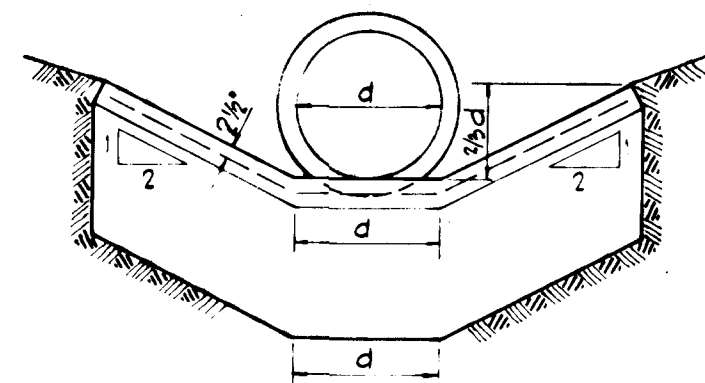


CURB TRANSITION

MOUNTABLE CURB to INLET HEAD PIECE



TYPICAL CONCRETE CHANNEL  
AND  
CUTOFF WALL  
NO SCALE



MODIFIED 'S' COMBINATION INLET  
NO SCALE

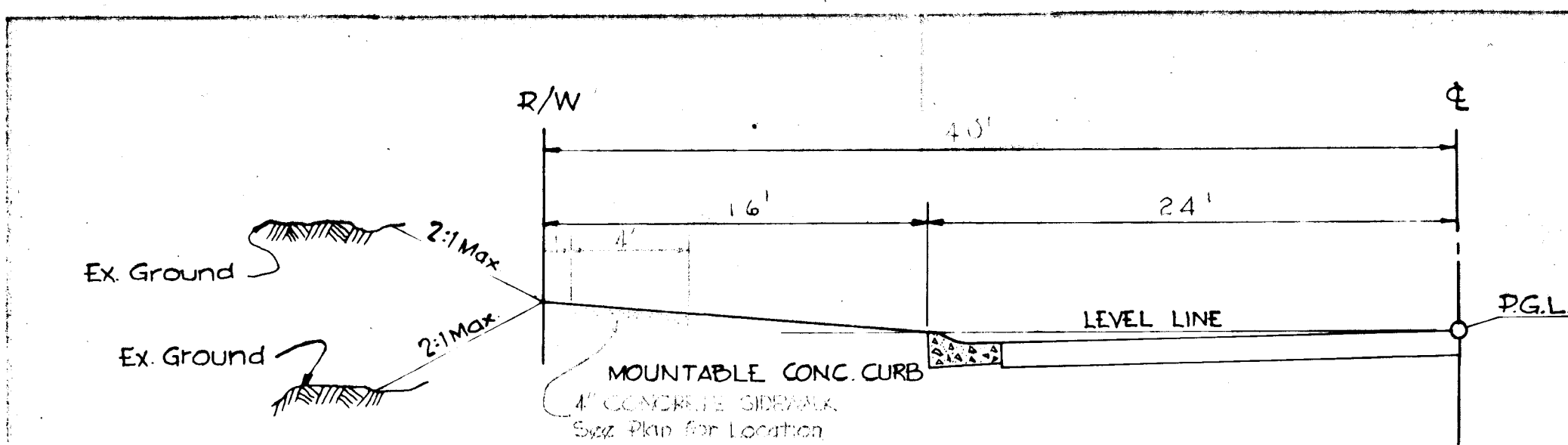
1. INLETS MAY BE CONSTRUCTED OF BRICK OR REINFORCED CONCRETE. SIZE, TYPE & DIRECTION OF INLET CONNECTION WILL VARY TO SUIT CONDITIONS.
2. THE INVERT SHALL BE BRICK OR CLASS 'A' CONCRETE.
3. B-12 WHERE A IS 7' OR LESS.
4. B-12 WHERE A IS 7' TO 11'.
5. TOP 4" OF WALLS SHALL BE MASONRY. ADDITIONAL BRICK SHALL BE USED TO BRING THE GRATE TO GRADE IF REQUIRED.
6. REINFORCEMENT REQUIRED ON OUTSIDE AS WELL AS INSIDE OF WALLS WHEN A IS GREATER THAN 7' SPACING SAME AS INSIDE WALL.
7. PLACE 1/2" EXPANSION MATERIAL OF SAME TYPE APPROVED FOR PAVEMENT, BETWEEN THE FRAME AND ABUTTING RIGID PAVEMENT AND BETWEEN ENDS OF INLET CURB AND NORMAL CONCRETE CURB.

BITUMINOUS CONCRETE SURFACE	1 1/2"	BAND C-3	FINAL PHASE
BITUMINOUS CONCRETE BINDER	1 1/2"	BAND A-3	
BITUMINOUS CONCRETE BASE PLACED IN ONE COURSE	5"	BAND C-2 OR G-3	FIRST PHASE

CLEARING AND GRADING ARTICLE C-1  
SUBGRADE ARTICLE C-2  
BASE COURSE ARTICLE C-2 or C-3  
BINDER COURSE ARTICLE C-31  
SURFACE COURSE ARTICLE C-31

NOTE:  
PAVEMENT TO BE CONSTRUCTED IN ACCORDANCE WITH THE HOWARD COUNTY ROAD CONSTRUCTION CODE AND SPECIFICATIONS DWG D-113 PG 165

8" PAVEMENT DETAIL  
NO SCALE



8' O.R.O.W. TYPICAL HALF-SECTION  
NO SCALE

APPROVED  
PLANNING COMMISSION  
OF HOWARD COUNTY

12/26/68 J.A.C. - RB

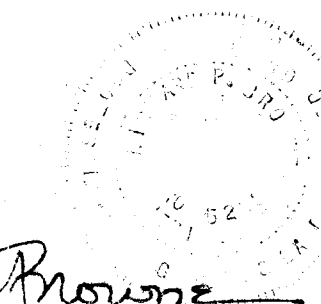
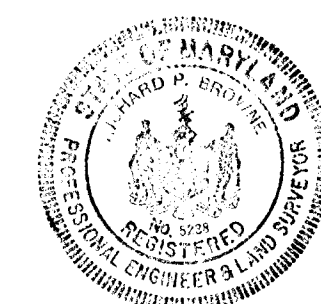
BROWNE-PANDULLO & ASSOCIATES  
ENGINEERS  
COLUMBIA, MARYLAND

Rev Date Rev No Revision Description

**COLUMBIA**  
M A R Y L A N D  
H O W A R D C O U N T Y  
OWNER AND DEVELOPER  
HOWARD RESEARCH AND DEVELOPMENT CORP.  
THE VILLAGE OF CROSS KEYS - BALTIMORE, MARYLAND 21210

PROJECT AREA  
VILLAGE OF OAKLAND MILLS  
SECTION 2 VILLAGE CENTER AREA 2  
PROJECT TITLE  
STEVENS FOREST ROAD

Des By J.S. Scale AS SHOWN Dwg No 2001  
Dwn By F.T. J.B. Date AUG. 2, 1968 C.C.F. No  
Chk By Approved



Richard Browne

TEMPLATE 1-1-7  
 REVISIONS  
 NUMBERED  
 IN THE  
 MARGIN  
 DATE OF  
 REVISION  
 TO BE  
 INDICATED  
 IN THE  
 MARGIN  
 APPROVED  
 BY THE  
 ENGINEER