

§ CURVE DATA
 Sta. 4+27.58 to Sta. 4+58.47
 R = 30.00', L = 30.89'
 $\Delta = 59^{\circ}00'00''$, T = 16.97'
 Chd. = N 74° 08' 00" W - 29.55'

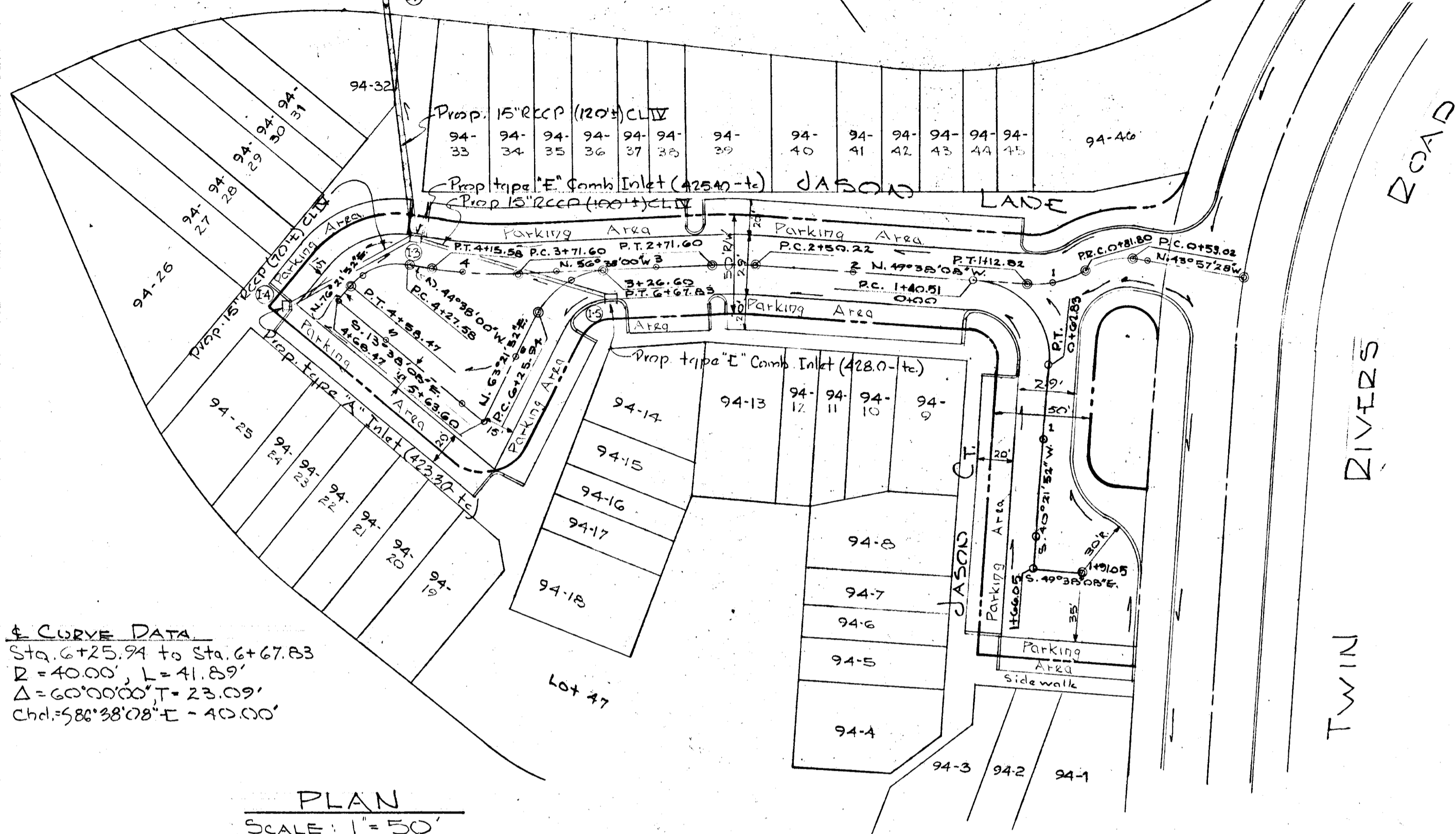
§ CURVE DATA
 Sta. 3+71.60 to Sta. 4+15.58
 R = 210.00', L = 43.98'
 $\Delta = 12^{\circ}00'00''$, T = 22.07'
 Chd. = N 60° 38' 00" W - 43.90'

§ CURVE DATA
 Sta. 2+50.22 to Sta. 2+71.60
 R = 175.00', L = 21.38'
 $\Delta = 07^{\circ}00'00''$, T = 10.70'
 Chd. = N 53° 08' 08" W - 21.37'

§ CURVE DATA
 Sta. 0+53.02 to Sta. 0+81.80
 R = 40.00', L = 28.78'
 $\Delta = 41^{\circ}13'32''$, T = 15.05'
 Chd. = N 64° 34' 14" W - 28.16'

§ CURVE DATA
 Sta. 6+25.94 to Sta. 6+67.83
 R = 40.00', L = 41.89'
 $\Delta = 60^{\circ}00'00''$, T = 23.09'
 Chd. = S 88° 38' 08" E - 40.00'

§ CURVE DATA
 Sta. 0+00.00 to Sta. 0+62.83
 R = 40.00', L = 62.83'
 $\Delta = 90^{\circ}00'00''$, T = 40.00'
 Chd. = S 04° 38' 08" E - 56.57'

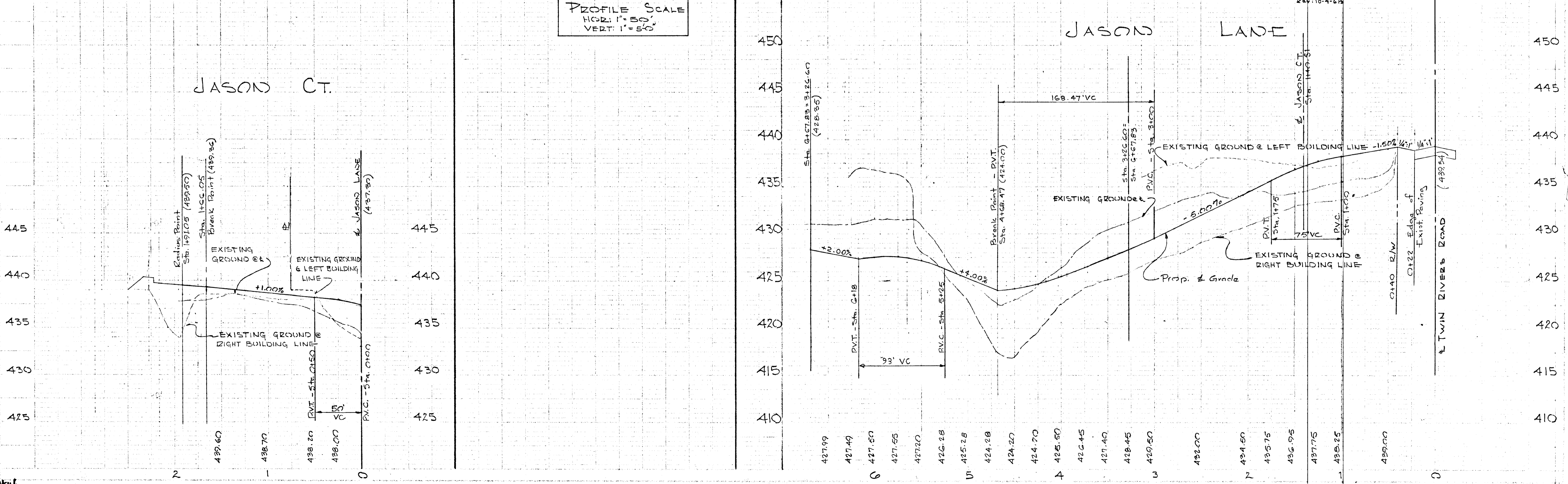


PLAN
 SCALE: 1" = 50'

11 July 1968
 PROFESSIONAL ENGINEER & SURVEYOR
 STATE OF MARYLAND
 Carl J. Schaefer
 Reg. No. 2351

APPROVED: HOWARD COUNTY PLANNING COMM.
J.H. Clawson 9-10-68
 Chief Engineer Date
 APPROVED: HOWARD COUNTY ROADS DEPT.
Norman S. O'Neil 9-9-68
 Roads Superintendent Date
 APPROVED: HOWARD COUNTY METROPOLITAN COMM.
W.O. Gilbert 9-9-68
 Chief Engineer Date
OWNED AND DEVELOPER
 THE JAMES P. RYAN CO.
 10221 WINCOPIN CIRCLE
 COLUMBIA, MARYLAND.
PURDUM
WESCHKE
 ENGINEERS AND LAND SURVEYORS
 24 PARK AVE. ELLICOTT CITY, MARYLAND.
PLAN & PROFILE: JASON LANE & COURT
 RESUBDIVISION OF LOTS 94-95 - SECTION N°5 'VILLAGE OF WILDE LAKE' "COLUMBIA"
 5TH ELECTION DISTRICT - HOWARD COUNTY, MD.
 JULY 11, 1968 - SCALE: AS SHOWN
 Rev. 8-2-68 Rev. 10-4-68
 SHEET 2 OF 3

APPROVED
 PLANNING COMMISSION
 OF HOWARD COUNTY
 DATE



PROFILE SCALE
 HOR: 1" = 50'
 VERT: 1" = 5.0'

