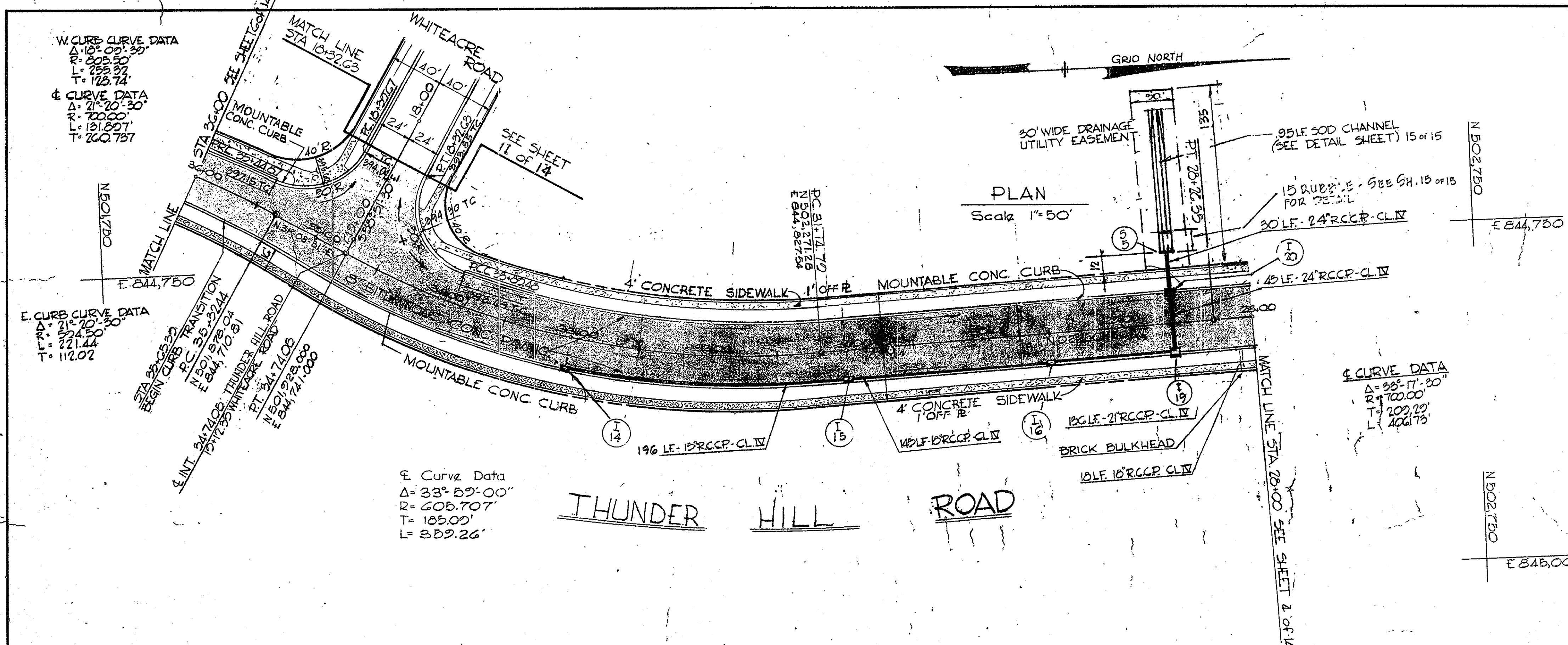


17-2-1-68427

PLAN	SURVEYED	BY	DATE
	PLOTTED		
	GRADES CHECKED		
	ALIGNMENT CHECKED		
	STRUCTURE NOTATION CHECKED		
	NO.		

PROFILE	SURVEYED	BY	DATE
	PLOTTED		
	GRADES CHECKED		
	STRUCTURE NOTATION CHECKED		
	NO.		



NO.	TYPE	LOCATION	INV. IN	INV. OUT	T.C.P. ELEV.	REMARKS
I-14	DBL. S COMBINATION	@ STA. 29+00 - 22.25' LT.	364.44	369.76		SEE HO. CO. STD. DETAILS
I-15	"	@ STA. 31+00 - 22.25' LT.	375.00	378.78	380.24	DRWG. D-99
I-16	"	@ STA. 29+50 - 22.25' LT.	372.46	372.21	377.67	PAGE 124
I-19	"	@ STA. 28+58 - 22.25' LT.	370.77	370.52	377.08	"
I-20	"	@ STA. 28+58 - 22.25' RT.	369.95	369.18	377.08	"
G-2	STD. TYPE C ENDWALL	AS SHOWN -		368.55		SEE HO. CO. STD. DETAILS DRWG. D-92 PAGE 107

APPROVED
PLANNING COMMISSION
DATE 10/24/68
JTC

BROWNE-PANDULLO & ASSOCIATES
ENGINEERS
COLUMBIA, MARYLAND

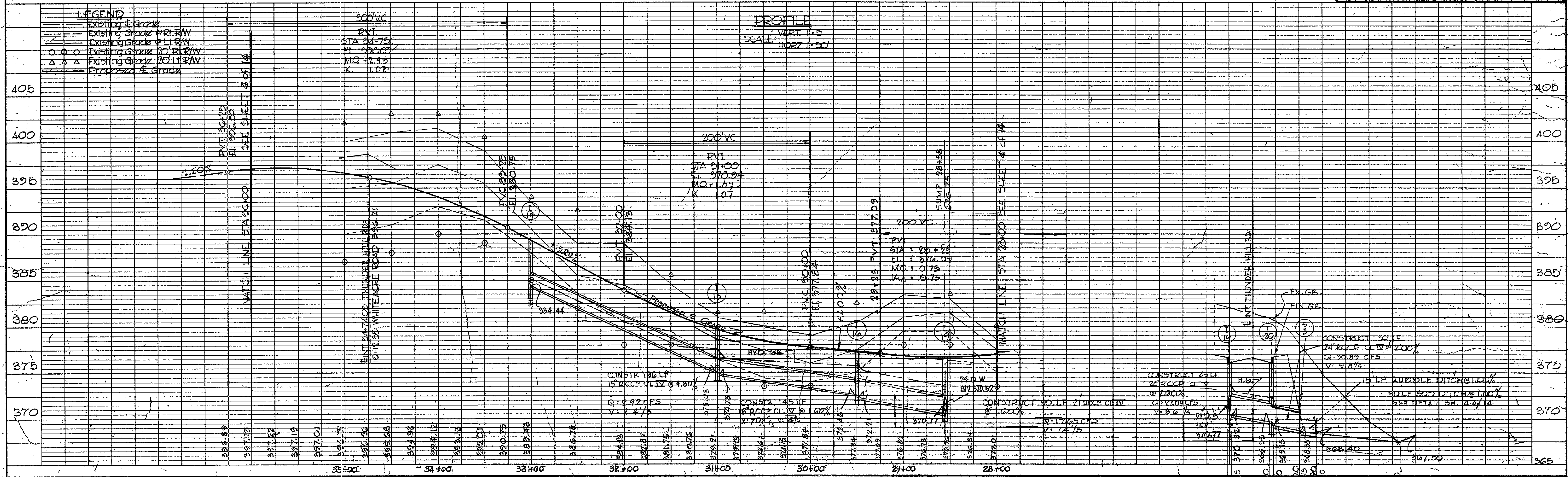
Rev Date Rev No Revision Description

COLUMBIA
M A R Y L A N D
6TH ELECTION DISTRICT HOWARD COUNTY
OWNER AND DEVELOPER
HOWARD RESEARCH AND DEVELOPMENT CORP.
THE VILLAGE OF CROSS KEYS - BALTIMORE, MARYLAND 21210

PROJECT AREA
VILLAGE OF OAKLAND MILLS
SECTION 2 - VILLAGE CENTER - AREA 1

PROJECT TITLE
THUNDER HILL ROAD
PLAN & PROFILES

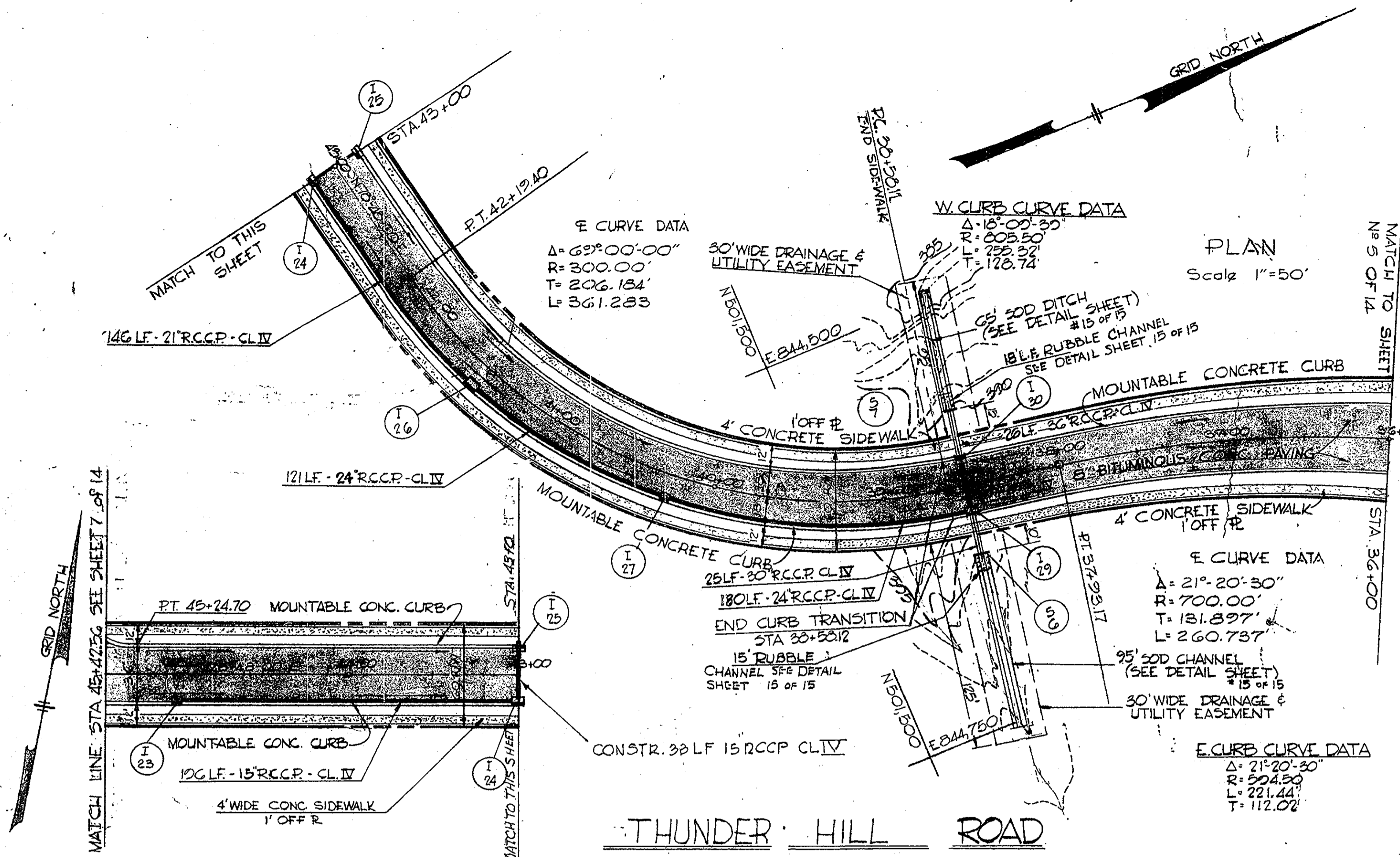
Des By T.S. Scale AS NOTED Dwg. No. 5 of 14
Dwn By F.T. & J.E. Date APRIL 4, 1968 C.C.F. No.
Chk By T.S. Approved D-2-1-68427



2-1-68-1-1-2-17

STORM DRAINAGE STRUCTURE SCHEDULE						
NO.	TYPE	LOCATION	INV. IN	INV. OUT	T.C.P. ELEV.	REMARKS
I-23	DBL 'S' COMBINATION	± STA 45+00 - 16.75' Lt.	394.27	393.23	401.62	STD. DWG. D-22 P. 154
I-24	" " " "	± STA 45+00 - 16.75' Lt.	394.27	393.77	399.62	" " " "
I-25	Mod 'S' COMB (S' GRATE)	± STA 45+00 - 16.75' Lt.	394.93	394.93	399.62	SEE DETAIL SHT. 13
I-26	DBL 'S' COMBINATION	± STA 41+30 - 16.75' Lt.	392.31	392.06	398.10	STD. DWG. D-22 P. 154
I-27	" " " "	± STA 40+25 - 16.75' Lt.	390.85	390.65	396.56	" " " "
I-28	Mod 'S' COMB (S' GRATE)	± STA 38+47 - 16.75' Lt.	387.95	386.95	394.70	SEE DETAIL SHT. 13
I-30	" " " "	± STA 38+47 - 16.75' Lt.	386.29	386.09	394.79	" " " "
5-6	STD. TYPE 'C' ENDWALL	AS SHOWN	387.95			HOWARD Co. STD.
5-7	" " " "	AS SHOWN		385.97		DWG. D-52, P. 107

PLAN	DATE	BY
NOTED		
FLIPPED		
CHECKED		
RT. OF WAY		
CHECKED		
NO.		



APPROVED
 PLANNING COMMISSION
 DATE 12/1/68
J.P.C.

BROWNE-PANDULLO & ASSOCIATES
 ENGINEERS
 COLUMBIA, MARYLAND

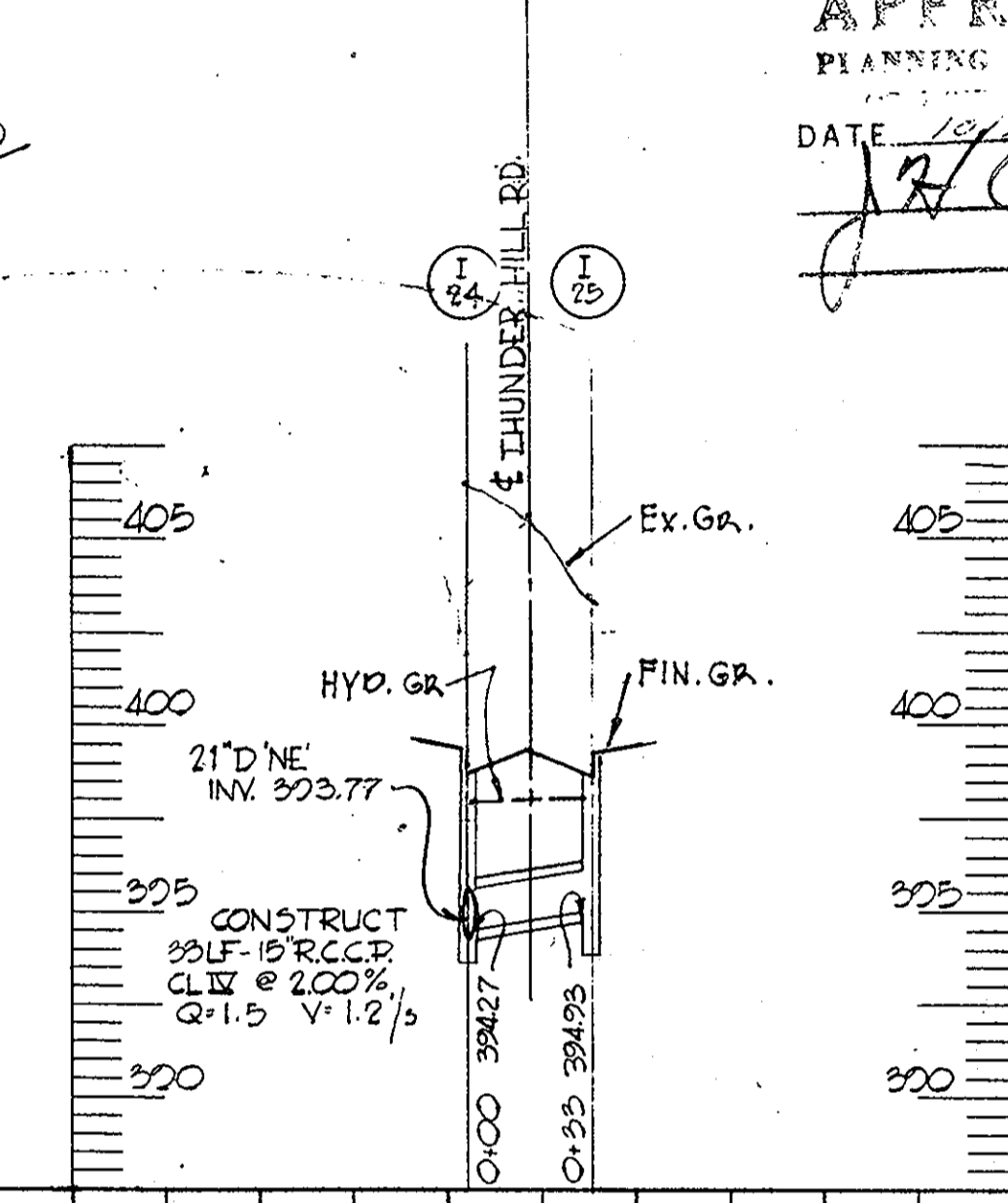
Rev Date Rev No Revision Description

COLUMBIA
 MARYLAND
 6TH ELECTION DISTRICT - HOWARD COUNTY
 OWNER AND DEVELOPER
 HOWARD RESEARCH AND DEVELOPMENT CORP.
 THE VILLAGE OF CROSS KEYS - BALTIMORE, MARYLAND 21210

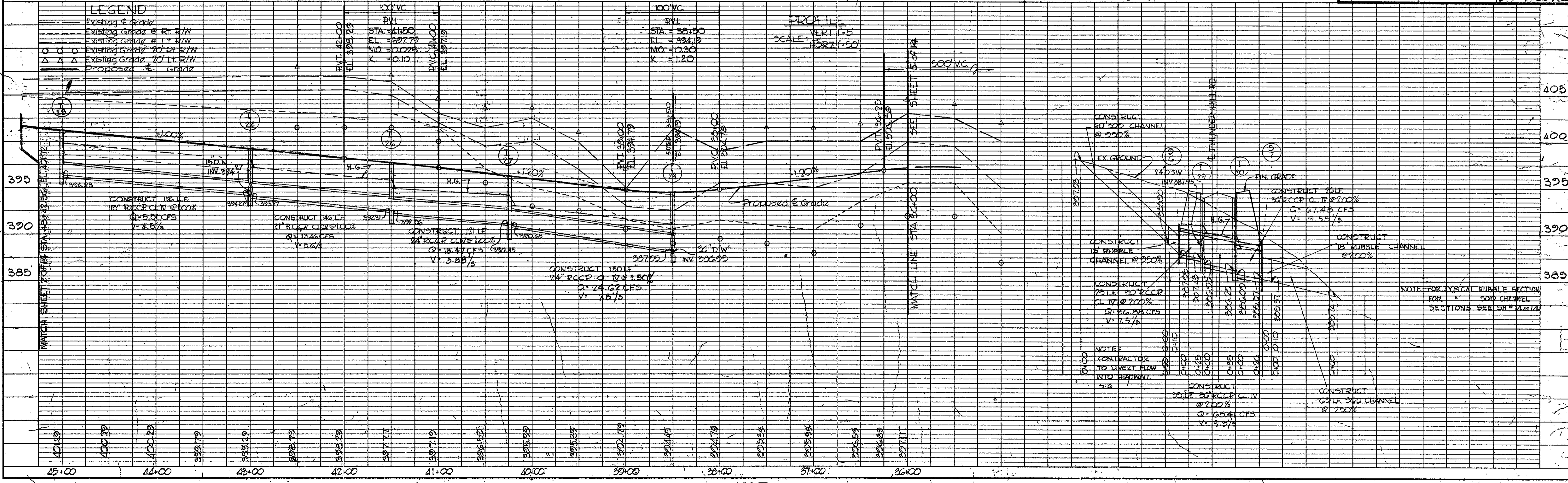
PROJECT AREA
VILLAGE OF OAKLAND MILLS
 SECTION 2 - VILLAGE CENTER - AREA 1

PROJECT TITLE
THUNDER HILL ROAD
 PLAN & PROFILE

Des By T.S. Scale AS NOTED Dwg. No 6 OF 14
 Dwn By F.T. & J.B. Date APRIL 4, 1968 C.C.F. No
 Ck'd By T.S. Approved D-2-1-68428



PROFILE	DATE	BY
NOTED		
FLIPPED		
CHECKED		
B. AS NOTED		
STRUCTURE NOTATIONS CHECKED		
NO.		



89

1-17-68 430

39

DATE	
BY	
REVISIONS	
1	NOTED
2	NOTED
3	NOTED
4	NOTED
5	NOTED
6	NOTED
7	NOTED
8	NOTED
9	NOTED
10	NOTED

DATE	
BY	
REVISIONS	
1	NOTED
2	NOTED
3	NOTED
4	NOTED
5	NOTED
6	NOTED
7	NOTED
8	NOTED
9	NOTED
10	NOTED

NO.	TYPE	LOCATION	INV. IN	INV. OUT	T.C.P. ELEV.	REMARKS
1-9	STD. CL. 6' CORR. INLET (18" GR. IN)	STA 10+40 - 22.25' RT.	379.54	387.88		SEE NO. G. STD. DETAILS
1-10	"	STA 11+75 - 22.25' RT.	380.95	386.66		DRWG. D-99, PAGE 154
1-10	Mod 5 Comp. (Single Grate)	STA 11+30 - 22.25' LT.	377.19	386.62		SEE DETAIL 5H.13.
2-11	STD. TYPE C ENDWALL	AS SHOWN	378.17			SEE NO. G. STD. DETAILS
2-11	"	"	374.20			DRWG. D-92, PAGE 107
2-12	"	"	382.75			

APPROVED
 PLANNING COMMISSION
 OF THE CITY OF BALTIMORE
 DATE 10/24/68
 J.A.C.F.

BROWNE-PANDULLO & ASSOCIATES
 ENGINEERS
 COLUMBIA, MARYLAND

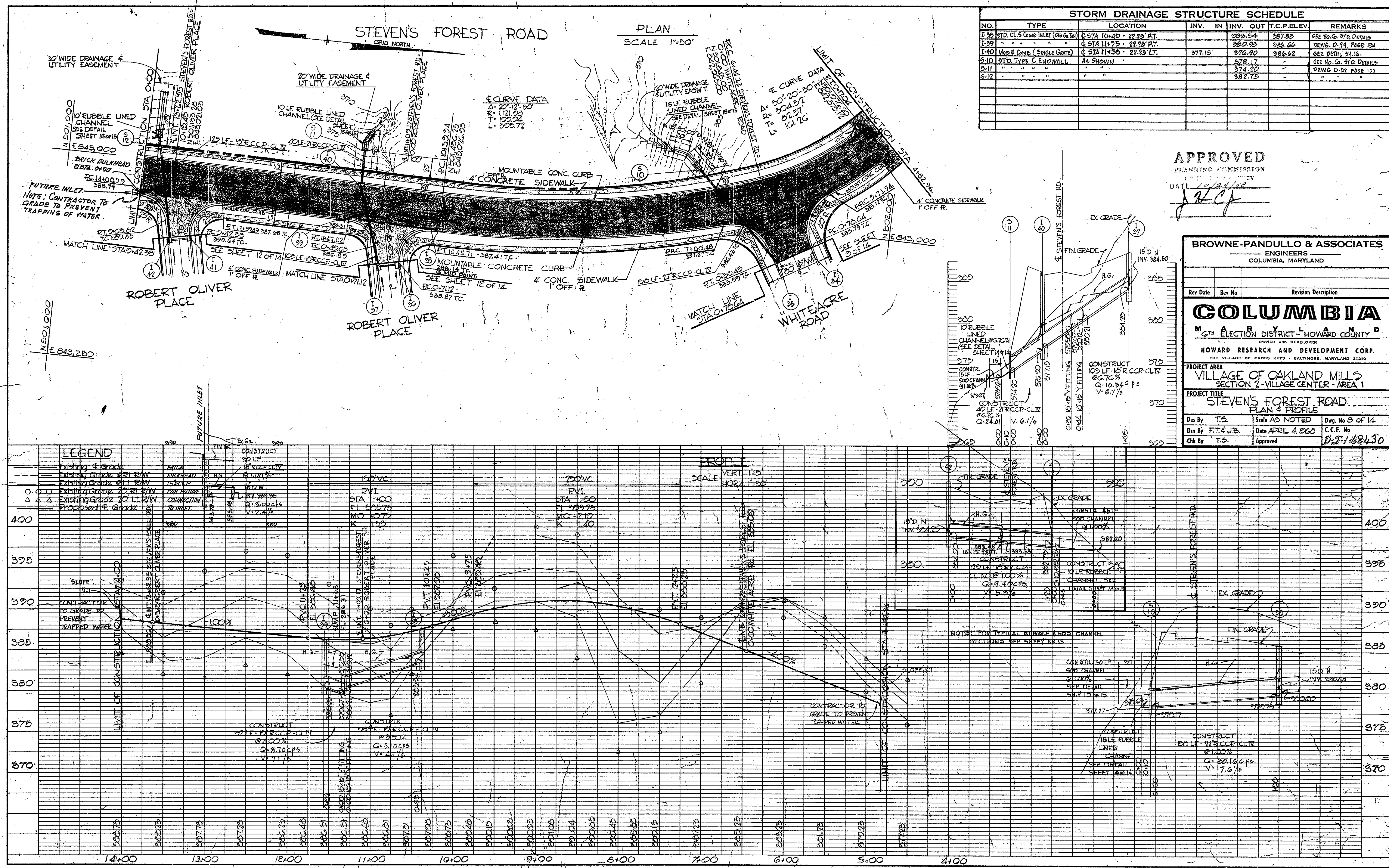
Rev Date	Rev No	Revision Description

COLUMBIA
 4th ELECTION DISTRICT - HOWARD COUNTY
 OWNER AND DEVELOPER
 HOWARD RESEARCH AND DEVELOPMENT CORP.
 THE VILLAGE OF CROSS KEYS - BALTIMORE, MARYLAND 21210

PROJECT AREA
 VILLAGE OF OAKLAND MILLS
 SECTION 2 - VILLAGE CENTER - AREA 1

PROJECT TITLE
 STEVENS FOREST ROAD
 PLAN & PROFILE

Des By T.S. Scale AS NOTED Dwg. No 8 OF 14
 Dm By FT & J.B. Date APRIL 4, 1968 C.C.F. No
 Chk By T.S. Approved D-9-1-68430



104,800-1-7-71

STORM DRAINAGE STRUCTURE SCHEDULE						
NO.	TYPE	LOCATION	INV. IN	INV. OUT	T.C.P. ELEV.	REMARKS
I-23	STD. 5 COMP. (10' dia. manhole)	STA. 2+50 22+25 RT.	282.91	282.66	282.82	SEE HO. CO STD
I-23A	STD. 5 COMP. "	STA. 5+50 22+25 RT.	285.07	284.87	284.88	DETAILS DRWG D-99
I-24	STD. 5 COMP. "	STA. 0+80.00 22+25 LT.		281.40	286.19	PAGE 154.
I-25	STD. 5 COMP. "	STA. 0+81.00 22+25 RT.	280.50	279.75	280.14	"

APPROVED
 PLANNING COMMISSION
 DATE 10/24/68
 JAC

BROWNE-PANDULLO & ASSOCIATES
 ENGINEERS
 COLUMBIA, MARYLAND

Rev Date Rev No Revision Description

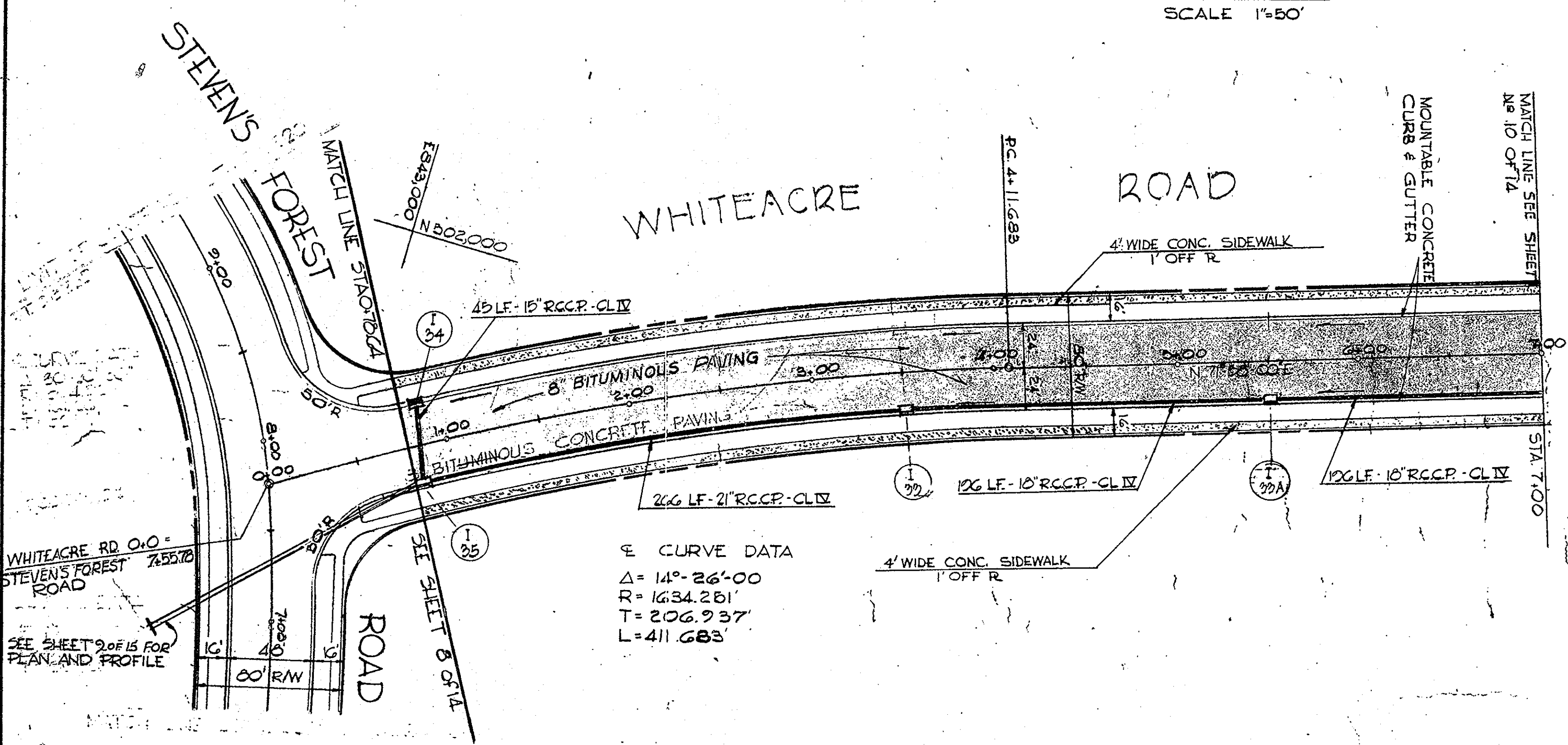
COLUMBIA
 MARYLAND
 6TH ELECTION DISTRICT HOWARD COUNTY
 OWNER AND DEVELOPER
 HOWARD RESEARCH AND DEVELOPMENT CORP.
 THE VILLAGE OF CROSS KEYS - BALTIMORE, MARYLAND 21210

PROJECT AREA
 VILLAGE OF OAKLAND MILLS
 SECTION 2 VILLAGE CENTER AREA-1

PROJECT TITLE
 WHITEACRE ROAD
 PLAN & PROFILE

Des By TS Scale AS SHOWN Dwg. No 9 OF 14
 Dwn By FT Date 4 APR. 1968 C.C.F. No
 Chk By TS Approved D-2-1-68431

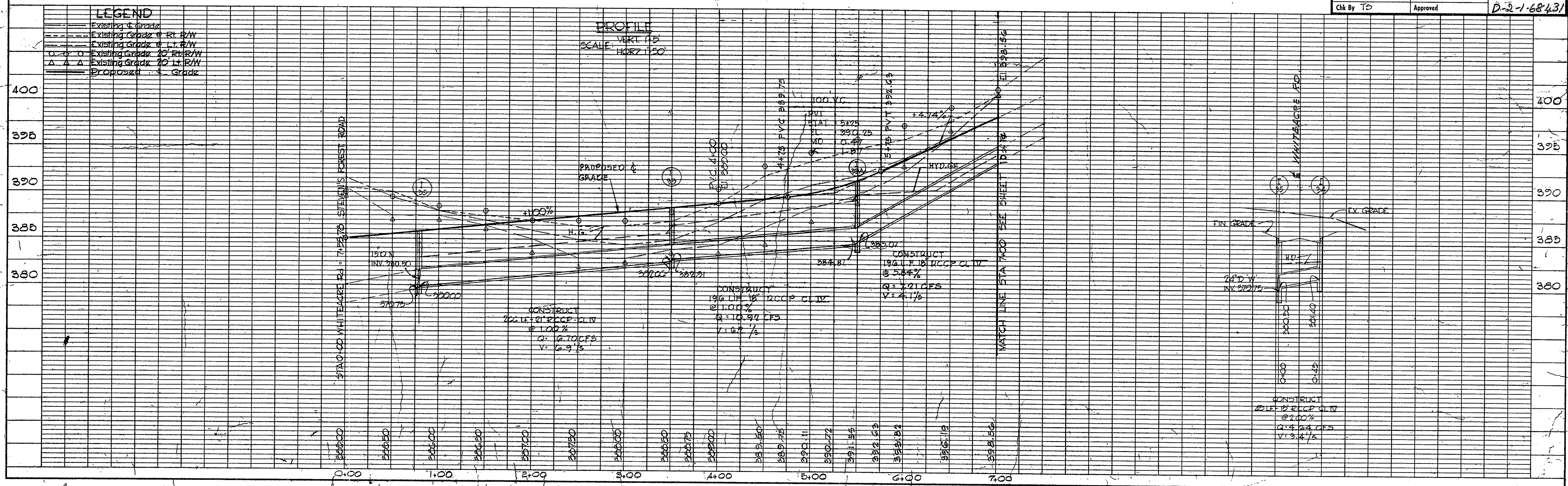
PLAN
 SCALE 1"=50'



☉ CURVE DATA
 $\Delta = 14^{\circ} 26' 00''$
 $R = 1634.261'$
 $T = 206.937'$
 $L = 411.683'$

PLAN
 SURVEYED BY
 DATE
 NOTE BOOK NO.
 ALIGNMENT CHECKED
 RT. OF WAY CHECKED

PROFILE
 SURVEYED BY
 DATE
 NOTE BOOK NO.
 GRADES CHECKED
 B. M. NOTED
 STRUCTURE NOTINGS CH'NO.



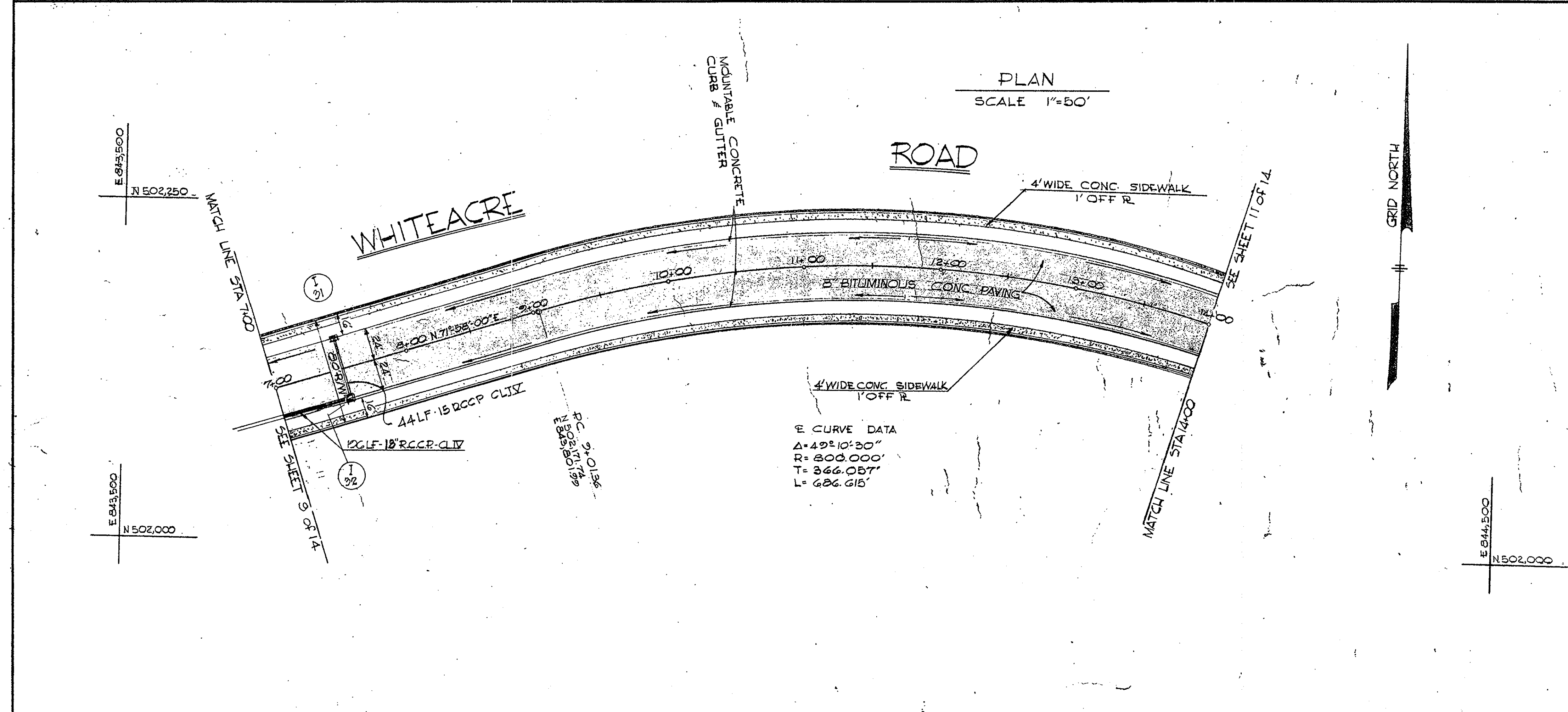
89

D-2-1-68432

PLAN	DATE	BY
NO.		
NO.		
NO.		

PROFILE	DATE	BY
NO.		
NO.		
NO.		

STORM DRAINAGE STRUCTURE SCHEDULE						
NO.	TYPE	LOCATION	INV. IN	INV. OUT	T.C.P. ELEV.	REMARKS
1-31	Mod. COMB. 3' (3) GRATE	STA 7+50 - 22.25' Lt.		397.91	401.26	SEE DETAIL SH. 13
1-32	" " " " "	STA 7+50 - 22.25' Rt.	396.77	396.52	401.26	" " " "



APPROVED
 PLANNING COMMISSION
 DATE 10/24/68
[Signature]

BROWNE-PANDULLO & ASSOCIATES
 ENGINEERS
 COLUMBIA, MARYLAND

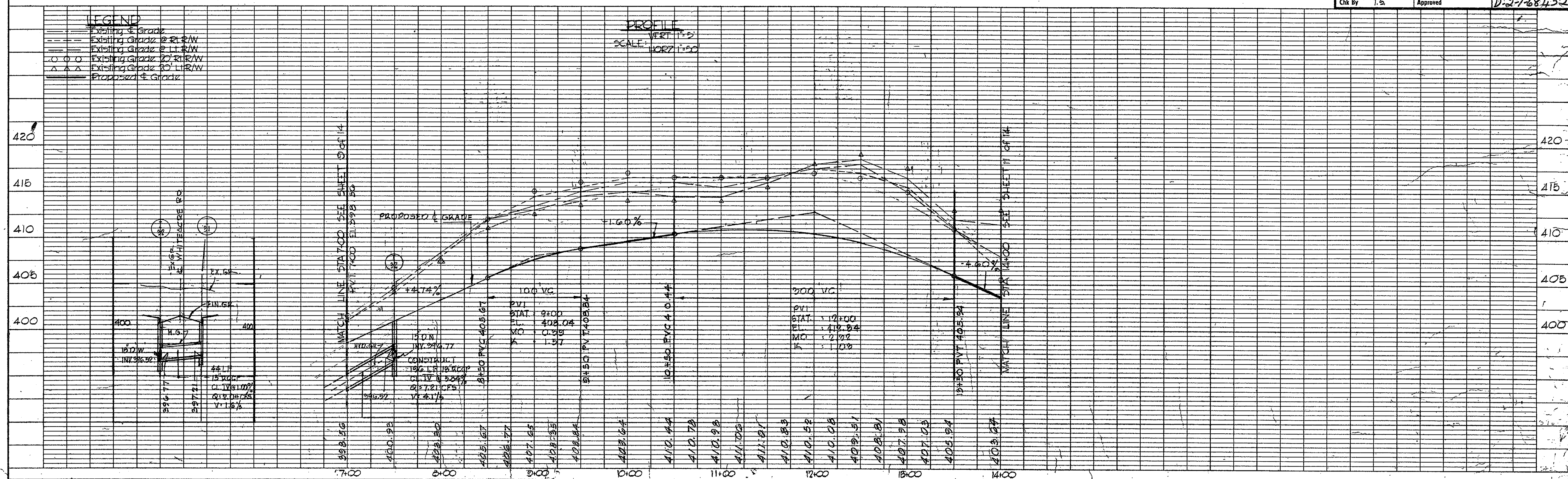
Rev Date Rev No Revision Description

COLUMBIA
 MARYLAND
 6TH ELECTION DISTRICT - HOWARD COUNTY
 OWNER AND DEVELOPER
 HOWARD RESEARCH AND DEVELOPMENT CORP.
 THE VILLAGE OF CROSS KEYS - BALTIMORE, MARYLAND 21210

PROJECT AREA
 VILLAGE OF OAKLAND MILLS
 SECTION 2 - VILLAGE CENTER - AREA 1

PROJECT TITLE
 WHITEACRE ROAD
 PLAN & PROFILE

Des By T.S. Scale AS SHOWN Des. No 10 of 14
 Dwn By F.T. & J.B. Date APRIL 4, 1968 C.C.F. No
 Chk By T.S. Approved D-2-1-68432



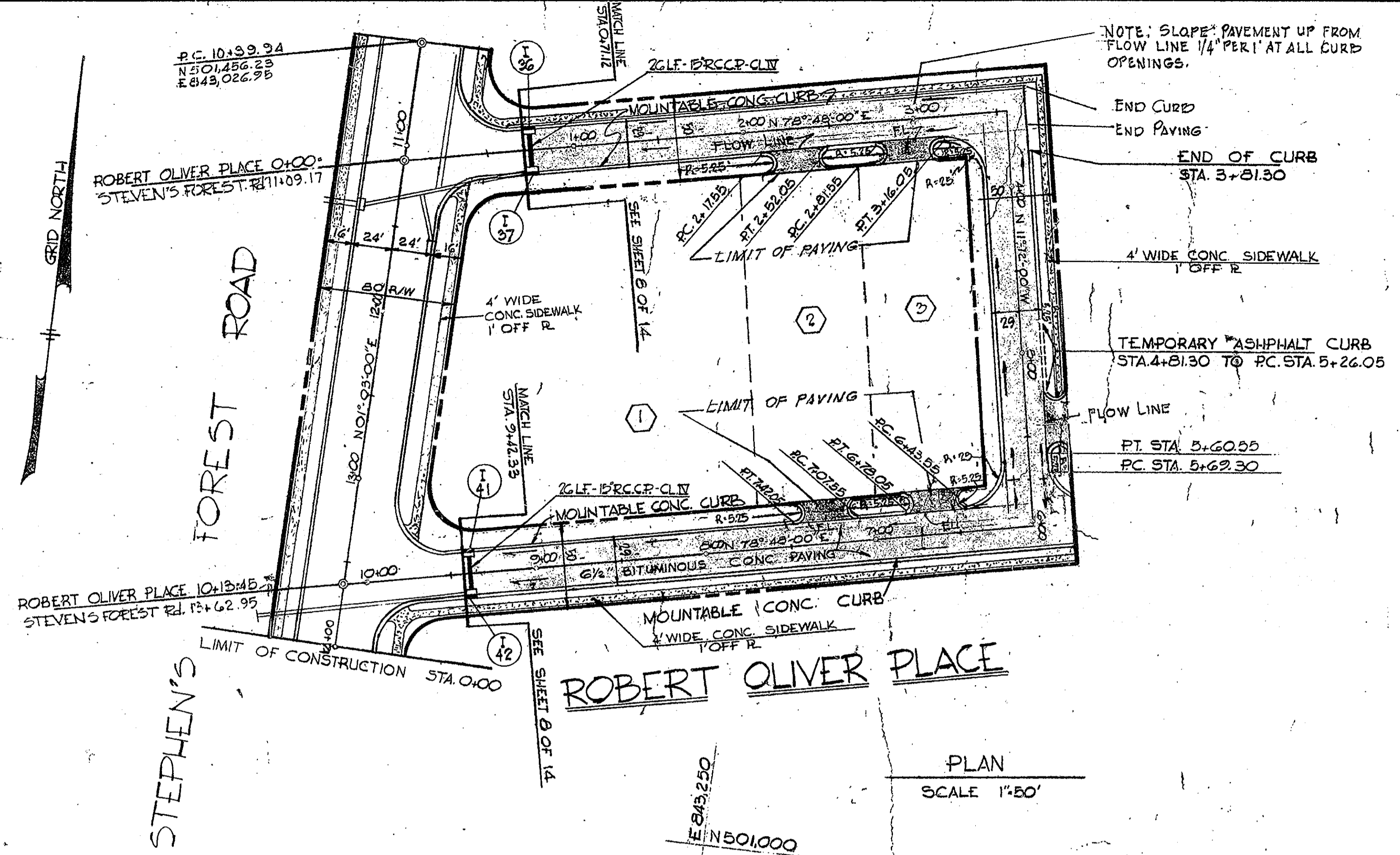
89

U-2-1-68434

PLAN	DATE	BY
SURVEYED		
ALIGNED		
CHECKED		
NO.		

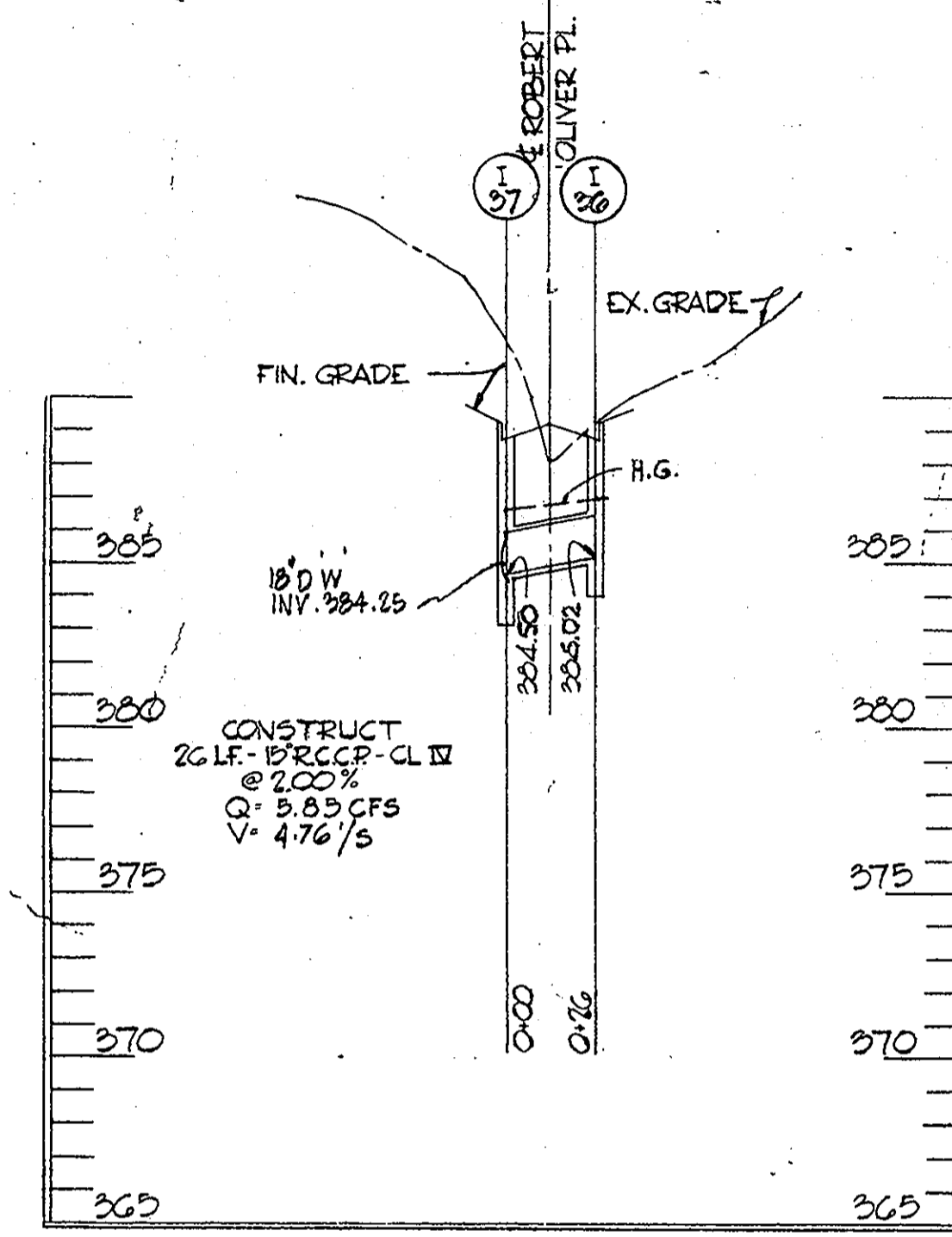
PROFILE	DATE	BY
SURVEYED		
GRADES CHECKED		
STRUCTURE NOTATION		
NO.		

89



NO.	TYPE	LOCATION	INV. IN	INV. OUT	T.C.P. ELEV.	REMARKS
I-36	6" D. CL. 5 COMB. INLET (26" GR. TUBING)	ST. 0+75 - 27.25 LT.		283.02	289.06	SEE HO. CO. STD. DETAILS
I-37	"	ST. 0+75 - 27.25 RT.	284.50	284.25	289.06	DRWG. D-99
I-41	"	ST. 9+40 - 27.25 RT.		284.77	291.05	PAGE-154
I-42	"	ST. 9+40 - 27.25 LT.	284.25	284.00	291.05	"

APPROVED
PLANNING COMMISSION
OF HOWARD COUNTY
DATE 10/24/68
J.W.C.



BROWNE-PANDULLO & ASSOCIATES
ENGINEERS
COLUMBIA, MARYLAND

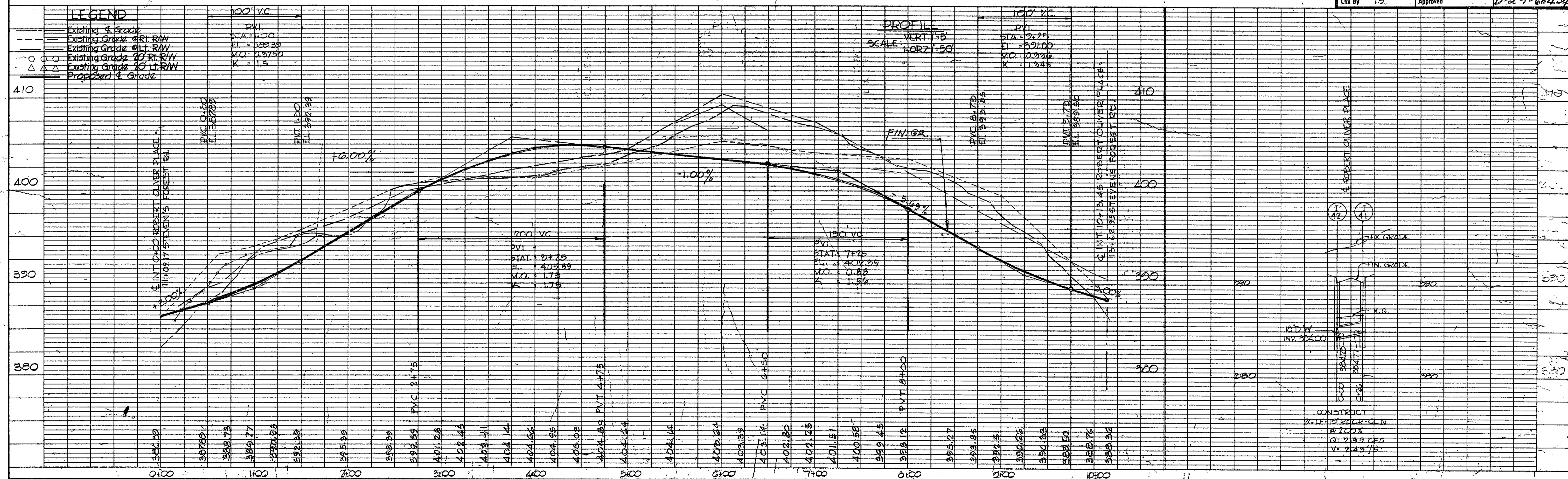
Rev Date	Rev No	Revision Description

COLUMBIA
M A R Y L A N D
6TH ELECTION DISTRICT - HOWARD COUNTY
OWNER AND DEVELOPER
HOWARD RESEARCH AND DEVELOPMENT CORP.
THE VILLAGE OF CROSS KEYS - BALTIMORE, MARYLAND 21210

PROJECT AREA
VILLAGE OF OAKLAND MILLS
SECTION 2-VILLAGE CENTER-AREA 1

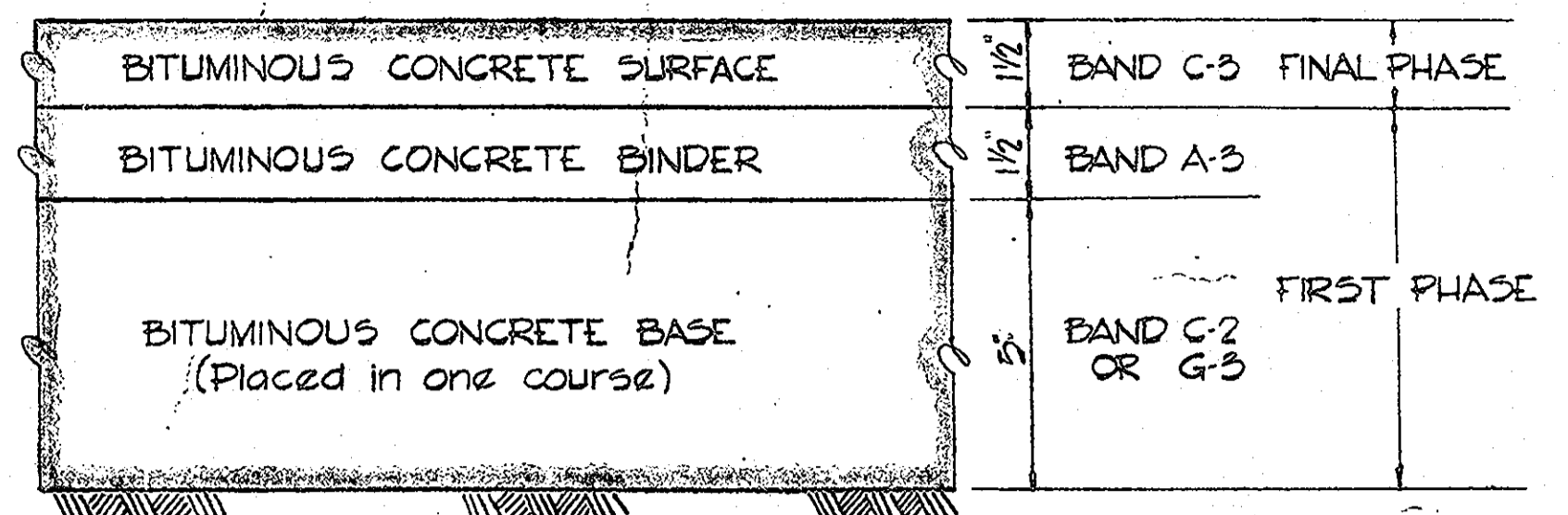
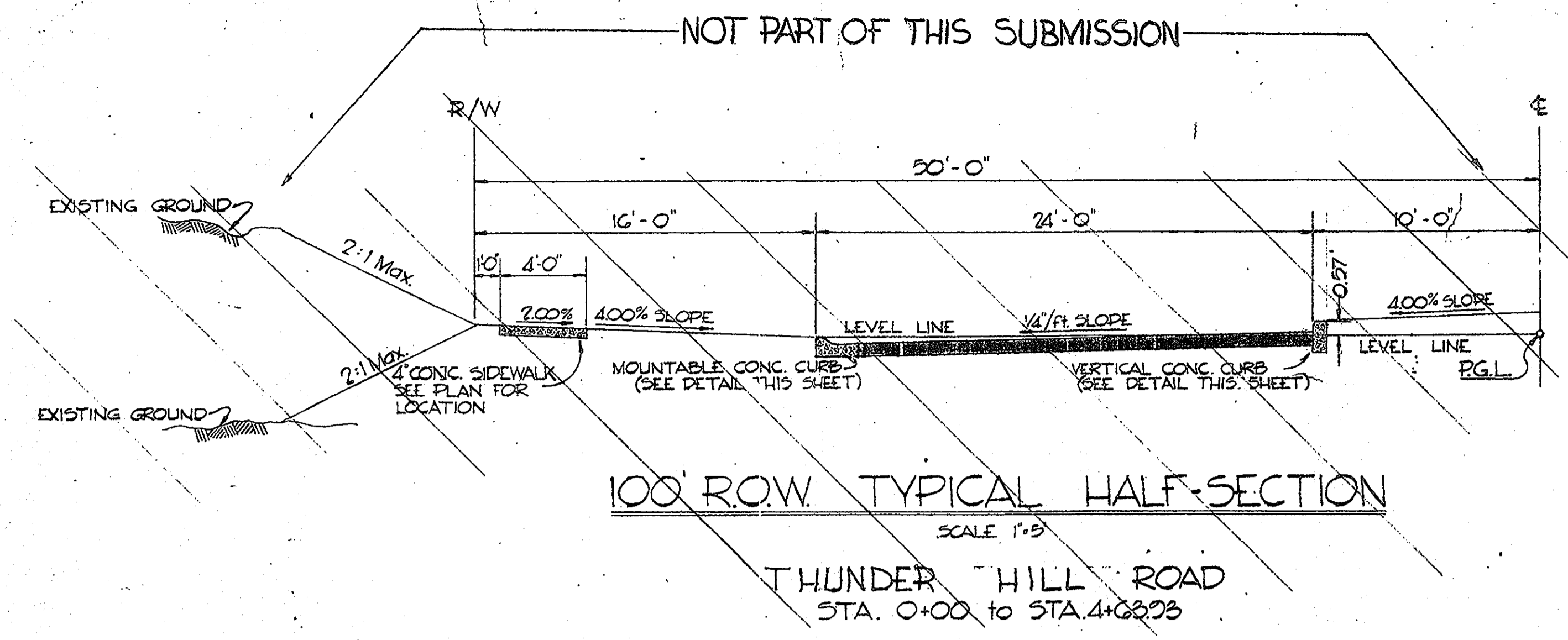
PROJECT TITLE
ROBERT OLIVER PLACE
PLAN & PROFILE

Des By T.S. Scale AS NOTED Dwg. No 12 of 14
Dwn By F.T. & J.B. Date APRIL 4, 1968 C.C.F. No
Chk By T.S. Approved



D-2-1-68435

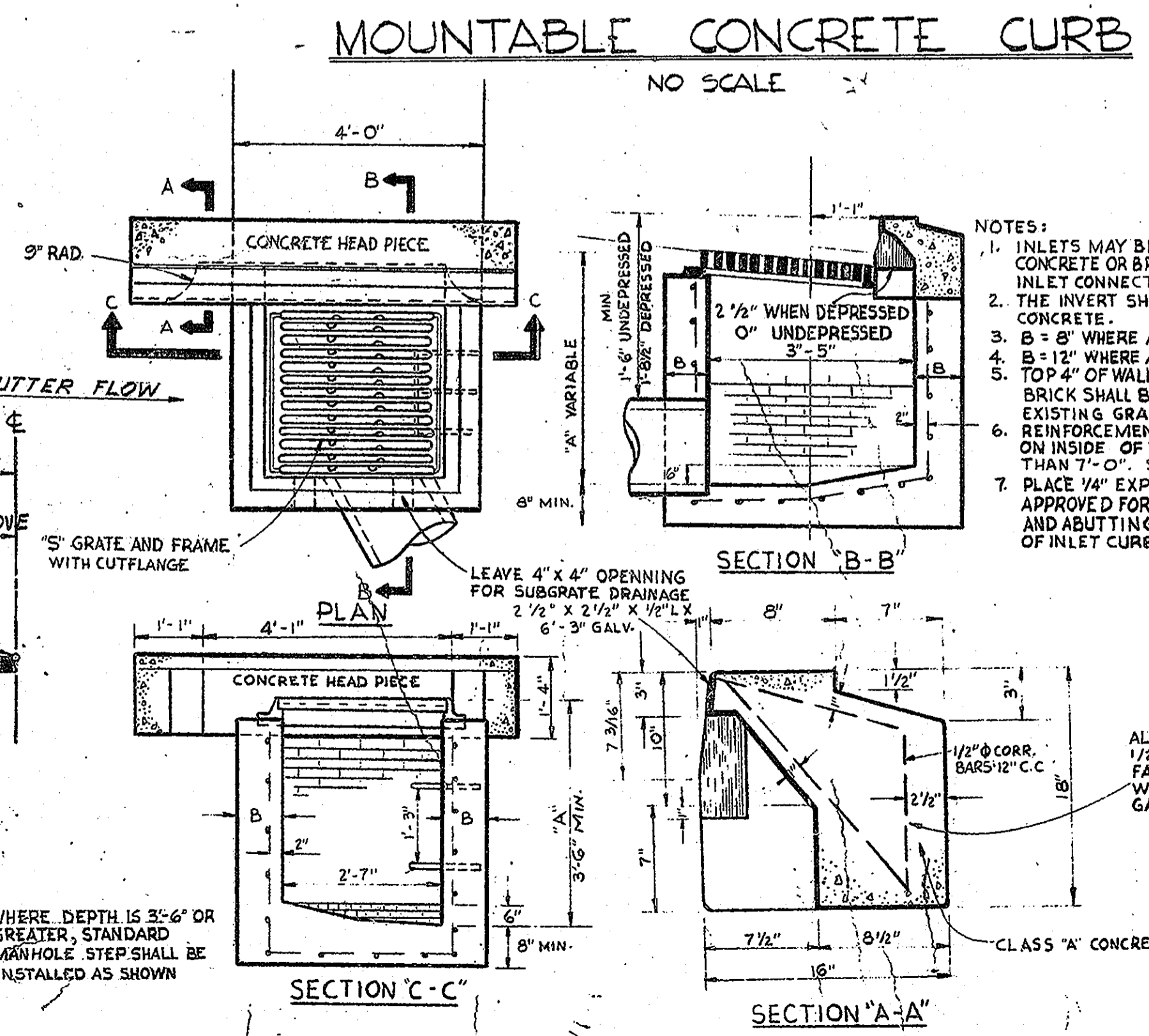
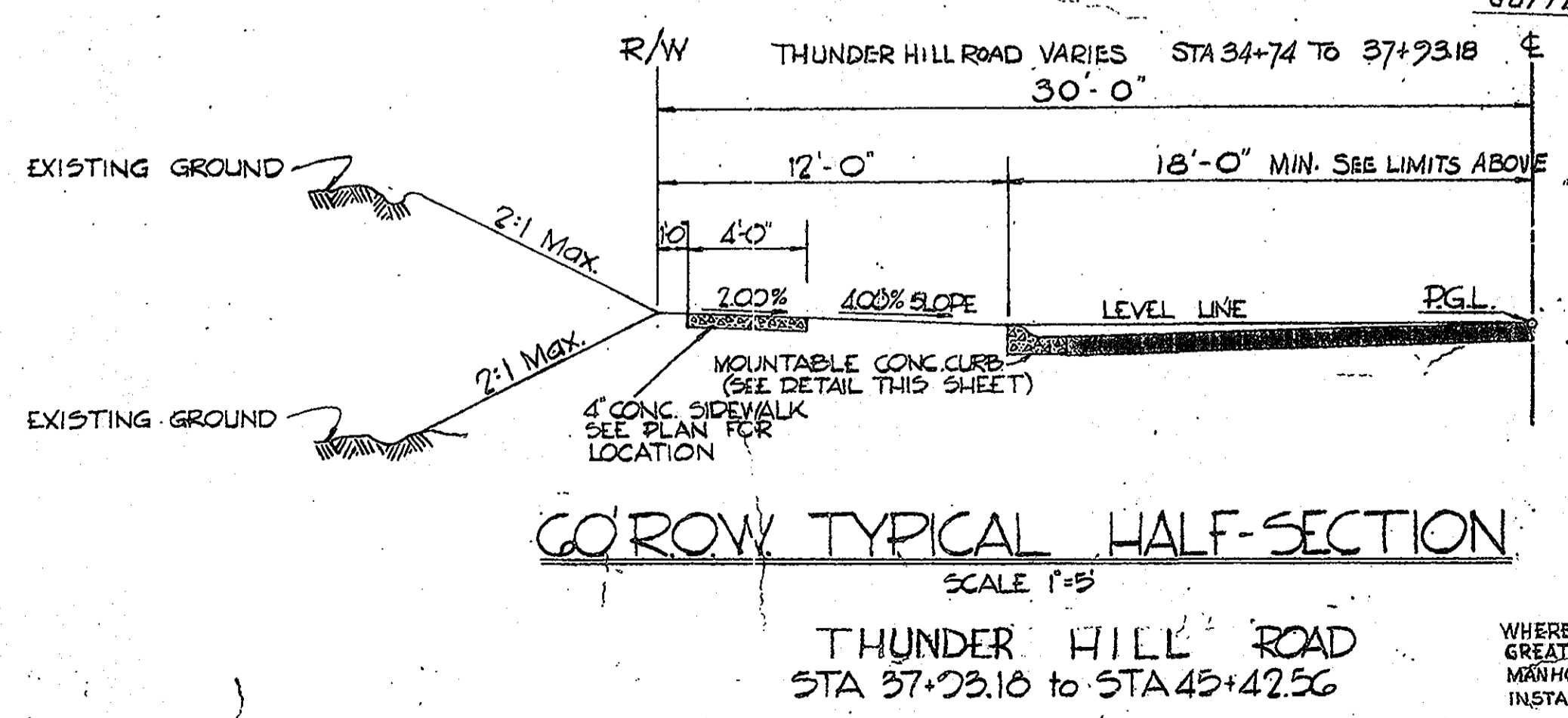
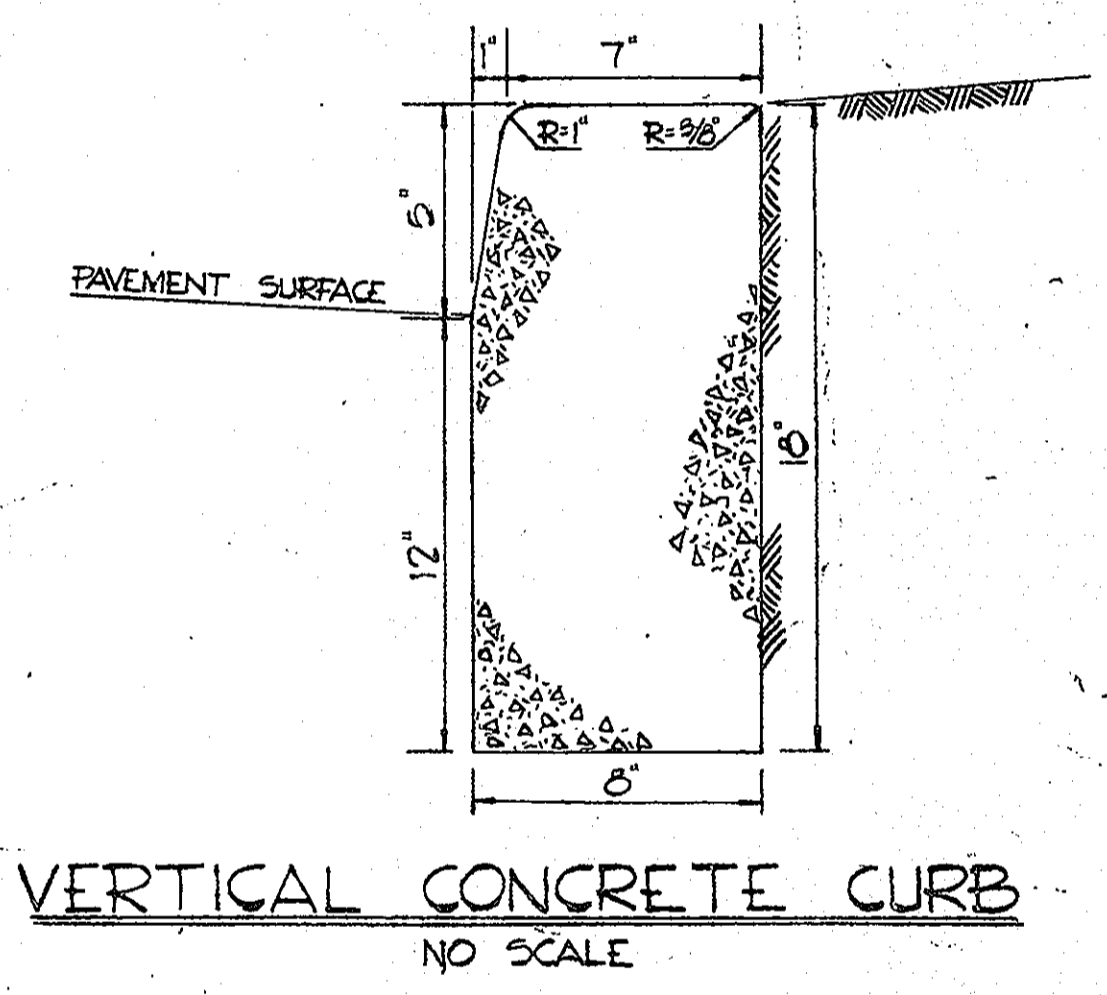
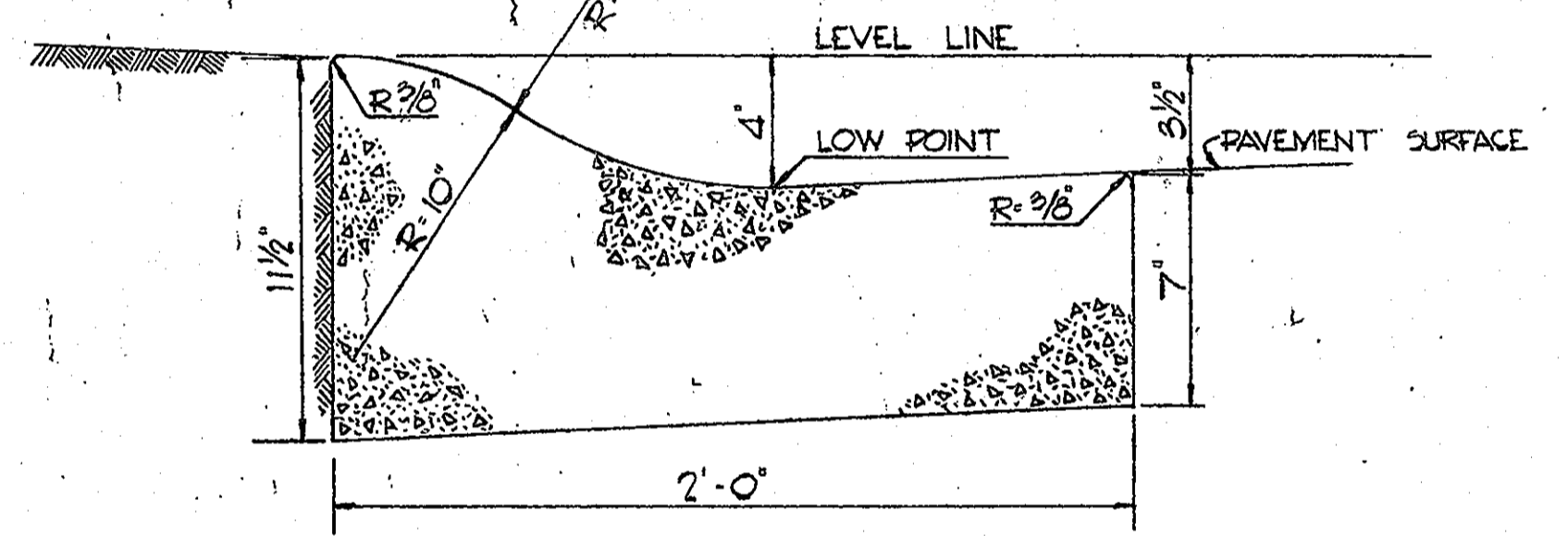
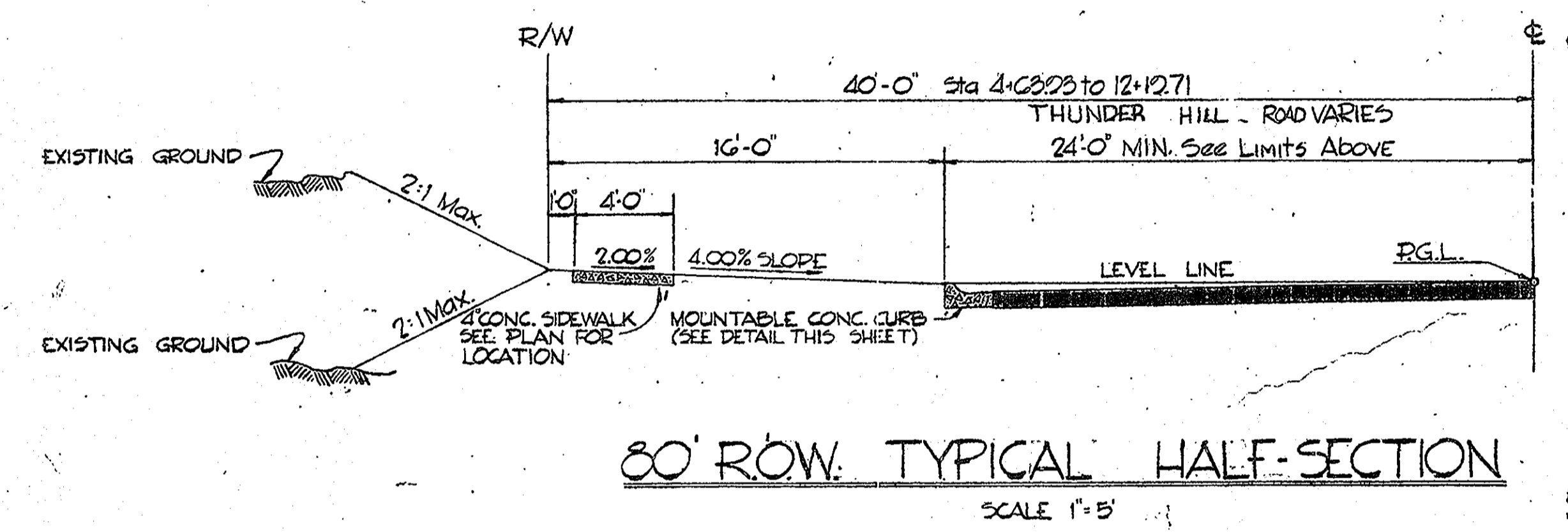
89



CLEARING AND GRADING ARTICLE C-1
 SUBGRADE ARTICLE C-2
 BASE COURSE ARTICLE C-2 or C-33
 BINDER COURSE ARTICLE C-31
 SURFACE COURSE ARTICLE C-31

NOTE:
 PAVEMENT TO BE CONSTRUCTED IN ACCORDANCE WITH THE HOWARD COUNTY ROAD CONSTRUCTION CODE AND SPECIFICATIONS
 DRWG D-118 PAGE 105

8" PAVEMENT DETAIL
 NO SCALE
 THUNDER HILL ROAD
 STA. 7+51.58 to STA. 45+42.56
 WHITEACRE ROAD
 STA. 0+00 to STA. 19+12.35
 STEVEN'S FOREST ROAD
 STA. 0+00 to STA. 9+17.04



- NOTES:
1. INLETS MAY BE CONSTRUCTED OF REINFORCED CONCRETE OR BRICK. SIZE, TYPE & DIRECTION OF INLET CONNECTION WILL VARY TO SUIT CONDITIONS.
 2. THE INVERT SHALL BE BRICK OR PLAIN CLASS "A" CONCRETE.
 3. B = 8" WHERE A IS 7" OR LESS.
 4. B = 12" WHERE A IS 7" TO 11"
 5. TOP 4" OF WALLS SHALL BE MASONRY. ADDITIONAL BRICK SHALL BE USED TO BRING THE GRATE TO EXISTING GRADE IF REQUIRED.
 6. REINFORCEMENT REQUIRED, ON OUTSIDE, AS WELL AS ON INSIDE OF WALLS BELOW 7'-0" WHEN A IS GREATER THAN 7'-0". SPACING, SAME AS FOR INSIDE OF WALL.
 7. PLACE 1/4" EXPANSION MATERIAL OF THE SAME TYPE APPROVED FOR PAVEMENT BETWEEN THE FRAME AND ABUTTING RIGID PAVEMENT, & BETWEEN ENDS OF INLET CURB & NORMAL CURB.

APPROVED
 PLANNING COMMISSION
 DATE: 10/24/68
 JWC

Rev Date	Rev No	Revision Description
COLUMBIA		
M A R Y L A N D DISTRICT - HOWARD COUNTY		
OWNER AND DEVELOPER HOWARD RESEARCH AND DEVELOPMENT CORP. THE VILLAGE OF GROSS KEYS - BALTIMORE, MARYLAND 21210		
PROJECT AREA VILLAGE OF OAKLAND MILLS SECTION 2 VILLAGE CENTER AREA 1		
PROJECT TITLE TYPICAL SECTIONS STANDARD DETAILS		
Des By	T.S.	Scale AS NOTED
Drn By	F.T. & J.B.	Date APRIL 4, 1968
Chk By	RA	Approved
Dwg No	13 of 14	C.C.F. No
		D-2-1-68435

