

Approved: Howard County Planning Comm. **J.H. Clawson** 10-14-68
 Date: 10-14-68
 Approved: Howard County Reads Dept. **Granville H. Noland** 10-7-68
 Date: 10-7-68
 Chief Engineer: **W.O. Pickett** 10-9-68
 Date: 10-9-68

PURDUM AND DEECKE
 Engineers and Land Surveyors
 24 Park Ave
 Ellicott City, Maryland
 Reg. No. 2351

OWNER & DEVELOPER:
 The Development and Investment Corporation of Md.
 5638½ Balto. Nat. Pike
 Catonsville, Maryland.

PLAN/PROFILE: JAY EM COURT & CIRCLE
 SECTION # 9
 "GWYNN ACRES"
 Second Election Dist - Howard County, Md.
 January 16, 1968 Scale: As Shown
 Sheet 1 of 3

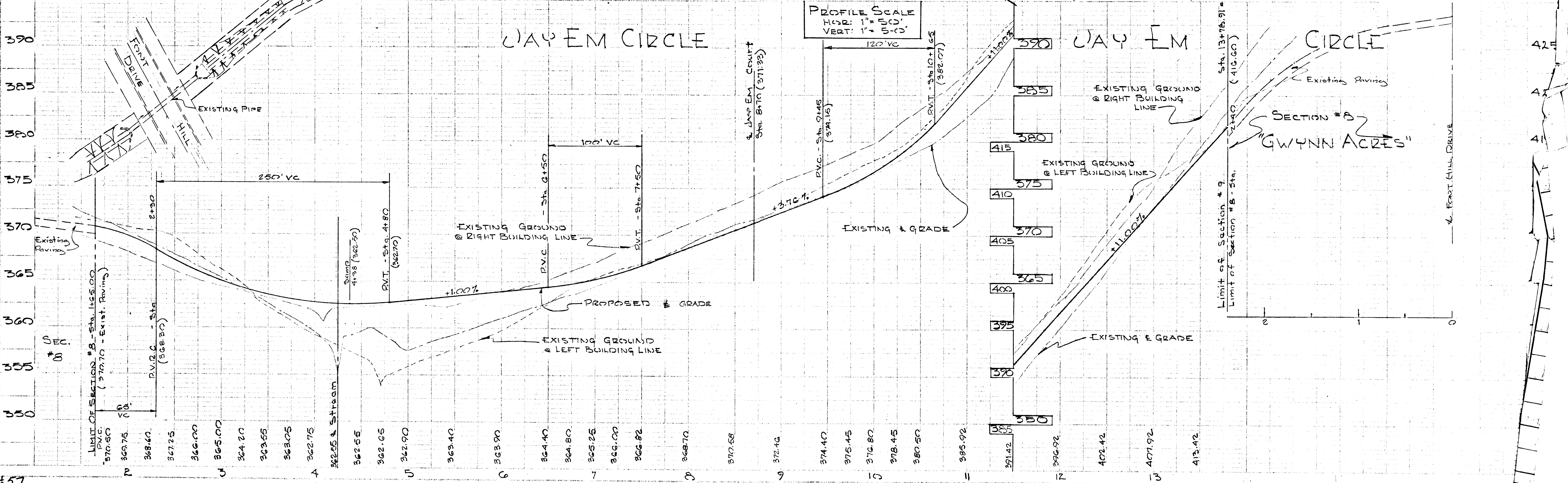
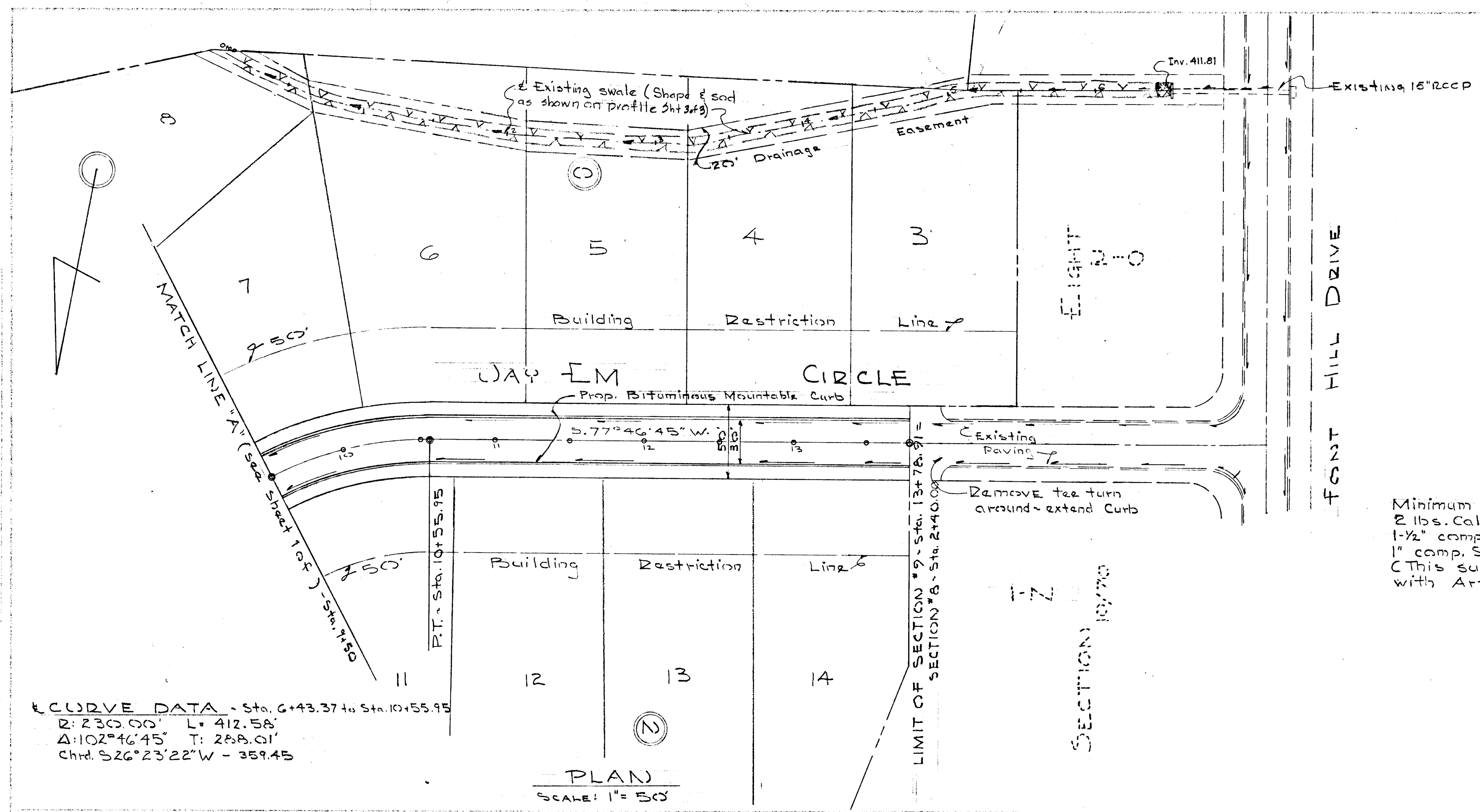
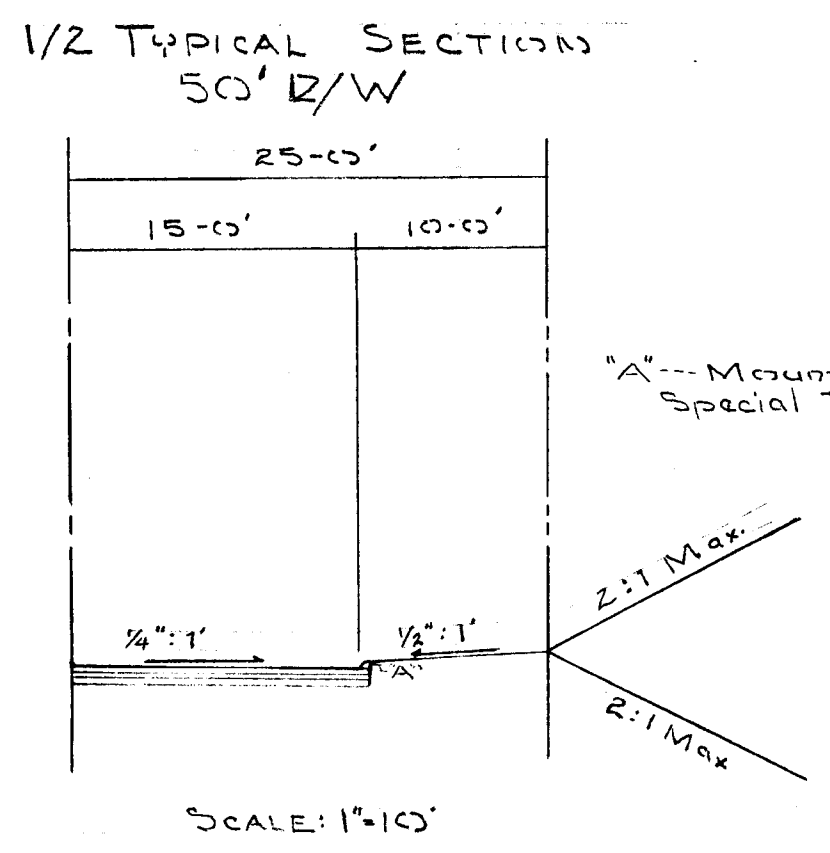


PLATE 1 - EXISTING PROFILE



CURVE DATA - Sta. 6+43.37 to Sta. 10+55.95
 R: 230.00' L: 412.58'
 Δ: 102°46'45" T: 288.01'
 Chd. S 26°23'22"W - 359.45'

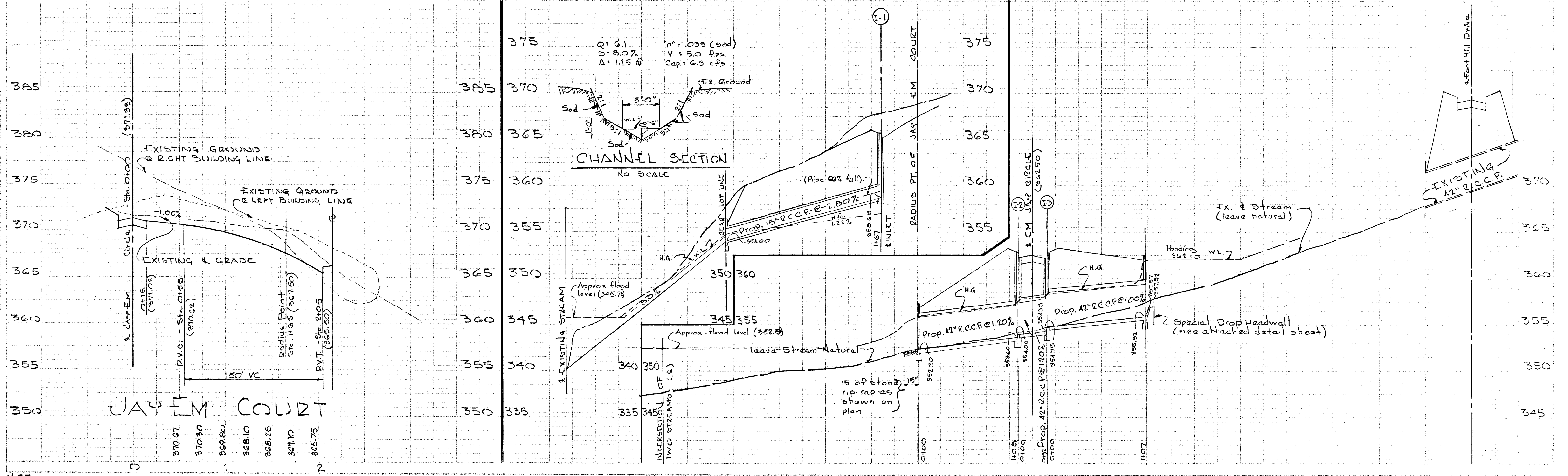
PLAN
 SCALE: 1" = 50'

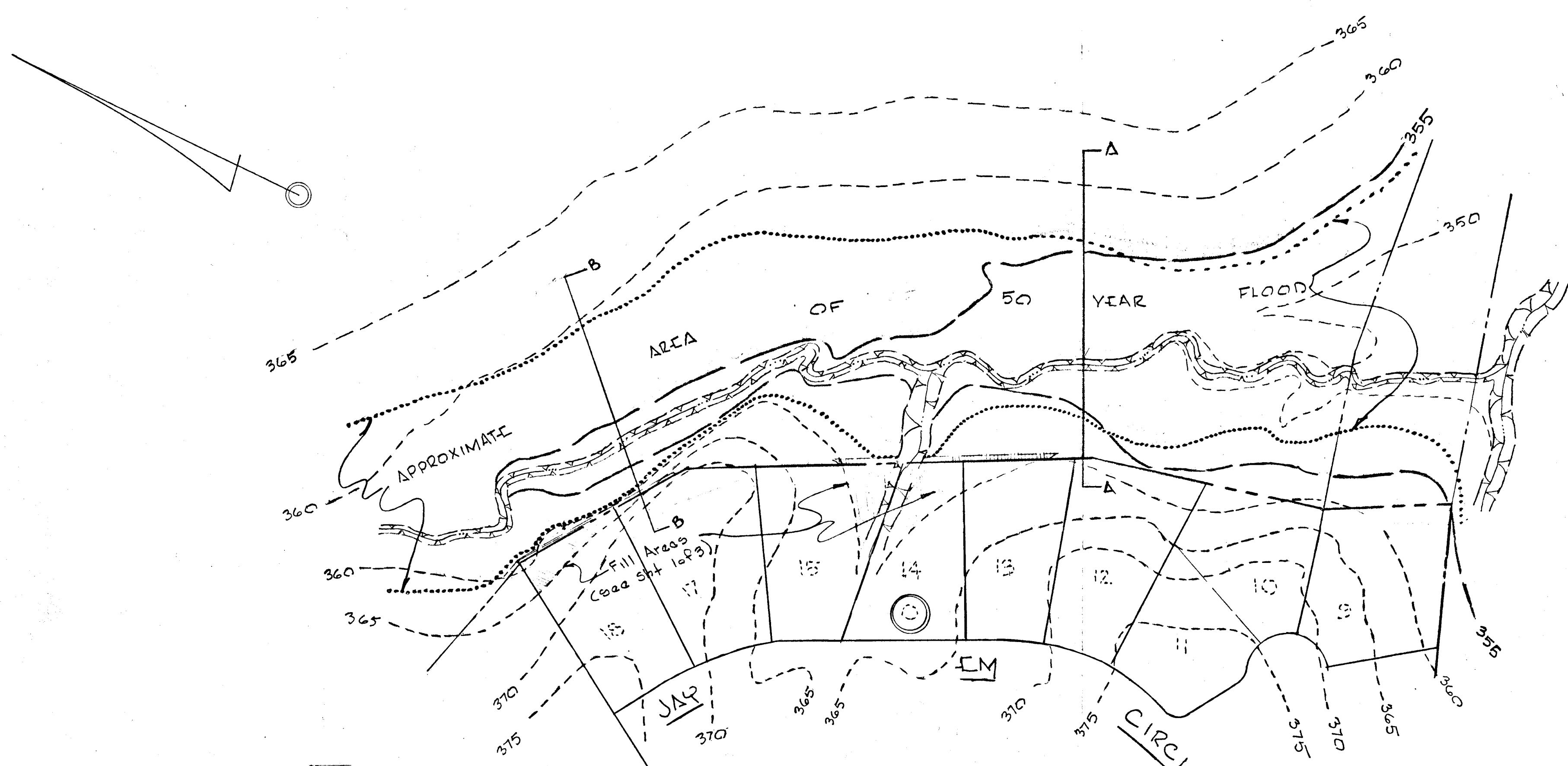


Minimum 9" of compacted Bank Run Gravel M.S.R.C. Spec.
 2 lbs. Calcium Chloride per Sq. Yd. - leave 30 days
 1-1/2" comp. Spec. B" Bit. Concrete Base Course
 1" comp. Spec. B" Bit. Concrete Surface Course
 (This surface type to be constructed in accordance with Article C-31 Howard County Roads Spec.)

- NOTES:**
- 1) For details of "E" Combination & Double "E" Combination Inlets, see Drawing D-6B, page 123 of the Howard County Roads Specification.
 - 2) For details of type "B" Endwall, see Drawing D-45, page 103 of the above mention Spec.
 - 3) For details of type "C" Endwall, see Drawing D-D-52, page 107, of the above mention Spec.
 - 4) All slopes over 3:1 shall be sodded.

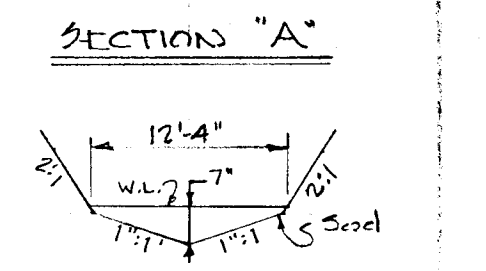
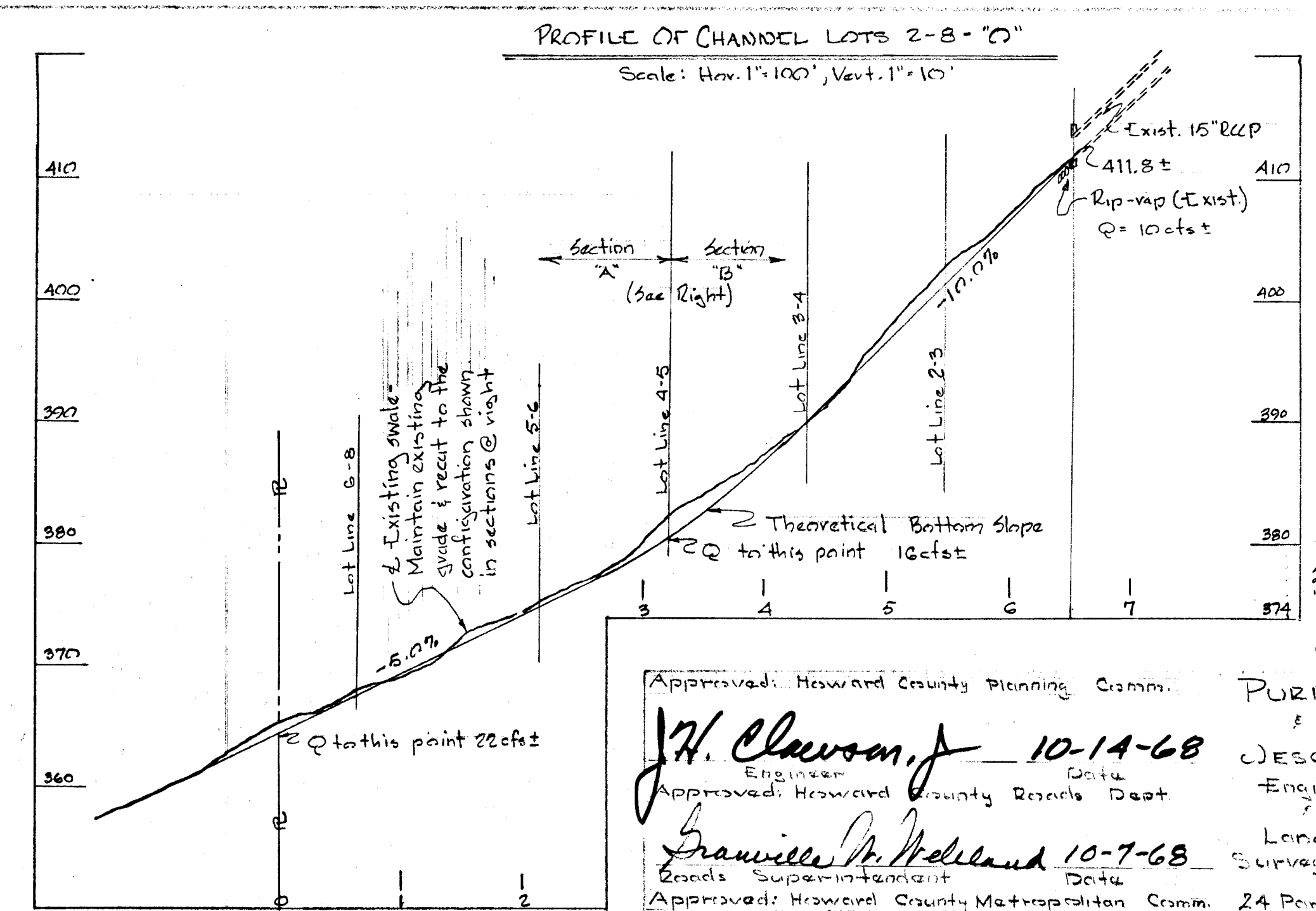
Approved: Howard County Planning Comm.	PURDUM	Jan 9, 1968
<i>J.H. Clewley</i> Engineer Approved: Howard County Roads Dept.	JESCIKE	
Date: 10-14-68	Engineers and Land Surveyors	
<i>Francis W. Nelson</i> Roads Superintendent Approved: Howard County Metropolitan Comm.	24 Park Ave. Ellicott City, Maryland	
Date: 10-7-68		
<i>W.O. Pallet</i> Civil Engineer	Date: 10-9-68	Reg. No. 2351
OWNER AND DEVELOPER	PLAN & PROFILE: JAY EM CIRCLE - DETAILS	
The Development and Investment Corporation of Md.	SECTION #2	
	"GWYNNS ACRES"	
563 1/2 Balto. Natl. Pike Catonsville, Maryland	Second Election Dist. - Howard County, Md. January 16, 1968 Scale: As Shown Rev: 6 May 1968 Sheet 2 of 3	



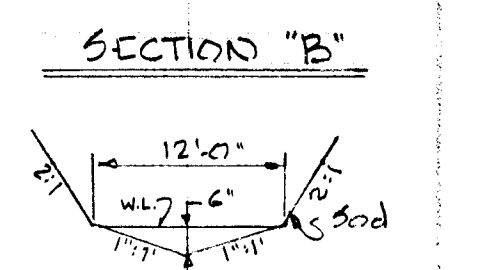


NOTE:
 All slopes in fill areas to be sodded.

PLAN OF FLOOD PLAN
 SCALE: 1"=100'



A = 4 ft H.Q. = .33
 Slope: Variable - 5% @ 7%
 "n": 0.025 (Sod)
 Vel: Variable - 2.35 to 4.9 fps
 Cap: Variable - 25.0 to 27.4 cfs



A = 3 ft H.Q. = .25
 Slope: Variable - 6% @ 10%
 "n": 0.025 (Sod)
 Vel: Variable - 3.8 to 7.4 fps
 Cap: Variable - 17.4 to 22.2 cfs

Approved: Howard County Planning Comm. PURDUM 16 JAN 1968
 J.H. Clawson, Jr. 10-14-68
 Approved: Howard County Records Dept. JESCHKE
 Granville M. McLeod 10-7-68
 Approved: Howard County Metropolitan Comm. 24 Park Ave. Land
 W.O. Lambert 10-9-68
 Chief Engineer, Data Ellcott City, Maryland. 1200 N. 2351
 OWNER & DEVELOPER
 The Development and Investment Corporation of Md.
 FLOOD PLAIN PLAN
 Section # 9
 "GWYNN ACRES"

5638 1/2 Balt. Nat. Pike Second Election Dist. - Howard County, Md.
 Catonsville, Maryland. Jan. 10, 1968 Scale: As Shown
 Rev: 6 May 1968 Sheet 3 of 3

