

OWNER & DEVELOPER
CARWELL, INC.
CHATHAM ROAD
ELlicOTT CITY, MARYLAND

ENGINEER
PURDUM & WESCHKE
24 PARK AVENUE
ELlicOTT CITY, MARYLAND

APPROVED: HOWARD COUNTY PLANNING COMM.
Date: 12-6-67

APPROVED: HOWARD COUNTY ROADS DEPT.
Date: 12-7-67

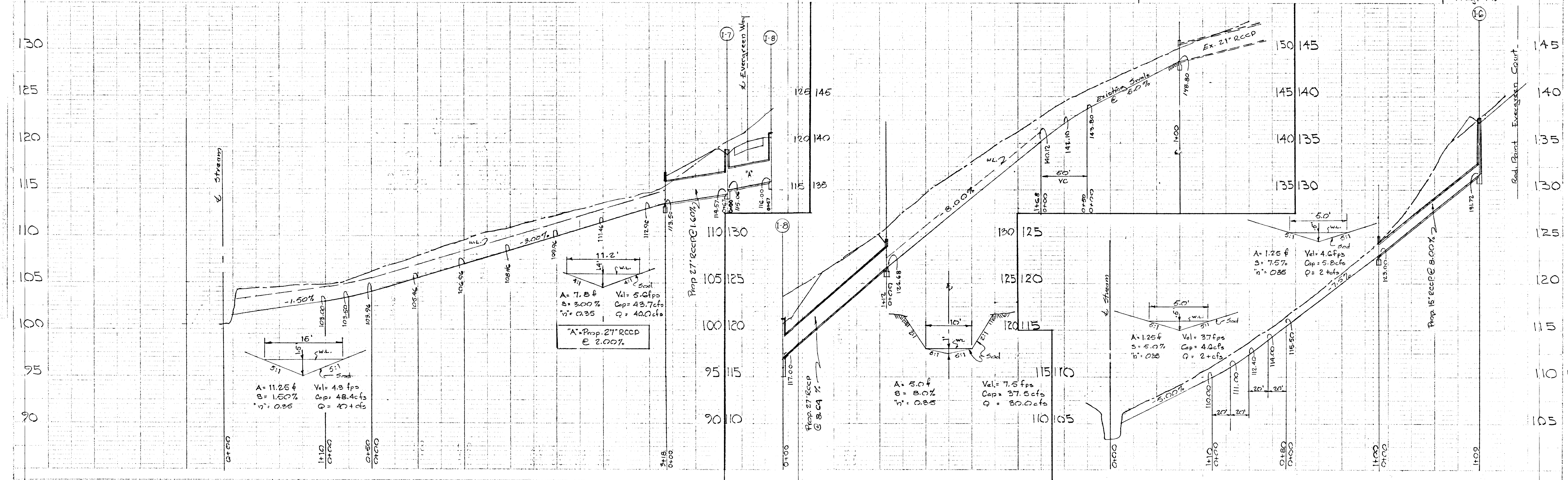
APPROVED: HOWARD COUNTY METROPOLITAN COMM.
Date: Dec 5 67

APPROVED
PLANNING COMMISSION
OF HOWARD COUNTY

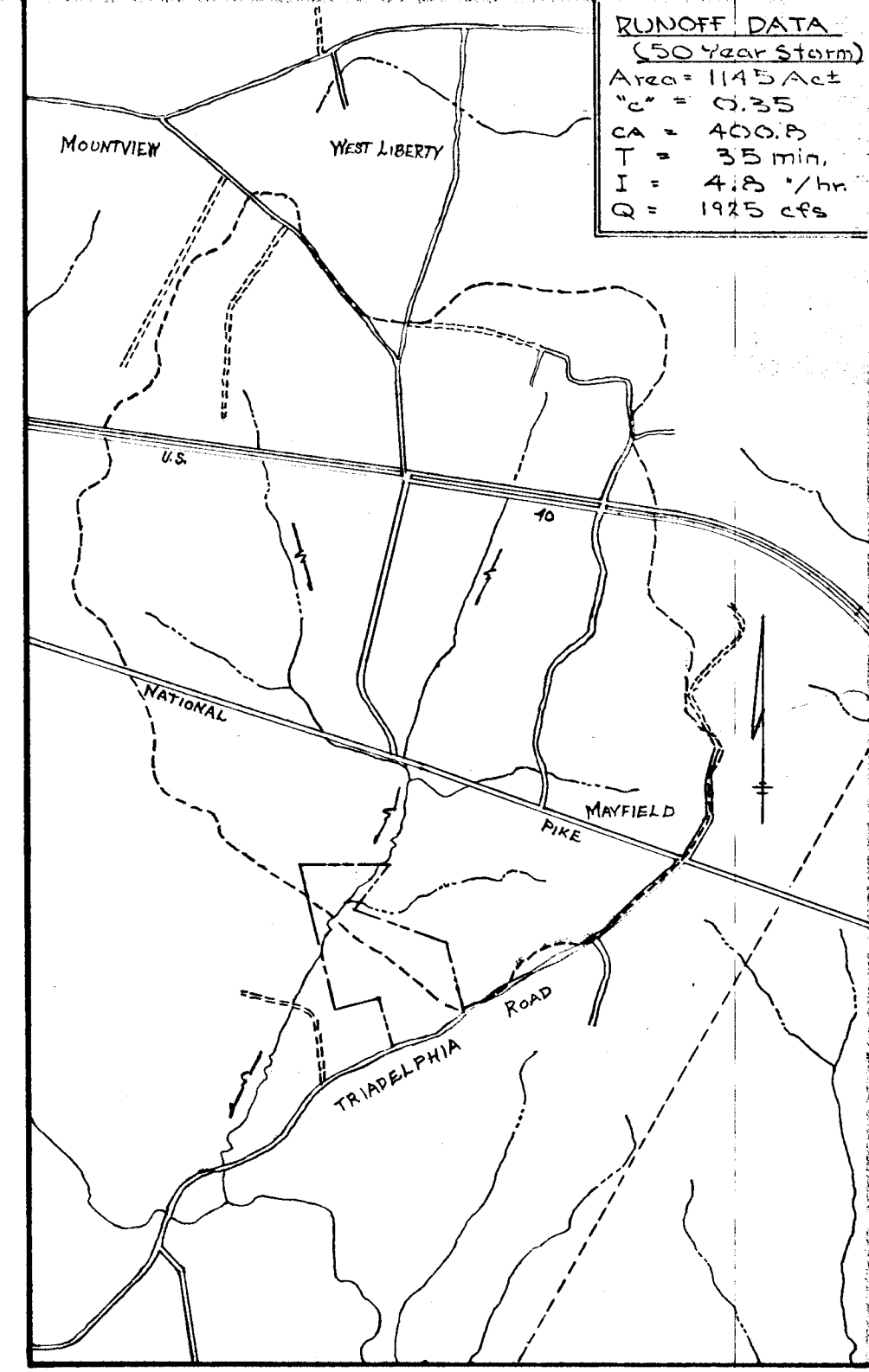
DETAIL SHEET
SECTION N°4
GREEN HEDGE
3RD ELECTION DISTRICT - HOWARD COUNTY, MD.
OCTOBER 12, 1967
20 NOV. 1967
4 Dec. 1967
SCALE: AS SHOWN
SHEET N° 2 OF 3

28 3/4" 1967
Date

Reg. N° 2351

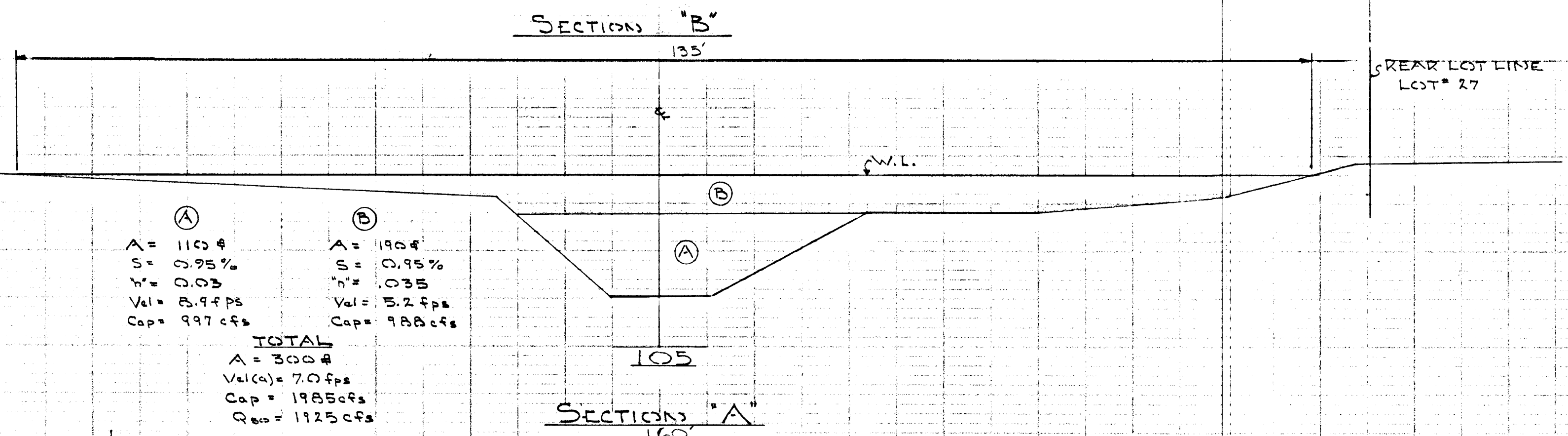
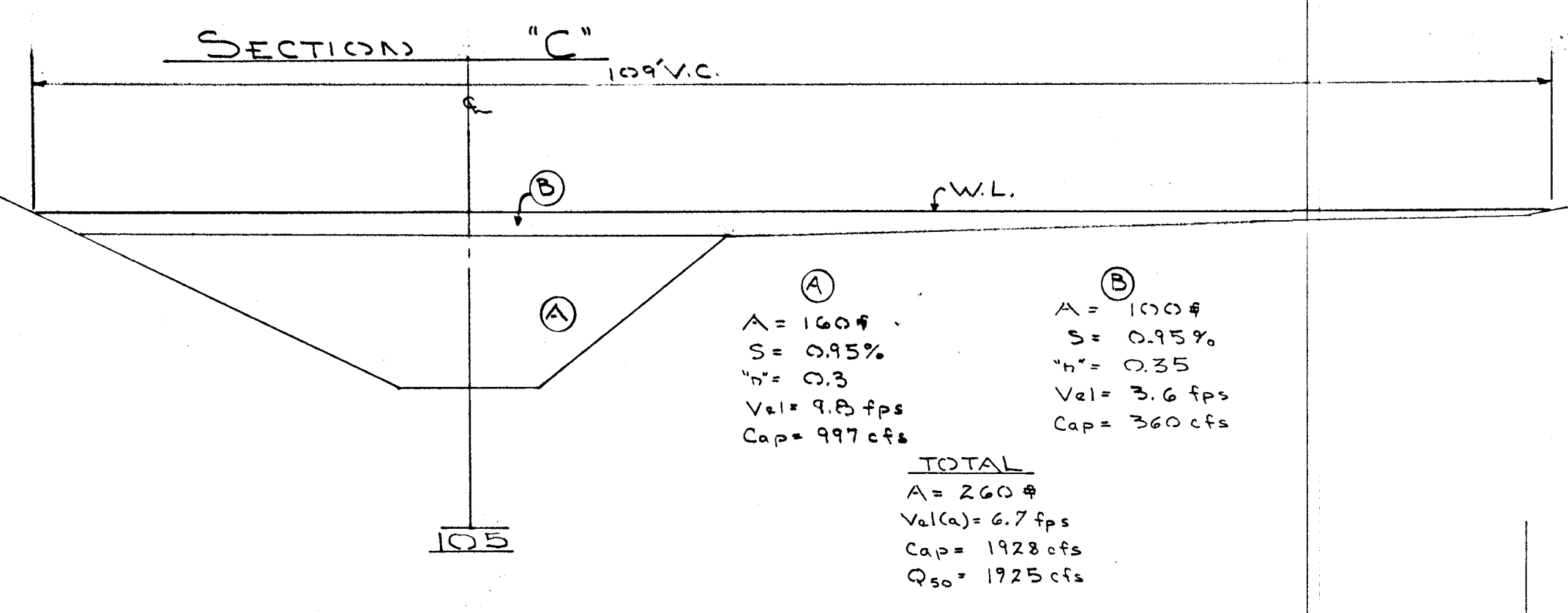
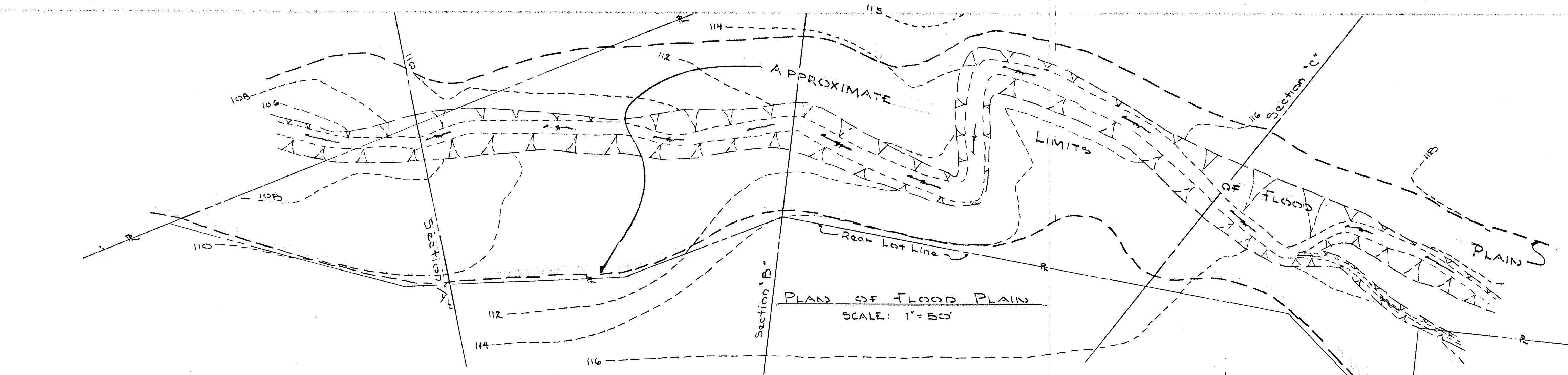


RUNOFF DATA
 (50 Year Storm)
 Area = 114.5 Acs
 C_r = 0.35
 C_a = 400.0
 T = 35 min.
 I = 4.8 in/hr
 Q = 1925 cfs



APPROVED
 PLANNING COMMISSION
 OF HOWARD COUNTY

VICINITY MAP
 SCALE 1"=2000'



SECTION SCALE
 HOR. 1"=10'
 VERT. 1"=5'-0"

DETAILS OF FLOOD PLAINS
 SECTION NO. 4
GREEN HEDGE
 THIRD ELECTION DISTRICT - HOWARD COUNTY, MARYLAND
 OCTOBER 11, 1967
 Nov. 20, 1967
 SCALE: AS SHOWN
 SHEET 3 of 3

