

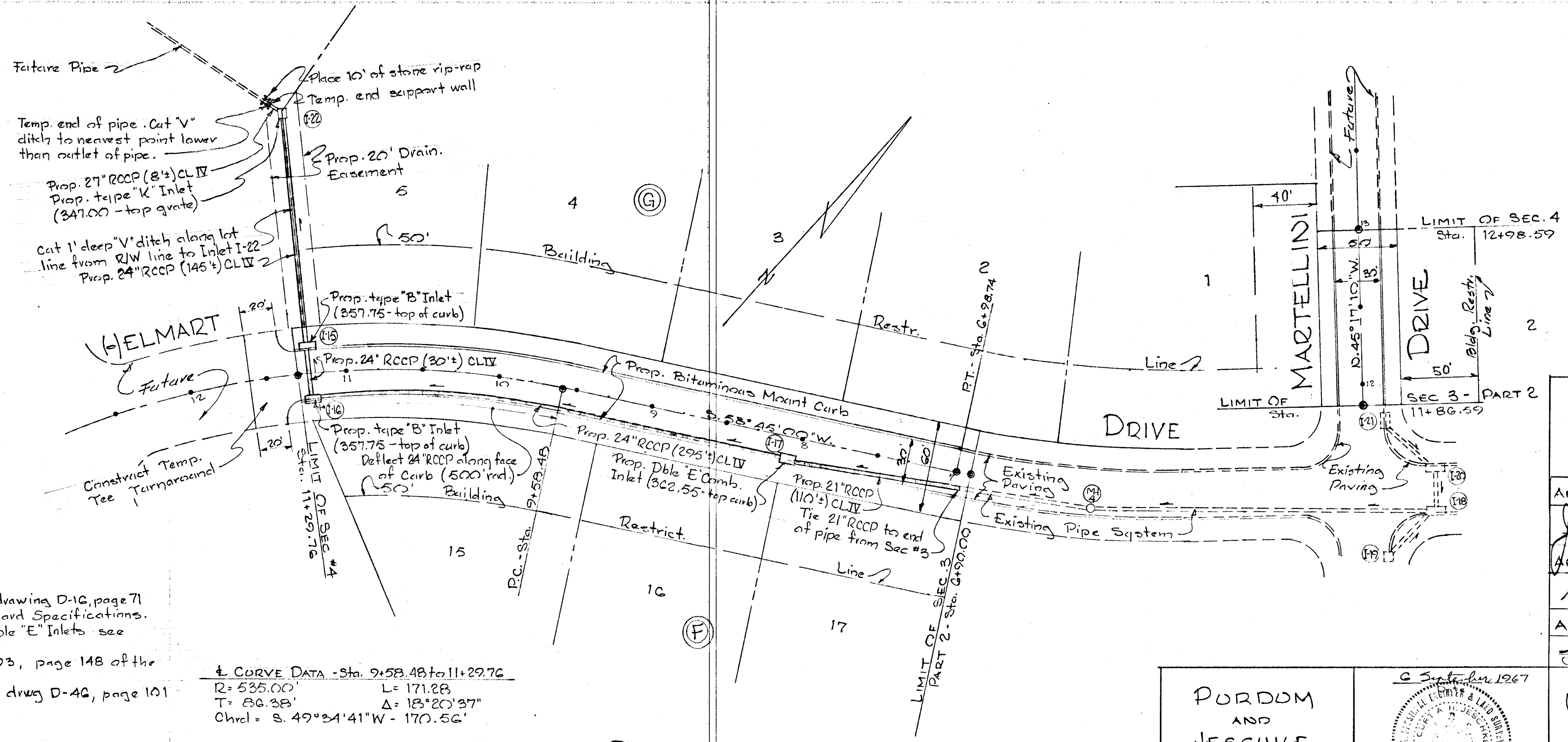
Over 4% - Minimum of 9" of comp. bank run gravel MSRO spec.
2 lbs calcium chloride/sq - leave 20 days.
Under 4% - Same base as above.
2 lbs calcium chloride/sq - leave 20 days, apply 4/10 gal. prime oil/sq. - leave 5 days.
1/2" comp. spec. "B" bitumin. conc. base course.
1" comp. spec. "B" bitumin. conc. surface course.
(in accordance with Article C-31 - Howard Co. Rd. Spec.)

GENERAL NOTES

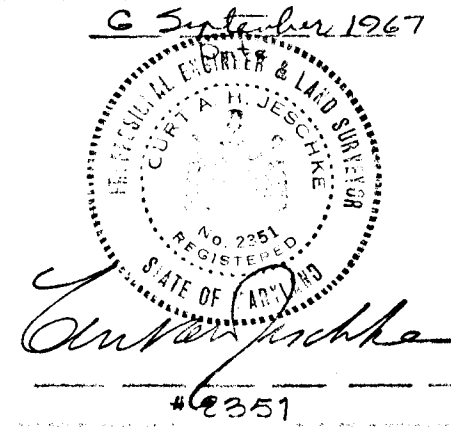
- 1) For typical roadway section, see drawing D-10, page 71 of the Howard Co. Road and Standard Specifications.
- 2) For details of types "A", "B", & "Dble E" Inlets - see attached sheets.
- 3) For type "K" Inlet see drug D-93, page 148 of the above specifications.
- 4) For stand. end support wall see drug D-46, page 101 of the above specifications.

± CURVE DATA - Sta. 9+58.48 to 11+29.76
R = 535.00' L = 171.88'
T = 86.35' Δ = 18°20'37"
Chnl. = S. 49°34'41"W - 170.56'

PLAN
Scale: 1" = 50'



PURDOM AND JESCHKE ENGINEERS 24 PARK AVE ELLICOTT CITY, MD.



OWNER & DEVELOPER
ALADDIN CONCRE. CORP.
RFD #1 - MONTGOMERY RD.
ELLICOTT CITY, MD.

APPROVED: HOWARD CO. PLANNING COMMISSION
J. H. Lawson 10-18-67
Date

APPROVED: HOWARD COUNTY ROADS DEPT.
Kenneth W. Nebland 10-13-67
Roads Superintendent Date

APPROVED: HOWARD COUNTY METRO. COMM.
W. O. P. Hunt 10-17-67
Chief Engineer Date

PLAN & PROFILE
HELMART & MARTELLINI DRIVE
SECTION 4
Sheet 1 of 1
HAMMOND VILLAGE
G&E ELECT. DIST. HOWARD CO., MD.
6 SEPTEMBER 1967 SCALE: AS SHOWN
REV: 2 OCT 1967

