

@ CURVE DATA
 STA. 44+92.92 TO 49+35.59
 $\Delta = 72^\circ 28' 00''$
 $R = 350.00'$
 $L = 442.67'$
 $T = 256.47'$

@ CURVE DATA
 STA. 51+75.83 TO 55+81.05
 $\Delta = 04^\circ 00' 44''$
 $R = 5729.58'$
 $L = 401.22'$
 $T = 200.69'$

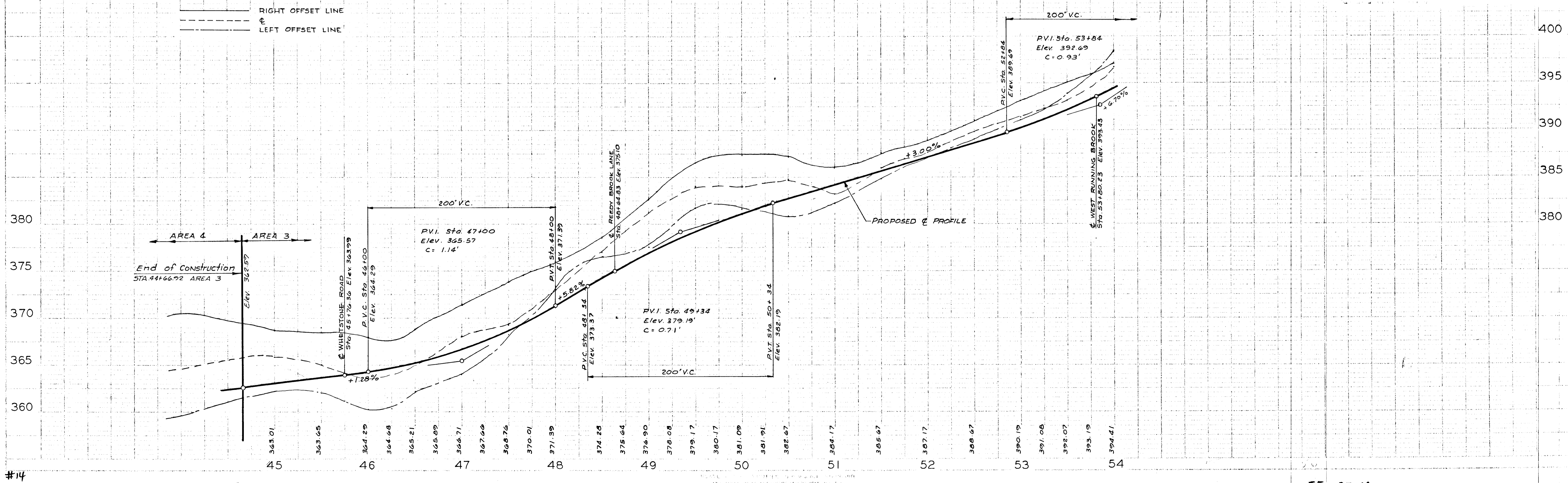
APPROVED
 PLANNING COMMISSION
 OF HOWARD COUNTY
 DATE: *JTC* 1967

Rev Date	Rev No	Revision Description
10-10-67	1	STORM DRAIN FROM Q1 TO Q5 H.E.M.

COLUMBIA
 MARYLAND
 THE ROUSE COMPANY THE VILLAGE OF CROSS KEYS, BALTIMORE, MARYLAND 21210

PROJECT AREA: VILLAGE OF WILDE LAKE
 SECTION 9 - RUNNING BROOK
 PROJECT TITLE: PAVING PLAN-AREA 3
 TEN MILLS ROAD

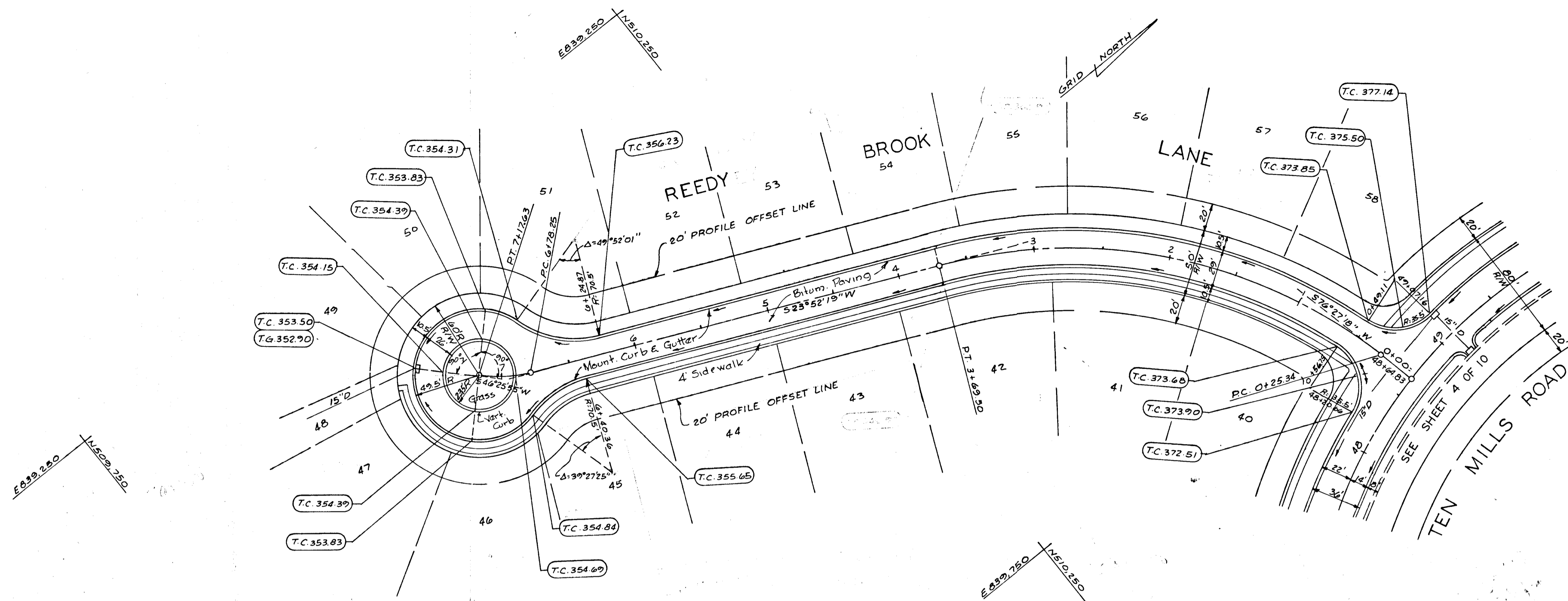
Des By	K.J.S.	Scale	1"=50'	Dwg No	4 of 10
Drn By	J.G.M.	Date	7/1/67	C.C.F. No	
Chk By	P.K.	Approved	<i>[Signature]</i>		



#14

XX TE-67-00

PLANNING COMMISSION
 OF HOWARD COUNTY
 APPROVED FOR THE
 DATE 7/1/67
 BY [Signature]



☉ CURVE DATA
 STA. 6+78.25 TO 7+17.63
 $\Delta = 22^\circ 33' 36''$
 $R = 100.00'$
 $L = 39.38'$
 $T = 19.95'$

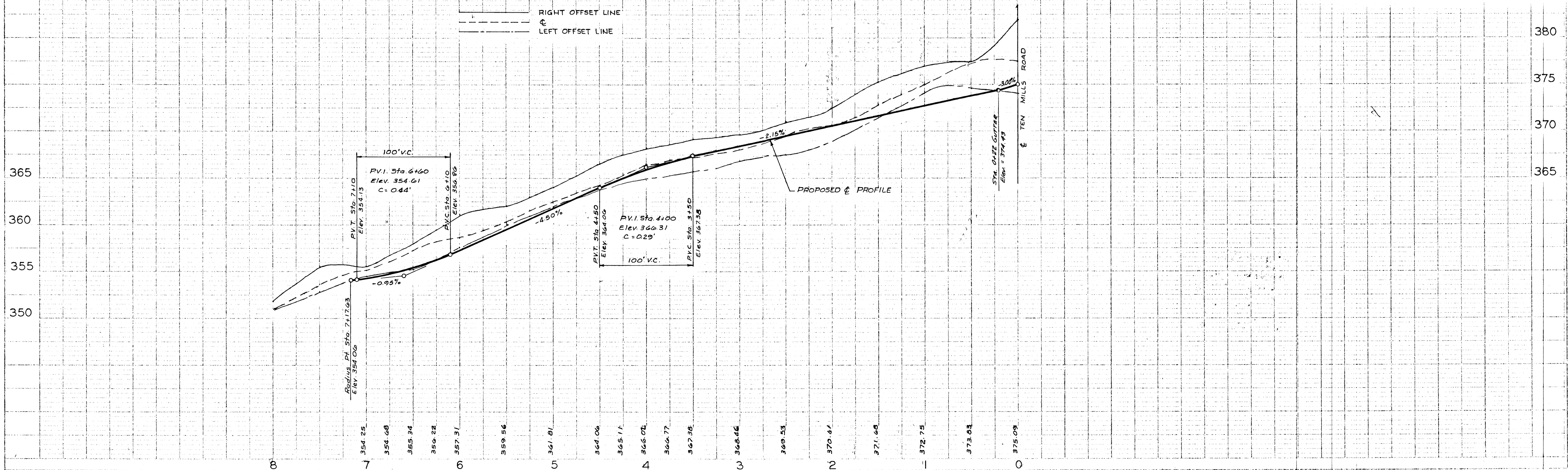
☉ CURVE DATA
 STA. 0+25.34 TO 3+69.50
 $\Delta = 52^\circ 34' 59''$
 $R = 375.00'$
 $L = 344.16'$
 $T = 185.27'$

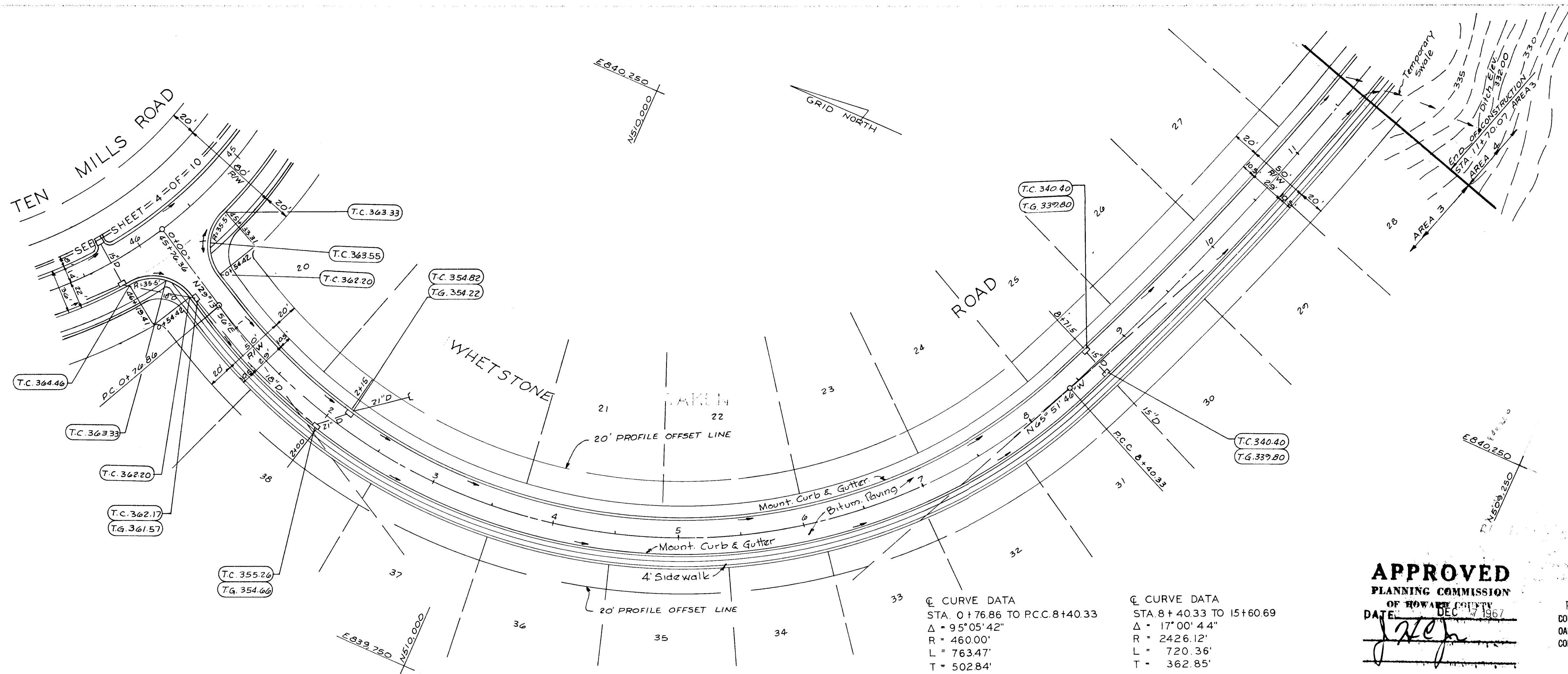
APPROVED
 PLANNING COMMISSION
 OF HOWARD COUNTY
 DATE 7/1/67
 BY [Signature]

PREPARED BY:
 CONSOER, TOWNSEND & ASSOCIATES
 OAKLAND MANOR OFFICE BUILDING
 COLUMBIA, MARYLAND, 21048

Rev Date	Rev No	Revision Description
COLUMBIA MARYLAND		
THE ROUSE COMPANY THE VILLAGE OF CROSS KEYS, BALTIMORE, MARYLAND 21210		
PROJECT AREA VILLAGE OF WILDE LAKE SECTION 9 - RUNNING BROOK		
PROJECT TITLE PAVING PLAN-AREA 3 REEDY BROOK LANE		
Des By	K.J.S.	Scale 1"=50'
Drn By	J.G.M.	Date 7/1/67
Chk By	P.K.	Approved [Signature]
Dwg No	6 of 10	C.C.F. No

PLANNING COMMISSION
 OF HOWARD COUNTY
 APPROVED FOR THE
 DATE 7/1/67
 BY [Signature]





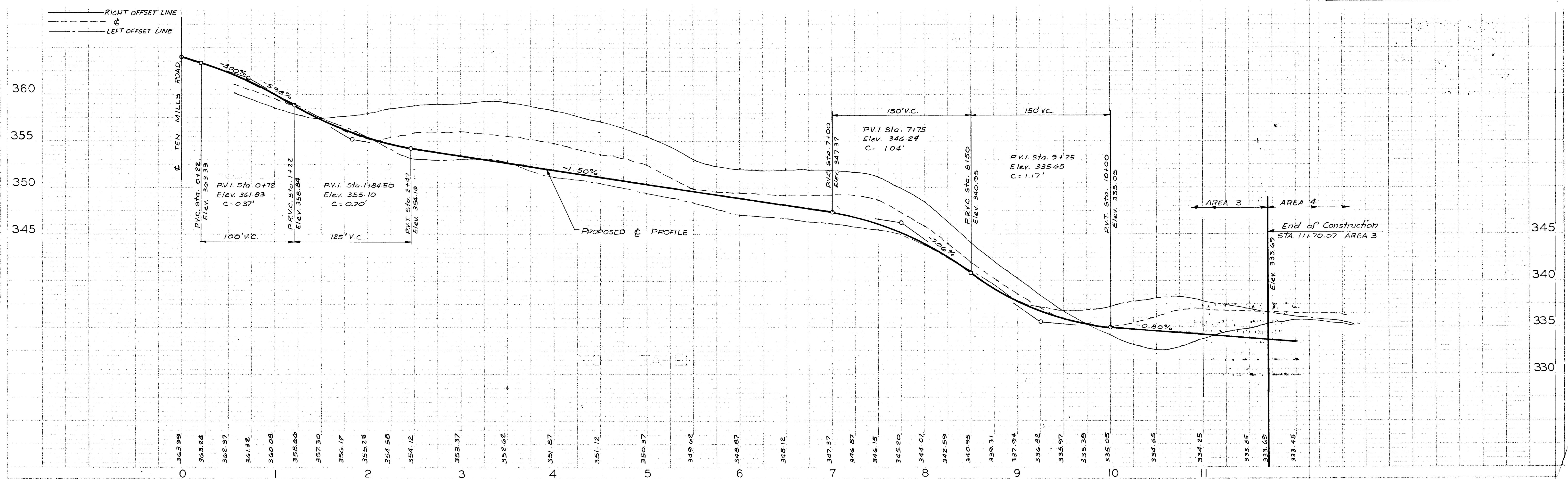
@ CURVE DATA
 STA. 0+76.86 TO P.C.C. 8+40.33
 $\Delta = 95^{\circ}05'42''$
 $R = 460.00'$
 $L = 763.47'$
 $T = 502.84'$

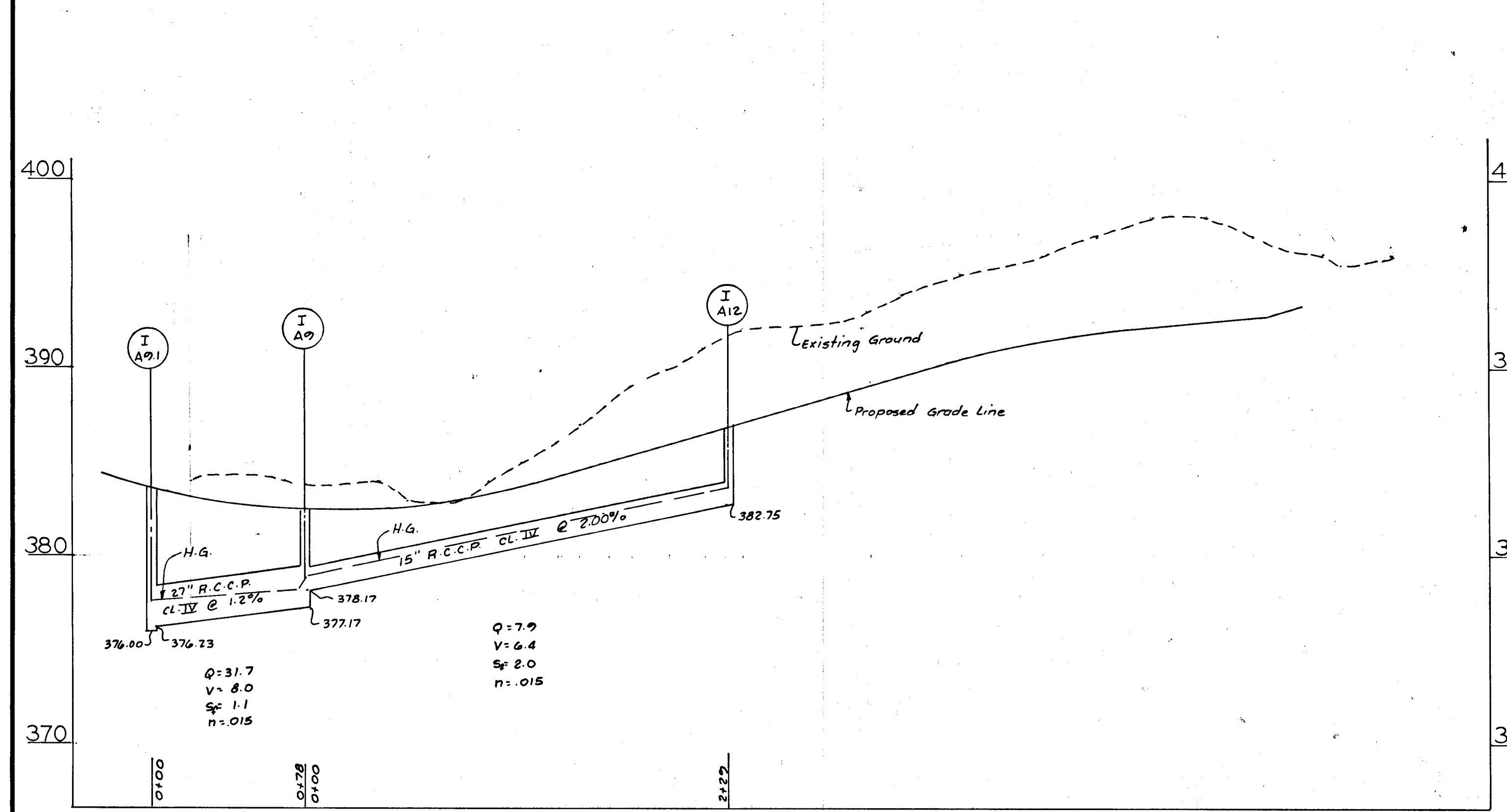
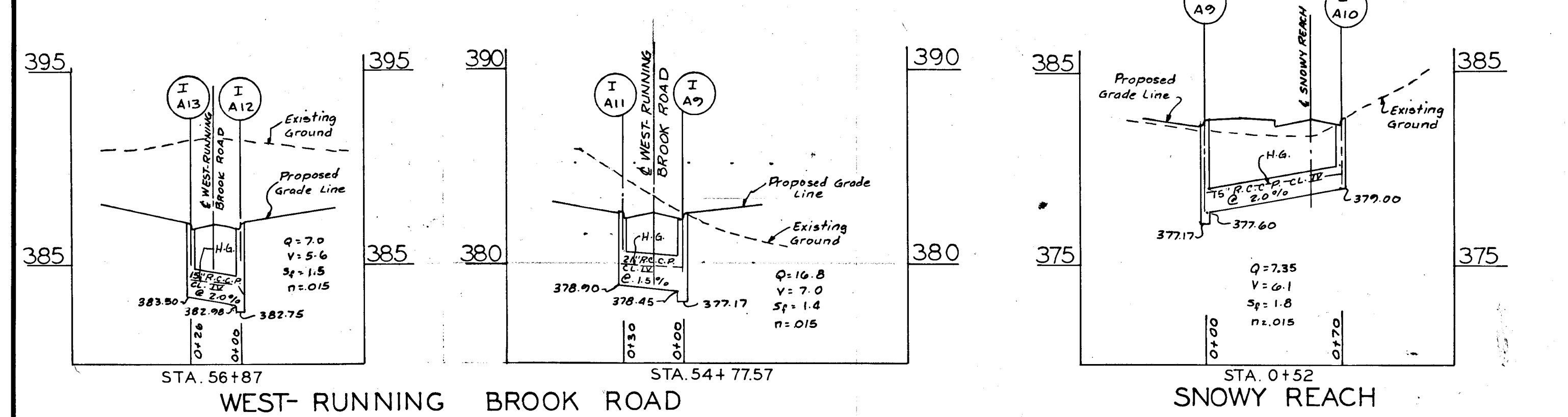
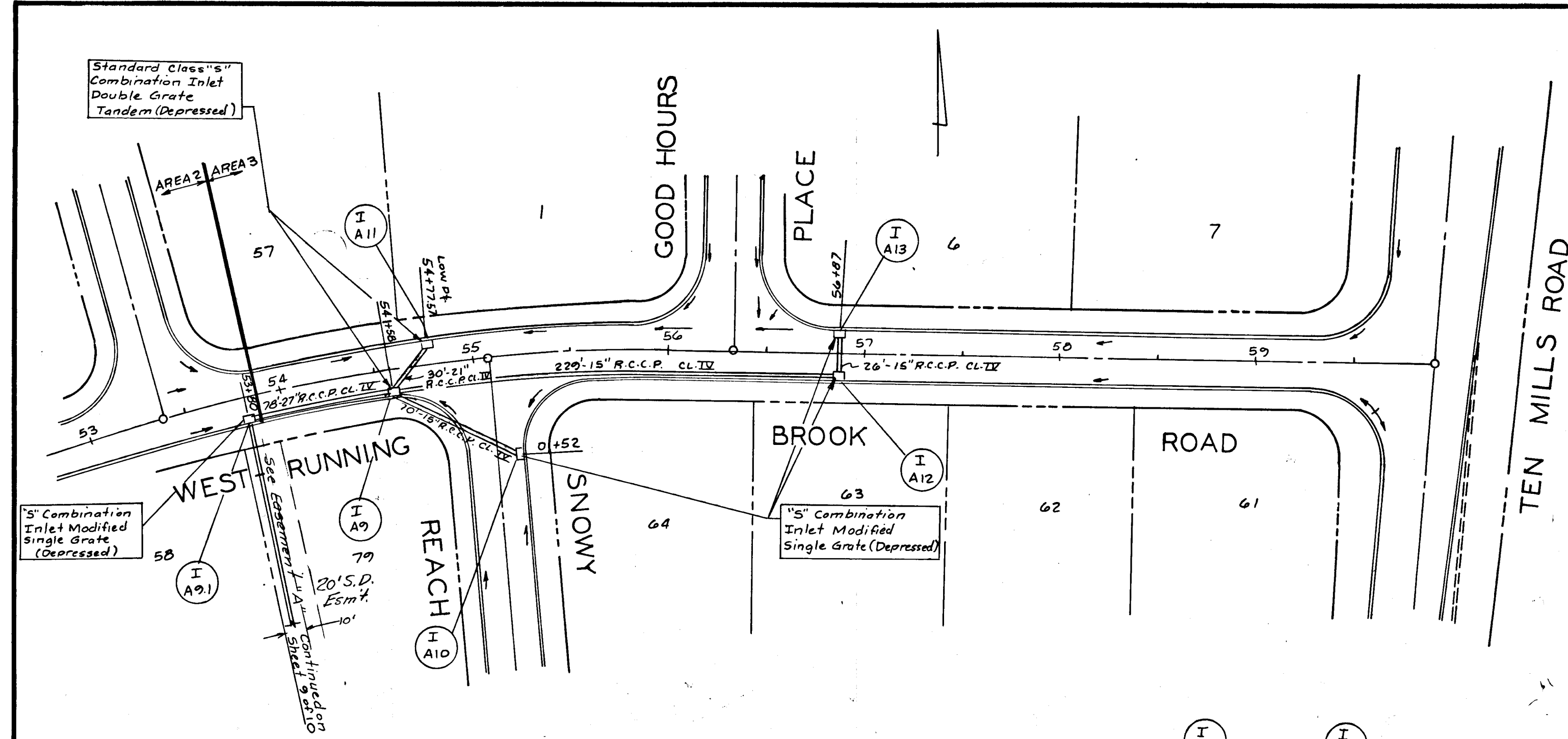
@ CURVE DATA
 STA. 8+40.33 TO 15+60.69
 $\Delta = 17^{\circ}00'44''$
 $R = 2426.12'$
 $L = 720.36'$
 $T = 362.85'$

APPROVED
 PLANNING COMMISSION
 OF HOWARD COUNTY
 DATE: DEC 17 1967

PREPARED BY:
 CONSOER, TOWNSEND & ASSOCIATES
 OAKLAND MANOR OFFICE BUILDING
 COLUMBIA, MARYLAND, 21043

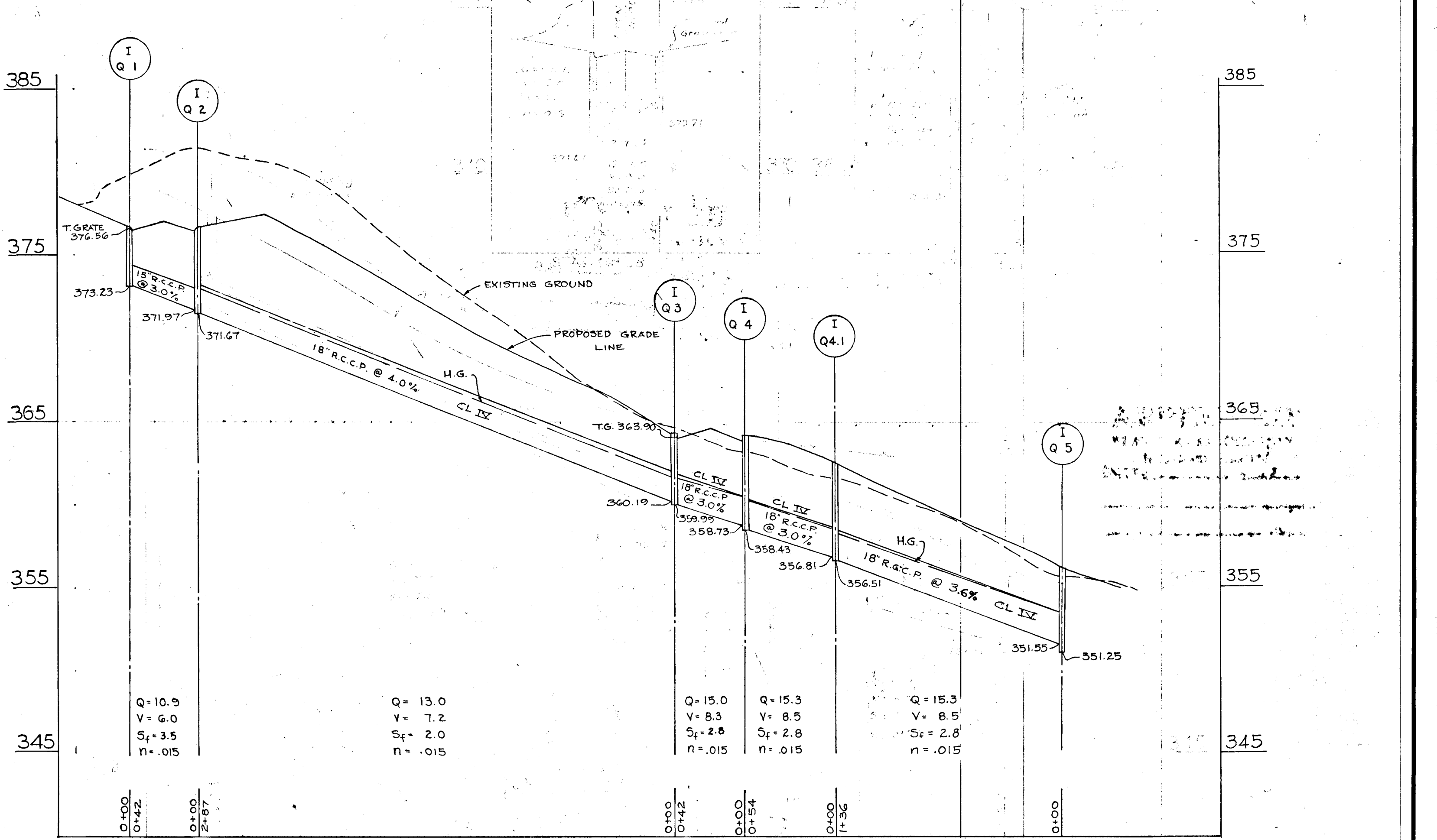
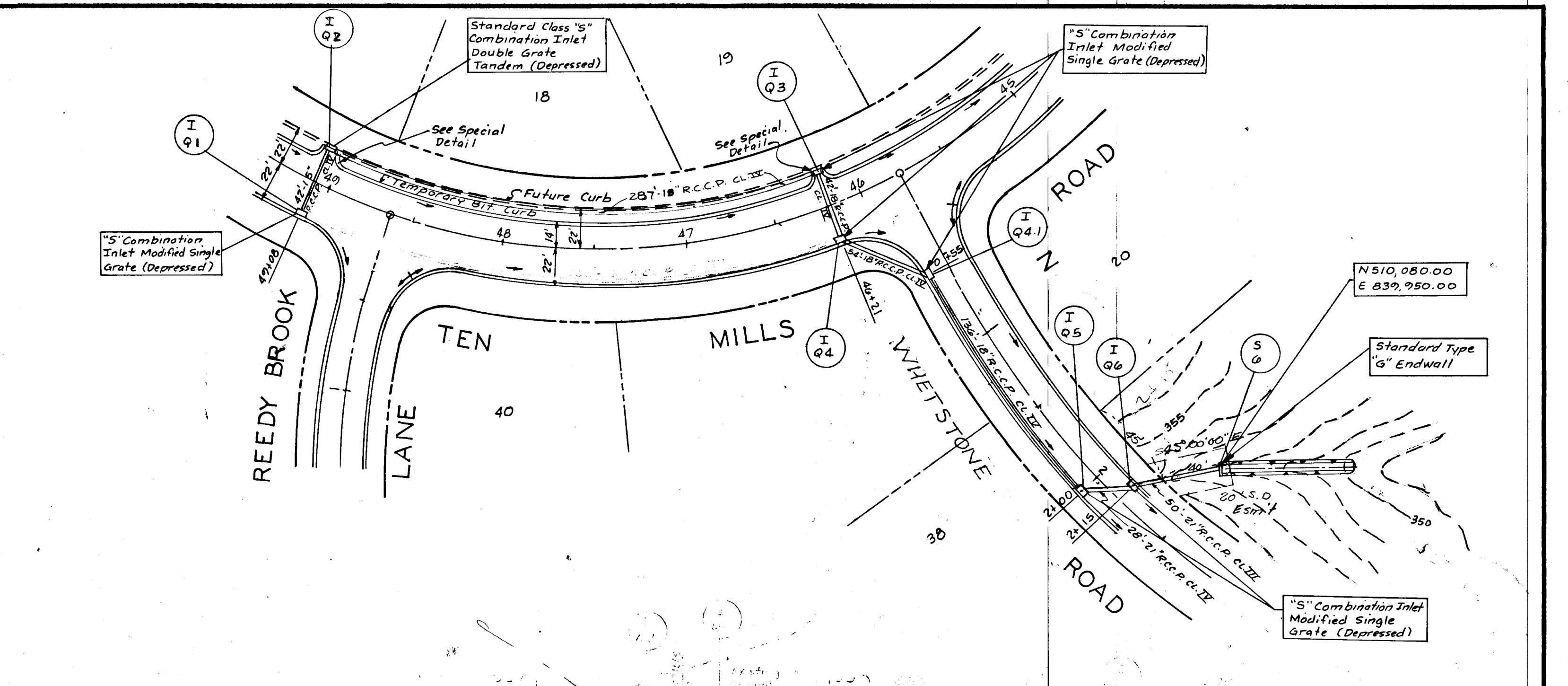
Rev Date	Rev No	Revision Description
COLUMBIA MARYLAND		
THE ROUSE COMPANY THE VILLAGE OF CROSS KEYS, BALTIMORE, MARYLAND 21210		
PROJECT AREA VILLAGE OF WILDE LAKE SECTION 9 - RUNNING BROOK		
PROJECT TITLE PAVING PLAN-AREA 3 NOT TAKEN ROAD		
Des By	K.J.S.	Scale 1"=50'
Drn By	J.G.M.	Date 7/1/67
Chk By	P.K.	Approved F.P.P.
Dwg No	7 of 10	C.C.F. No





WEST-RUNNING BROOK ROAD

Note:
 For construction details other than those shown on sheet 10 of 10, refer to Howard County Road Construction Code and Standard Specifications.
 1. For standard Manhole Drawing D-103, p. 158.
 2. For Class "S" Combination Inlet (Double Gate Tandem) Drawing D-102, p. 157.
 3. For Standard "G" Concrete Headwall Drawing D-61, p. 116.



TEN MILLS ROAD

APPROVED
 PLANNING COMMISSION
 OF HOWARD COUNTY
 DATE DEC 7 1967

DETAIL OF SODDED CHANNEL (NO SCALE)

WHETSTONE ROAD

STA. 2+00

Flow characteristics for Whetstone Road section:
 Q = 15.8, V = 7.1, Sf = 1.5, n = .015
 Q = 16.2, V = 7.2, Sf = 0.6, n = .015
 Q = 16.2, V = 3.0, Sf = 0.6, n = .015

Rev Date	Rev No	Revision Description
10-10-67	1	STORM DRAIN FROM Q-1 TO Q-5 H.K.M.

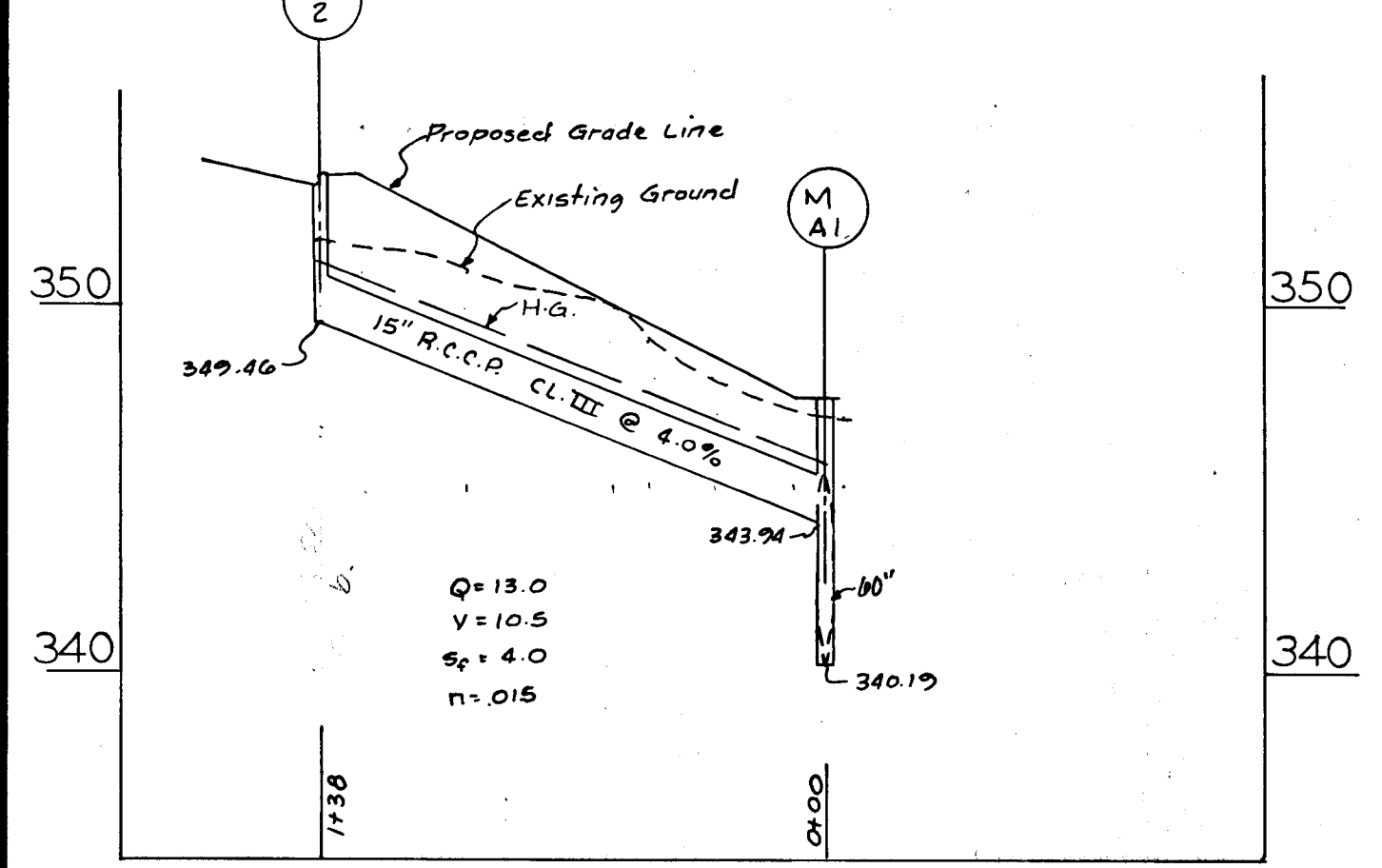
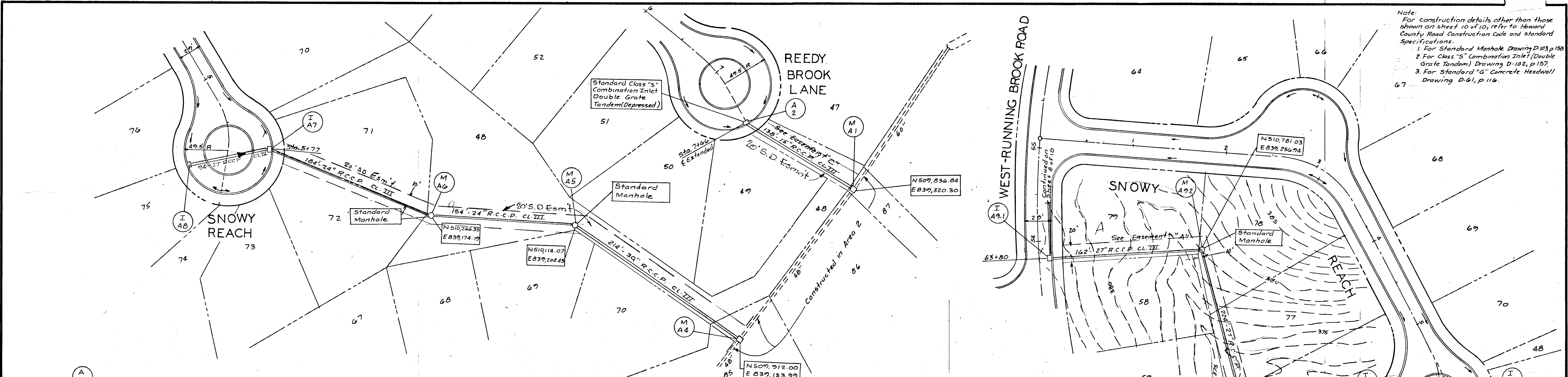
COLUMBIA MARYLAND

THE ROUSE COMPANY THE VILLAGE OF CROSS KEYS, BALTIMORE, MARYLAND 21210

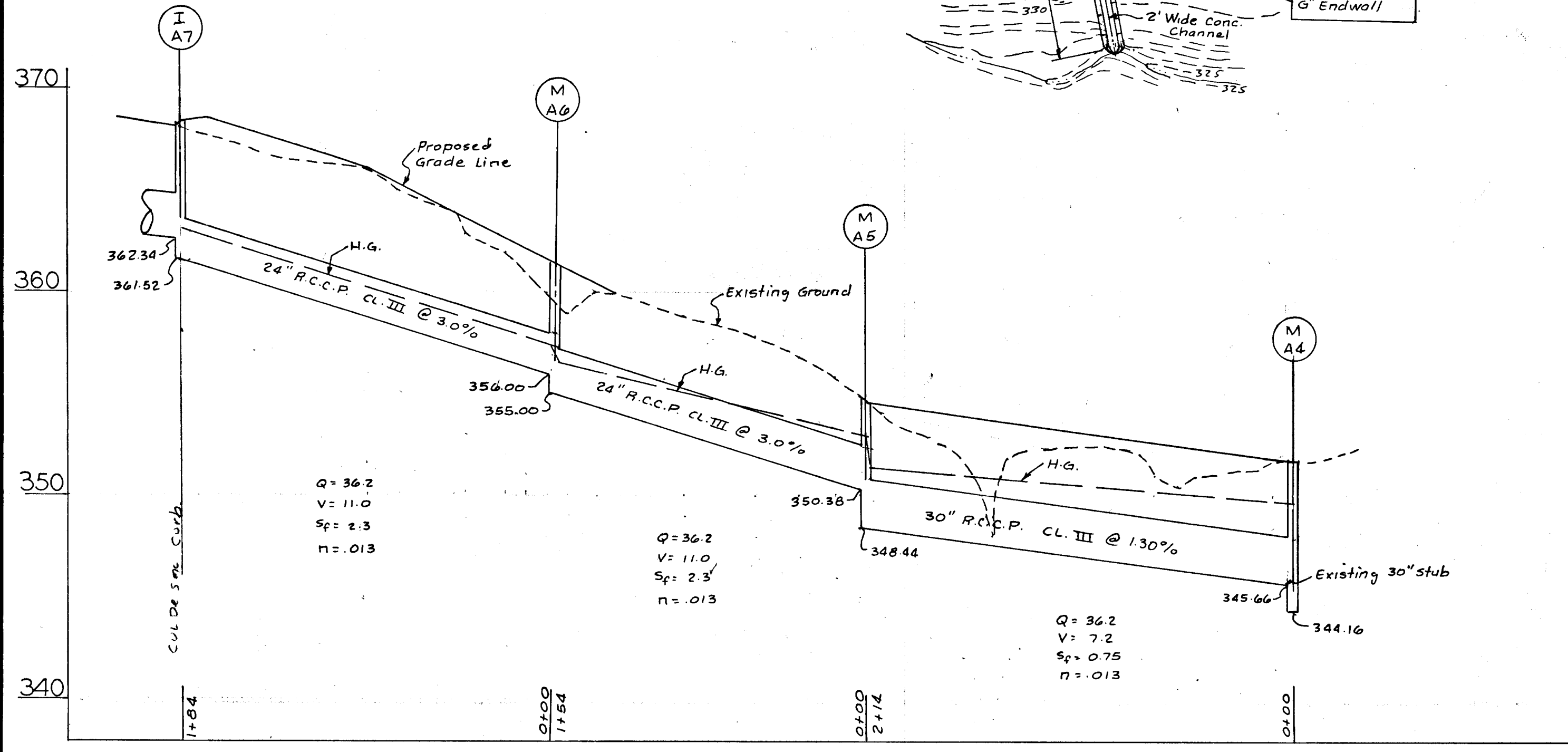
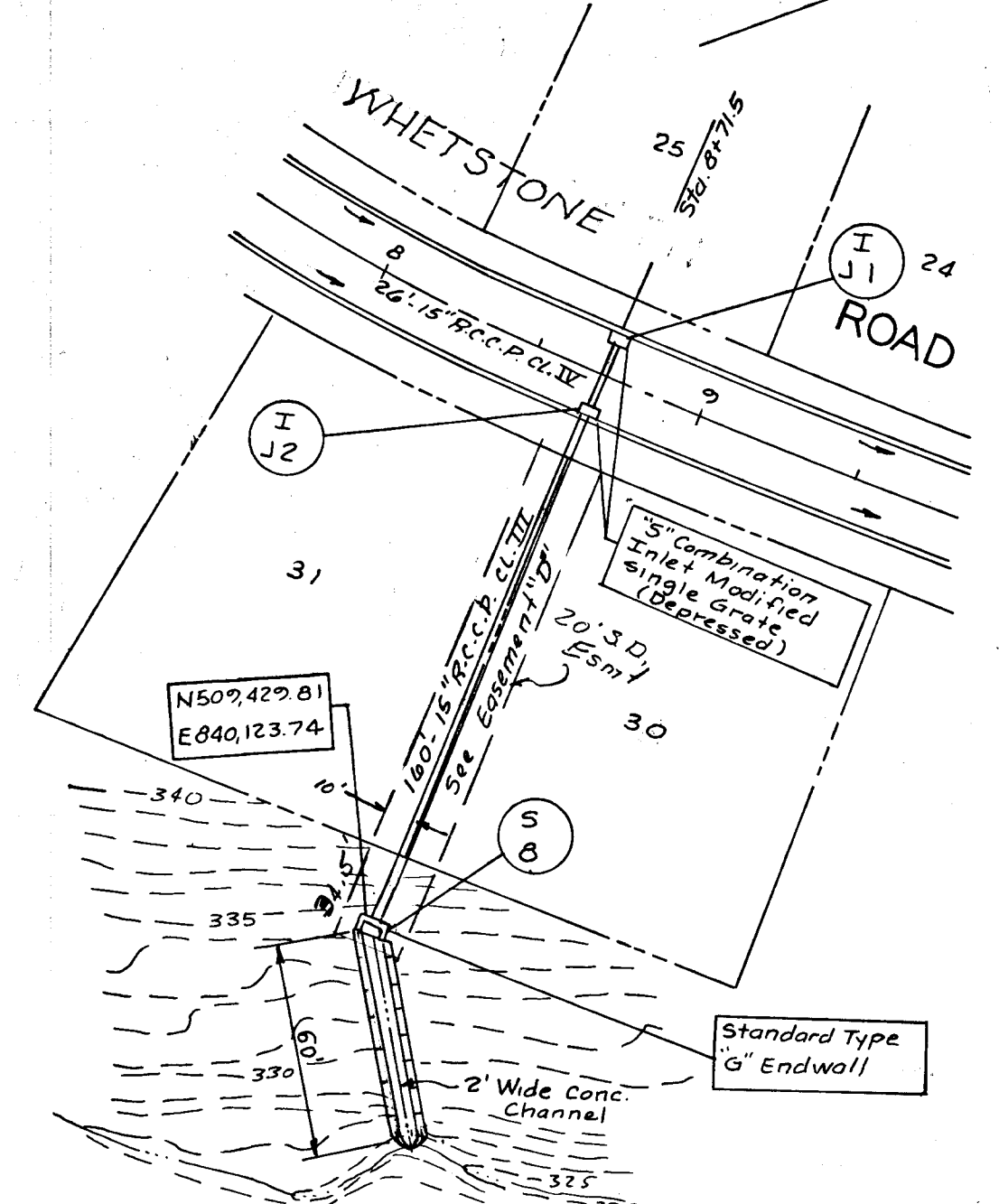
PROJECT AREA VILLAGE OF WILDE LAKE
 SECTION 9-RUNNING BROOK-AREA 3
 PROJECT TITLE STORM DRAINS SYSTEMS "A" & "Q"

Des By P.K. Scale Hor. 1"=50' Dwg No 8 of 10
 Drn By J.G.M. Date 7/1/67 C.C.F. No
 Chk By K.J.S. Approved

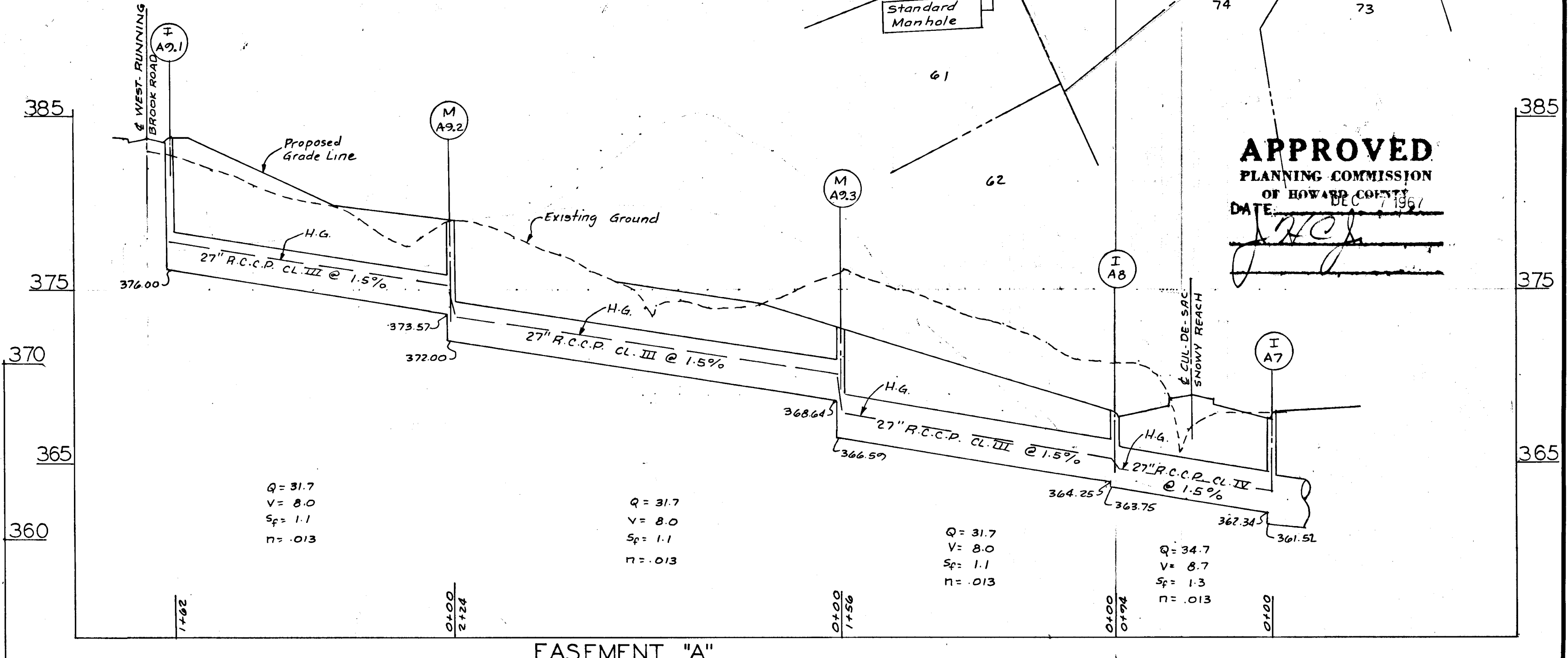
Note:
 For construction details other than those shown on sheet 10 of 10, refer to Howard County Road Construction Code and Standard Specifications.
 1. For Standard Manhole Drawing D-103, p.150
 2. For Class "S" Combination Inlet (Double Grate Tandem) Drawing D-102, p.157
 3. For Standard "G" Concrete Headwall Drawing D-61, p.116.



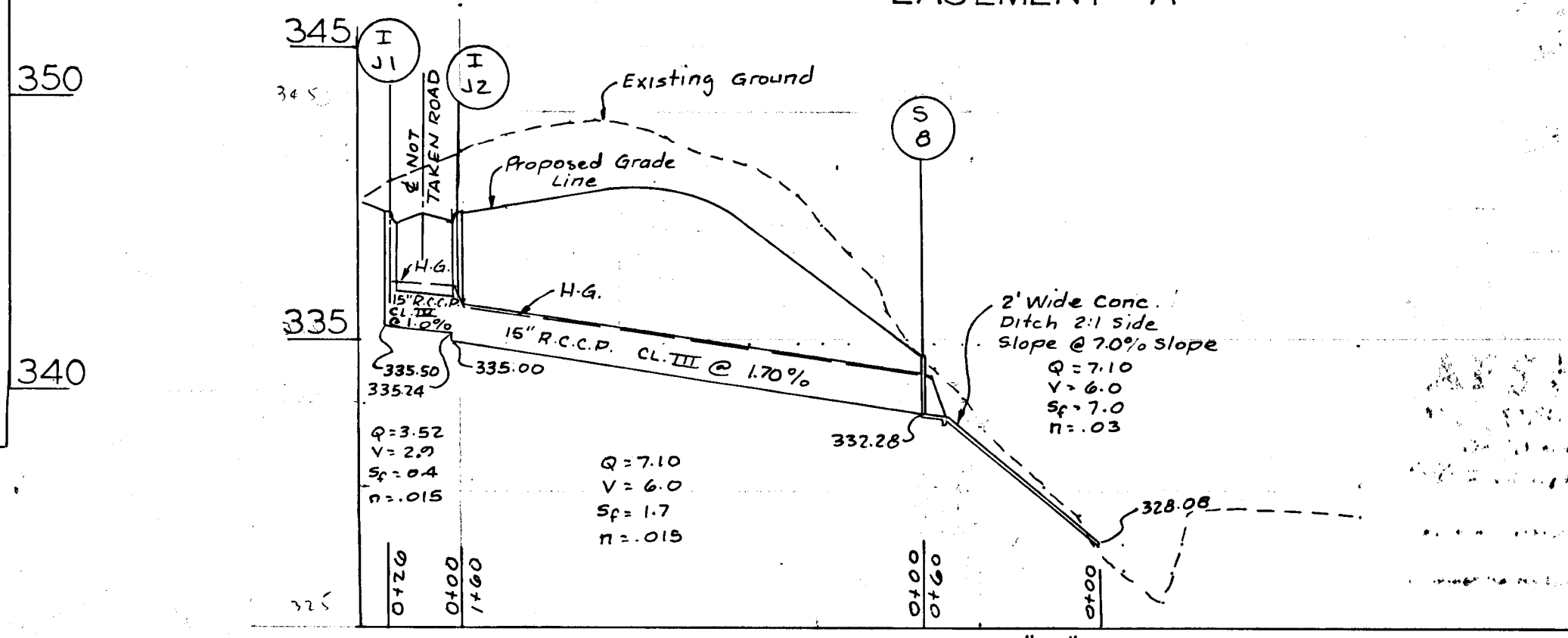
EASEMENT "C"



EASEMENT "B"



EASEMENT "A"



EASEMENT "D"

APPROVED
 PLANNING COMMISSION
 OF HOWARD COUNTY
 DATE: 7/10/67

Rev Date	Rev No	Revision Description

COLUMBIA
 MARYLAND

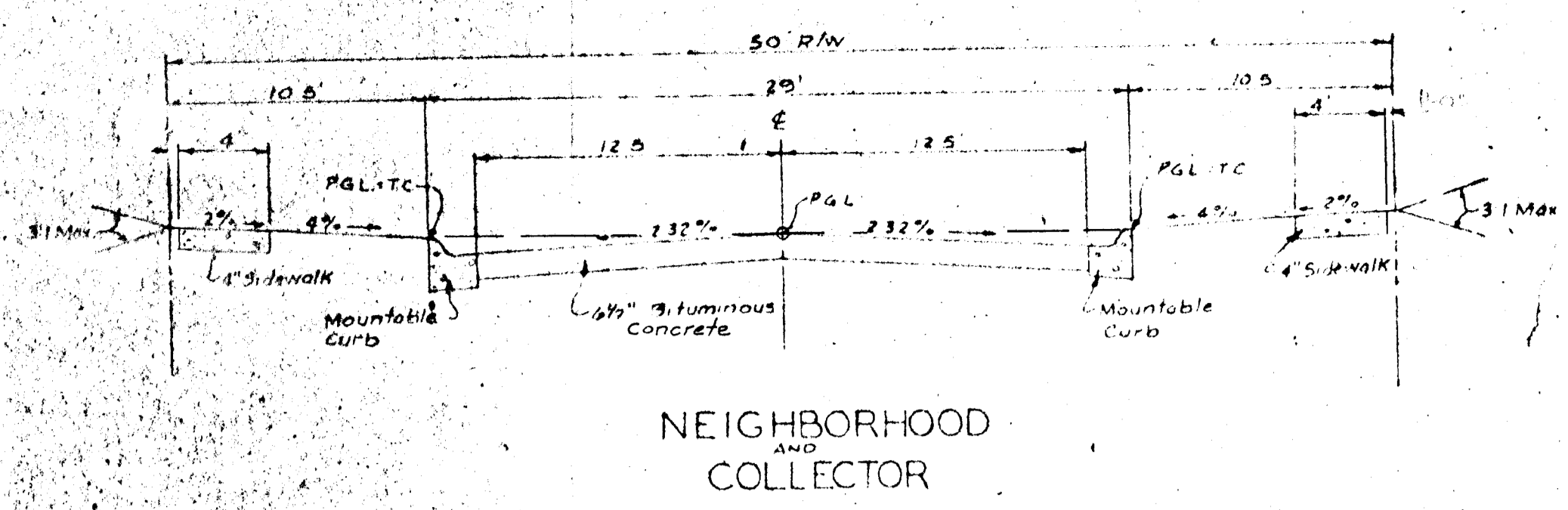
THE ROUSE COMPANY THE VILLAGE OF CROSS KEYS, BALTIMORE, MARYLAND 21210

PROJECT AREA VILLAGE OF WILDE LAKE
 SECTION 9-RUNNING BROOK-AREA 3

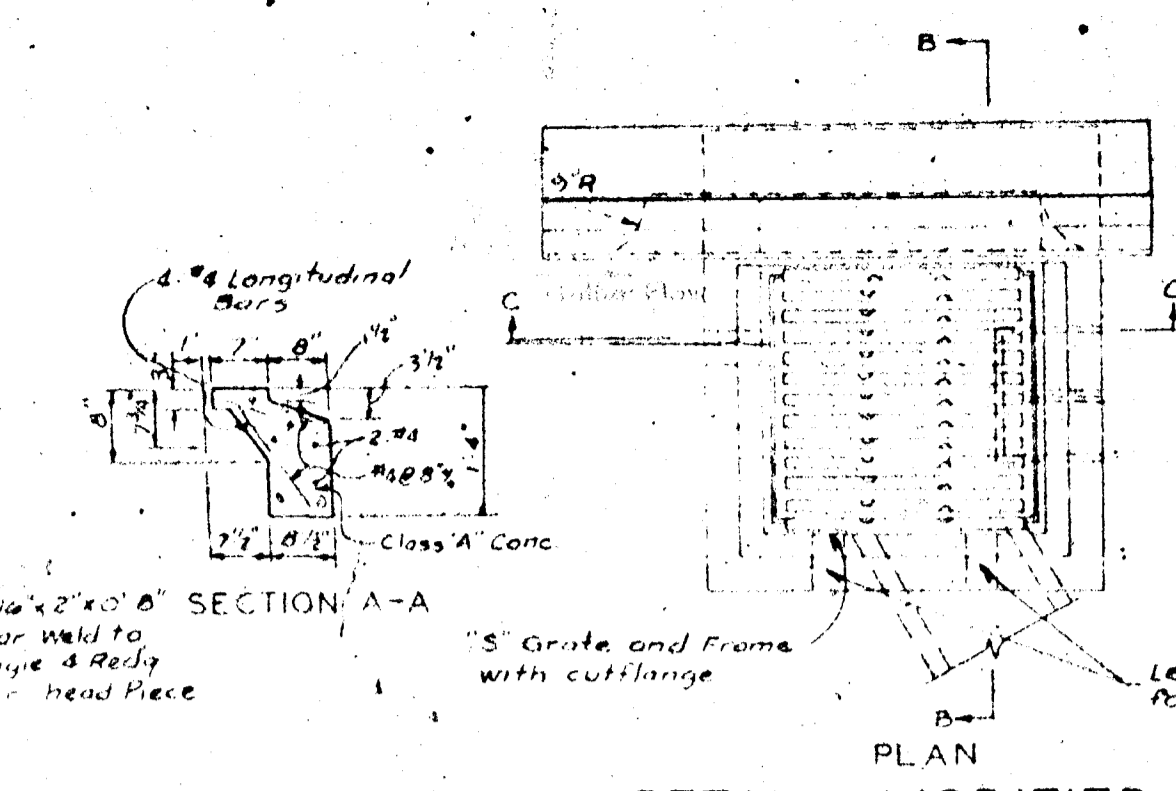
PROJECT TITLE STORM DRAINS SYSTEMS "A" & "J"

Des By P.K. Scale 1/4" = 1'-0" Dwg No 90410
 Drn By J.G.M. Date 7/11/67 C.C.F. No
 Chk By K.J.S. Approved 5/9/67

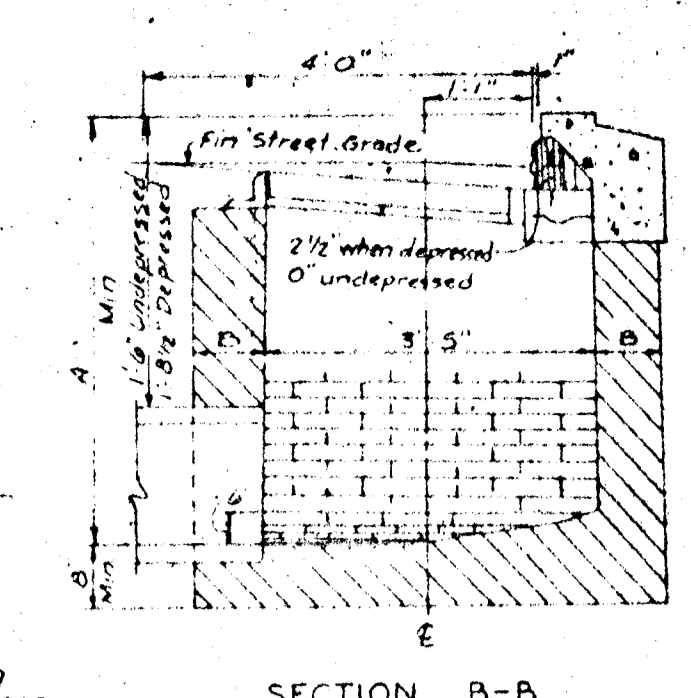
E-2145
 SHEET 10
 N.W. Section 9 - Running Brook Area



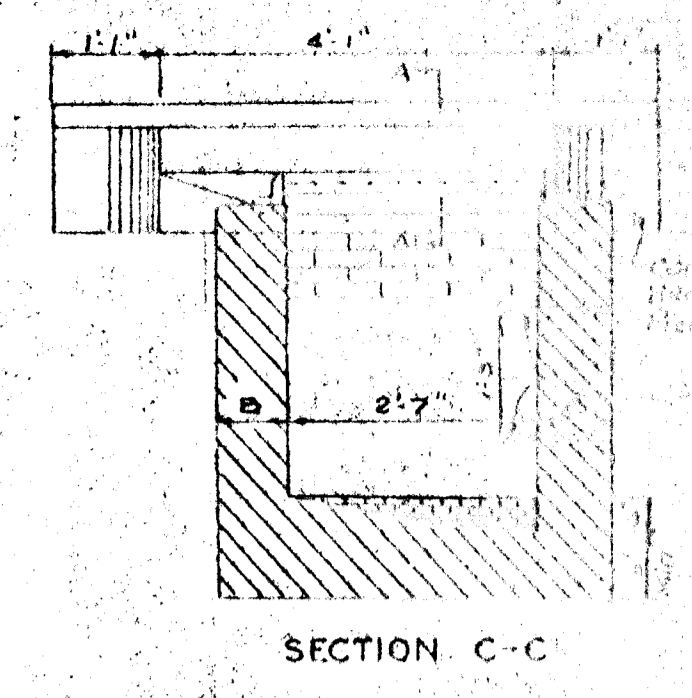
NEIGHBORHOOD AND COLLECTOR



DETAIL - MODIFIED "S" COMBINATION INLET (SINGLE GRATE)
NO SCALE

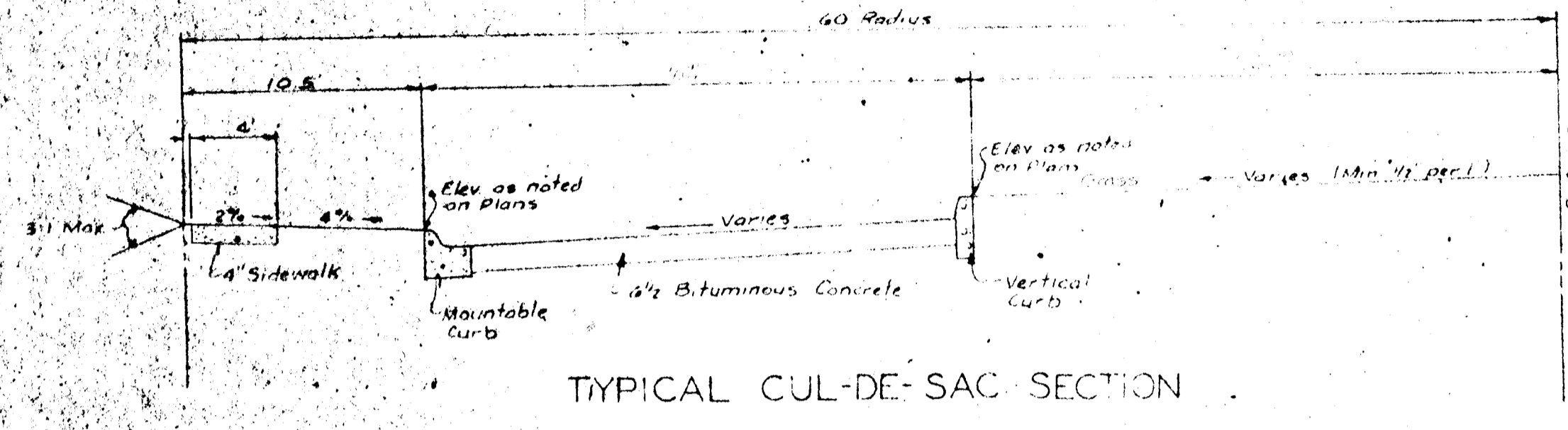


SECTION B-B



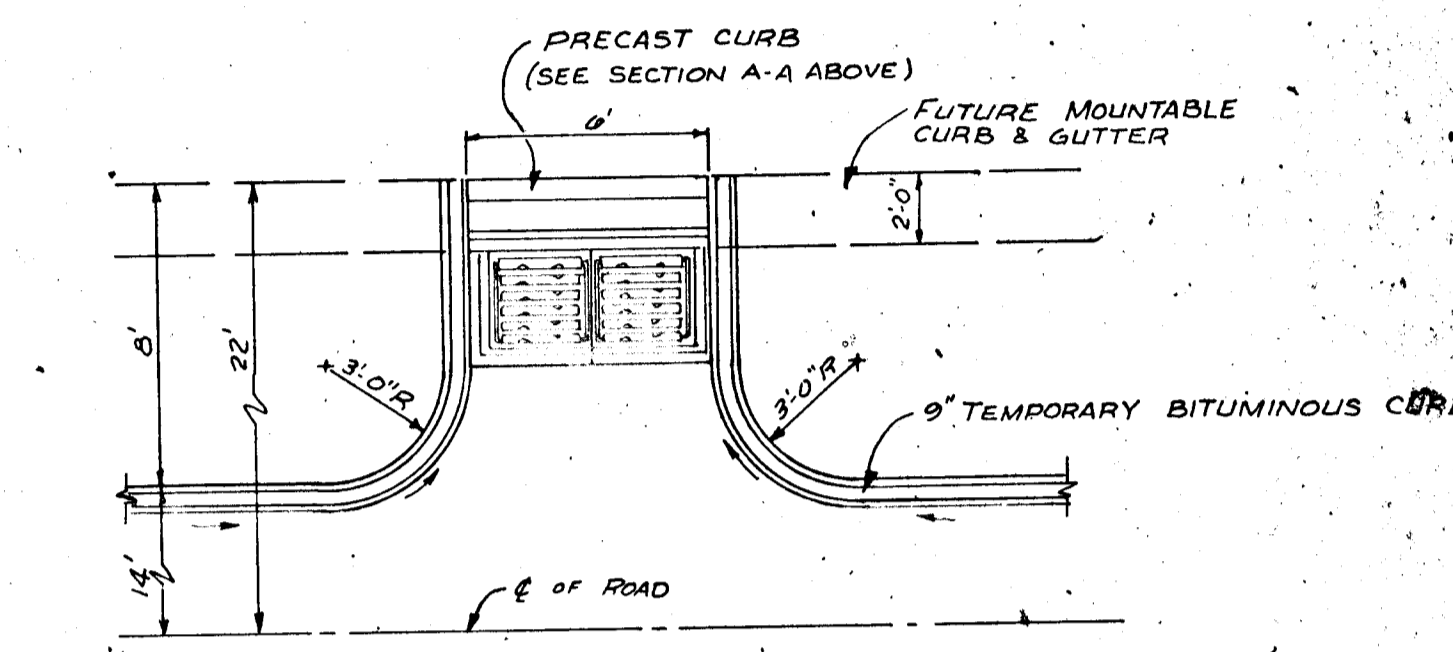
SECTION C-C

Notes:
 1) The walls and bottom of the inlet shall be finished with a smooth surface.
 2) The inlet shall be finished with a smooth surface.
 3) The inlet shall be finished with a smooth surface.
 4) The inlet shall be finished with a smooth surface.
 5) The inlet shall be finished with a smooth surface.

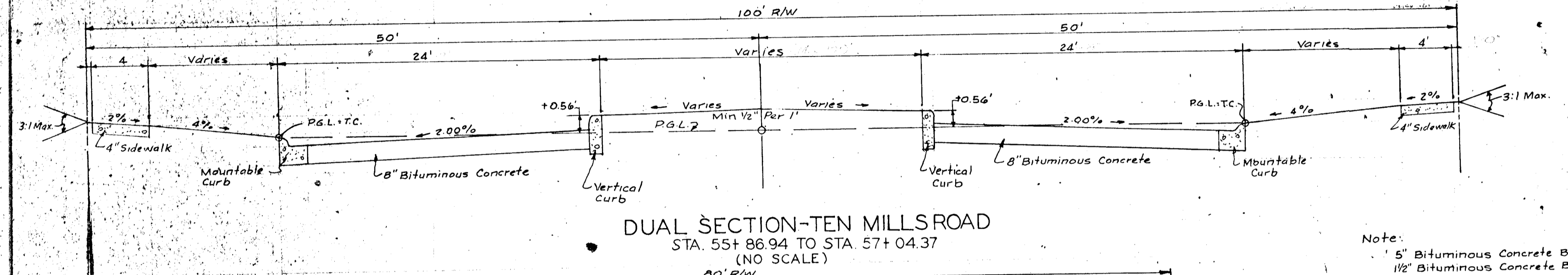


TYPICAL CUL-DE-SAC SECTION

Note:
 1) 5" Bituminous Concrete Base Course
 1/2" Bituminous Concrete Surface Course
 This surface type to be constructed in accordance with the Howard County Road Construction Code and Specifications Dwg. D114, R14, D15d
 2) All roadway dimensions and curb radius as shown are to the back of curb.

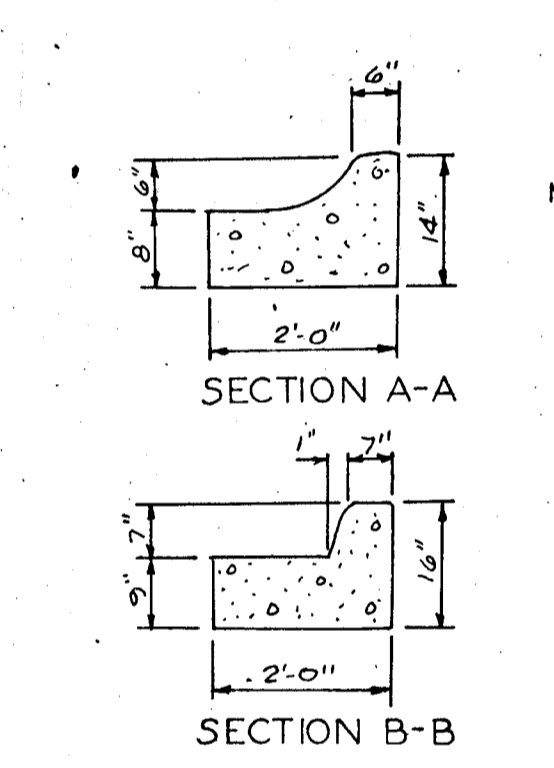


SPECIAL DETAIL INLET LOCATION FOR FUTURE ROAD WIDENING
(NO SCALE)



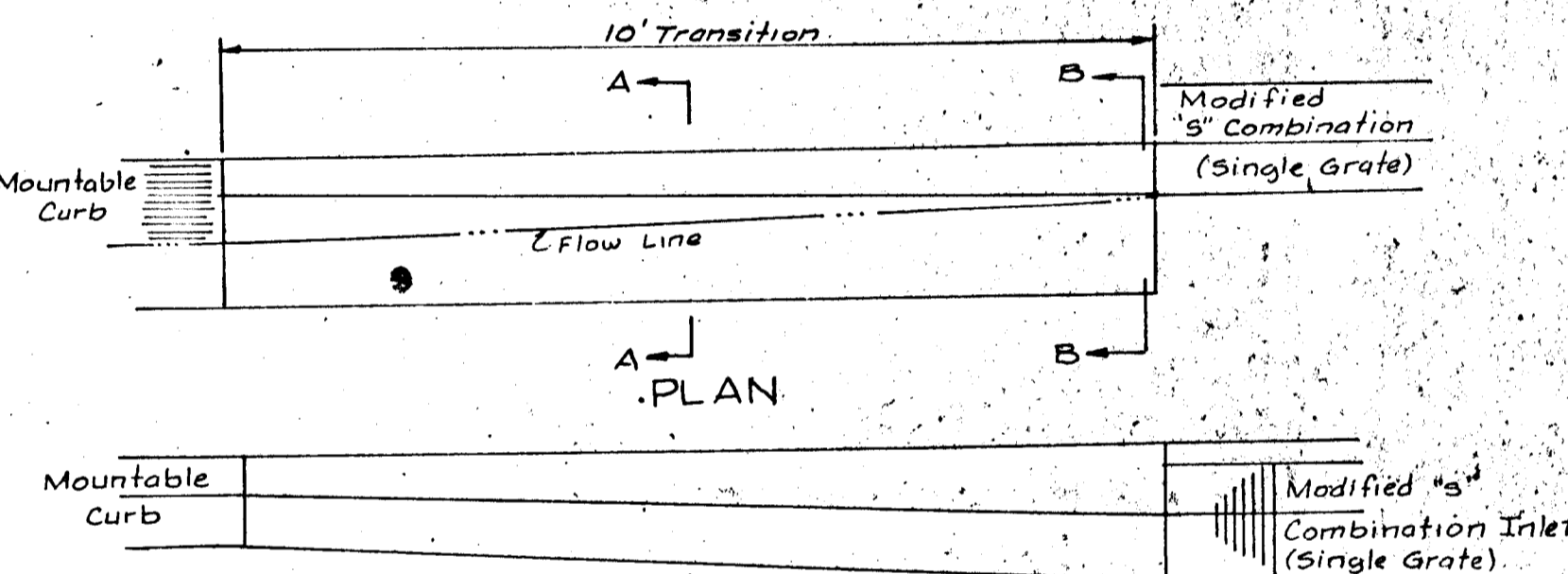
DUAL SECTION-TEN MILLS ROAD
STA. 55+86.94 TO STA. 57+04.37
(NO SCALE)

Note:
 5" Bituminous Concrete Base Course
 1/2" Bituminous Concrete Binder Course
 1 1/2" Bituminous Concrete Surface Course
 This surface type to be constructed in accordance with the Howard County Road Construction Code and Specifications, Dwg. D113, p. 108C.

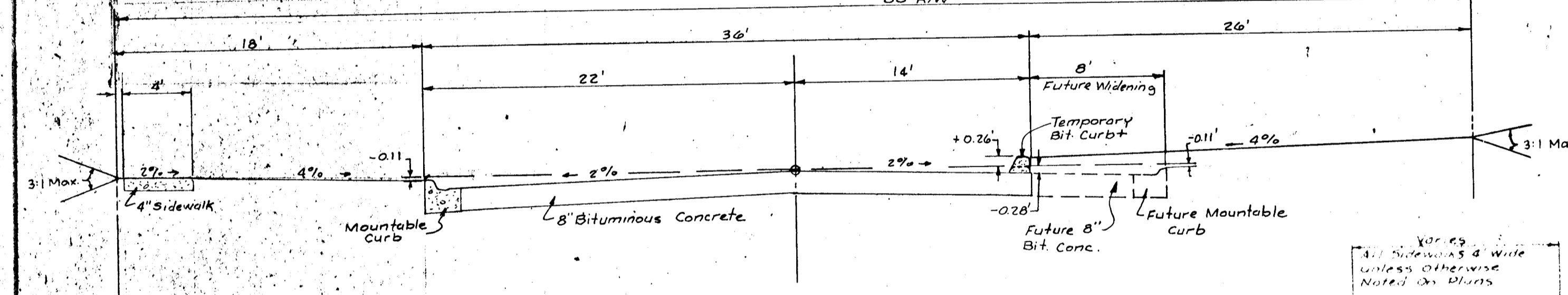


SECTION A-A

SECTION B-B



CURB TRANSITION DETAIL
NO SCALE



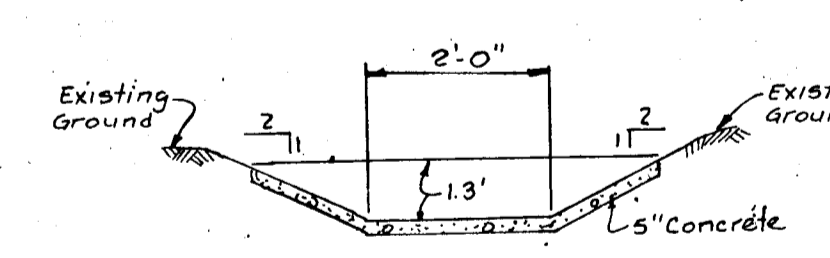
44' ROAD SECTION
TEN MILLS ROAD
(NO SCALE)

+ NOTE:
 Temporary Bit Curb to be 6 1/2" high. At driveways construct curb 2" high. Location to be furnished at time of construction by engineer. See HOWARD COUNTY ROAD CONSTRUCTION CODE & SPEC. DWG. D-39, p. 94

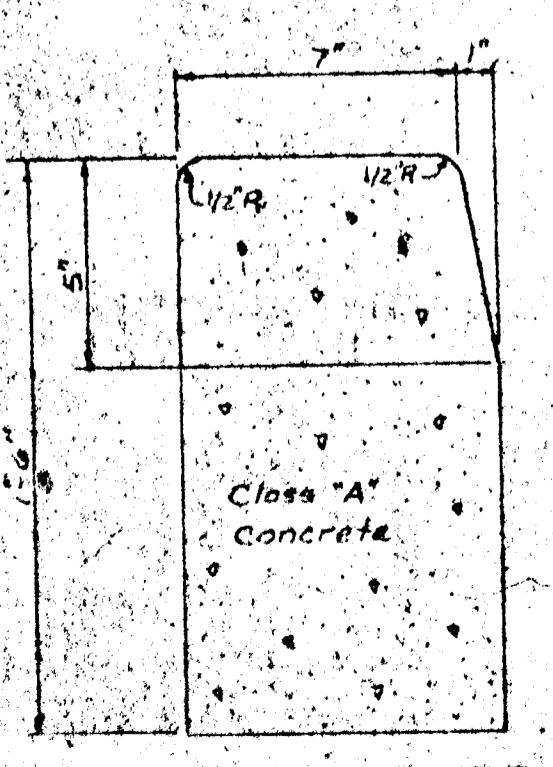
Note:
 Sidewalk shall be 6" high at driveways. Location to be furnished at time of construction by engineer.

Class "A" Concrete
 Howard Research Development will construct standard Howard Co Portland Cement Concrete sidewalk as per alternate Design Approved by Howard County Public Department

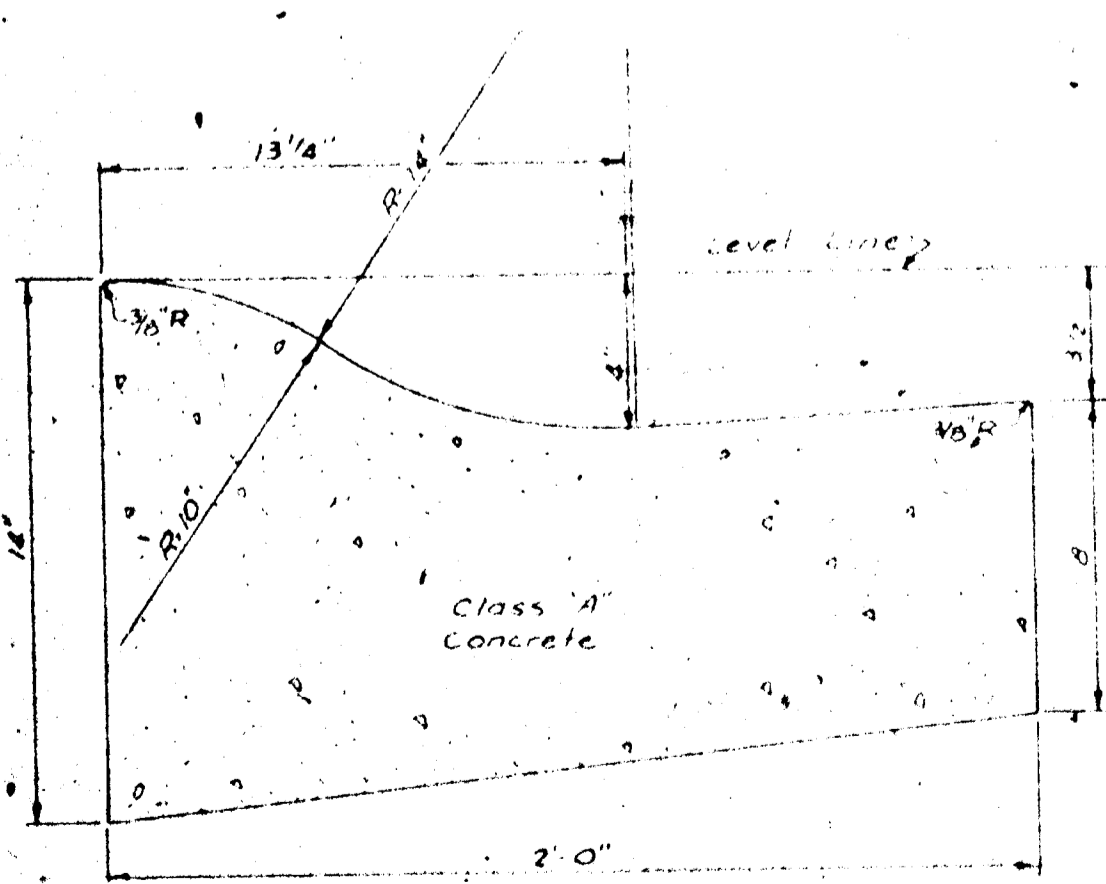
SIDEWALK
NO SCALE



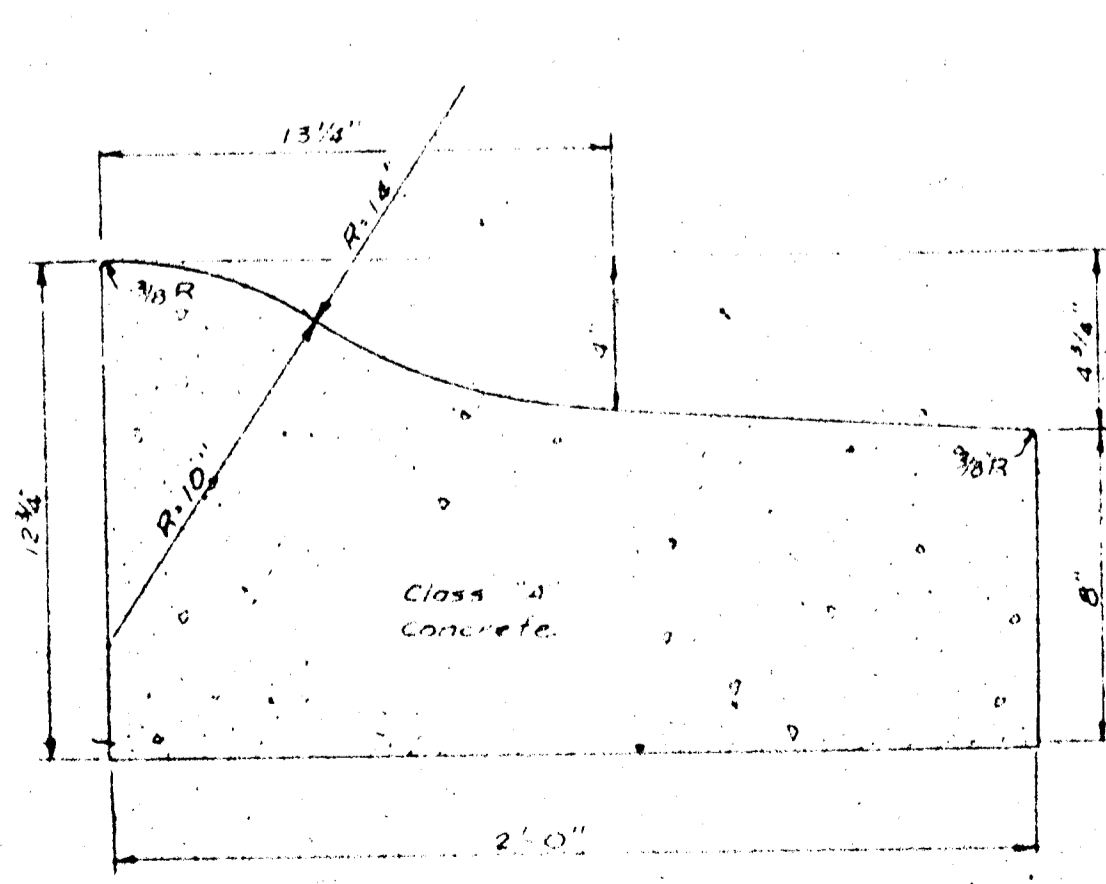
CHANNEL DETAIL
NO SCALE



VERTICAL CURB
NO SCALE



TYPICAL MOUNTABLE CURB & GUTTER DETAILS
NO SCALE



REVERSED GUTTER FLAG

LEGEND
 (TC.4000) Top of curb in elev.
 (TG.4000) Top of grate in elev.

Rev Date	Rev No	Revision Description

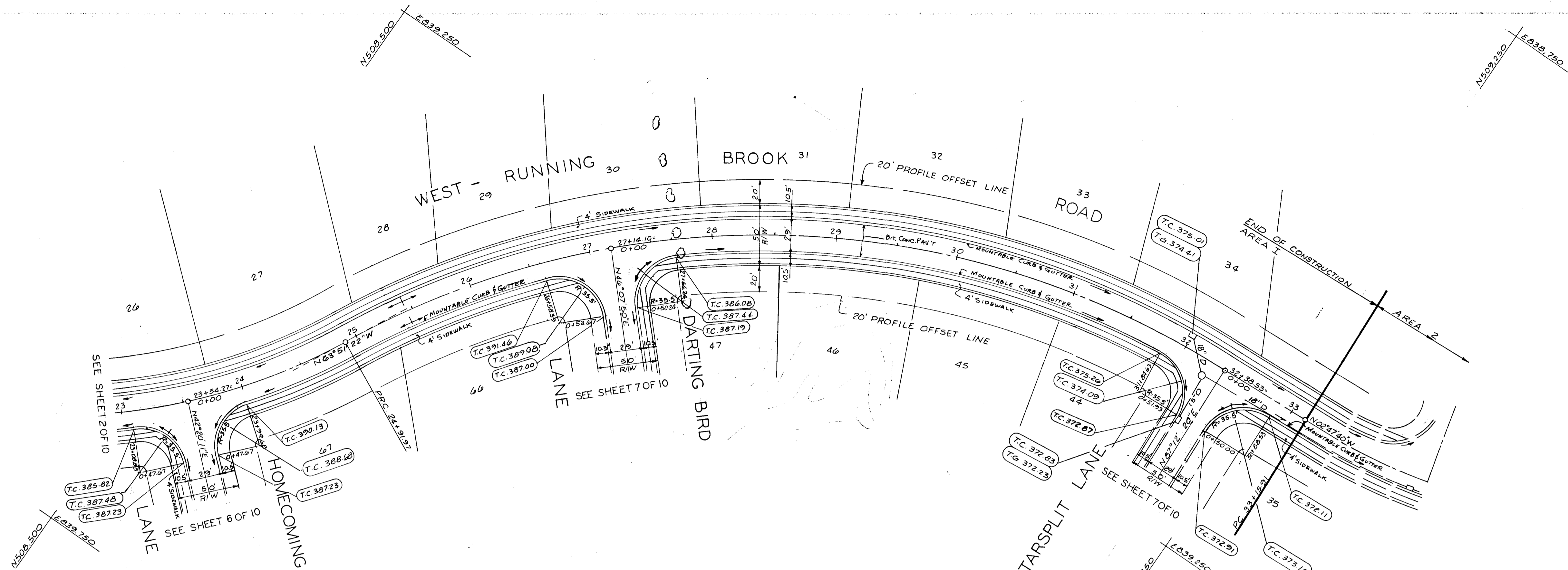
COLUMBIA
MARYLAND

THE ROUSE COMPANY
12400 WOODBINE DRIVE, BETHESDA, MARYLAND 20814

PROJECT AREA VILLAGE OF WILDE LAKE
SECTION 9-RUNNING BROOK-AREA 3
PROJECT TITLE TYPICAL SECTIONS & CONSTRUCTION DETAILS

Des By	P.K.	Date	As shown
Des By	J.G.M.	Date	11/67
CHK By	K.J.S.	Date	8/97

APPROVED
 PLANNING COMMISSION
 DATE 11/1/67

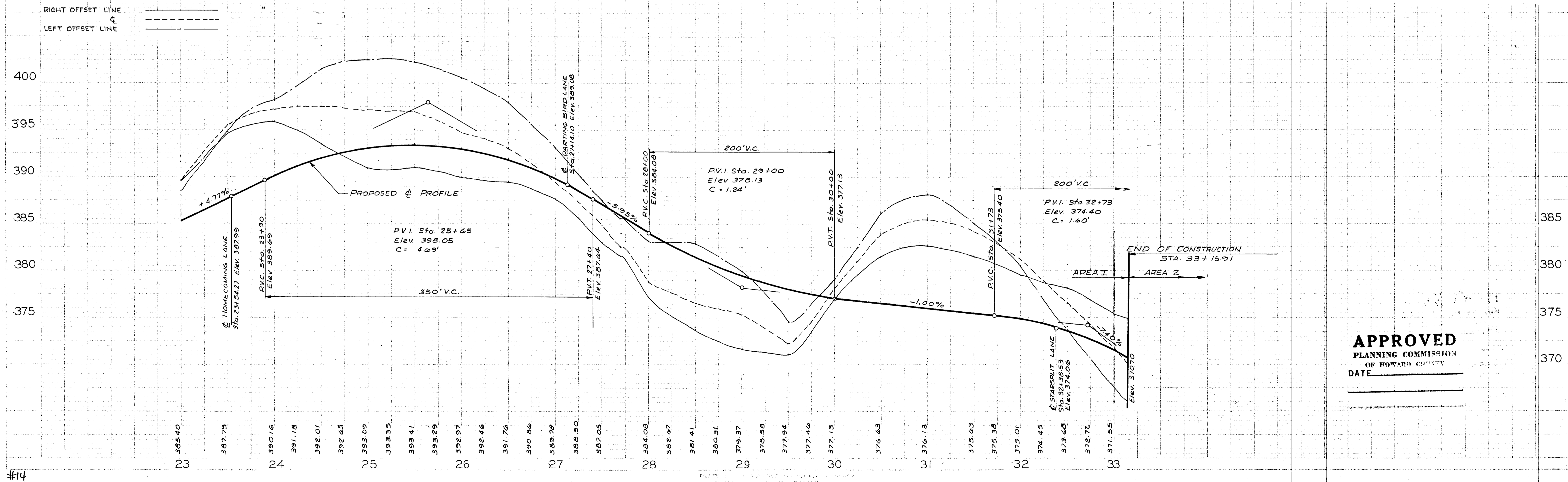


CURVE DATA
 STA. 21+20.85 TO 24+91.97
 $\Delta = 43^\circ 38' 21''$
 $R = 487.25'$
 $L = 371.12'$
 $T = 195.08'$

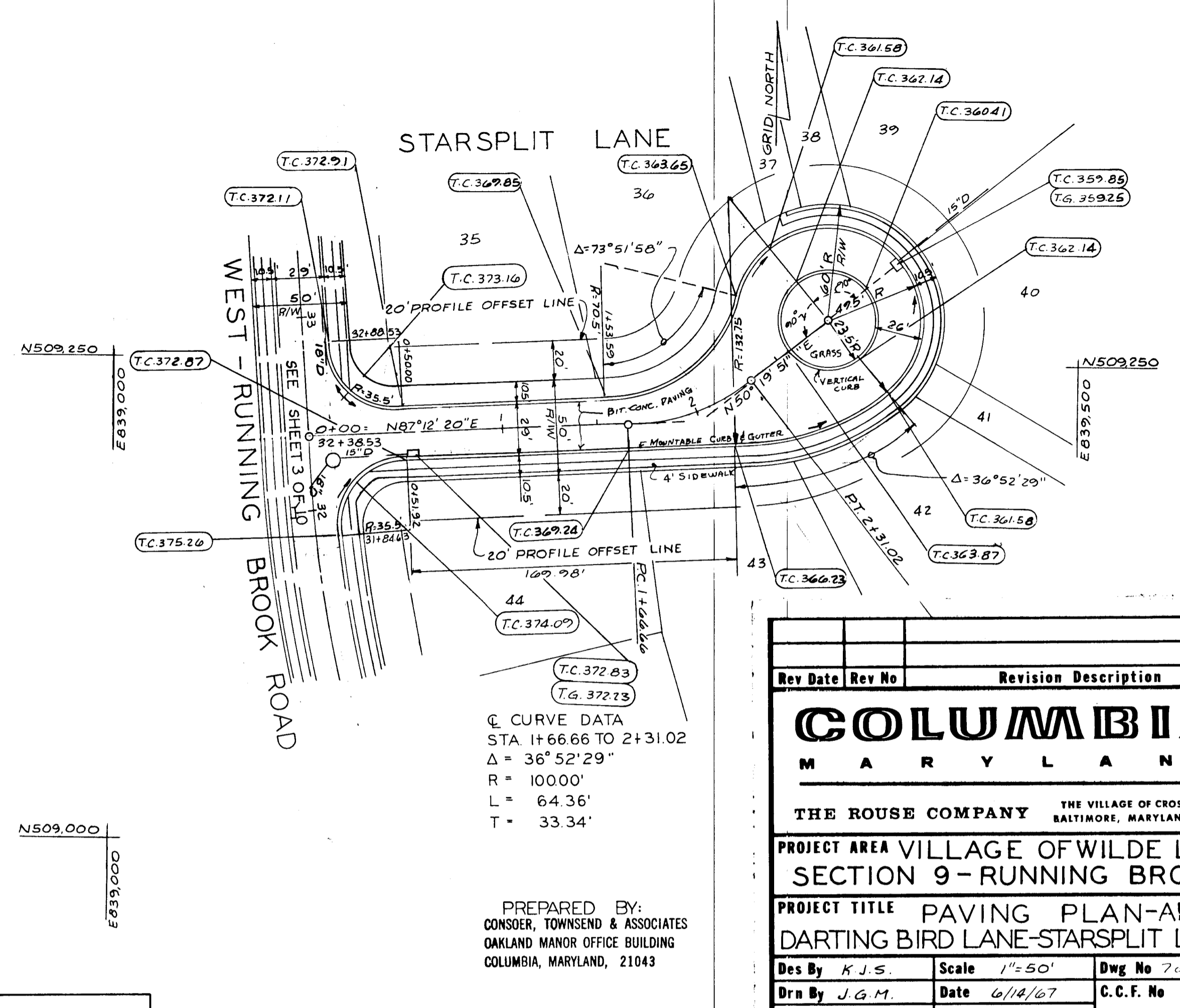
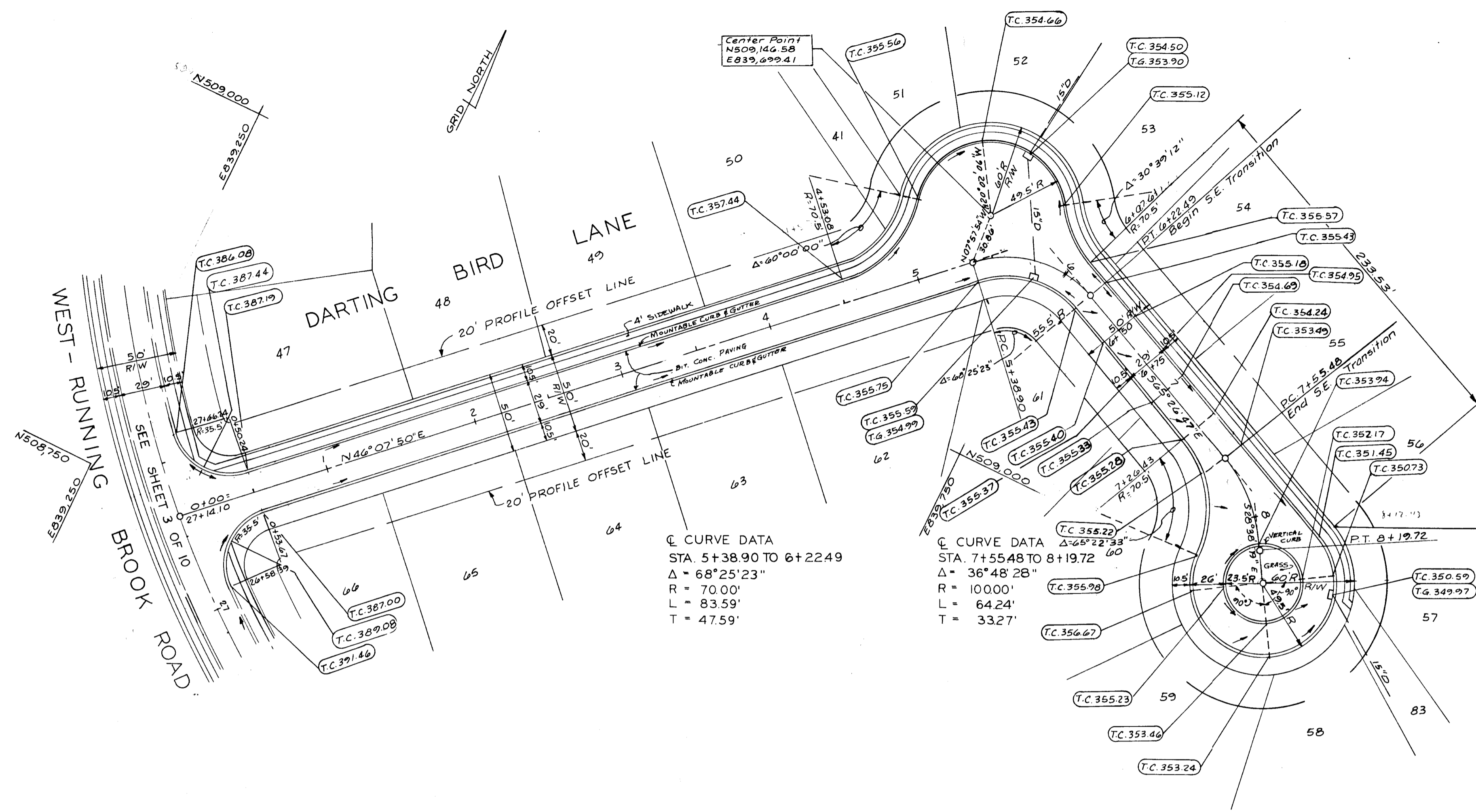
CURVE DATA
 STA. 24+91.97 TO 32+38.53
 $\Delta = 61^\circ 03' 42''$
 $R = 700.52'$
 $L = 746.56'$
 $T = 413.15'$

APPROVED
 PLANNING COMMISSION
 OF HOWARD COUNTY
 DATE 12-1-67
PK

Rev Date	Rev No	Revision Description
COLUMBIA		
M A R Y L A N D		
THE ROUSE COMPANY THE VILLAGE OF CROSS KEYS, BALTIMORE, MARYLAND 21210		
PROJECT AREA VILLAGE OF WILDE LAKE SECTION 9 - RUNNING BROOK		
PROJECT TITLE PAVING PLAN-AREA I WEST-RUNNING BROOK		
Des By	K.J.S.	Scale 1"=50'
Drn By	J.G.M.	Date 6/14/67
Chk By	P.K.	Approved (PK)
Dwg No	3 of 10	C.C.F. No



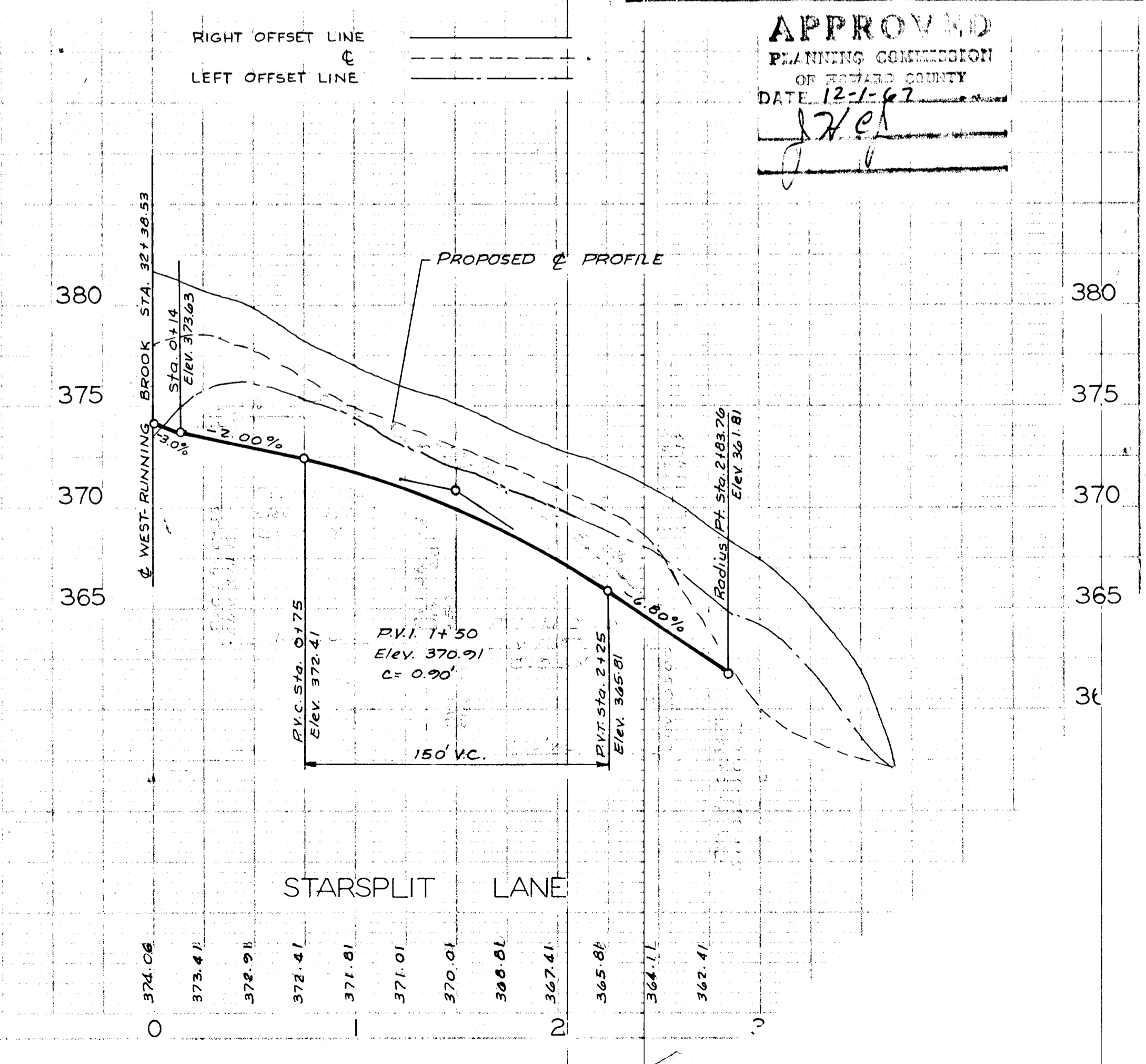
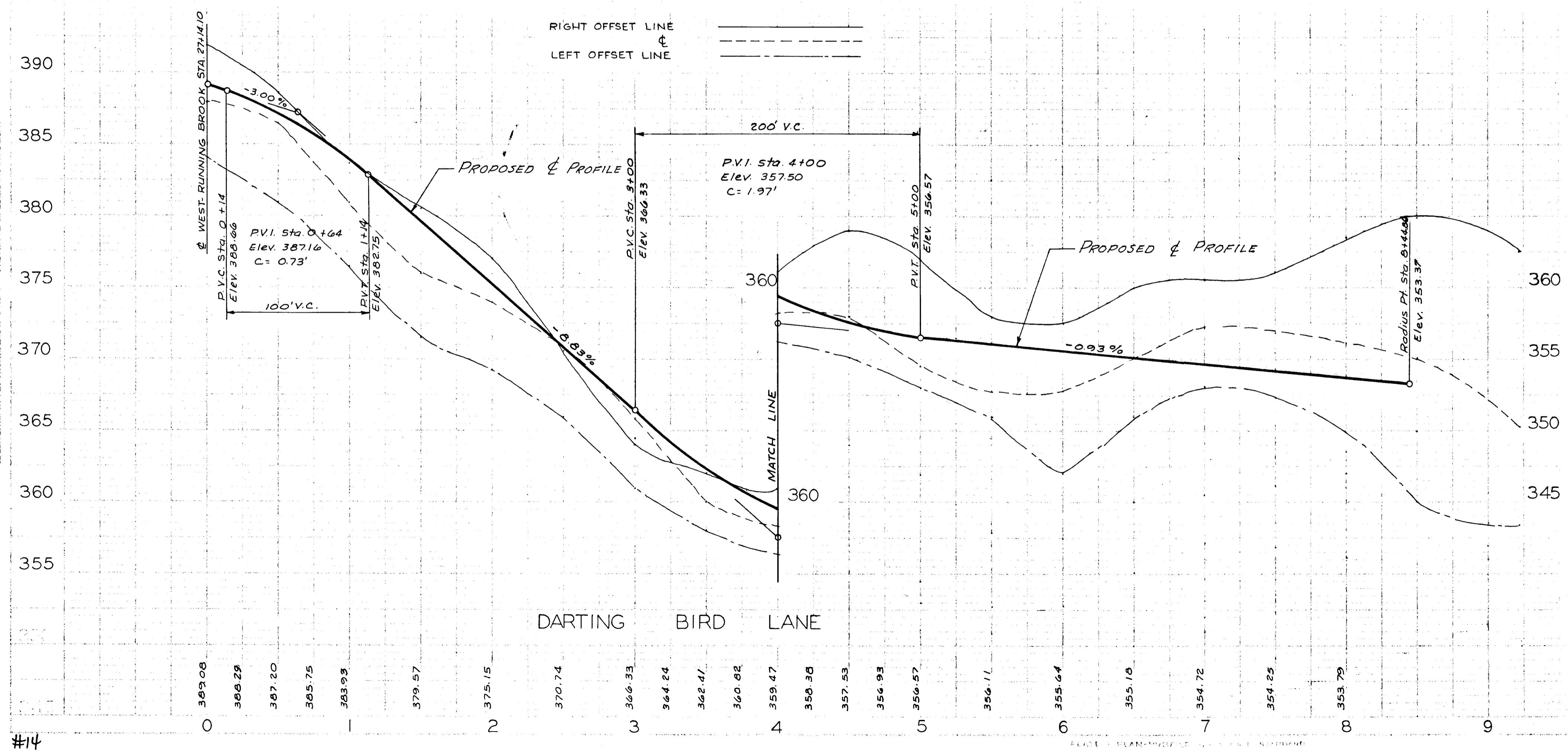
APPROVED
 PLANNING COMMISSION
 OF HOWARD COUNTY
 DATE _____



Rev Date	Rev No	Revision Description
COLUMBIA MARYLAND		
THE ROUSE COMPANY THE VILLAGE OF CROSS KEYS, BALTIMORE, MARYLAND 21210		
PROJECT AREA VILLAGE OF WILDE LAKE SECTION 9-RUNNING BROOK		
PROJECT TITLE PAVING PLAN-AREA I DARTING BIRD LANE-STARSPILT LANE		
Des By	K.J.S.	Scale 1"=50'
Dwn By	J.G.M.	Date 6/18/67
Chk By	P.K.	Approved [Signature]
		Dwg No 70410
		C.C.F. No

PREPARED BY:
CONSOER, TOWNSEND & ASSOCIATES
OAKLAND MANOR OFFICE BUILDING
COLUMBIA, MARYLAND, 21043

APPROVED
PLANNING COMMISSION
OF SEWARD COUNTY
DATE 12-1-67
[Signature]



#14