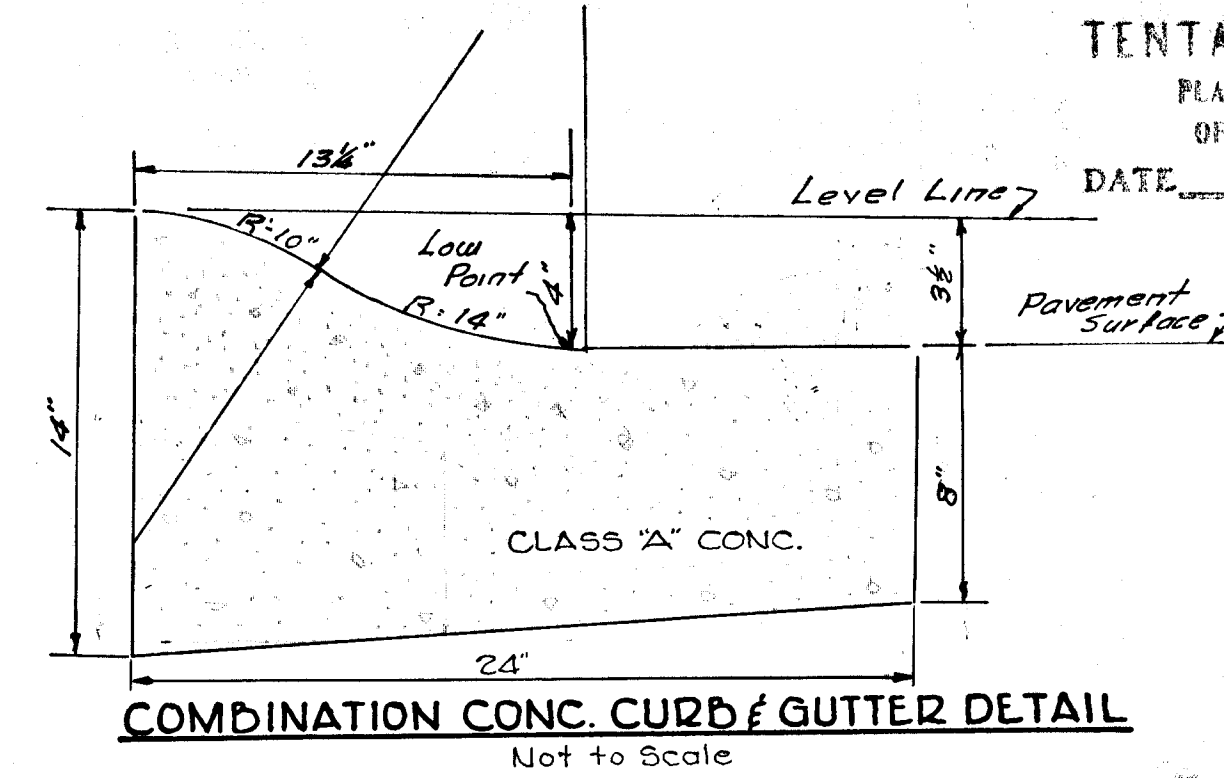
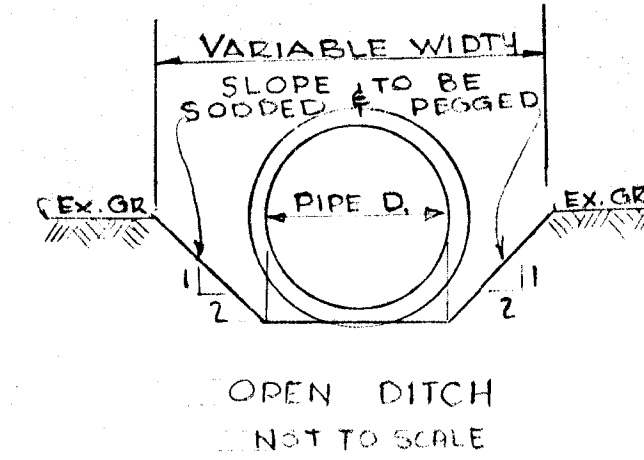
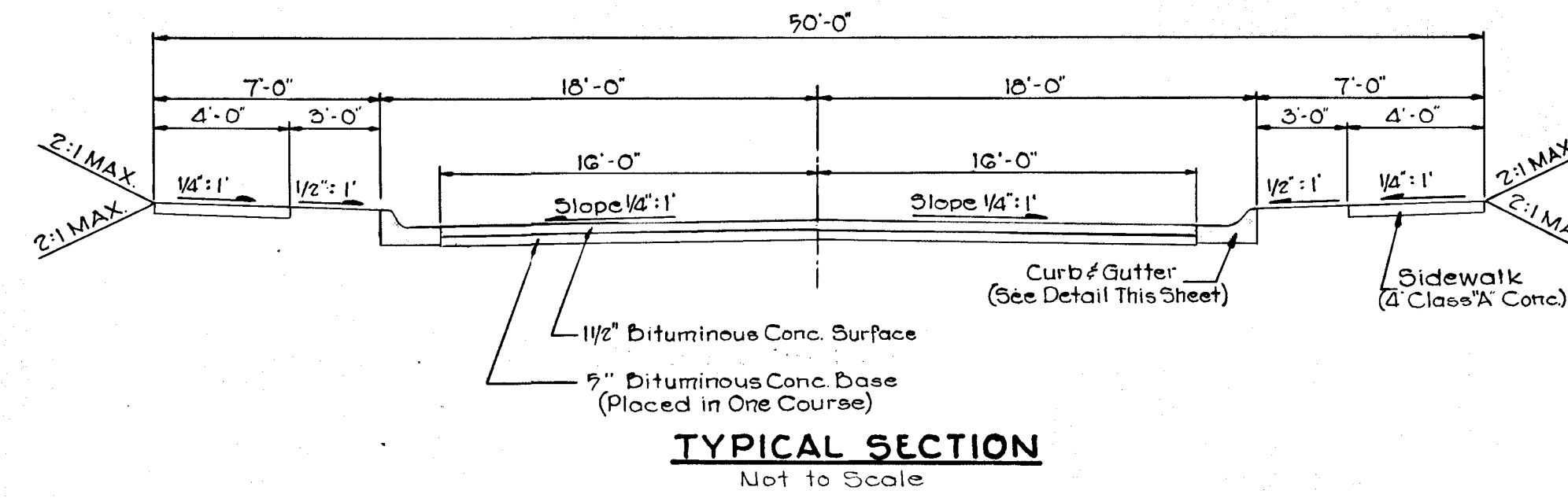
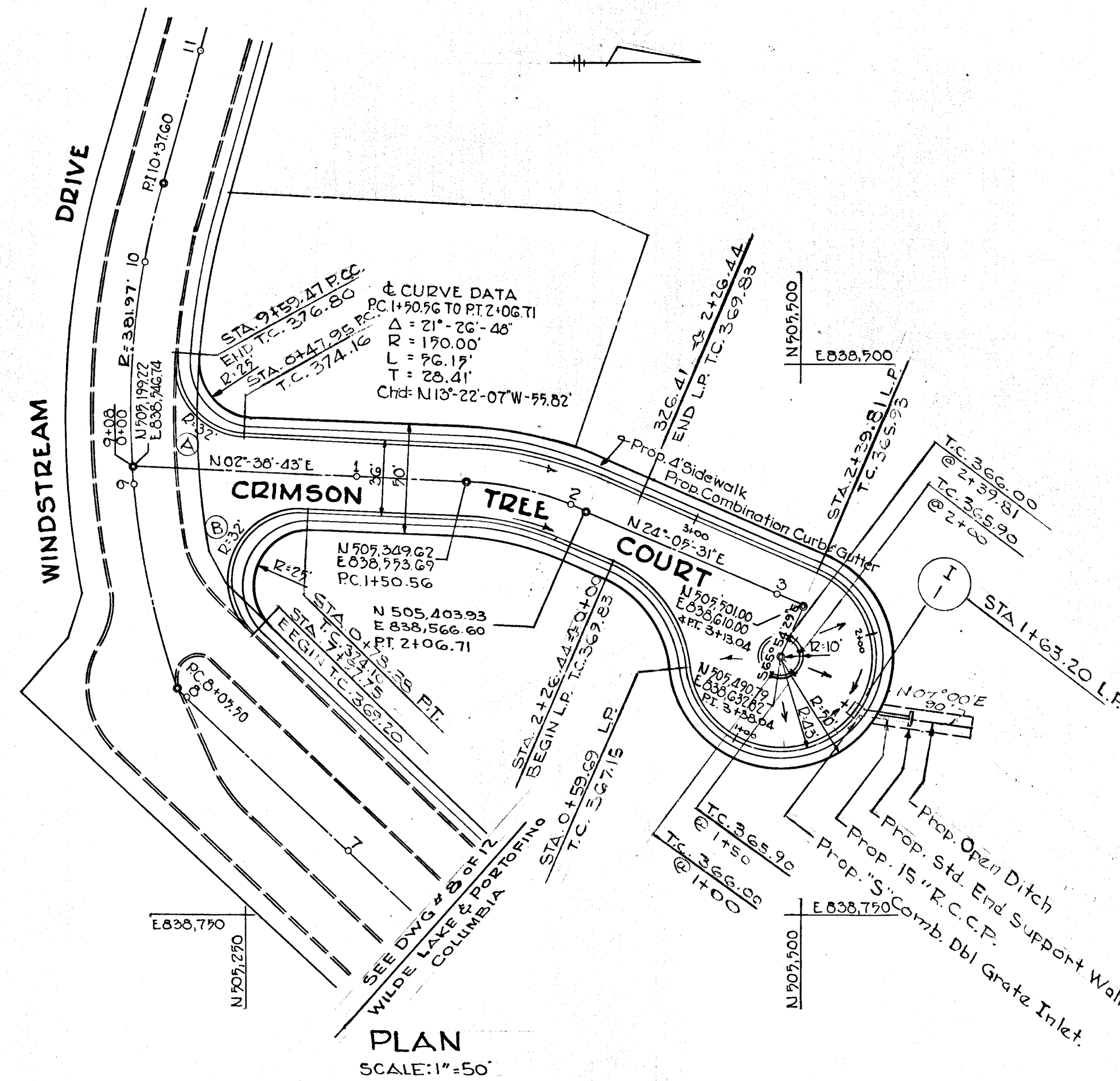


GENERAL NOTES

- 1) FOR ROADWAY SECTION OF CRIMSON TREE COURT - SEE DETAIL THIS SHEET.
- 2) FOR DETAIL OF COMBINATION CONCRETE CURB AND GUTTER SEE DETAIL THIS SHEET.
- 3) FOR DETAIL OF A "S" COMBINATION DBL. GRATE INLET AND A STANDARD END SUPPORT WALL - SEE SPECIAL DETAILS OF THE FOLLOWING DRAWINGS AND PAGE 5 OF HOWARD COUNTY ROAD CONSTRUCTION CODE AND STANDARD SPECIFICATIONS.
- 4) 9" S" COMBINATION DBL. GRATE - DRAWING D-99 PAGE 15.4
- 5) STD. END SUPPORT WALL - DRAWING D-46, PAGE 101
- 6) FOR DETAIL OF OPEN DITCH SEE DETAIL THIS SHEET.

(A)
CURVE DATA
R = 32.00'
Δ = 91°36'
L = 51.16'

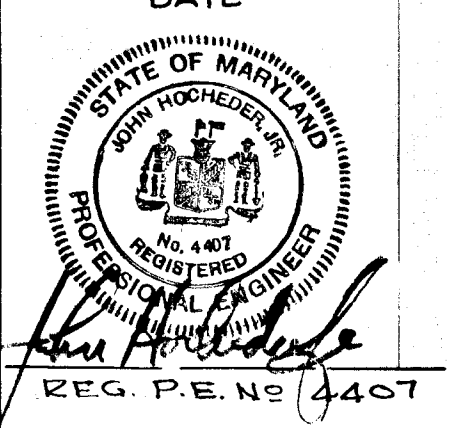
(B)
CURVE DATA
R = 32.00'
Δ = 138°27'08"
L = 77.33'



TENTATIVE APPROVAL
PLANNING COMMISSION
OF HOWARD COUNTY
DATE _____

APPROVED
PLANNING COMMISSION
OF HOWARD COUNTY
DATE 7-12-67

OWNER & DEVELOPER	ENGINEER
HOWARD RESEARCH & DEVELOPMENT CORP. THE VILLAGE OF CROSS KEYS BALTIMORE, MARYLAND	GEORGE W. STEPHENS JR & ASSOC 303 ALLEGHENY AVE. TOWSON, MARYLAND
APPROVED: HOWARD CO. PLANNING COMM.	MAY 22, 1967 DATE
<i>H. Cloutman</i> SENIOR ENGINEER	7-13-67 DATE
APPROVED: HOWARD CO. ROADS DEPT.	
<i>Granville W. Hubbard</i> ROAD SUPERINTENDENT	7-20-67 DATE
APPROVED: HOWARD CO. MET. COMM.	
<i>W. O. Roberts</i> CHIEF ENGINEER	8-11-67 DATE



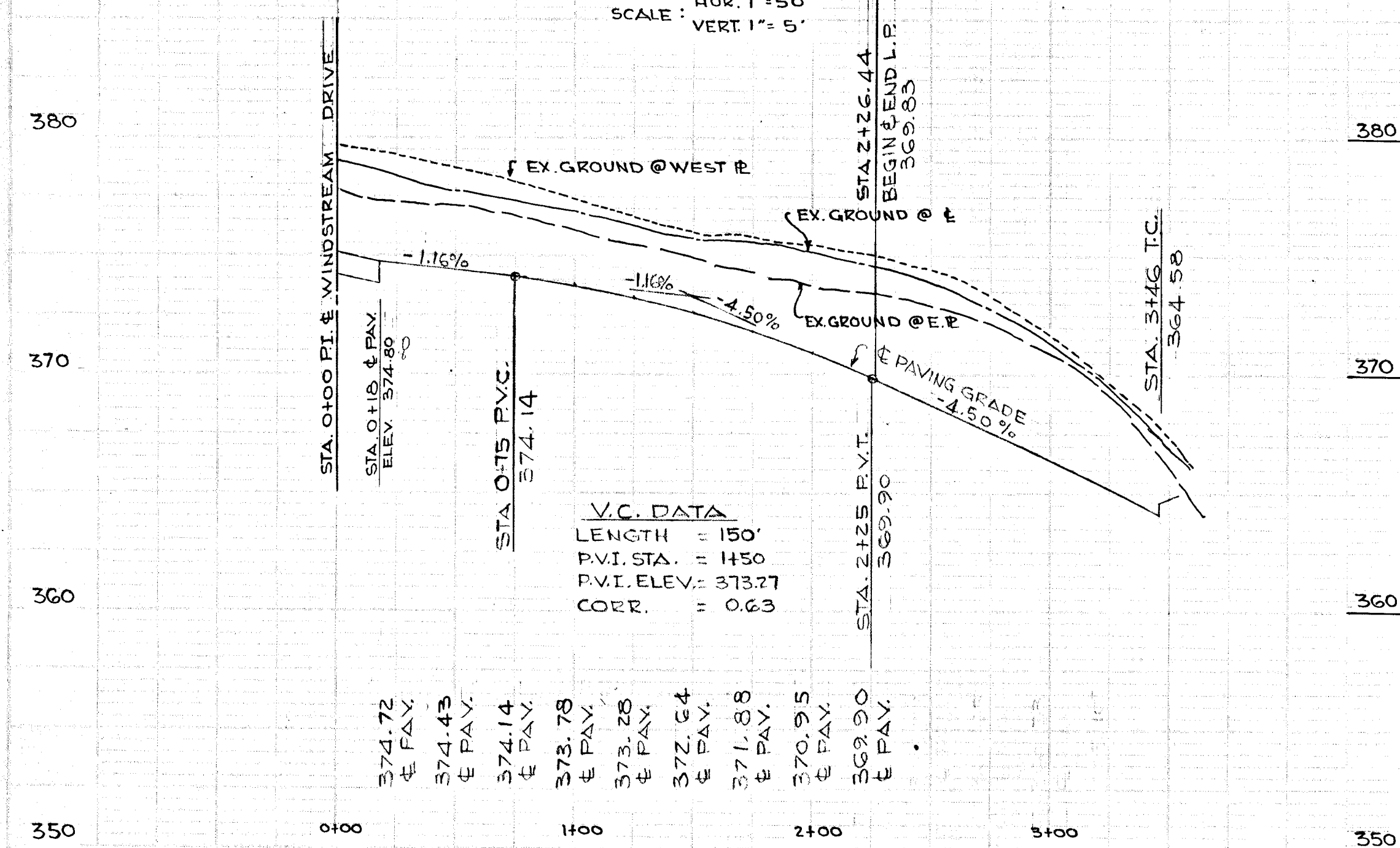
PLAN & PROFILE
CRIMSON TREE COURT
VILLAGE OF WILDE LAKE SUBDIVISION
SECTION SIX
COLUMBIA

HOWARD CO. MARYLAND
SCALE: AS SHOWN

ELECTION DIST # 5
MAY 29, 1967

CRIMSON TREE COURT

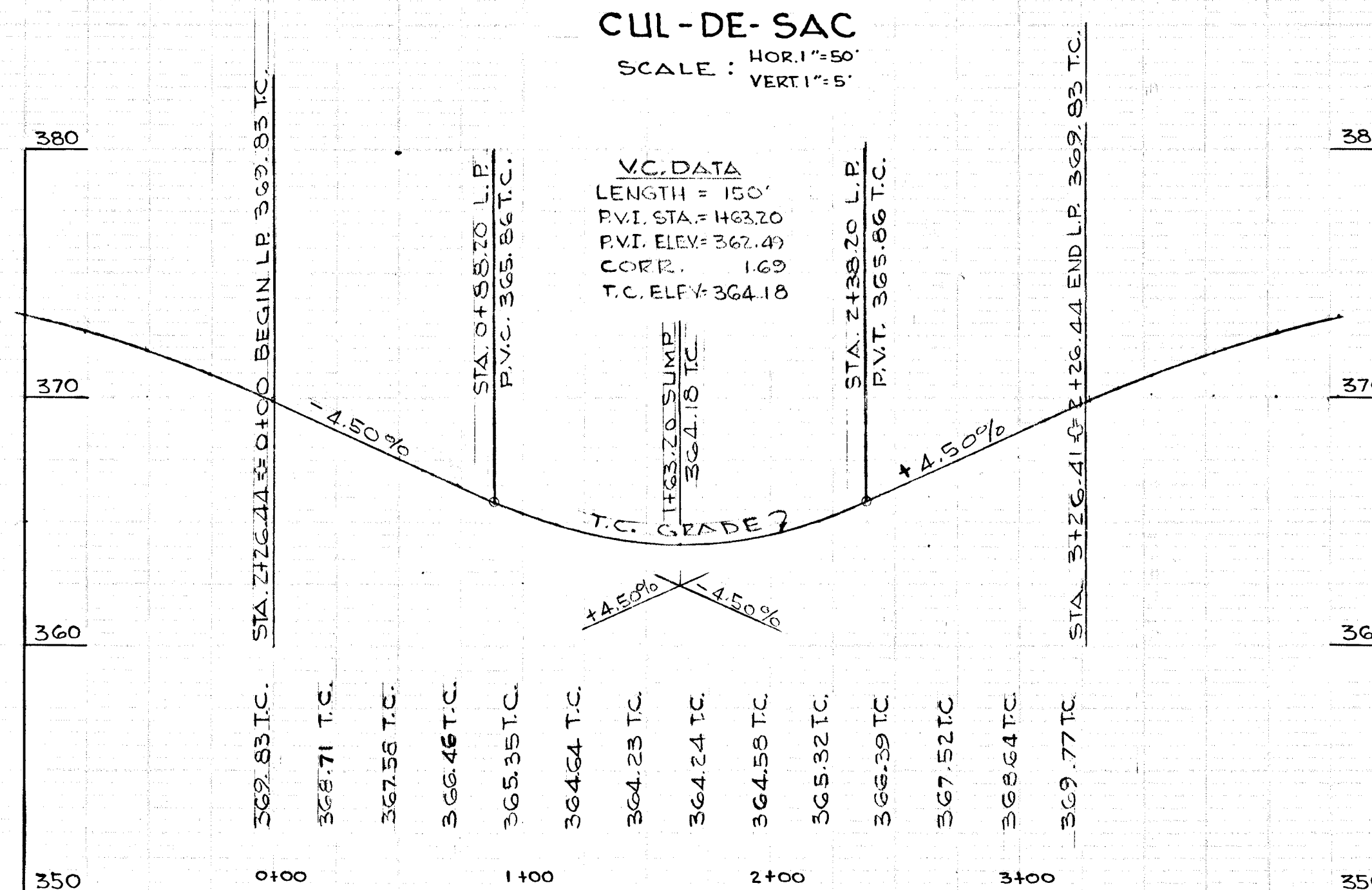
PROFILE
HOR. 1" = 50'
VERT. 1" = 5'



CRIMSON TREE COURT

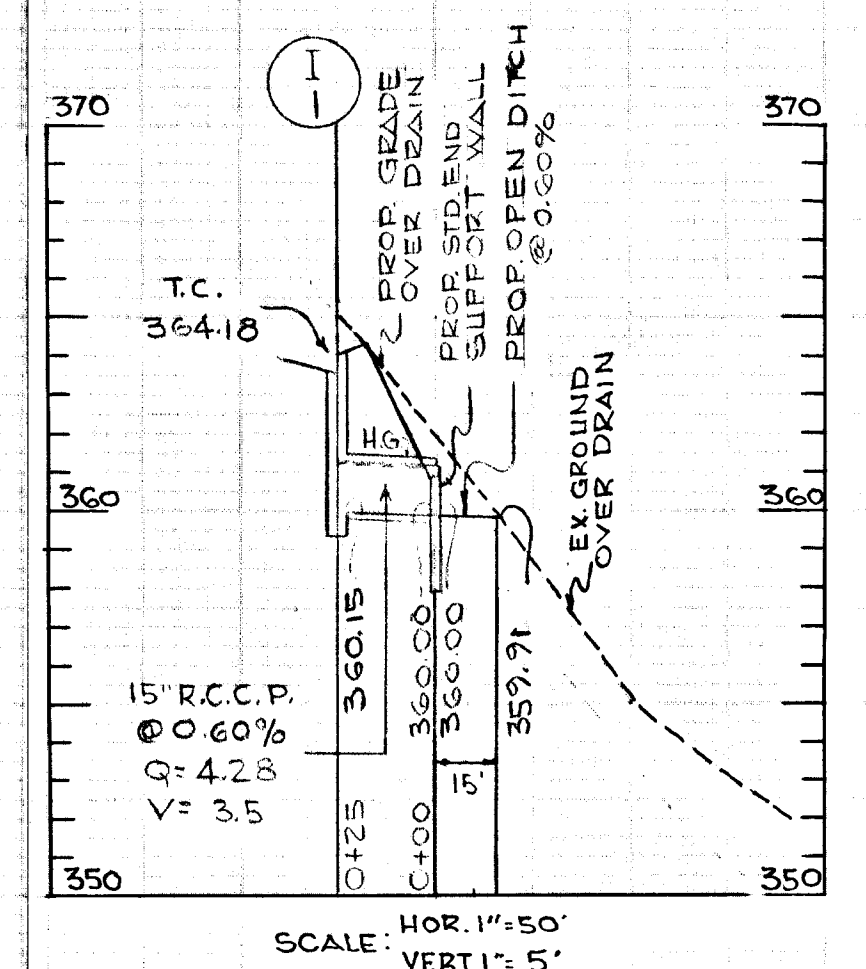
LINEAR PROFILE

CUL-DE-SAC
SCALE: HOR. 1" = 50'
VERT. 1" = 5'



DRAIN PROFILE

FROM I-1 TO OUTFALL



F-67-32