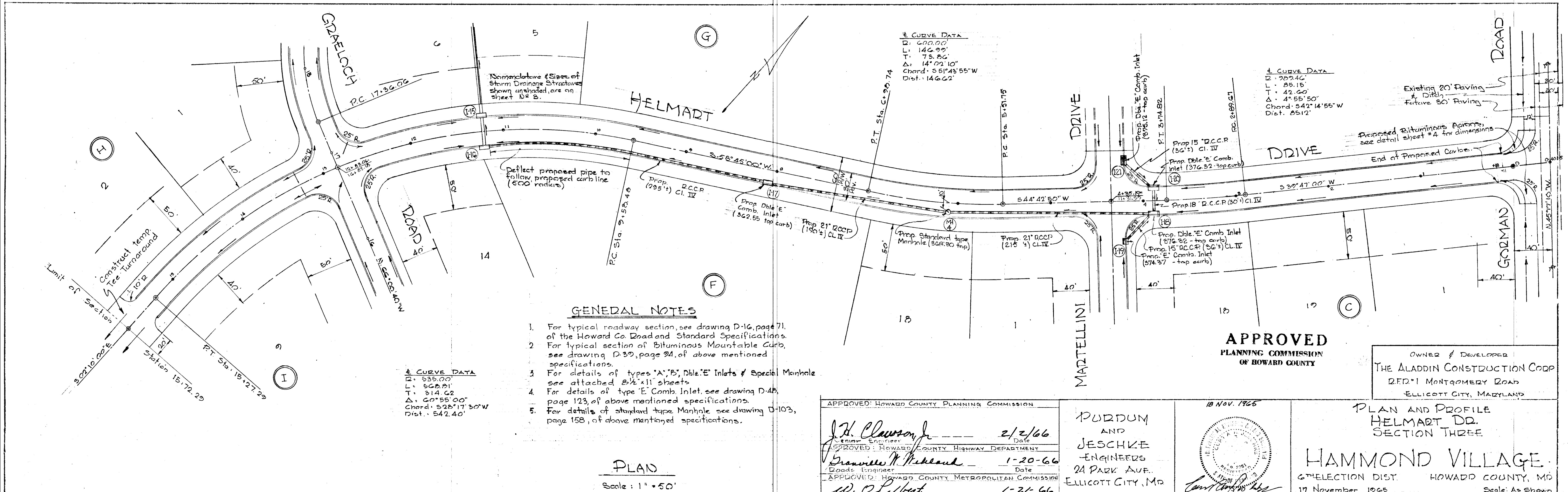
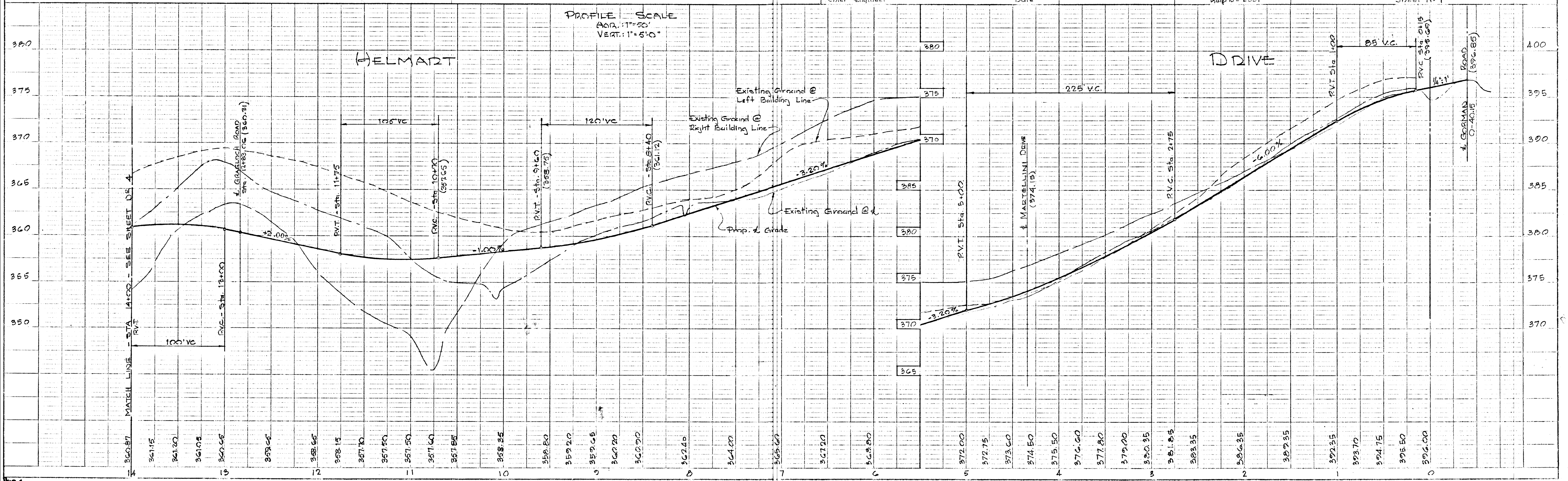


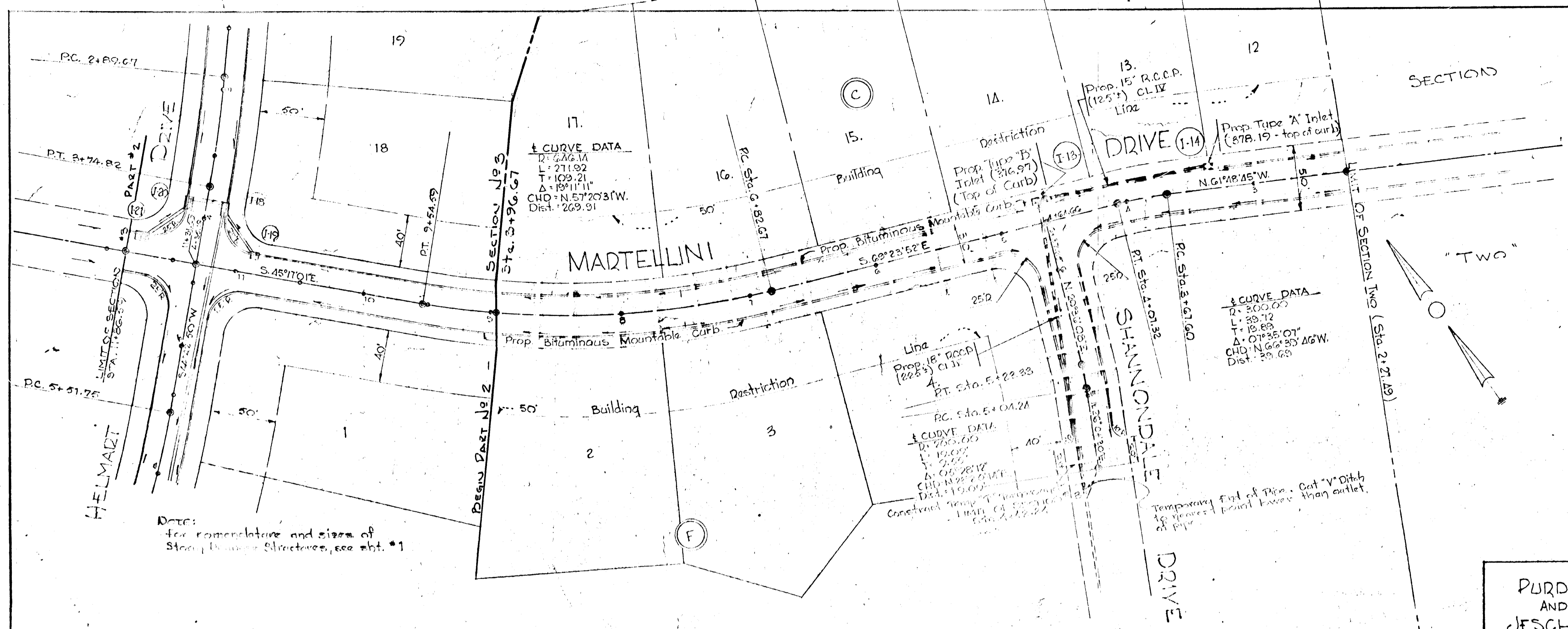
PLAN
 NOTE BOOK
 NO.



PROFILE
 NOTE BOOK
 NO.



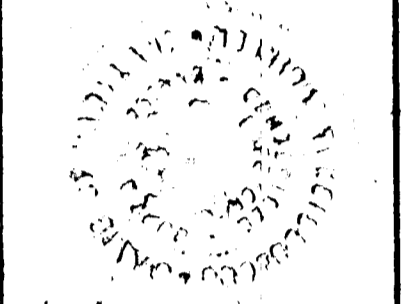
DATE: _____
 BY: _____
 PLAN NO. _____
 CHECKED BY: _____
 DATE: _____



Note: For nomenclature and sizes of Street Name Structures, see sheet #1

OWNER & DEVELOPER
THE ALADDIN CONSTRUCTION CORP.
 R.F.D. #1 MONTGOMERY ROAD
 ELLICOTT CITY, MARYLAND

APPROVED HOWARD COUNTY PLANNING COMM.
J. H. Clawson, Jr. 3-23-67
 Senior Engineer Date
 APPROVED HOWARD COUNTY HIGHWAY DEPT.
Ernest W. Mehlend 3-21-67
 Roads Engineer Date
 APPROVED HOWARD COUNTY METROPOLITAN COMM.
W. O. Lubert 3-28-67
 Chief Engineer Date

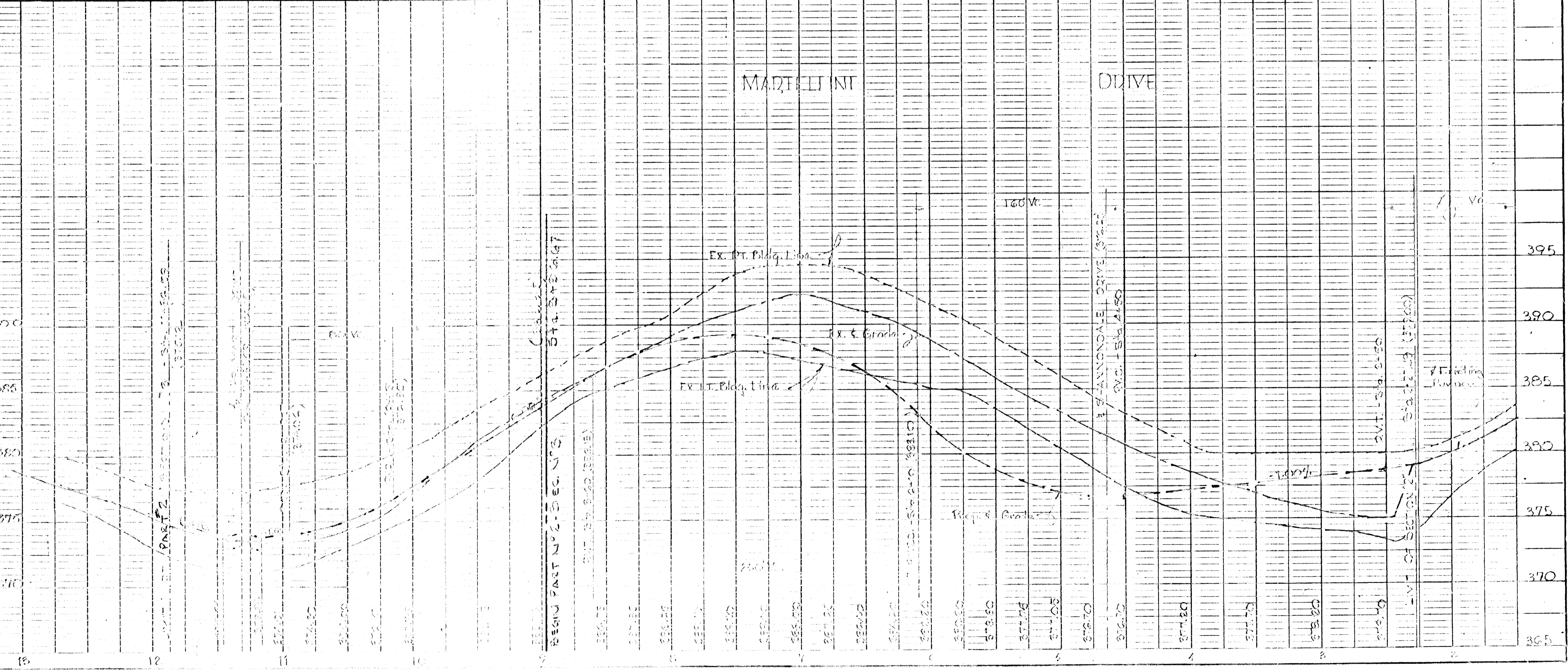
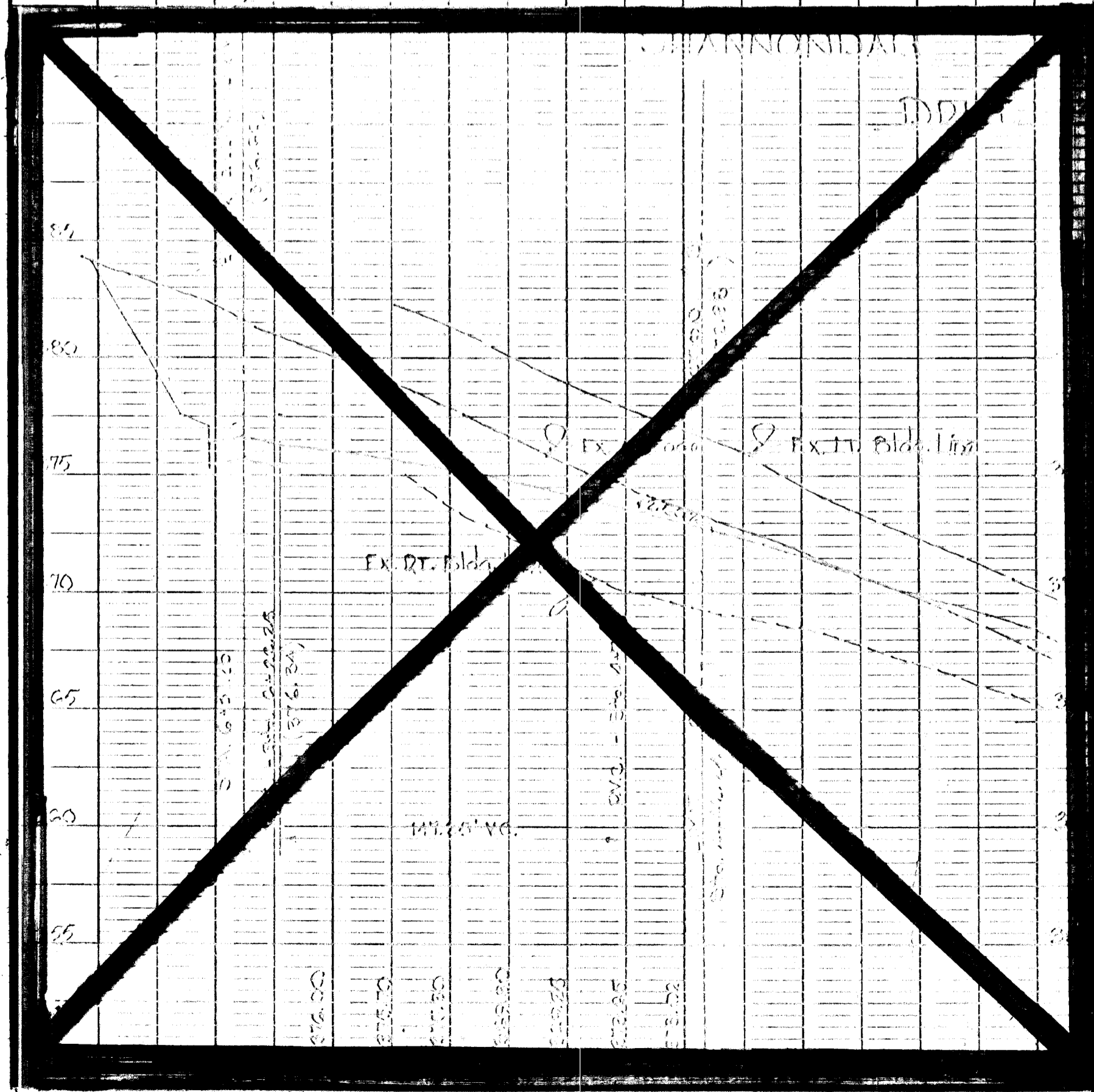


PURDUM AND JESCHKE ENGINEERS
 24 PARK AVE.
 ELLICOTT CITY, MD.



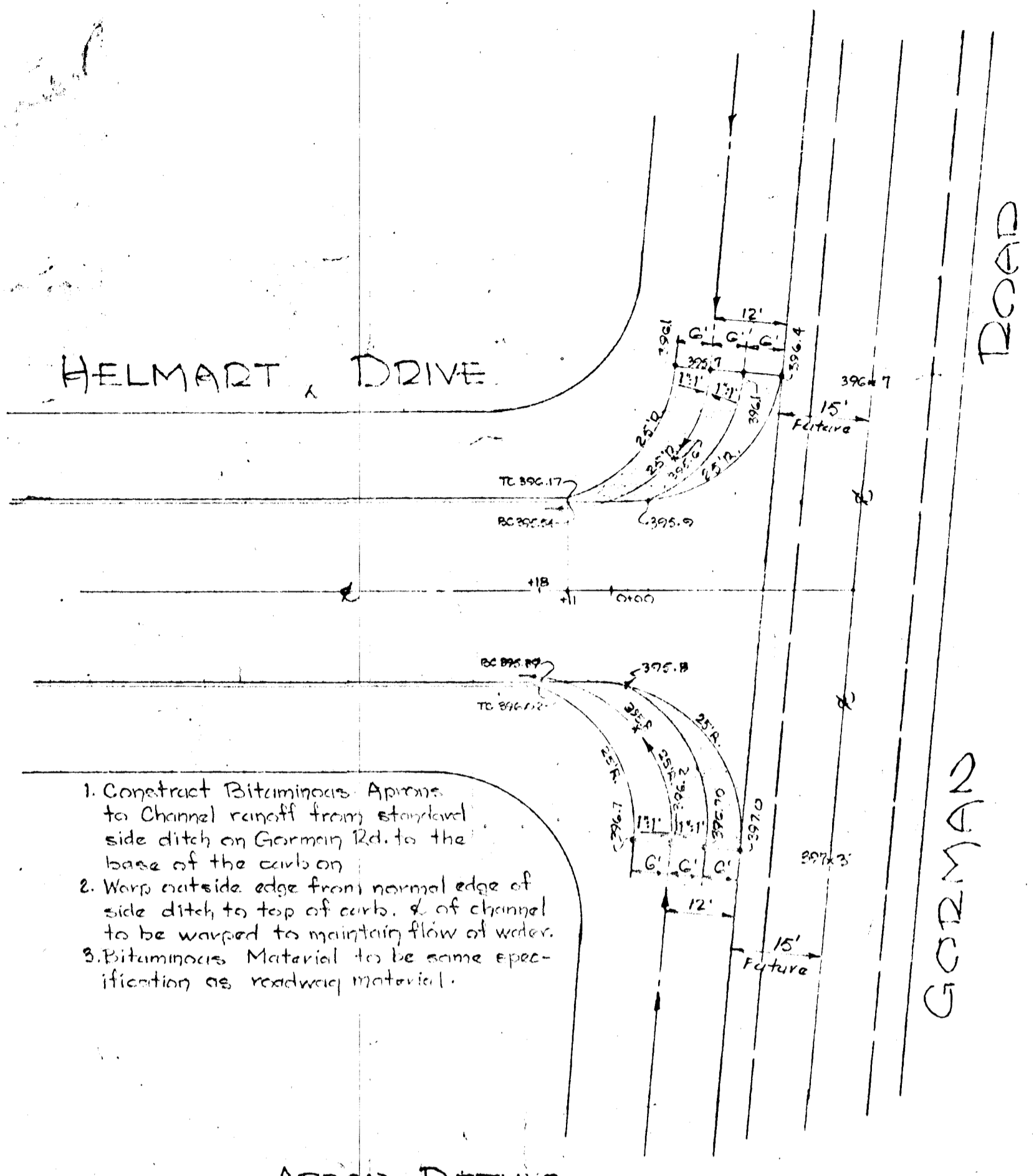
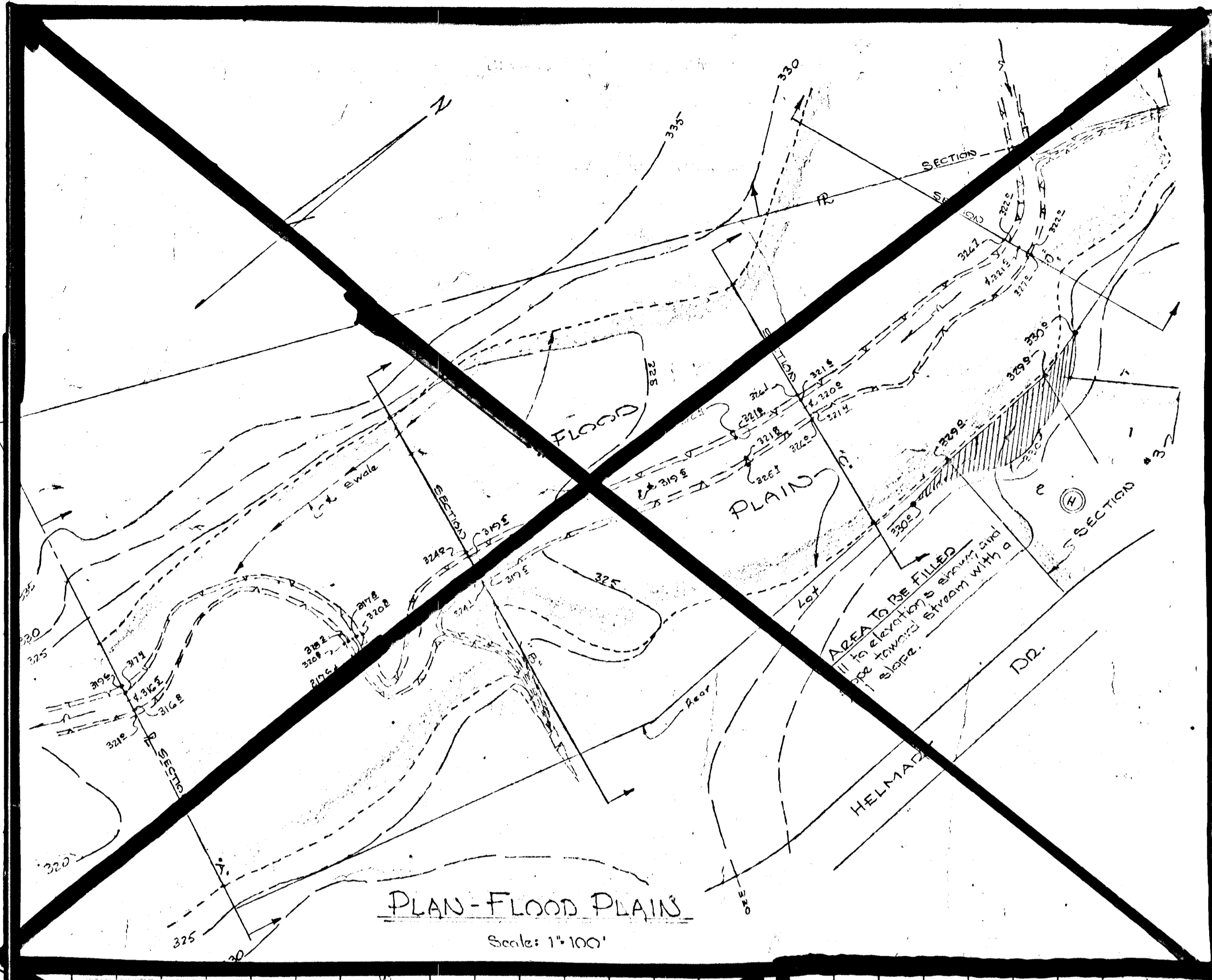
PLAN & PROFILE OF: MARTELLINI DRIVE & SHANNONDALE DRIVE
 PART #2 SECTION #3
HAMMOND VILLAGE
 6TH ELECTION DIST. HOWARD COUNTY, MD
 20 FEB. 1967 SCALE: AS SHOWN
 Sheet No. 2 of 3

PLAN SCALE
 Scale 1"=60'



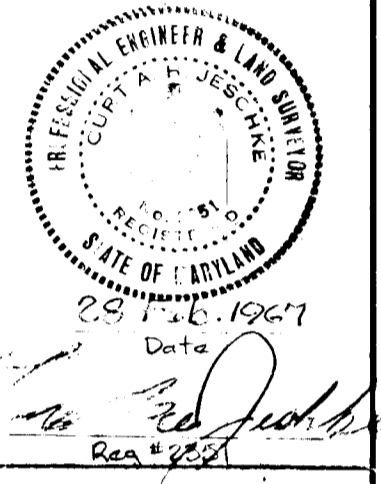
DATE: _____
 BY: _____
 PROFILE NO. _____
 CHECKED BY: _____
 DATE: _____

PLAN SURVEYED BY DATE
 PLOTTED BY DATE
 NOTE BOOK NO. OF PAGES CHECKED BY DATE
 NO. OF PAGES CHECKED BY DATE



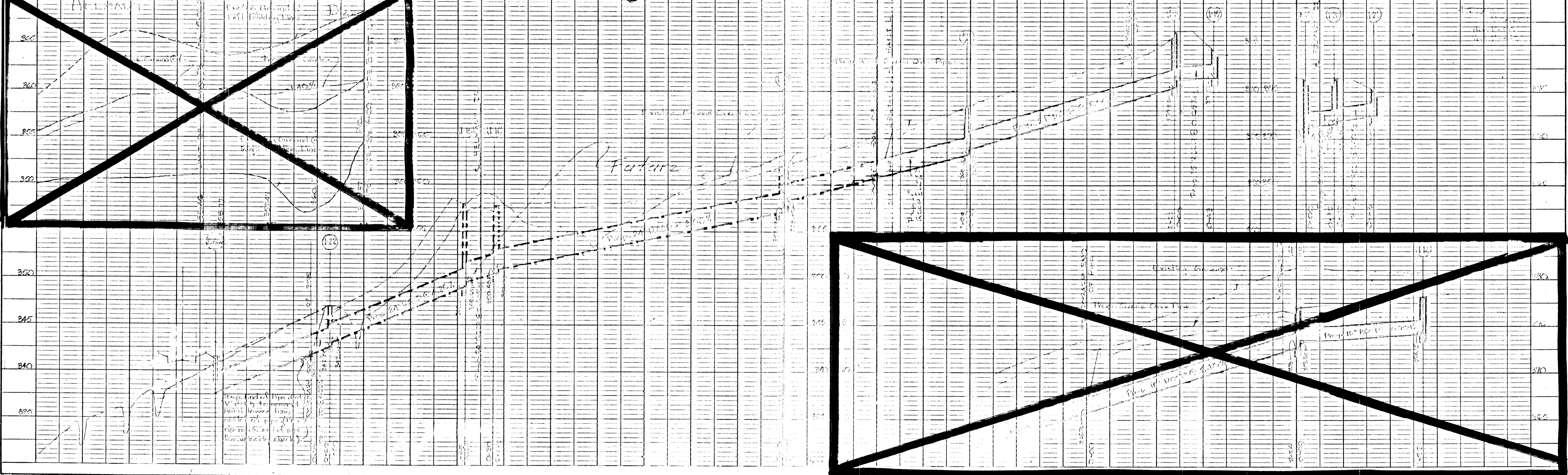
1. Construct Bituminous Aprons to Channel runoff from standard side ditch on Gorman Rd. to the base of the curb on
2. Warp outside edge from normal edge of side ditch to top of curb. S. of channel to be warped to maintain flow of water.
3. Bituminous Material to be same specification as roadway material.

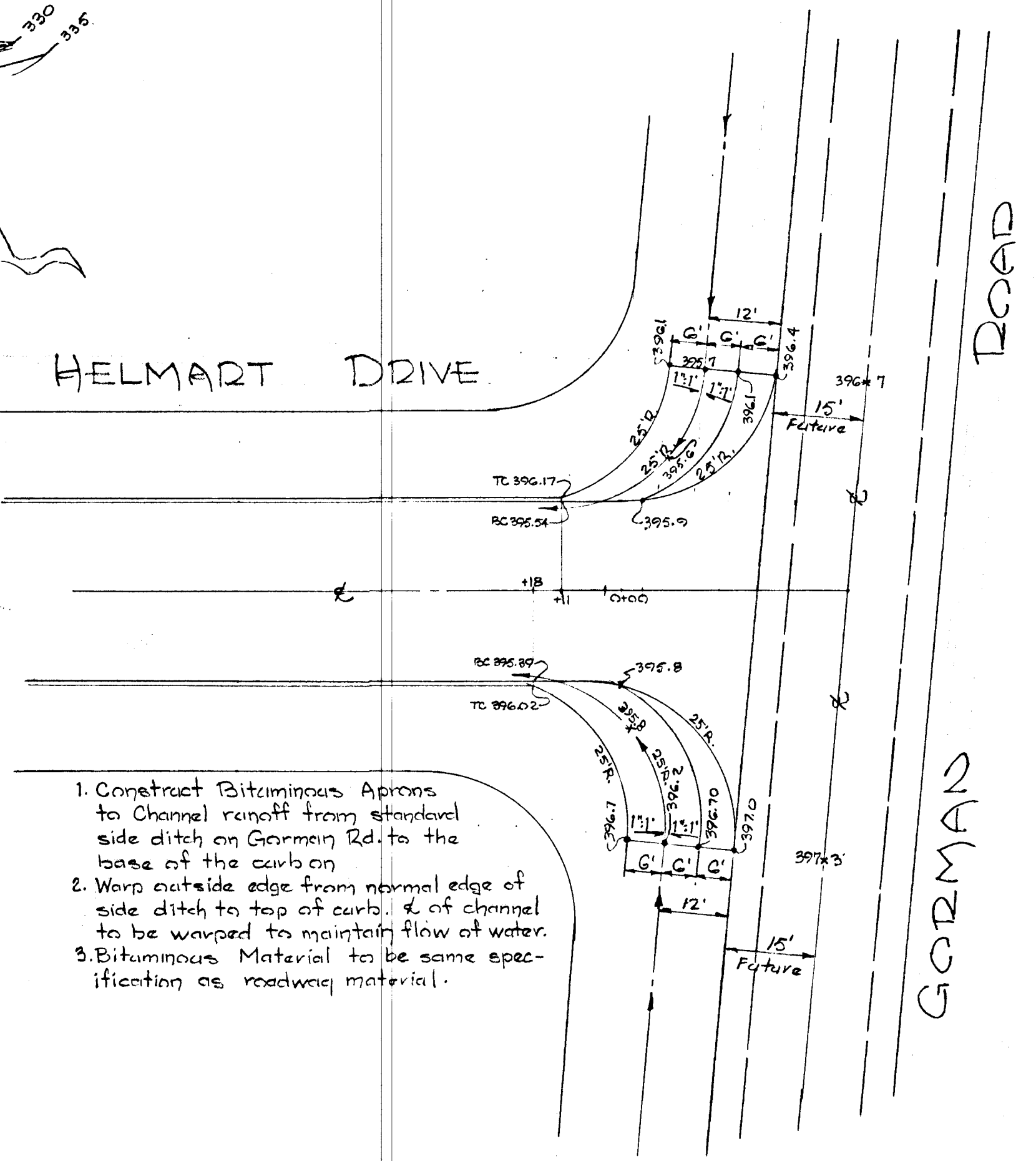
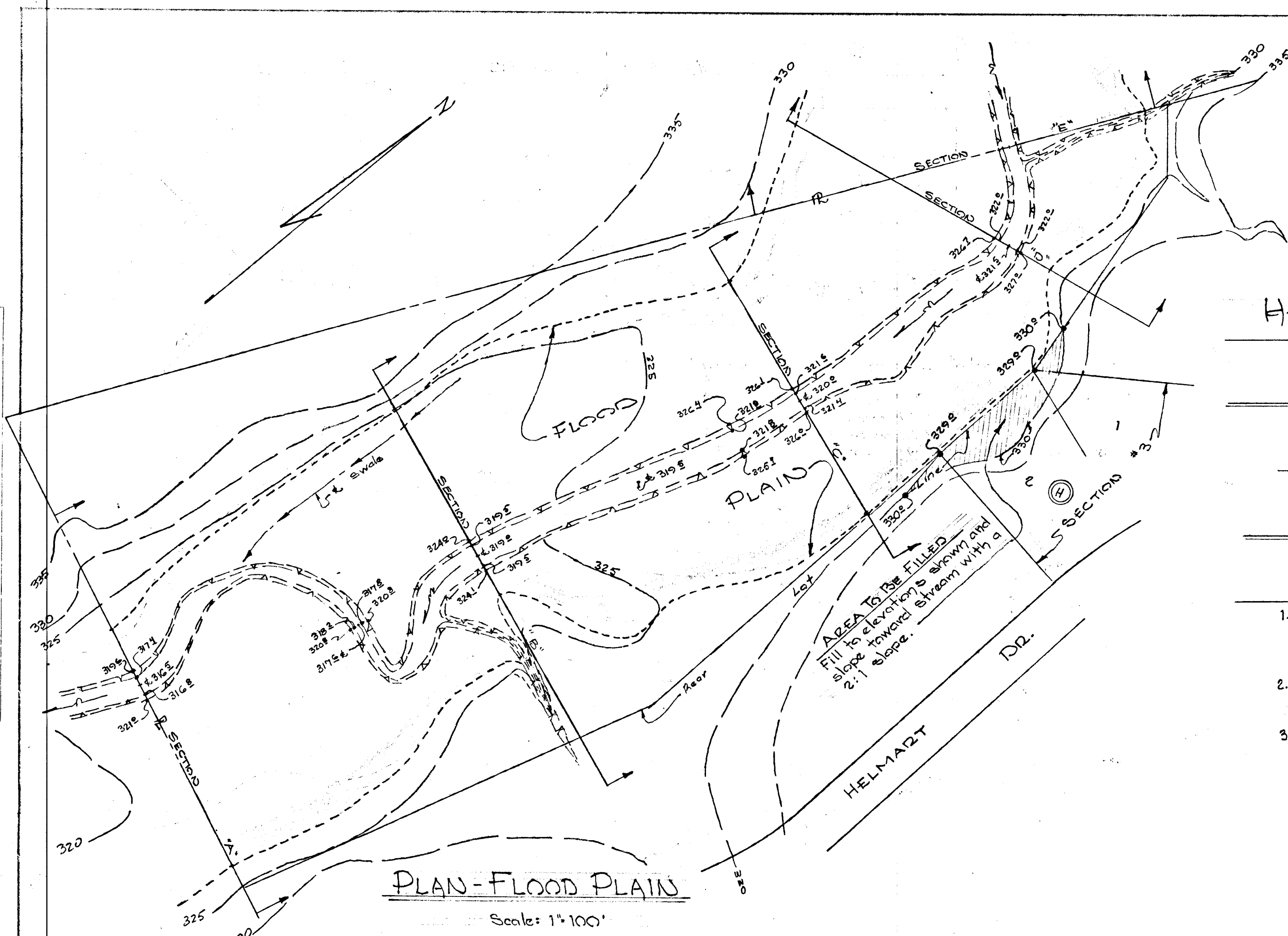
ENGINEER PODDIUM # JESCHKE ENGINEERS & LAND SURVEYORS 24 PARK AVE ELLCOTT CITY, MARYLAND	OWNER & DEVELOPER ALADIN CONSTR. CORP. 2FD * - MONTGOMERY RD. ELLCOTT CITY, MARYLAND
APPROVED HOWARD COUNTY PLANNING COMM.	
<i>J. H. Clawson Jr.</i> Senior Engineer Date: 3-23-67	
<i>Ernest W. McLeod</i> Roads Superintendent Date: 3-21-67	
APPROVED HOWARD COUNTY METROPOLITAN COMM.	
<i>W. O. Roberts</i> Chief Engineer Date: 3-28-67	



DRAINAGE PROFILES & EXTENSION OF HELMART DR.
 PART #2 - SECTION #3
HAMMOND VILLAGE
 6TH ELECTION DIST. - HOWARD COUNTY, MD
 28 FEBRUARY 1967
 Sheet No. 3 of 3
 SCALE: AS SHOWN

PROFILE SURVEYED BY DATE
 PLOTTED BY DATE
 NOTE BOOK NO. OF PAGES CHECKED BY DATE
 NO. OF PAGES CHECKED BY DATE





1. Construct Bituminous Aprons to Channel runoff from standlevel side ditch on Gorman Rd. to the base of the curb on
2. Warp outside edge from normal edge of side ditch to top of curb. & of channel to be warped to maintain flow of water.
3. Bituminous Material to be same specification as roadway material.

APPROVED
PLANNING COMMISSION
OF HOWARD COUNTY

ENGINEER PORDUM # JESCHKE ENGINEERS & LAND SURVEYORS 24 PARK AVE ELLCOTT CITY, MARYLAND	OWNER & DEVELOPER ALADDIN CONSTR. CORP. 124 #1 - MONTGOMERY RD. ELLCOTT CITY, MARYLAND
APPROVED HOWARD COUNTY PLANNING COMM.	
<i>J. H. Clawson, Jr.</i> Senior Engineer Date: 2/2/66	APPROVED HOWARD COUNTY HIGHWAY DEPT. Date: 1-20-66
<i>Francis W. Weiland</i> Roads Engineer Date: 1-20-66	APPROVED HOWARD COUNTY METROPOLITAN COMM. Date: 1-21-66
<i>W. O. Lubert</i> Chief Engineer	<i>Edward J. ...</i> 17 Nov 1965 No. 251

DRAINAGE PROFILES & EXTENSION OF HELMART DR.
SECTION THREE
HAMMOND VILLAGE
6TH ELECTION DIST. - HOWARD COUNTY, MD
18 NOV. 1965
11 JAN. 1966
Sheet No. 4
SCALE: AS SHOWN

